

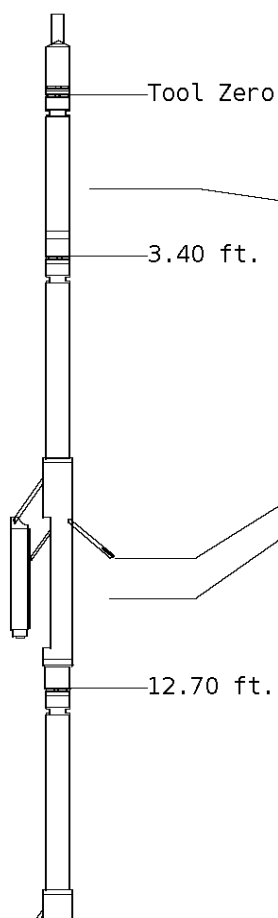
ALL PRESENTATIONS AS PER CUSTOMER REQUEST
 GRT, CNT, LDT, MLT, CST, AND PIT RUN IN COMBINATION
 CALIPERS ORIENTED ON X-Y AXIS
 2.71 G/CC USED TO CALCULATE POROSITY
 ANNULAR HOLE VOLUME CALCULATED USING 5.50" PRODUCTION CASING
 PHIN IS CALIPER CORRECTED
 DETAIL SECTION FROM TD TO 2050'

GRT: GRP.
 CNT: PHIN, CLCNIN.
 LDT: PORL, LCORN, PECLN, LDENN, CLLDIN.
 MLT: NOR_RF, INV_RF, MSCLPIN.
 CST: PORS, ITT, CDTF, TT1, TT2, TT3, TT4.
 PIT: ILD, ILM, SFLAEC, CIRD, SPU

OPERATORS:
 A. DJAHO
 C. GONZALES

Tool String Schematic

Total Tool Length - 67.37 ft.
Maximum Outside diameter - 6.00 in.
Net Weight in Air - 1171.00 lbs.



Tool: GRT-B **Length:** 3.40 ft. **O.D.** 3.60 in.
 Gamma Ray Controller

Sonde ID :GRT-BB-109

Measure Point	Tool Offset	Stack Offset	Bottom Offset
GRP	2.00	2.00	65.37

Tool: CNT-AA **Length:** 9.30 ft. **O.D.** 4.36 in.
 Compensated Neutron A Pad on NDT-A

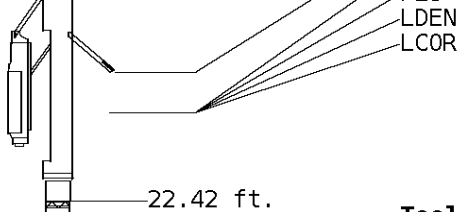
Sonde ID :NDT-BB-103
Source ID :N-1045
Pad ID :CNP-AA-116-

Measure Point	Tool Offset	Stack Offset	Bottom Offset
CLCN	6.00	9.40	57.97
PHIN	6.80	10.20	57.17

Tool: LDT-DF **Length:** 9.72 ft. **O.D.** 4.80 in.
 Litho Density D Pad on NDT-F

Sonde ID :NDT-BB-148
Source ID :2991GW
Pad ID :LDP-DA-065

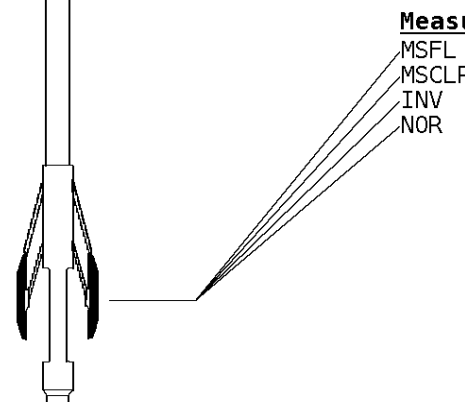
Measure Point	Tool Offset	Stack Offset	Bottom Offset
CLLD	6.42	19.12	48.25
PEL	7.42	20.12	47.25
PES	7.82	20.52	46.85



7.62 20.32 47.05
 7.62 20.32 47.05

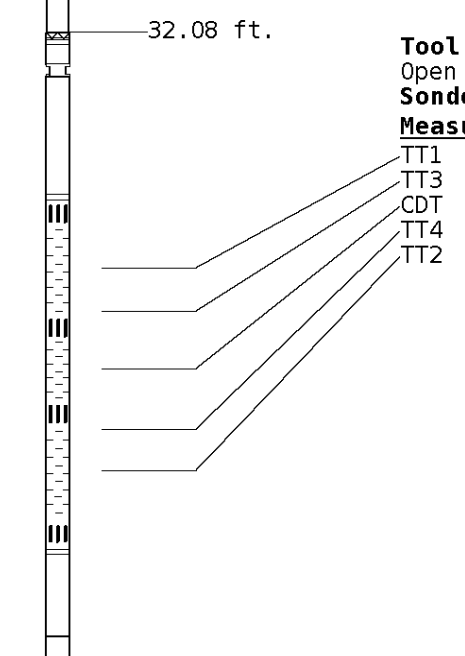
Tool: MST-DA **Length:** 9.66 ft. **O.D.** 6.00 in.
 Micro Spherically Focused (IC)
Sonde ID :MST-DA-057

Measure Point	Tool Offset	Stack Offset	Bottom Offset
MSFL	7.60	30.02	37.35
MSCLP	7.60	30.02	37.35
INV	7.60	30.02	37.35
NOR	7.60	30.02	37.35



Tool: CST-AD **Length:** 13.80 ft. **O.D.** 3.60 in.
 Open Hole Sonic
Sonde ID :CST-AB-25

Measure Point	Tool Offset	Stack Offset	Bottom Offset
TT1	4.80	36.88	30.49
TT3	5.80	37.88	29.49
CDT	7.30	39.38	27.99
TT4	8.80	40.88	26.49
TT2	9.80	41.88	25.49



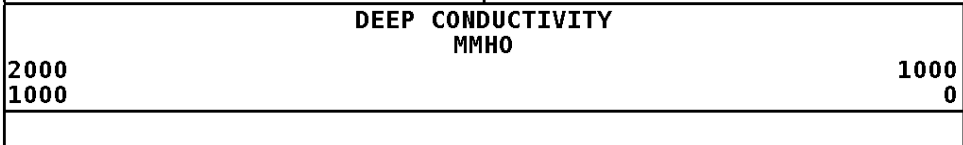
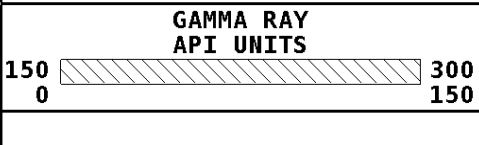
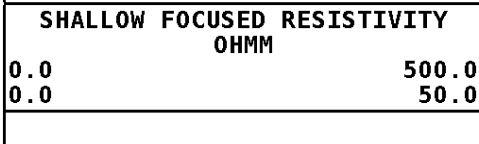
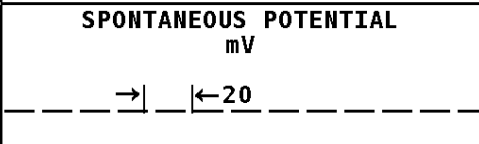
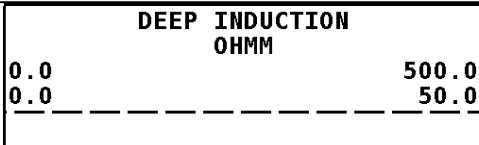
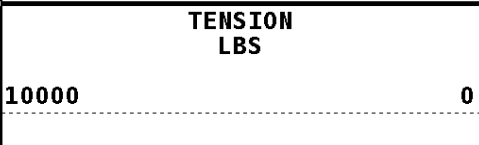
Tool: PIT-CA **Length:** 21.49 ft. **O.D.** 3.62 in.
 Phased Dual Induction w/ RM & D
Sonde ID :PIT-CA-075

Measure Point	Tool Offset	Stack Offset	Bottom Offset
ILD	8.92	54.80	12.56
ILM	10.10	55.98	11.39
SFLU	17.49	63.37	4.00
SP	20.60	66.48	0.88

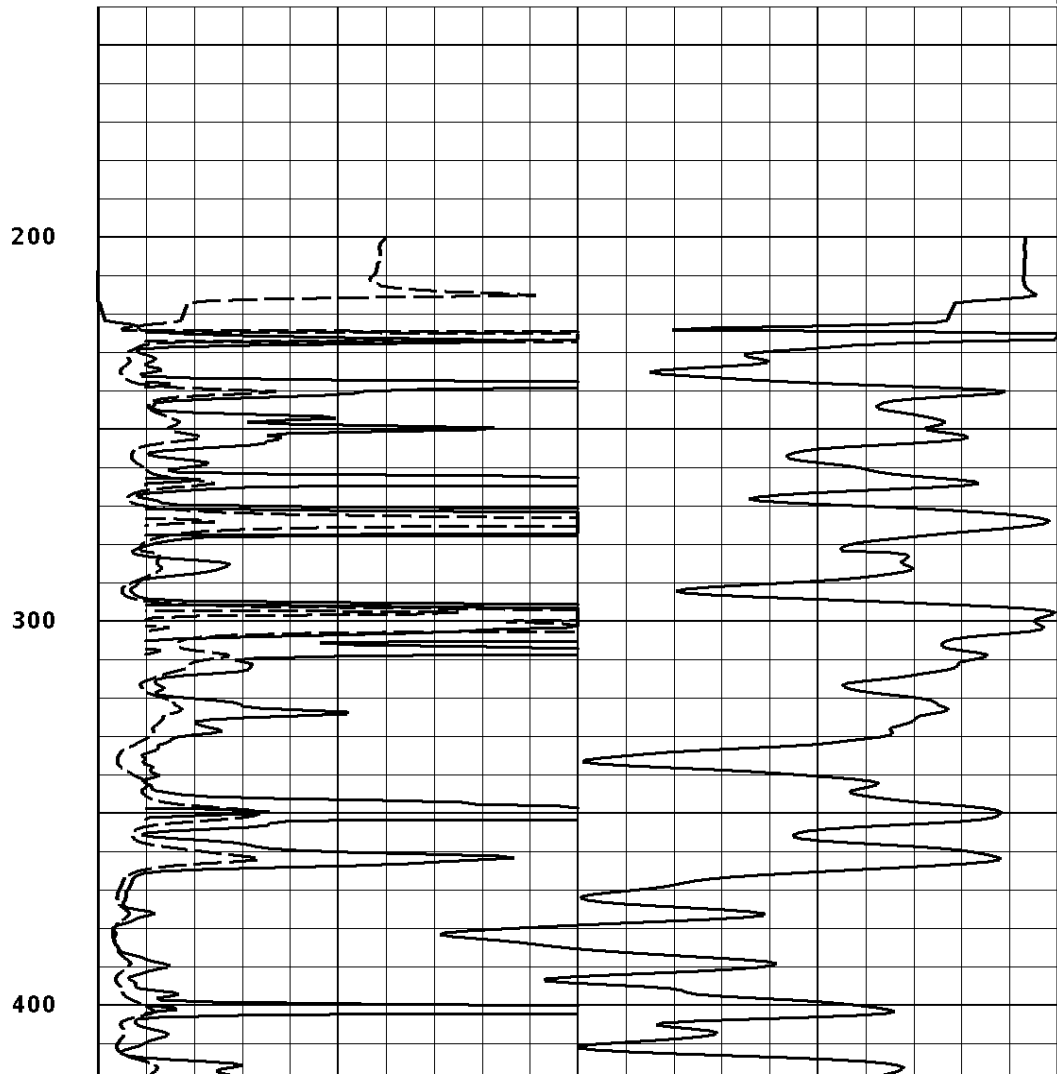
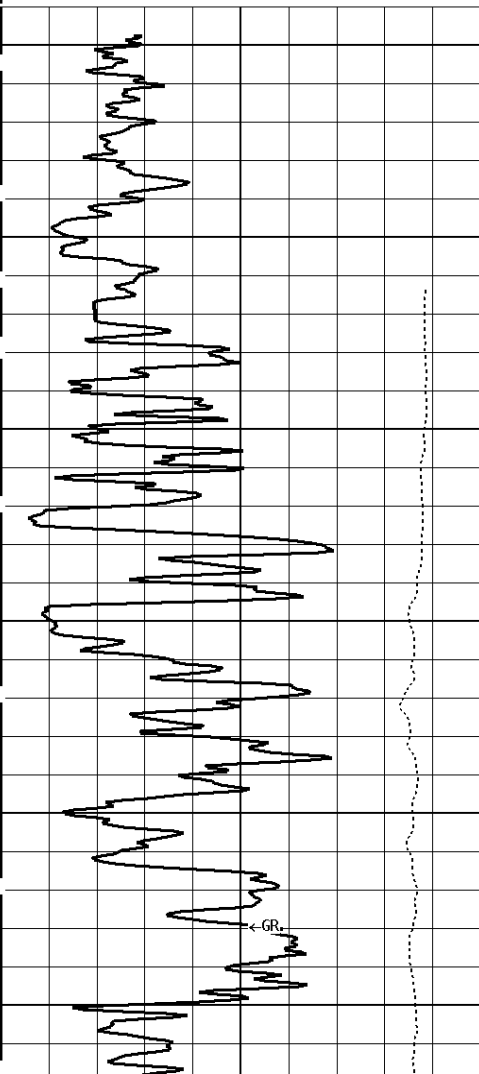
LWT 67.37 ft.

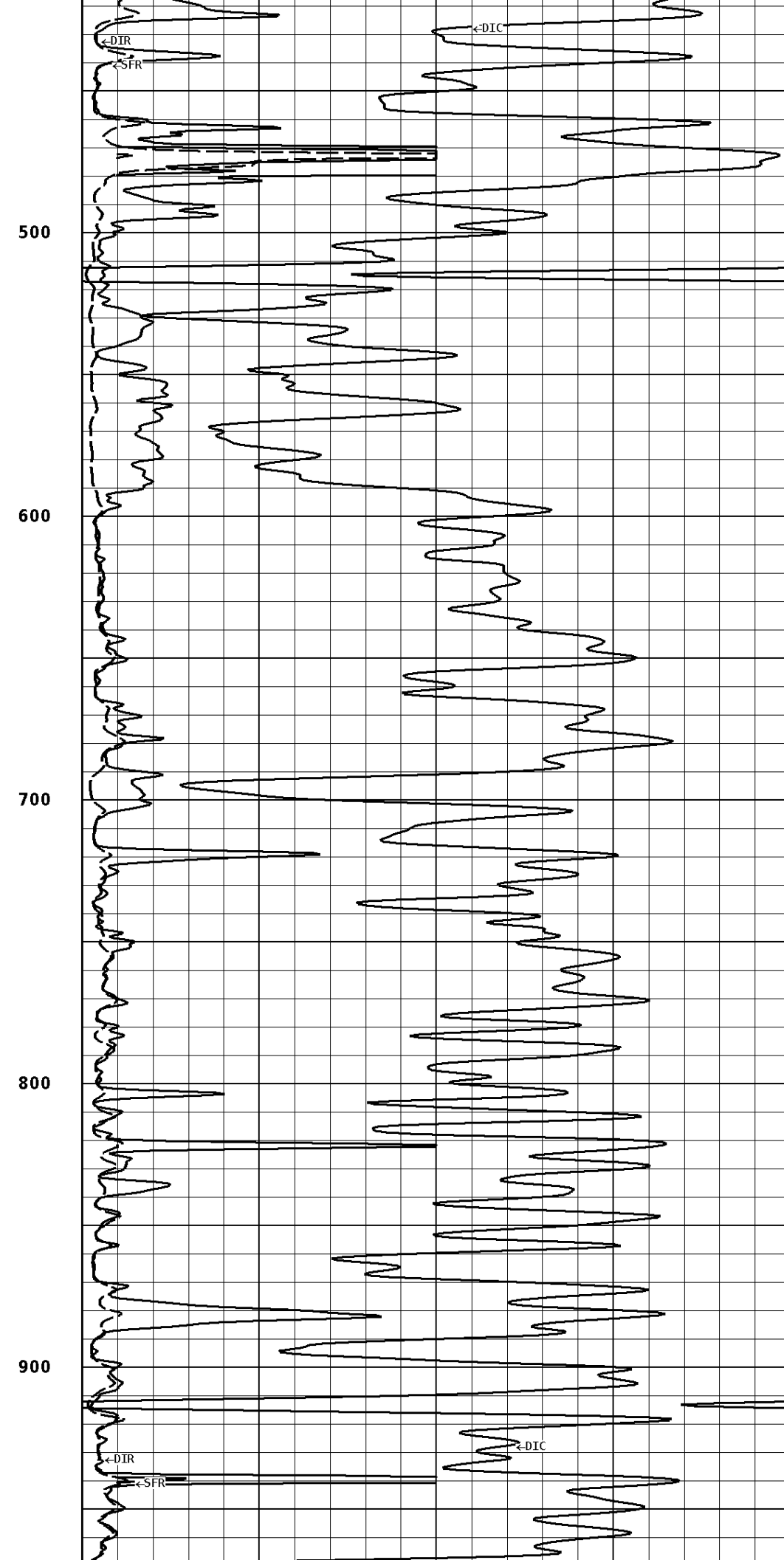
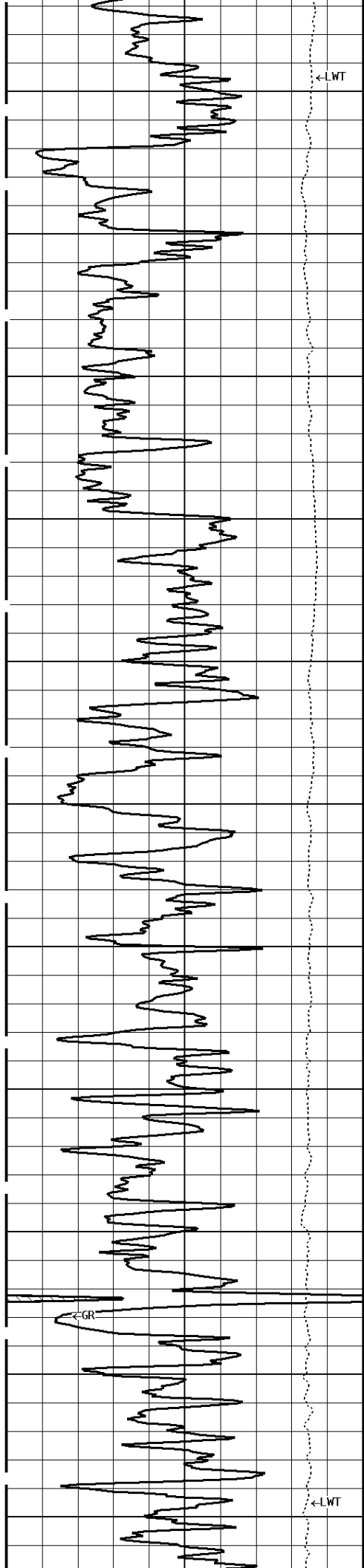
Well File: sono-unru-1-quint-dec-7
 Segment: V1.D1.S6 MAIN
 Reference: 0

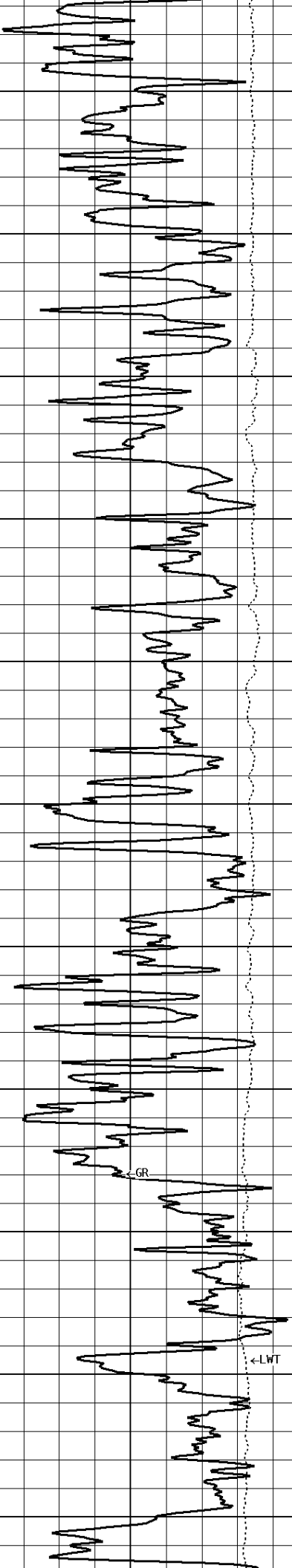
Scale: 1:600 Format: DIL-600
 Acquired: 2014-12/07 03:23 3.4.0-13284
 Processed: 2014-12/07 04:54 3.4.0-13284



1:600 MAIN SECTION







1000

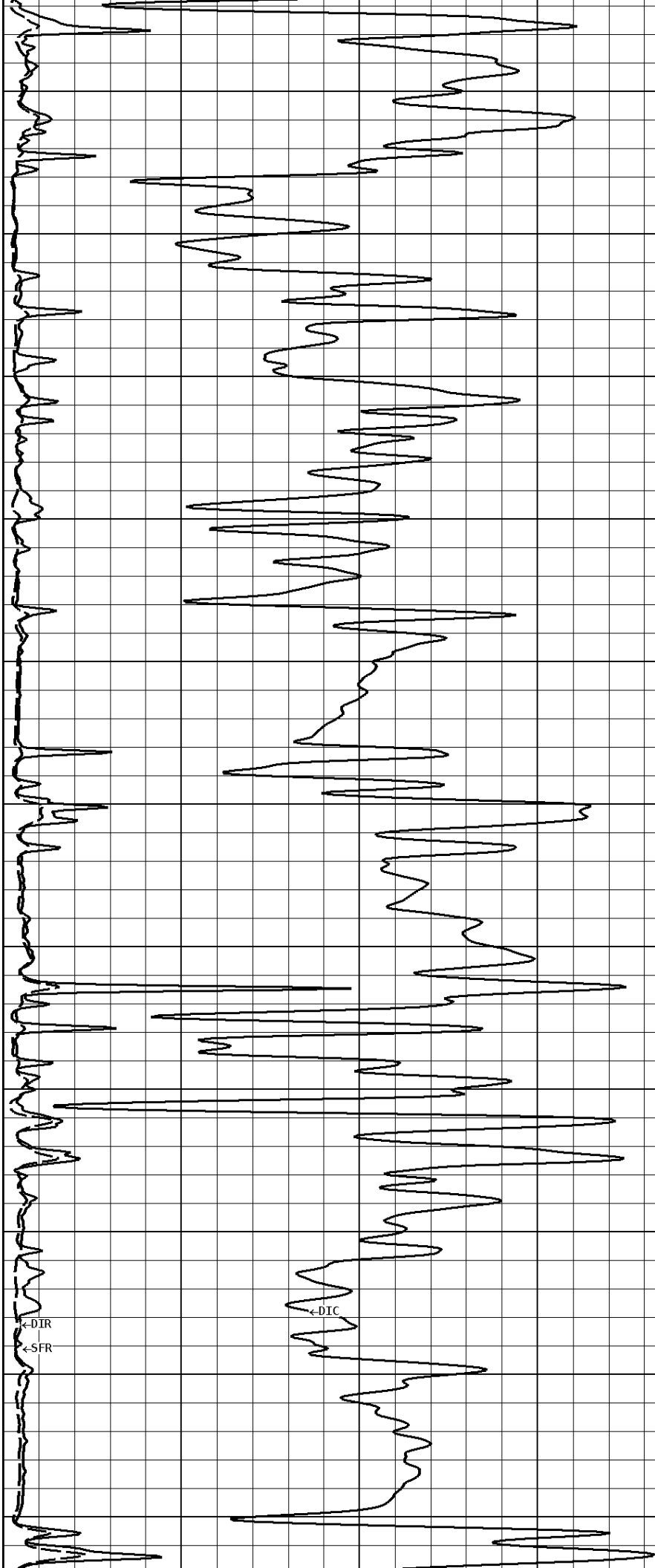
1100

1200

1300

1400

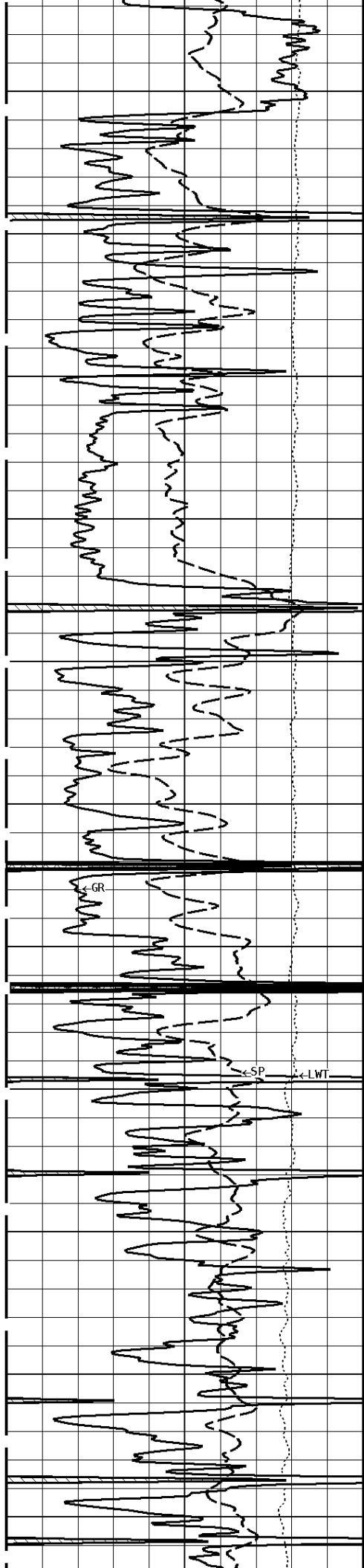
1500



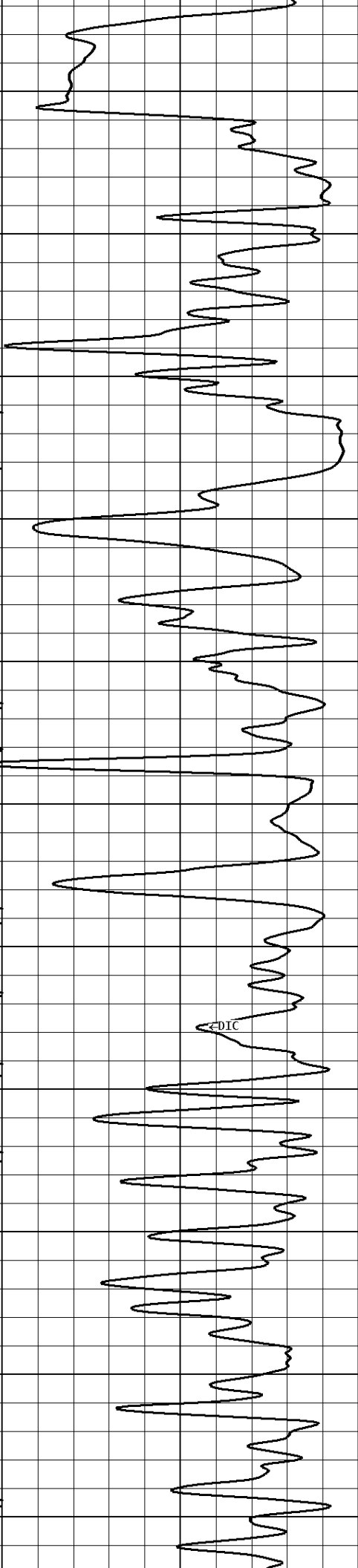
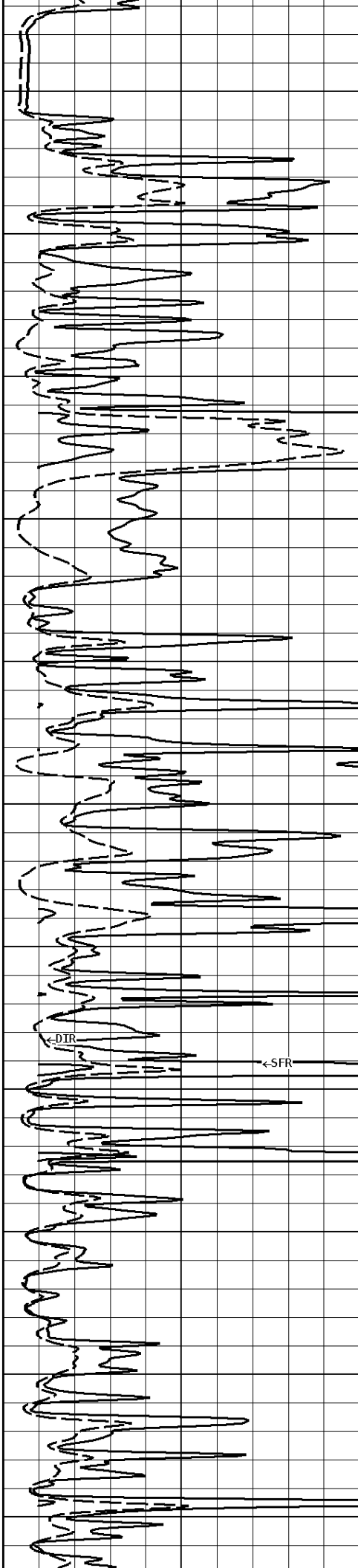
←DIR

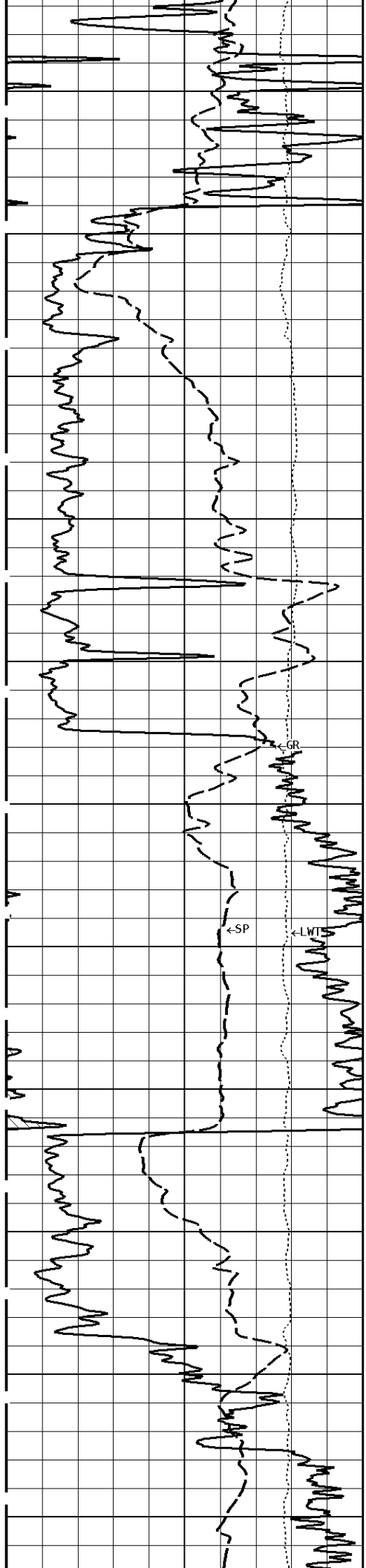
←DIR

←SFR



2100
2200
2300
2400
2500
2600





2700

2800

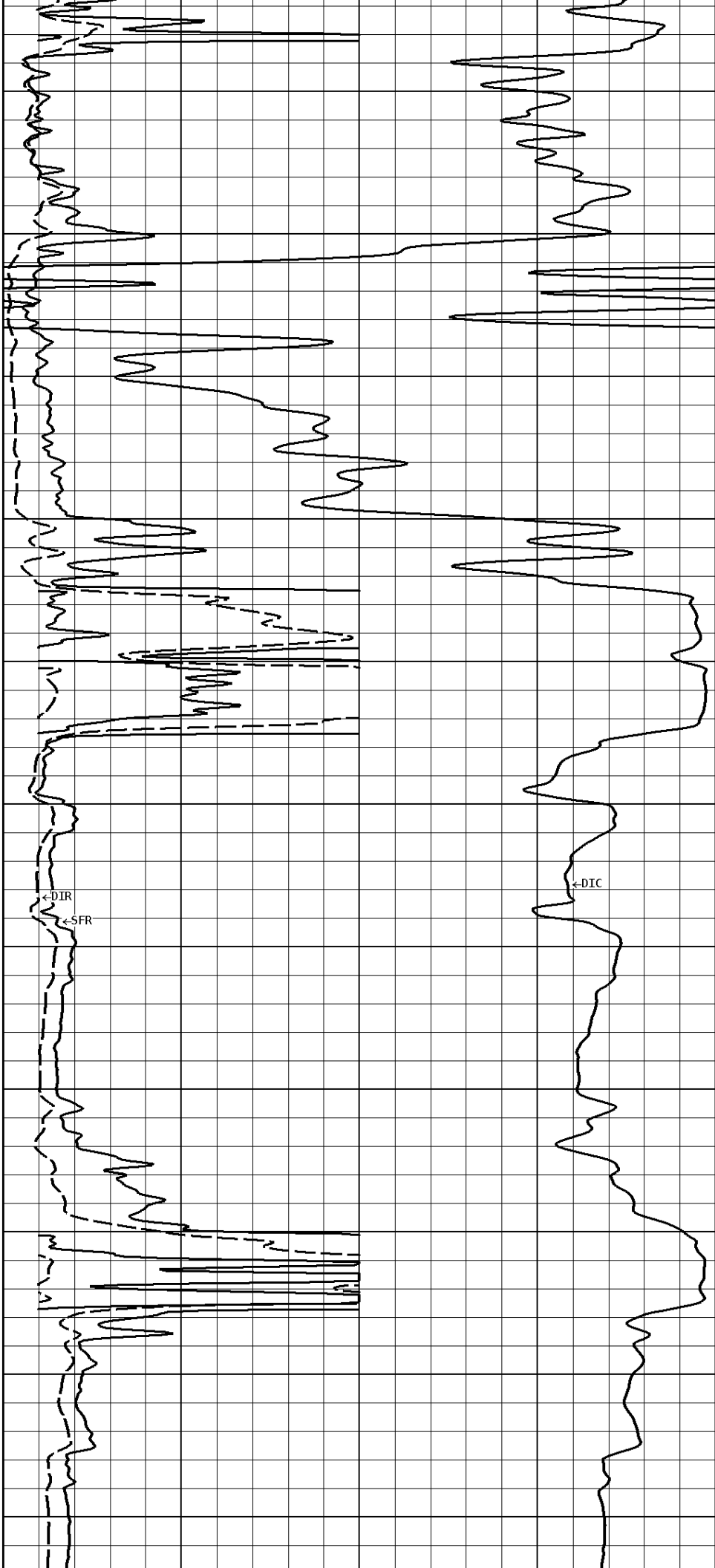
2900

3000

3100

←SP

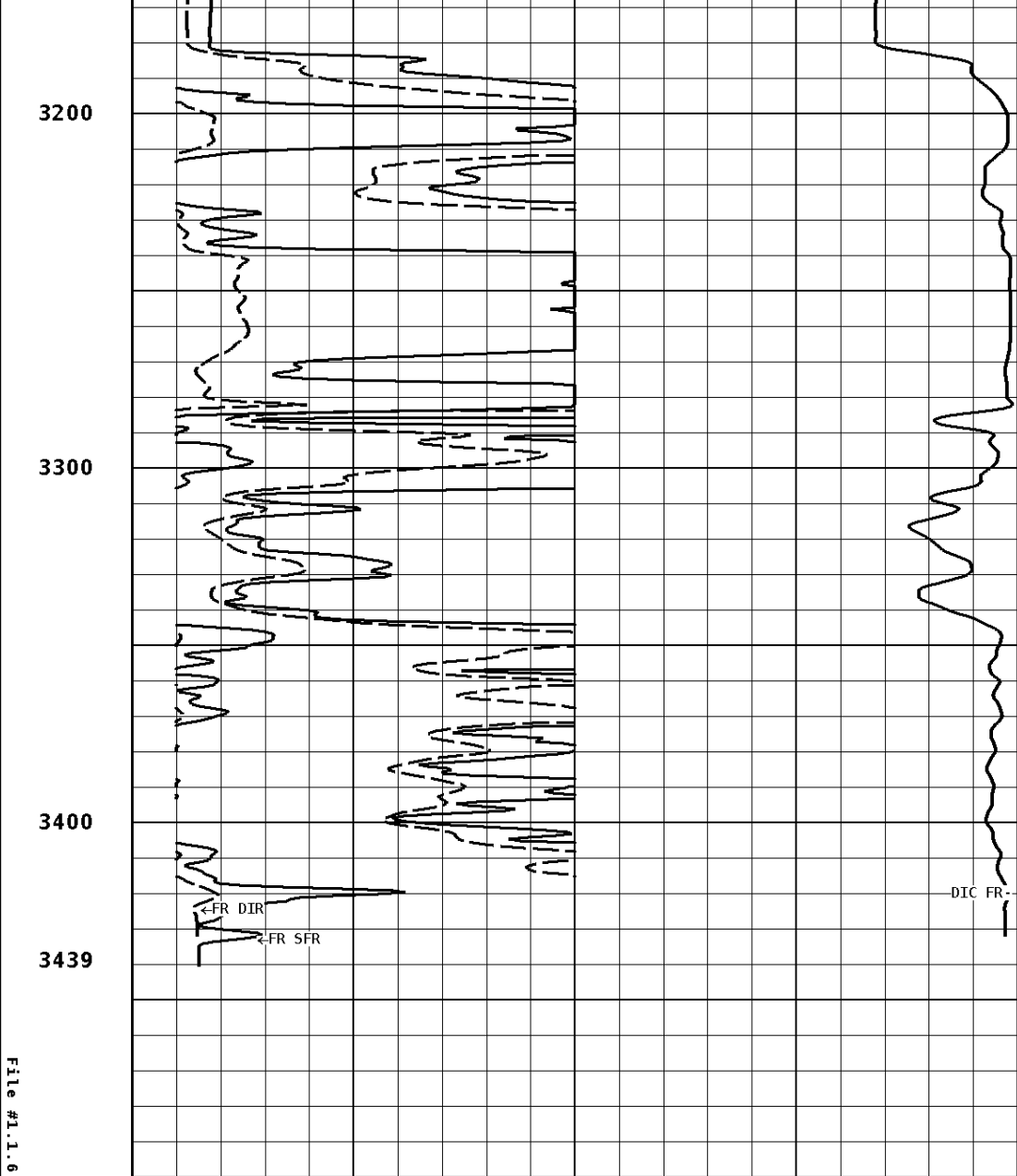
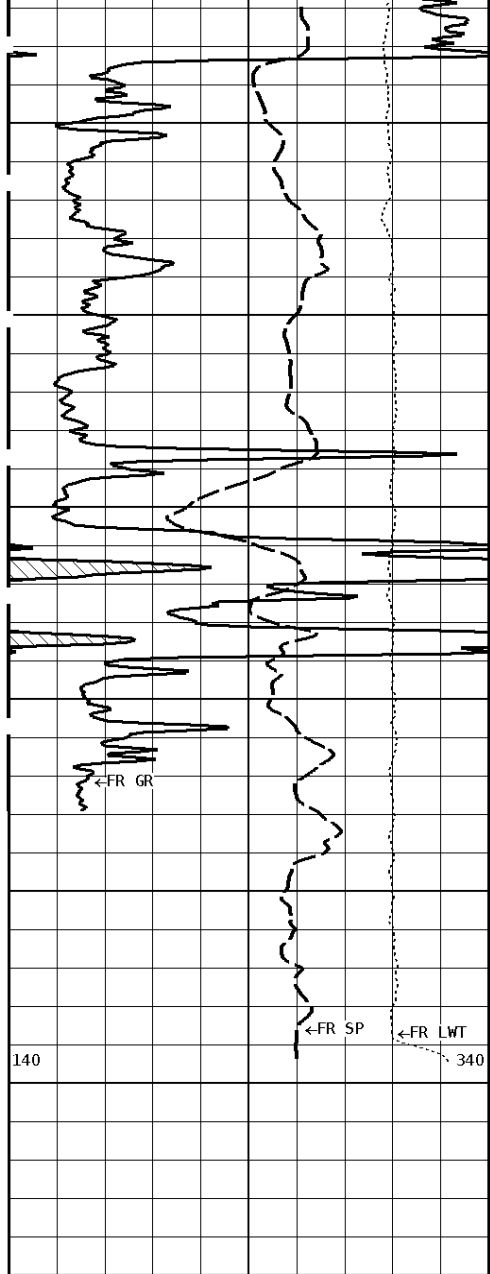
←LWT



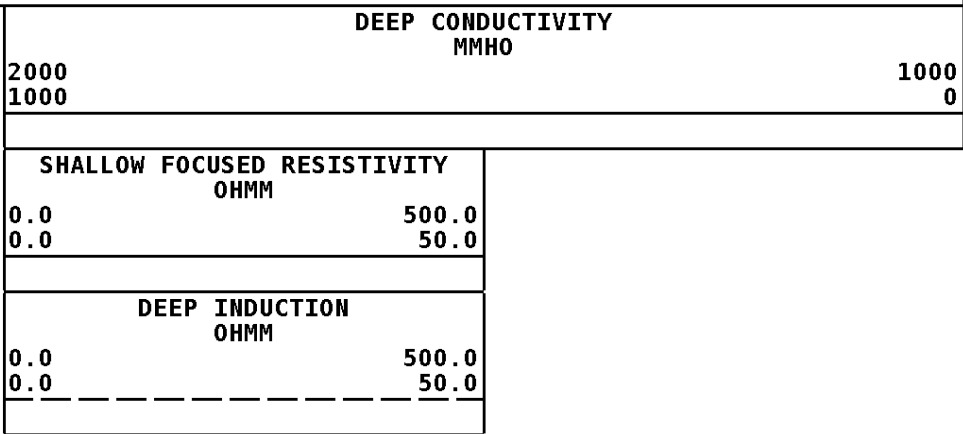
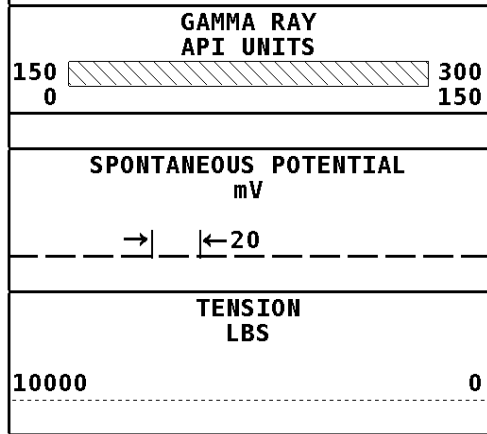
←DIR

←SFR

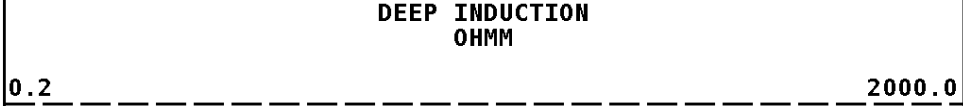
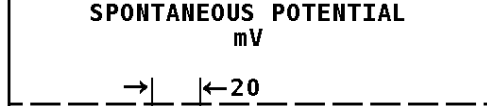
←DIC



1:600 MAIN SECTION



Well File: sono-unru-1-quint-dec-7 Scale: 1:240 Format: DIL-240
 Segment: V1.D1.S6 MAIN Acquired: 2014-12/07 03:23 3.4.0-13284
 Reference: 0 Processed: 2014-12/07 04:54 3.4.0-13284



TENSION
LBS

10000

0

MEDIUM INDUCTION
OHMM

0.2

2000.0

GAMMA RAY
API UNITS

150
0

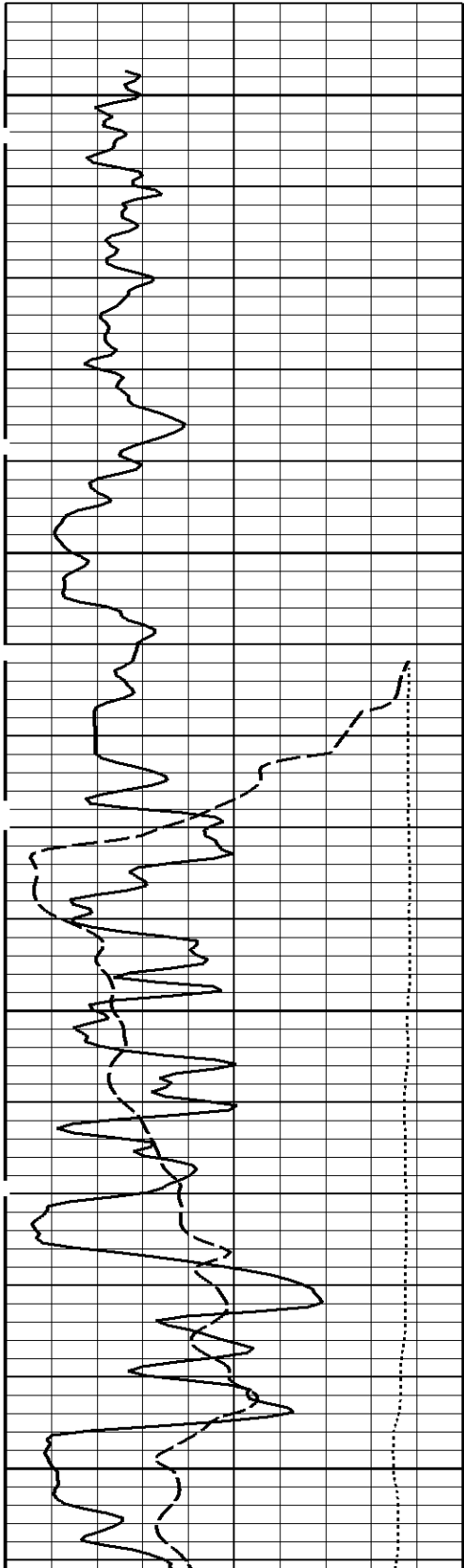
300
150

SHALLOW FOCUSED RESISTIVITY
OHMM

0.2

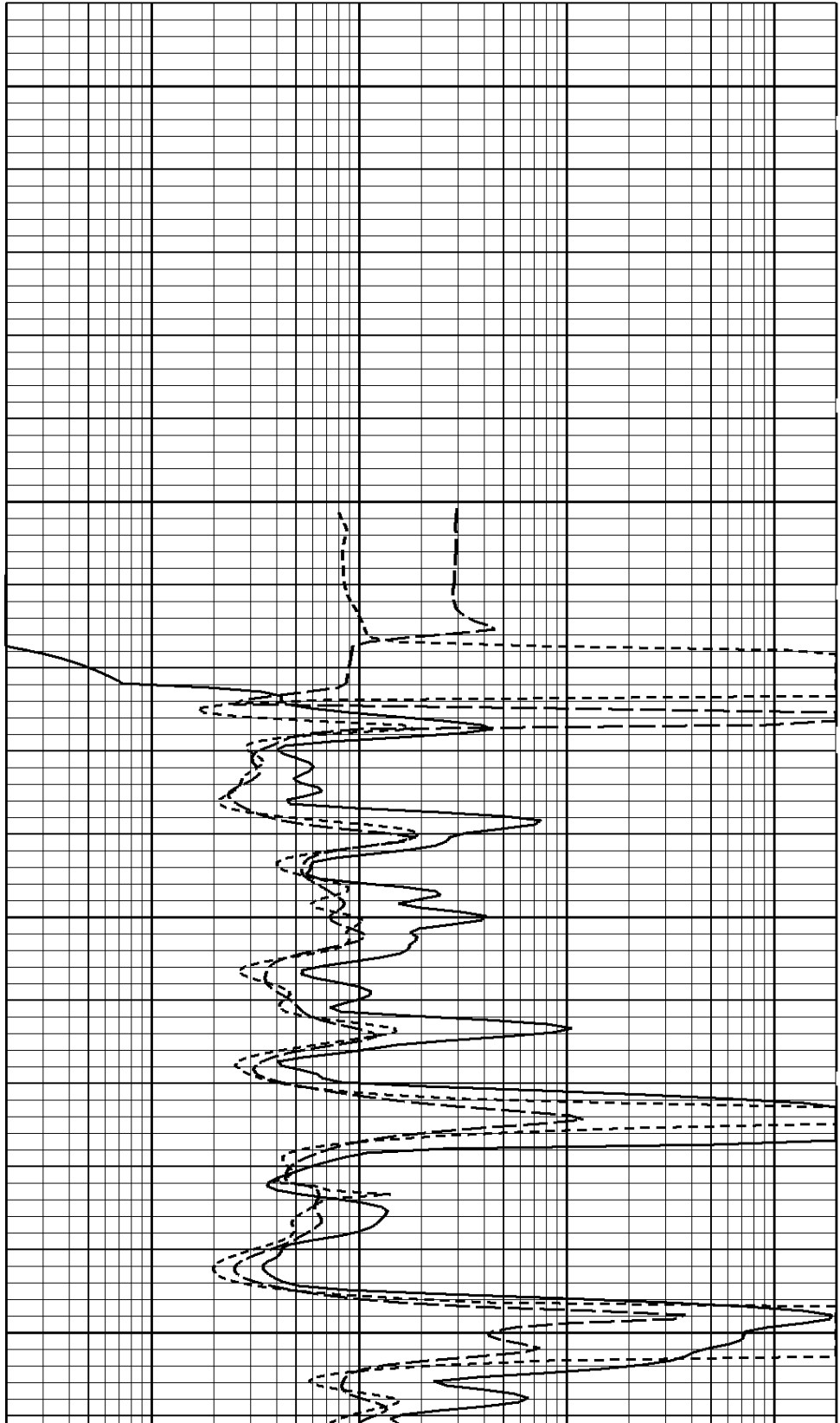
2000.0

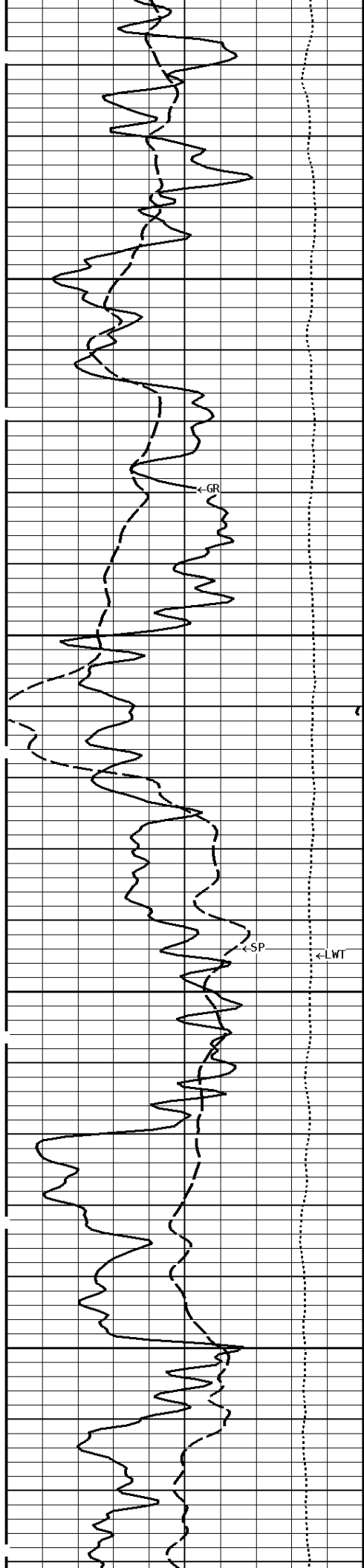
1:240 MAIN SECTION



200

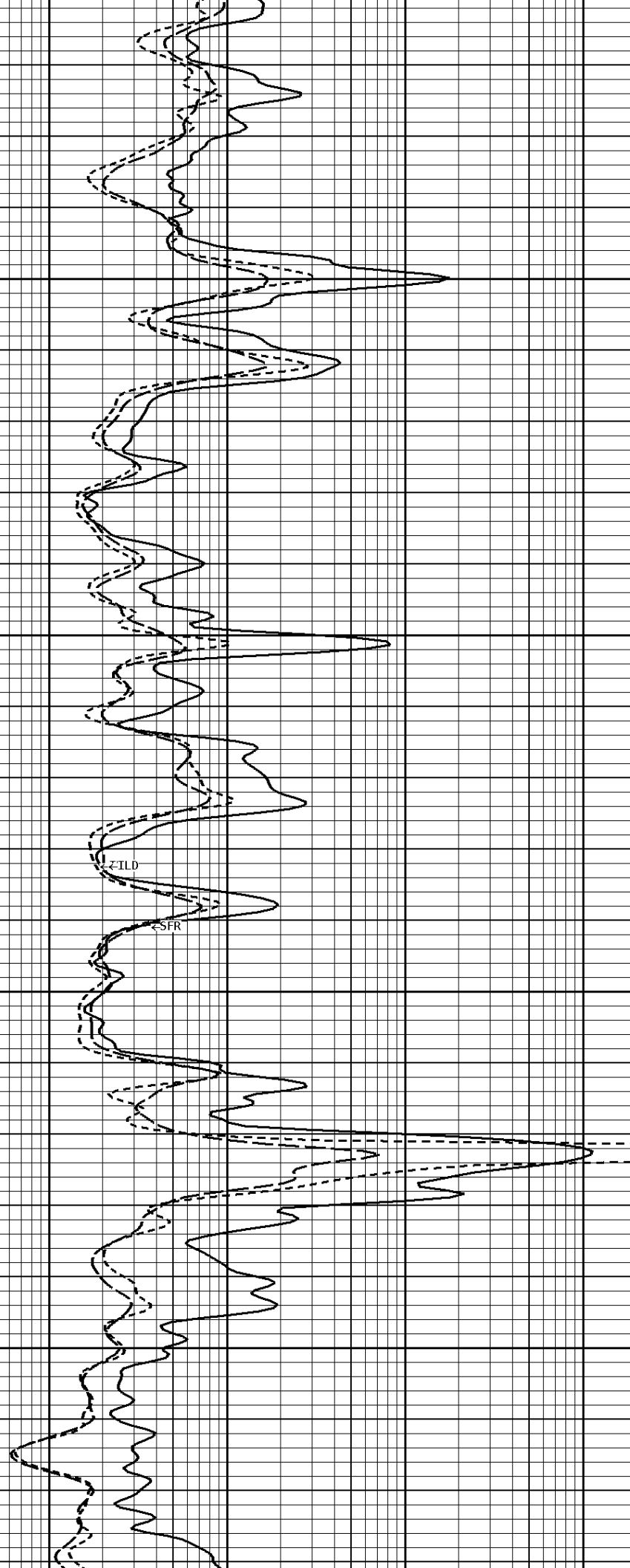
300

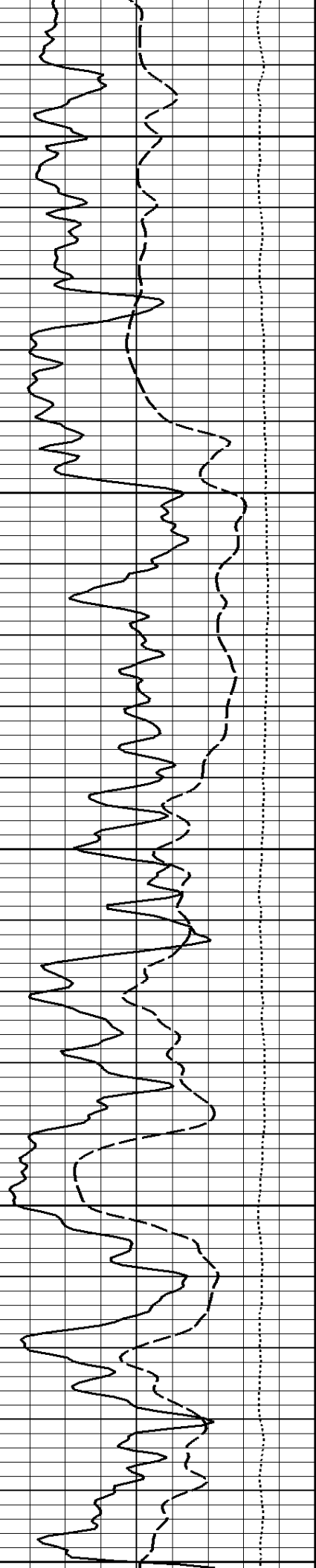




400

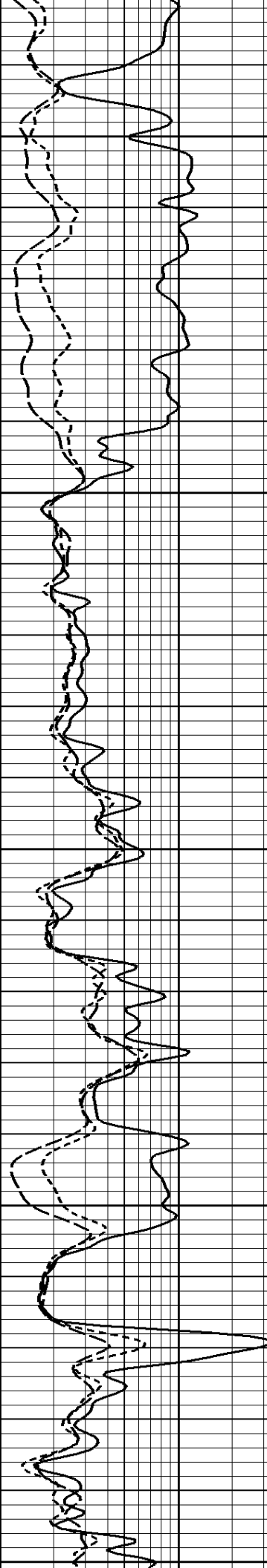
500

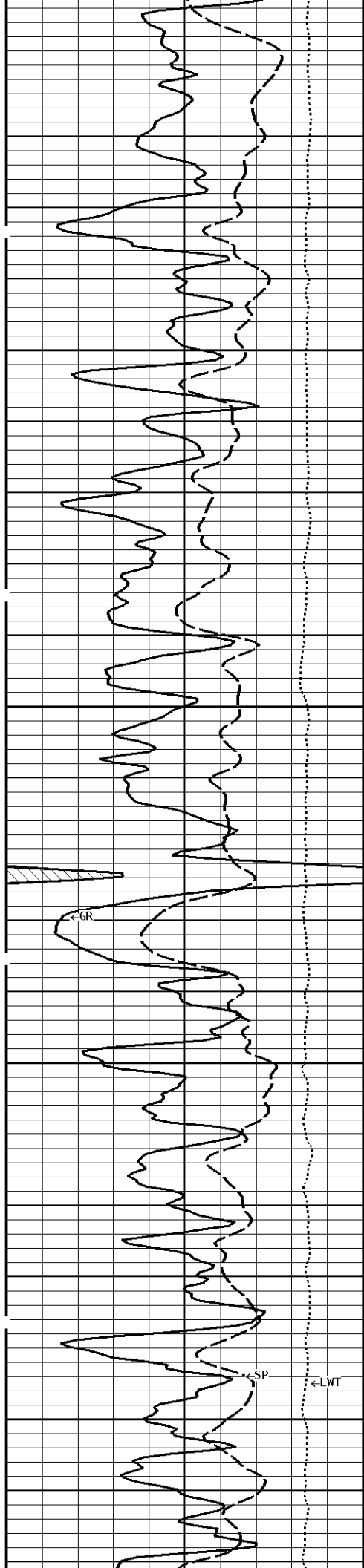




600

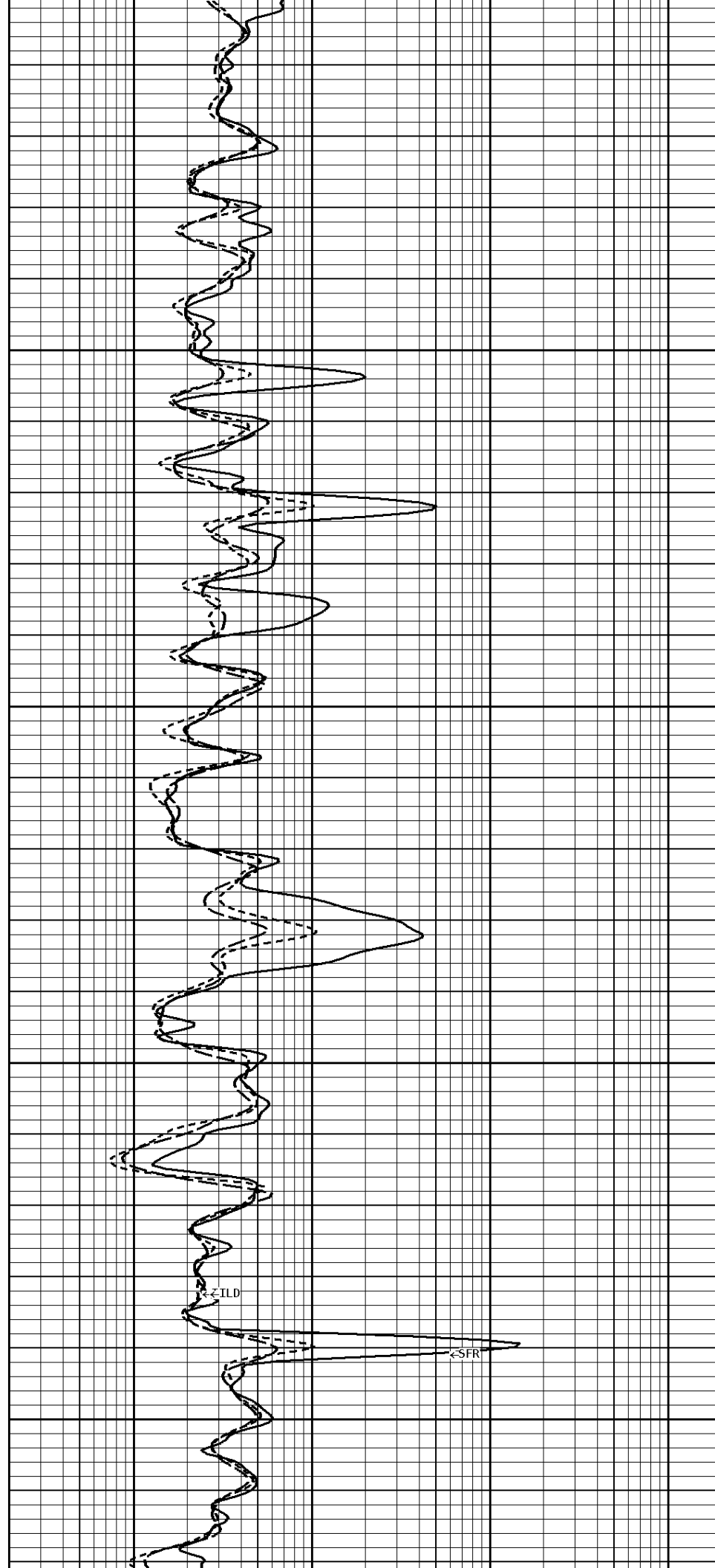
700





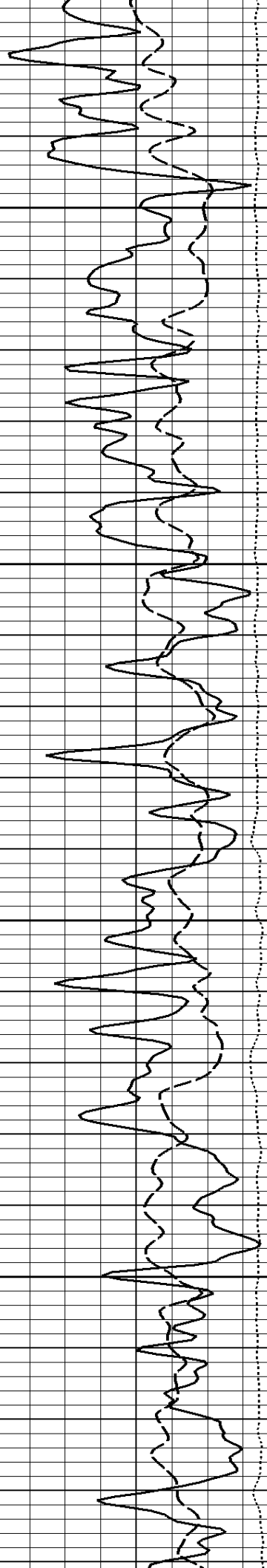
800

900



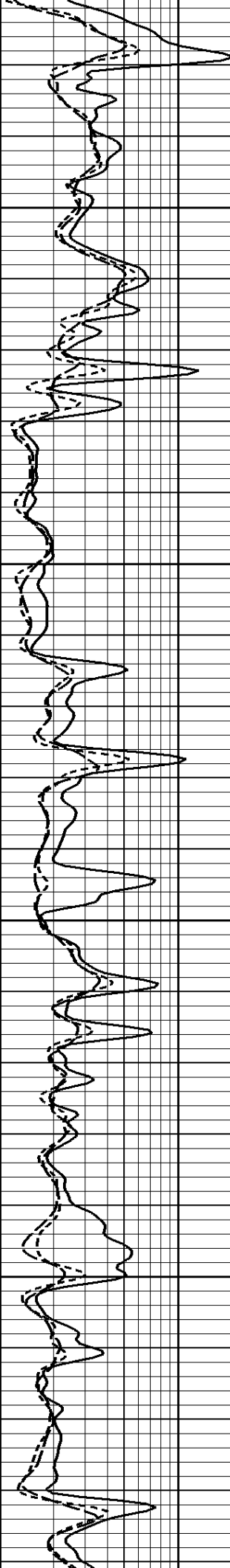
←ILD

←SFR



1000

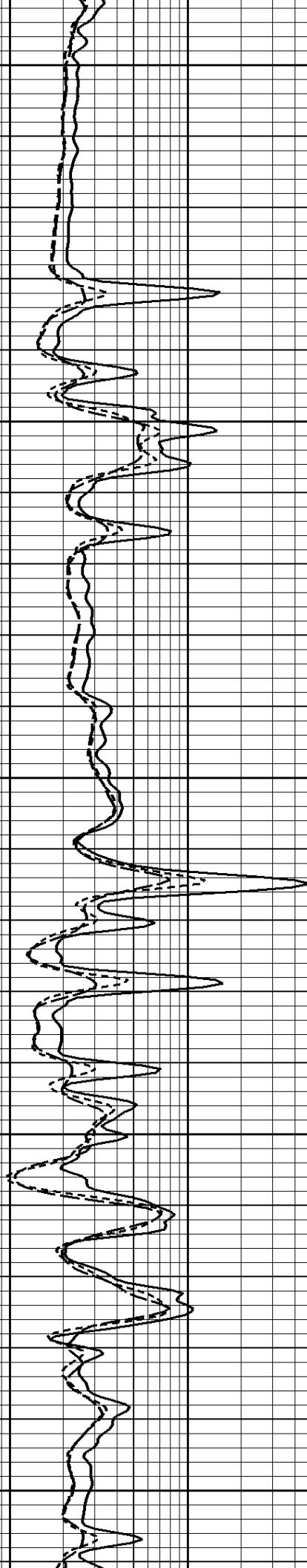
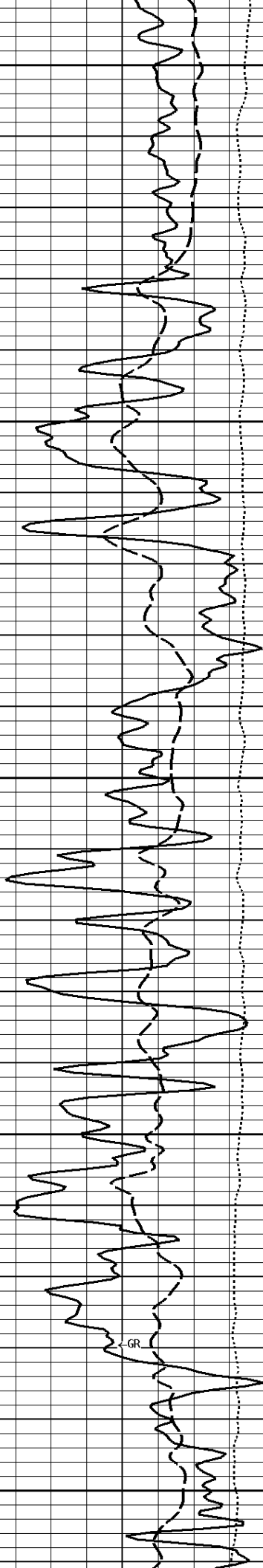
1100

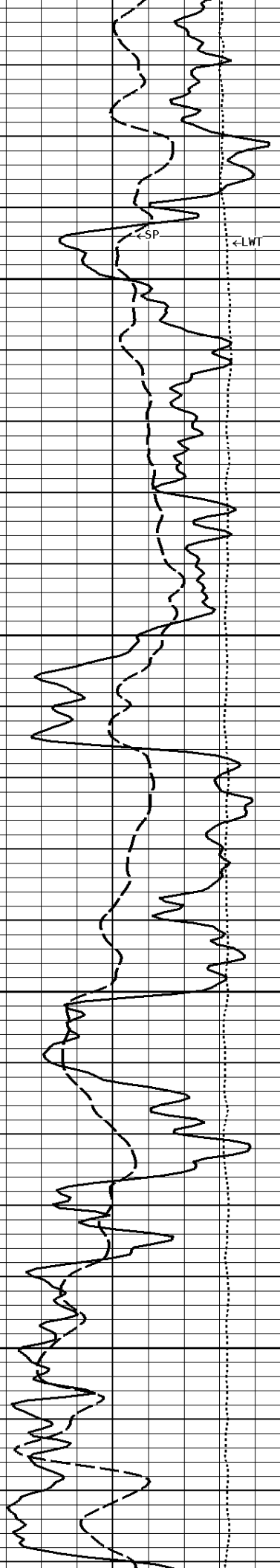


1200

1300

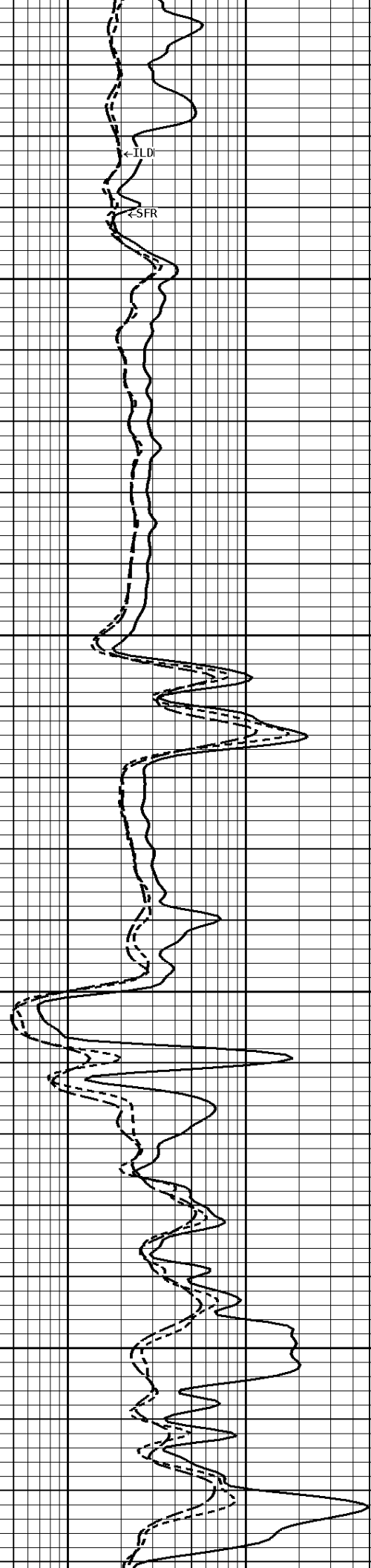
1400

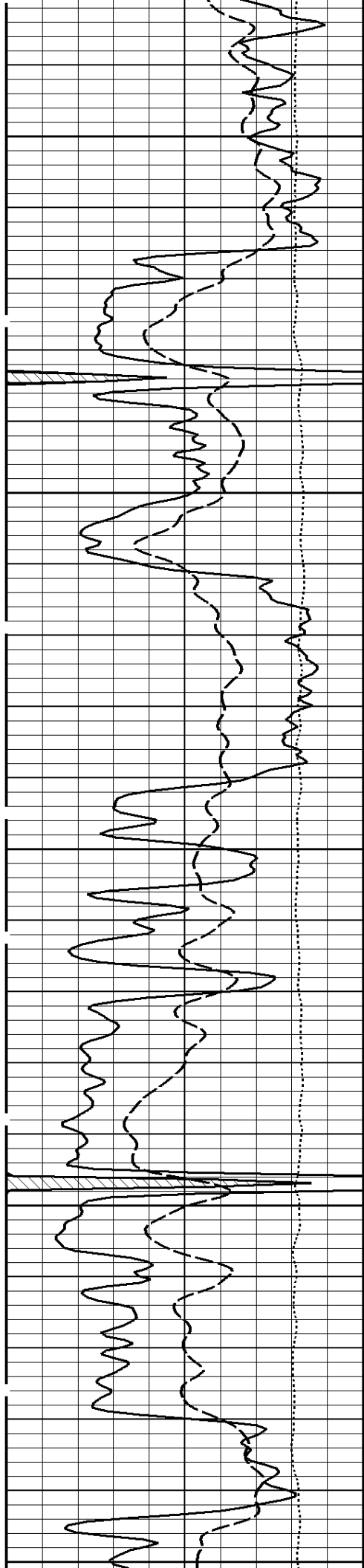




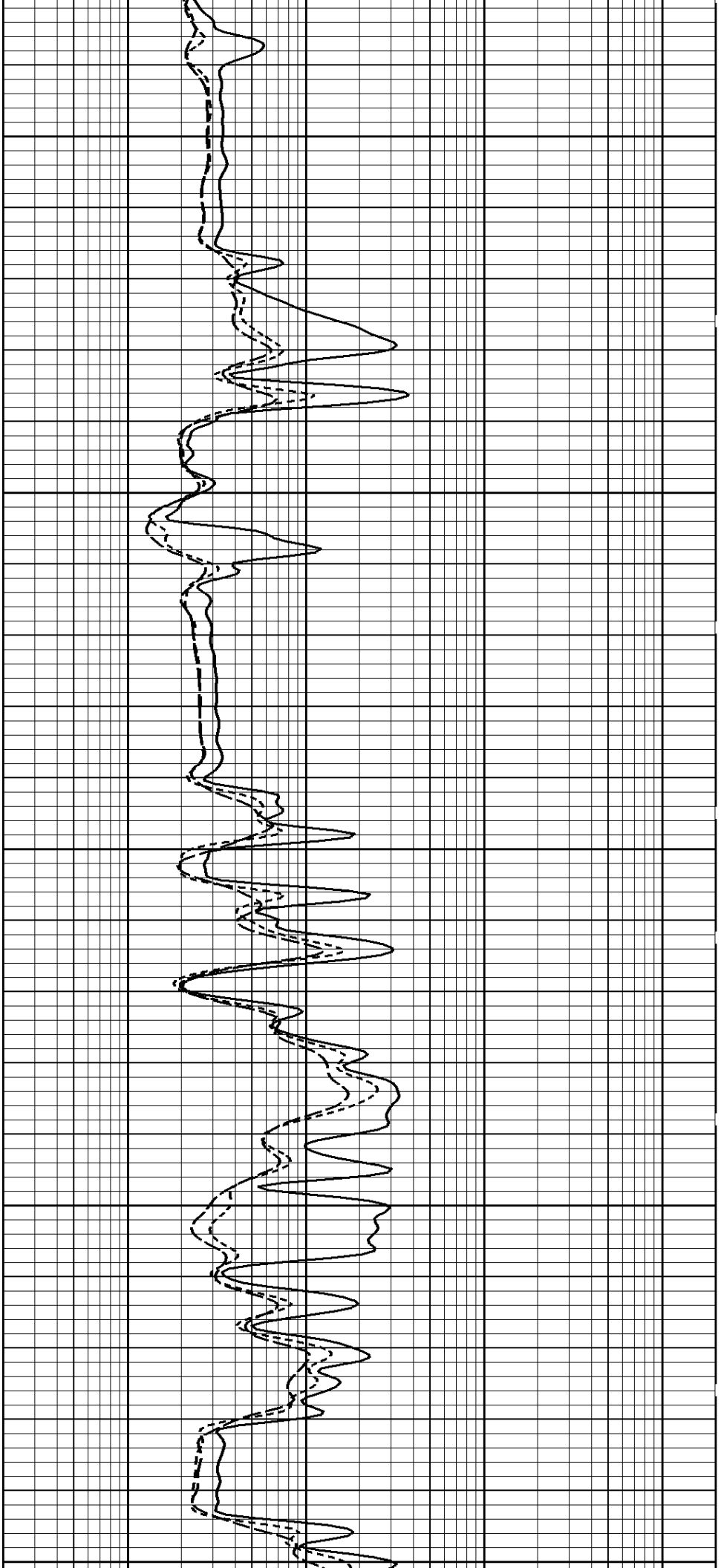
1500

1600

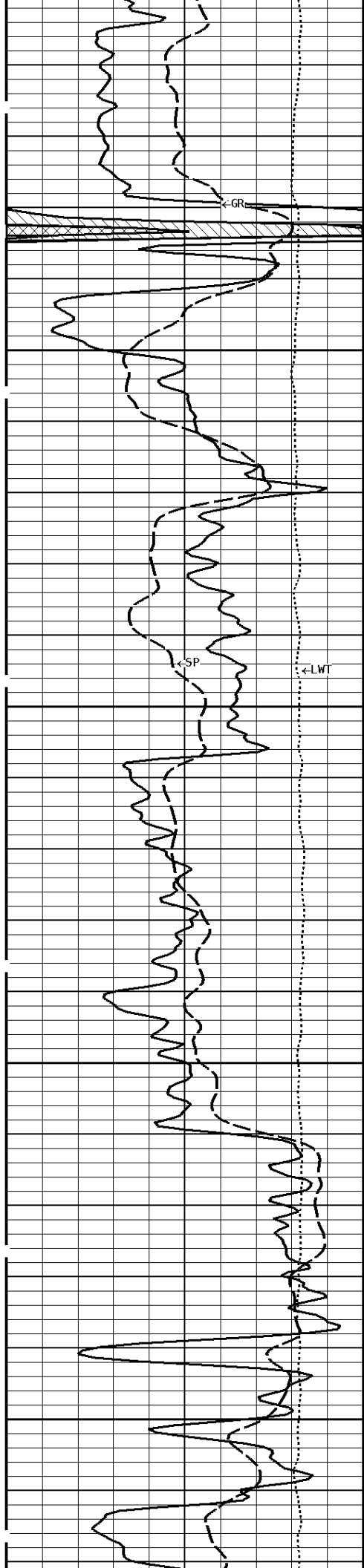




1700

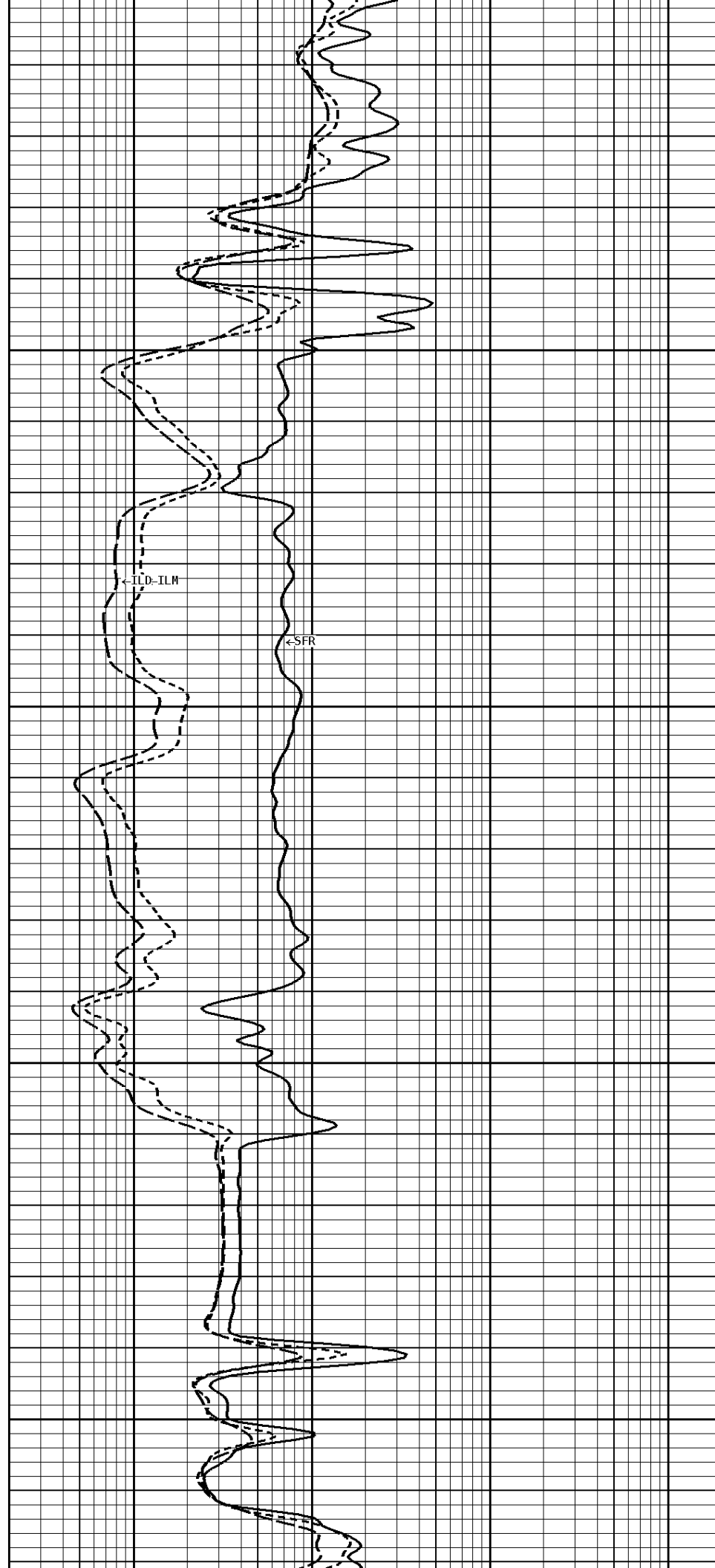


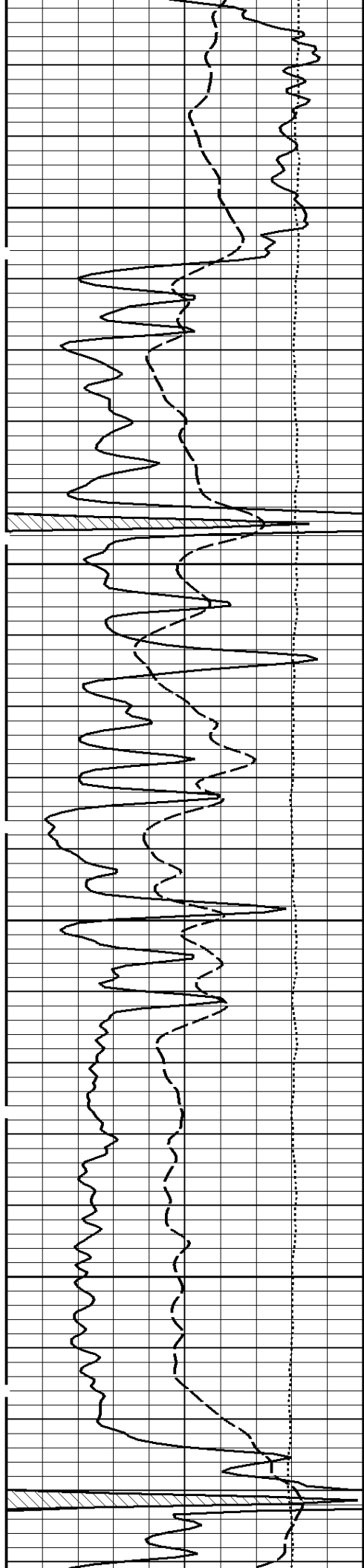
1800



1900

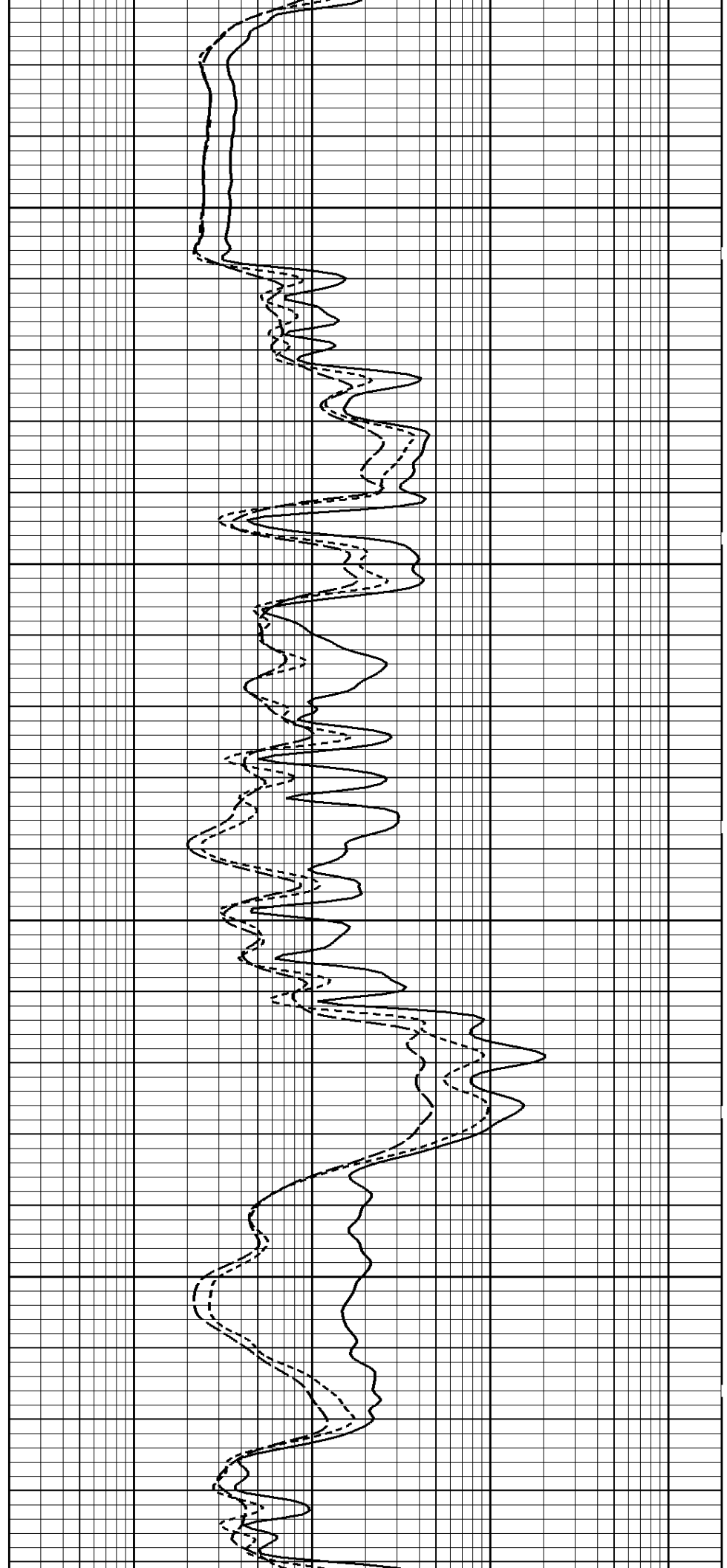
2000



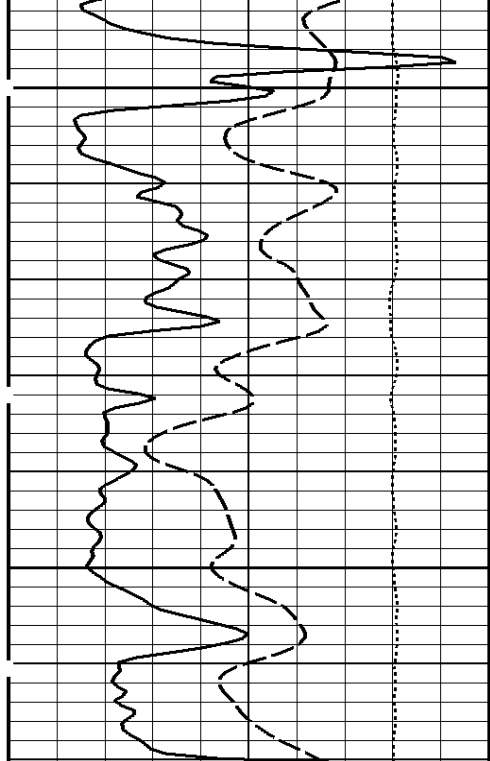


2100

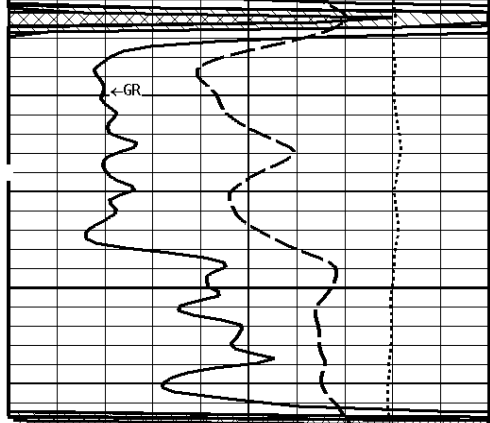
2200



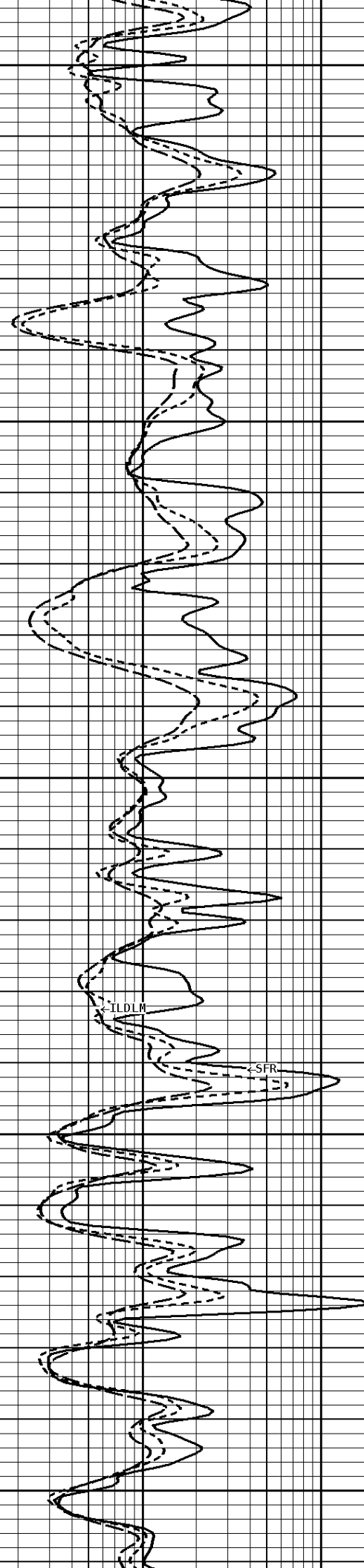
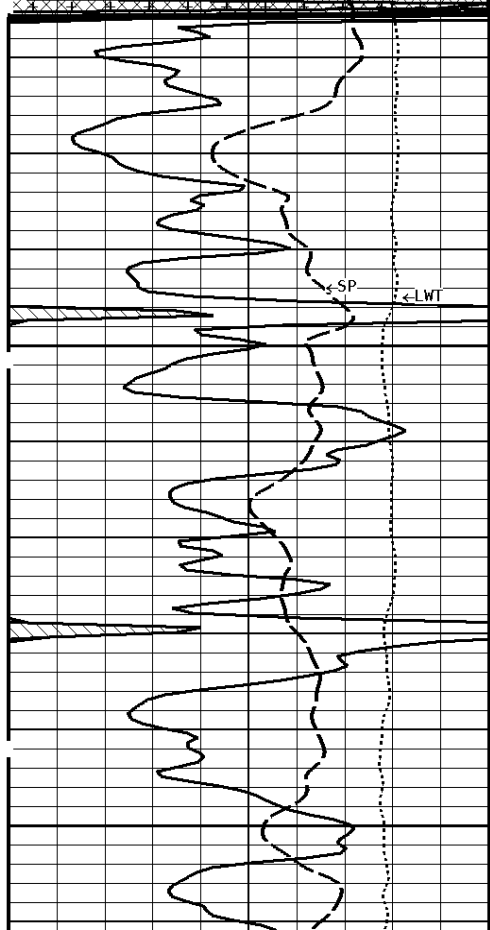
2300

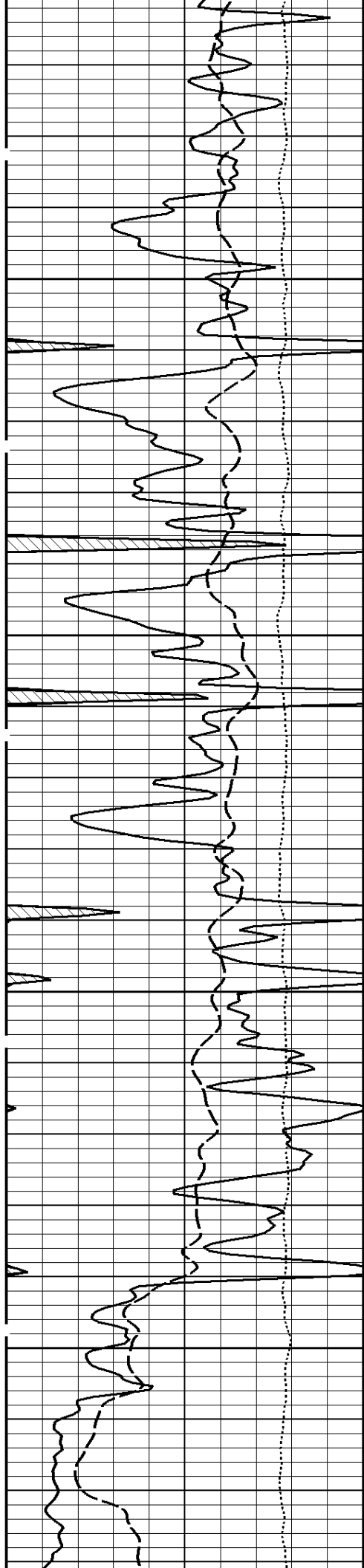


2400



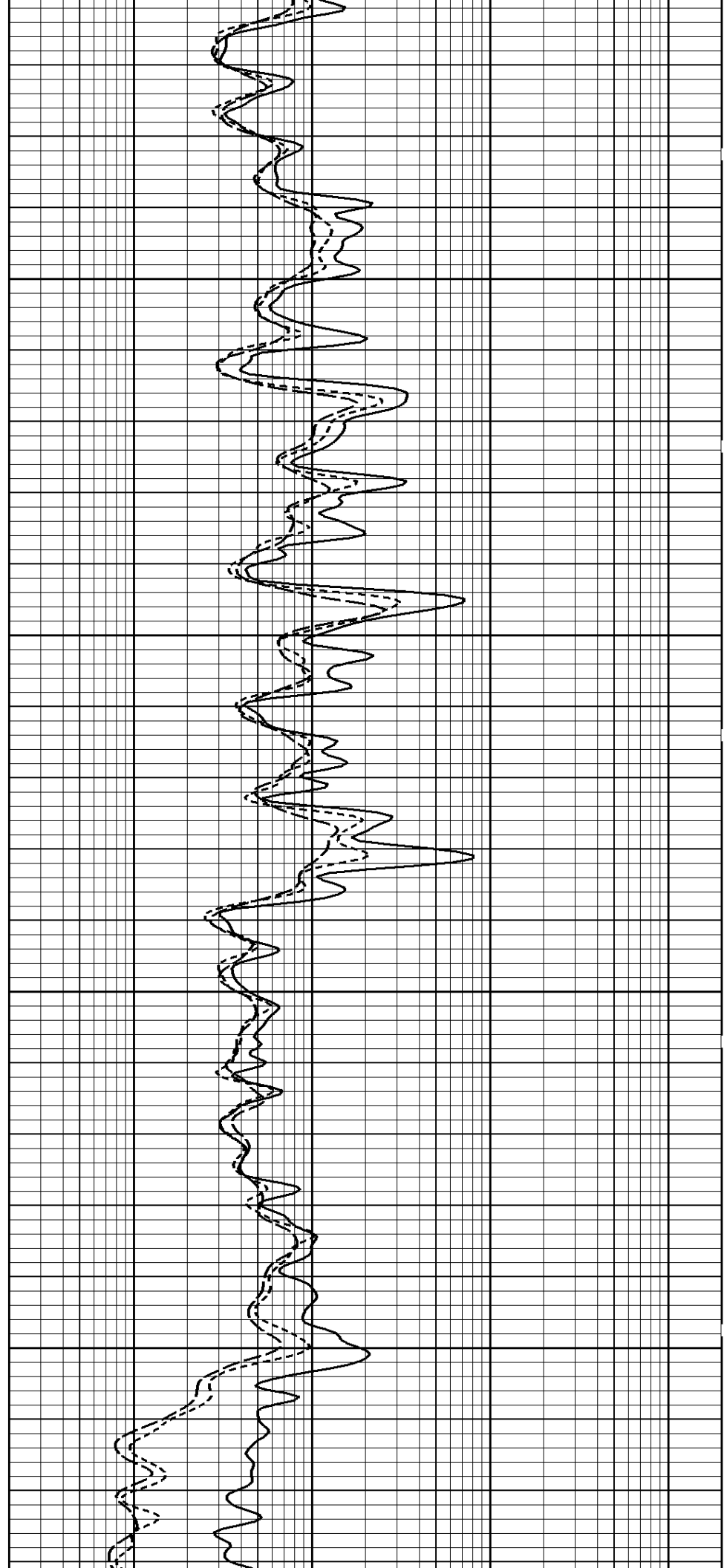
2500

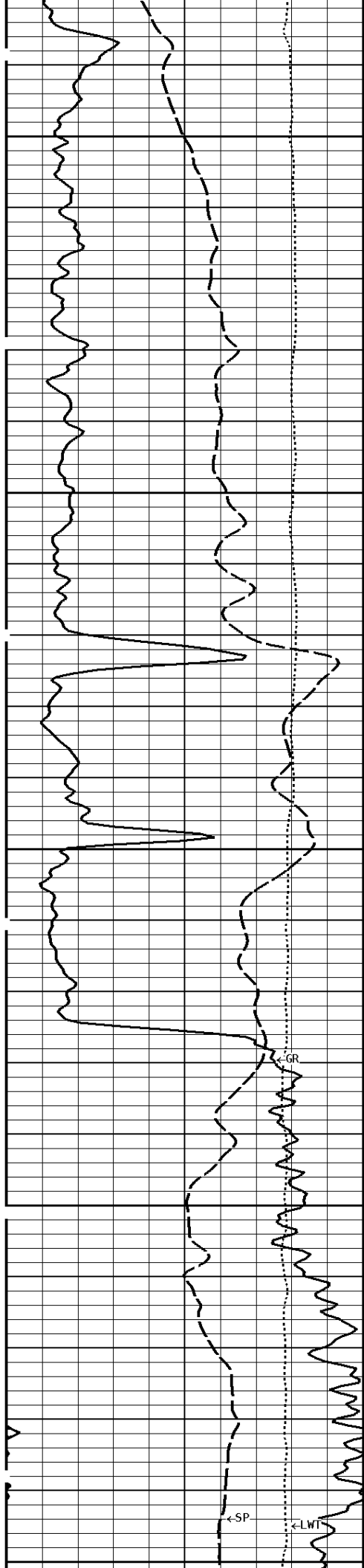




2600

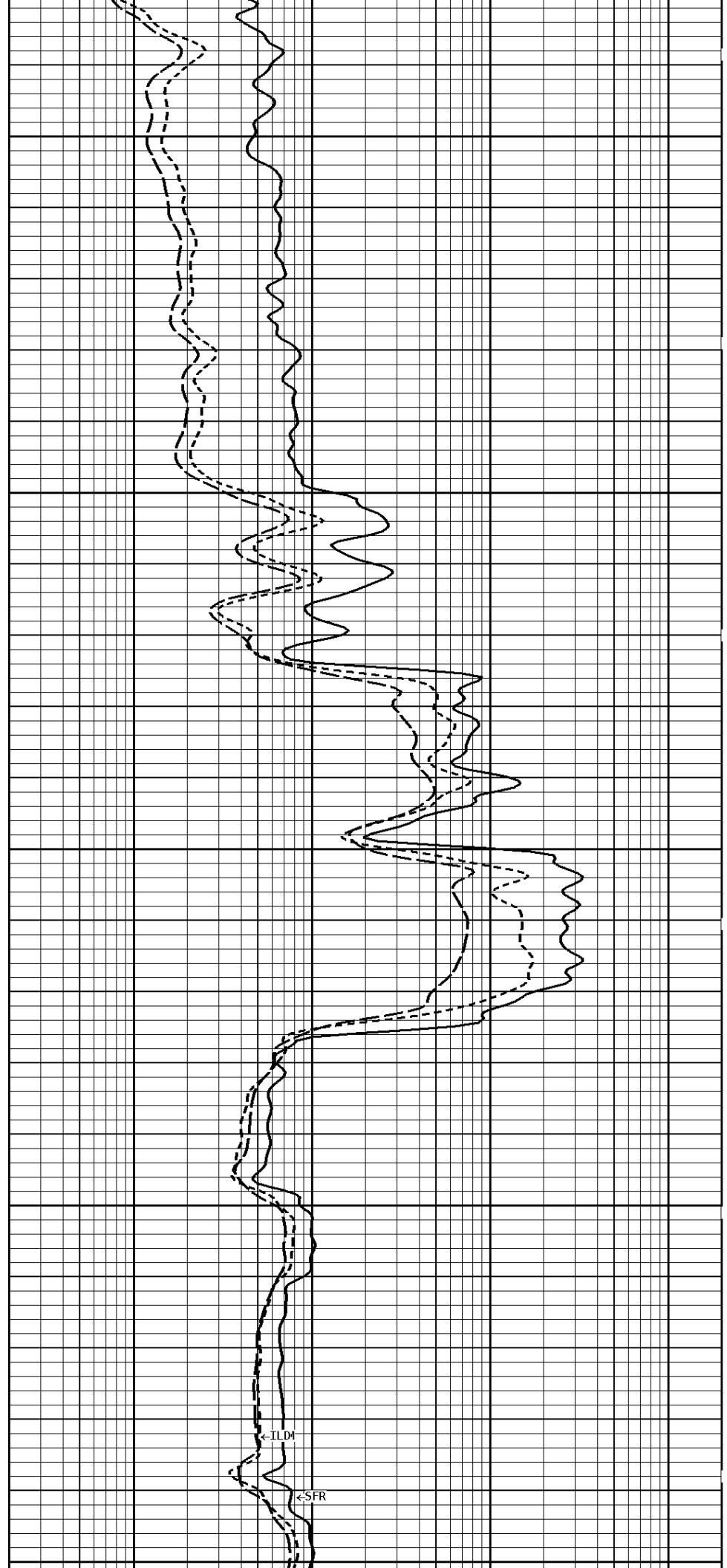
2700





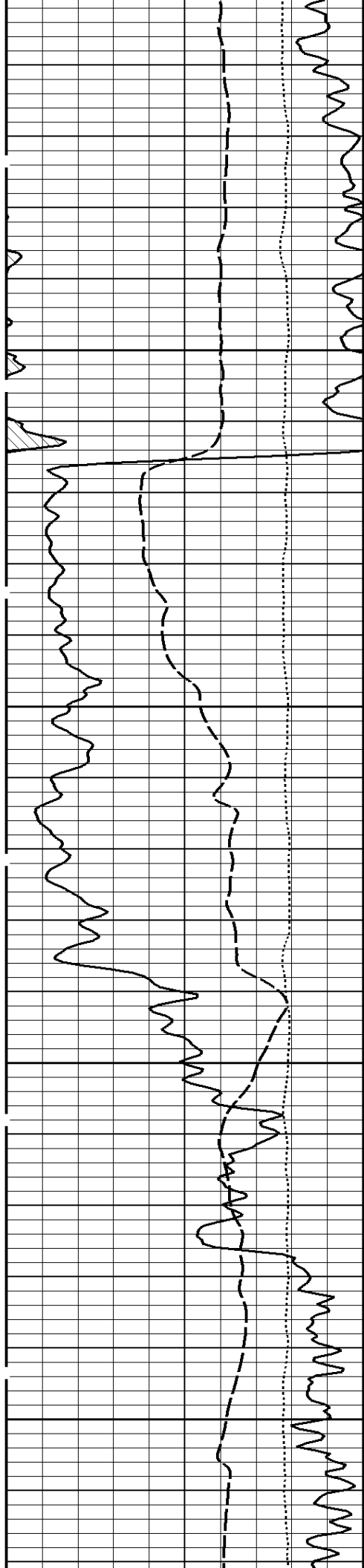
2800

2900



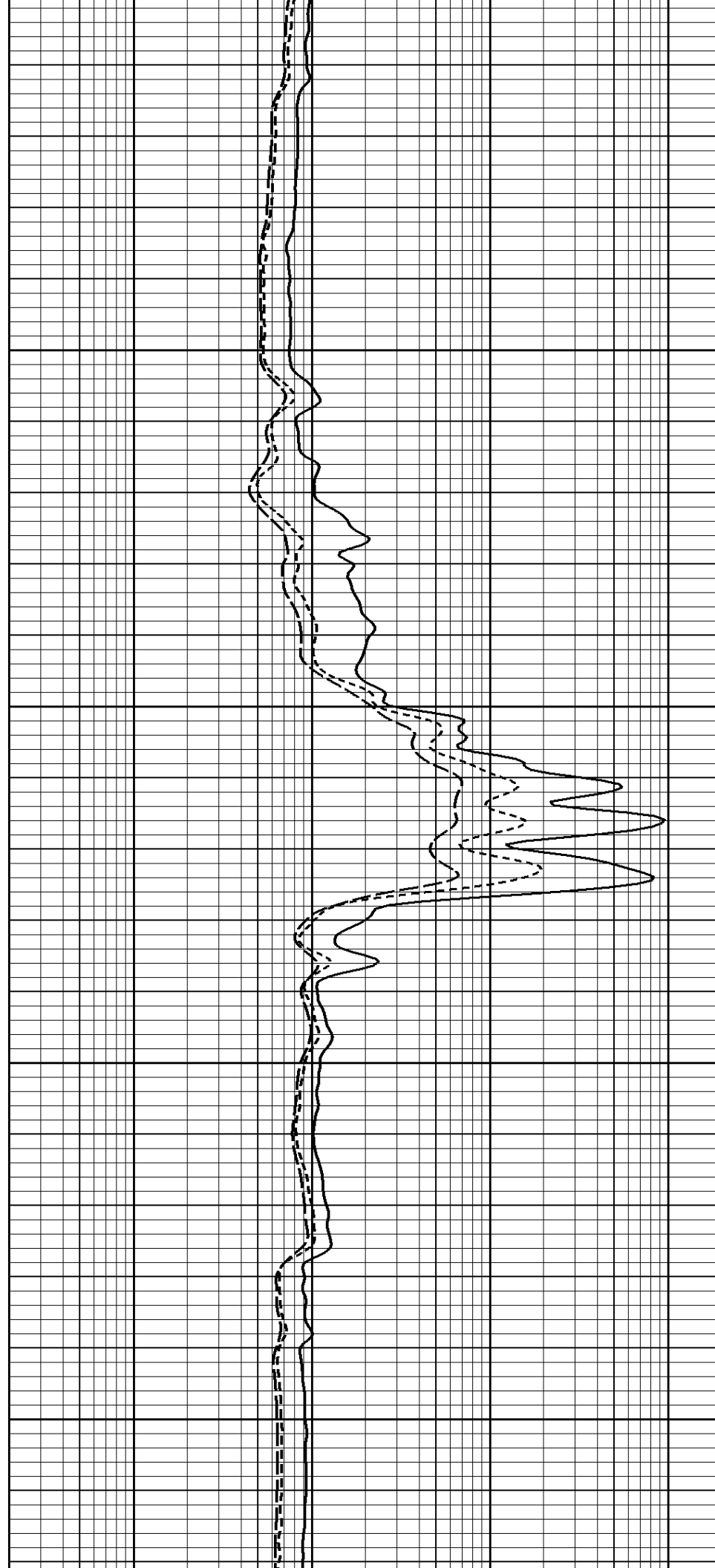
←ILD1

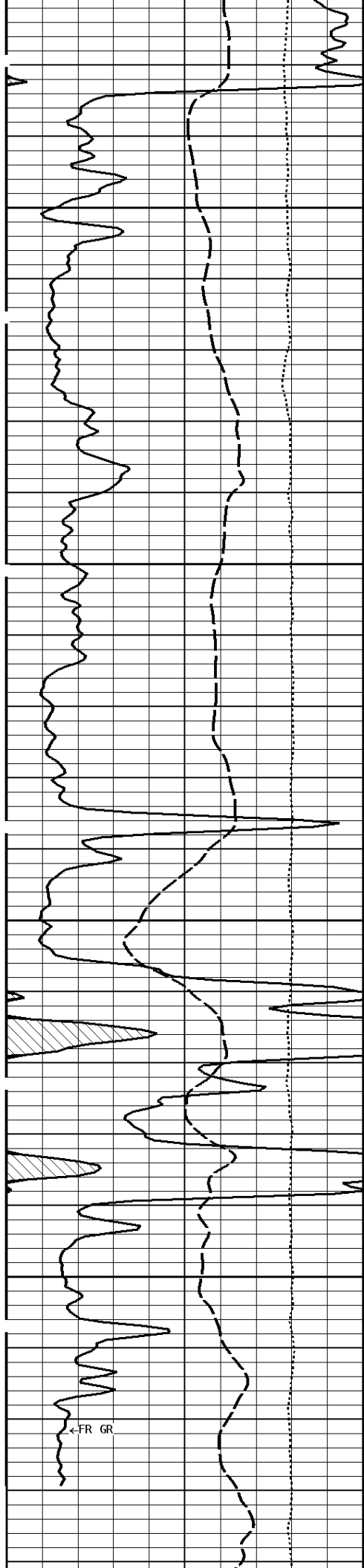
←SFR



3000

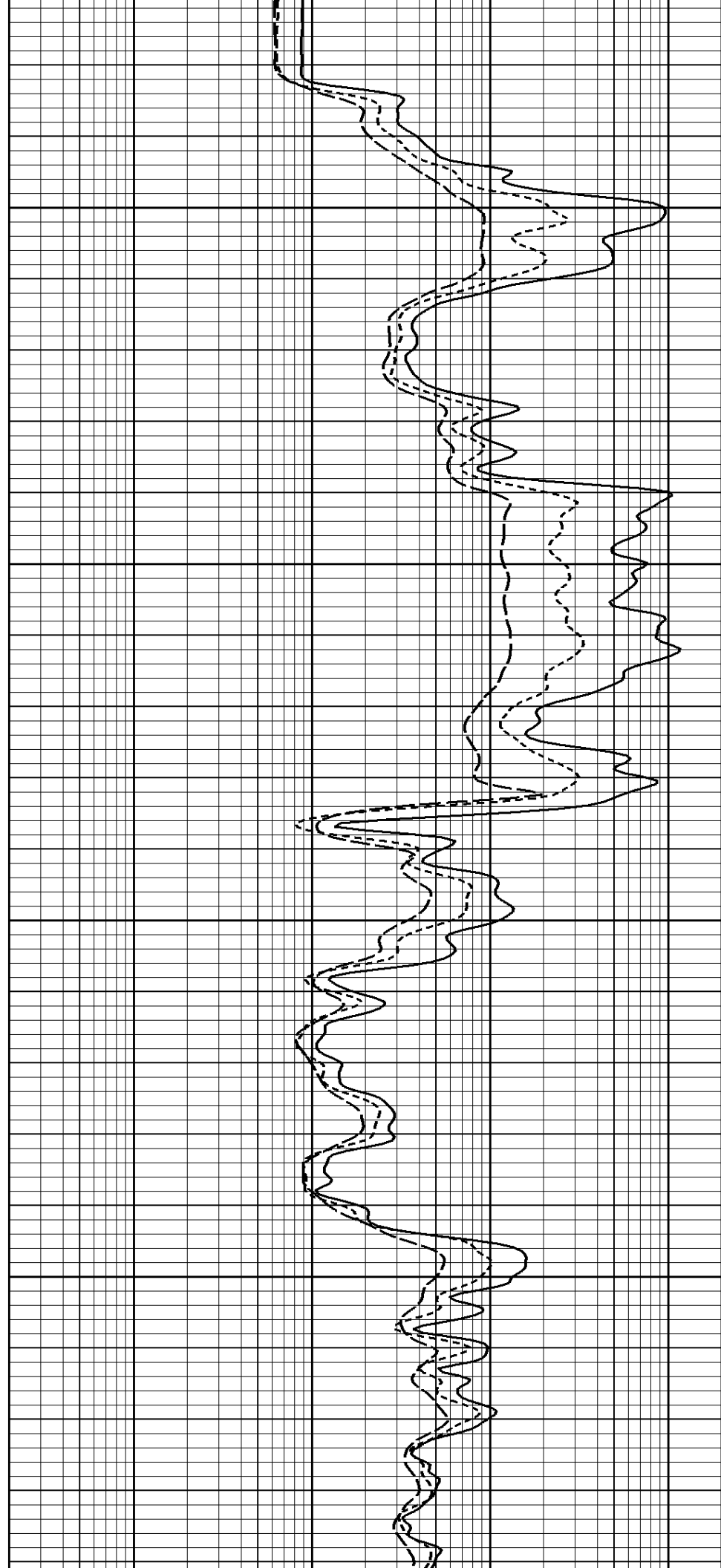
3100

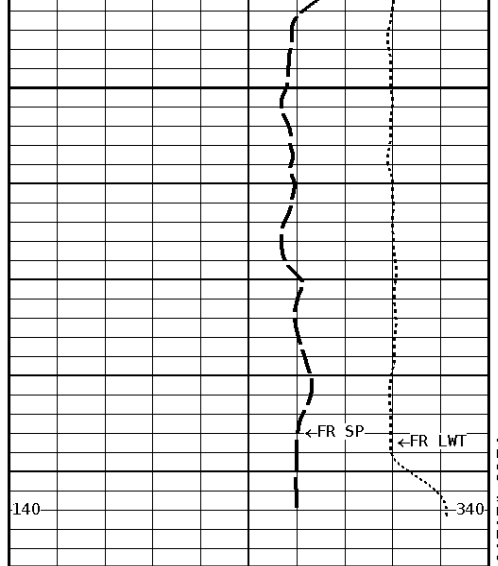




3200

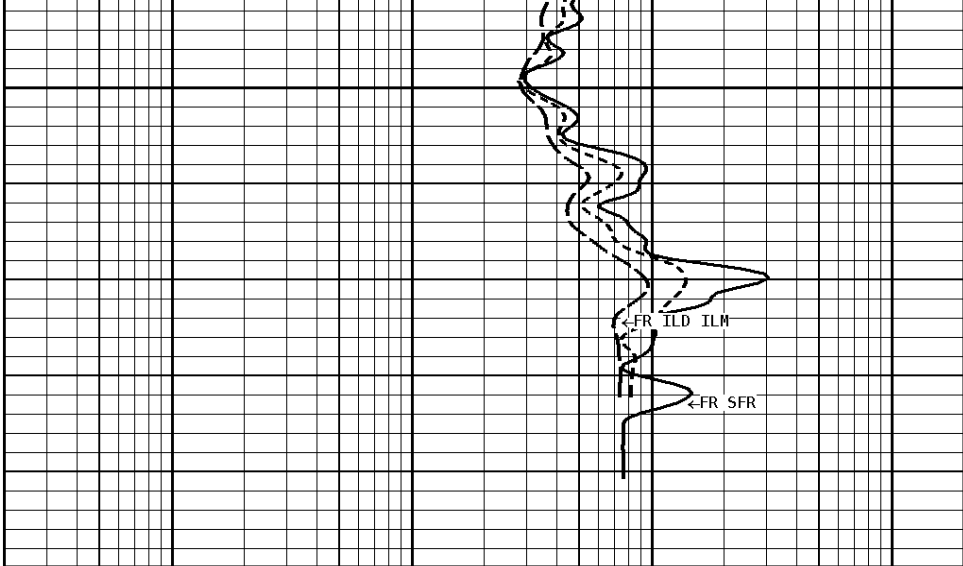
3300





3400

3439



1:240 MAIN SECTION

GAMMA RAY API UNITS 150 0 300 150
TENSION LBS 10000 0
SPONTANEOUS POTENTIAL mV → ← 20

SHALLOW FOCUSED RESISTIVITY OHMM 0.2 2000.0
MEDIUM INDUCTION OHMM 0.2 2000.0
DEEP INDUCTION OHMM 0.2 2000.0

*** Borehole Zone Factors ***

Zone 1 99999.0 to 0.0 Feet	
Drill Bit Size _____	7.875 in
Casing Diameter _____	5.500 in
BHT Depth _____	3439.000 ft
Borehole Temperature _____	110.0 degF
Temperature Gradient _____	1.00 DFHF
Resistivity Of Mud _____	1.000 ohm/m
Standoff _____	1.5
Resistivity Of Mud Temperature _____	50.00 degF

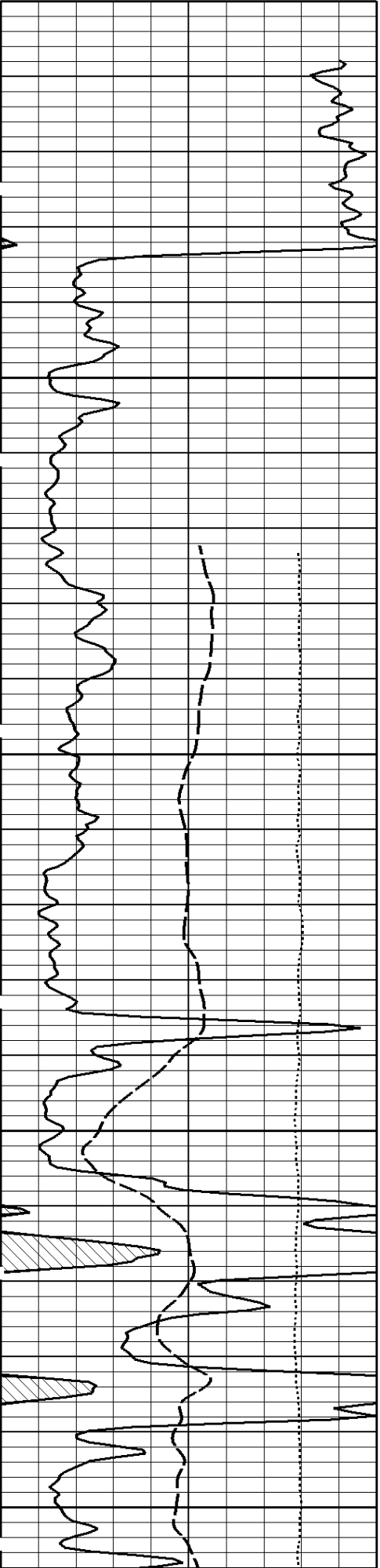
Well File: sono-unru-1-quint-dec-7	Scale: 1:240	Format: DIL-240
Segment: V1.D1.S4 RP	Acquired: 2014-12/07 03:10 3.4.0-13284	
Reference: 0	Processed: 2014-12/07 04:54 3.4.0-13284	

SPONTANEOUS POTENTIAL mV → ← 20
TENSION LBS 10000 0
GAMMA RAY API UNITS 150 0 300 150

DEEP INDUCTION OHMM 0.2 2000.0
MEDIUM INDUCTION OHMM 0.2 2000.0
SHALLOW FOCUSED RESISTIVITY OHMM 0.2 2000.0

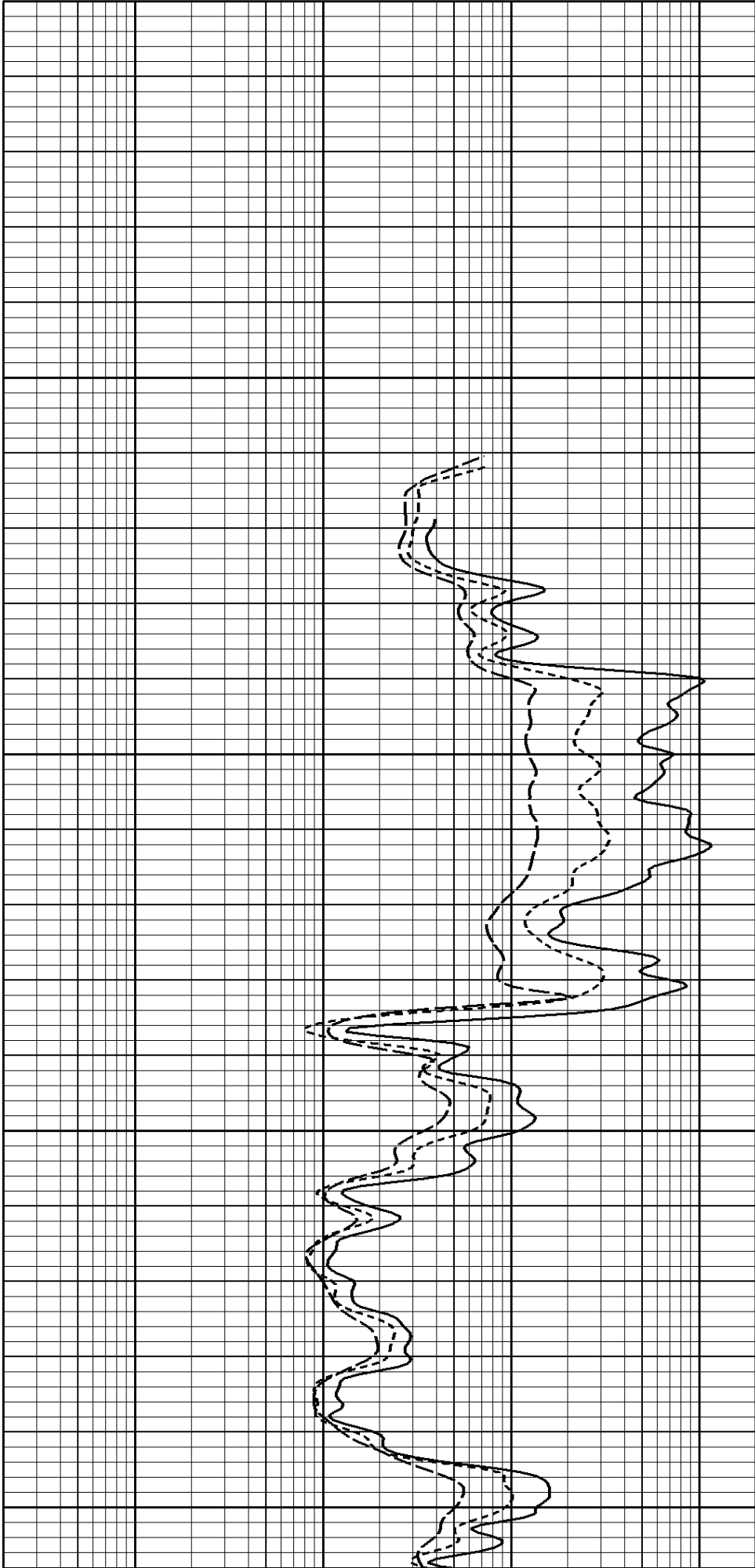
1:240 REPEAT SECTION

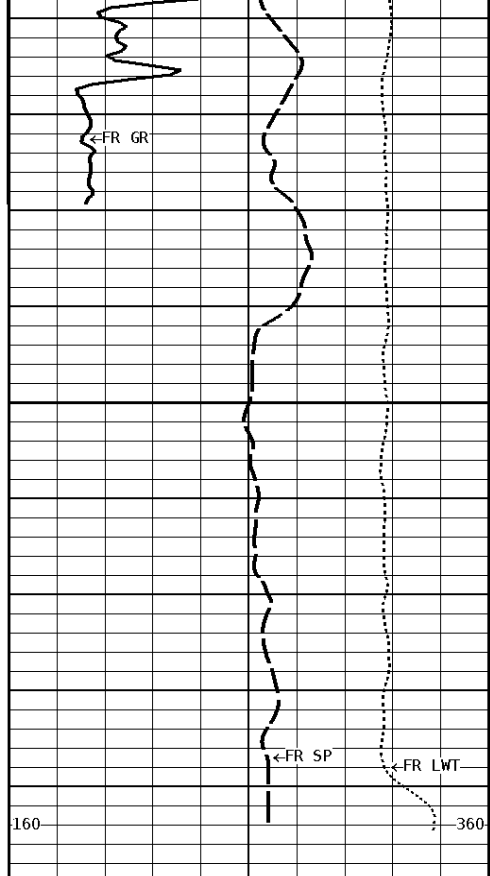
File #1.1.4



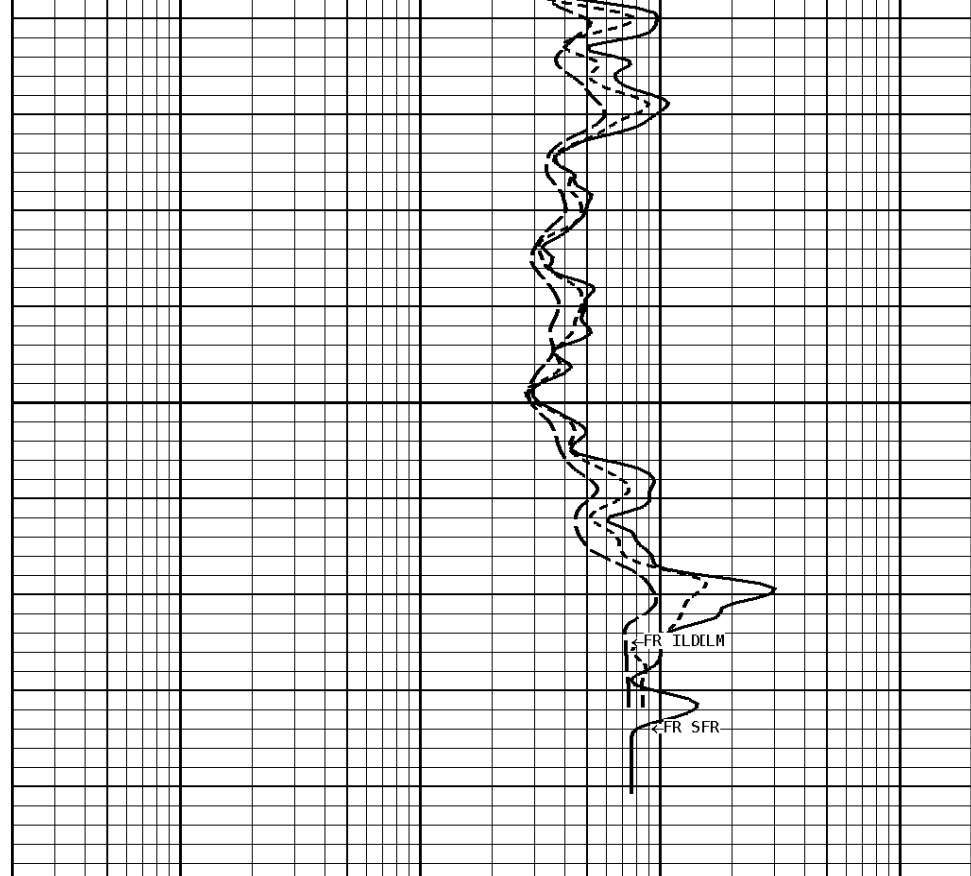
3200

3300





3400
3439



1:240 REPEAT SECTION

GAMMA RAY API UNITS	
150 0	300 150
TENSION LBS	
10000	0
SPONTANEOUS POTENTIAL mV	
→	←20

SHALLOW FOCUSED RESISTIVITY OHMM	
0.2	2000.0
MEDIUM INDUCTION OHMM	
0.2	2000.0
DEEP INDUCTION OHMM	
0.2	2000.0

*** Borehole Zone Factors ***

Zone 1 99999.0 to 0.0 Feet		
Drill Bit Size	7.875	in
Casing Diameter	5.500	in
BHT Depth	3439.000	ft
Borehole Temperature	110.0	degF
Temperature Gradient	1.00	DFHF
Resistivity Of Mud	1.000	ohm/m
Standoff	1.5	
Resistivity Of Mud Temperature	50.00	degF

*** Calibration Summary ***

Shop Calibration GRT-B			
Performed : 05-NOV-2014		Time : 11:49	
Sensor Suite : GR-GR5		ID : GRT-BB-109	
Measured	Units	Calibrated	Units
Background	Jig	Jig	

**Shop Calibration
PIT-CA**

Performed : 10-Sep-2014 Time : 11:40
Sensor Suite : P-IND-T ID : PIT-CA-075

Medium

	Measured		Calibrated		Units
	R	X	R	X	
Air	131419	129931	1.4	0.2	MMHOS
Zero	131070	131067	-10.2	45.4	MMHOS
Reference	250682	249654	4989.8	5045.4	MMHOS
Loop	129961	216623	3595.7	3716.3	MMHOS
Sonde Error			0.5	-7.1	MMHOS
Cond			4989.8	5045.4	MMHOS

Deep

	Measured		Calibrated		Units
	R	X	R	X	
Air	128119	131856	0.3	-1.2	MMHOS
Zero	131062	131059	52.1	-18.8	MMHOS
Reference	238518	237019	2052.1	1981.2	MMHOS
Loop	126986	223844	1715.5	1756.2	MMHOS
Sonde Error			-6.7	0.1	MMHOS
Cond			2052.1	1981.2	MMHOS

Temperature

	Measured		Calibrated		Units
	Low	High	Low	High	
	16980.0	56920.0	70.0	350.0	DEGF

Performed : 10-Sep-2014 Time : 11:51
Sensor Suite : SFL ID : PIT-CA-075

Internal

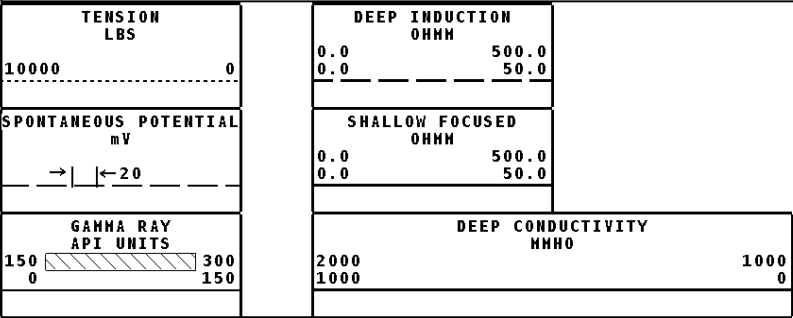
	Measured		Calibrated		Units
	Zero	Reference	Zero	Reference	
Im	32770.2	49049.9	0.0	7028.0	uA
Ib	32767.1	49093.1	0.0	1750.0	mA
MOM1	32794.6	56675.8	0.0	175.0	mV
Equivalent SFL				43.97	OHMM

Performed : 10-SEP-2014 Time : 11:47
Sensor Suite : P-SP ID : PIT-CA-075

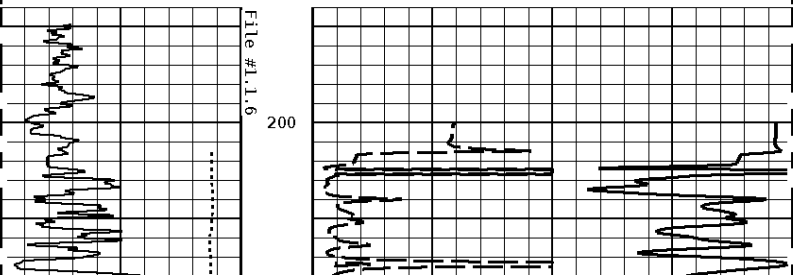
Internal

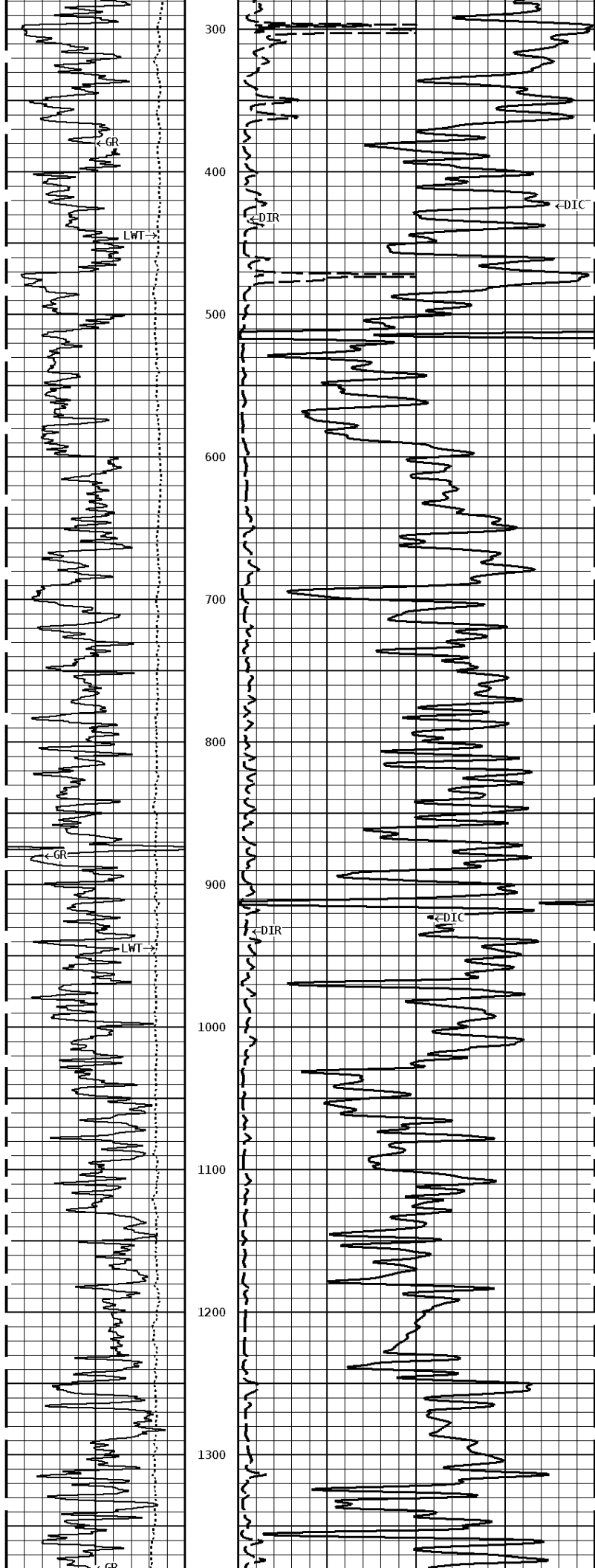
	Measured		Calibrated		Units
	Zero	Reference	Zero	Reference	
	32768.0	58944.2	0.0	1000.0	mV

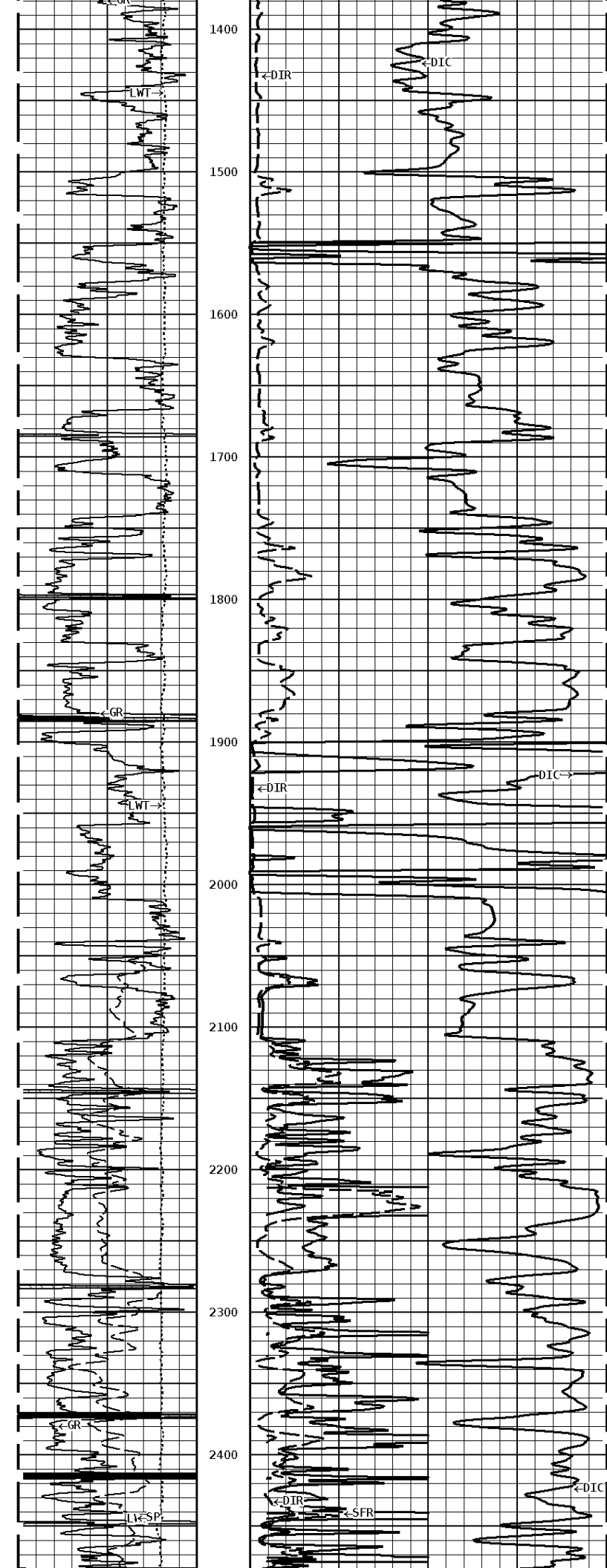
Well File: sono-unru-1-quint-dec-7 **Scale:** 1:1200 **Format:** DIL1200
Segment: V1.D1.S6 MAIN **Acquired:** 2014-12/07 03:23 3.4.0-13284
Reference: 0 **Processed:** 2014-12/07 04:54 3.4.0-13284

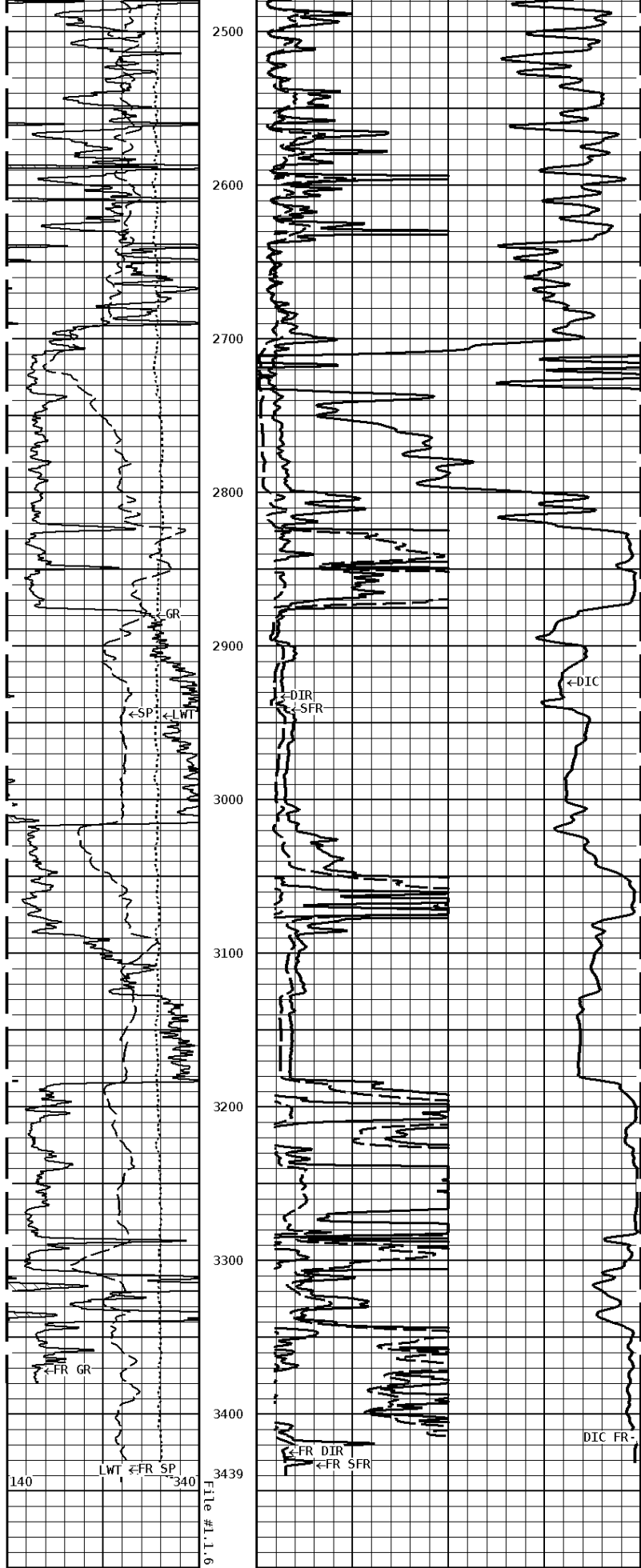


1:1200 MAIN SECTION









1:1200 MAIN SECTION

CANAL BAY

DEEP CONDUCTIVITY

GAMMA RAY API UNITS	
150	300
0	150
SPONTANEOUS POTENTIAL mV	
→ ← 20	
TENSION LBS	
10000	0

DEEP CONDUCTIVITY MHMO	
2000	1000
1000	0
SHALLOW FOCUSED OHMM	
0.0	500.0
0.0	50.0
DEEP INDUCTION OHMM	
0.0	500.0
0.0	50.0



Tucker
ENERGY SERVICES

Company: SONOMA RESOURCES LLC.
 Well: URUH #1
 Location: 1800' FSL & 2310' FWL
 Logged: 12-07-2014
 K.B. Elev: 1459.0 Ft