



Pioneer Energy Services

Microresistivity Log

15-051-26,730-00-00

API No.

Company **Gore Oil Company**
 Well **Kingsley #5**
 Field **Spring Brook**
 County **Ellis** State **Kansas**

Other Services
CNL/CDL
DIL

Location **2150' FSL & 1100' FEL**
 Sec: **17** Twp: **14S** Rge: **20W**

Permanent Datum **Ground Level** Elevation **2162**
 Log Measured From **Kelly Bushing** **6** Ft. Above Perm. Datum
 Drilling Measured From **Kelly Bushing**

Elevation
K.B. 2168
D.F. 2162
G.L. 2162

Date	10/29/2014
Run Number	Two
Depth Driller	3900
Depth Logger	3902
Bottom Logged Interval	3901
Top Log Interval	3000
Casing Driller	8.625 @ 266
Casing Logger	263
Bit Size	7.875
Type Fluid in Hole	Chemical
Salinity, ppm CL	5.000
Density / Viscosity	9.2 48
pH / Fluid Loss	9.0 9.2
Source of Sample	Flowline
Rm @ Meas. Temp	.75 @ 58
Rmf @ Meas. Temp	.56 @ 58
Rmc @ Meas. Temp	1.01 @ 58
Source of Rmf / Rmc	Charts
Rm @ BHT	.38 @ 115
Operating Rig Time	4 Hours
Max Rec. Temp. F	115
Equipment Number	10
Location	Hays
Recorded By	C. Desaire
Witnessed By	Chuck Schmalz

<<< Fold Here >>>

All interpretations are opinions based on inferences from electrical or other measurements and we cannot and do not guarantee the accuracy or correctness of any interpretation, and we shall not, except in the case of gross or willful negligence on our part, be liable or responsible for any loss, costs, damages, or expenses incurred or sustained by anyone resulting from any interpretation made by any of our officers, agents or employees. These interpretations are also subject to our general terms and conditions set out in our current Price Schedule.

Comments

Thank you for using Pioneer Energy Services
 www.pioneeres.com
 785 625 3858

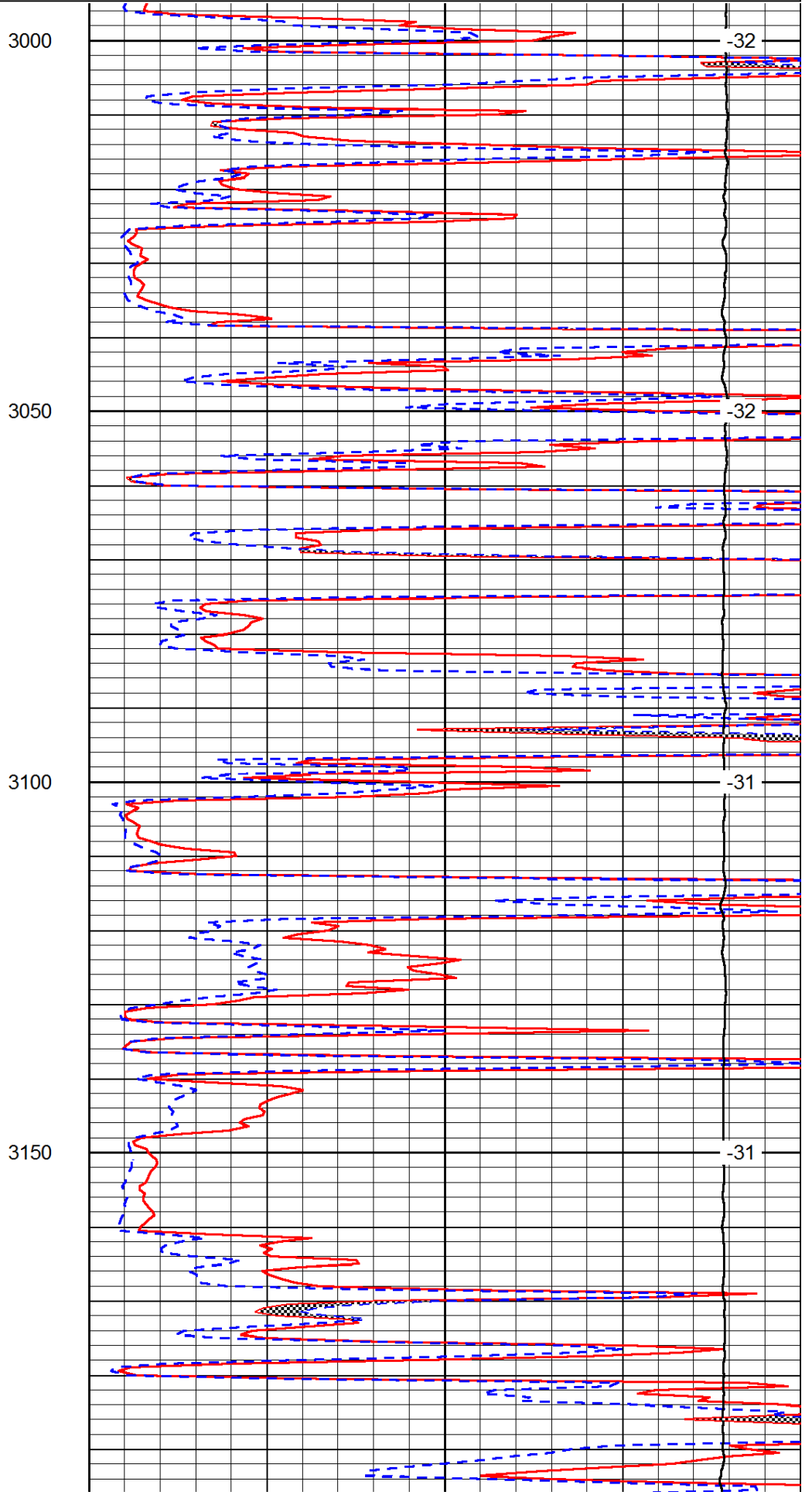
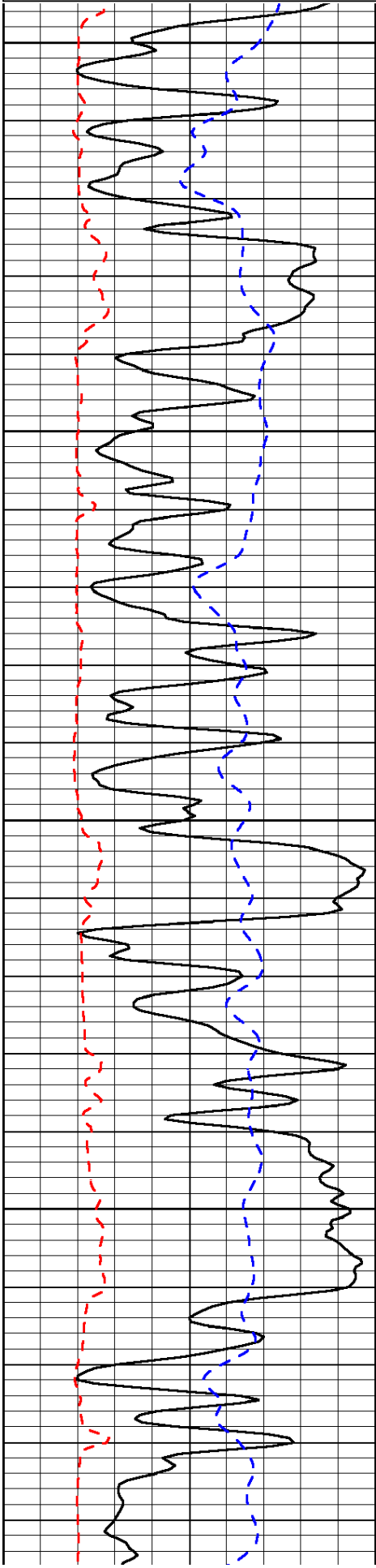
Ellis KS, from I-70 go 8 1/4 S, W Into

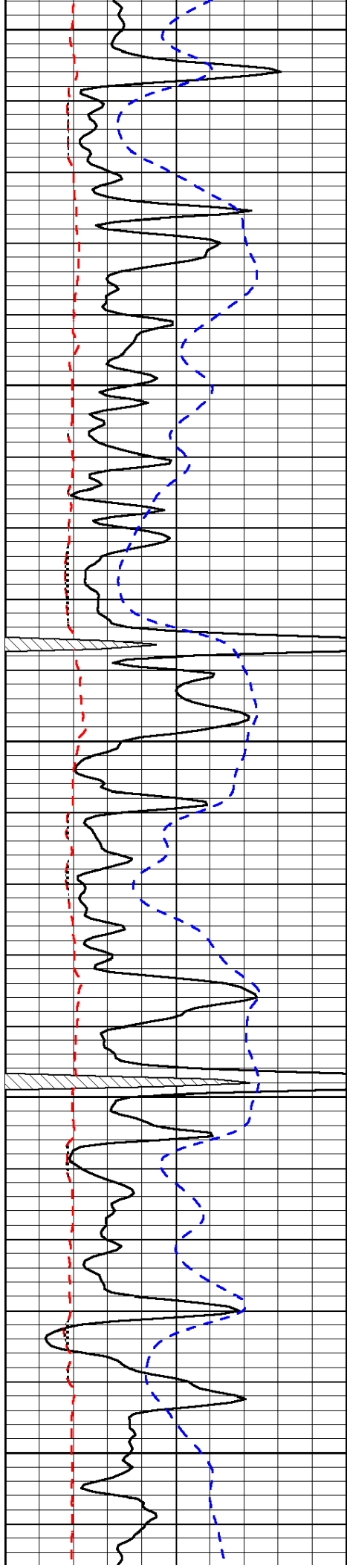
Database File: c:\warrior\data\gore_kingsley #5\gorehd.db
 Dataset Pathname: dil/gorestk
 Presentation Format: micro
 Dataset Creation: Wed Oct 29 08:24:43 2014
 Charted by: Depth in Feet scaled 1:240

0	Gamma Ray	150
6	MCAL (GAPI)	16
-200	SP (mV)	0

0	Micro Inverse 1 X 1	40
0	Micro Normal 2"	40
15000	Line Weight	0

LSPD





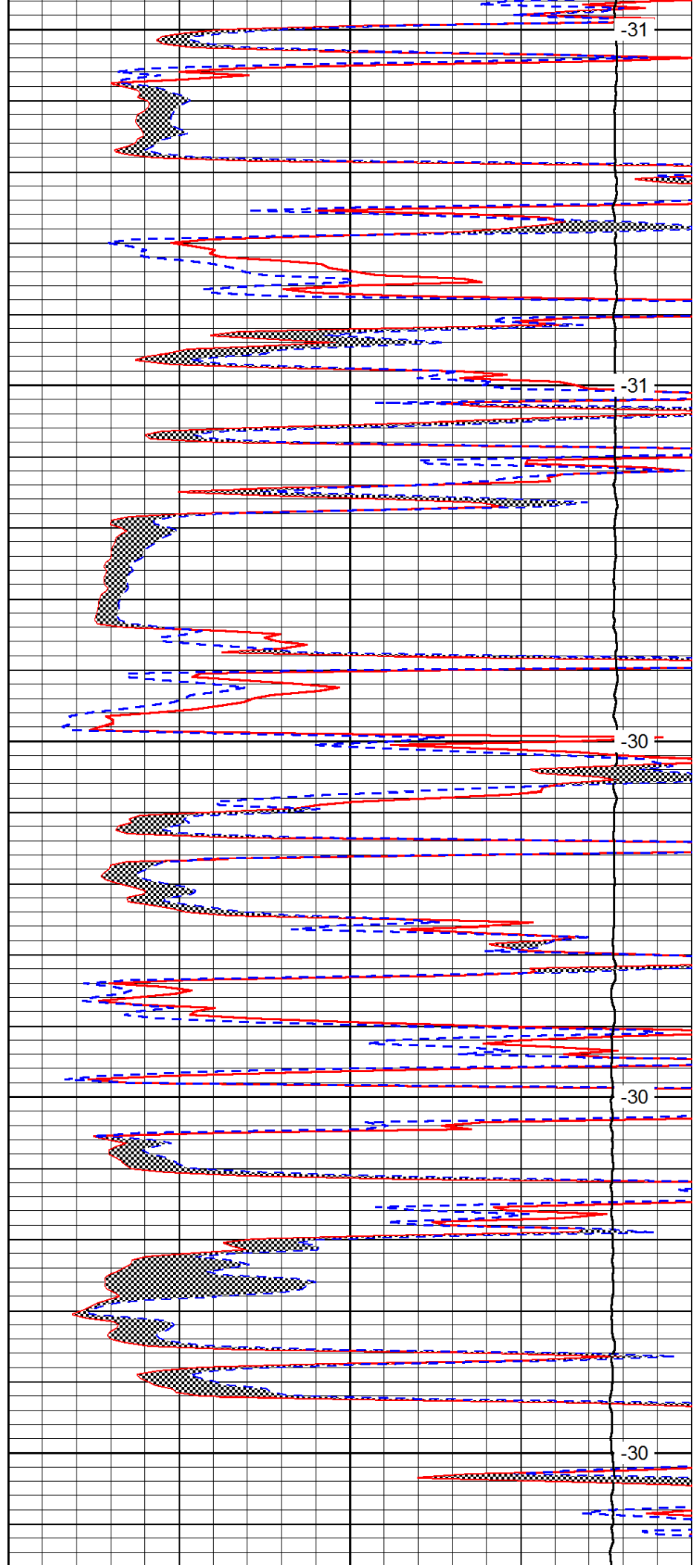
3200

3250

3300

3350

3400



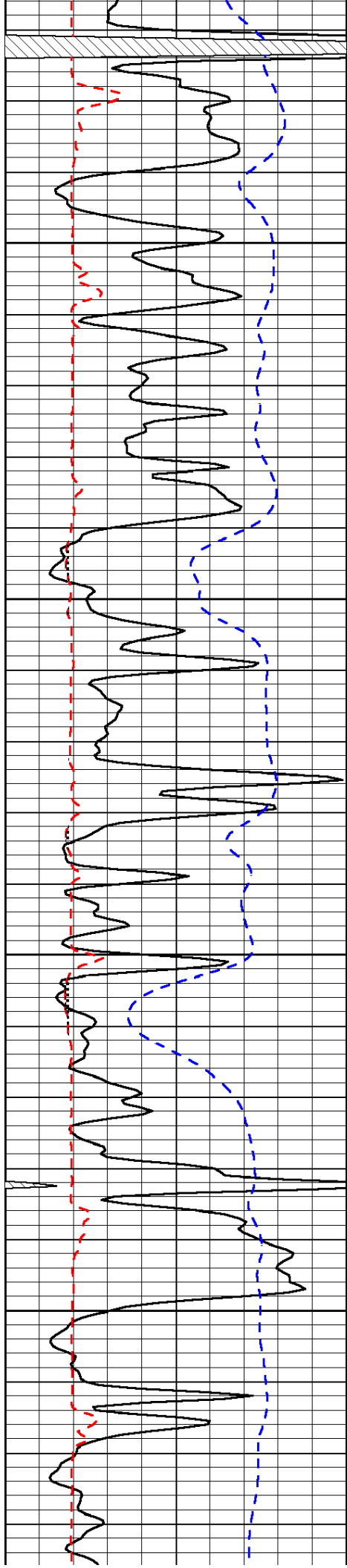
-31

-31

-30

-30

-30

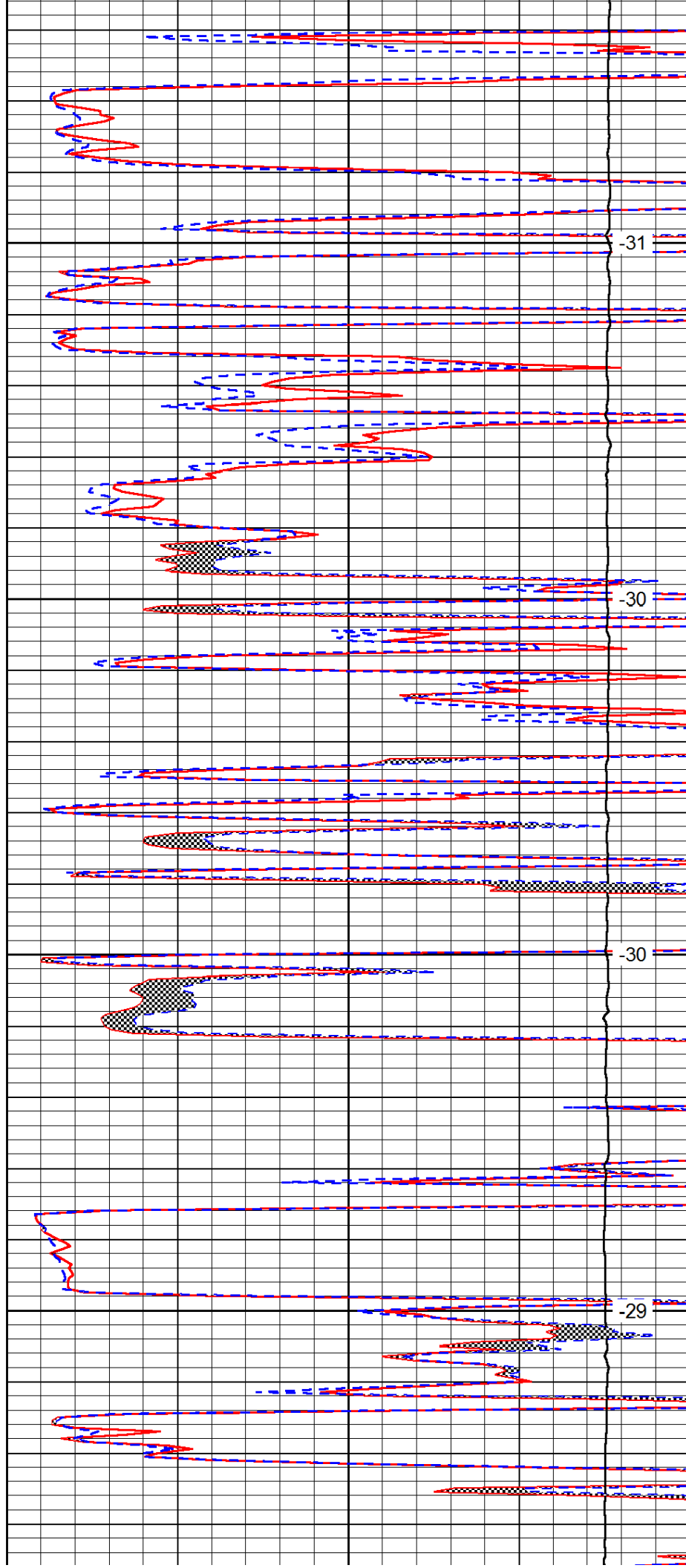


3450

3500

3550

3600

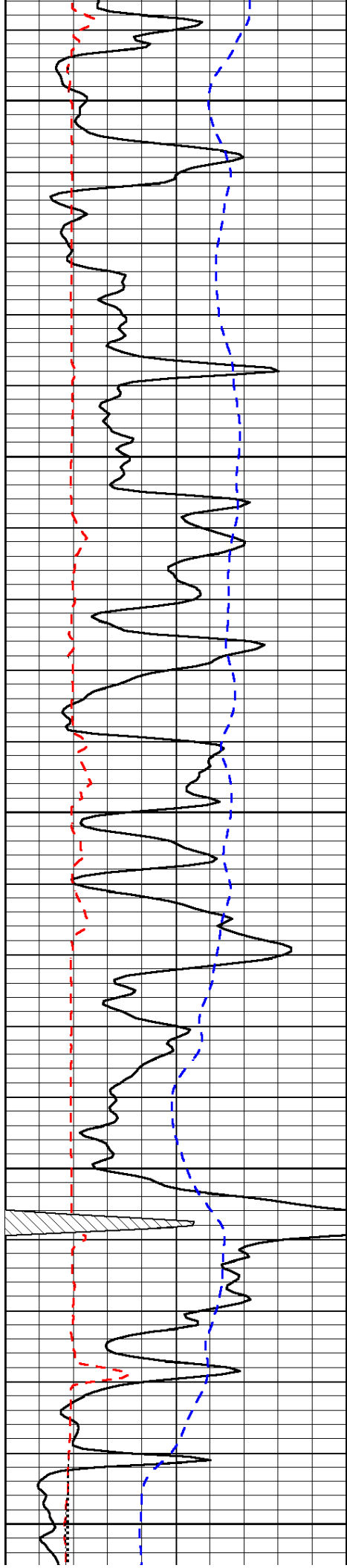


-31

-30

-30

-29



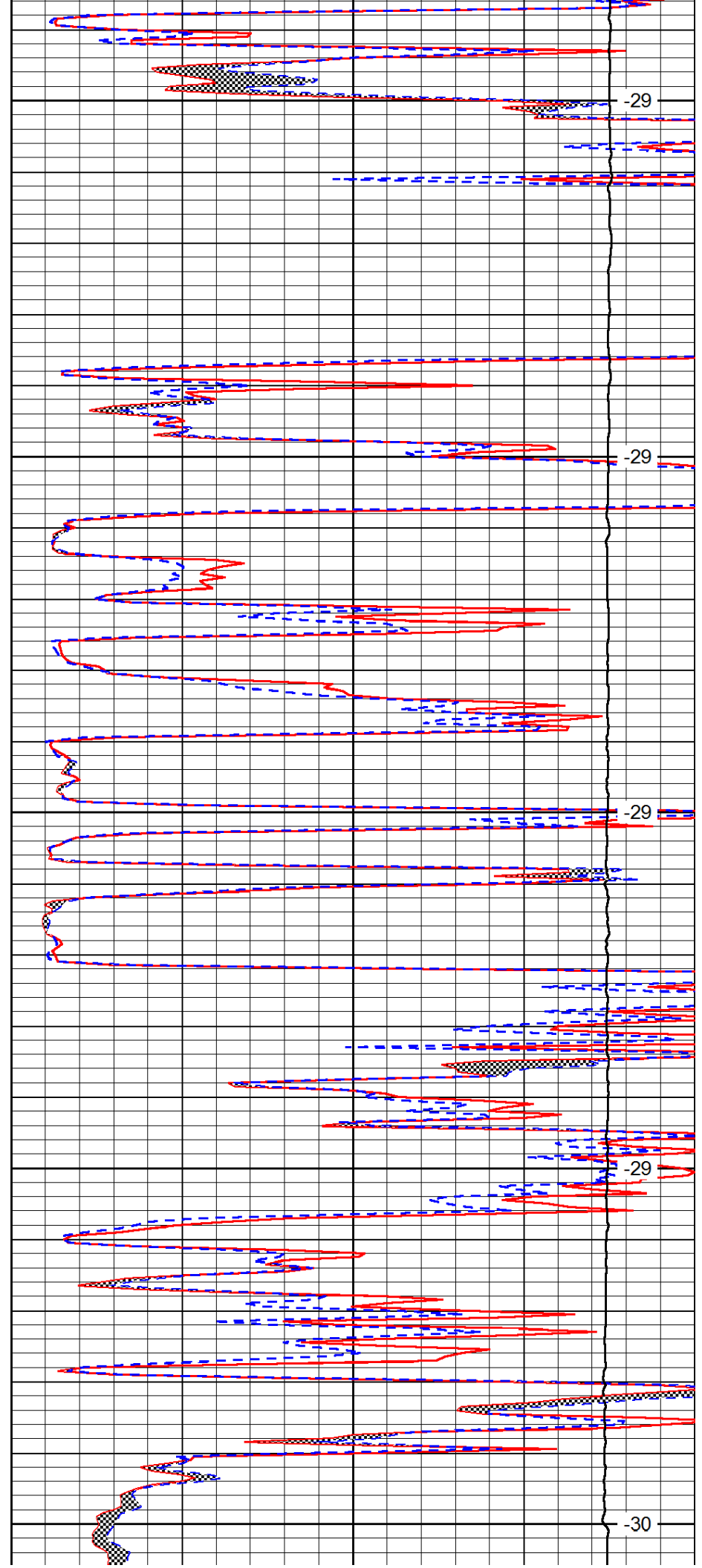
3650

3700

3750

3800

3850



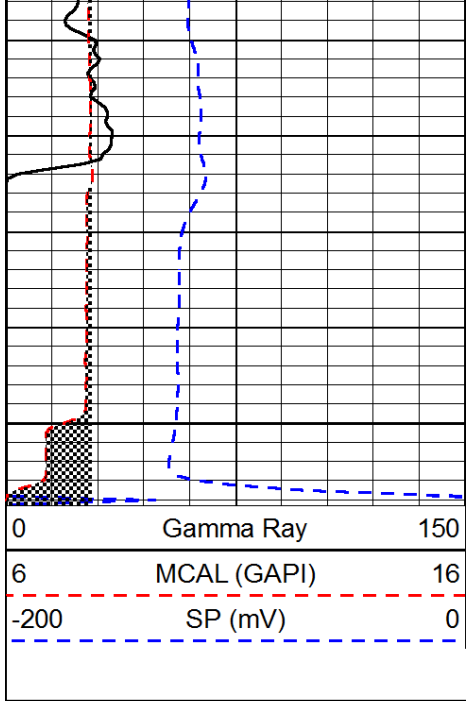
-29

-29

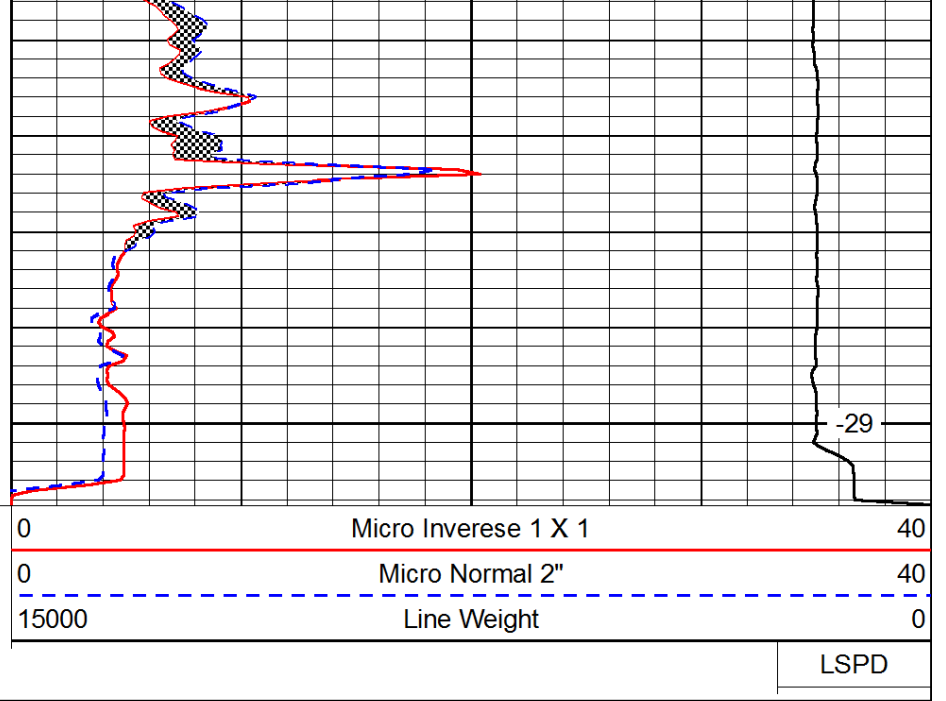
-29

-29

-30



3900



-29

LSPD