



Pioneer Energy Services

Dual Compensated Porosity Log

15-051-26,730-00-00

API No.

Company **Gore Oil Company**
 Well **Kingsley #5**
 Field **Spring Brook**
 County **Ellis** State **Kansas**

Location

2150' FSL & 1100' FEL

Sec: 17

Twp: 14S

Rge: 20W

Other Services
 DIL
 MEL

Elevation

K.B. 2168
 D.F.
 G.I.L. 2162

Permanent Datum

Log Measured From

Drilling Measured From

Ground Level

Kelly Bushing

6 Ft. Above Perm. Datum

Date

Run Number

Type Log

Depth Driller

Depth Logger

Bottom Logged Interval

Top Logged Interval

Type Fluid In Hole

Salinity, PPM CL

Density

Level

Max. Rec. Temp. F

Operating Rig Time

Equipment -- Location

Recorded By

Witnessed By

Borehole Record

Run No

Bit

From

To

Size

Wgt.

24#

From

To

00

266

266

3900

8.625

7.875

266

266

3900

8.625

7.875

266

266

3900

8.625

7.875

266

266

3900

8.625

7.875

266

266

3900

8.625

7.875

266

266

3900

8.625

7.875

266

266

3900

8.625

7.875

266

266

3900

8.625

7.875

266

266

3900

8.625

7.875

266

266

3900

8.625

7.875

266

266

3900

8.625

7.875

266

266

3900

8.625

7.875

266

266

3900

8.625

7.875

266

266

3900

8.625

7.875

266

266

3900

8.625

7.875

266

266

3900

8.625

7.875

266

266

3900

8.625

7.875

266

266

3900

8.625

7.875

266

266

3900

8.625

7.875

266

266

3900

8.625

7.875

266

266

3900

8.625

7.875

266

266

3900

8.625

7.875

266

266

3900

8.625

7.875

266

266

3900

8.625

7.875

266

266

3900

8.625

7.875

266

266

3900

8.625

7.875

266

266

3900

8.625

7.875

266

266

3900

8.625

7.875

266

266

3900

8.625

7.875

266

266

3900

8.625

7.875

266

266

3900

8.625

7.875

266

266

3900

8.625

7.875

266

266

3900

8.625

7.875

266

266

3900

8.625

7.875

266

266

3900

8.625

7.875

266

266

3900

8.625

7.875

266

266

3900

8.625

7.875

266

266

3900

8.625

7.875

266

266

3900

8.625

7.875

266

266

3900

8.625

7.875

266

266

3900

8.625

7.875

266

266

3900

8.625

7.875

266

266

3900

8.625

7.875

266

266

3900

8.625

7.875

266

266

3900

8.625

7.875

266

266

3900

8.625

7.875

266

266

3900

8.625

7.875

266

266

3900

8.625

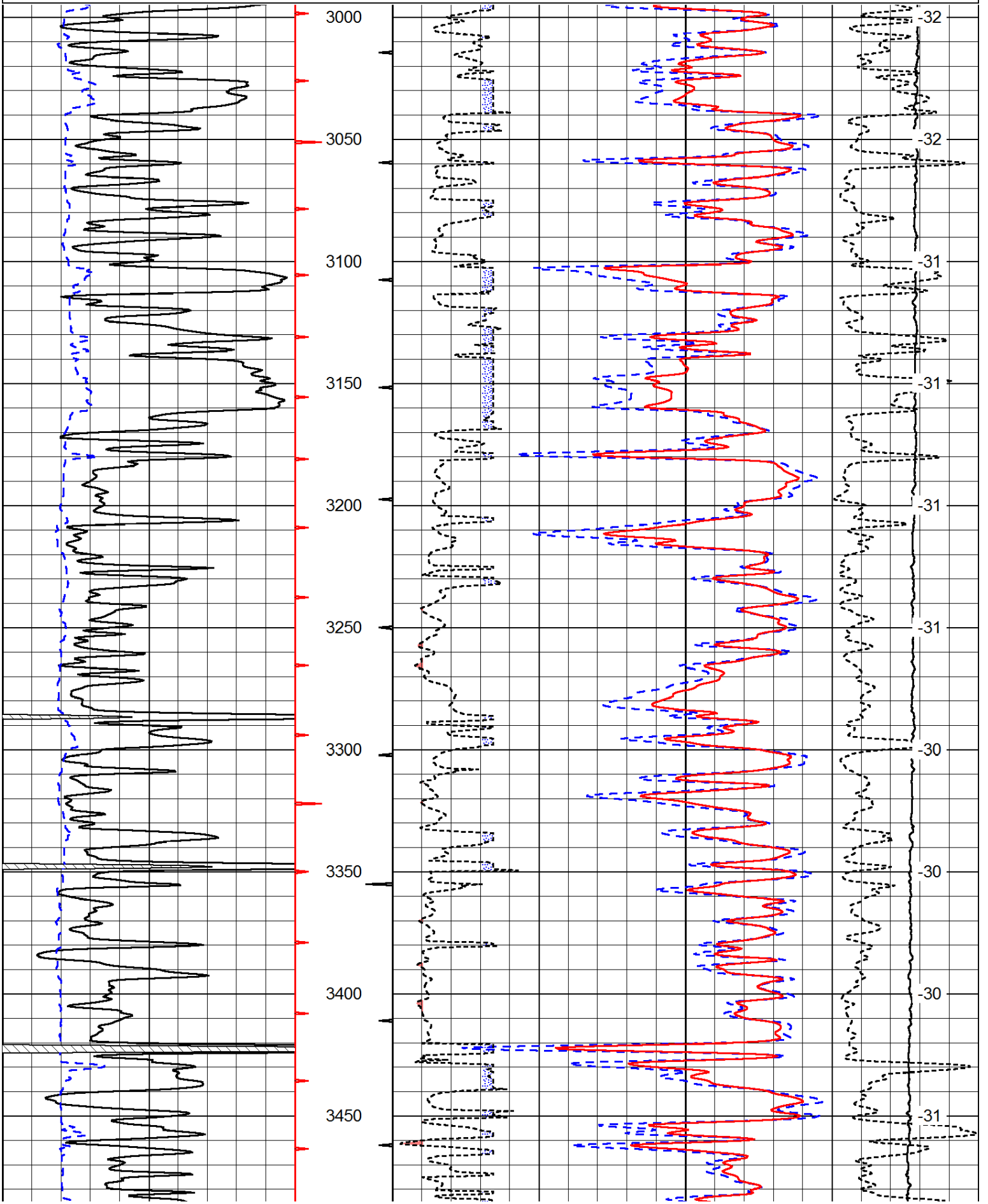
7.875

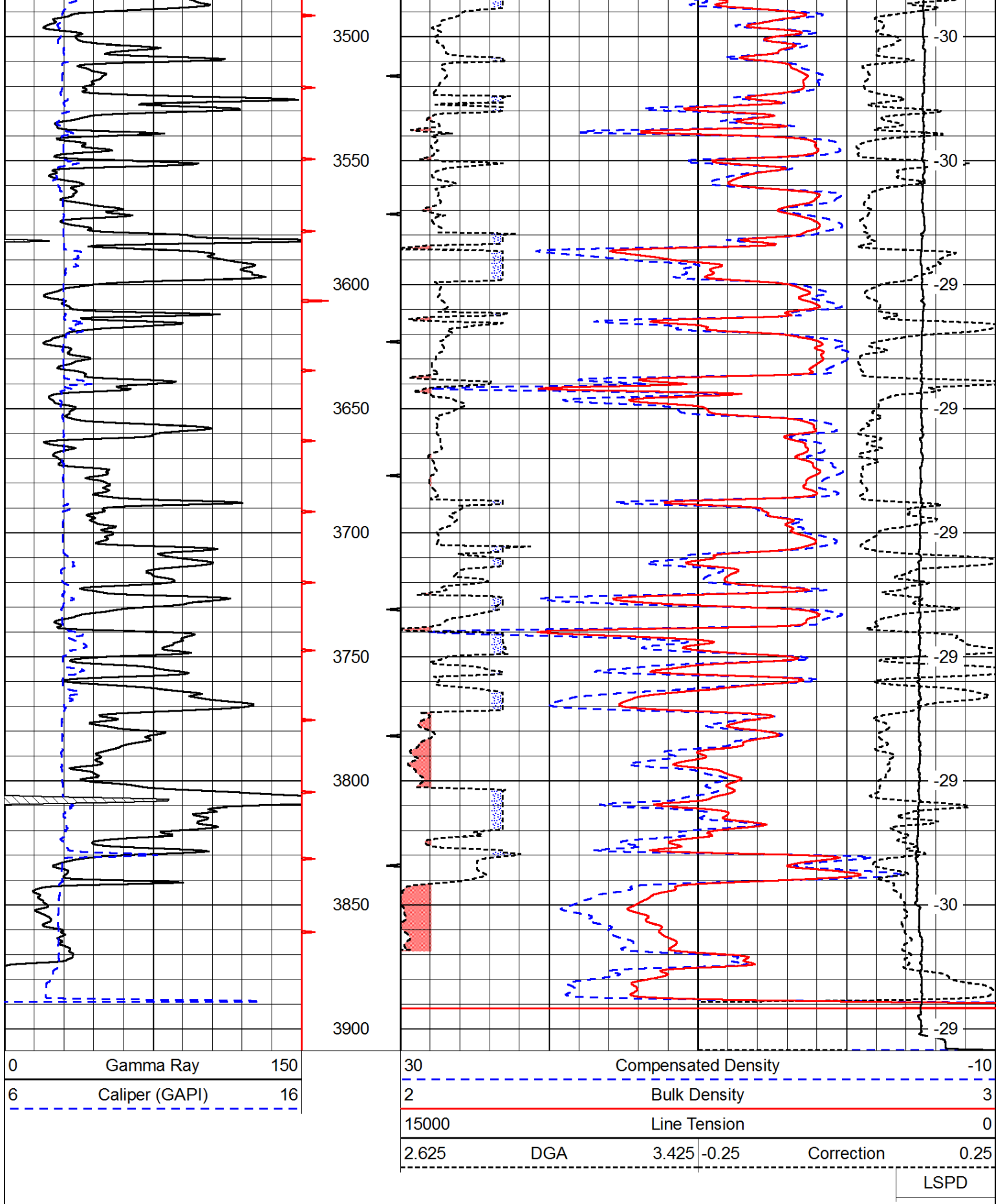
266

266

0	Gamma Ray	150
6	Caliper (GAPI)	16

30	Compensated Density		-10
2	Bulk Density		3
15000	Line Tension		0
2.625	DGA	3.425	-0.25
Correction			0.25





Database File: c:\warrior\data\gore_kingsley #5\gorehd.db
 Dataset Pathname: dil/gorestk
 Presentation Format: cndlspec
 Dataset Creation: Wed Oct 29 08:24:43 2014
 Charted by: Depth in Feet scaled 1:240

