



**COMPLETION
& PRODUCTION
SERVICES CO.**

**COMPENSATED
DENSITY / NEUTRON
LOG**

Company PROLIFIC RESOURCES LLC.
Well FROETSCHNER #1
Field WILDCAT
County PAWNEE State KANSAS

Company PROLIFIC RESOURCES LLC.
Well FROETSCHNER #1
Field WILDCAT
County PAWNEE
State KANSAS

Location: API #: 15-145-21788-00-00
330 FNL & 2310 FEL
NW - NW - NE
SEC 11 TWP 22S RGE 18W
Permanent Datum GROUND LEVEL Elevation 2041
Log Measured From KELLY BUSHING 5' A.G.L.
Drilling Measured From KELLY BUSHING
Other Services
DILMEL
SONIC
Elevation
K.B. 2046
D.F. 2044
G.L. 2041

Date	9/24/14		
Run Number	ONE		
Depth Driller	4343		
Depth Logger	4341		
Bottom Logged Interval	4317		
Top Log Interval	998		
Casing Driller	8 5/8 @ 1111'		
Casing Logger	1114'		
Bit Size	7.875		
Type Fluid in Hole	CHEMICAL MUD		
Density / Viscosity	9.249		
pH / Fluid Loss	10.0/8.4		
Source of Sample	FLOWLINE		
Rim @ Meas. Temp	0.65 @ 91F		
Rmf @ Meas. Temp	0.49 @ 91F		
Rmc @ Meas. Temp	0.78 @ 91F		
Source of Rmf / Rmc	MEASURED		
Rim @ BHT	0.50 @ 119F		
Time Circulation Stopped	2 HOURS		
Time Logger on Bottom			
Maximum Recorded Temperature	119F		
Equipment Number	3802		
Location	HAYS, KS.		
Recorded By	IAN MABB		
Witnessed By	BOB STOLZLE		

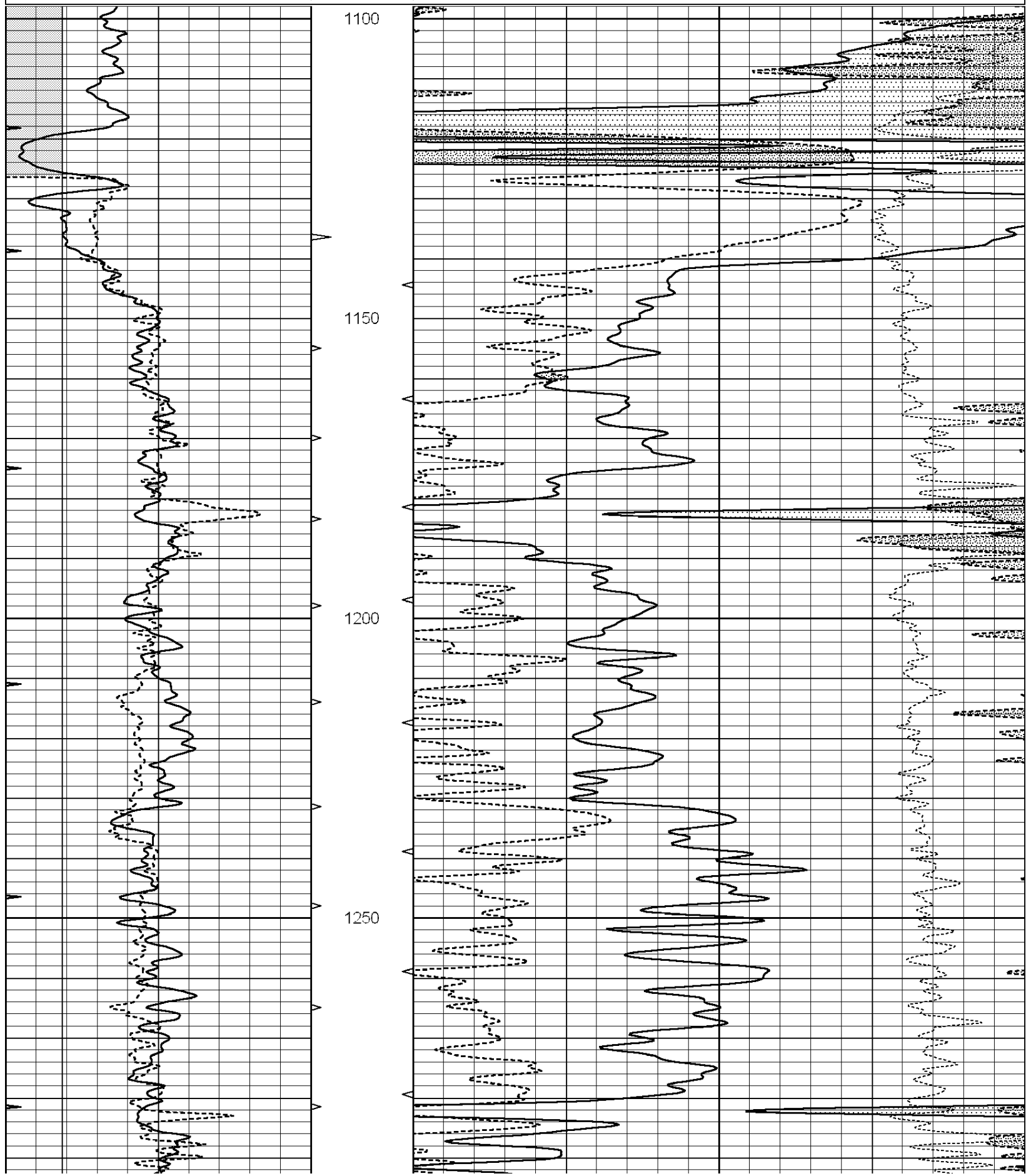
<<< Fold Here >>>

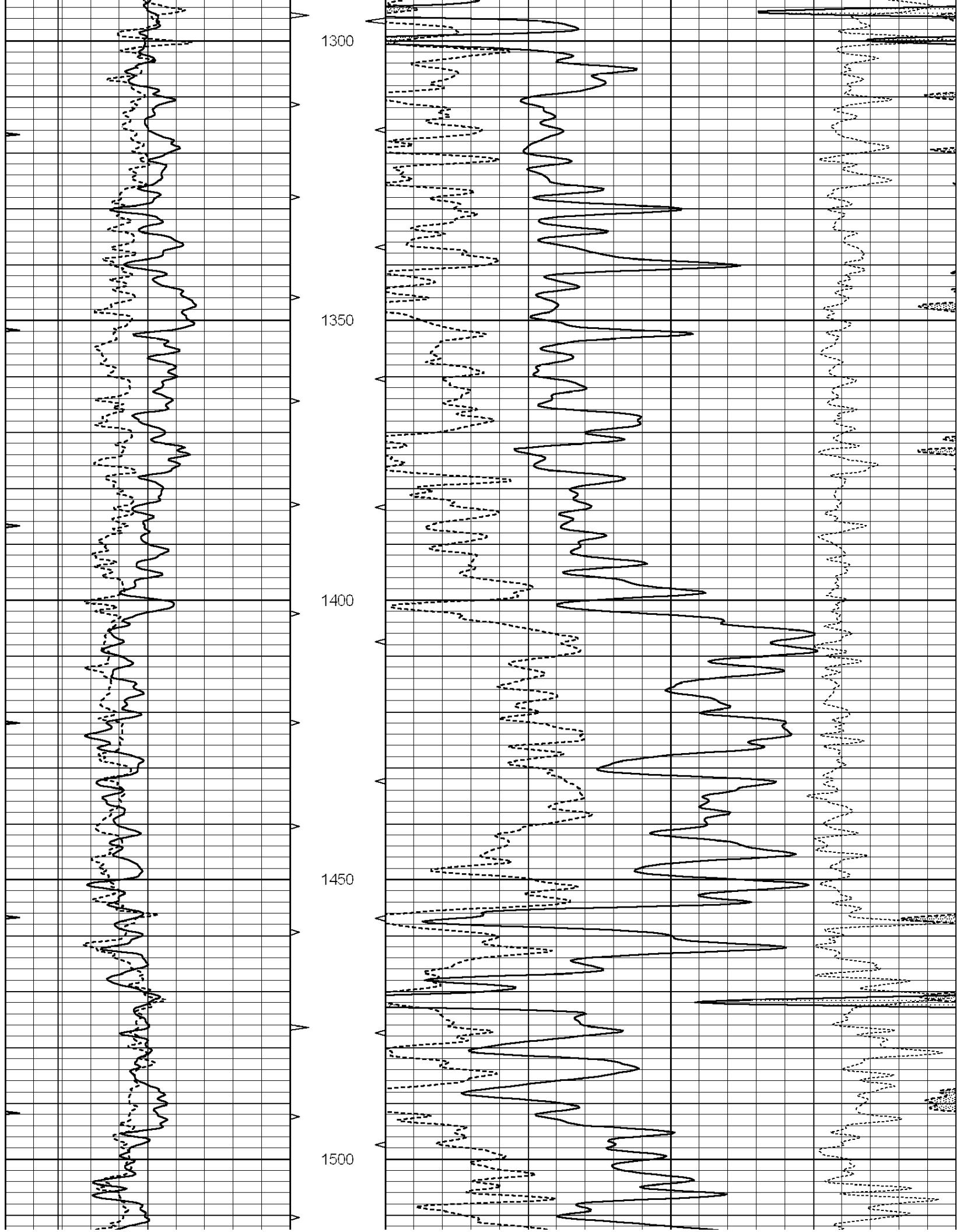
All interpretations are opinions based on inferences from electrical or other measurements and we cannot and do not guarantee the accuracy or correctness of any interpretation, and we shall not, except in the case of gross or willful negligence on our part, be liable or responsible for any loss, costs, damages, or expenses incurred or sustained by anyone resulting from any interpretation made by any of our officers, agents or employees. These interpretations are also subject to our general terms and conditions set out in our current Price Schedule.

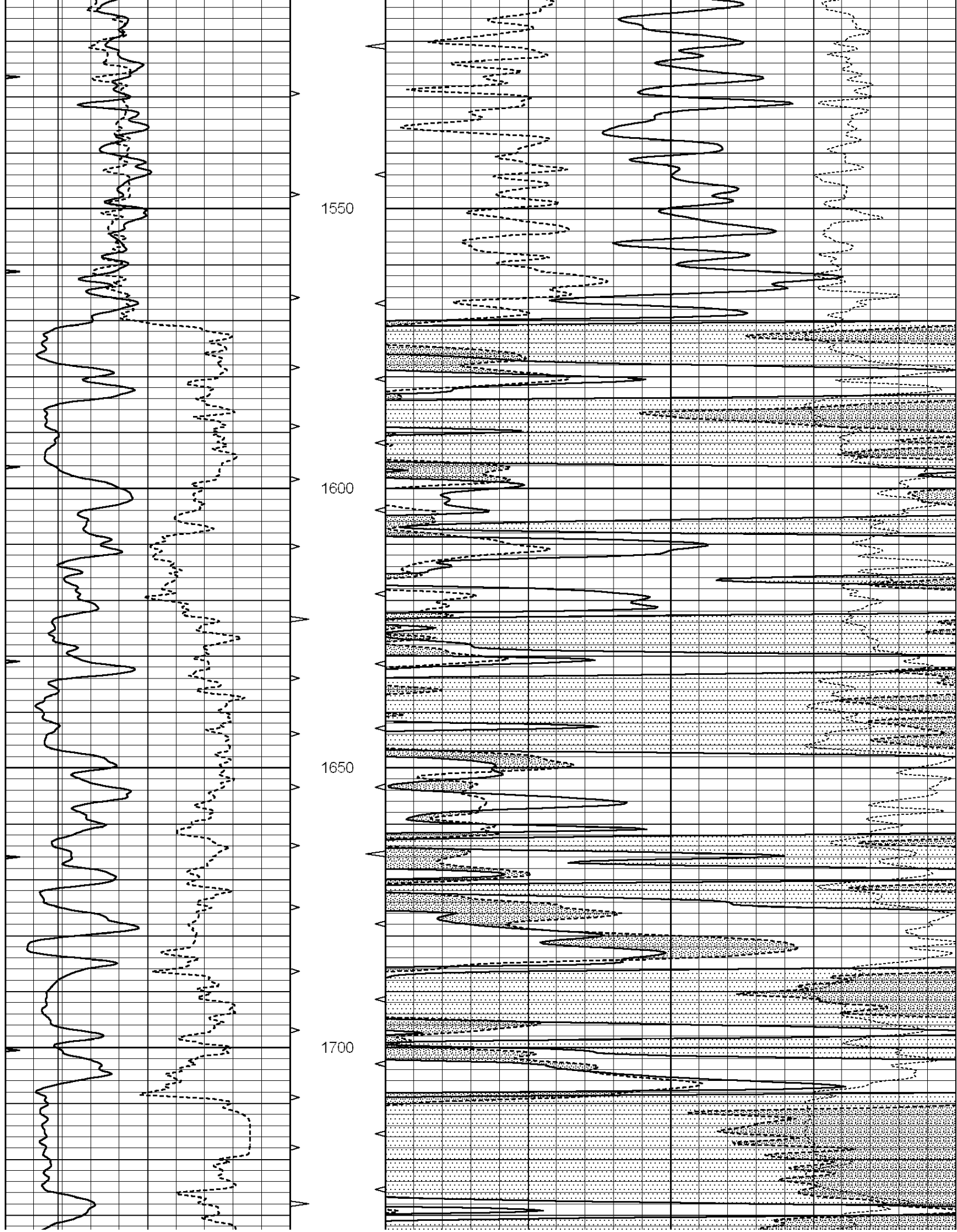
Comments

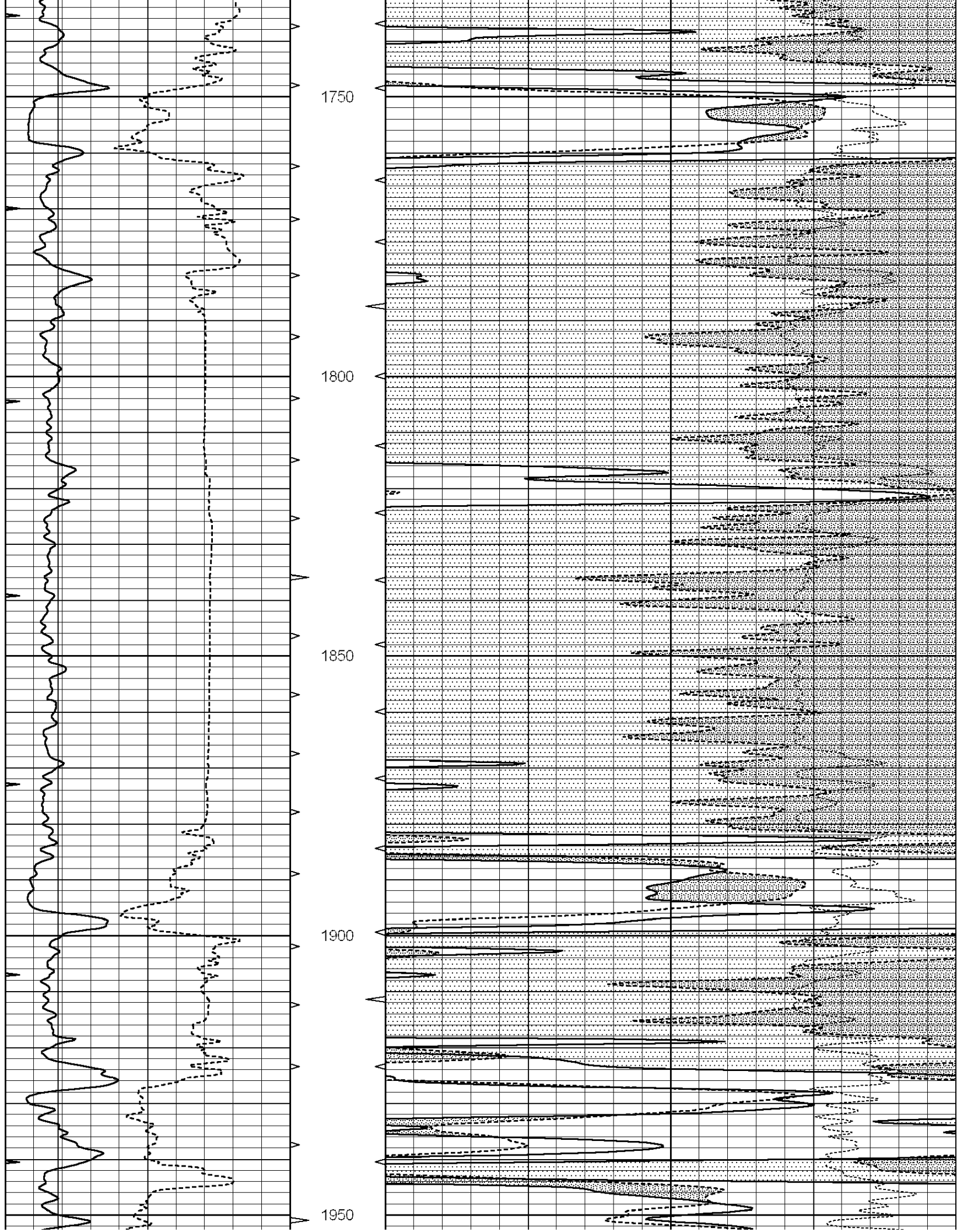
NABORS COMPLETION & PRODUCTION SERVICES CO.
785 (628 - 6395)
THANK YOU FOR YOUR BUSINESS
DIRECTIONS : HWY 183 & 156 - 2 MILES SOUTH TO RD L - EAST 2 1/2 MILES SOUTH INTO

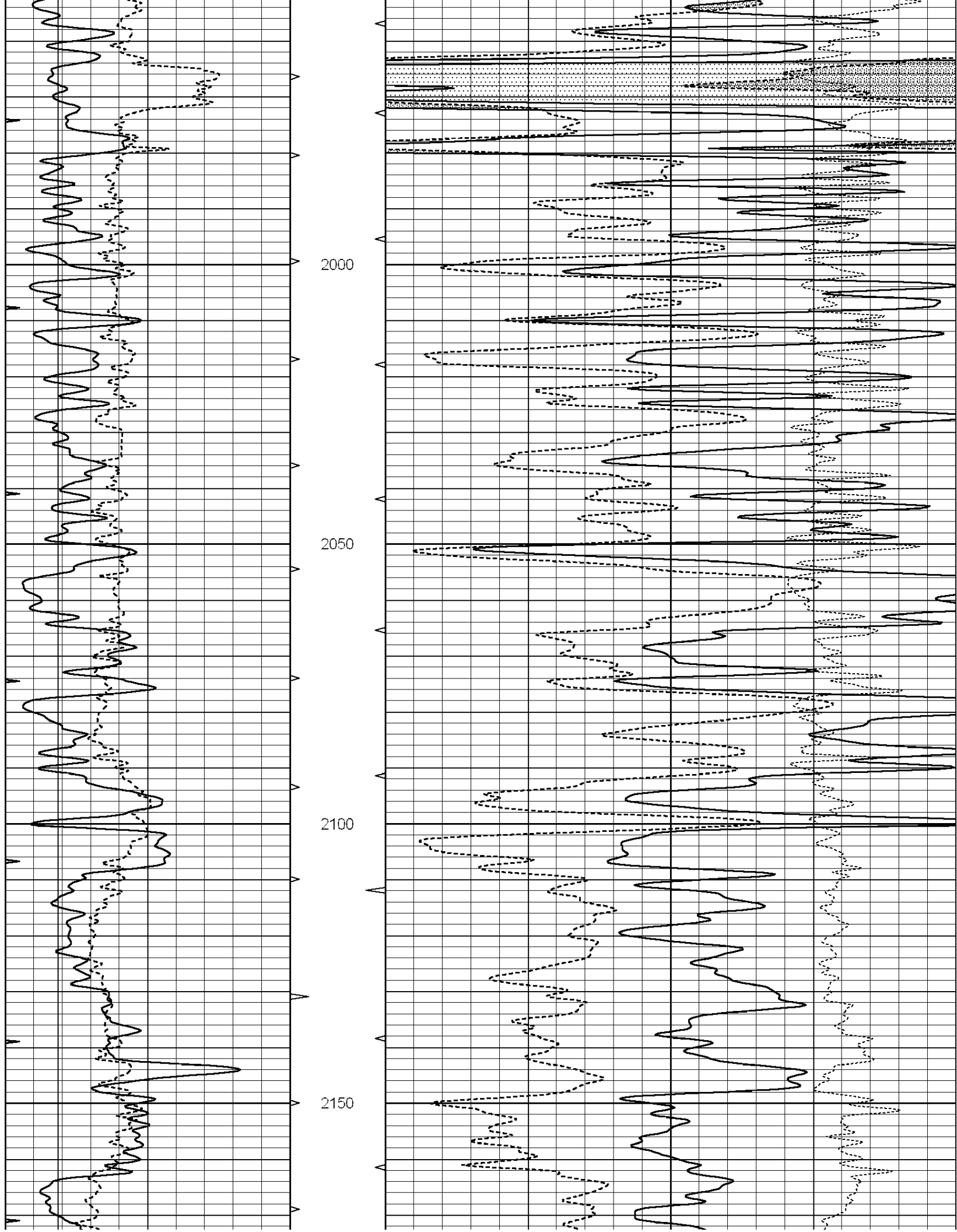
0	GAMMA RAY (GAPI)	150	AVTX	30	COMPENSATED DENSITY (pu)	-10
6	CALIPER (in)	16	10 (ft3)	0 30	COMPENSATED NEUTRON (pu)	-10
0	MINMK	20	BVTX		-0.25 CORRECTION (g/cc)	0.25
			0 (ft3)	10		

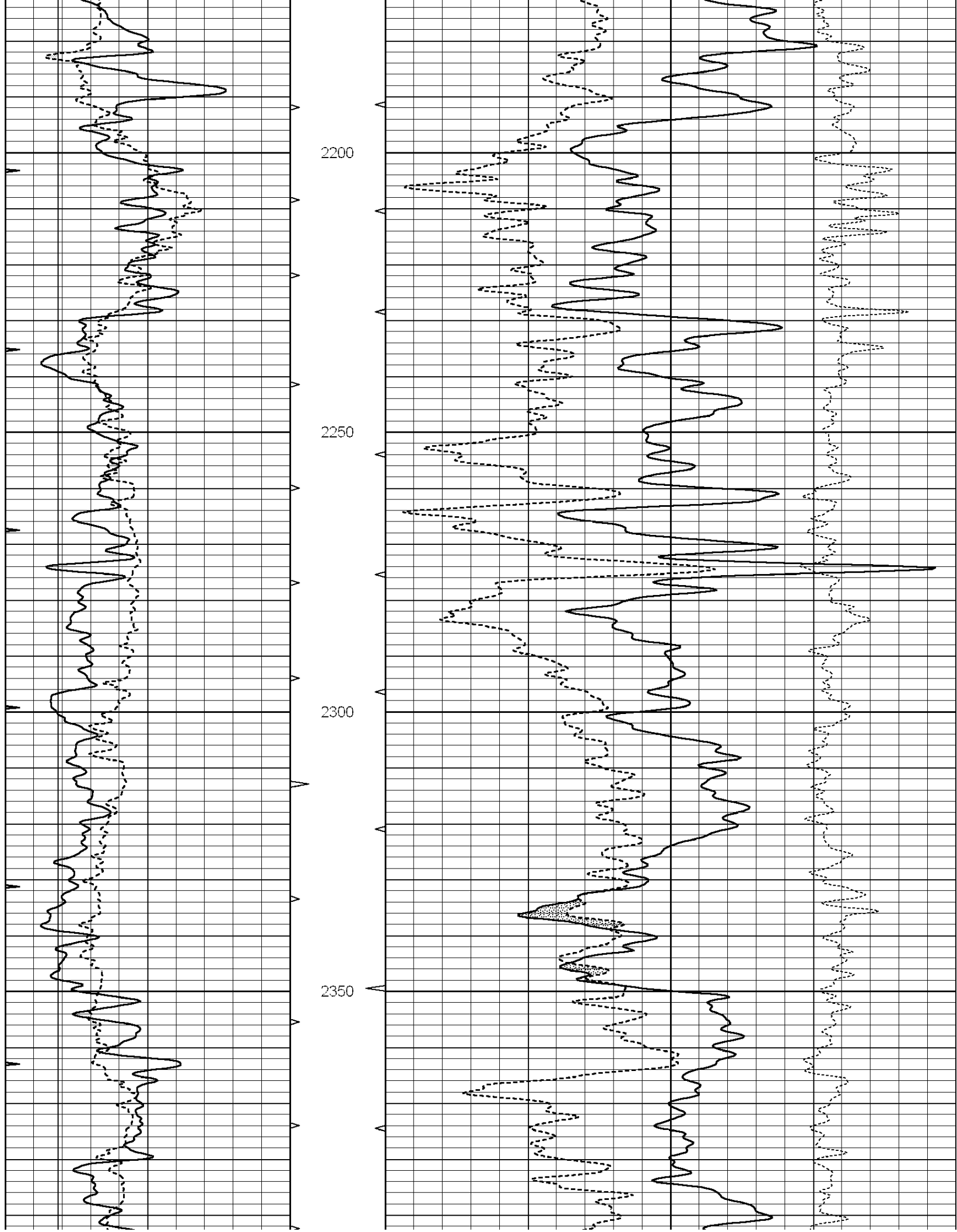


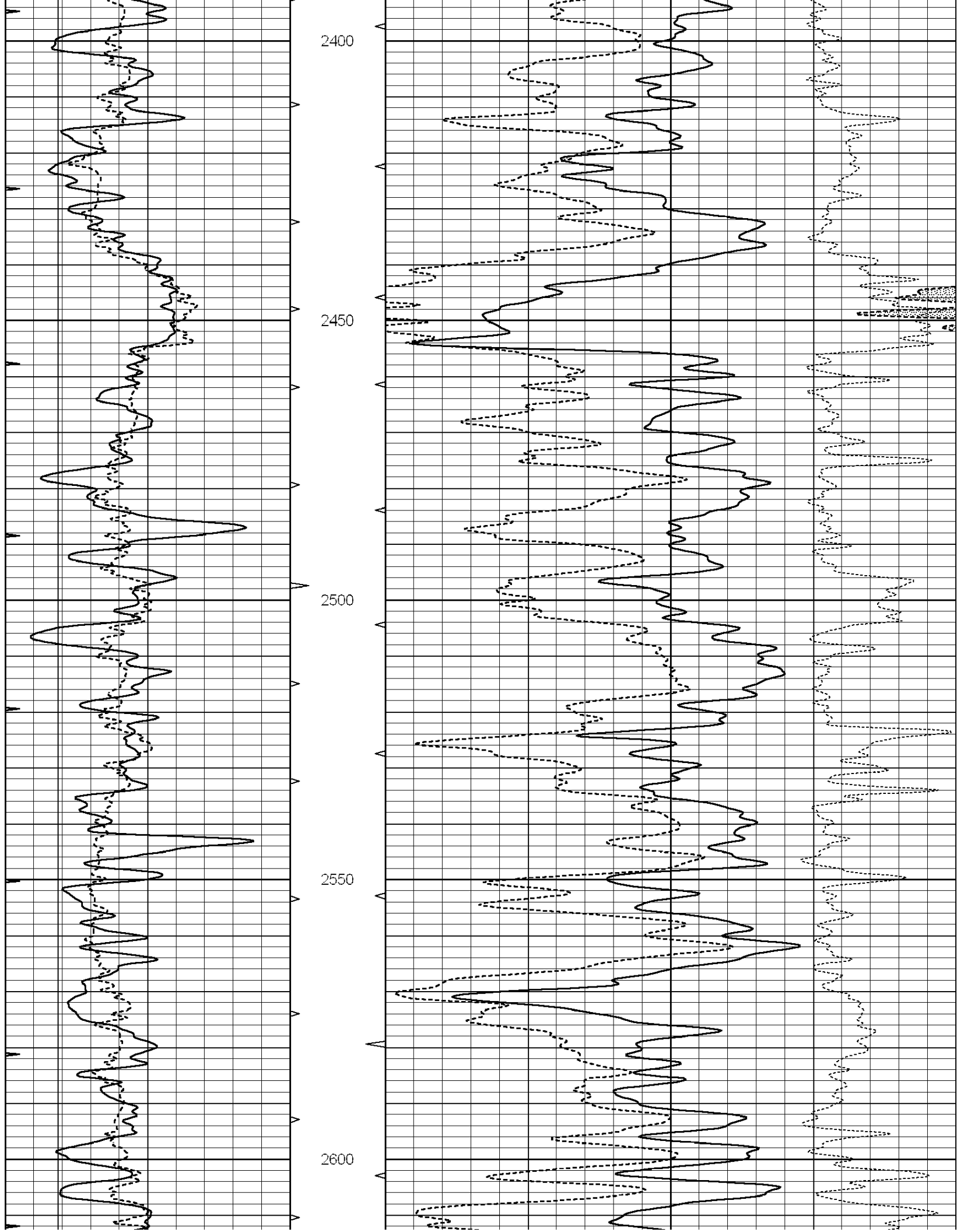


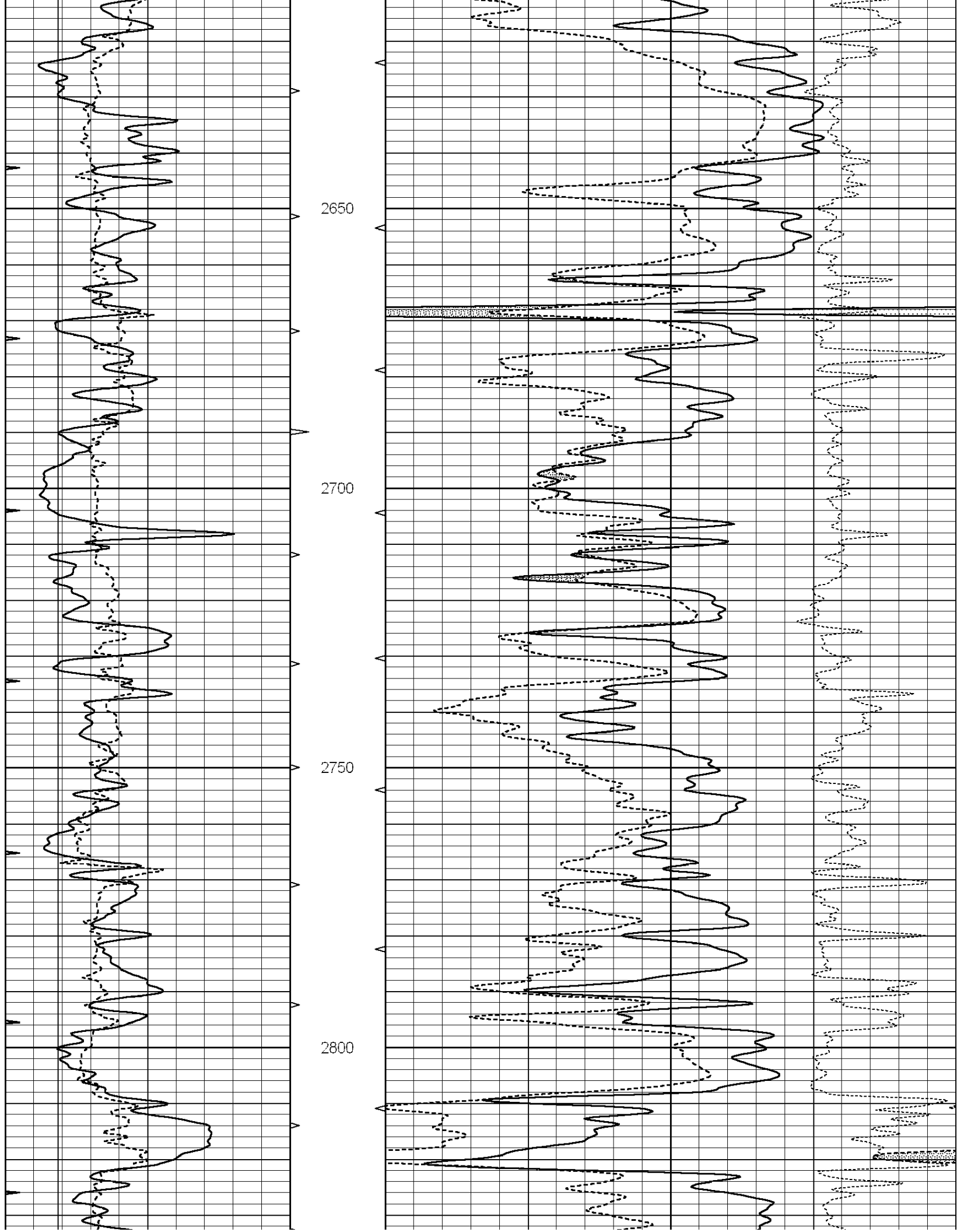


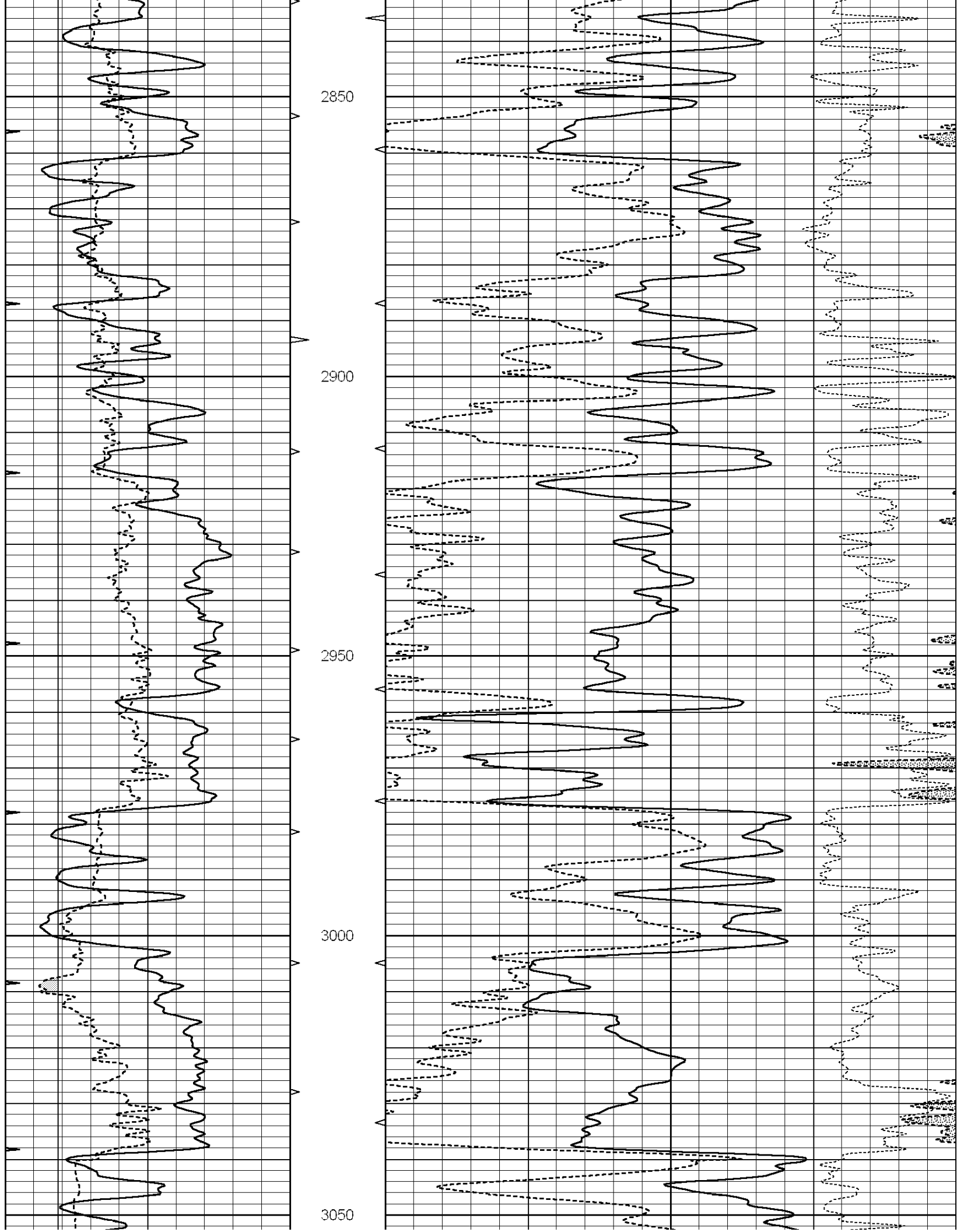


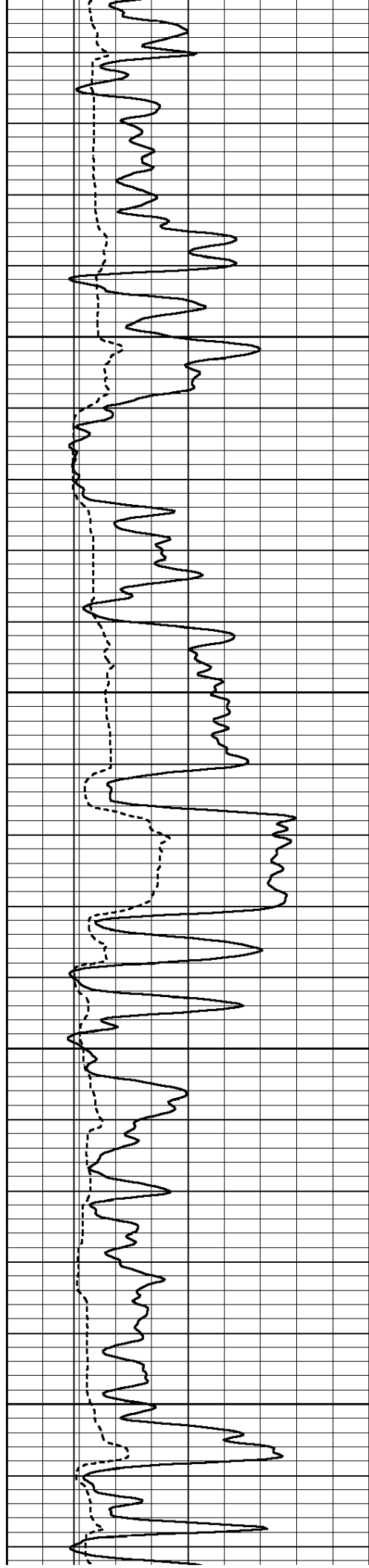










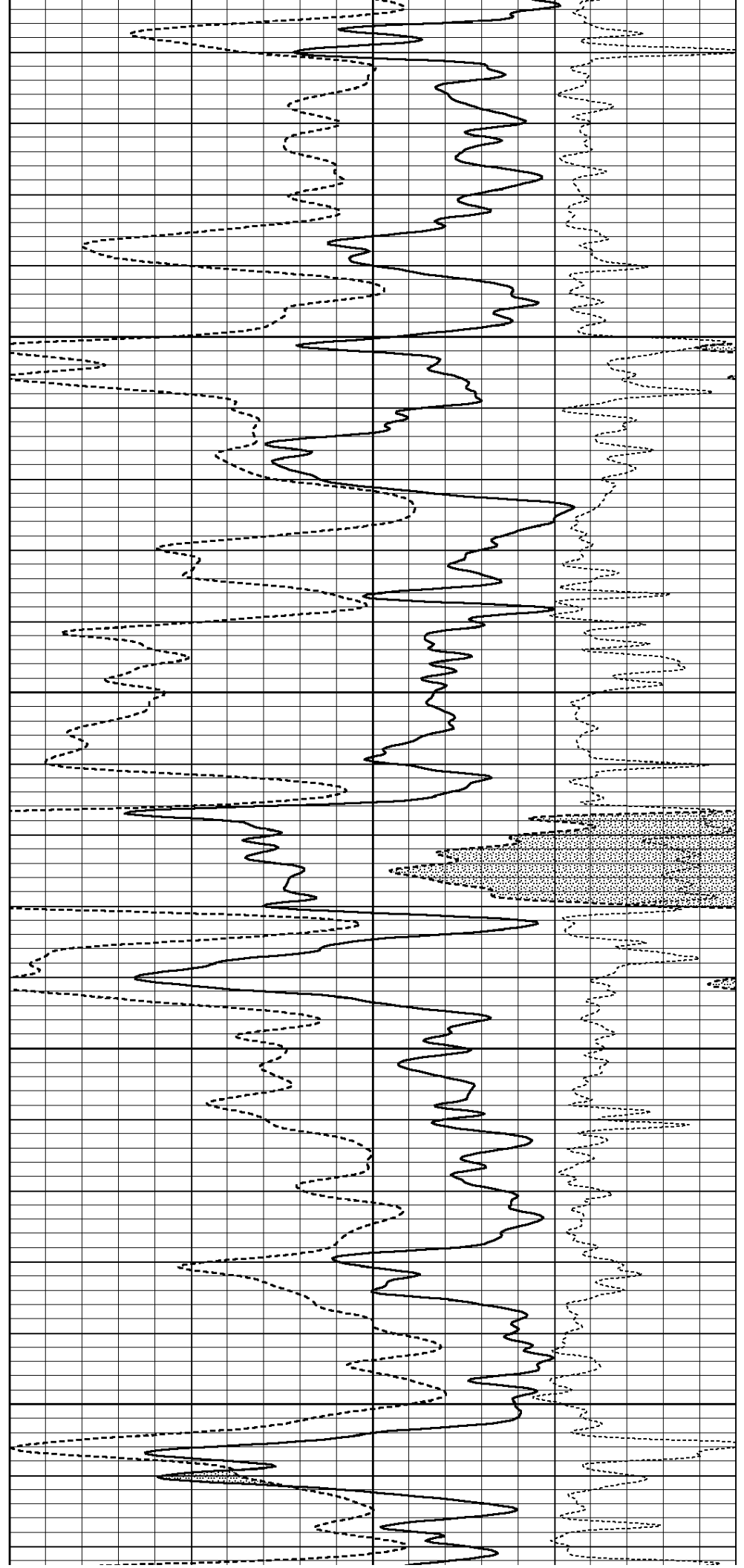


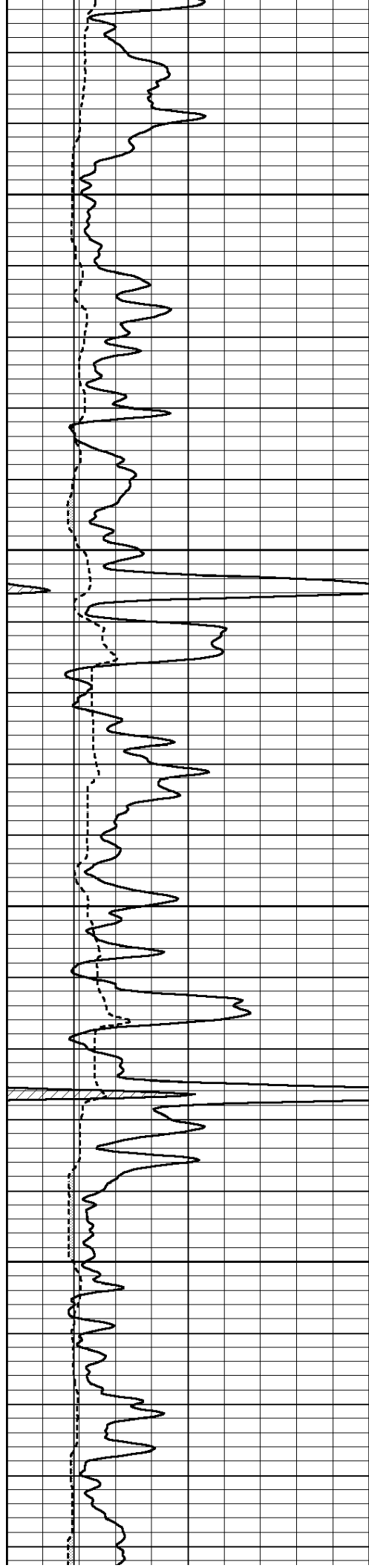
3100

3150

3200

3250



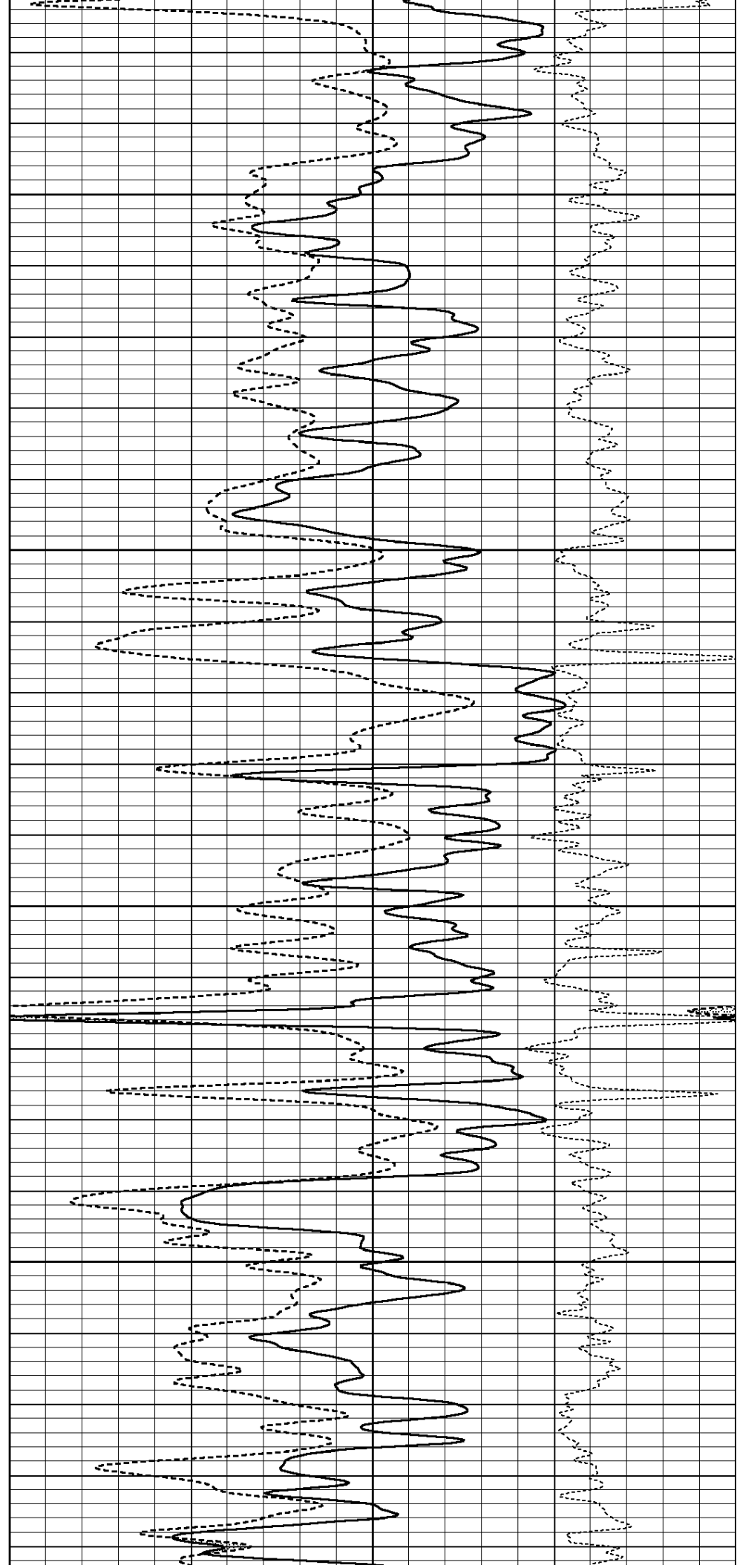


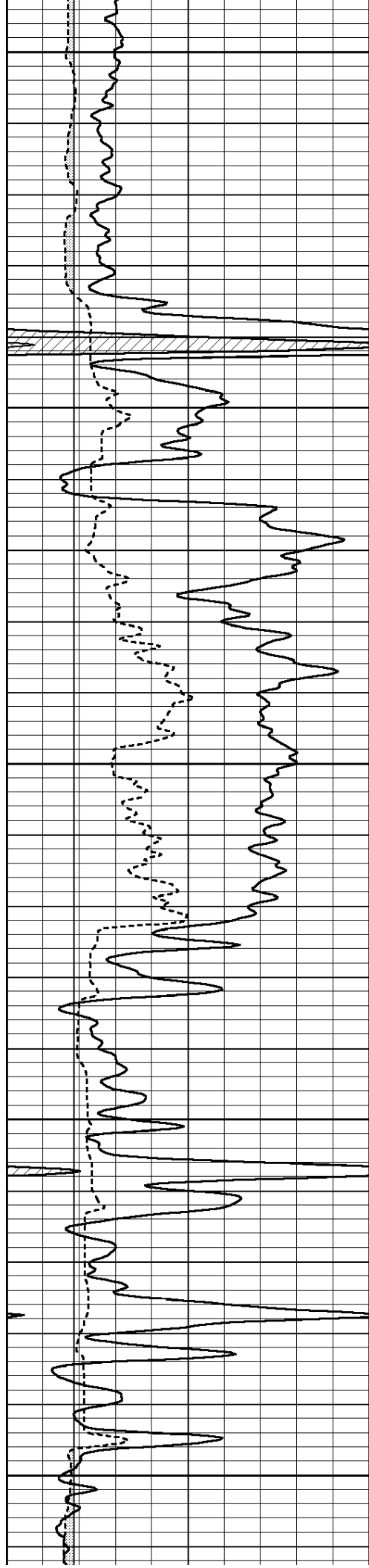
3300

3350

3400

3450





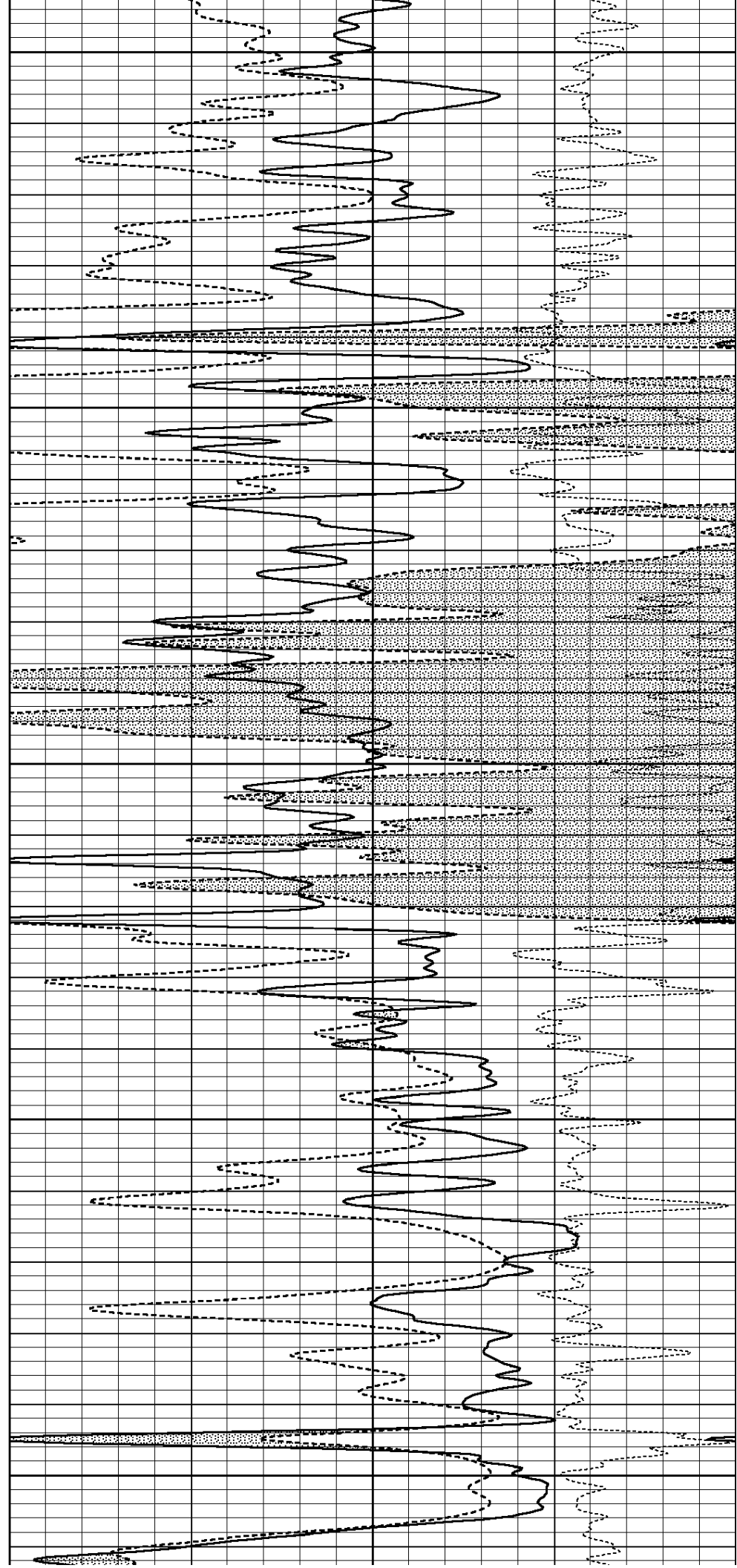
3500

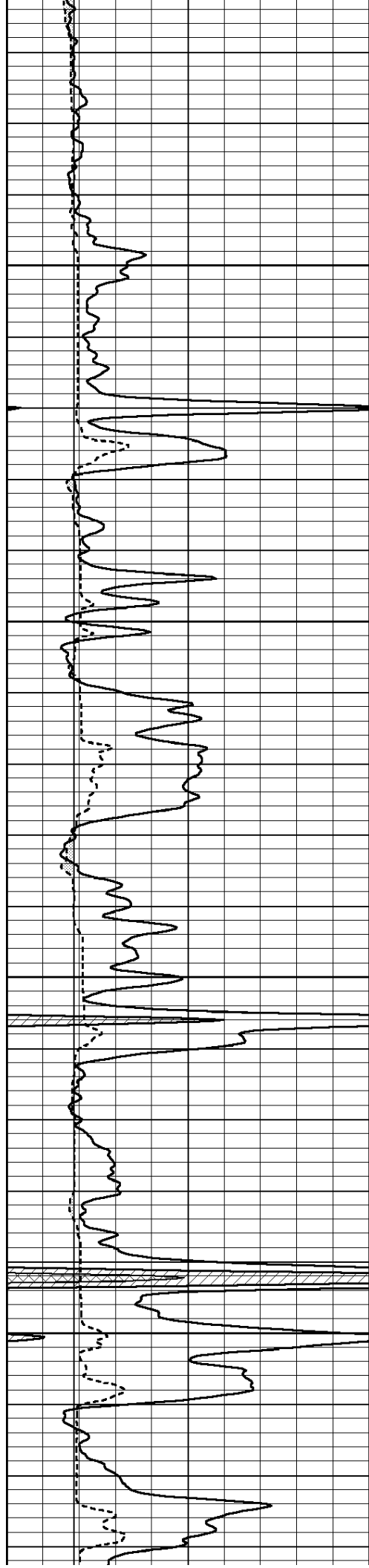
3550

3600

3650

3700



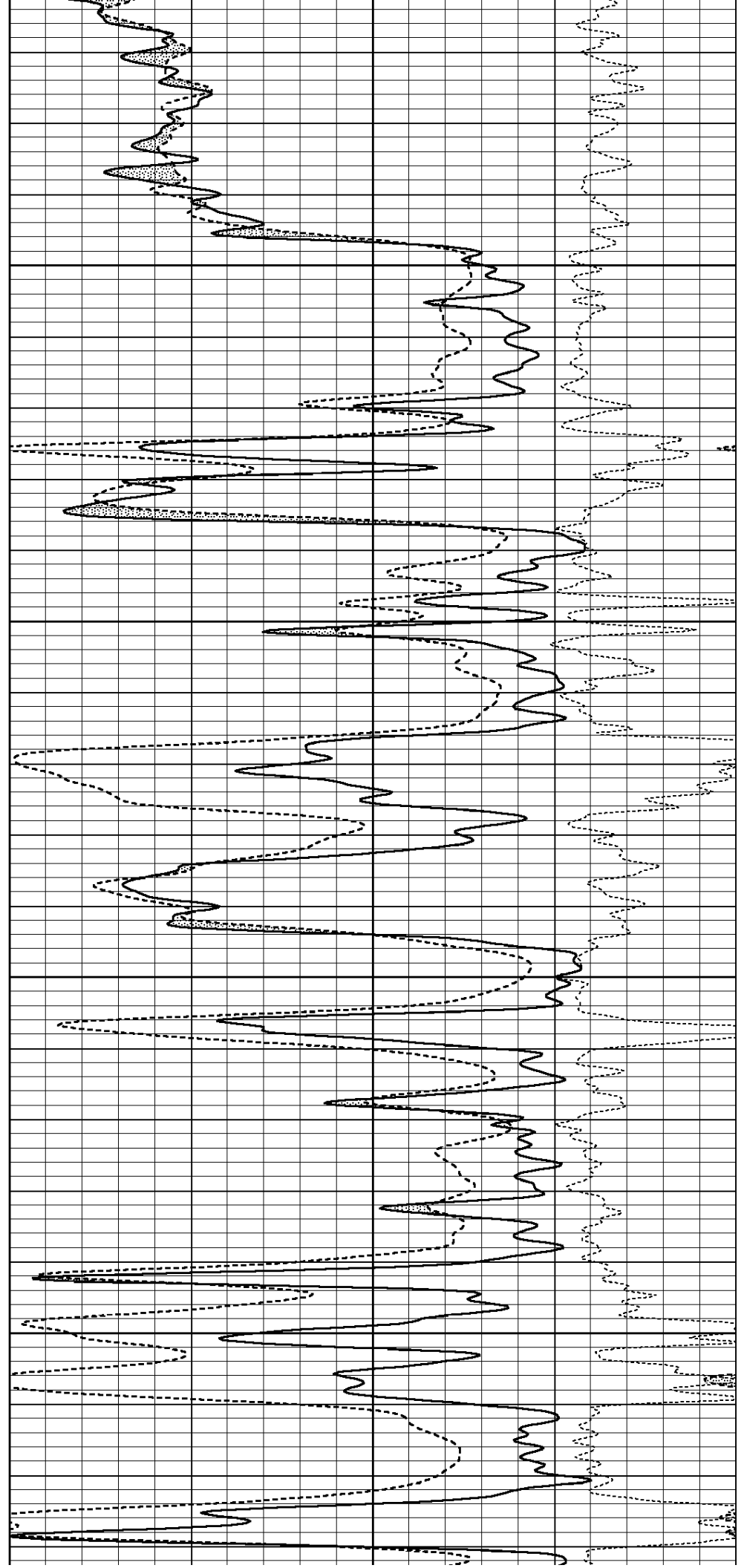


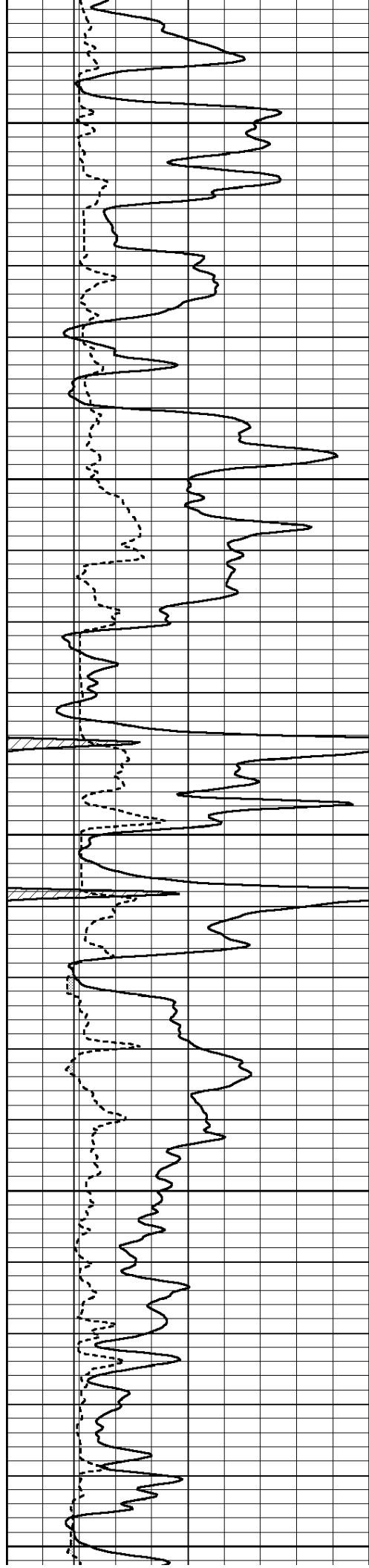
3750

3800

3850

3900





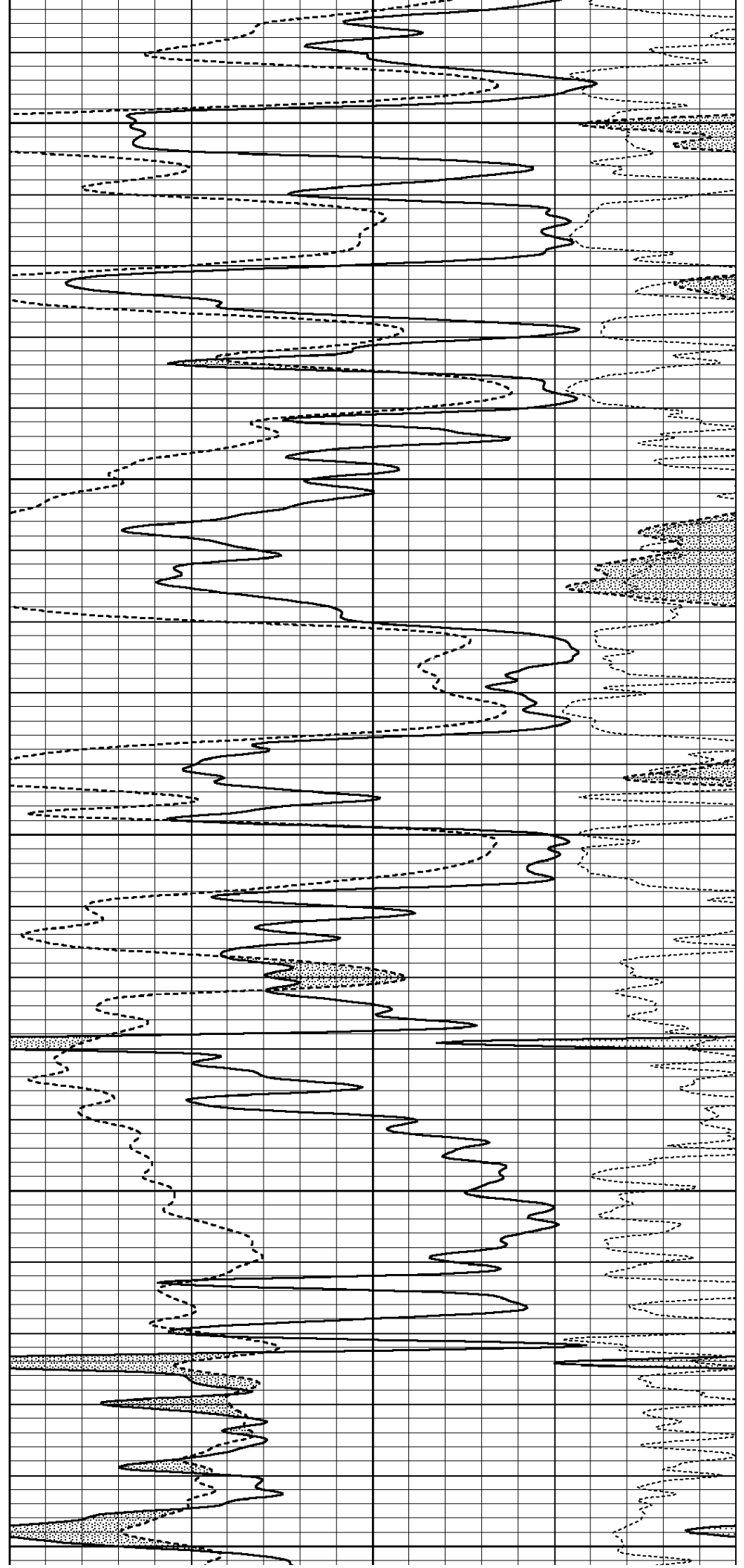
3950

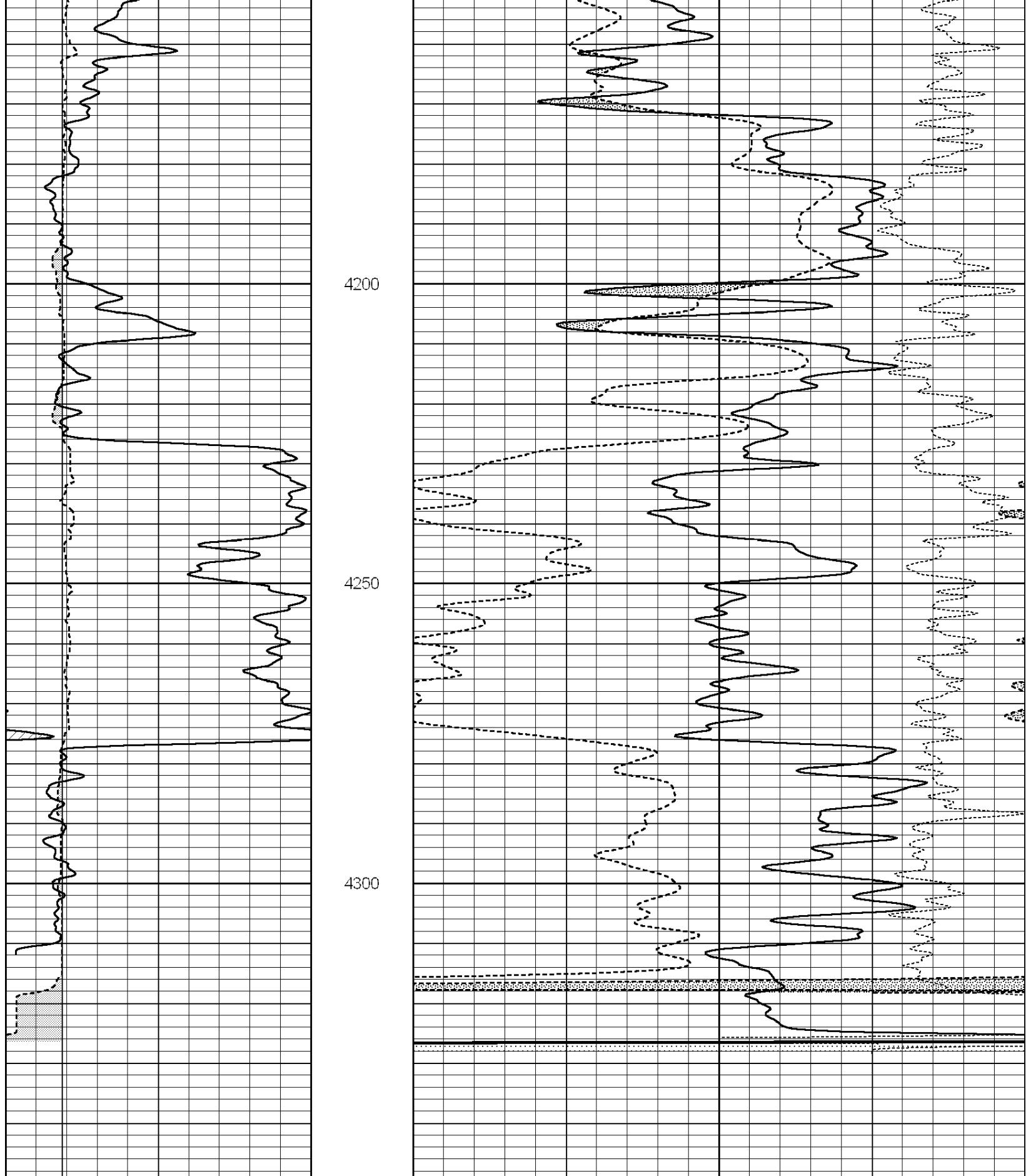
4000

4050

4100

4150



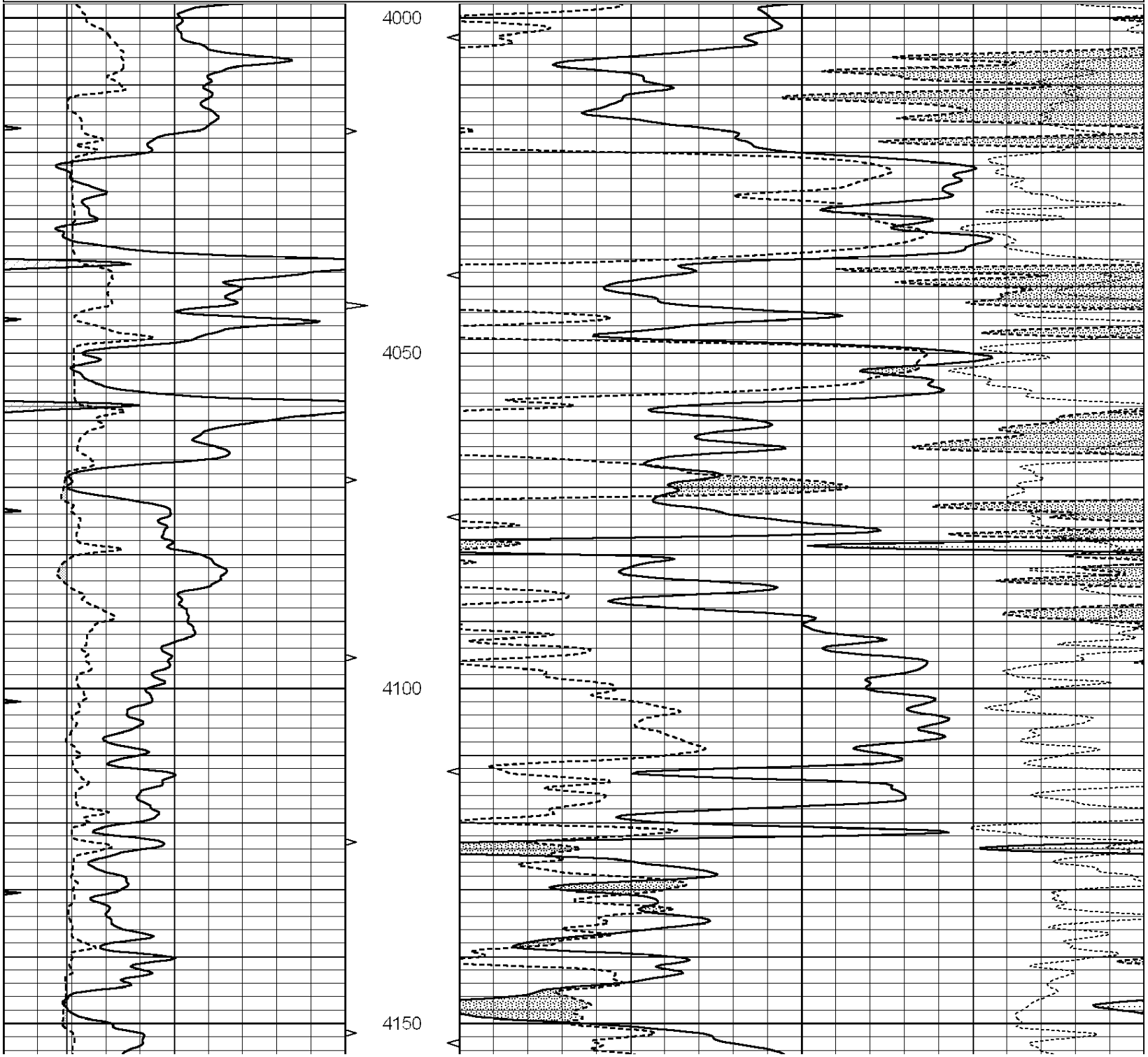


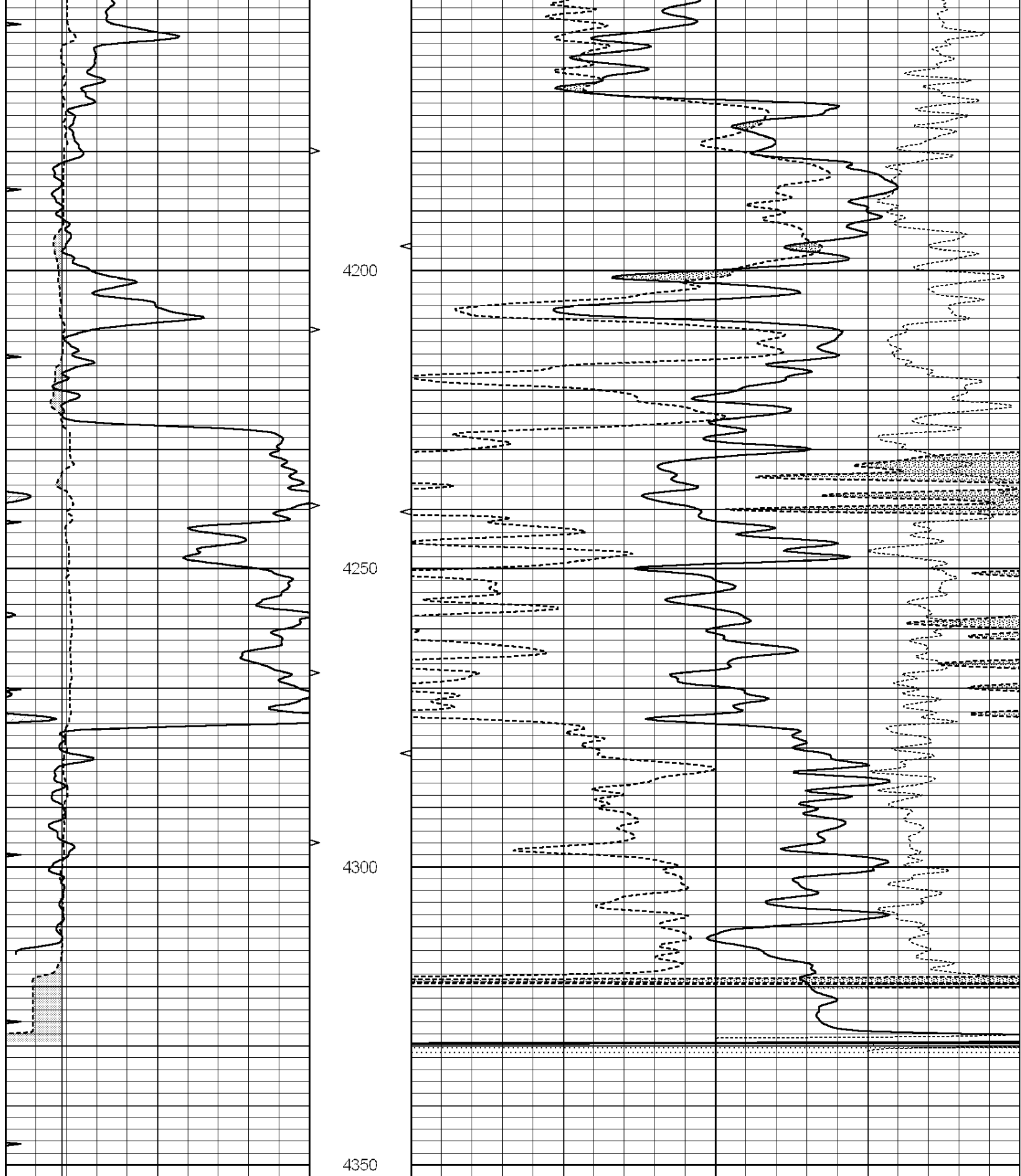
0	GAMMA RAY (GAPI)	150	AVTX	30	COMPENSATED DENSITY (pu)	-10	
6	CALIPER (in)	16	10 (ft3)	0 30	COMPENSATED NEUTRON (pu)	-10	
0	MINMK	20	BVTX		-0.25	CORRECTION (g/cc)	0.25
			0 (ft3)	10			

REPEAT SECTION

Database File: 25822ddn.db
 Dataset Pathname: pass2.4
 Presentation Format: _den_neu
 Dataset Creation: Wed Sep 24 18:09:52 2014 by Calc Open-Cased 090629
 Charted by: Depth in Feet scaled 1:240

0	GAMMA RAY (GAPI)	150	AVTX	30	COMPENSATED DENSITY (pu)	-10
6	CALIPER (in)	16	10 (ft3)	0 30	COMPENSATED NEUTRON (pu)	-10
0	MINMK	20	BVTX		-0.25 CORRECTION (g/cc)	0.25
			0 (ft3)	10		





0	GAMMA RAY (GAPI)	150	AVTX	30	COMPENSATED DENSITY (pu)	-10	
6	CALIPER (in)	16	10 (ft3)	0 30	COMPENSATED NEUTRON (pu)	-10	
0	MINMK	20	BVTX		-0.25	CORRECTION (g/cc)	0.25
			0 (ft3)	10			

Calibration Report

Database File: 25822ddn.db
 Dataset Pathname: pass8.6
 Dataset Creation: Wed Sep 24 21:10:55 2014

Compensated Density Calibration Report

Serial-Model: GEAR2-GEARHART
 Source / Verifier: 147 / 147
 Master Calibration Performed: Sun Jul 20 17:10:56 2014

Master Calibration

	Density		Far Detector	Near Detector	
Magnesium	1.710	g/cc	1042.05	508.01	cps
Aluminum	2.590	g/cc	237.55	354.09	cps
Spine Angle = 76.28			Density/Spine Ratio = 0.578		
	Size		Reading		
Small Ring	8.40	in	3.72	V	
Large Ring	14.00	in	5.31	V	

Compensated Neutron Calibration Report

Serial Number: 080621
 Tool Model: Probe

PRE-SURVEY VERIFICATION

Detector	Readings	Measured	Target
Short Space	cps		
Long Space	cps	pu	pu

POST-SURVEY VERIFICATION

Detector	Readings	Measured	Target
Short Space	cps		
Long Space	cps	pu	pu

Gamma Ray Calibration Report

Serial Number: 080328
 Tool Model: Probe1
 Performed: Sat Nov 19 09:15:32 2011

Calibrator Value: 1.0 GAPI

Background Reading: 0.0 cps
 Calibrator Reading: 1.0 cps

Sensitivity: 0.2500 GAPI/cps