



**COMPLETION  
& PRODUCTION  
SERVICES CO.**

**MICRO  
LOG**

Company PROLIFIC RESOURCES LLC.  
Well FROETSCHNER #1  
Field WILDCAT  
County PAWNEE State KANSAS

Company PROLIFIC RESOURCES LLC.  
Well FROETSCHNER #1  
Field WILDCAT  
County PAWNEE  
State KANSAS

Location: API #: 15-145-21788-00-00  
330 FNL & 2310 FEL  
NW - NW - NE  
SEC 11 TWP 22S RGE 18W  
Permanent Datum GROUND LEVEL Elevation 2041  
Log Measured From KELLY BUSHING 5' A.G.L.  
Drilling Measured From KELLY BUSHING  
Other Services  
CNL/CDL  
DIL/SON  
Elevation  
K.B. 2046  
D.F. 2044  
G.L. 2041

Date	9/24/14
Run Number	TW0
Depth Driller	4343
Depth Logger	4341
Bottom Logged Interval	4323
Top Log Interval	3400
Casing Driller	8 5/8 @ 1111'
Casing Logger	1114'
Bit Size	7.875
Type Fluid in Hole	CHEMICAL MUD
Density / Viscosity	9.249
pH / Fluid Loss	10.0/8.4
Source of Sample	FLOWLINE
Rim @ Meas. Temp	0.65 @ 91F
Rmf @ Meas. Temp	0.49 @ 91F
Rmc @ Meas. Temp	0.78 @ 91F
Source of Rmf / Rmc	MEASURED
Rim @ BHT	0.50 @ 119F
Time Circulation Stopped	2 HOURS
Time Logger on Bottom	
Maximum Recorded Temperature	119F
Equipment Number	3802
Location	HAYS, KS.
Recorded By	IAN MABB
Witnessed By	BOB STOLZLE

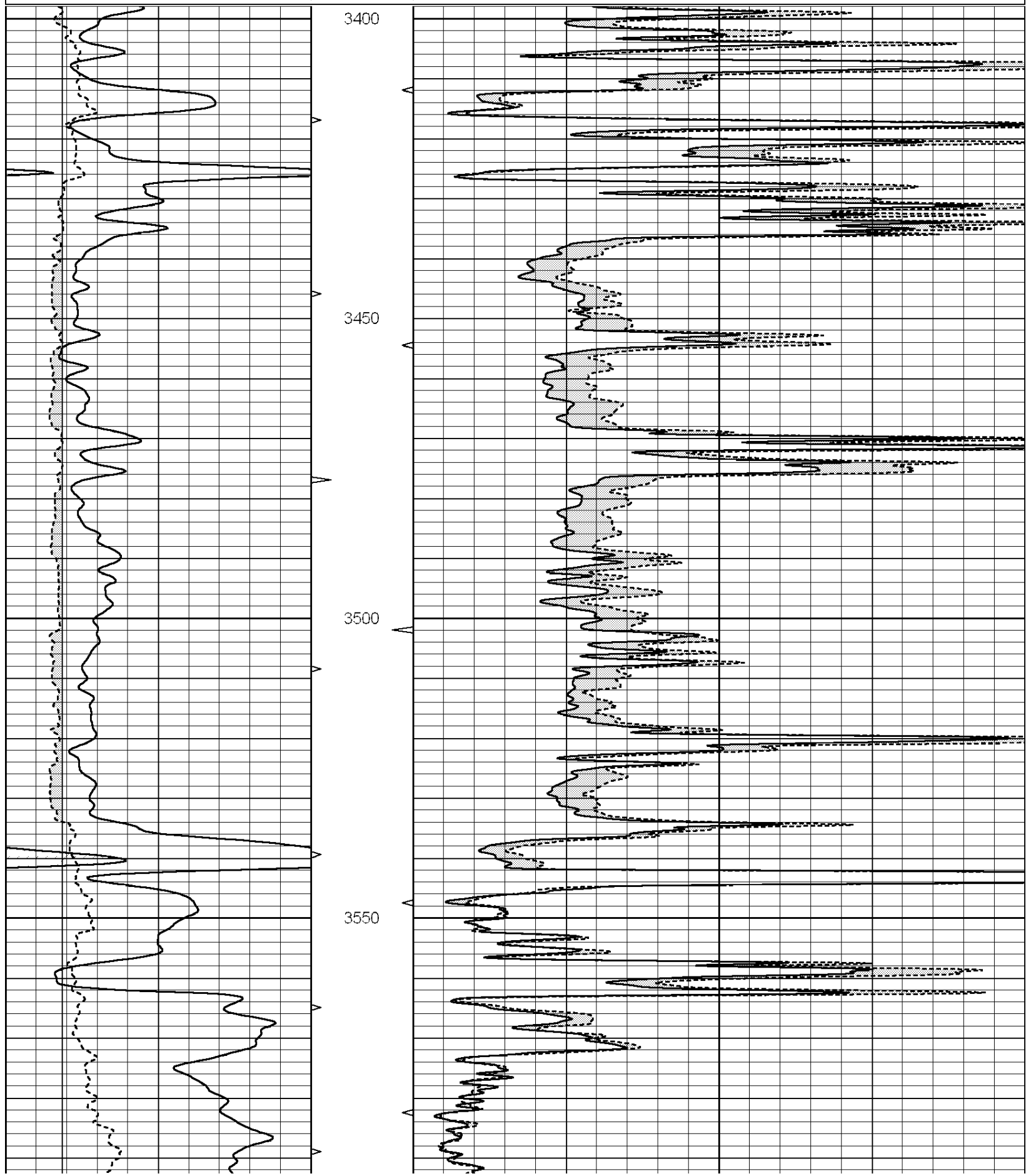
<<< Fold Here >>>

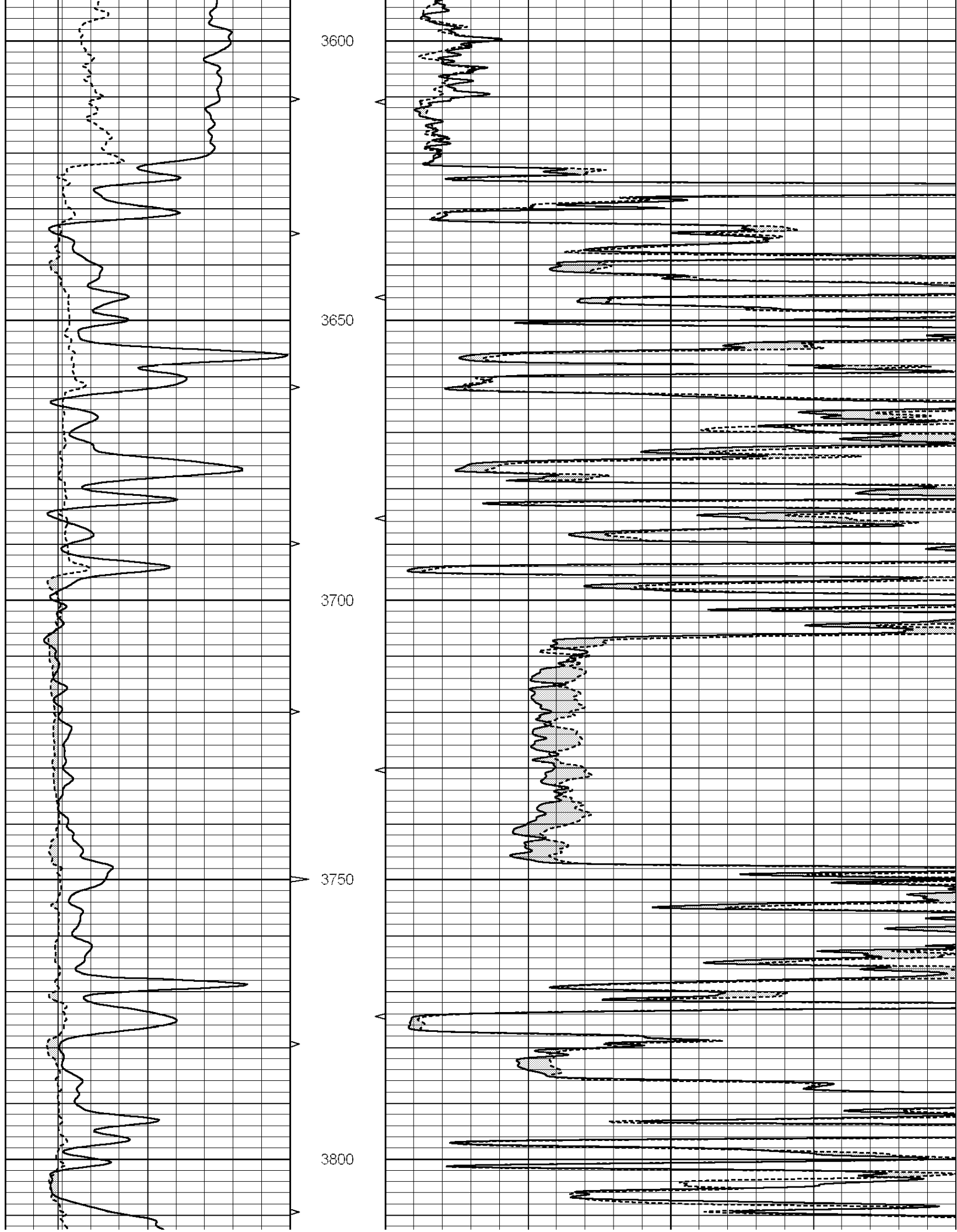
All interpretations are opinions based on inferences from electrical or other measurements and we cannot and do not guarantee the accuracy or correctness of any interpretation, and we shall not, except in the case of gross or willful negligence on our part, be liable or responsible for any loss, costs, damages, or expenses incurred or sustained by anyone resulting from any interpretation made by any of our officers, agents or employees. These interpretations are also subject to our general terms and conditions set out in our current Price Schedule.

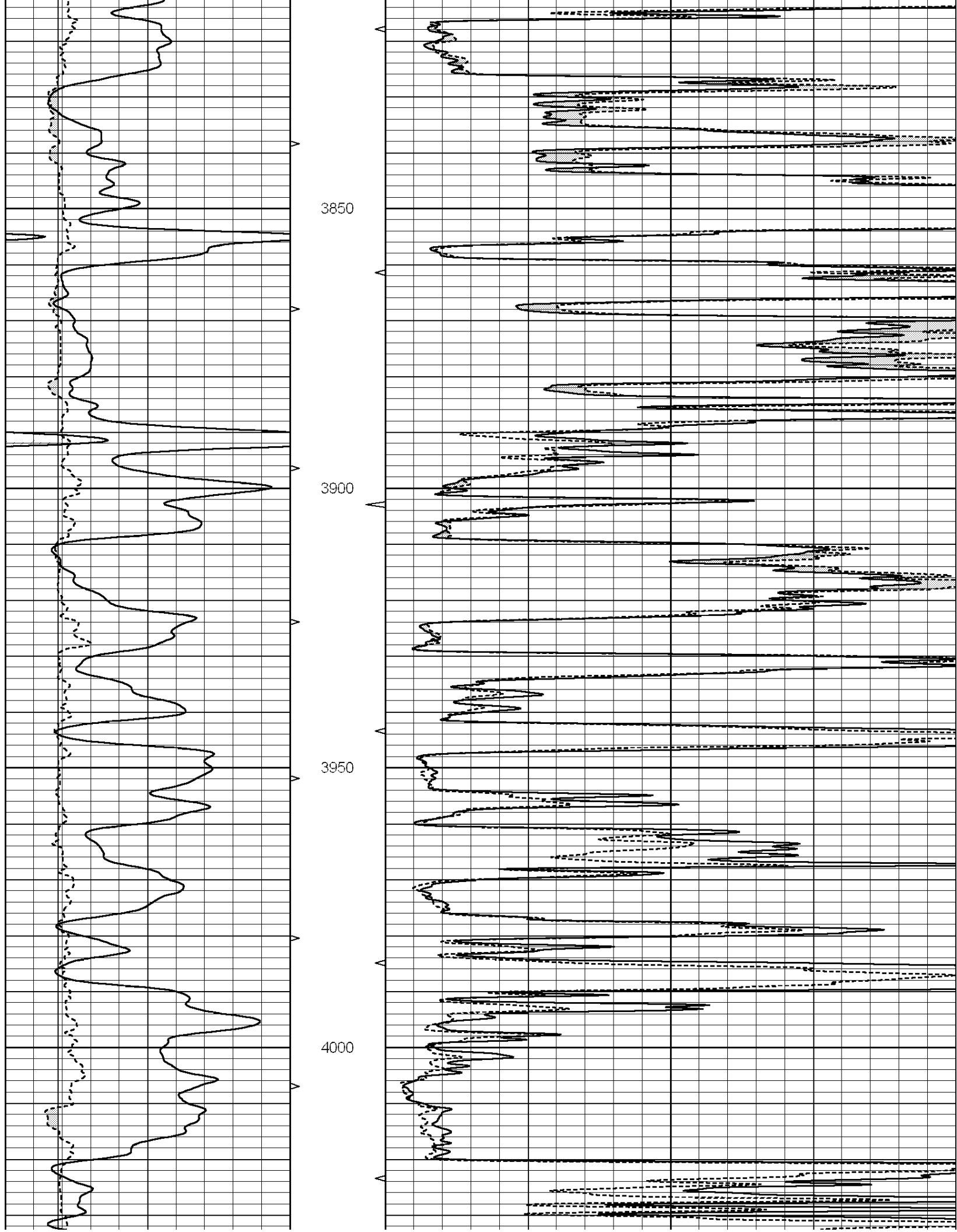
**Comments**

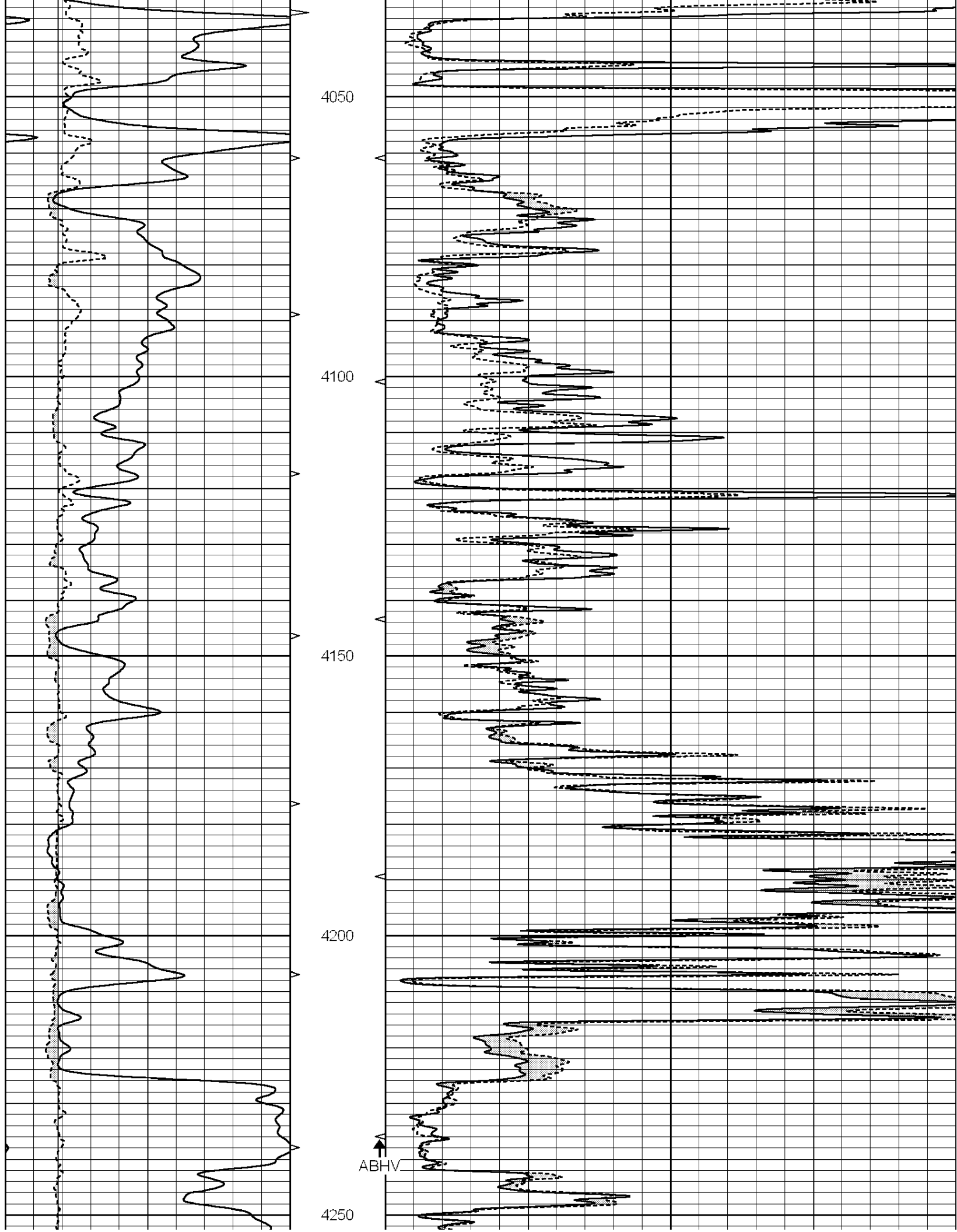
NABORS COMPLETION & PRODUCTION SERVICES CO.  
785 ( 628 - 6395 )  
THANK YOU FOR YOUR BUSINESS  
DIRECTIONS : HWY 183 & 156 - 2 MILES SOUTH TO RD L - EAST 2 1/2 MILES SOUTH INTO

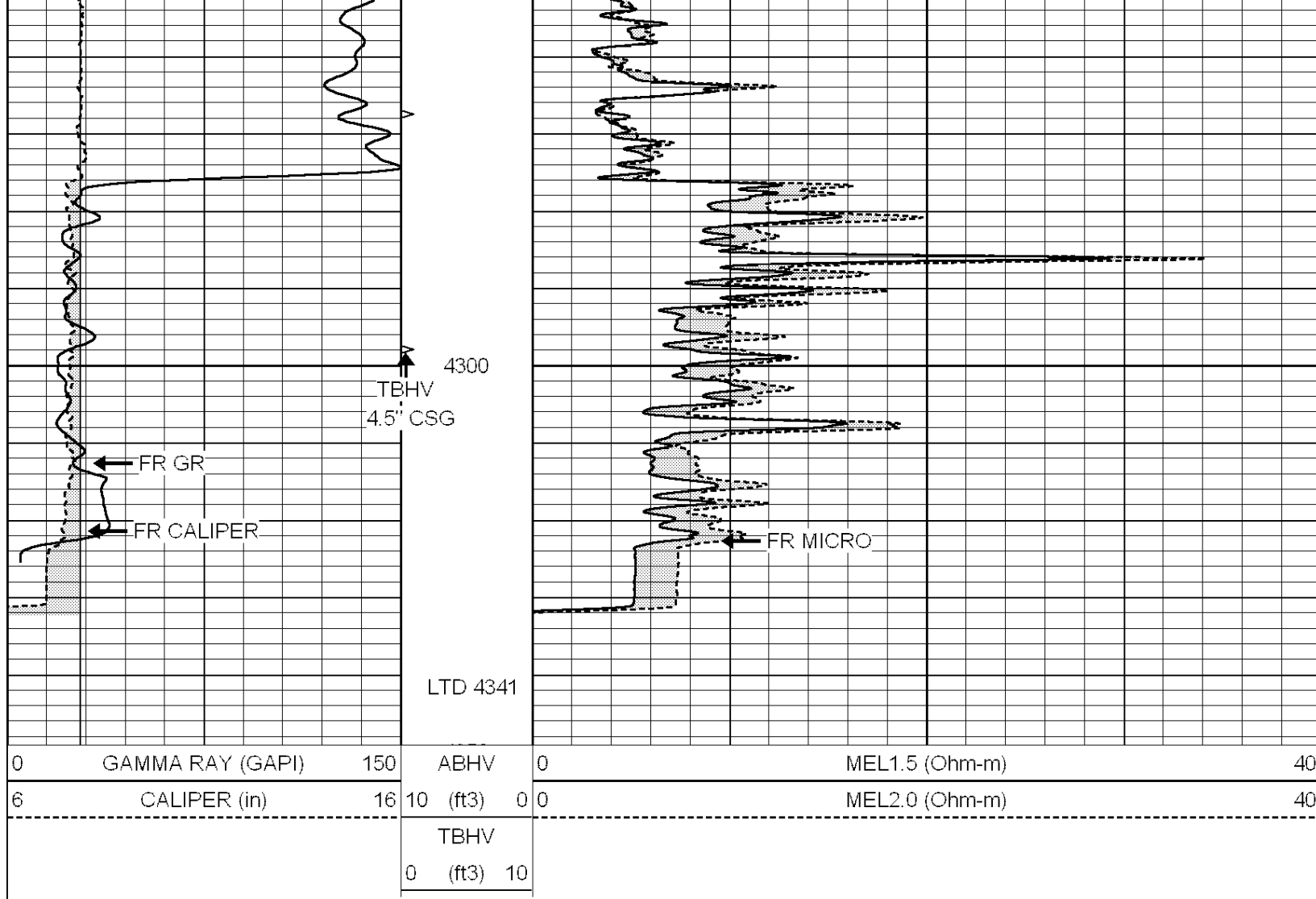
0	GAMMA RAY (GAPI)	150	ABHV	0	MEL1.5 (Ohm-m)	40
6	CALIPER (in)	16	10 (ft3)	0 0	MEL2.0 (Ohm-m)	40
			TBHV			
			0 (ft3)	10		







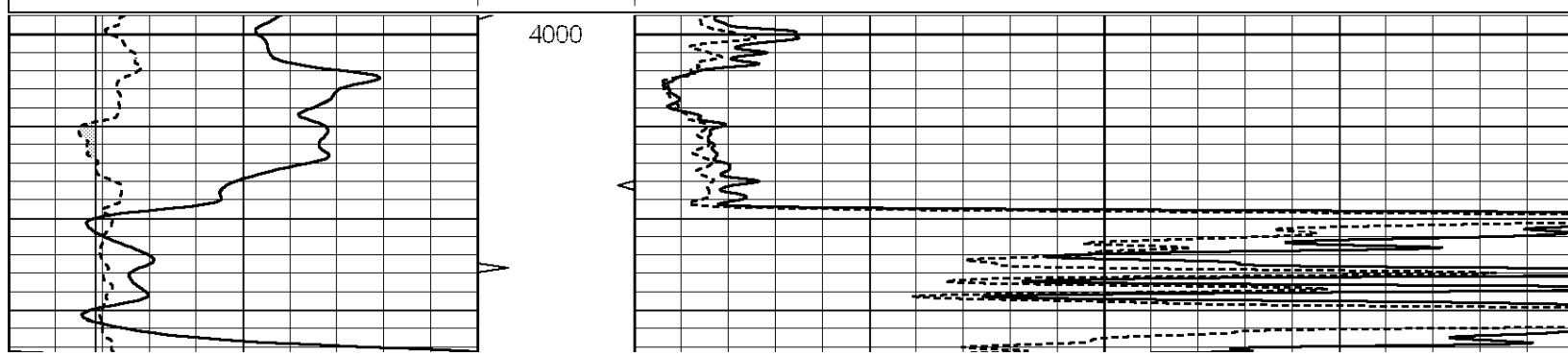


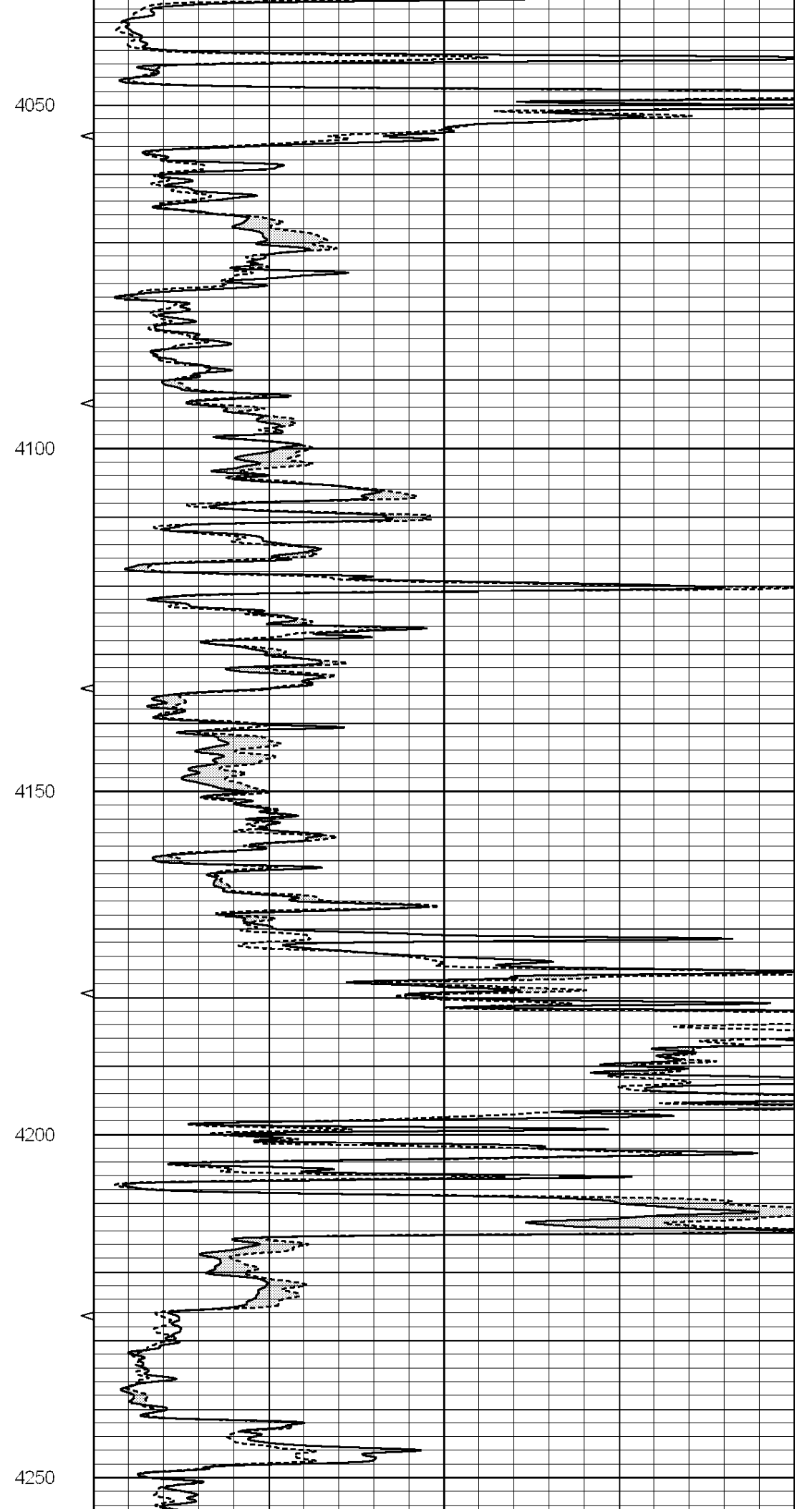
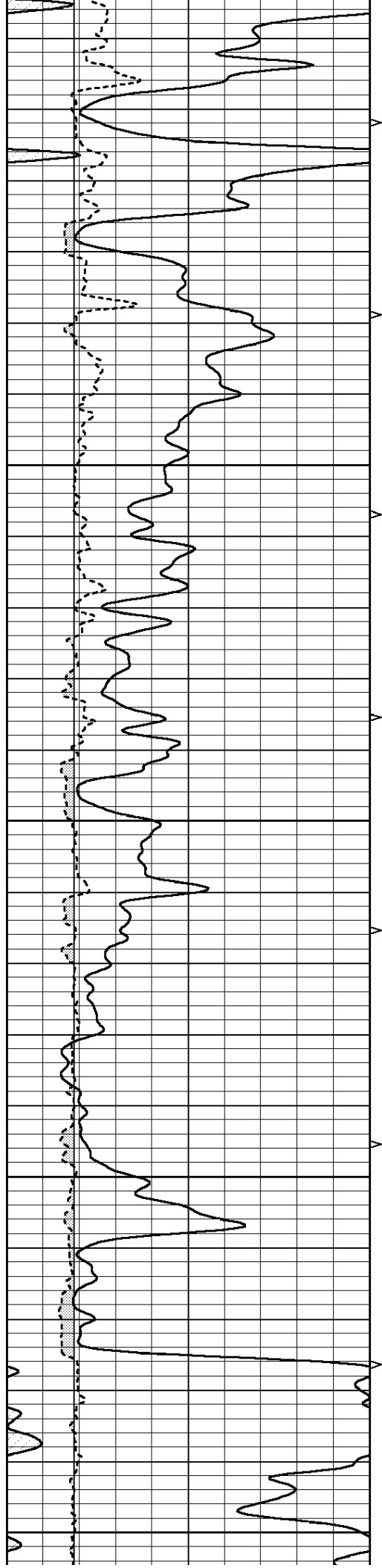


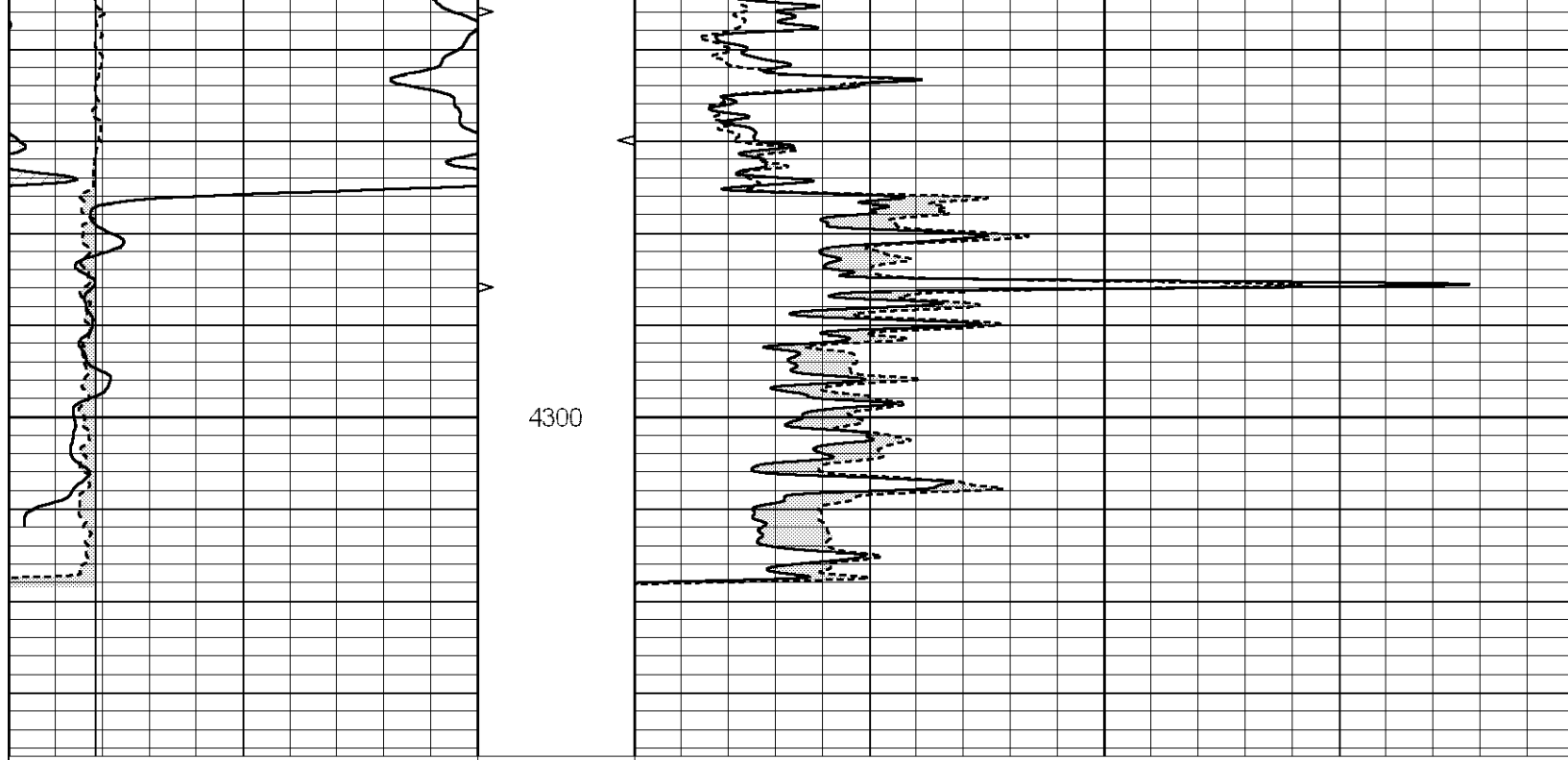
# REPEAT SECTION

Database File: 25822ddn.db  
 Dataset Pathname: pass10.4  
 Presentation Format: \_micro  
 Dataset Creation: Wed Sep 24 22:18:55 2014 by Calc Open-Cased 090629  
 Charted by: Depth in Feet scaled 1:240

0	GAMMA RAY (GAPI)	150	ABHV	0	MEL1.5 (Ohm-m)	40
6	CALIPER (in)	16	10 (ft3)	0	MEL2.0 (Ohm-m)	40
			TBHV			
			0 (ft3)	10		







0	GAMMA RAY (GAPI)	150	ABHV	0	MEL1.5 (Ohm-m)	40
6	CALIPER (in)	16	10 (ft3)	0 0	MEL2.0 (Ohm-m)	40
			TBHV			
			0 (ft3)	10		

Calibration Report

Database File: 25822ddn.db  
 Dataset Pathname: pass11.9  
 Dataset Creation: Wed Sep 24 23:08:22 2014

MICRO Calibration Report

Serial Number:	MICRO4	
Tool Model:	PROBE	
Performed:	Tue Sep 02 04:03:48 2014	
Caliper Calibration:	Gain=2.000	Offset=-4.200
References	Low Cal 8.600	High Cal 14.000
Readings	5.934	7.767
1.5" Calibration:	Gain=49.000	Offset=-2.000
References	Low Cal 0.000	High Cal 20.000
Readings	0.013	1.547
2" Calibration:	Gain=52.000	Offset=-1.300
References	Low Cal 0.000	High Cal 20.000
Readings	0.017	1.202

Gamma Ray Calibration Report

Serial Number: GR2  
 Tool Model: OPEN  
 Performed: Tue Sep 02 04:03:46 2014

Calibrator Value:	200.0	GAPI
Background Reading:	0.0	cps
Calibrator Reading:	740.0	cps
Sensitivity:	0.3500	GAPI/cps