



**COMPLETION
& PRODUCTION
SERVICES CO.**

**DUAL
INDUCTION
LOG**

Company PROLIFIC RESOURCES LLC.
Well FROETSCHNER #1
Field WILDCAT
County PAWNEE State KANSAS

Company PROLIFIC RESOURCES LLC.
Well FROETSCHNER #1
Field WILDCAT
County PAWNEE
State KANSAS

Location: API #: 15-145-21788-00-00
330 FNL & 2310 FEL
NW - NW - NE
SEC 11 TWP 22S RGE 18W
Permanent Datum GROUND LEVEL Elevation 2041
Log Measured From KELLY BUSHING 5' A.G.L.
Drilling Measured From KELLY BUSHING
Other Services
CNL/CDL
MEL/SON
Elevation
K.B. 2046
D.F. 2044
G.L. 2041

Date	9/24/14
Run Number	ONE
Depth Driller	4343
Depth Logger	4341
Bottom Logged Interval	4339
Top Log Interval	00
Casing Driller	8 5/8 @ 1111'
Casing Logger	1114'
Bit Size	7.875
Type Fluid in Hole	CHEMICAL MUD
Density / Viscosity	9.249
pH / Fluid Loss	10.0/8.4
Source of Sample	FLOWLINE
Rim @ Meas. Temp	0.65 @ 91F
Rmf @ Meas. Temp	0.49 @ 91F
Rmc @ Meas. Temp	0.78 @ 91F
Source of Rmf / Rmc	MEASURED
Rim @ BHT	0.50 @ 119F
Time Circulation Stopped	2 HOURS
Time Logger on Bottom	
Maximum Recorded Temperature	119F
Equipment Number	3802
Location	HAYS, KS.
Recorded By	IAN MABB
Witnessed By	BOB STOLZLE

<<< Fold Here >>>

All interpretations are opinions based on inferences from electrical or other measurements and we cannot and do not guarantee the accuracy or correctness of any interpretation, and we shall not, except in the case of gross or willful negligence on our part, be liable or responsible for any loss, costs, damages, or expenses incurred or sustained by anyone resulting from any interpretation made by any of our officers, agents or employees. These interpretations are also subject to our general terms and conditions set out in our current Price Schedule.

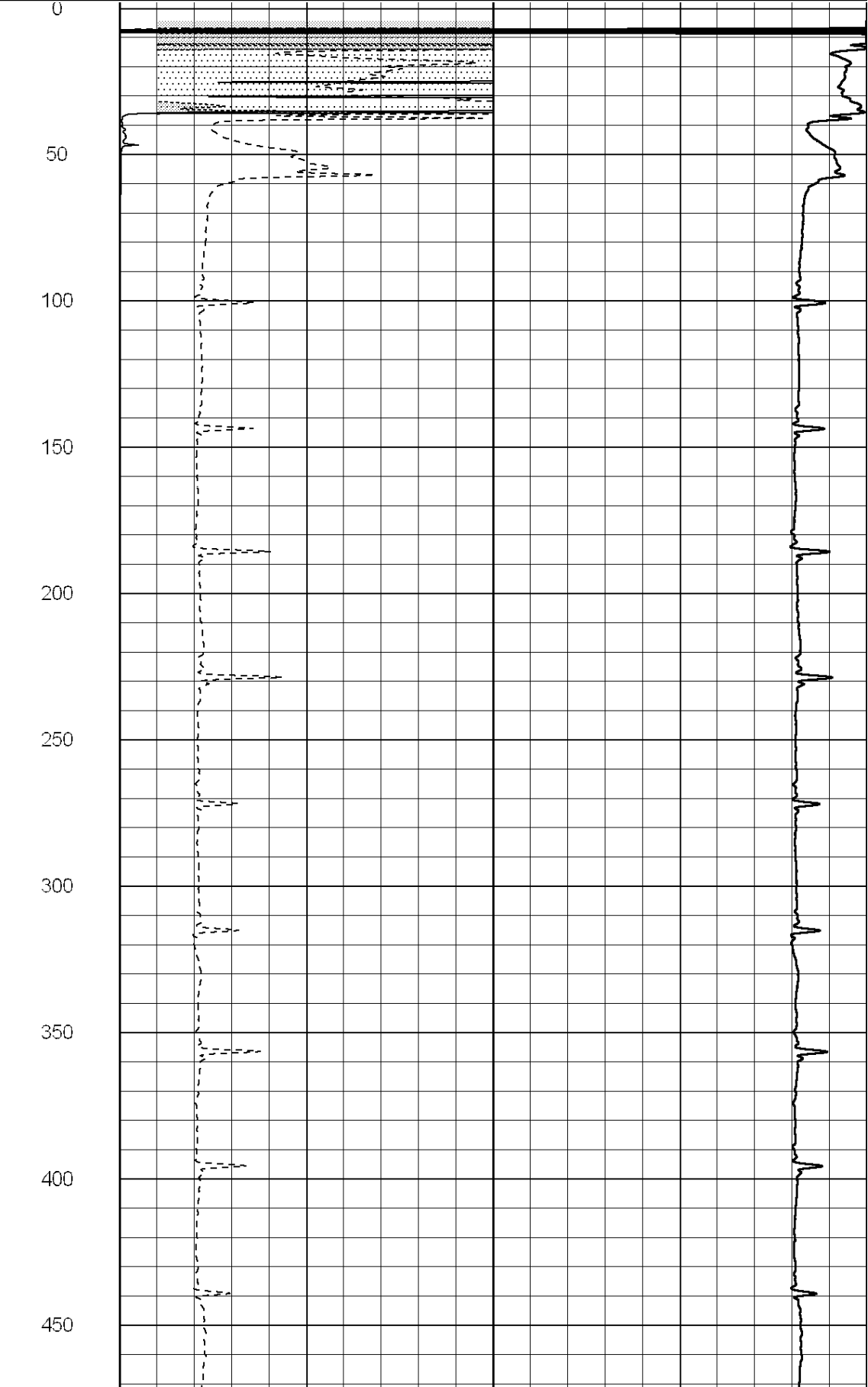
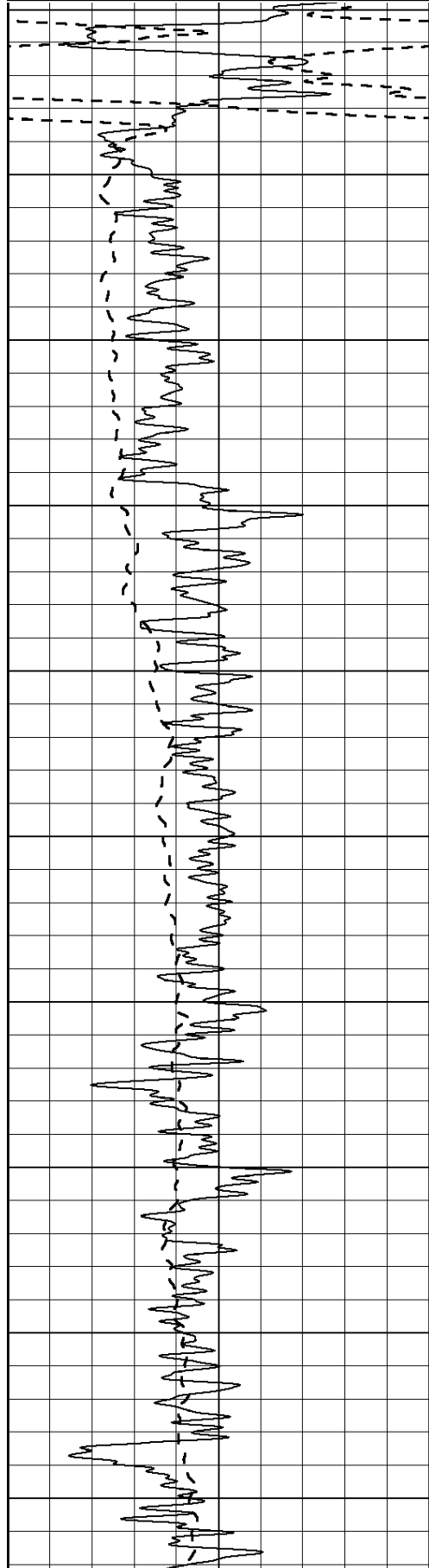
Comments

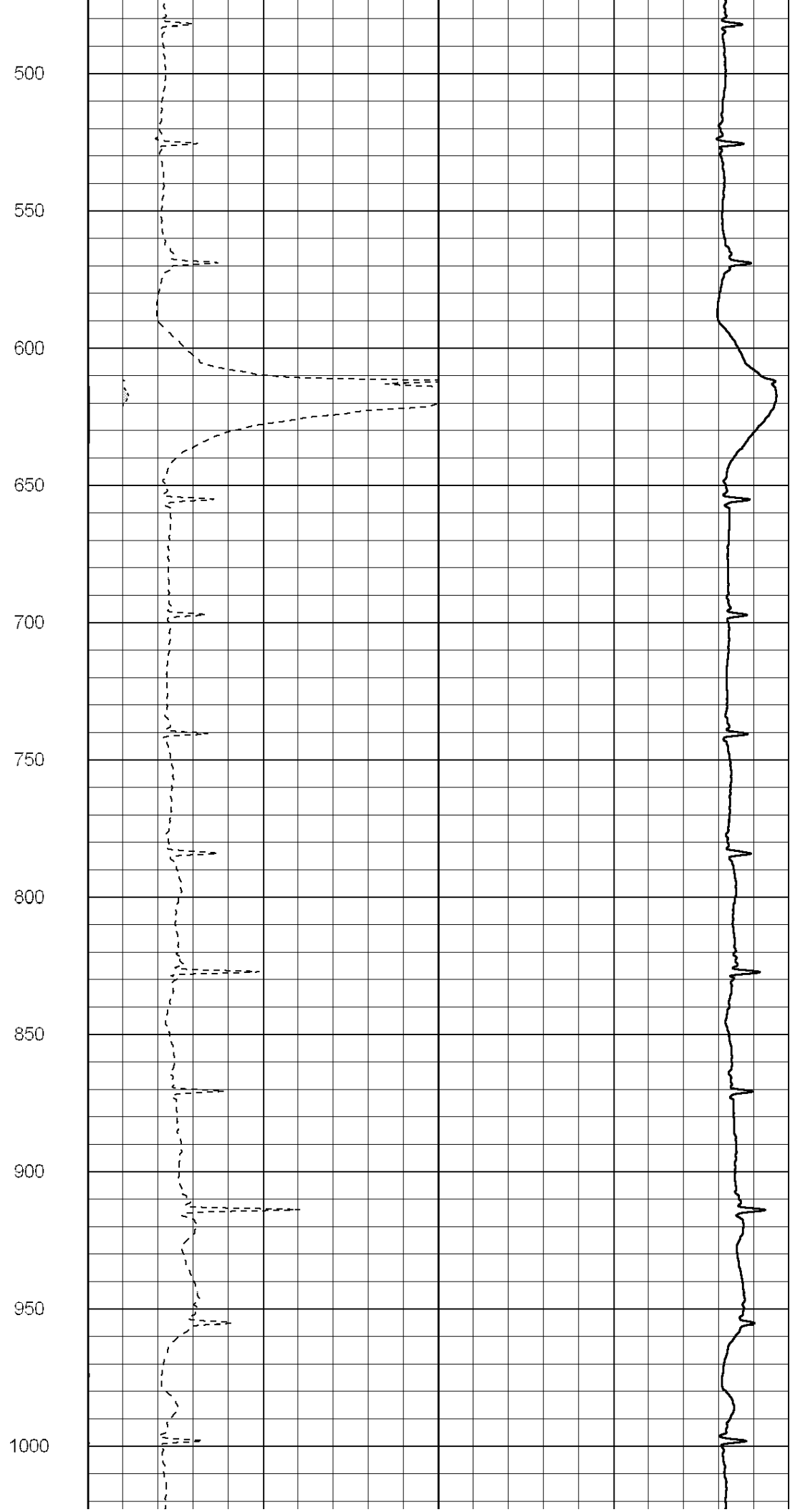
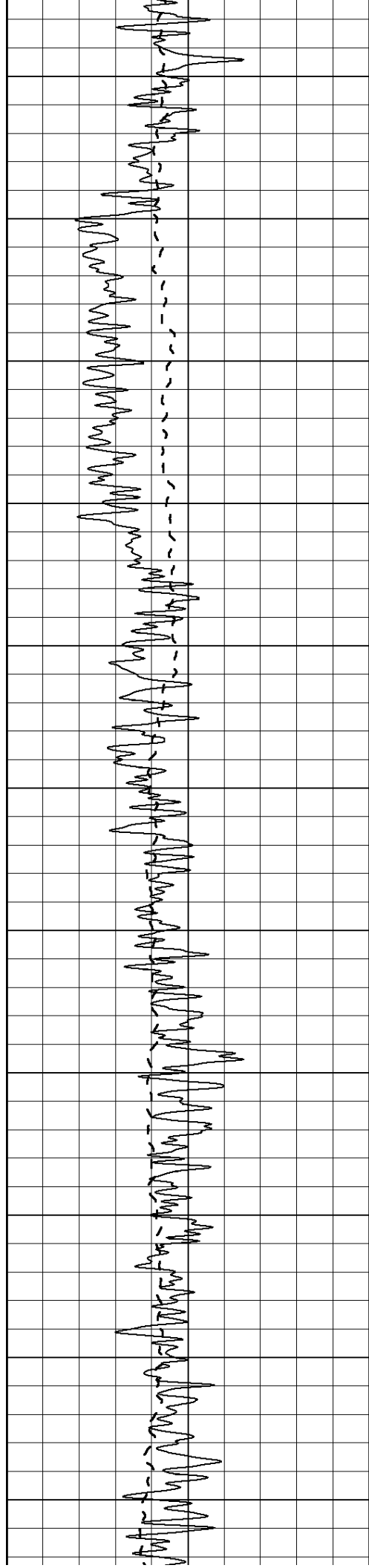
NABORS COMPLETION & PRODUCTION SERVICES CO.
785 (628 - 6395)
THANK YOU FOR YOUR BUSINESS
DIRECTIONS : HWY 183 & 156 - 2 MILES SOUTH TO RD L - EAST 2 1/2 MILES SOUTH INTO

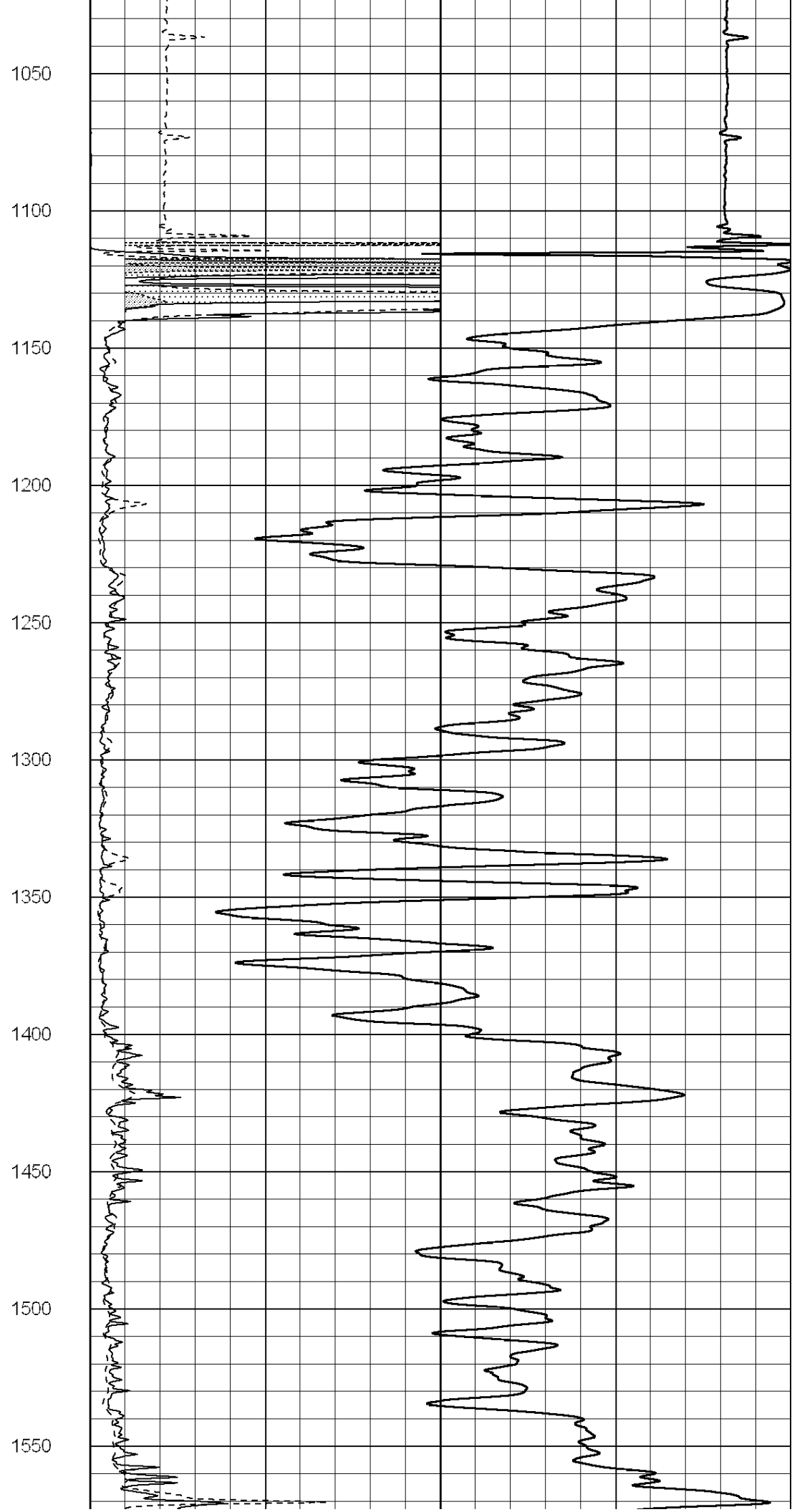
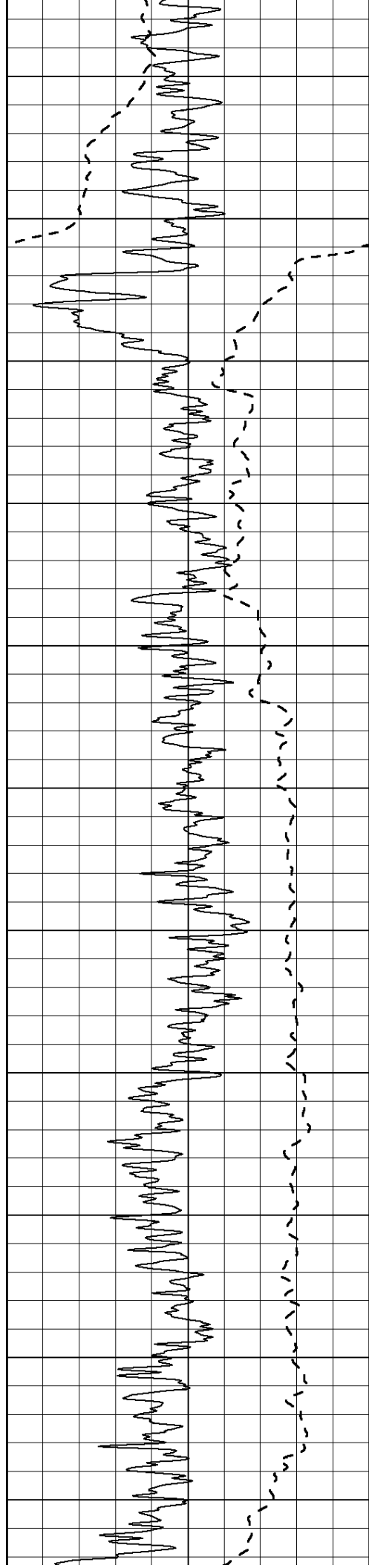
0	Gamma Ray (GAPI)	150
-100	SP (mV)	100

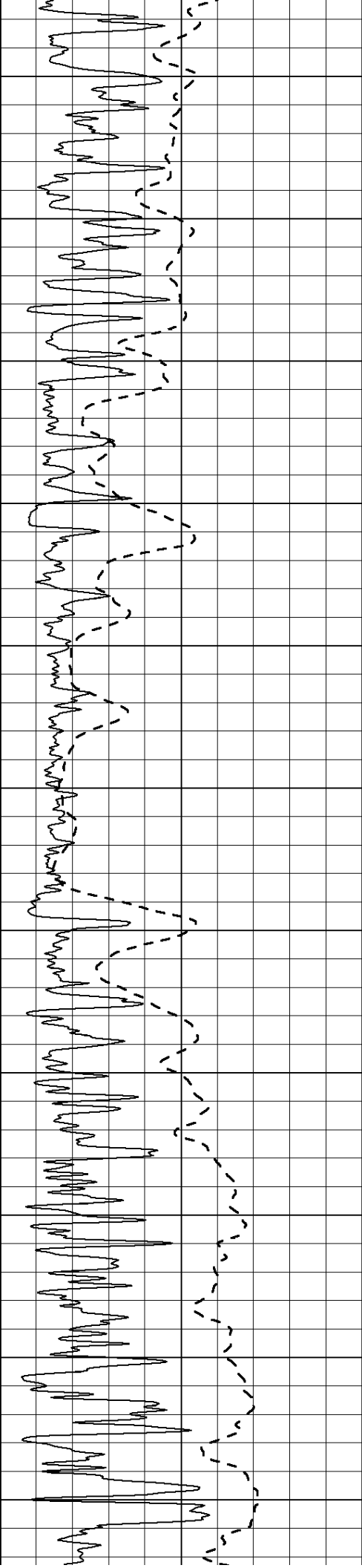
0	RLL3 (Ohm-m)	50
0	Deep Induction (Ohm-m)	50

1000	CILD (mmho/m)	0
50	RILD X10 (Ohm-m)	500
50	RLL3 X10 (Ohm-m)	500

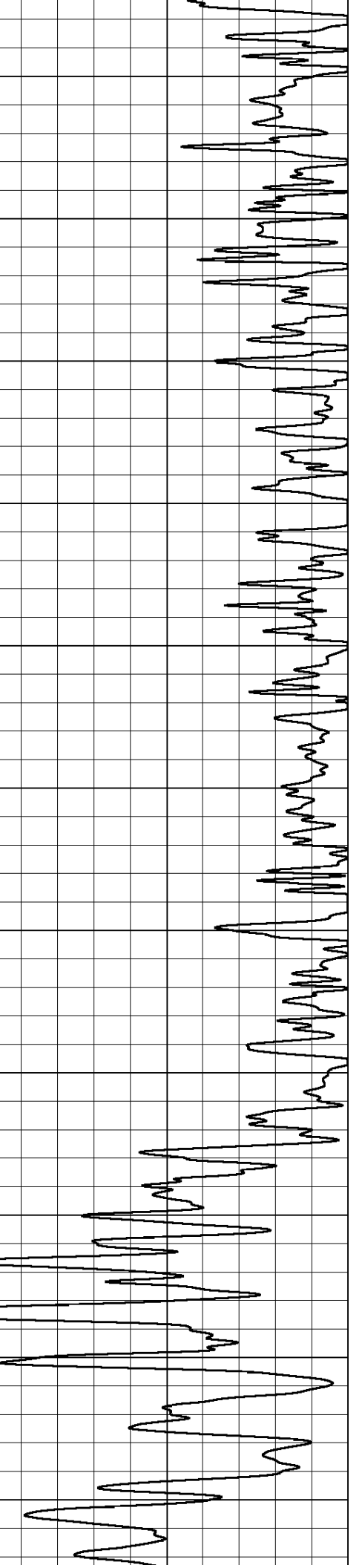
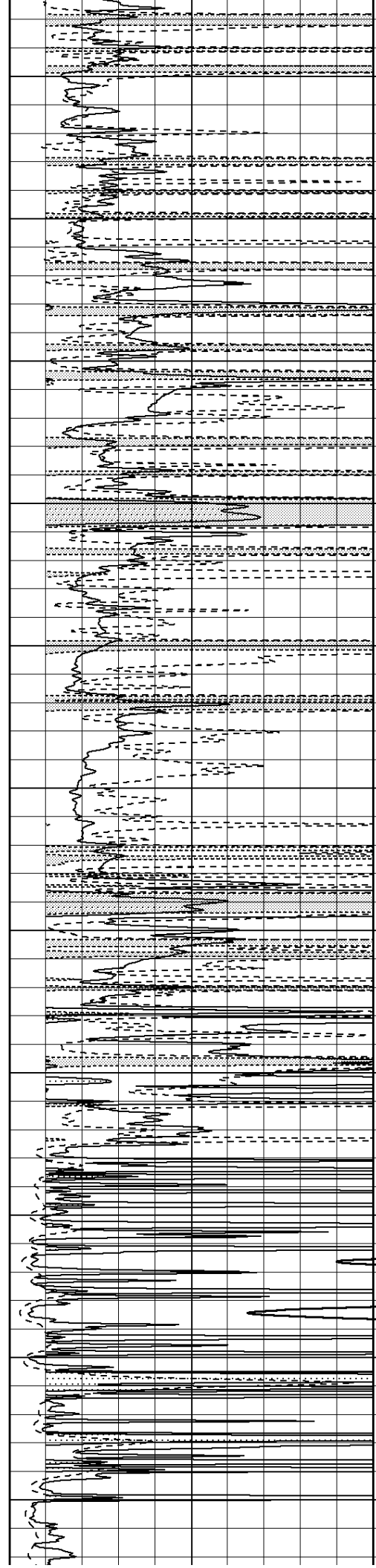


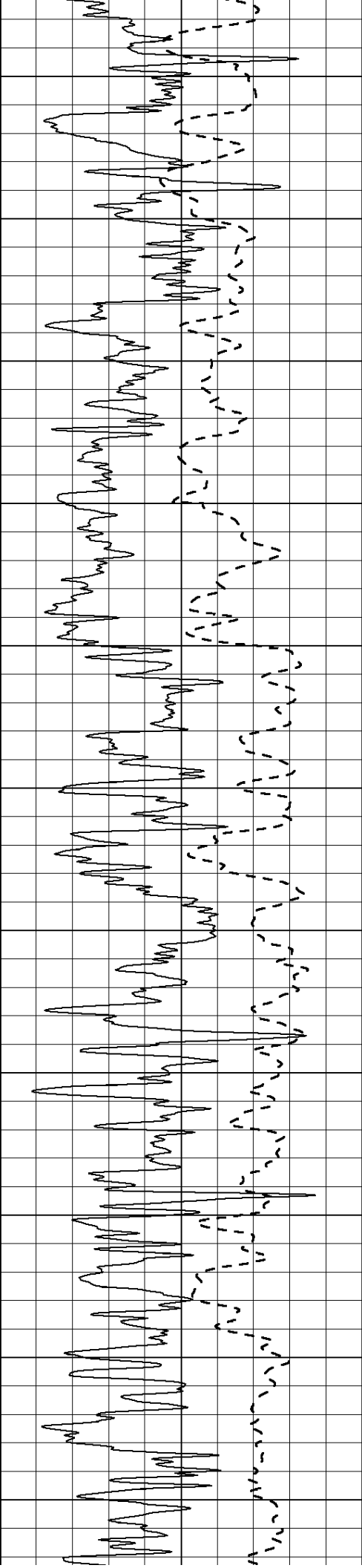




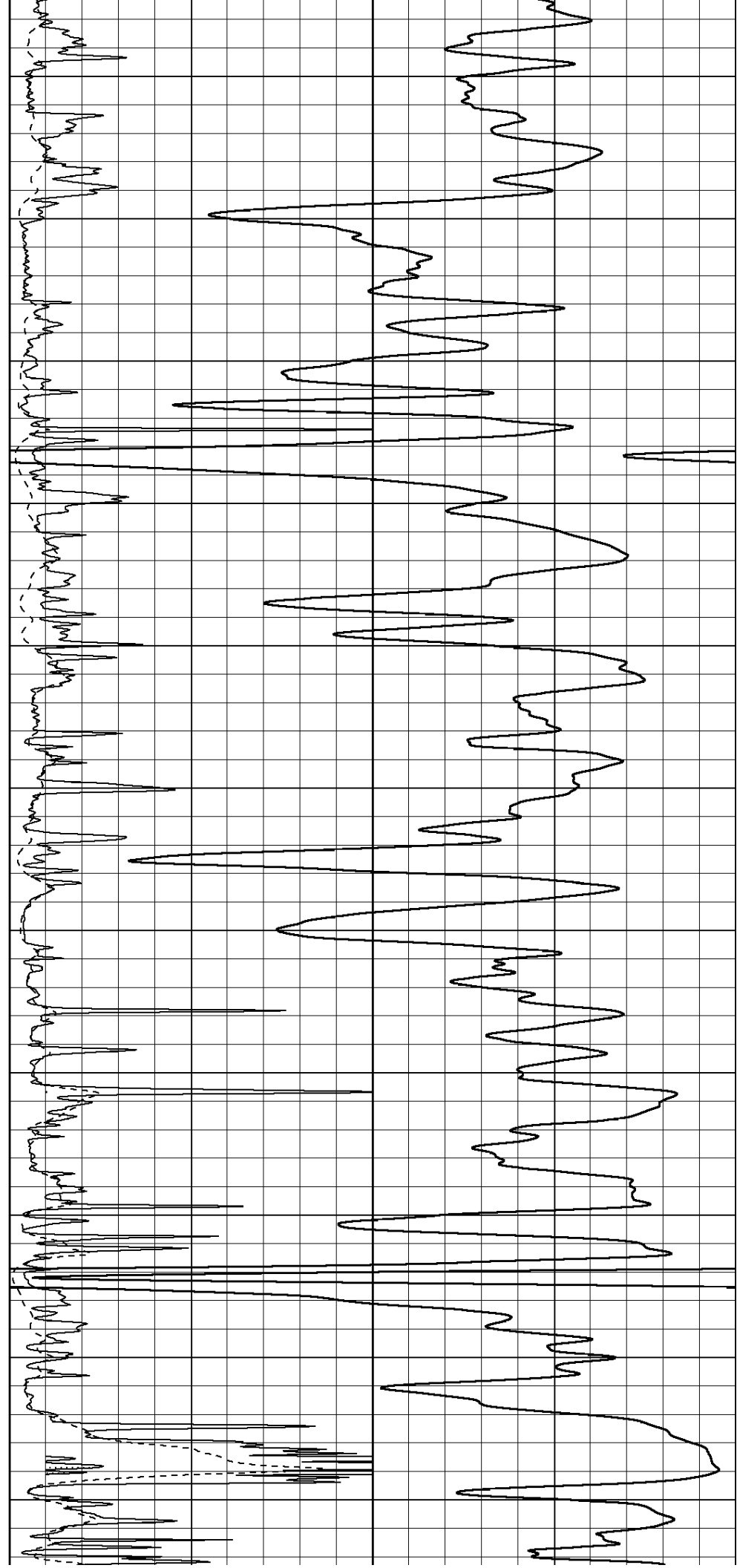


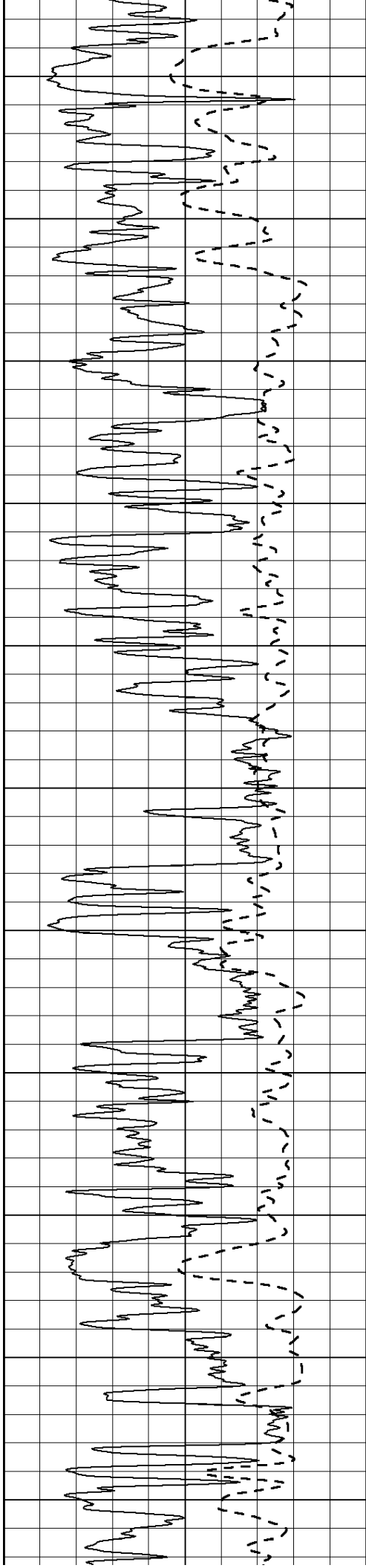
1600
1650
1700
1750
1800
1850
1900
1950
2000
2050
2100





2150
2200
2250
2300
2350
2400
2450
2500
2550
2600
2650





2700

2750

2800

2850

2900

2950

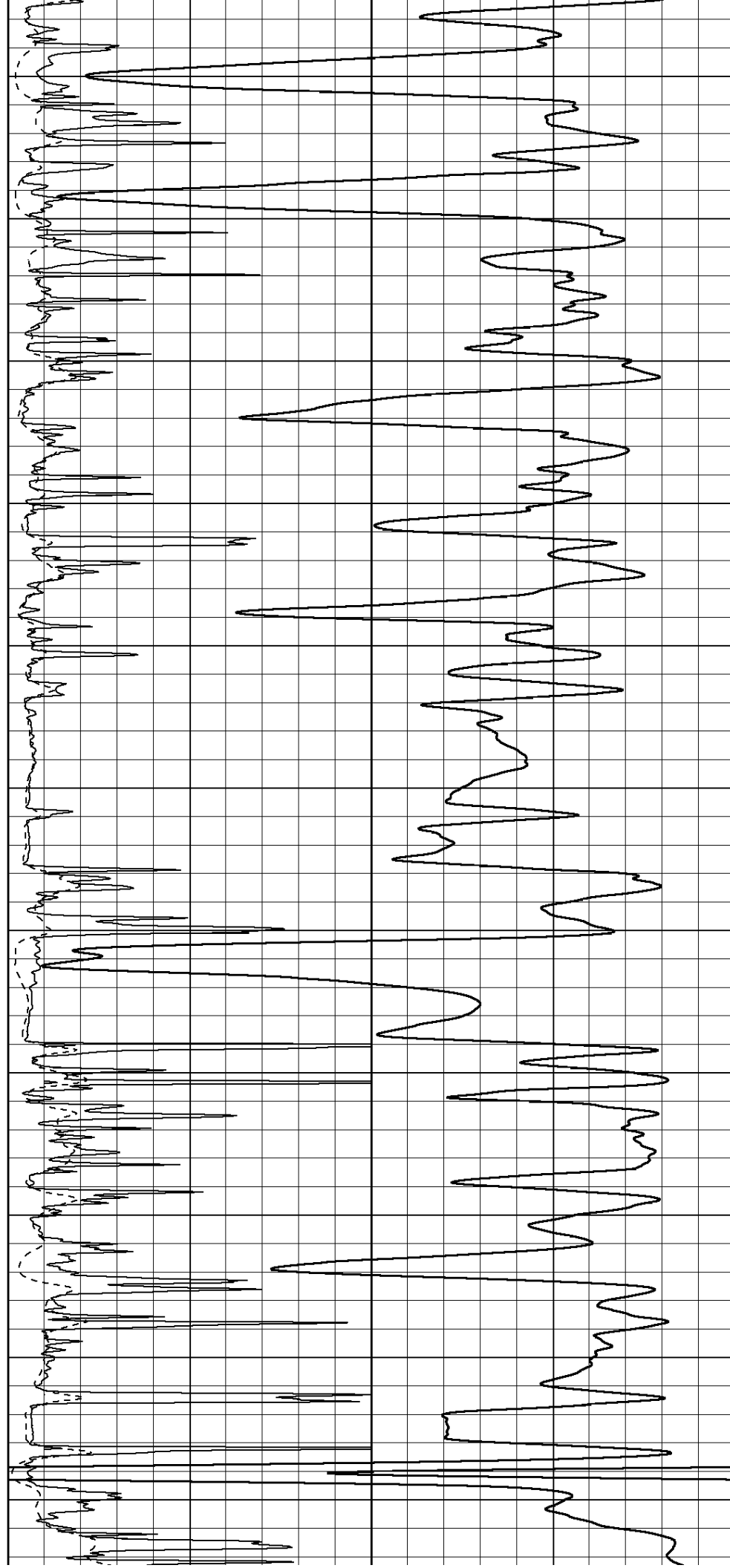
3000

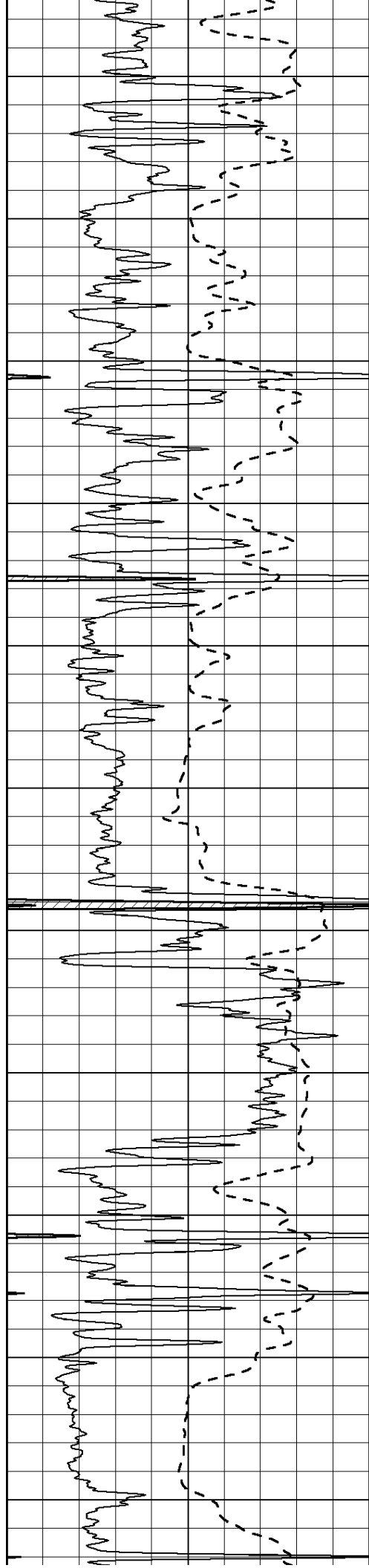
3050

3100

3150

3200





3250

3300

3350

3400

3450

3500

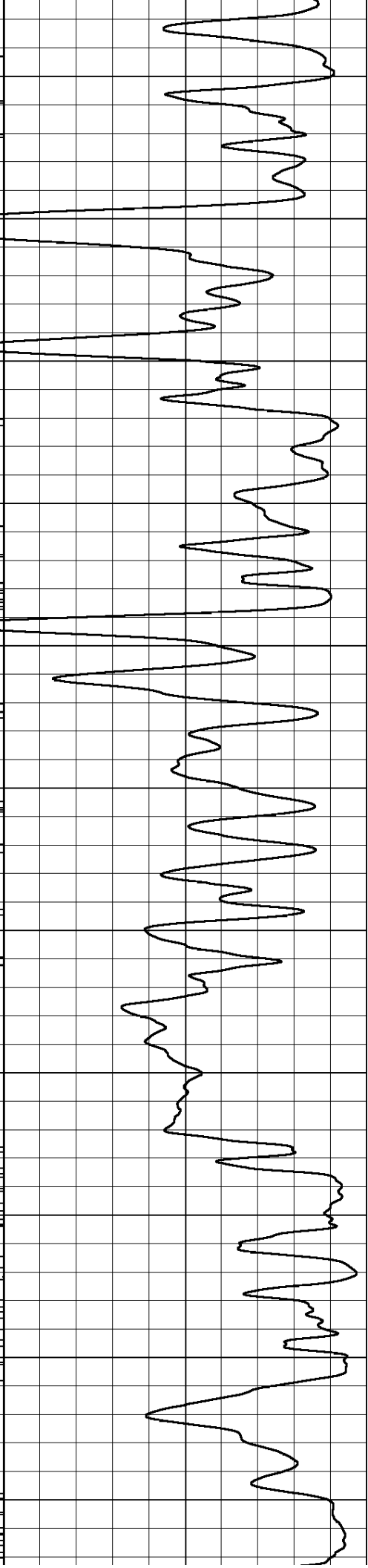
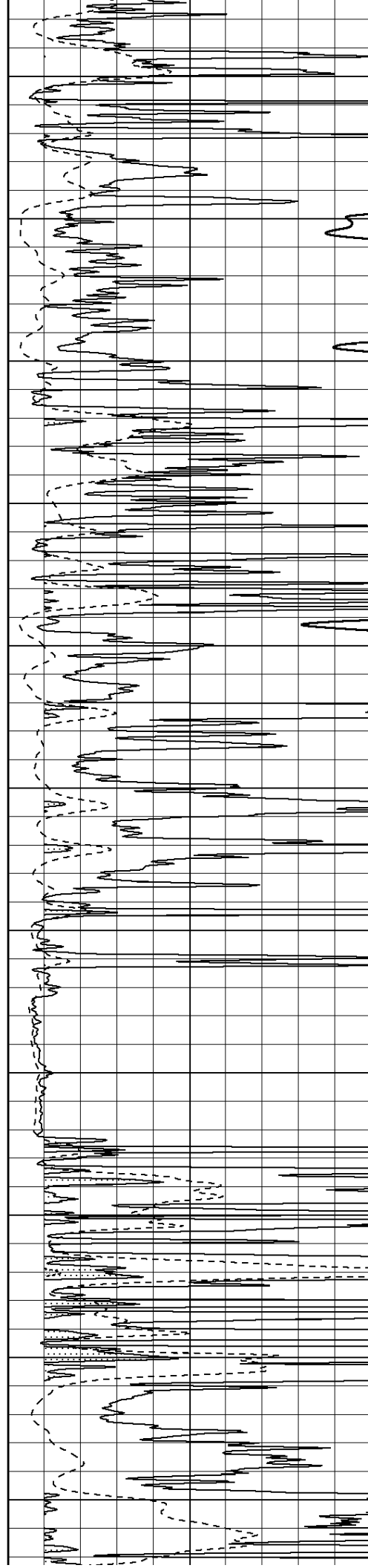
3550

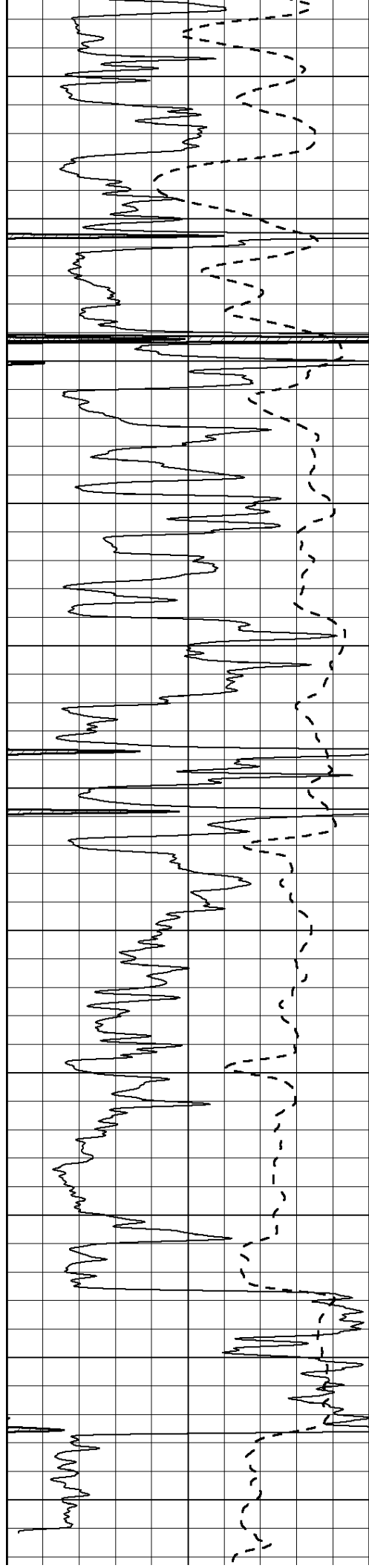
3600

3650

3700

3750





3800

3850

3900

3950

4000

4050

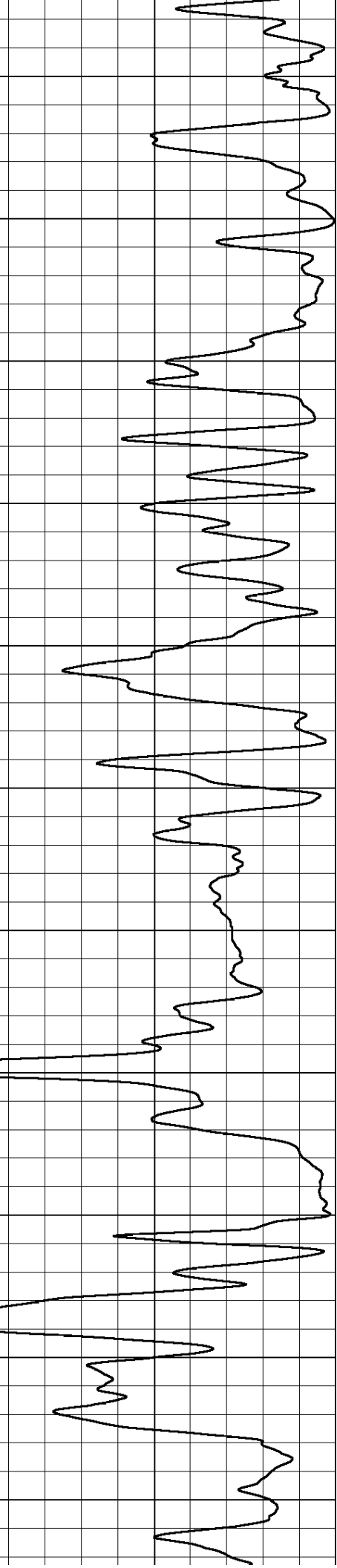
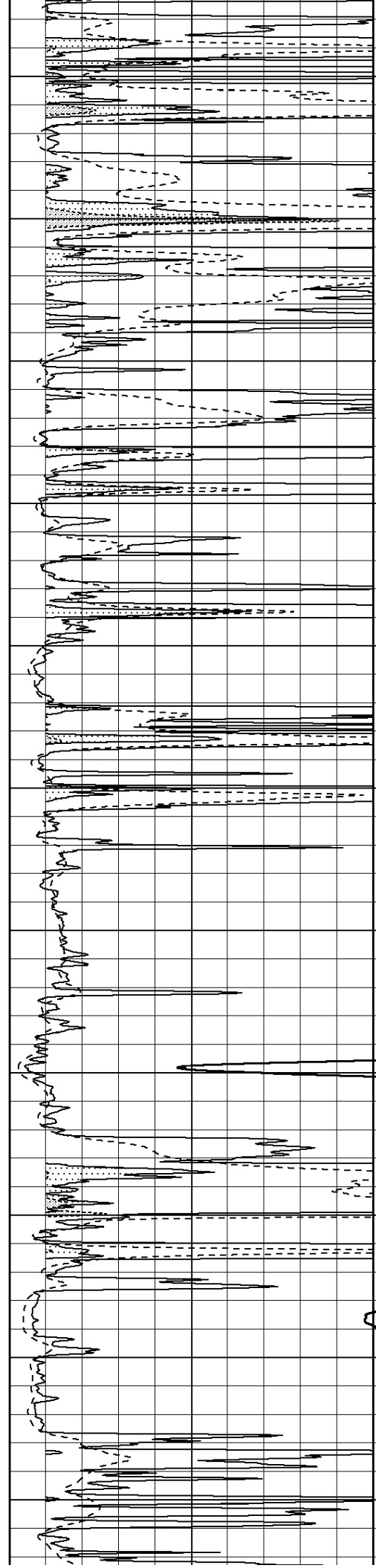
4100

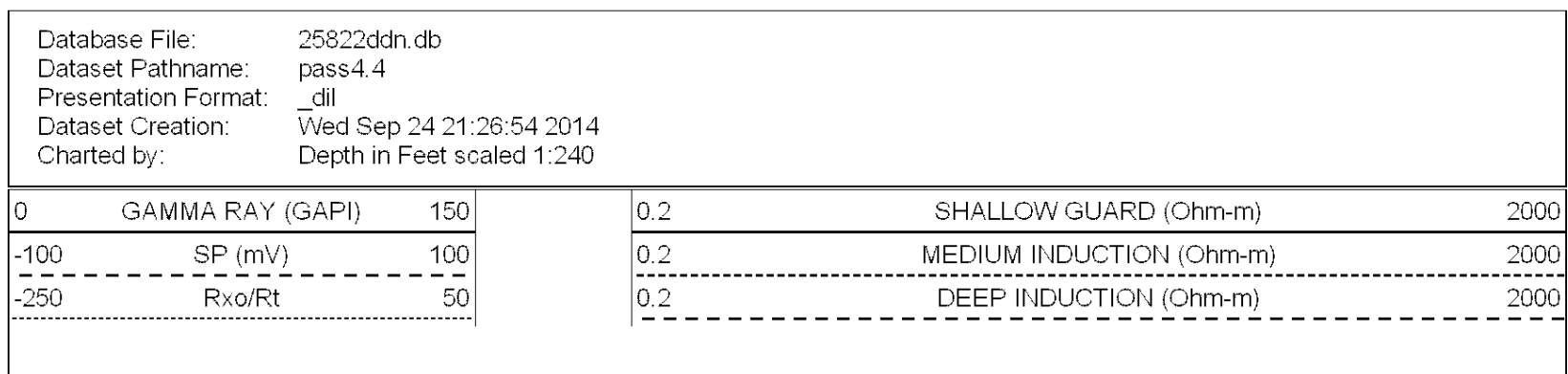
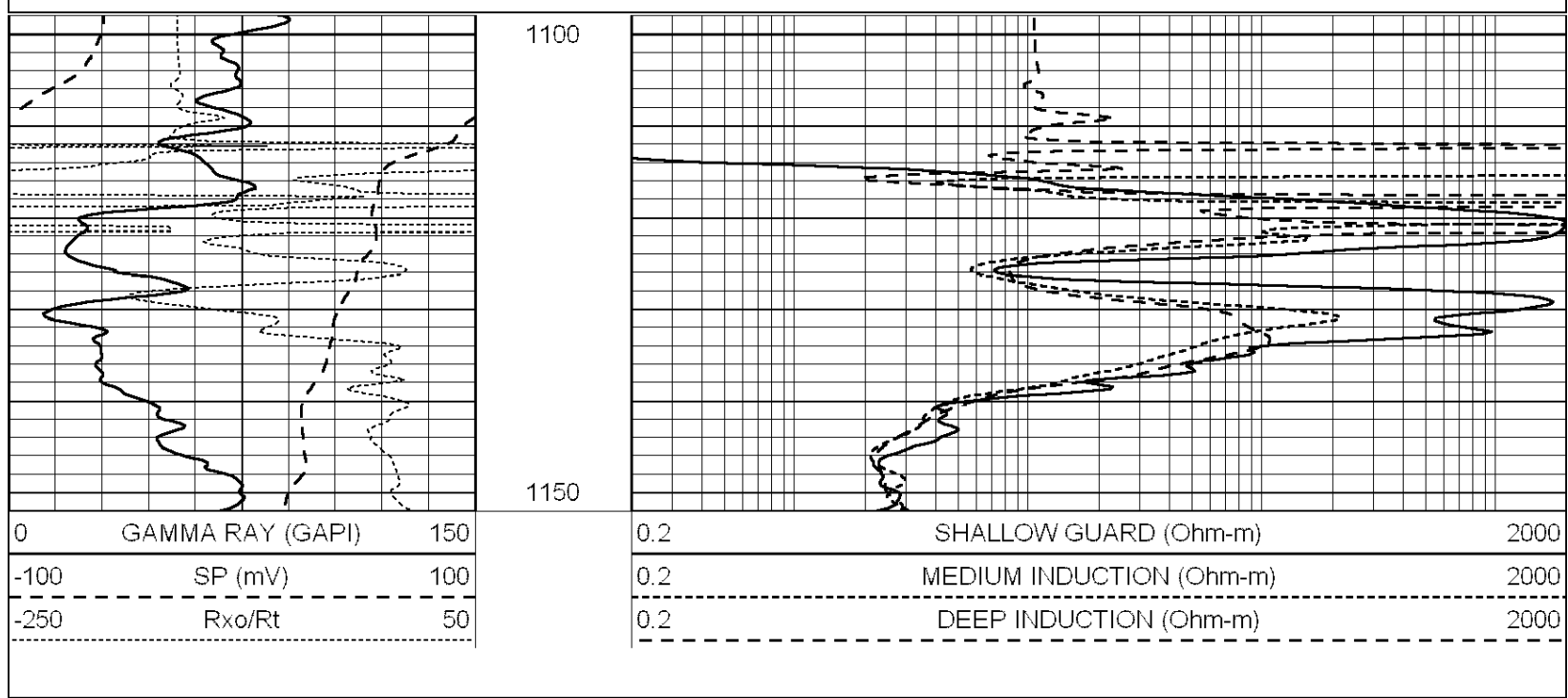
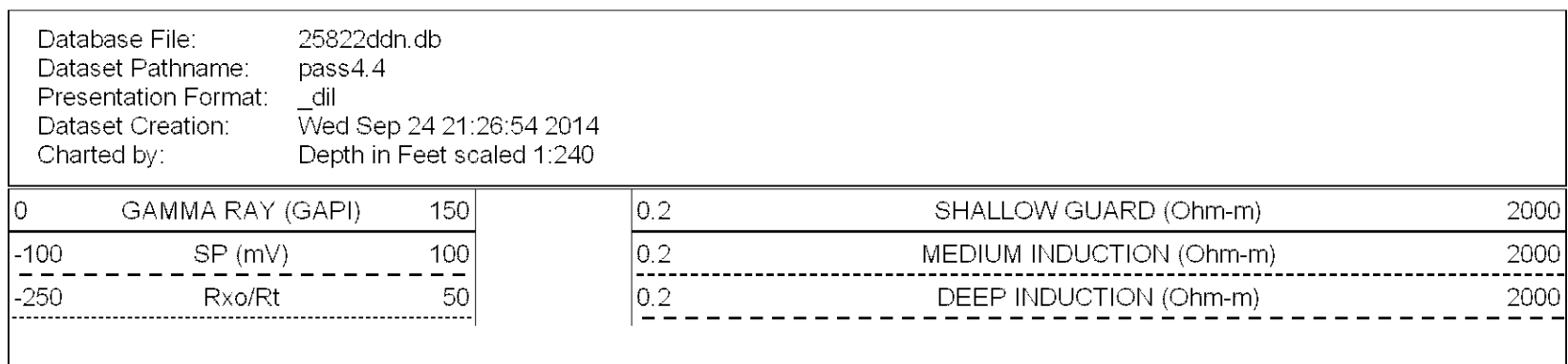
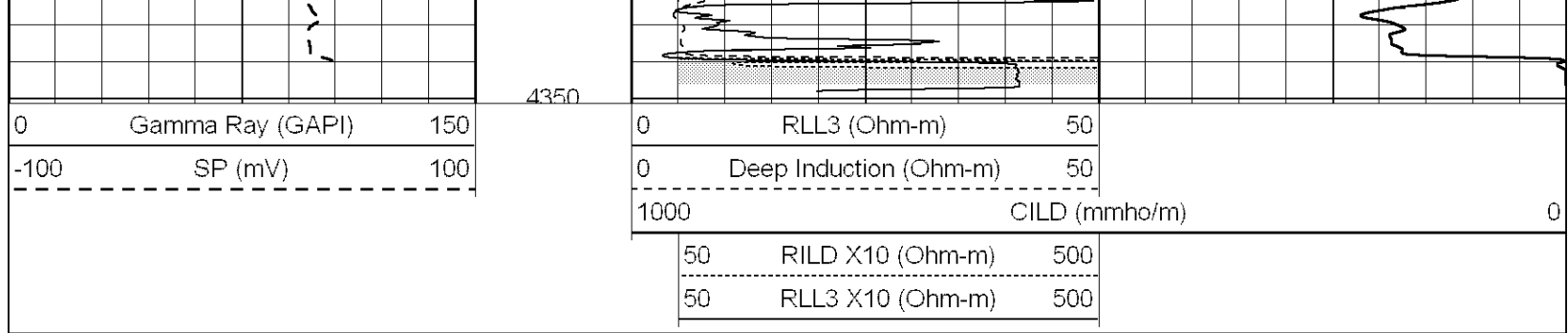
4150

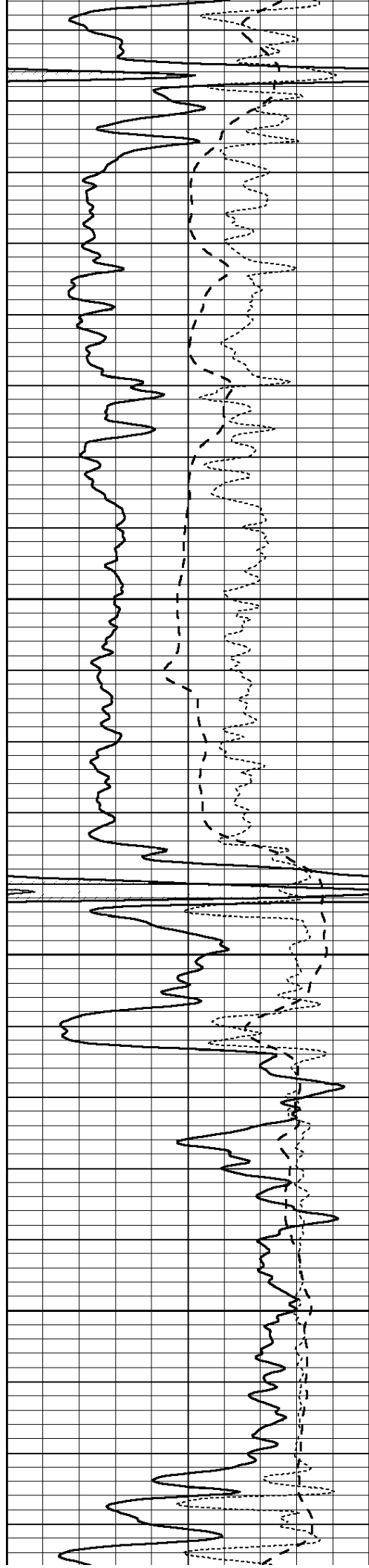
4200

4250

4300





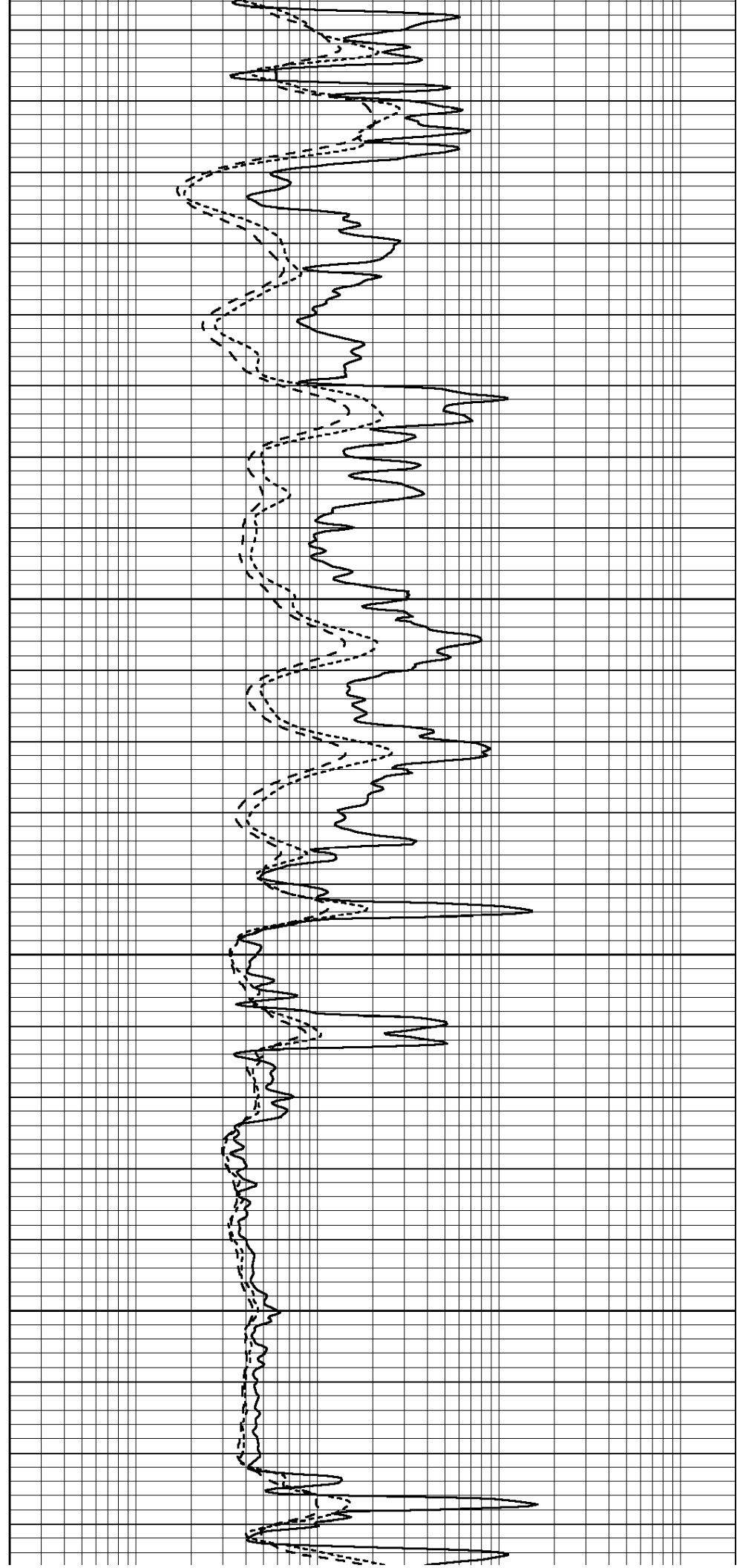


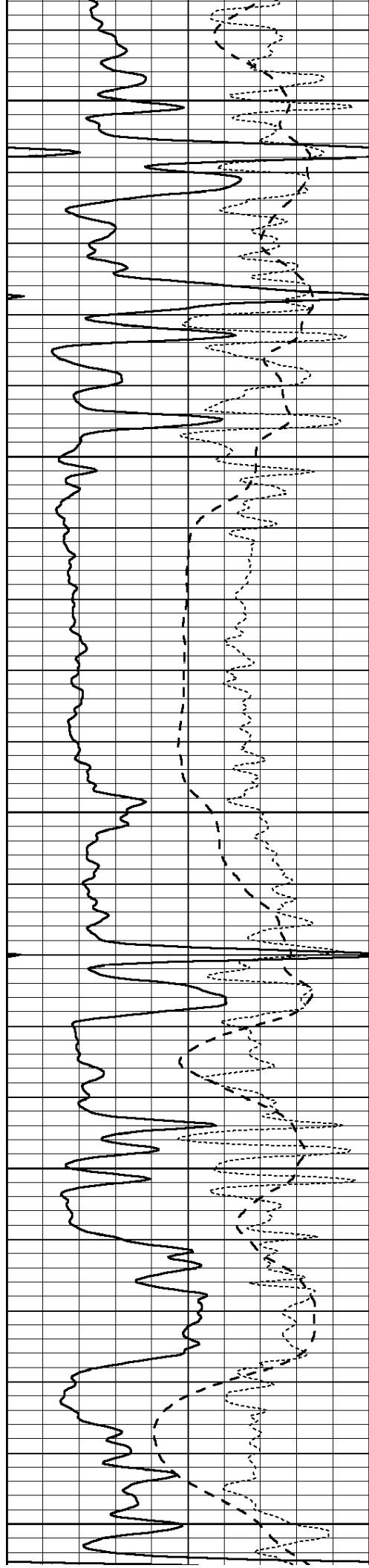
3450

3500

3550

3600





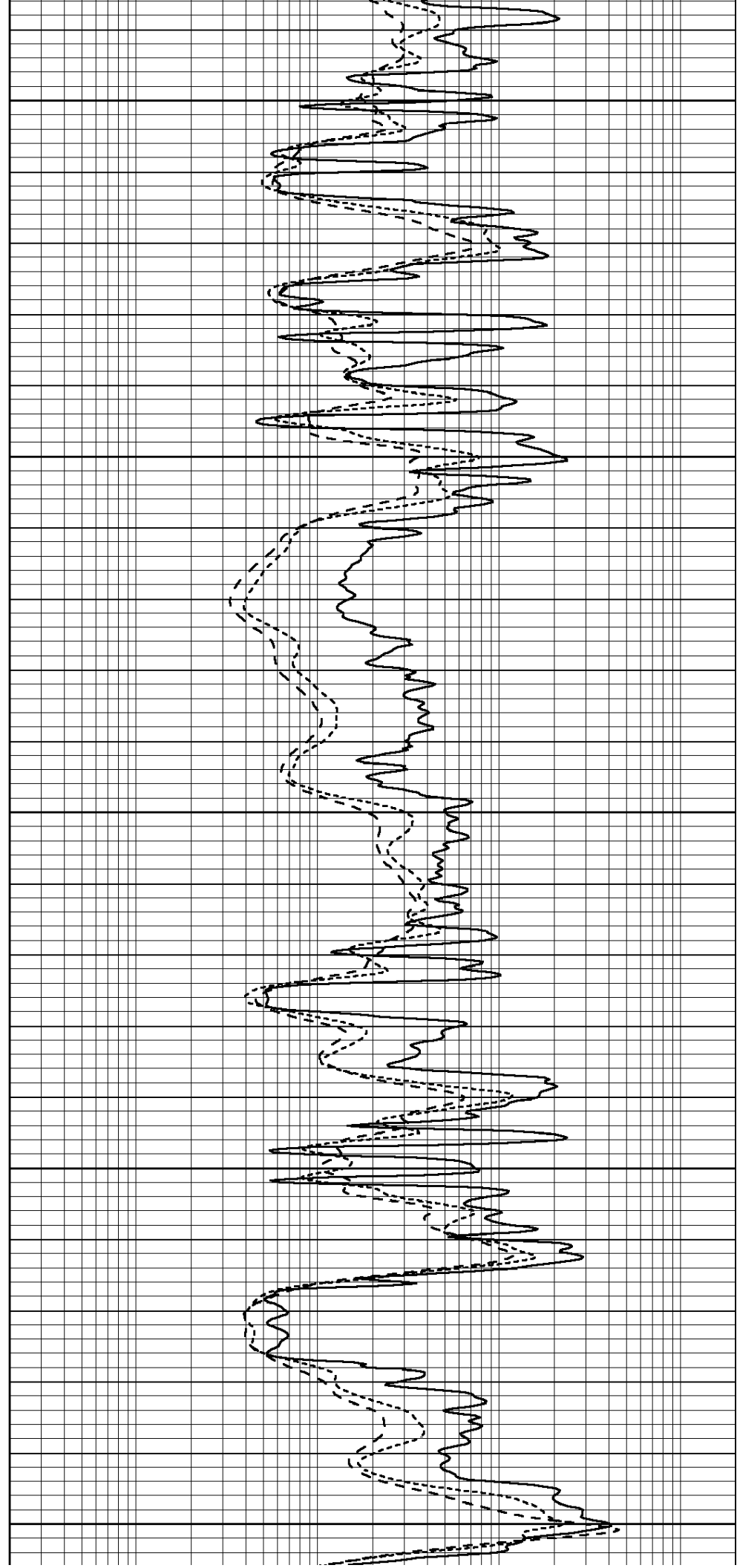
3650

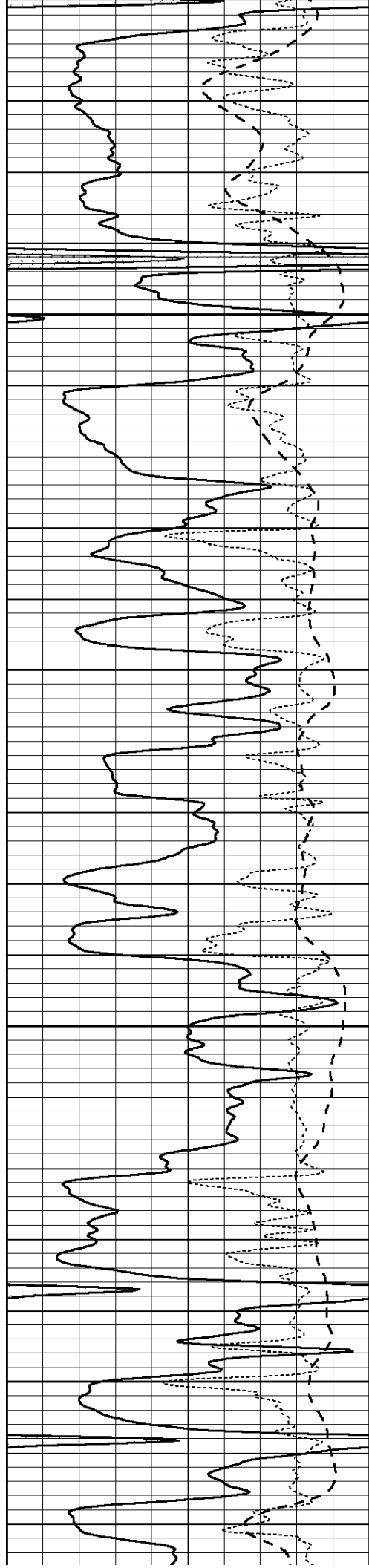
3700

3750

3800

3850



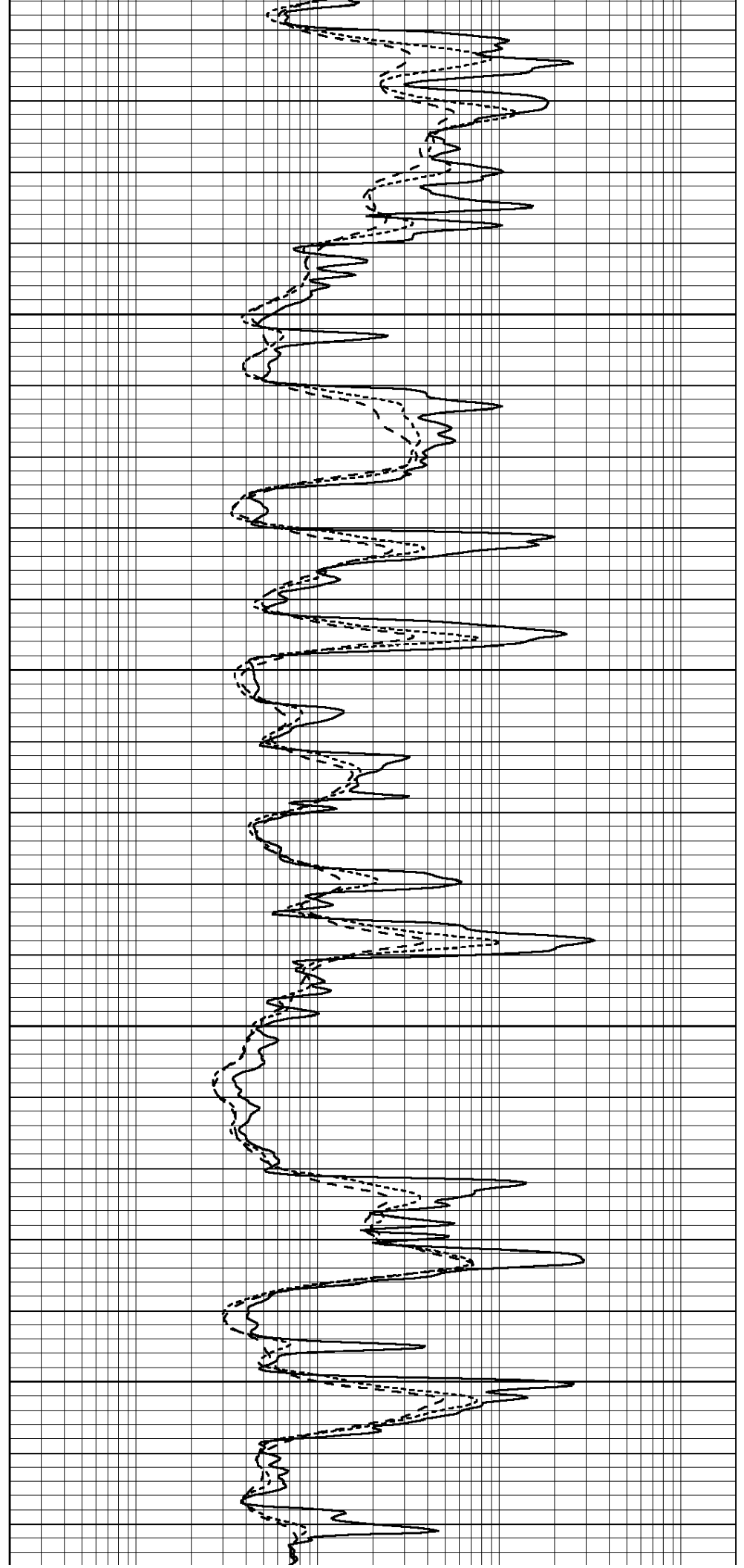


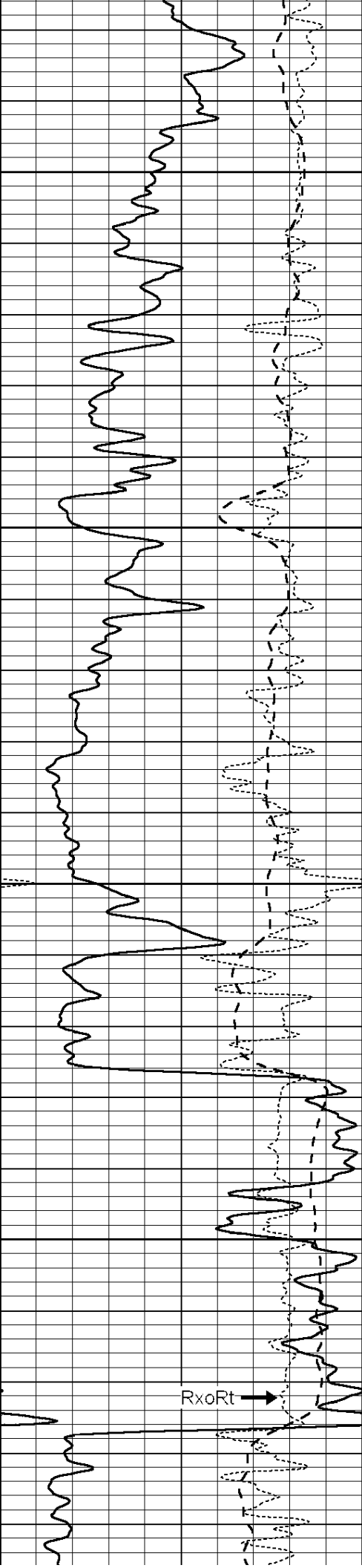
3900

3950

4000

4050



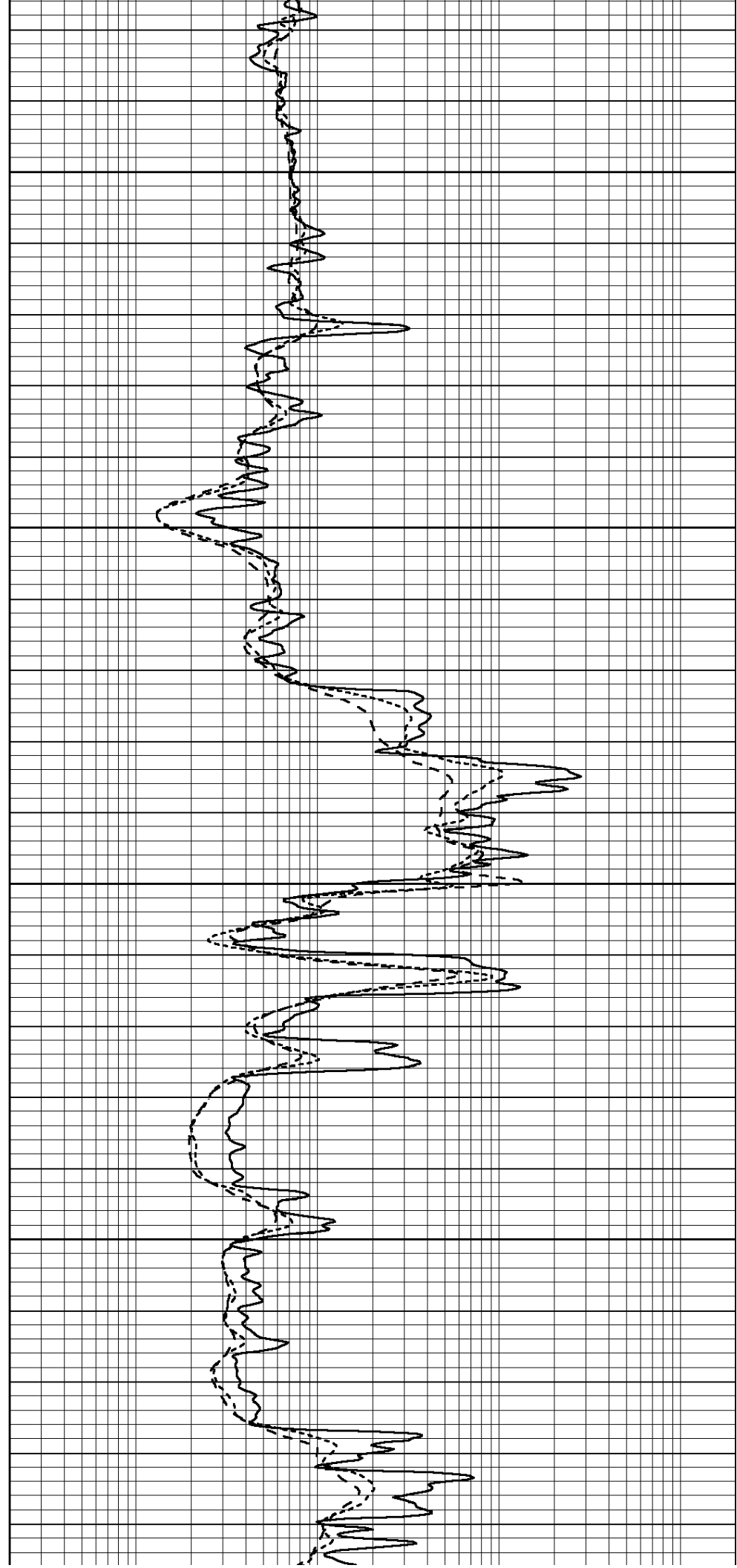


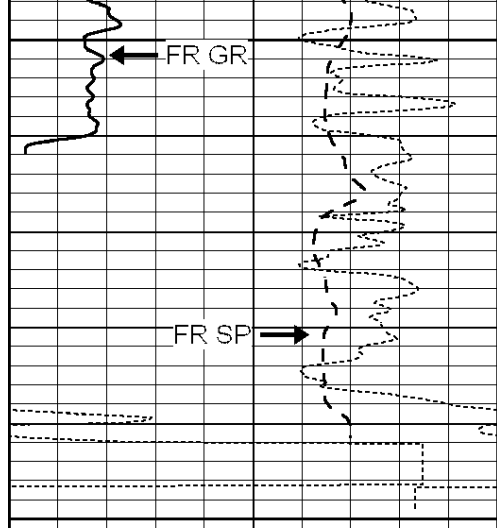
4100

4150

4200

4250



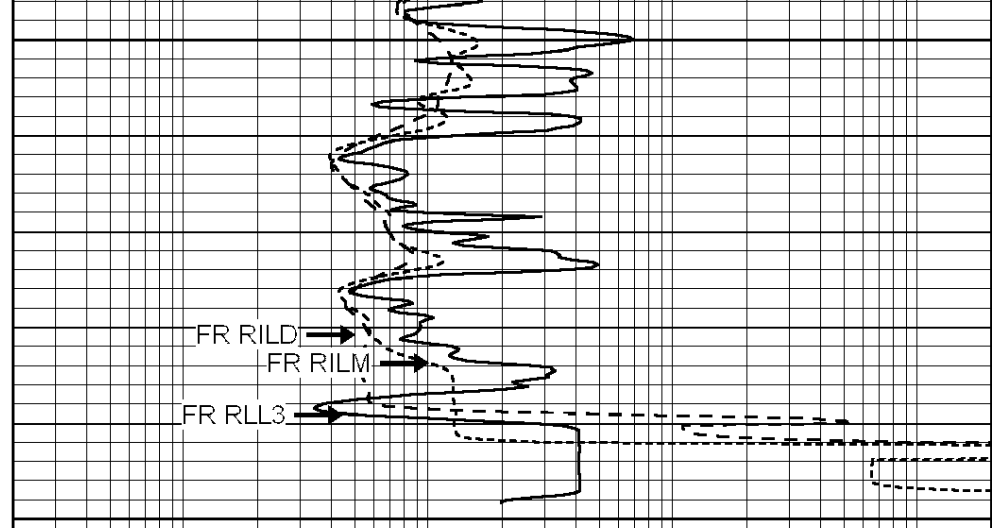


4300

LTD 4341

4350

0	GAMMA RAY (GAPI)	150
-100	SP (mV)	100
-250	Rxo/Rt	50



0.2	SHALLOW GUARD (Ohm-m)	2000
0.2	MEDIUM INDUCTION (Ohm-m)	2000
0.2	DEEP INDUCTION (Ohm-m)	2000

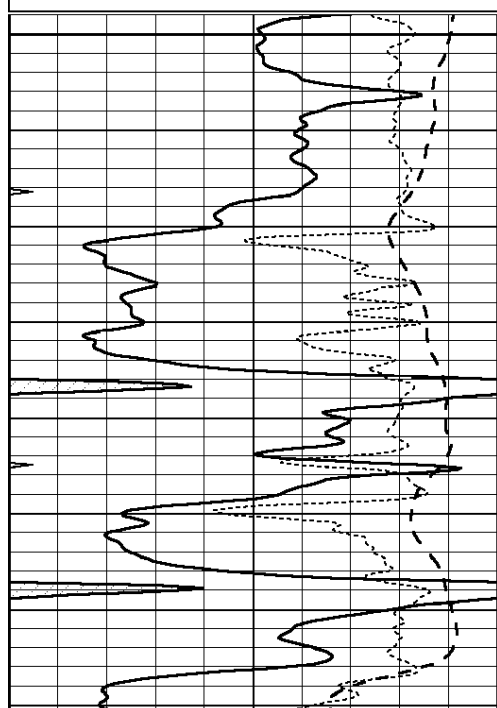


REPEAT SECTION

Database File: 25822ddn.db
 Dataset Pathname: pass2.4
 Presentation Format: _dil
 Dataset Creation: Wed Sep 24 18:09:52 2014 by Calc Open-Cased 090629
 Charted by: Depth in Feet scaled 1:240

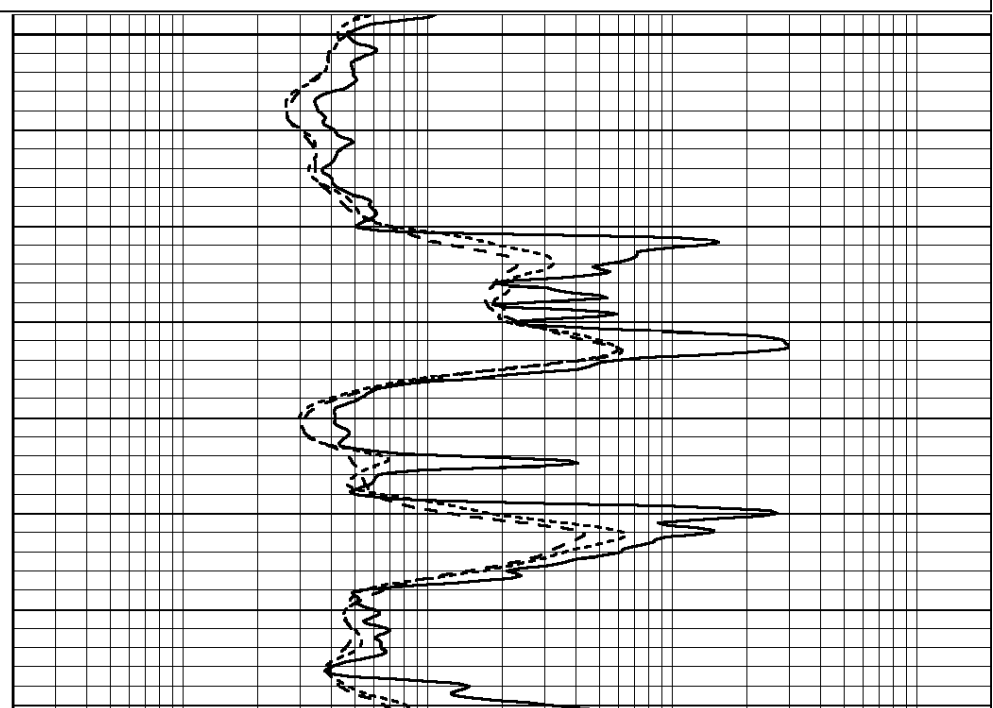
0	GAMMA RAY (GAPI)	150
-100	SP (mV)	100
-250	RxoRt	50
0	MINMK	20

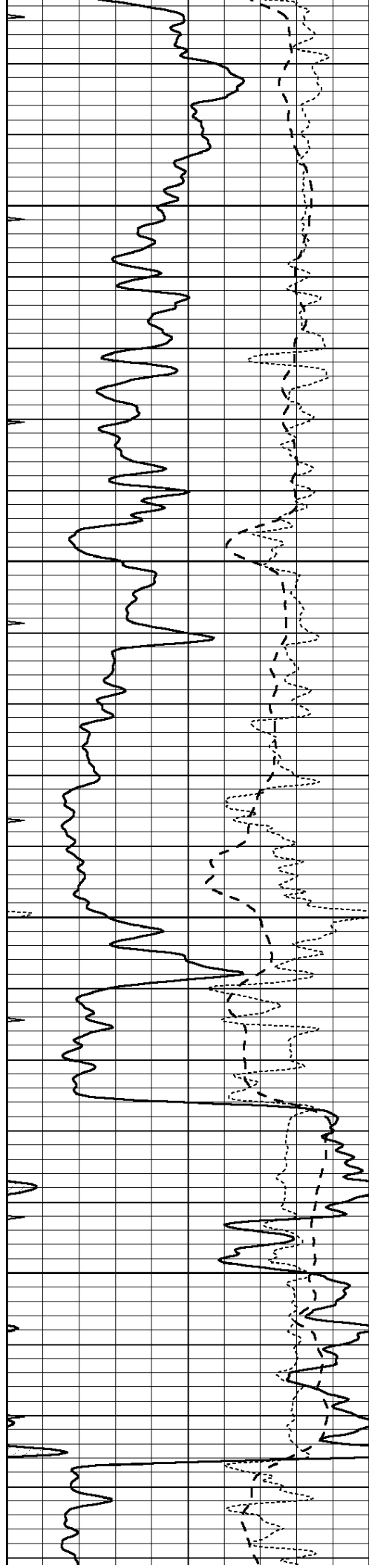
0.2	RLL3 (Ohm-m)	2000
0.2	DEEP INDUCTION (Ohm-m)	2000
0.2	MEDIUM INDUCTION (Ohm-m)	2000



4000

4050



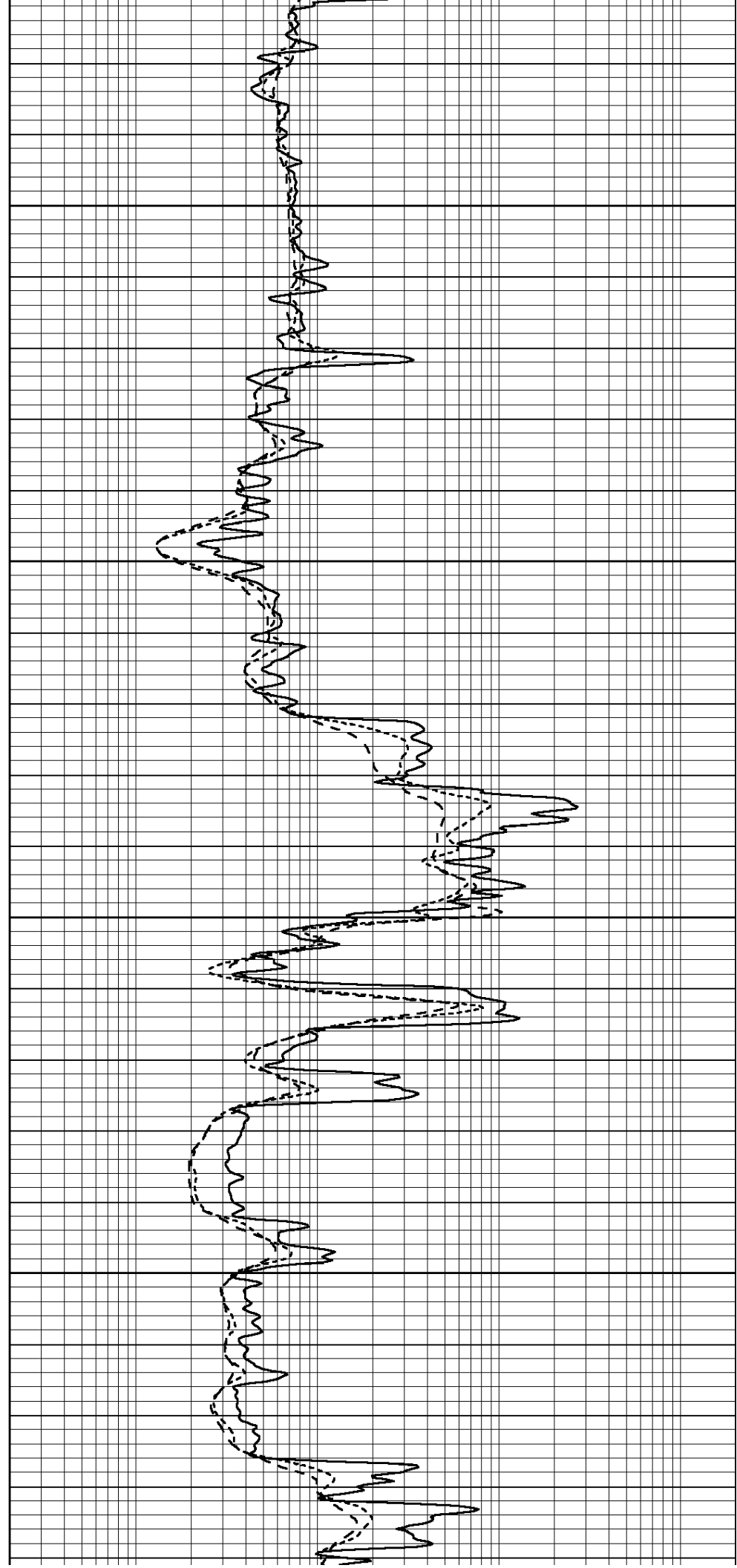


4100

4150

4200

4250



Deep	0.000	0.000	mmho/m	135384.000	27094.500	mmho/m	1.000	0.000
Medium	0.000	0.000	mmho/m	-47330.100	-9381.740	mmho/m	1.000	0.000
LL3		0.000	Ohm-m		1400.000	Ohm-m		
		0.000	Ohm-m		20.000	Ohm-m		
		0.000	mmho-m		4000.000	mmho-m		

Compensated Density Calibration Report

Serial-Model: GEAR5-GEARHART
Source / Verifier: 147 / 147
Master Calibration Performed: Sat Aug 02 01:49:41 2014

Master Calibration

	Density		Far Detector	Near Detector	
Magnesium	1.710	g/cc	943.83	576.01	cps
Aluminum	2.610	g/cc	212.01	399.19	cps
Spine Angle = 76.20			Density/Spine Ratio = 0.585		
	Size		Reading		
Small Ring	8.40	in	1.64	V	
Large Ring	14.00	in	2.93	V	

Compensated Neutron Calibration Report

Serial Number: 080620
Tool Model: Probe

PRE-SURVEY VERIFICATION

Detector	Readings	Measured	Target
Short Space	cps		
Long Space	cps	pu	pu

POST-SURVEY VERIFICATION

Detector	Readings	Measured	Target
Short Space	cps		
Long Space	cps	pu	pu

Gamma Ray Calibration Report

Serial Number: 46001
Tool Model: Probe1
Performed: Fri Sep 12 17:20:19 2014

Calibrator Value: 1.0 GAPI

Background Reading: 0.0 cps
Calibrator Reading: 1.0 cps

Sensitivity: 0.2600 GAPI/cps