



MIDWEST SURVEYS
 LOGGING - PERFORATING - CONSULTING SERVICES
 P.O. Box 66, Oskawatomie, KS 66064
 913.755.2128

GAMMA RAY / NEUTRON / CCL

File No. _____

Company **SCZ Resources, LLC.**

Well **Kendall Dice No. D-51**

Field **Humbolt - Chanute**

County **Allen** State **Kansas**

Location **495' FNL & 495' FWL**

Sec. **27** Twp. **26s** Rge. **18e**

Permit/Datum **SE-NW-NW-NW**

Log Measured From **GL**

Drilling Measured From **GL**

Elevation **NA**

KB NA

D.F. NA

GL NA

Date **08-14-2014**

Run Number **One**

Depth Driller **870.0**

Depth Logger **851.5**

Bottom Logged Interval **850.5**

Top Log Interval **20.0**

Fluid Level **Full**

Type Fluid **Water**

Density / Viscosity **NA**

Salinity - PPM Cl **NA**

Max Recorded Temp **NA**

Estimated Cement Top **NA**

Equipment No. **0.0**

Location **Oskawatomie**

Recorded By **Gary Winkisch**

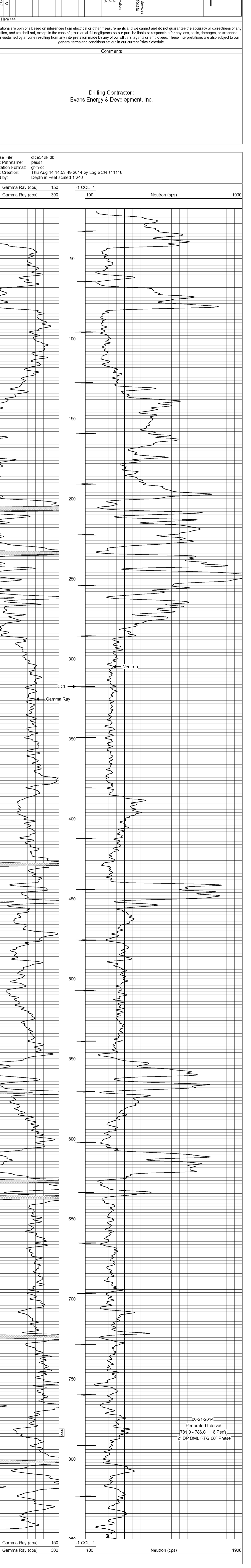
Witnessed By **Jorge Ranz**

Witnessed By **Jorge Ranz**

BOREHOLE RECORD		CASING RECORD				
RUN No.	BIT FROM	TO	SIZE	WGT.	FROM	TO
One	9.875"	0.0	7.00"	17.0#	0.0	20.7
Two	5.825"	20.7	870.0	2.875"	6.5 #	0.0
						859.3

<<< Fold Here >>>

All interpretations are opinions based on inferences from electrical or other measurements and we cannot and do not guarantee the accuracy or correctness of any interpretation, and we shall not, except in the case of gross or willful negligence on our part, be liable or responsible for any loss, costs, damages, or expenses incurred or sustained by anyone resulting from any interpretation made by any of our officers, agents or employees. These interpretations are also subject to our general terms and conditions set out in our current Price Schedule.



BOREHOLE RECORD		CASING RECORD				
RUN No.	BIT FROM	TO	SIZE	WGT.	FROM	TO
One	9.875"	0.0	7.00"	17.0#	0.0	20.7
Two	5.825"	20.7	870.0	2.875"	6.5 #	0.0
						859.3

<<< Fold Here >>>

08-21-2014
 Perforated Interval
 781.0 - 786.0 16 Perfs.
 2" DP DML RTG 60° Phase

Drilling Contractor :
 Evans Energy & Development, Inc.

Database File: dice51dk.db
 Dataset Pathname: pass1
 Presentation Format: gr-n-ccl
 Dataset Creation: Thu Aug 14 14:53:49 2014 by Log SCH 111116
 Charted by: Depth in Feet scaled 1:240