



MIDWEST SURVEYS
 LOGGING - PERFORATING - CONSULTING SERVICES
 P.O. Box 68, Osawatomie, KS 66064
 913 / 755 - 2128

GAMMA RAY / NEUTRON / CCL

File No.

Company Peoples Oil, LLC
 Well Eggleston No. P-3
 Field Paola - Rantoul
 County Franklin State Kansas

Location 2998' FSL & 3150' FEL
 NW-SE-SE-NW

Location 2998' FSL & 3150' FEL
 NW-SE-SE-NW

Location 2998' FSL & 3150' FEL
 NW-SE-SE-NW

Sec 3 Twp 17S Rge 21E
 Permanent Datum GL Elevation 935'
 Log Measured From GL
 Drilling Measured From GL

Other Services Perforate
 Elevation
 K.B. NA
 D.F. NA
 G.L. 935'

Date

12-31-2014

Run Number

One

Depth Driller

640.0

Depth Logger

624.5

Bottom Logged Interval

623.5

Top Log Interval

20.0

Fluid Level

Full

Type Fluid Water
 Density / Viscosity NA
 Salinity - PPM Cl NA
 Max Recorded Temp NA
 Estimated Cement Top 0.0
 Equipment No. Location 107 Osawatomie
 Recorded By Steve Winkisch
 Witnessed By Andy Peoples

BORE-HOLE RECORD				CASING RECORD			
NO.	BIT	FROM	TO	SIZE	WGT.	FROM	TO
One	9.875"	0.0	20.0	7.00"	17.0#	0.0	20.0
Two	5.675"	20.0	640.0	2.875"	6.5#	0.0	630.0

<<< Fold Here >>>

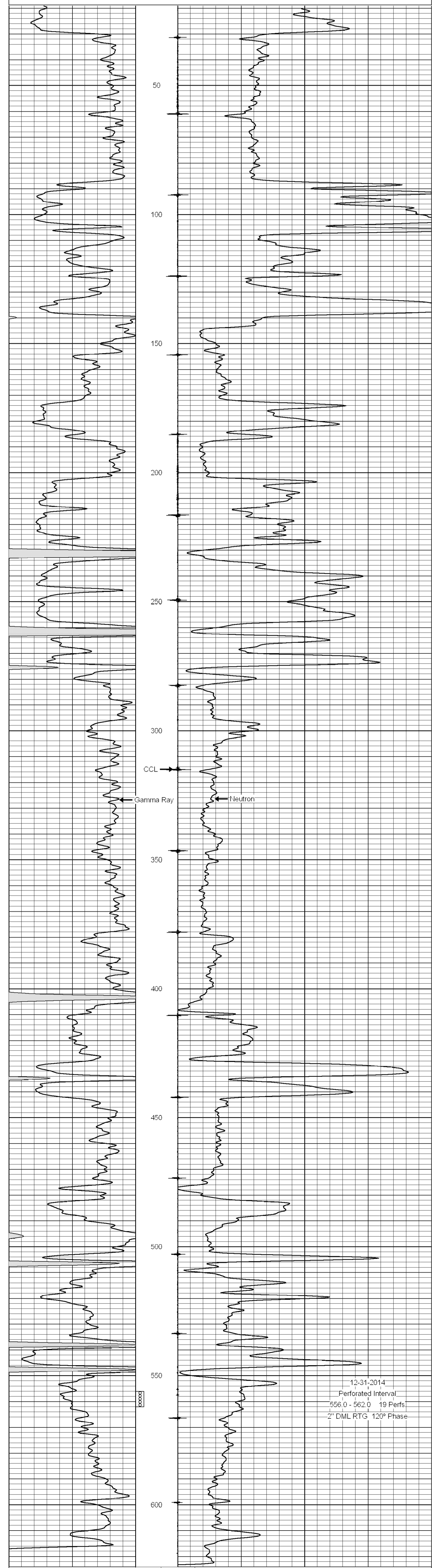
All interpretations are opinions based on inferences from electrical or other measurements and we cannot and do not guarantee the accuracy or correctness of any interpretation, and we shall not, except in the case of gross or willful negligence on our part, be liable or responsible for any loss, costs, damages, or expenses incurred or sustained by anyone resulting from any interpretation made by any of our officers, agents or employees. These interpretations are also subject to our general terms and conditions set out in our current Price Schedule.

Comments

Drilling Contractor :
 JTC Oil, Inc.

Database File: eggleston 3p.db
 Dataset Pathname: pass1
 Presentation Format: gr-n-ccl
 Dataset Creation: Wed Dec 31 11:59:46 2014 by Log SCH 111116
 Charted by: Depth in Feet scaled 1:240

0	Gamma Ray (cps)	150	-1 CCL 1	10	Neutron (cps)	2100
150	Gamma Ray (cps)	300				



0	Gamma Ray (cps)	150	-1 CCL 1	10	Neutron (cps)	2100
150	Gamma Ray (cps)	300				