



Pioneer Energy Services

Dual Induction Log

15-051-26,730-00-00

API No.

Company **Gore Oil Company**

Well **Kingsley #5**

Field **Spring Brook**

County **Ellis** State

Kansas

Location

2150' FSL & 1100' FEL

Other Services
CNL/CDL
MEL

Sec: **17**

Twp: **14S**

Rge: **20W**

Elevation

K.B. 2168
D.F. 2162
G.L. 2162

Permanent Datum **Ground Level**

Elevation **2162**

Log Measured From **Kelly Bushing**

6 Ft. Above Perm. Datum

Drilling Measured From **Kelly Bushing**

10/29/2014

One

Run Number **3900**

Depth Driller **3902**

Bottom Logged Interval **3901**

Top Log Interval **250**

Casing Driller **8.625 @ 266**

Casing Logger **263**

Bit Size **7.875**

Type Fluid in Hole **Chemical**

Salinity, ppm CL **5.000**

Density / Viscosity **9.2 48**

pH / Fluid Loss **9.0 9.2**

Source of Sample **Flowline**

Rm @ Meas. Temp **.75 @ 58**

Rmf @ Meas. Temp **.56 @ 58**

Rmc @ Meas. Temp **1.01 @ 58**

Source of Rmf / Rmc **Charts**

Rm @ BHT **.38 @ 115**

Operating Rig Time **4 Hours**

Max Rec. Temp. F **115**

Equipment Number **10**

Location **Hays**

Recorded By **C. Desaire**

Witnessed By **Chuck Schmalz**

<<< Fold Here >>>

All interpretations are opinions based on inferences from electrical or other measurements and we cannot and do not guarantee the accuracy or correctness of any interpretation, and we shall not, except in the case of gross or willful negligence on our part, be liable or responsible for any loss, costs, damages, or expenses incurred or sustained by anyone resulting from any interpretation made by any of our officers, agents or employees. These interpretations are also subject to our general terms and conditions set out in our current Price Schedule.

Comments

Thank you for using Pioneer Energy Services
www.pioneeres.com
785 625 3858

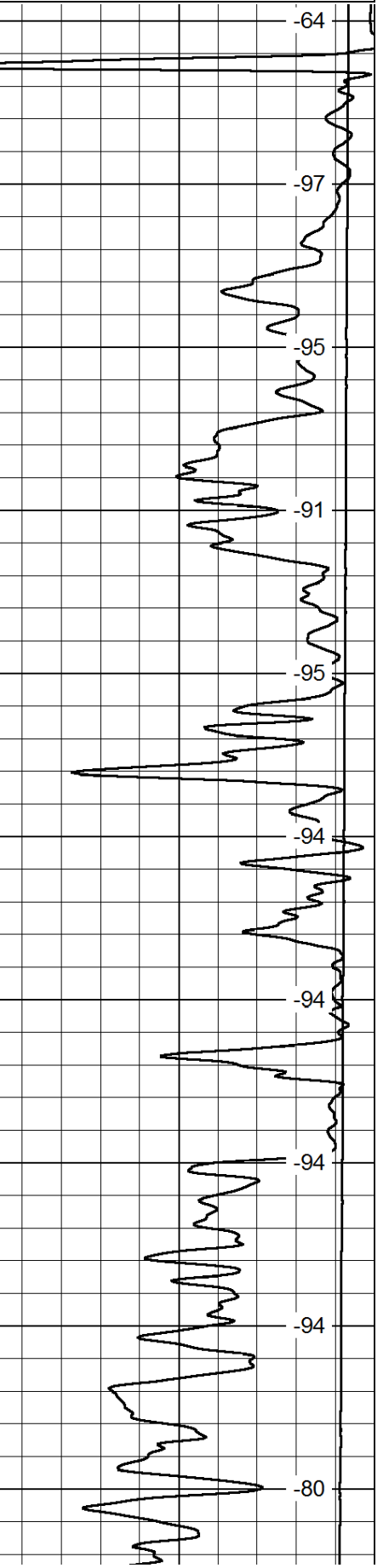
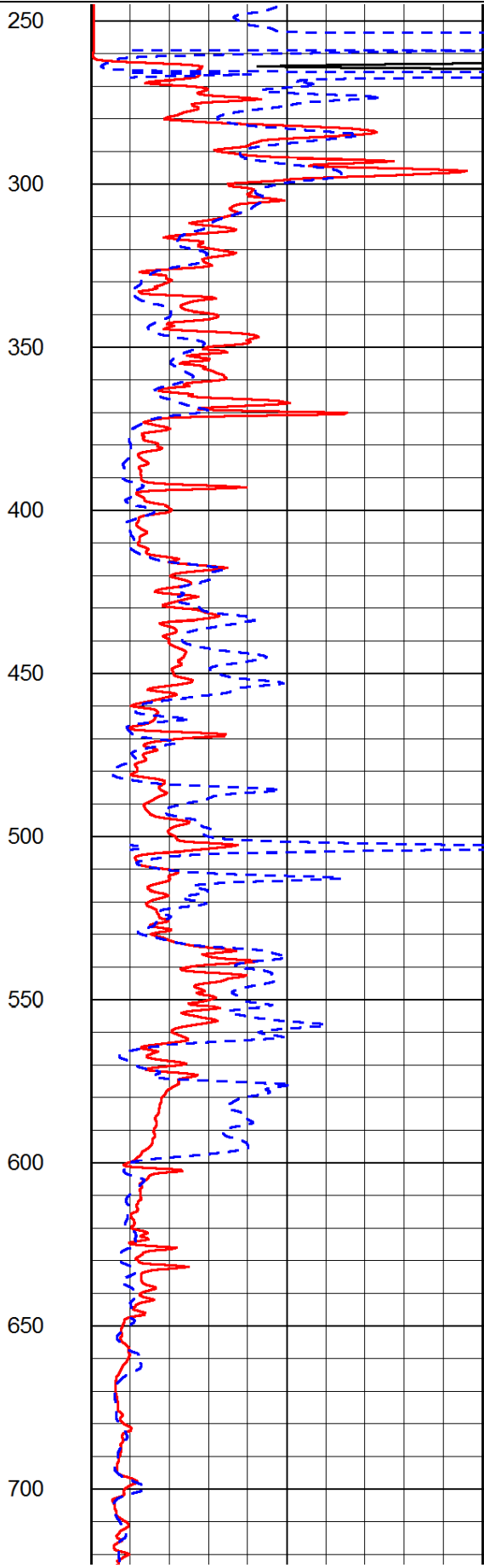
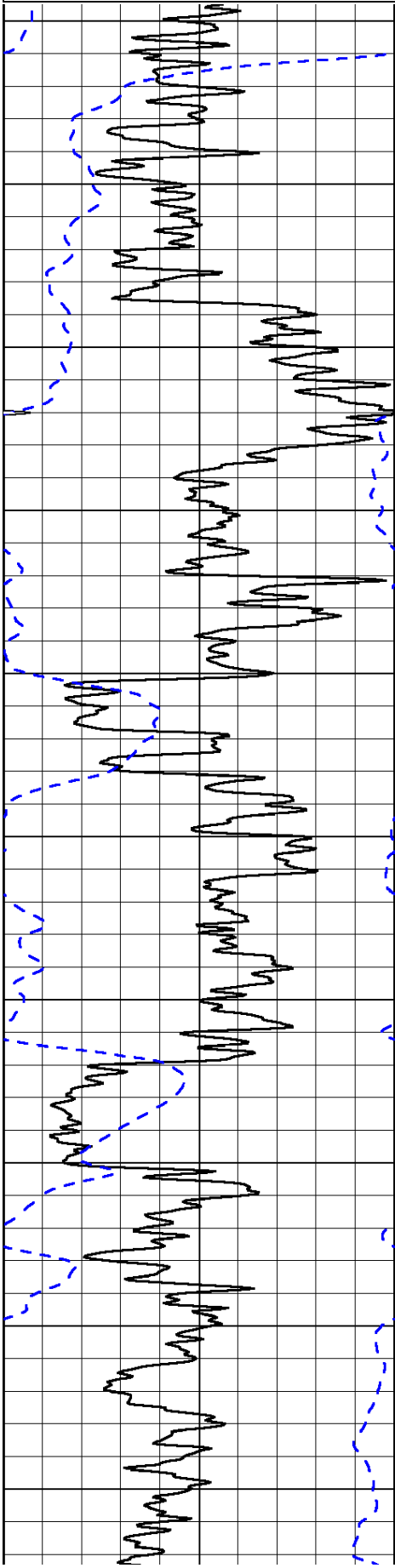
Ellis KS, from I-70 go 8 1/4 S, W Into

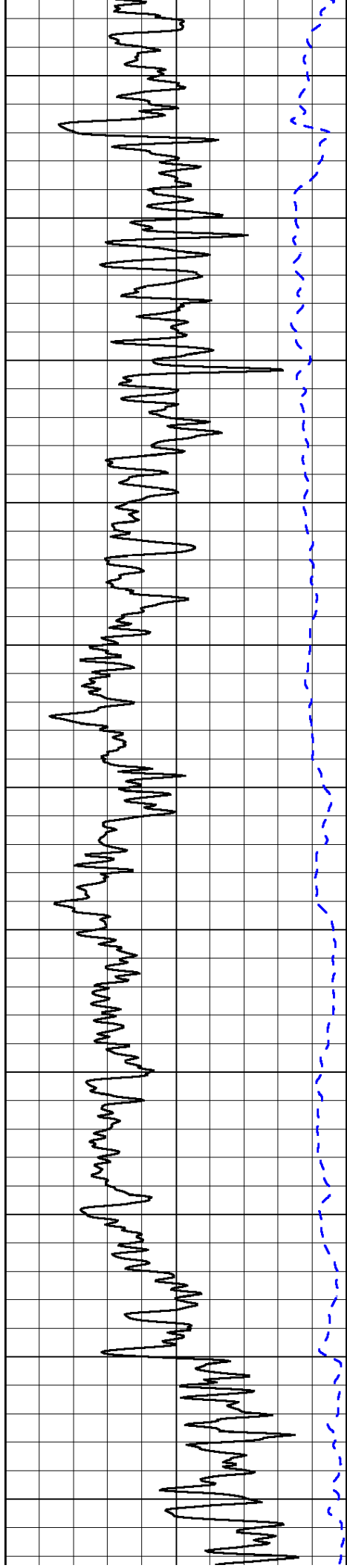
Database File: c:\warrior\data\gore_kingsley #5\gorehd.db
Dataset Pathname: dil\gorestk
Presentation Format: dil2in
Dataset Creation: Wed Oct 29 08:24:43 2014
Charted by: Depth in Feet scaled 1:600

0	Gamma Ray	150
-200	SP (mV)	0

0	Shallow Resistivity	50
0	Deep Resistivity	50
1000	Conductivity	0
15000	Line Tension	0
50	Shallow Resistivity	500
50	Deep Resistivity	500

LSPD





750

800

850

900

950

1000

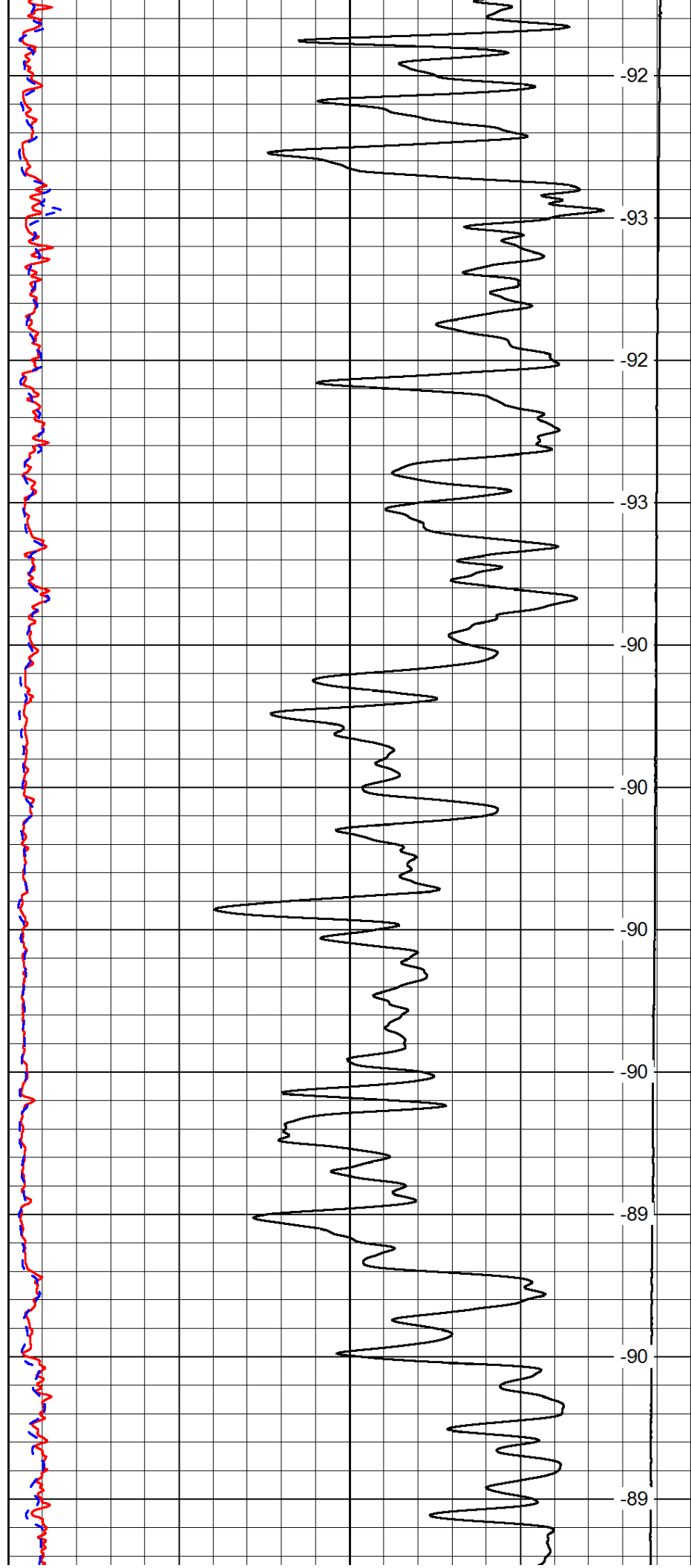
1050

1100

1150

1200

1250



-92

-93

-92

-93

-90

-90

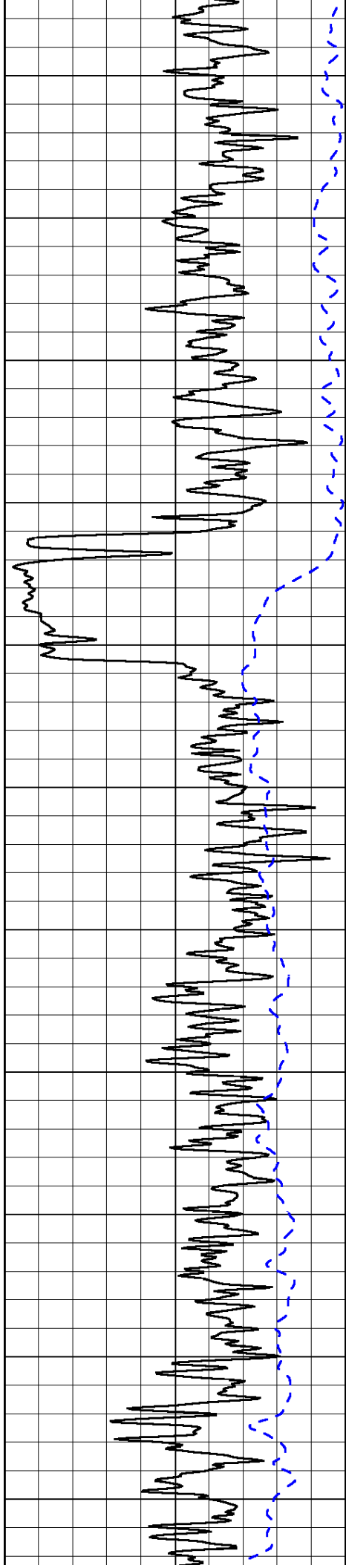
-90

-90

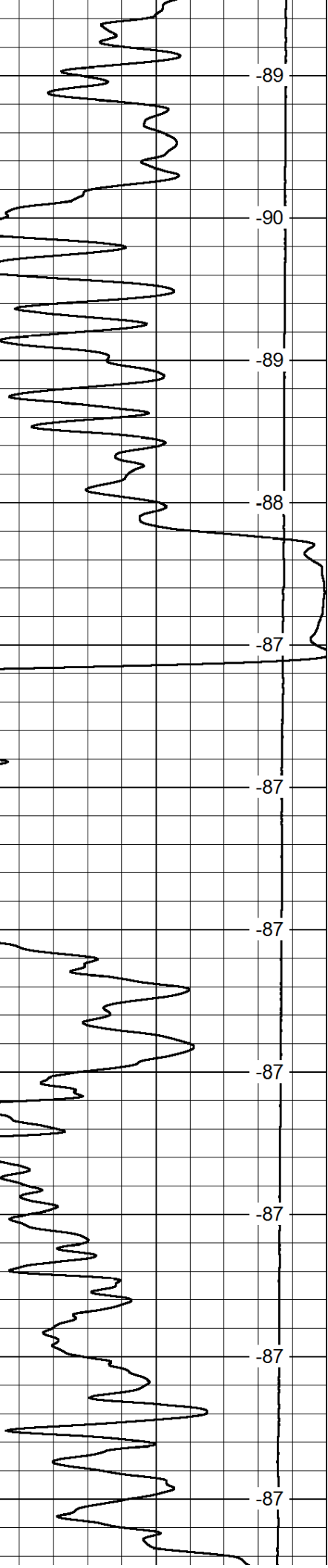
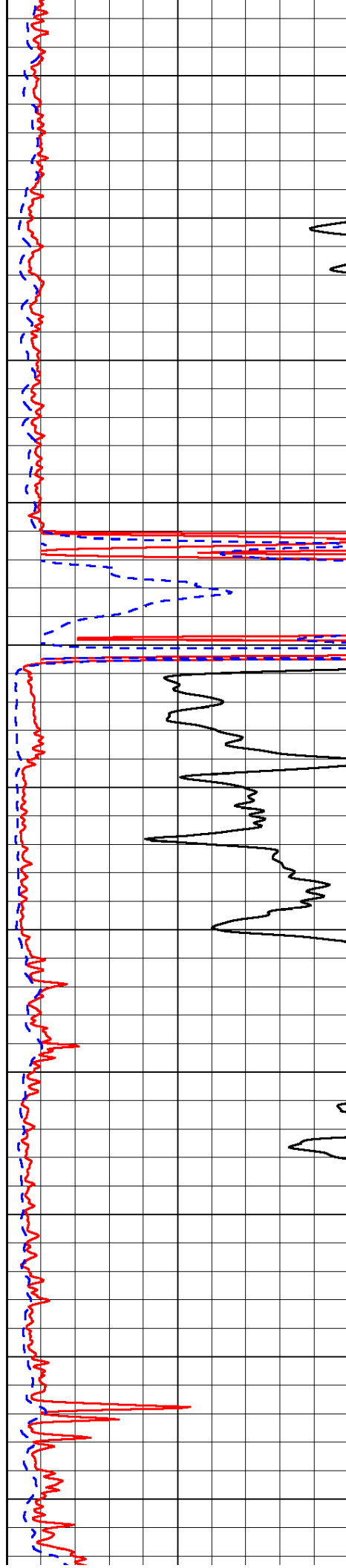
-89

-90

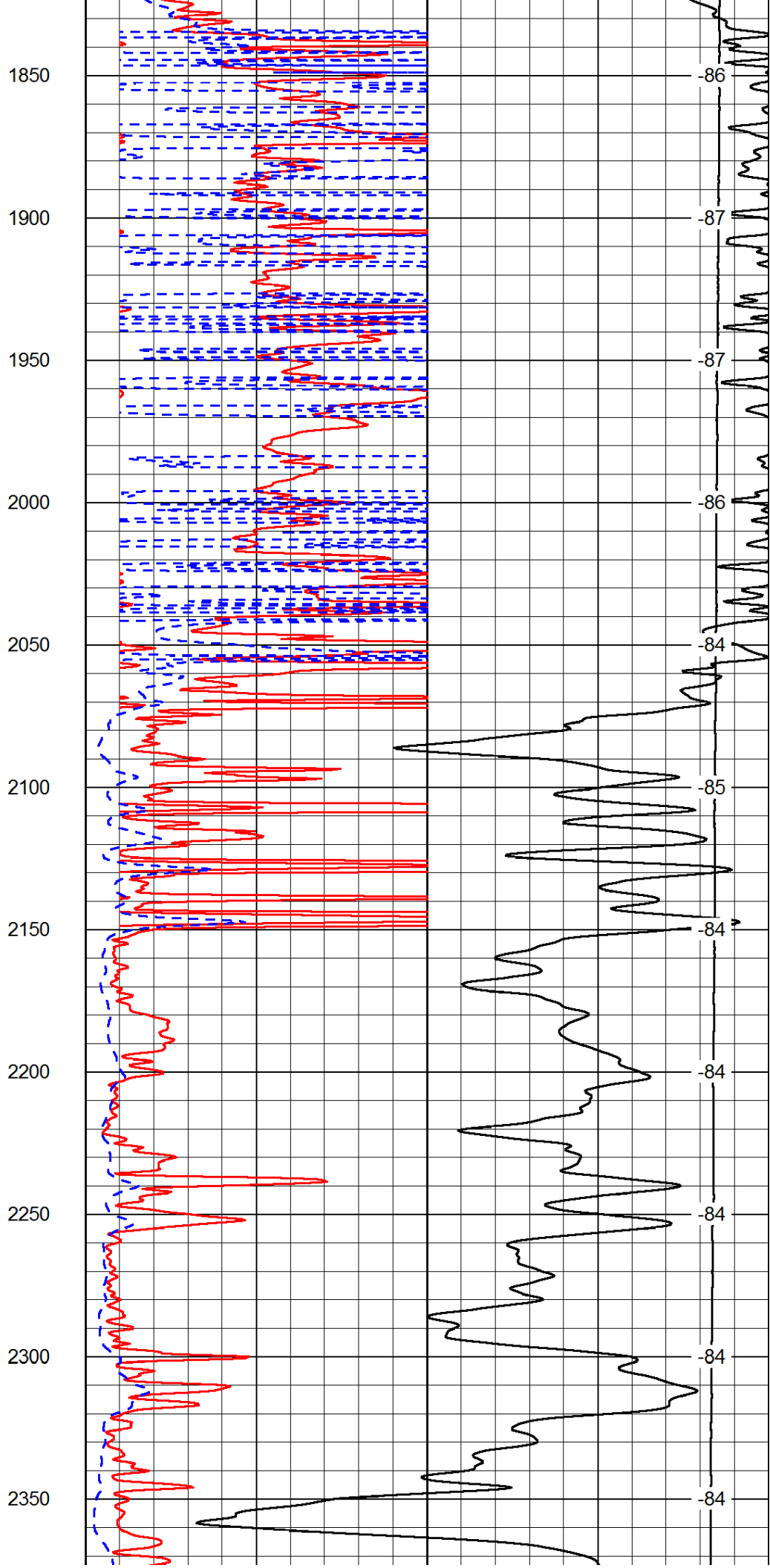
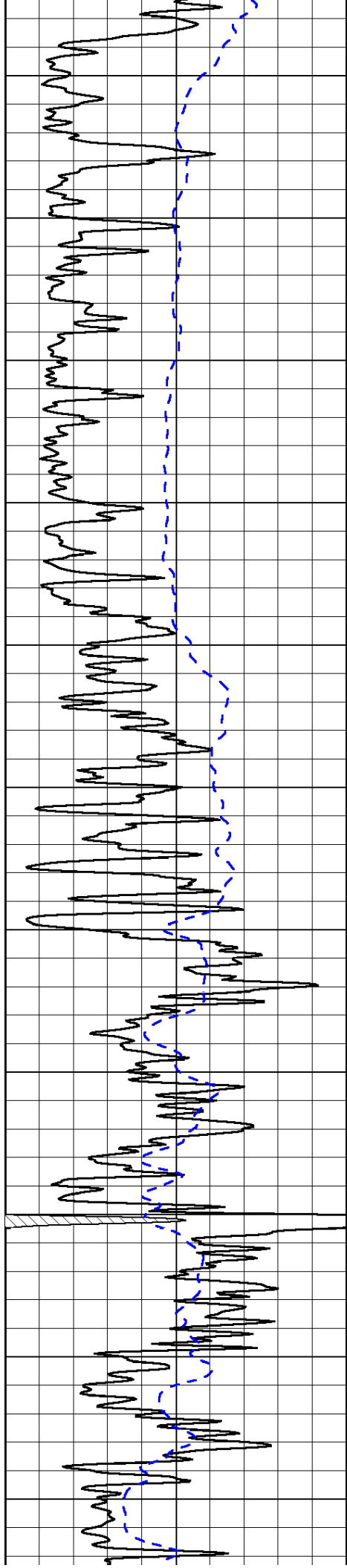
-89

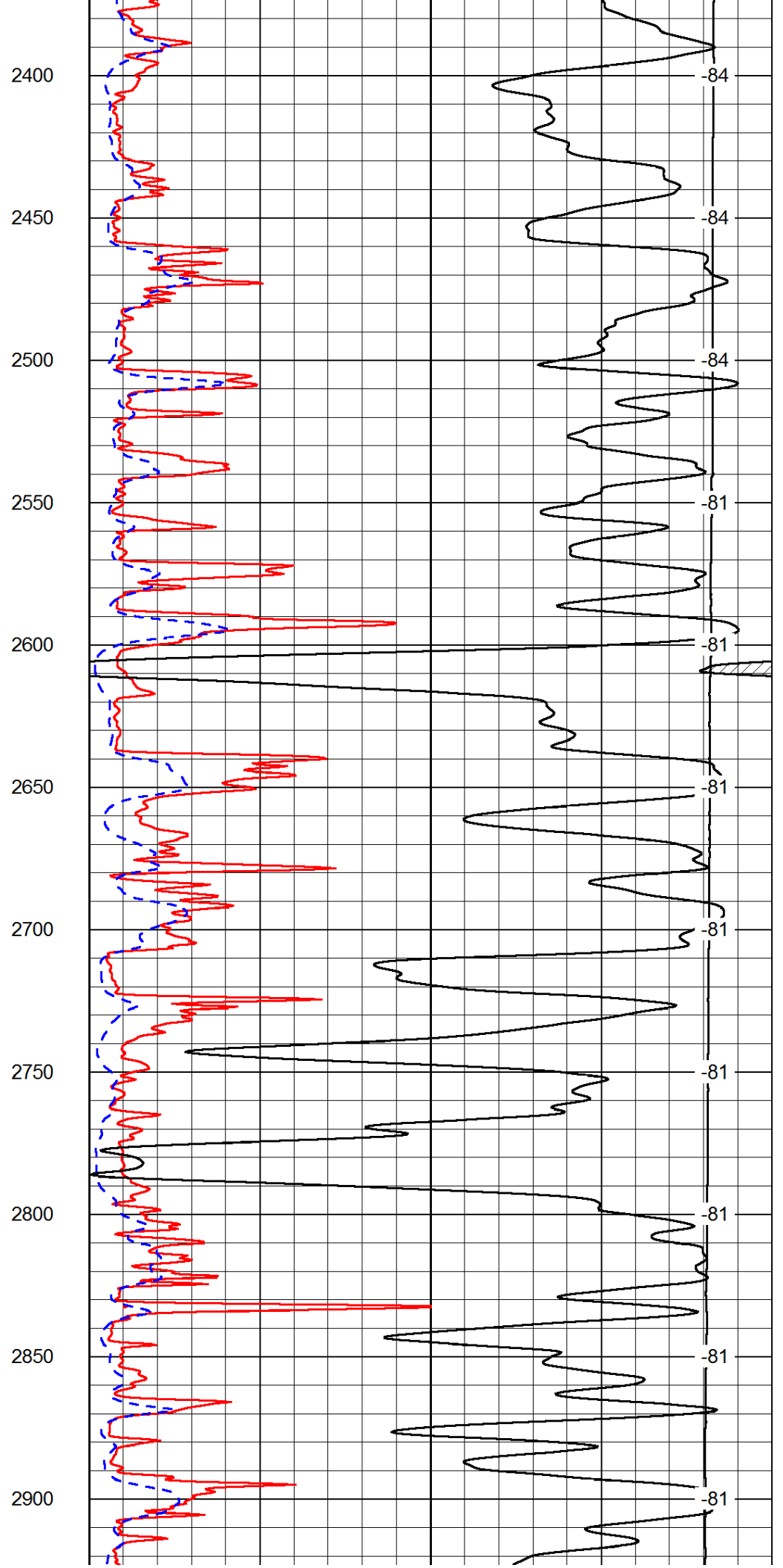
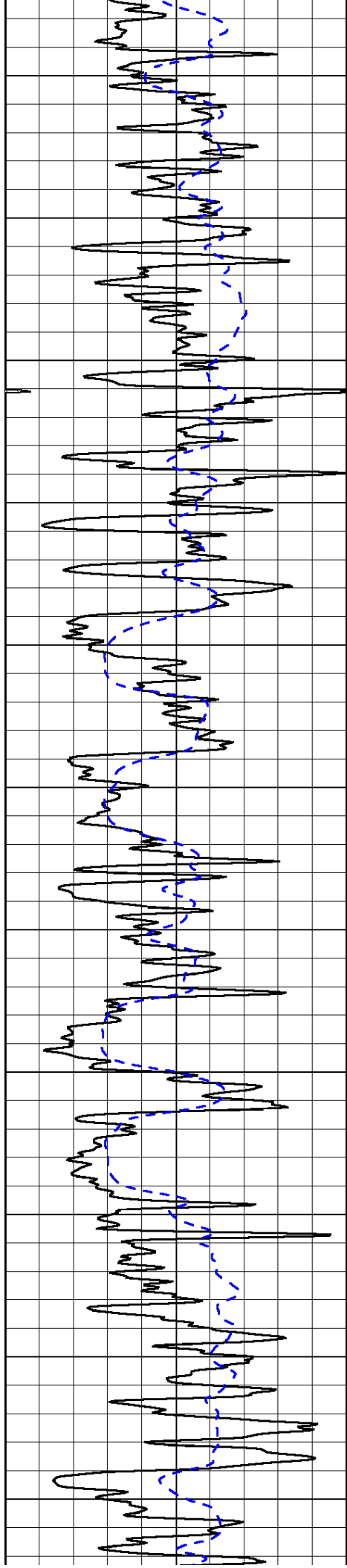


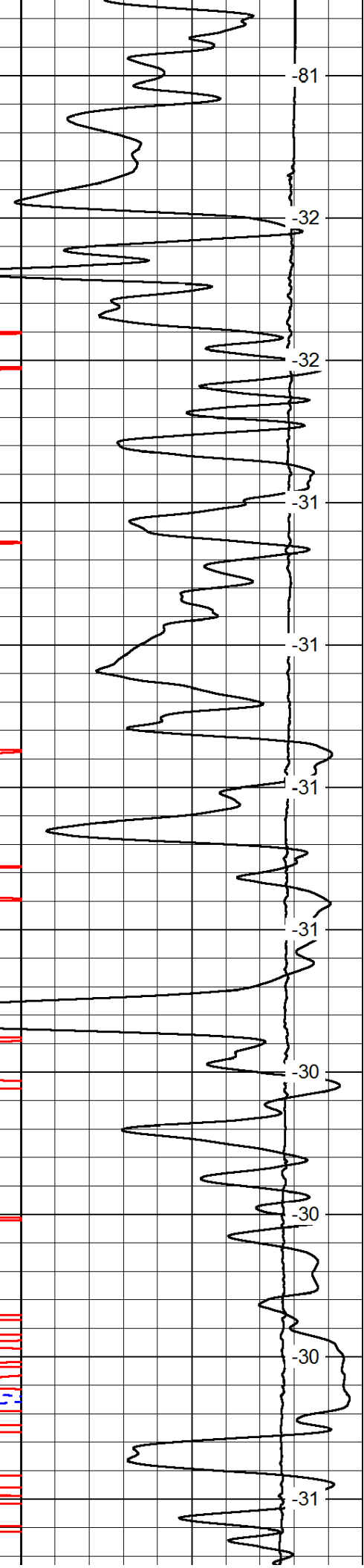
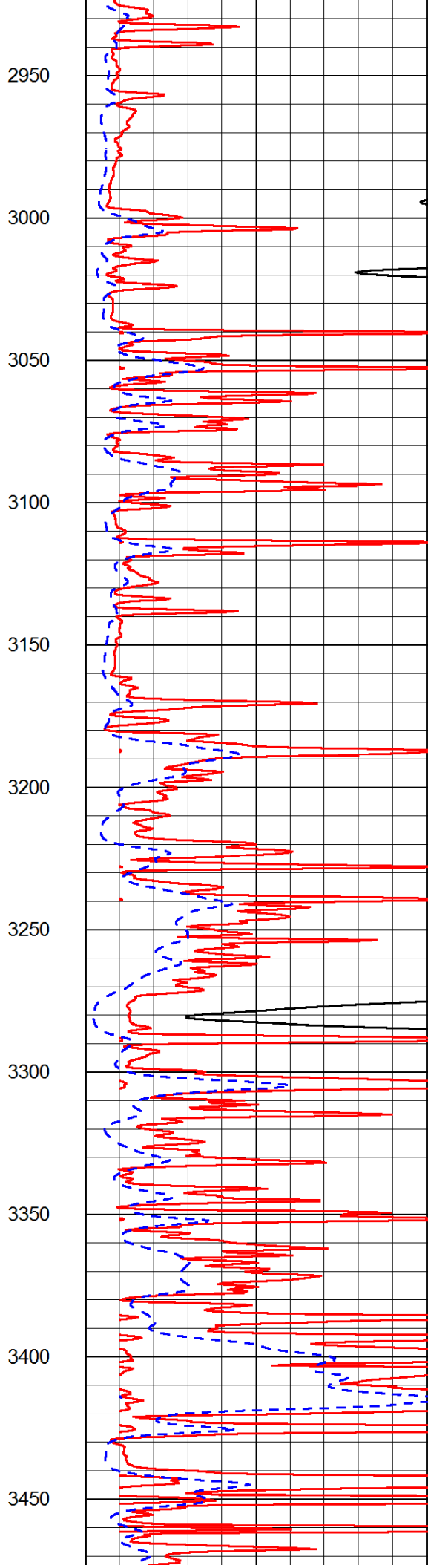
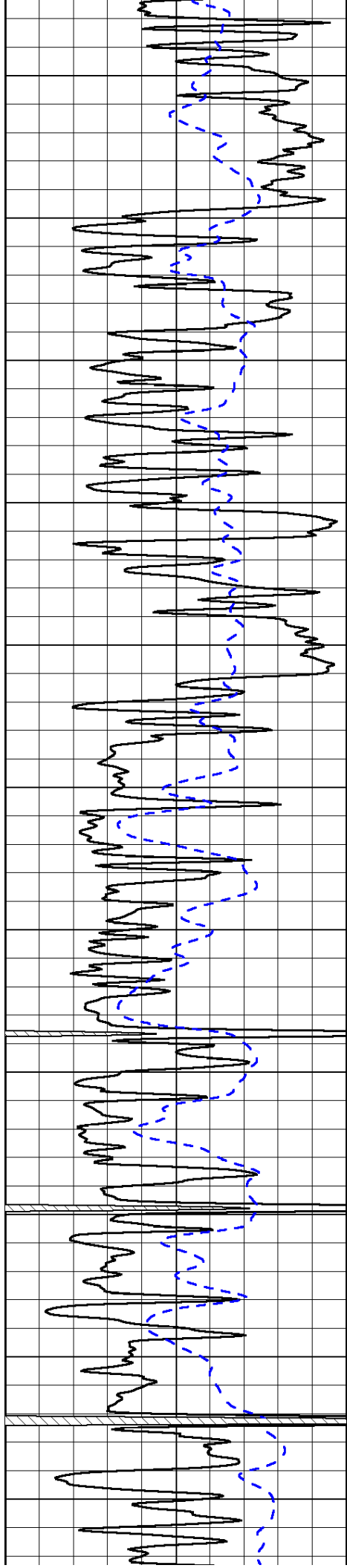
1300
1350
1400
1450
1500
1550
1600
1650
1700
1750
1800

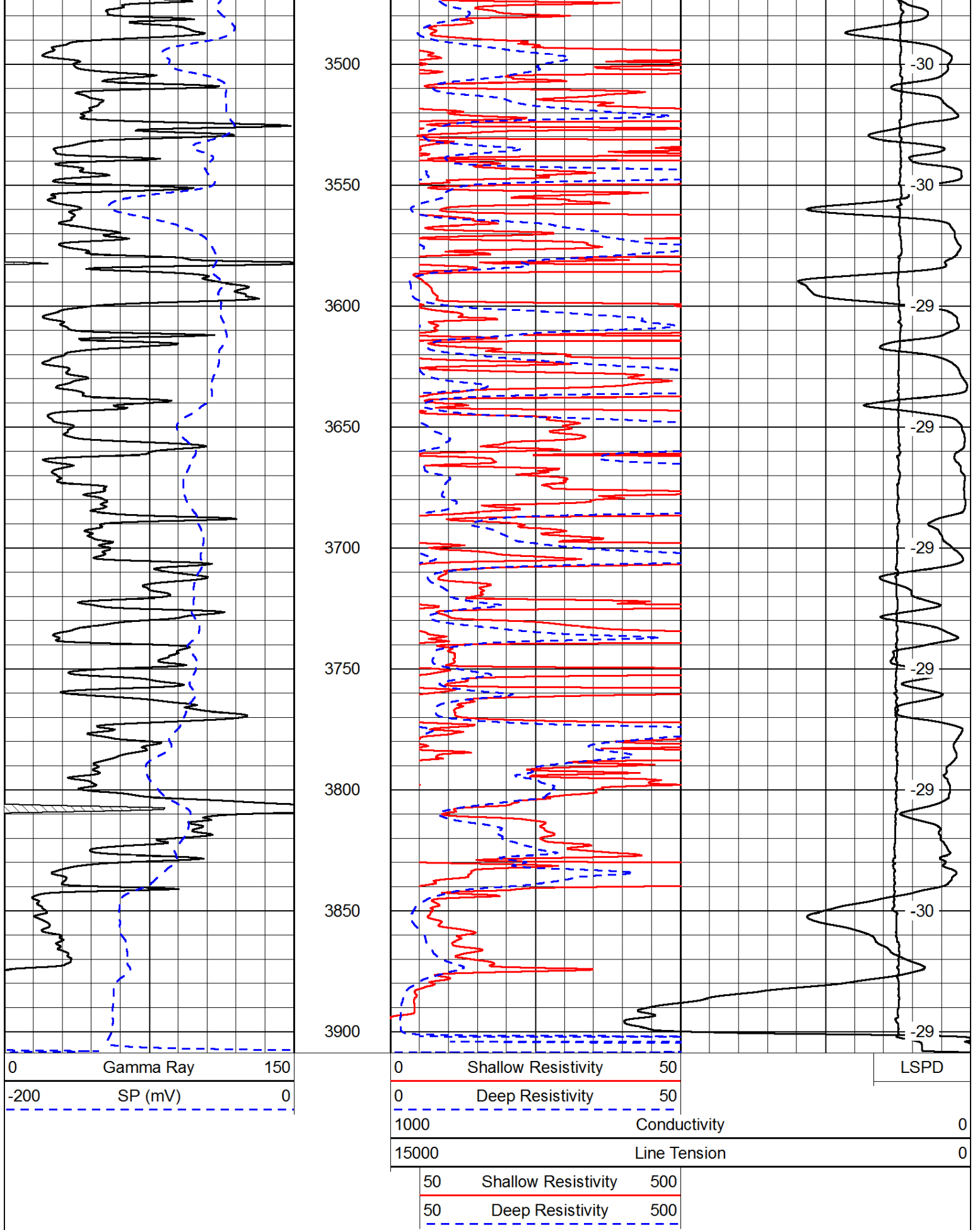


-89
-90
-89
-88
-87
-87
-87
-87
-87
-87
-87



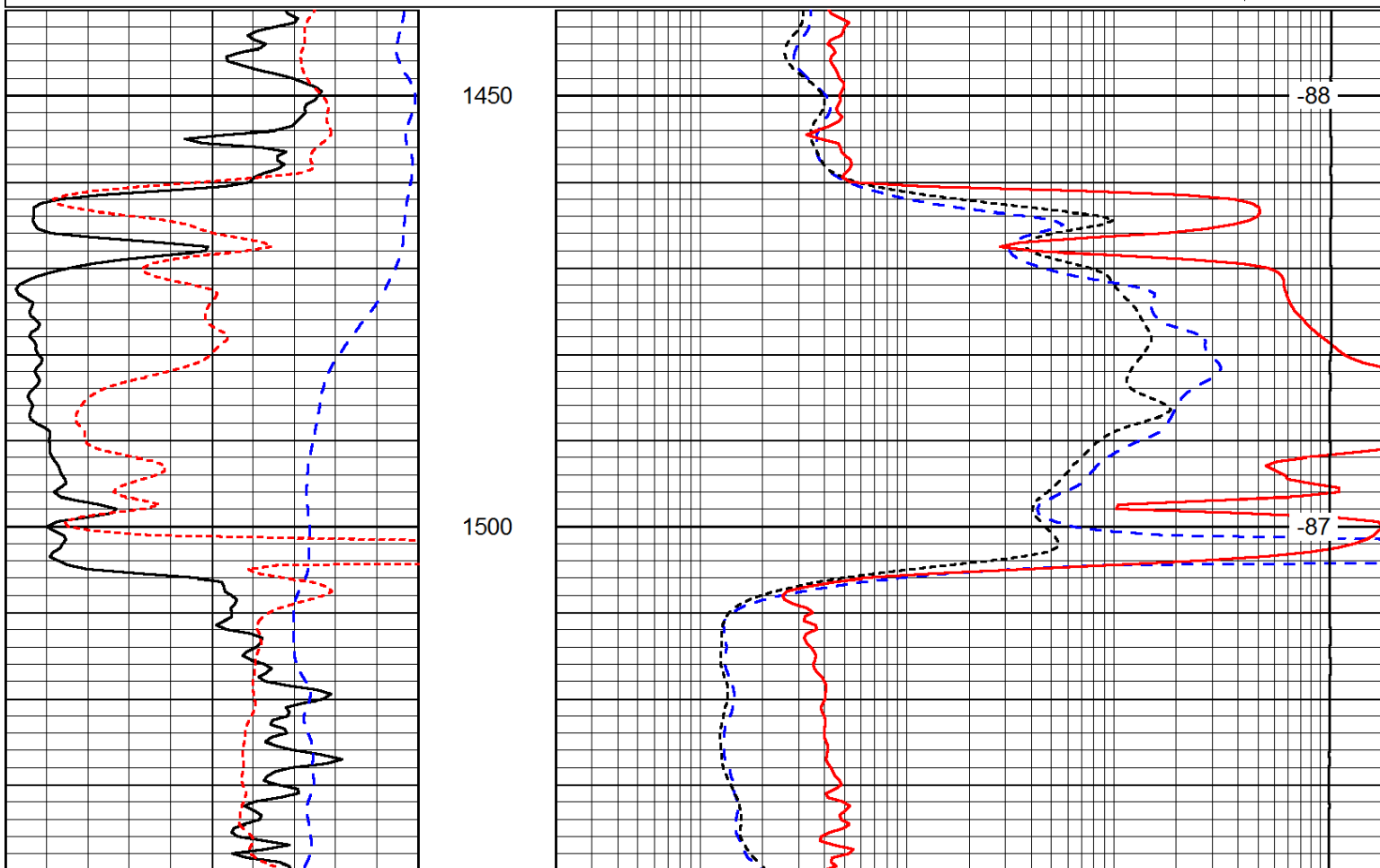






Database File: c:\warrior\data\gore_kingsley #5\gorehd.db
 Dataset Pathname: dil/gorestk
 Presentation Format: dil

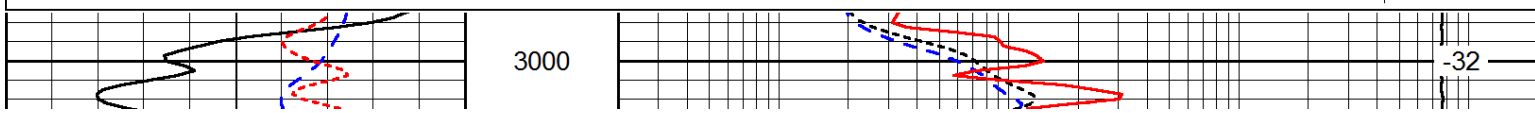
0	Gamma Ray	150	0.2	Deep Resistivity	2000
-200	SP (mV)	0	0.2	Medium Resistivity	2000
-160	RxoRt	40	0.2	Shallow Resistivity	2000
			15000	Line Tension	0
					LSPD

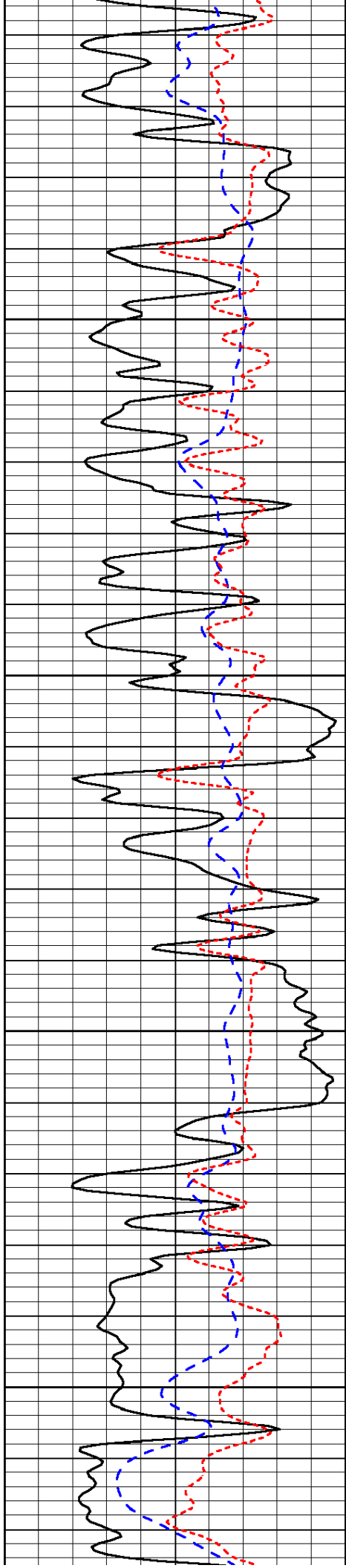


0	Gamma Ray	150	0.2	Deep Resistivity	2000
-200	SP (mV)	0	0.2	Medium Resistivity	2000
-160	RxoRt	40	0.2	Shallow Resistivity	2000
			15000	Line Tension	0
					LSPD

Database File: c:\warrior\data\gore_kingsley #5\gorehd.db
 Dataset Pathname: dil/gorestk
 Presentation Format: dil
 Dataset Creation: Wed Oct 29 08:24:43 2014
 Charted by: Depth in Feet scaled 1:240

0	Gamma Ray	150	0.2	Deep Resistivity	2000
-200	SP (mV)	0	0.2	Medium Resistivity	2000
-160	RxoRt	40	0.2	Shallow Resistivity	2000
			15000	Line Tension	0
					LSPD



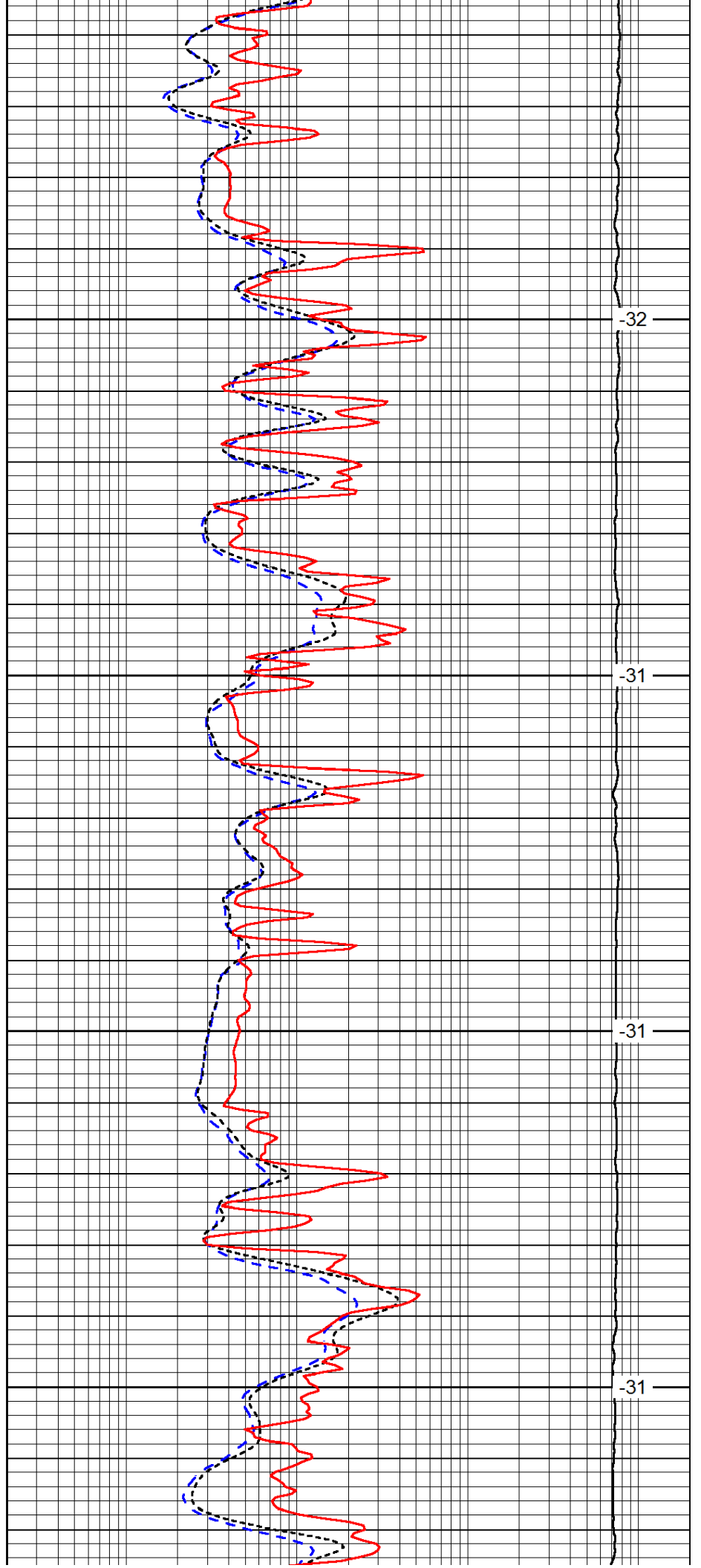


3050

3100

3150

3200

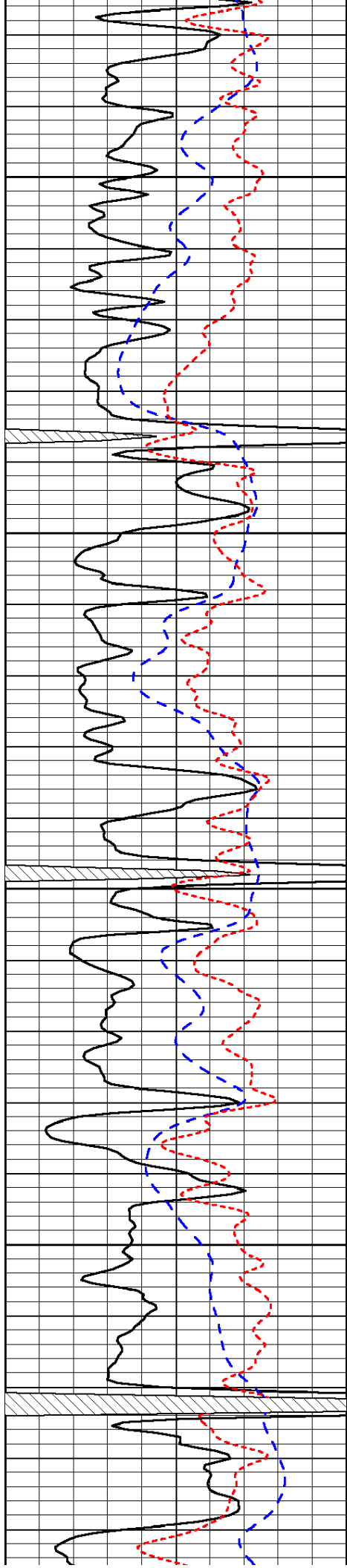


-32

-31

-31

-31

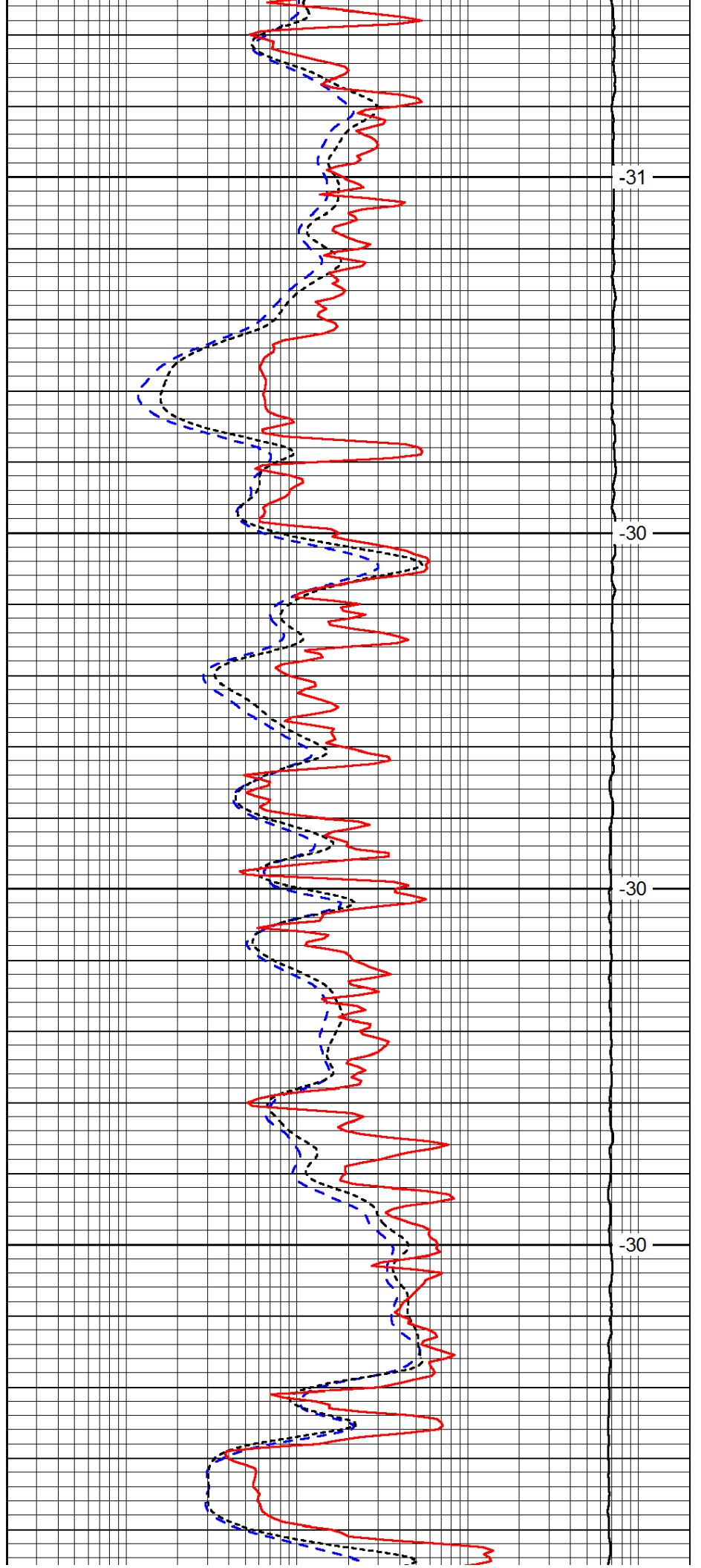


3250

3300

3350

3400

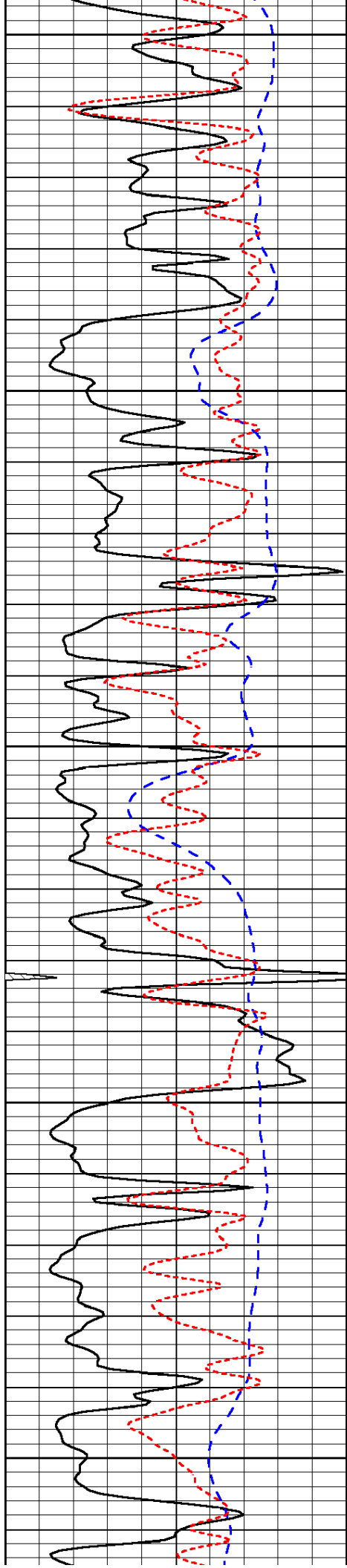


-31

-30

-30

-30



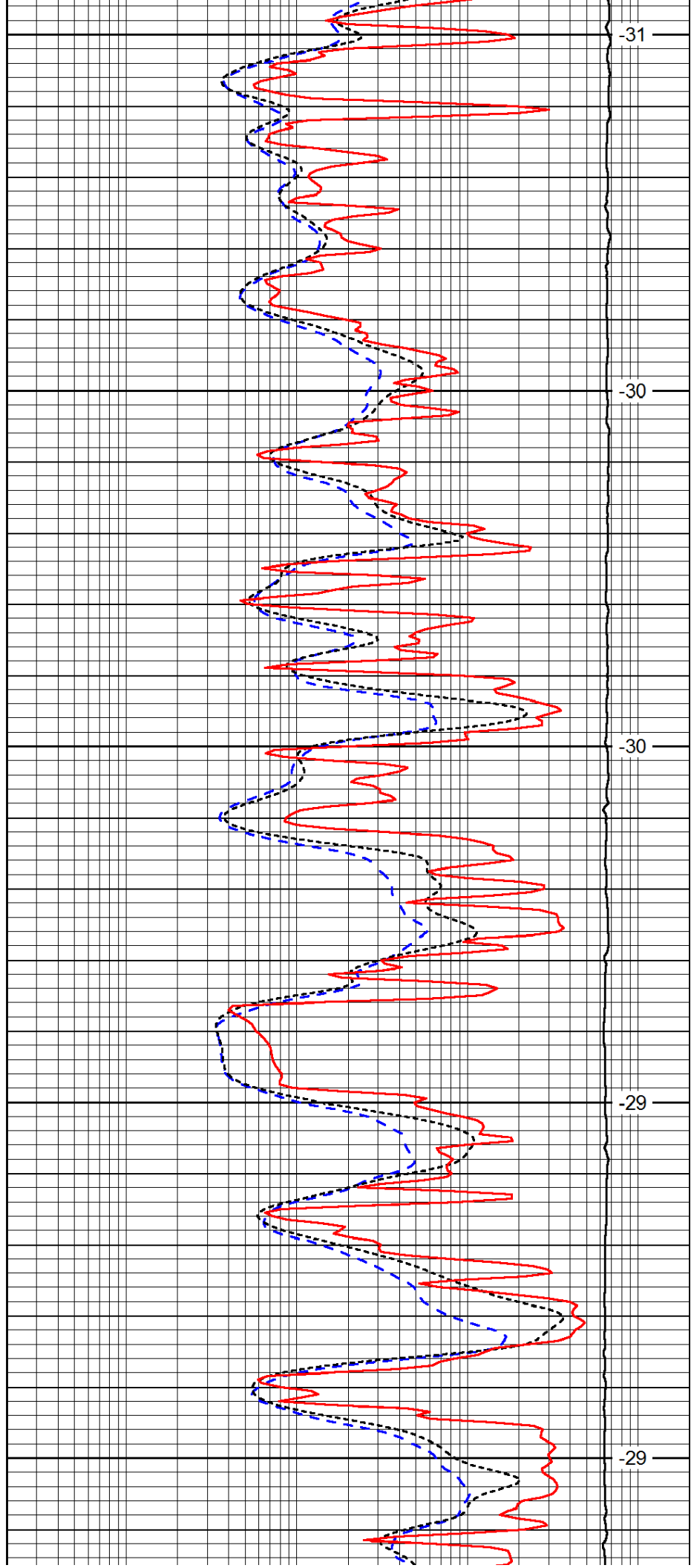
3450

3500

3550

3600

3650



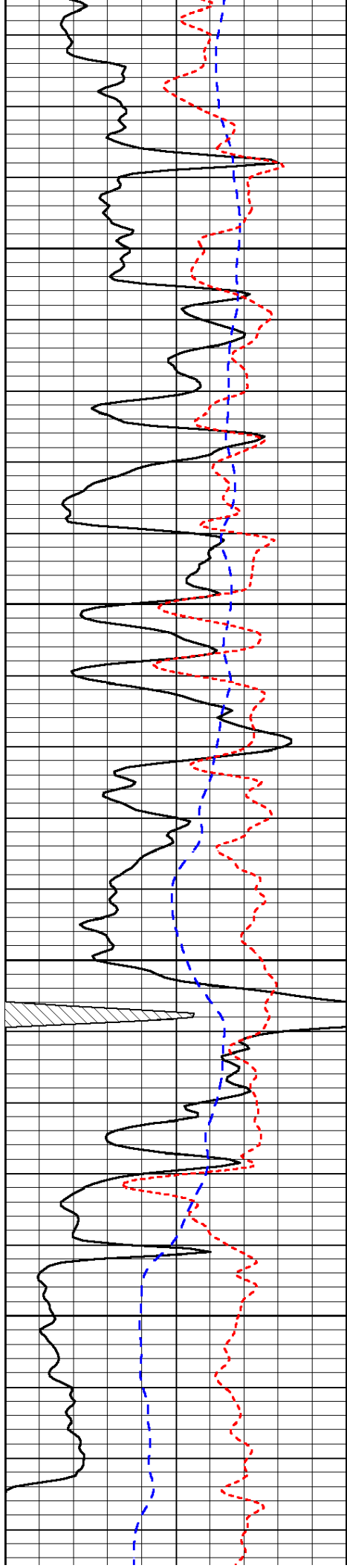
-31

-30

-30

-29

-29

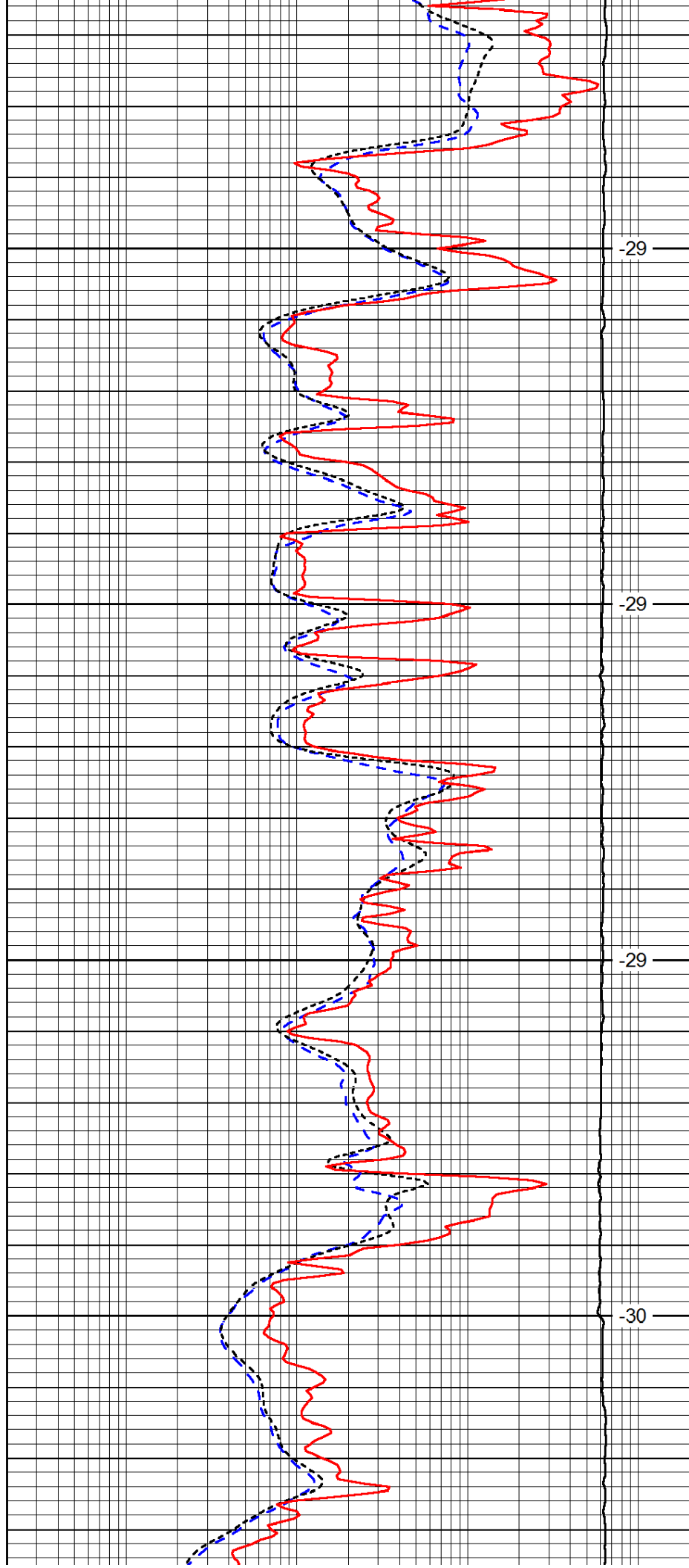


3700

3750

3800

3850

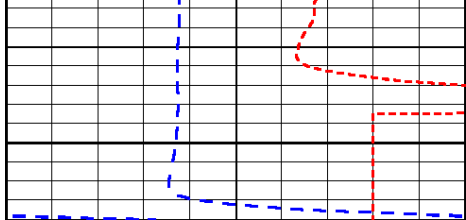


-29

-29

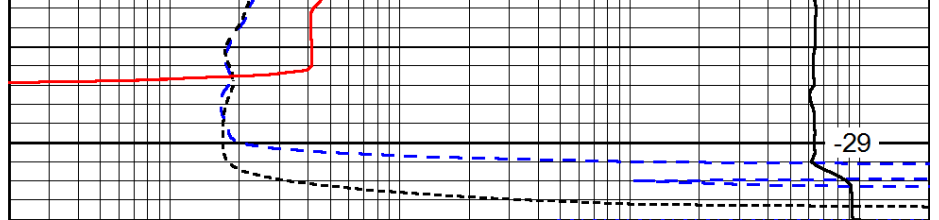
-29

-30



0	Gamma Ray	150
-200	SP (mV)	0
-160	RxoRt	40

3900



0.2	Deep Resistivity	2000
0.2	Medium Resistivity	2000
0.2	Shallow Resistivity	2000
15000	Line Tension	0

LSPD