



Pioneer Energy Services

Dual Compensated Porosity Log

Company McElvain Energy, Inc.
Well Spalsbury 3-2 #1
Field Kohl West
County Trego
State Kansas

Other Services
 DIL
 MEL/BHCS

Location 349' FSL & 2281' FEL
Sec: 3 **Twp:** 12S **Rge:** 21W

Permanent Datum Ground Level Elevation 2305
Log Measured From Kelly Bushing 10 Ft. Above Perm. Datum
Drilling Measured From Kelly Bushing

Elevation
 K.B. 2315
 D.F. G.L. 2305

15-195-22982-00-00

Date	12/19/2014
Run Number	One
Type Log	CNL / CDL
Depth Driller	4084
Depth Logger	4085
Bottom Logged Interval	4054
Top Logged Interval	3200
Type Fluid In Hole	Chemical
Salinity, PPM CL	2700
Density	9.3
Level	Full
Max. Rec. Temp. F	117
Operating Rig Time	4 Hours
Equipment -- Location	91 Hays
Recorded By	D. Schmidt
Witnessed By	Rodney Gonzales

Borehole Record

Run No	Bit	From	To	Size	Wgt.	From	To
One	12.25	00	292	8.625	23#	00	292
Two	7.875	292	TD				

Casing Record

<<< Fold Here >>>

All interpretations are opinions based on inferences from electrical or other measurements and we cannot and do not guarantee the accuracy or correctness of any interpretation, and we shall not, except in the case of gross or willful negligence on our part, be liable or responsible for any loss, costs, damages, or expenses incurred or sustained by anyone resulting from any interpretation made by any of our officers, agents or employees. These interpretations are also subject to our general terms and conditions set out in our current Price Schedule.

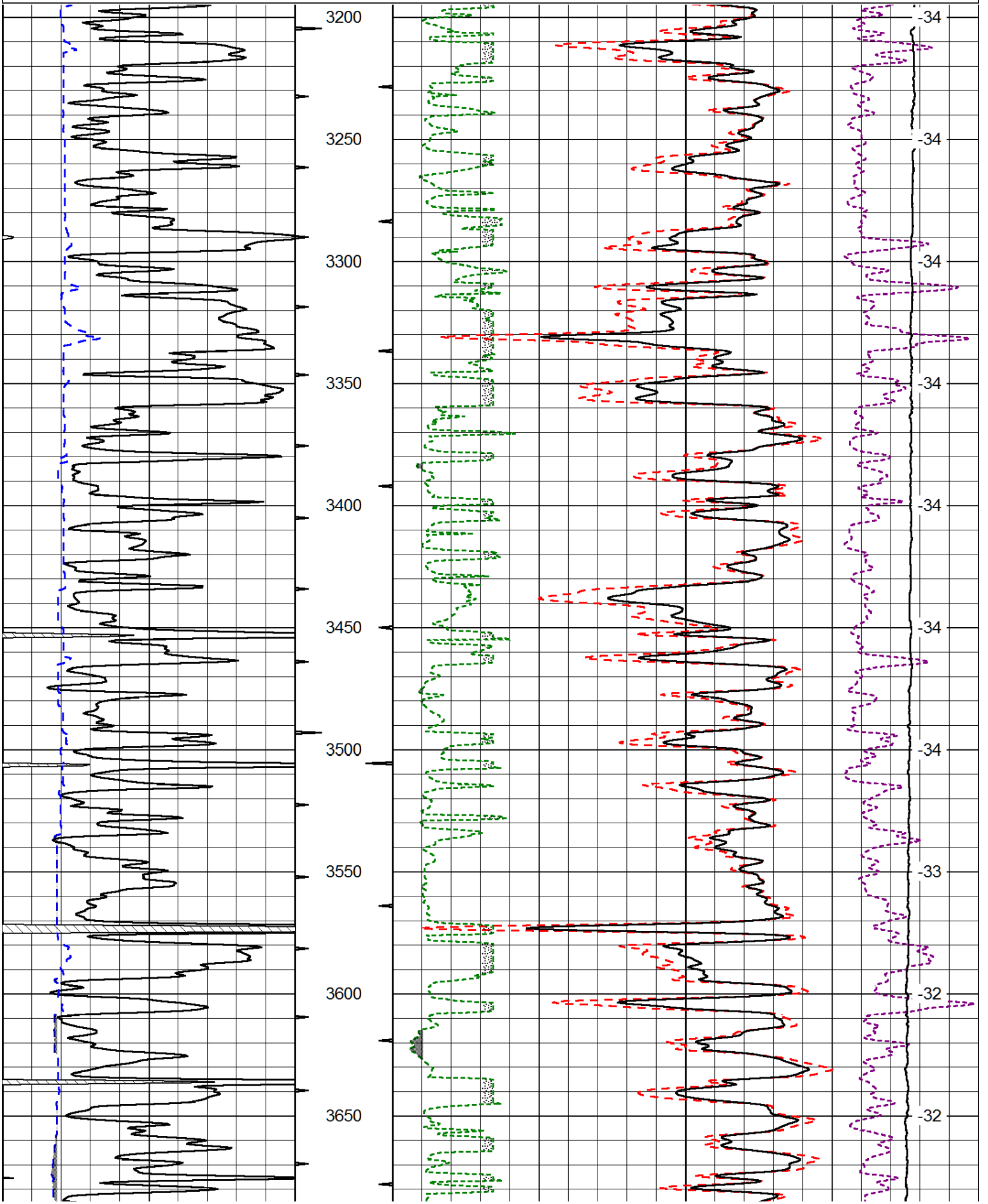
Comments

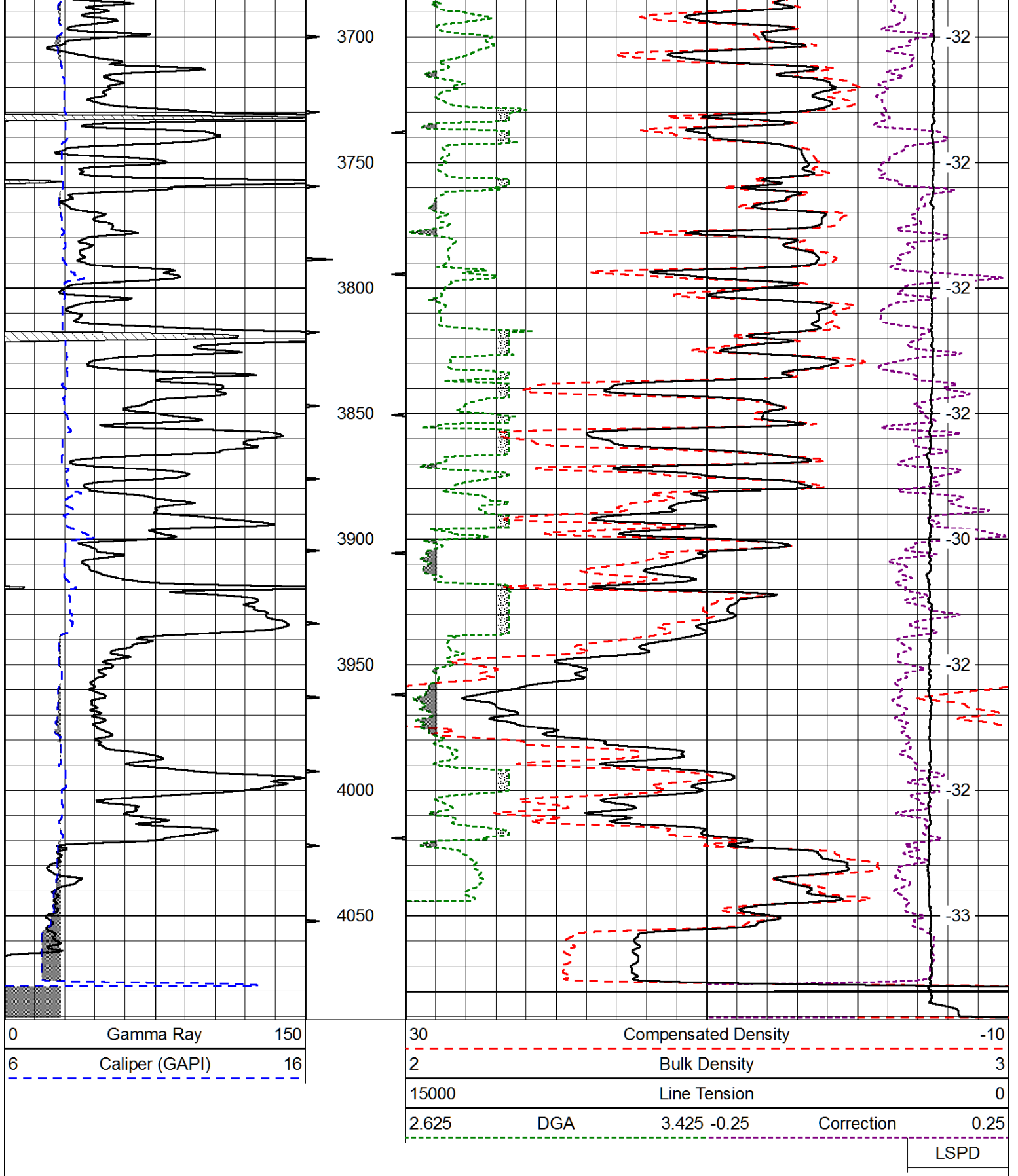
Thank you for using Log-Tech, Inc.
 (785) 625-3858
 I-70 & Riga Rd,
 North to G Rd, 1/2 East,
 South into

Database File: mcelvain_spalsbury_3-2_1hd.db
 Dataset Pathname: dil/mcstkml
 Presentation Format: cdl
 Dataset Creation: Fri Dec 19 14:16:02 2014
 Charted by: Depth in Feet scaled 1:600

0	Gamma Ray	150
6	Caliper (GAPI)	16

30	Compensated Density		-10
2	Bulk Density		3
15000	Line Tension		0
2.625	DGA	3.425	-0.25
			Correction
			0.25





Database File: mcelvain_spalsbury_3-2_1hd.db
 Dataset Pathname: dil/mcstkml
 Presentation Format: cndlspec
 Dataset Creation: Fri Dec 19 14:16:02 2014
 Charted by: Depth in Feet scaled 1:240

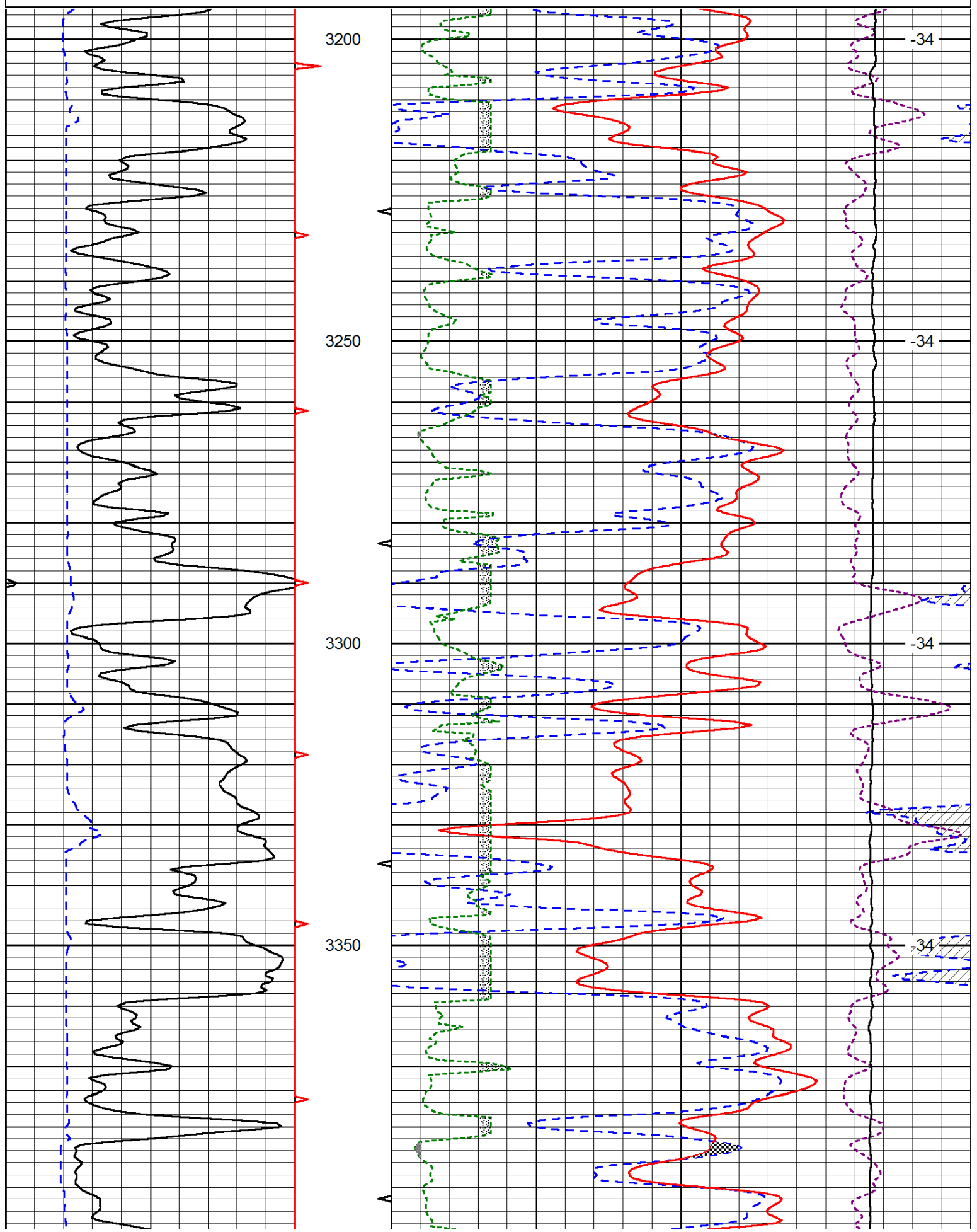
0	Gamma Ray	150	30	CNLS	-10
6	Caliper (GAPI)	16	30	Compensated Density (2.71 ma)	-10

Caliper (CAV 1)

10

2.625	DGA	3.425	-0.25	Correction	0.25
10000	Line Tension				0

LSPD



3200

-34

3250

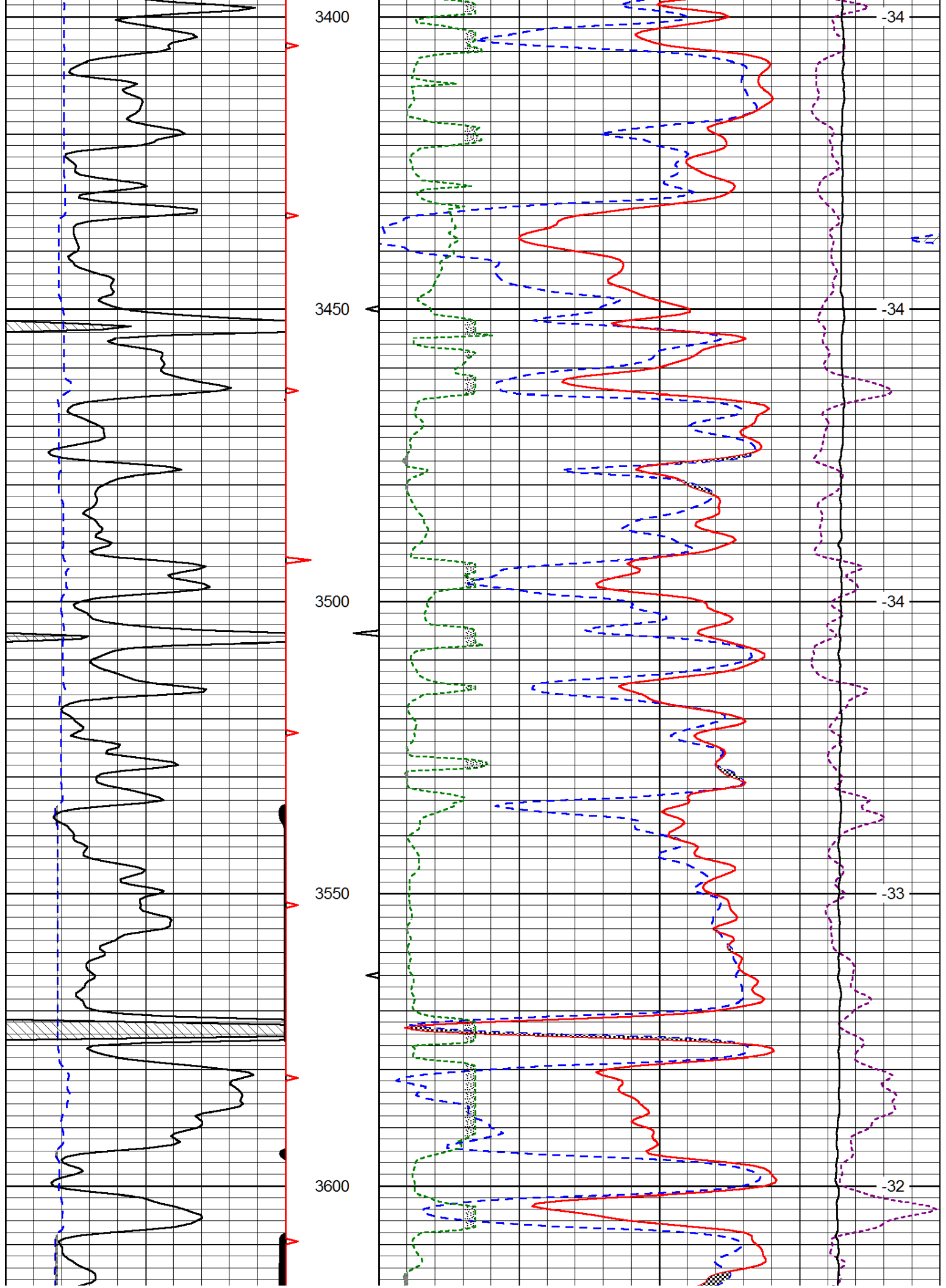
-34

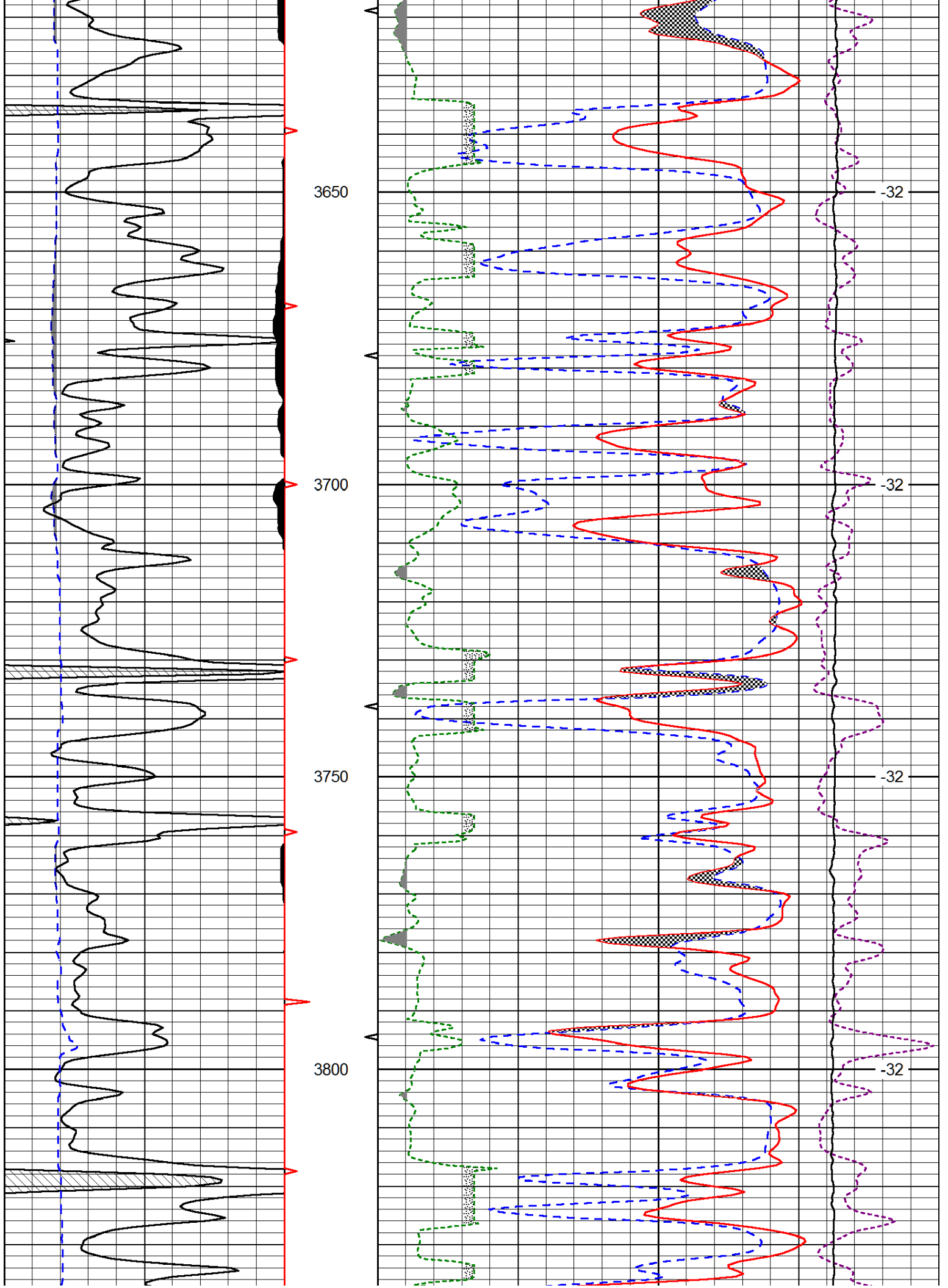
3300

-34

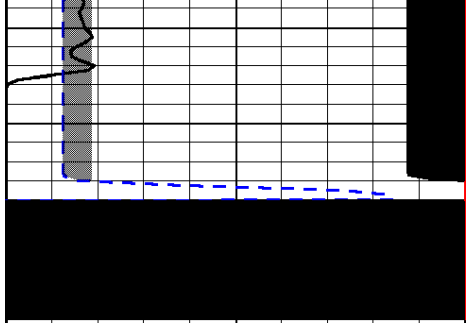
3350

-34

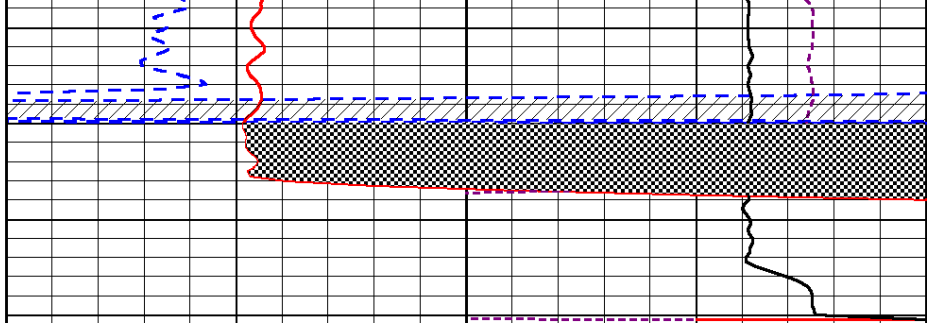








0	Gamma Ray	150
6	Caliper (GAPI)	16



30	CNLS	-10
30	Compensated Density (2.71 ma)	-10
2.625	DGA	3.425 -0.25
10000	Line Tension	0

LSPD