



Pioneer Energy Services

Dual Induction Log

API No.	15-195-22982-00-00	
Company	McElvain Energy, Inc.	
Well	Spalsbury 3-2 #1	
Field	Kohl West	
County	Trego	State
		Kansas
Location	349' FSL & 2281' FEL	
Sec: 3	Twp: 12S	Rge: 21W
Permanent Datum	Ground Level	Elevation 2305
Log Measured From	Kelly Bushing	10 Ft. Above Perm. Datum
Drilling Measured From	Kelly Bushing	K.B. 2315 D.F. 2305 G.L. 2305

Date	12/19/2014
Run Number	One
Depth Driller	4084
Depth Logger	4085
Bottom Logged Interval	4084
Top Log Interval	250
Casing Driller	8.625 @ 292
Casing Logger	289
Bit Size	7.875
Type Fluid in Hole	Chemical
Salinity, ppm CL	2700
Density / Viscosity	9.3 58
pH / Fluid Loss	10.5 7.8
Source of Sample	Flowline
Rm @ Meas. Temp	0.85 @ 55
Rmf @ Meas. Temp	0.64 @ 55
Rmc @ Meas. Temp	1.15 @ 55
Source of Rmf / Rmc	Charts
Rm @ BHT	0.40 @ 117
Operating Rig Time	4 Hours
Max Rec. Temp. F	117
Equipment Number	91
Location	Hays
Recorded By	D. Schmidt
Witnessed By	Rodney Gonzales

<<< Fold Here >>>

All interpretations are opinions based on inferences from electrical or other measurements and we cannot and do not guarantee the accuracy or correctness of any interpretation, and we shall not, except in the case of gross or willful negligence on our part, be liable or responsible for any loss, costs, damages, or expenses incurred or sustained by anyone resulting from any interpretation made by any of our officers, agents or employees. These interpretations are also subject to our general terms and conditions set out in our current Price Schedule.

Comments

Thank you for using Log-Tech, Inc.
 (785) 625-3858
 I-70 & Riga Rd,
 North to G Rd, 1/2 East,
 South into

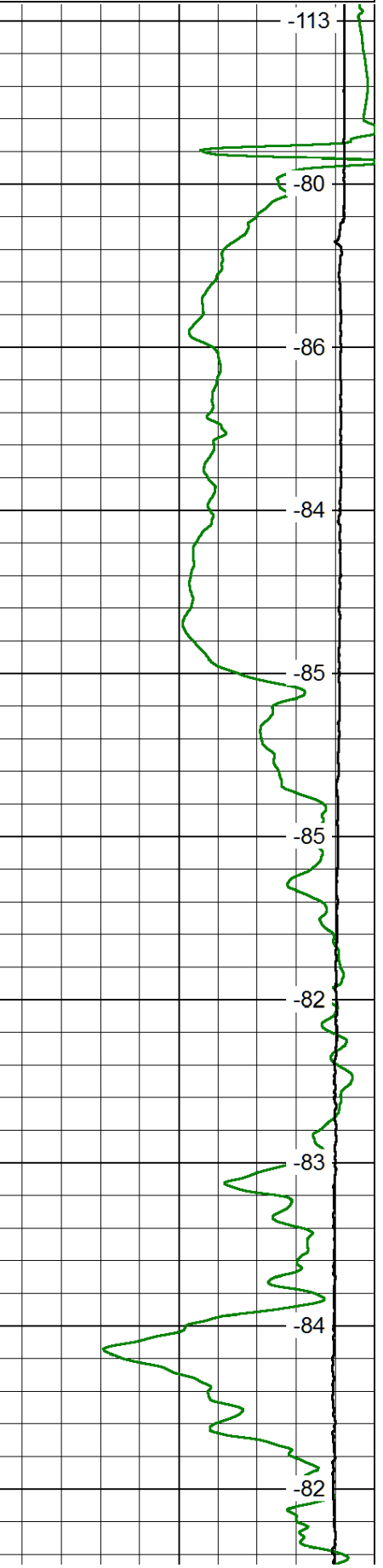
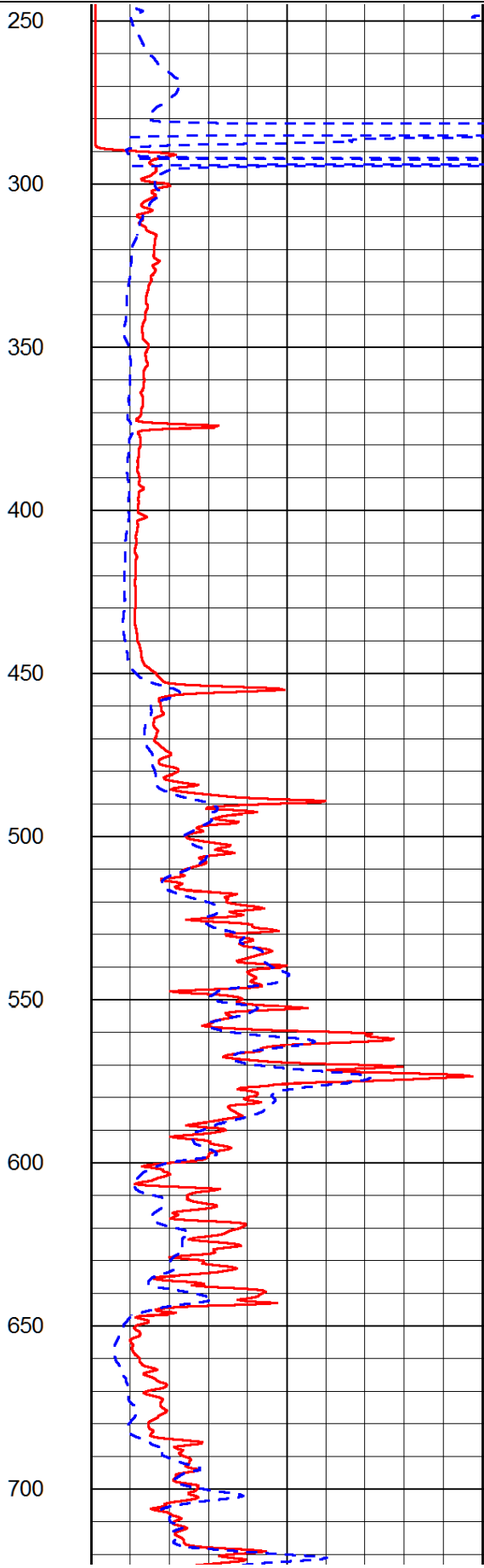
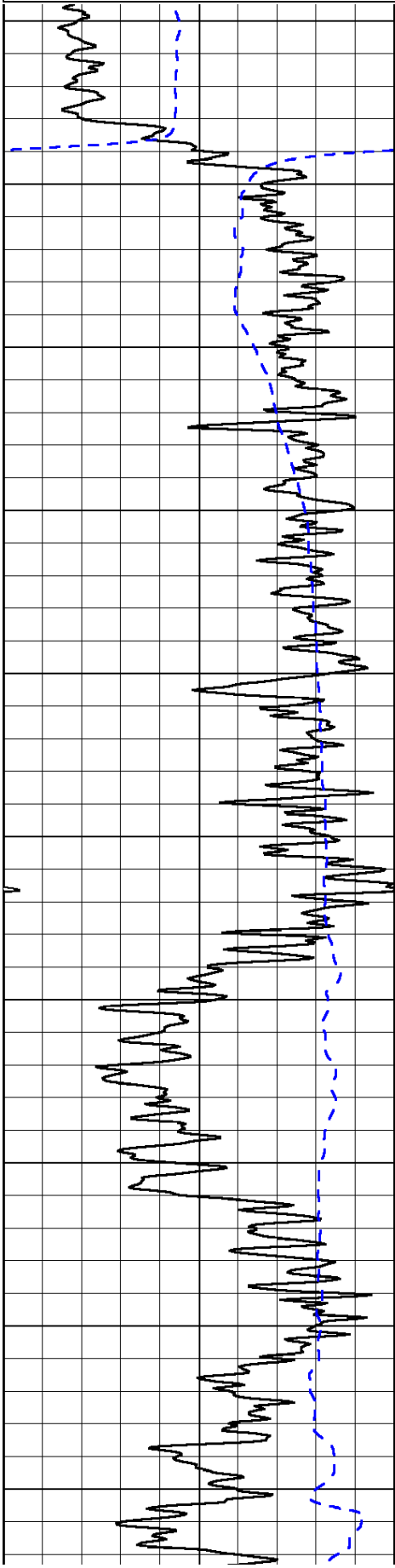
Database File: mcelvain_spalsbury_3-2_1hd.db
 Dataset Pathname: dil/mcstkml
 Presentation Format: dil2in
 Dataset Creation: Fri Dec 19 14:16:02 2014
 Charted by: Depth in Feet scaled 1:600

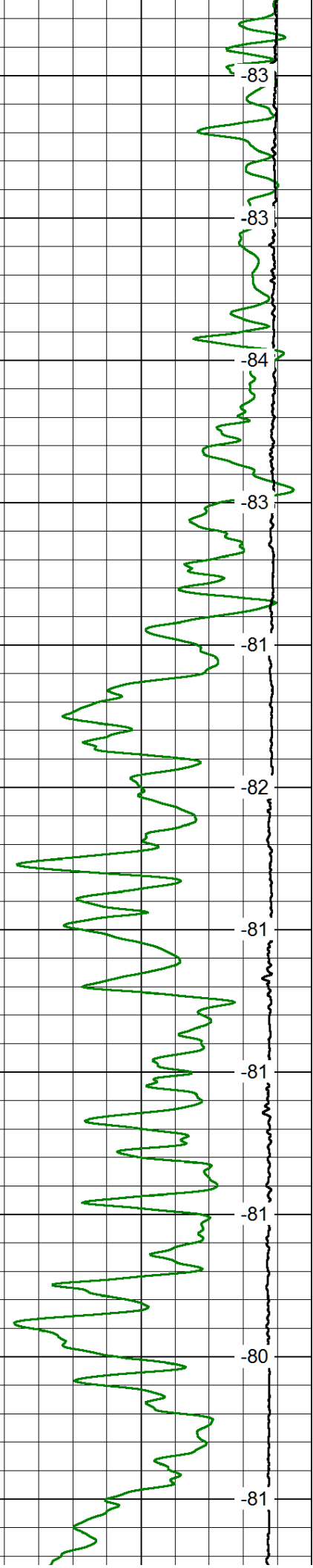
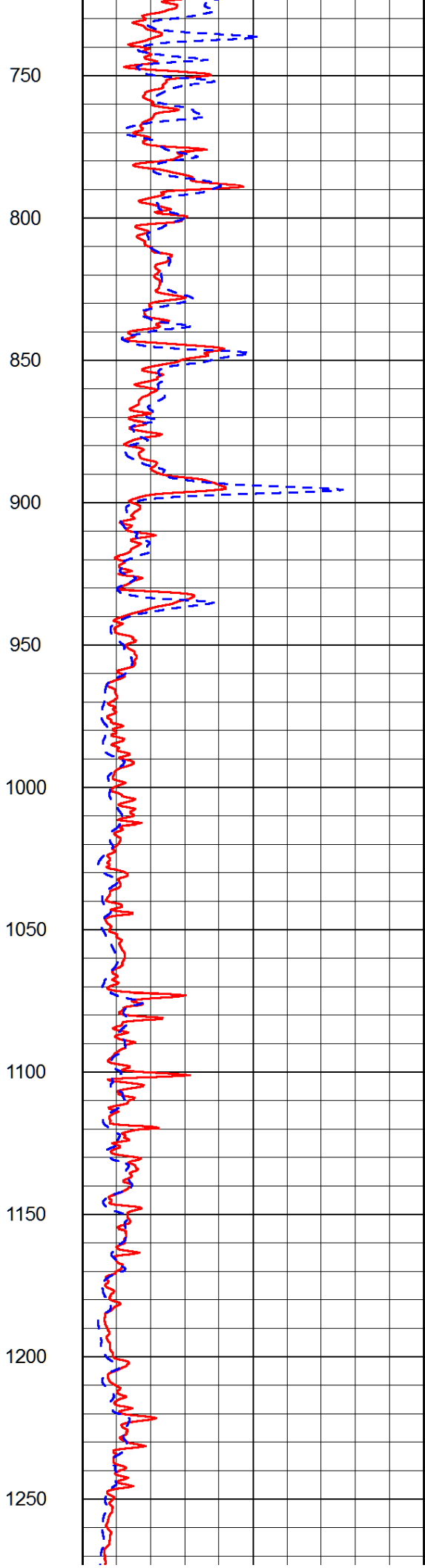
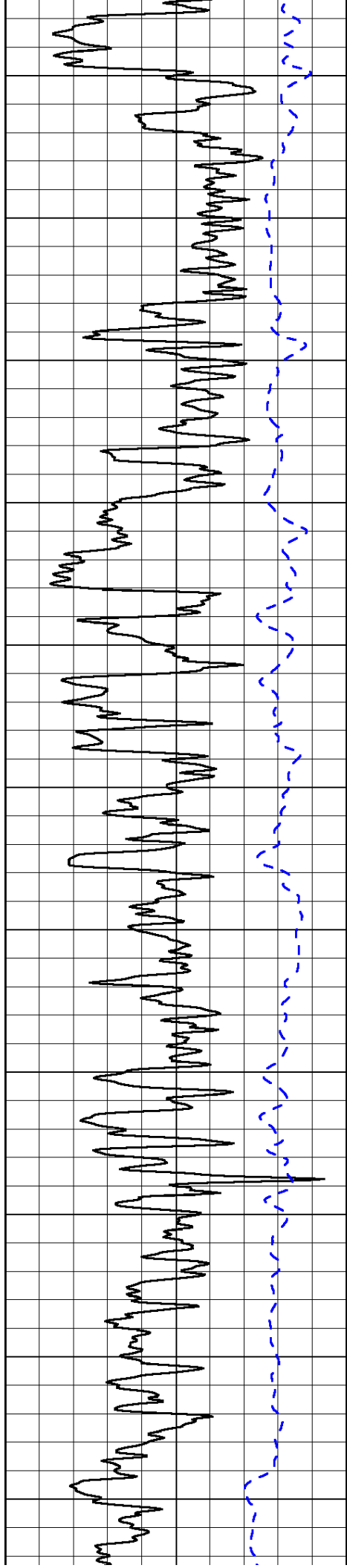
0	Gamma Ray	150
-200	SP (mV)	0

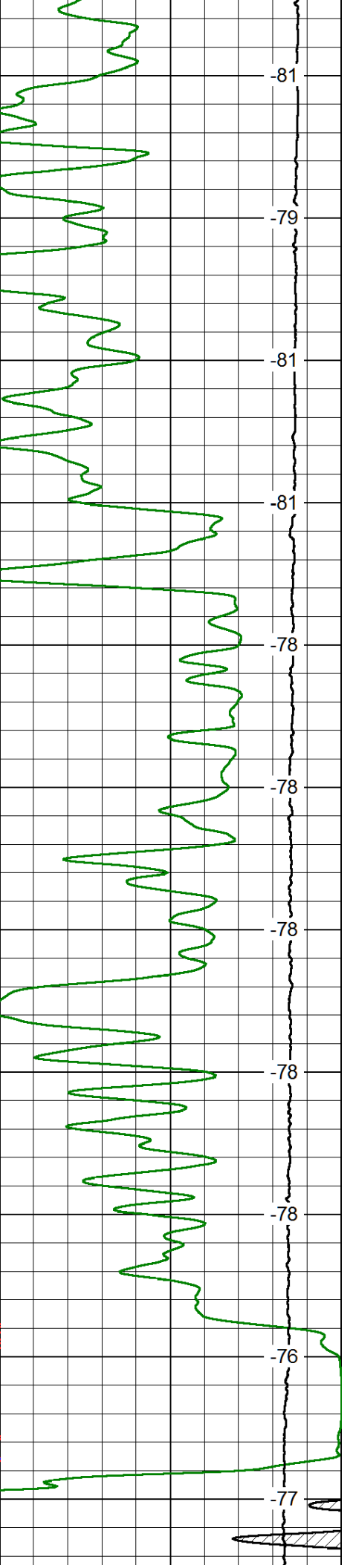
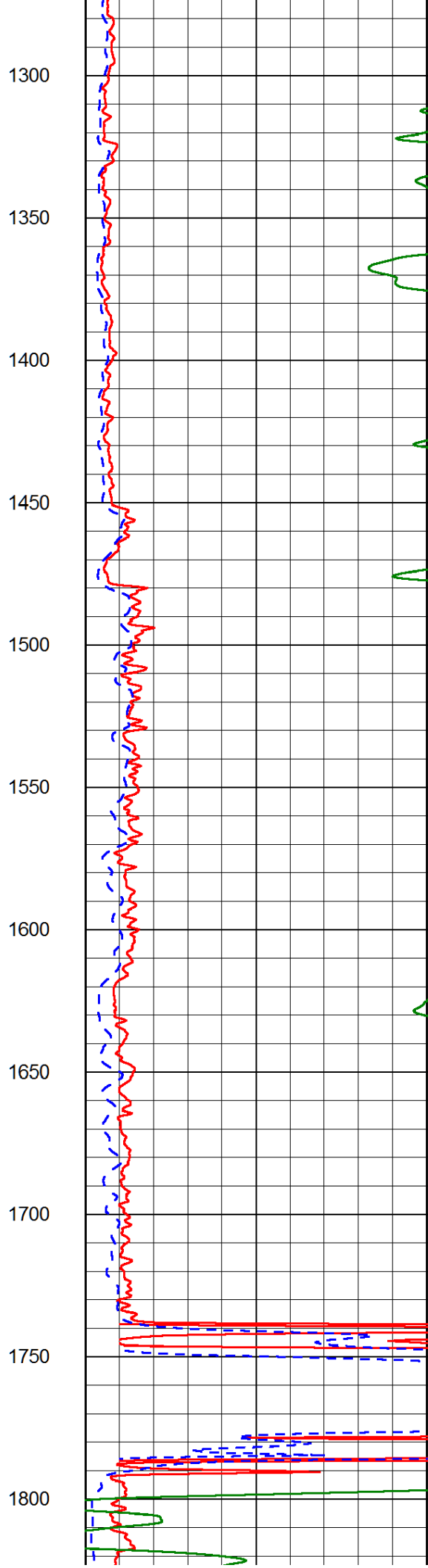
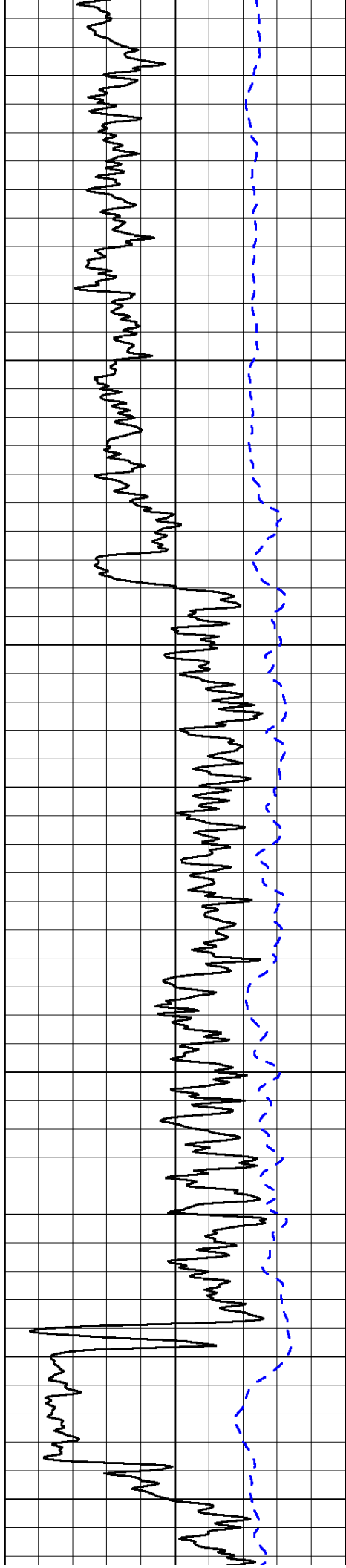
0	Shallow Resistivity	50
0	Deep Resistivity	50
1000	Conductivity	0
15000	Line Tension	0

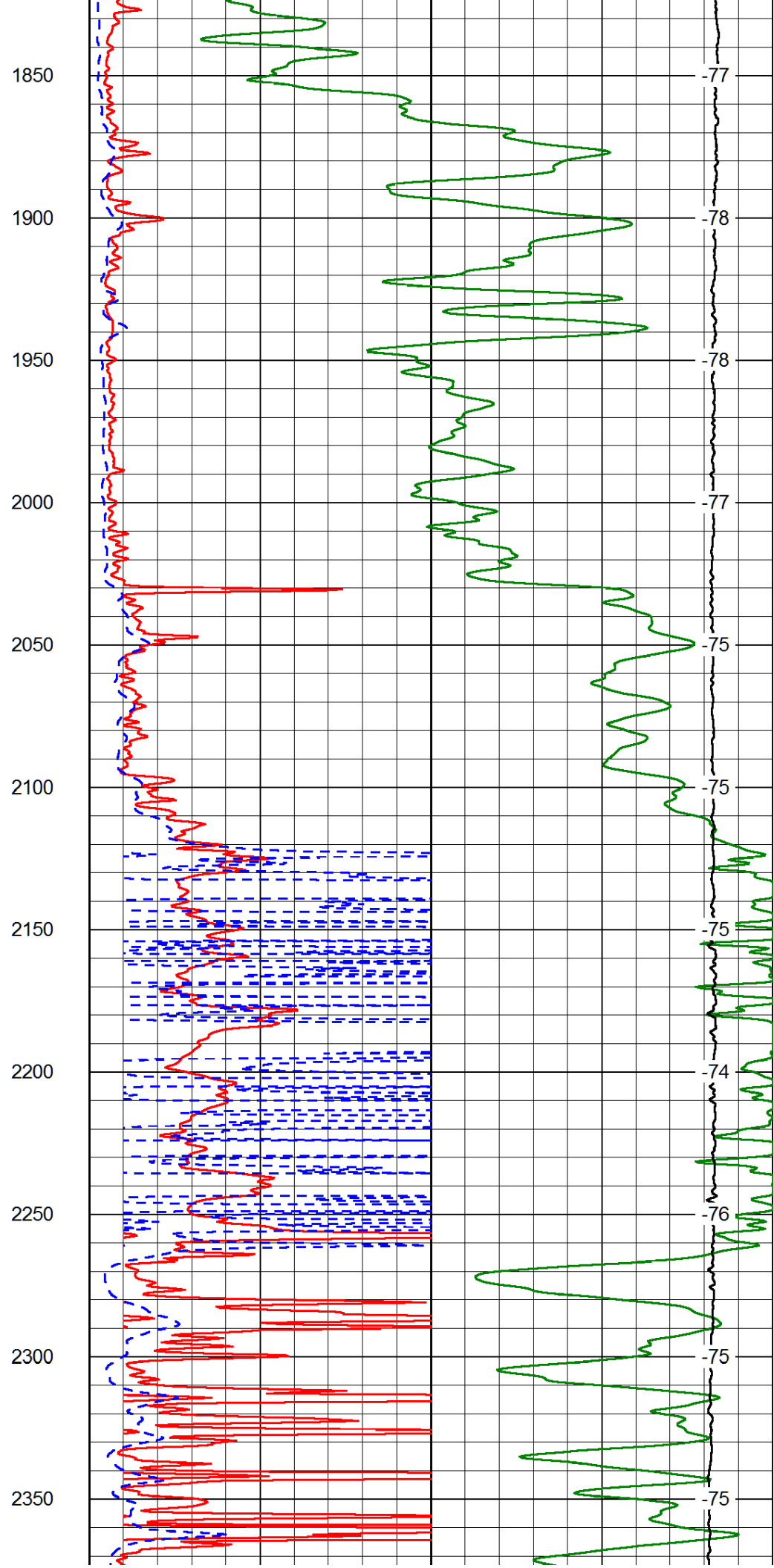
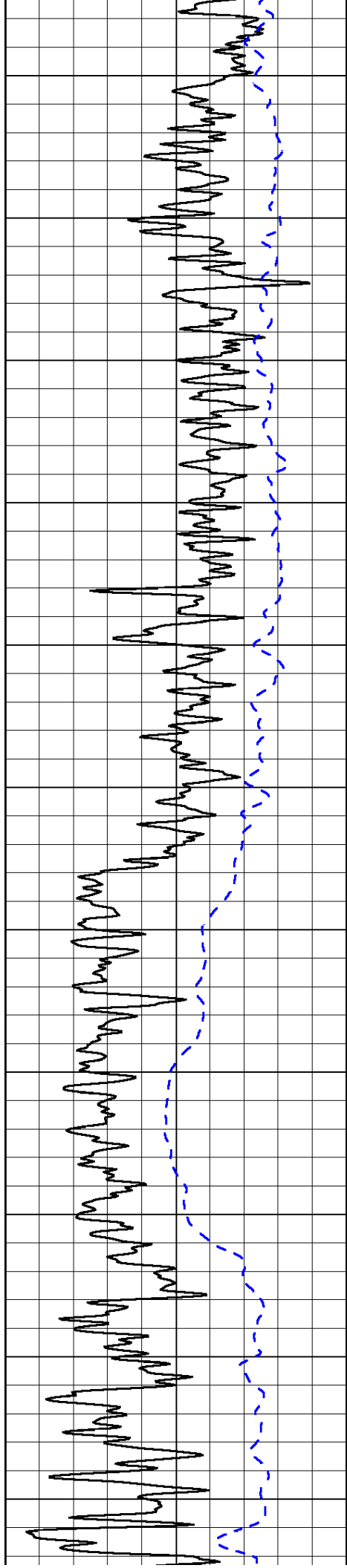
LSPD	0
------	---

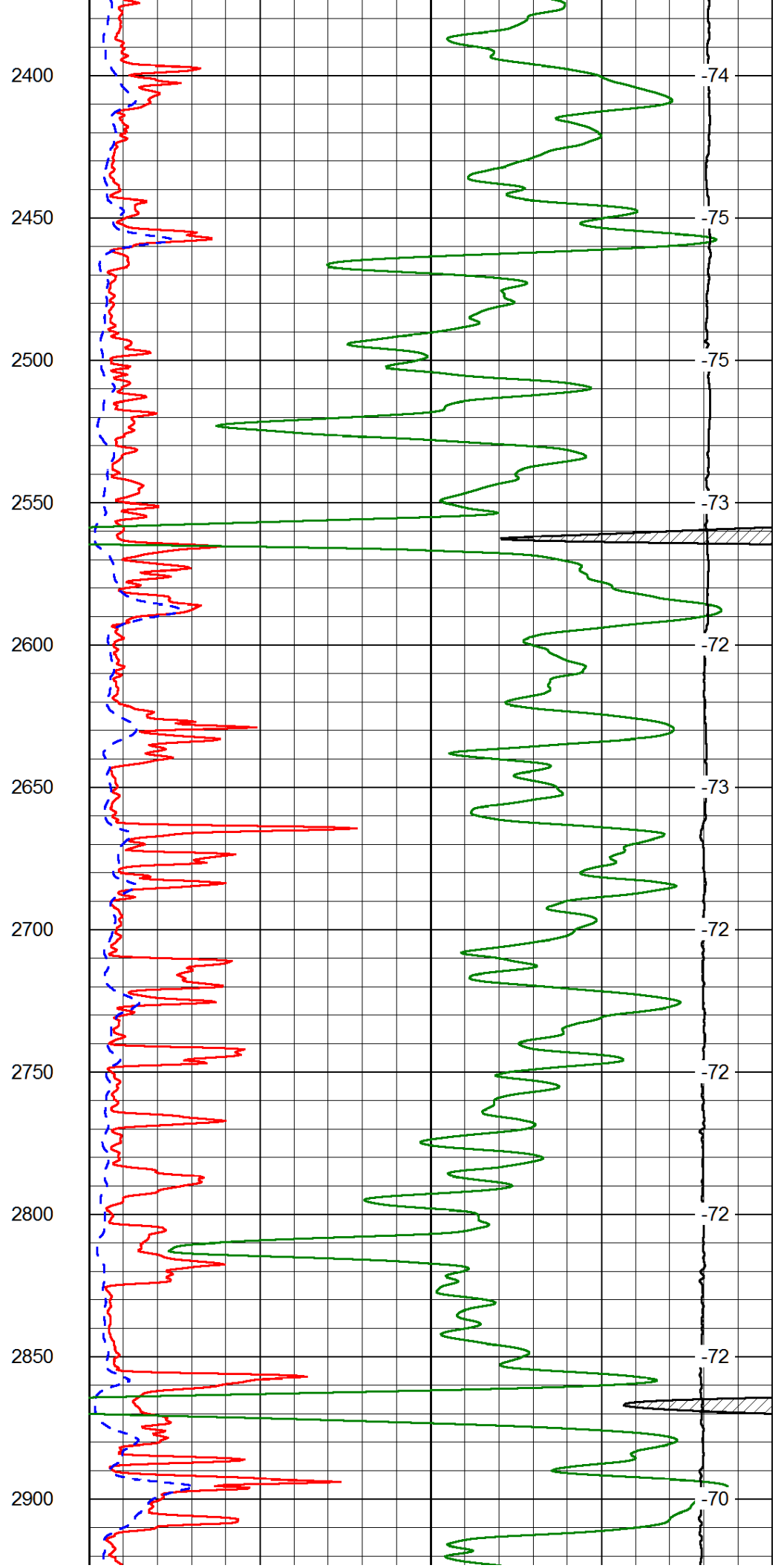
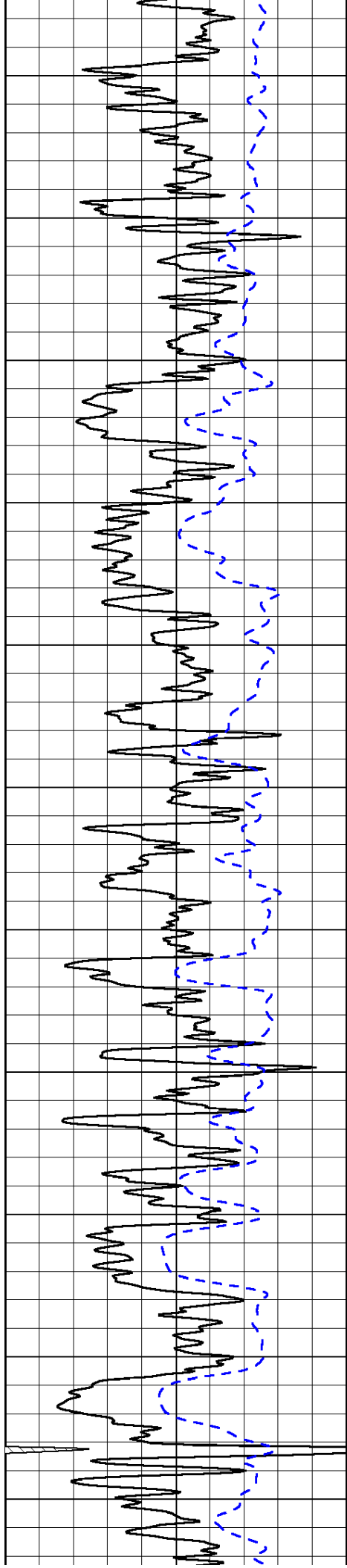
50	Shallow Resistivity	500
50	Deep Resistivity	500

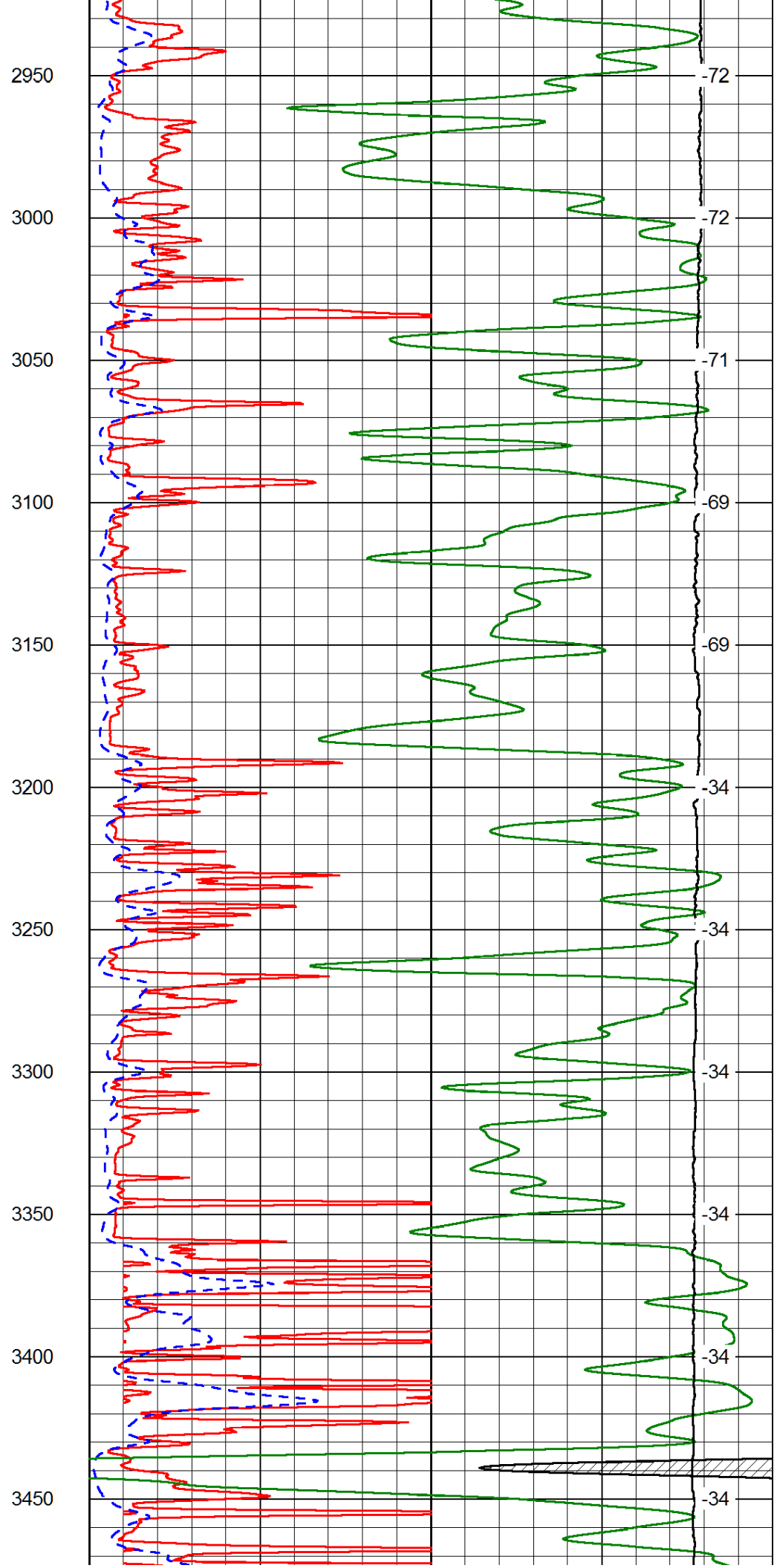
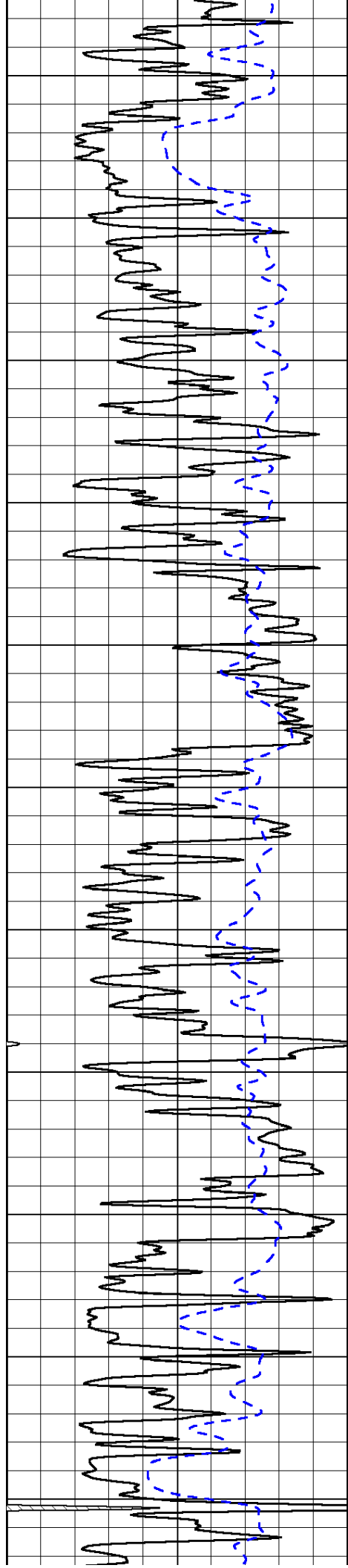


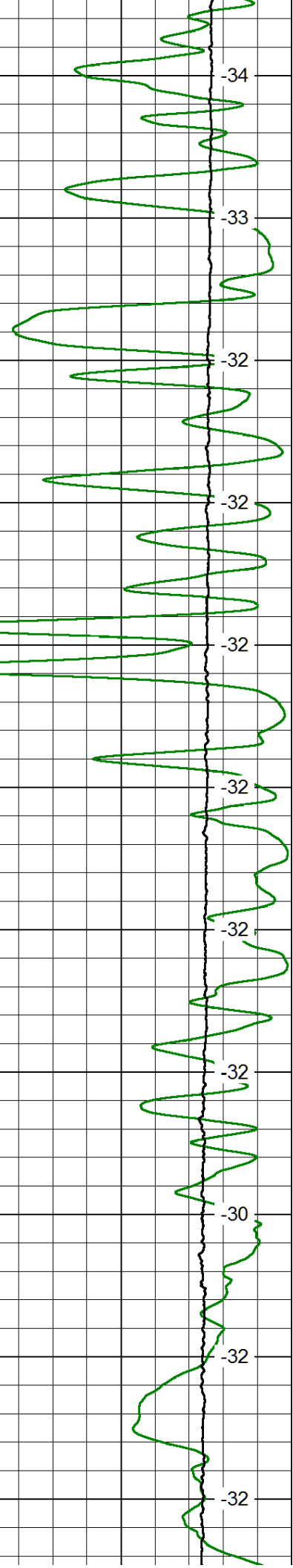
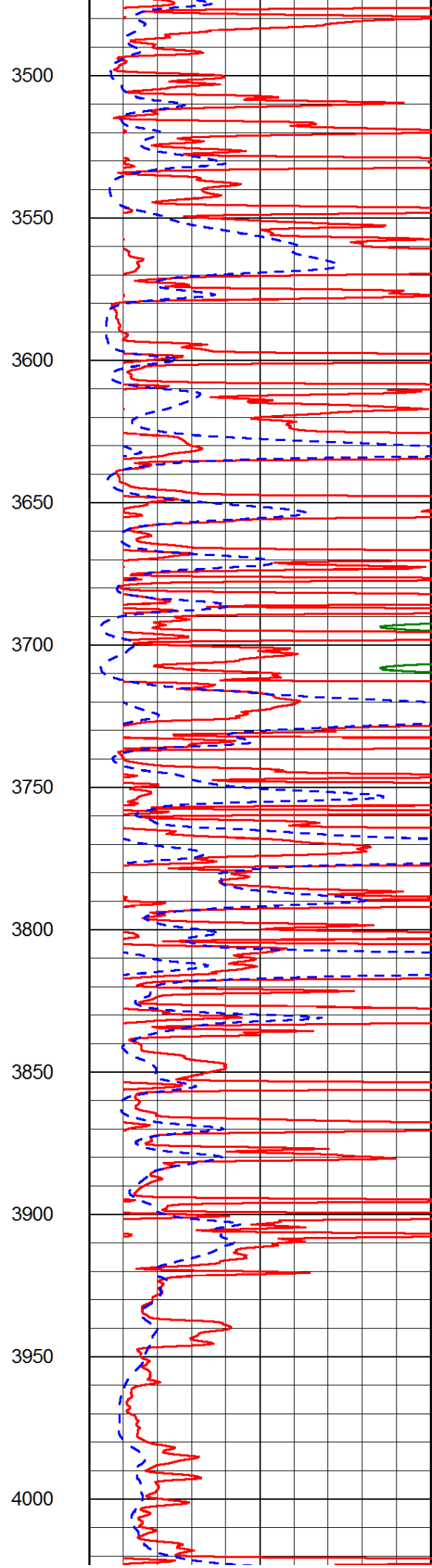
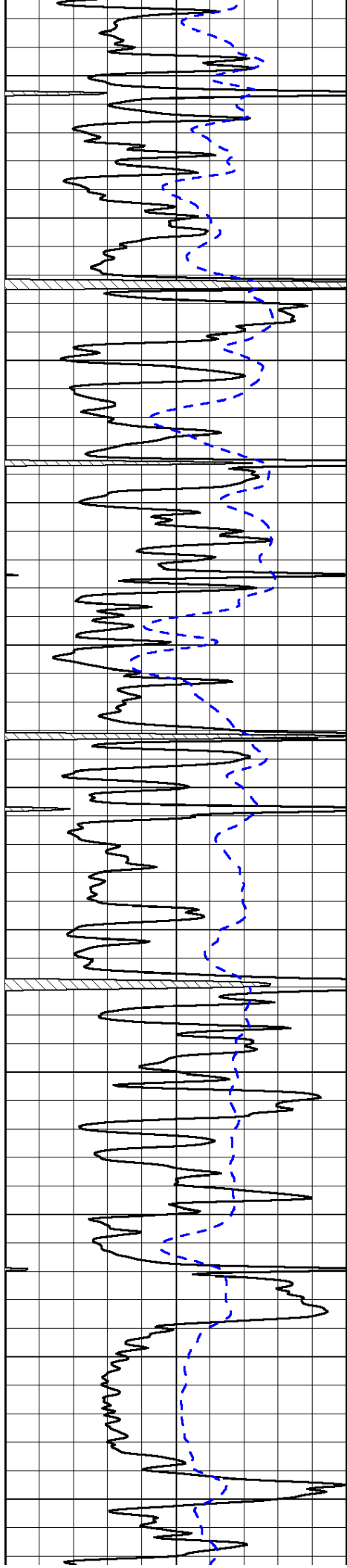


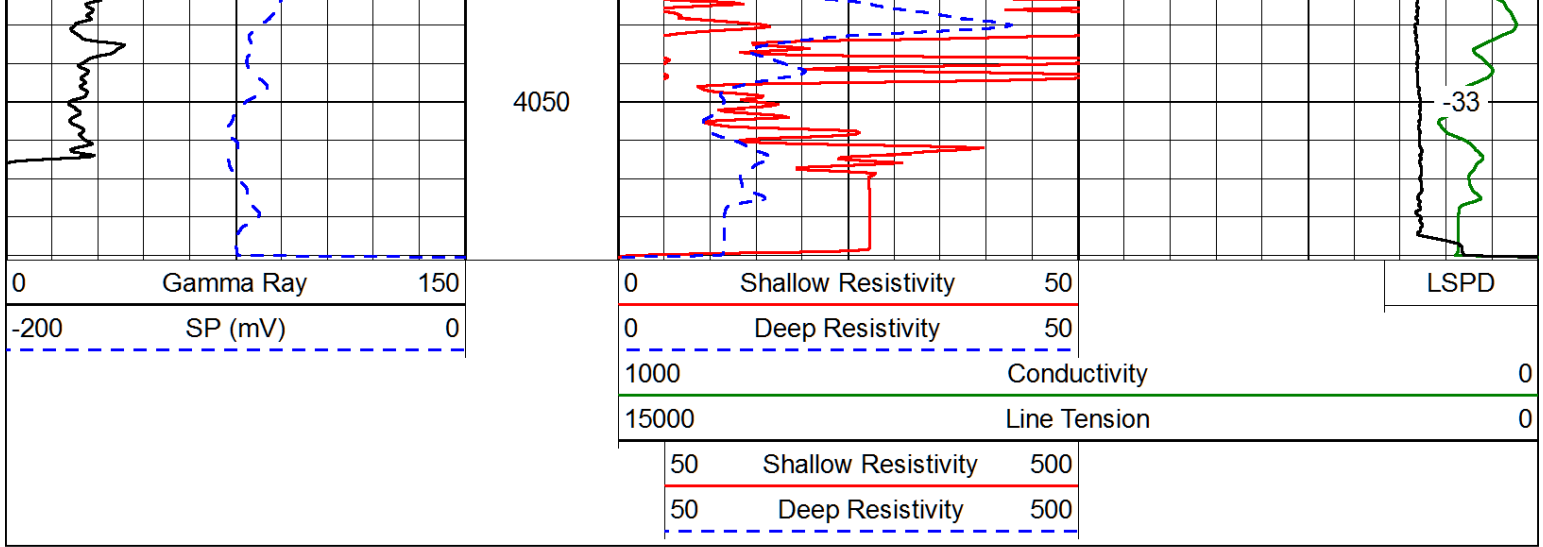




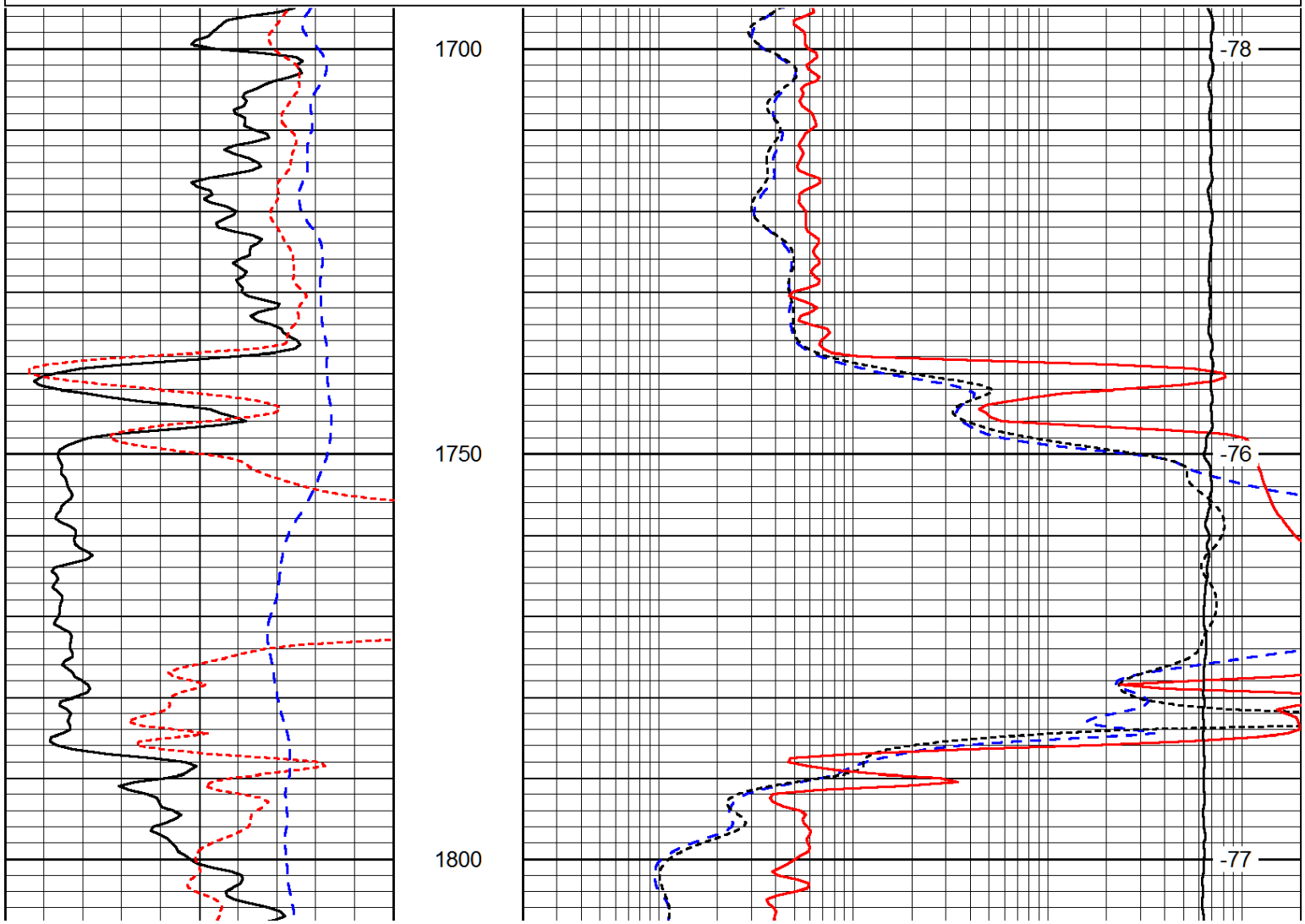
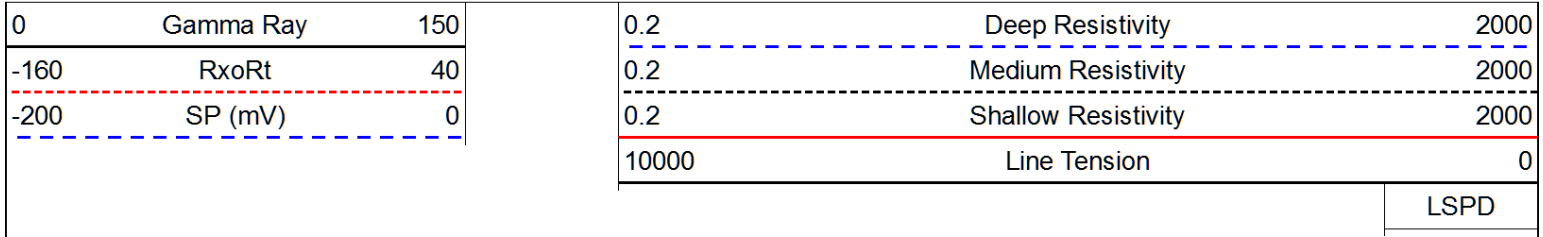


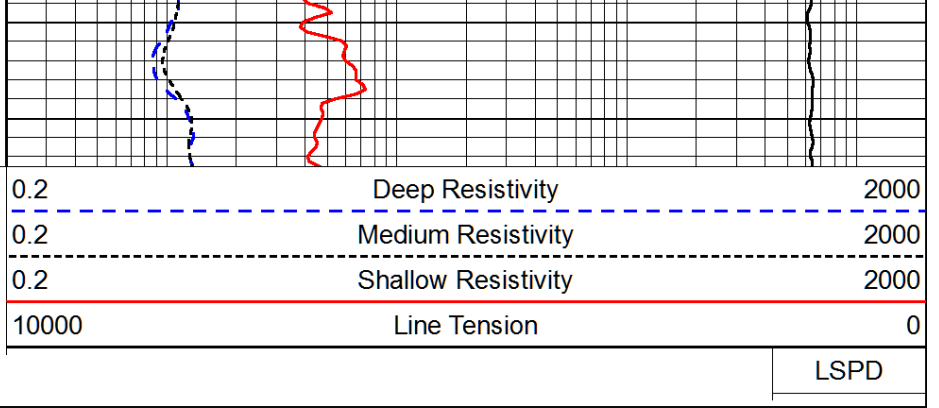
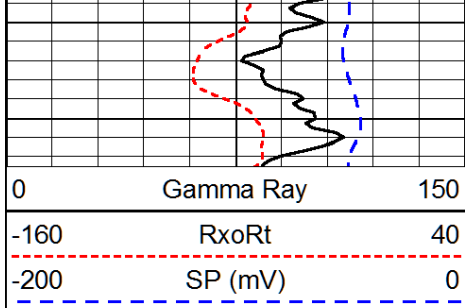




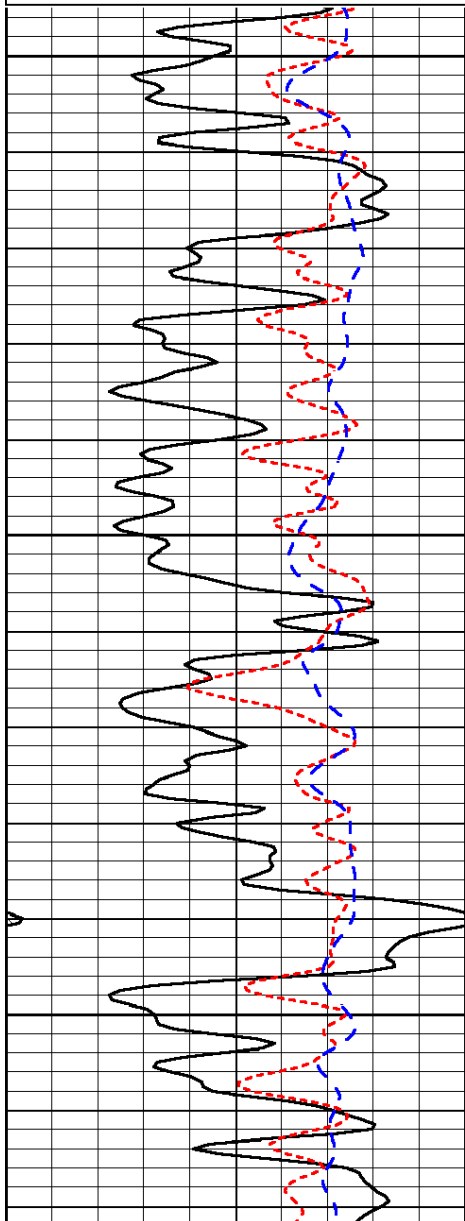
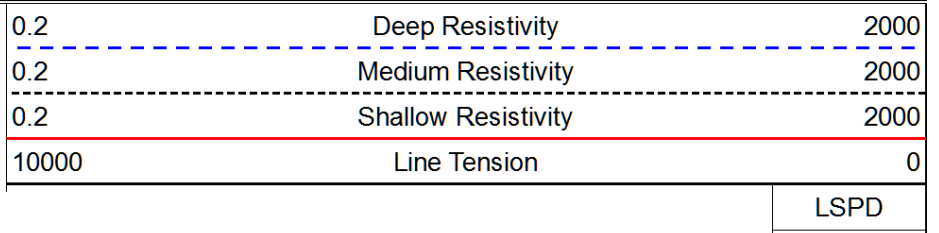
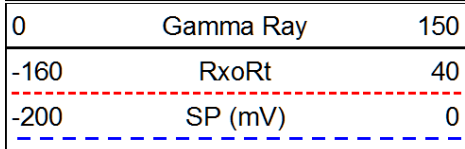


Database File: mcelvain_spalsbury_3-2_1hd.db
 Dataset Pathname: dil/mcstkml
 Presentation Format: dil
 Dataset Creation: Fri Dec 19 14:16:02 2014
 Charted by: Depth in Feet scaled 1:240





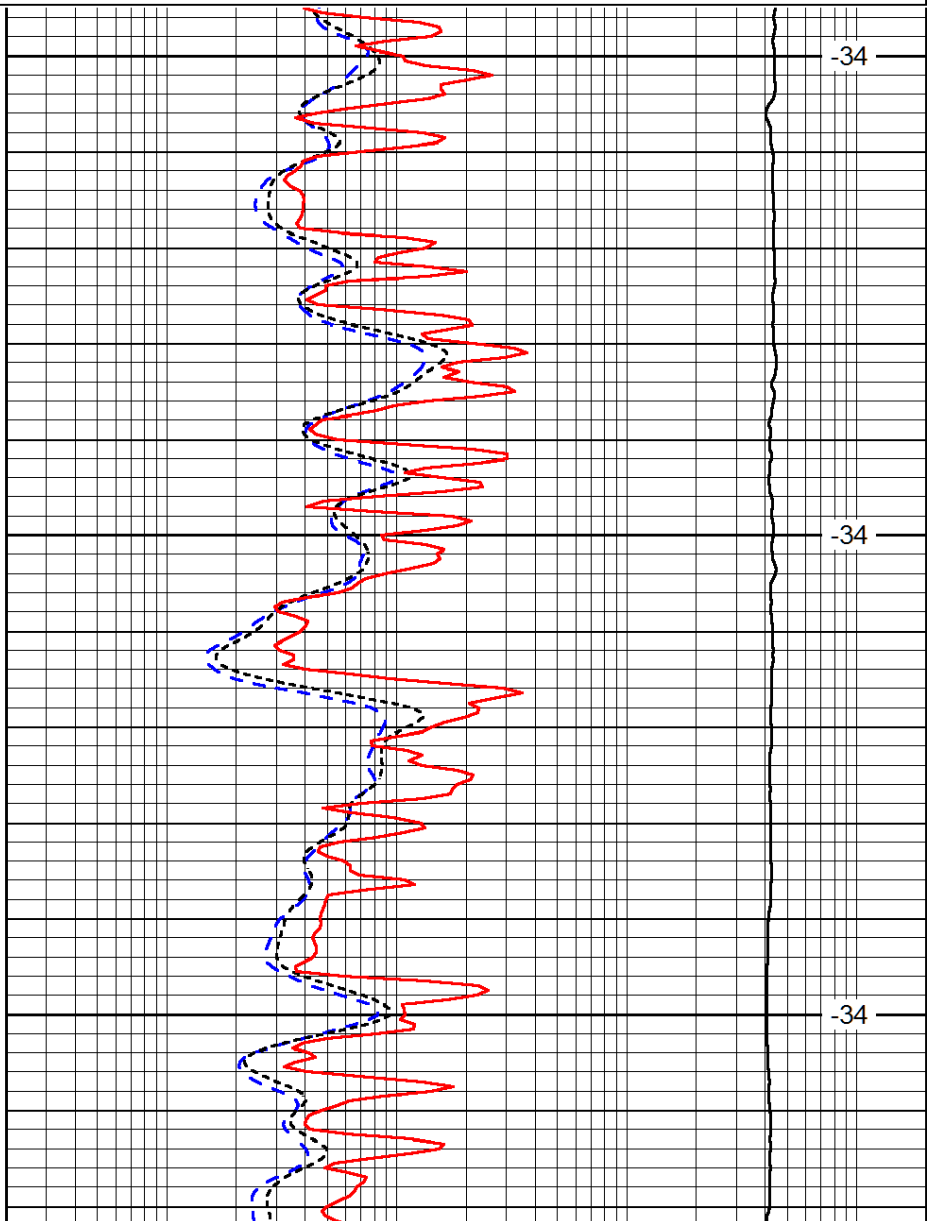
Database File: mcelvain_spalsbury_3-2_1hd.db
 Dataset Pathname: dil/mcstkm1
 Presentation Format: dil
 Dataset Creation: Fri Dec 19 14:16:02 2014
 Charted by: Depth in Feet scaled 1:240



3200

3250

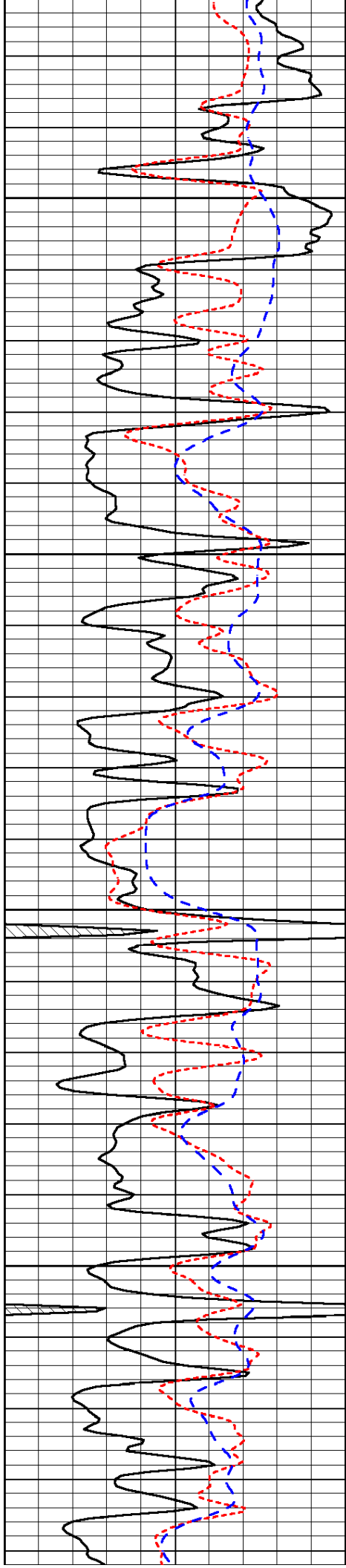
3300



-34

-34

-34

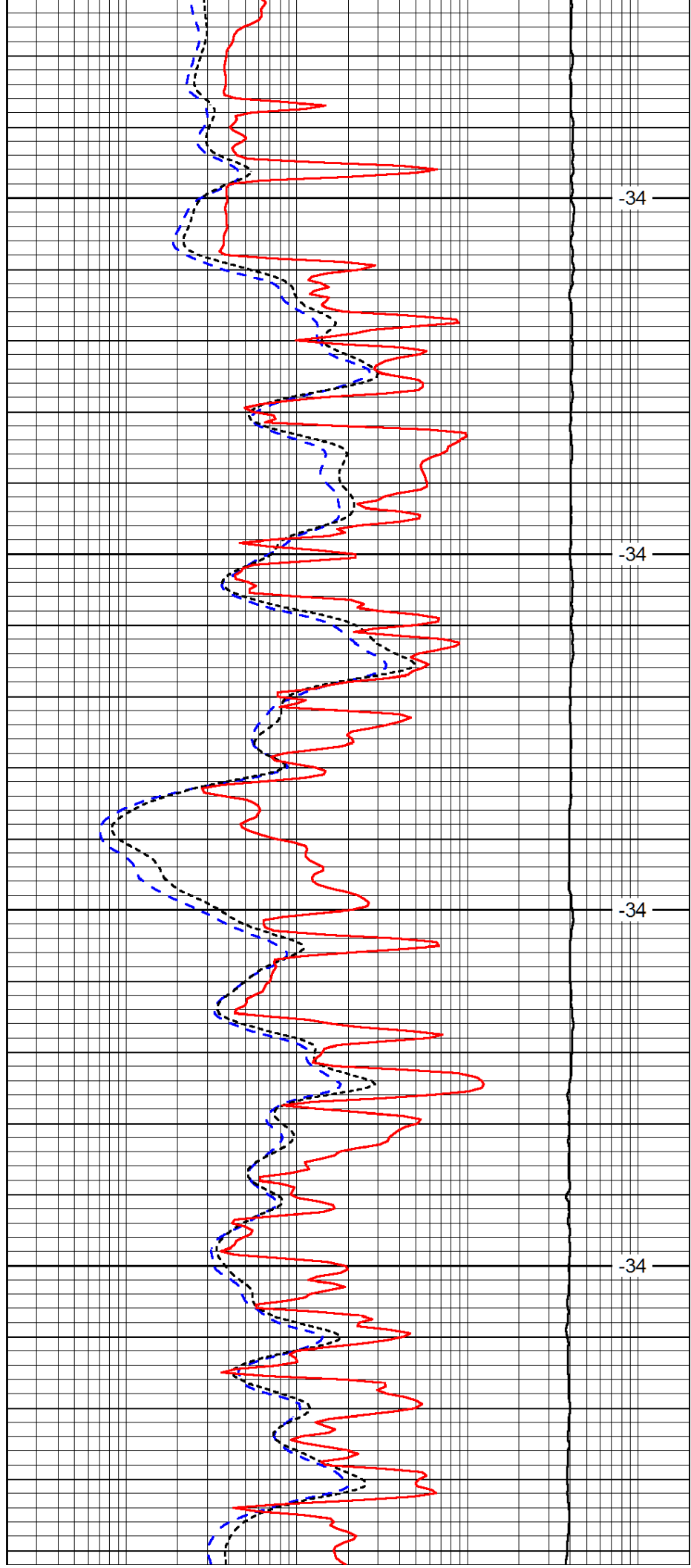


3350

3400

3450

3500

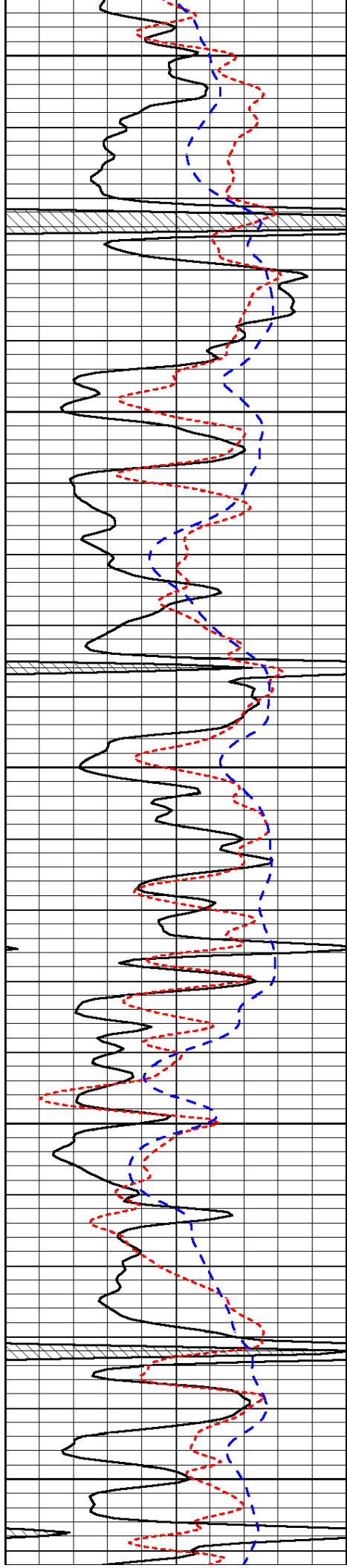


-34

-34

-34

-34



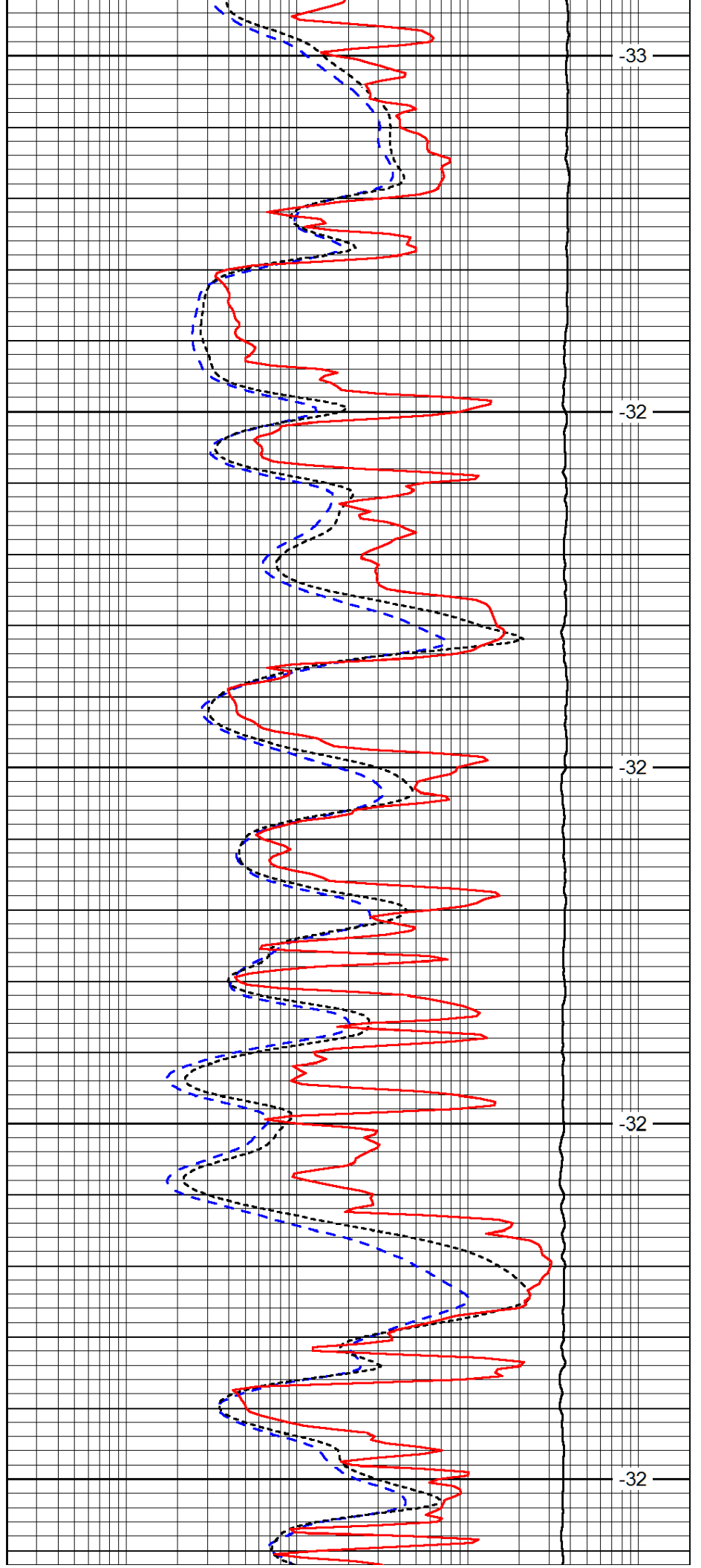
3550

3600

3650

3700

3750



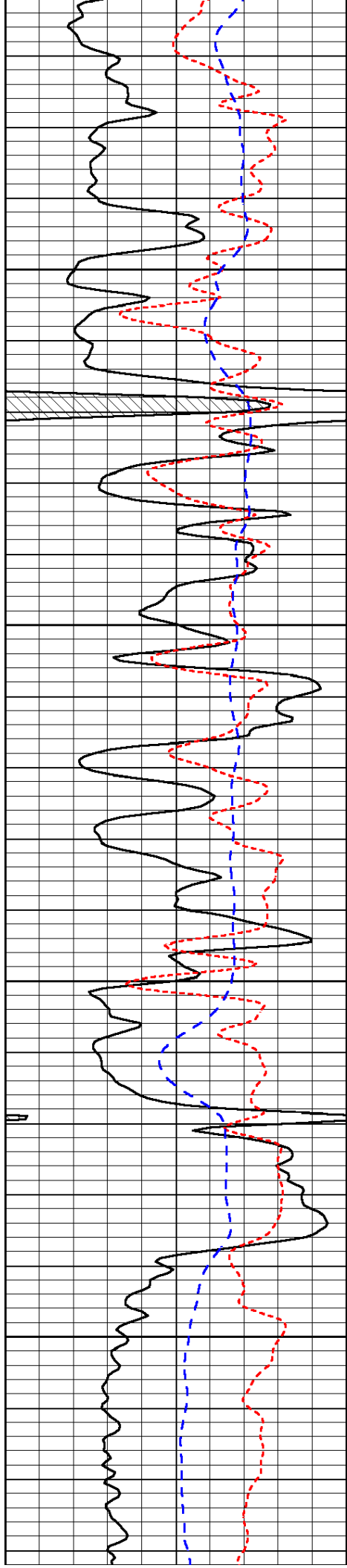
-33

-32

-32

-32

-32

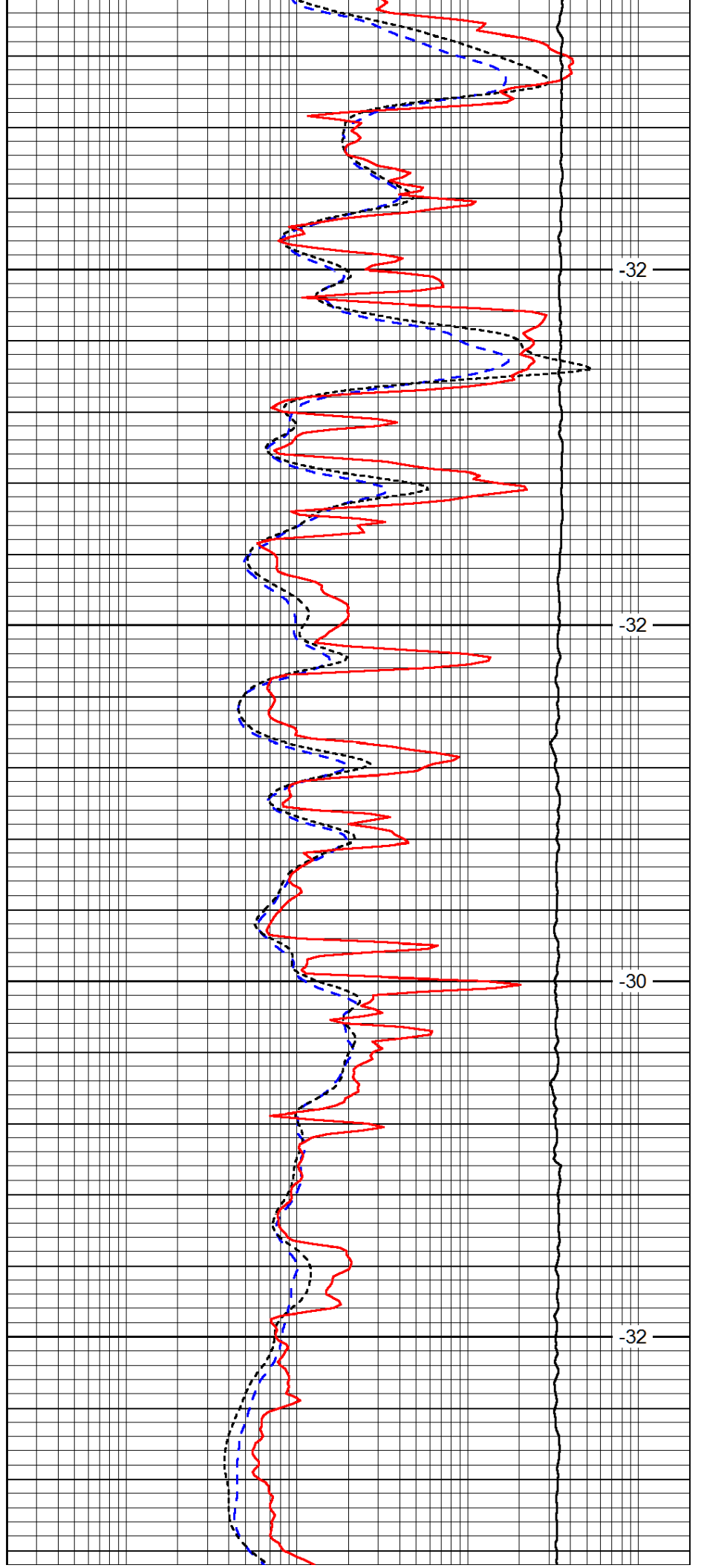


3800

3850

3900

3950

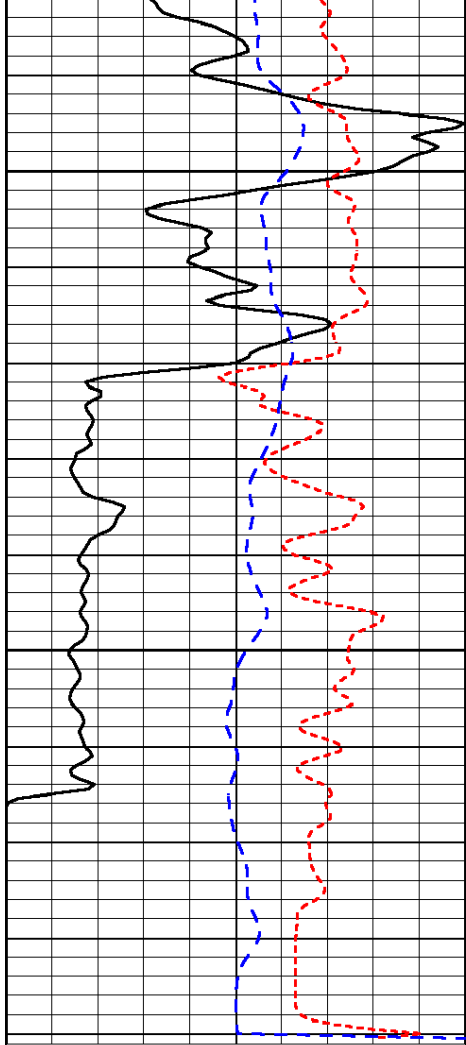


-32

-32

-30

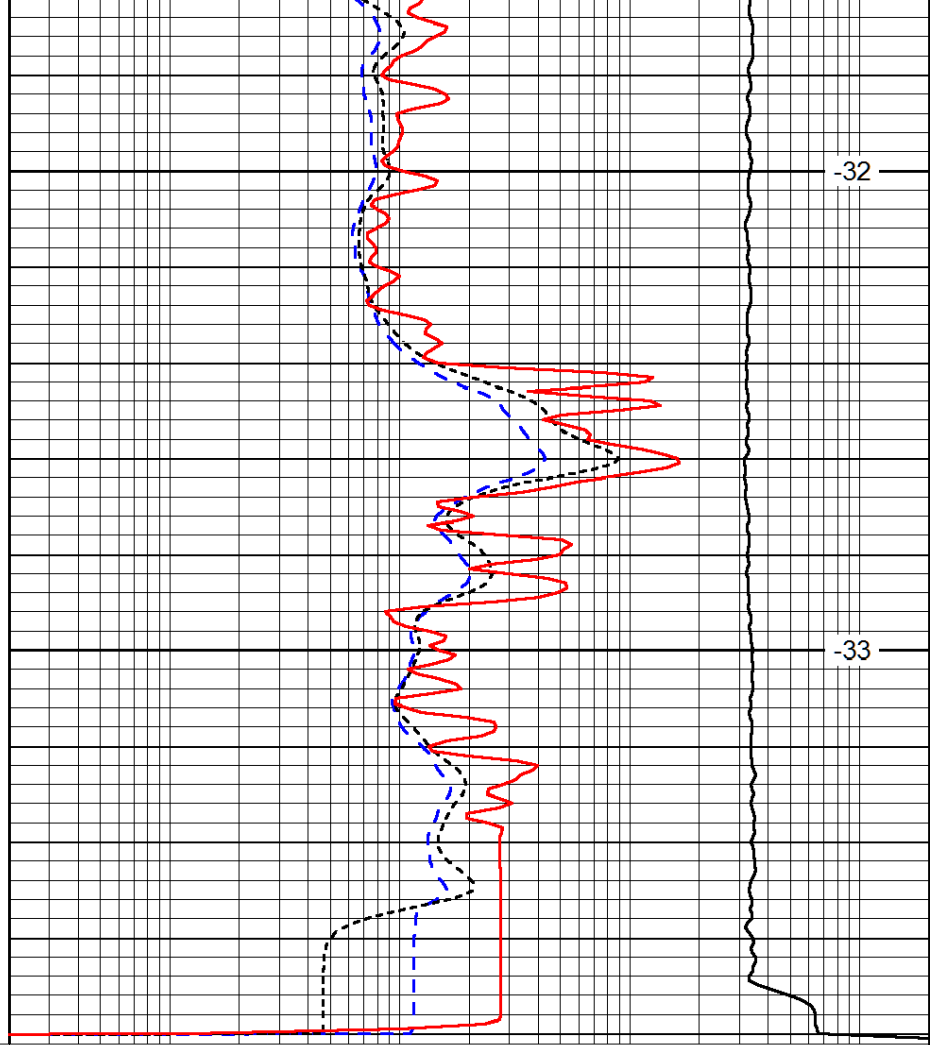
-32



4000

4050

0	Gamma Ray	150
-160	RxoRt	40
-200	SP (mV)	0



-32

-33

0.2	Deep Resistivity	2000
0.2	Medium Resistivity	2000
0.2	Shallow Resistivity	2000
10000	Line Tension	0

LSPD