



Pioneer Energy Services

Borehole Compensated Sonic Log

API No. 15-195-22982-00-00

Company **McElvain Energy, Inc.**
 Well **Spalsbury 3-2 #1**
 Field **Kohl West**
 County **Trego** State **Kansas**

Location **349' FSL & 2281' FEL**

Sec: 3 Twp: 12S Rge: 21W

Other Services
CNL/CDL
MEL/DIL

Permanent Datum **Ground Level** Elevation **2305**
 Log Measured From **Kelly Bushing** 10 Ft. Above Perm. Datum
 Drilling Measured From **Kelly Bushing**

K.B. 2315
 D.F. G.L. 2305

Date	12/19/2014	
Run Number	Two	
Type Log	BHC Sonic	
Depth Driller	4084	
Depth Logger	4085	
Bottom Logged Interval	4074	
Top Logged Interval	250	
Type Fluid In Hole	Chemical	
Salinity, PPM CL	2700	
Density	9.3	
Level	Full	
Max. Rec. Temp. F	117	
Operating Rig Time	4 Hours	
Equipment -- Location	91 Hays	
Recorded By	D. Schmidt	
Witnessed By	Rodney Gonzales	

Borehole Record		Casing Record					
Run No	Bit	From	To	Size	Wgt.	From	To
One	12.25	00	292	8.625	23#	00	292
Two	7.875	292	TD				

<<< Fold Here >>>

All interpretations are opinions based on inferences from electrical or other measurements and we cannot and do not guarantee the accuracy or correctness of any interpretation, and we shall not, except in the case of gross or willful negligence on our part, be liable or responsible for any loss, costs, damages, or expenses incurred or sustained by anyone resulting from any interpretation made by any of our officers, agents or employees. These interpretations are also subject to our general terms and conditions set out in our current Price Schedule.

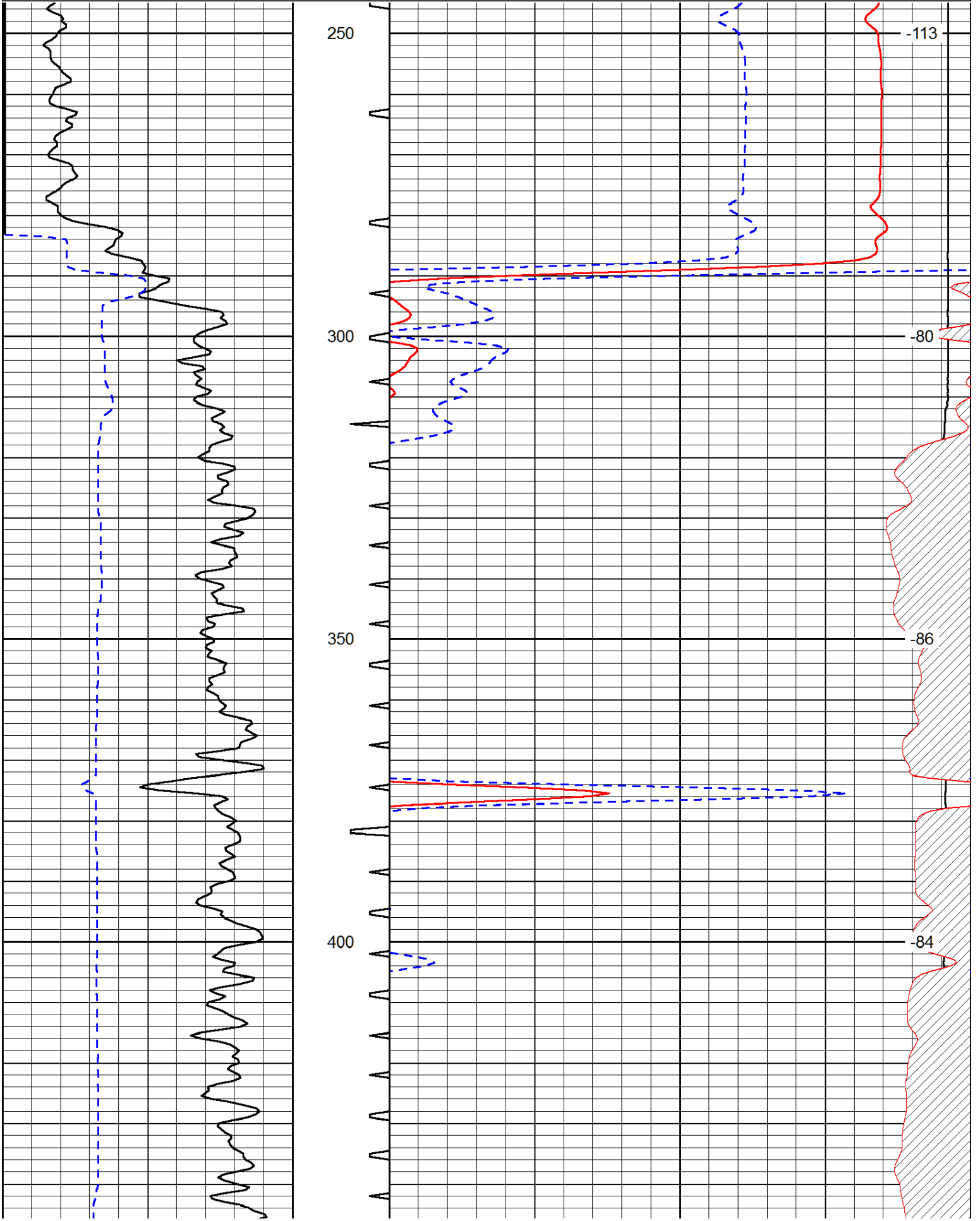
Comments

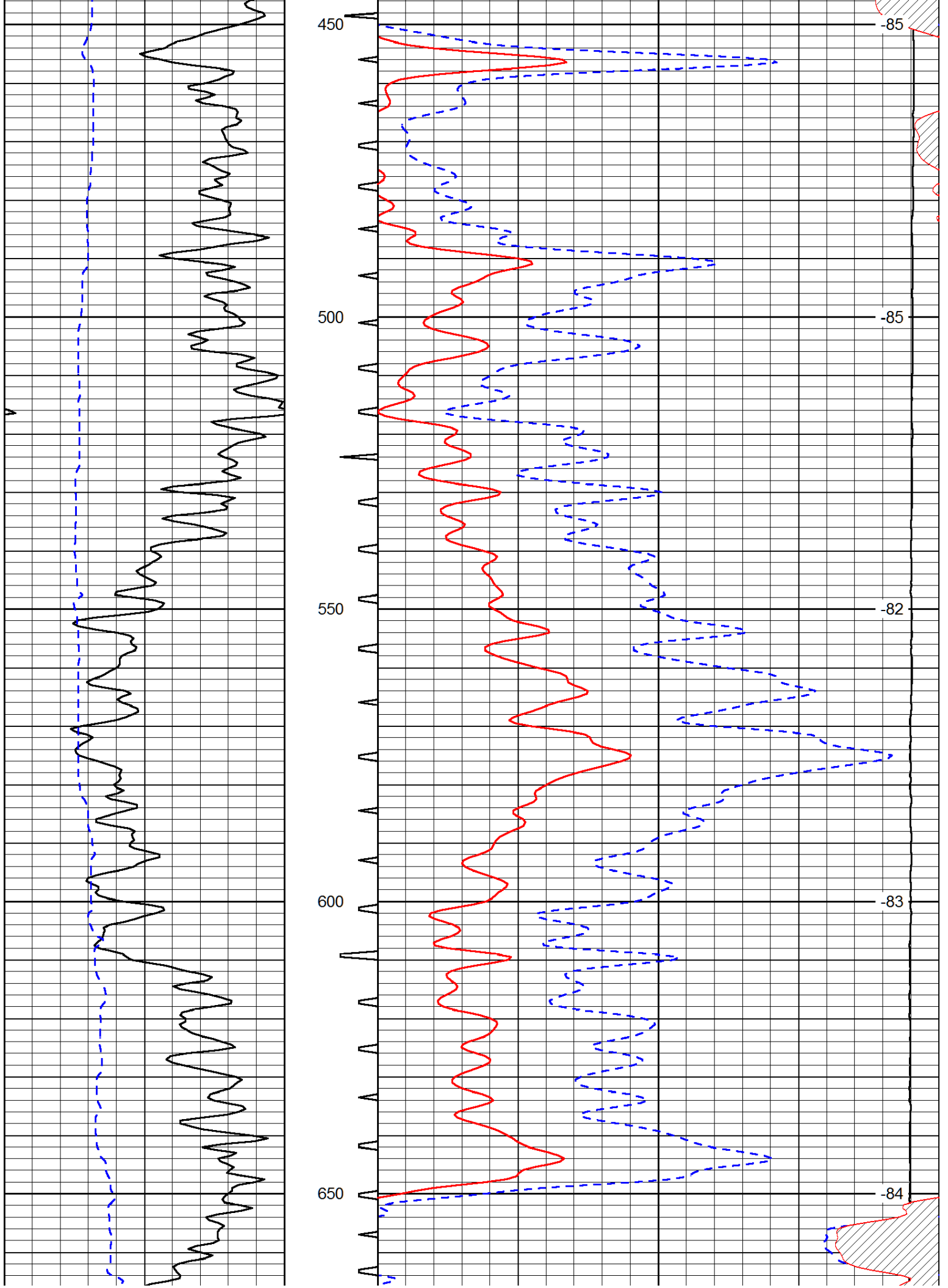
Thank you for using Log-Tech, Inc.
 (785) 625-3858

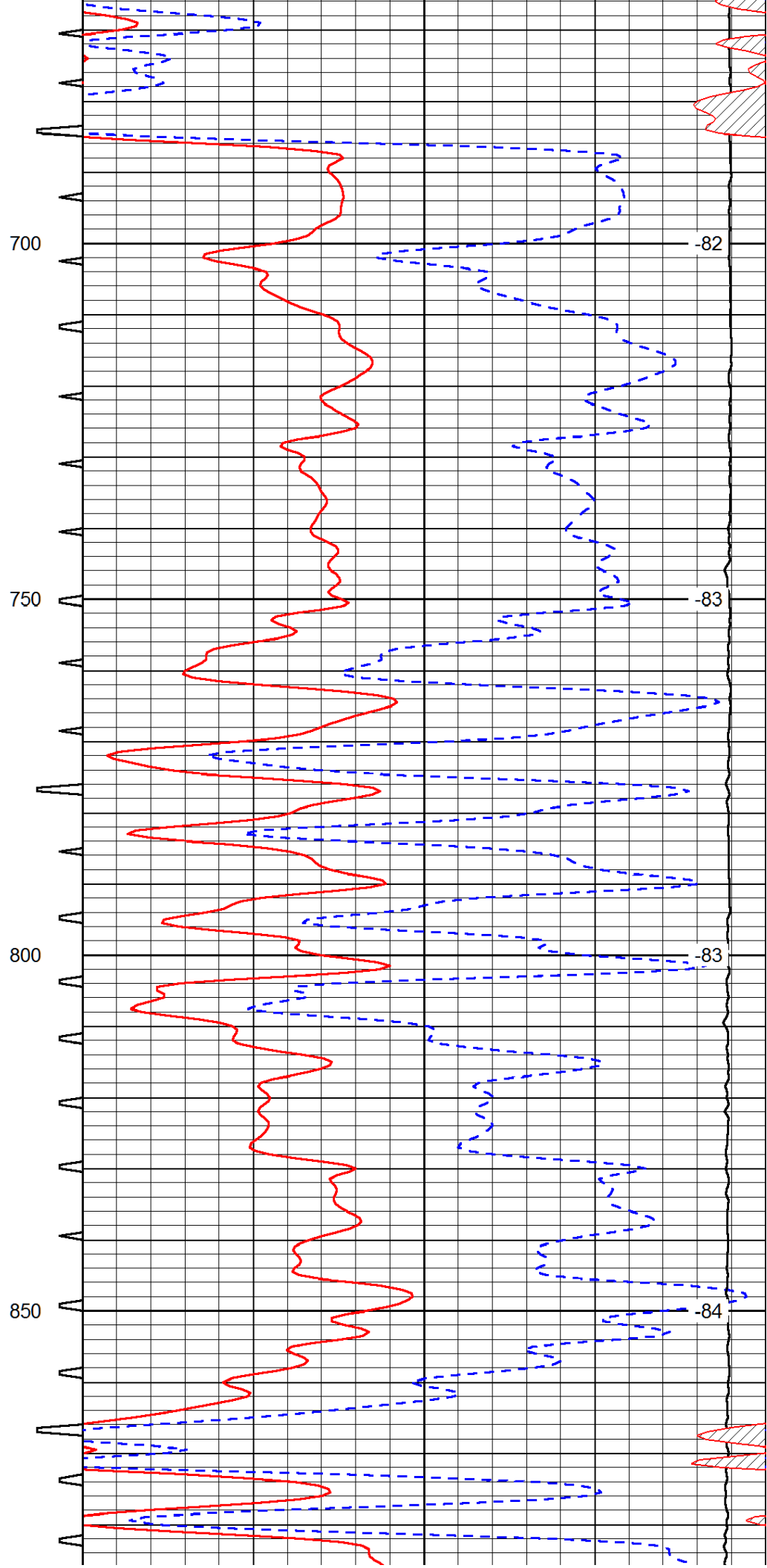
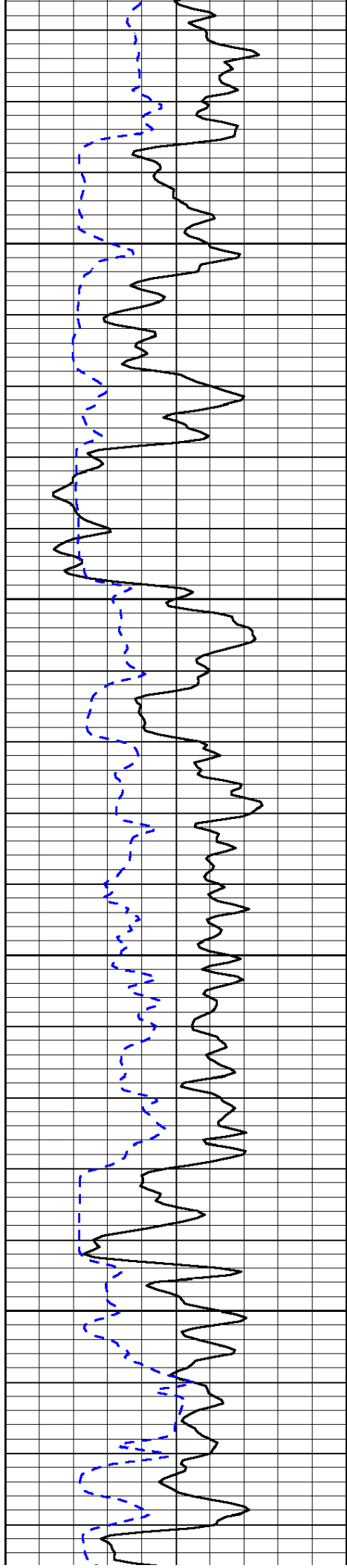
I-70 & Riga Rd,
 North to G Rd, 1/2 East,
 South into

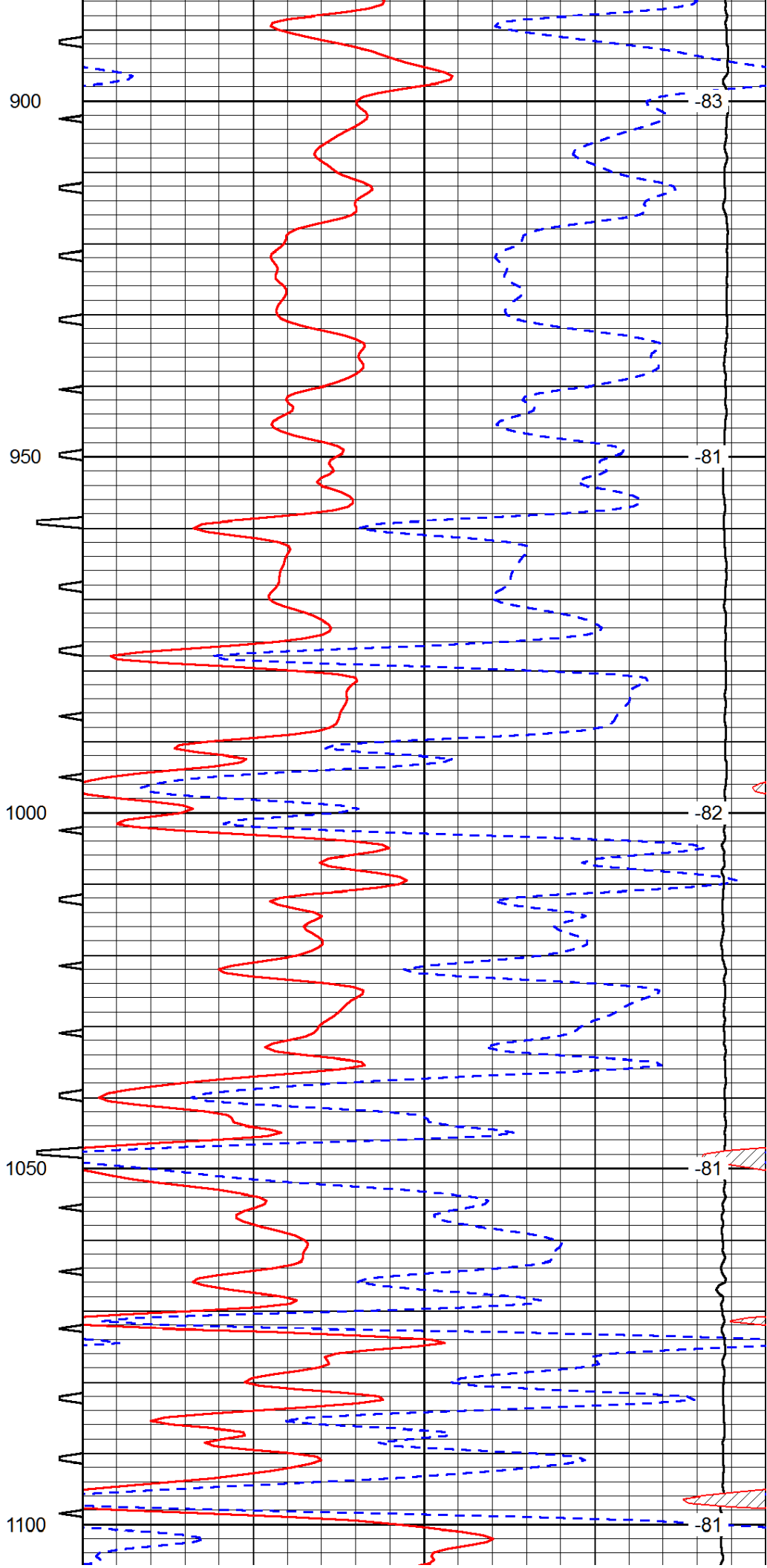
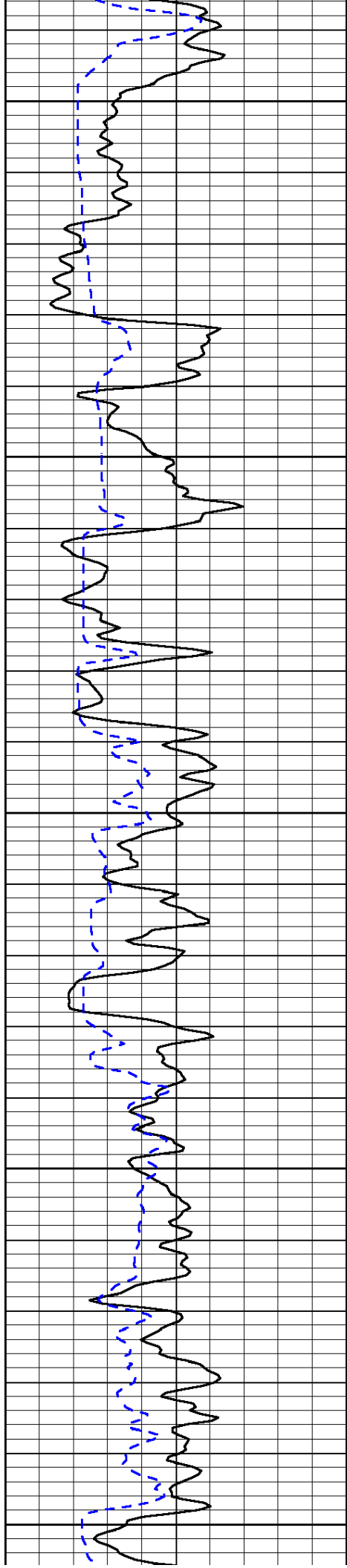
Database File: mcelvain_spalsbury_3-2_1hd.db
 Dataset Pathname: dil/mcstkml
 Presentation Format: sonic
 Dataset Creation: Fri Dec 19 14:16:02 2014
 Charted by: Depth in Feet scaled 1:240

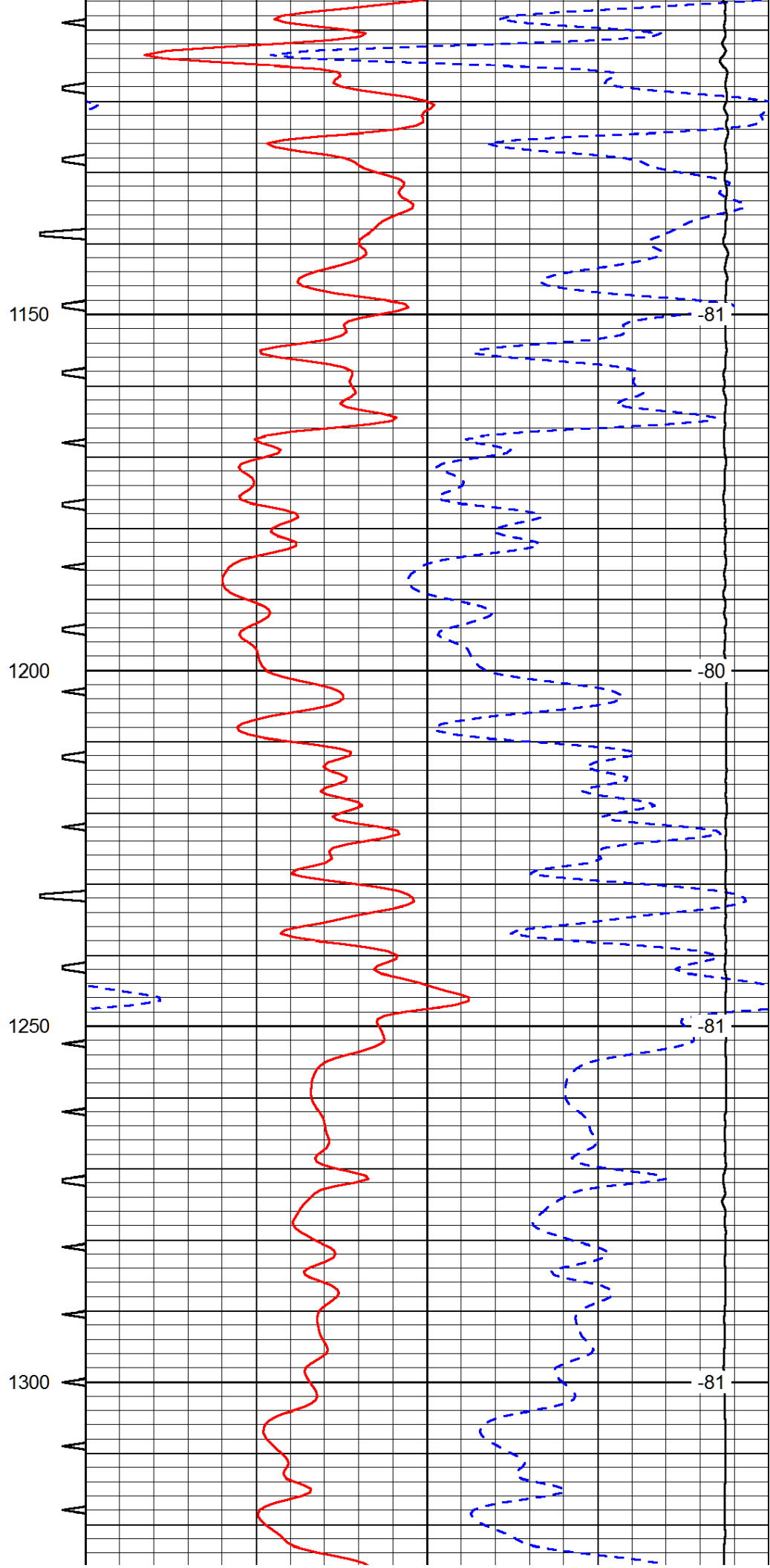
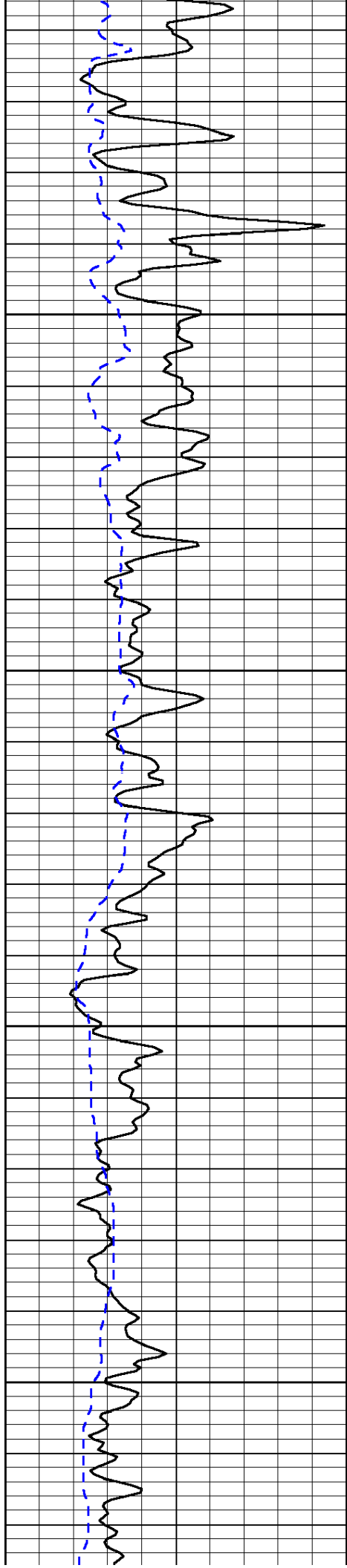
0	Gamma Ray	150	Sonic Int	140	Delta Time (usec/ft)	40
150	Gamma Ray	300	5	0	Sonic Porosity	-10
6	dCAL (GAPI)	16		15000	LTEN (lb)	0
						LSPD

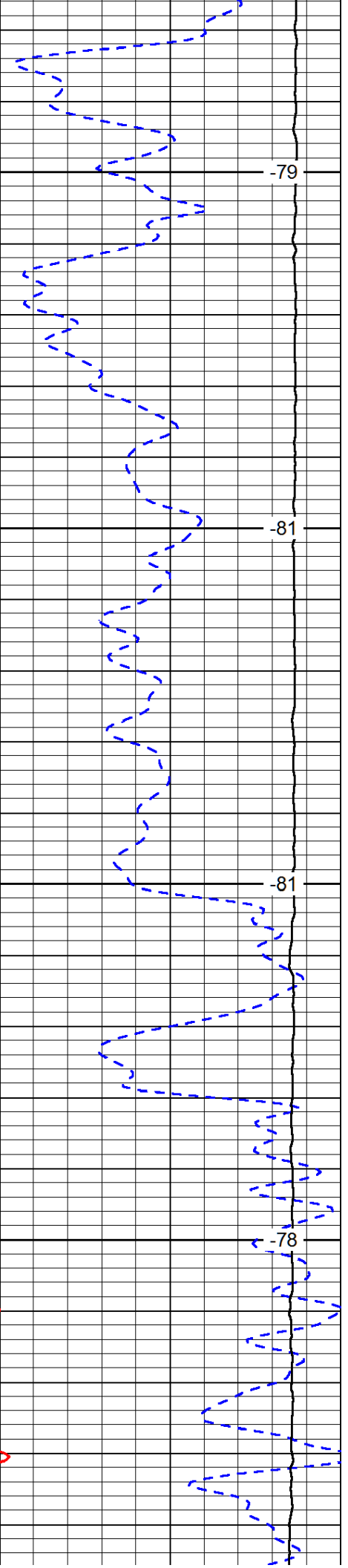
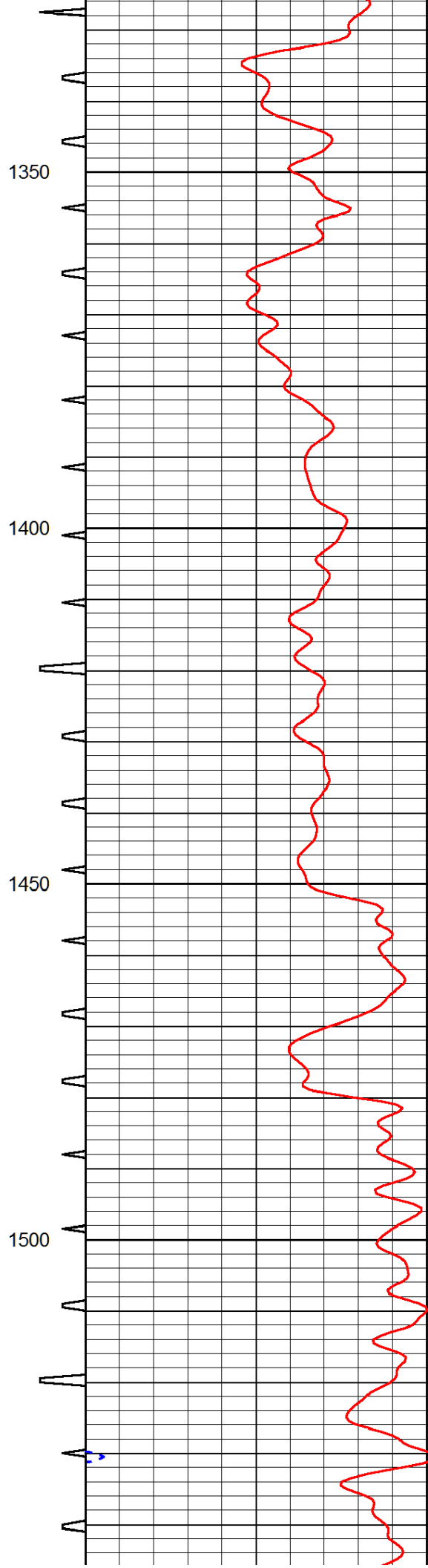
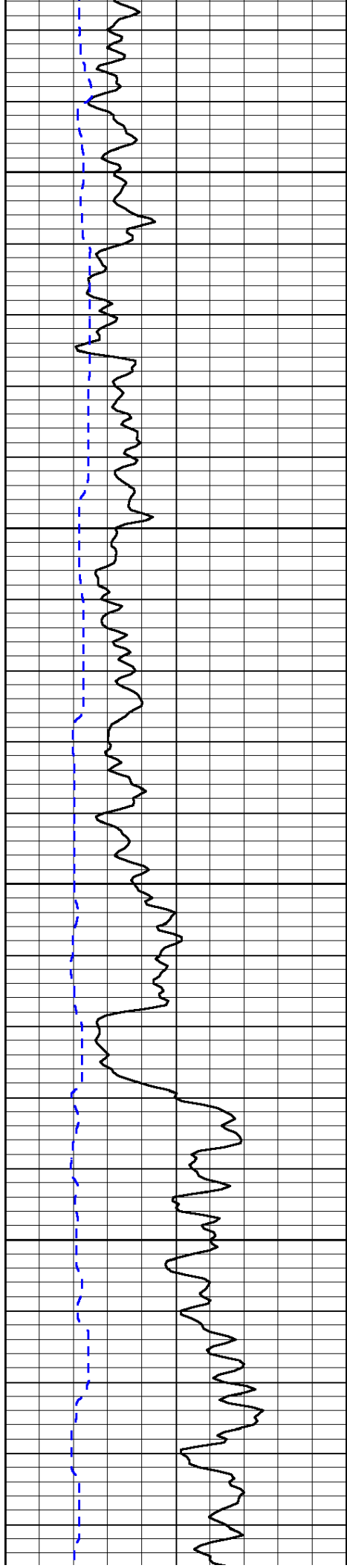












1350

-79

1400

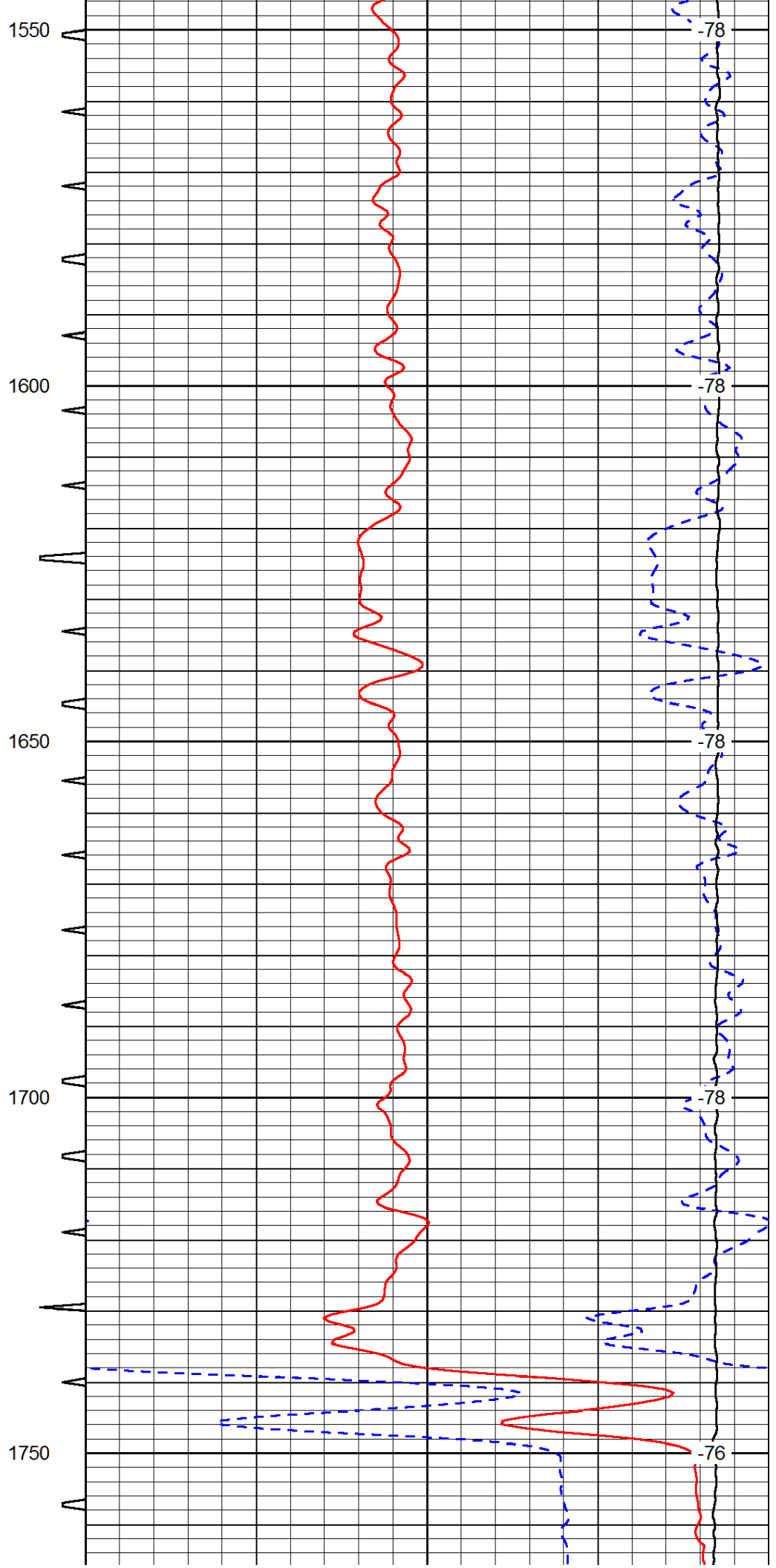
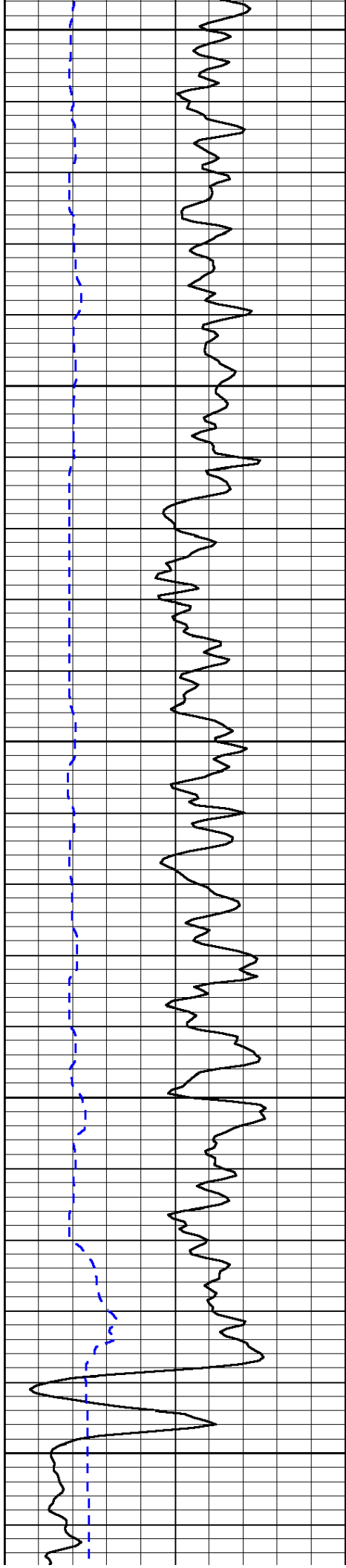
-81

1450

-81

1500

-78



1550

1600

1650

1700

1750

-78

-78

-78

-78

-76

