



**COMPLETION
& PRODUCTION
SERVICES CO.**

**MICRO
LOG**

Company CHARTER ENERGY, INC.
Well LEWIS #1
Field WILDCAT
County GOVE
State KANSAS

Company CHARTER ENERGY, INC.
Well LEWIS #1
Field WILDCAT
County GOVE State KANSAS

Location: API # : 15-063-22228-0000
2495' FSL & 2575' FEL
NW NW NW SE
SEC 7 TWP 13S RGE 29W
Permanent Datum GROUND LEVEL Elevation 2747
Log Measured From KELLY BUSHING 6' A.G.L.
Drilling Measured From KELLY BUSHING
Other Services
CDL/CNL
DIL/SON
Elevation
K.B. 2763
D.F. 2751
G.L. 2747

Date	10/28/14		
Run Number	TWO		
Depth Driller	4500		
Depth Logger	4502		
Bottom Logged Interval	4484		
Top Log Interval	3600		
Casing Driller	8 5/8" @ 264		
Casing Logger	260		
Bit Size	7 7/8"		
Type Fluid in Hole	CHEMICAL MUD	CHLORIDES 2200 PPM	
Density / Viscosity	9.3/52		
pH / Fluid Loss	8.0/8.8		
Source of Sample	FLOWLINE		
Rm @ Meas. Temp	1.0 @ 70F		
Rmt @ Meas. Temp	.75 @ 70F		
Rmc @ Meas. Temp	1.20 @ 70F		
Source of Rmf / Rmc	MEASUREMENT		
Rm @ BHT	.58 @ 120F		
Time Circulation Stopped	2 HOURS		
Time Logger on Bottom			
Maximum Recorded Temperature	120F		
Equipment Number	4010		
Location	HAYS, KANSAS		
Recorded By	JASON CAPPELLUCCI		
Witnessed By	KURT TALBOTT		

<<< Fold Here >>>

All interpretations are opinions based on inferences from electrical or other measurements and we cannot and do not guarantee the accuracy or correctness of any interpretation, and we shall not, except in the case of gross or willful negligence on our part, be liable or responsible for any loss, costs, damages, or expenses incurred or sustained by anyone resulting from any interpretation made by any of our officers, agents or employees. These interpretations are also subject to our general terms and conditions set out in our current Price Schedule.

Comments

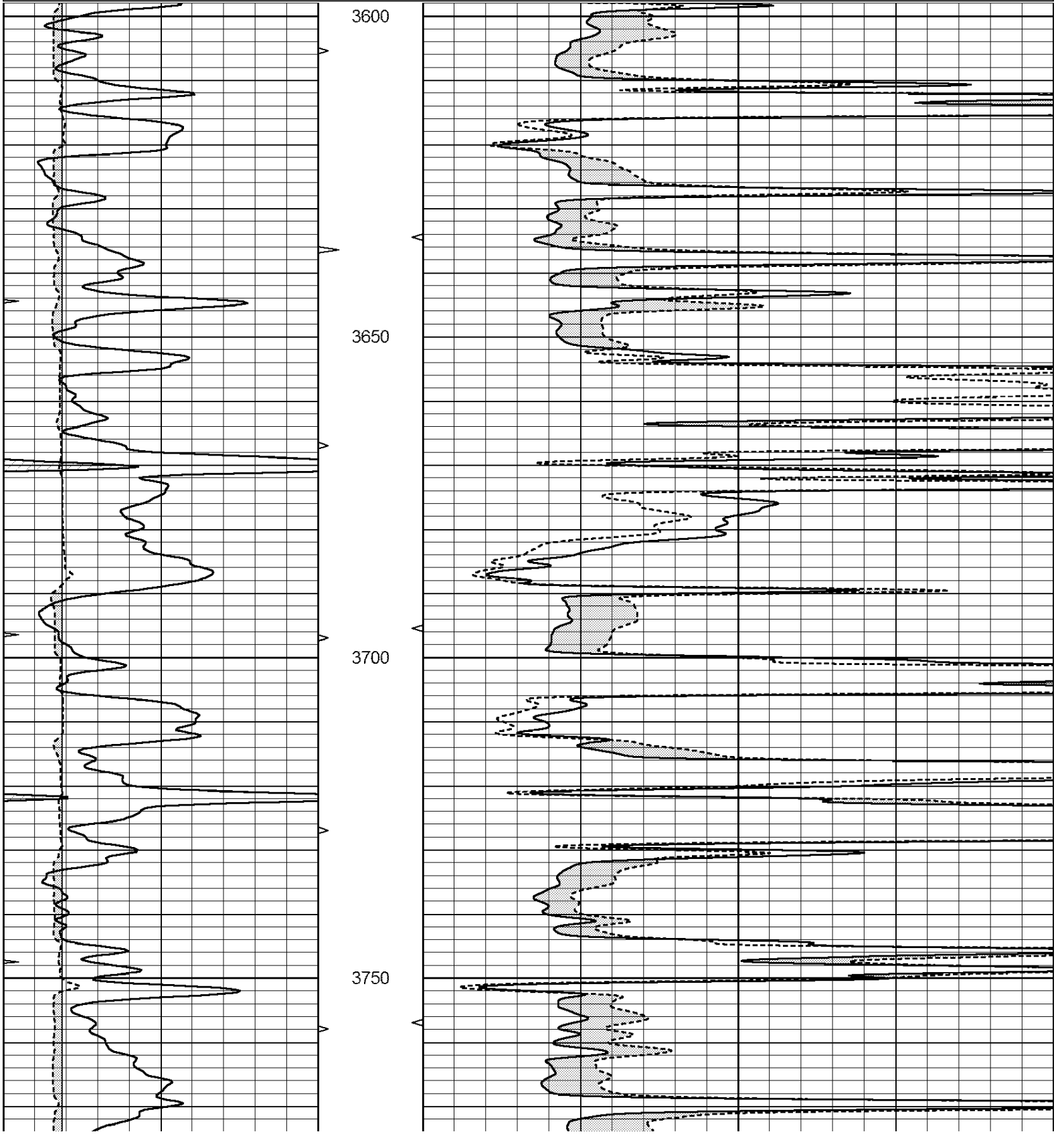
THANK YOU FOR USING NABORS, HAYS, KS. (785) 628-6395
DIRECTIONS:
GOVE, KS. - 6 WEST TO RD. 34 - 1 1/2 SOUTH - 1/2 EAST - NORTH INTO THRU GATE

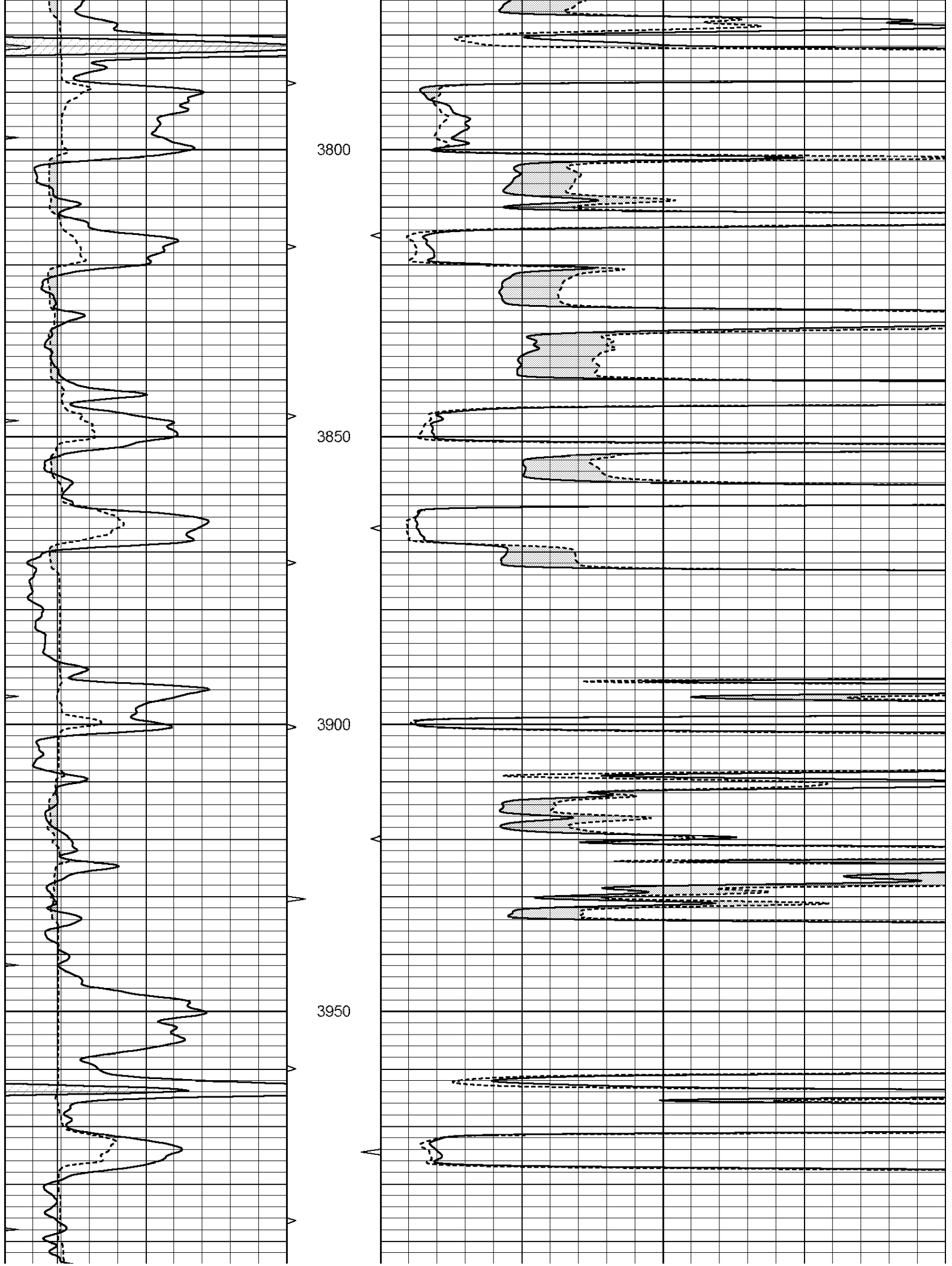


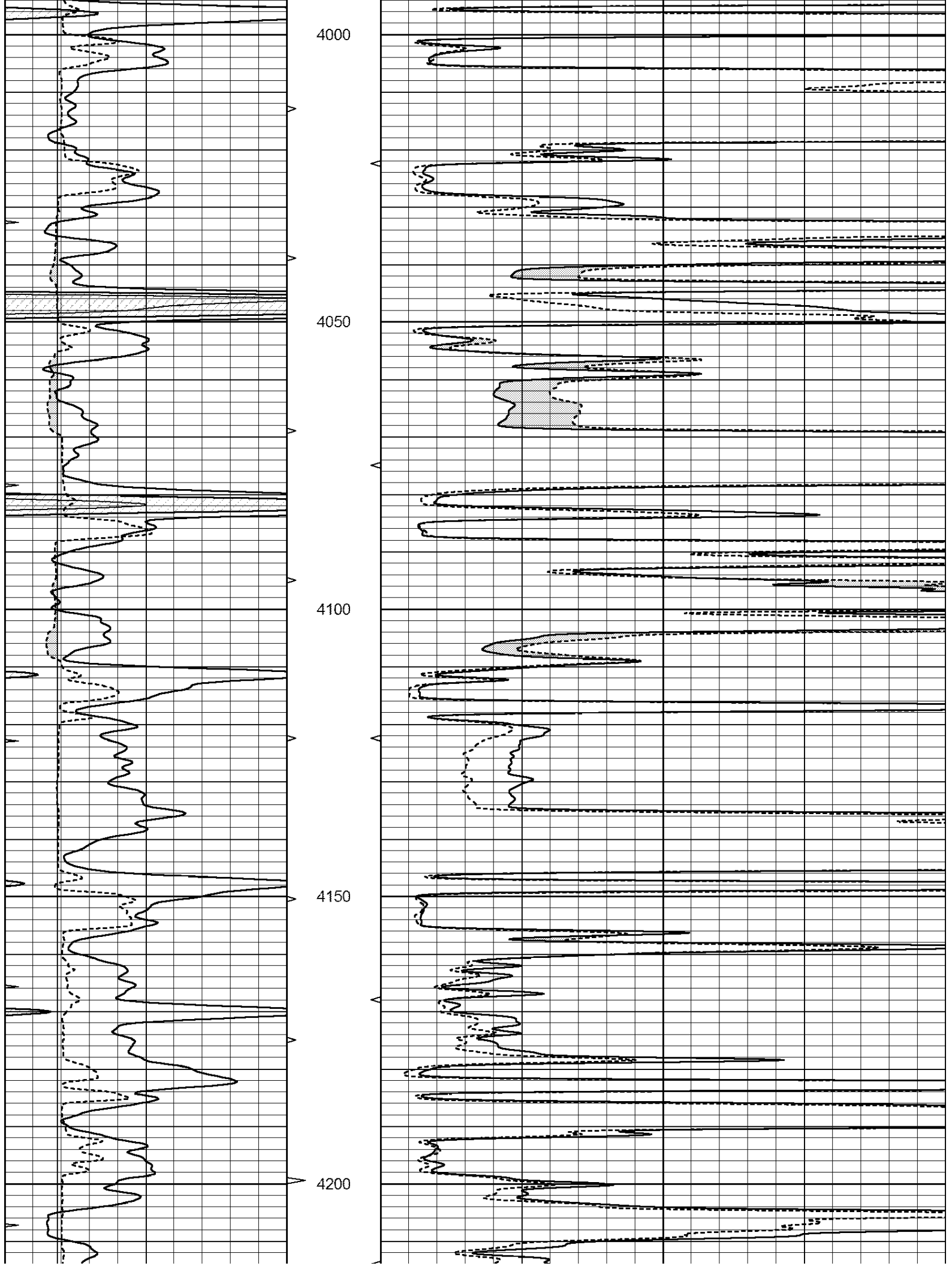
MAIN SECTION

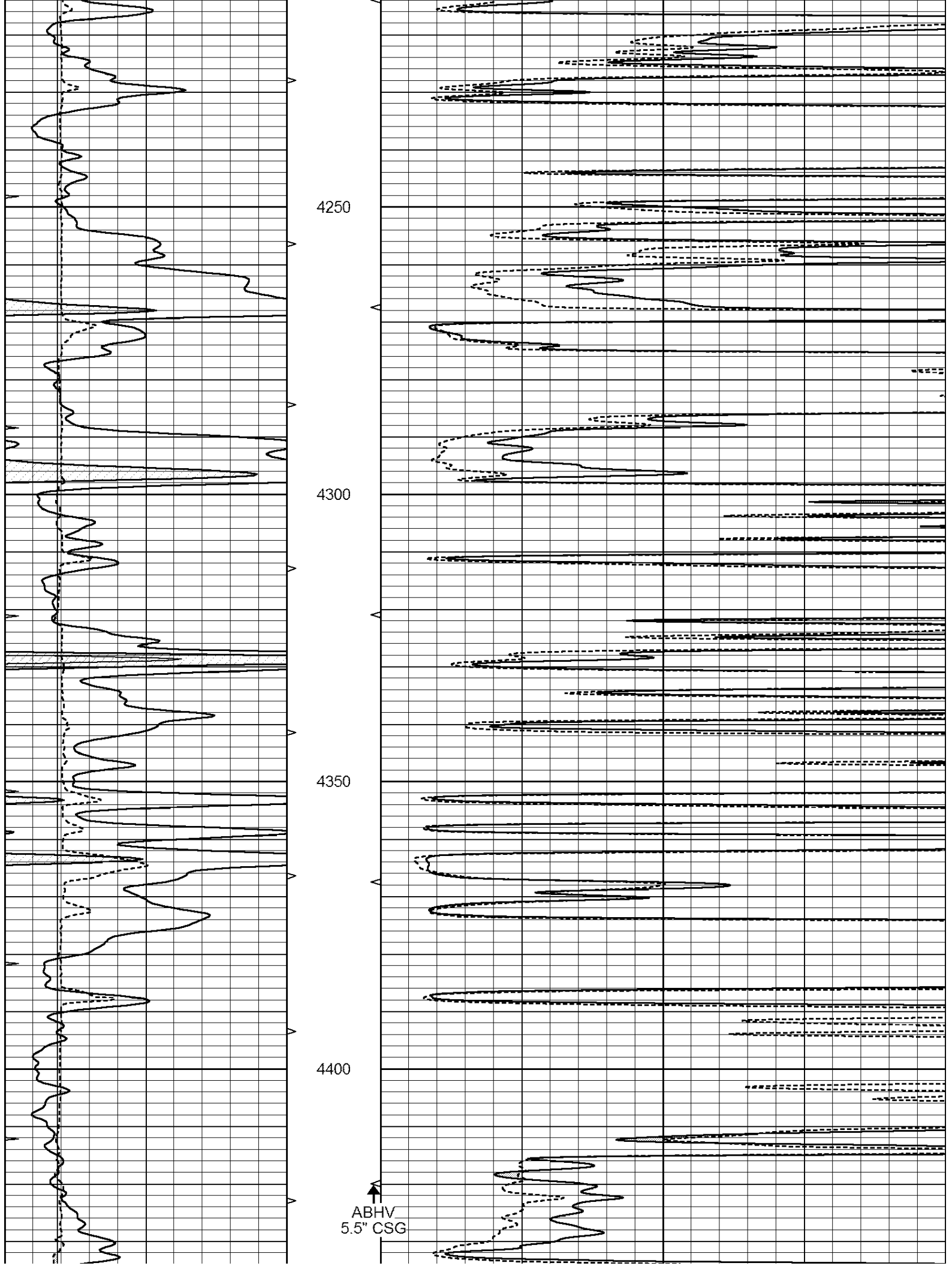
Database File: 26219ddn.db
 Dataset Pathname: pass6.1
 Presentation Format: _micro
 Dataset Creation: Tue Oct 28 07:00:04 2014 by Calc Open-Cased 090629
 Charted by: Depth in Feet scaled 1:240

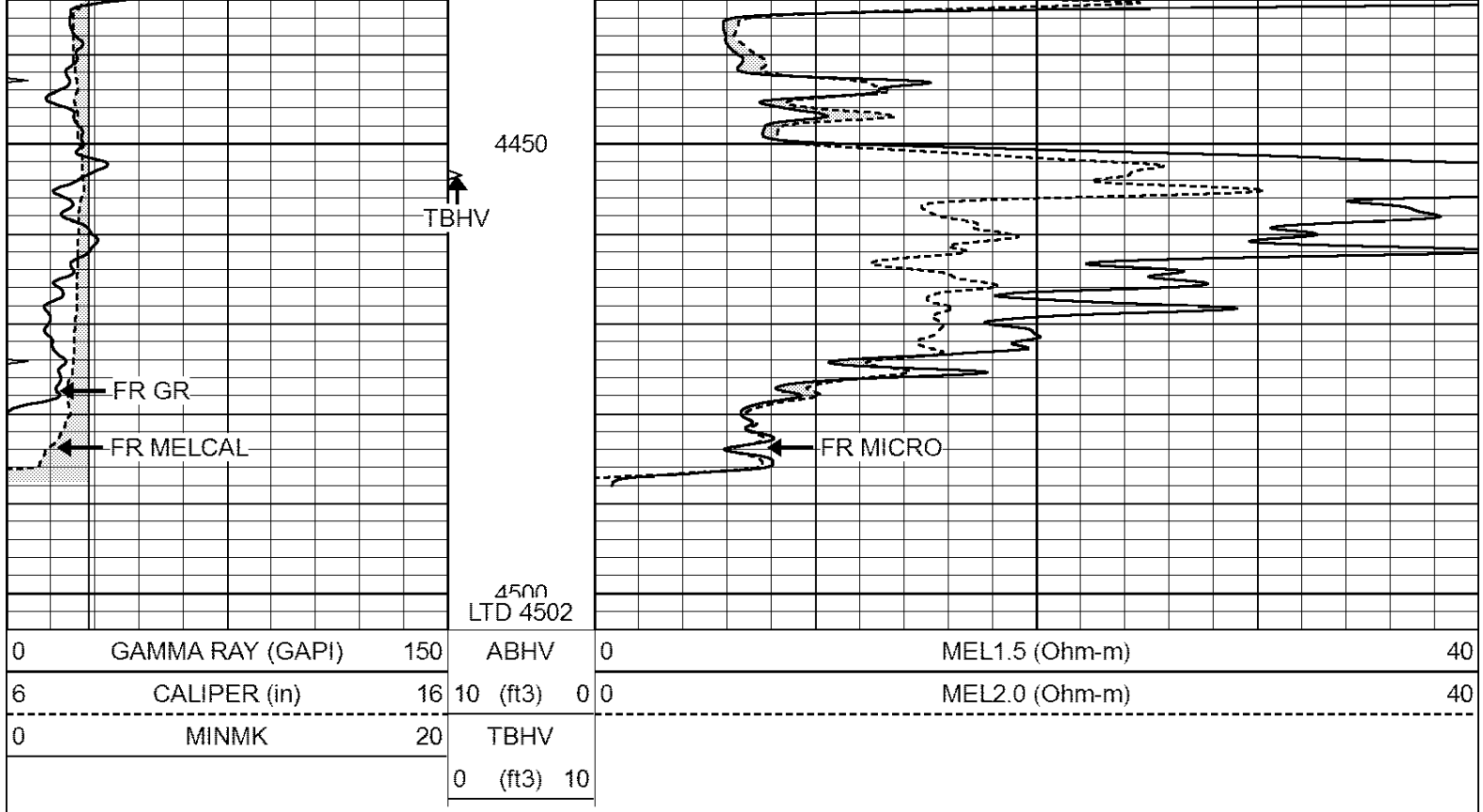
0	GAMMA RAY (GAPI)	150	ABHV	0	MEL1.5 (Ohm-m)	40
6	CALIPER (in)	16	10 (ft3)	0	MEL2.0 (Ohm-m)	40
0	MINMK	20	TBHV			
			0 (ft3)	10		







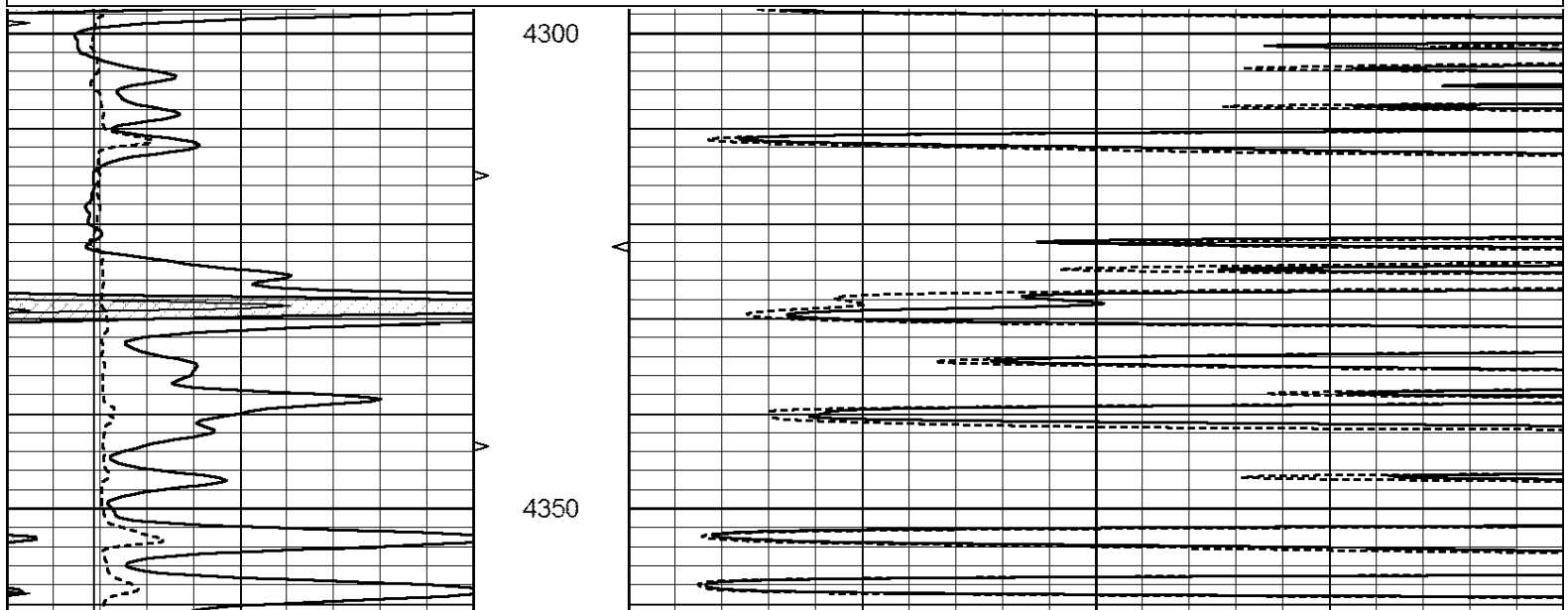


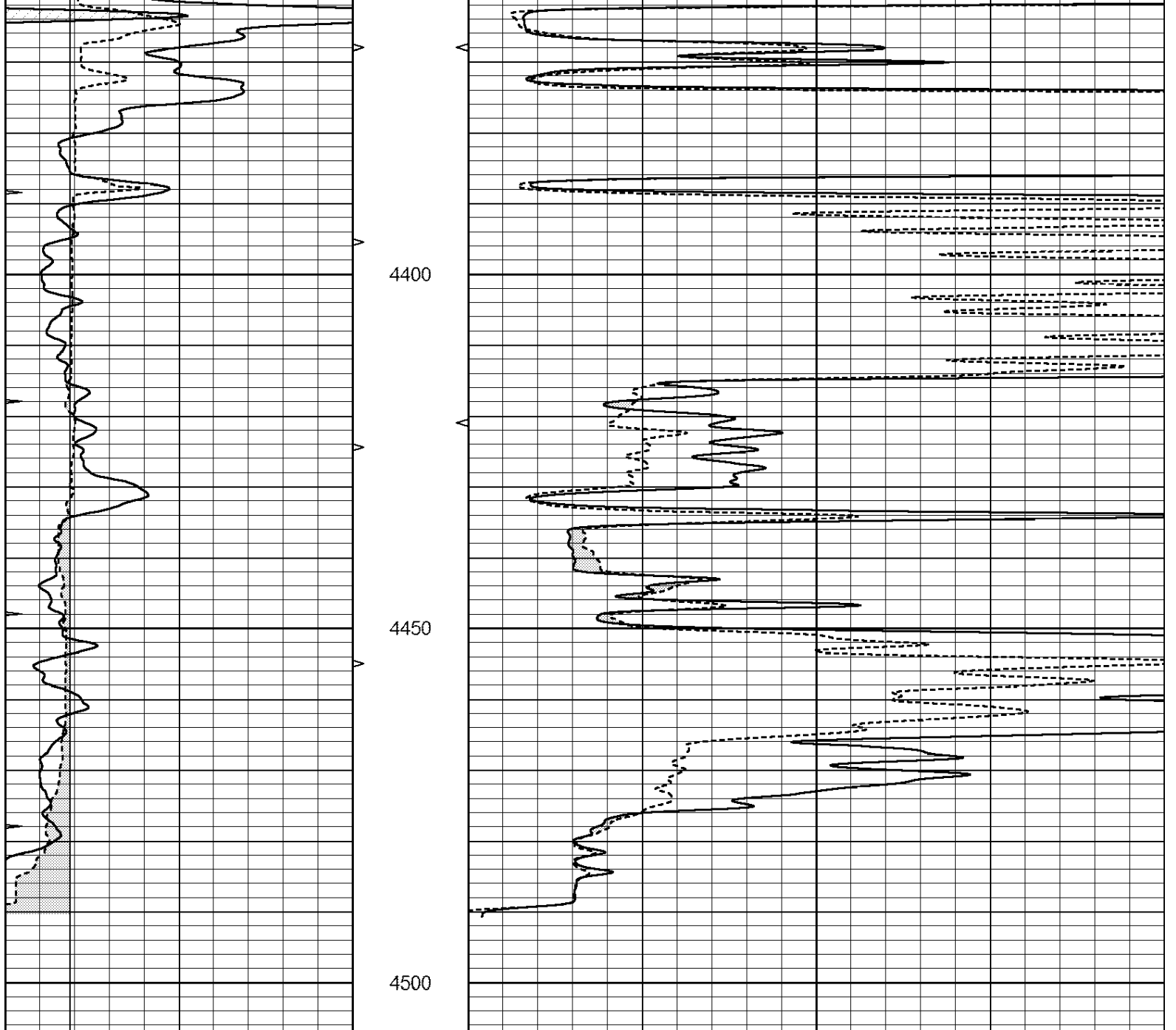


REPEAT SECTION

Database File: 26219ddn.db
 Dataset Pathname: pass5.1
 Presentation Format: _micro
 Dataset Creation: Tue Oct 28 06:58:55 2014 by Calc Open-Cased 090629
 Charted by: Depth in Feet scaled 1:240

0	GAMMA RAY (GAPI)	150	ABHV	0	MEL1.5 (Ohm-m)	40
6	CALIPER (in)	16	10 (ft3)	0	MEL2.0 (Ohm-m)	40
0	MINMK	20	TBHV			
			0 (ft3)	10		





0	GAMMA RAY (GAPI)	150	ABHV	0	MEL1.5 (Ohm-m)	40
6	CALIPER (in)	16	10 (ft3)	0	MEL2.0 (Ohm-m)	40
0	MINMK	20	TBHV			
			0 (ft3)	10		

Calibration Report

Database File: 26219ddn.db
 Dataset Pathname: pass5.1
 Dataset Creation: Tue Oct 28 06:58:55 2014 by Calc Open-Cased 090629

MICRO Calibration Report

Serial Number: MICRO3
 Tool Model: PROBE
 Performed: Thu Nov 17 03:06:31 2011

Caliper Calibration: Gain=3.916 Offset=-9.671

References Low Cal High Cal
 8.000 14.000

Readings	4.257	5.789
1.5" Calibration:	Gain=130.000	Offset=0.800
References	Low Cal 0.000	High Cal 20.000
Readings	0.004	0.228

2" Calibration:	Gain=200.553	Offset=-1.220
References	Low Cal 0.000	High Cal 20.000
Readings	0.005	0.175

Gamma Ray Calibration Report		
------------------------------	--	--

Serial Number:	GR6	
Tool Model:	OPEN	
Performed:	Sun Aug 17 15:23:09 2014	
Calibrator Value:	150.0	GAPI
Background Reading:	0.0	cps
Calibrator Reading:	276.0	cps
Sensitivity:	0.7000	GAPI/cps