



**COMPLETION
& PRODUCTION
SERVICES CO.**

**SONIC
LOG**

Company CHARTER ENERGY, INC.
Well LEWIS #1
Field WILDCAT
County GOVE
State KANSAS

Company CHARTER ENERGY, INC.
Well LEWIS #1
Field WILDCAT
County GOVE State KANSAS

Location: API # : 15-063-22228-0000
2495' FSL & 2575' FEL
NW NW NW SE
SEC 7 TWP 13S RGE 29W
Permanent Datum GROUND LEVEL Elevation 2747
Log Measured From KELLY BUSHING 6' A.G.L.
Drilling Measured From KELLY BUSHING
Elevation
K.B. 2753
D.F. 2751
G.L. 2747

Date	10/28/14
Run Number	TWO
Depth Driller	4500
Depth Logger	4502
Bottom Logged Interval	4492
Top Log Interval	250
Casing Driller	8 5/8" @ 264
Casing Logger	260
Bit Size	7 7/8"
Type Fluid in Hole	CHEMICAL MUD
Density / Viscosity	9.3/52
pH / Fluid Loss	8.0/8.8
Source of Sample	FLOWLINE
Rm @ Meas. Temp	1.0 @ 70F
Rmt @ Meas. Temp	.75 @ 70F
Rmc @ Meas. Temp	1.20 @ 70F
Source of Rmf / Rmc	MEASUREMENT
Rm @ BHT	.58 @ 120F
Time Circulation Stopped	2 HOURS
Time Logger on Bottom	
Maximum Recorded Temperature	120F
Equipment Number	4010
Location	HAYS, KANSAS
Recorded By	JASON CAPPELLUCCI
Witnessed By	KURT TALBOTT

<<< Fold Here >>>

All interpretations are opinions based on inferences from electrical or other measurements and we cannot and do not guarantee the accuracy or correctness of any interpretation, and we shall not, except in the case of gross or willful negligence on our part, be liable or responsible for any loss, costs, damages, or expenses incurred or sustained by anyone resulting from any interpretation made by any of our officers, agents or employees. These interpretations are also subject to our general terms and conditions set out in our current Price Schedule.

Comments

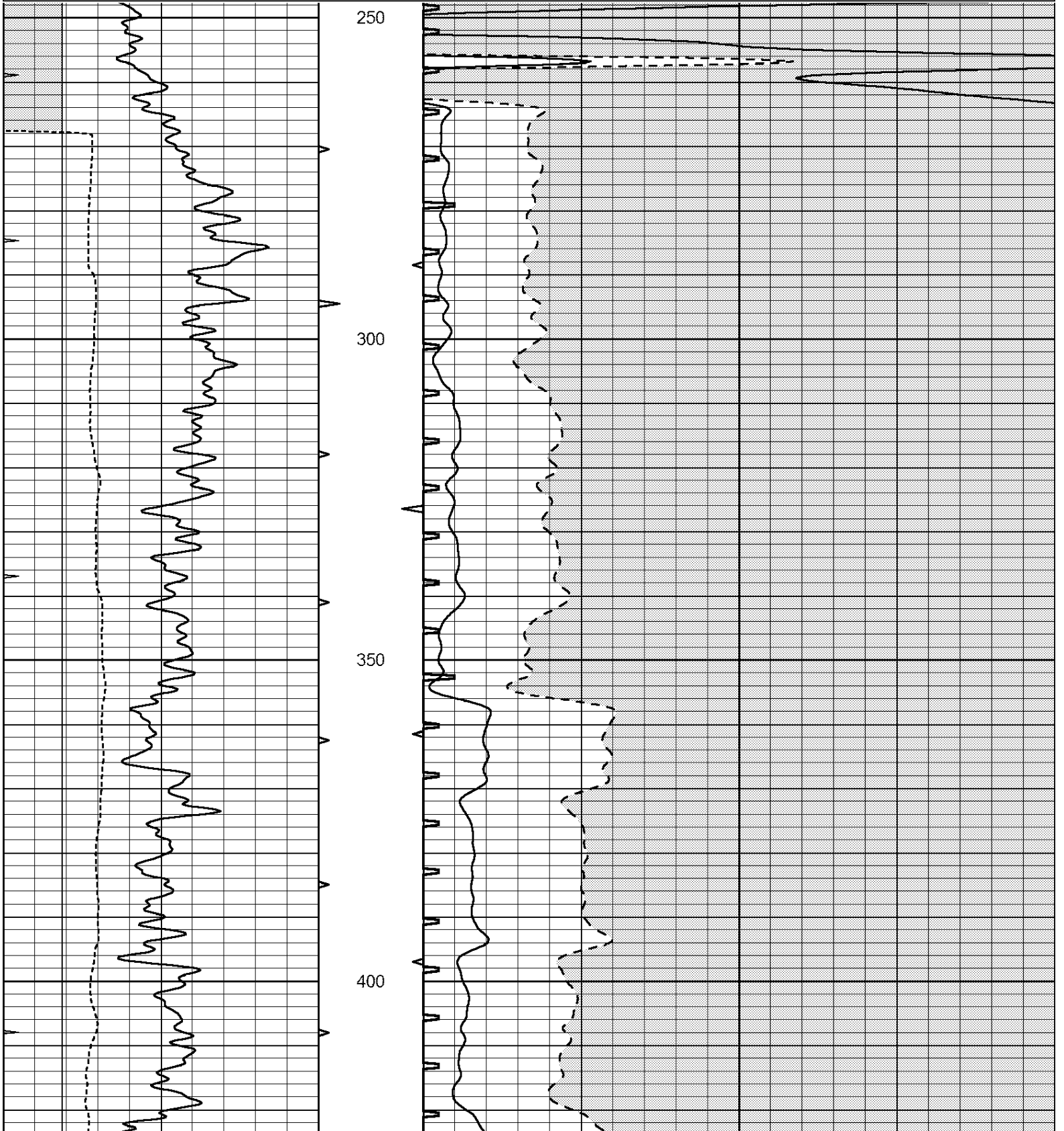
THANK YOU FOR USING NABORS, HAYS, KS. (785) 628-6395
DIRECTIONS:
GOVE, KS. - 6 WEST TO RD. 34 - 1 1/2 SOUTH - 1/2 EAST - NORTH INTO THRU GATE

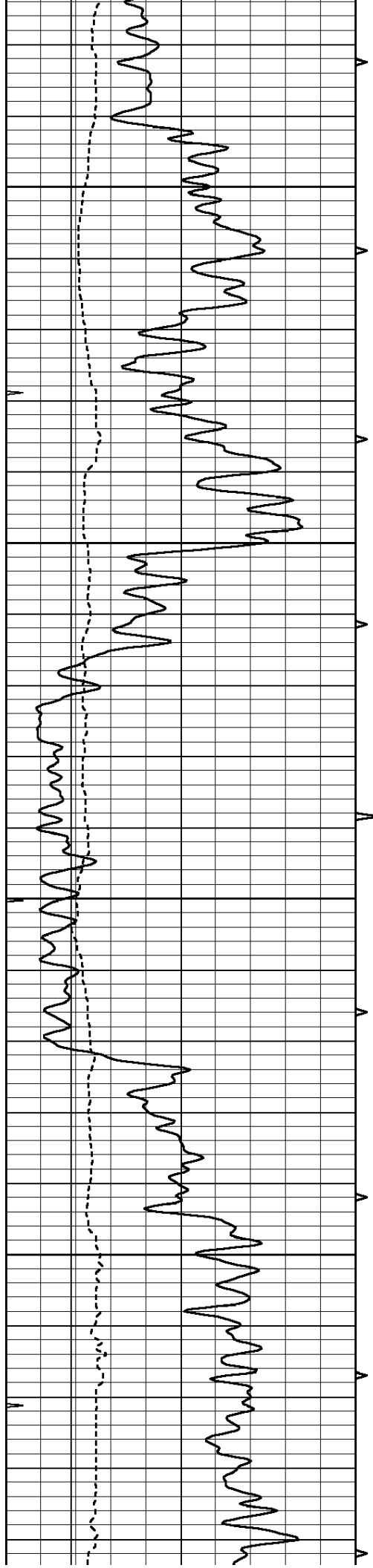


MAIN SECTION

Database File: 26219ddn.db
 Dataset Pathname: pass6.2
 Presentation Format: _slt
 Dataset Creation: Tue Oct 28 07:49:07 2014 by Calc Open-Cased 090629
 Charted by: Depth in Feet scaled 1:240

0	GAMMA RAY (GAPI)	150	ABHV	140	DELTA TIME (usec/ft)	40
6	CALIPER (in)	16	10 (ft3) 0	30	SONIC POROSITY (pu)	-10
0	MINMK	20	TBHV	0	ITT (msec)	20
			0 (ft3) 10			



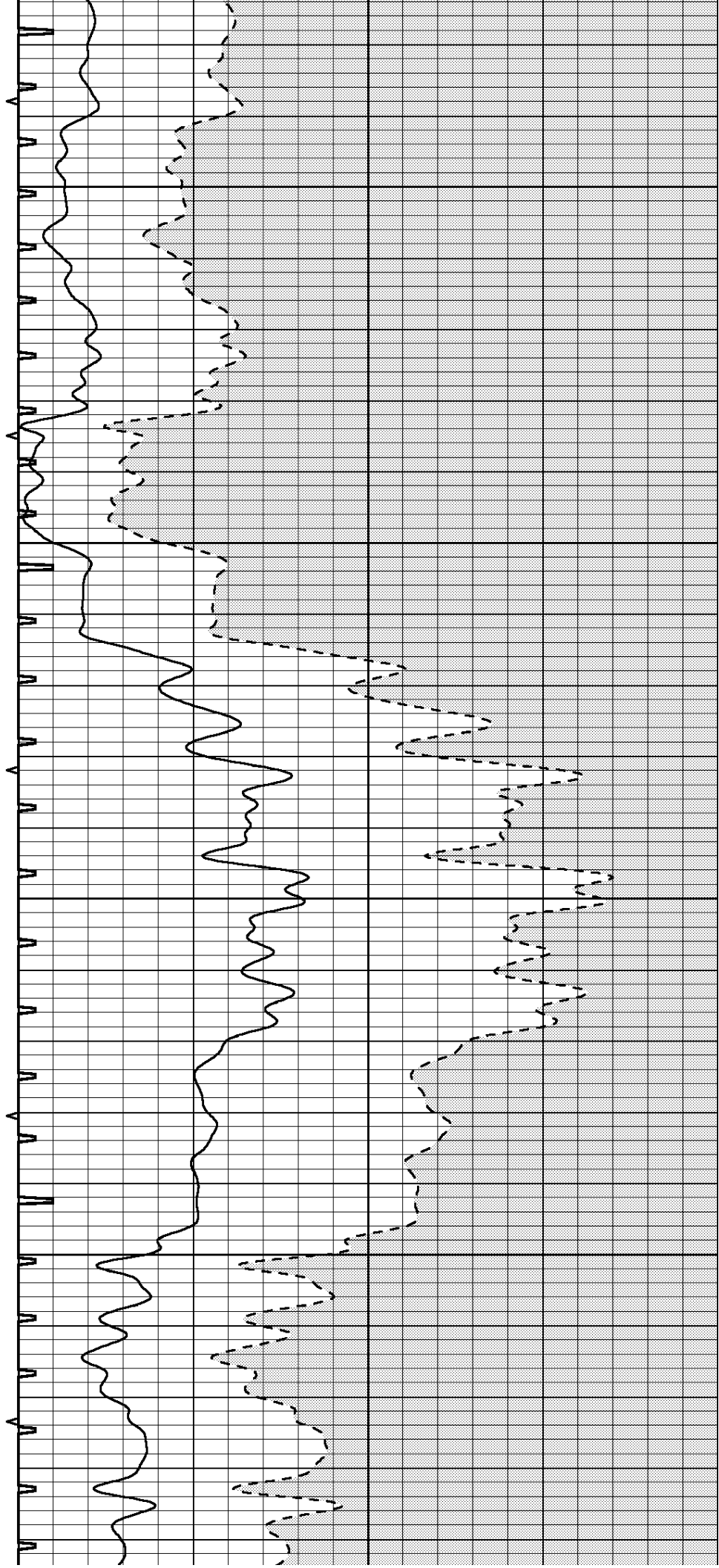


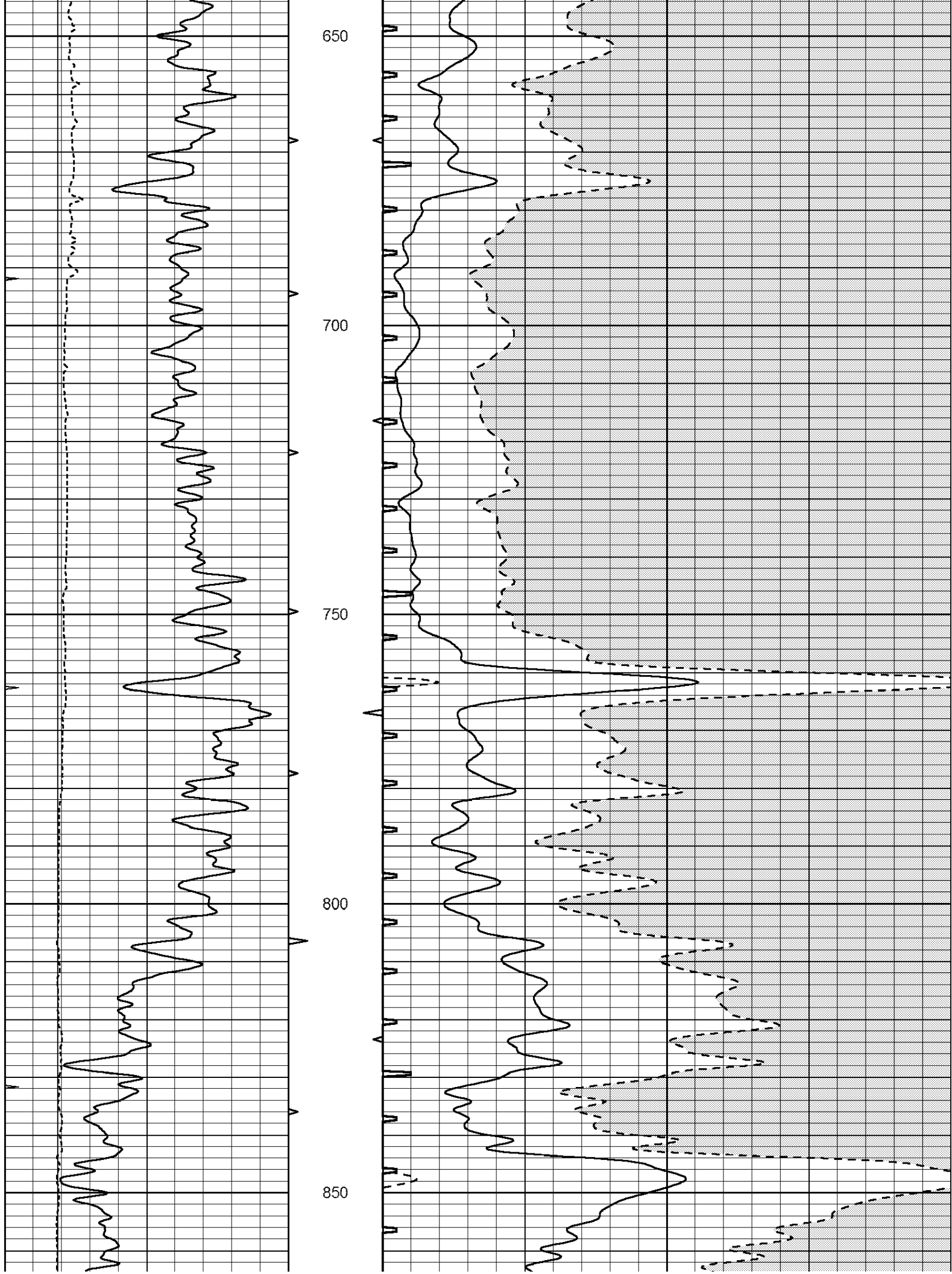
450

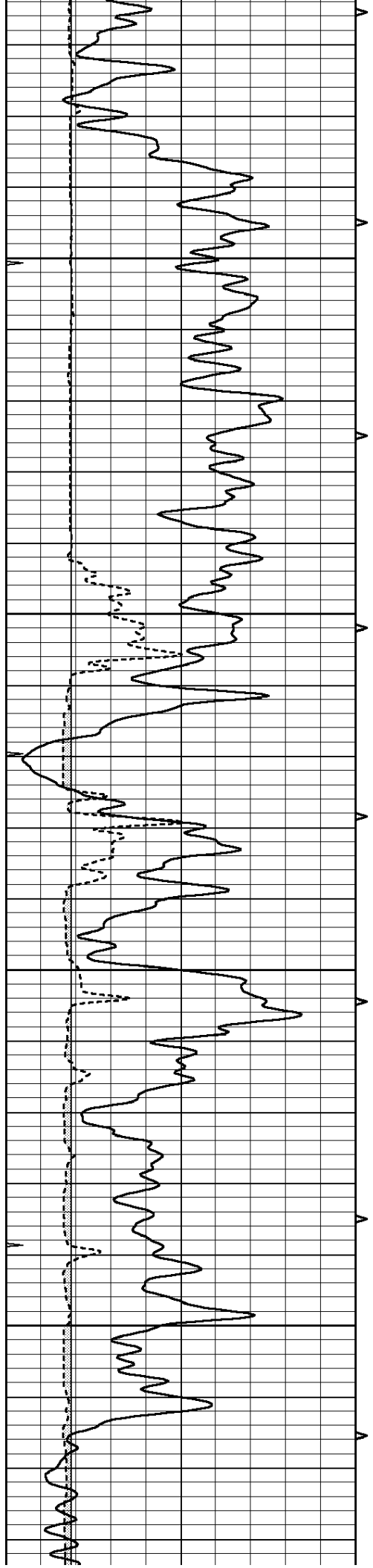
500

550

600





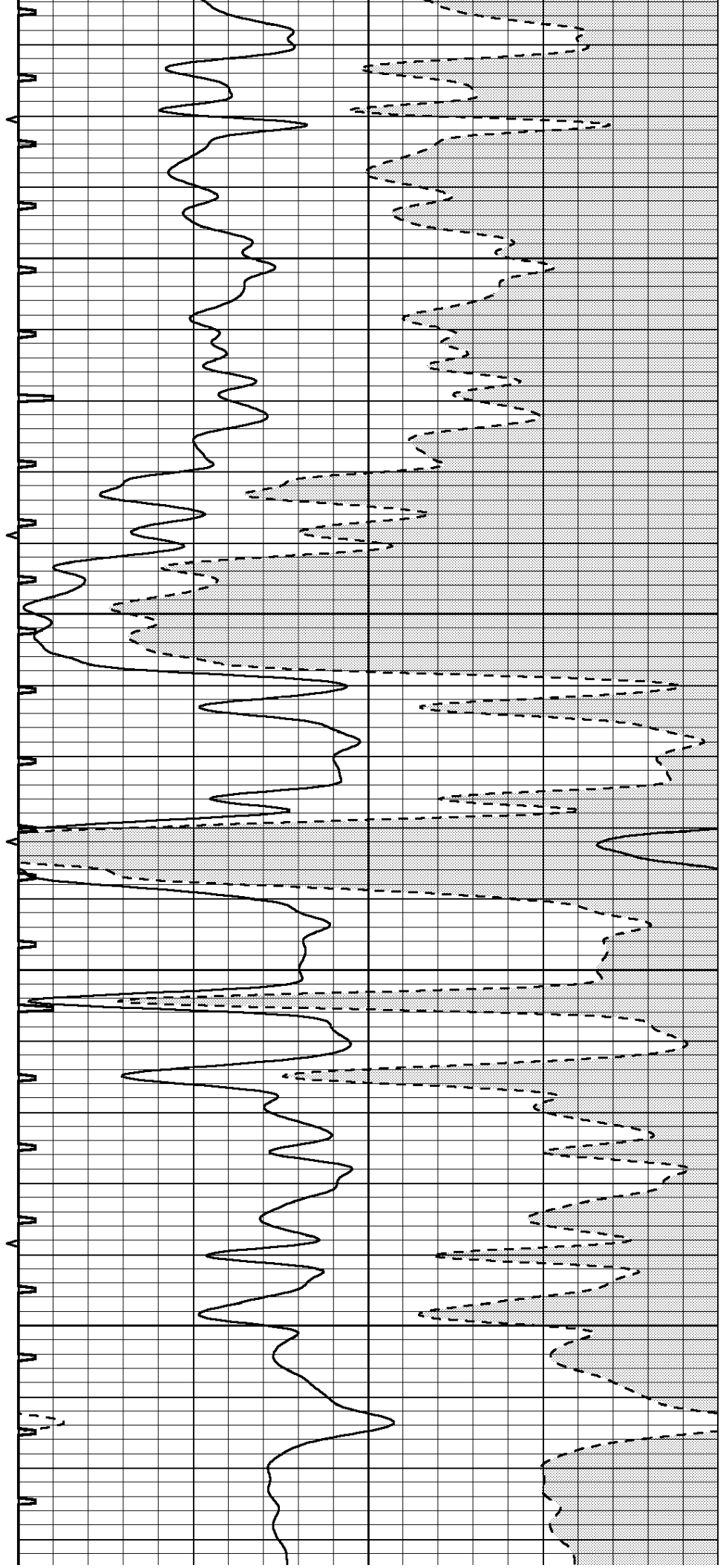


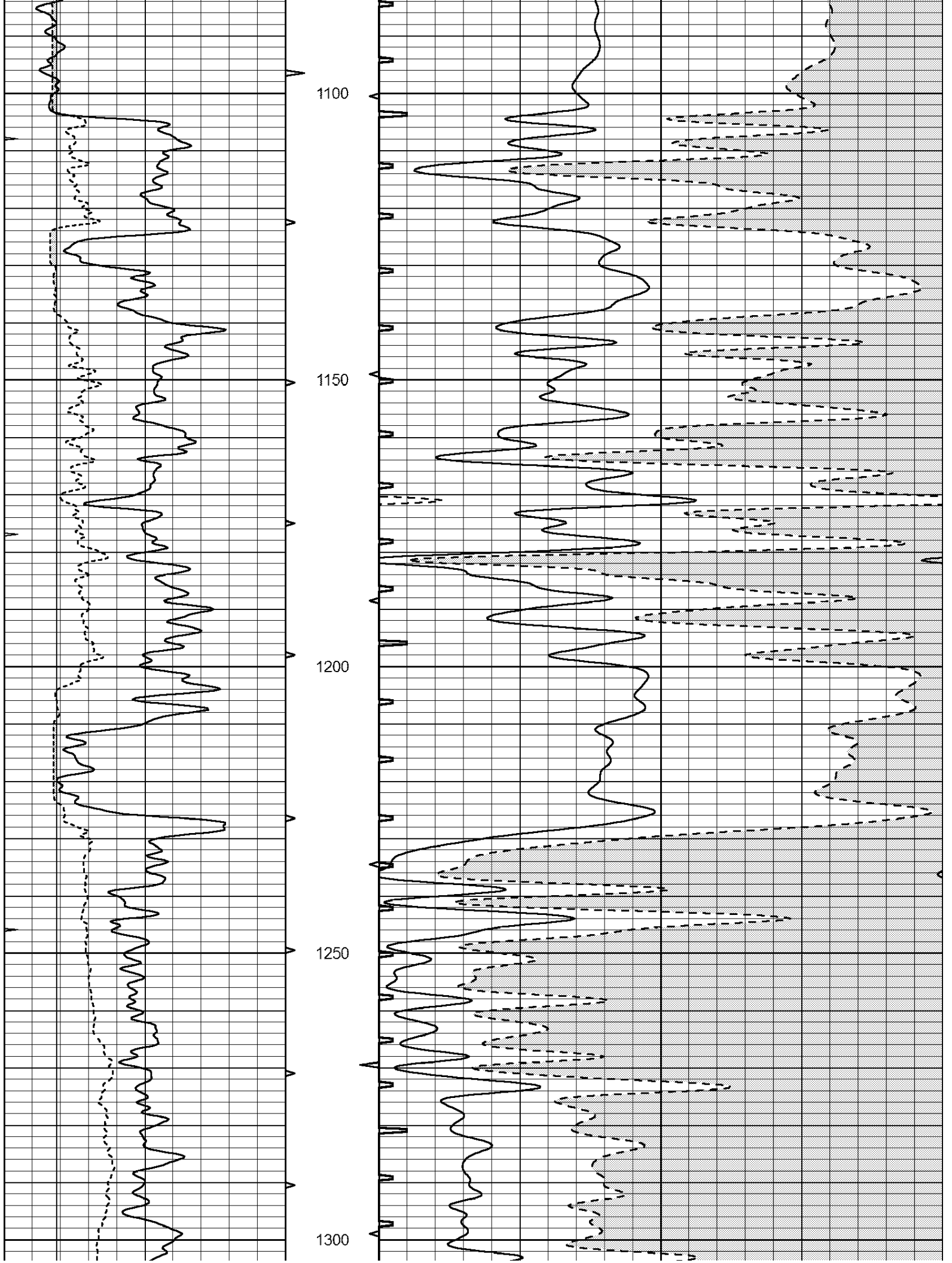
900

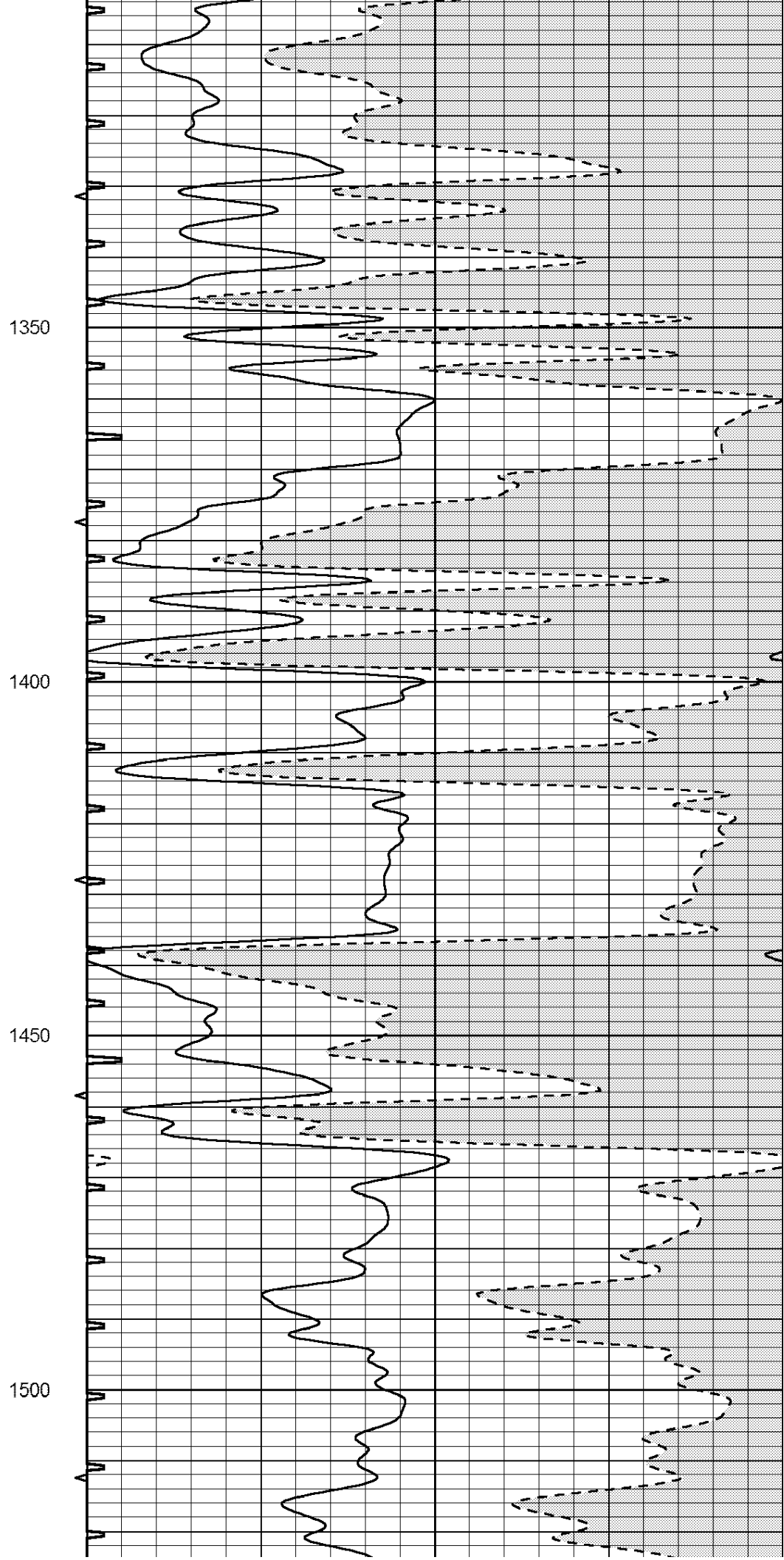
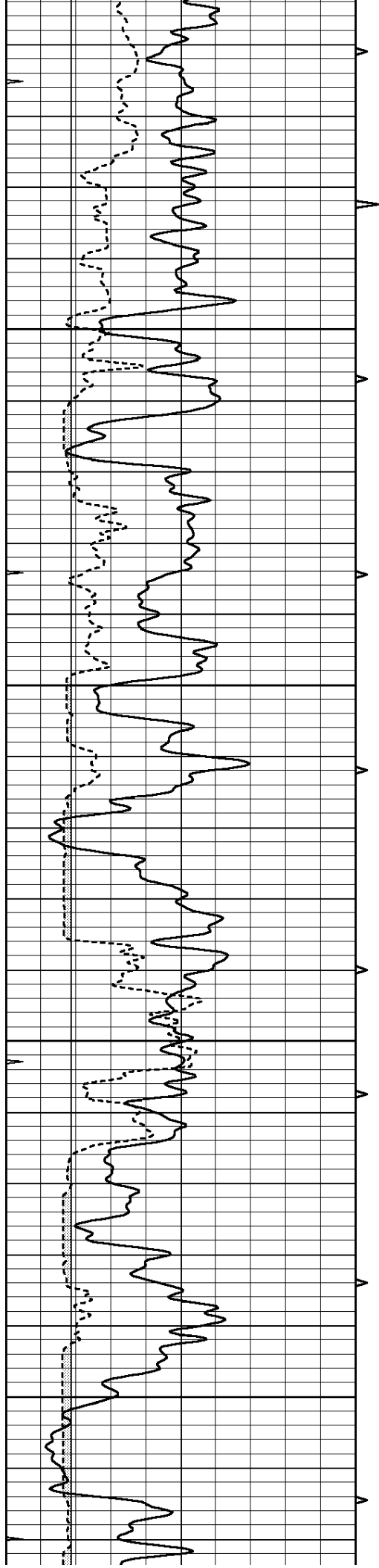
950

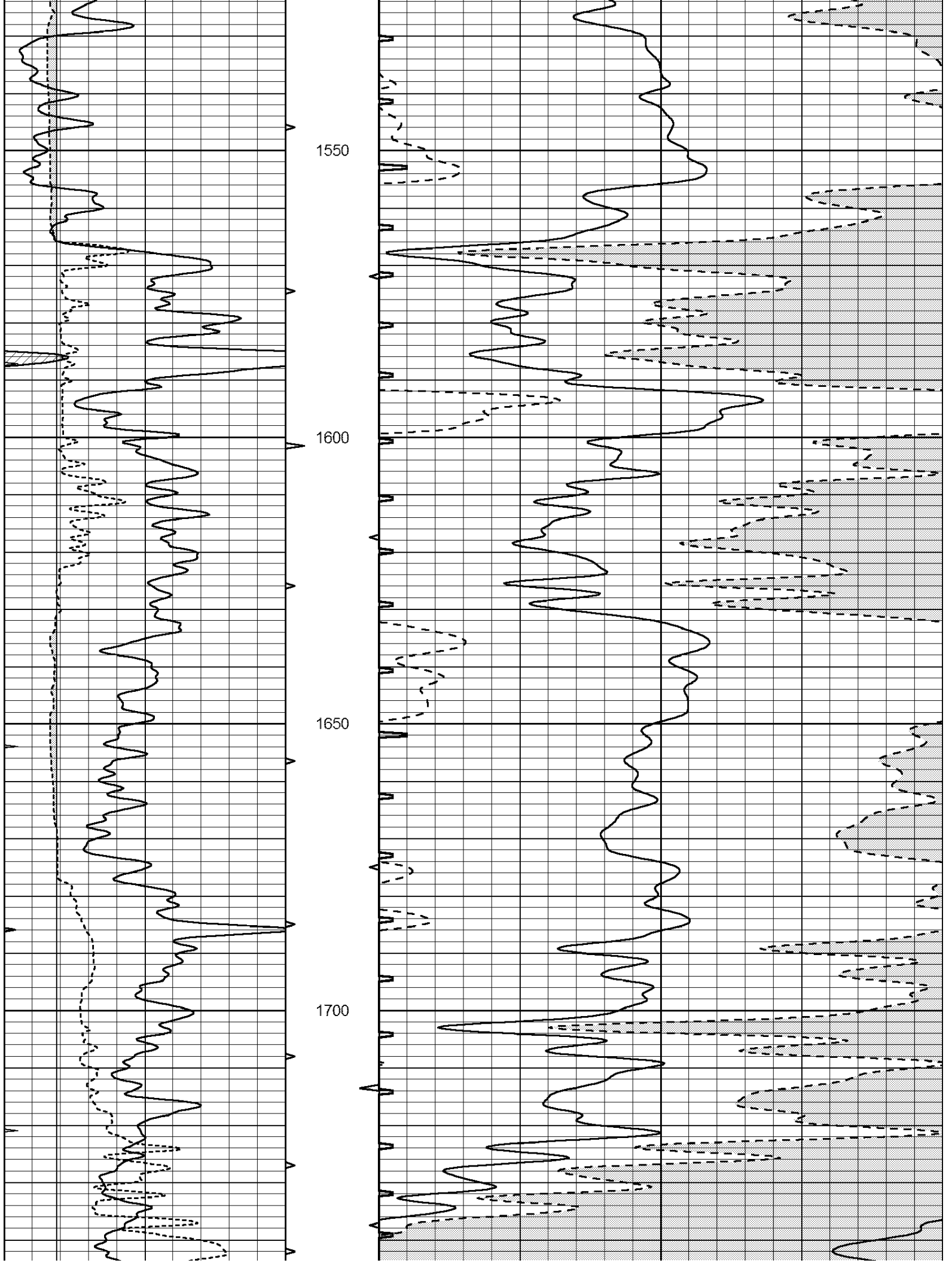
1000

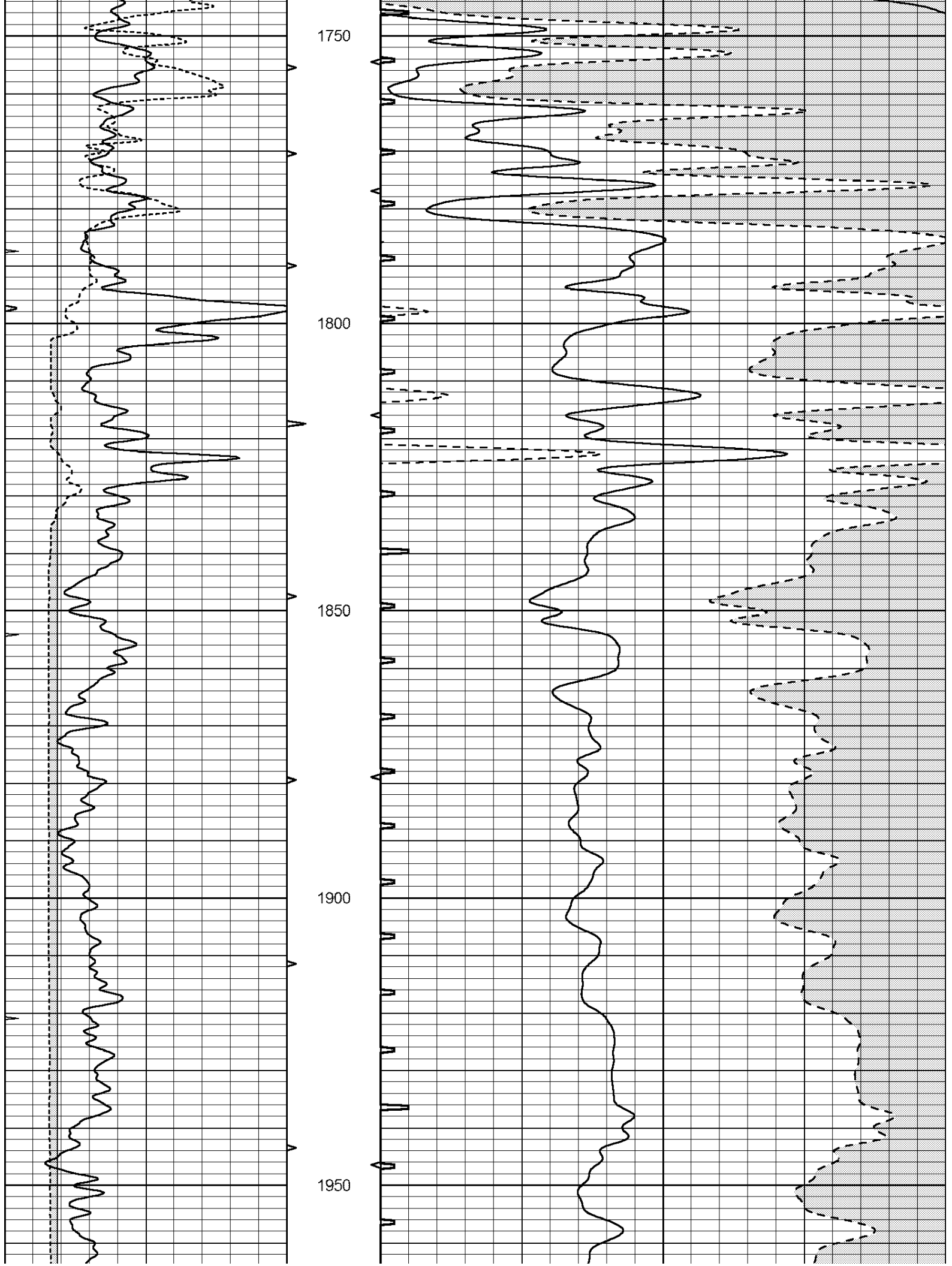
1050

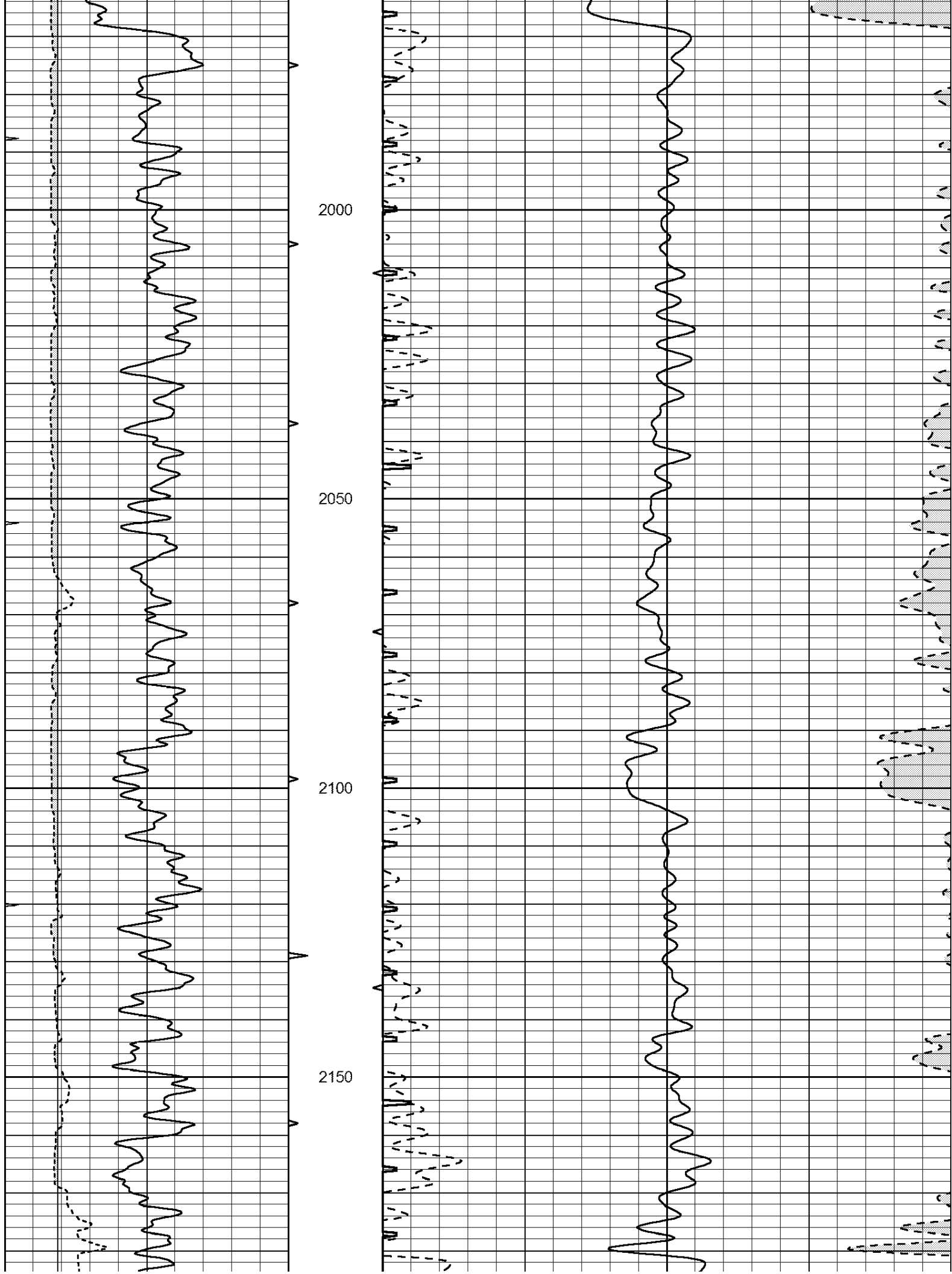


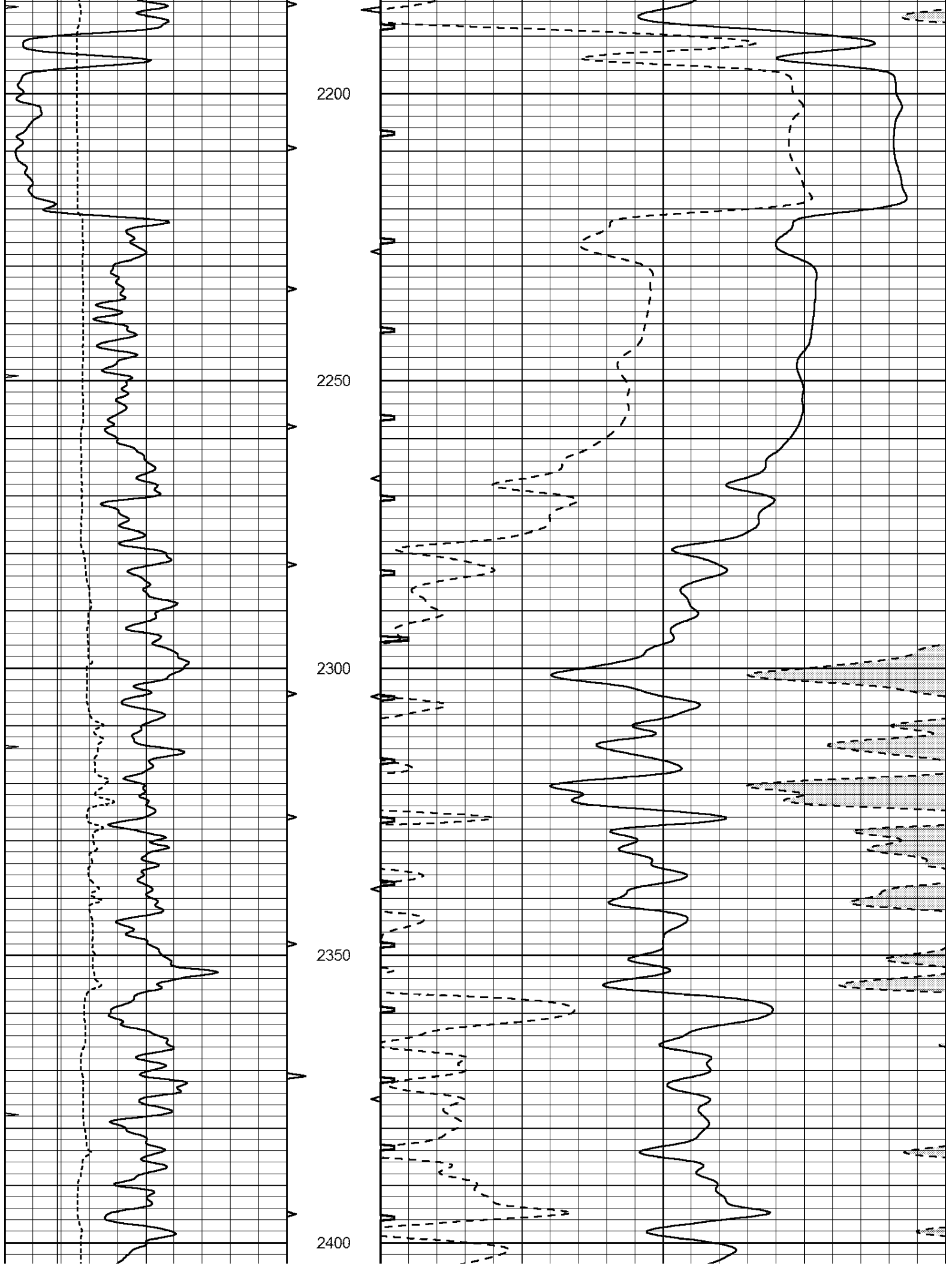


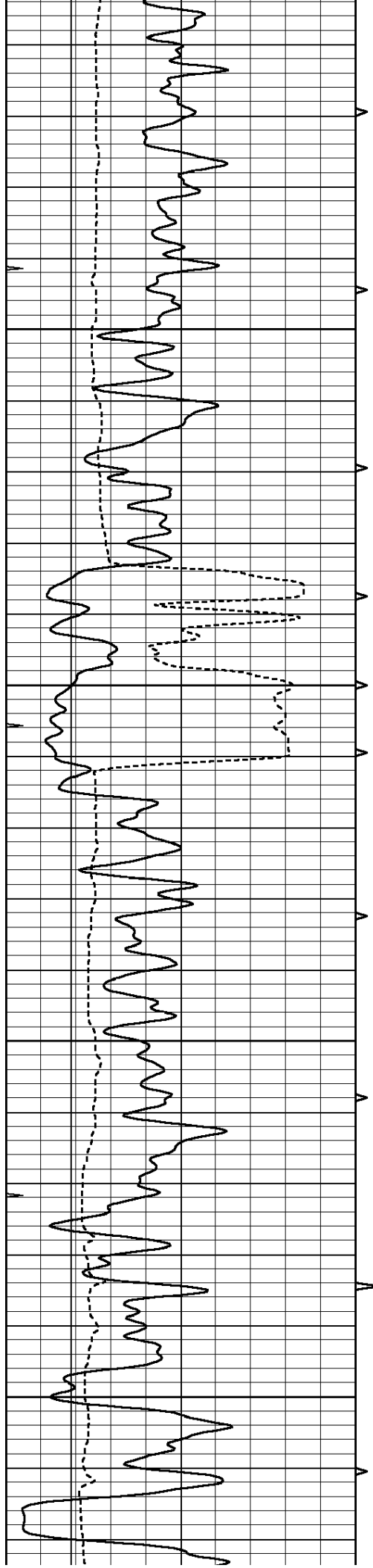










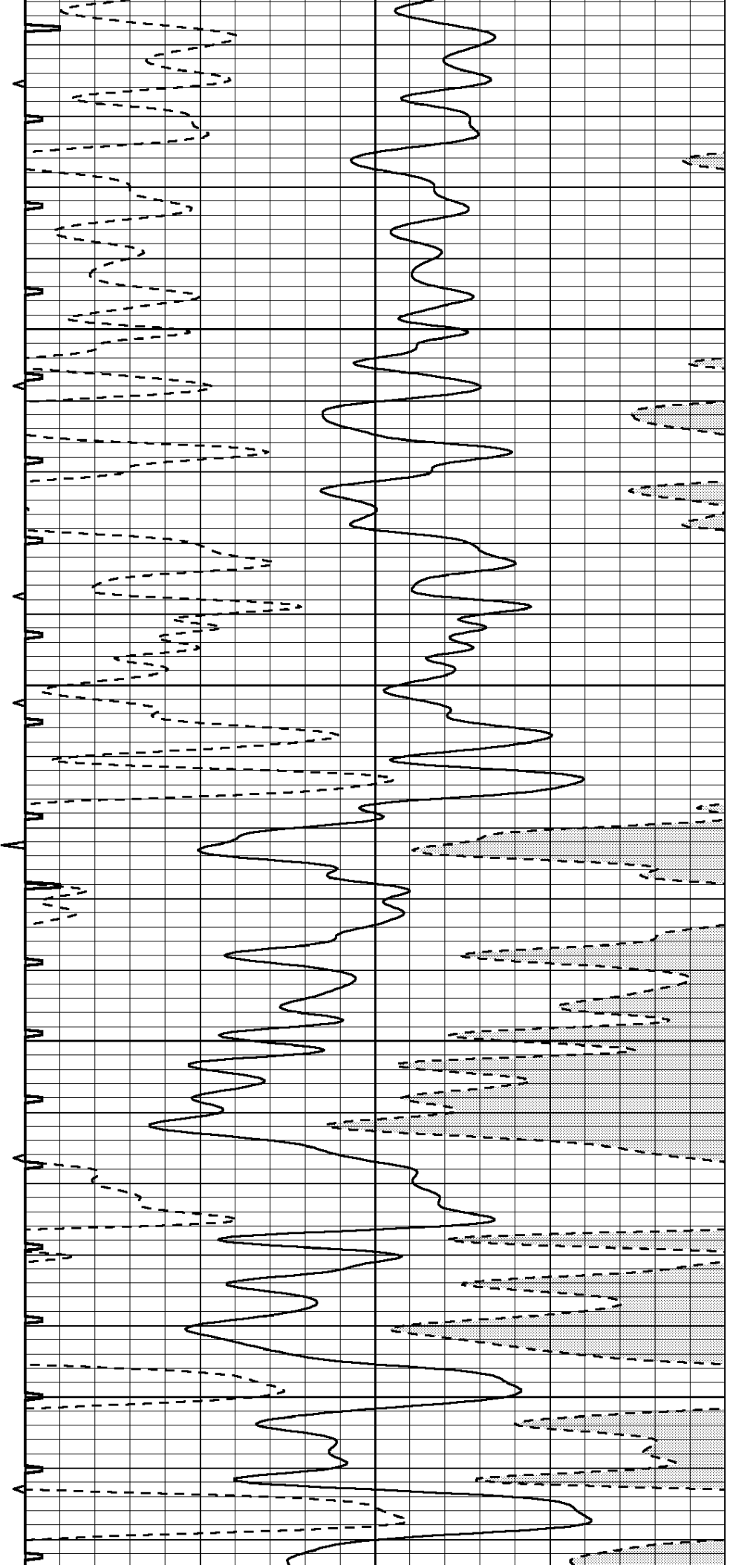


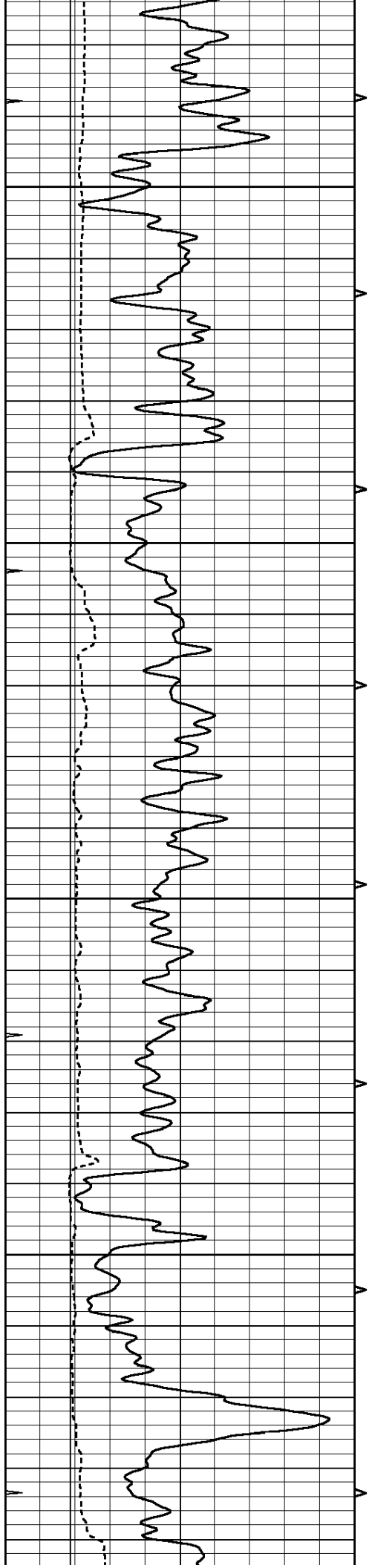
2450

2500

2550

2600



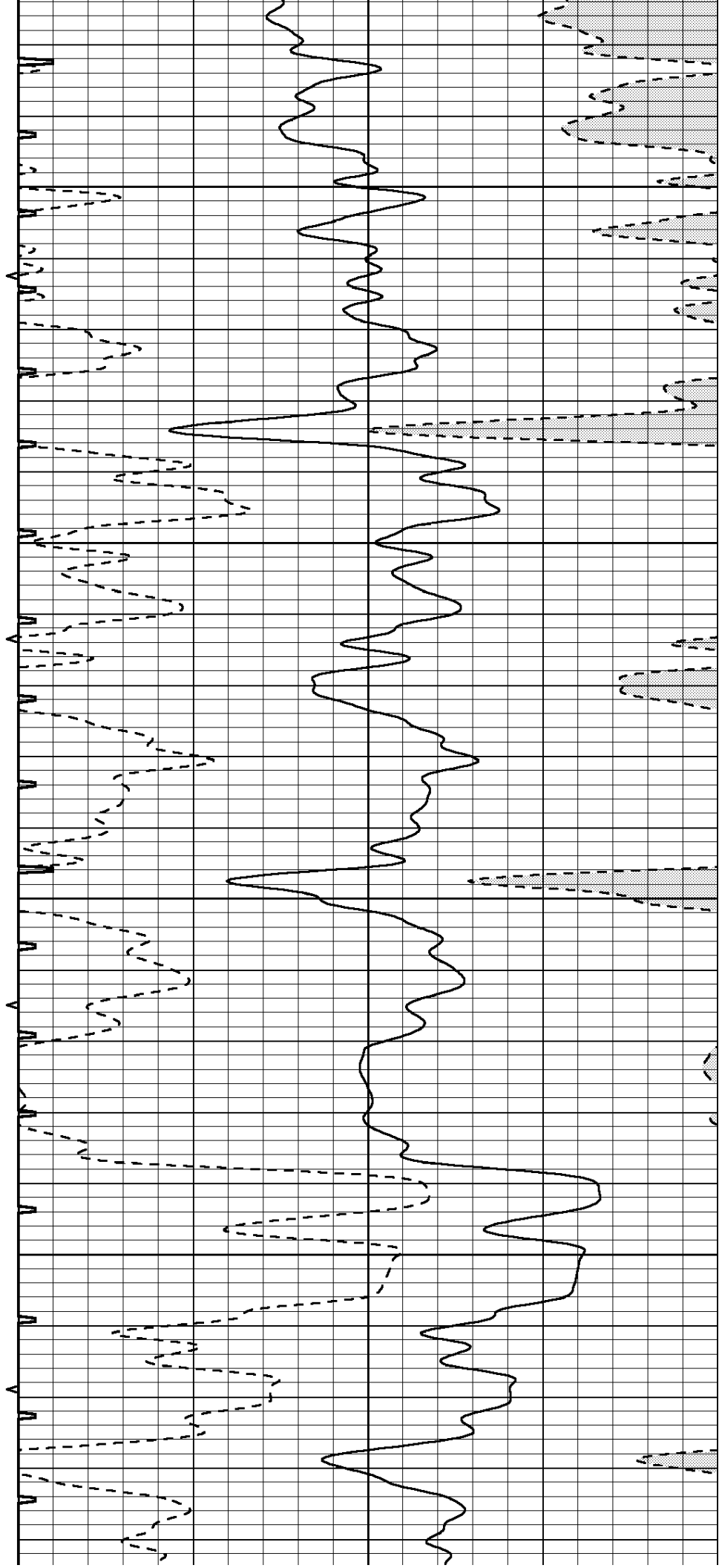


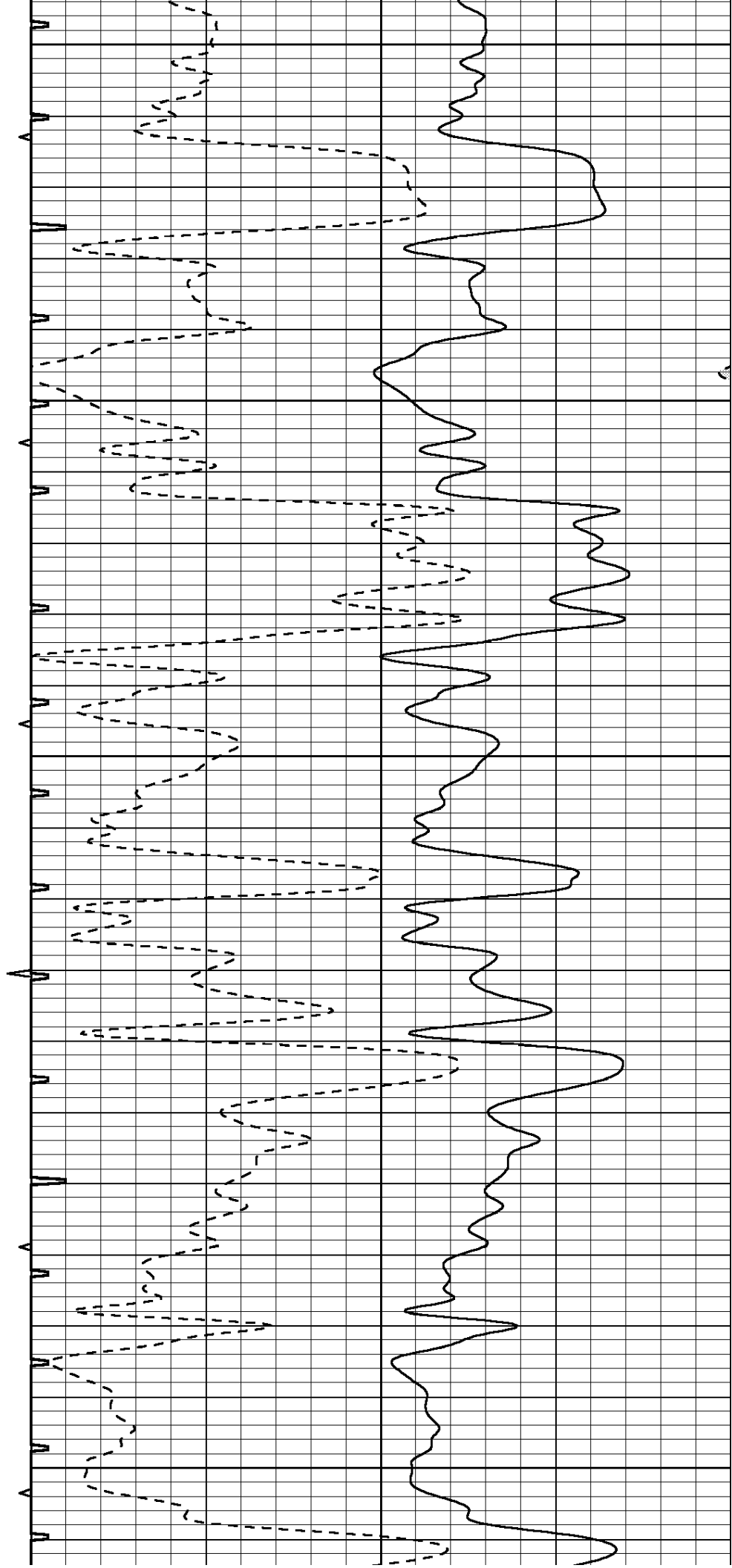
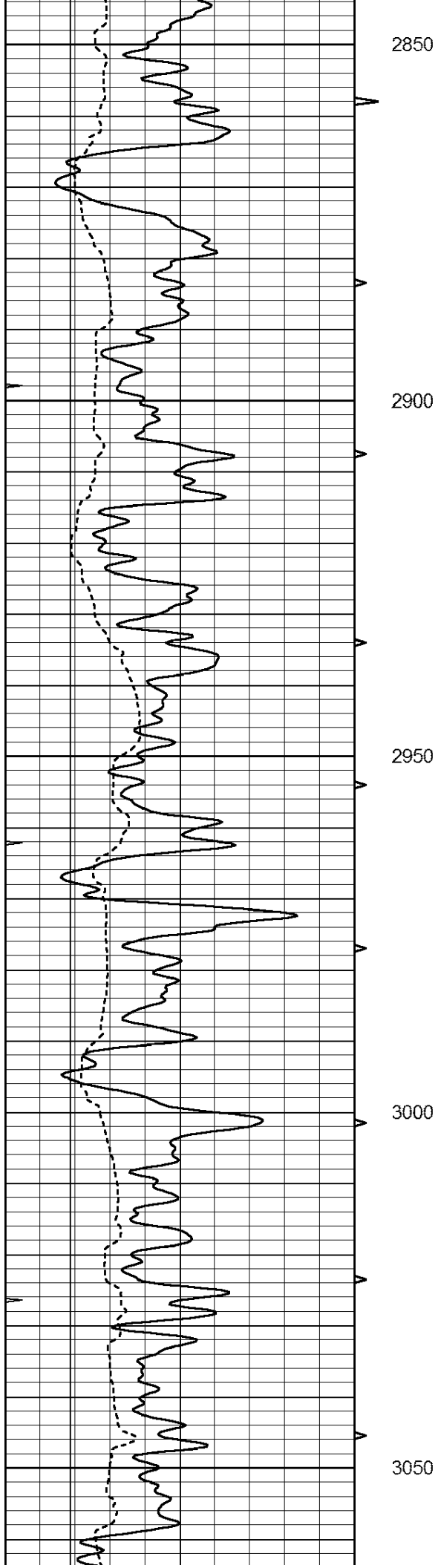
2650

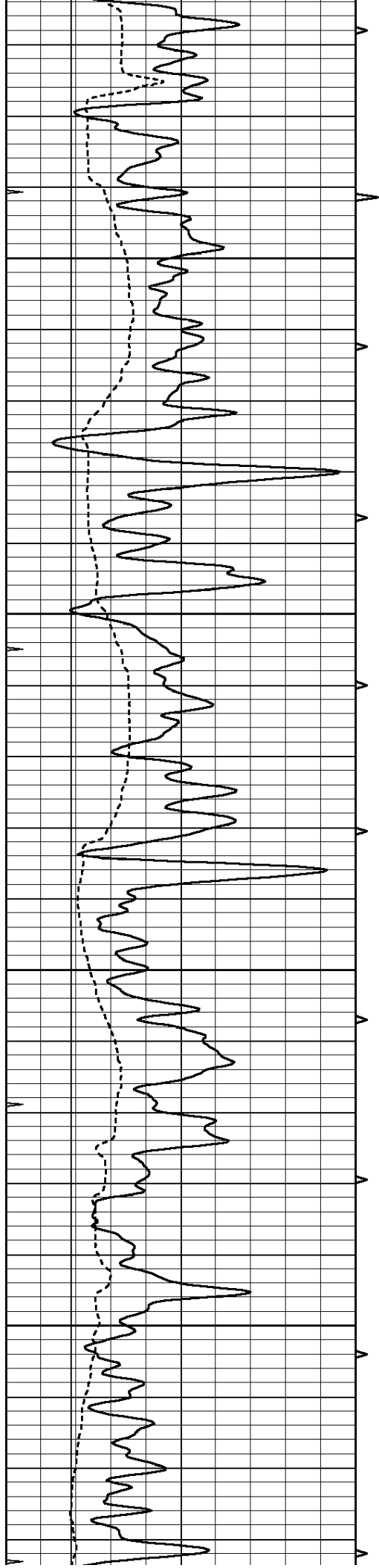
2700

2750

2800





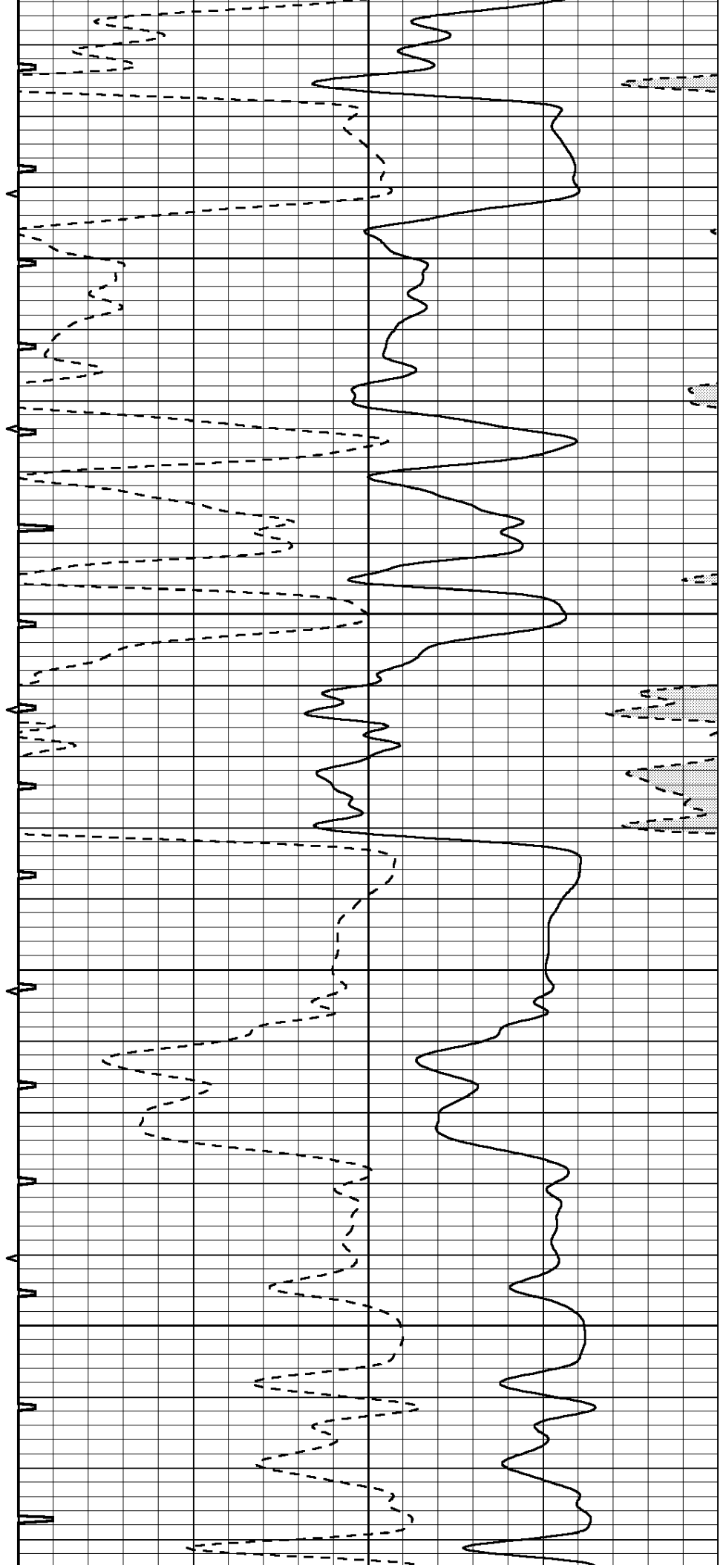


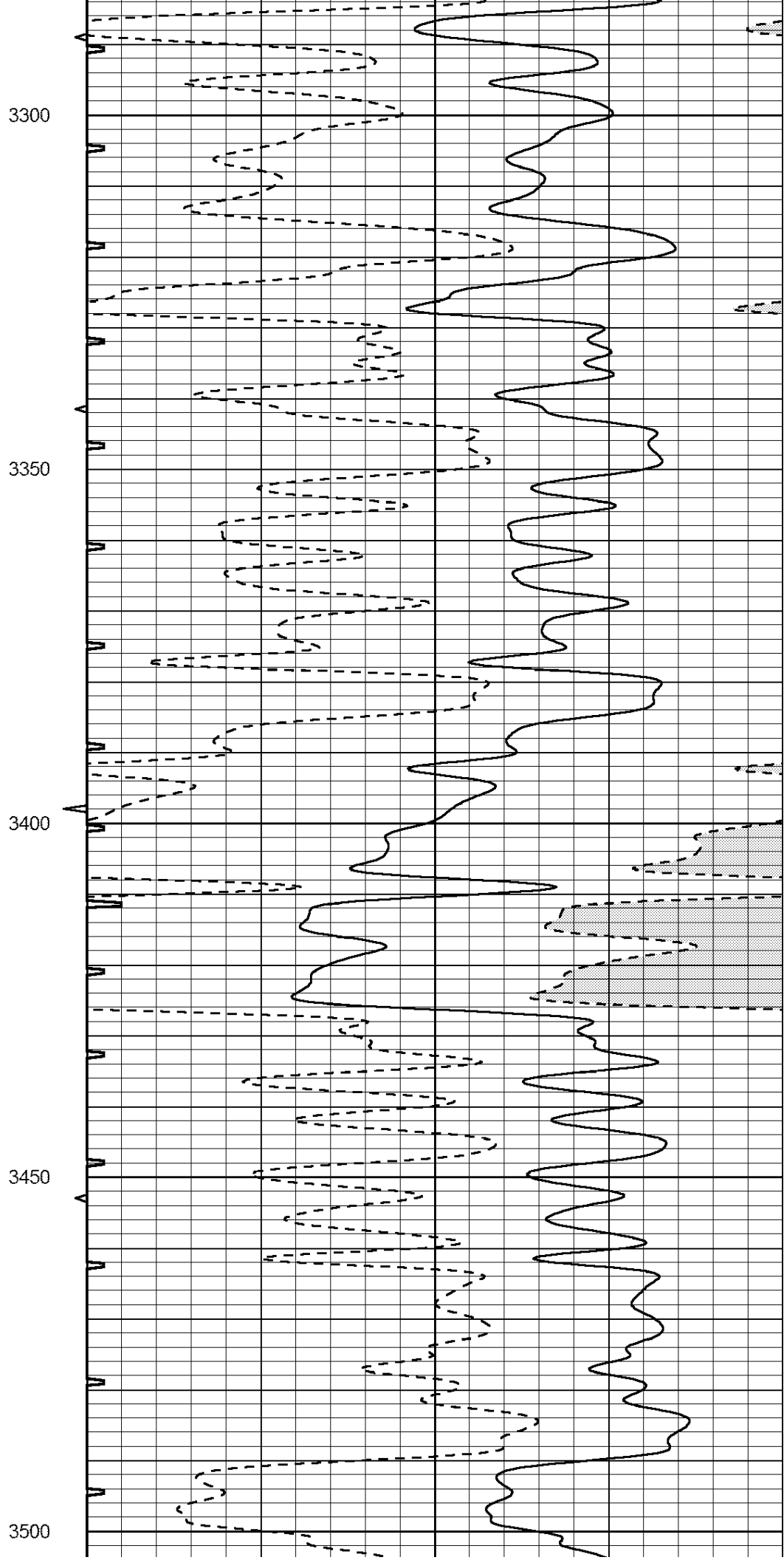
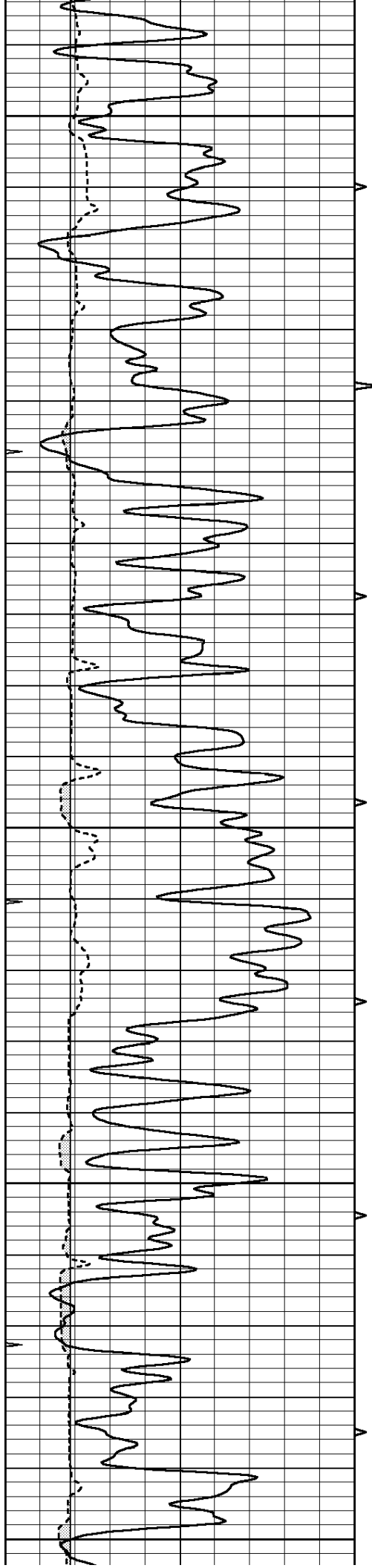
3100

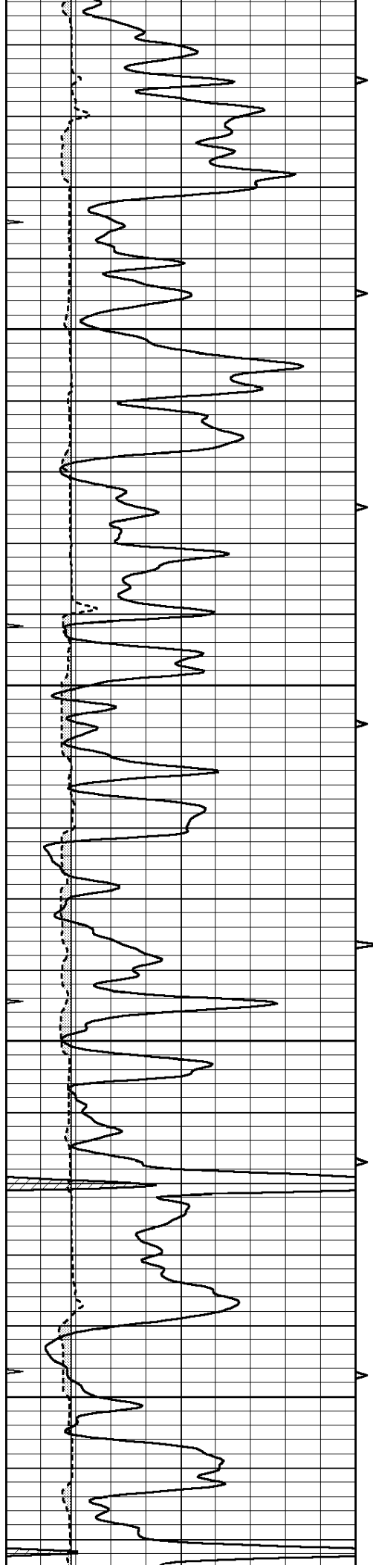
3150

3200

3250





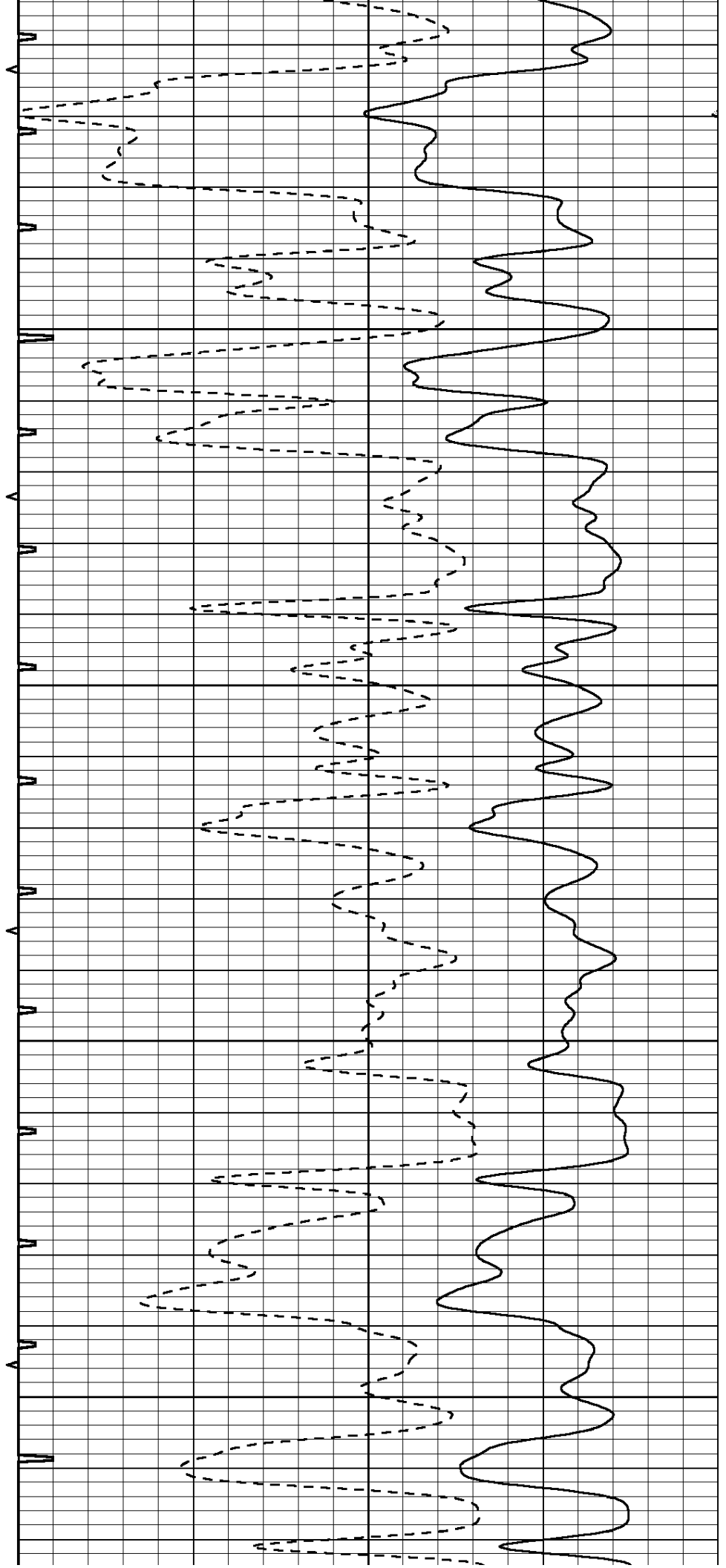


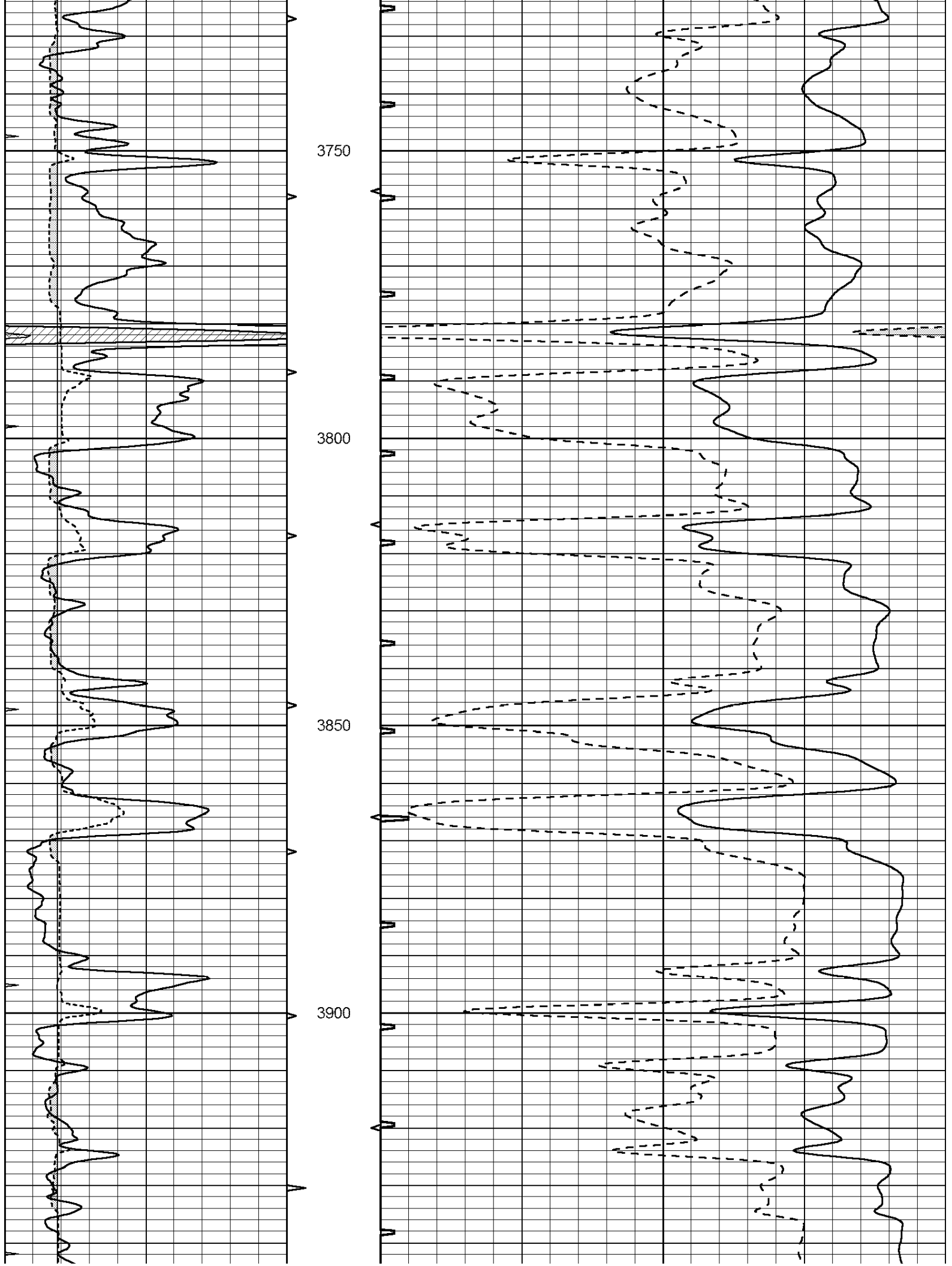
3550

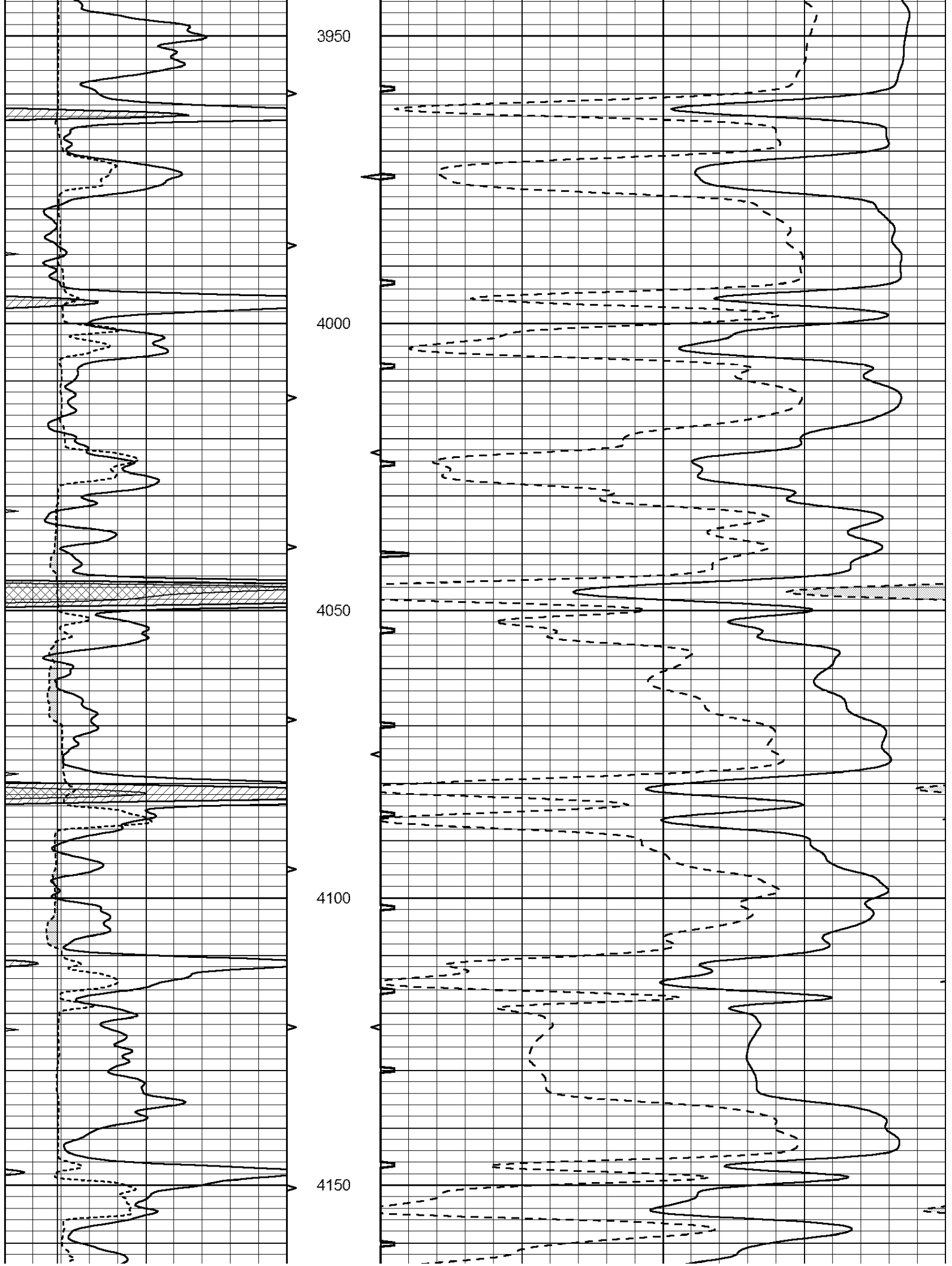
3600

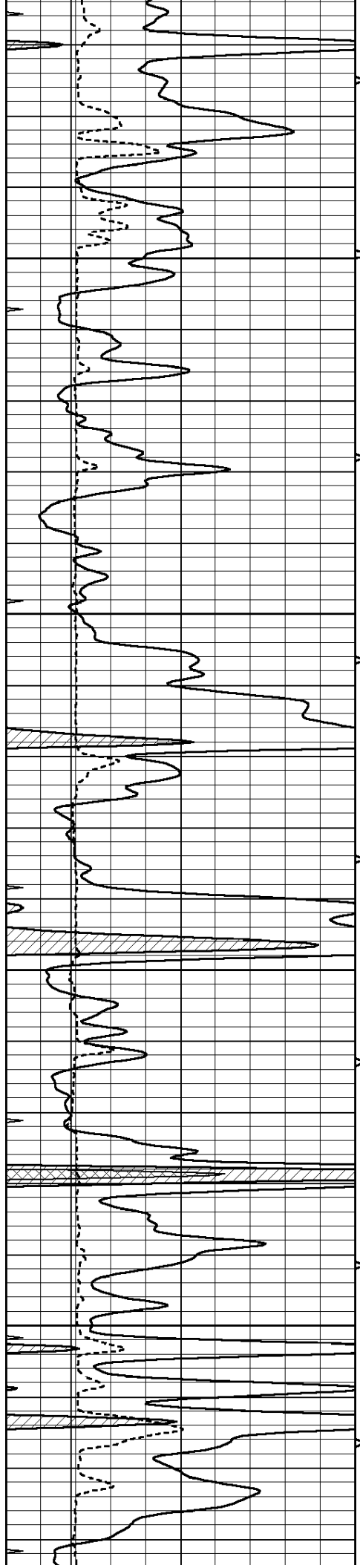
3650

3700







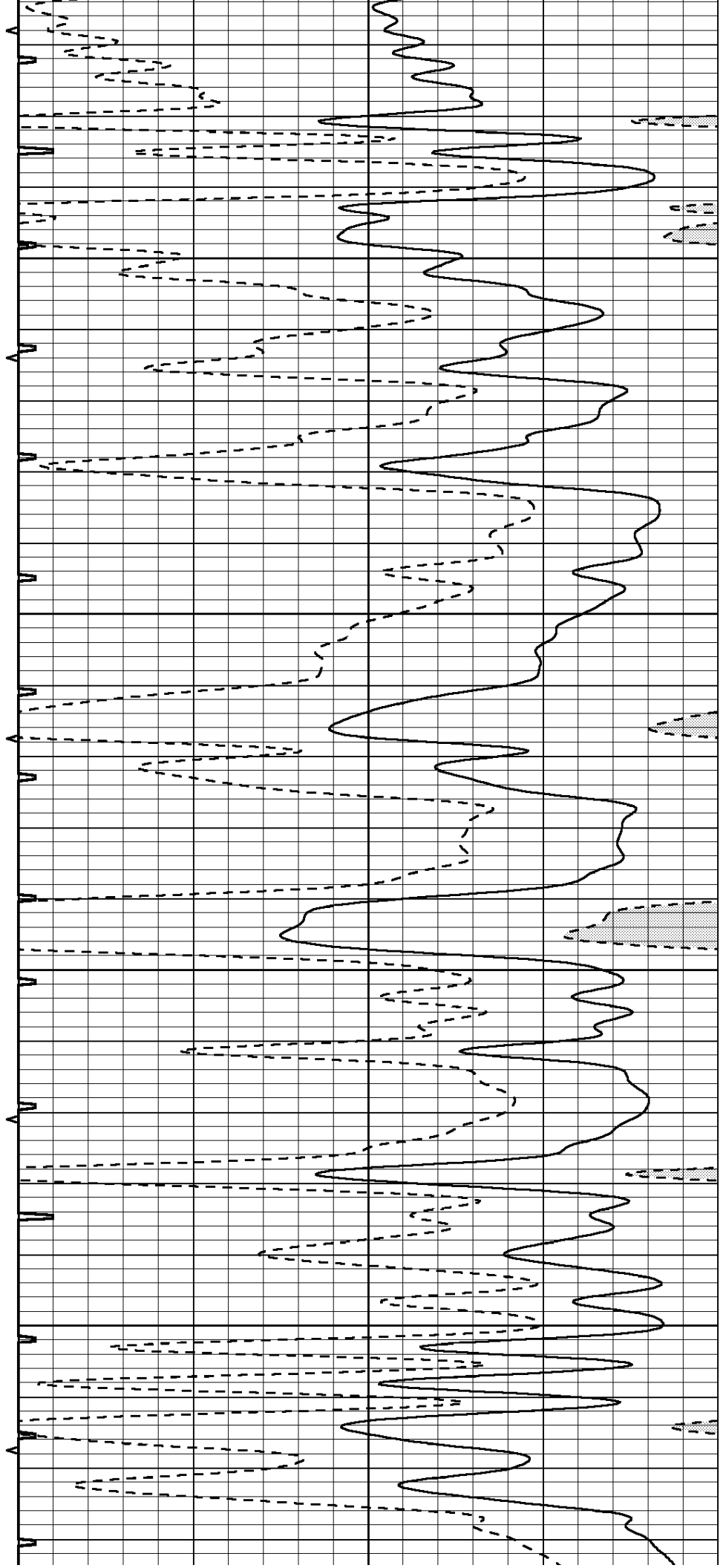


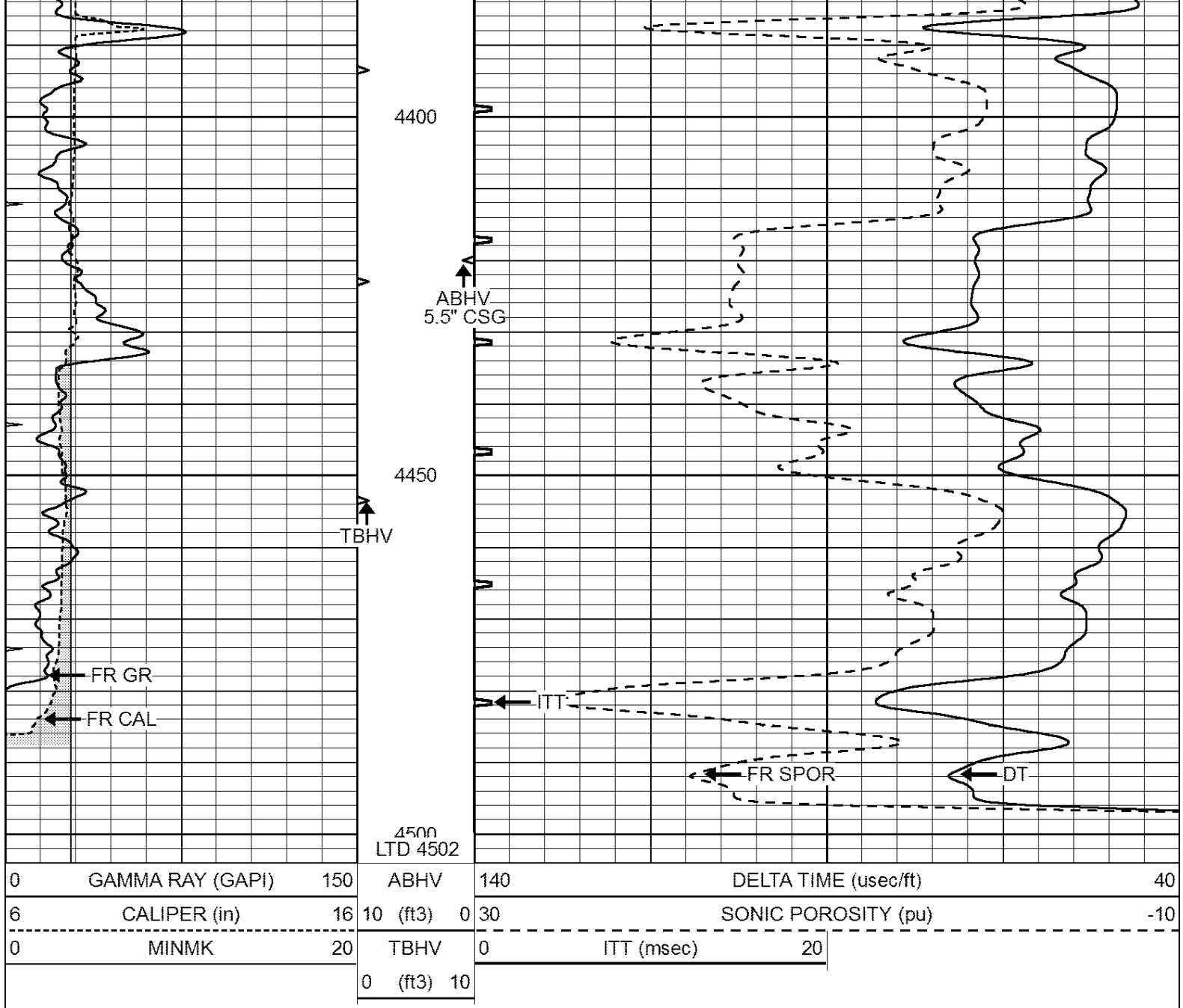
4200

4250

4300

4350

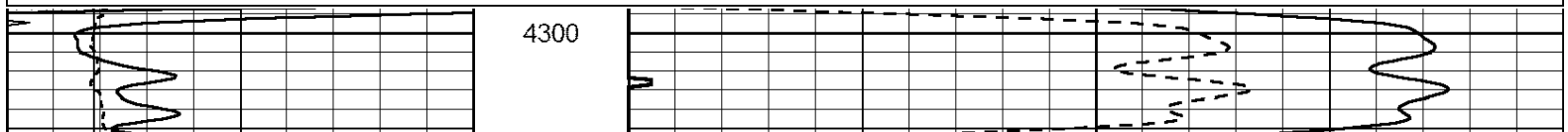


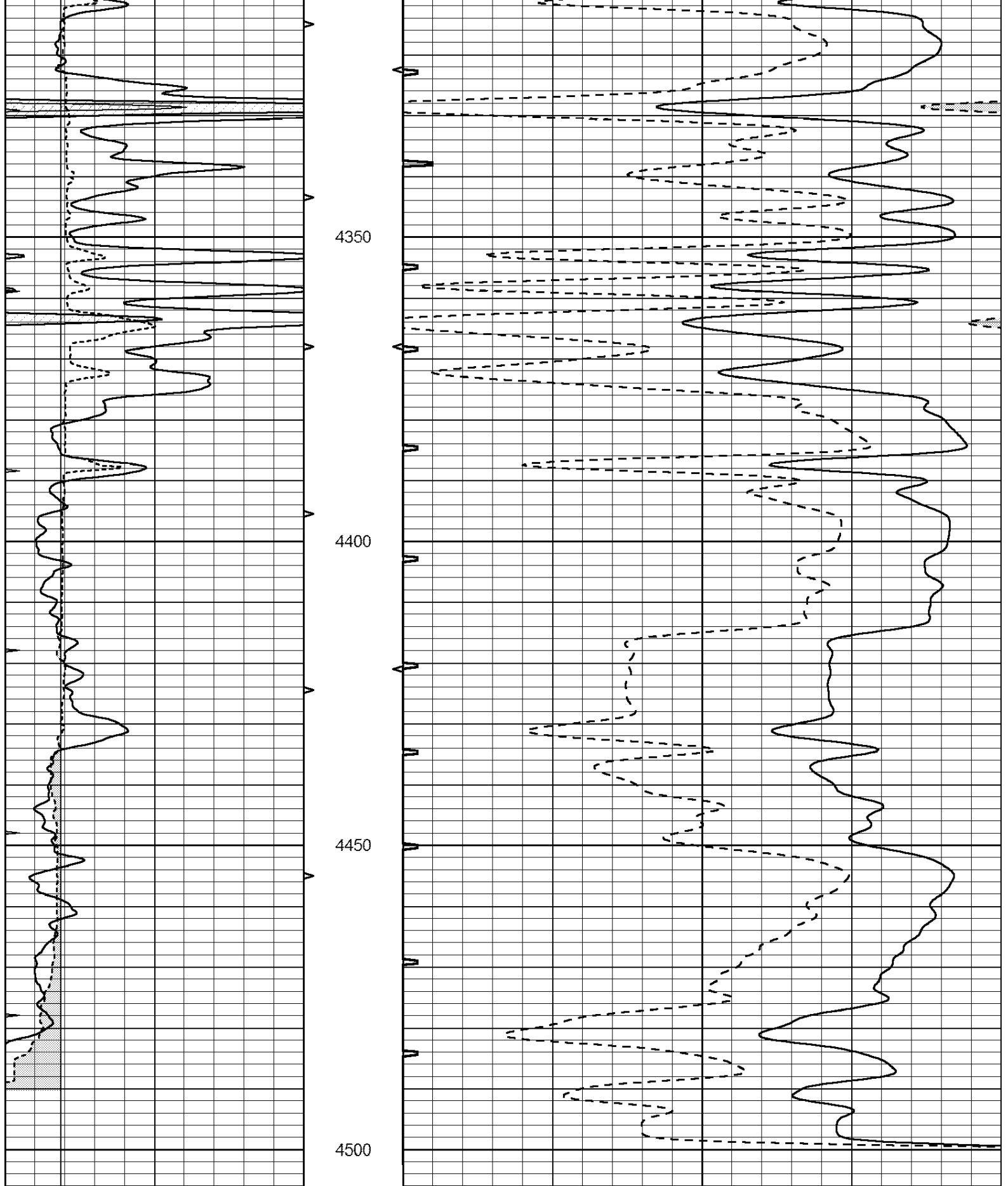


REPEAT SECTION

Database File: 26219ddn.db
 Dataset Pathname: pass5.1
 Presentation Format: _slt
 Dataset Creation: Tue Oct 28 06:58:55 2014 by Calc Open-Cased 090629
 Charted by: Depth in Feet scaled 1:240

0	GAMMA RAY (GAPI)	150	ABHV	140	DELTA TIME (usec/ft)	40	
6	CALIPER (in)	16	10 (ft3)	0	30	SONIC POROSITY (pu)	-10
0	MINMK	20	TBHV	0	ITT (msec)	20	
			0 (ft3)	10			





0	GAMMA RAY (GAPI)	150	ABHV	140	DELTA TIME (usec/ft)	40	
6	CALIPER (in)	16	10 (ft3)	0	30	SONIC POROSITY (pu)	-10
0	MINMK	20	TBHV	0	ITT (msec)	20	
			0 (ft3)	10			