



**Sonic Cement
Bond Log**

15-007-24178-0000

Company **Chieftain Oil Company, Inc.**
 Well **Achenbach B #5**
 Field **Stranathan**
 County **Barber** State **Kansas**

Location **2970' FSL & 2310' FWL**
SE - SE - NW
 Sec: **1** Twp: **35S** Rge: **12W**

Permanent Datum **Ground Level** Elevation **1401**
 Log Measured From **Kelly Bushing** 12 Ft. Above Perm. Datum
 Drilling Measured From **Kelly Bushing**

Other Services
 Mast Trailer
 Elevation
 K.B. 1413
 D.F. 1412
 G.L. 1401

Run Number	One	
Date Survey	6/28/2014	
Date Cementing	6/14/2014	
Type Cementing Operation	Primary	
Depth Driller	5597	
Depth Logger	5542	
Logged Interval	5541 to 3900	
Casing Driller	5.5 @ TD	
Float Collar -- D.V. Tool	////	
Squeeze Depth	////	
Amount & Type Cement	////	
Amount & Type Admix	////	
Type Fluid In Hole	Water	
Fluid Level	Full	
Salinity PPM CL	////	
Weight lb/gal -- Vis.	////	
Approx. Logged Cement Top	4064	
Calculated Cement Top	////	
Max. Hole Temperature	////	
Tool No.	DIG02	
Spacing Recorded	3-5	
Equipment -- Location	02 Pratt	
Recorded By	N. Schneider	
Witnessed By	Ryan Moiz	

<<< Fold Here >>>

All interpretations are opinions based on inferences from electrical or other measurements and we cannot and do not guarantee the accuracy or correctness of any interpretation, and we shall not, except in the case of gross or willful negligence on our part, be liable or responsible for any loss, costs, damages, or expenses incurred or sustained by anyone resulting from any interpretation made by any of our officers, agents or employees. These interpretations are also subject to our general terms and conditions set out in our current Price Schedule.

Comments

Thank you for using Excel Wireline (620) 388-5676

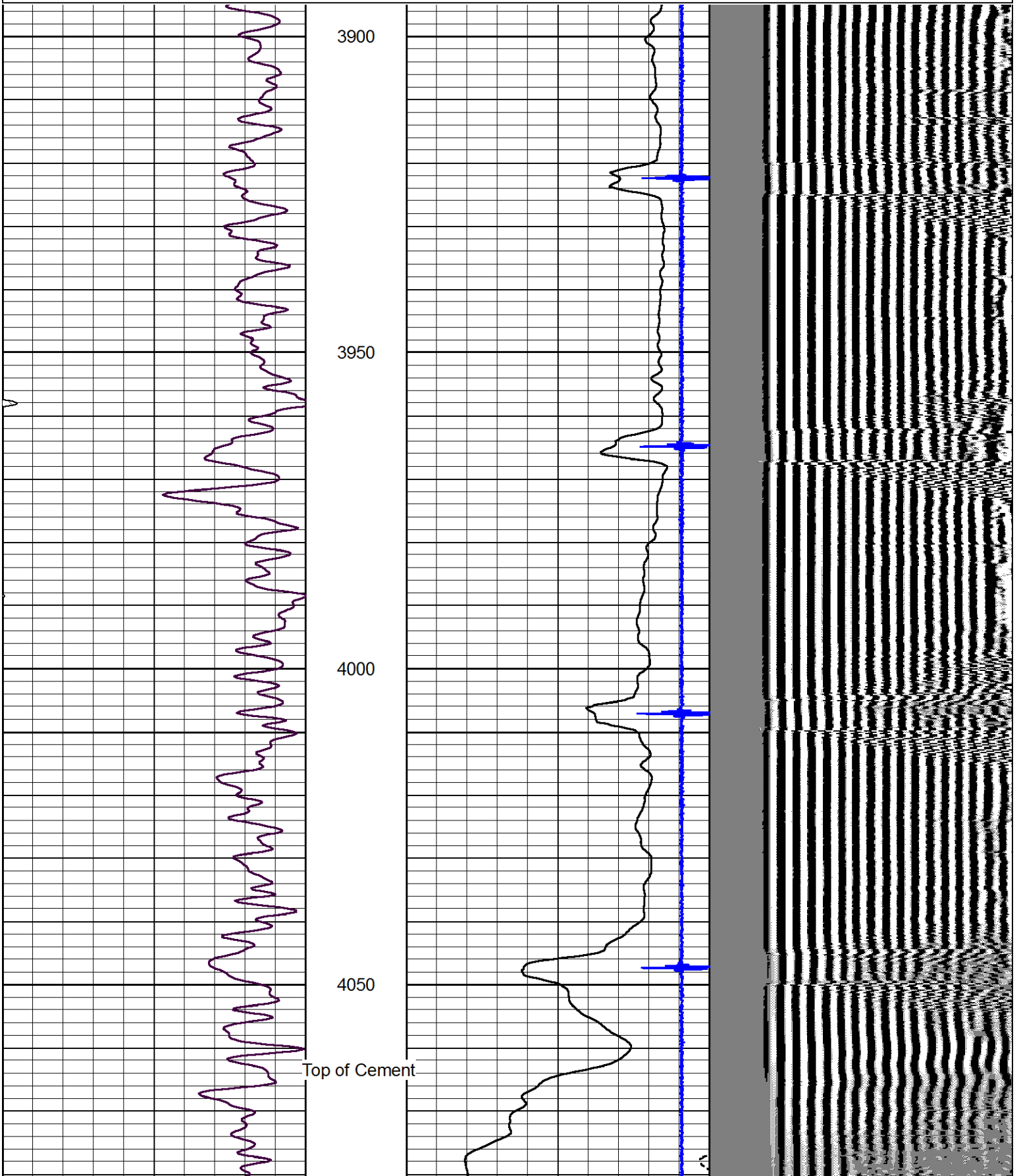
 Medicine Lodge
 S to Driftwood Rd
 6/10 W
 S into

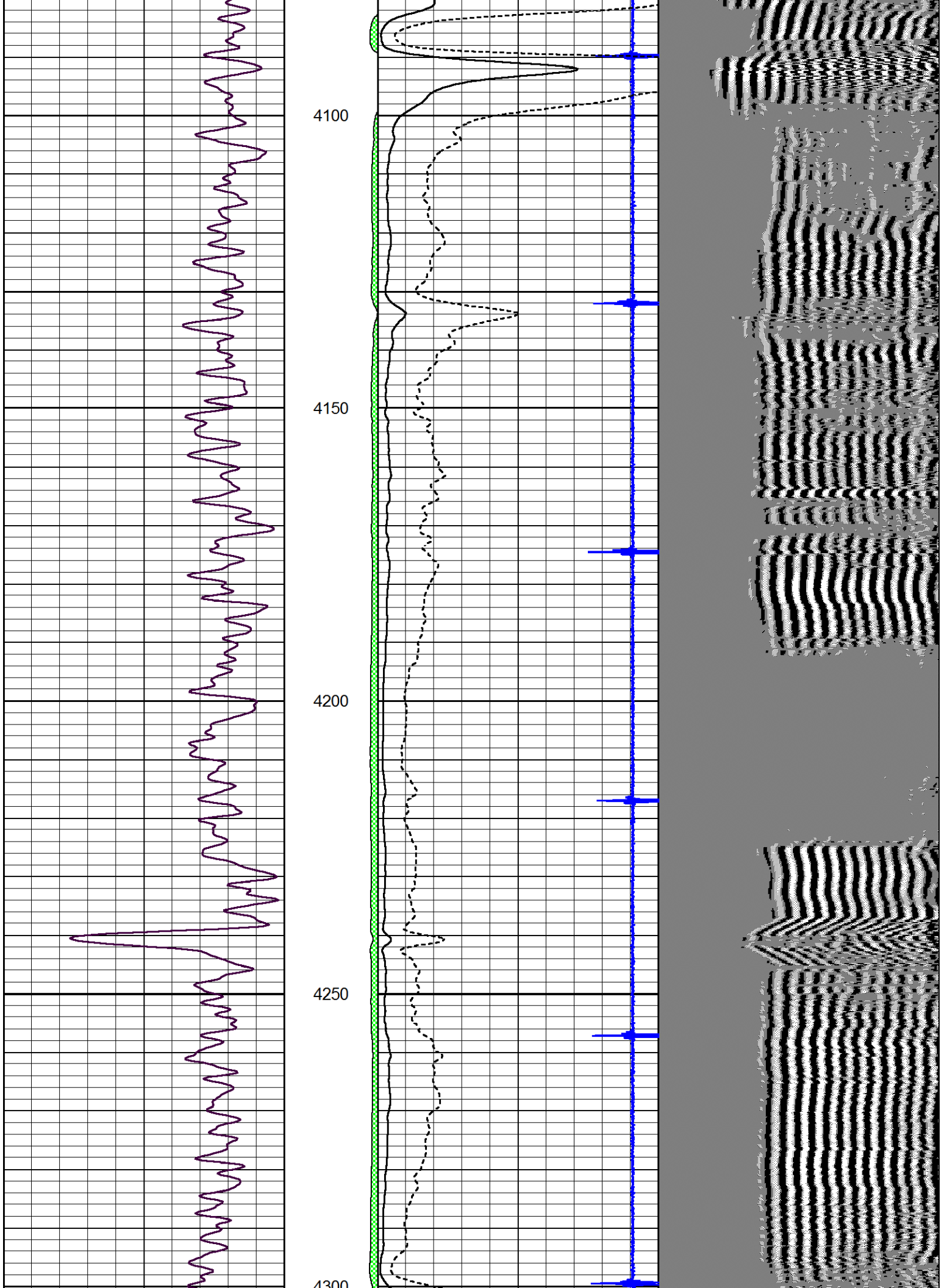


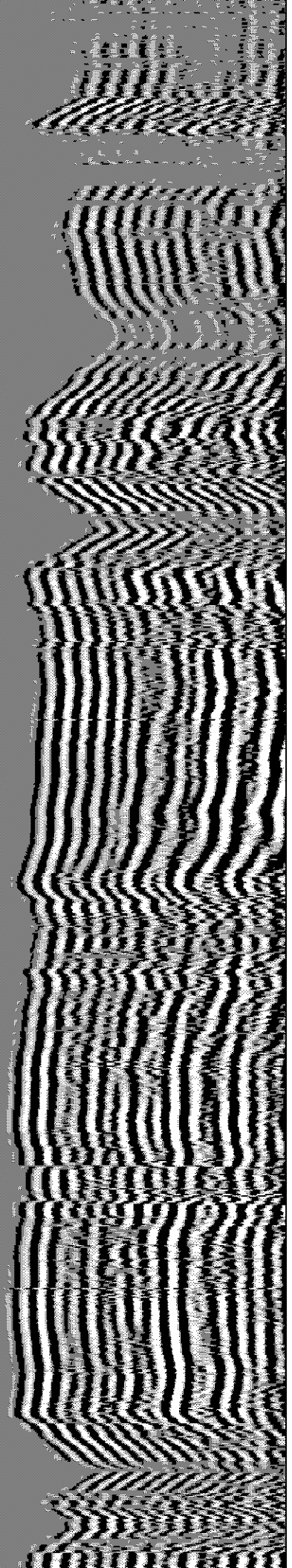
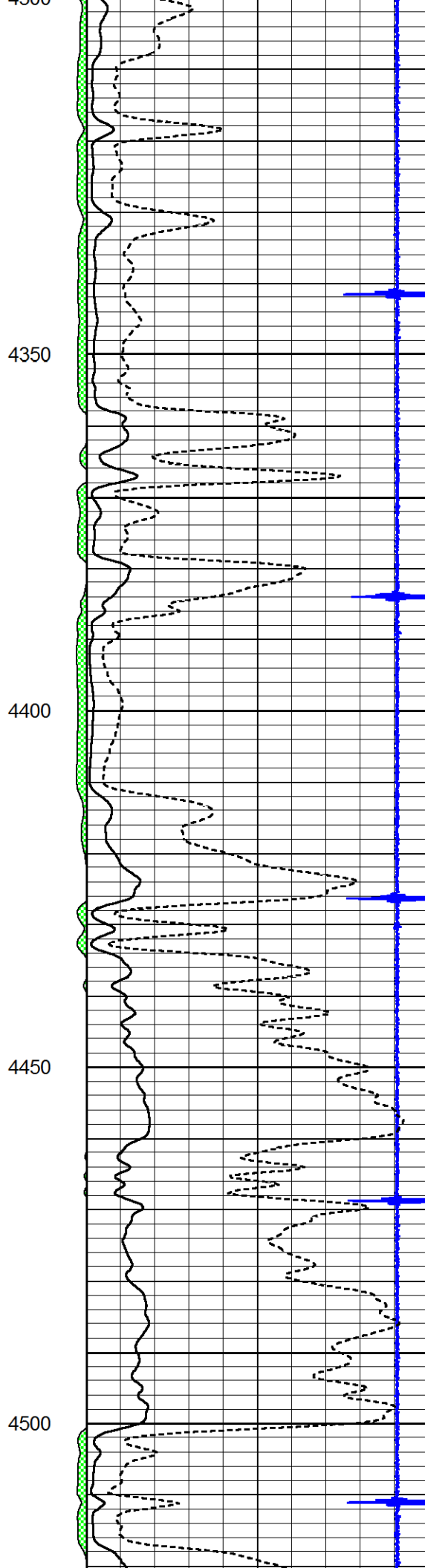
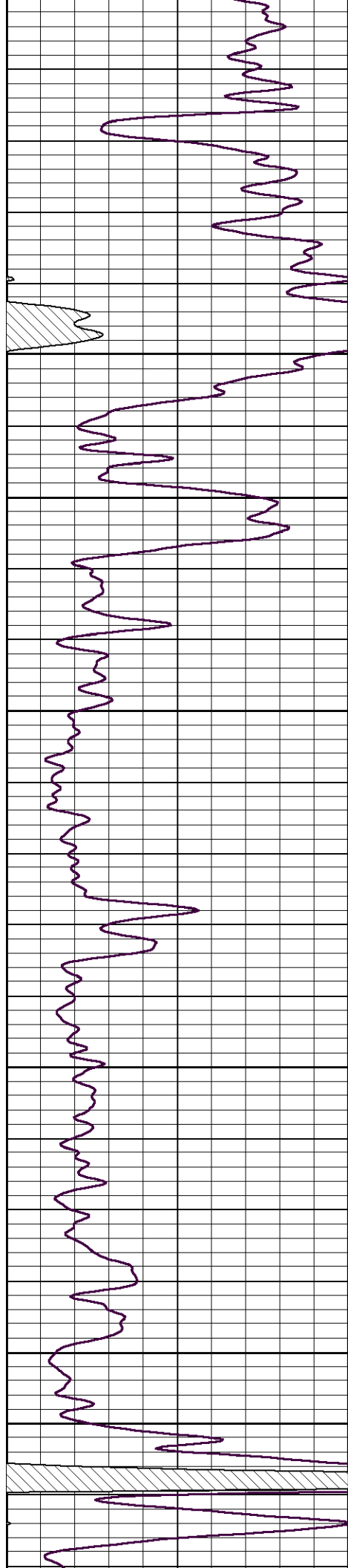
Main Pass

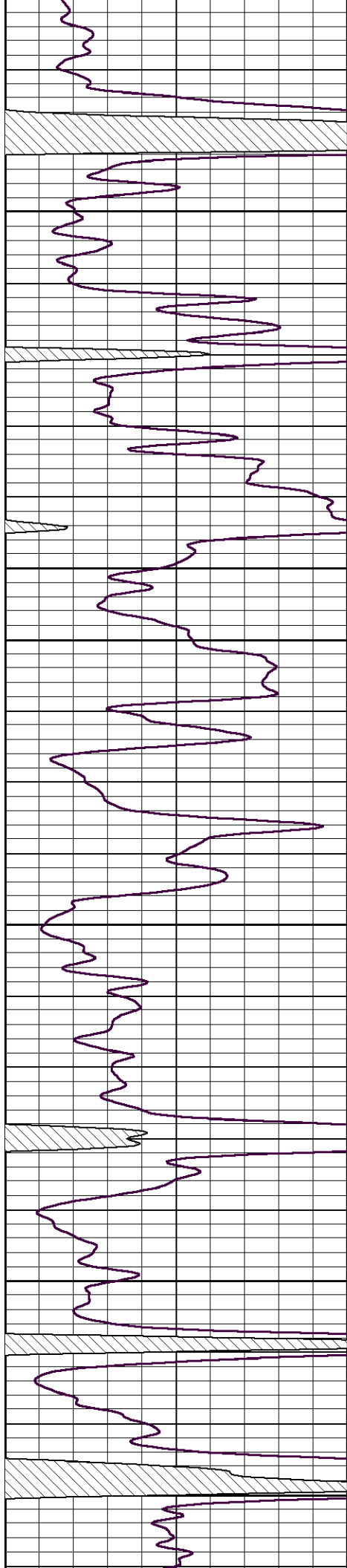
Database File chieftain_achenbach_b_5.db
 Dataset Pathname grcbl/pass4
 Presentation Format cblcr
 Dataset Creation Sat Jun 28 08:02:37 2014
 Charted by Depth in Feet scaled 1:240

0	Gamma Ray (GAPI)	150	amp3ft	3	Casing Collars	-0.3	200	wvf5ft	1200
			(mV)	0	Amplified Amplitude (mV)	100			
			-100 10	0	Pipe Amplitude (mV)	20			







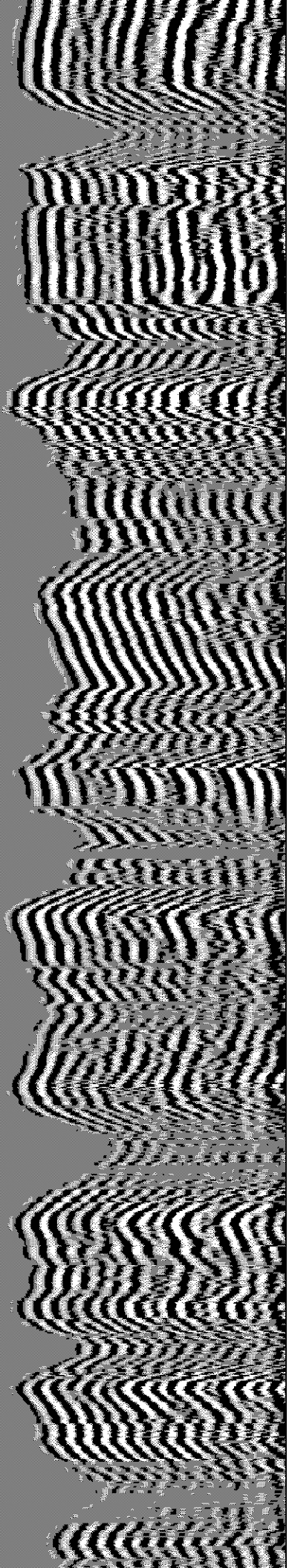
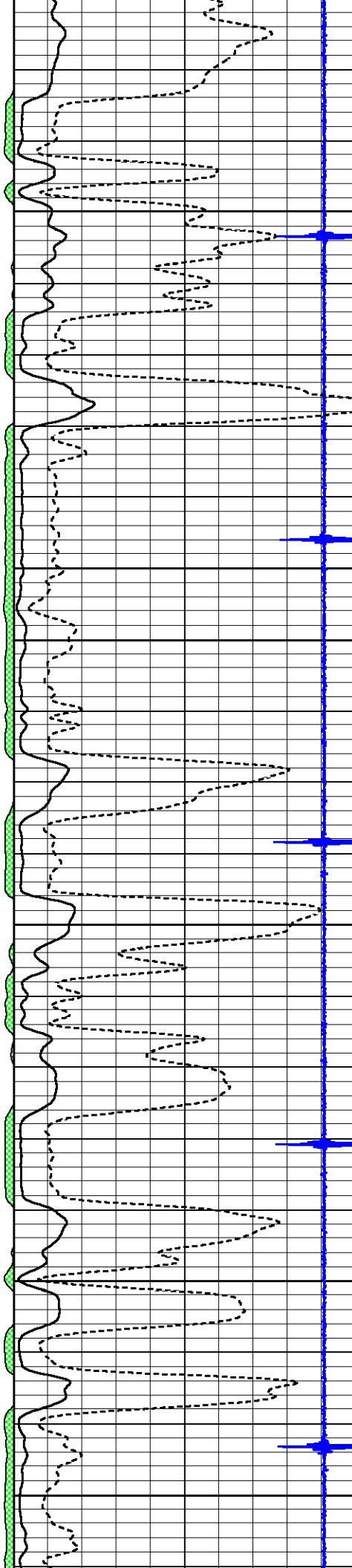


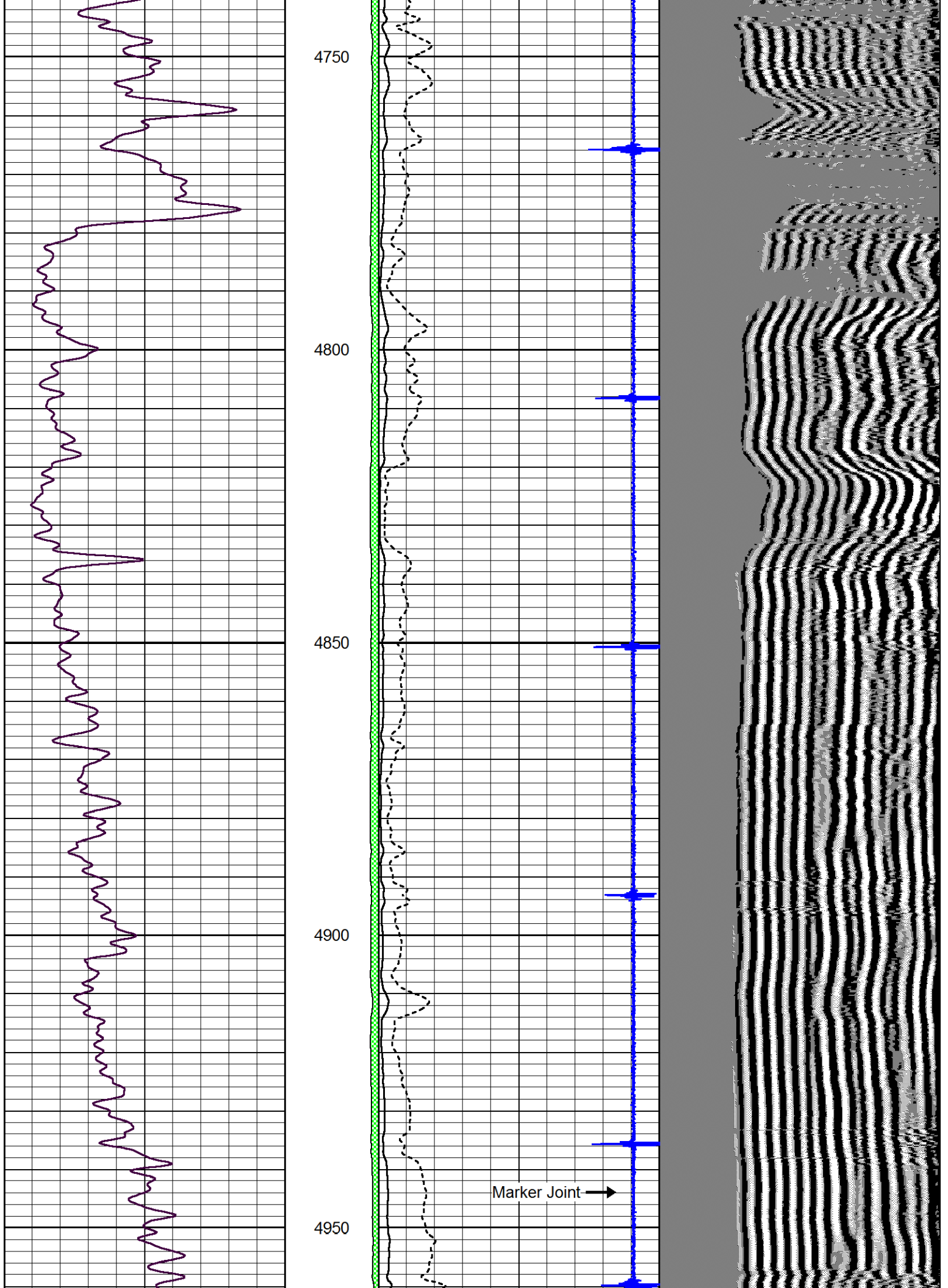
4550

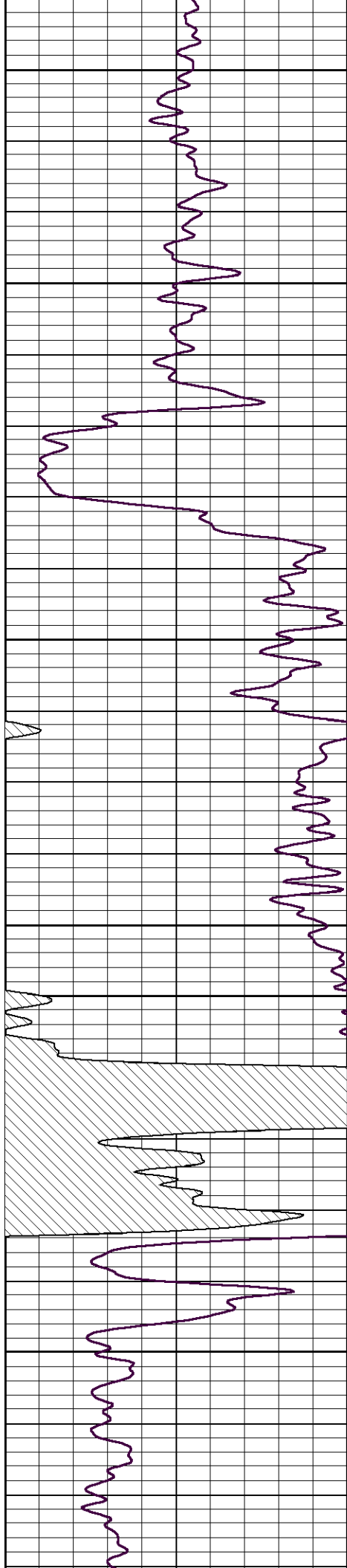
4600

4650

4700





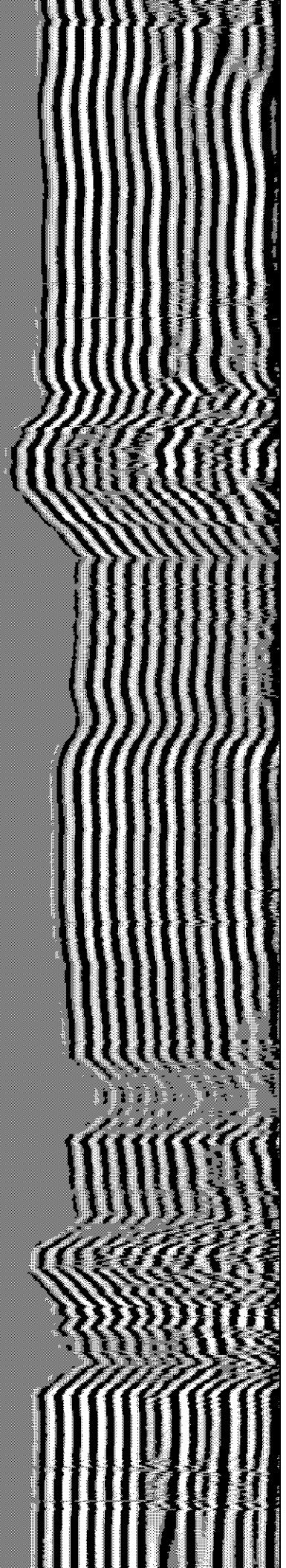
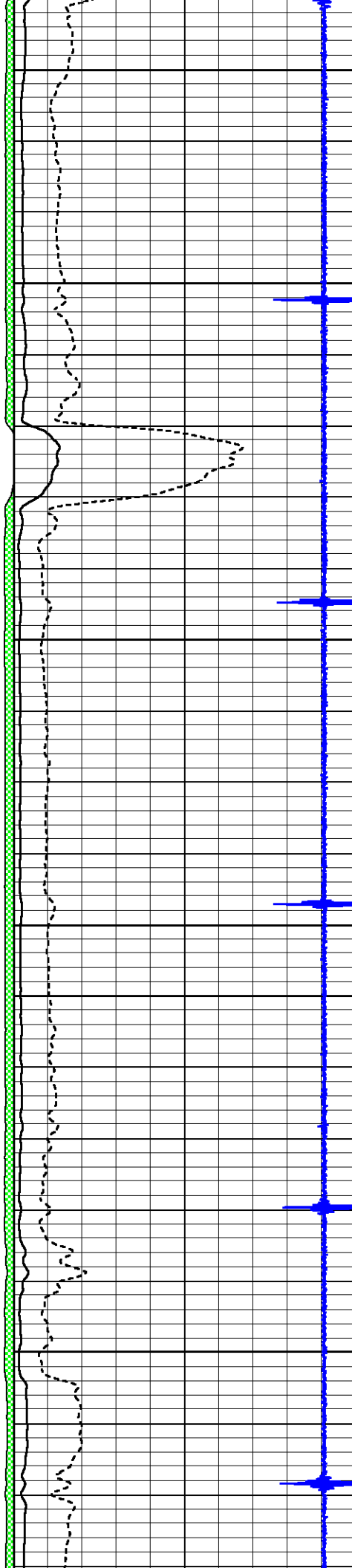


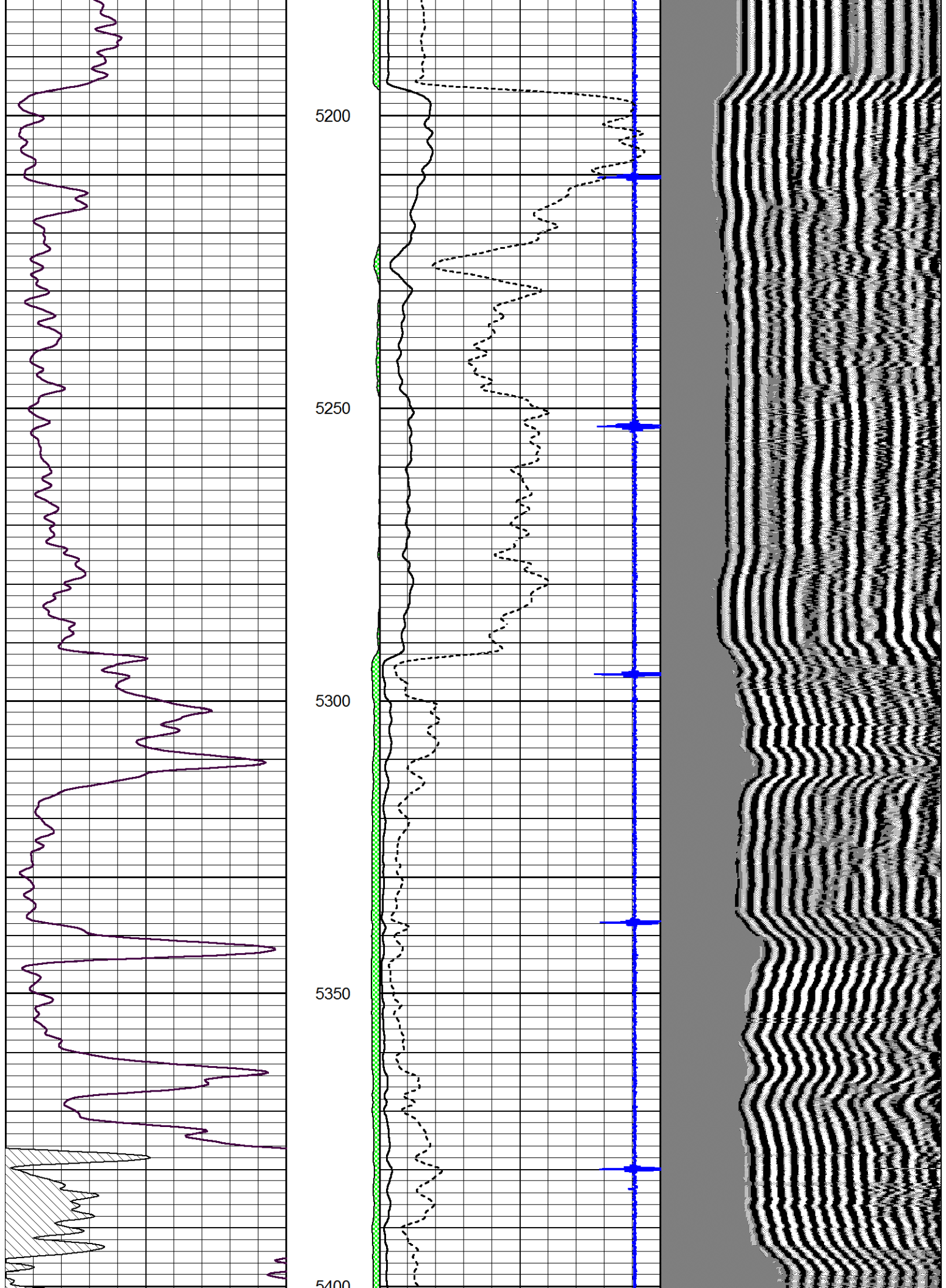
5000

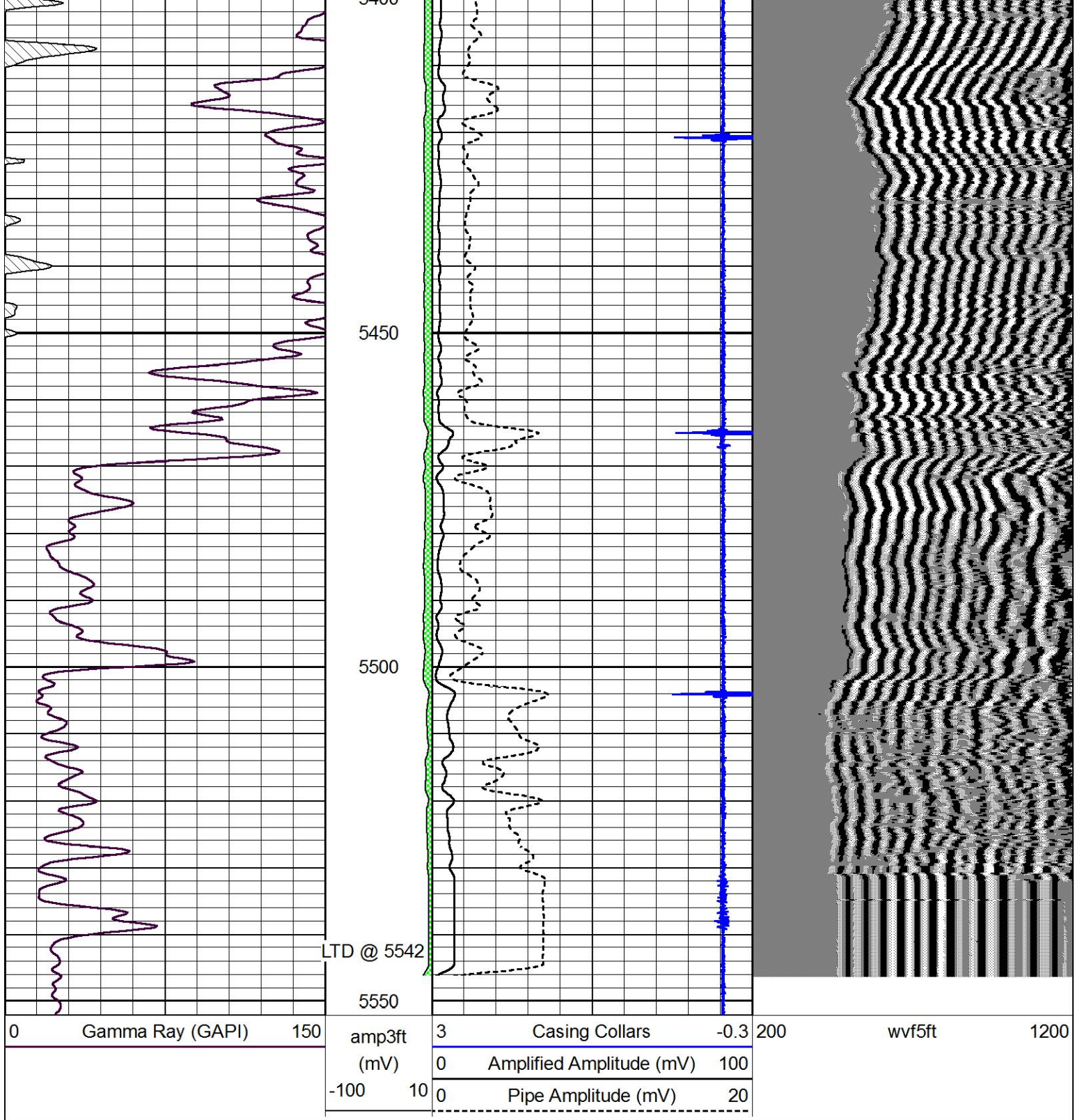
5050

5100

5150





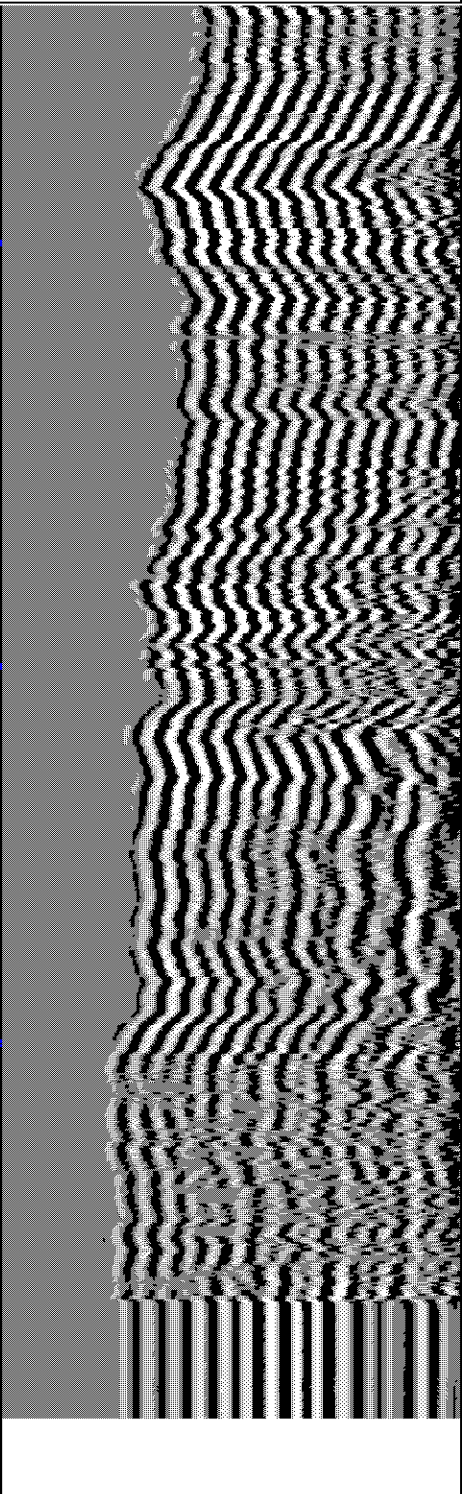
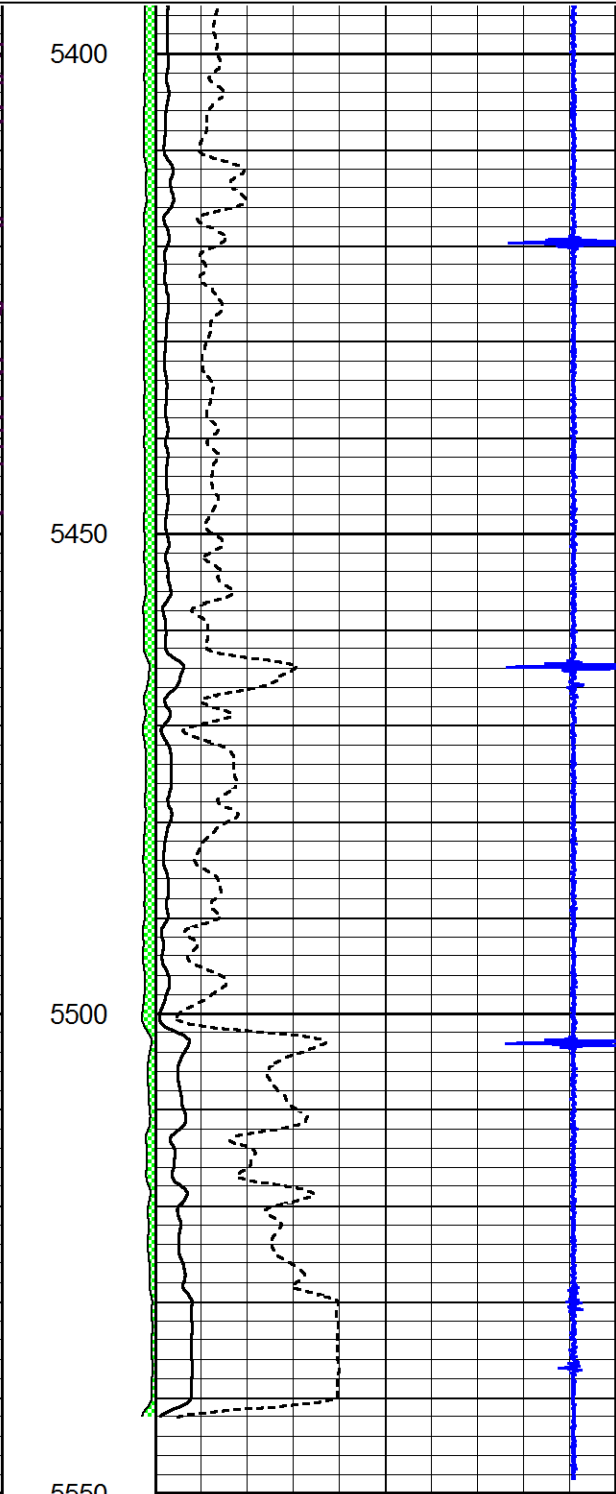
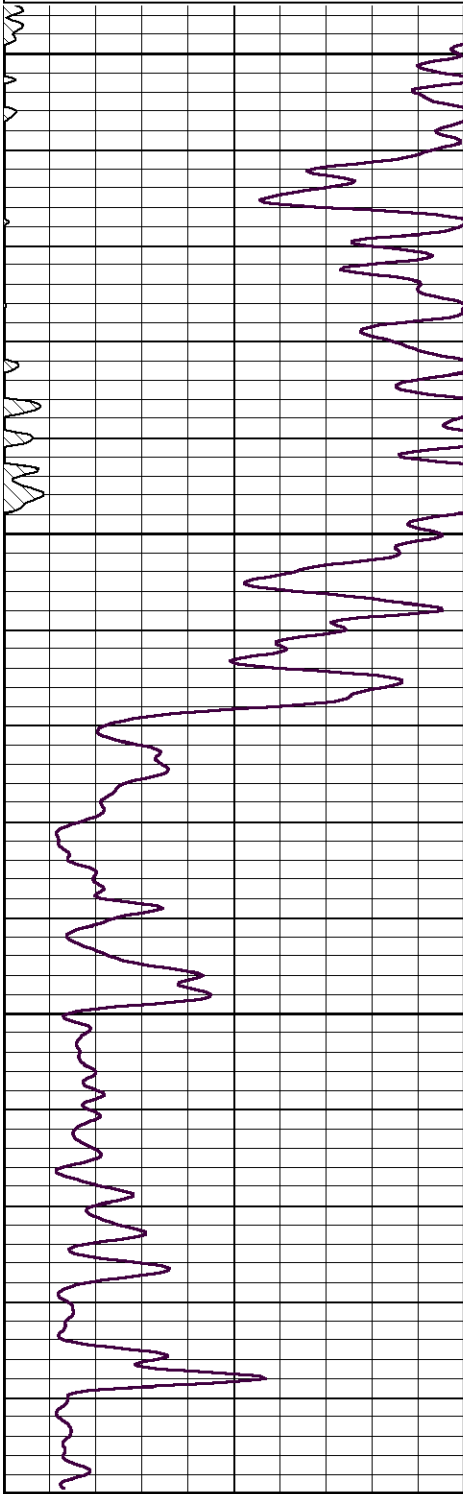


Repeat Section

Database File chieftain_achenbach_b_5.db
 Dataset Pathname grcbl/pass3
 Presentation Format cblcr
 Dataset Creation Sat Jun 28 07:58:07 2014
 Charted by Depth in Feet scaled 1:240

0	Gamma Ray (GAPI)	150	amp3ft	3	Casing Collars	-0.3	200	wvf5ft	1200
			(mV)	0	Amplified Amplitude (mV)	100			

(mV) 0 100
-100 10 0 Amplified Amplitude (mV) 20
Pipe Amplitude (mV) 20



0 Gamma Ray (GAPI) 150

5550
3 Casing Collars -0.3
amp3ft (mV) 0 Amplified Amplitude (mV) 100
-100 10 0 Pipe Amplitude (mV) 20

200 wvf5ft 1200