



**COMPLETION  
& PRODUCTION  
SERVICES CO.**

**COMPENSATED  
DENSITY / NEUTRON  
PE LOG**

Company SPECIAL ENERGY CORP.  
Well HXP #1  
Field BADGER HILL  
County EDWARDS State KANSAS

Company SPECIAL ENERGY CORP.  
Well HXP #1  
Field BADGER HILL  
County EDWARDS  
State KANSAS

Location: API #: 15-047-21646-00-00  
1650' FSL & 990' FWL  
SE - NW - SW  
SEC 1 TWP 23S RGE 19W  
Permanent Datum GROUND LEVEL Elevation 2198  
Log Measured From KELLY BUSHING 11' A.G.L.  
Drilling Measured From KELLY BUSHING  
Other Services  
DILMEL  
Elevation  
K.B. 2209  
D.F. 2207  
G.L. 2198

Date	9/16/14		
Run Number	ONE		
Depth Driller	4665		
Depth Logger	4660		
Bottom Logged Interval	4636		
Top Log Interval	2300		
Casing Driller	8 5/8 @ 860'		
Casing Logger	861'		
Bit Size	7.875		
Type Fluid in Hole	CHEMICAL MUD		
Density / Viscosity	9.4/57	CHLORIDES 12,800 PPM	
pH / Fluid Loss	9.5/12.8		
Source of Sample	FLOWLINE		
Rm @ Meas. Temp	0.40 @ 88F		
Rmf @ Meas. Temp	0.30 @ 88F		
Rmc @ Meas. Temp	0.48 @ 88F		
Source of Rmf / Rmc	MEASURED		
Rm @ BHT	0.29 @ 122F		
Time Circulation Stopped	2 HOURS		
Time Logger on Bottom			
Maximum Recorded Temperature	122F		
Equipment Number	3802		
Location	HAYS, KS.		
Recorded By	JEFF GRONEWEG		
Witnessed By	ROD ANDERSEN	GEORGE UTLEY	

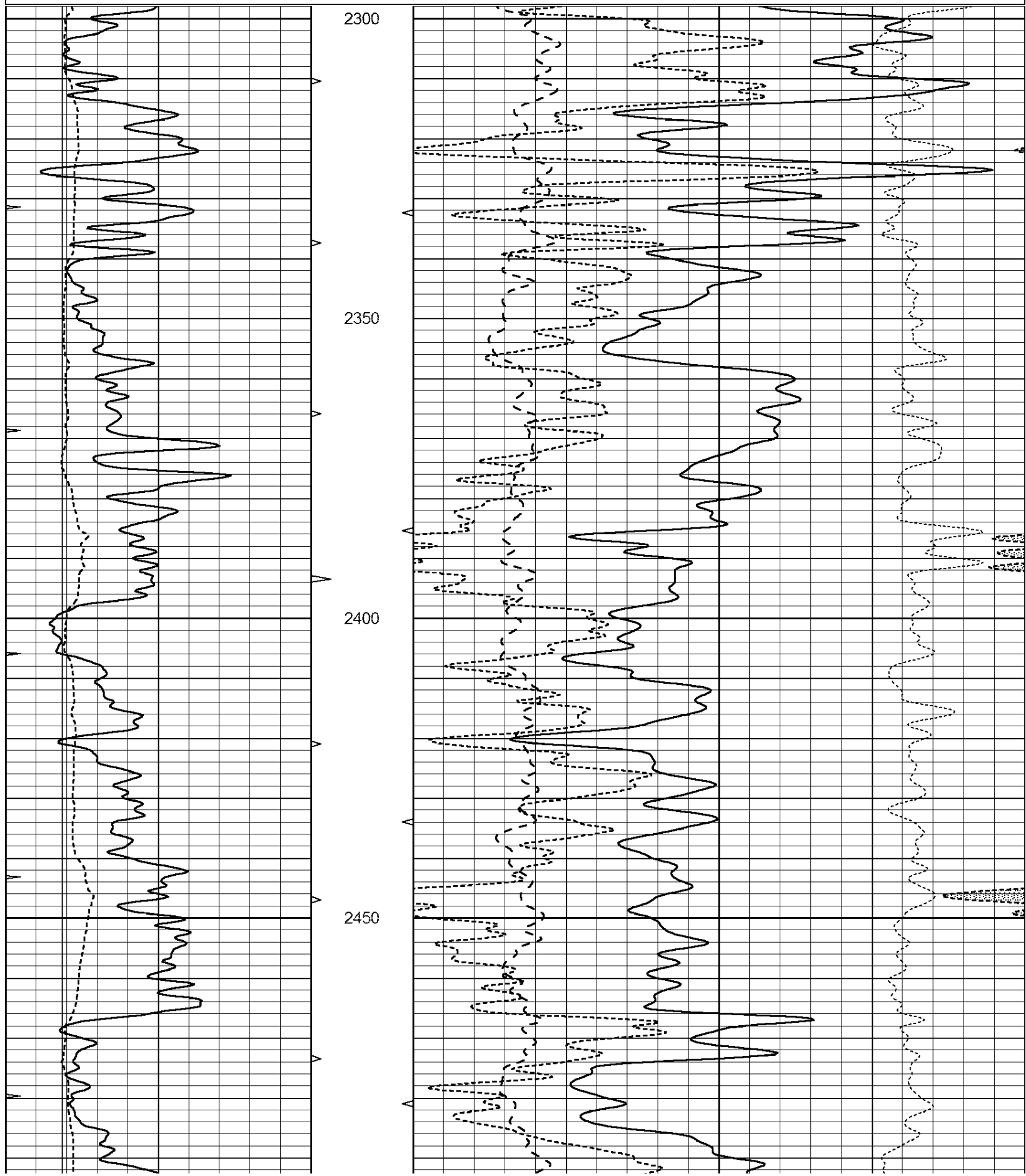
<<< Fold Here >>>

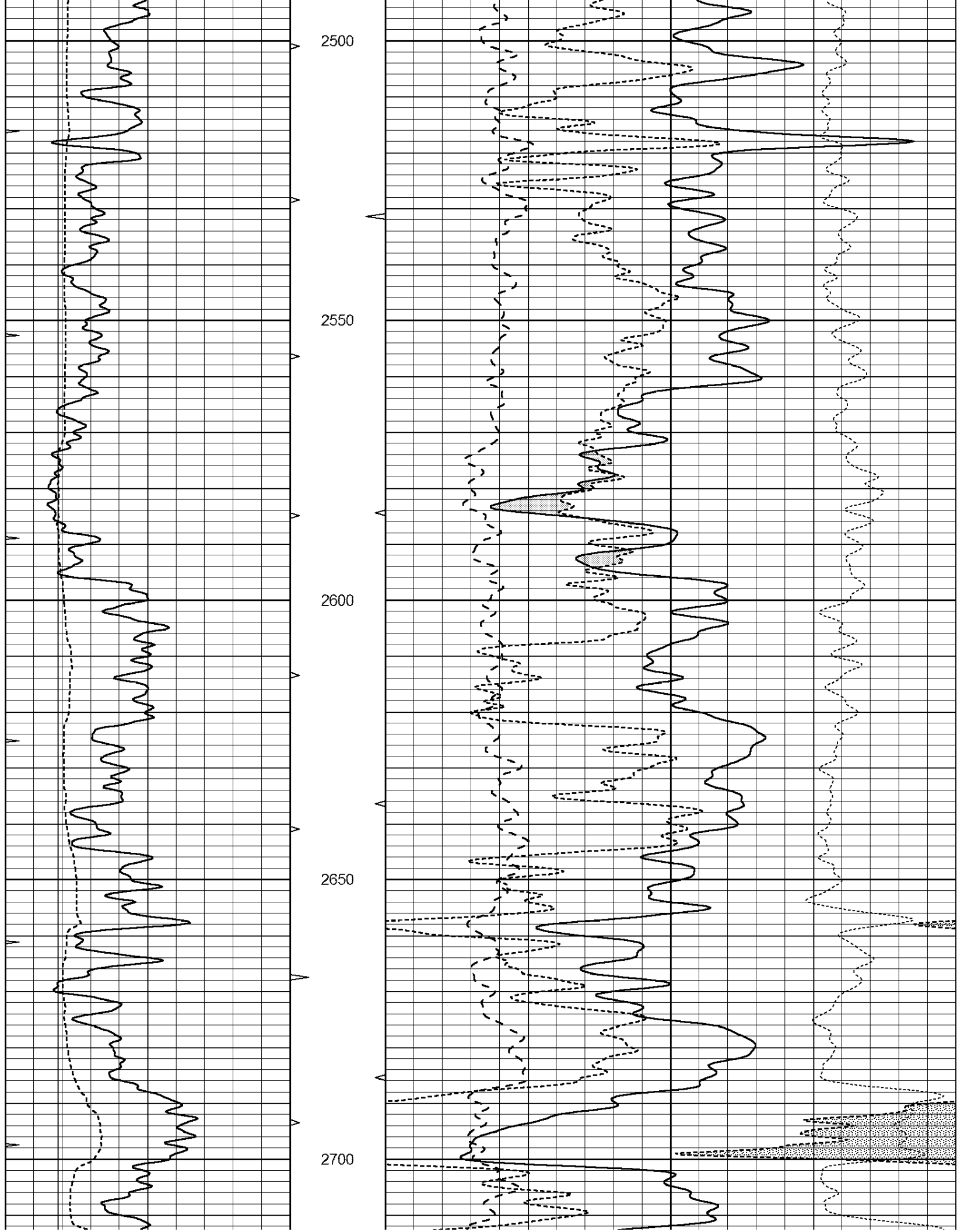
All interpretations are opinions based on inferences from electrical or other measurements and we cannot and do not guarantee the accuracy or correctness of any interpretation, and we shall not, except in the case of gross or willful negligence on our part, be liable or responsible for any loss, costs, damages, or expenses incurred or sustained by anyone resulting from any interpretation made by any of our officers, agents or employees. These interpretations are also subject to our general terms and conditions set out in our current Price Schedule.

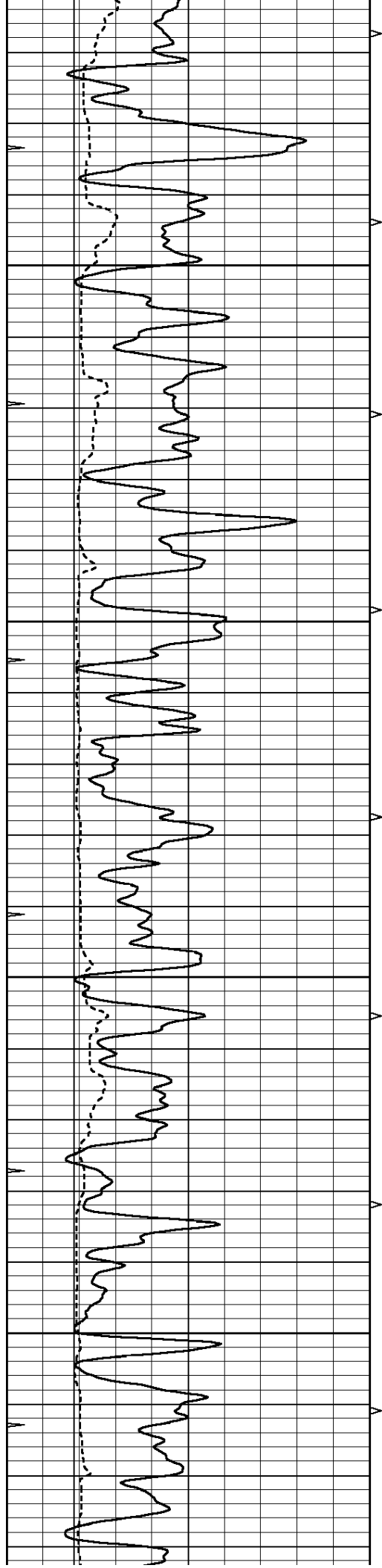
Comments

NABORS COMPLETION & PRODUCTION SERVICES CO.  
785 ( 628 - 6395 )  
THANK YOU FOR YOUR BUSINESS  
DIRECTIONS: INTERSECTION OF HWYS 183 & 56 - 2 1/2 MILES NORTH TO RD F  
3 MILES WEST - NORTH INTO

0	GAMMA RAY (GAPI)	150	ABHV	30	COMPENSATED DENSITY (pu)		-10
6	CALIPER (in)	16	10 (ft3)	0 30	COMPENSATED NEUTRON (pu)		-10
0	MINMK	20	TBHV	0	PE	10 -0.25	CORRECTION (g/cc) 0.25
			0 (ft3)	10			





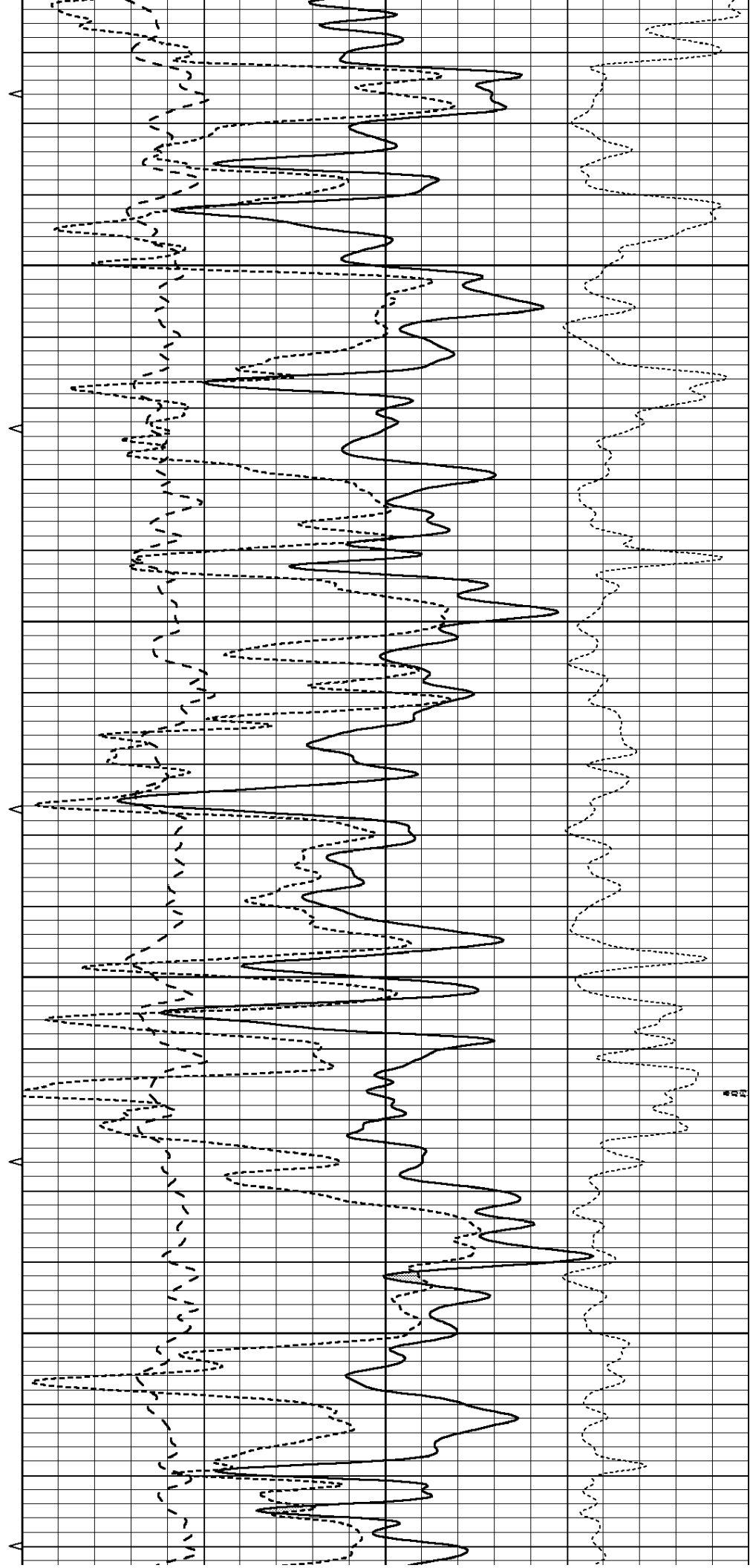


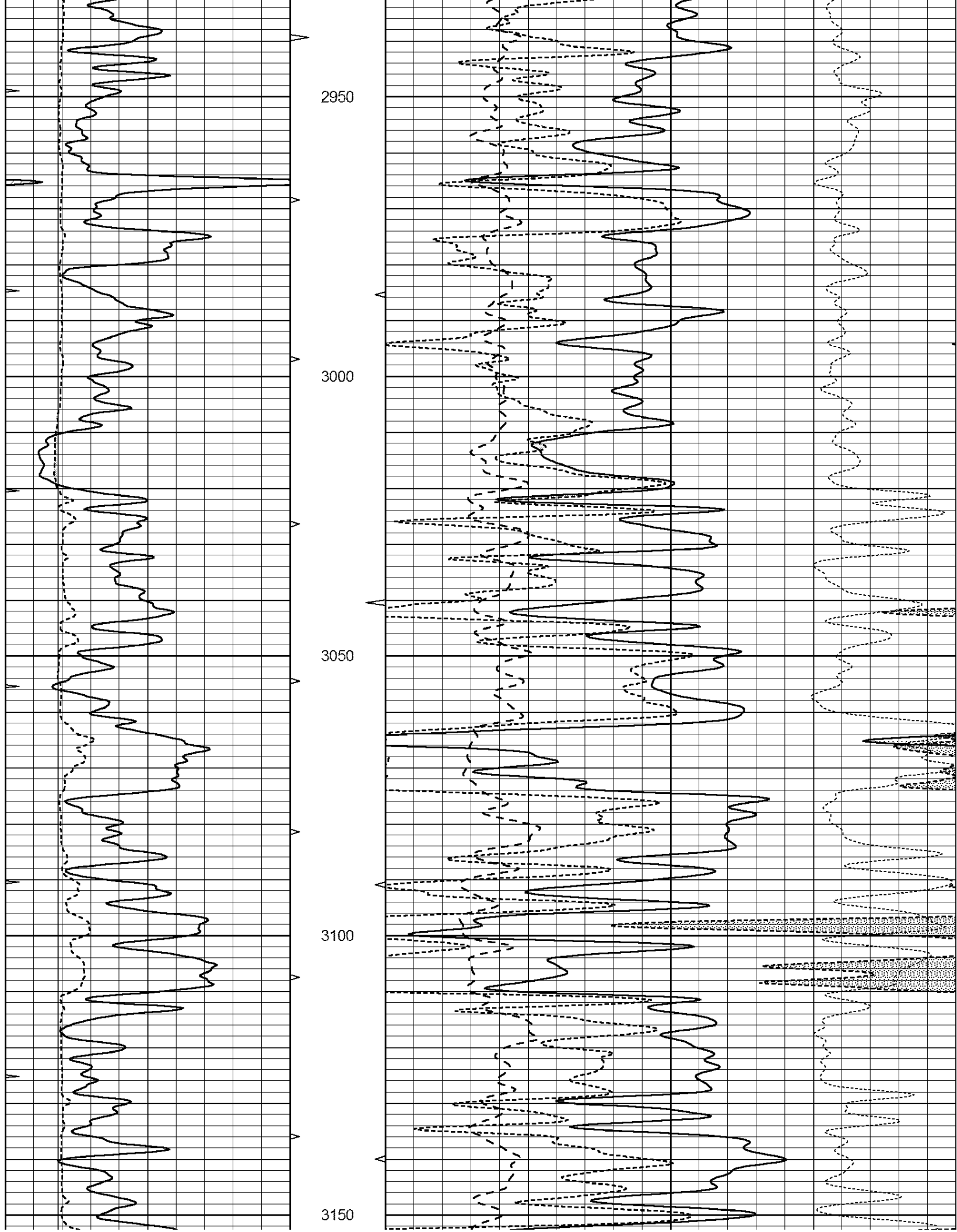
2750

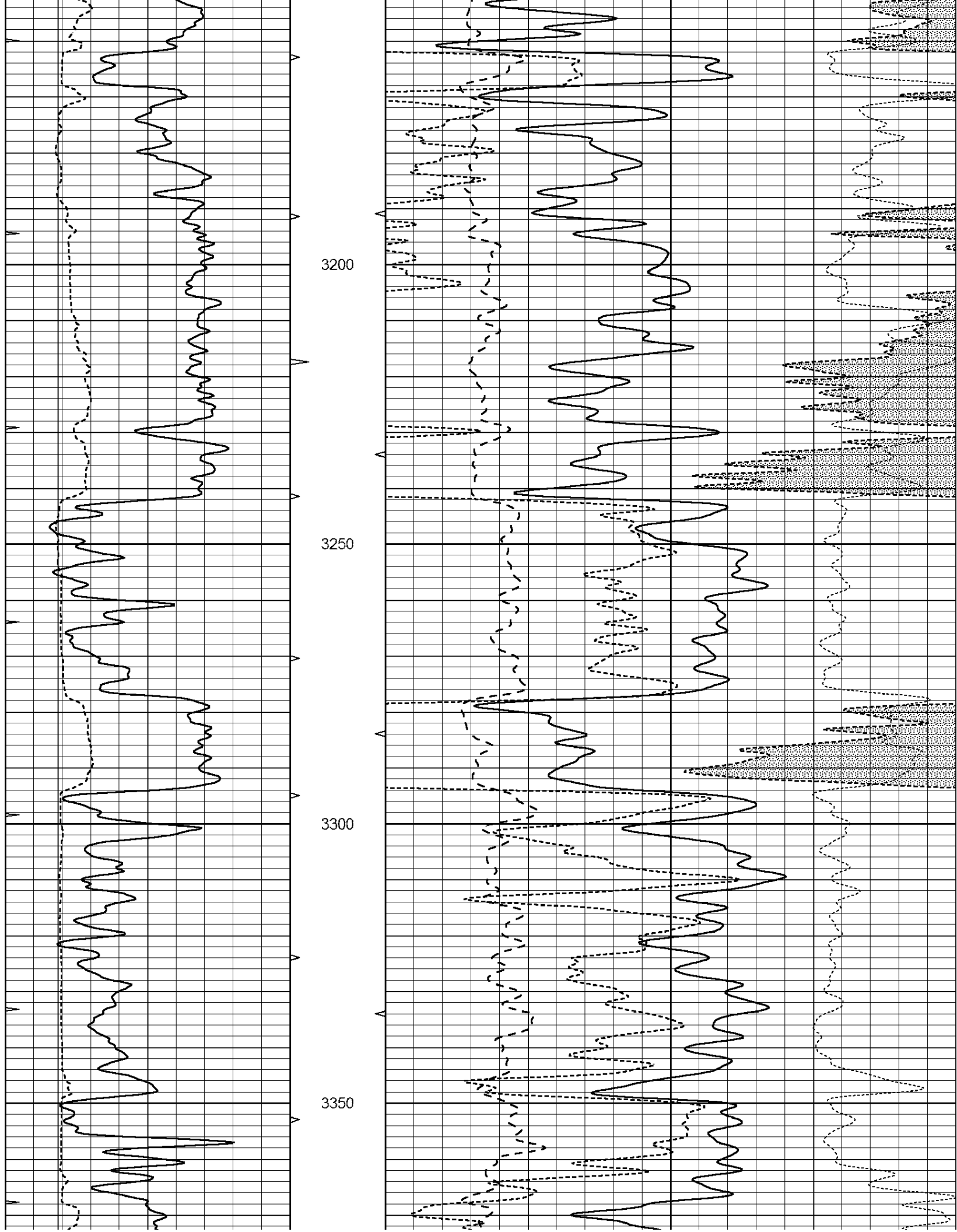
2800

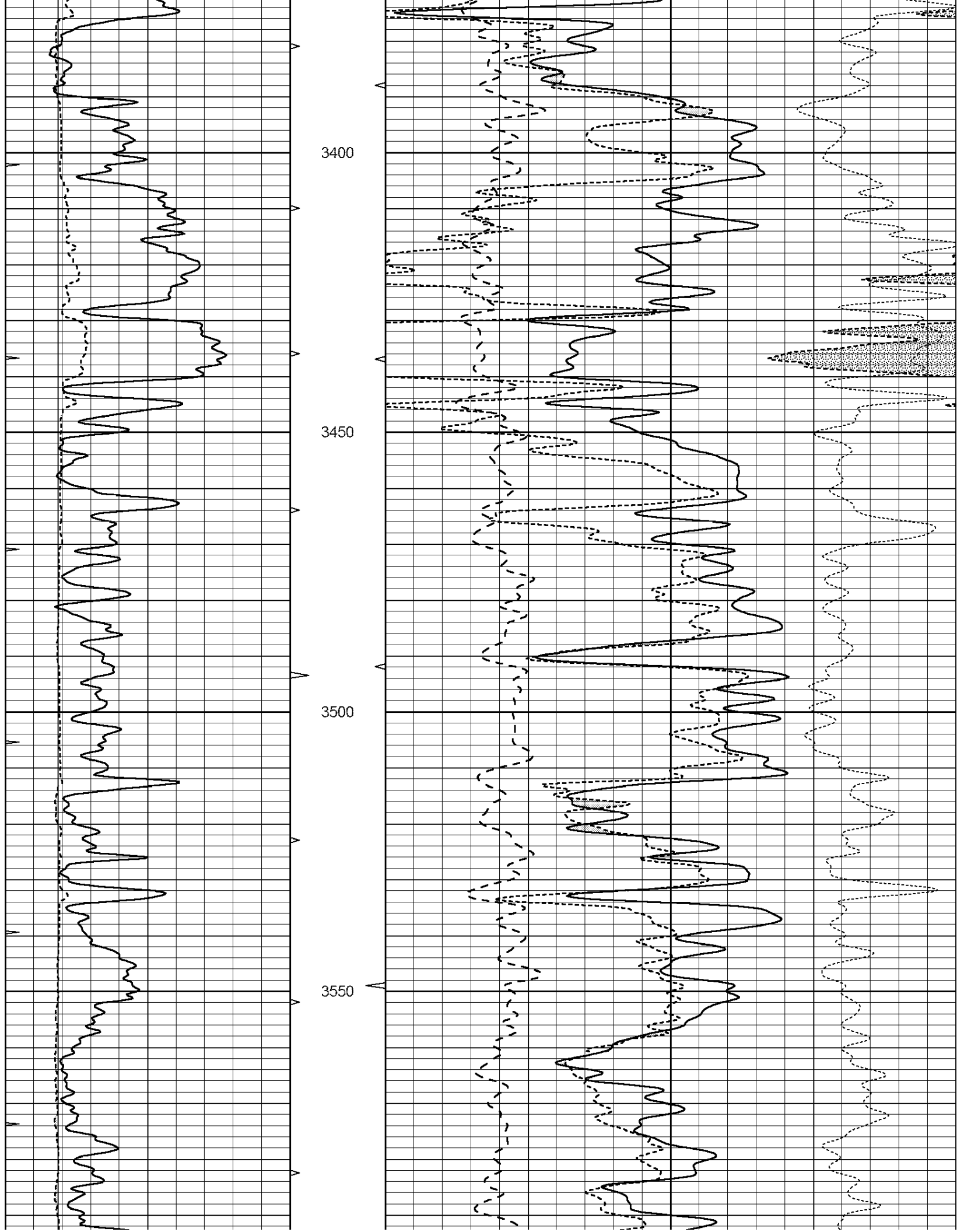
2850

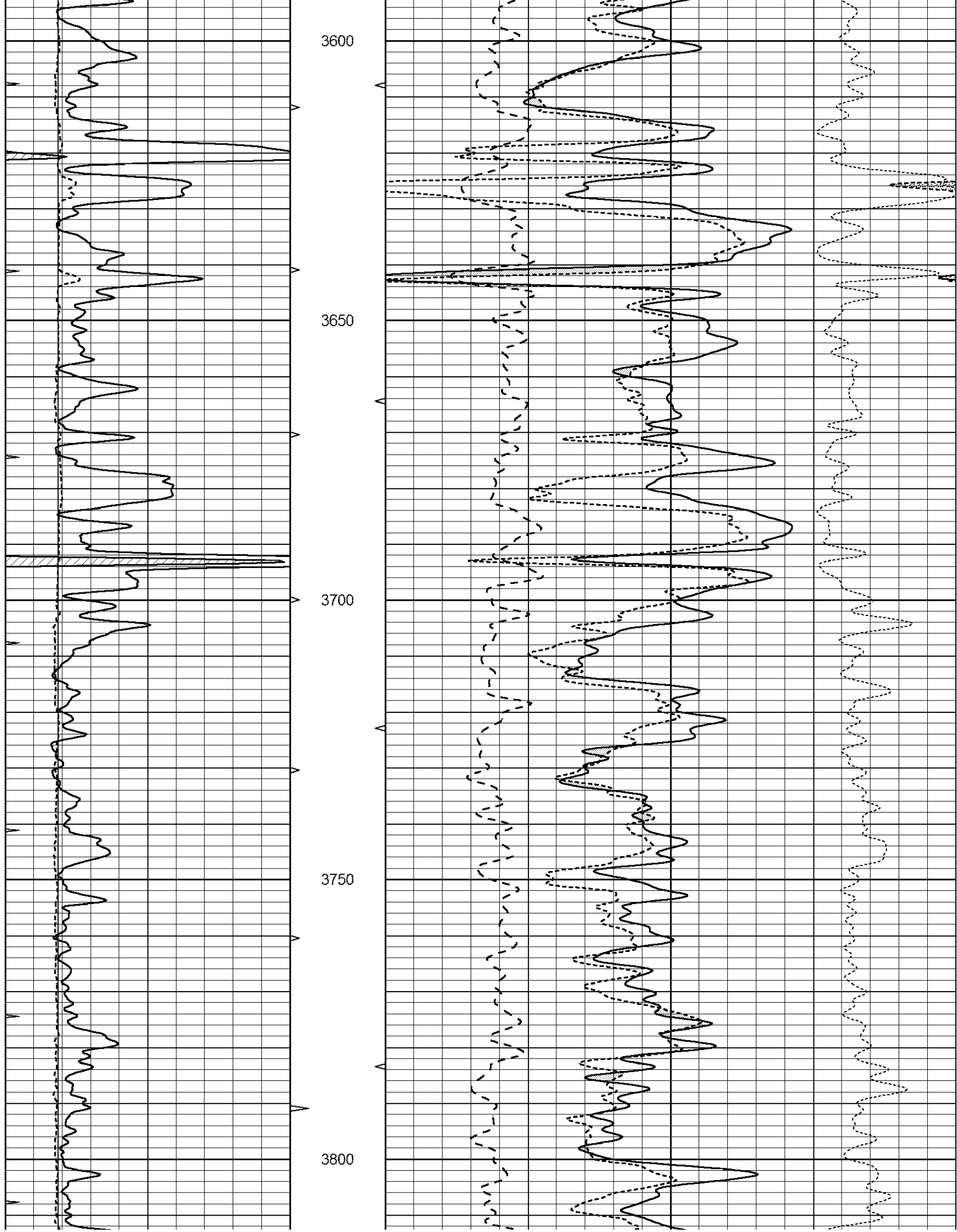
2900

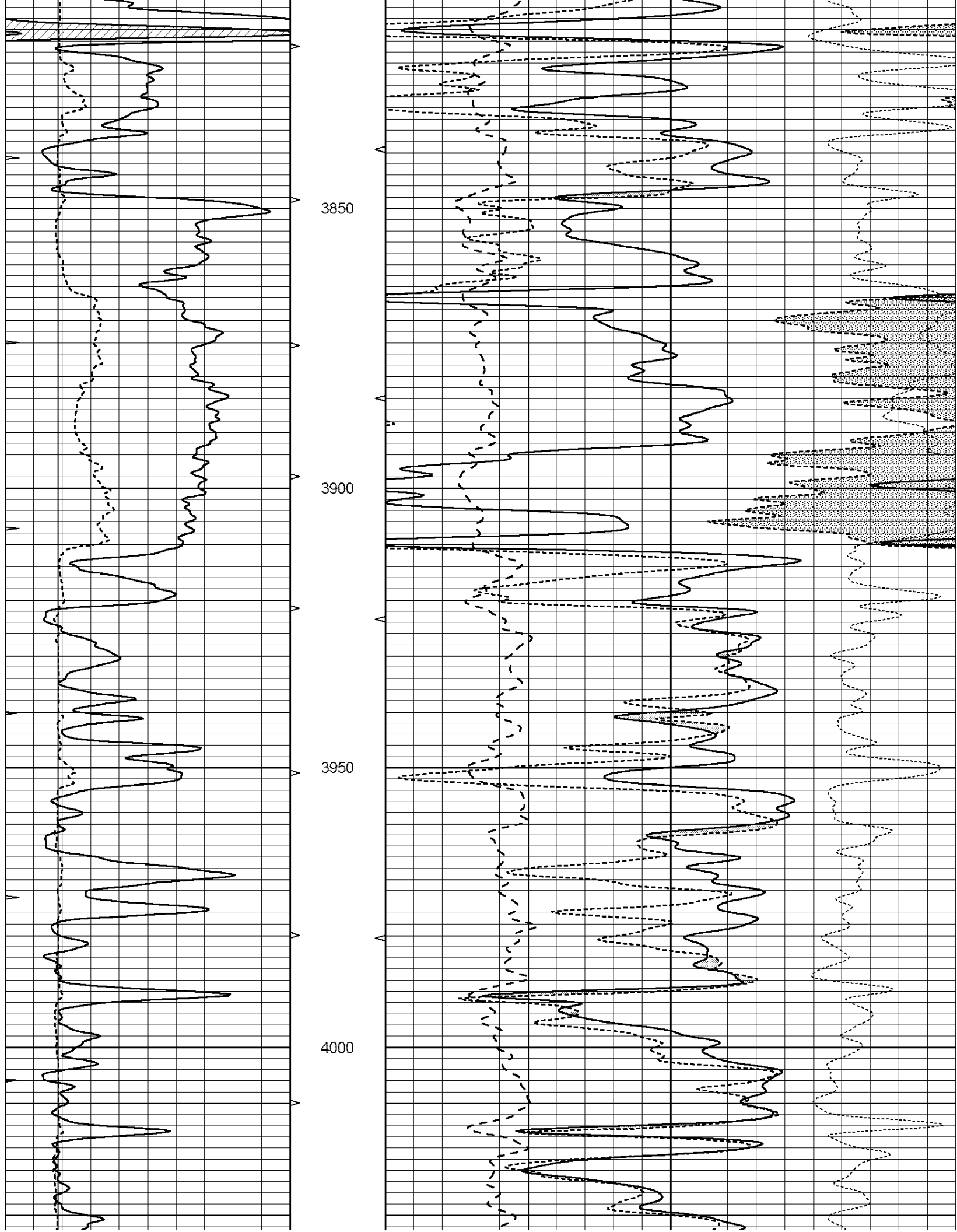


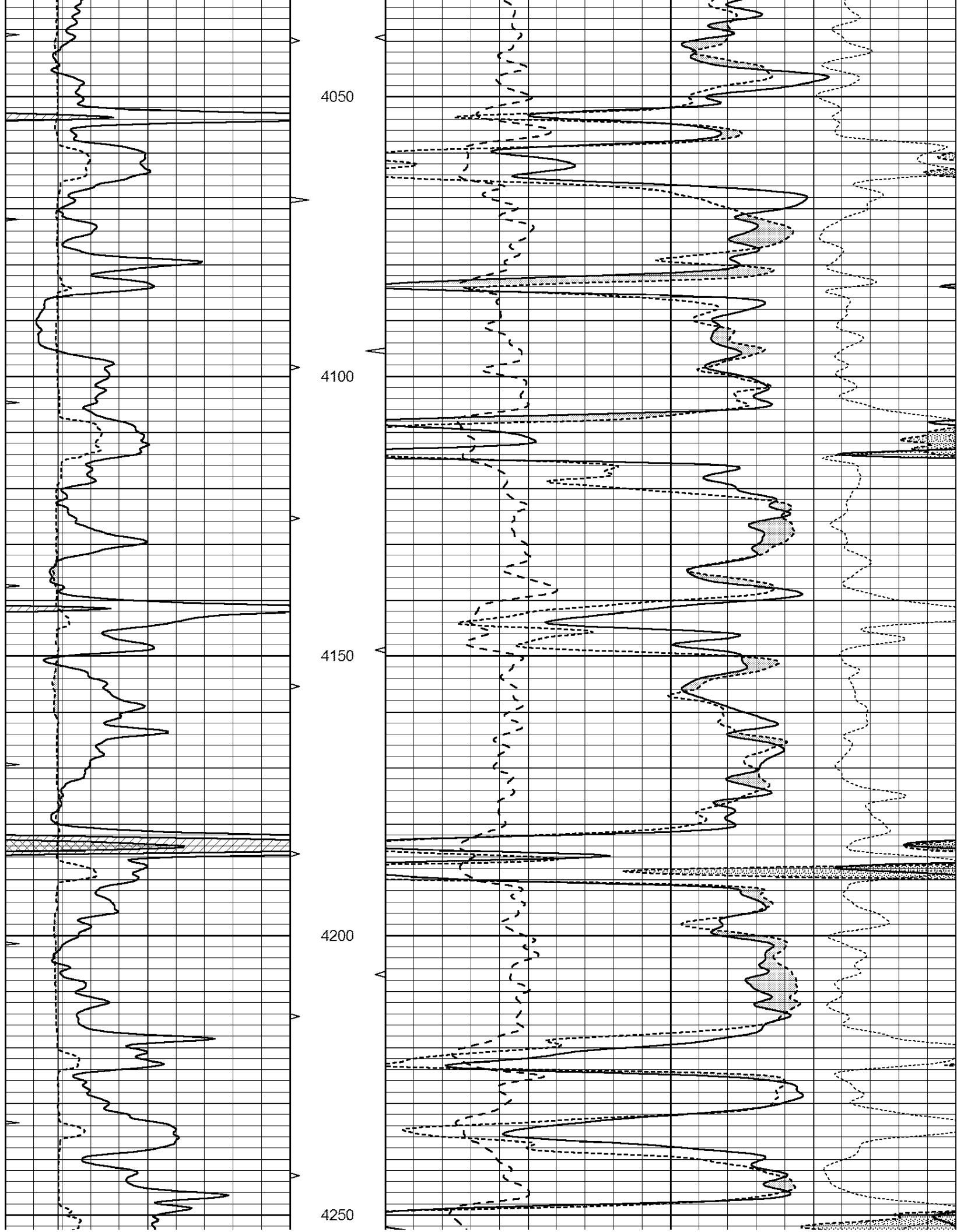


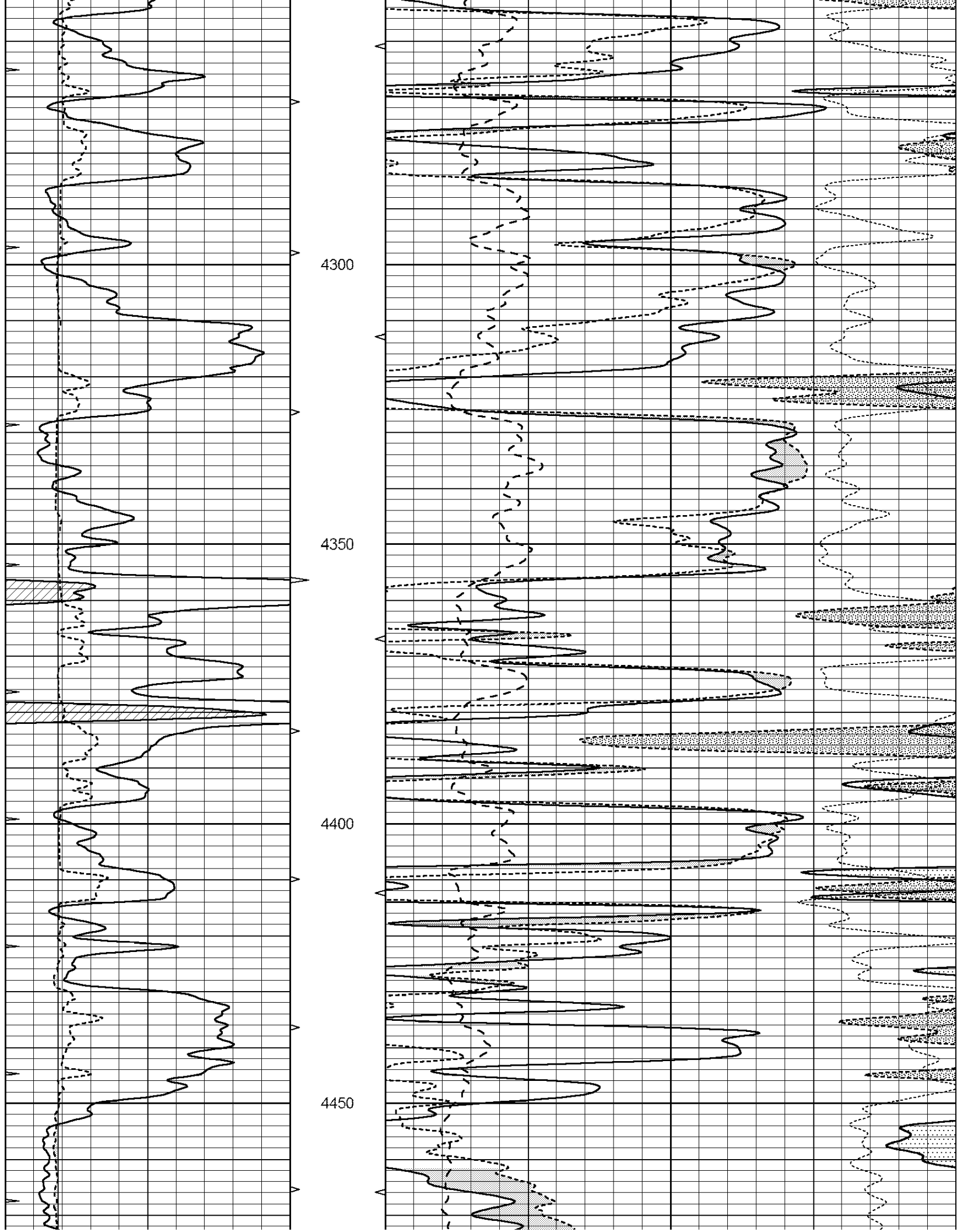


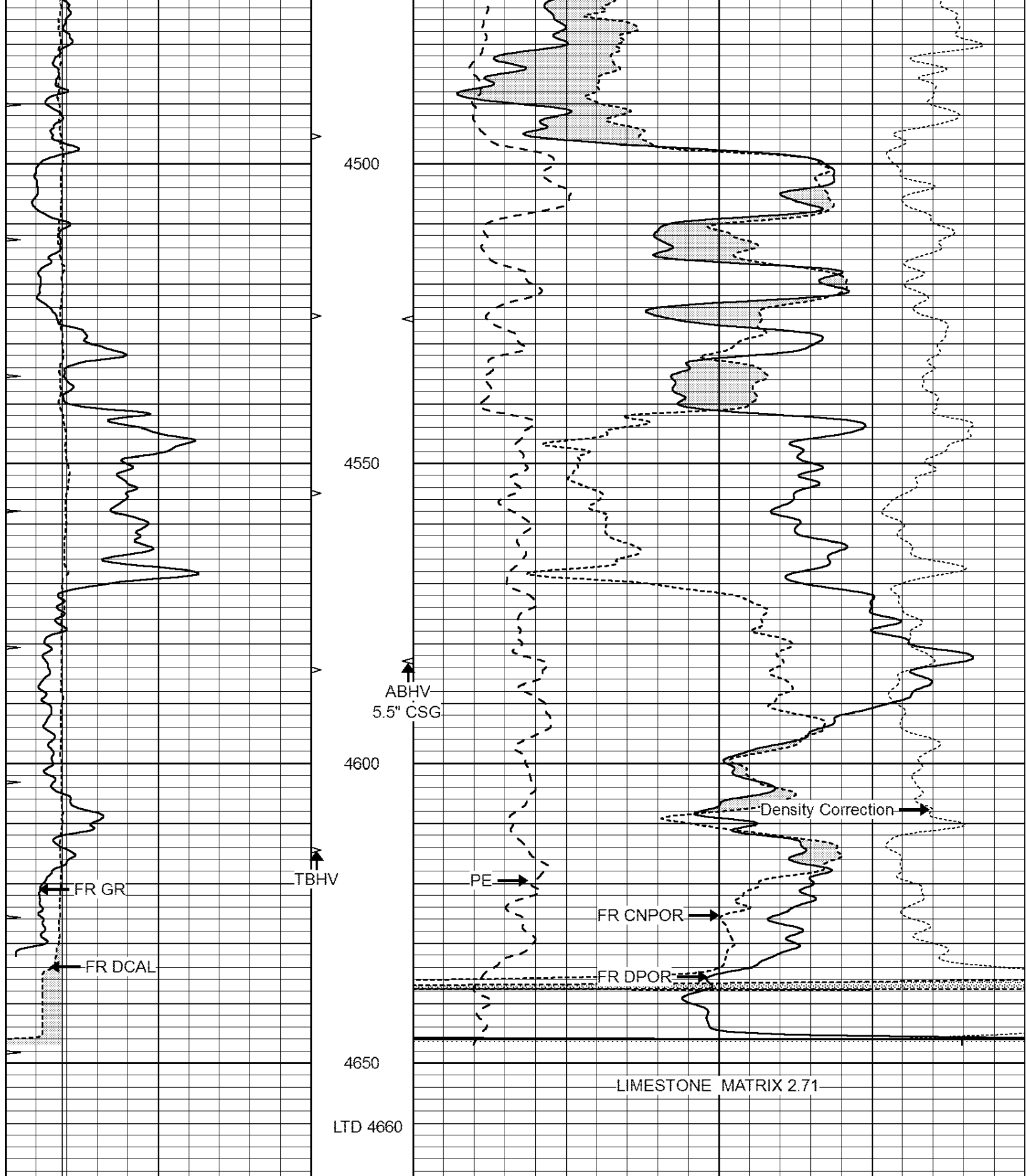












0	GAMMA RAY (GAPI)	150	ABHV	30	COMPENSATED DENSITY (pu)	-10
6	CALIPER (in)	16	10 (ft3)	0 30	COMPENSATED NEUTRON (pu)	-10
0	MINMK	20	TBHV	0	PE	10 -0.25
			0 (ft3)	10		CORRECTION (g/cc) 0.25

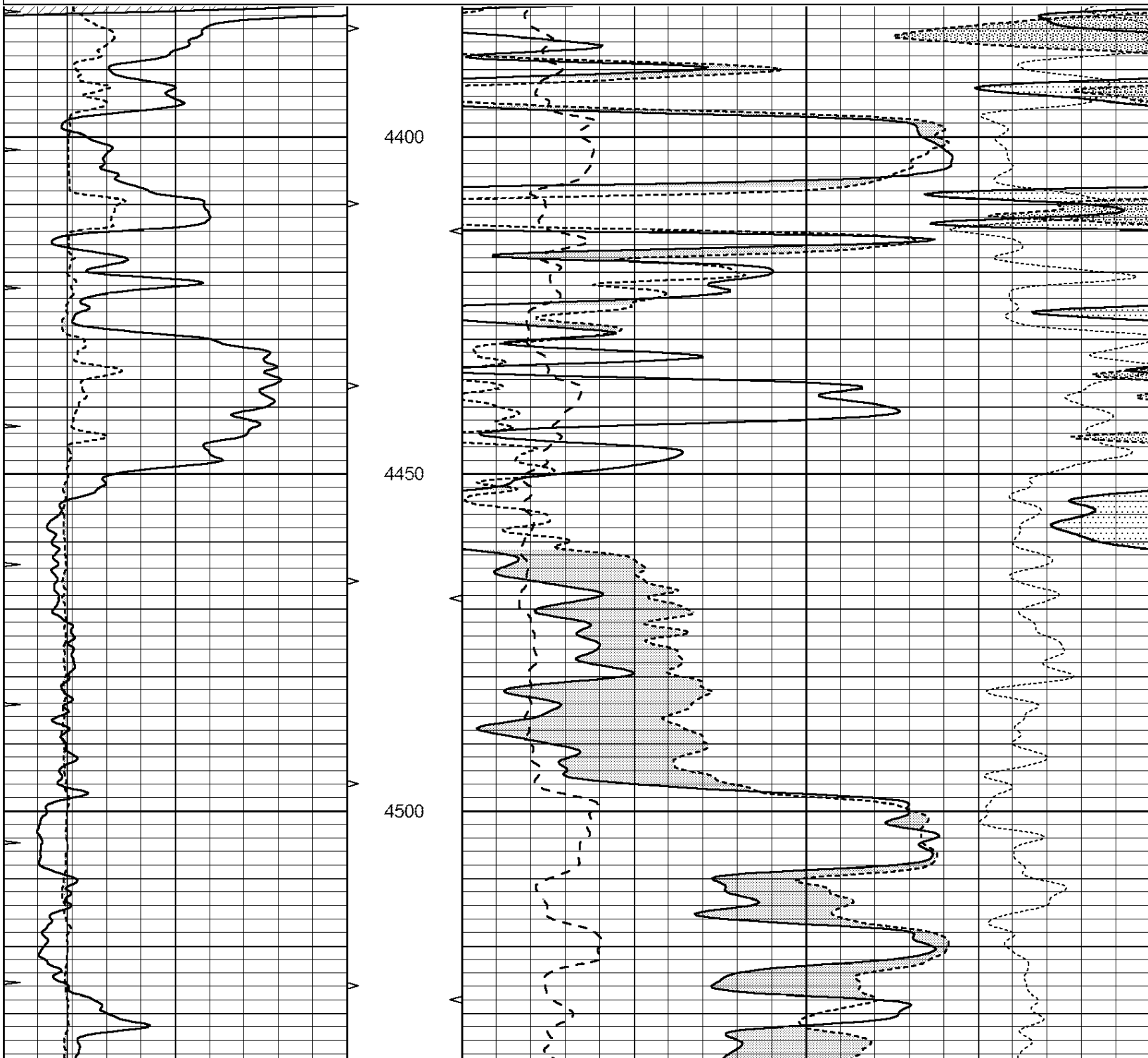


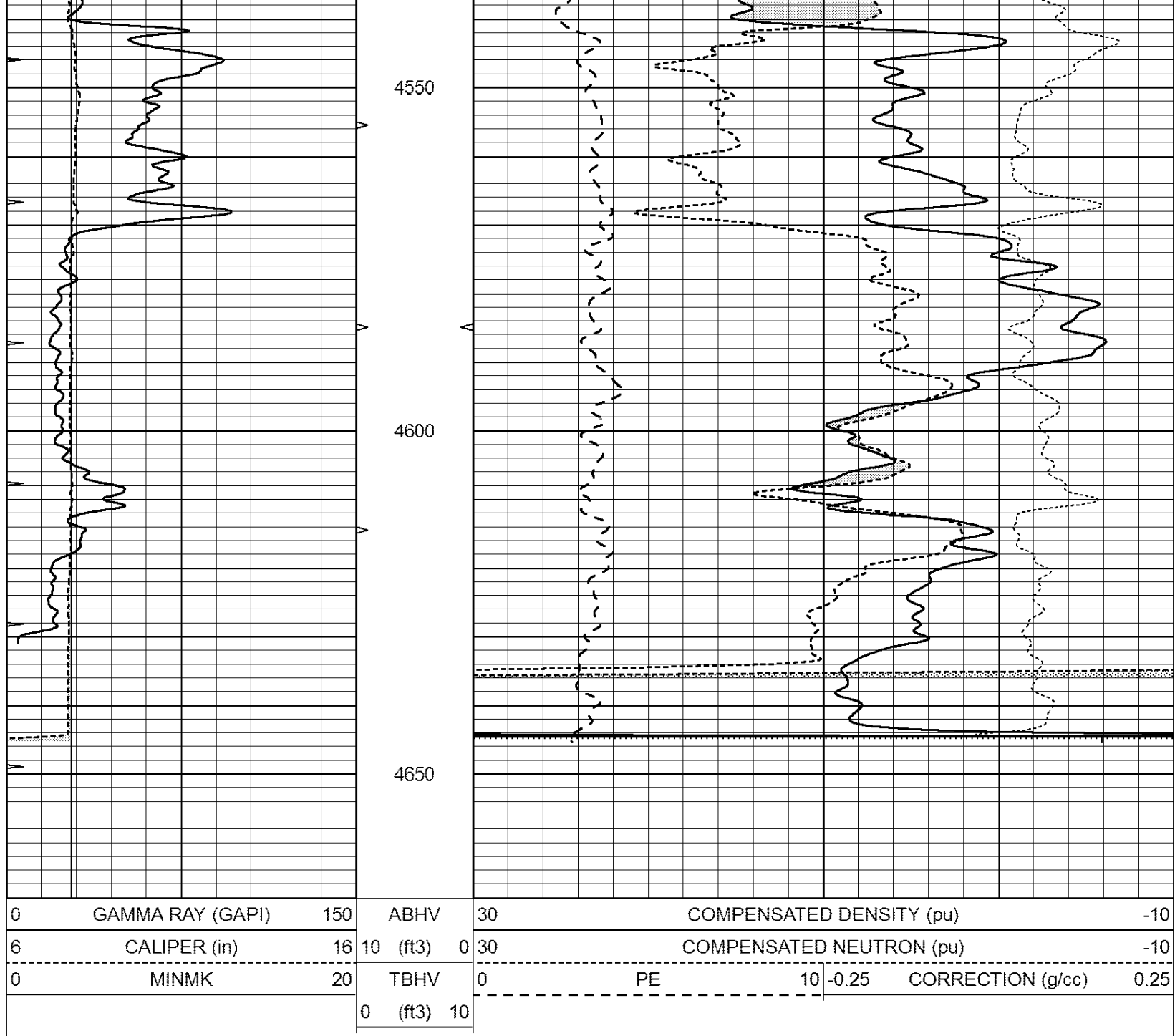
**COMPLETION  
& PRODUCTION  
SERVICES CO.**

# REPEAT SECTION

Database File: 25818pe.db  
 Dataset Pathname: pass2.2  
 Presentation Format: \_ldt\_neu  
 Dataset Creation: Tue Sep 16 15:28:50 2014 by Calc Open-Cased 090629  
 Charted by: Depth in Feet scaled 1:240

0	GAMMA RAY (GAPI)	150	ABHV	30	COMPENSATED DENSITY (pu)		-10
6	CALIPER (in)	16	10 (ft3)	0	COMPENSATED NEUTRON (pu)		-10
0	MINMK	20	TBHV	0	PE	10	-0.25 CORRECTION (g/cc) 0.25
			0 (ft3) 10				





### Calibration Report

Database File: 25818pe.db  
 Dataset Pathname: pass3.1  
 Dataset Creation: Tue Sep 16 16:46:14 2014 by Calc Open-Cased 090629

### Dual Induction Calibration Report

Serial-Model: PROBE7-DILG  
 Surface Cal Performed: Fri Sep 12 18:11:27 2014  
 Downhole Cal Performed: Sat Jan 19 19:51:38 2013  
 After Survey Verification Performed: Sat Jan 19 19:51:38 2013

#### Surface Calibration

Loop:	Readings			V	References		Results		
	Air	Loop			Air	Loop	m	b	
Deep	0.793	0.790		V	0.000	400.000	mmho/m	550.000	4.000
Medium	0.992	1.002		V	0.000	464.000	mmho/m	580.000	-48.000

Internal:	Zero	Cal		Zero	Cal		m	b
Deep	0.041	0.642	V	0.000	400.000	mmho/m	664.874	-27.011
Medium	0.035	0.802	V	0.000	464.000	mmho/m	604.936	-21.367

Downhole Calibration								
	Readings			References			Results	
	Zero	Cal		Zero	Cal		m'	b'
Deep	135384.000	27094.500	mmho/m	135400.000	27082.400	mmho/m	1.000	-19.259
Medium	-47330.100	-9381.740	mmho/m	-47327.100	-9389.280	mmho/m	1.000	-10.154
LL3		7.322	V		1400.000	Ohm-m		
		0.038	V		20.000	Ohm-m		
		-7.273	V		4000.000	mmho-m		

After Survey Verification								
	Readings			Targets			Results	
	Zero	Cal		Zero	Cal		m'	b'
Deep	0.000	0.000	mmho/m	135384.000	27094.500	mmho/m	1.000	0.000
Medium	0.000	0.000	mmho/m	-47330.100	-9381.740	mmho/m	1.000	0.000
LL3		0.000	Ohm-m		1400.000	Ohm-m		
		0.000	Ohm-m		20.000	Ohm-m		
		0.000	mmho-m		4000.000	mmho-m		

Litho Density Calibration Report  
Serial: 002      Model: PRB

Master Calibration								
Performed Tue May 27 11:05:38 2014								
	Background		Magnesium		Aluminum		Sandstone	
Window 1	819.4		6916.8		2053.5		6968.1	cps
Window 2	780.4		5708.6		1783.3		5727.0	cps
Window 3	656.9		3349.4		1194.5		3336.6	cps
Window 4	187.3		183.4		186.5		186.2	cps
Long Space	0.0		4928.2		1002.9		4946.6	cps
Short Space	1.2		1266.1		819.1		1290.7	cps
Rho			1.7100		2.5960		1.3800	g/cc
Pe			0.0000		2.5700		1.5500	
Rib Angle	: 44.7		Rib Slope	: 0.990	Density/Spine Ratio		: 0.537	
Spine Angle	: 74.7		Spine Slope	: 3.655	Spine Intercept		: -17.6	

Before Survey Verification								
Performed Wed Dec 31 18:00:00 1969								
	Background		Magnesium		Aluminum		Sandstone	
Window 1	0.0		0.0		0.0		0.0	cps
Window 2	0.0		0.0		0.0		0.0	cps
Window 3	0.0		0.0		0.0		0.0	cps
Window 4	0.0		0.0		0.0		0.0	cps
Long Space	0.0		0.0		0.0		0.0	cps
Short Space	0.0		0.0		0.0		0.0	cps
Measured Rho			0.0000		0.0000		0.0000	g/cc
Measured Correction			0.0000		0.0000		0.0000	g/cc
Measured Pe					0.0000		0.0000	

After Survey Verification								
Performed Wed Dec 31 18:00:00 1969								
	Background		Magnesium		Aluminum		Sandstone	
Window 1	0.0		0.0		0.0		0.0	cps
Window 2	0.0		0.0		0.0		0.0	cps
Window 3	0.0		0.0		0.0		0.0	cps

Window 4	0.0	0.0	0.0	0.0	cps
Long Space	0.0	0.0	0.0	0.0	cps
Short Space	0.0	0.0	0.0	0.0	cps
Measured Rho		0.0000	0.0000	0.0000	g/cc
Measured Correction		0.0000	0.0000	0.0000	g/cc
Measured Pe			0.0000	0.0000	

Compensated Neutron Calibration Report

Serial Number: 080620  
Tool Model: Probe

PRE-SURVEY VERIFICATION

Detector	Readings	Measured	Target
Short Space	cps		
Long Space	cps	pu	pu

POST-SURVEY VERIFICATION

Detector	Readings	Measured	Target
Short Space	cps		
Long Space	cps	pu	pu

Gamma Ray Calibration Report

Serial Number: 46001  
Tool Model: Probe1  
Performed: Fri Sep 12 17:20:19 2014

Calibrator Value: 1.0 GAPI

Background Reading: 0.0 cps  
Calibrator Reading: 1.0 cps

Sensitivity: 0.2600 GAPI/cps