



**COMPLETION
& PRODUCTION
SERVICES CO.**

**DUAL
INDUCTION
LOG**

Company SPECIAL ENERGY CORP.
Well HXP #1
Field BADGER HILL
County EDWARDS State KANSAS

Company SPECIAL ENERGY CORP.
Well HXP #1
Field BADGER HILL
County EDWARDS
State KANSAS

Location: API #: 15-047-21646-00-00
1650' FSL & 990' FWL
SE - NW - SW
SEC 1 TWP 23S RGE 19W
Permanent Datum GROUND LEVEL Elevation 2198
Log Measured From KELLY BUSHING 11' A.G.L.
Drilling Measured From KELLY BUSHING
Other Services
CDL/CNL
PEMEL
Elevation
K.B. 2209
D.F. 2207
G.L. 2198

Date	9/16/14		
Run Number	ONE		
Depth Driller	4665		
Depth Logger	4660		
Bottom Logged Interval	4658		
Top Log Interval	0		
Casing Driller	8 5/8 @ 860'		
Casing Logger	861'		
Bit Size	7.875		
Type Fluid in Hole	CHEMICAL MUD		
Density / Viscosity	9.4/57	CHLORIDES 12,800 PPM	
pH / Fluid Loss	9.5/12.8		
Source of Sample	FLOWLINE		
Rm @ Meas. Temp	0.40 @ 88F		
Rmf @ Meas. Temp	0.30 @ 88F		
Rmc @ Meas. Temp	0.48 @ 88F		
Source of Rmf / Rmc	MEASURED		
Rm @ BHT	0.29 @ 122F		
Time Circulation Stopped	2 HOURS		
Time Logger on Bottom			
Maximum Recorded Temperature	122F		
Equipment Number	3802		
Location	HAYS, KS.		
Recorded By	JEFF GRONIEWEG		
Witnessed By	ROD ANDERSEN	GEORGE UTELY	

<<< Fold Here >>>

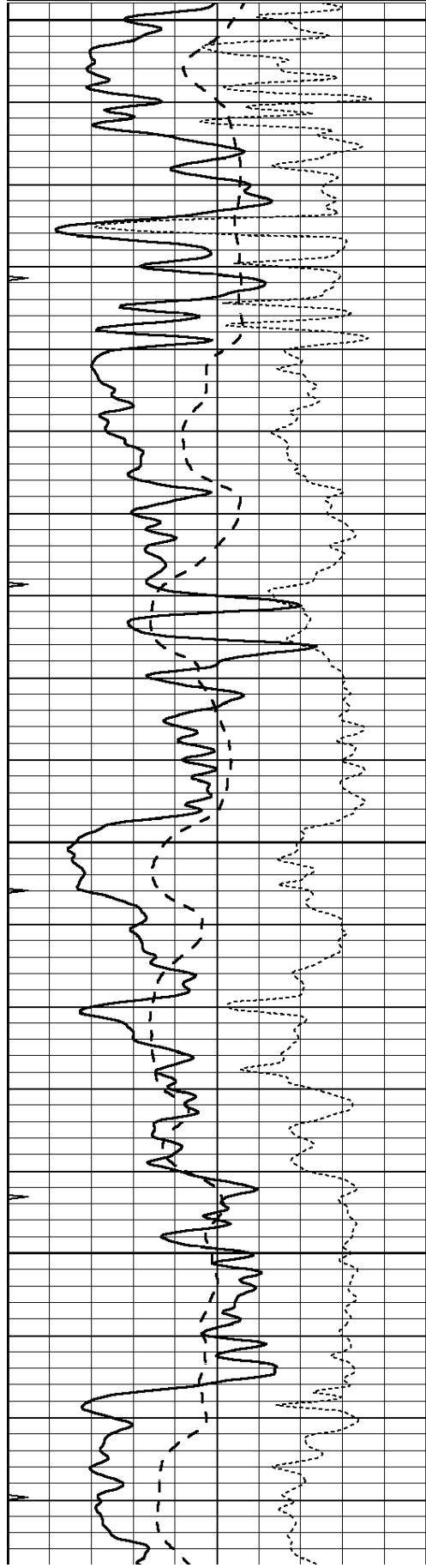
All interpretations are opinions based on inferences from electrical or other measurements and we cannot and do not guarantee the accuracy or correctness of any interpretation, and we shall not, except in the case of gross or willful negligence on our part, be liable or responsible for any loss, costs, damages, or expenses incurred or sustained by anyone resulting from any interpretation made by any of our officers, agents or employees. These interpretations are also subject to our general terms and conditions set out in our current Price Schedule.

Comments

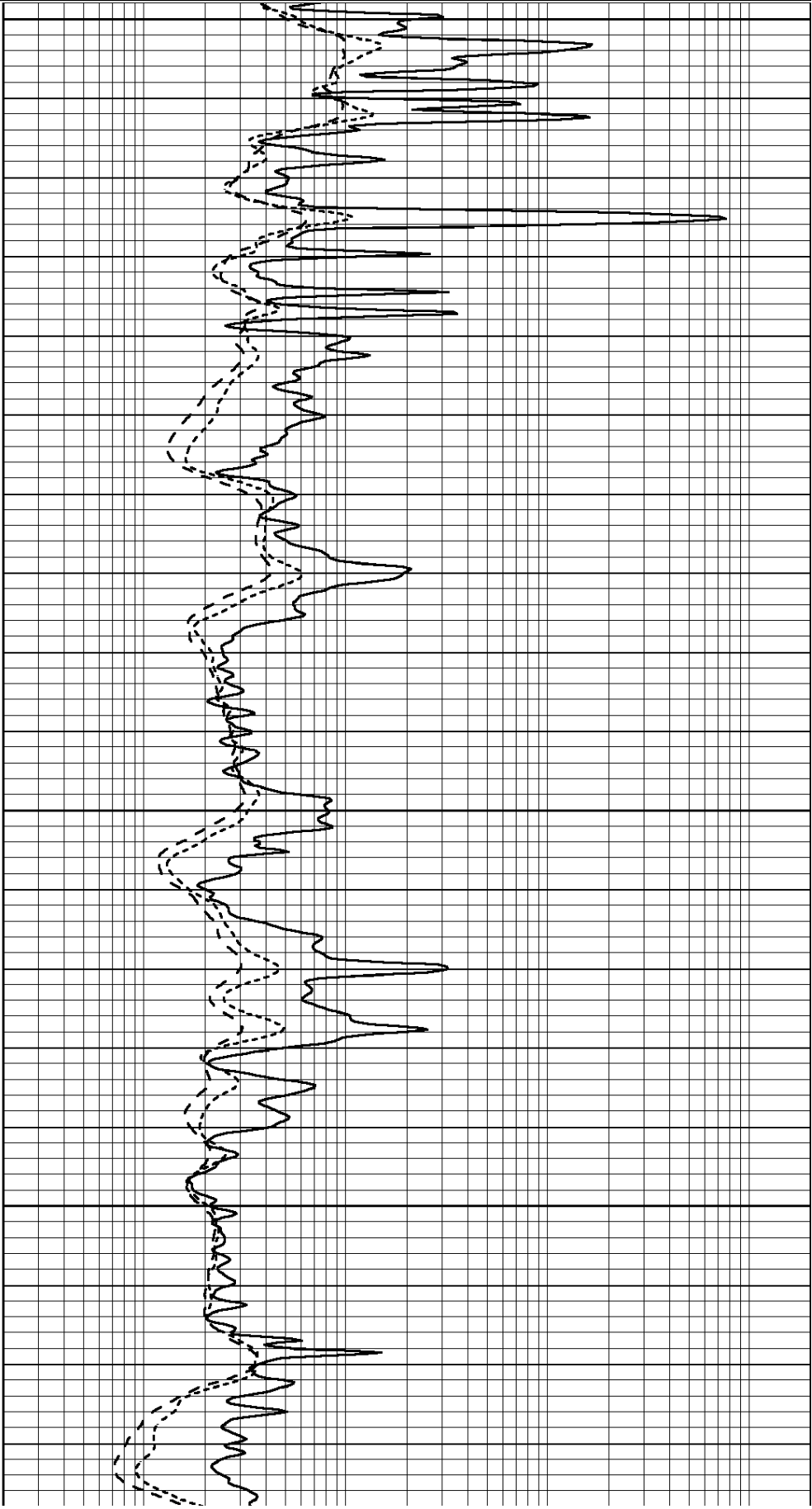
NABORS COMPLETION & PRODUCTION SERVICES CO.
785 (628 - 6395)
THANK YOU FOR YOUR BUSINESS
DIRECTIONS: INTERSECTION OF HWYS 183 & 56 - 2 1/2 MILES NORTH TO RD F
3 MILES WEST - NORTH INTO

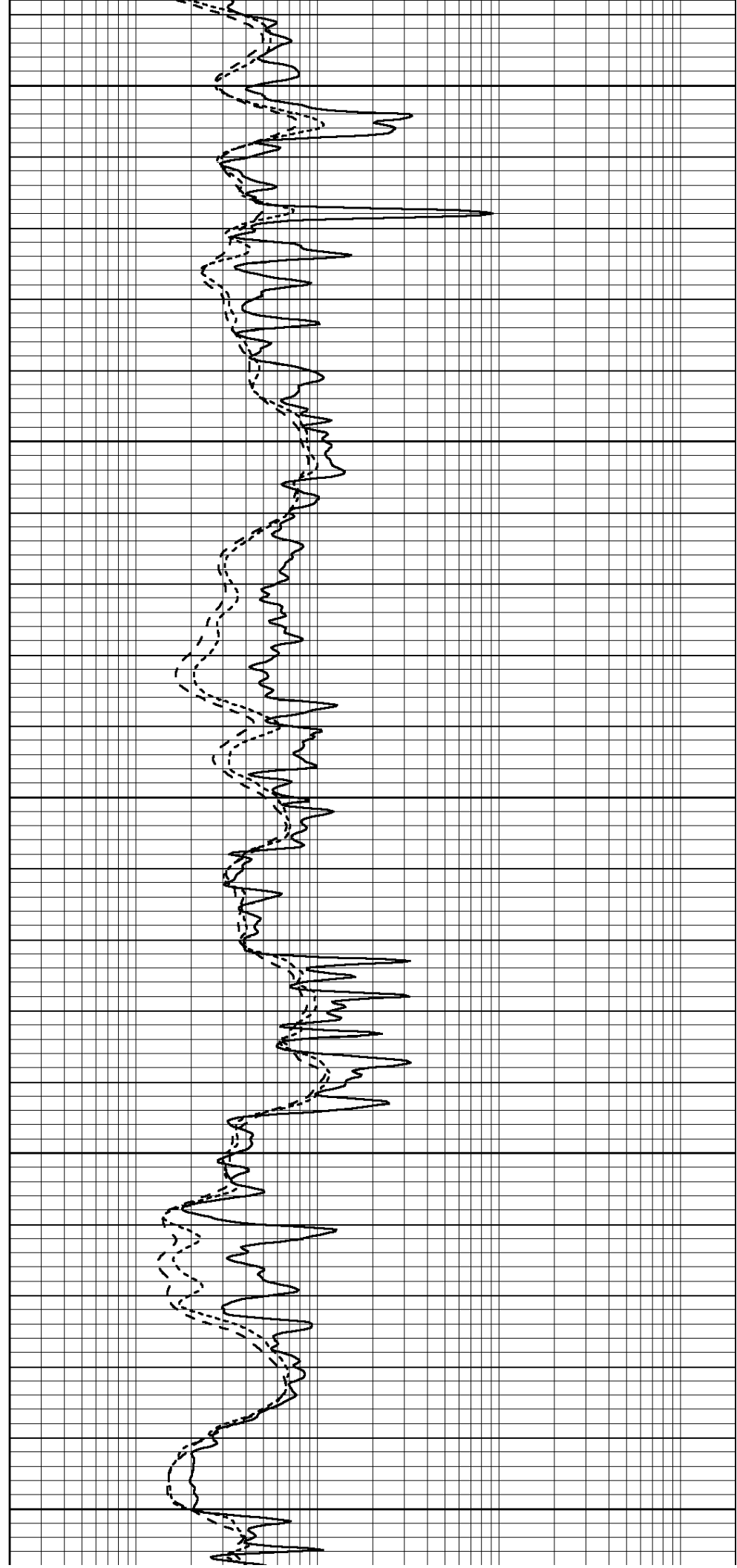
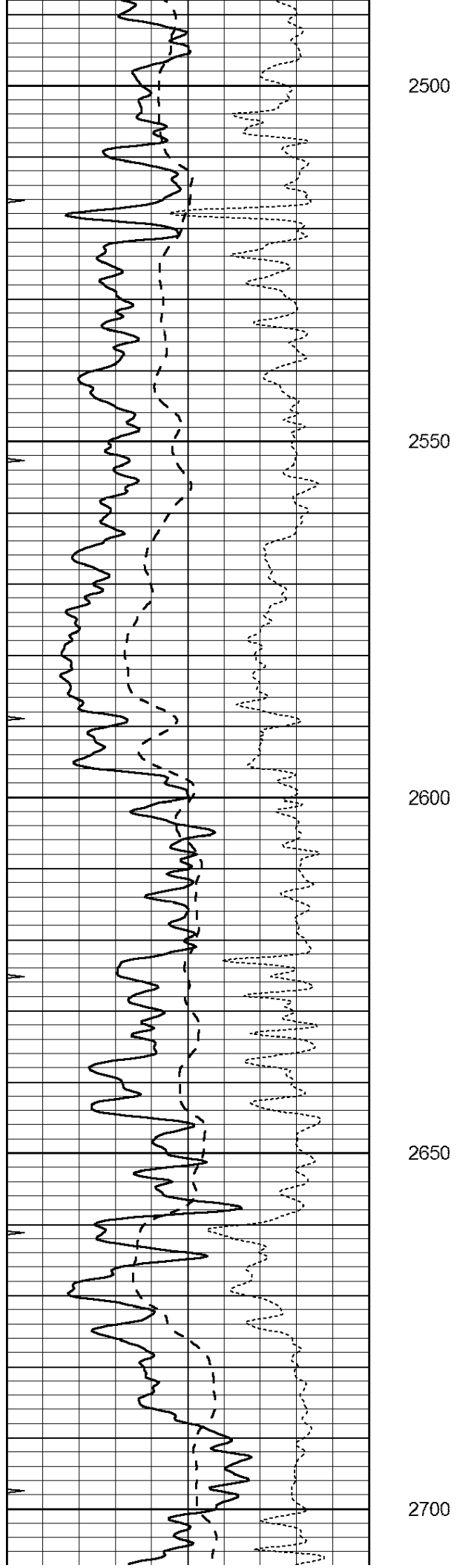
0	GAMMA RAY (GAPI)	150
-100	SP (mV)	100
-250	RxoRt	50
0	MINMK	20

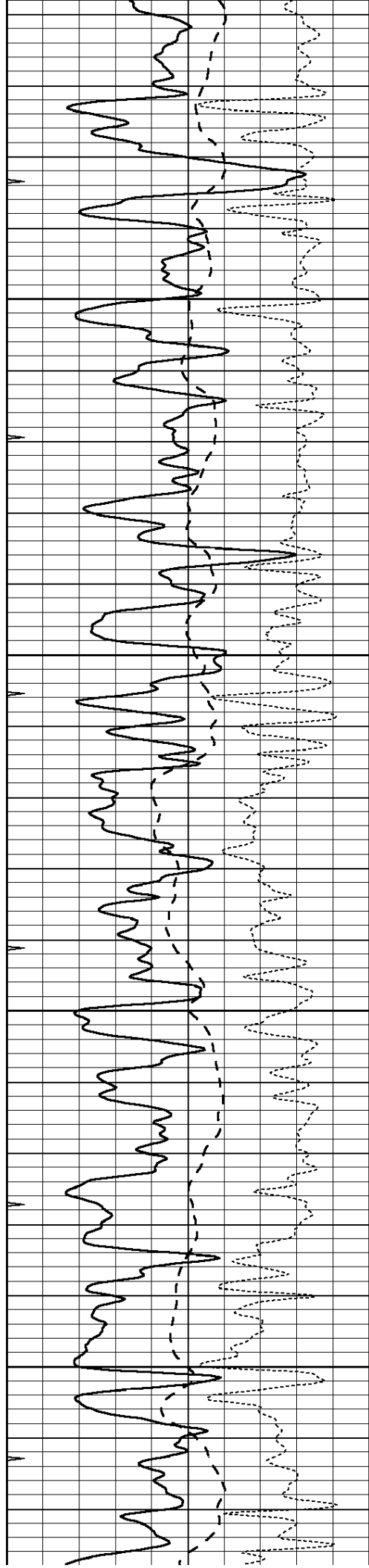
0.2	RLL3 (Ohm-m)	2000
0.2	DEEP INDUCTION (Ohm-m)	2000
0.2	MEDIUM INDUCTION (Ohm-m)	2000



2300
2350
2400
2450





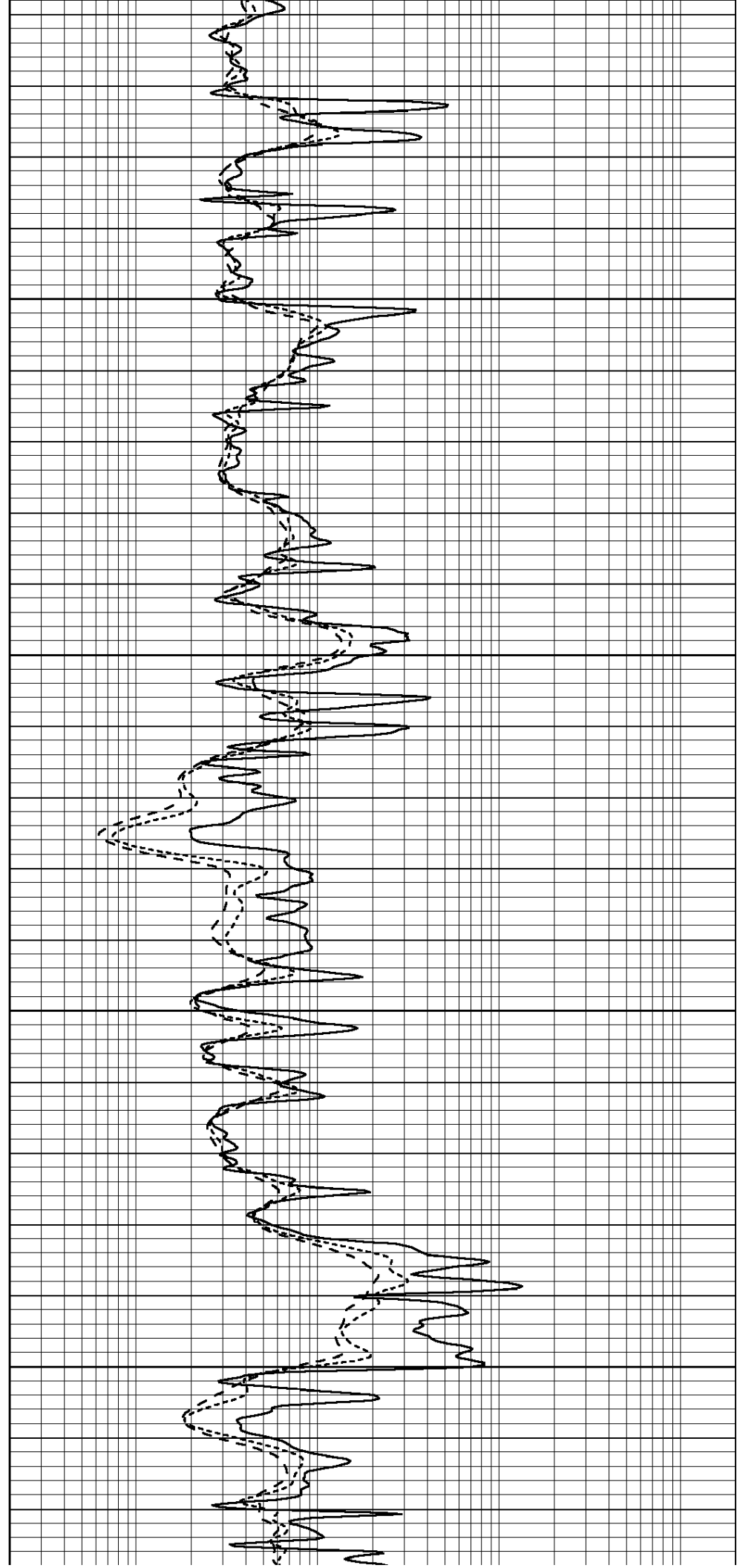


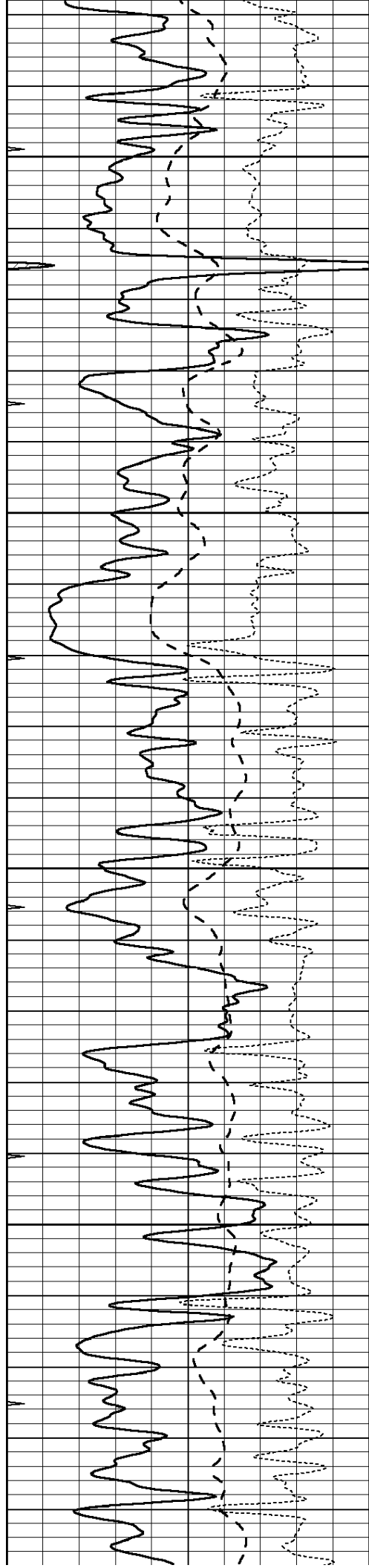
2750

2800

2850

2900



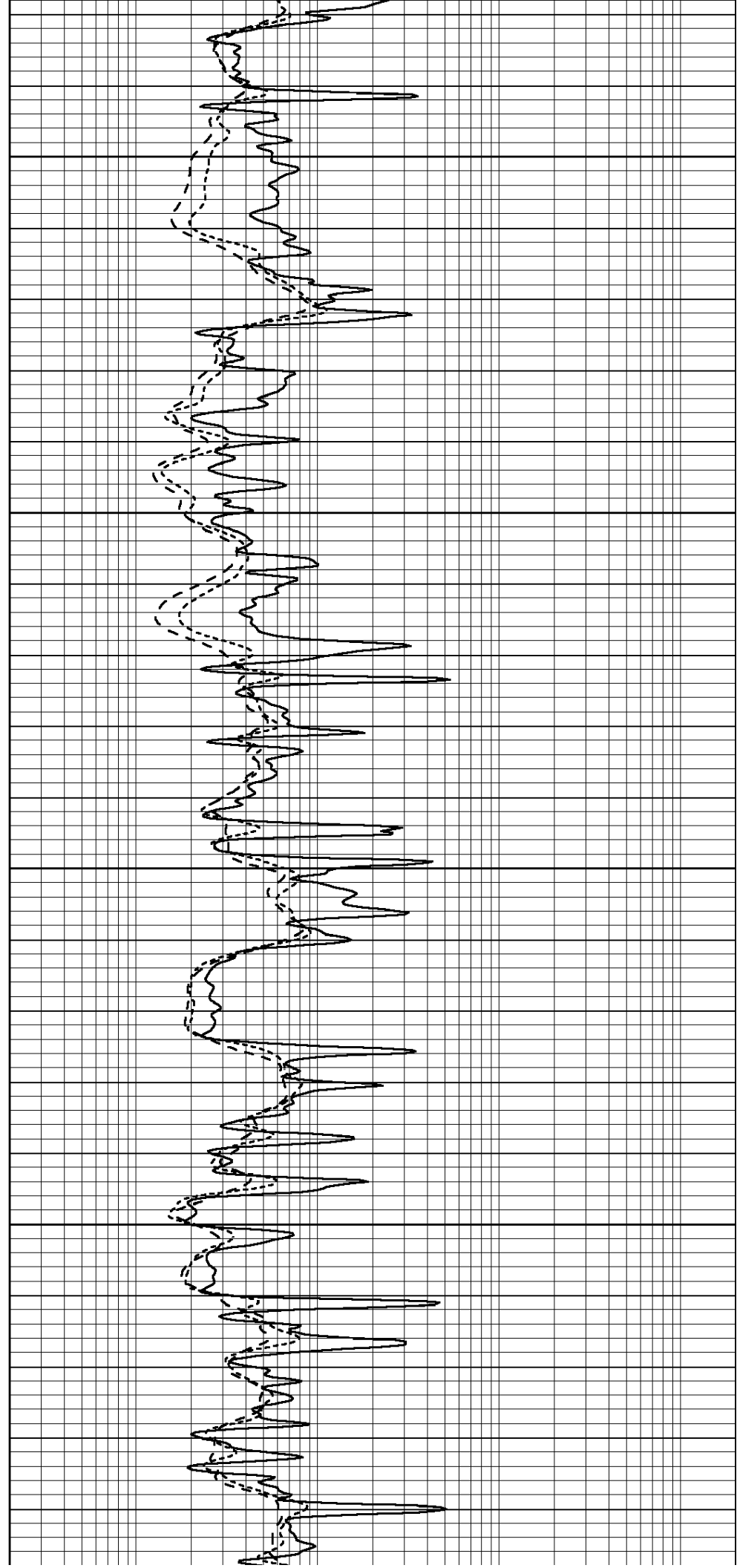


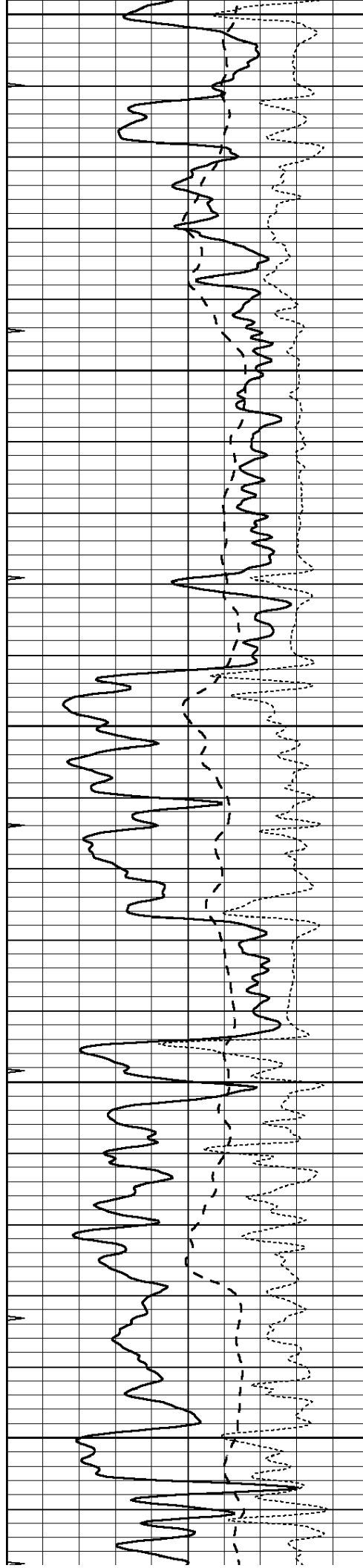
2950

3000

3050

3100





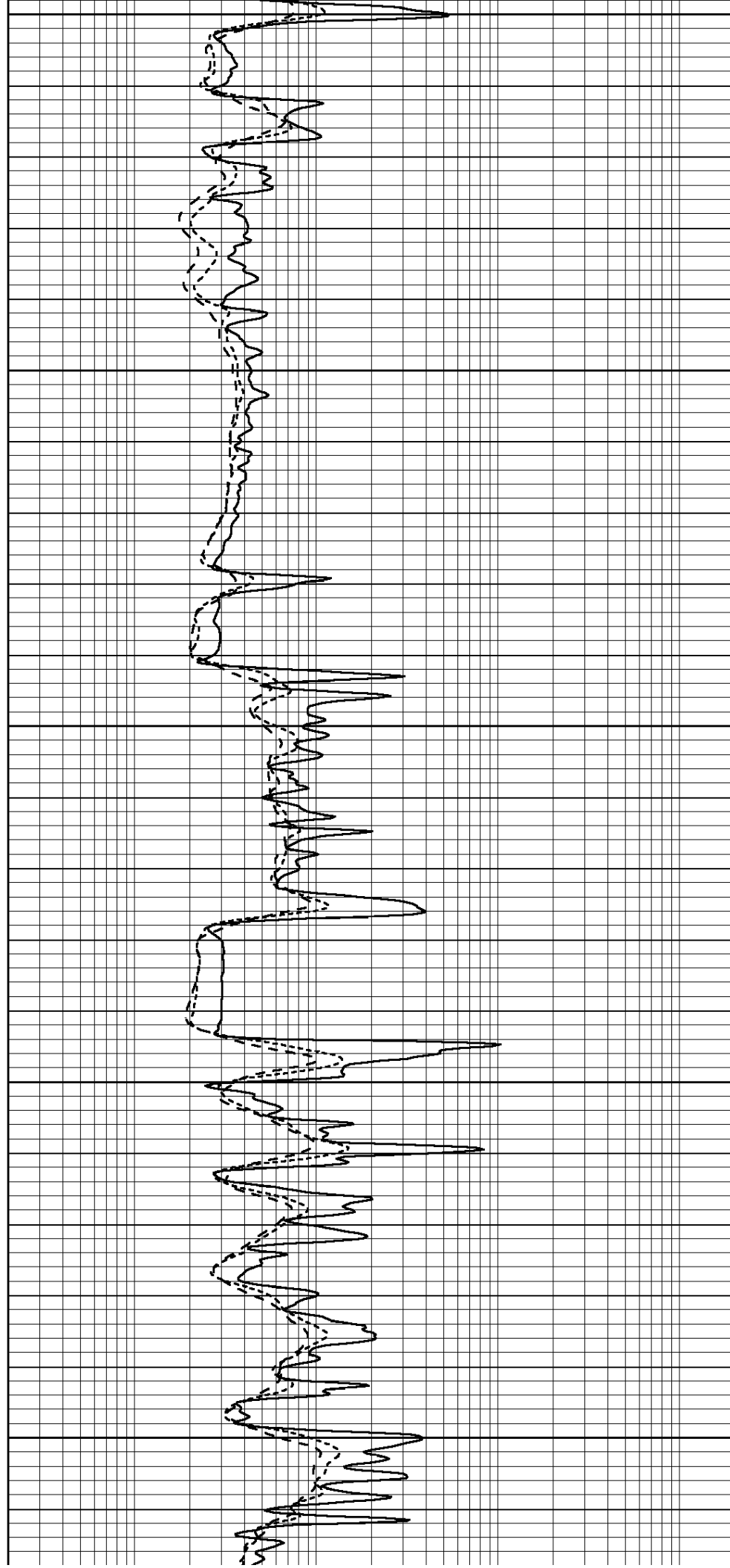
3150

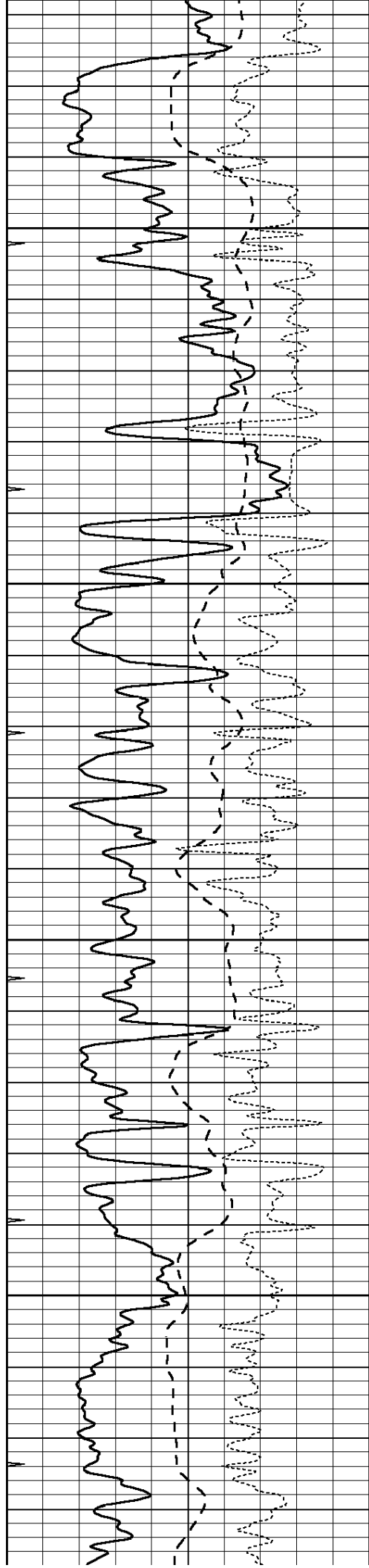
3200

3250

3300

3350



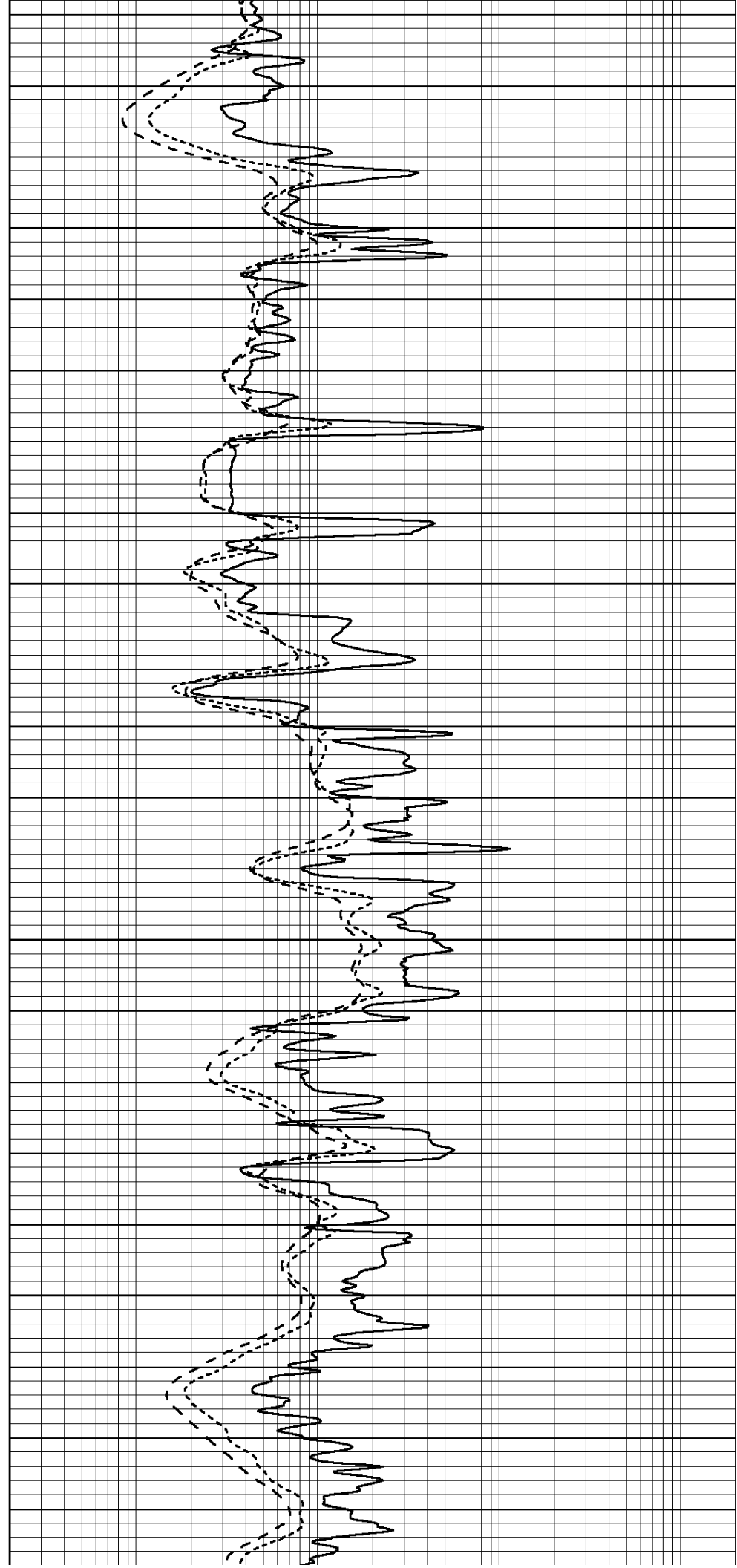


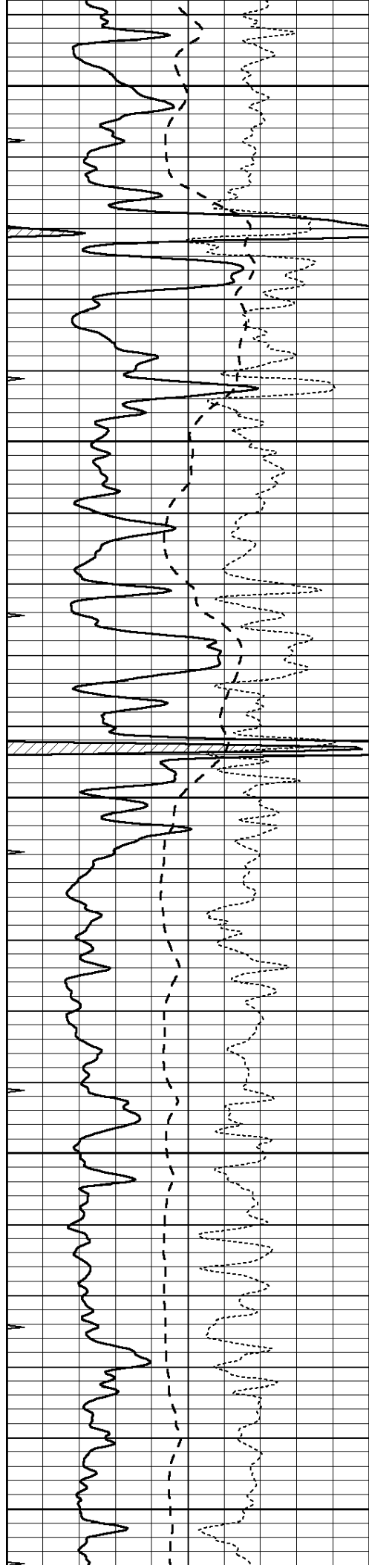
3400

3450

3500

3550





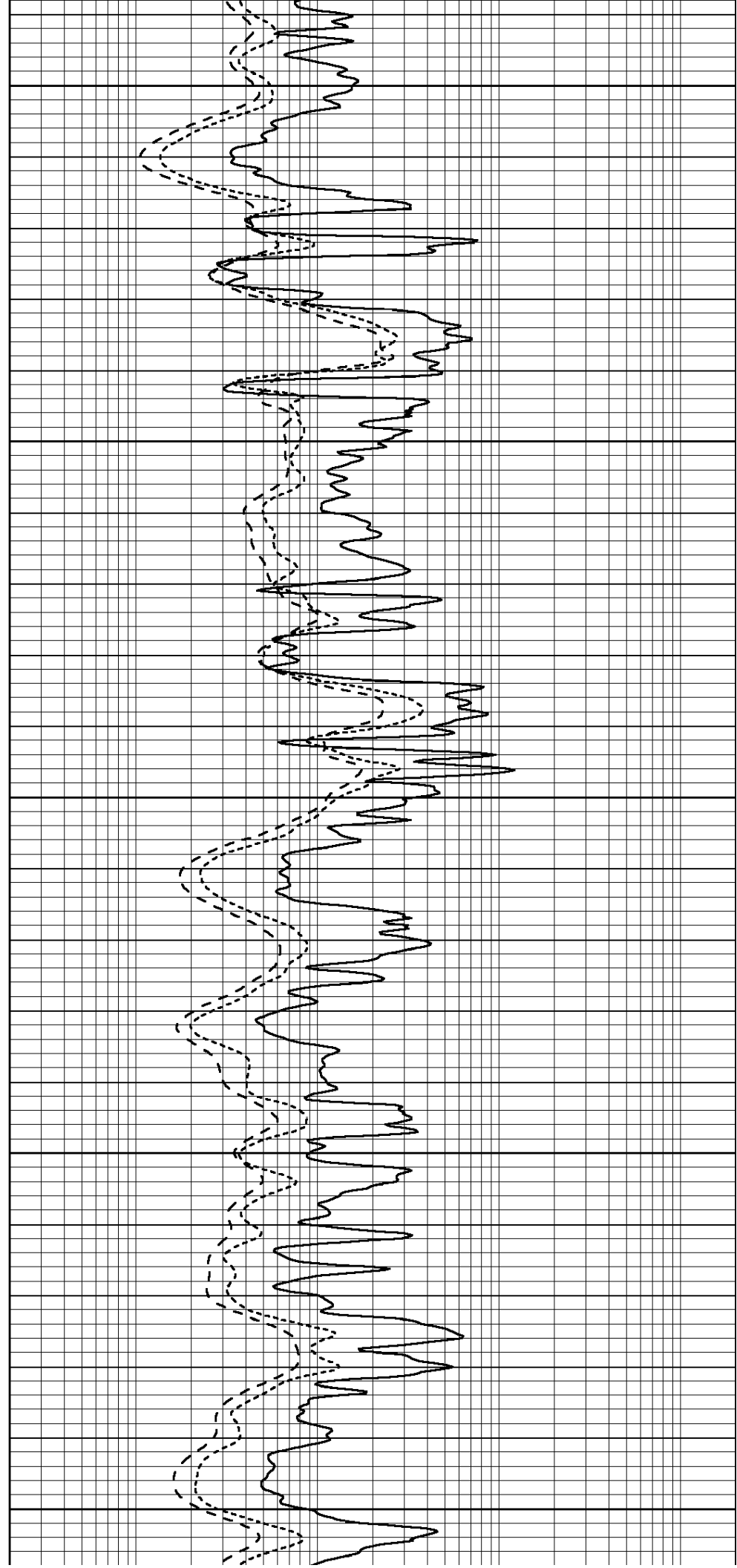
3600

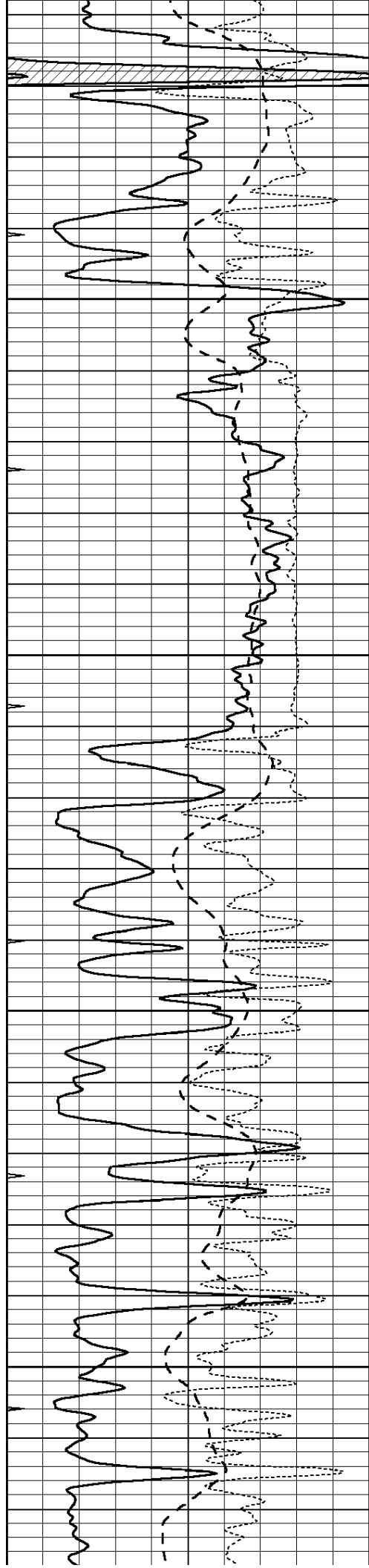
3650

3700

3750

3800



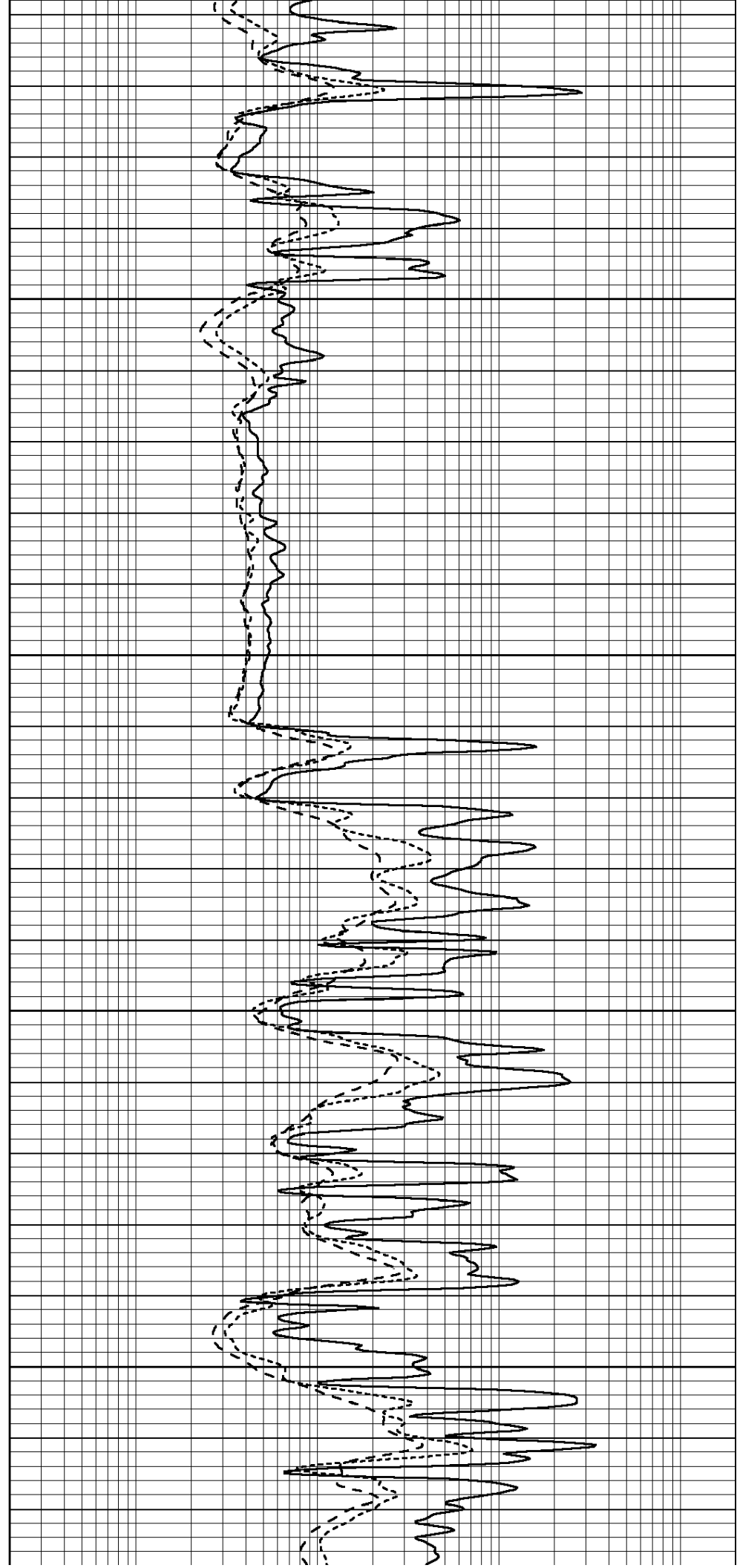


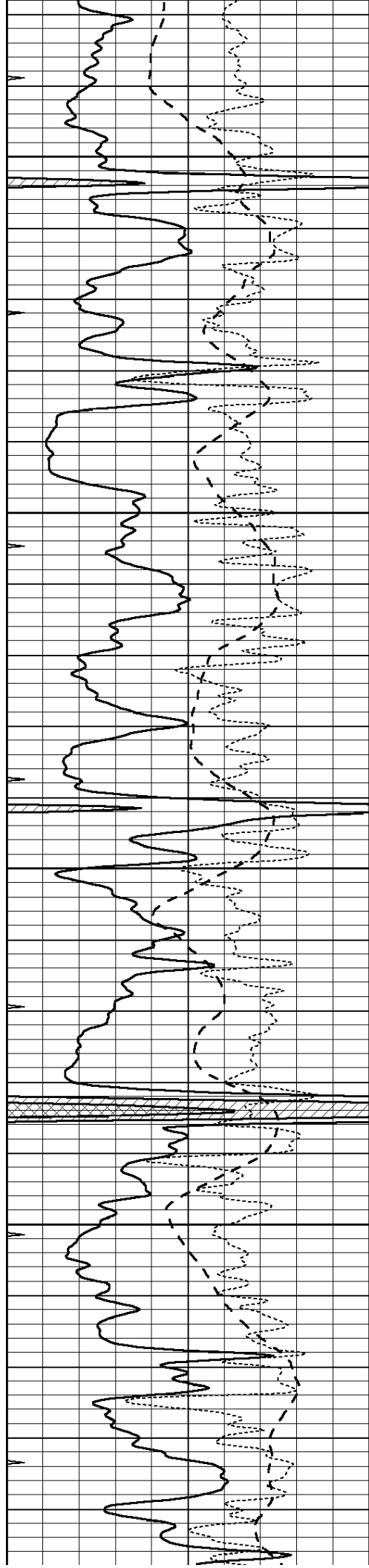
3850

3900

3950

4000



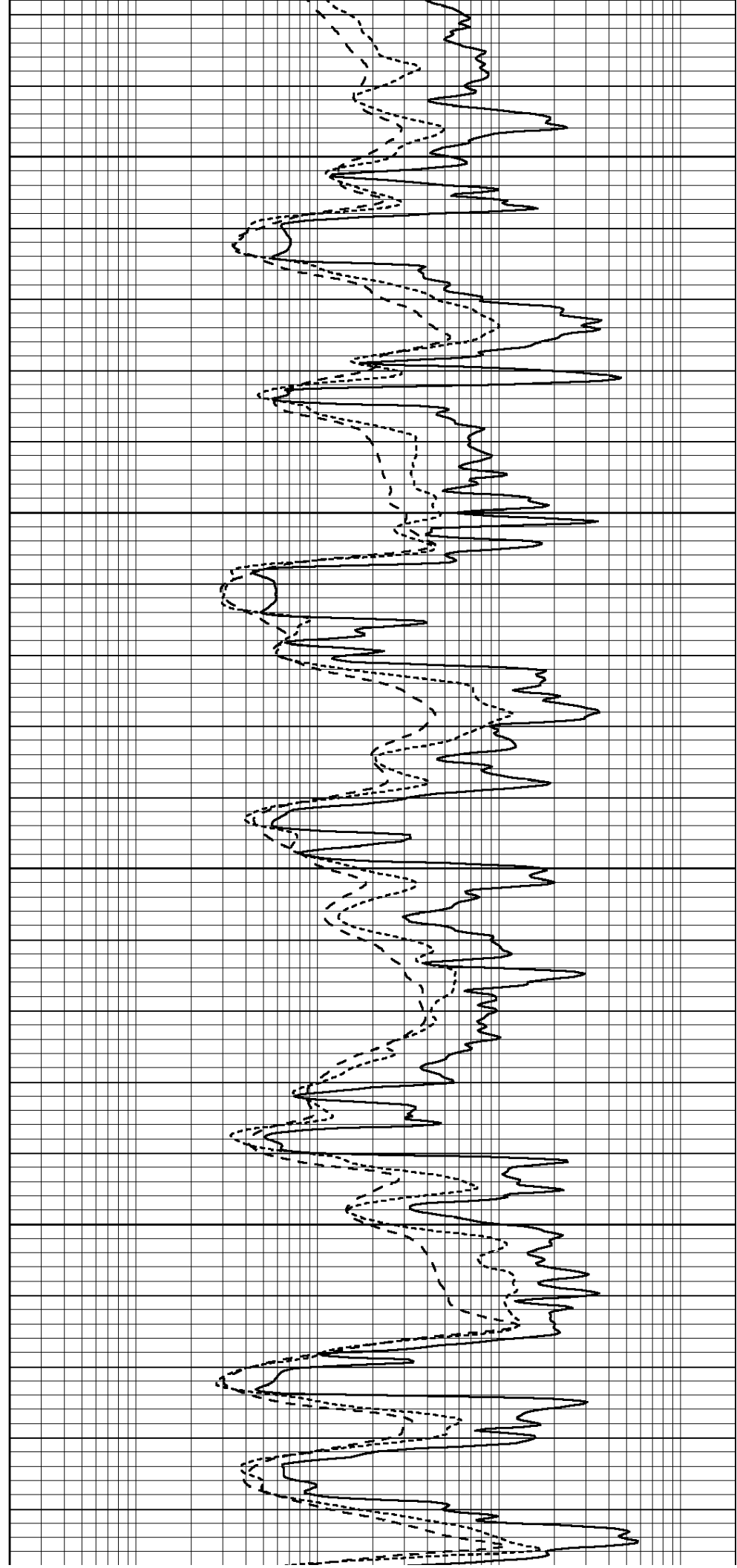


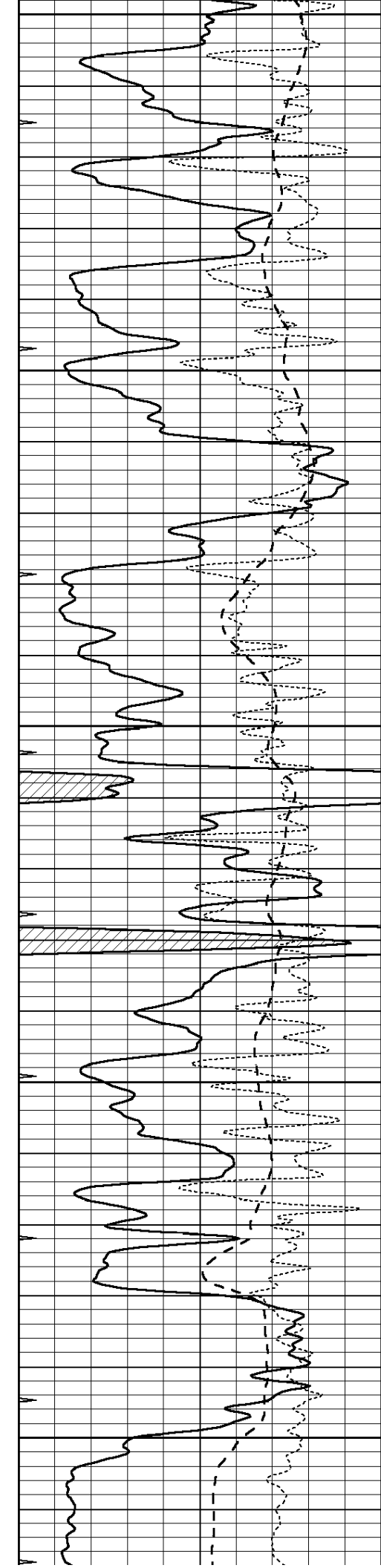
4050

4100

4150

4200





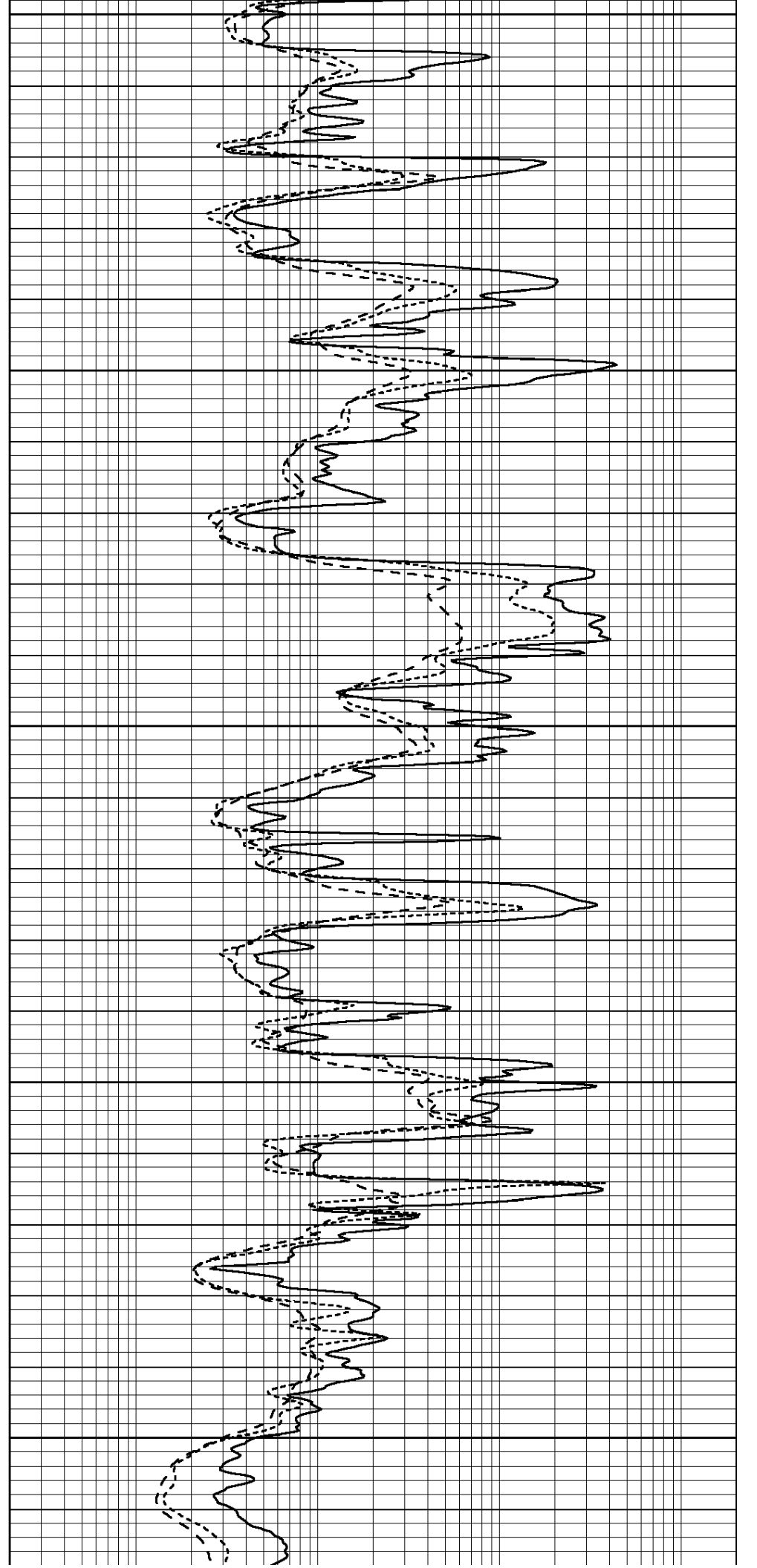
4250

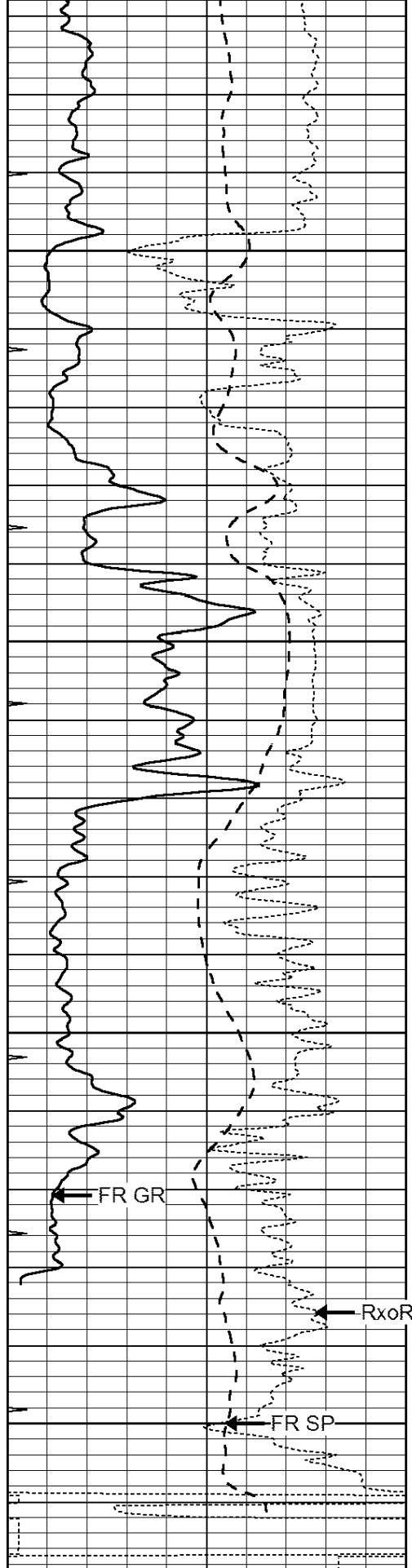
4300

4350

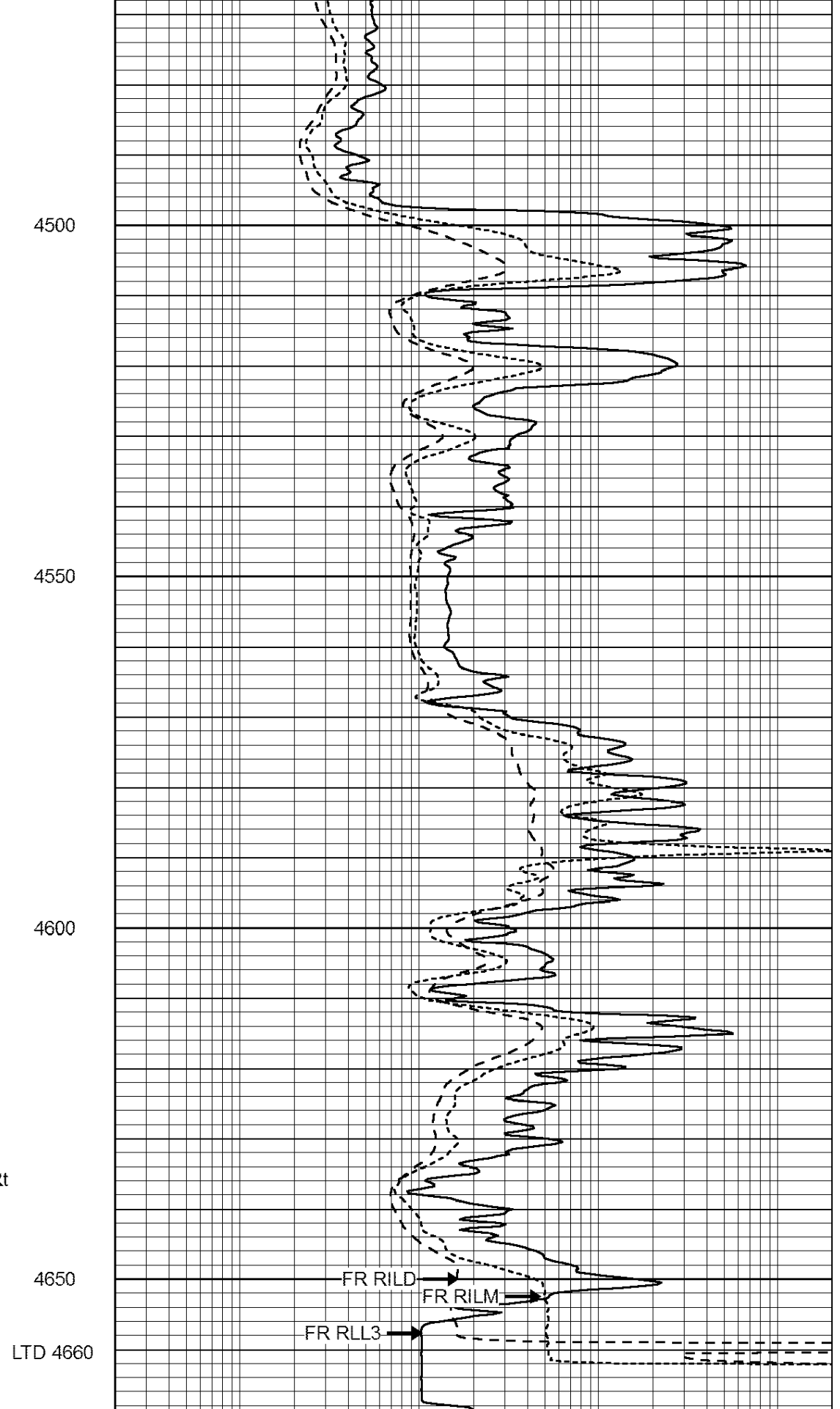
4400

4450





0	GAMMA RAY (GAPI)	150
-100	SP (mV)	100
-250	RxoRt	50
0	MINMK	20



0.2	RLL3 (Ohm-m)	2000
0.2	DEEP INDUCTION (Ohm-m)	2000
0.2	MEDIUM INDUCTION (Ohm-m)	2000

