



**COMPLETION
& PRODUCTION
SERVICES CO.**

**MICRO
LOG**

Company DOWNING NELSON OIL COMPANY
Well KRAMER UNIT #1-24
Field WILDCAT
County CHEYENNE
State KANSAS

Company DOWNING NELSON OIL COMPANY
Well KRAMER UNIT #1-24
Field WILDCAT
County CHEYENNE State KANSAS

Location: API # : 15-023-21394-0000
317' FSL & 1085' FWL
SEC 24 TWP 5S RGE 37W
Permanent Datum GROUND LEVEL Elevation 3276
Log Measured From KELLY BUSHING 13' A.G.L.
Drilling Measured From KELLY BUSHING
Other Services CDL/CNL DIL/SON
Elevation K.B. 3289 D.F. 3287 G.L. 3276

Date	7/18/14		
Run Number	TWO		
Depth Driller	5129		
Depth Logger	5134		
Bottom Logged Interval	5116		
Top Log Interval	450		
Casing Driller	8 5/8" @ 480		
Casing Logger	476		
Bit Size	7 7/8"		
Type Fluid in Hole	CHEMICAL MUD	CHLORIDES 500 PPM	
Density / Viscosity	9.3/49		
pH / Fluid Loss	10.5/8.0		
Source of Sample	FLOWLINE		
Rm @ Meas. Temp	1.20 @ 88F		
Rmt @ Meas. Temp	.90 @ 88F		
Rmc @ Meas. Temp	1.44 @ 88F		
Source of Rmf / Rmc	MEASUREMENT		
Rm @ BHT	.83 @ 126F		
Time Circulation Stopped	2 HOURS		
Time Logger on Bottom			
Maximum Recorded Temperature	126F		
Equipment Number	4010		
Location	HAYS, KANSAS		
Recorded By	JASON CAPPELLUCCI		
Witnessed By	RON NELSON		

<<< Fold Here >>>

All interpretations are opinions based on inferences from electrical or other measurements and we cannot and do not guarantee the accuracy or correctness of any interpretation, and we shall not, except in the case of gross or willful negligence on our part, be liable or responsible for any loss, costs, damages, or expenses incurred or sustained by anyone resulting from any interpretation made by any of our officers, agents or employees. These interpretations are also subject to our general terms and conditions set out in our current Price Schedule.

Comments

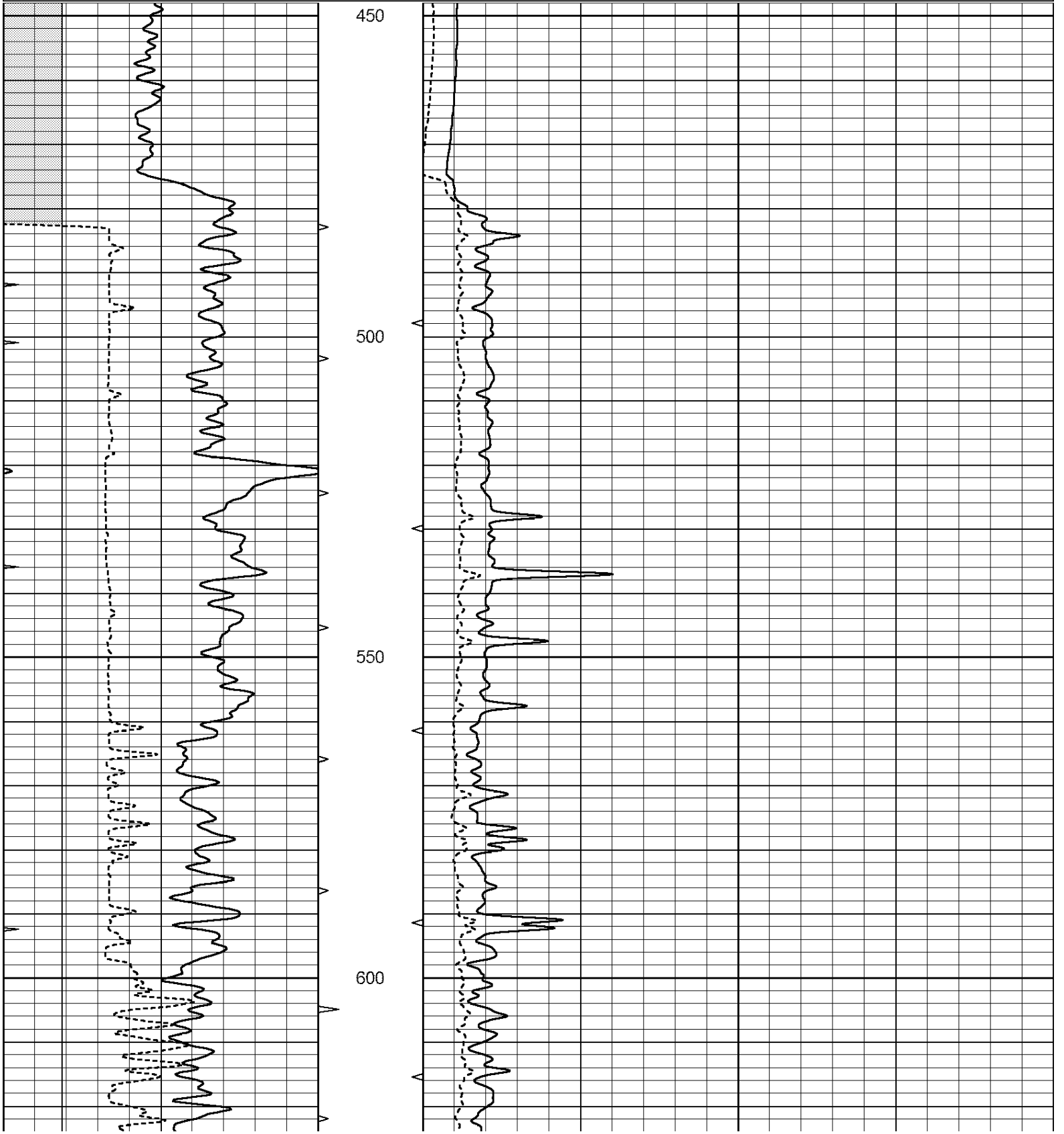
THANK YOU FOR USING NABORS, HAYS, KS. (785) 628-6395
DIRECTIONS:
BREWSTER, KS. - 17 NORTH TO CURVE - 3 WEST - 2 NORTH - 1/4 EAST
SOUTH INTO

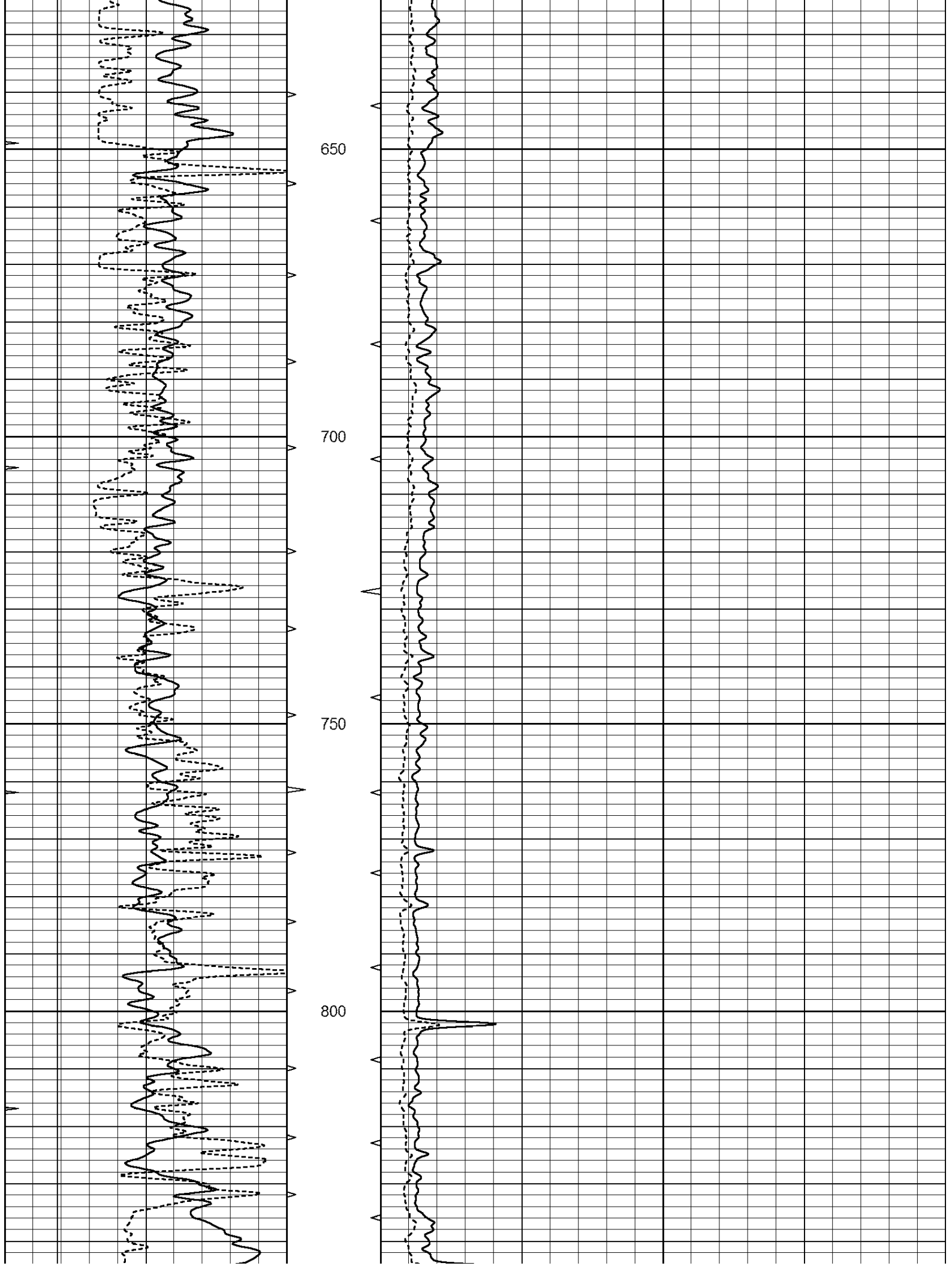


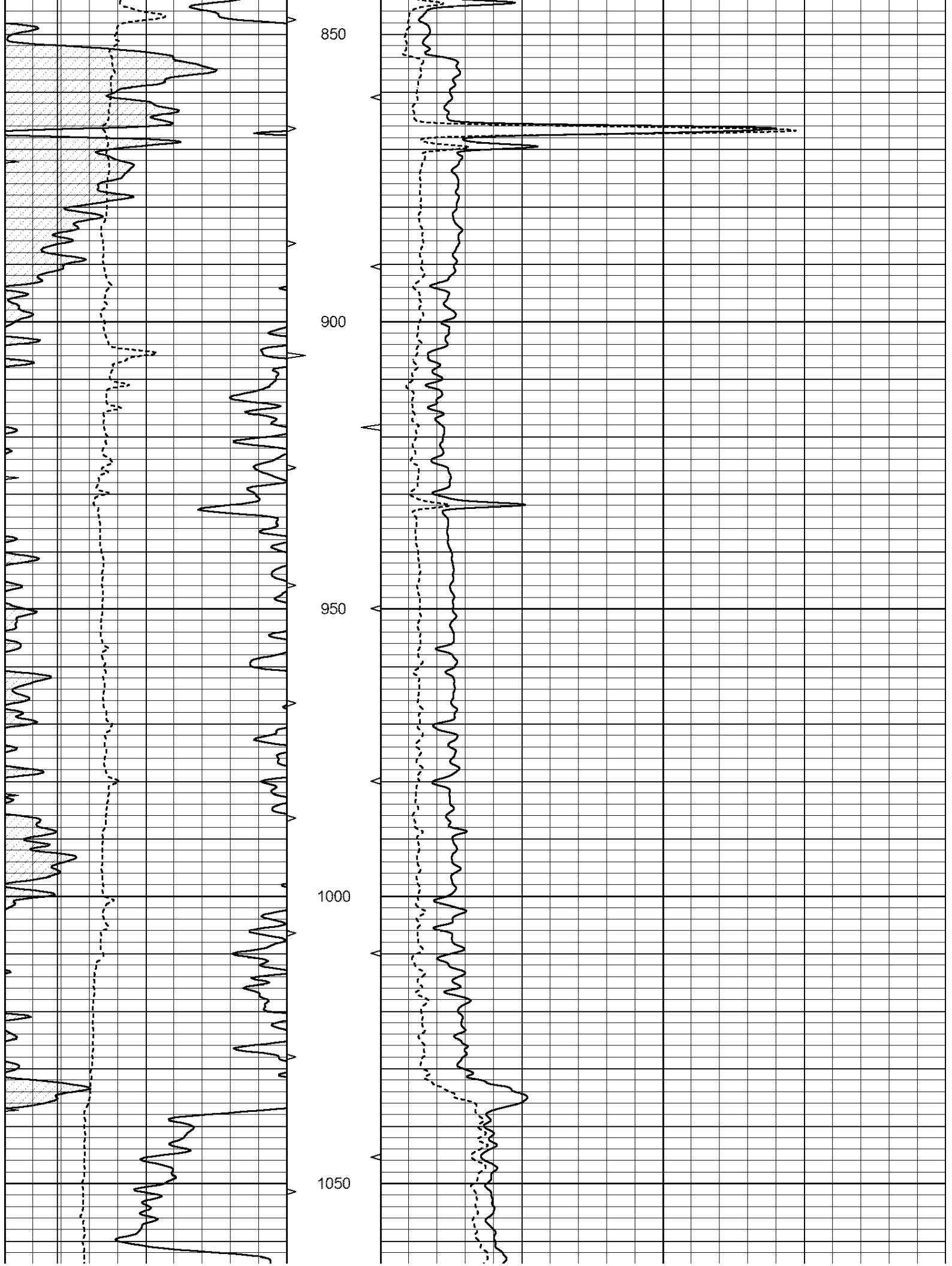
MAIN SECTION

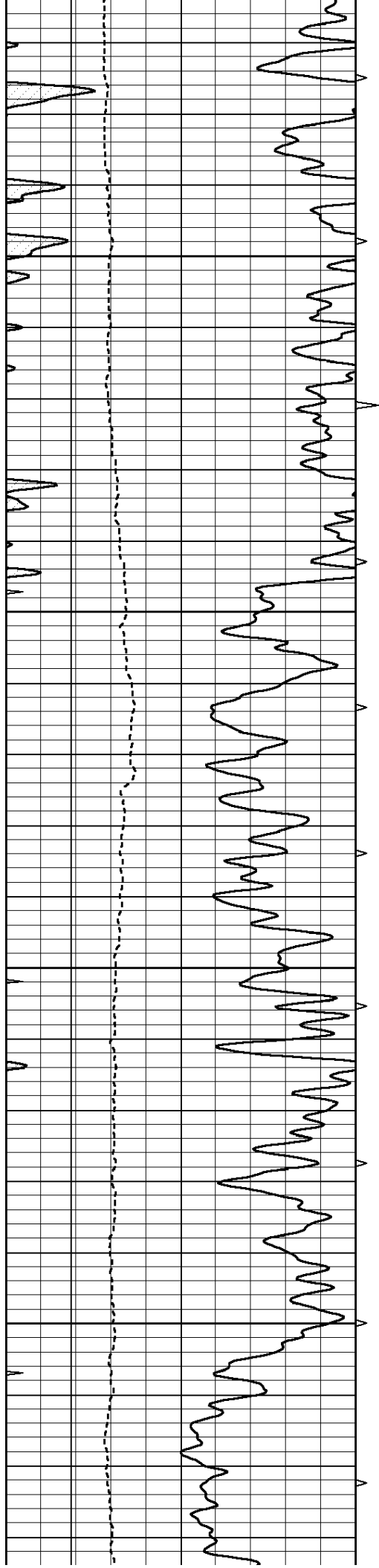
Database File: 24064ddn.db
 Dataset Pathname: pass6.1
 Presentation Format: _micro
 Dataset Creation: Fri Jul 18 16:06:26 2014
 Charted by: Depth in Feet scaled 1:240

0	GAMMA RAY (GAPI)	150	ABHV	0	MEL1.5 (Ohm-m)	40
6	CALIPER (in)	16	10 (ft3)	0	MEL2.0 (Ohm-m)	40
0	MINMK	20	TBHV			
			0 (ft3)	10		







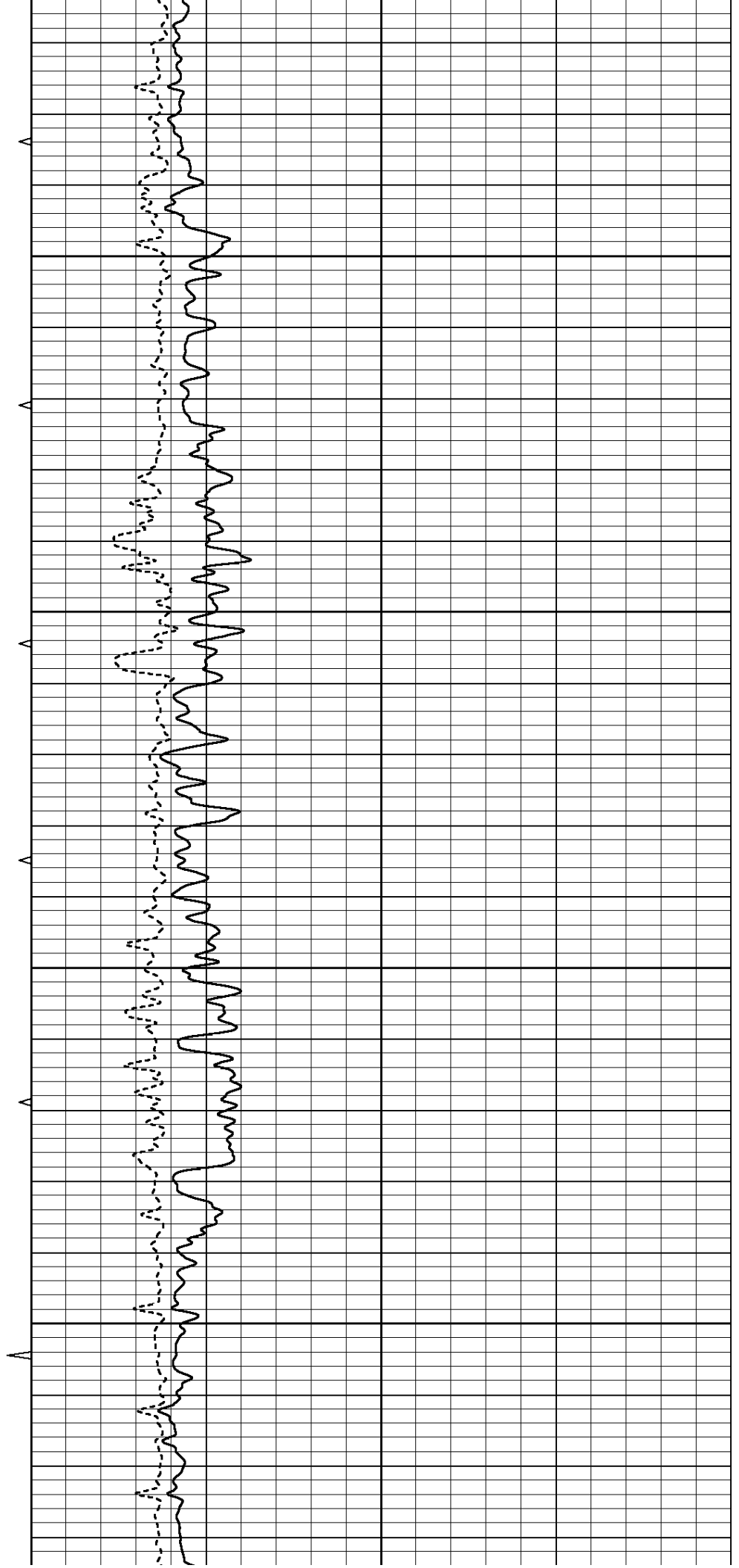


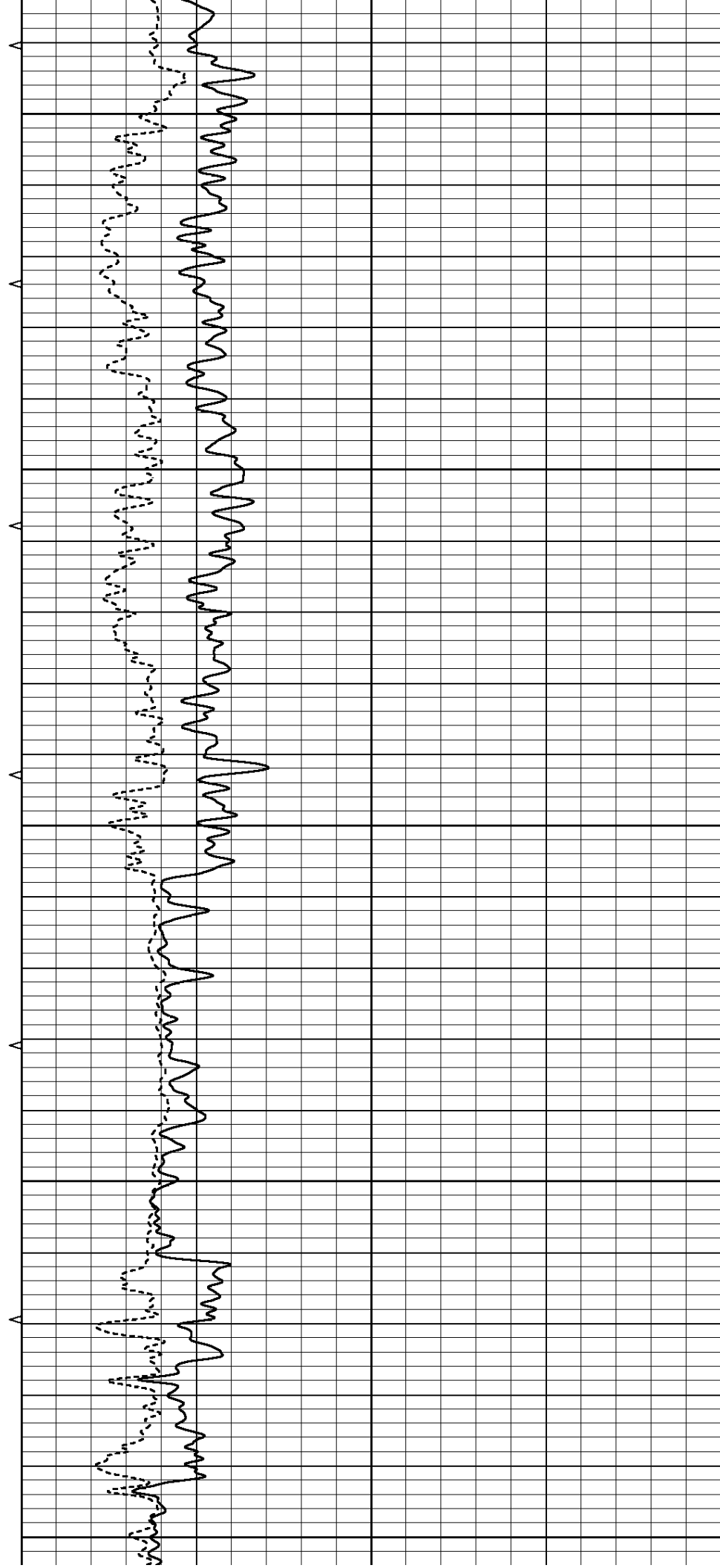
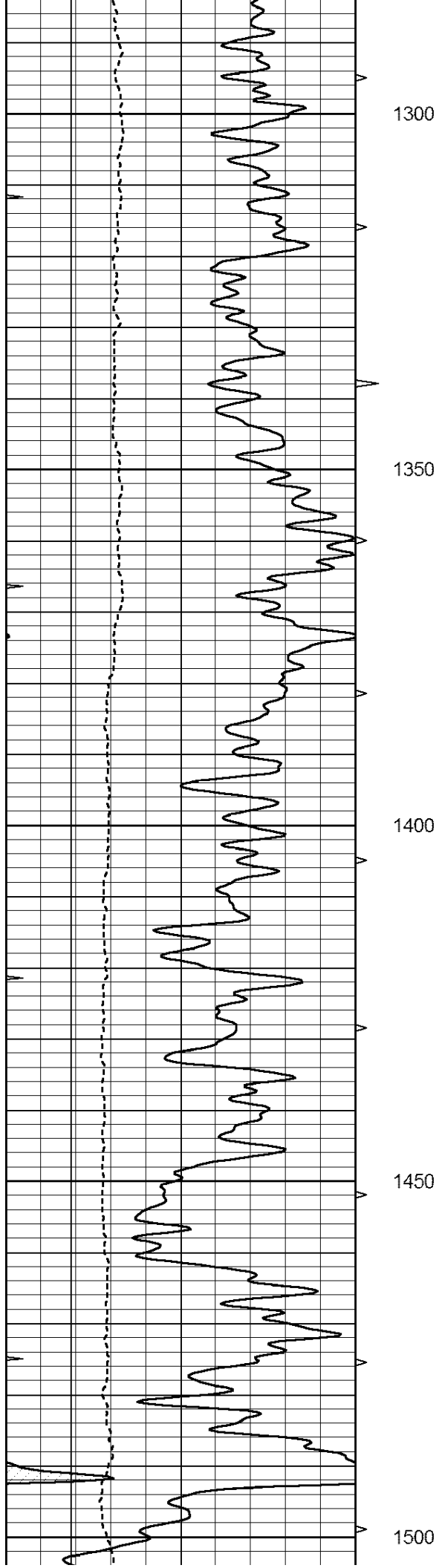
1100

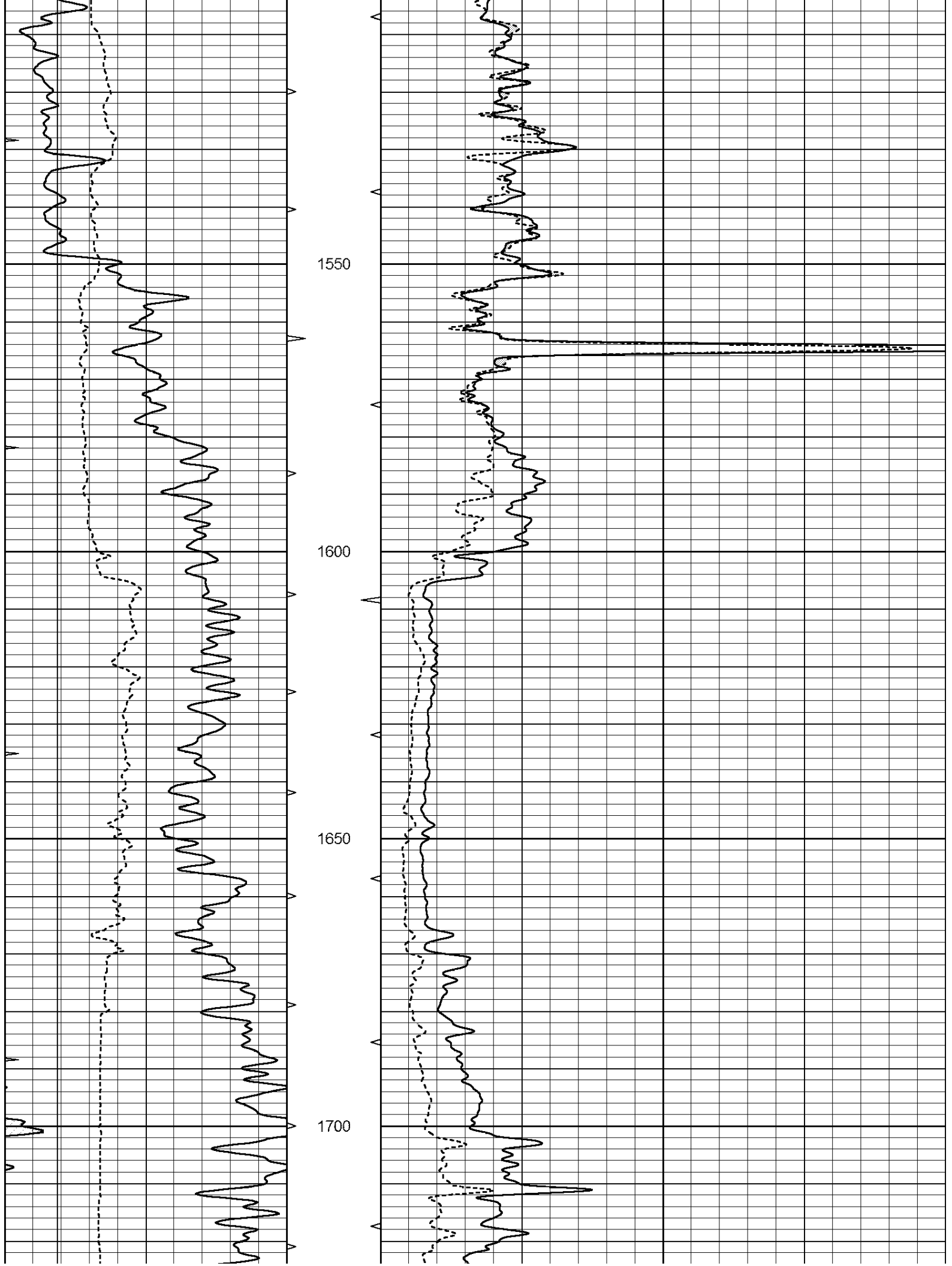
1150

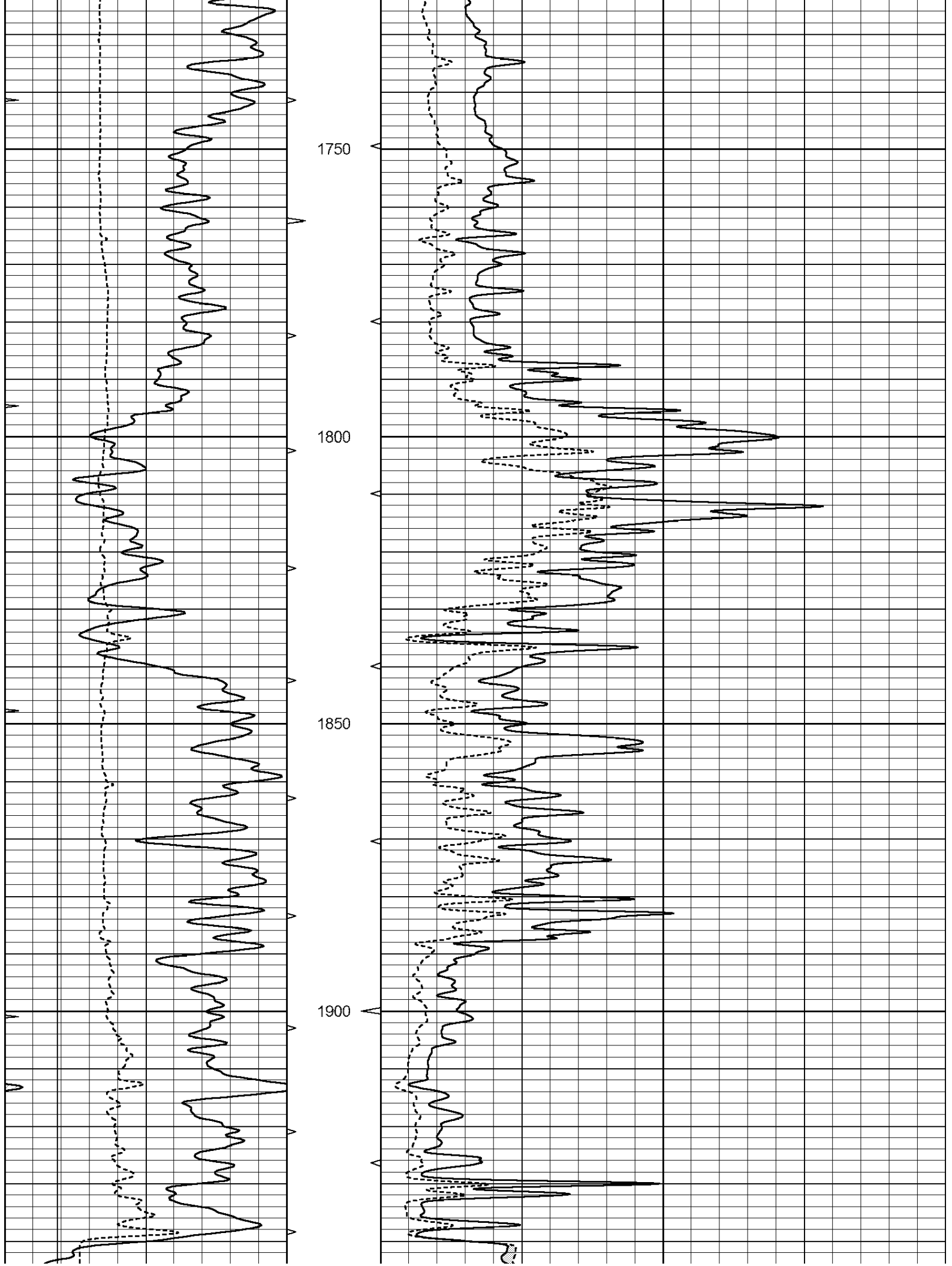
1200

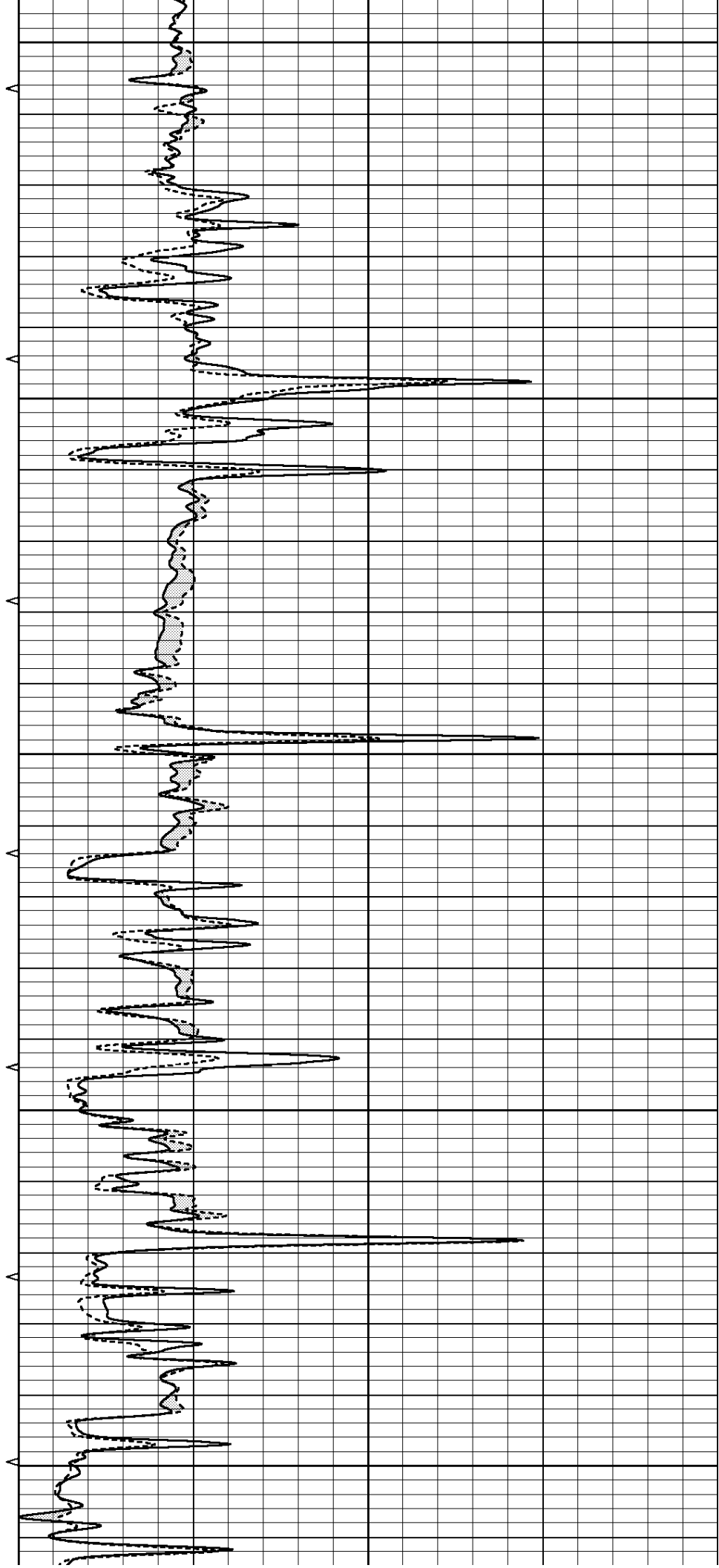
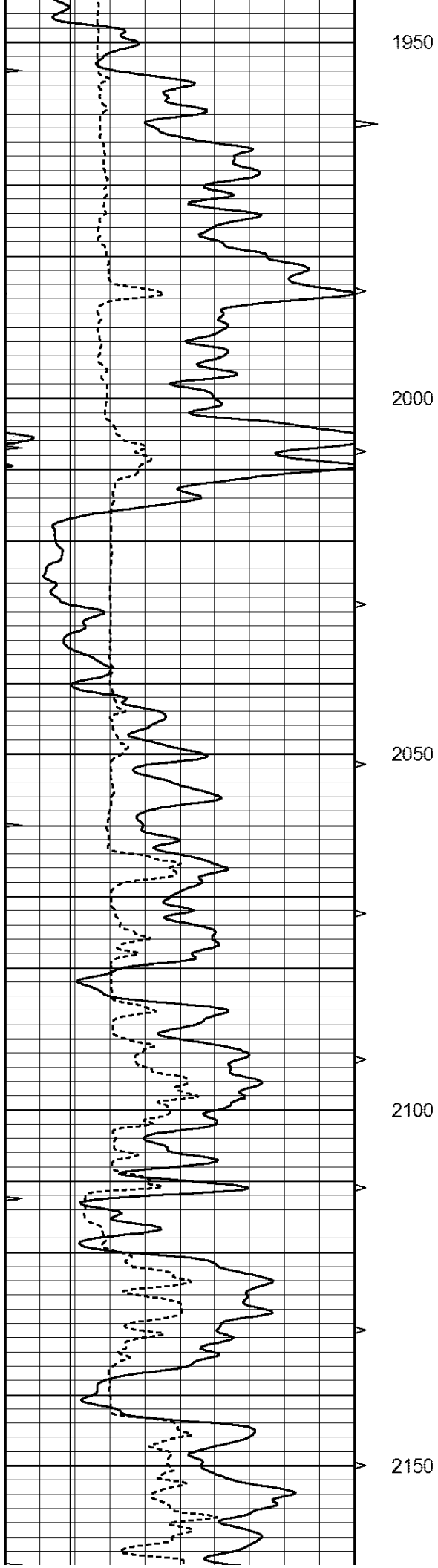
1250

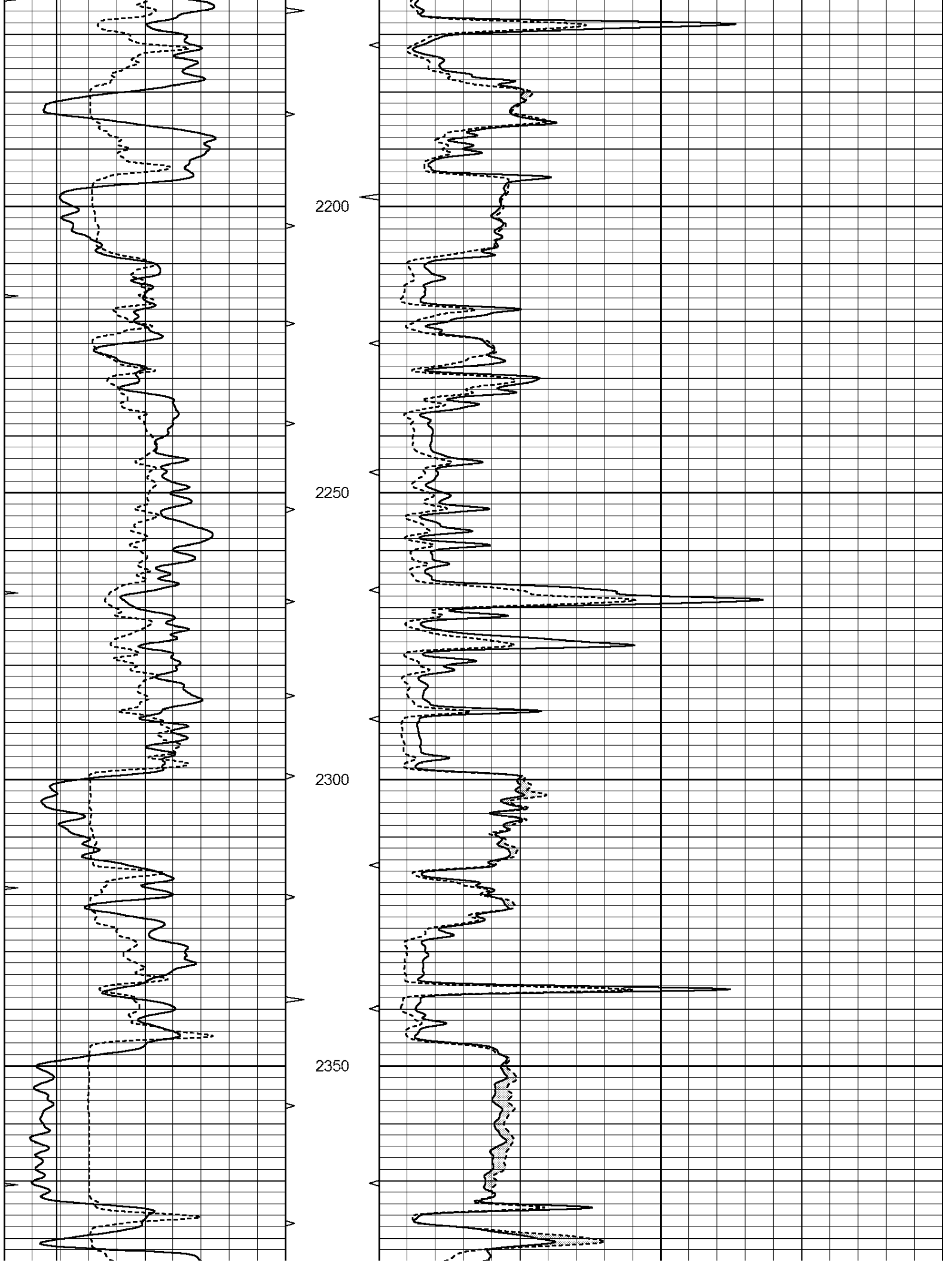


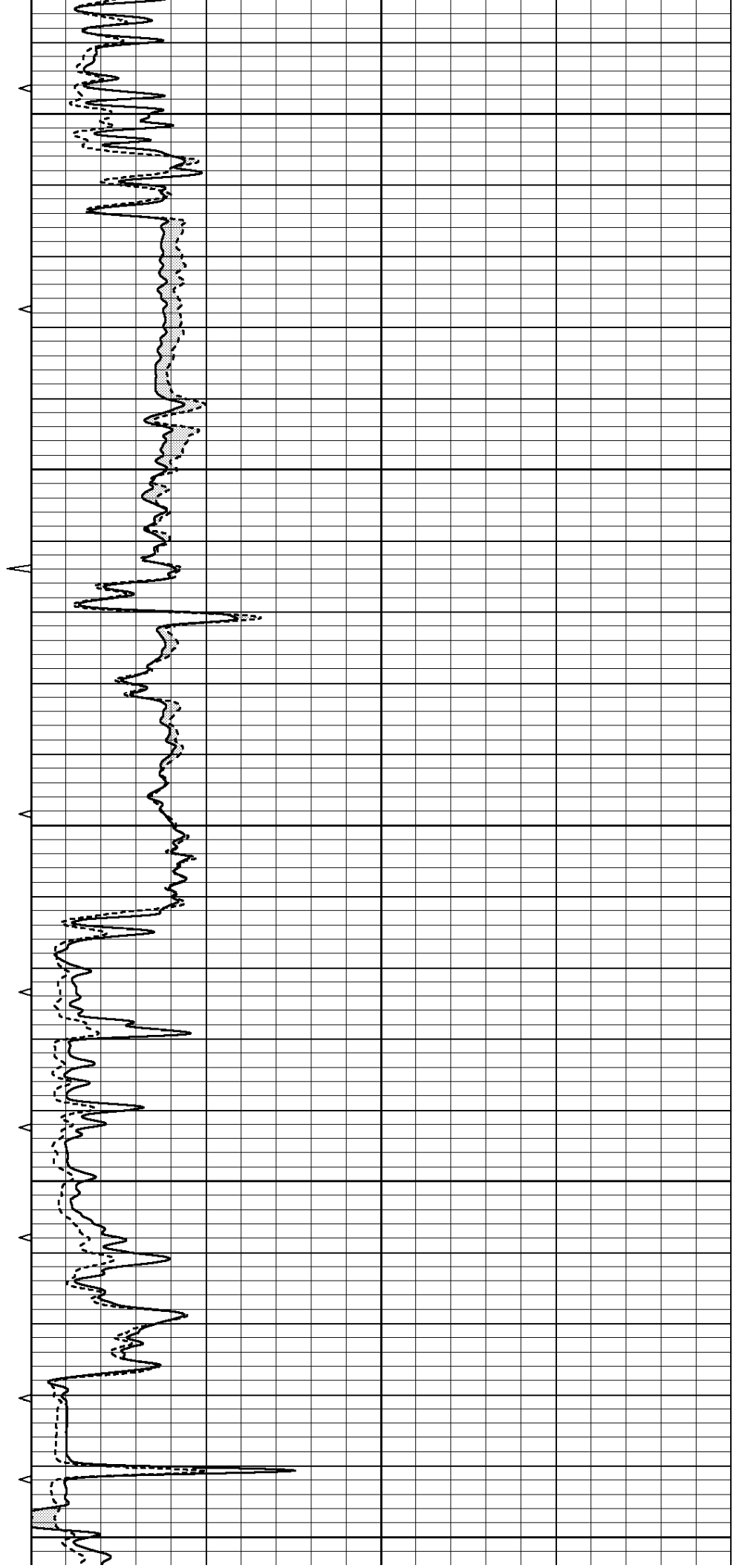
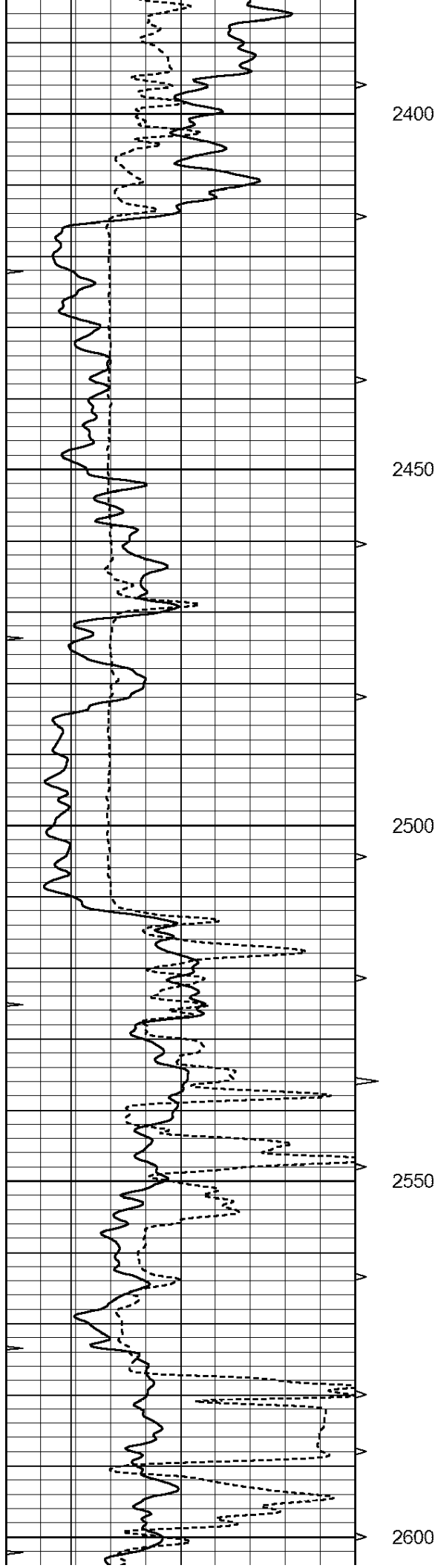


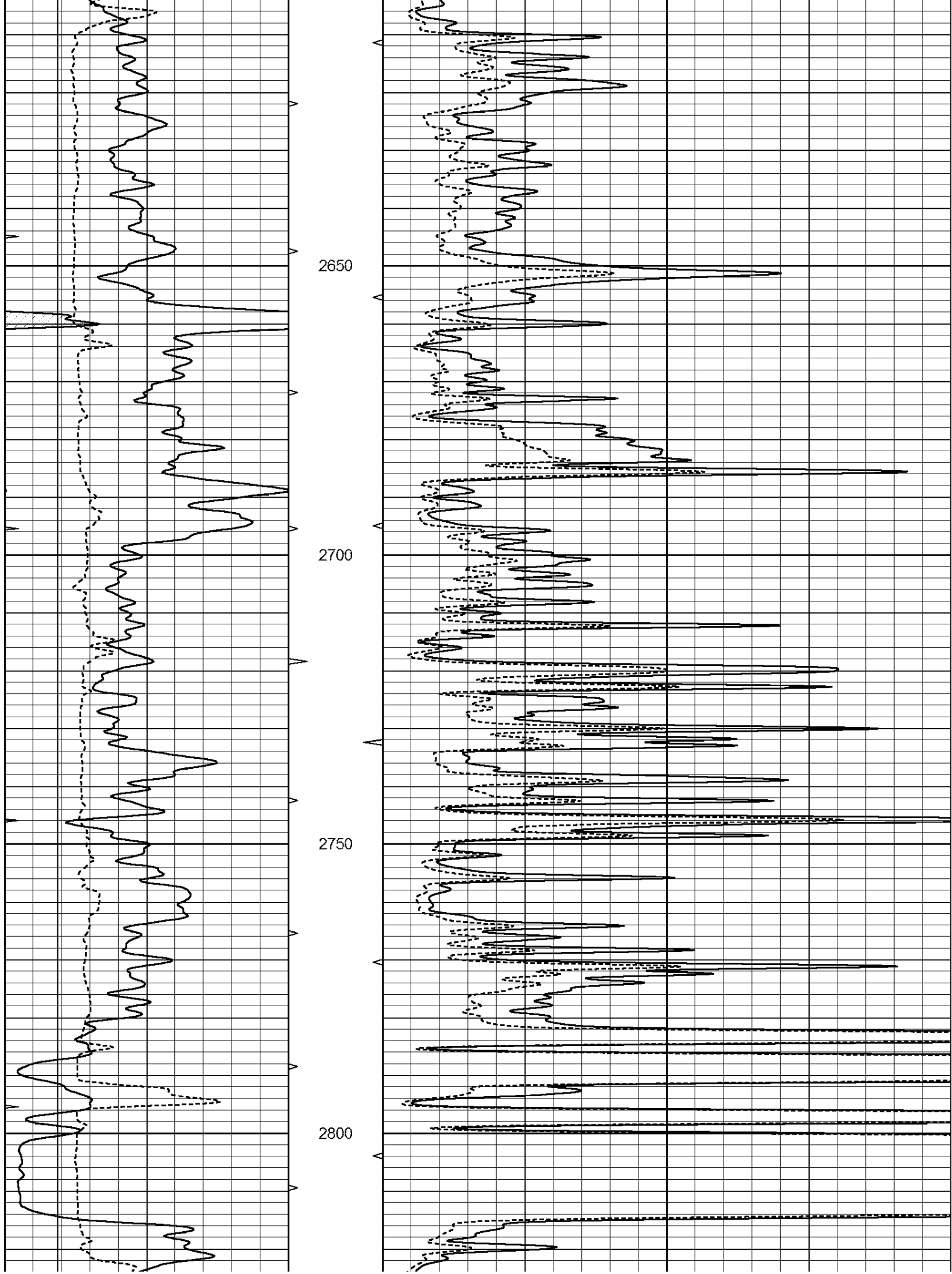


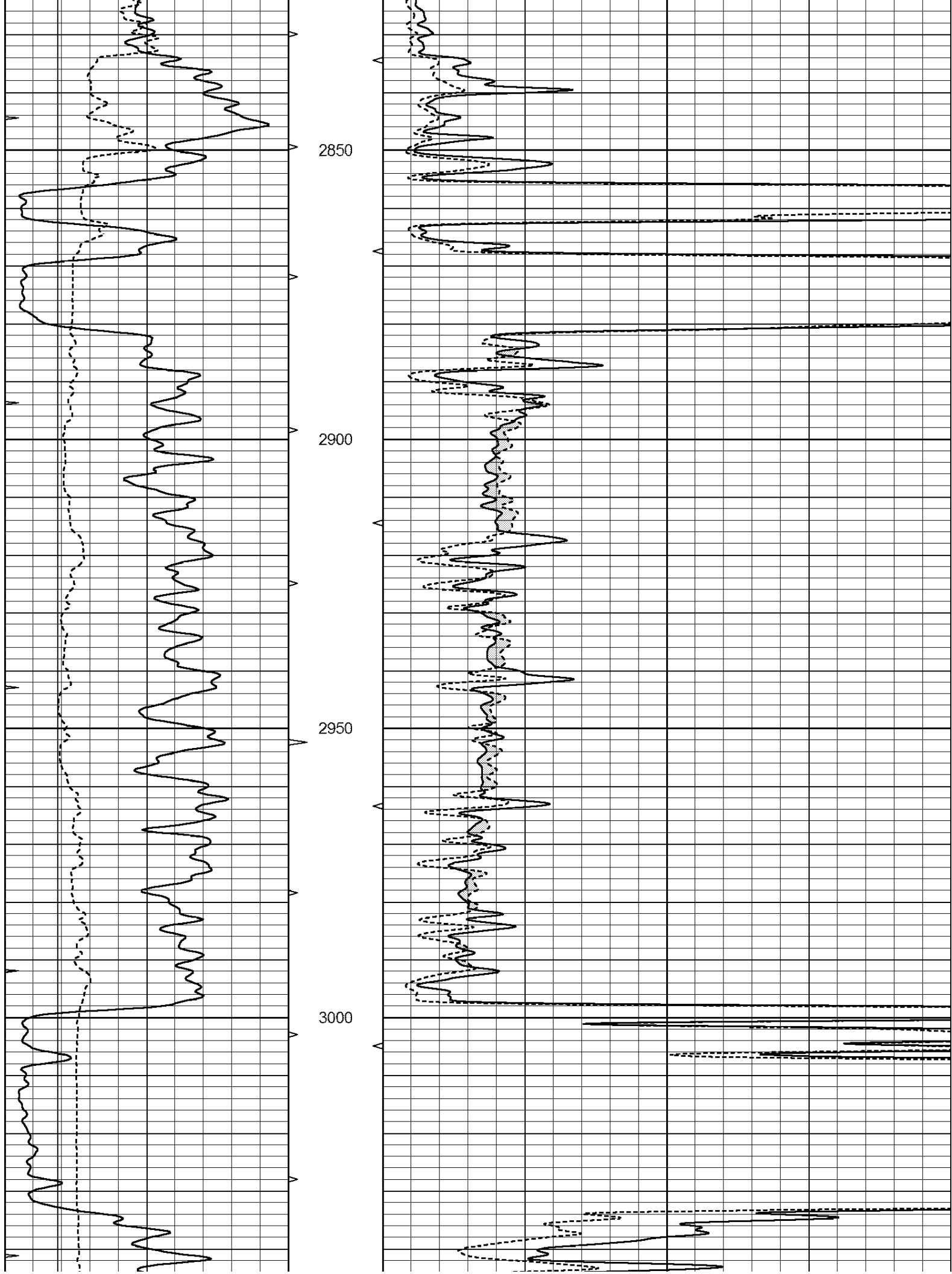


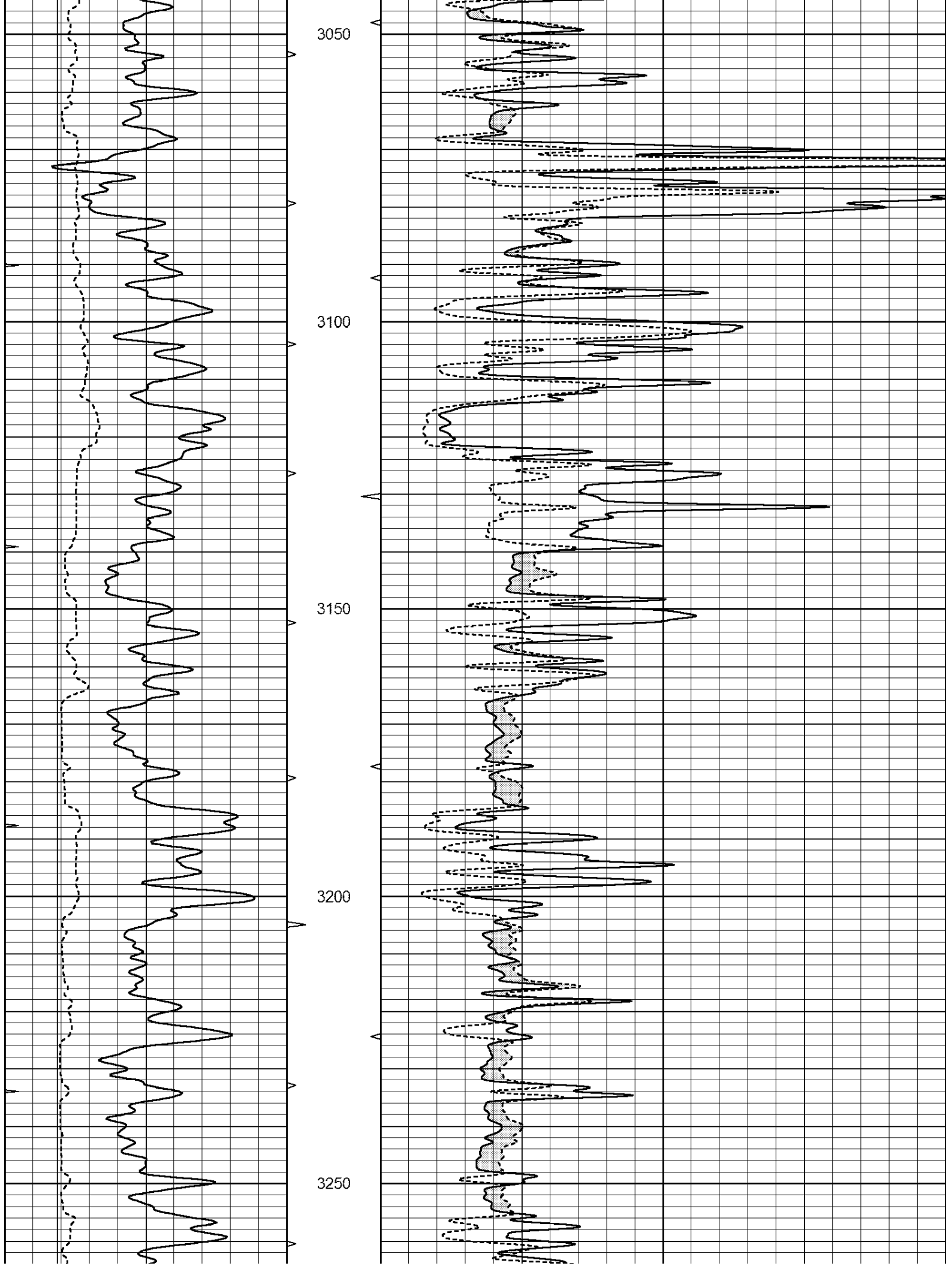


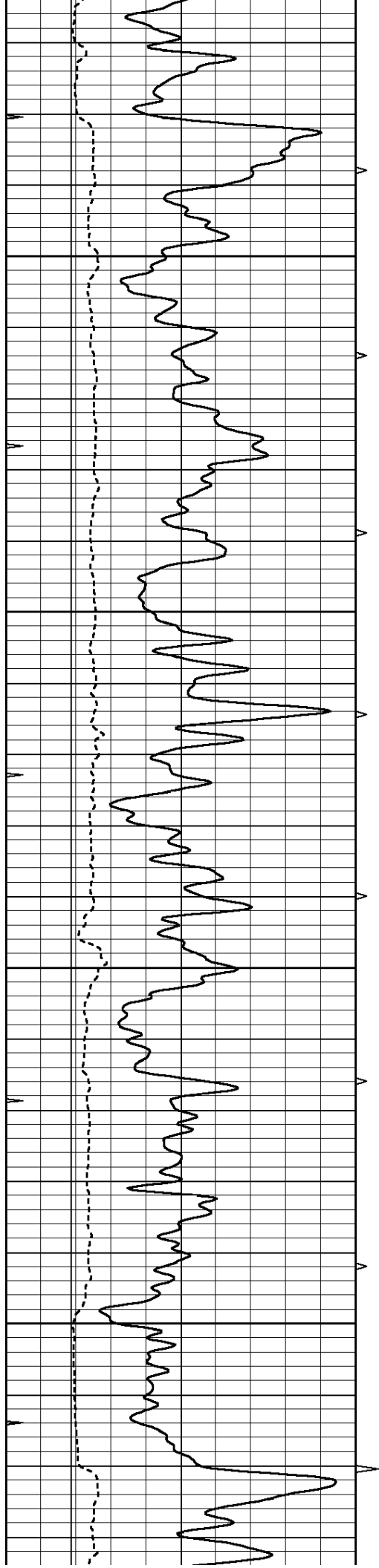










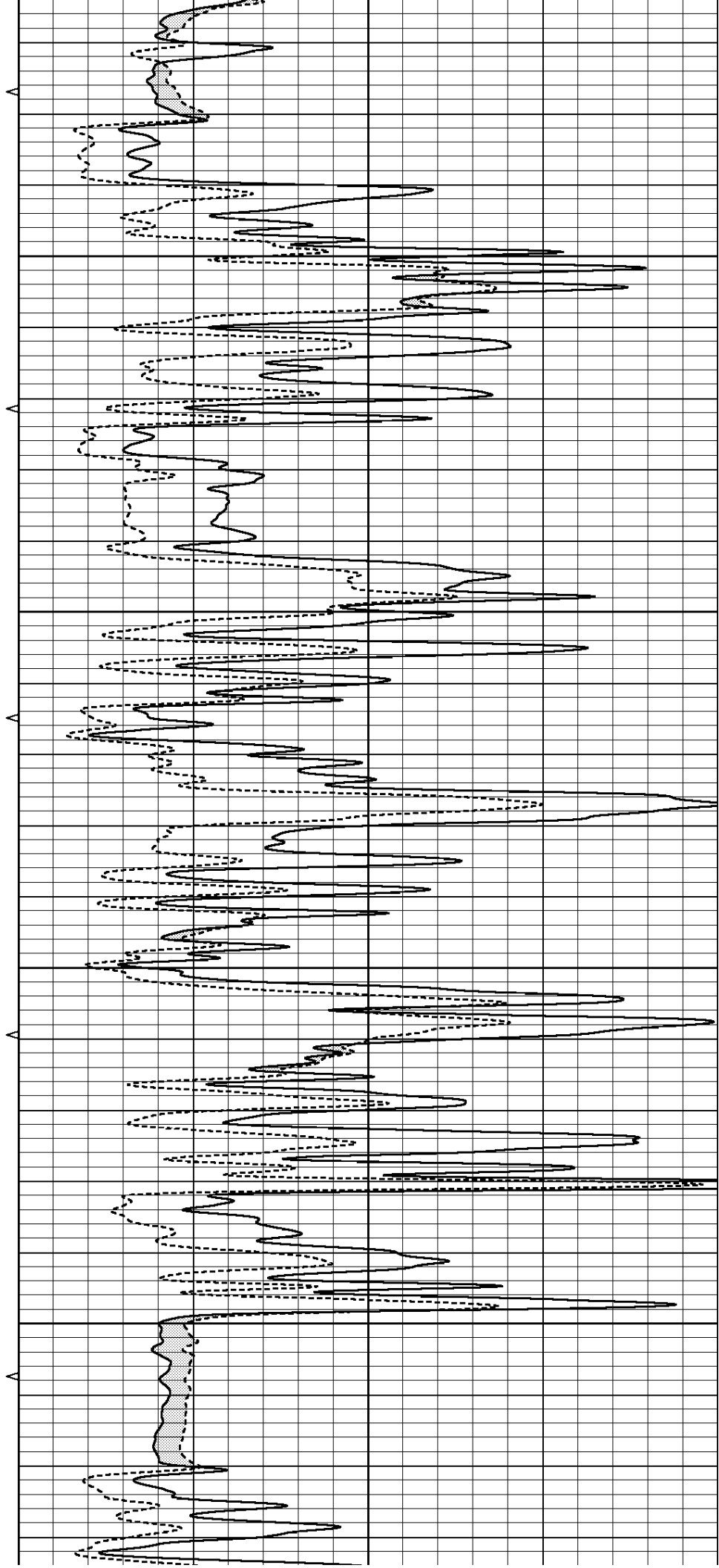


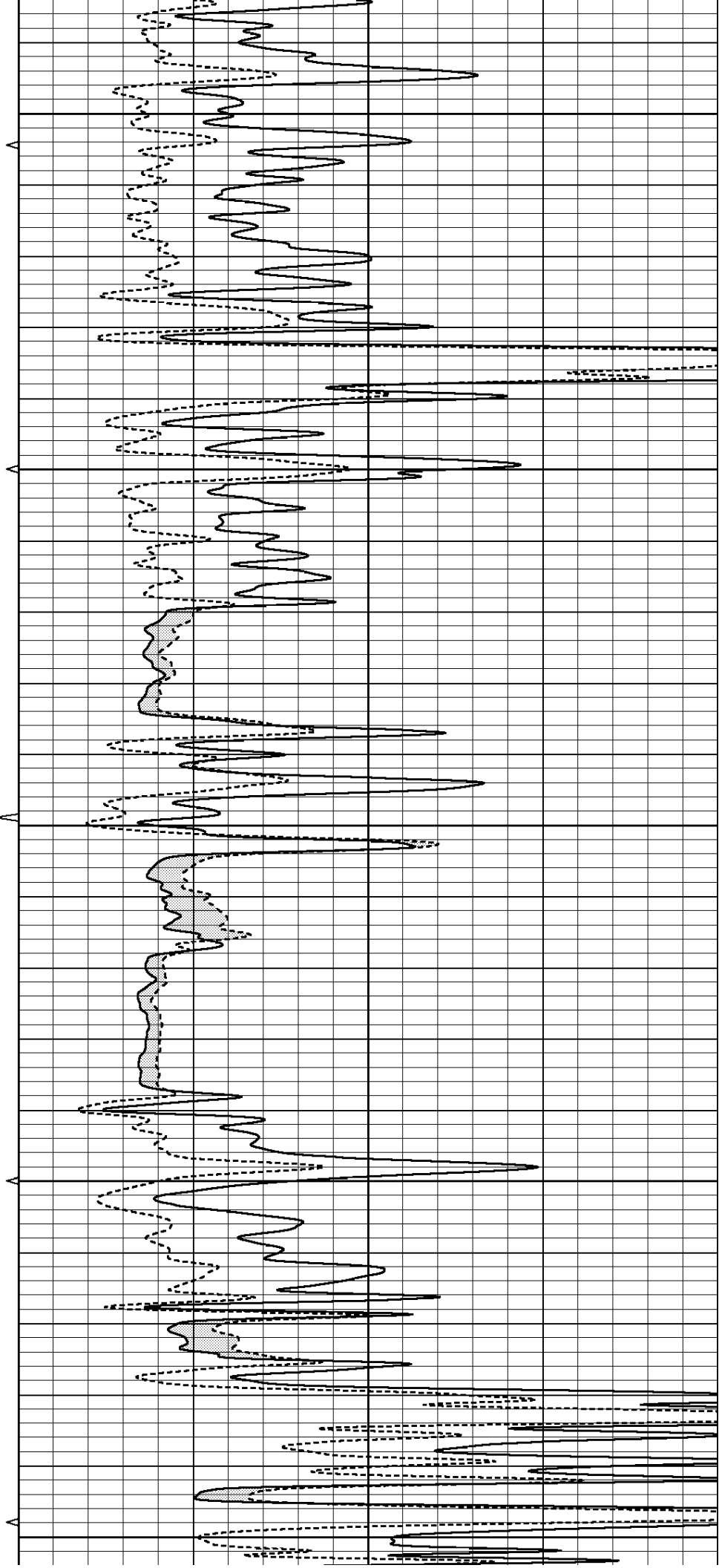
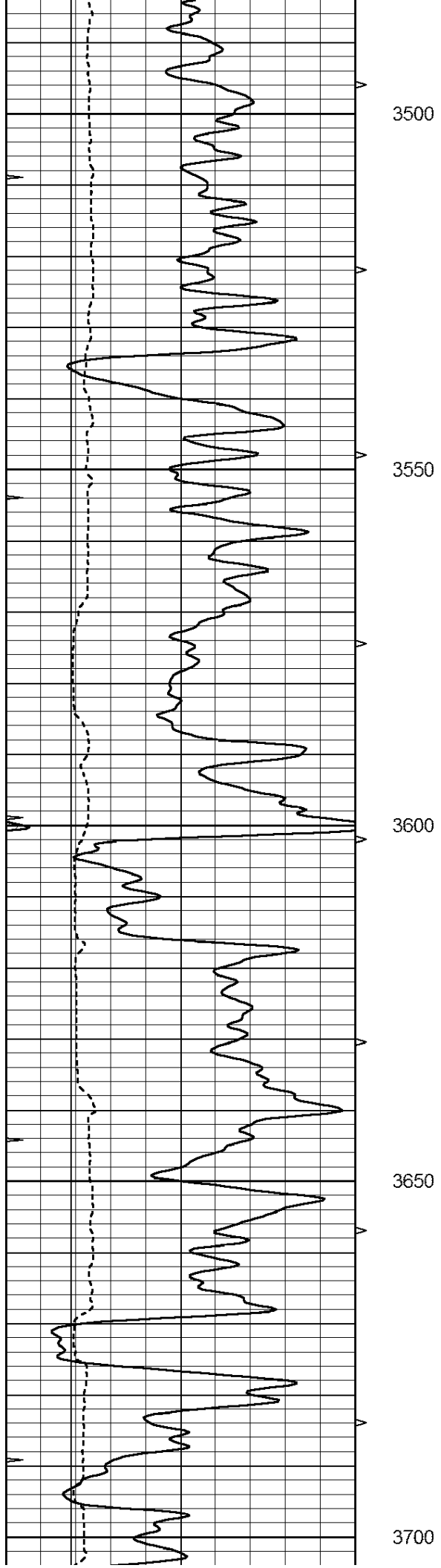
3300

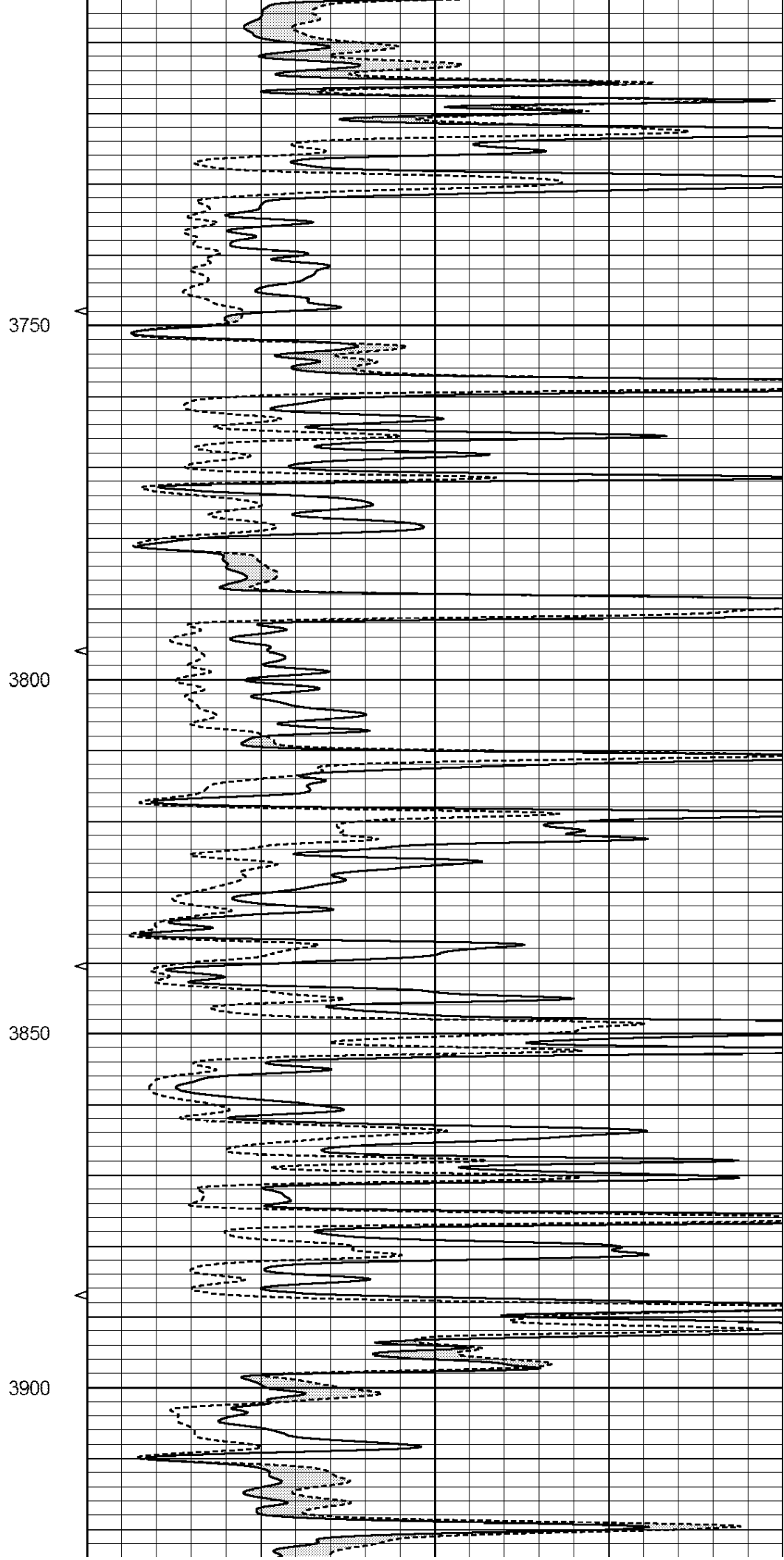
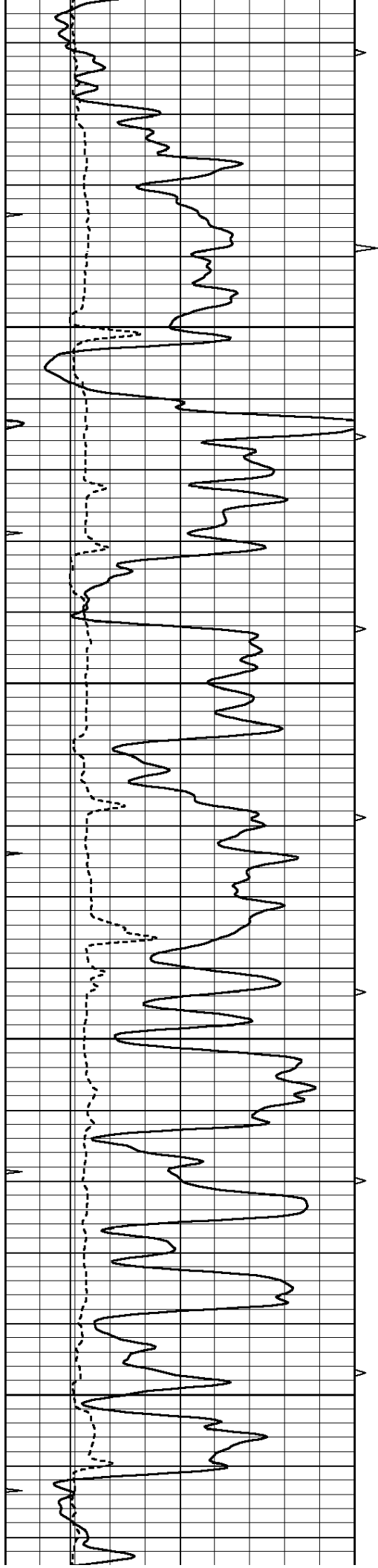
3350

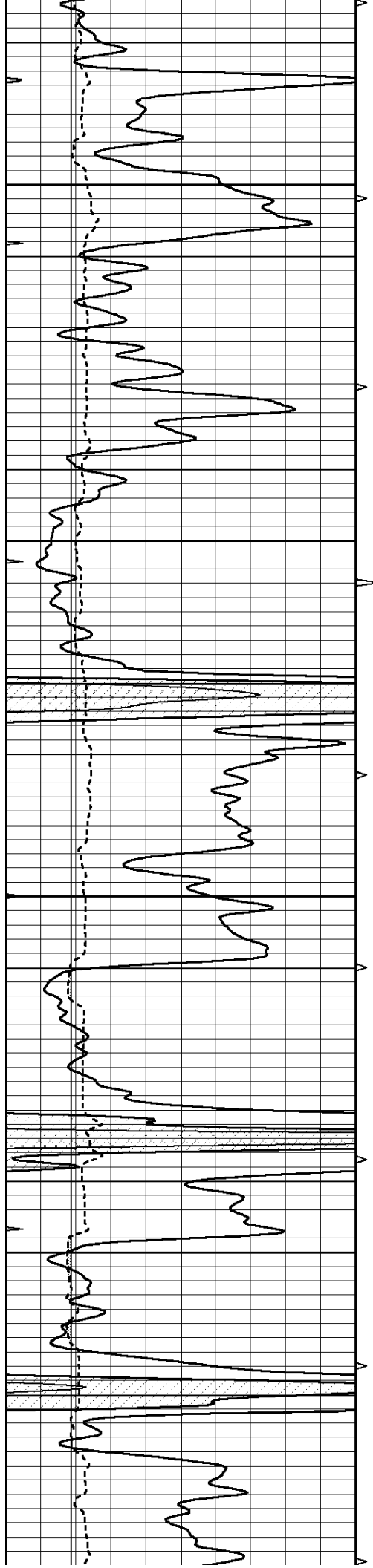
3400

3450







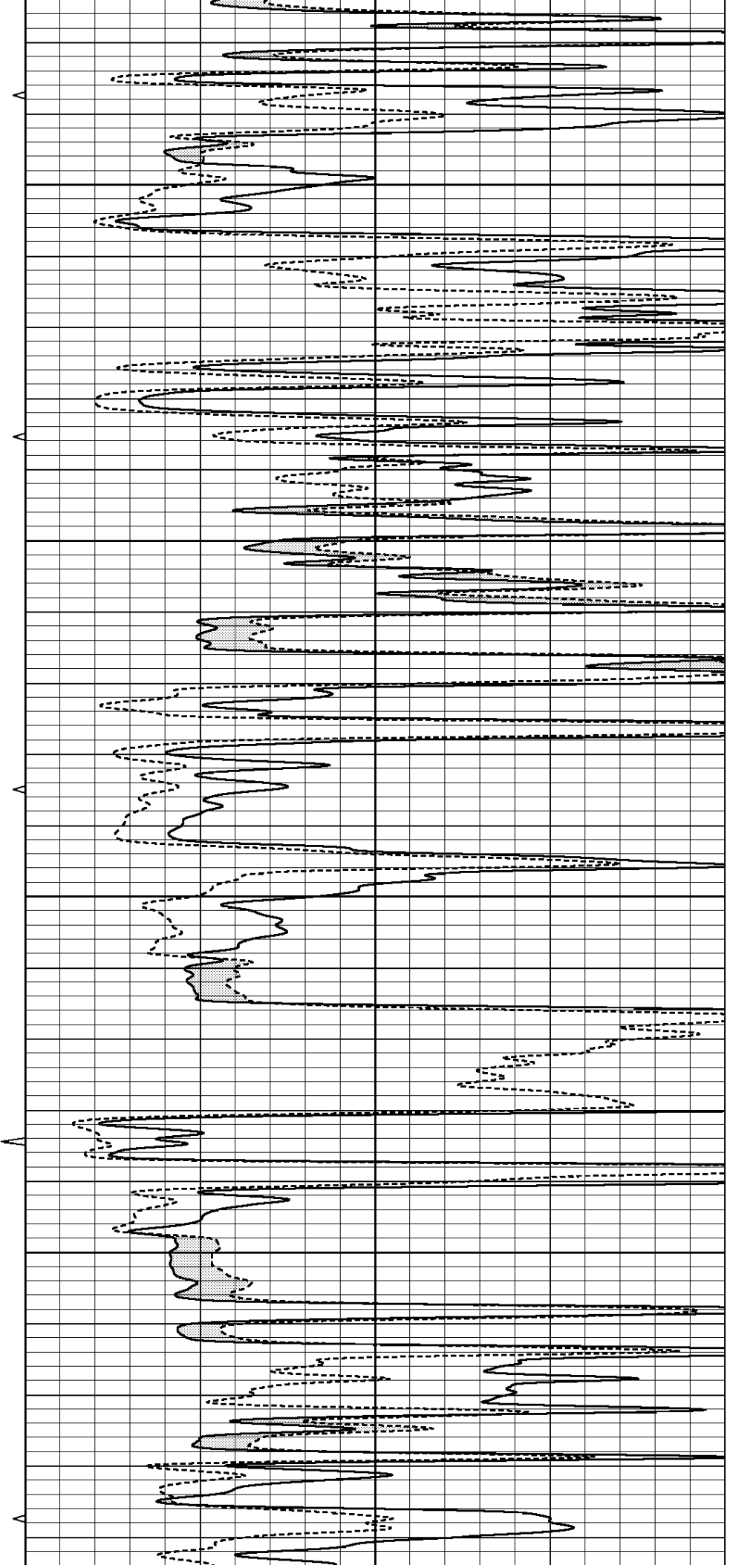


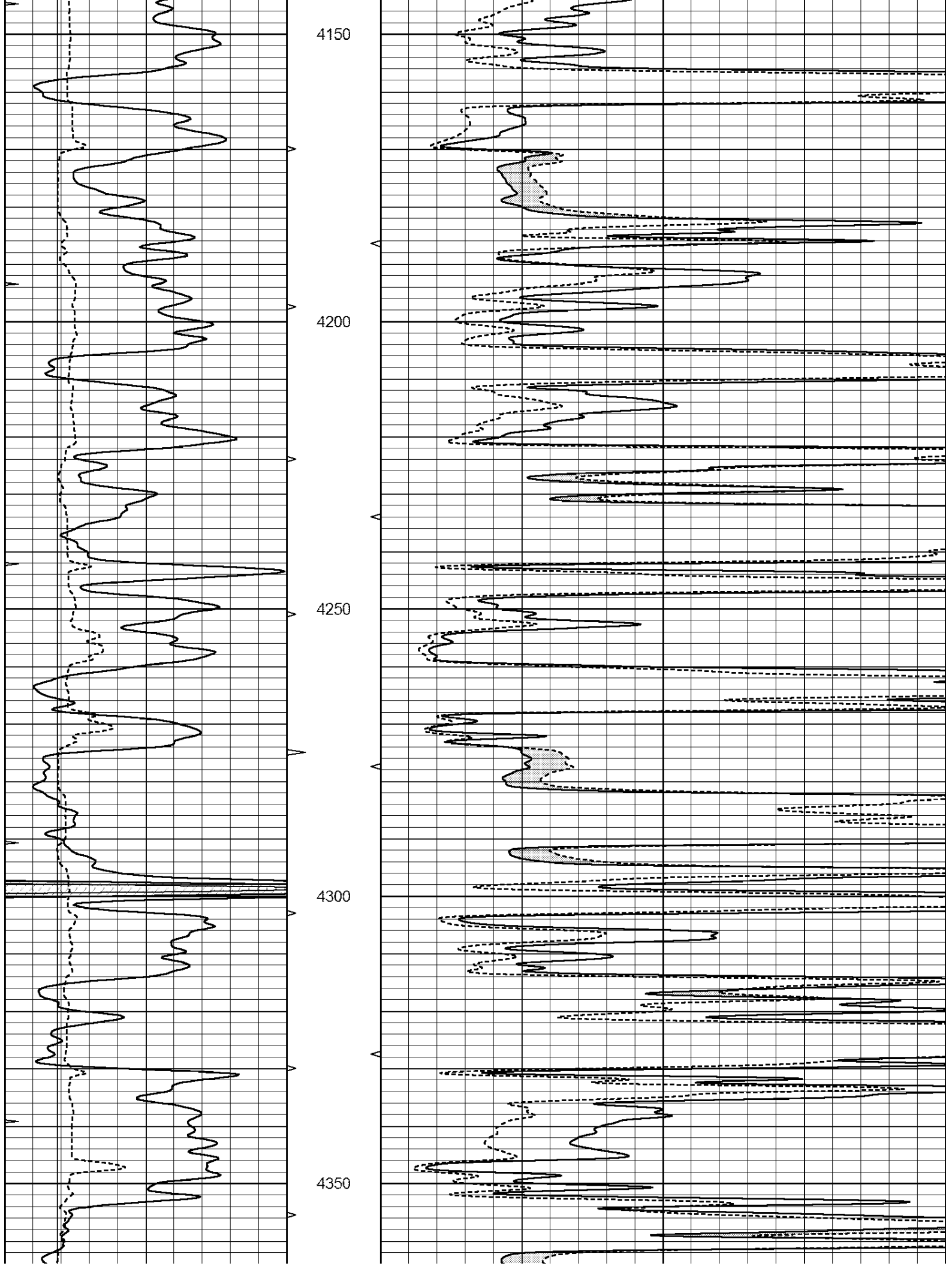
3950

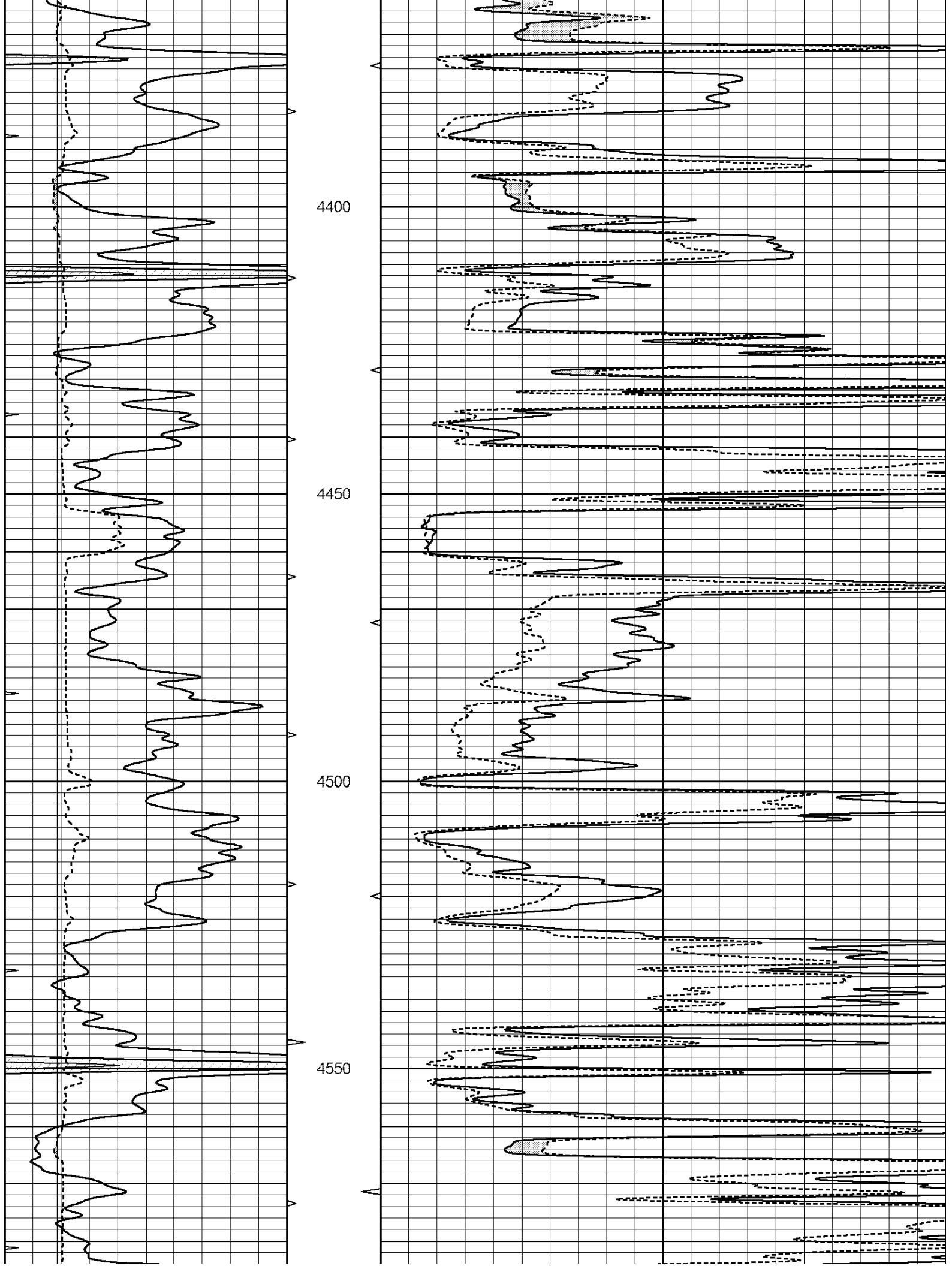
4000

4050

4100









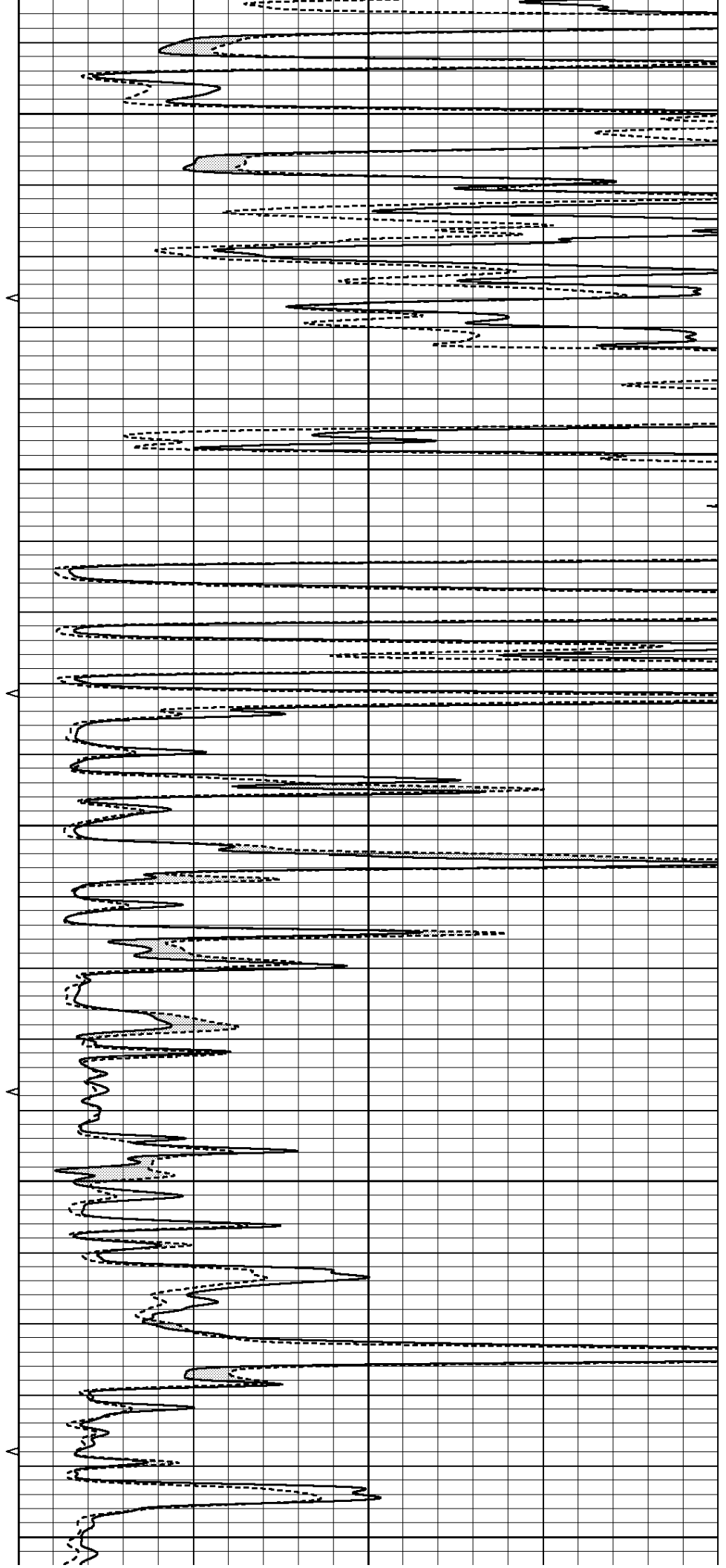
4600

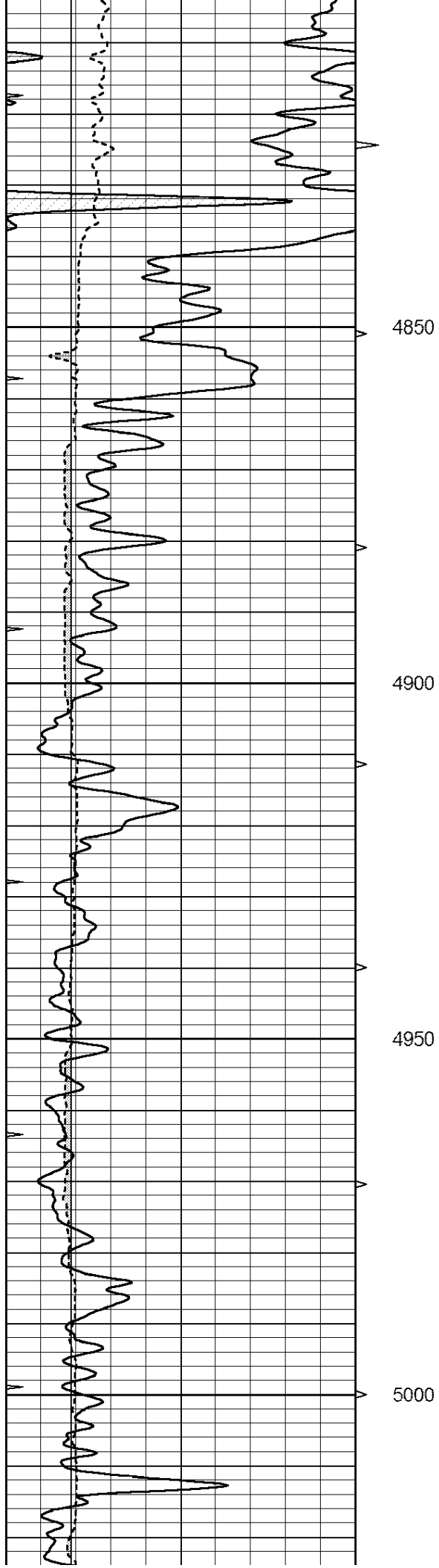
4650

4700

4750

4800



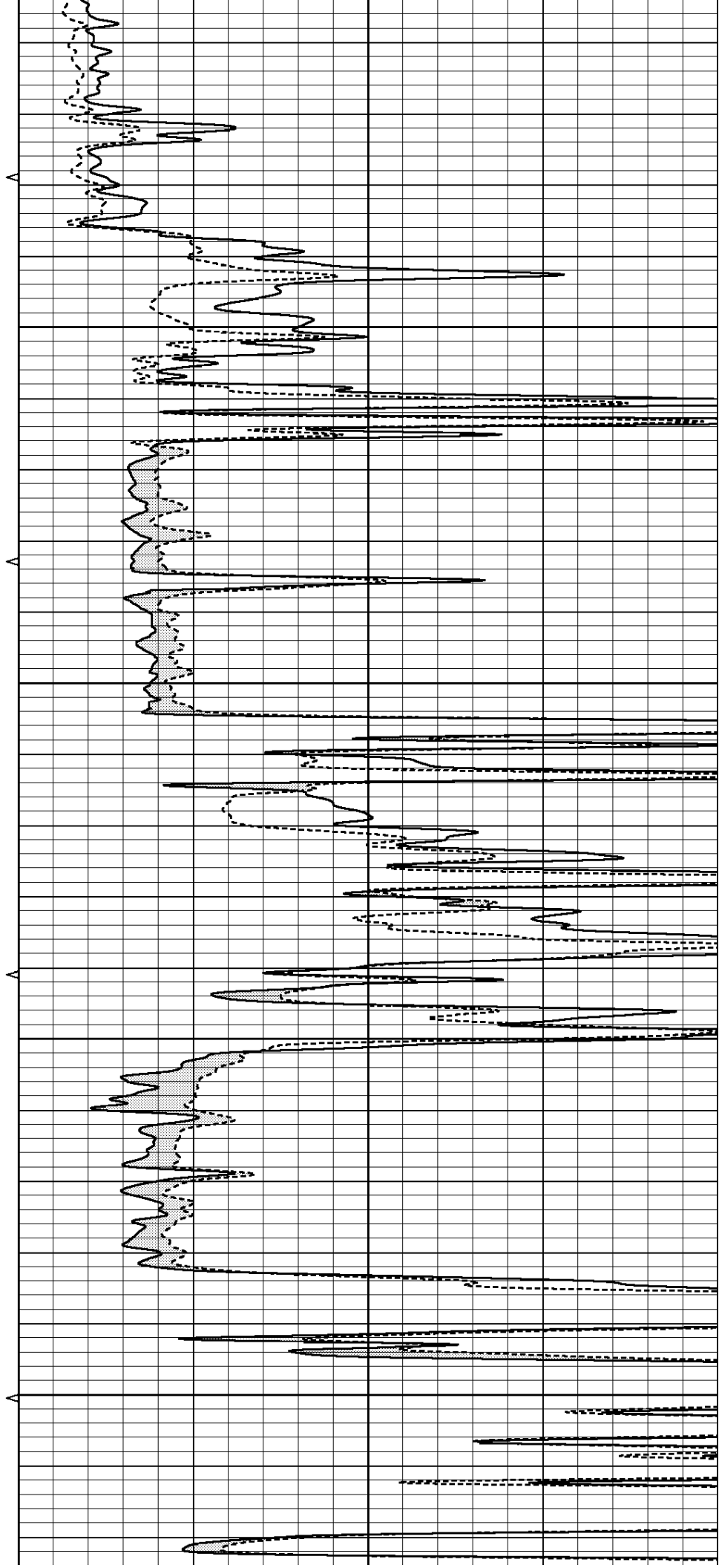


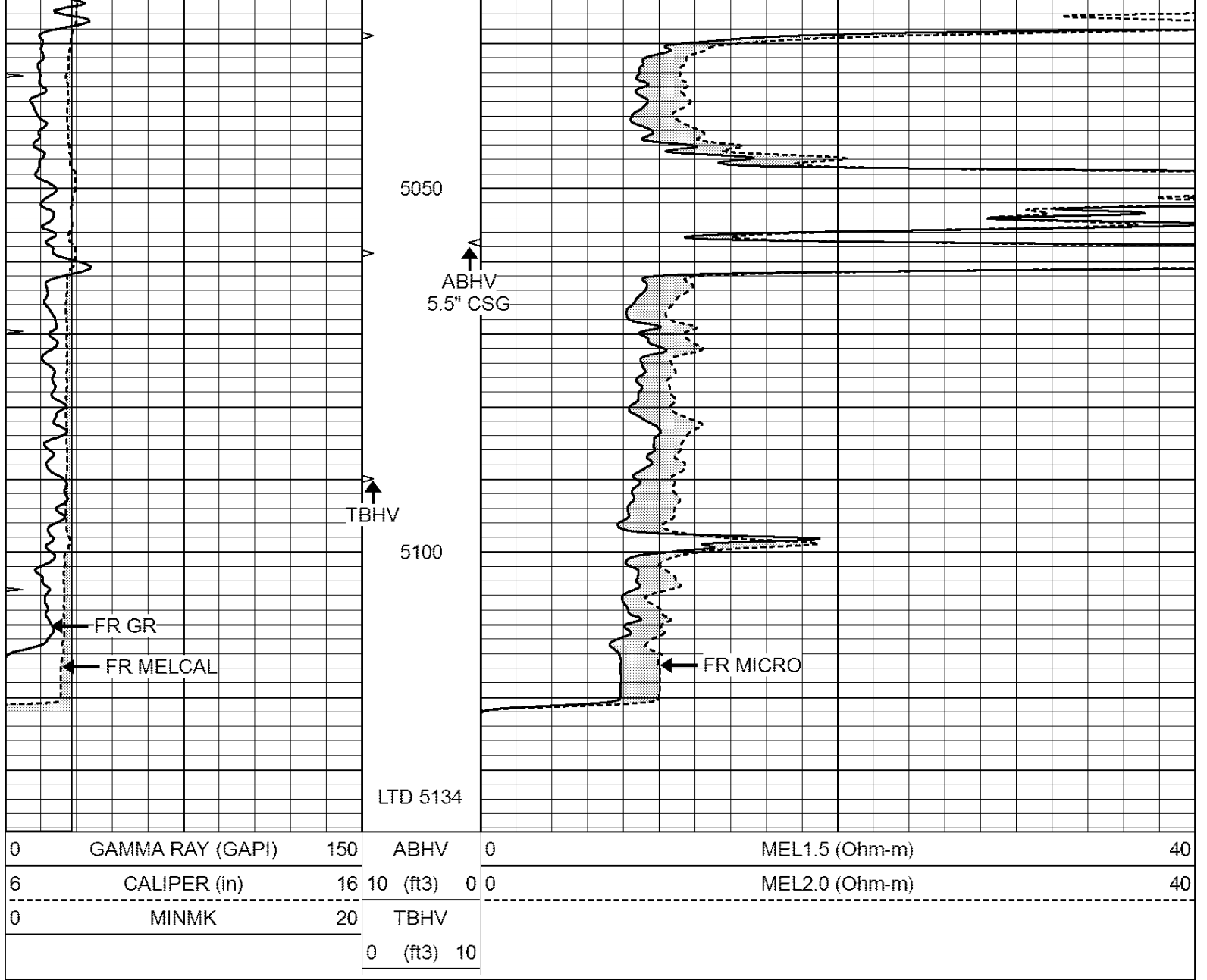
4850

4900

4950

5000

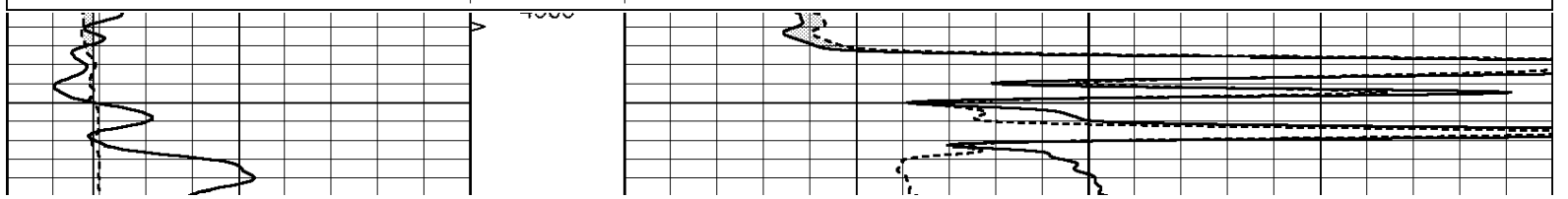


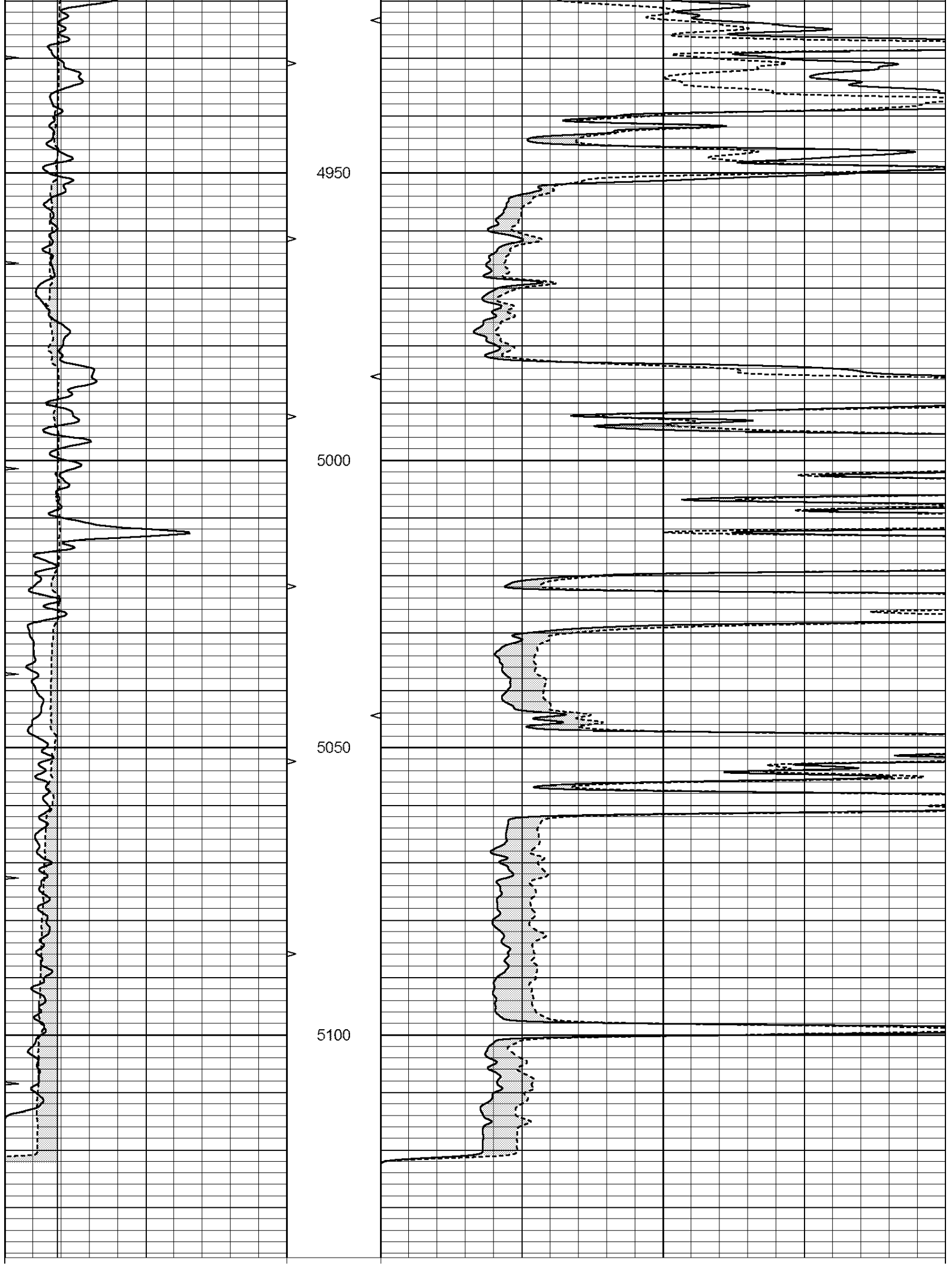


REPEAT SECTION

Database File: 24064ddn.db
 Dataset Pathname: pass5.1
 Presentation Format: _micro
 Dataset Creation: Fri Jul 18 15:59:55 2014 by Calc Open-Cased 090629
 Charted by: Depth in Feet scaled 1:240

0	GAMMA RAY (GAPI)	150	ABHV	0	MEL1.5 (Ohm-m)	40
6	CALIPER (in)	16	10 (ft3)	0 0	MEL2.0 (Ohm-m)	40
0	MINMK	20	TBHV			
			0 (ft3)	10		





0	GAMMA RAY (GAPI)	150	ABHV	0	MEL1.5 (Ohm-m)	40
6	CALIPER (in)	16	10 (ft3)	0	MEL2.0 (Ohm-m)	40
0	MINMK	20	TBHV			
			0 (ft3)	10		

Calibration Report

Database File: 24064ddn.db
 Dataset Pathname: pass5.1
 Dataset Creation: Fri Jul 18 15:59:55 2014 by Calc Open-Cased 090629

MICRO Calibration Report

Serial Number:	MICRO6	
Tool Model:	PROBE	
Performed:	Tue Jun 24 17:04:04 2014	
Caliper Calibration:	Gain=5.542	Offset=0.620
	Low Cal	High Cal
References	8.000	14.000
Readings	1.431	2.513
1.5" Calibration:	Gain=38.075	Offset=0.000
	Low Cal	High Cal
References	0.000	20.000
Readings	0.004	1.196
2" Calibration:	Gain=44.000	Offset=-0.600
	Low Cal	High Cal
References	0.000	20.000
Readings	0.006	0.913

Gamma Ray Calibration Report

Serial Number:	GR6	
Tool Model:	OPEN	
Performed:	Sat May 31 01:22:06 2014	
Calibrator Value:	150.0	GAPI
Background Reading:	0.0	cps
Calibrator Reading:	276.0	cps
Sensitivity:	0.7535	GAPI/cps