



**COMPLETION
& PRODUCTION
SERVICES CO.**

**SONIC
LOG**

Company DOWNING NELSON OIL COMPANY
Well KRAMER UNIT #1-24
Field WILDCAT
County CHEYENNE
State KANSAS

Company DOWNING NELSON OIL COMPANY
Well KRAMER UNIT #1-24
Field WILDCAT
County CHEYENNE State KANSAS

Location: API # : 15-023-21394-0000
317' FSL & 1085' FWL
SEC 24 TWP 5S RGE 37W
Permanent Datum GROUND LEVEL Elevation 3276
Log Measured From KELLY BUSHING 13' A.G.L.
Drilling Measured From KELLY BUSHING
Elevation
K.B. 3289
D.F. 3287
G.L. 3276

Date	7/18/14		
Run Number	TWO		
Depth Driller	5129		
Depth Logger	5134		
Bottom Logged Interval	5124		
Top Log Interval	450		
Casing Driller	8 5/8" @ 480		
Casing Logger	476		
Bit Size	7 7/8"		
Type Fluid in Hole	CHEMICAL MUD	CHLORIDES 500 PPM	
Density / Viscosity	9.3/49		
pH / Fluid Loss	10.5/8.0		
Source of Sample	FLOWLINE		
Rm @ Meas. Temp	1.20 @ 88F		
Rmt @ Meas. Temp	.90 @ 88F		
Rmc @ Meas. Temp	1.44 @ 88F		
Source of Rmf / Rmc	MEASUREMENT		
Rm @ BHT	.83 @ 126F		
Time Circulation Stopped	2 HOURS		
Time Logger on Bottom			
Maximum Recorded Temperature	126F		
Equipment Number	4010		
Location	HAYS, KANSAS		
Recorded By	JASON CAPPELLUCCI		
Witnessed By	RON NELSON		

<<< Fold Here >>>

All interpretations are opinions based on inferences from electrical or other measurements and we cannot and do not guarantee the accuracy or correctness of any interpretation, and we shall not, except in the case of gross or willful negligence on our part, be liable or responsible for any loss, costs, damages, or expenses incurred or sustained by anyone resulting from any interpretation made by any of our officers, agents or employees. These interpretations are also subject to our general terms and conditions set out in our current Price Schedule.

Comments

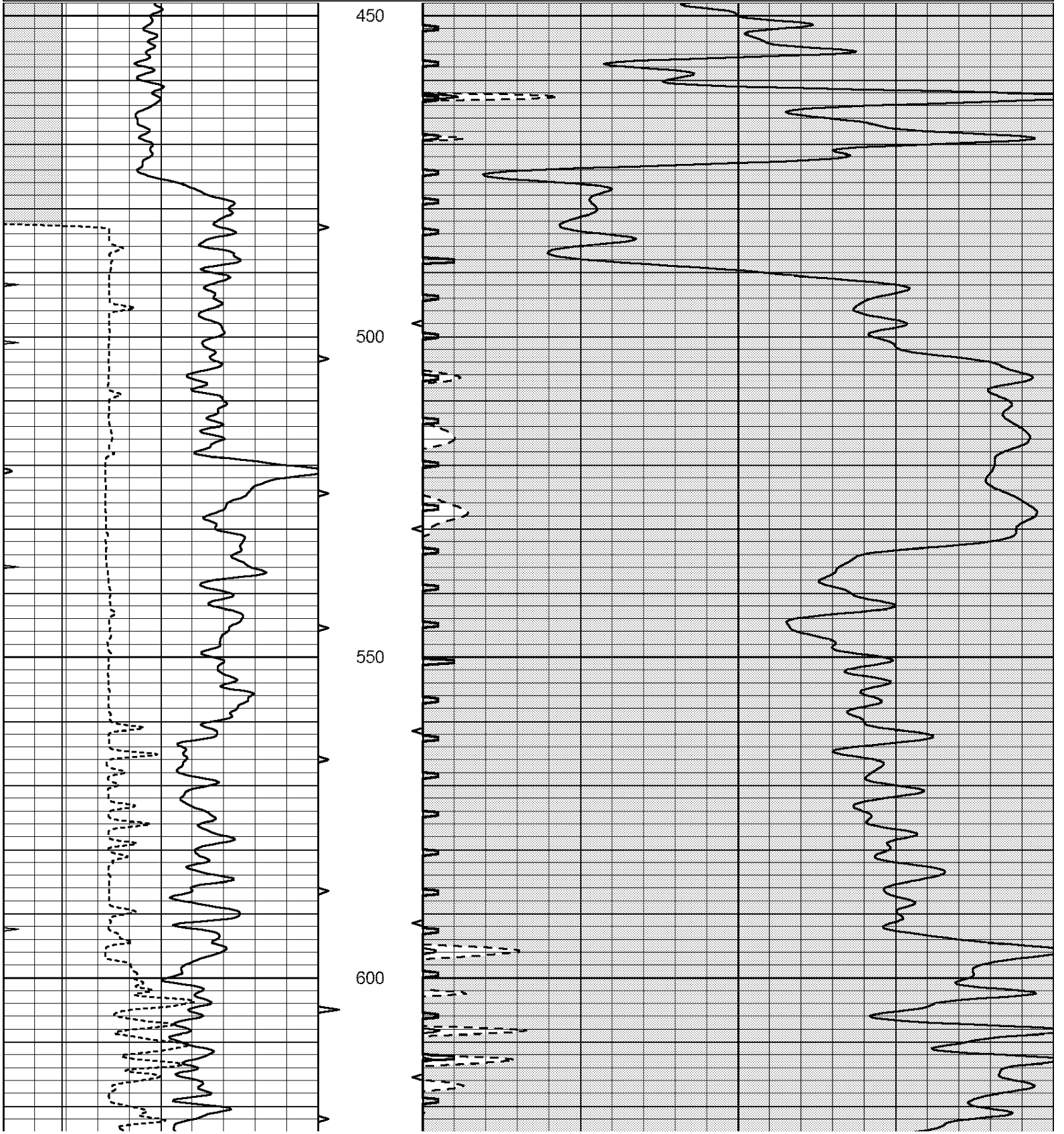
THANK YOU FOR USING NABORS, HAYS, KS. (785) 628-6395
DIRECTIONS:
BREWSTER, KS. - 17 NORTH TO CURVE - 3 WEST - 2 NORTH - 1/4 EAST
SOUTH INTO

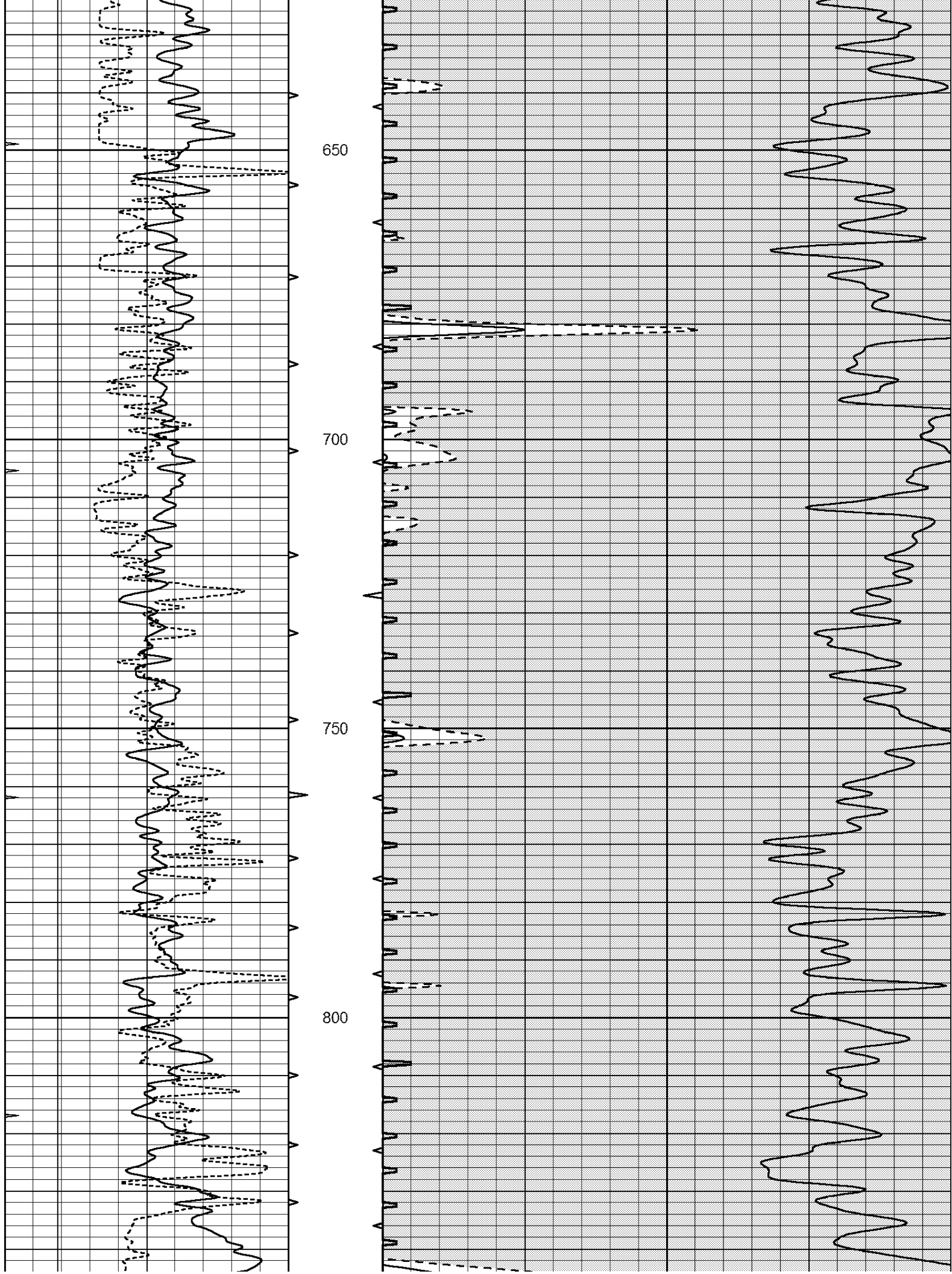


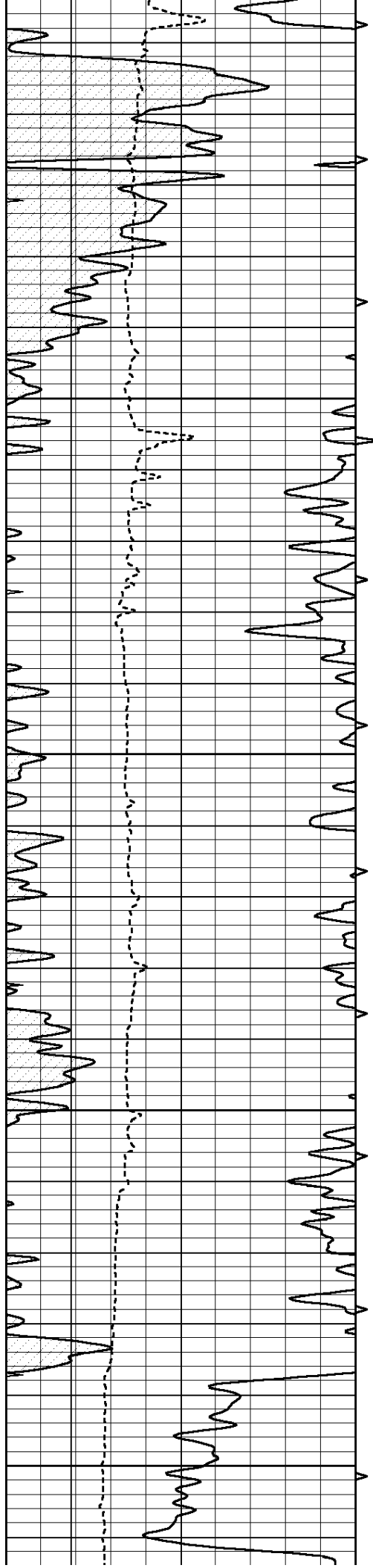
MAIN SECTION

Database File: 24064ddn.db
 Dataset Pathname: pass6.1
 Presentation Format: _slt
 Dataset Creation: Fri Jul 18 16:06:26 2014
 Charted by: Depth in Feet scaled 1:240

0	GAMMA RAY (GAPI)	150	ABHV	140	DELTA TIME (usec/ft)	40
6	CALIPER (in)	16	10 (ft3) 0	30	SONIC POROSITY (pu)	-10
0	MINMK	20	TBHV	0	ITT (msec)	20
			0 (ft3) 10			







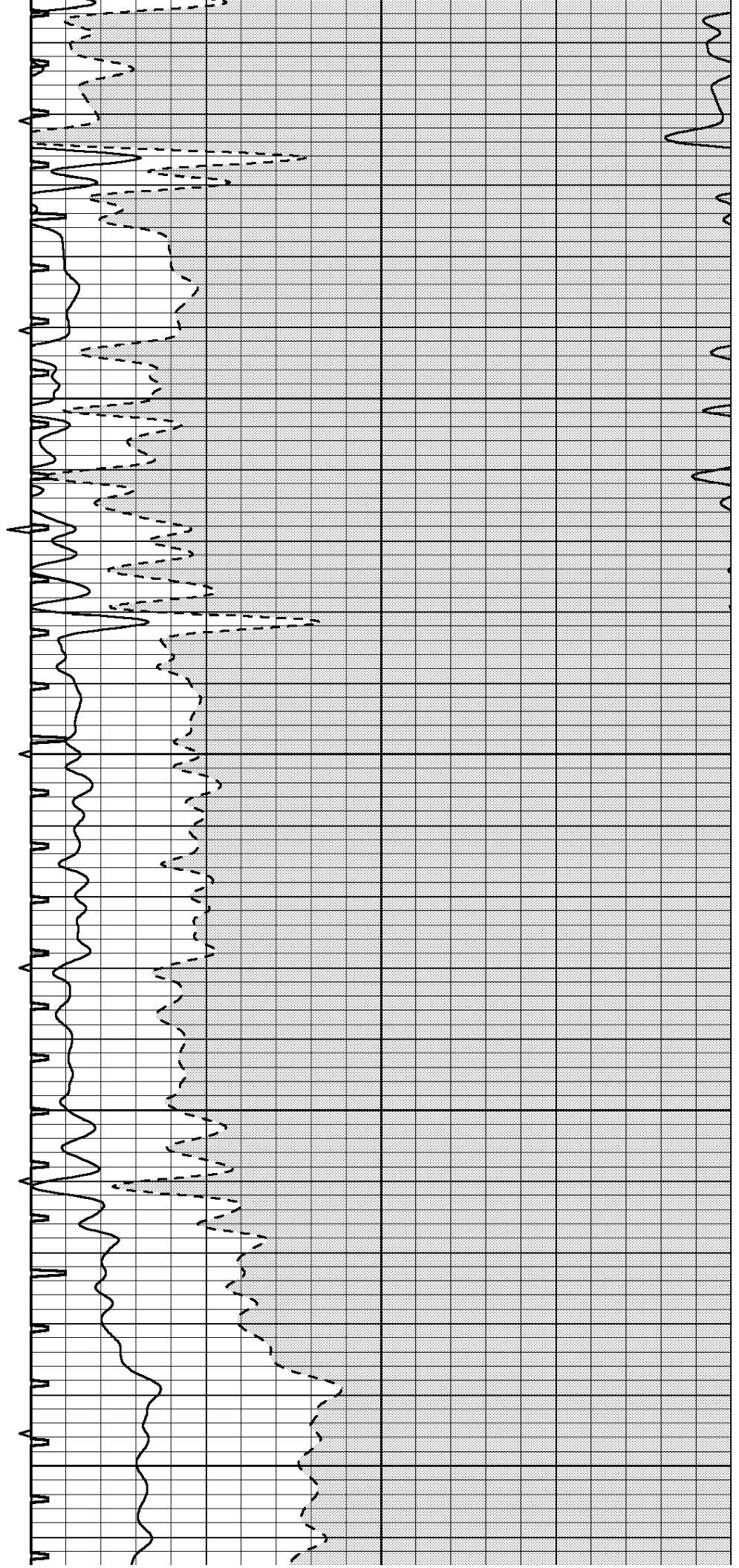
850

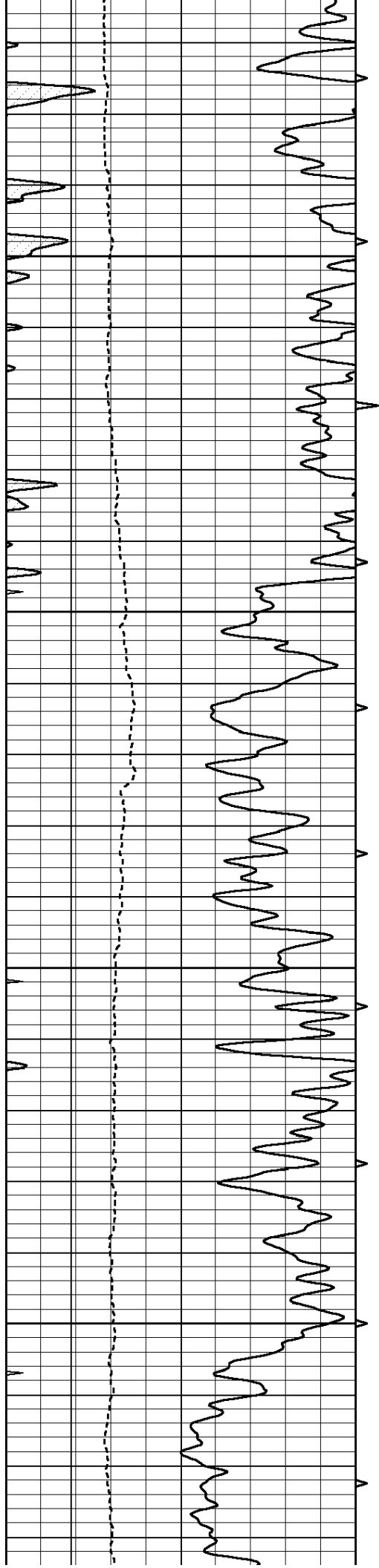
900

950

1000

1050



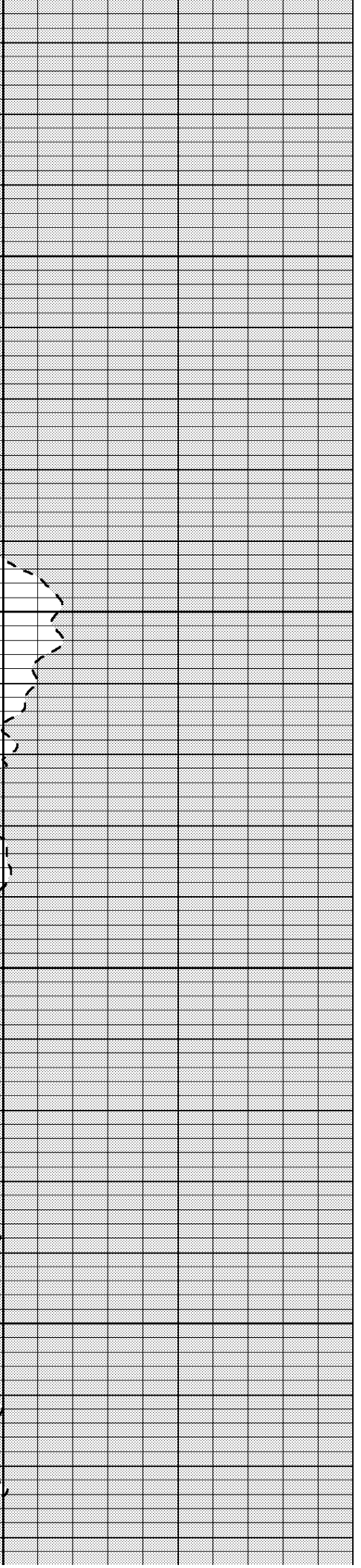
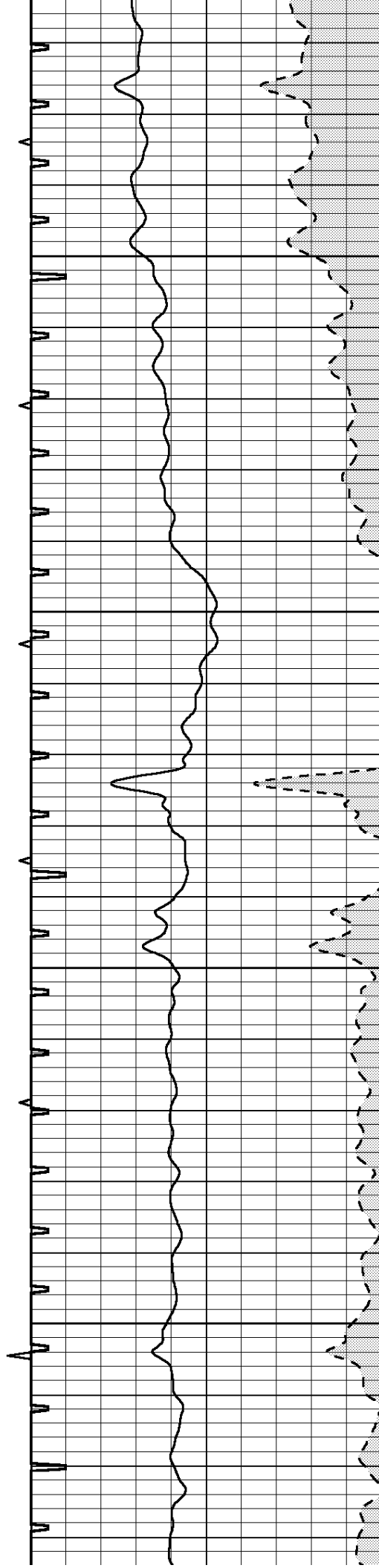


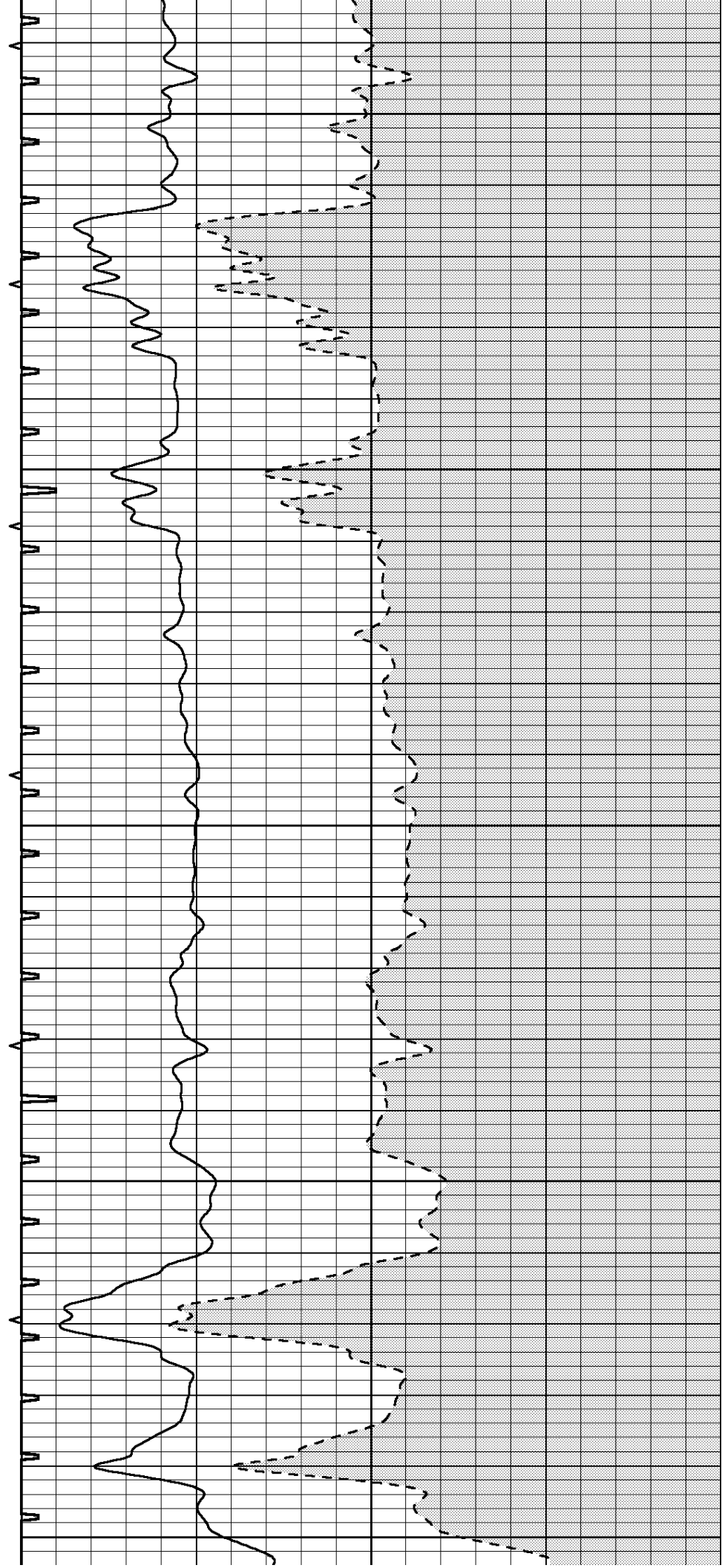
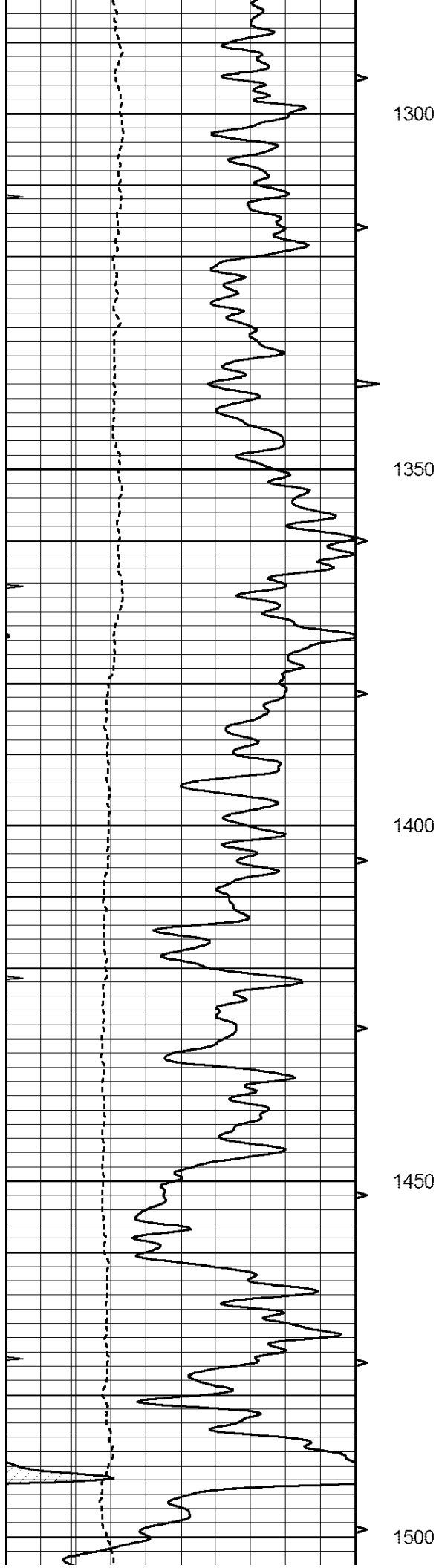
1100

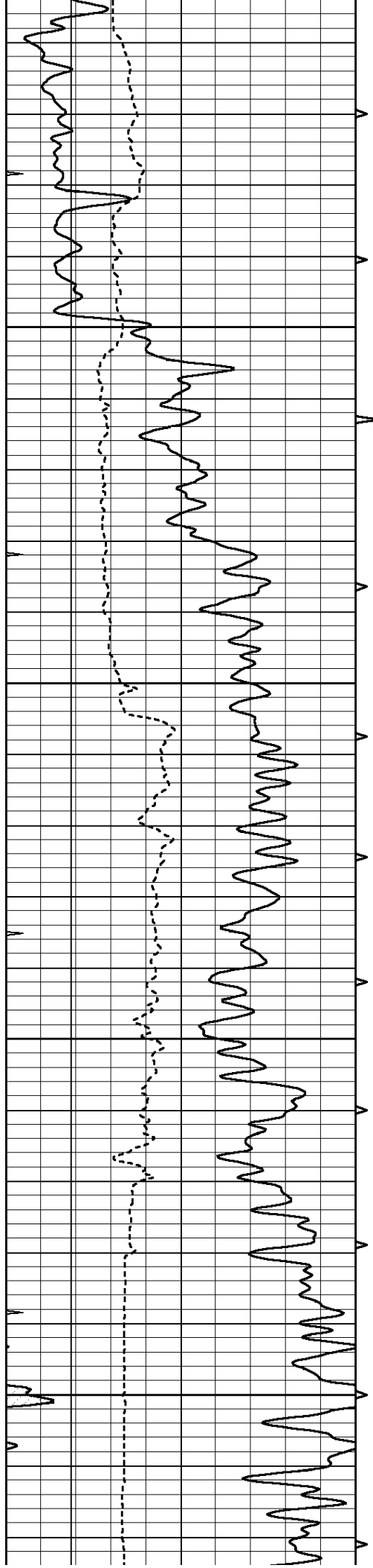
1150

1200

1250





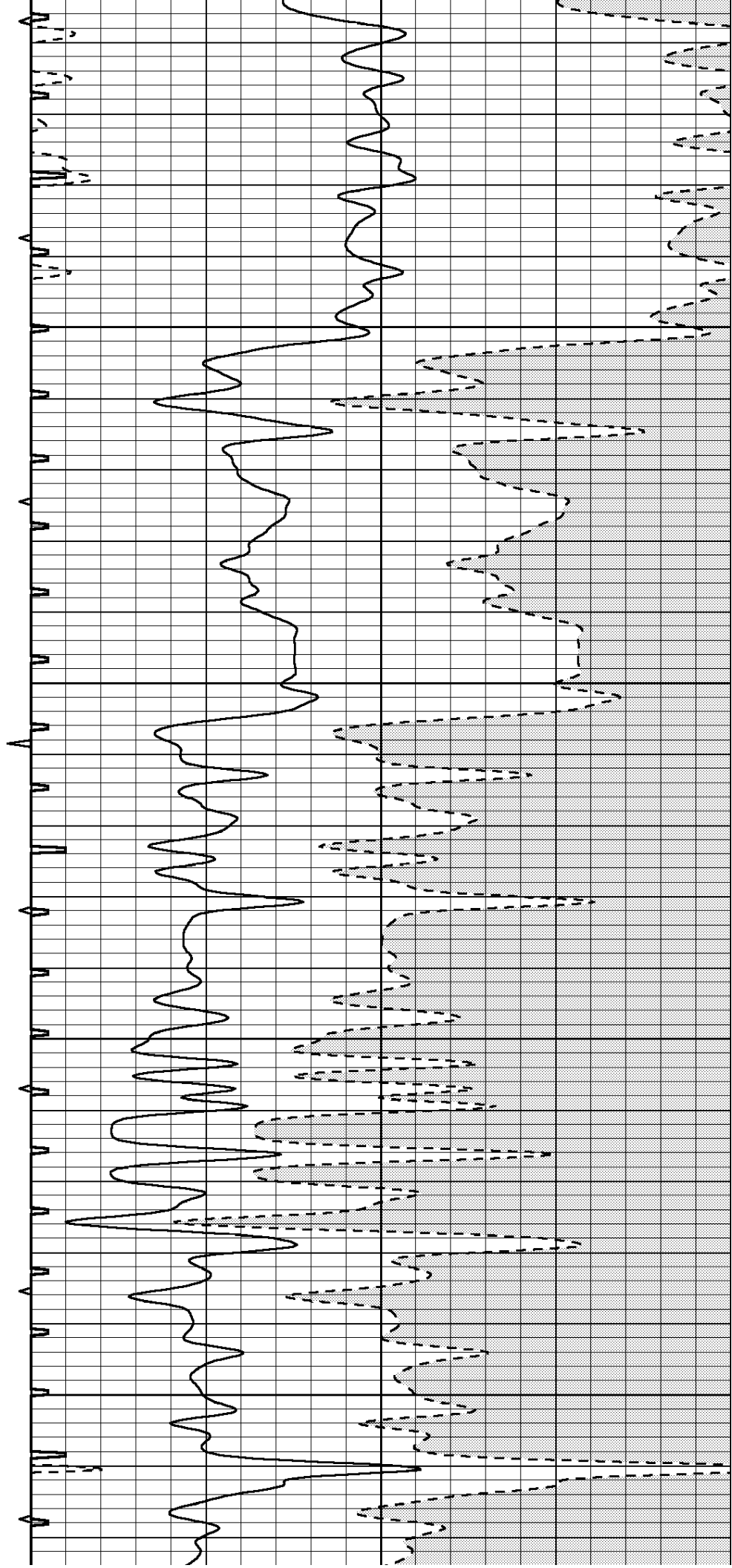


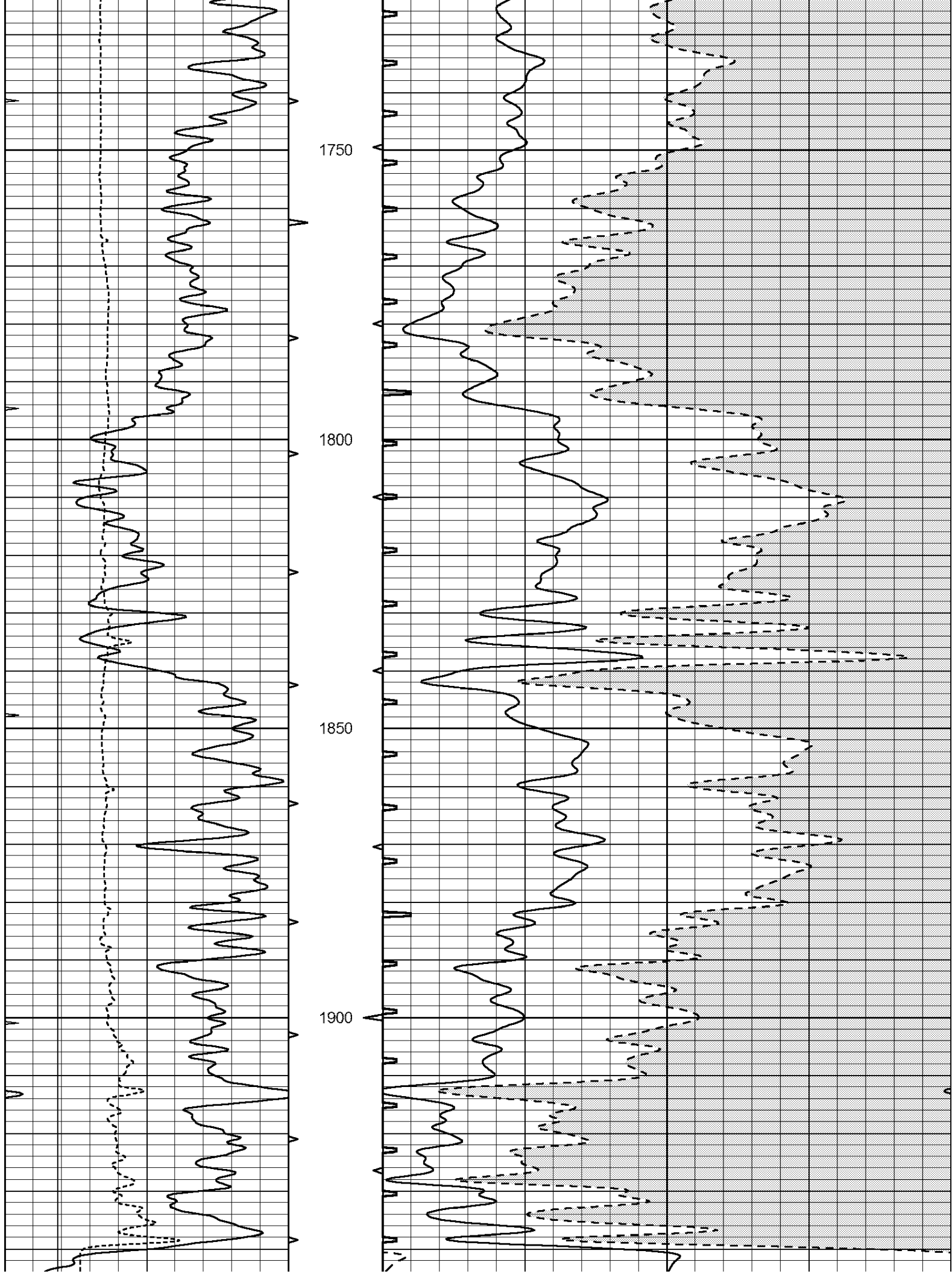
1550

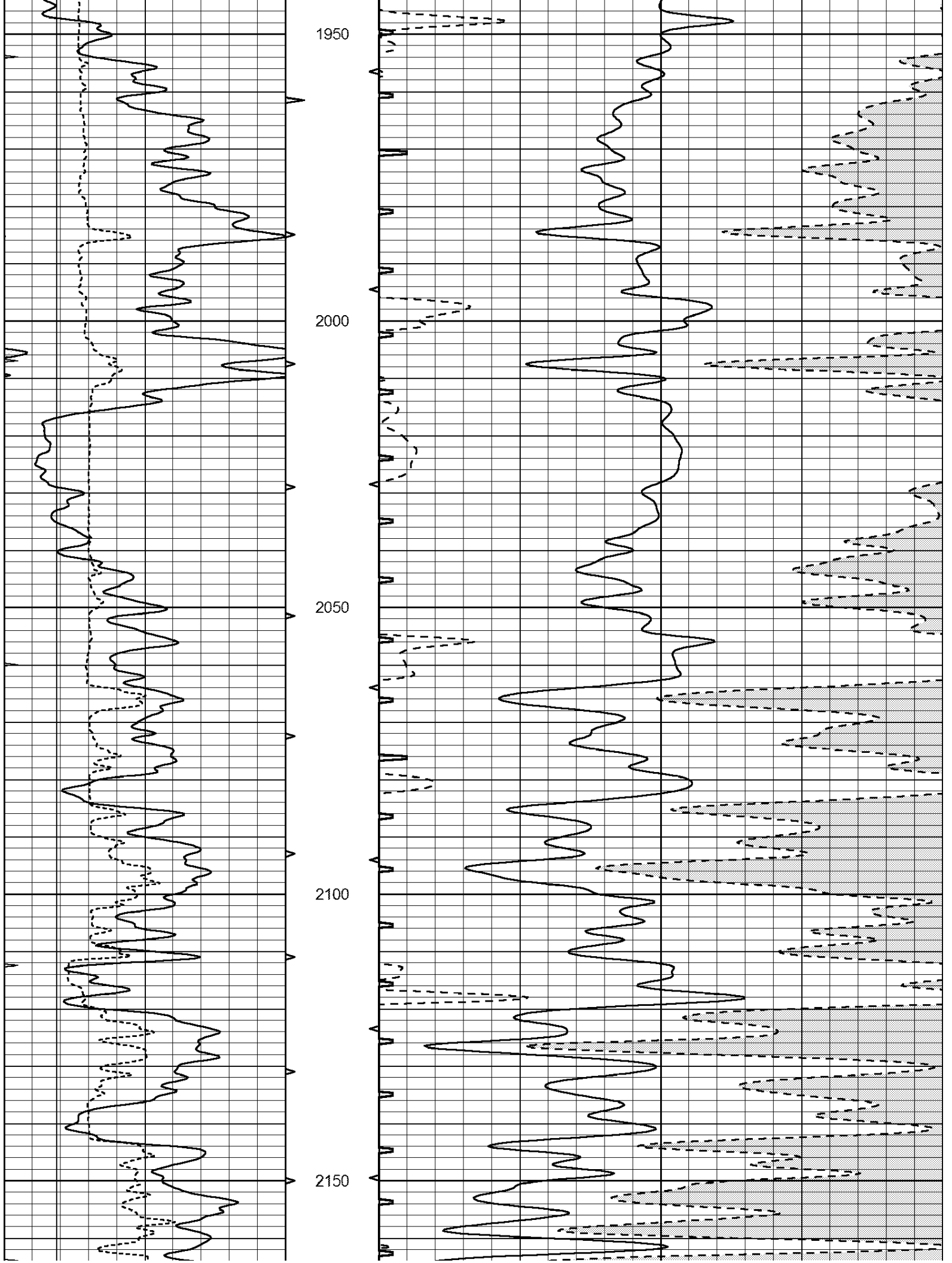
1600

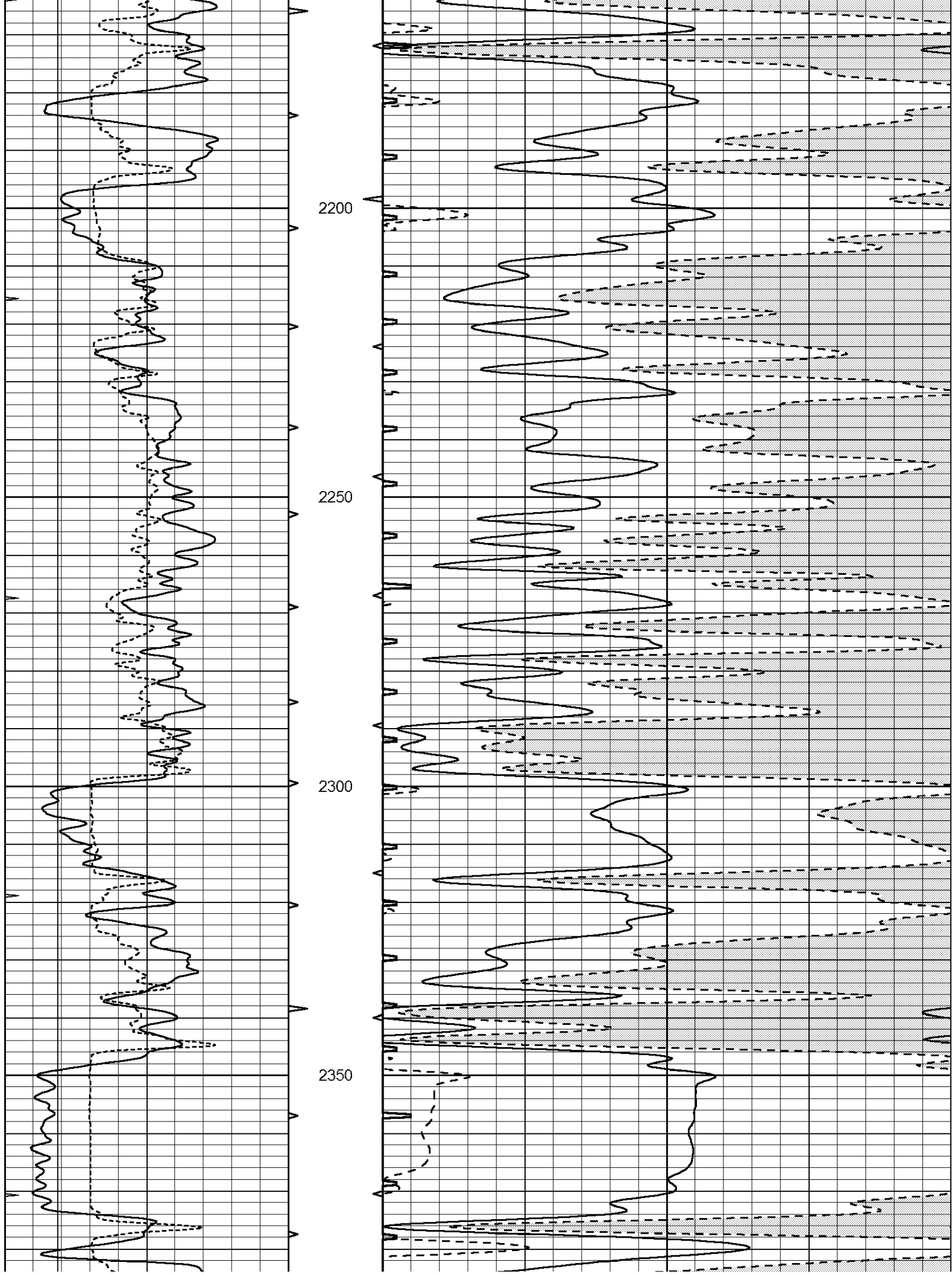
1650

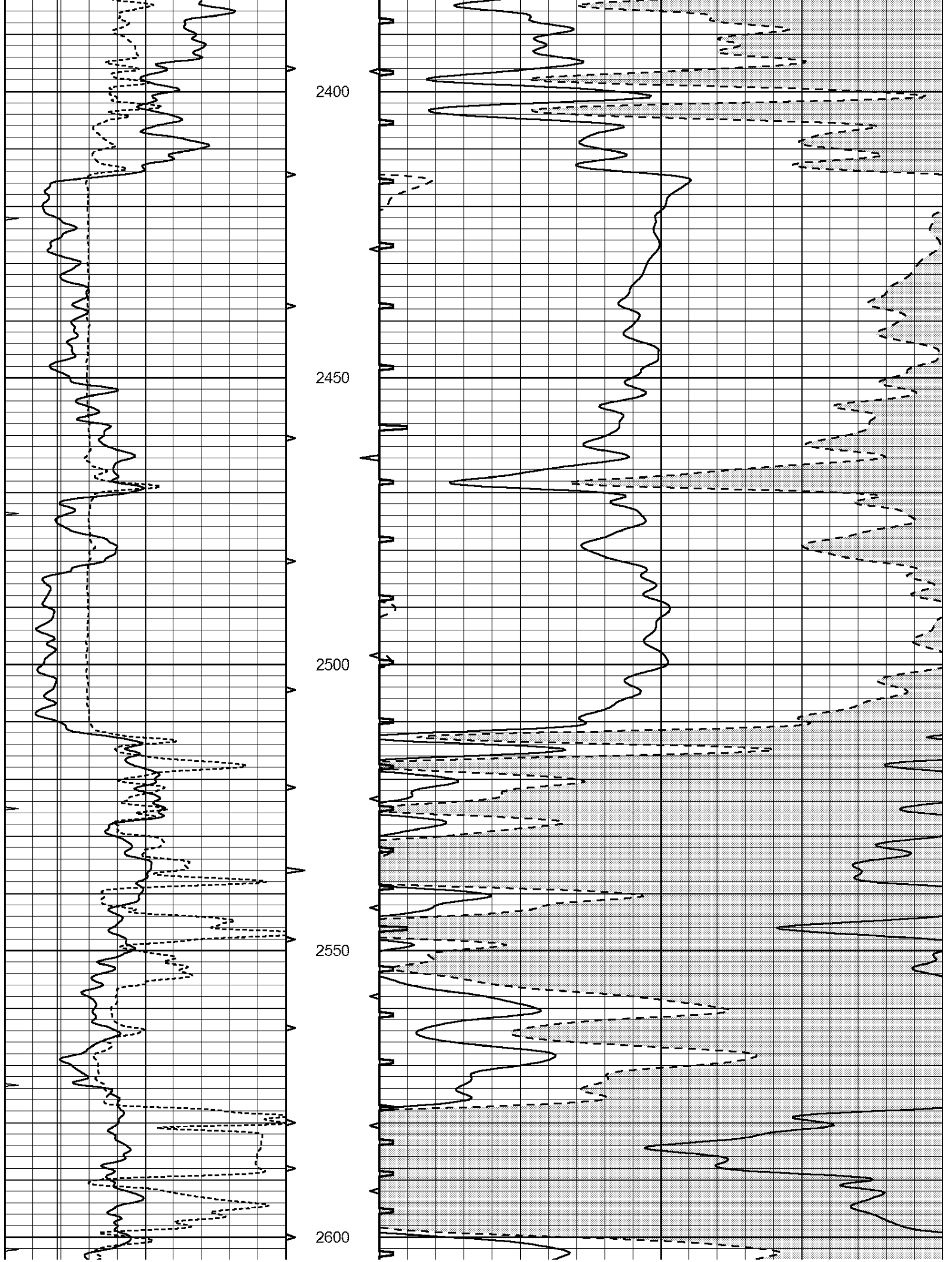
1700

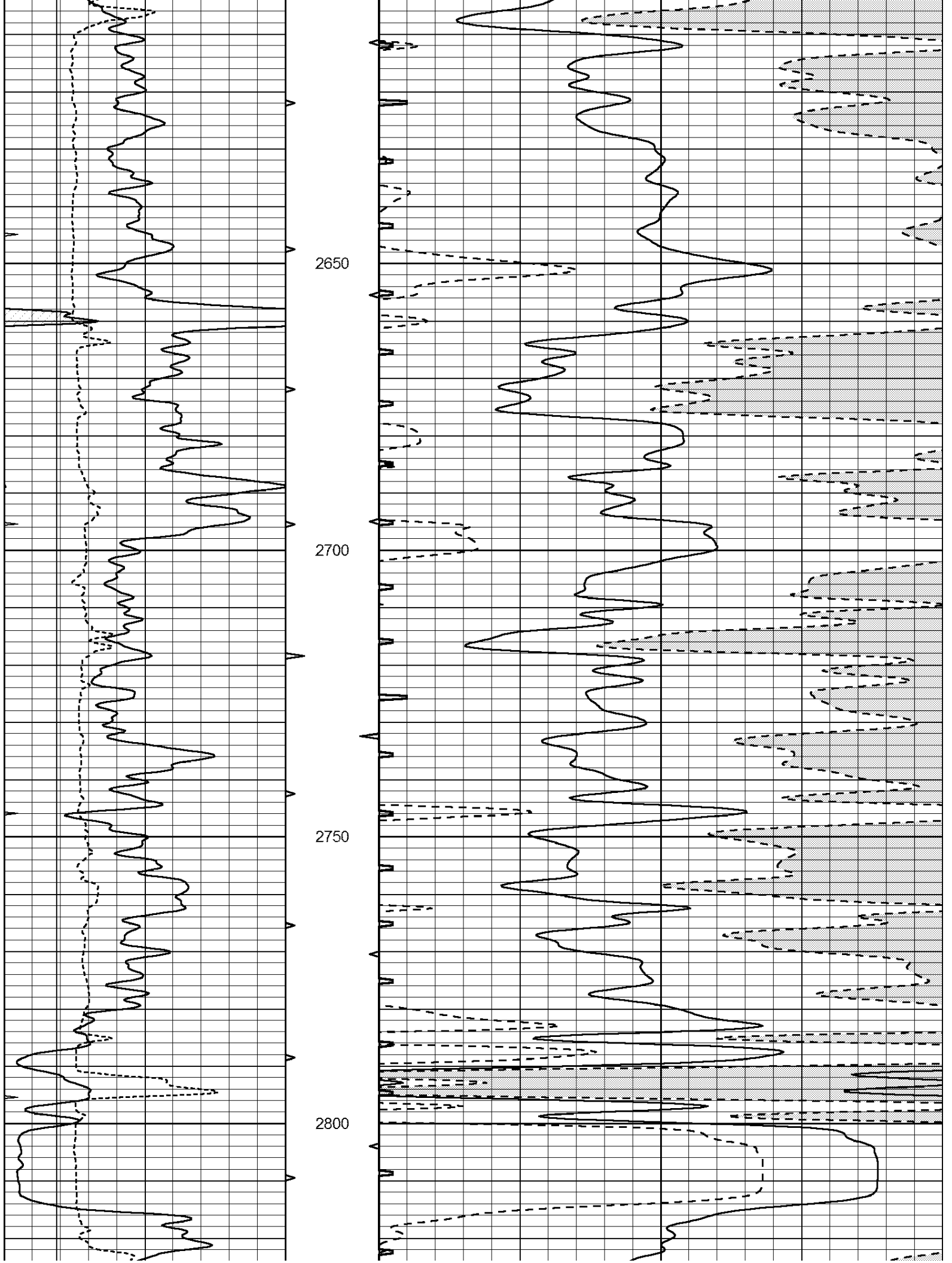


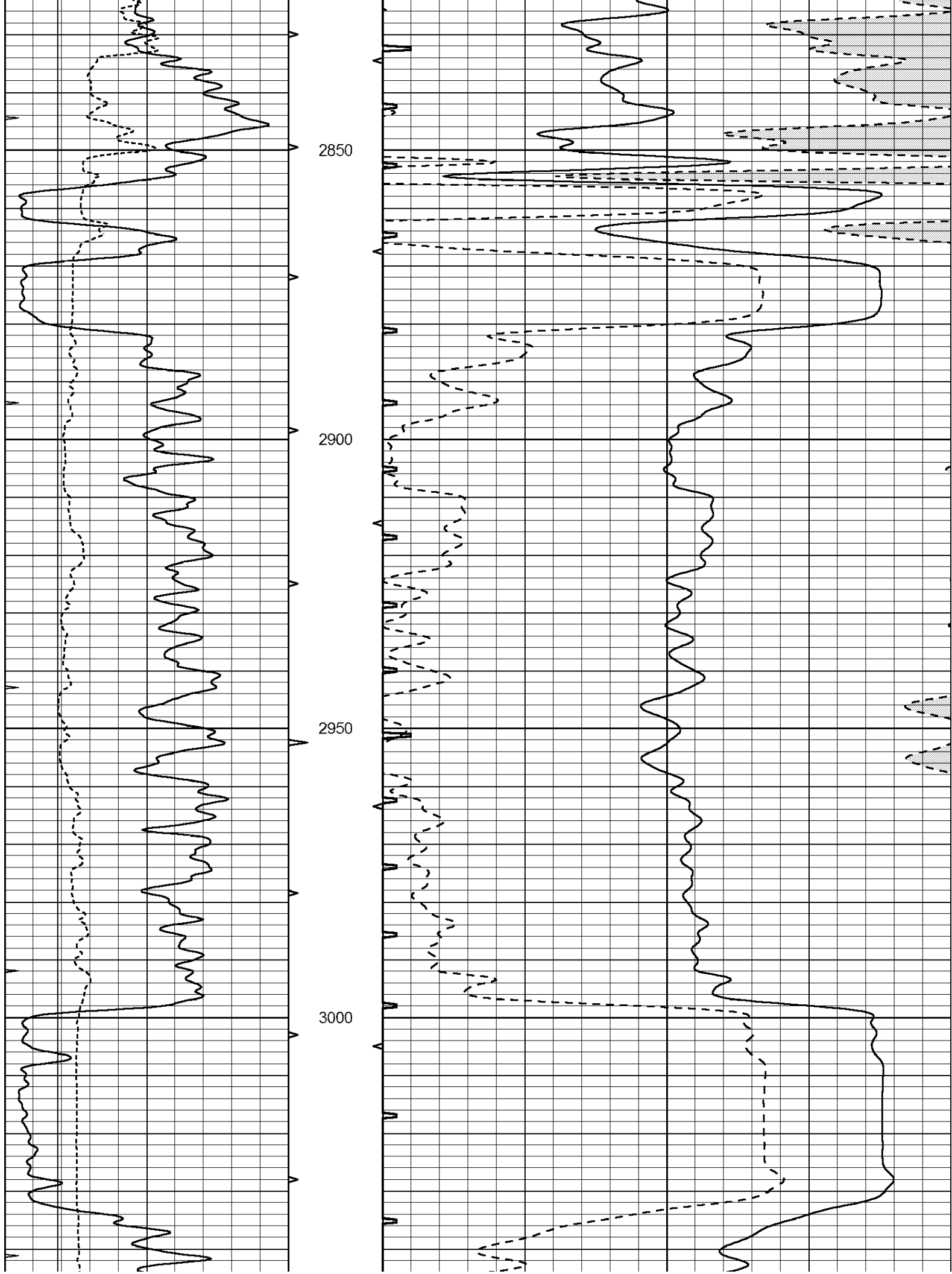


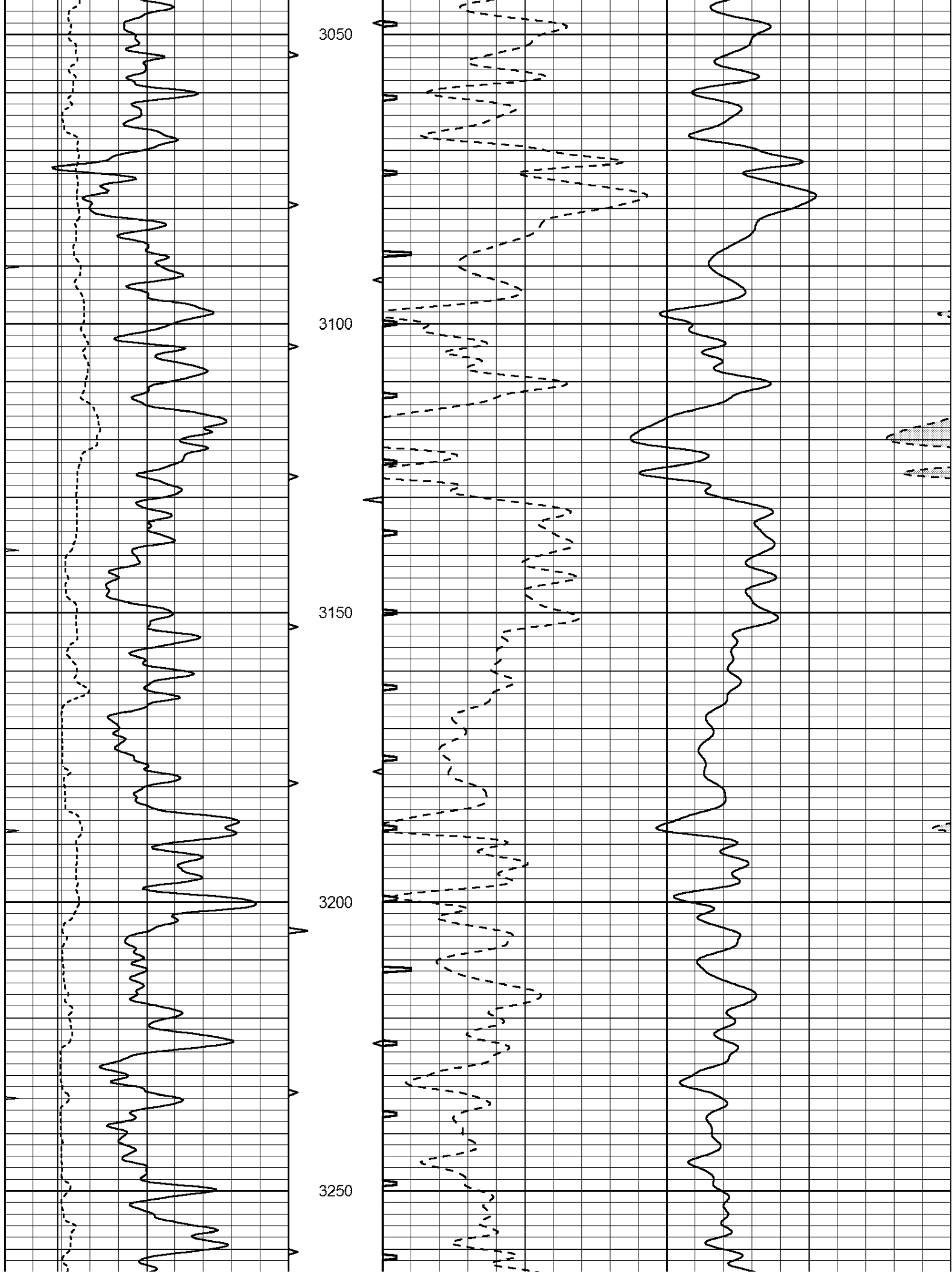


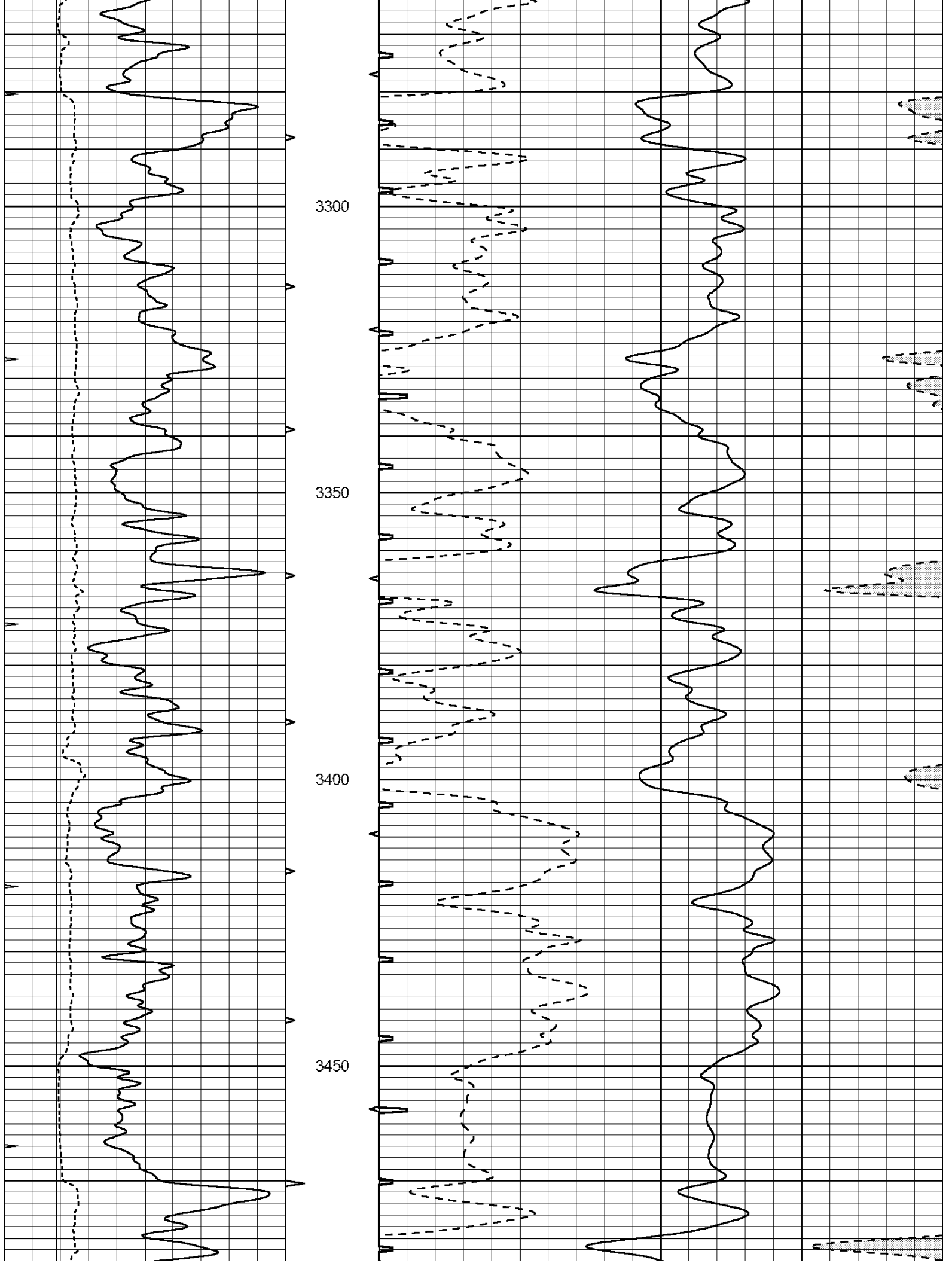


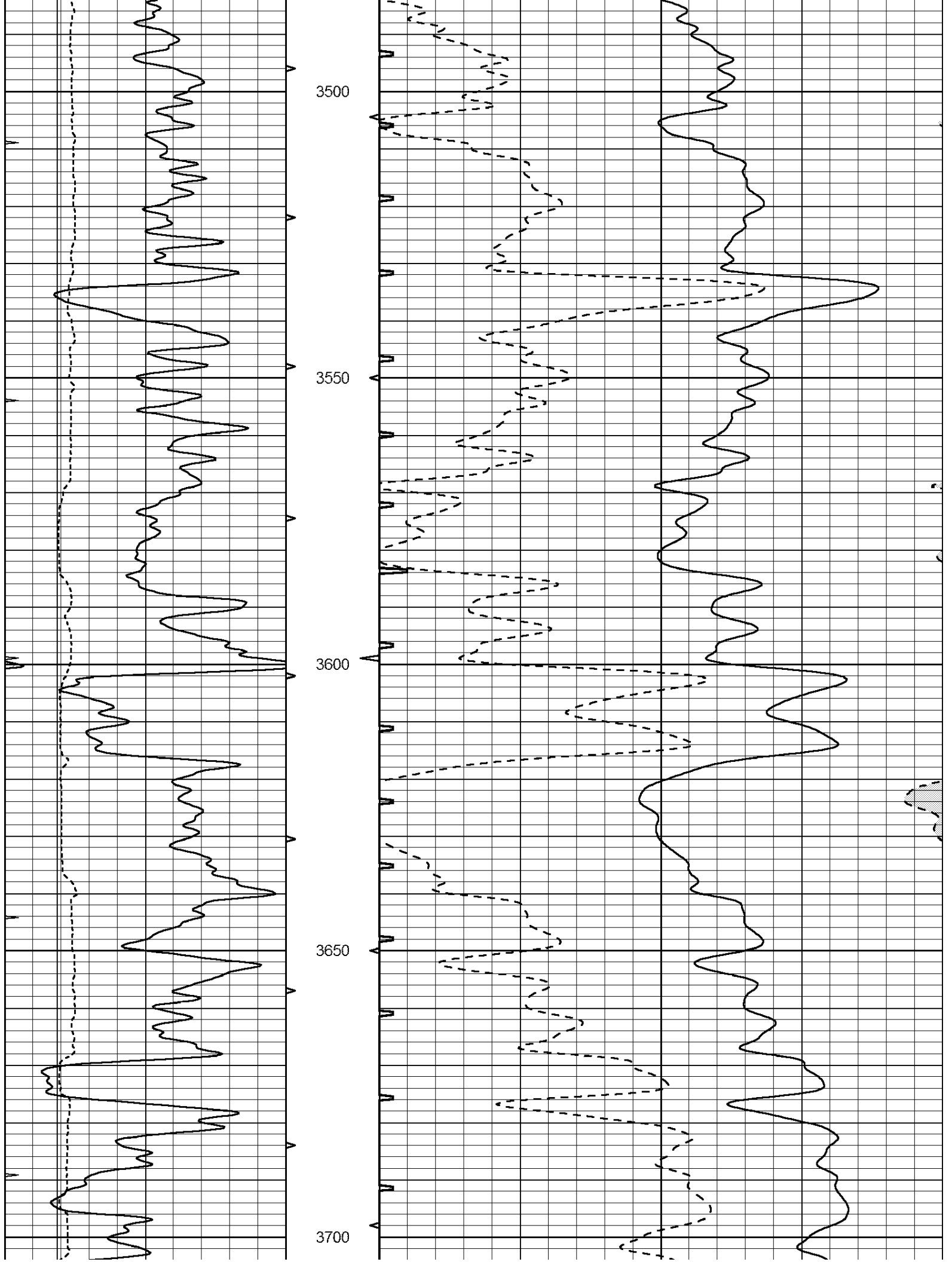


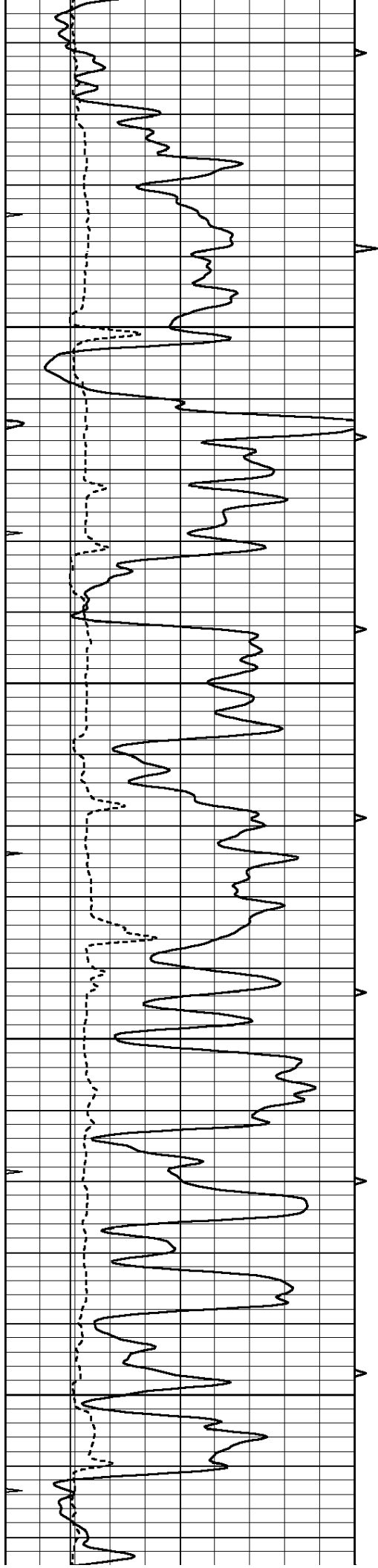










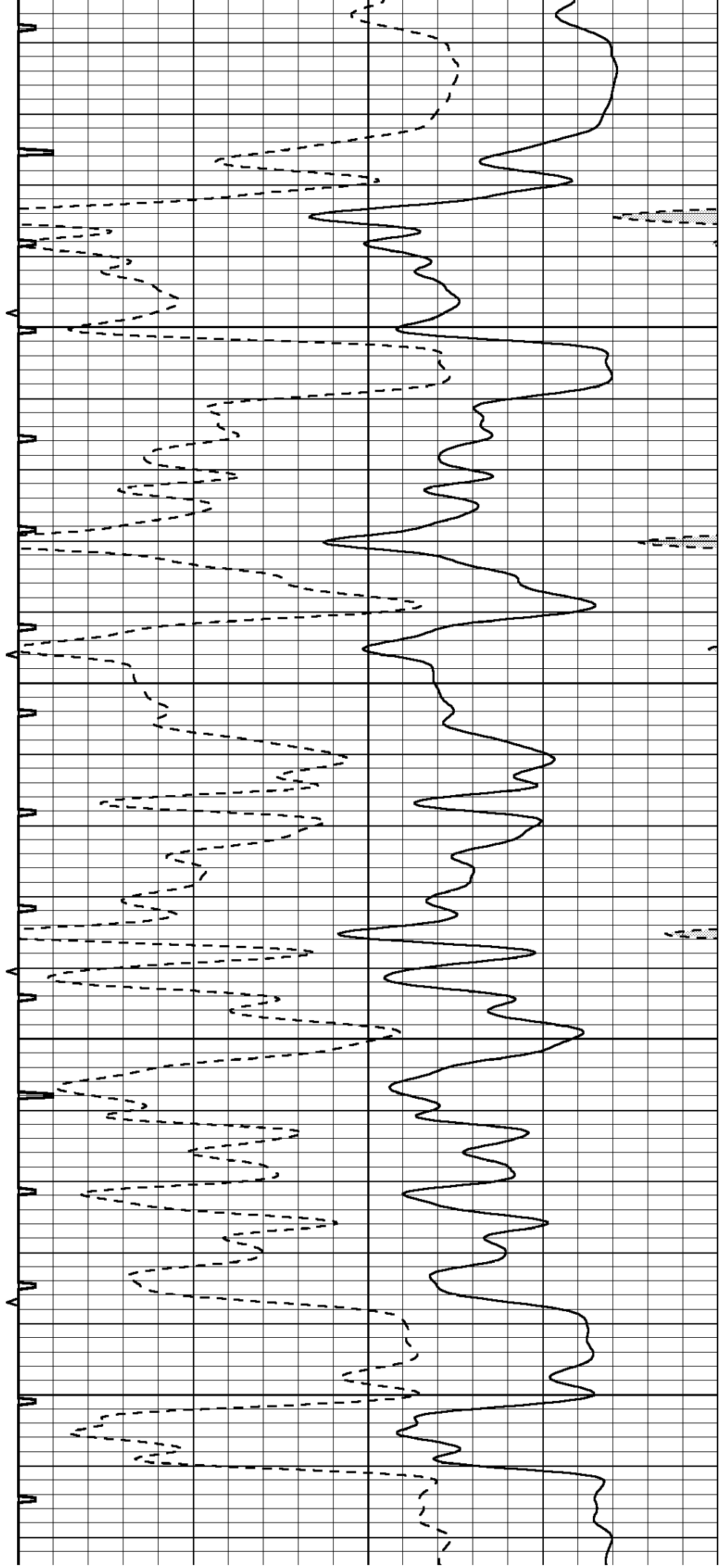


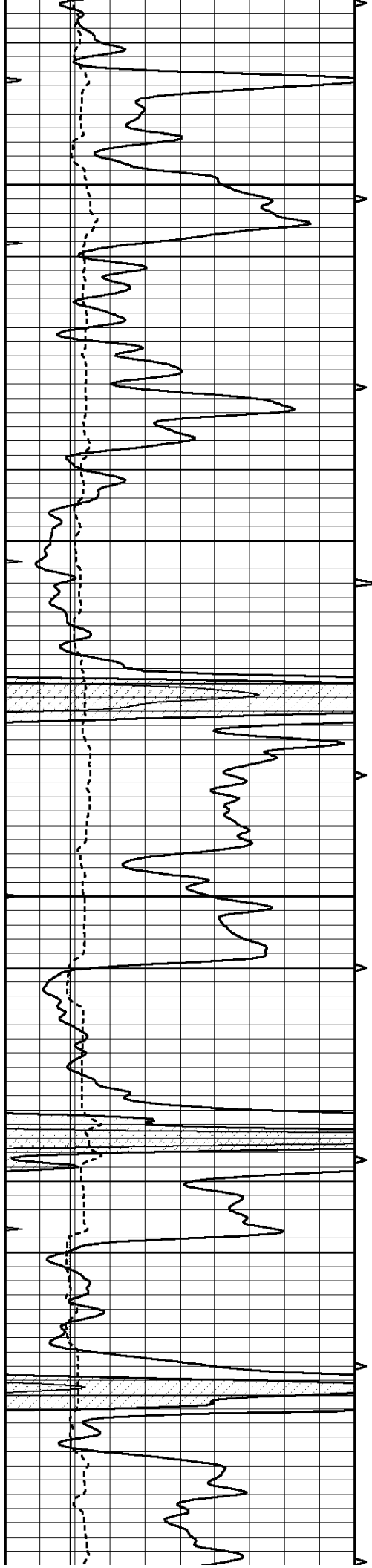
3750

3800

3850

3900



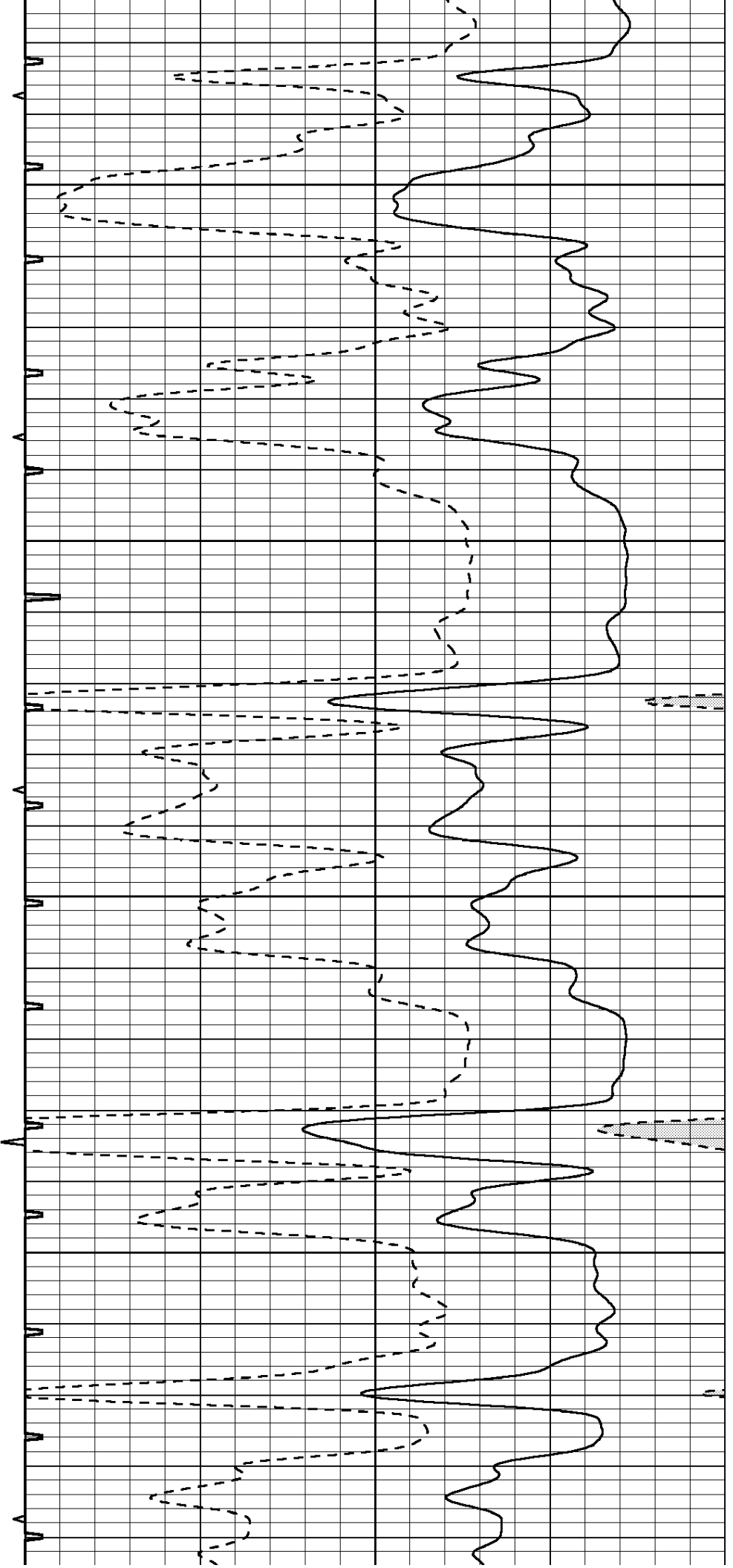


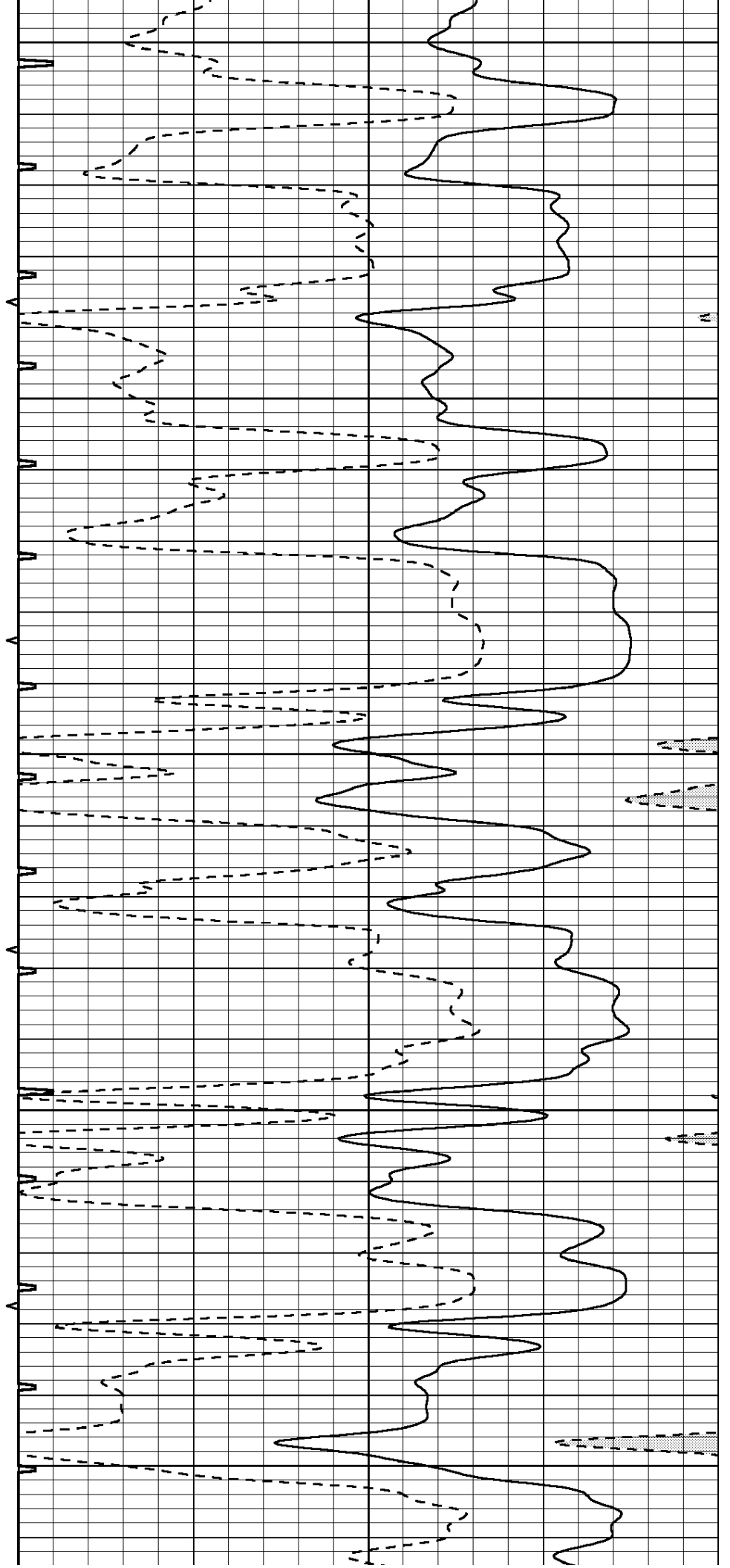
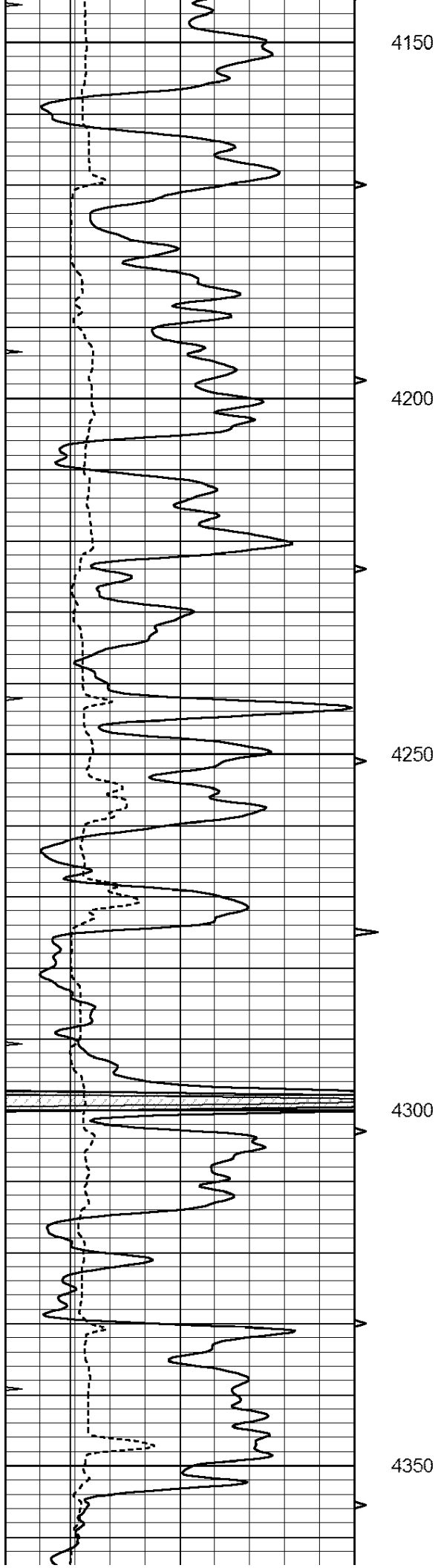
3950

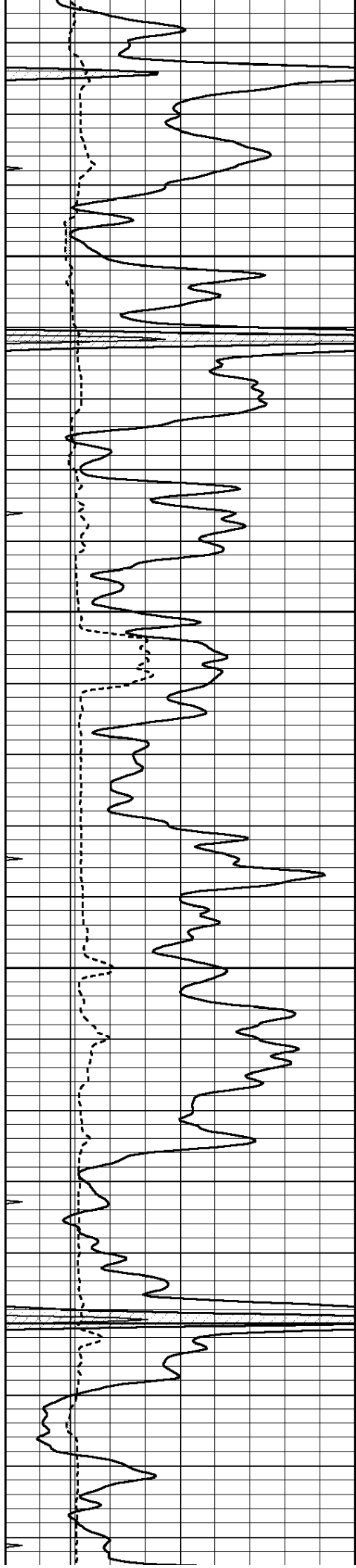
4000

4050

4100





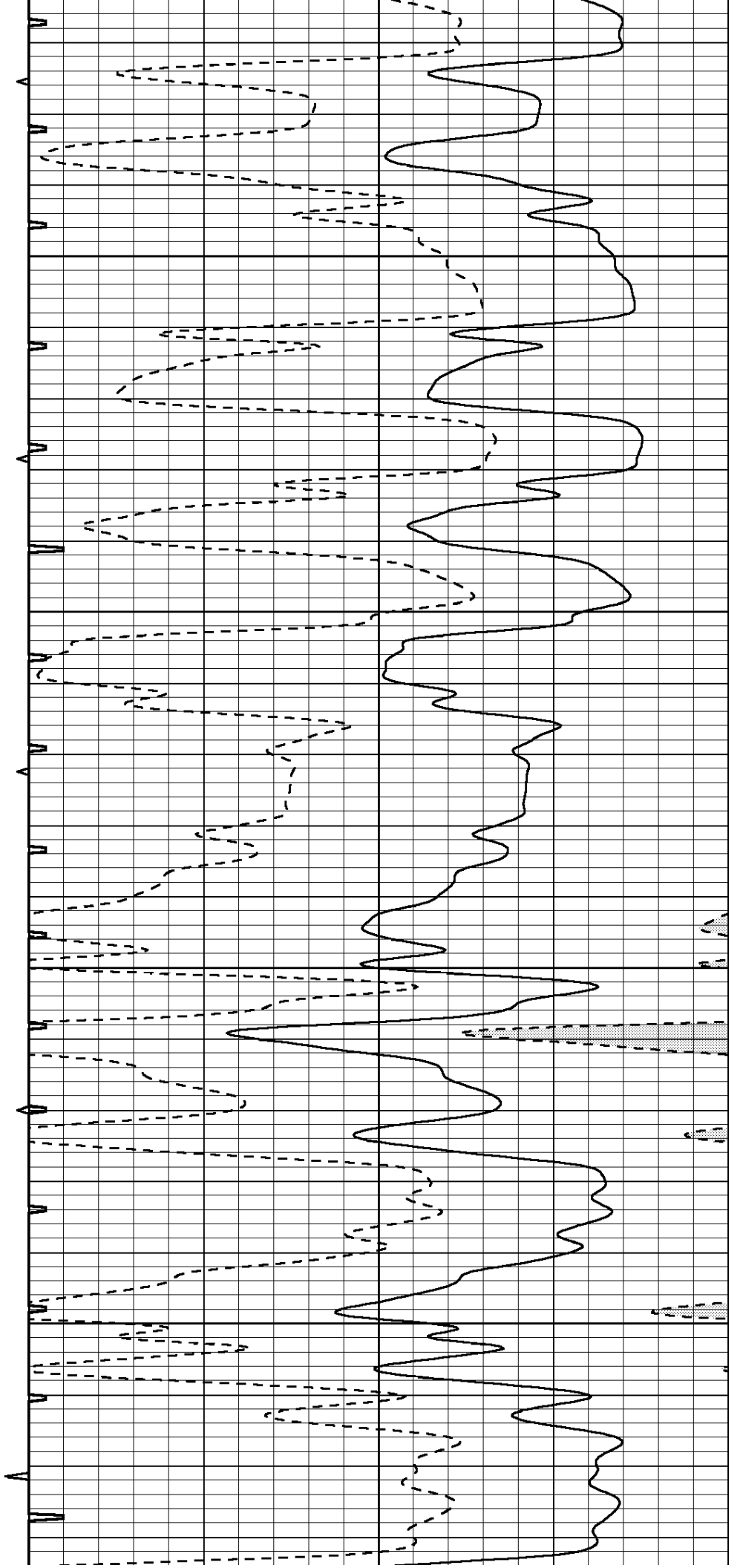


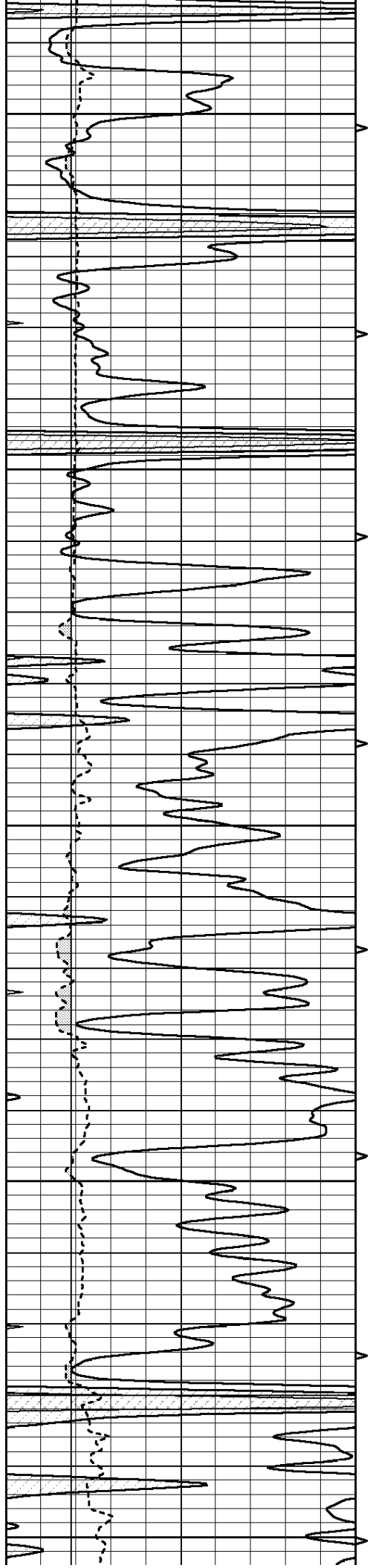
4400

4450

4500

4550





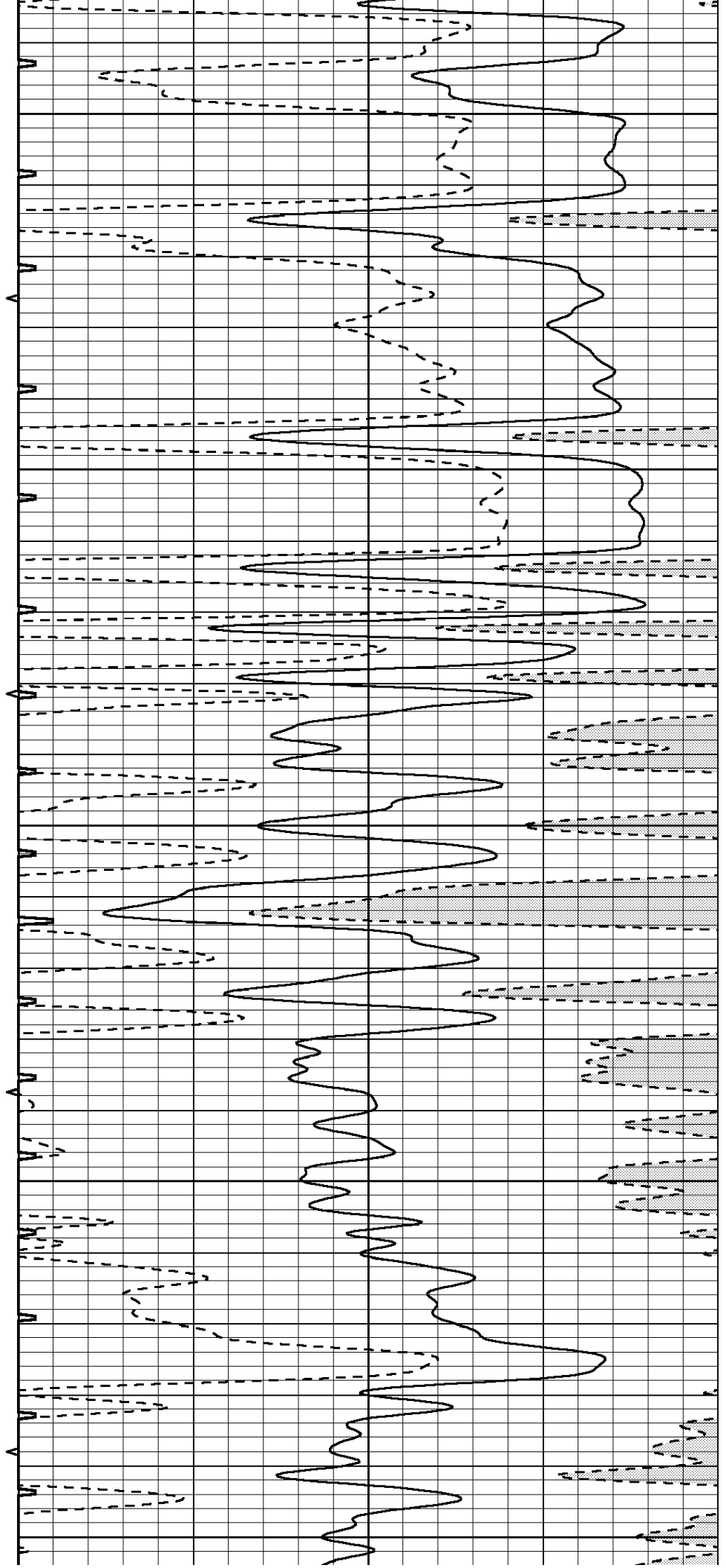
4600

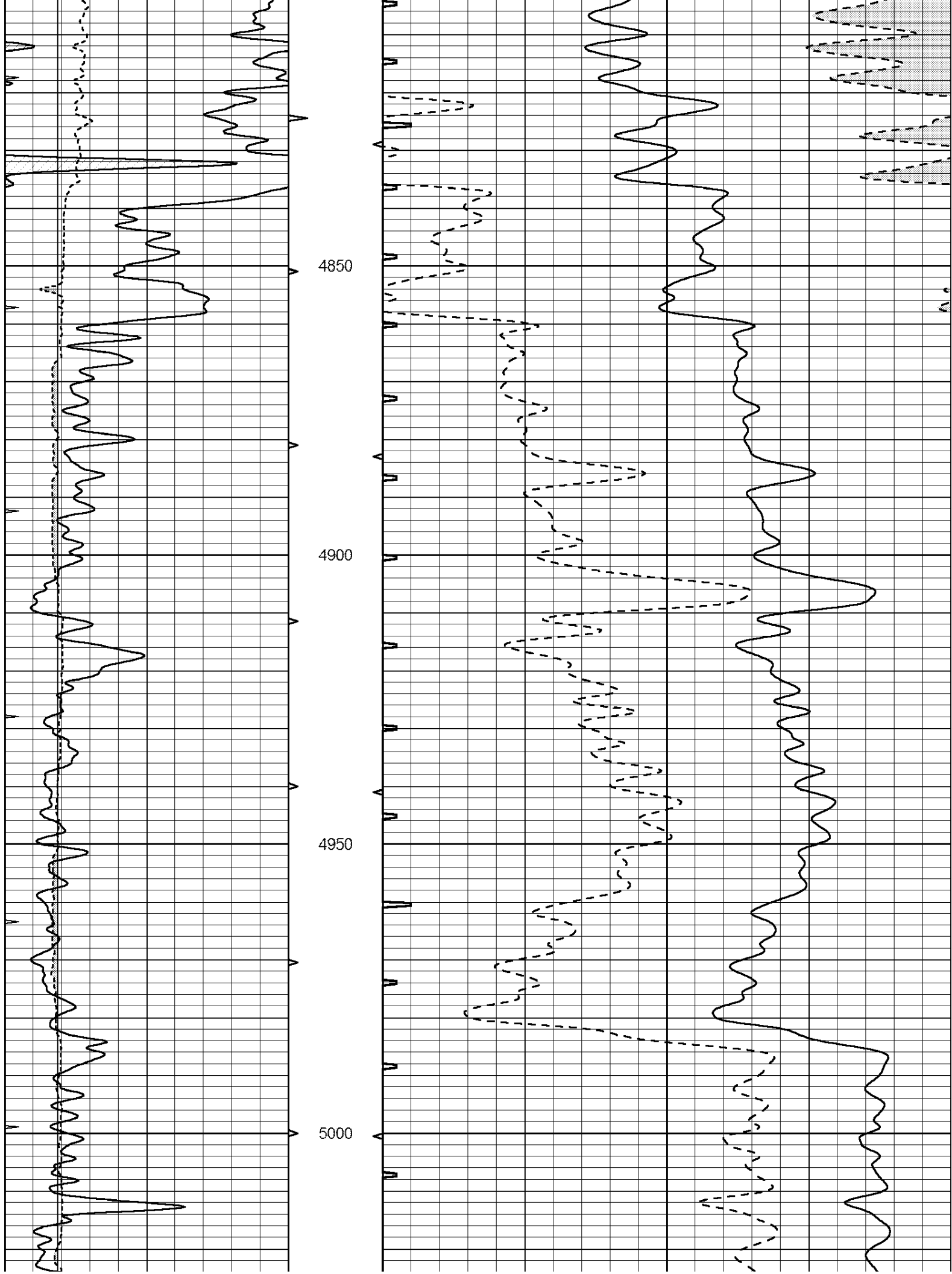
4650

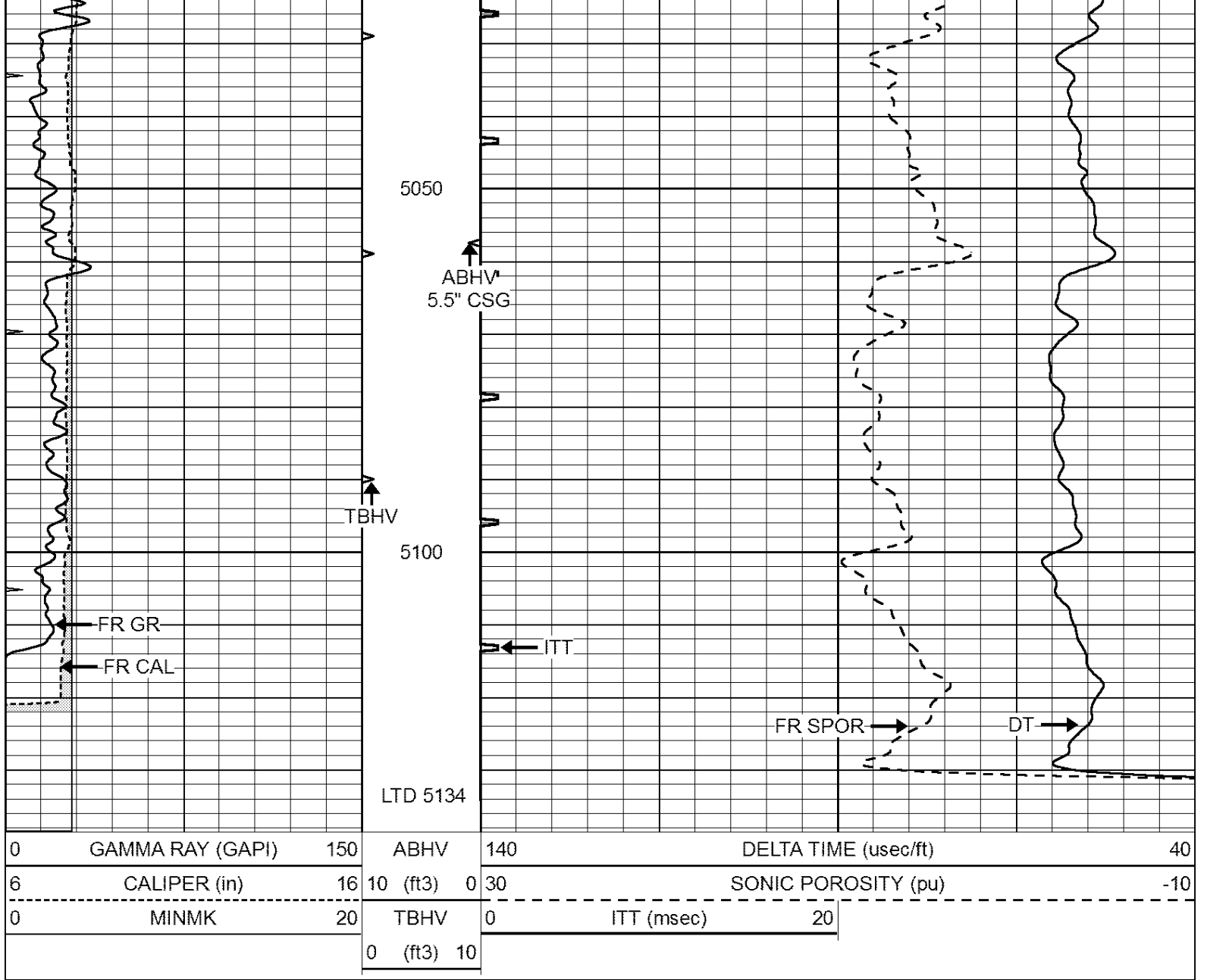
4700

4750

4800







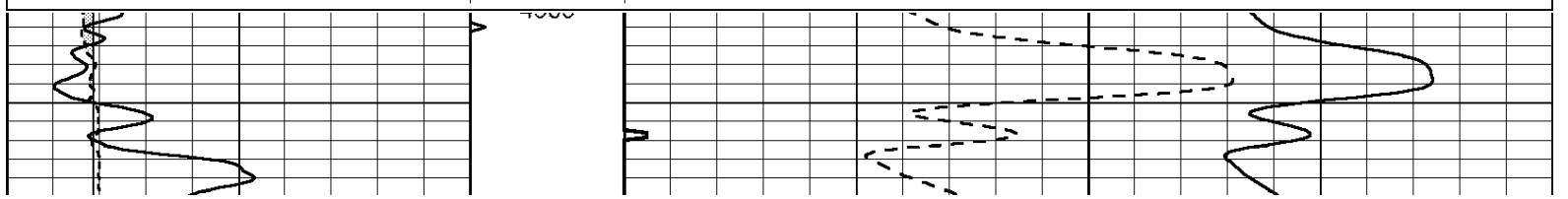
0	GAMMA RAY (GAPI)	150	ABHV	140	DELTA TIME (usec/ft)	40
6	CALIPER (in)	16	10 (ft3)	0 30	SONIC POROSITY (pu)	-10
0	MINMK	20	TBHV	0	ITT (msec)	20
			0 (ft3)	10		

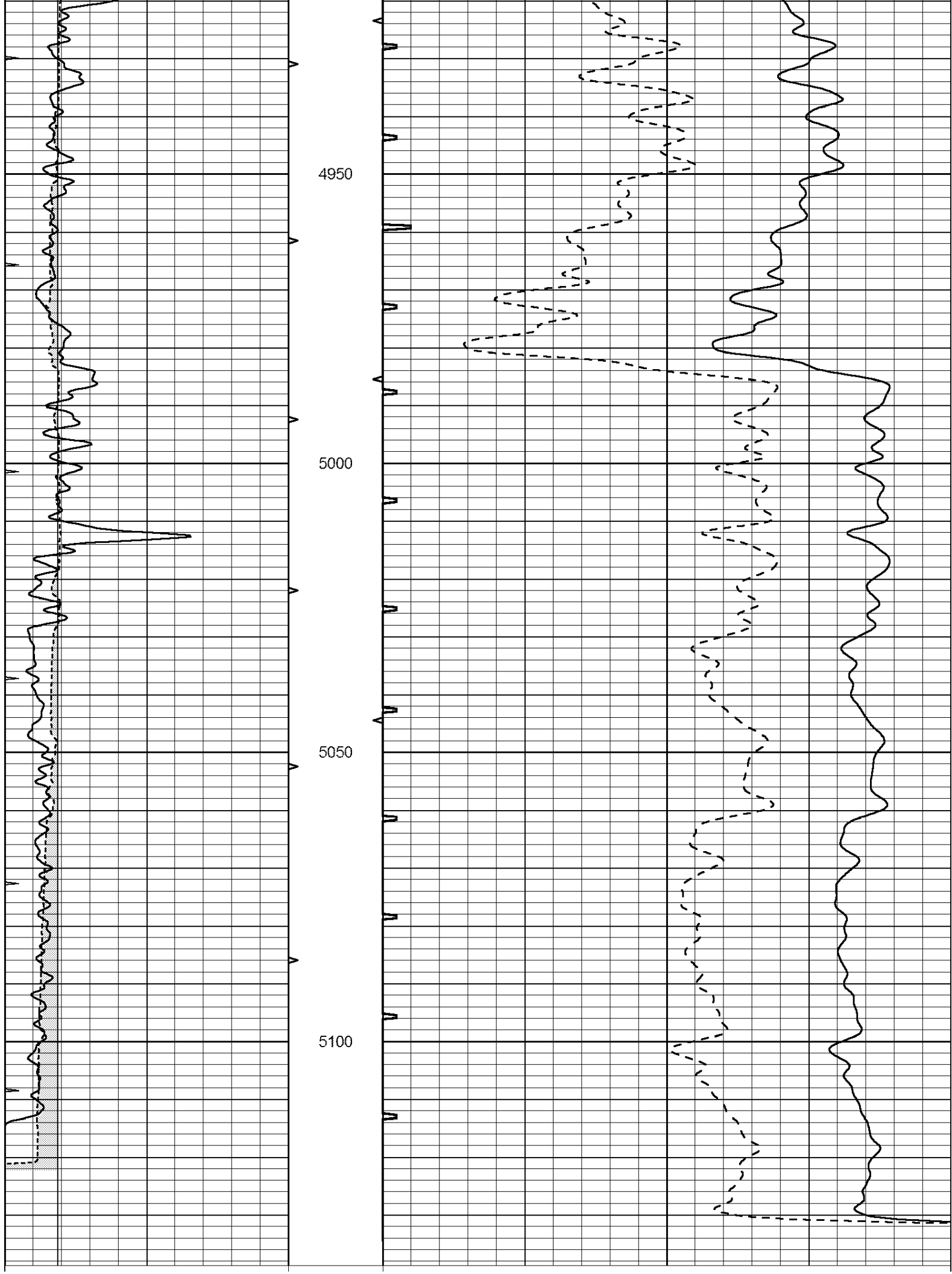


REPEAT SECTION

Database File: 24064ddn.db
 Dataset Pathname: pass5.1
 Presentation Format: _slt
 Dataset Creation: Fri Jul 18 15:59:55 2014 by Calc Open-Cased 090629
 Charted by: Depth in Feet scaled 1:240

0	GAMMA RAY (GAPI)	150	ABHV	140	DELTA TIME (usec/ft)	40
6	CALIPER (in)	16	10 (ft3)	0 30	SONIC POROSITY (pu)	-10
0	MINMK	20	TBHV	0	ITT (msec)	20
			0 (ft3)	10		





0	GAMMA RAY (GAPI)	150	ABHV	140	DELTA TIME (usec/ft)	40
6	CALIPER (in)	16	10 (ft3)	0	30	SONIC POROSITY (pu)
0	MINMK	20	TBHV	0	ITT (msec)	20
			0 (ft3)	10		