



**COMPLETION
& PRODUCTION
SERVICES CO.**

**MICRO
LOG**

Company WHITE EXPLORATION, INC.
Well SPRING VALLEY RANCH 1-14X
Field WILDCAT
County WALLACE
State KANSAS

Company WHITE EXPLORATION, INC.
Well SPRING VALLEY RANCH 1-14X
Field WILDCAT
County WALLACE State KANSAS

Location: API # : 15-199-20420-00-00
2542' FNL & 791' FEL
SE - SW - SE - NE
SEC 14 TWP 14S RGE 41W
Permanent Datum GROUND LEVEL Elevation 3703
Log Measured From KELLY BUSHING 11' A.G.L.
Drilling Measured From KELLY BUSHING
Elevation
K.B. 3714
D.F. 3712
G.L. 3703

Date	8/27/14		
Run Number	TWO		
Depth Driller	5300		
Depth Logger	5302		
Bottom Logged Interval	5284		
Top Log Interval	3800		
Casing Driller	13 3/8" @ 335		
Casing Logger	333		
Bit Size	7.875		
Type Fluid in Hole	CHEMICAL MUD	CHLORIDES 2,700 PPM	
Density / Viscosity	9.2/55		
pH / Fluid Loss	9.0/7.2		
Source of Sample	FLOWLINE		
Rm @ Meas. Temp	0.75 @ 90F		
Rmt @ Meas. Temp	0.56 @ 90F		
Rmc @ Meas. Temp	0.90 @ 90F		
Source of Rmf / Rmc	MEASURED		
Rm @ BHT	0.53 @ 128F		
Time Circulation Stopped	2 HOURS		
Time Logger on Bottom			
Maximum Recorded Temperature	128F		
Equipment Number	4010		
Location	HAYS, KS.		
Recorded By	IAN MABB		
Witnessed By	ANDY WHITE		

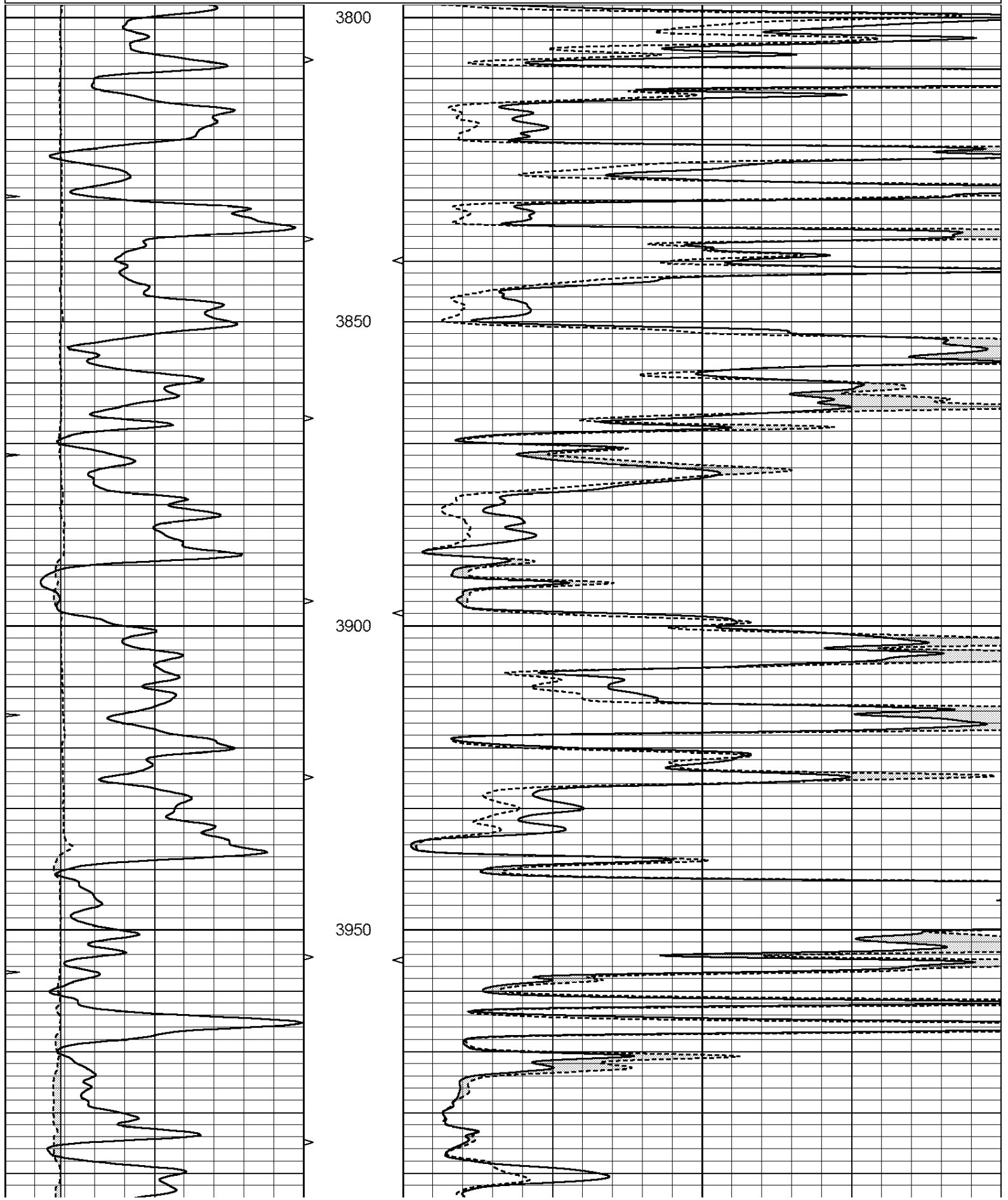
<<< Fold Here >>>

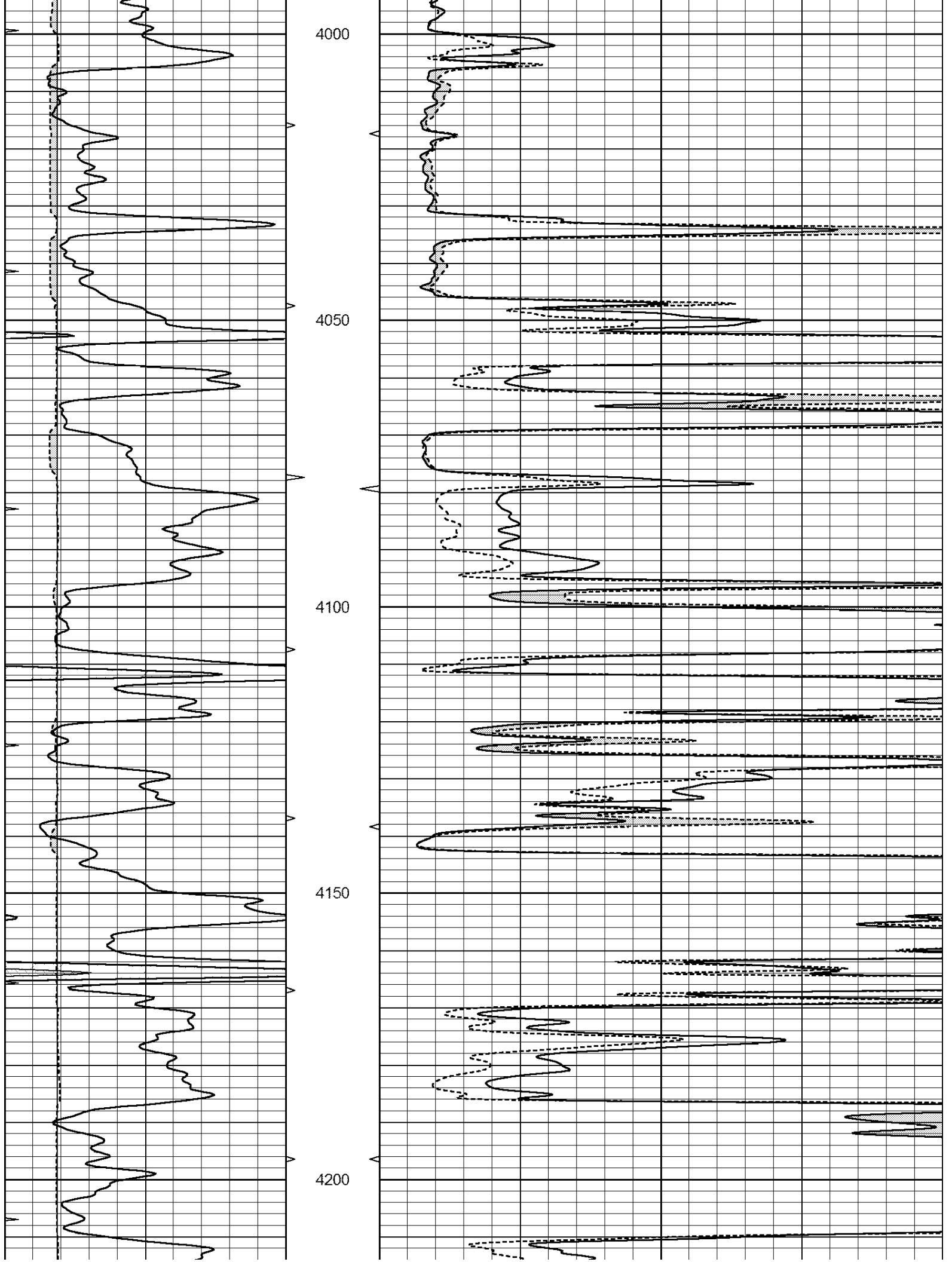
All interpretations are opinions based on inferences from electrical or other measurements and we cannot and do not guarantee the accuracy or correctness of any interpretation, and we shall not, except in the case of gross or willful negligence on our part, be liable or responsible for any loss, costs, damages, or expenses incurred or sustained by anyone resulting from any interpretation made by any of our officers, agents or employees. These interpretations are also subject to our general terms and conditions set out in our current Price Schedule.

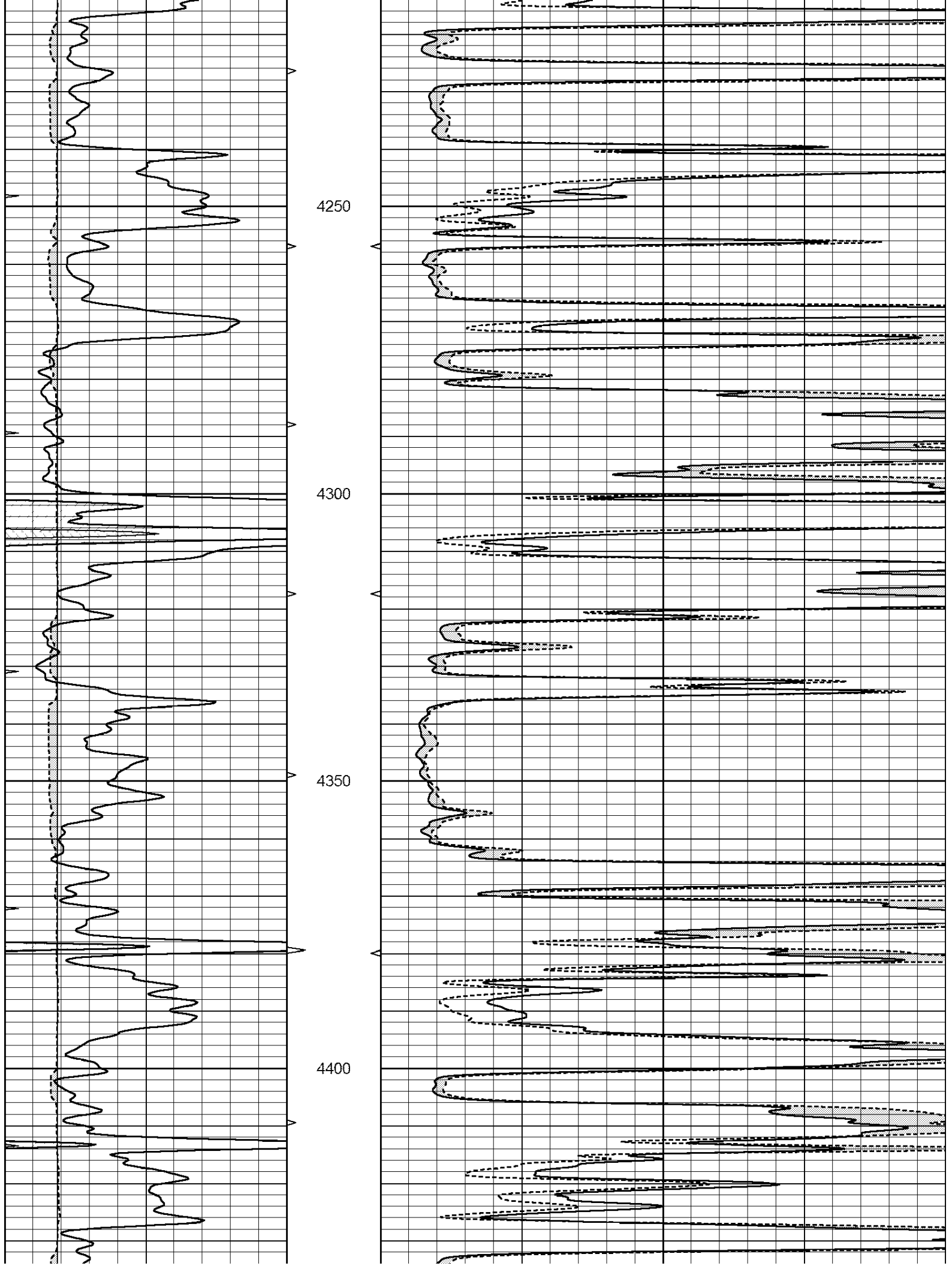
Comments

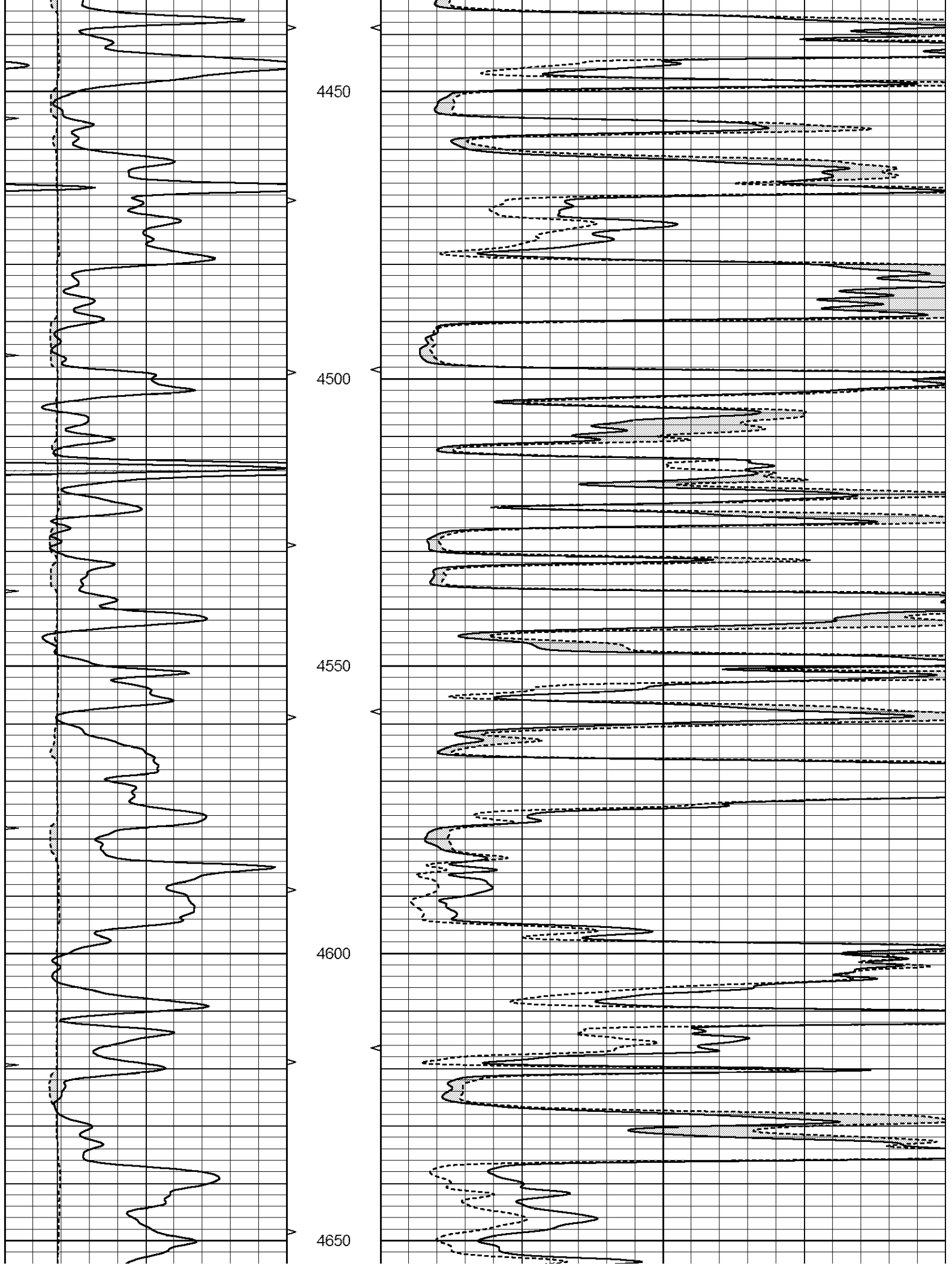
NABORS COMPLETION & PRODUCTION SERVICES
785-628-6395
THANK YOU FOR YOUR BUSINESS
SHARON SPRINGS, KS. - 4 MILES SOUTH TO JACKRABBIT RD. - WEST 4 1/2 - NORTH INTO

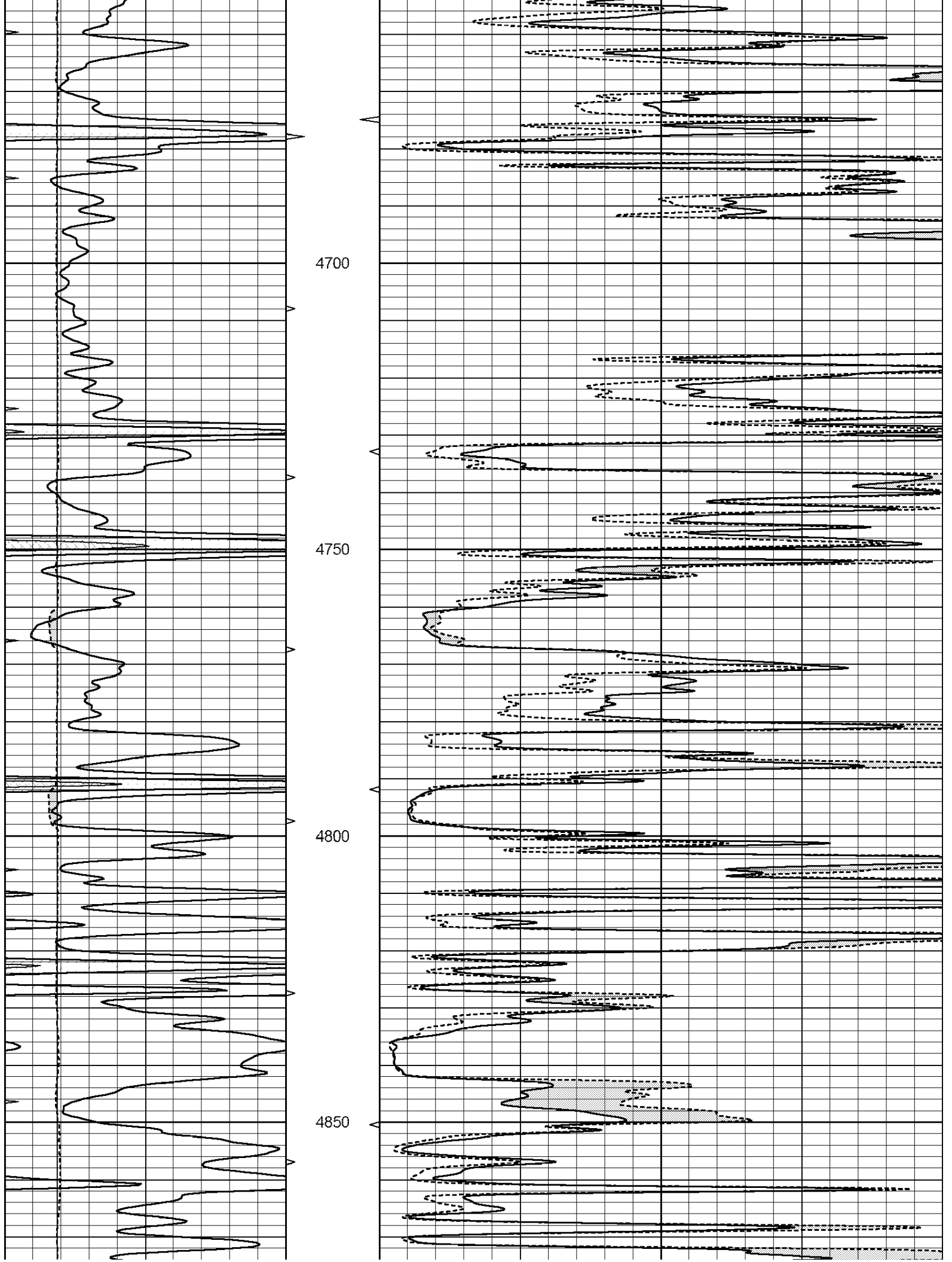
0	GAMMA RAY (GAPI)	150	ABHV	0	MEL1.5 (Ohm-m)	40
6	CALIPER (in)	16	10 (ft3)	0	MEL2.0 (Ohm-m)	40
0	MINMK	20	TBHV			
			0 (ft3)	10		

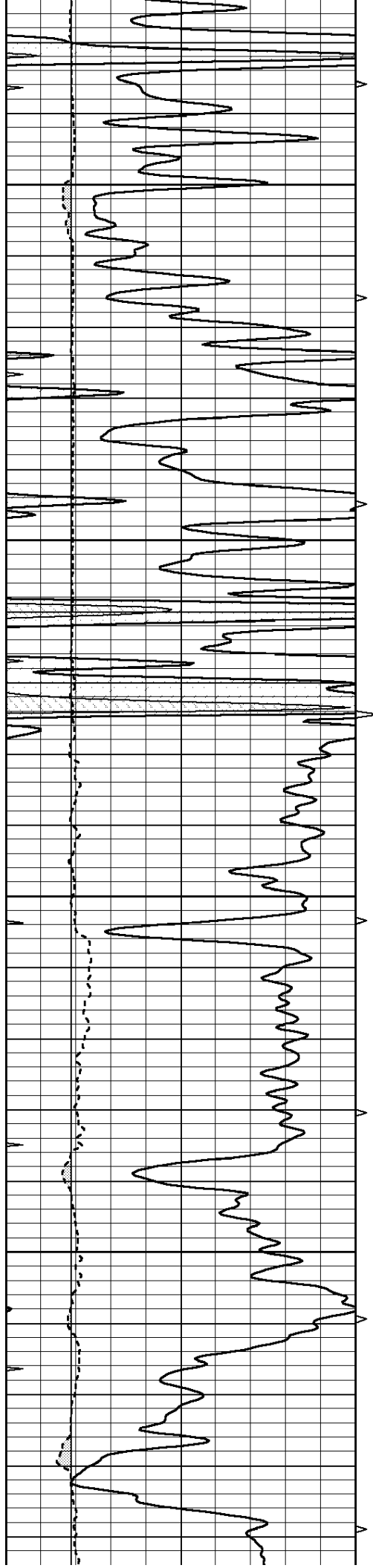










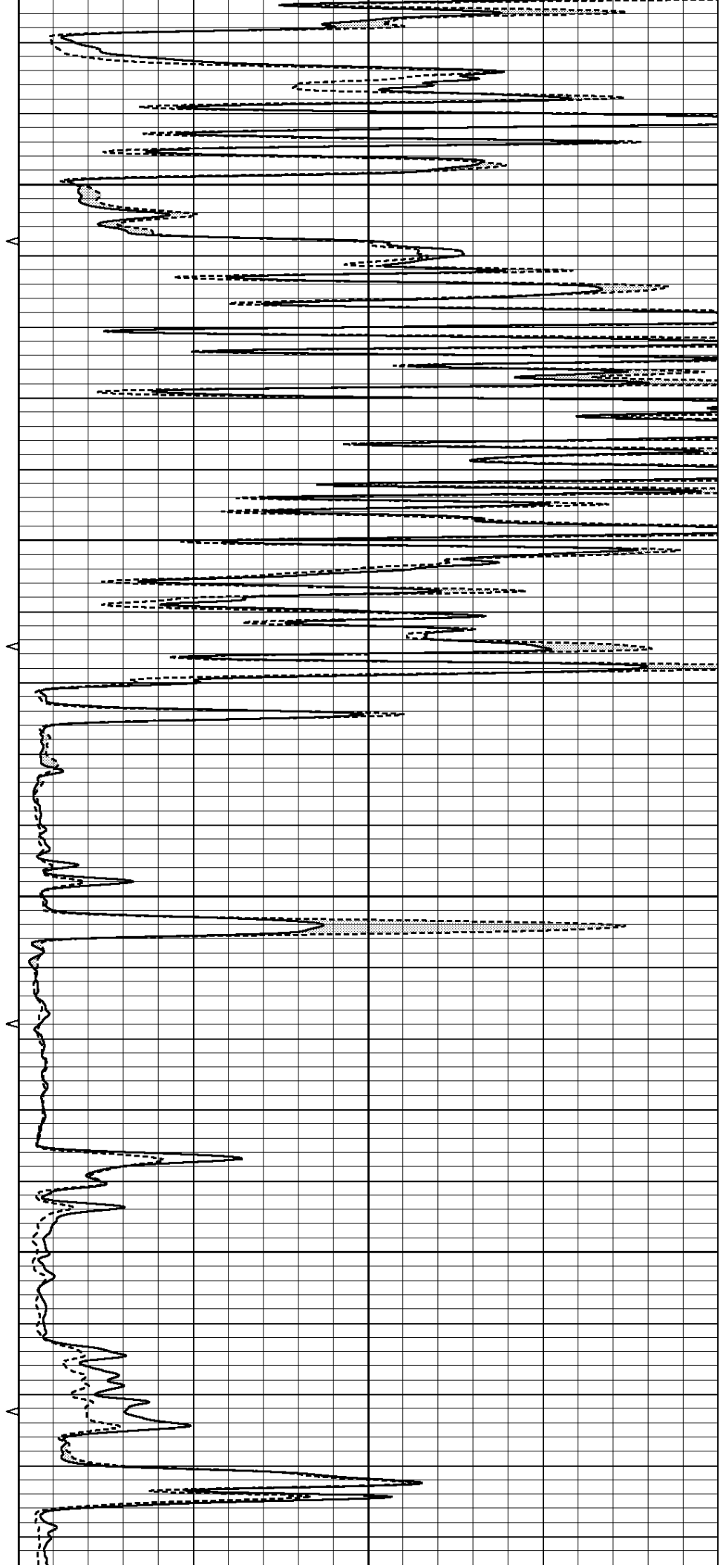


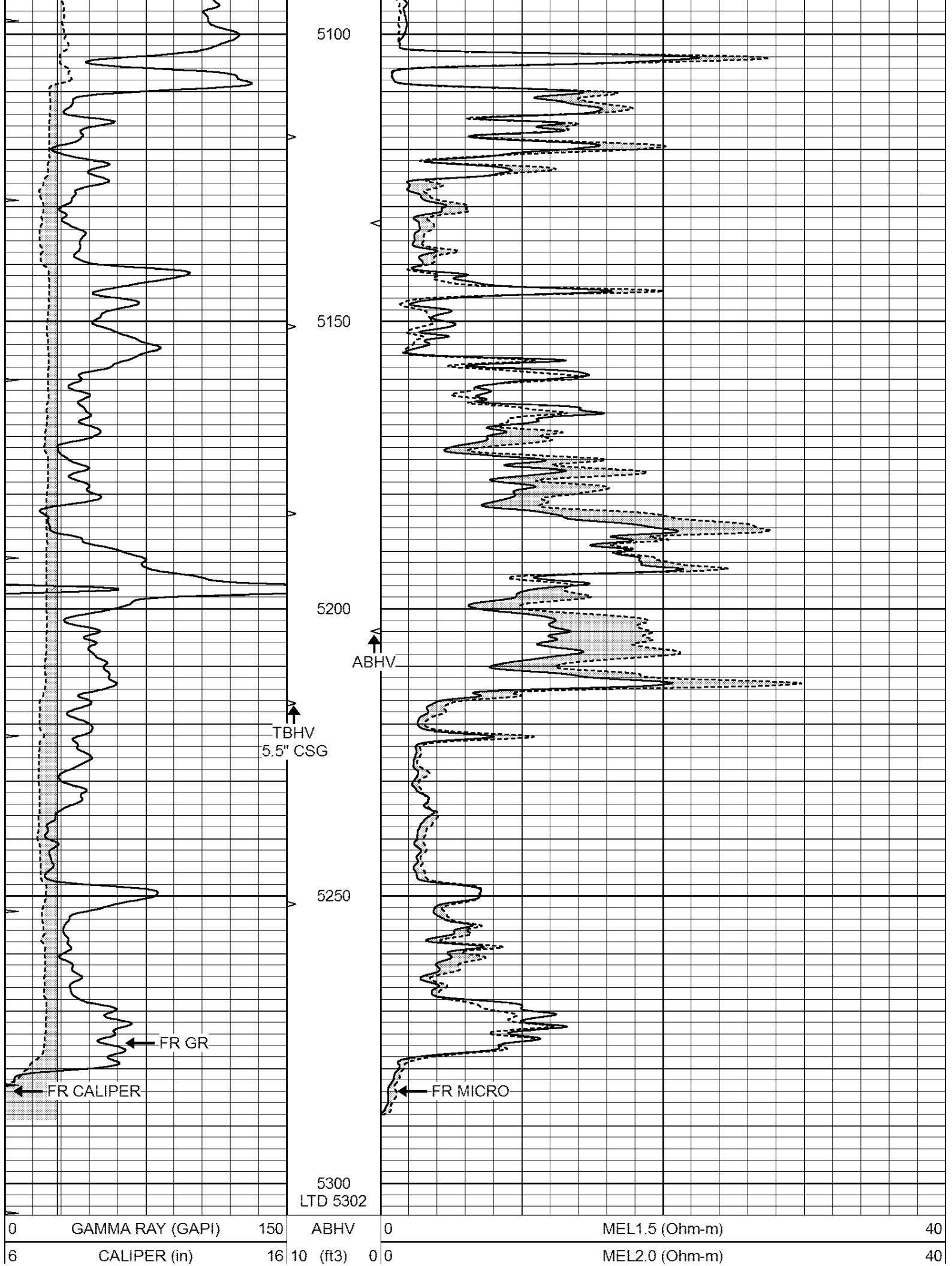
4900

4950

5000

5050

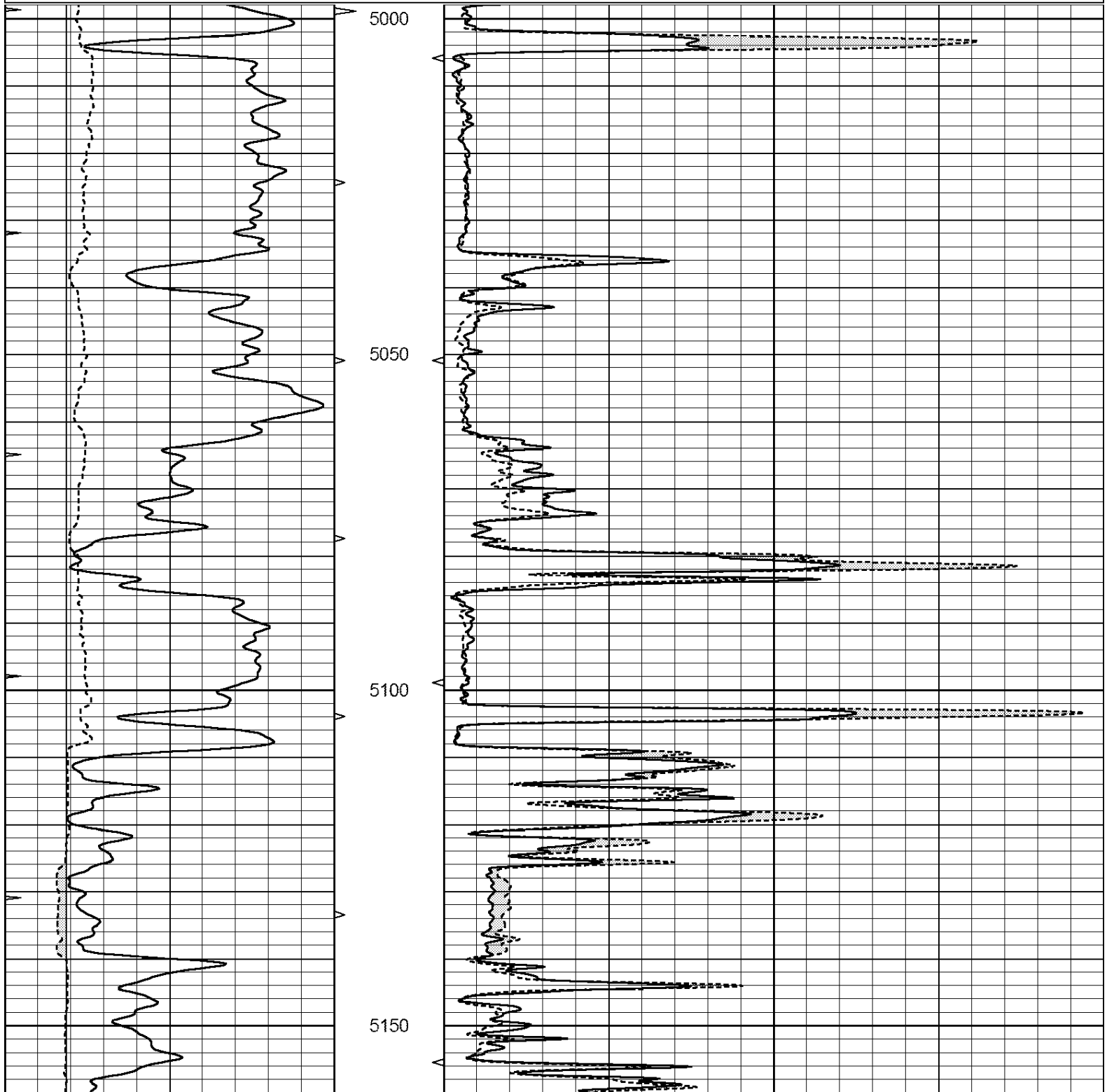


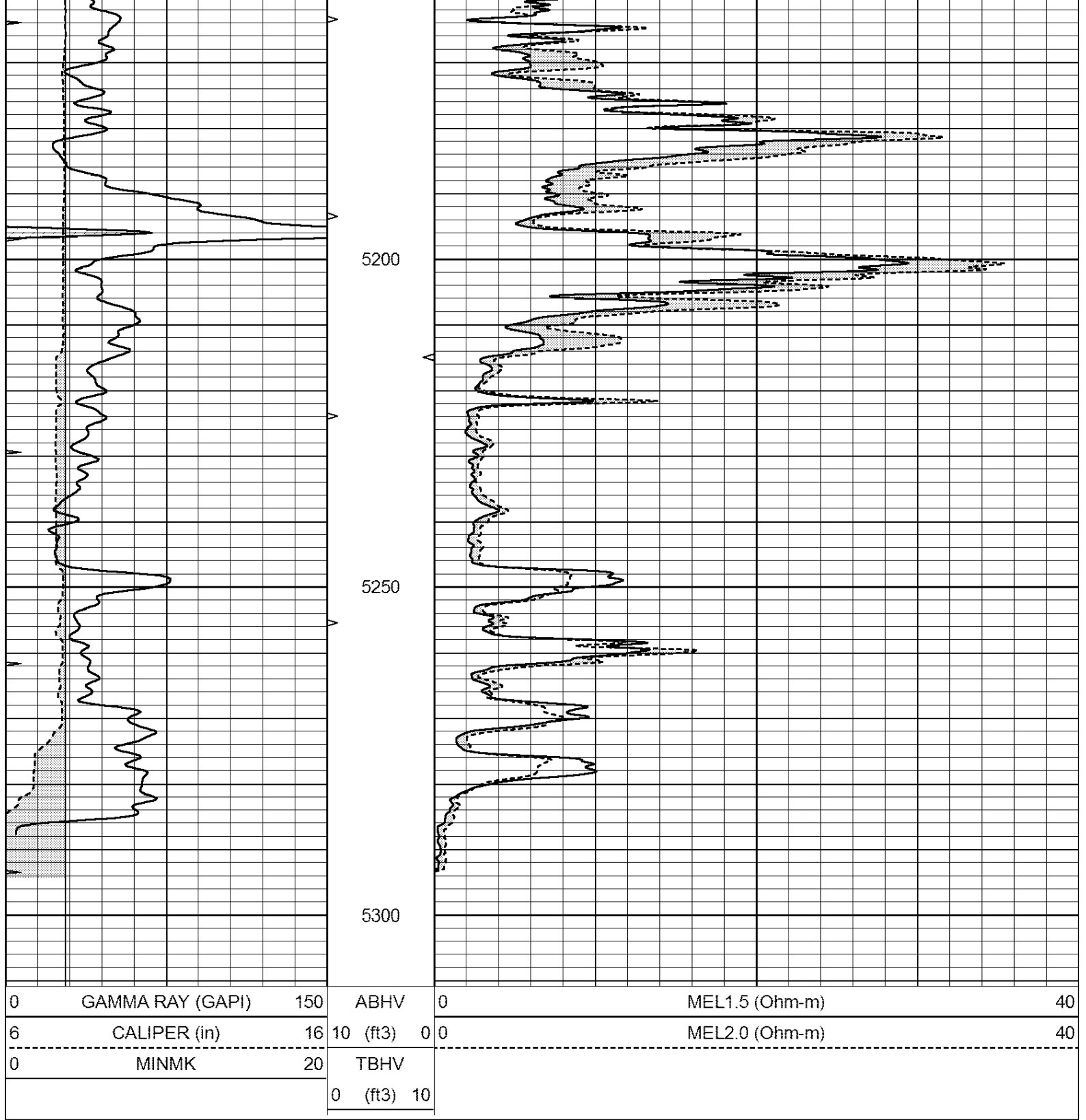


0	MINMK	20	TBHV	
			0 (ft3) 10	

Database File: 25859pe.db
 Dataset Pathname: pass5.2
 Presentation Format: _micro
 Dataset Creation: Wed Aug 27 22:05:36 2014 by Calc Open-Cased 090629
 Charted by: Depth in Feet scaled 1:240

0	GAMMA RAY (GAPI)	150	ABHV	0	MEL1.5 (Ohm-m)	40
6	CALIPER (in)	16	10 (ft3)	0	MEL2.0 (Ohm-m)	40
0	MINMK	20	TBHV			
			0 (ft3) 10			





Calibration Report

Database File: 25859pe.db
 Dataset Pathname: pass6.9.1
 Dataset Creation: Wed Aug 27 22:58:39 2014 by Calc Open-Cased 090629

MICRO Calibration Report

Serial Number: MICRO3
 Tool Model: PROBE
 Performed: Thu Nov 17 03:06:31 2011

Caliper Calibration: Gain=3.916 Offset=-9.471

References	Low Cal 8.000	High Cal 14.000
Readings	4.257	5.789
1.5" Calibration:	Gain=140.000	Offset=-0.700
References	Low Cal 0.000	High Cal 20.000
Readings	0.004	0.228
2" Calibration:	Gain=120.553	Offset=-1.220
References	Low Cal 0.000	High Cal 20.000
Readings	0.005	0.175
Gamma Ray Calibration Report		
Serial Number:	GR6	
Tool Model:	OPEN	
Performed:	Sun Aug 17 15:23:09 2014	
Calibrator Value:	150.0	GAPI
Background Reading:	0.0	cps
Calibrator Reading:	276.0	cps
Sensitivity:	0.7000	GAPI/cps