



**COMPLETION
& PRODUCTION
SERVICES CO.**

**SONIC
LOG**

Company WHITE EXPLORATION, INC.
Well SPRING VALLEY RANCH 1-14X
Field WILDCAT
County WALLACE
State KANSAS

Company WHITE EXPLORATION, INC.
Well SPRING VALLEY RANCH 1-14X
Field WILDCAT
County WALLACE State KANSAS

Location: API # : 15-199-20420-00-00
2542' FNL & 791' FEL
SE - SW - SE - NE
SEC 14 TWP 14S RGE 41W
Permanent Datum GROUND LEVEL Elevation 3703
Log Measured From KELLY BUSHING 11' A.G.L.
Drilling Measured From KELLY BUSHING
Elevation
C/NL/CDL/PE
DIL/MEL
K.B. 3714
D.F. 3712
G.L. 3703

Date	8/27/14		
Run Number	TWO		
Depth Driller	5300		
Depth Logger	5302		
Bottom Logged Interval	5292		
Top Log Interval	3800		
Casing Driller	13 3/8" @ 335		
Casing Logger	300		
Bit Size	7.875		
Type Fluid in Hole	CHEMICAL MUD	CHLORIDES 2,700 PPM	
Density / Viscosity	9.2/55		
pH / Fluid Loss	9.0/7.2		
Source of Sample	FLOWLINE		
Rm @ Meas. Temp	0.75 @ 90F		
Rmt @ Meas. Temp	0.56 @ 90F		
Rmc @ Meas. Temp	0.90 @ 90F		
Source of Rmf / Rmc	MEASURED		
Rm @ BHT	0.53 @ 128F		
Time Circulation Stopped	2 HOURS		
Time Logger on Bottom			
Maximum Recorded Temperature	128F		
Equipment Number	4010		
Location	HAYS, KS.		
Recorded By	IAN MABB		
Witnessed By	ANDY WHITE		

<<< Fold Here >>>

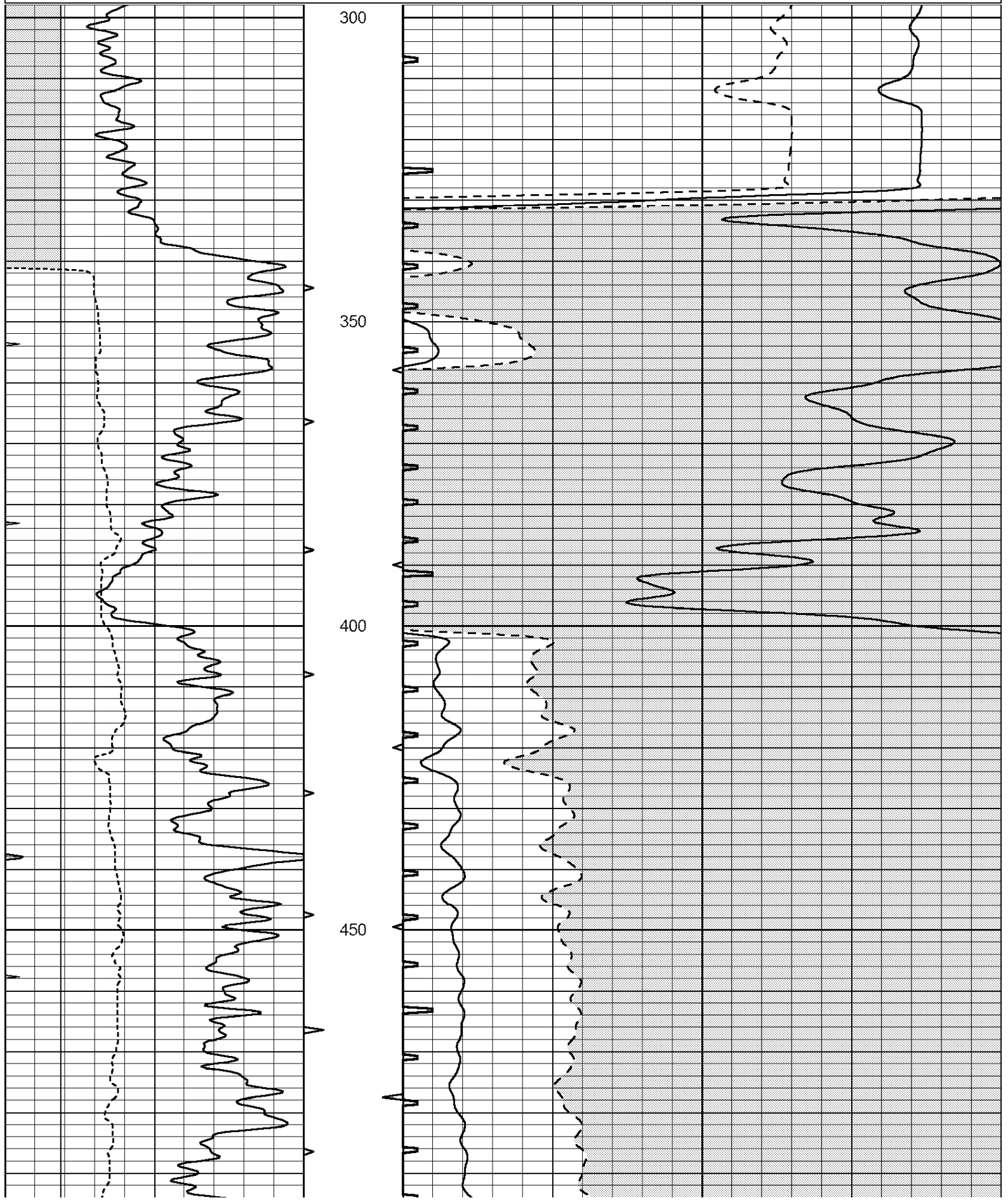
All interpretations are opinions based on inferences from electrical or other measurements and we cannot and do not guarantee the accuracy or correctness of any interpretation, and we shall not, except in the case of gross or willful negligence on our part, be liable or responsible for any loss, costs, damages, or expenses incurred or sustained by anyone resulting from any interpretation made by any of our officers, agents or employees. These interpretations are also subject to our general terms and conditions set out in our current Price Schedule.

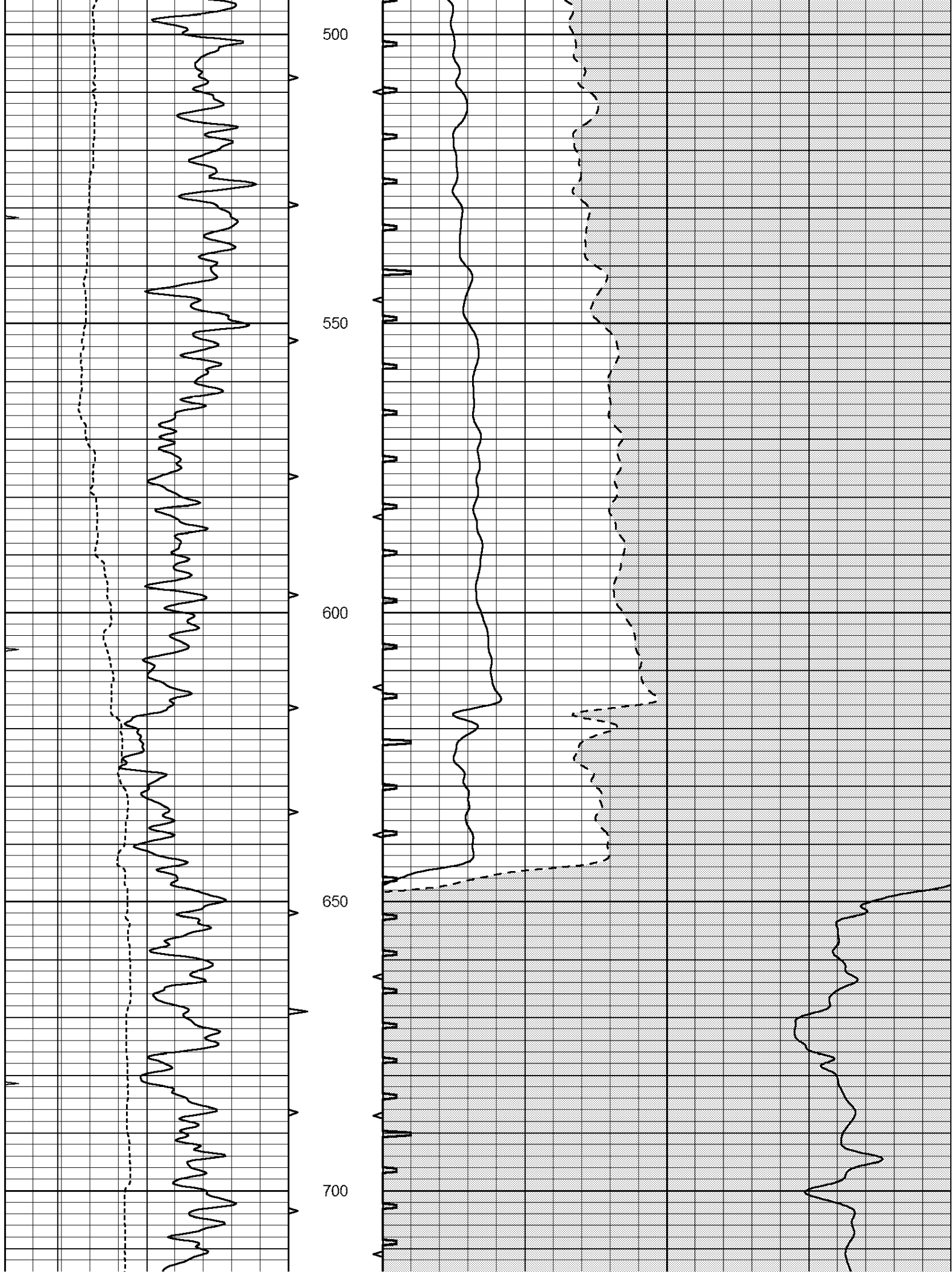
Comments

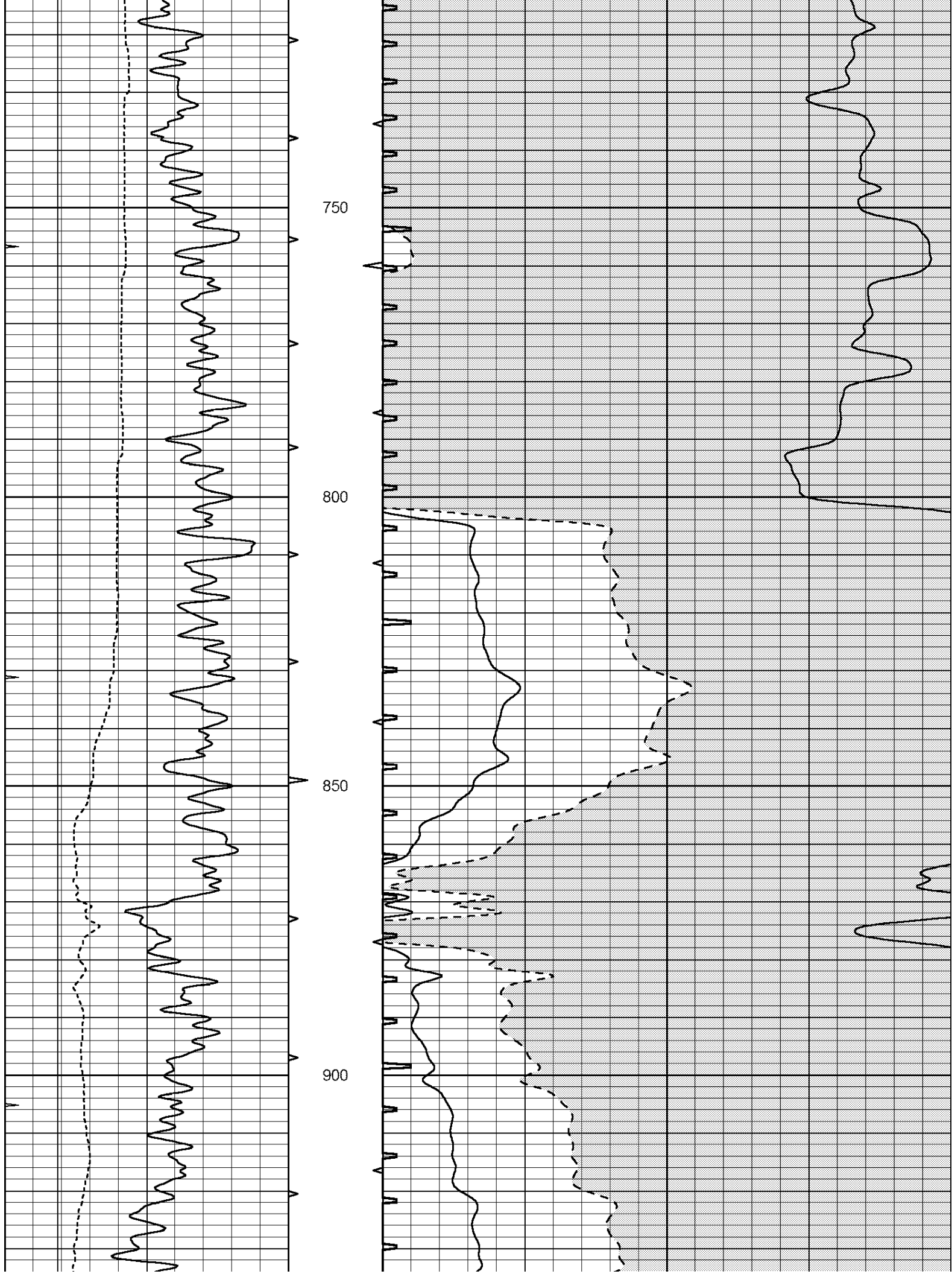
NABORS COMPLETION & PRODUCTION SERVICES
785-628-6395
THANK YOU FOR YOUR BUSINESS
SHARON SPRINGS, KS. - 4 MILES SOUTH TO JACKRABBIT RD. - WEST 4 1/2 - NORTH INTO

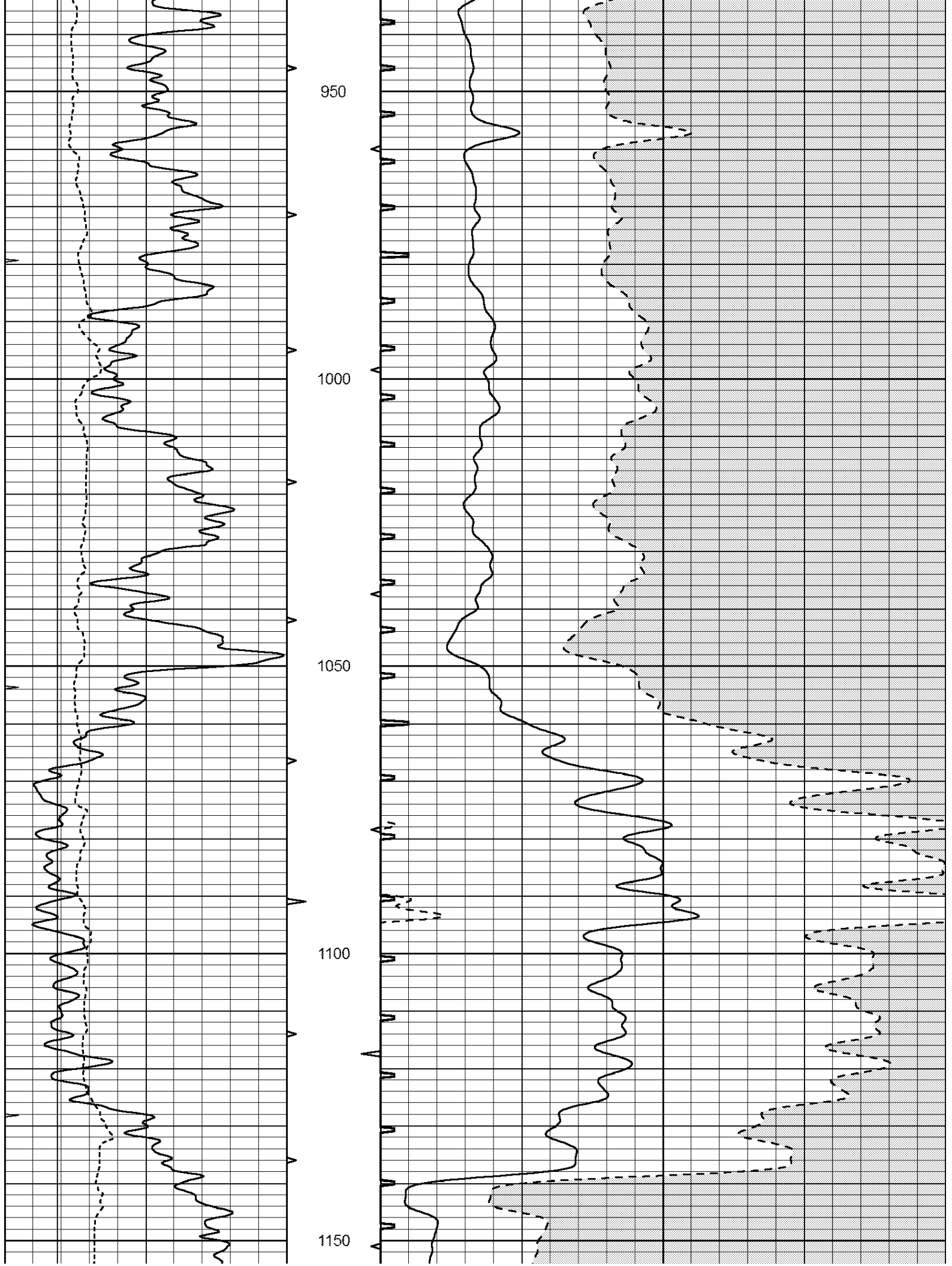
Database File: 25859pe.db
Dataset Pathname: pass6.9.3
Presentation Format: _slt
Dataset Creation: Wed Aug 27 23:41:34 2014
Charted by: Depth in Feet scaled 1:240

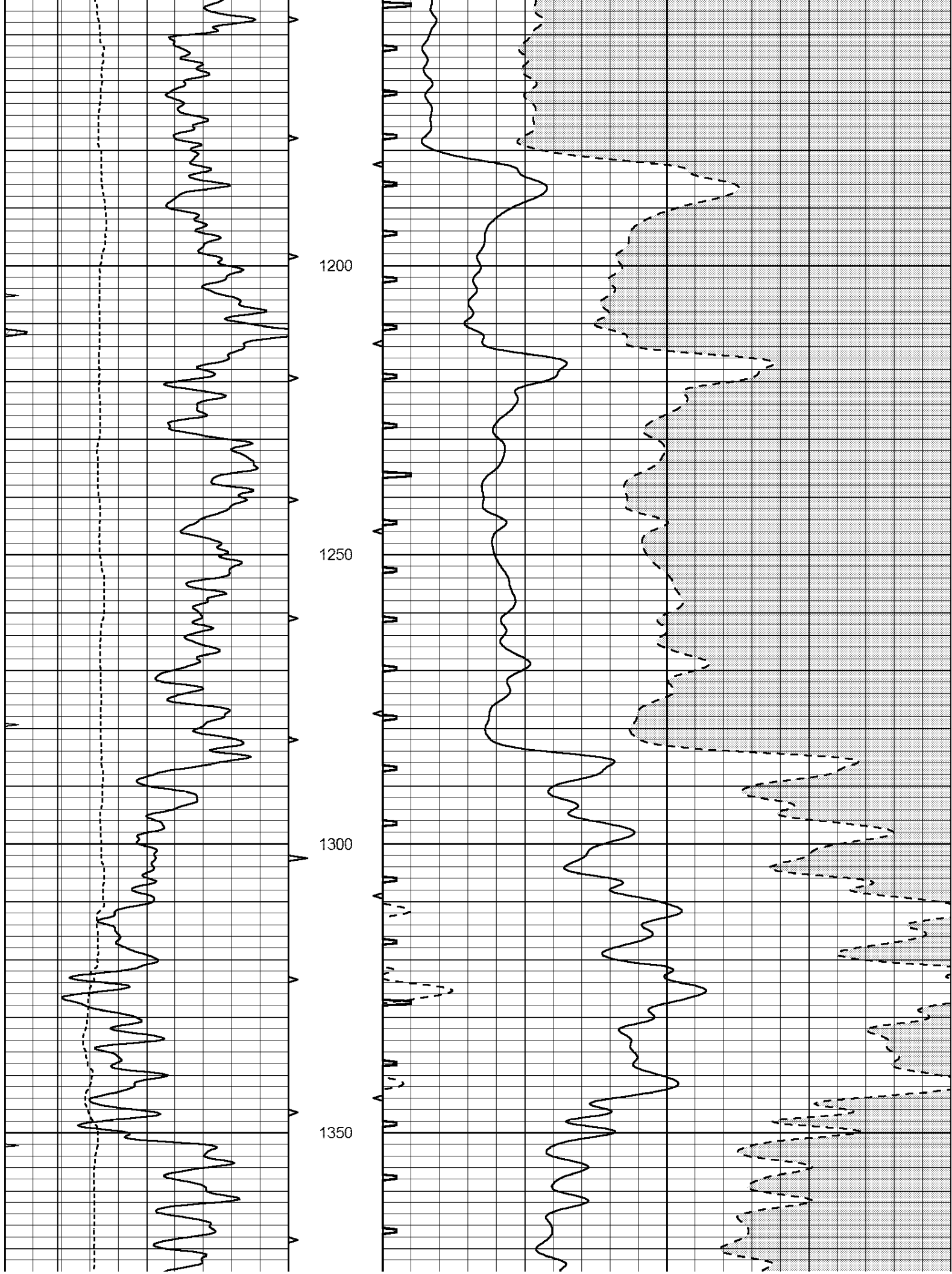
0	GAMMA RAY (GAPI)	150	ABHV	140	DELTA TIME (usec/ft)	40
6	CALIPER (in)	16	10 (ft3) 0	30	SONIC POROSITY (pu)	-10
0	MINMK	20	TBHV	0	ITT (msec)	20
			0 (ft3) 10			

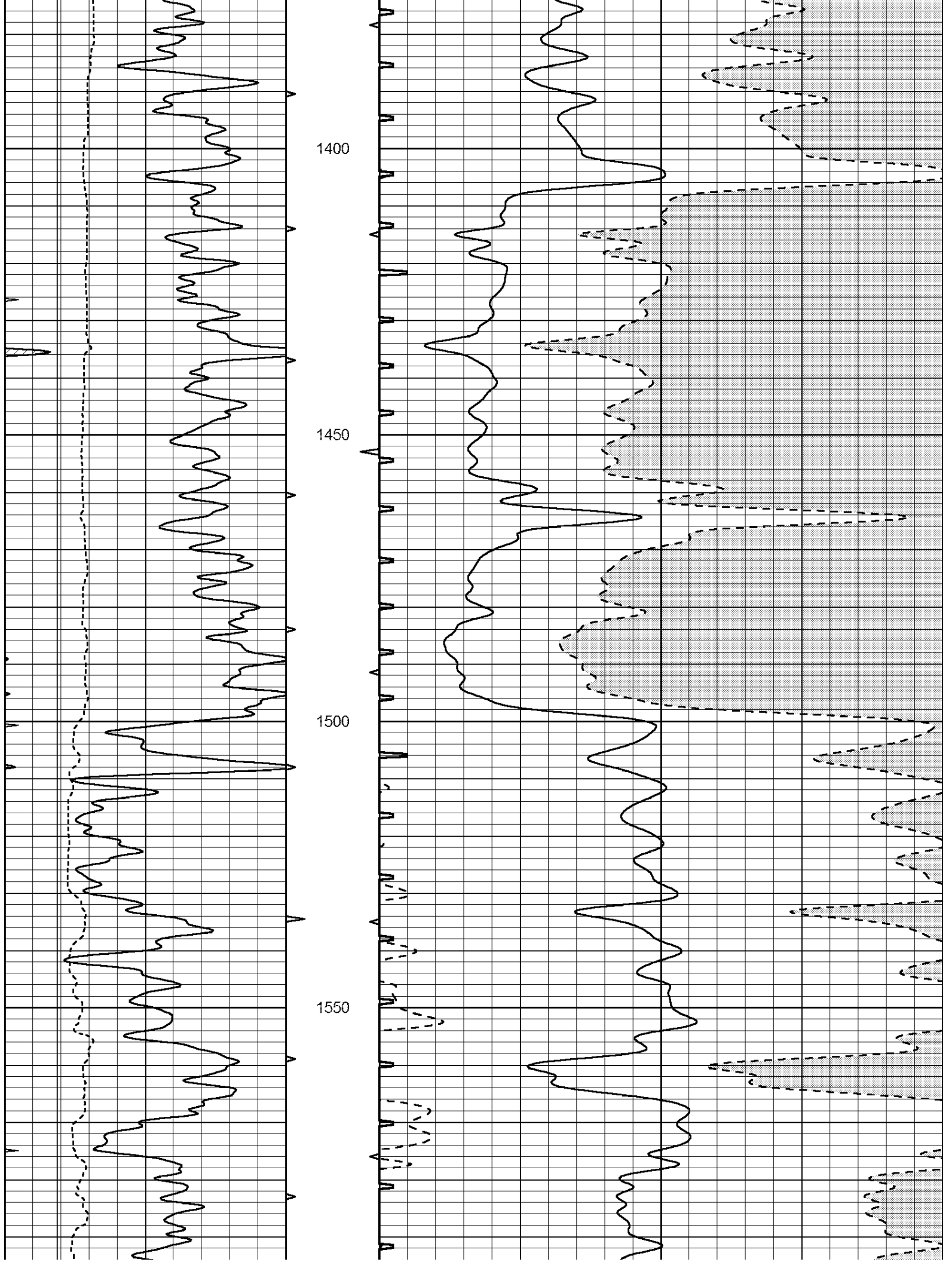


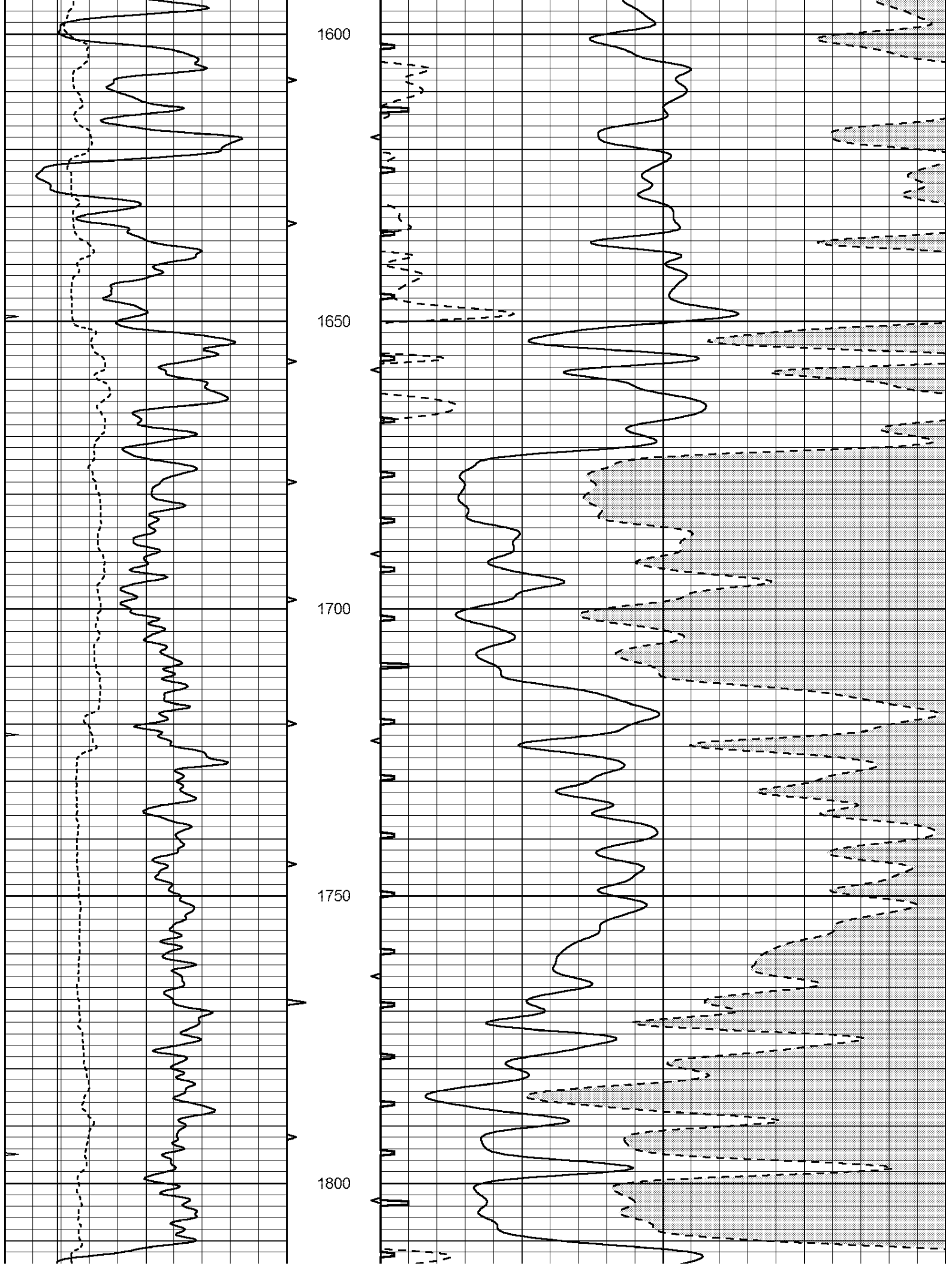


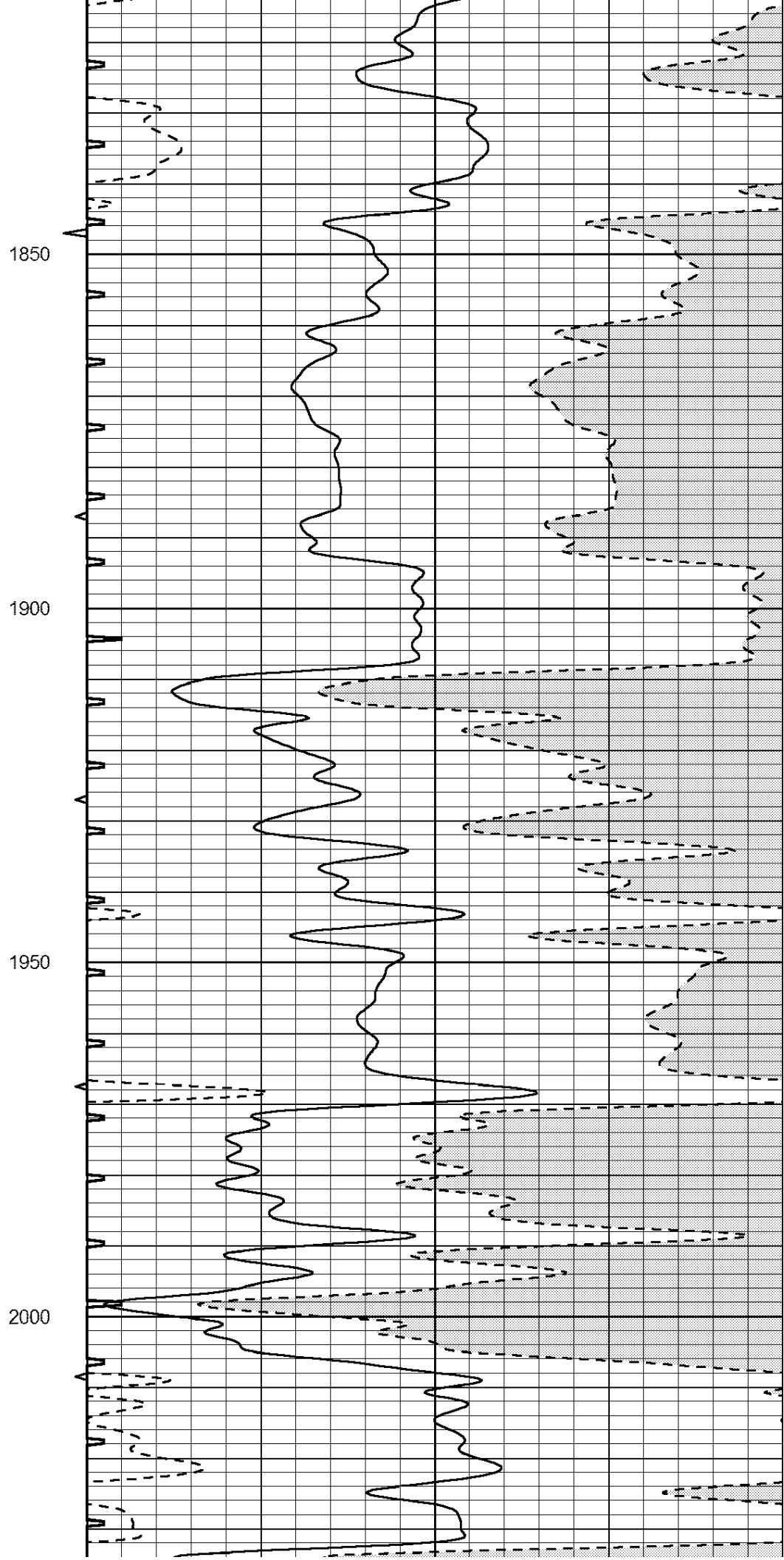
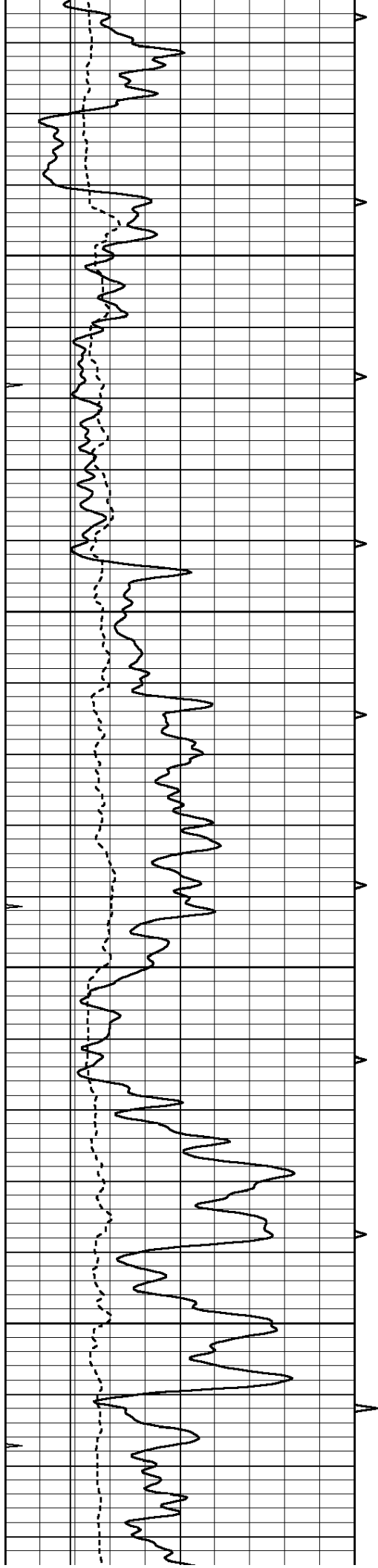


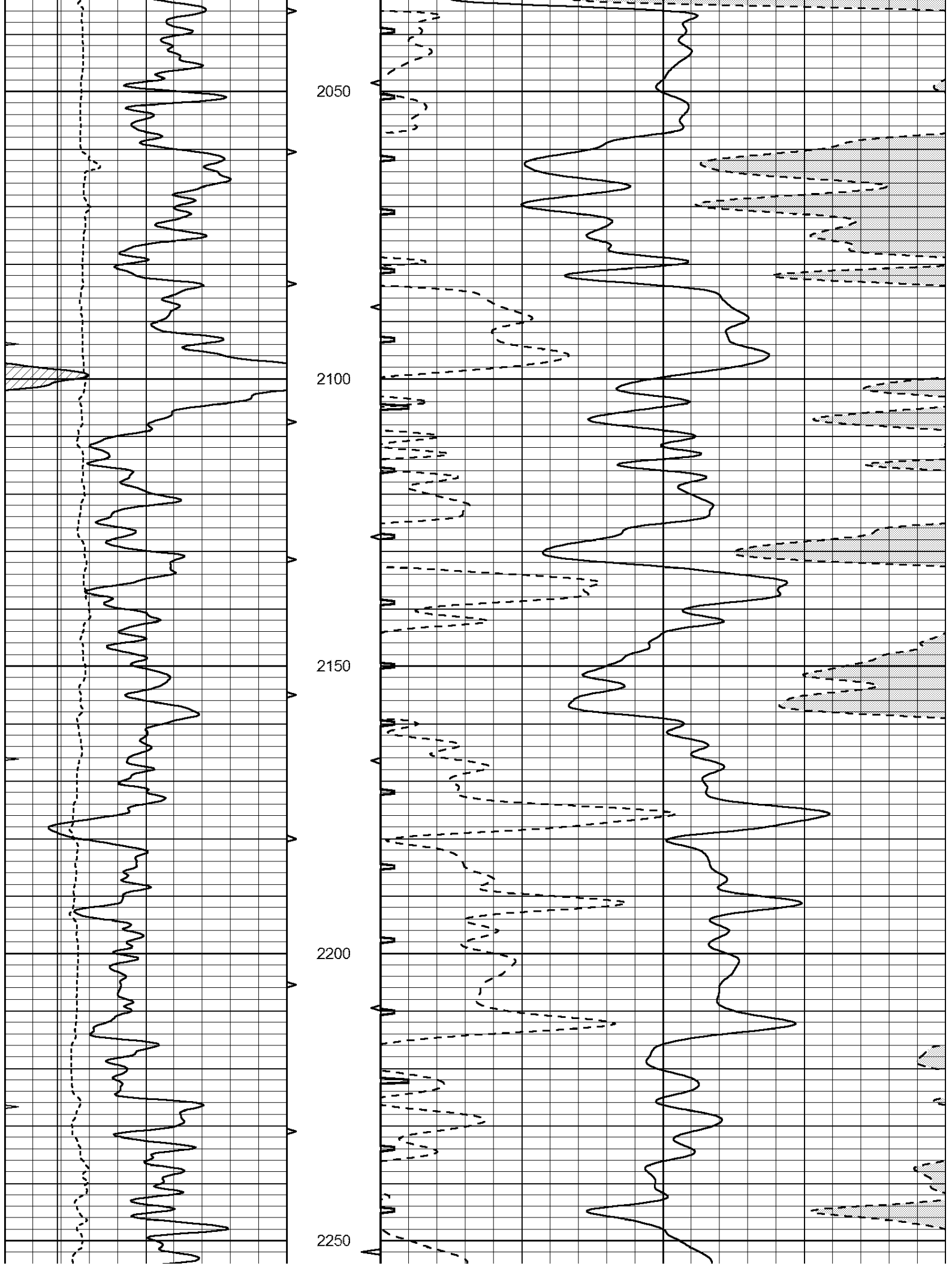


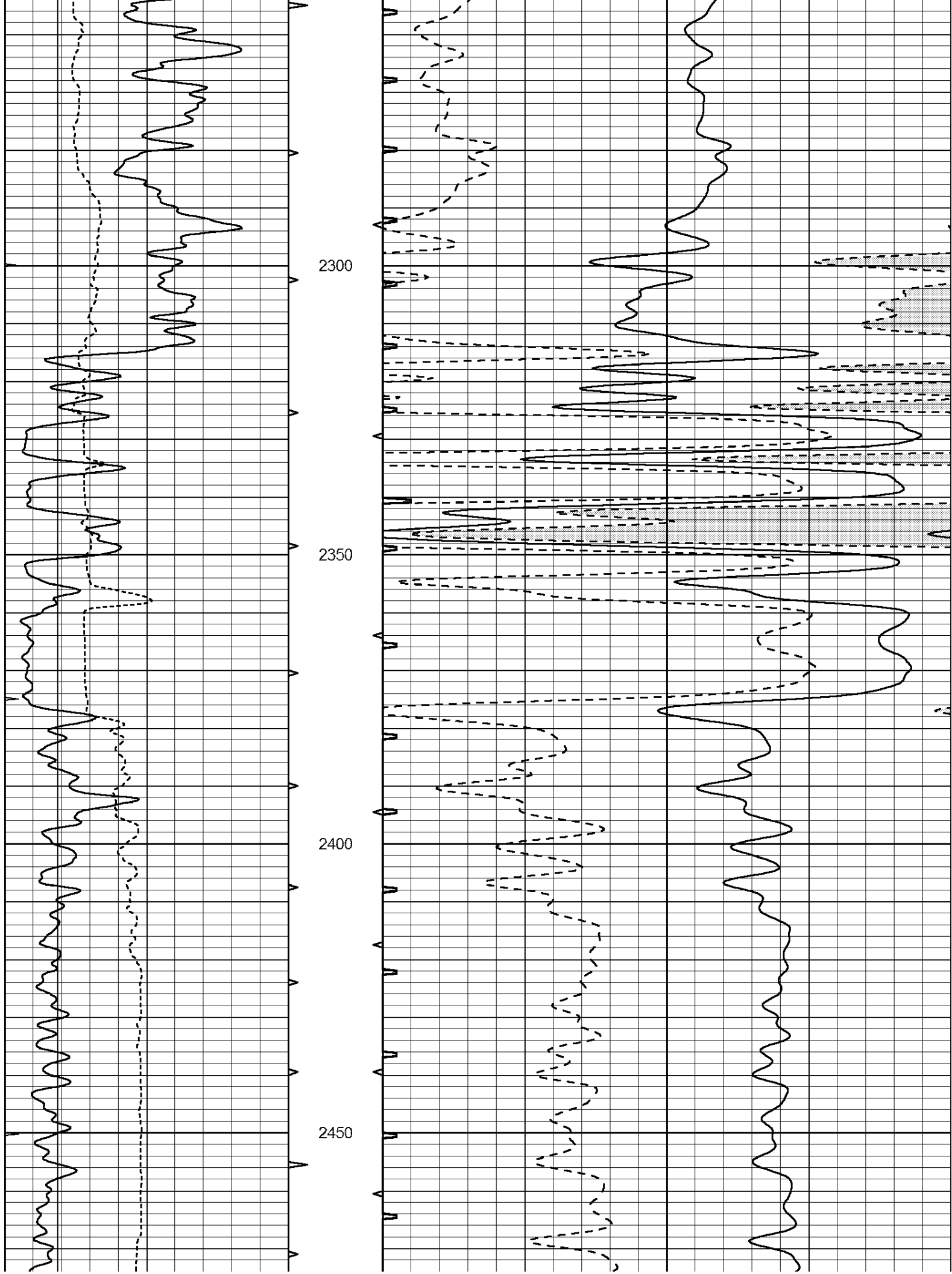


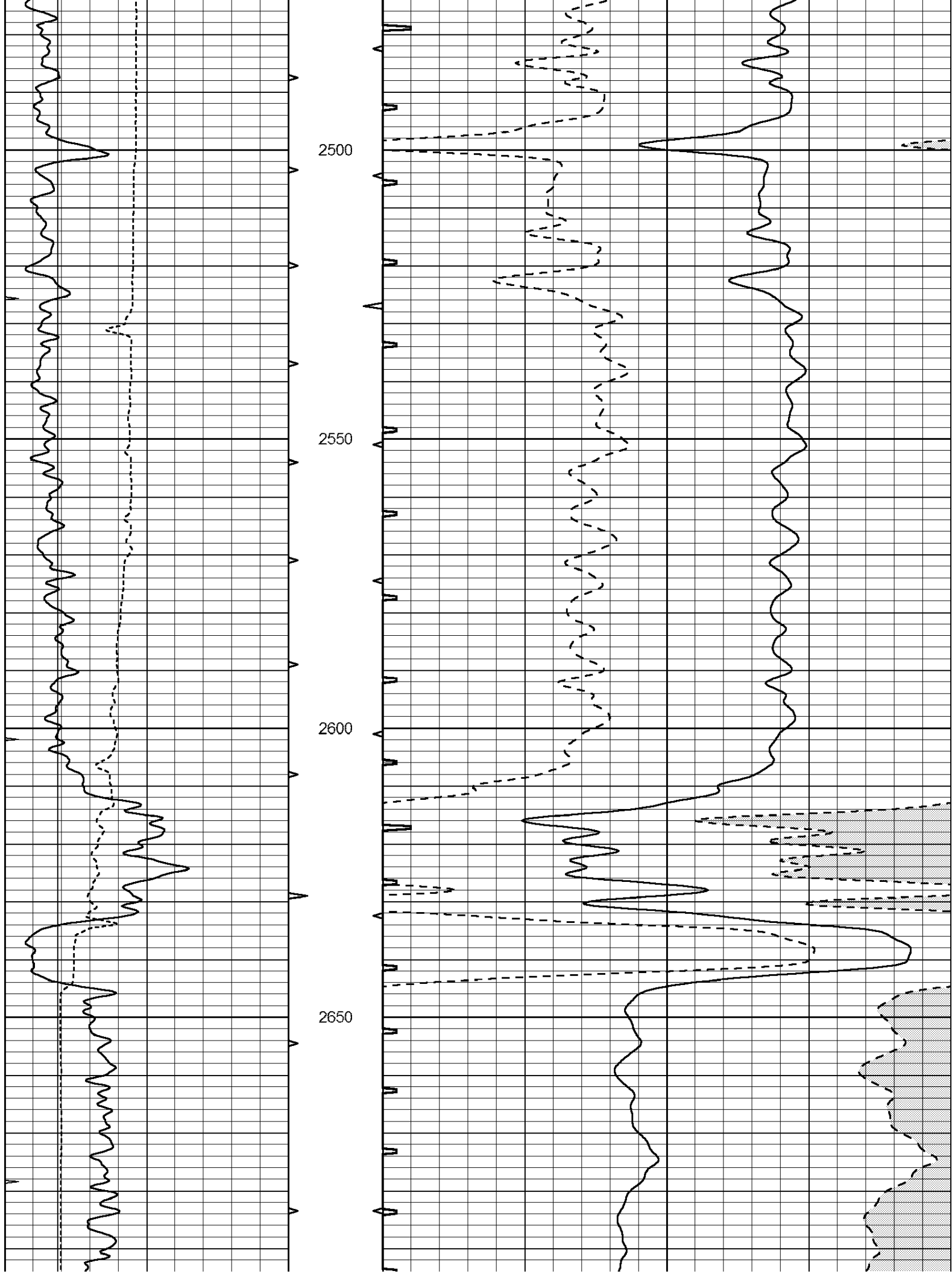


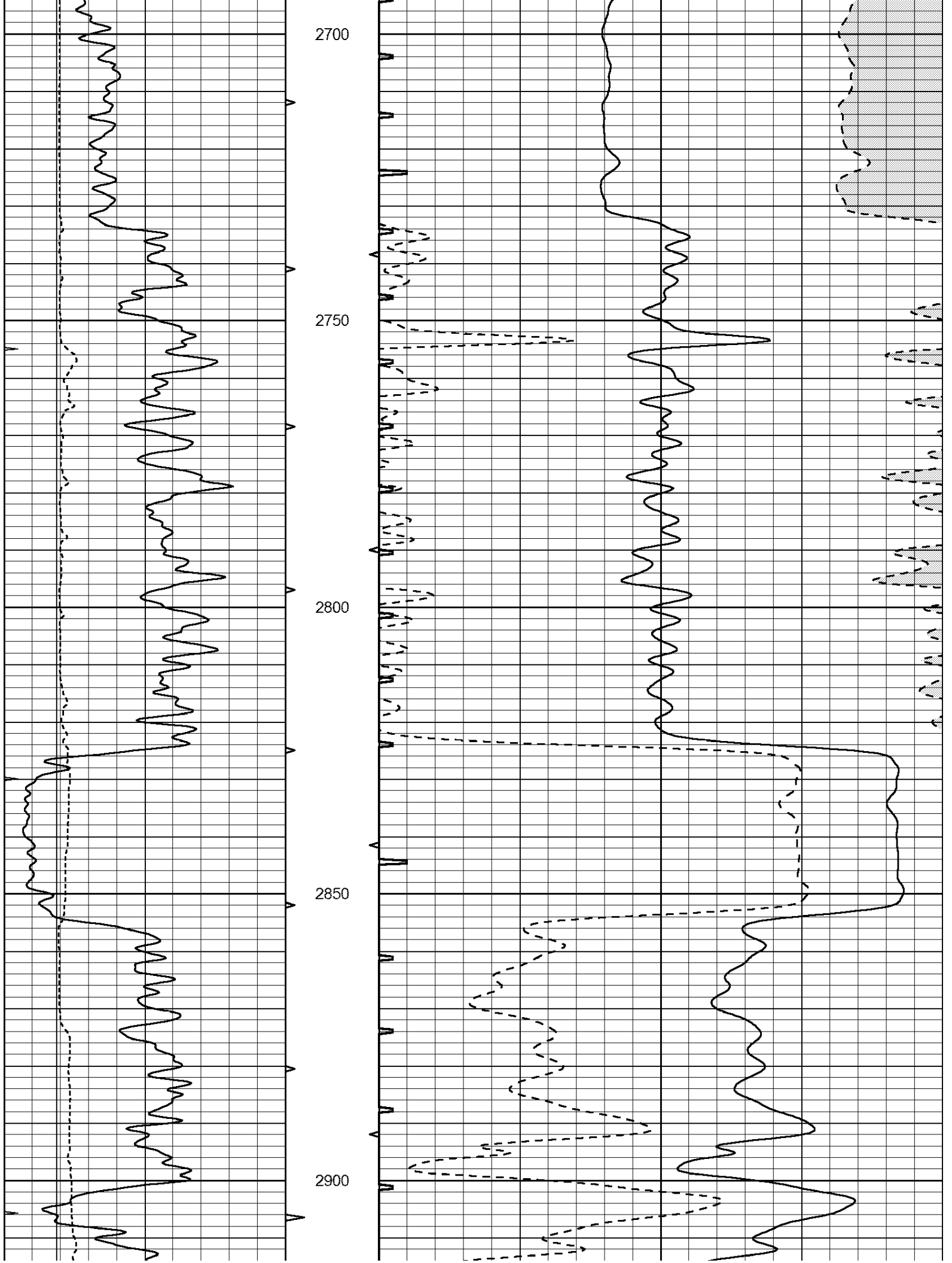


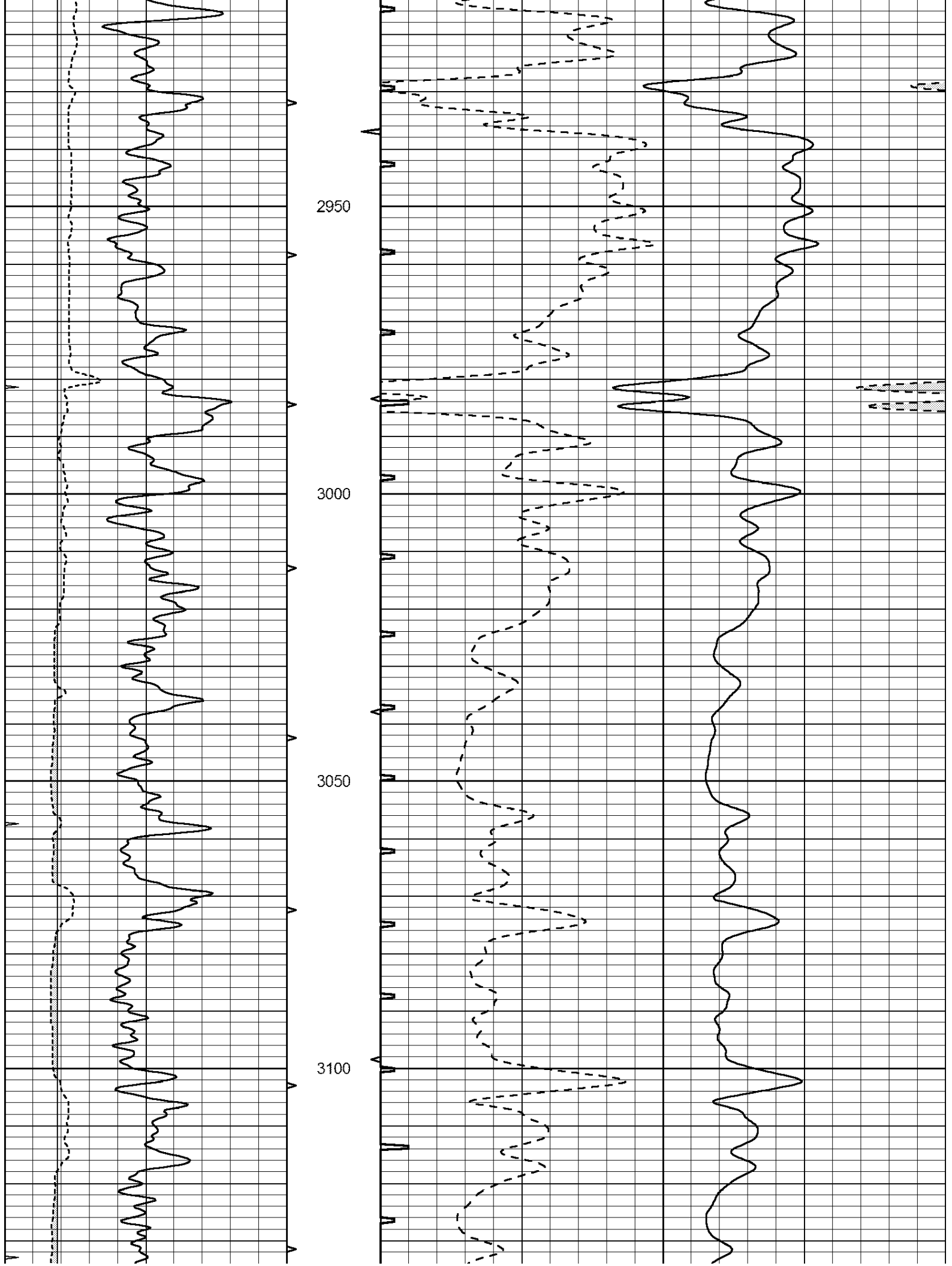


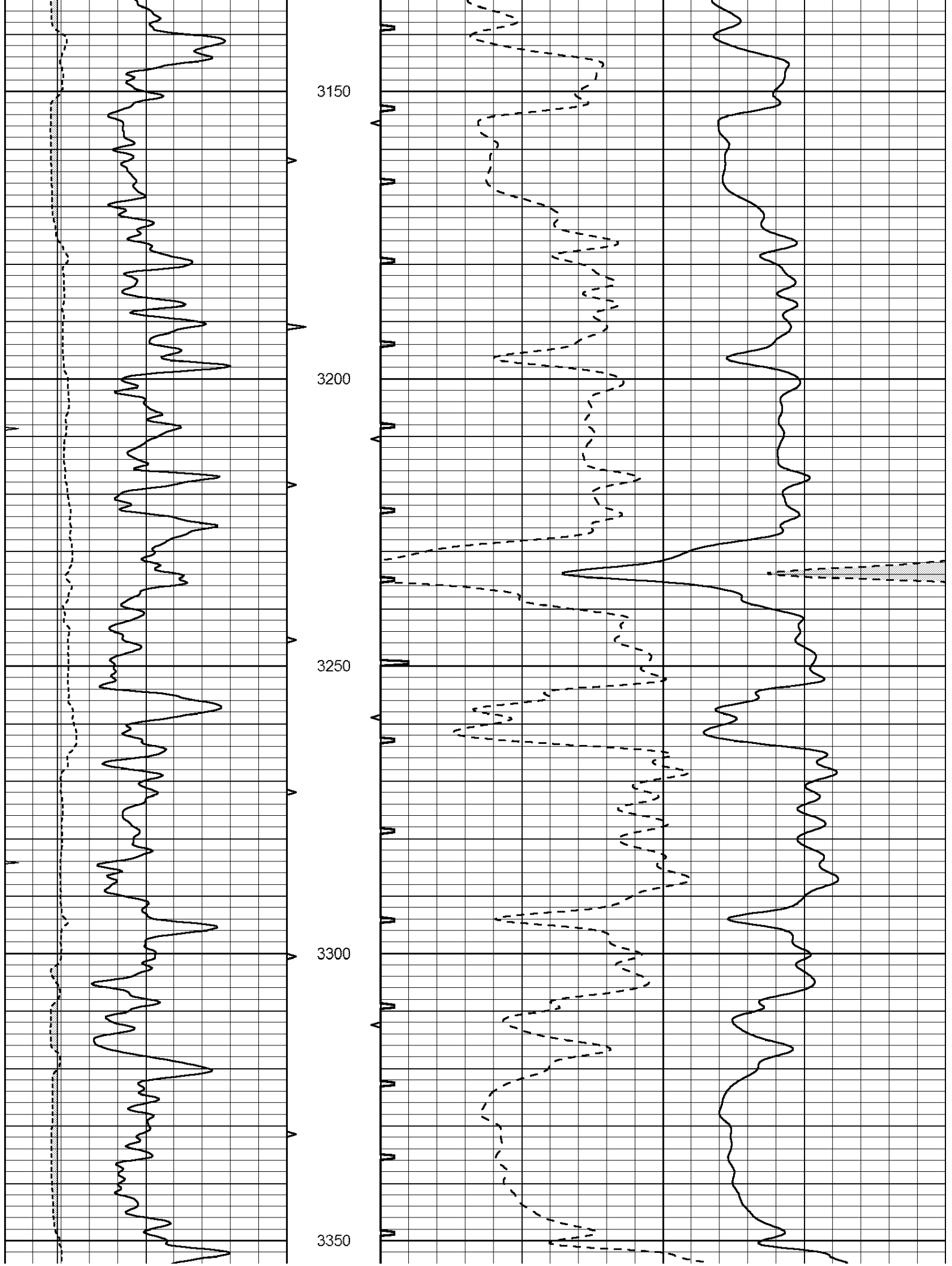


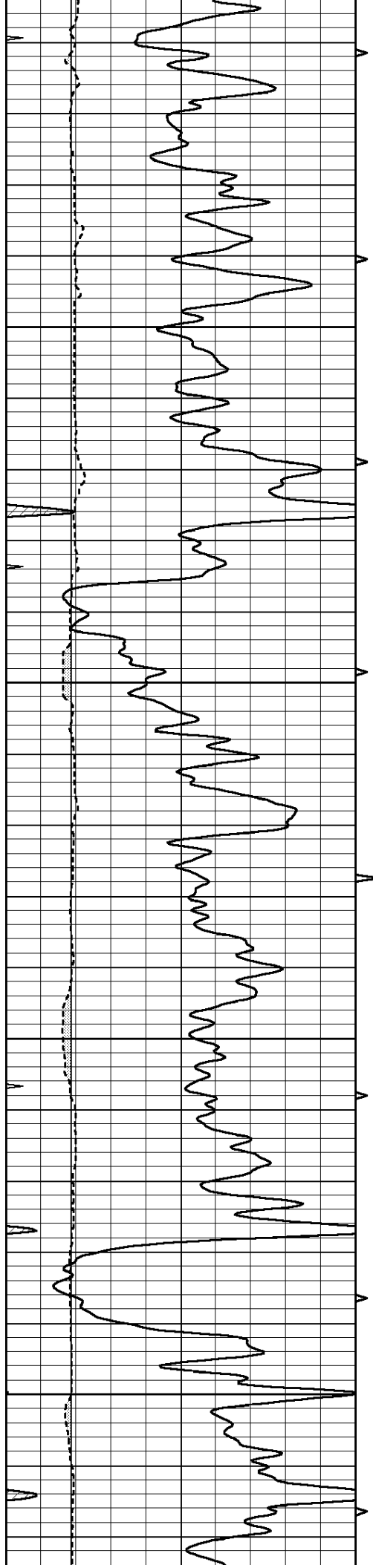










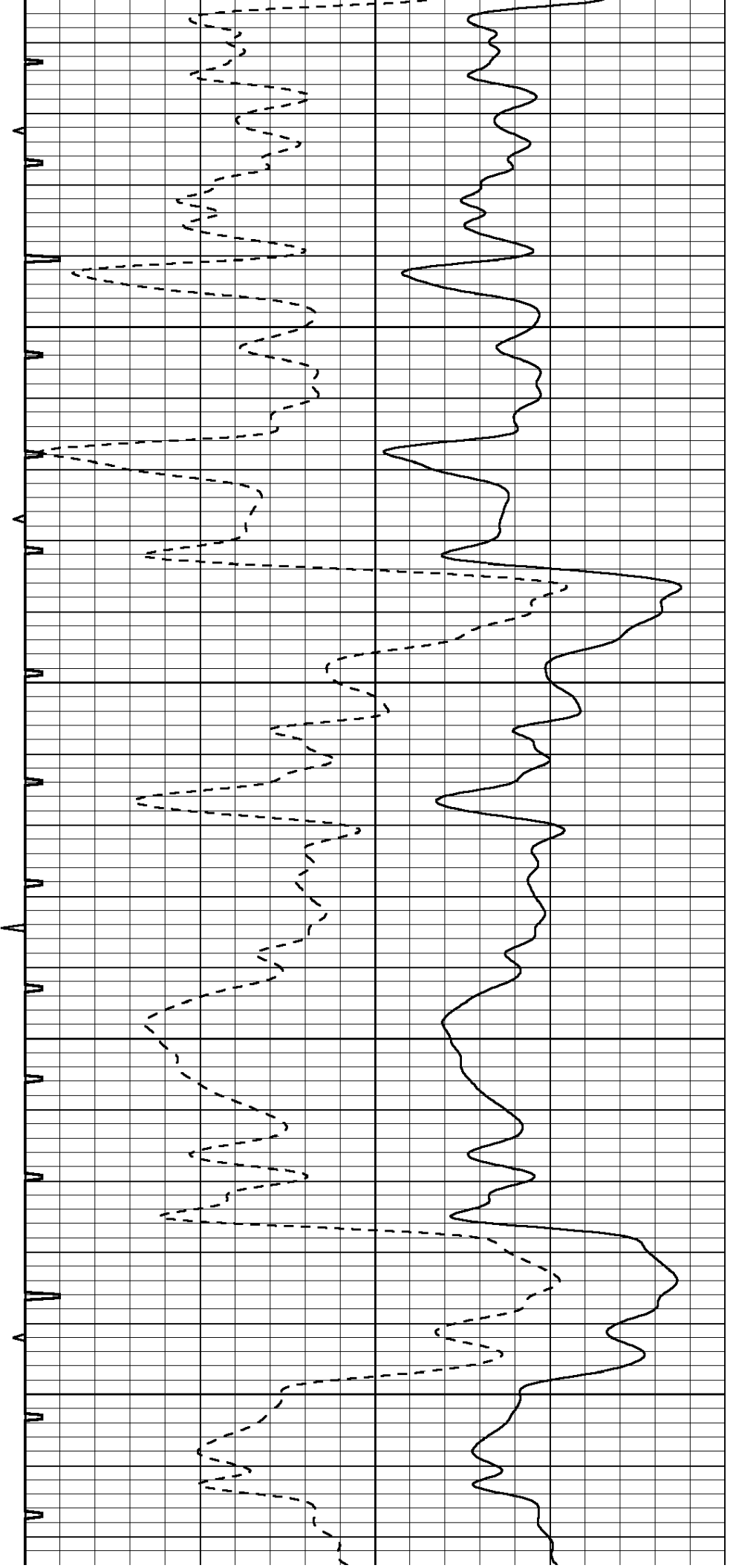


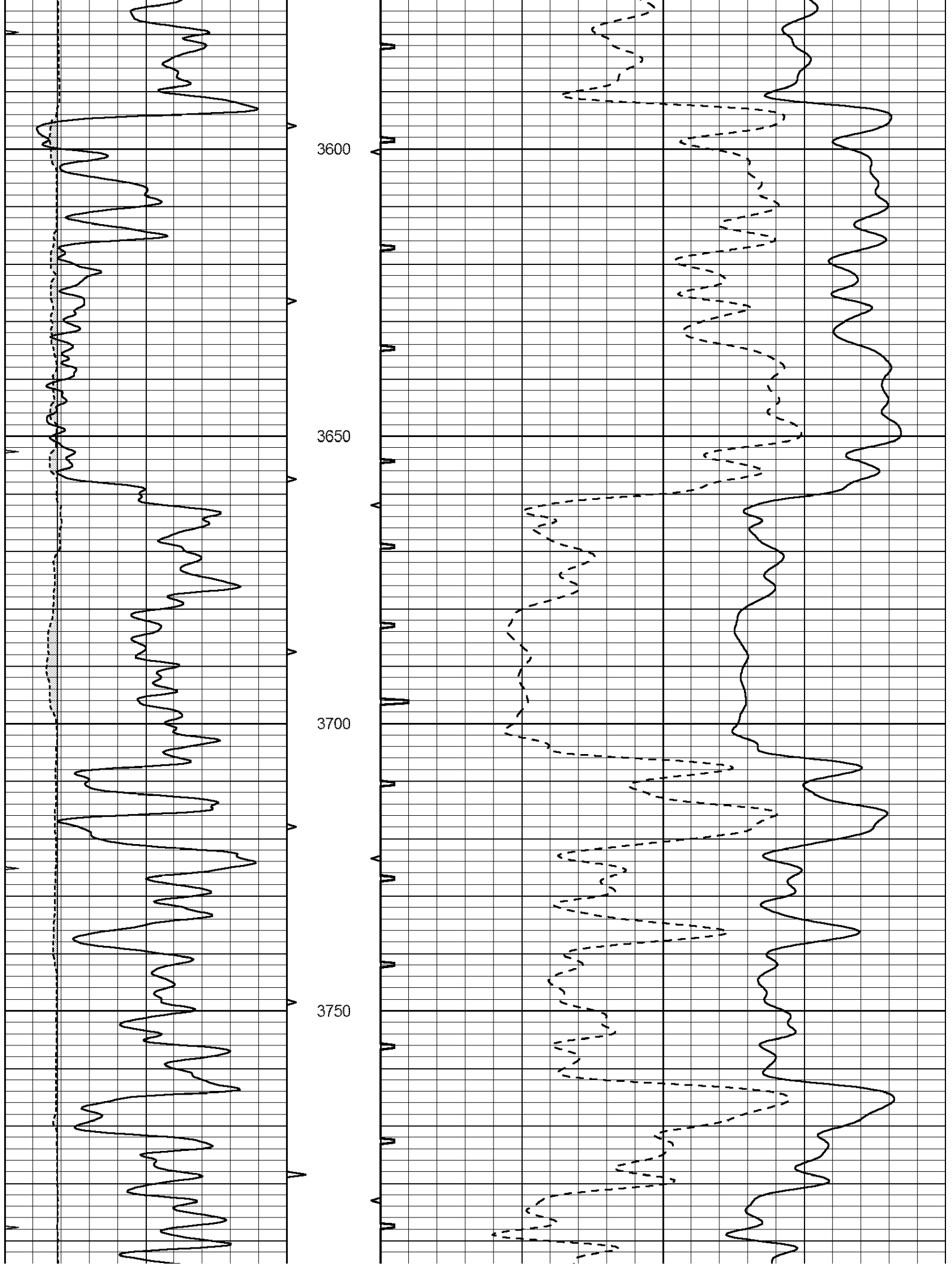
3400

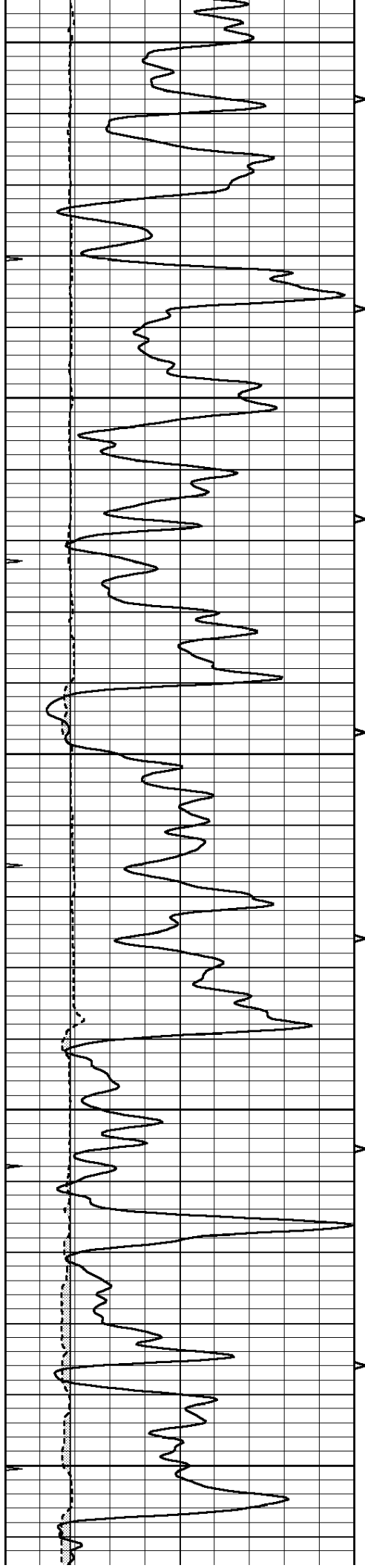
3450

3500

3550







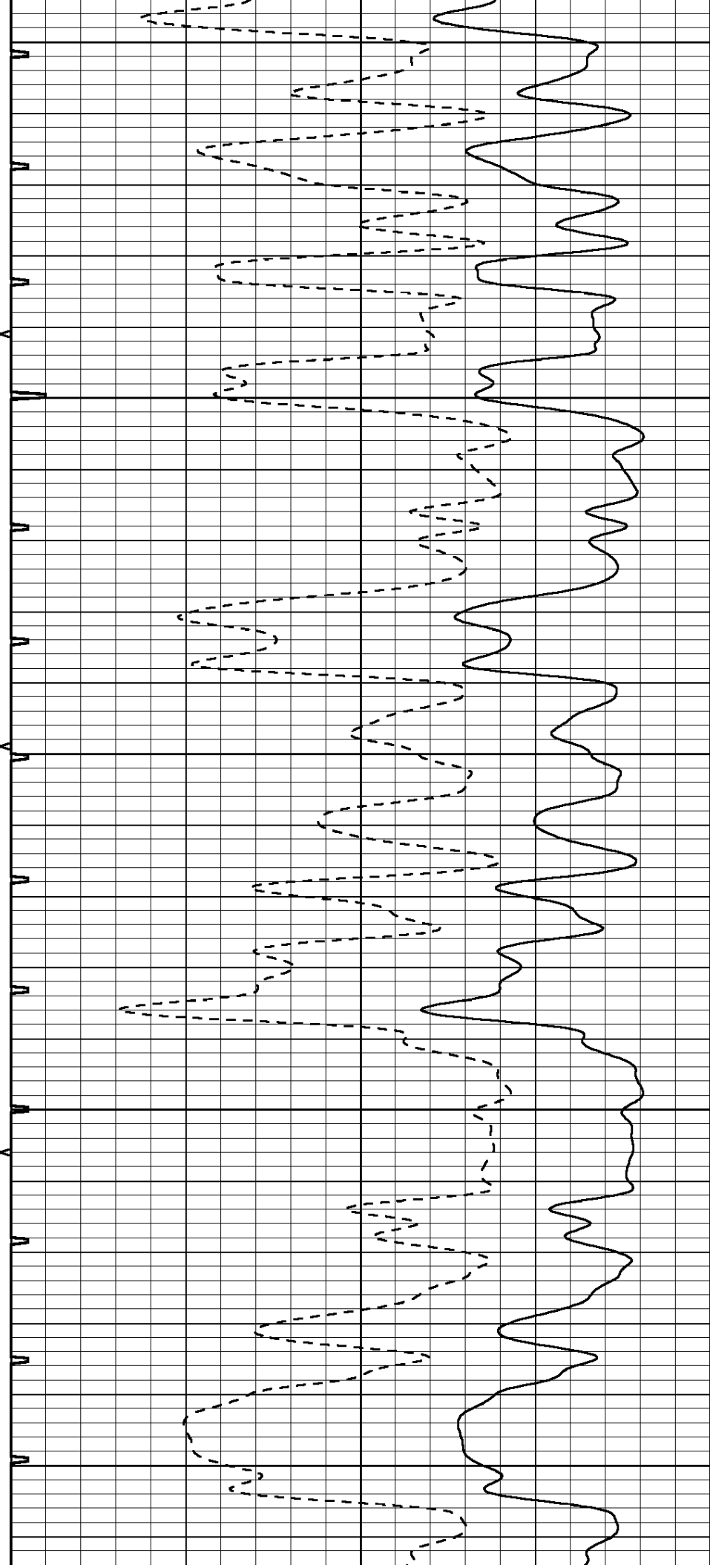
3800

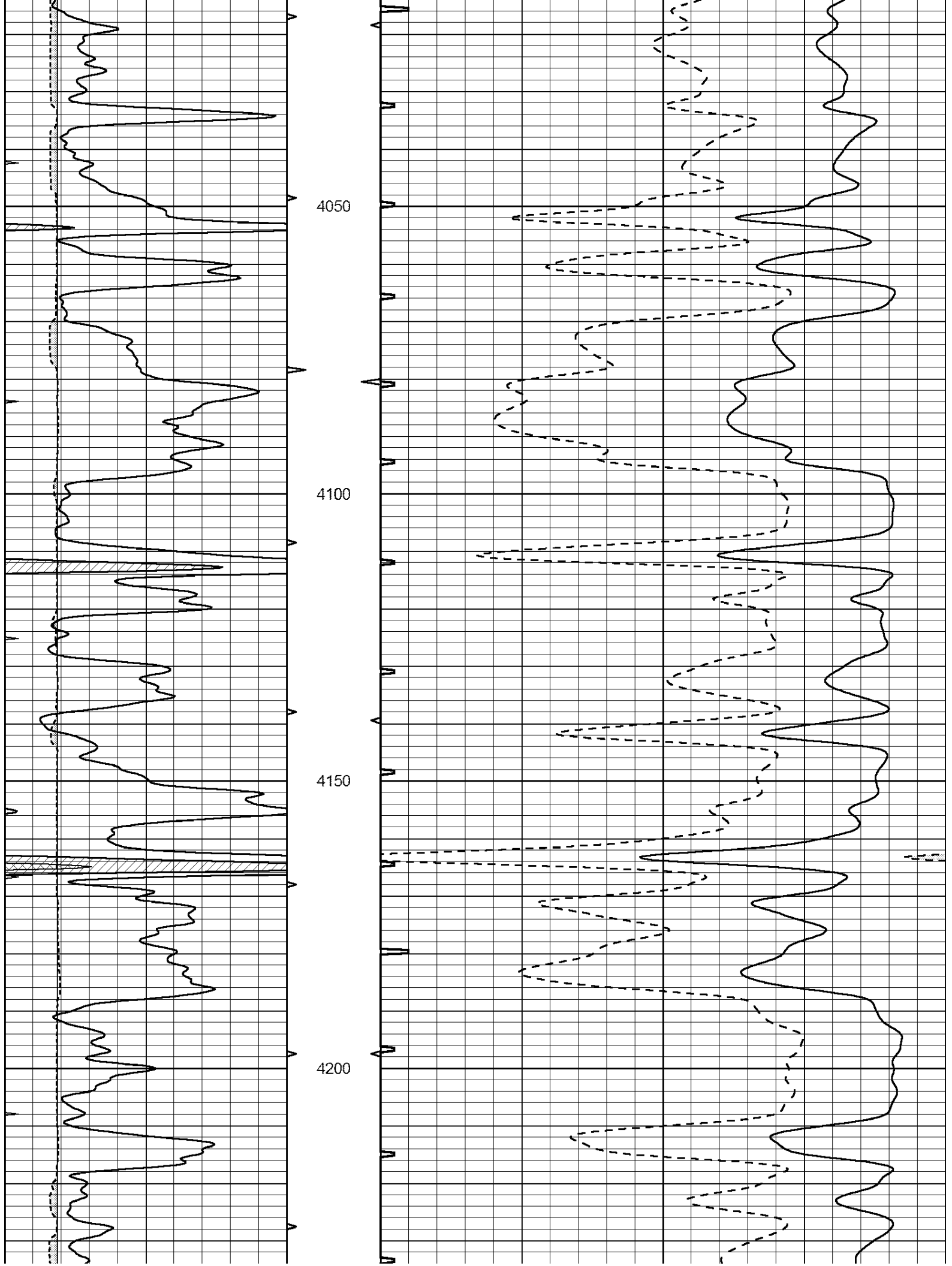
3850

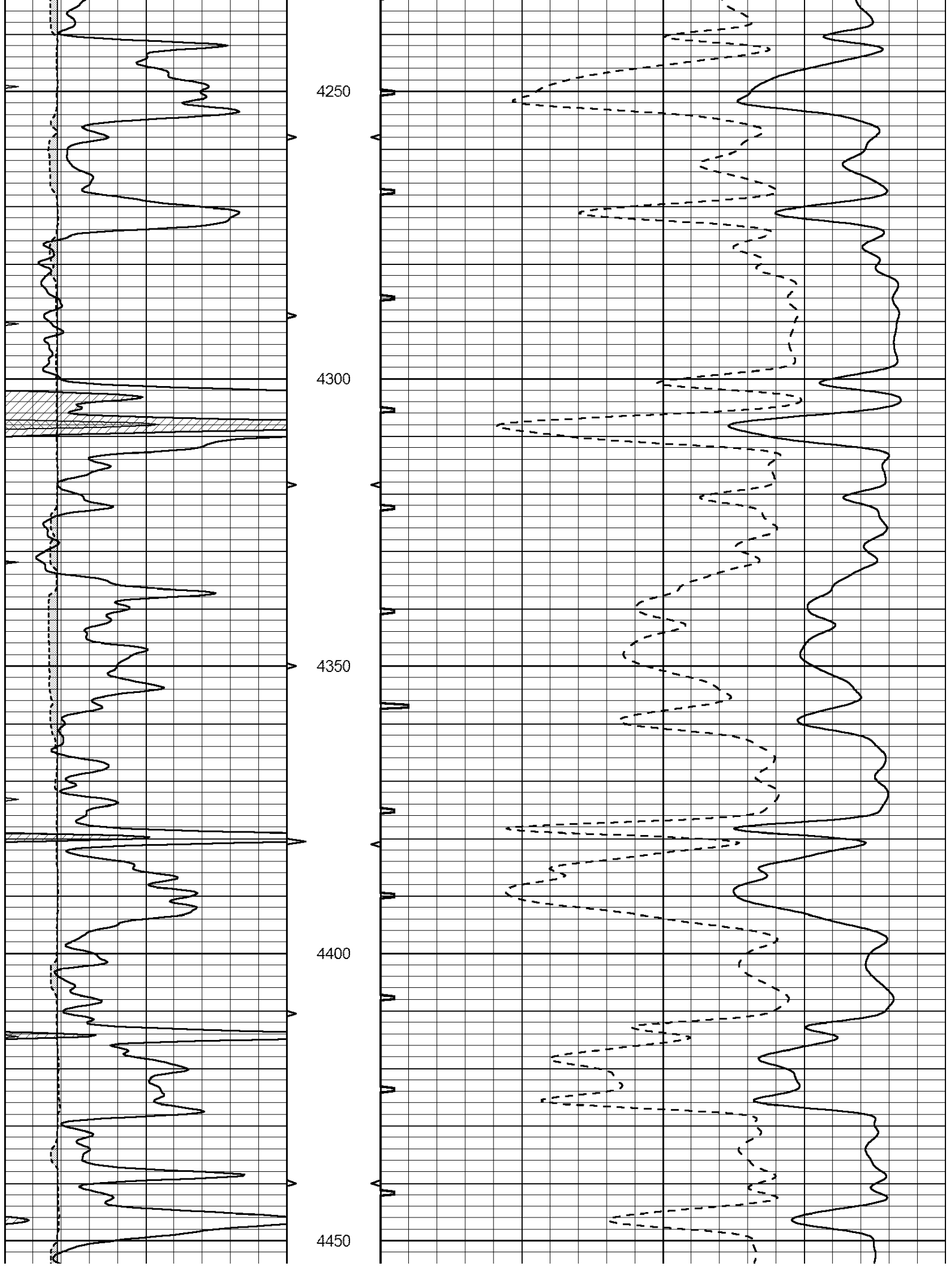
3900

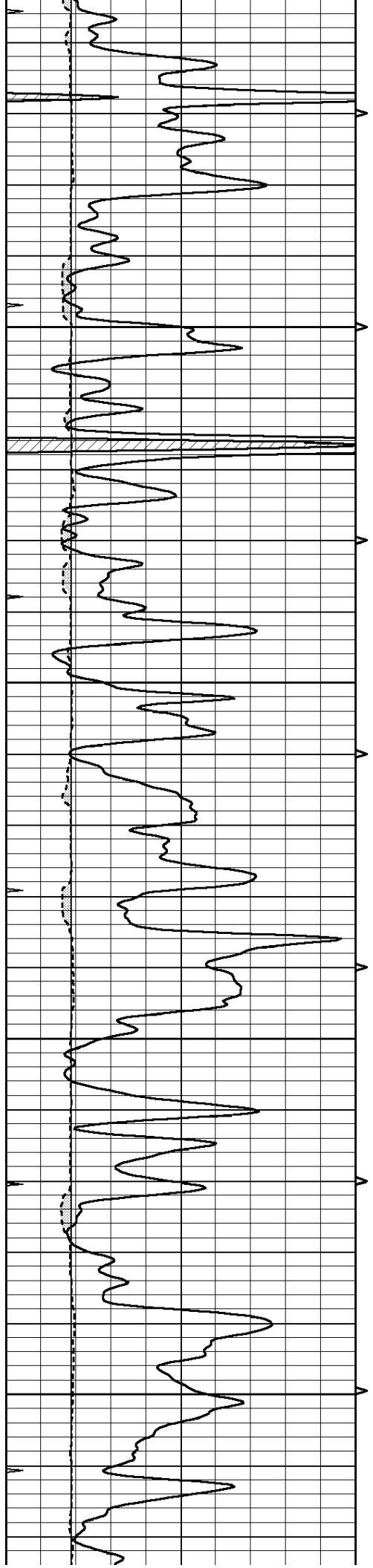
3950

4000







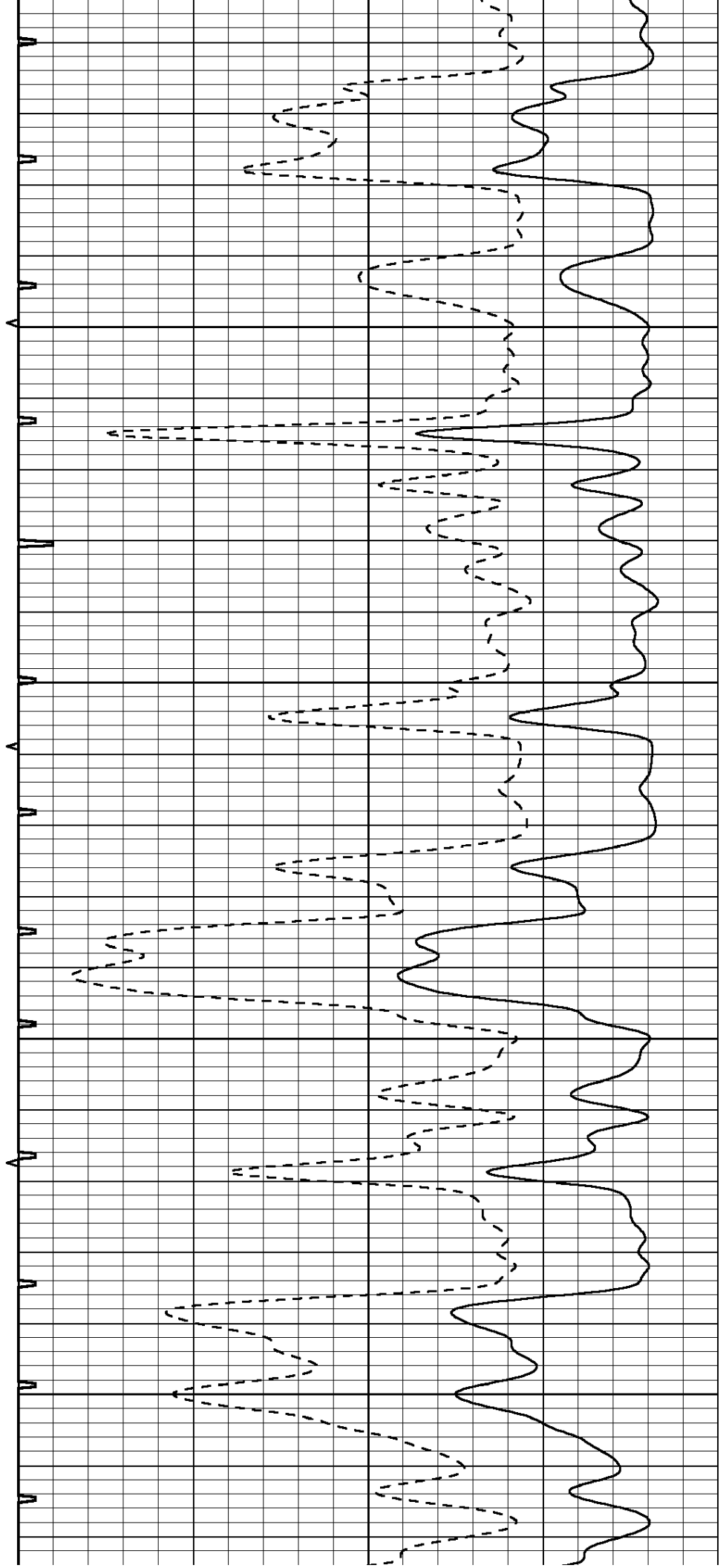


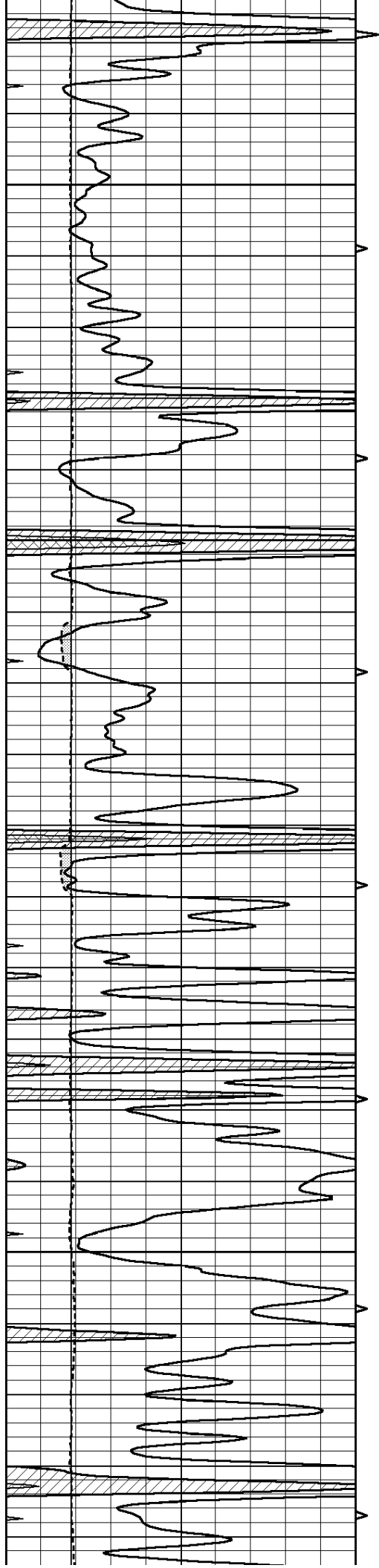
4500

4550

4600

4650



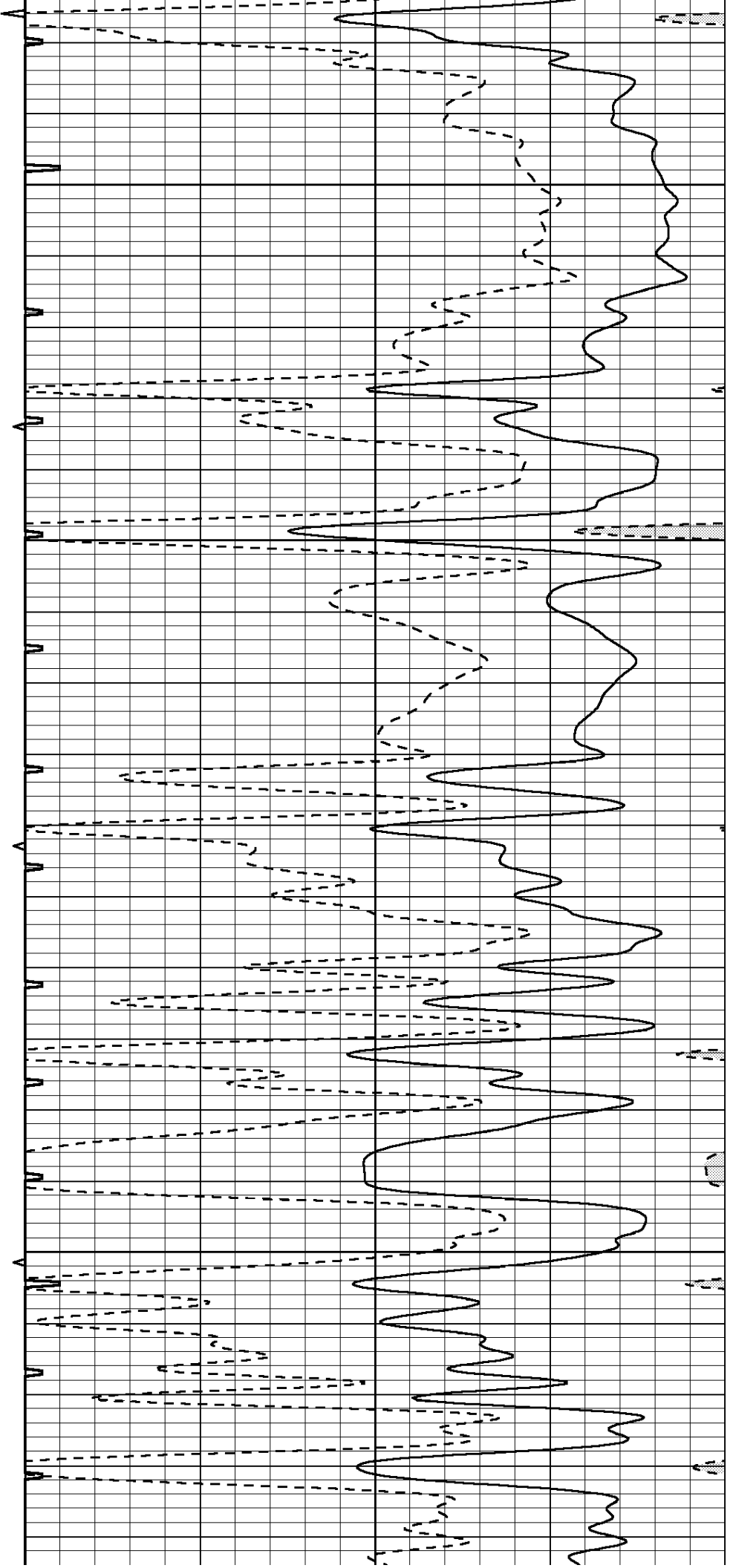


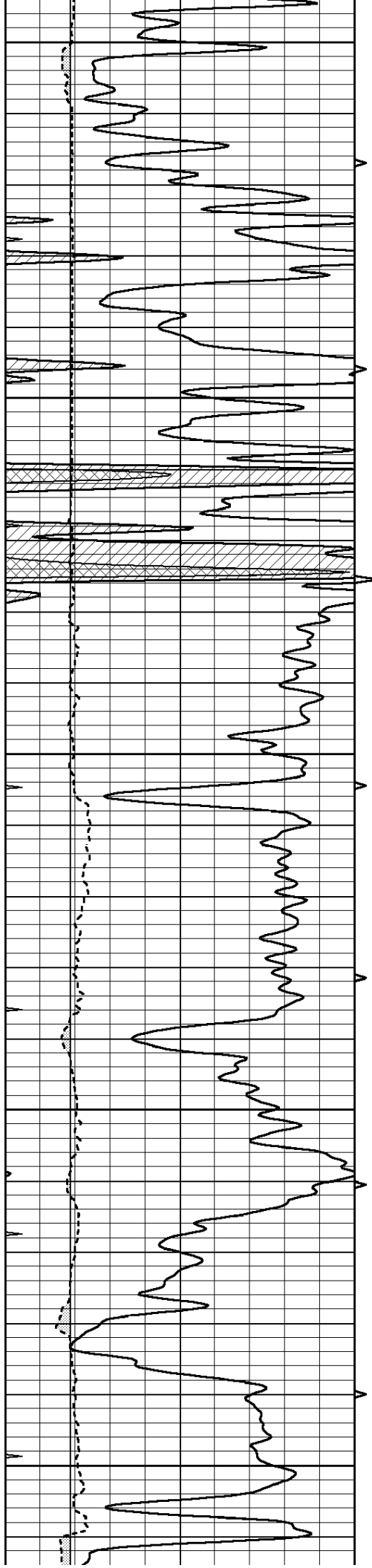
4700

4750

4800

4850





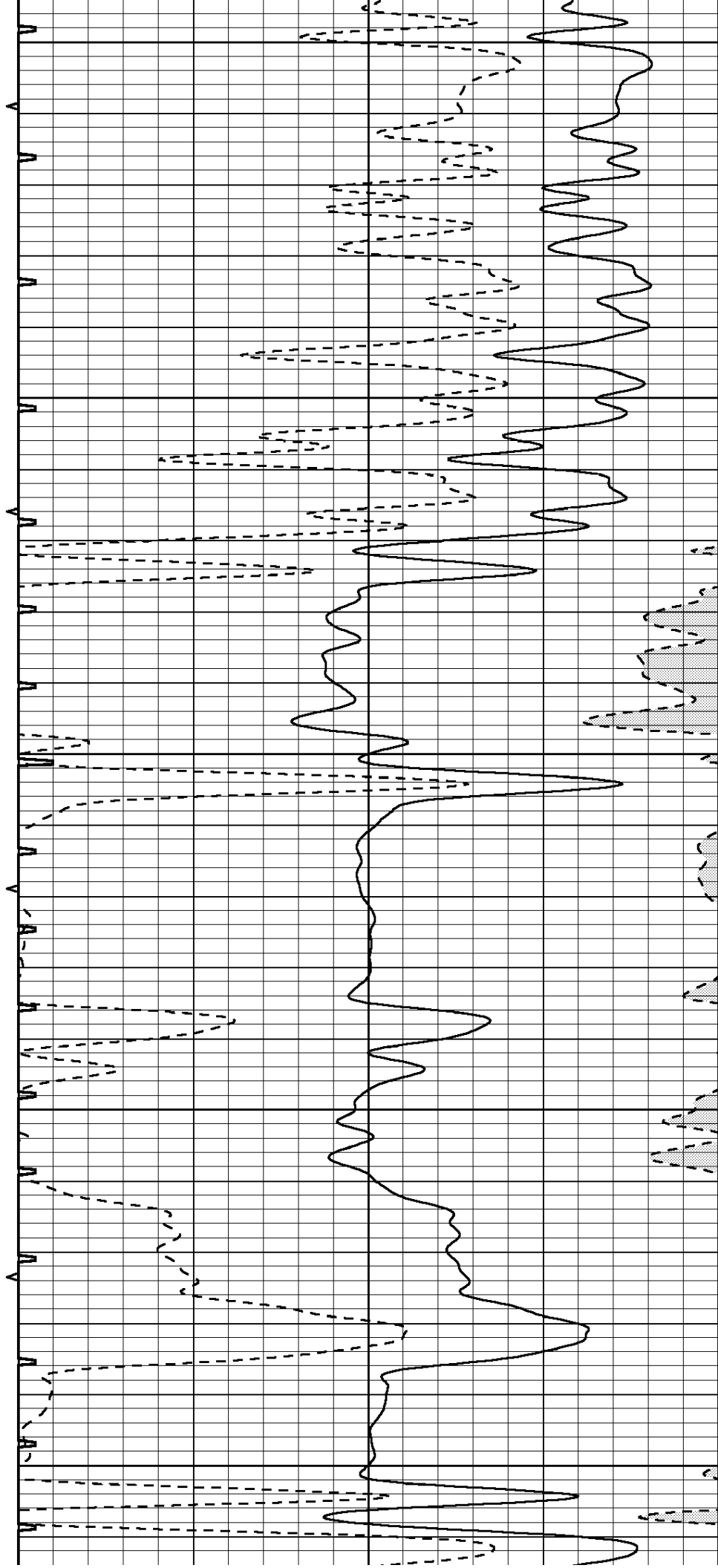
4900

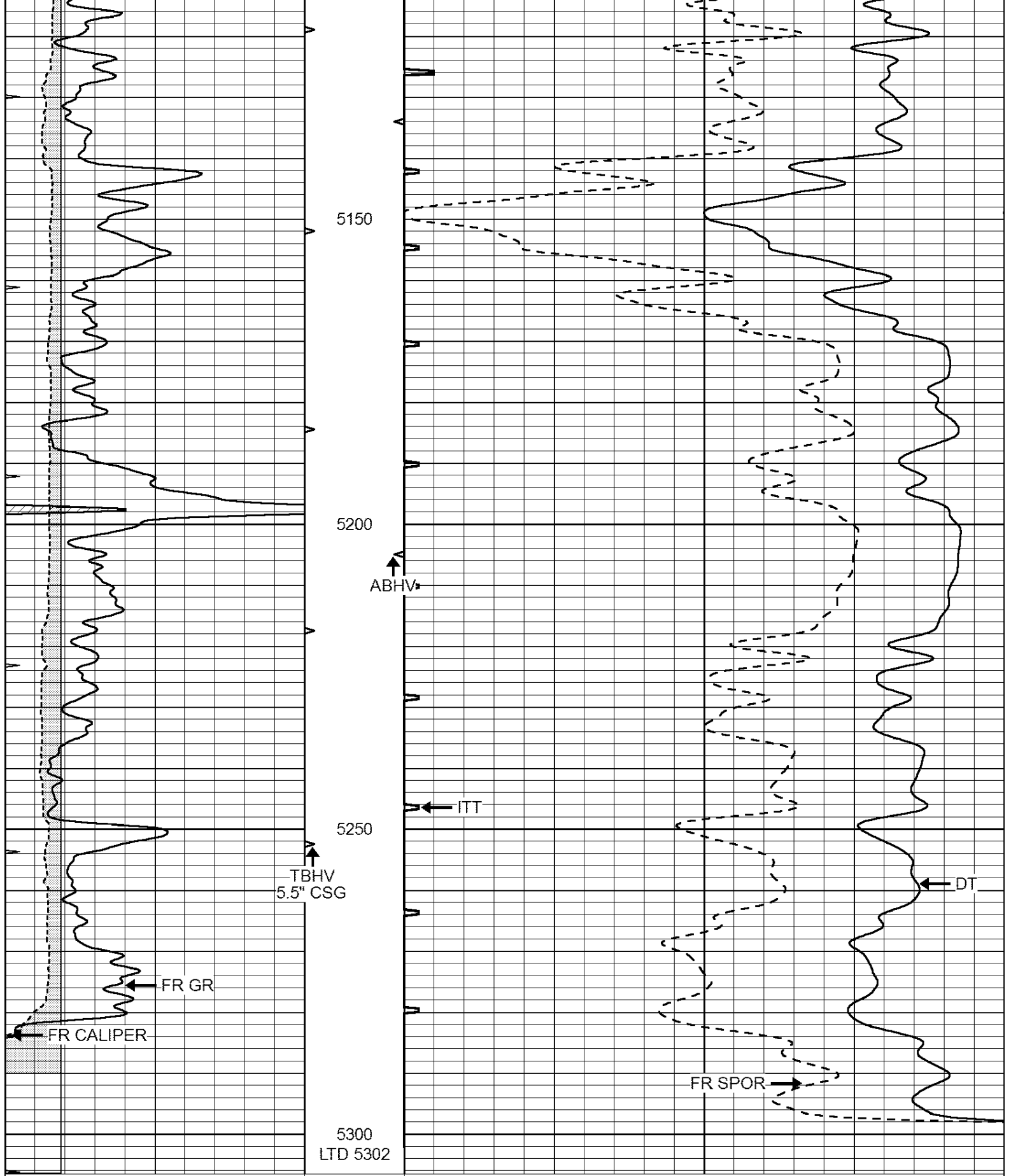
4950

5000

5050

5100





0	GAMMA RAY (GAPI)	150	ABHV	140	DELTA TIME (usec/ft)	40	
6	CALIPER (in)	16	10 (ft3)	0	30	SONIC POROSITY (pu)	-10
0	MINMK	20	TBHV	0	ITT (msec)	20	
			0 (ft3)	10			

Database File: 25859pe.db
 Dataset Pathname: pass5.2
 Presentation Format: _slt
 Dataset Creation: Wed Aug 27 22:05:36 2014 by Calc Open-Cased 090629
 Charted by: Depth in Feet scaled 1:240

0	GAMMA RAY (GAPI)	150	ABHV	140	DELTA TIME (usec/ft)	40	
6	CALIPER (in)	16	10 (ft3)	0	30	SONIC POROSITY (pu)	-10
0	MINMK	20	TBHV	0	ITT (msec)	20	
			0 (ft3)	10			

