



DUAL INDUCTION  
LL3/GR LOG

Company LR ENERGY, INC.  
Well GARTNER # 12B-30  
Field SORGHUM - HOLLOW  
County MONTGOMERY  
State KANSAS

Company LR ENERGY, INC.  
Well GARTNER # 12B-30  
Field SORGHUM - HOLLOW  
County MONTGOMERY State KANSAS

Location: API #: 15-125-32411-0000  
SW/4  
2460' FSL & 180' FWL  
SEC 30 TWP 32S RGE 14E  
Permanent Datum GL Elevation 872' est  
Log Measured From GL  
Drilling Measured From GL  
Other Services  
CDL/SWN  
Elevation  
K.B. ---  
D.F. ---  
G.L. 872' est

Date	7-22-2014
Run Number	ONE
Depth Driller	1022'
Depth Logger	1023'
Bottom Logged Interval	1021'
Top Log Interval	SURFACE
Casing Driller	8 5/8" @ 21.8'
Casing Logger	8 5/8" @ 21.8'
Bit Size	6 3/4"
Type Fluid in Hole	WATER
Density / Viscosity	
pH / Fluid Loss	
Source of Sample	
Rm @ Meas. Temp	
Rmf @ Meas. Temp	
Rmc @ Meas. Temp	
Source of Rmf / Rmc	
Rm @ BHT	
Time Circulation Stopped	
Time Logger on Bottom	
Maximum Recorded Temperature	
Equipment Number	OW2
Location	HOMINY, OK
Recorded By	LOWERY
Witnessed By	MR. BARKMAN

<<< Fold Here >>>

All interpretations are opinions based on inferences from electrical or other measurements and we cannot and do not guarantee the accuracy or correctness of any interpretation, and we shall not, except in the case of gross or willful negligence on our part, be liable or responsible for any loss, costs, damages, or expenses incurred or sustained by anyone resulting from any interpretation made by any of our officers, agents or employees. These interpretations are also subject to our general terms and conditions set out in our current Price Schedule.

Comments

OW2-8690  
CREW : SHAMBLES



2" DIL SECTION

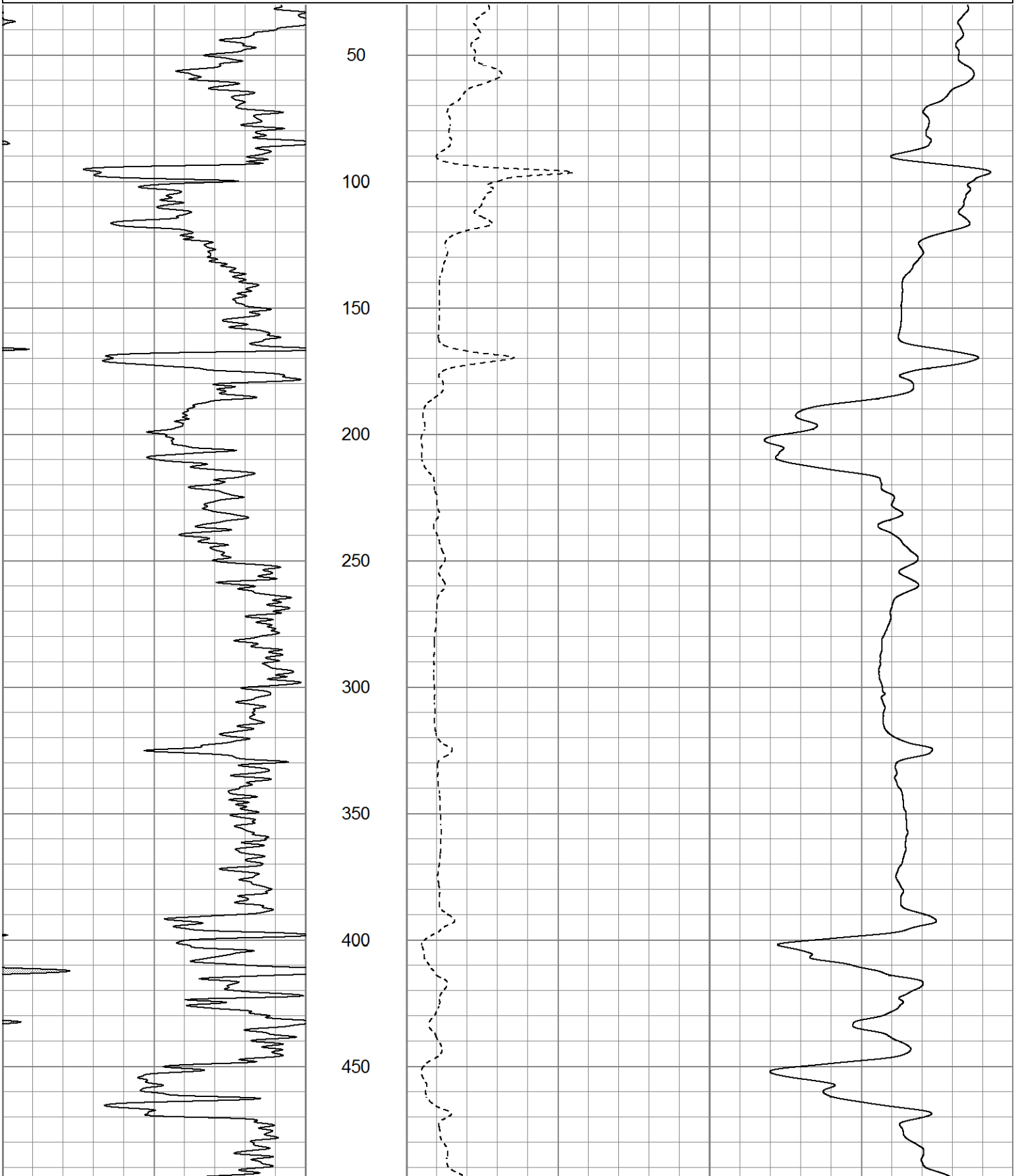
Database File ow2-8690 lr energy.db  
Dataset Pathname DIL/pass1.3  
Presentation Format dil2nomed  
Dataset Creation Tue Jul 22 17:13:21 2014  
Charted by Depth in Feet scaled 1:600

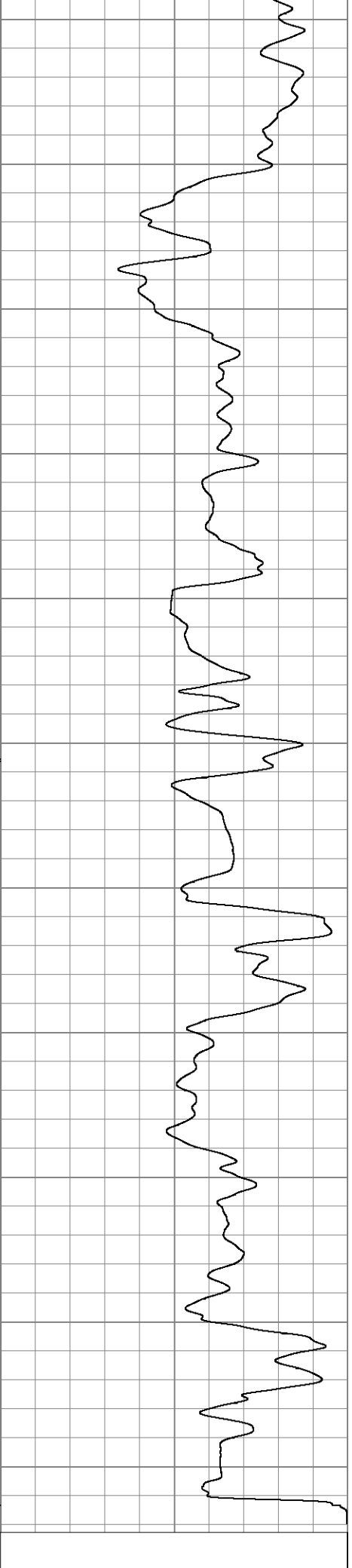
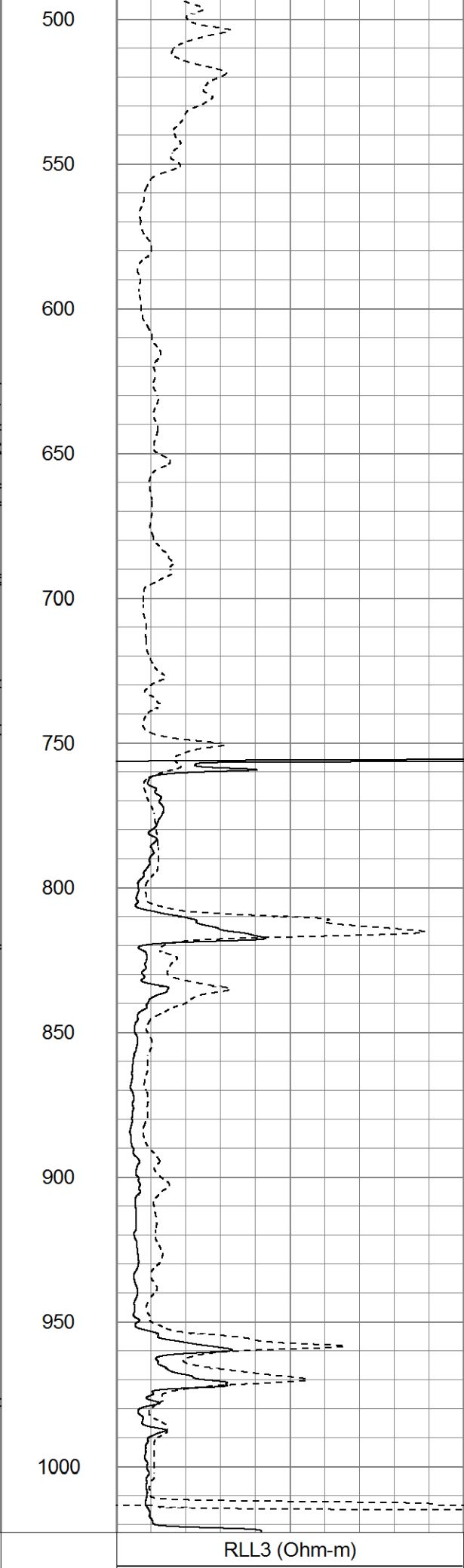
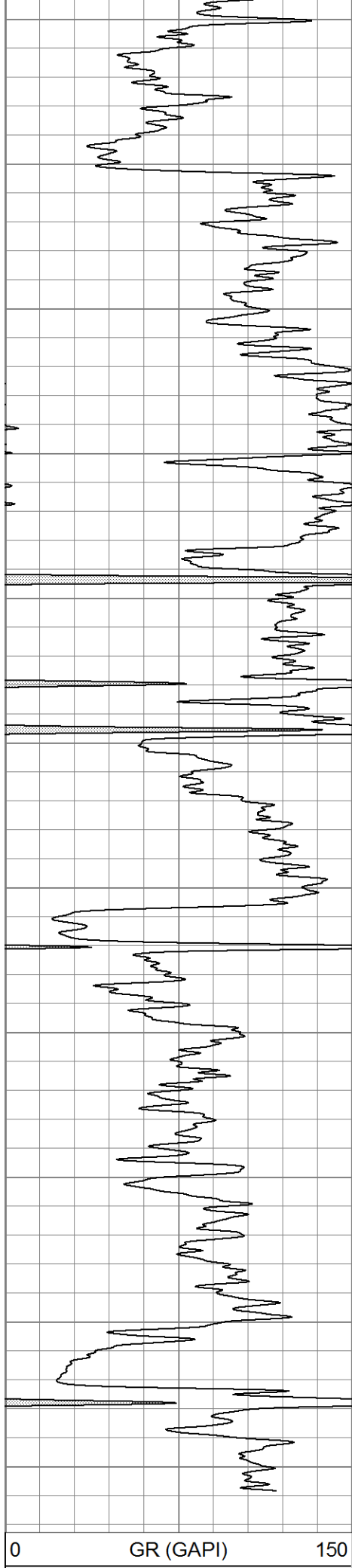
0 GR (GAPI) 150

RLL3 (Ohm-m)

0 RILD (Ohm-m) 50

1000 CILD (mmho/m) 0





0 GR (GAPI) 150

0 RLL3 (Ohm-m) 50

0 RILD (Ohm-m) 50



# 5" DIL SECTION

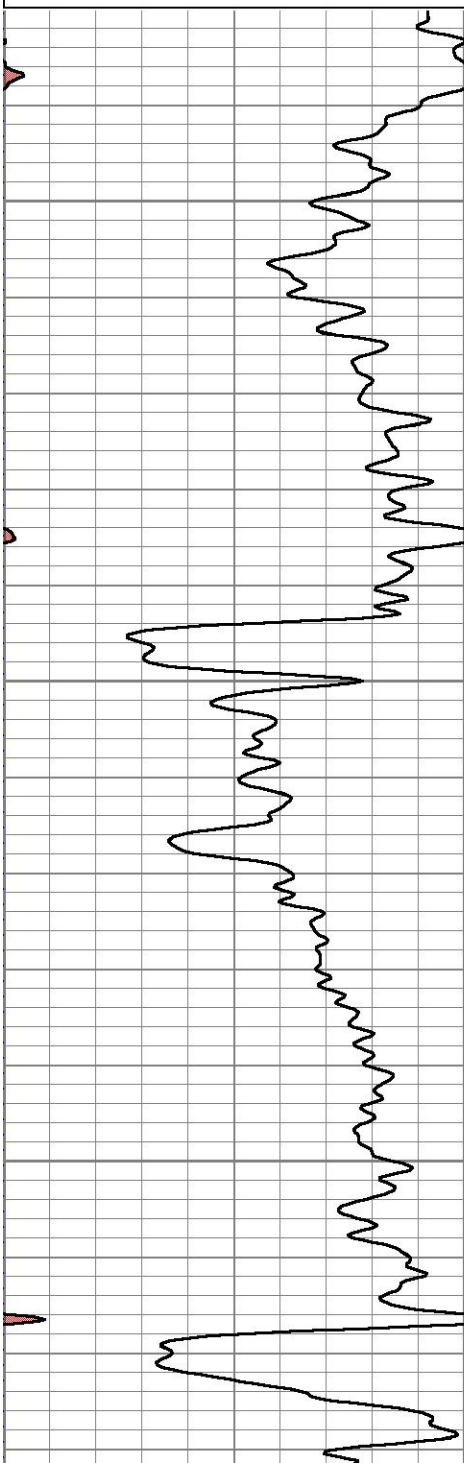
Database File ow2-8690 lr energy.db  
 Dataset Pathname DIL/pass1.2  
 Presentation Format dil5air  
 Dataset Creation Tue Jul 22 17:12:05 2014  
 Charted by Depth in Feet scaled 1:240

0 GR (GAPI) 150

0.2 RILD (Ohm-m) 2000

RLL3 (Ohm-m)

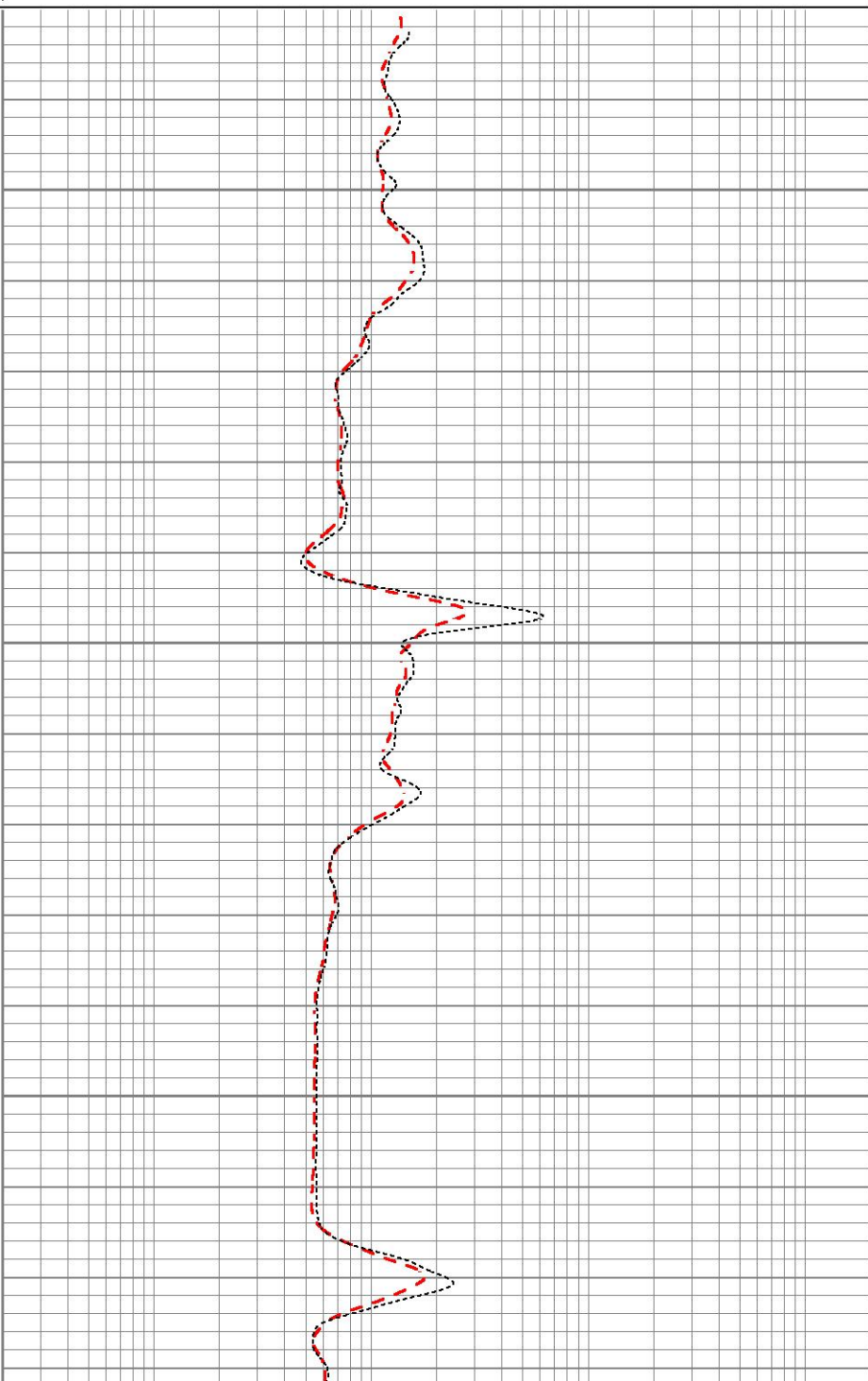
0.2 RILM (Ohm-m) 2000

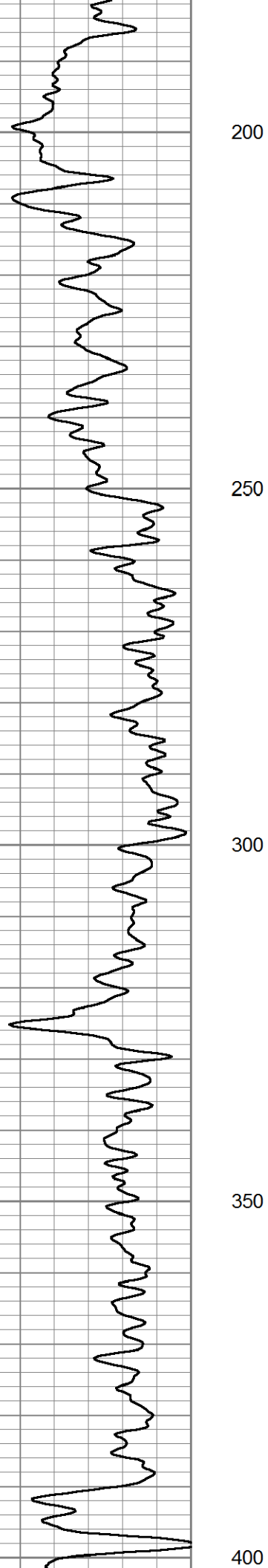


50

100

150





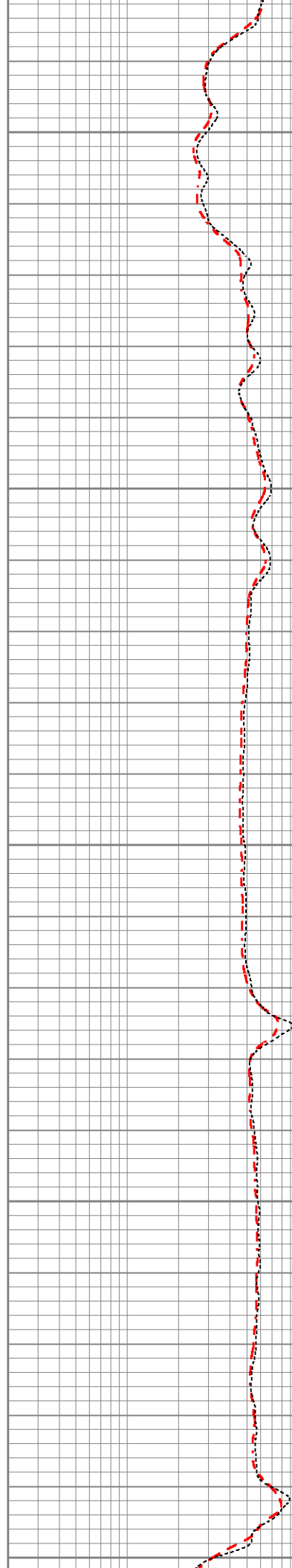
200

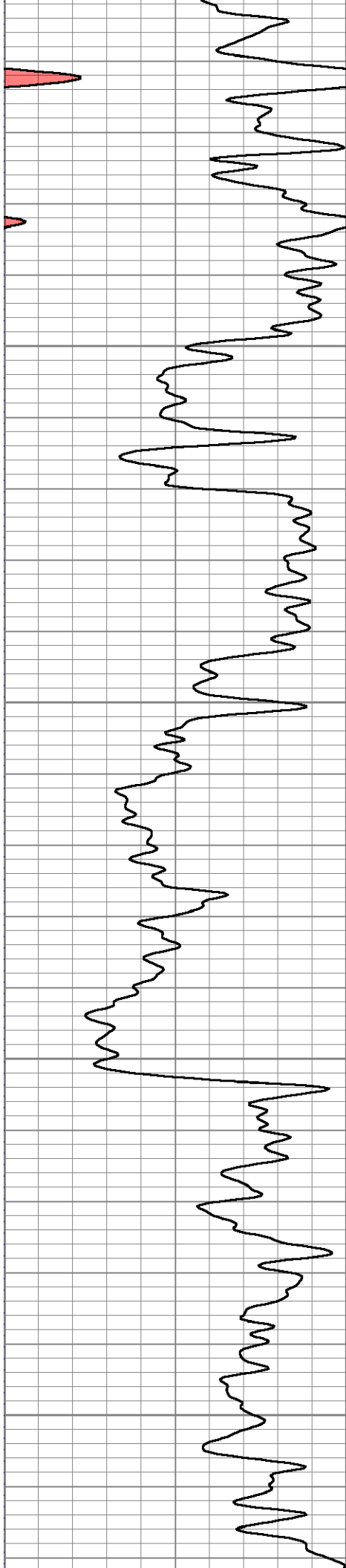
250

300

350

400



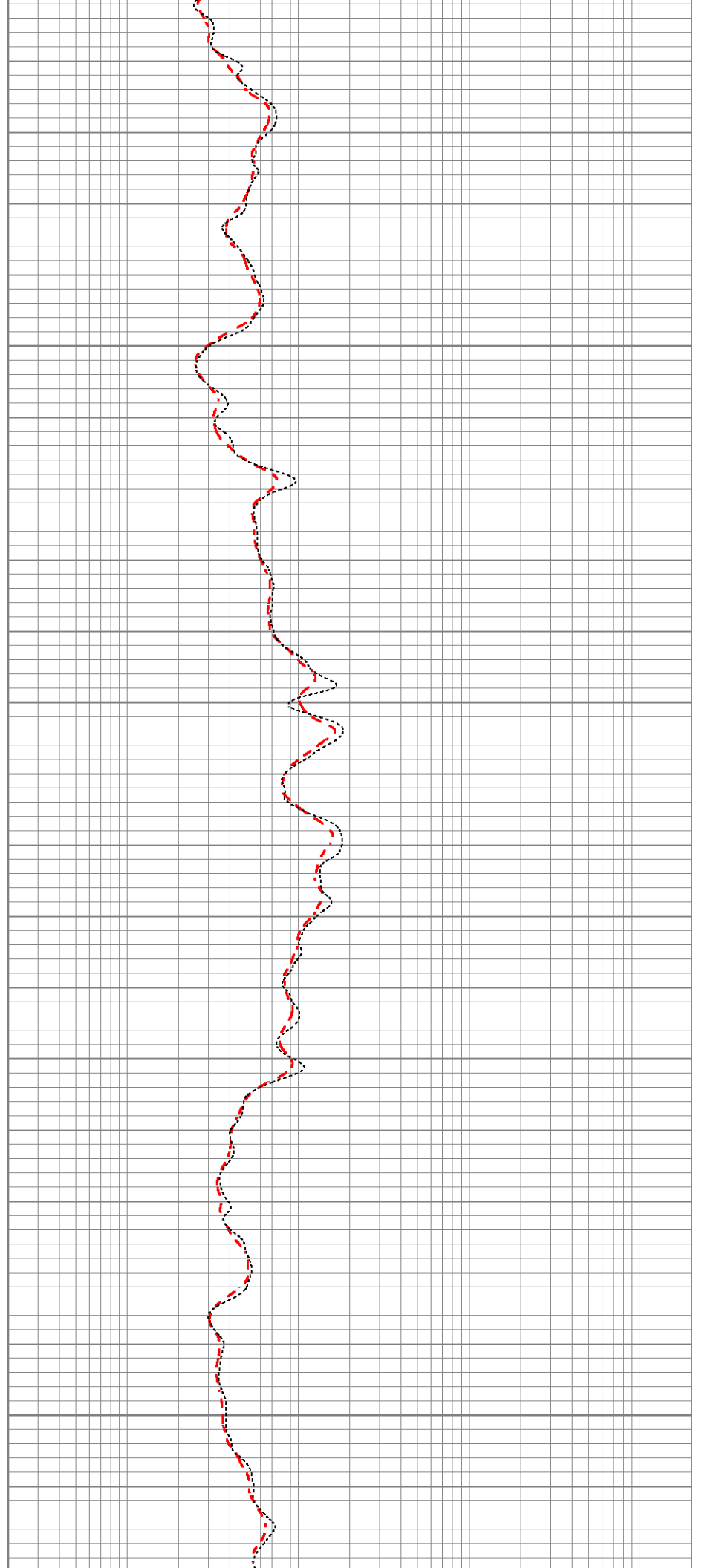


450

500

550

600



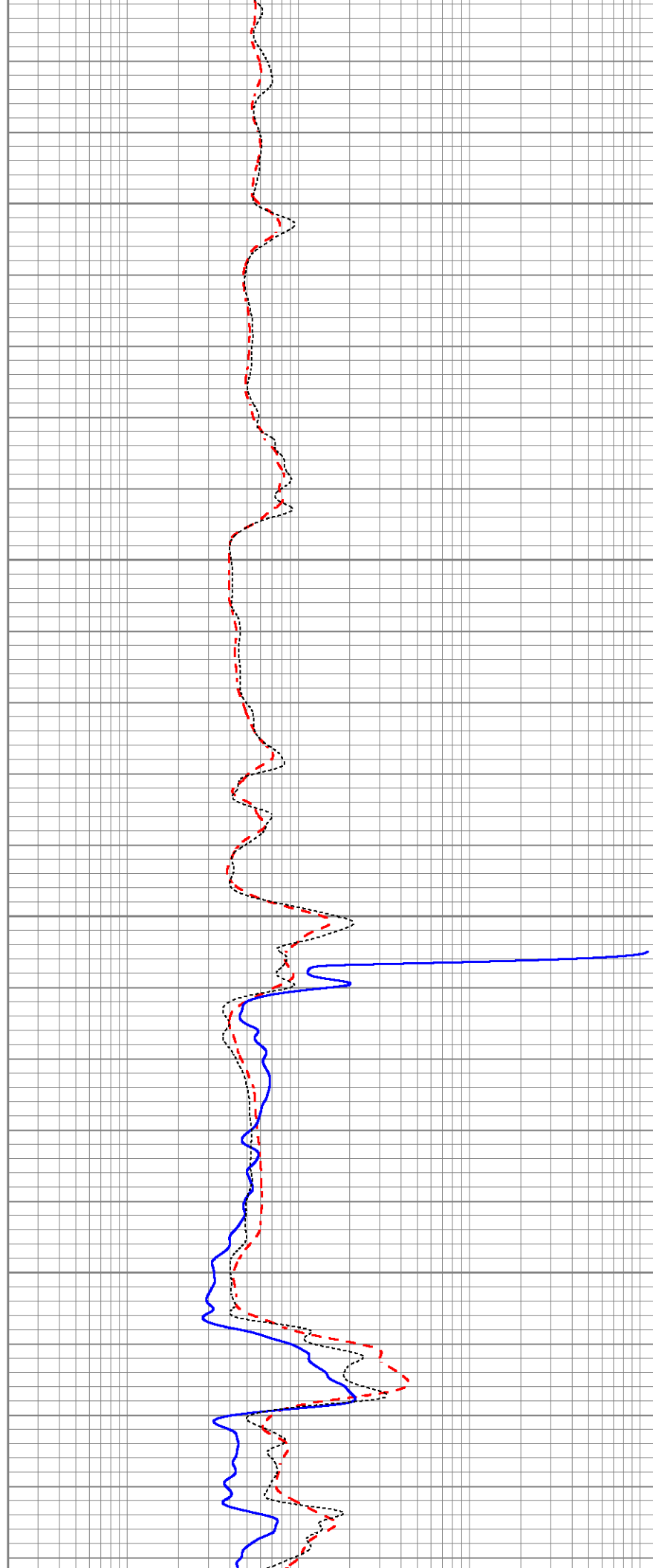


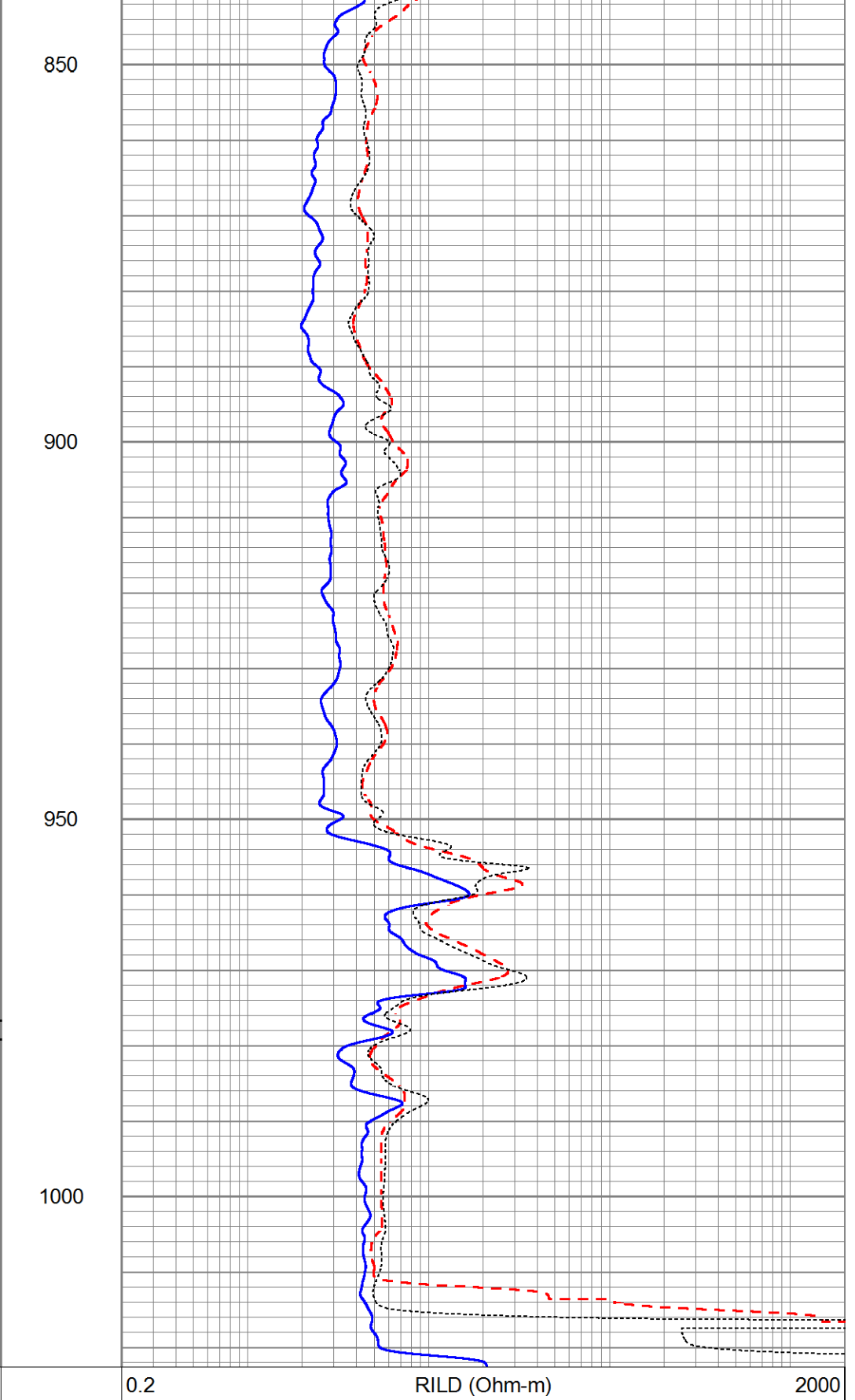
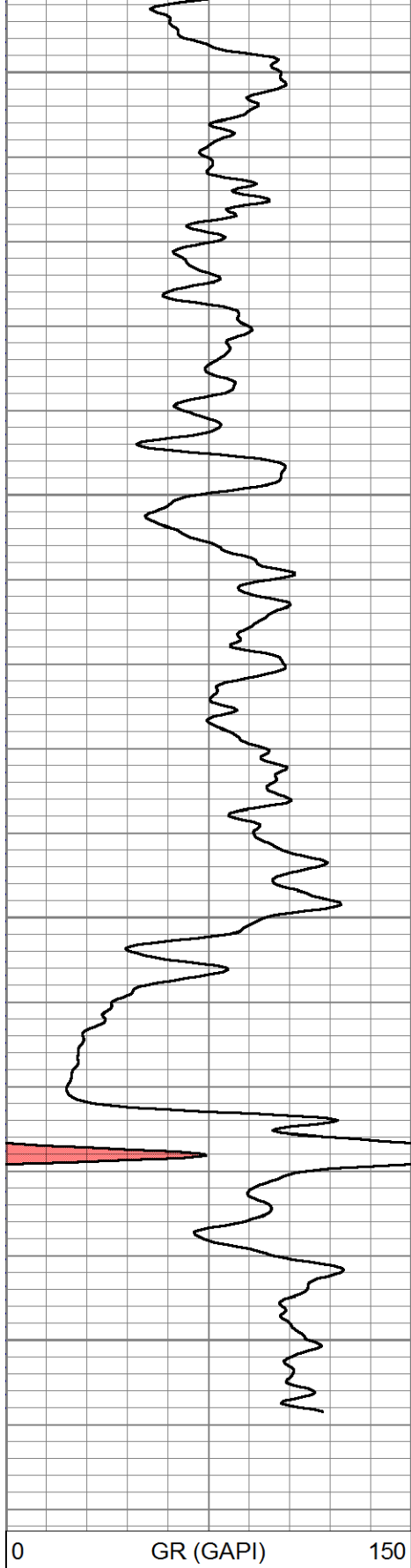
650

700

750

800





0 150


0.2 2000

RILD (Ohm-m)

RLL3 (Ohm-m)

0.2 2000

RILM (Ohm-m)

Sensor	Offset (ft)	Schematic	Description	Length (ft)	O.D. (in)	Weight (lb)
			Cable-CableHead Isulation Sub	1.42	3.00	20.00

SP	10.92					
CILD	10.92		DIL-GEAR (159) Dual Induction Electrical Log	21.36	4.00	345.00

CILM	7.00					
------	------	--	--	--	--	--

RLL3	1.67					
------	------	--	--	--	--	--

Dataset: ow2-8690 lr energy.db: field/well/DIL/pass1  
 Total length: 22.78 ft  
 Total weight: 365.00 lb  
 O.D.: 4.00 in