



**HIGH RESOLUTION
COMPENSATED DENSITY
SIDEWALL NEUTRON LOG**

Company LR ENERGY, INC.
Well GARTNER # 12B-30
Field SORGHUM - HOLLOW
County MONTGOMERY
State KANSAS

Company LR ENERGY, INC.
Well GARTNER # 12B-30
Field SORGHUM - HOLLOW
County MONTGOMERY State KANSAS

Location: AP1 #: 15-125-32411-0000
SW/4
2460' FSL & 180' FWL
SEC 30 TWP 32S RGE 14E
Permanent Datum GL Elevation 872' est
Log Measured From GL
Drilling Measured From GL
Other Services
DIL
Elevation
K.B. ---
D.F. ---
G.L. 872' est

Date	7-22-2014
Run Number	ONE
Depth Driller	1022'
Depth Logger	1023'
Bottom Logged Interval	1021'
Top Log Interval	SURFACE
Casing Driller	8 5/8" @ 21.8'
Casing Logger	8 5/8" @ 21.8'
Bit Size	6 3/4"
Type Fluid in Hole	WATER
Density / Viscosity	
pH / Fluid Loss	
Source of Sample	
Rm @ Meas. Temp	
Rmf @ Meas. Temp	
Rmc @ Meas. Temp	
Source of Rmf / Rmc	
Rm @ BHT	
Time Circulation Stopped	
Time Logger on Bottom	
Maximum Recorded Temperature	
Equipment Number	OW2
Location	HOMINY, OK
Recorded By	LOWERY
Witnessed By	MR. BARKMAN

<<< Fold Here >>>

All interpretations are opinions based on inferences from electrical or other measurements and we cannot and do not guarantee the accuracy or correctness of any interpretation, and we shall not, except in the case of gross or willful negligence on our part, be liable or responsible for any loss, costs, damages, or expenses incurred or sustained by anyone resulting from any interpretation made by any of our officers, agents or employees. These interpretations are also subject to our general terms and conditions set out in our current Price Schedule.

Comments

OW2-8690
MATRIX LIMESTONE 2.71 G/CC
ABHV COMPUTED WITH 4 1/2" CASING

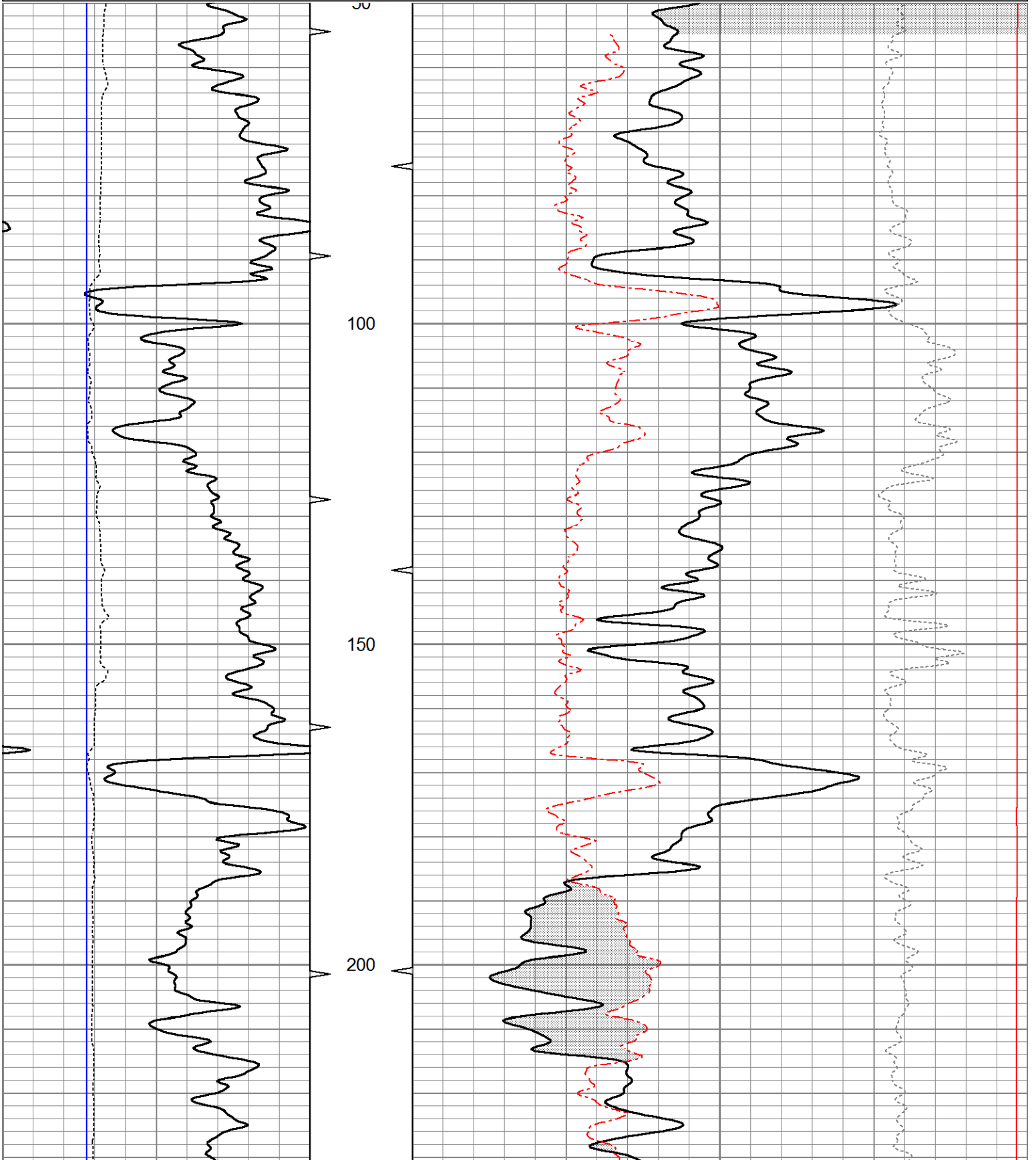
CREW : SHAMBLES

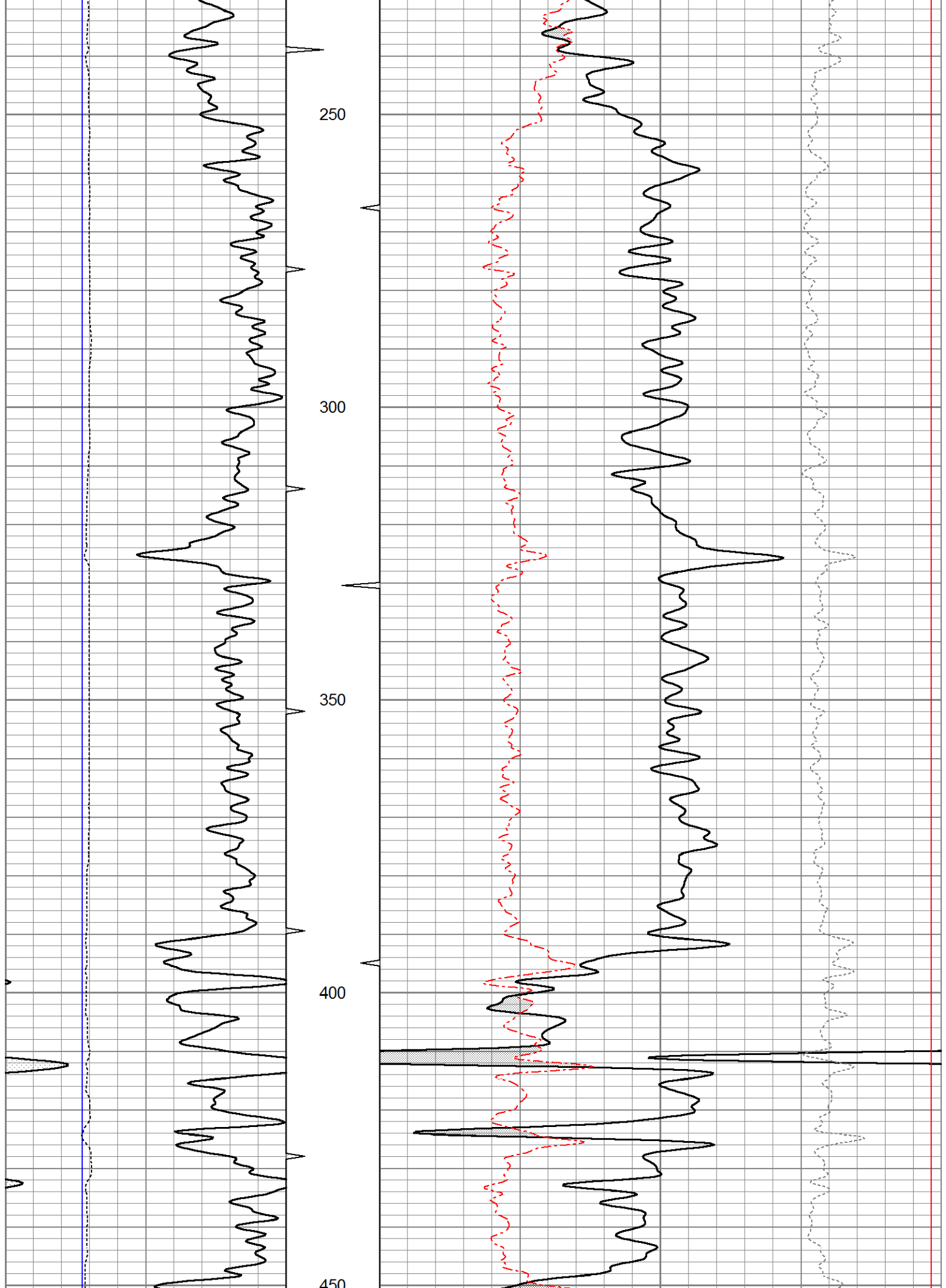


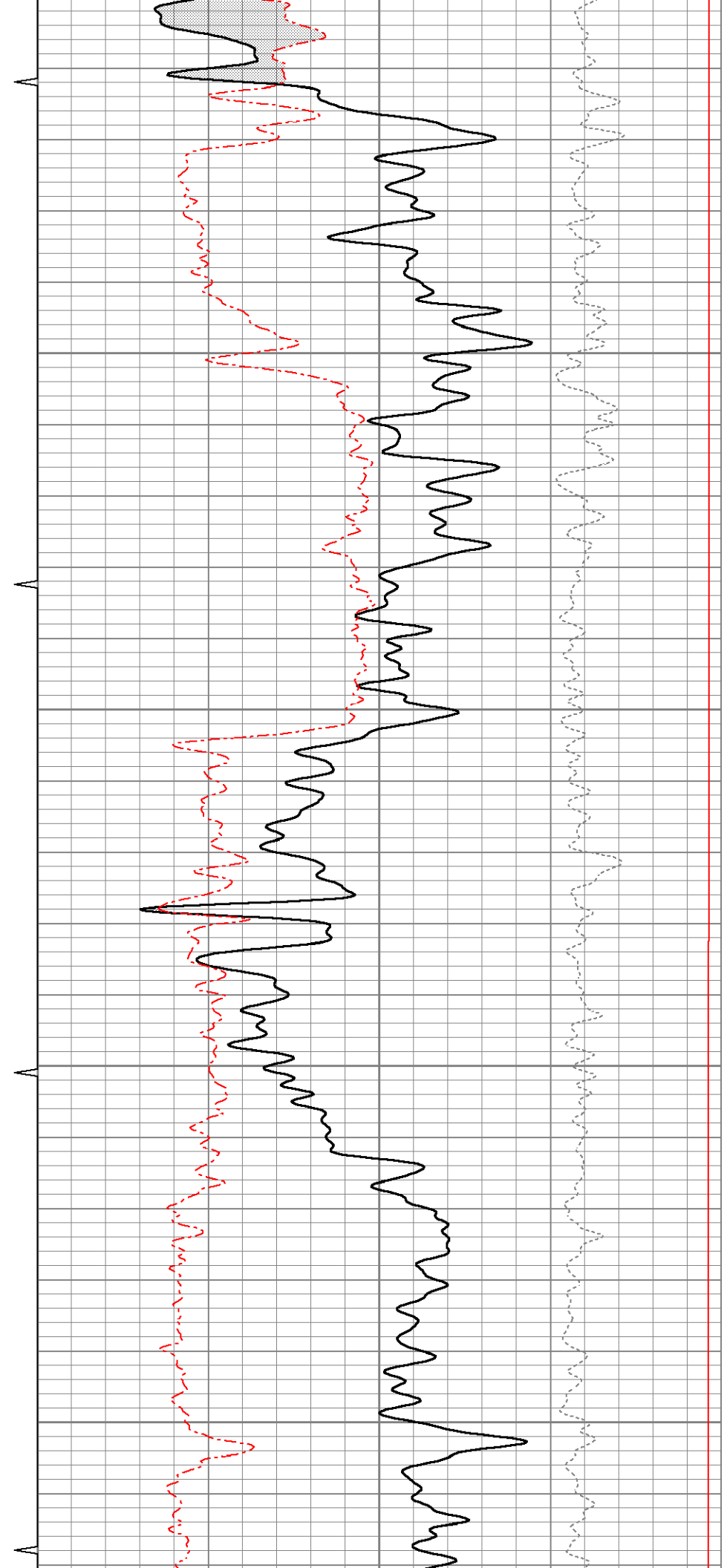
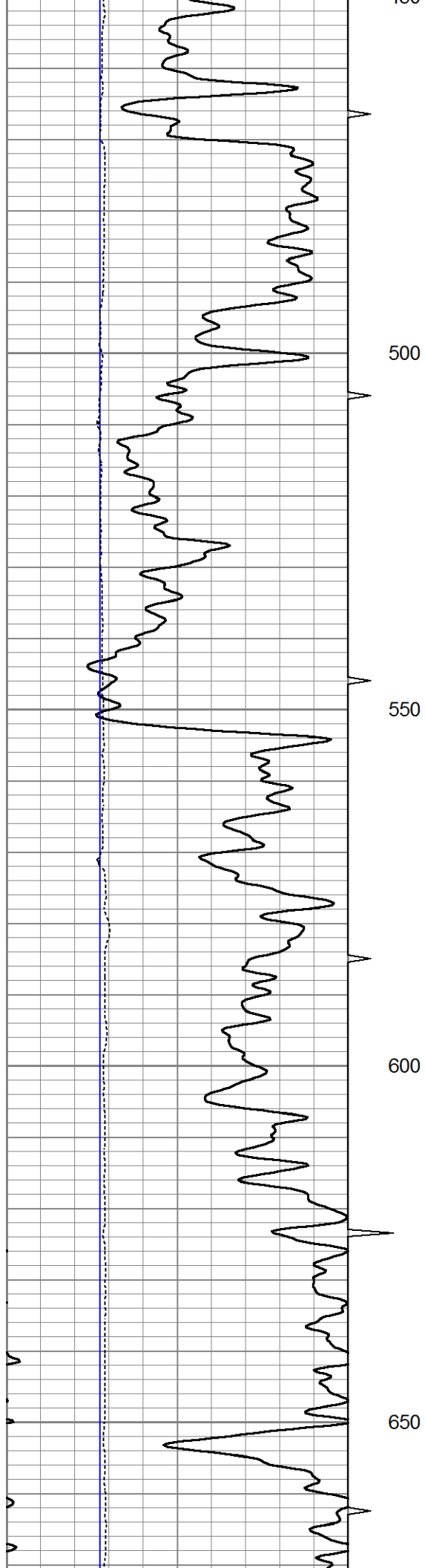
5" CDL/SWN SECTION

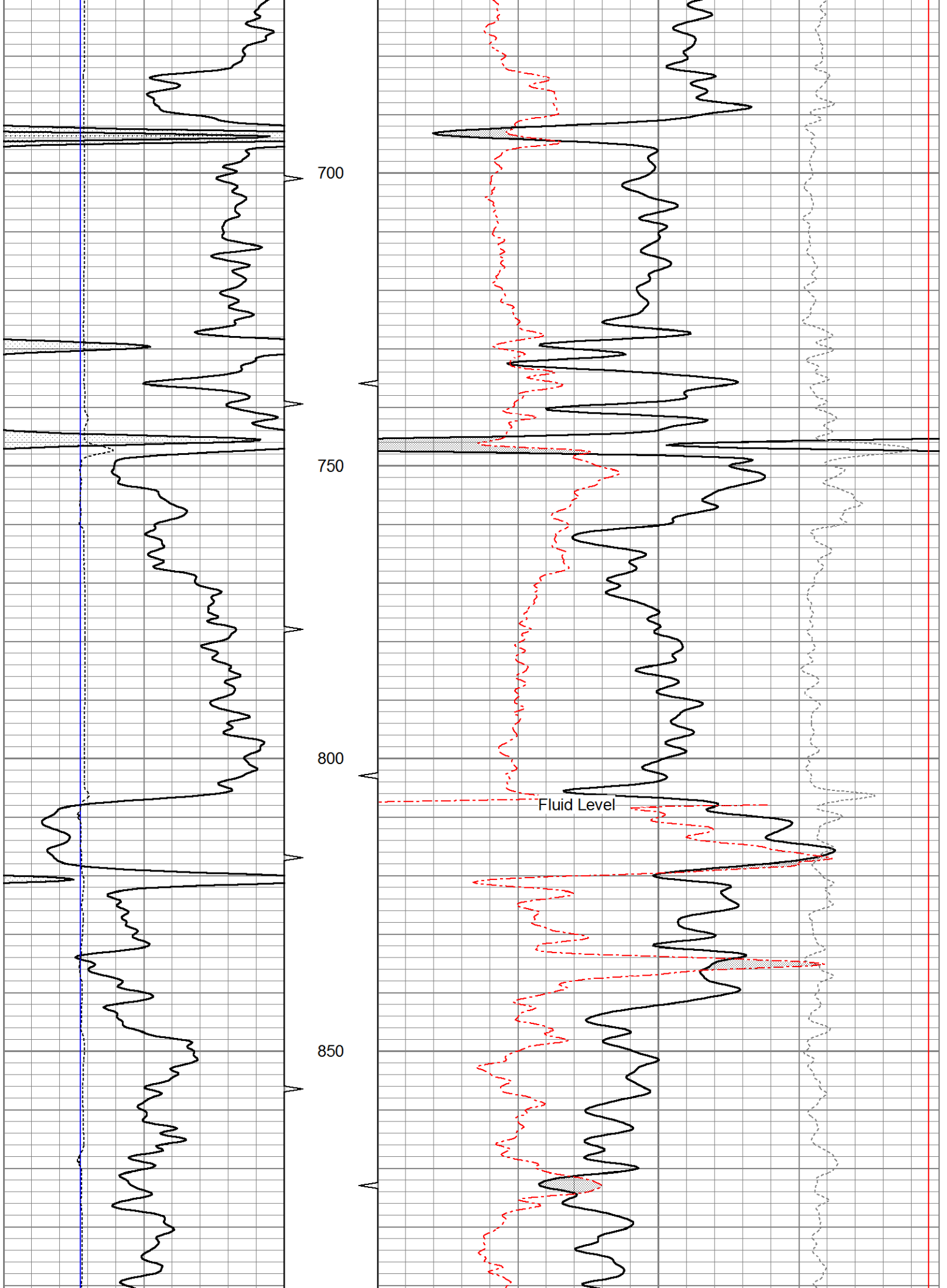
Database File ow2-8690 lr energy.db
 Dataset Pathname CDL/pass1.3
 Presentation Format _neu4
 Dataset Creation Tue Jul 22 16:49:00 2014
 Charted by Depth in Feet scaled 1:240

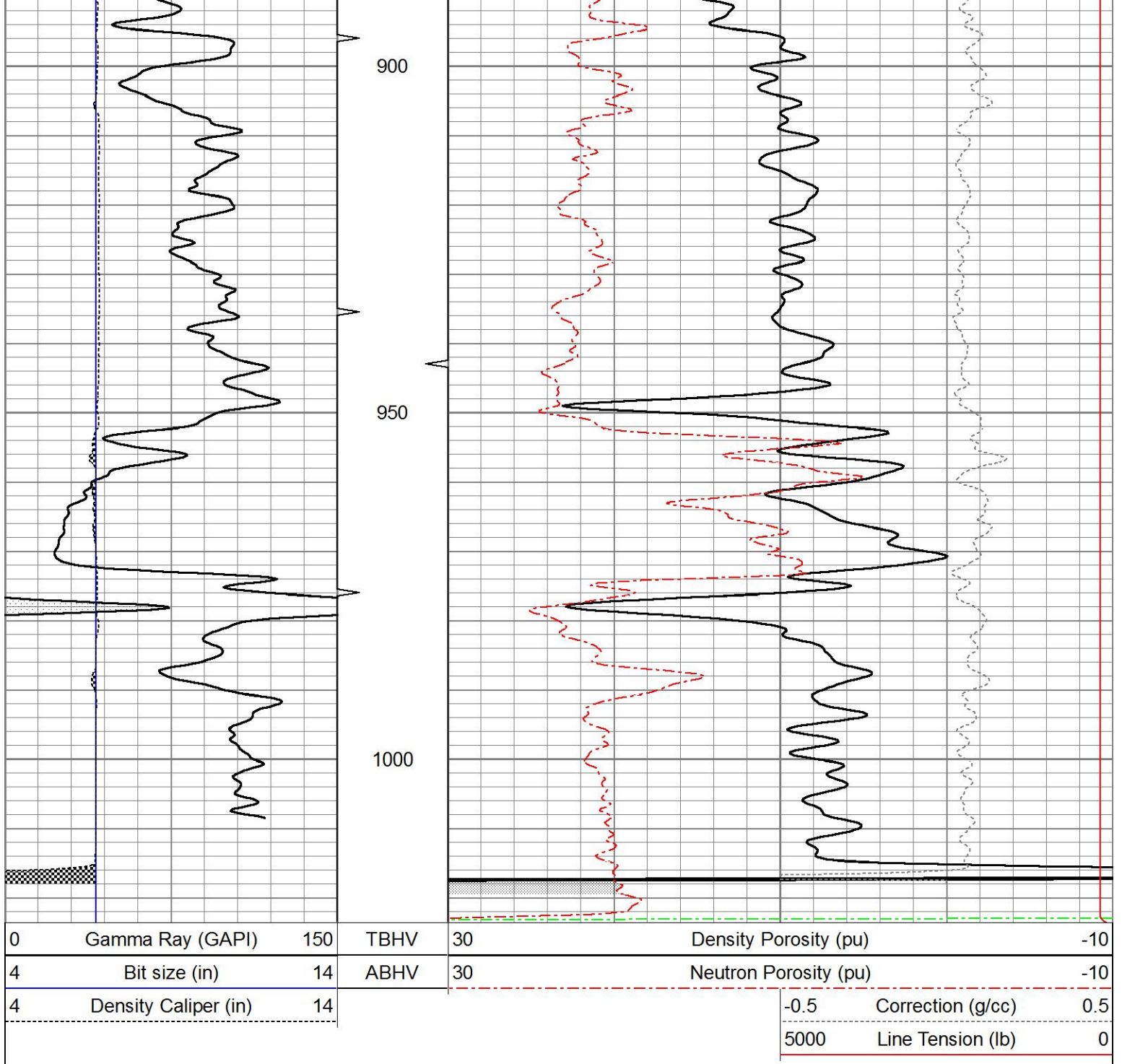
0	Gamma Ray (GAPI)	150	TBHV	30	Density Porosity (pu)	-10
4	Bit size (in)	14	ABHV	30	Neutron Porosity (pu)	-10
4	Density Caliper (in)	14			-0.5	Correction (g/cc) 0.5
					5000	Line Tension (lb) 0







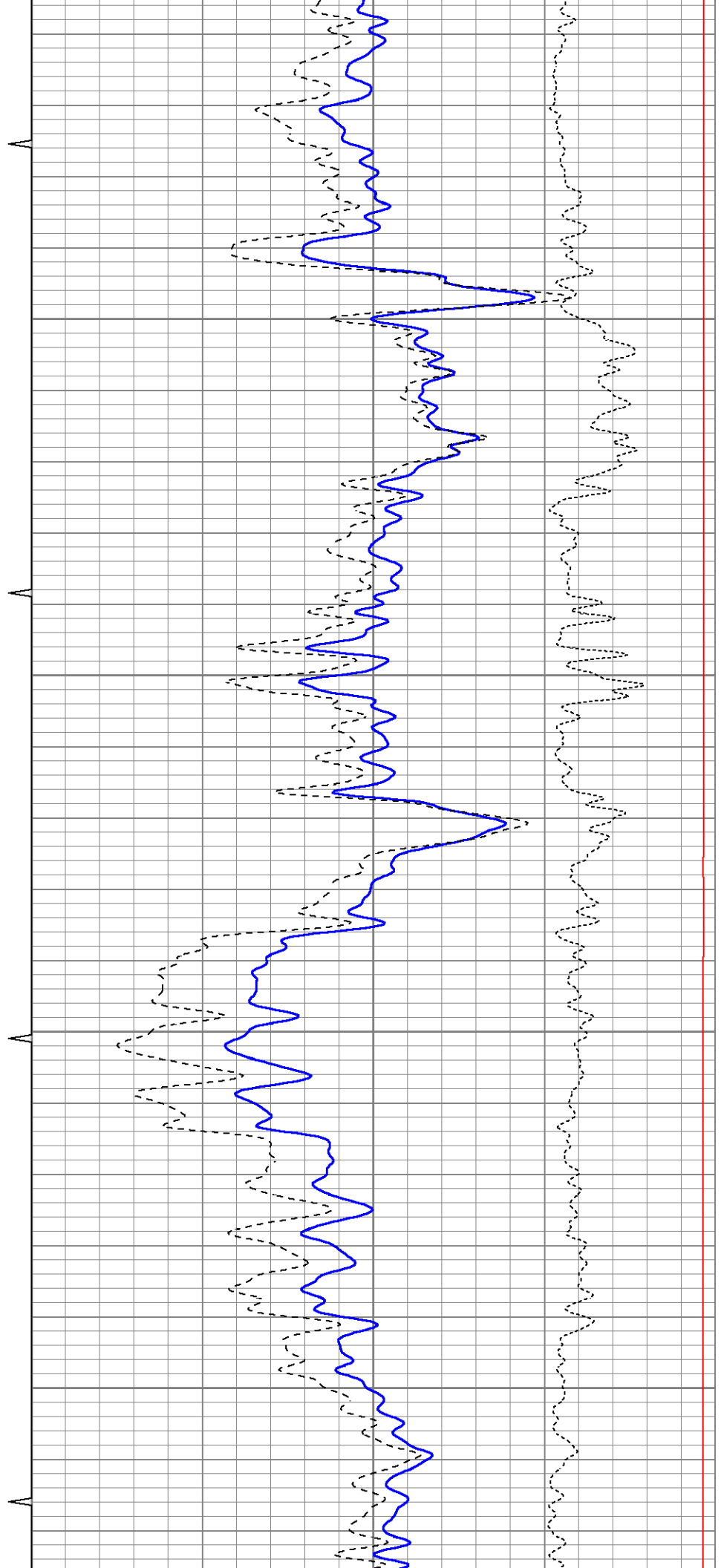
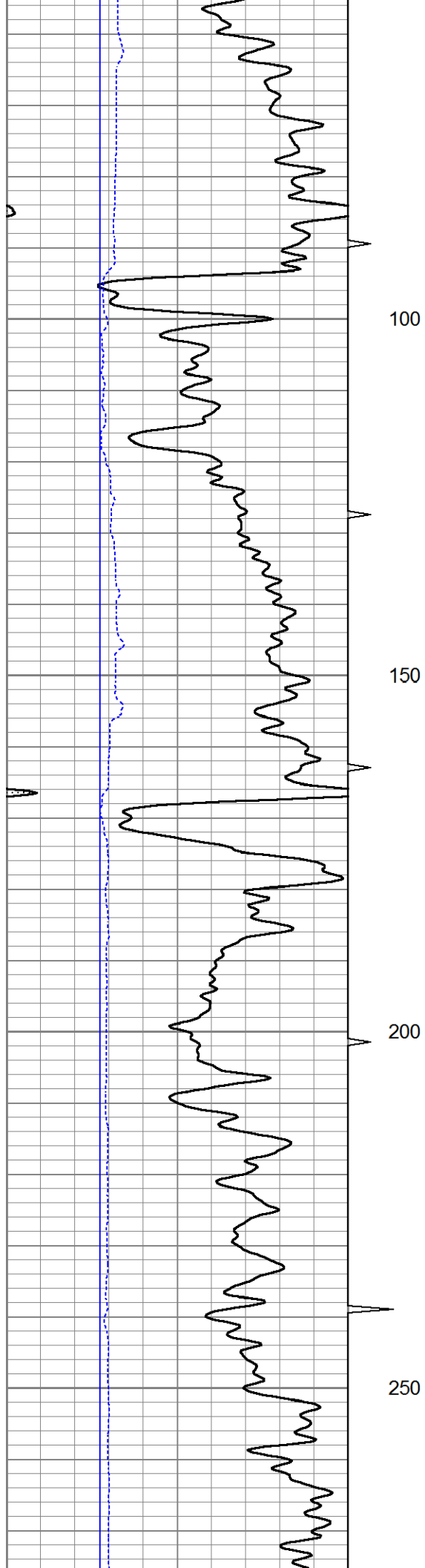


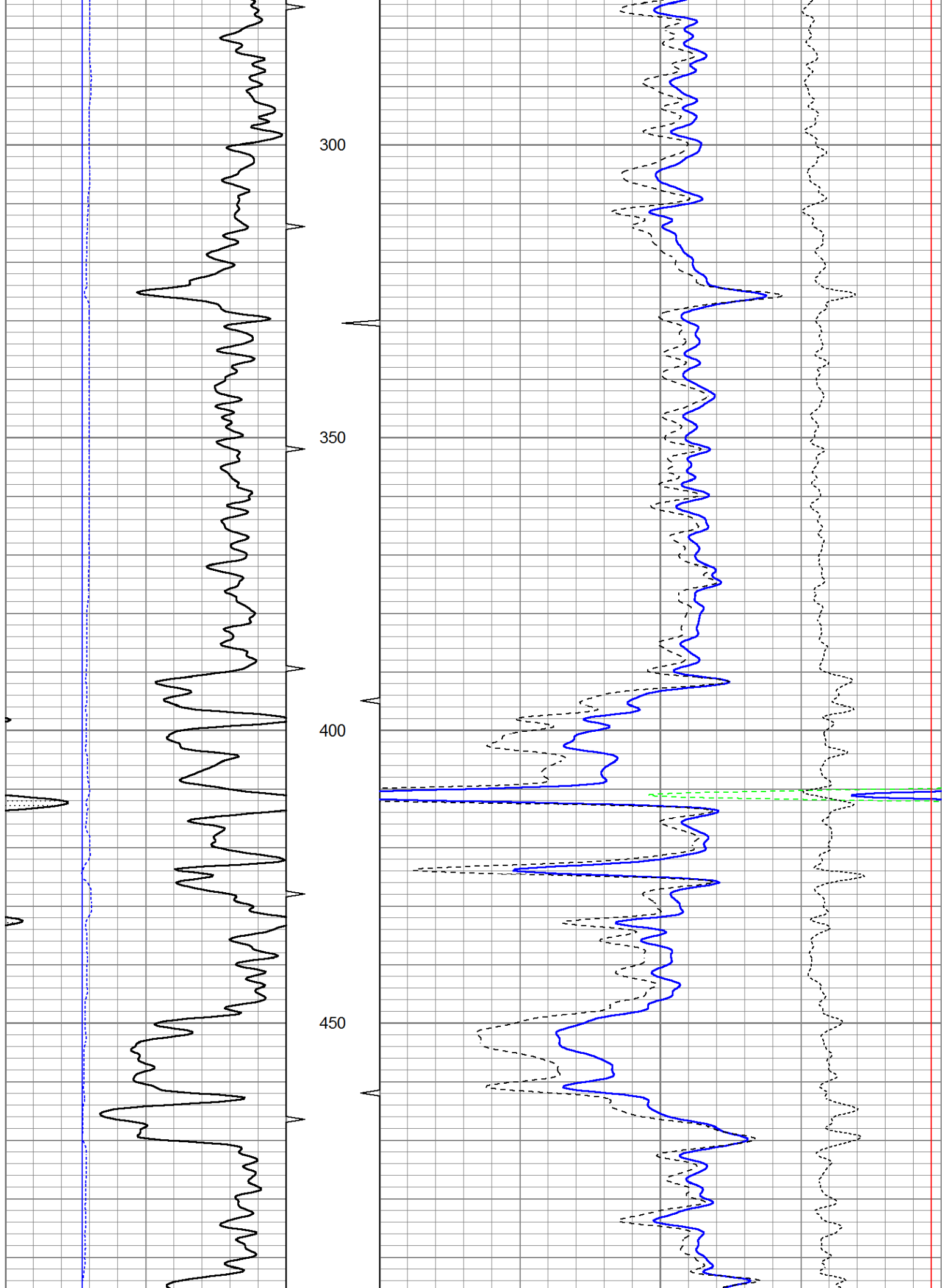


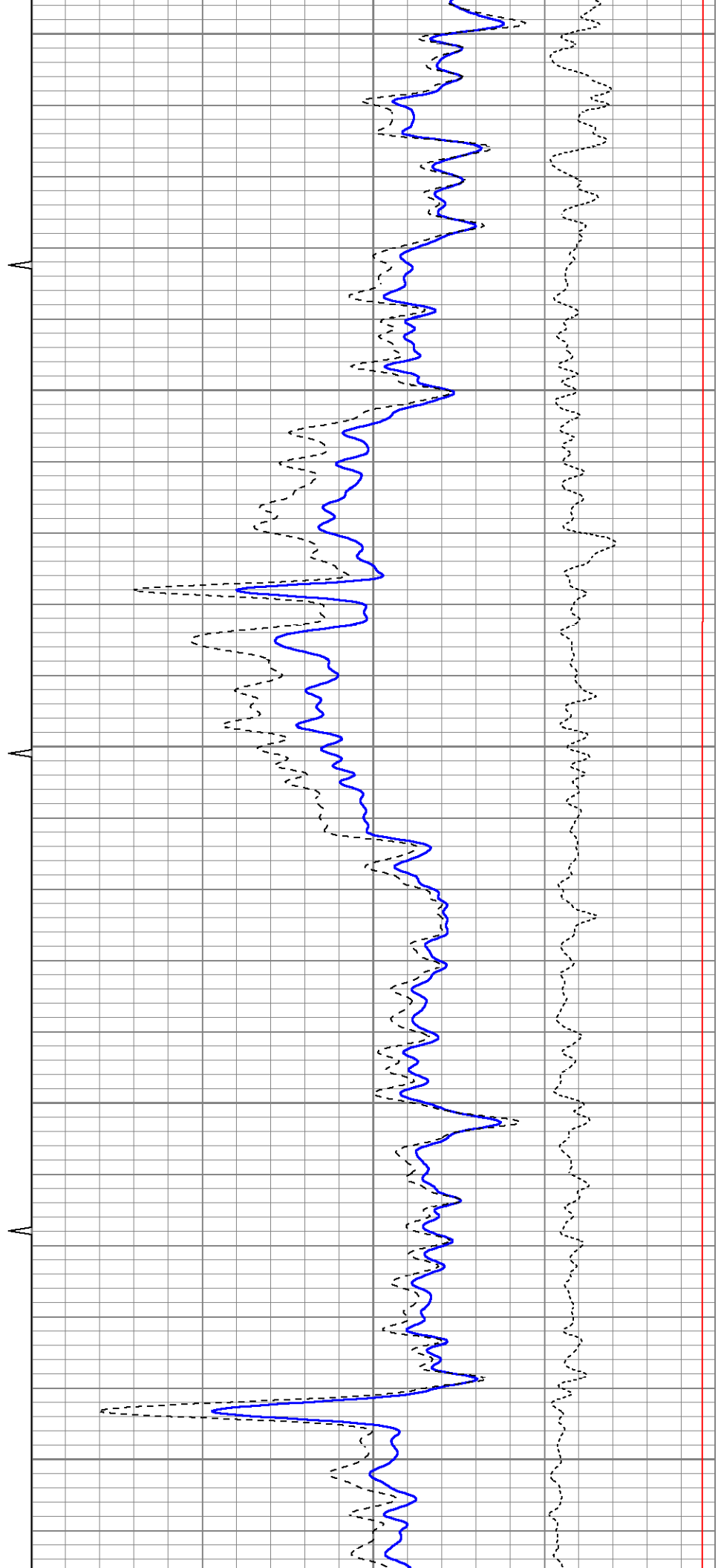
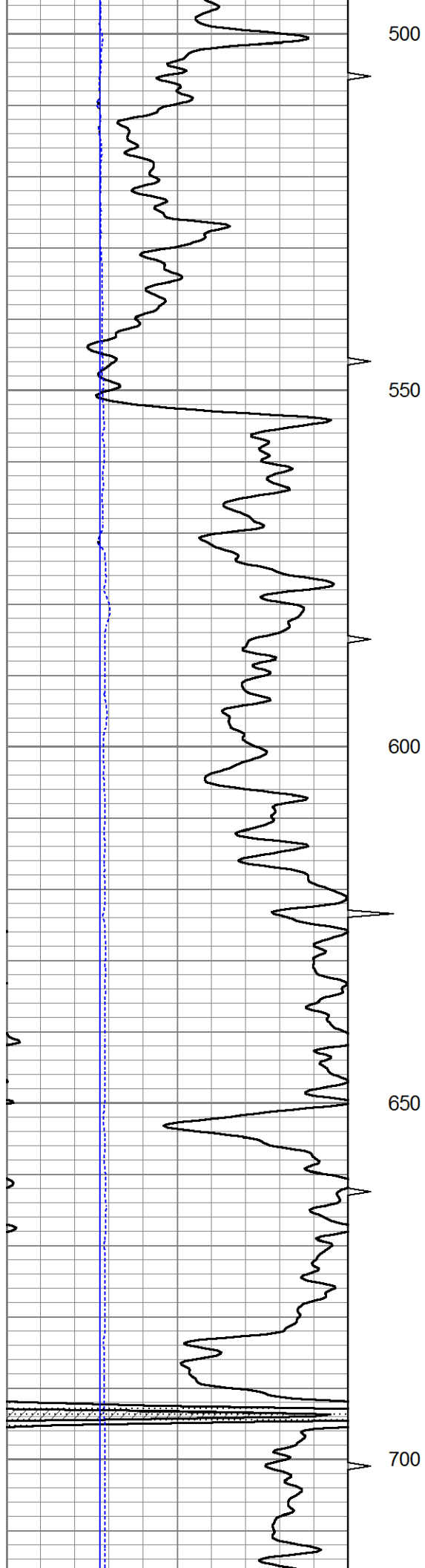
5" CDL SECTION

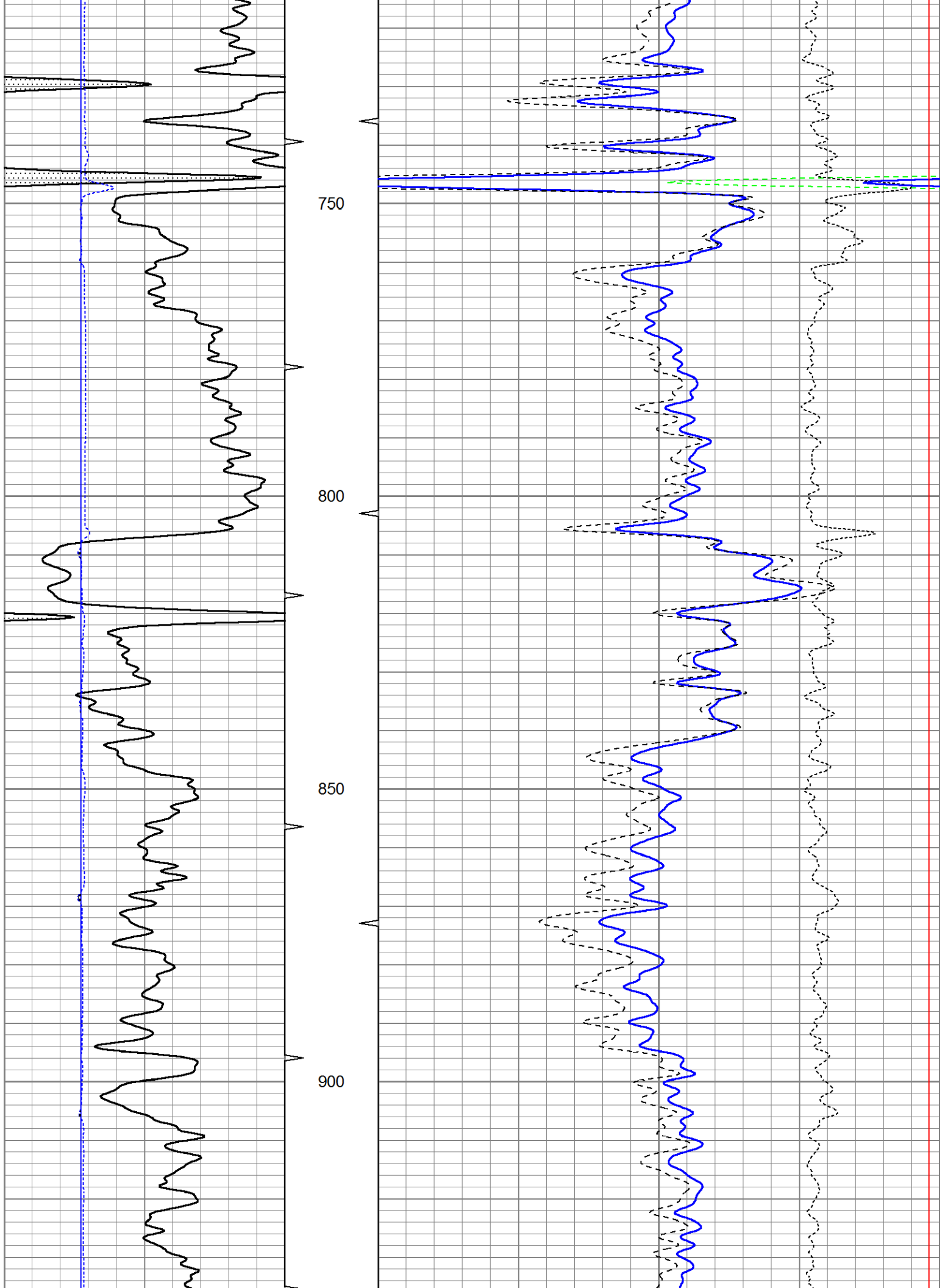
Database File ow2-8690 lr energy.db
 Dataset Pathname CDL/pass1.2
 Presentation Format bulk4
 Dataset Creation Tue Jul 22 16:48:07 2014
 Charted by Depth in Feet scaled 1:240

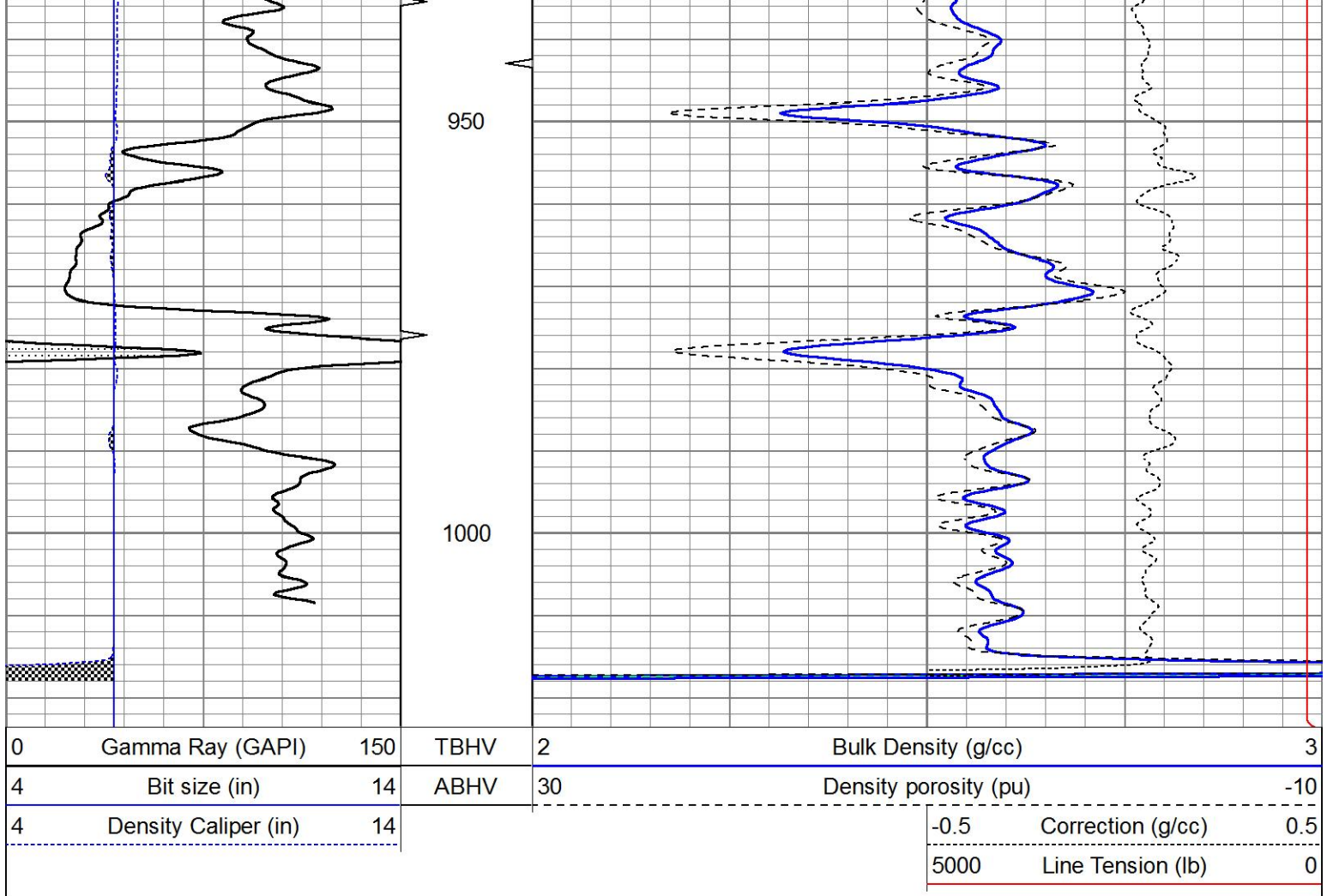
0	Gamma Ray (GAPI)	150	TBHV	2	Bulk Density (g/cc)	3
4	Bit size (in)	14	ABHV	30	Density porosity (pu)	-10
4	Density Caliper (in)	14			-0.5	Correction (g/cc) 0.5
					5000	Line Tension (lb) 0





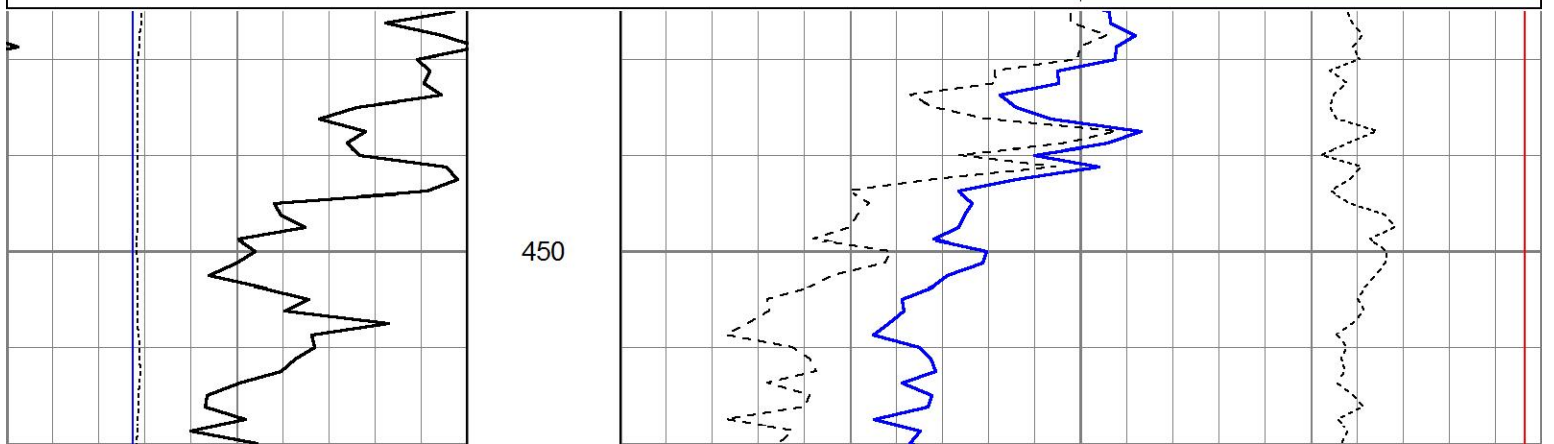
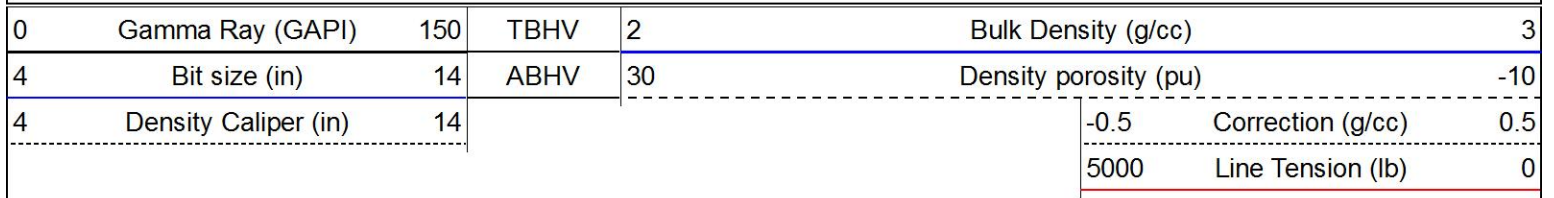


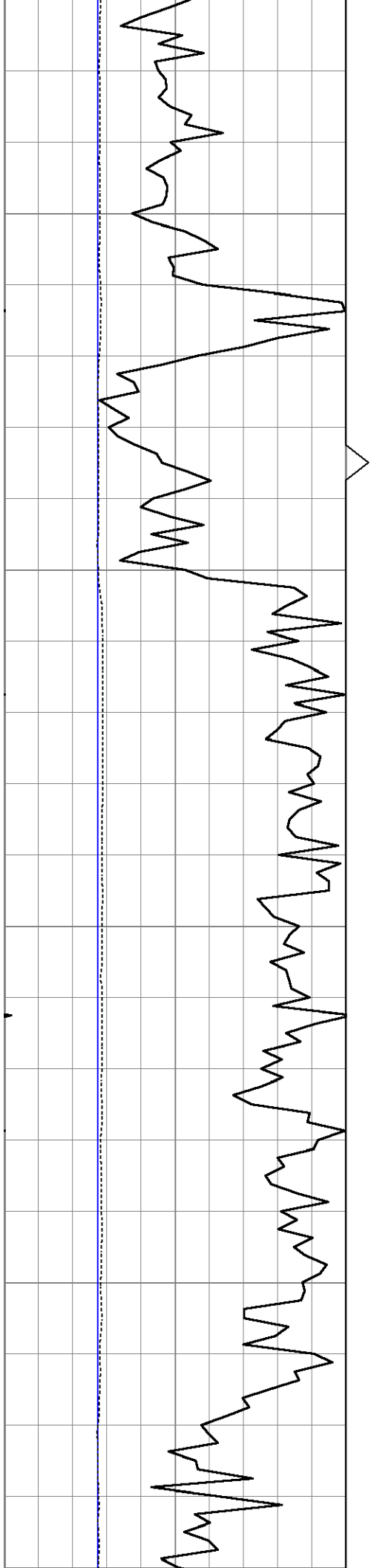




25" HR CDL SECTION

Database File ow2-8690 lr energy.db
 Dataset Pathname CDL/pass1.4
 Presentation Format bulk4hr
 Dataset Creation Tue Jul 22 16:49:12 2014
 Charted by Depth in Feet scaled 1:48



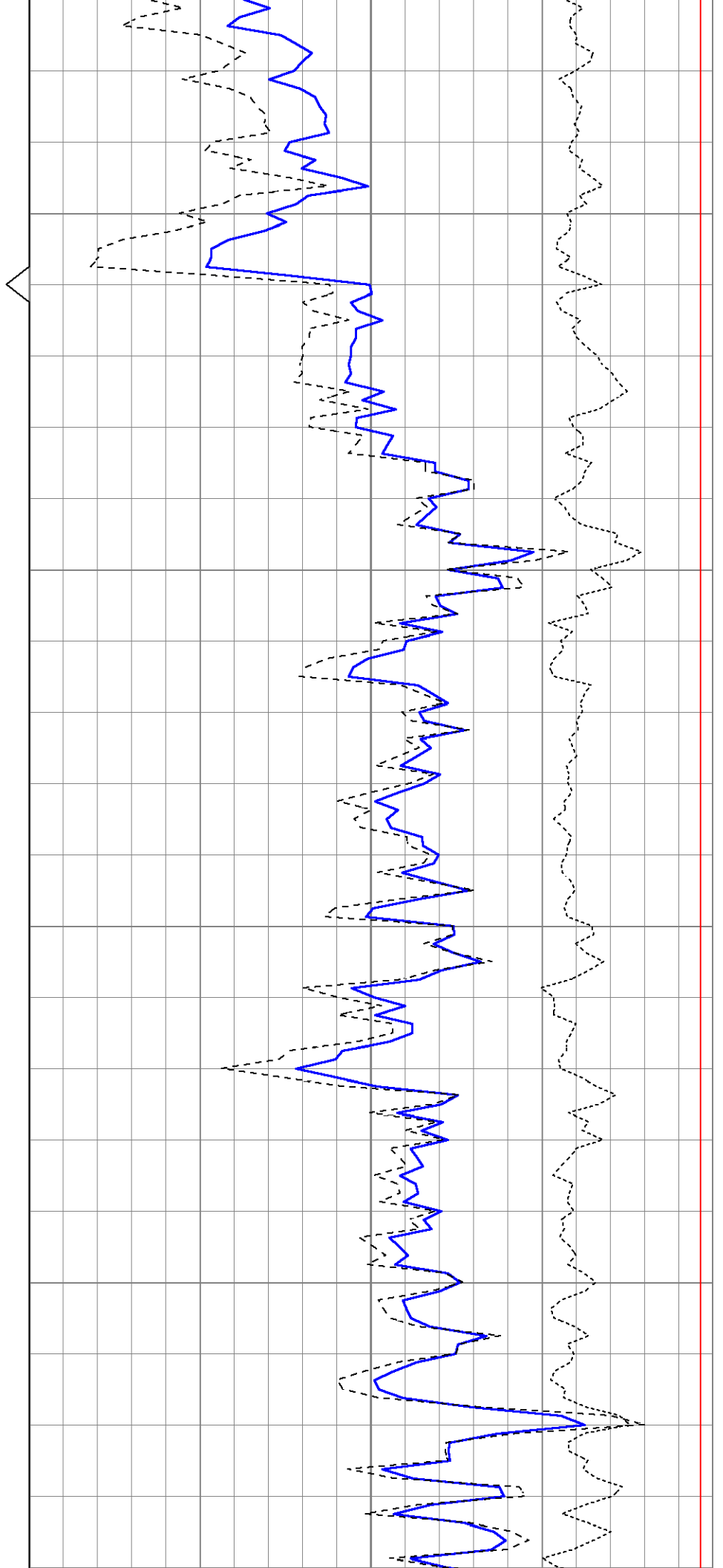


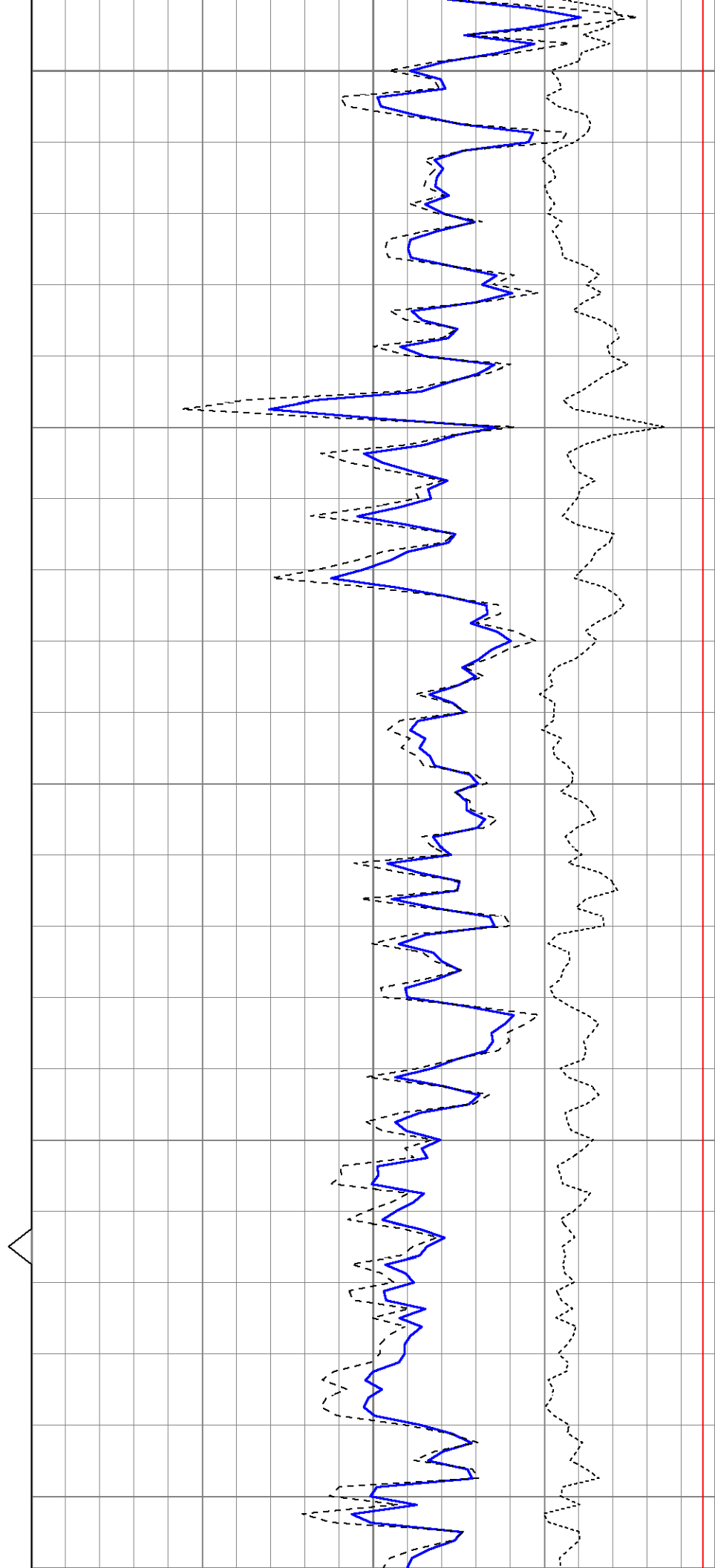
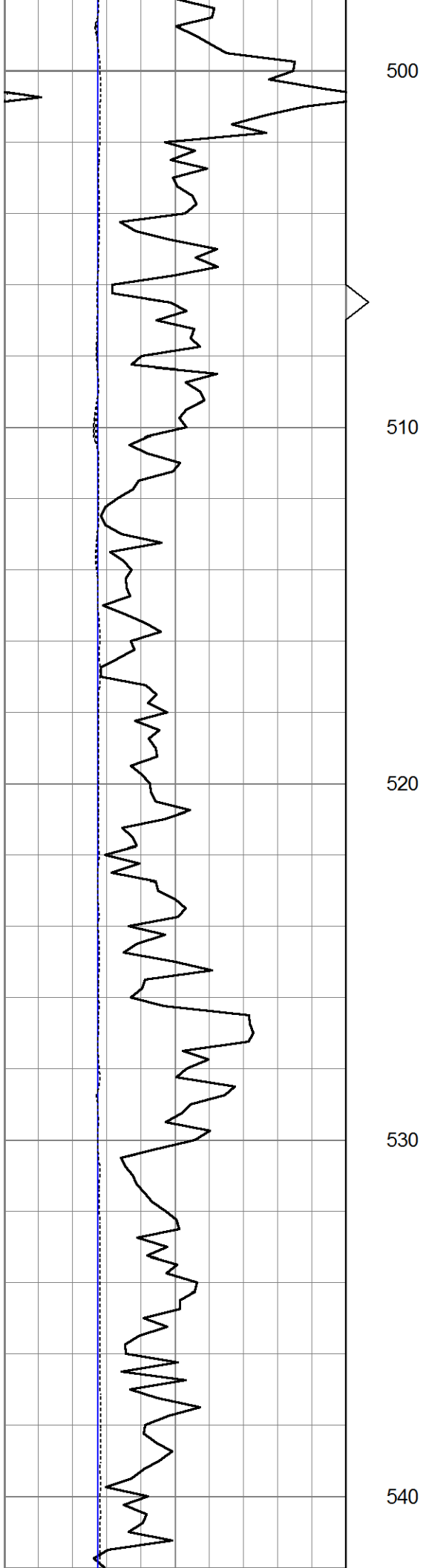
460

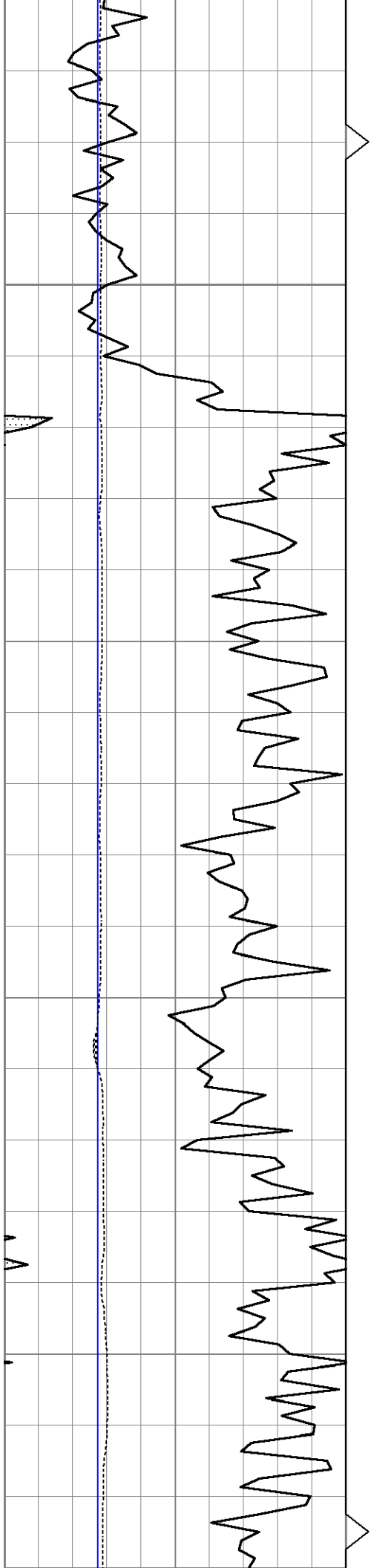
470

480

490





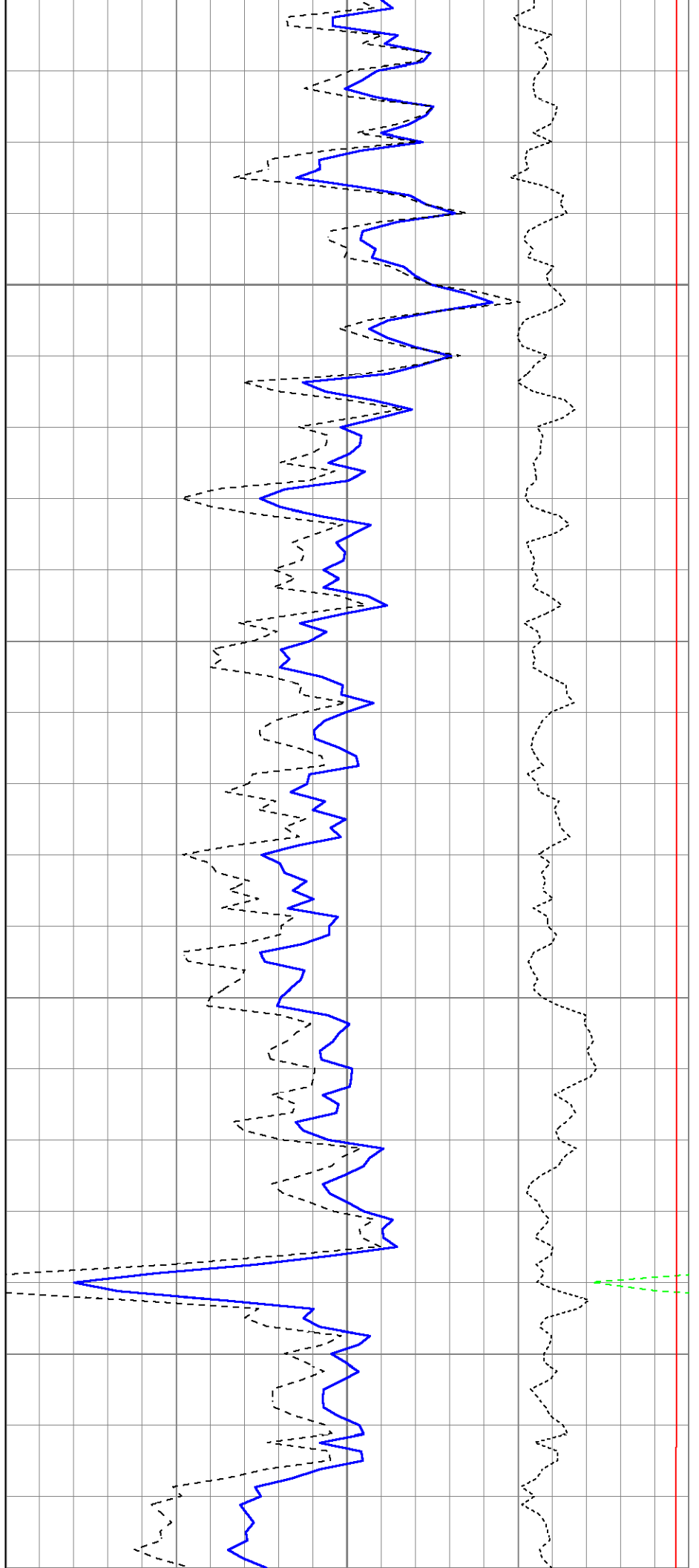


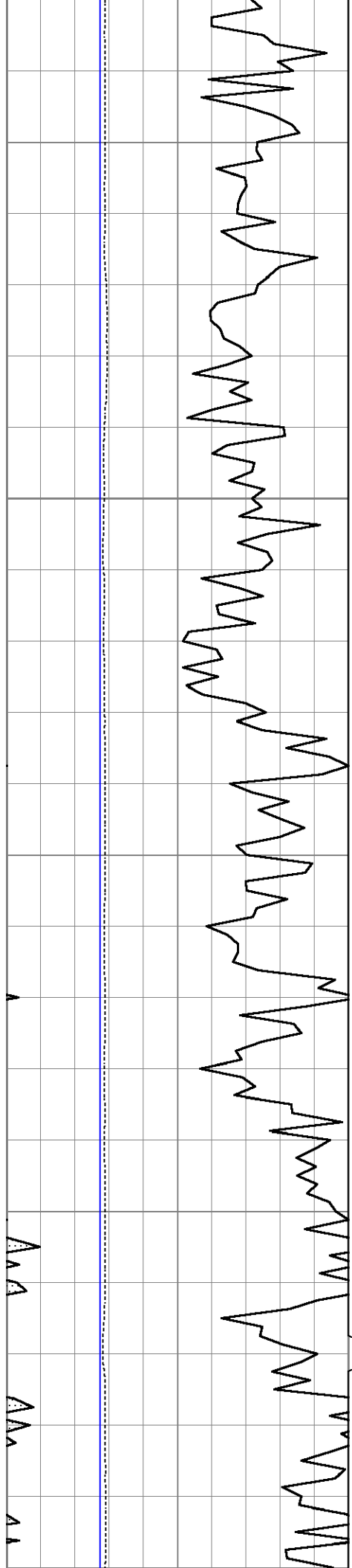
550

560

570

580





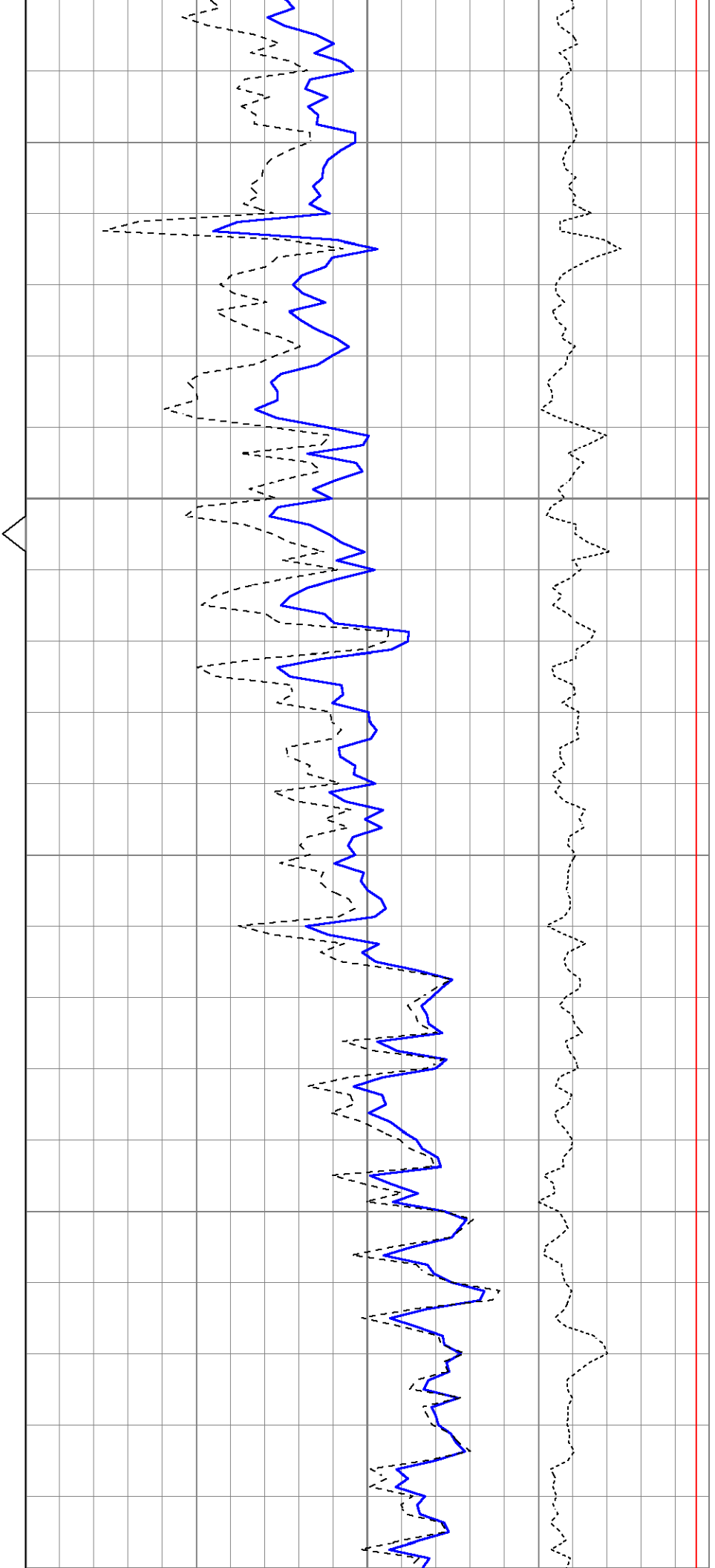
590

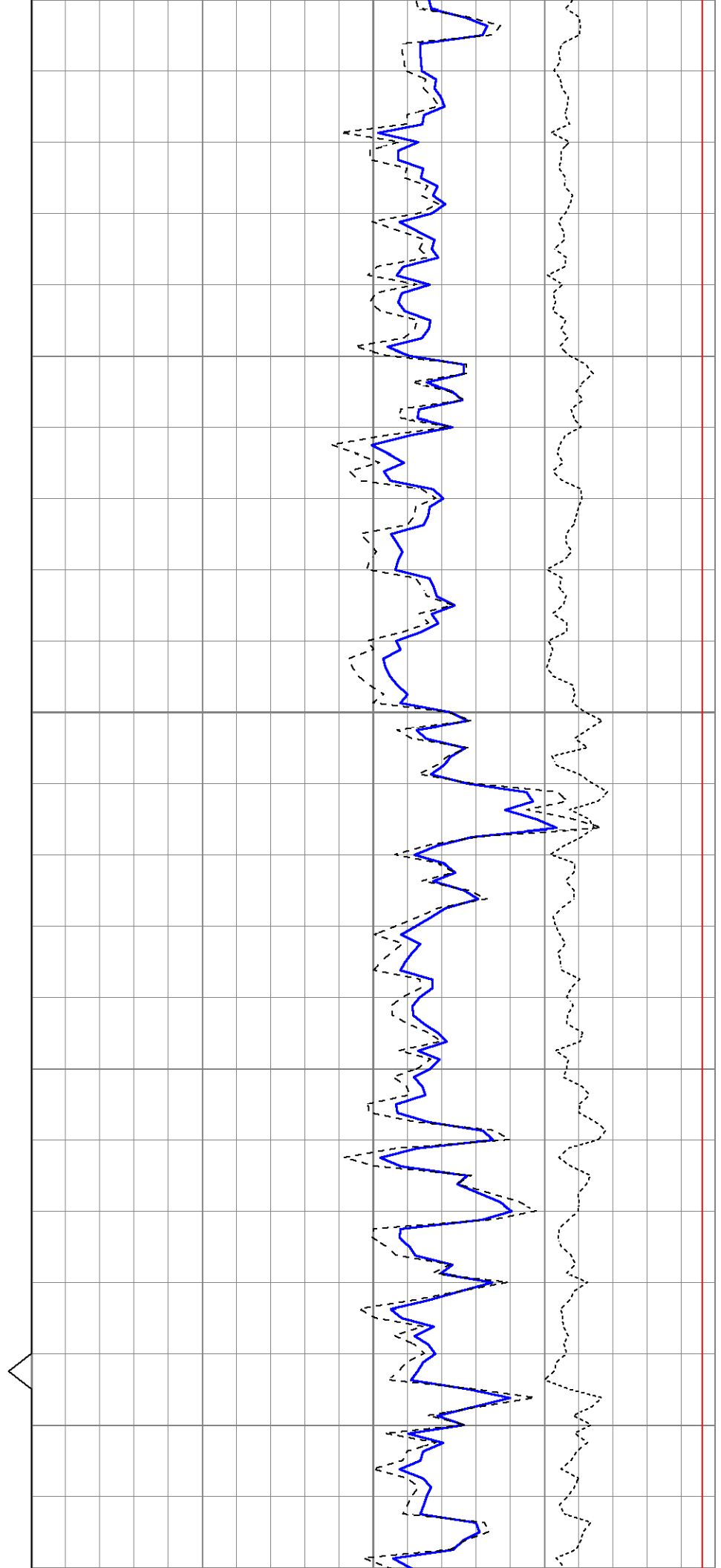
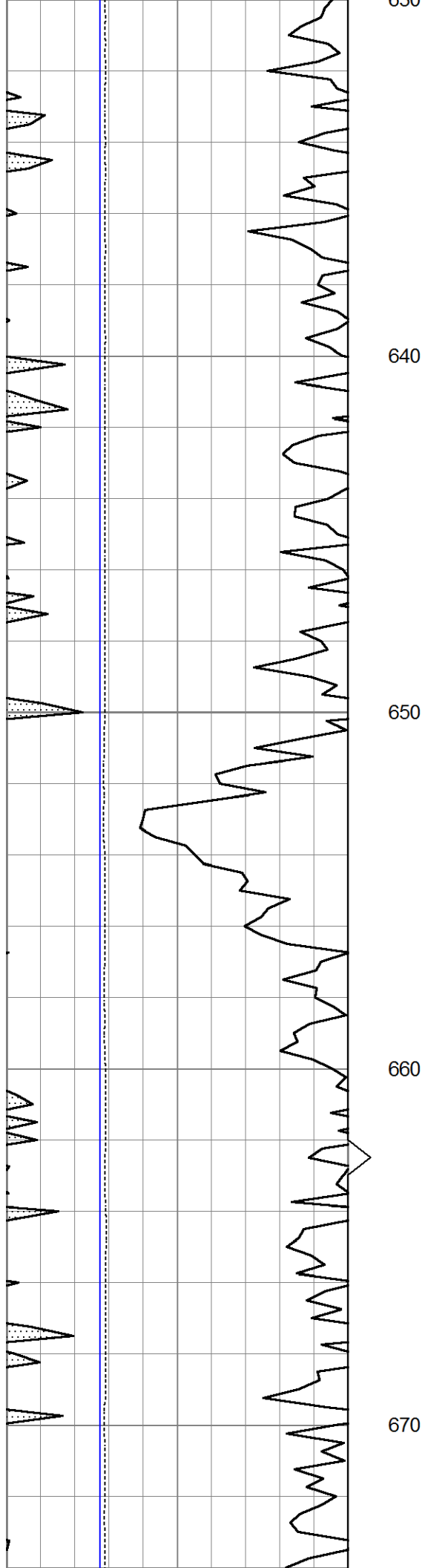
600

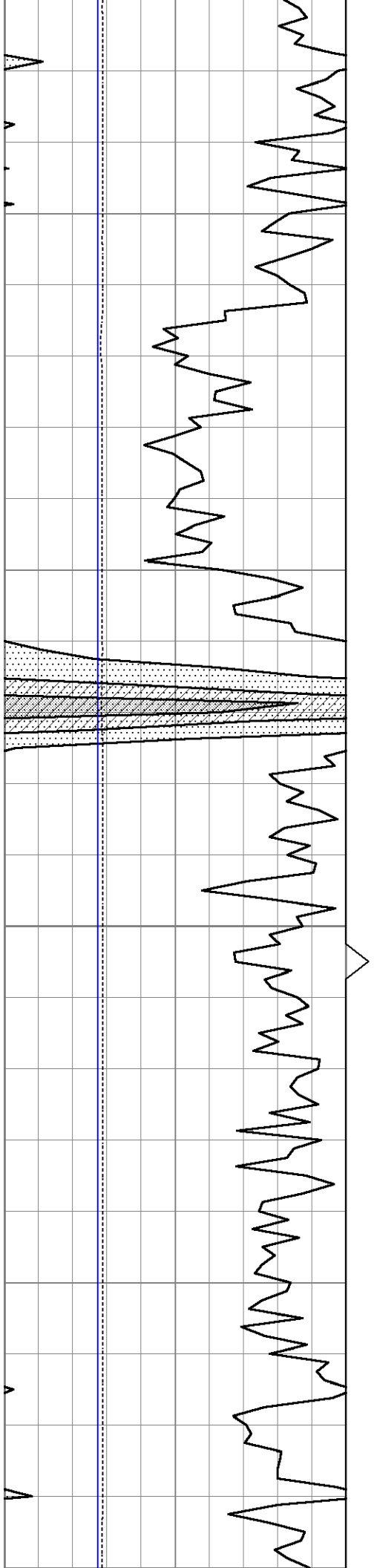
610

620

630





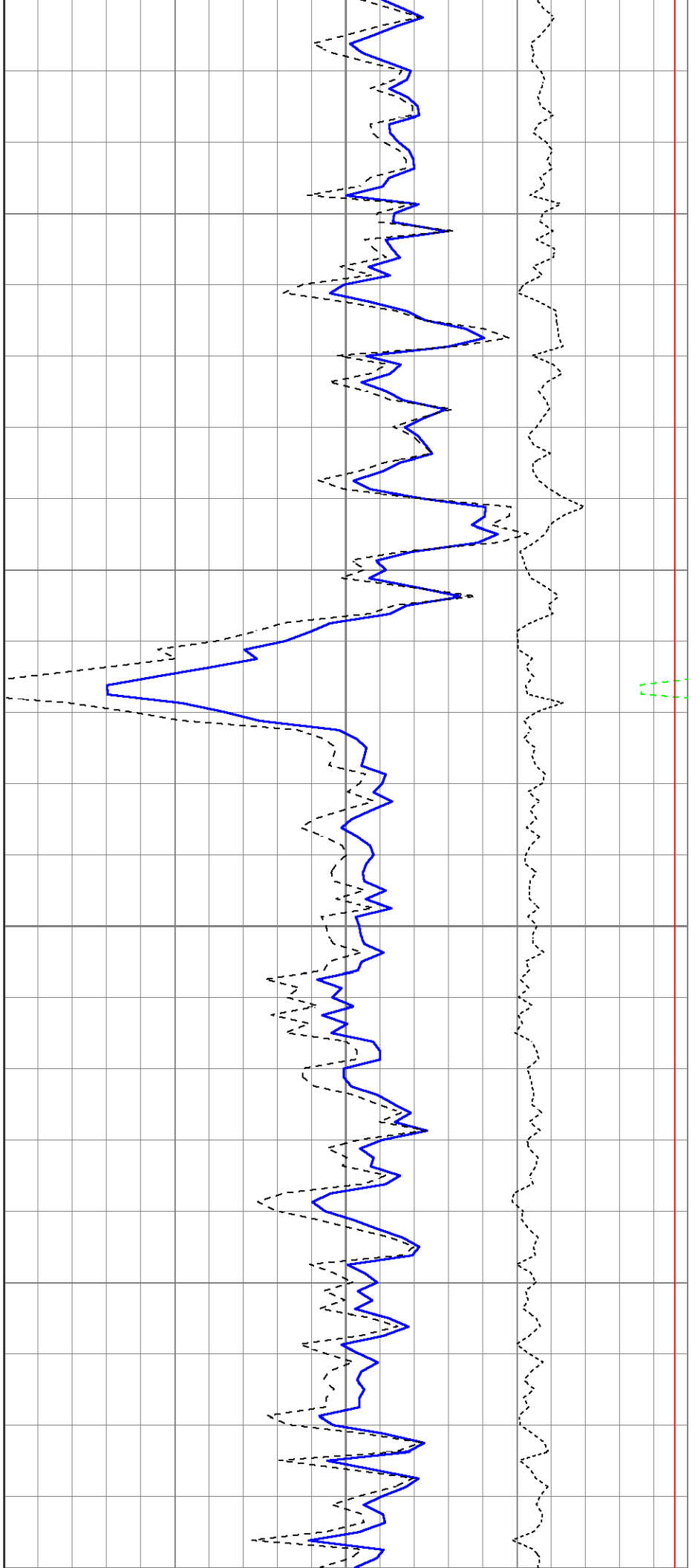


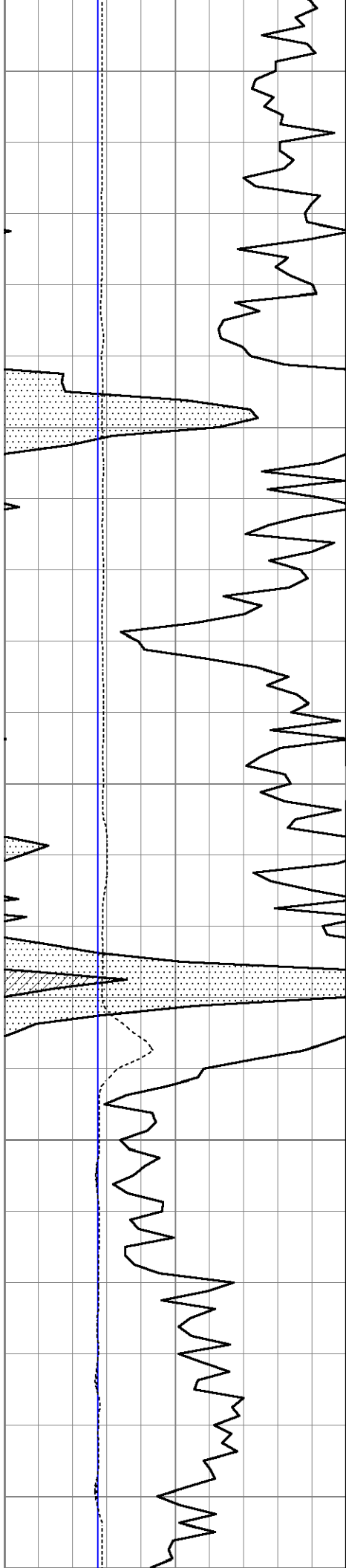
680

690

700

710





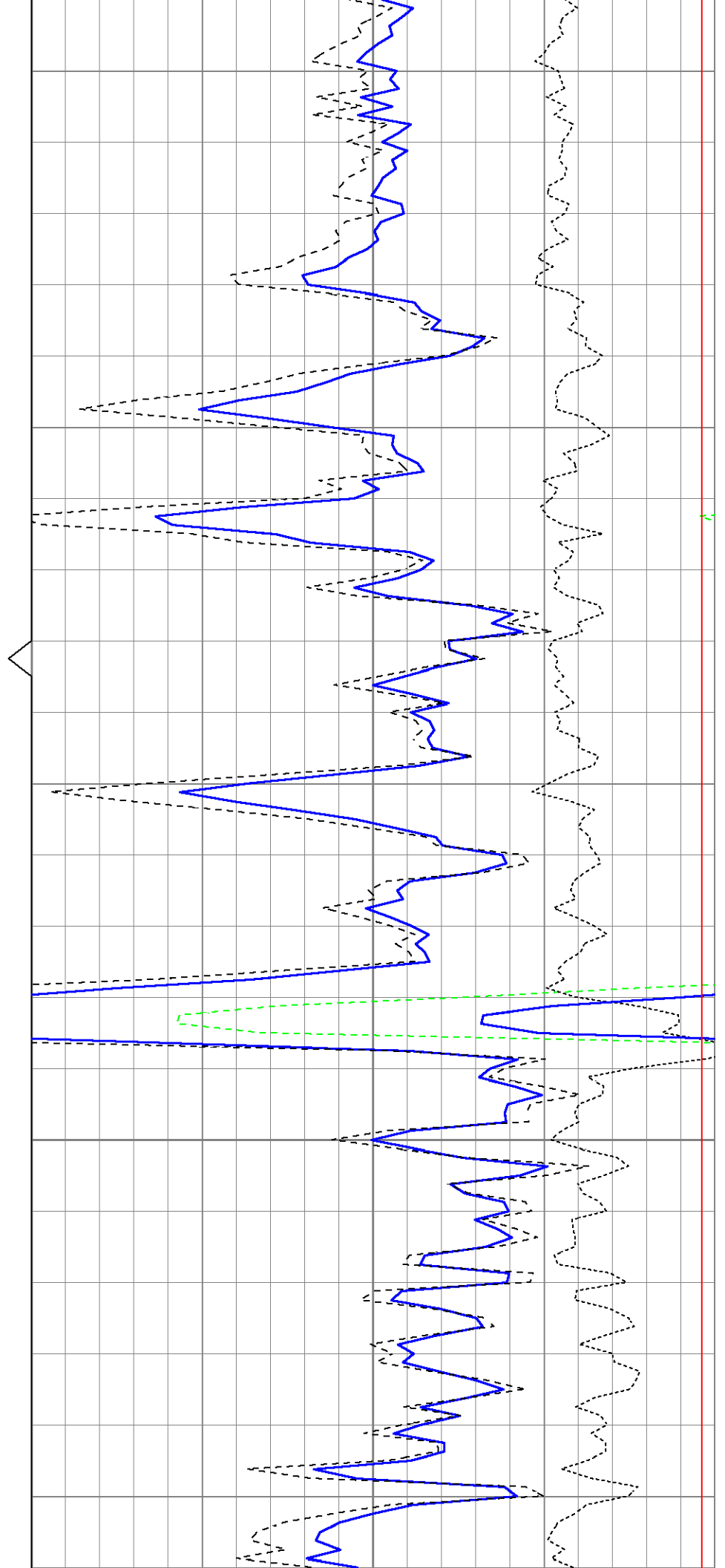
720

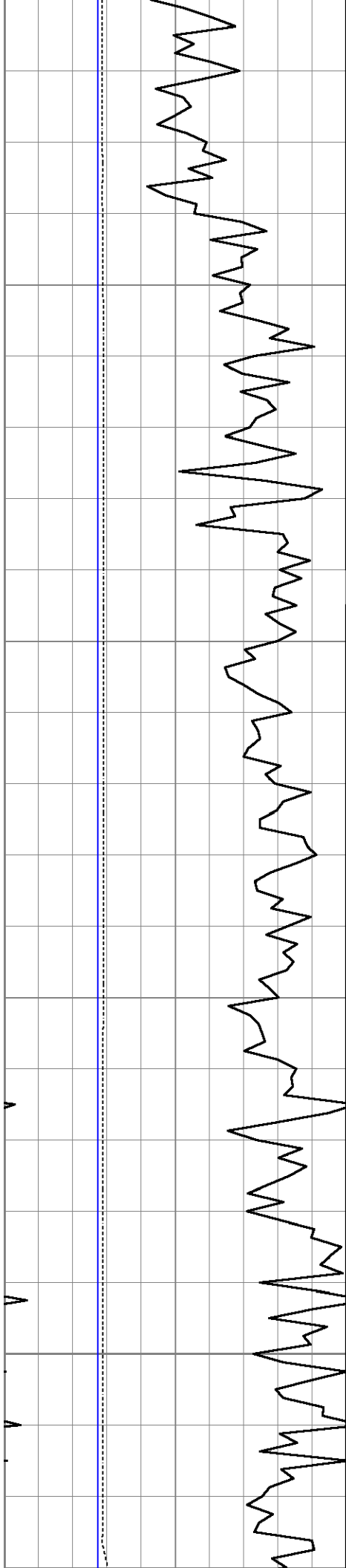
730

740

750

760



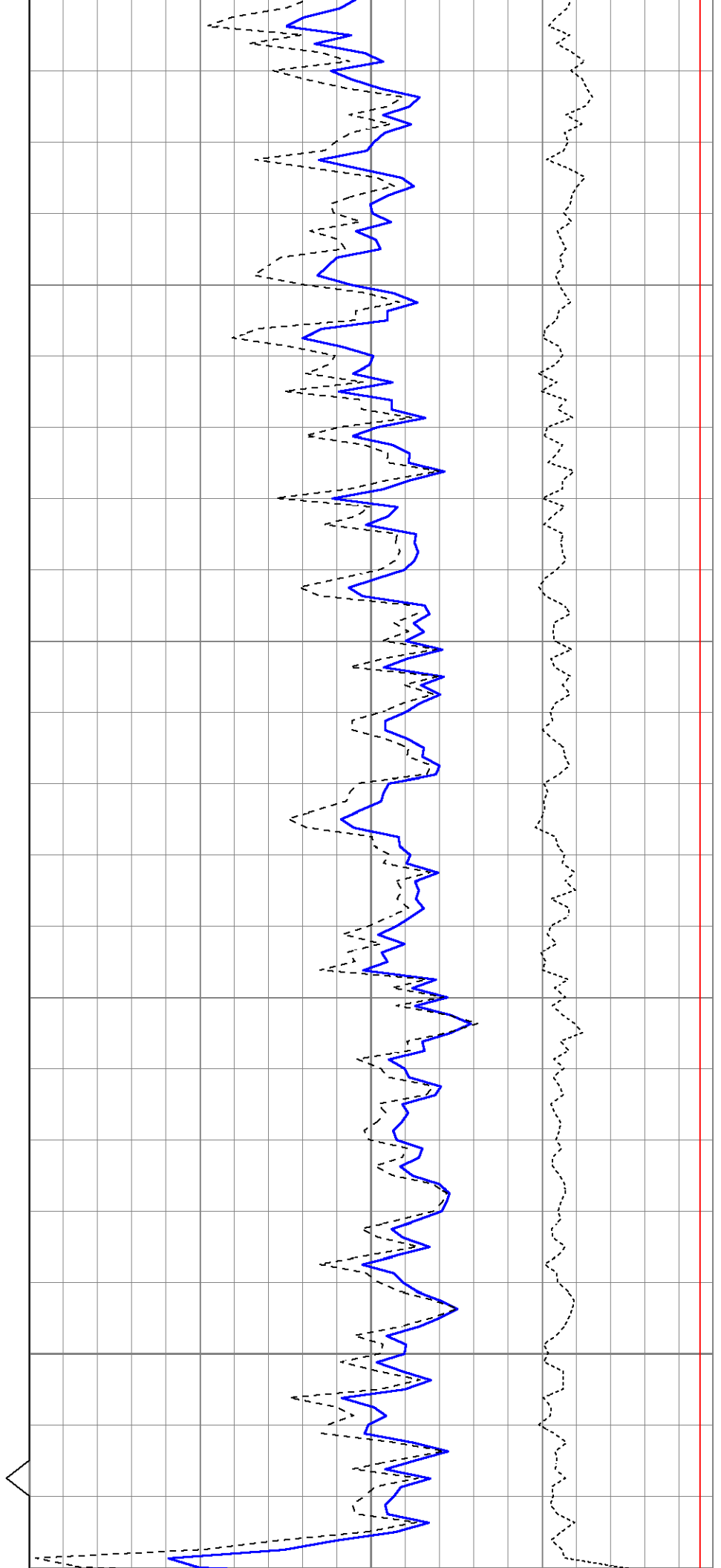


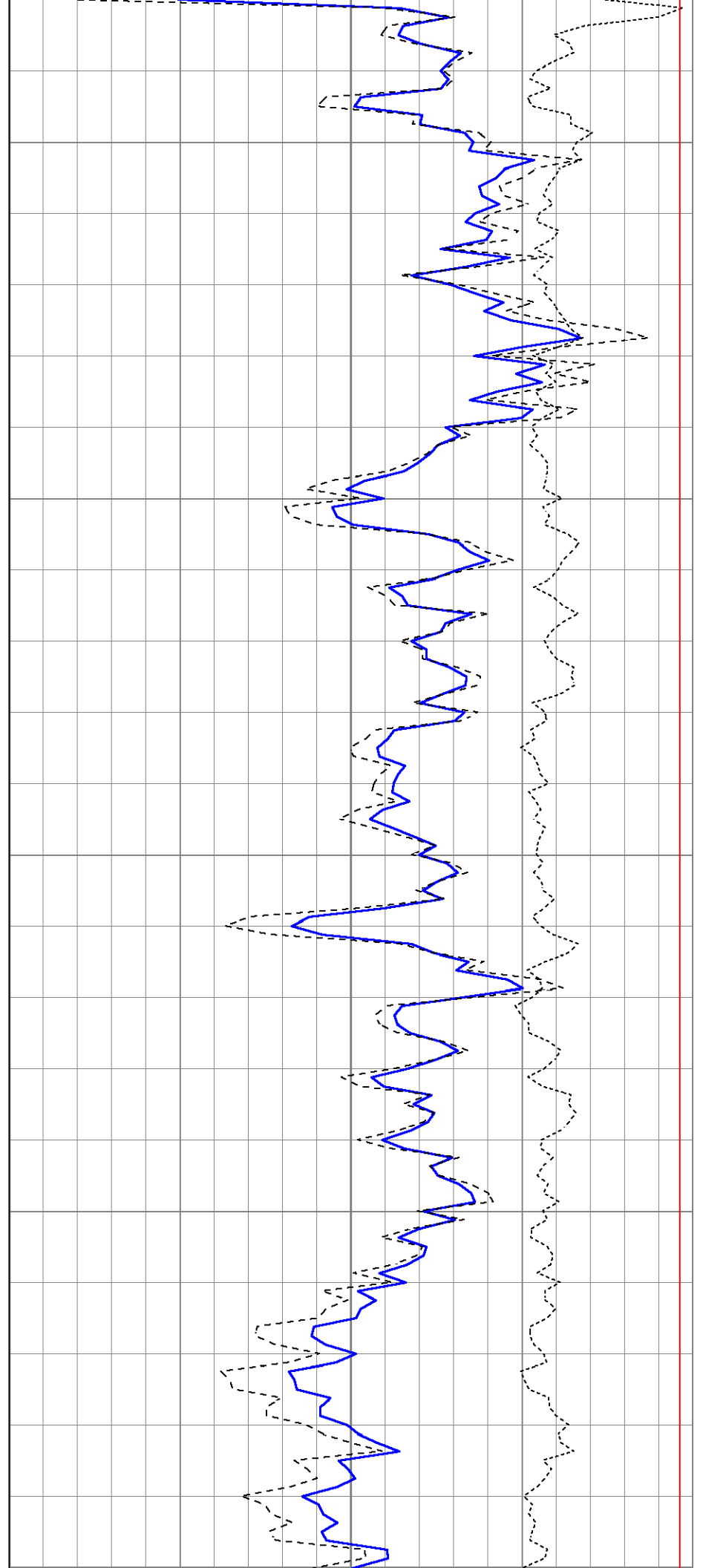
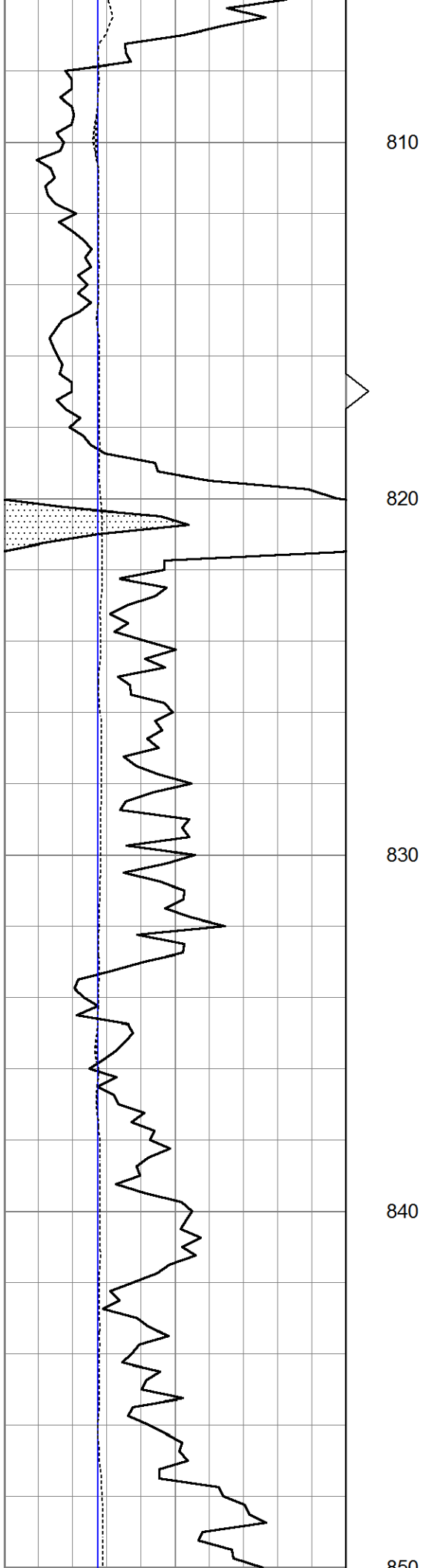
770

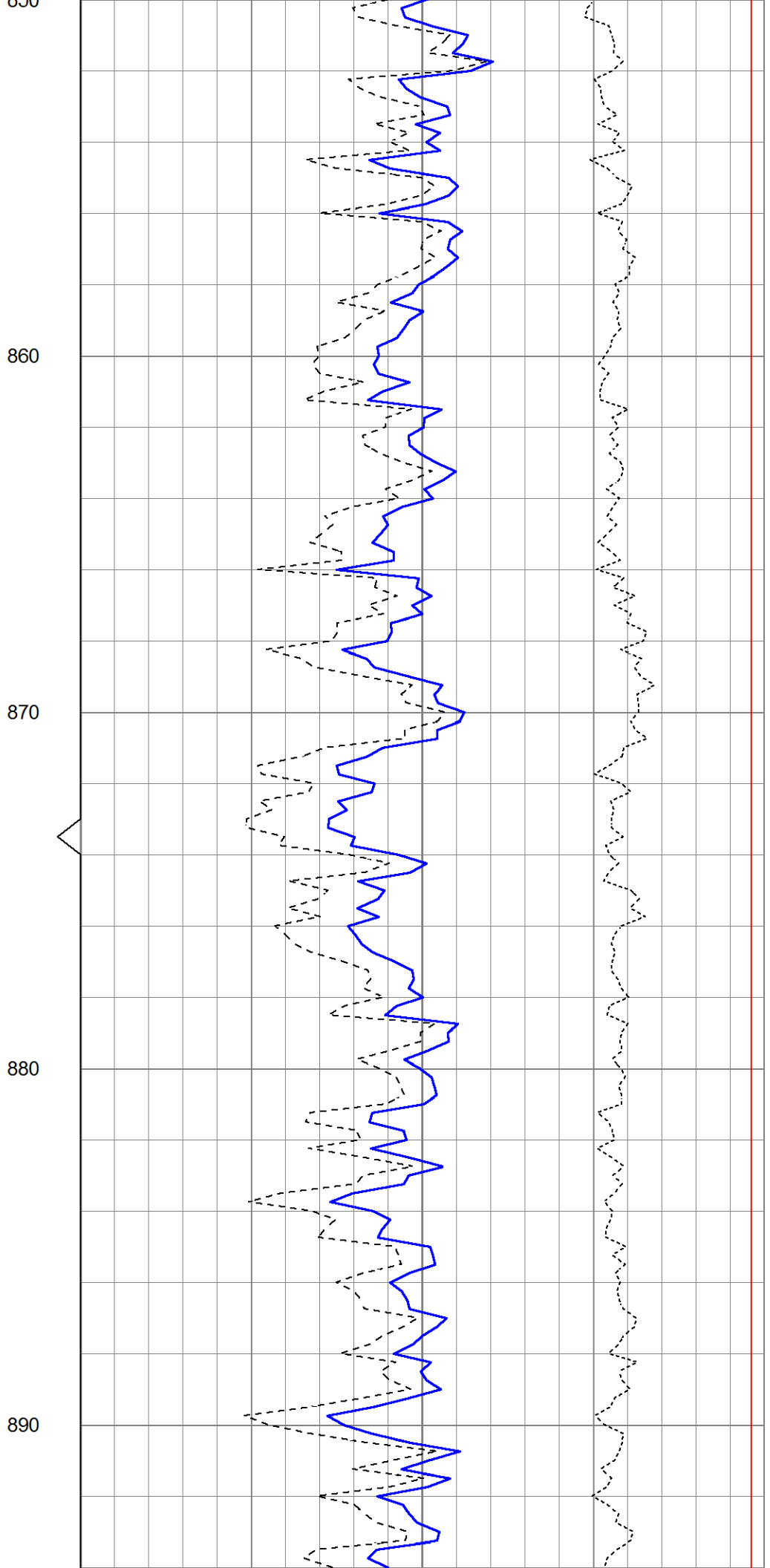
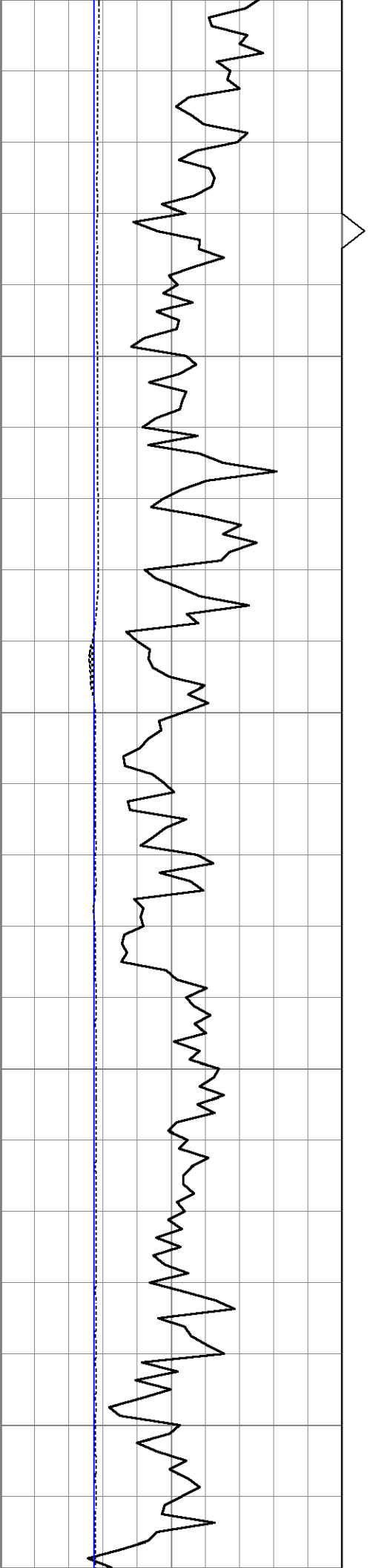
780

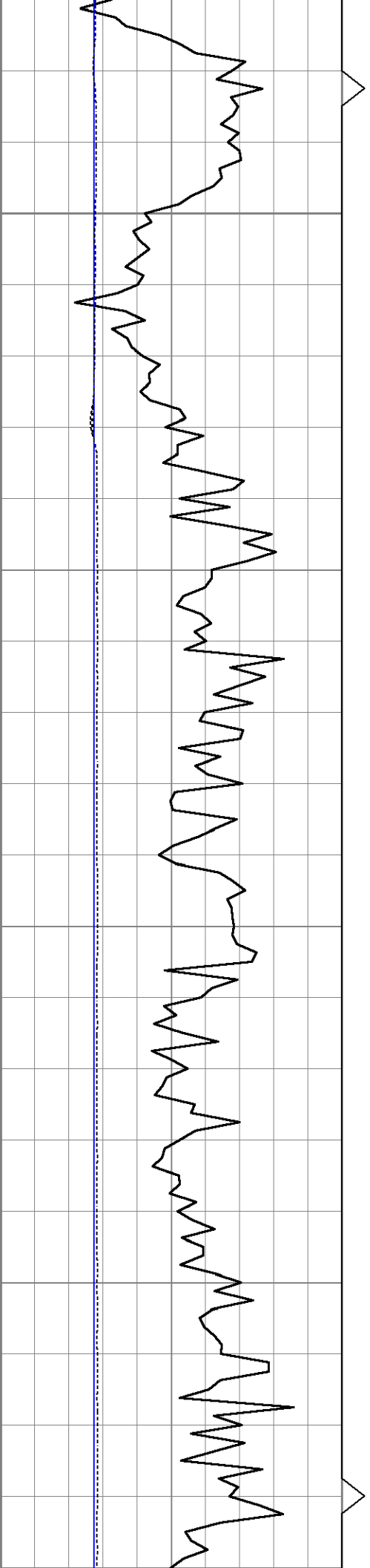
790

800







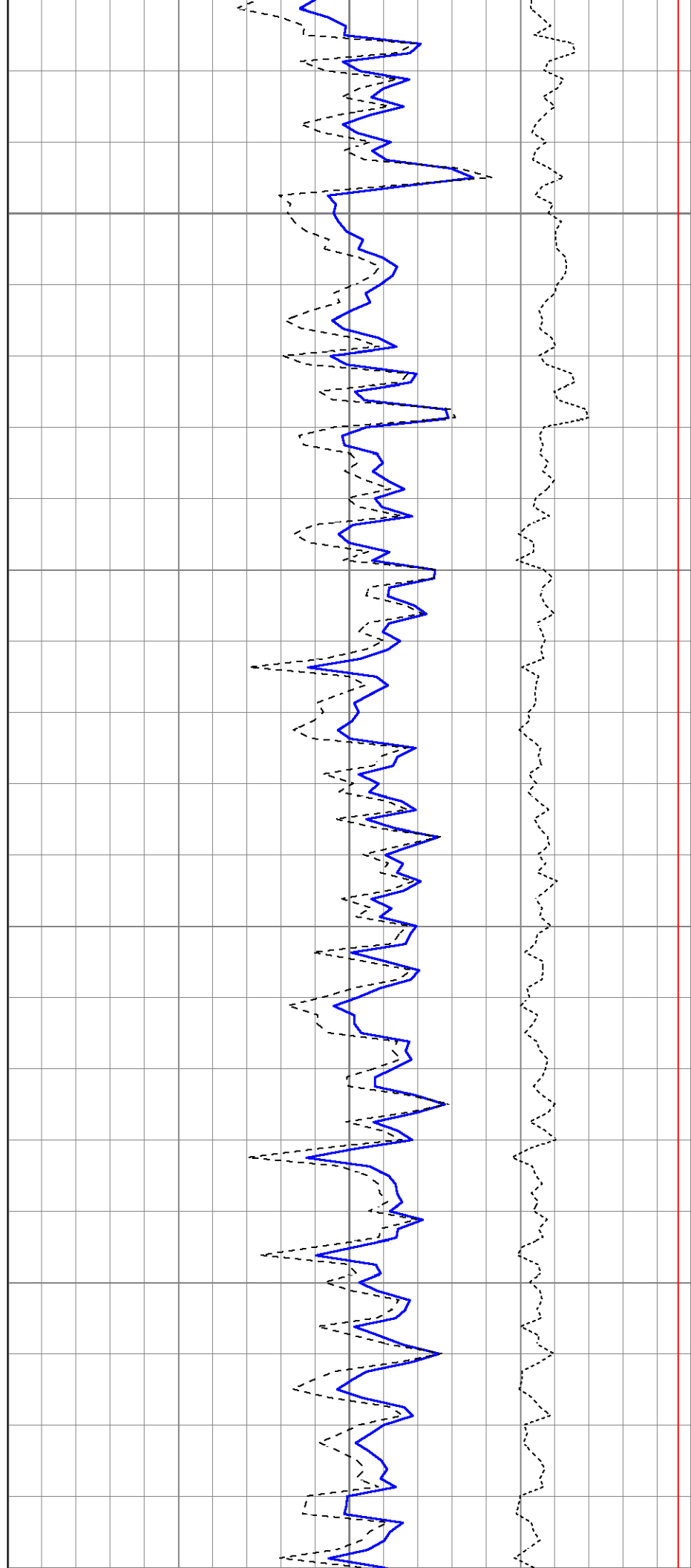


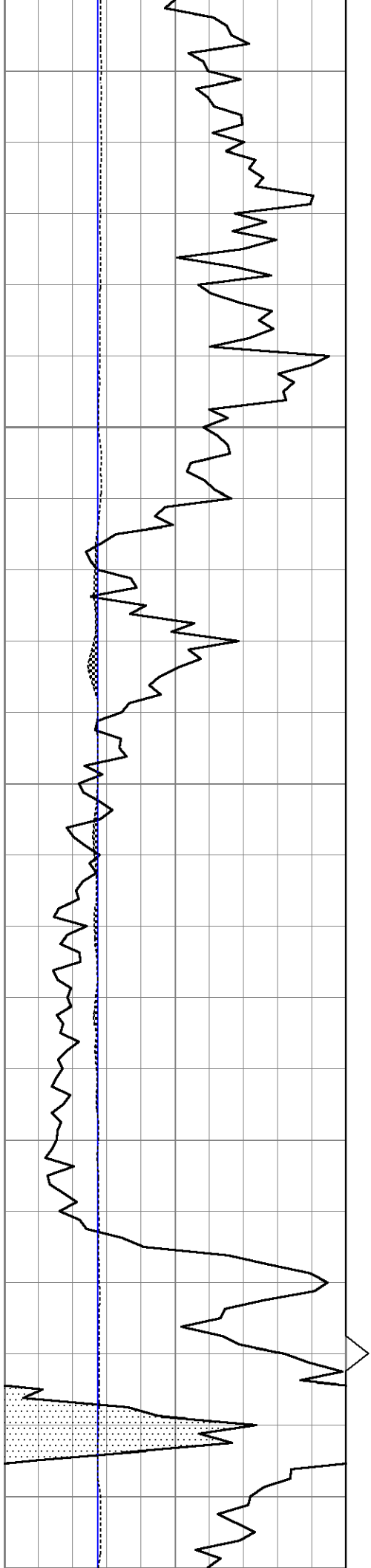
900

910

920

930





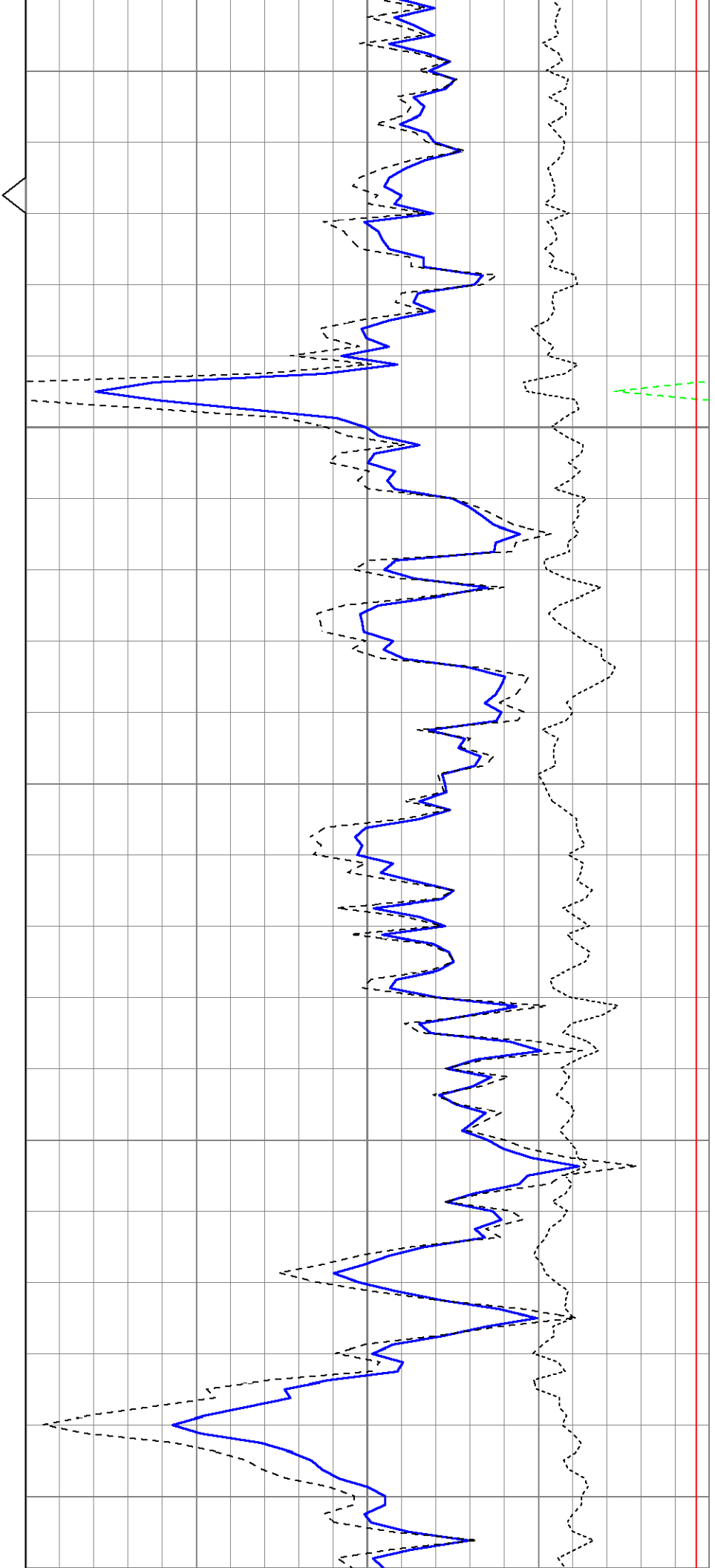
940

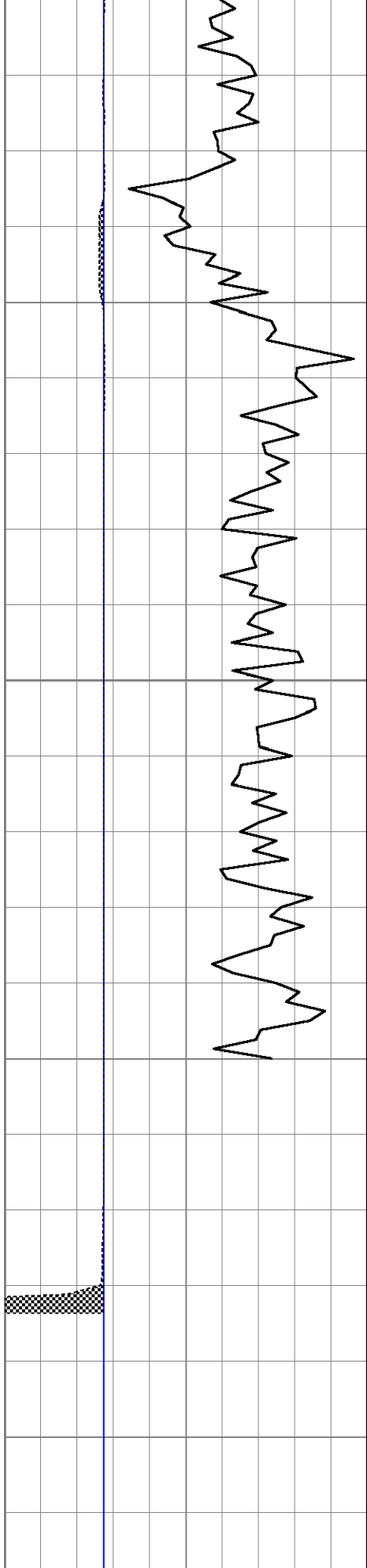
950

960

970

980



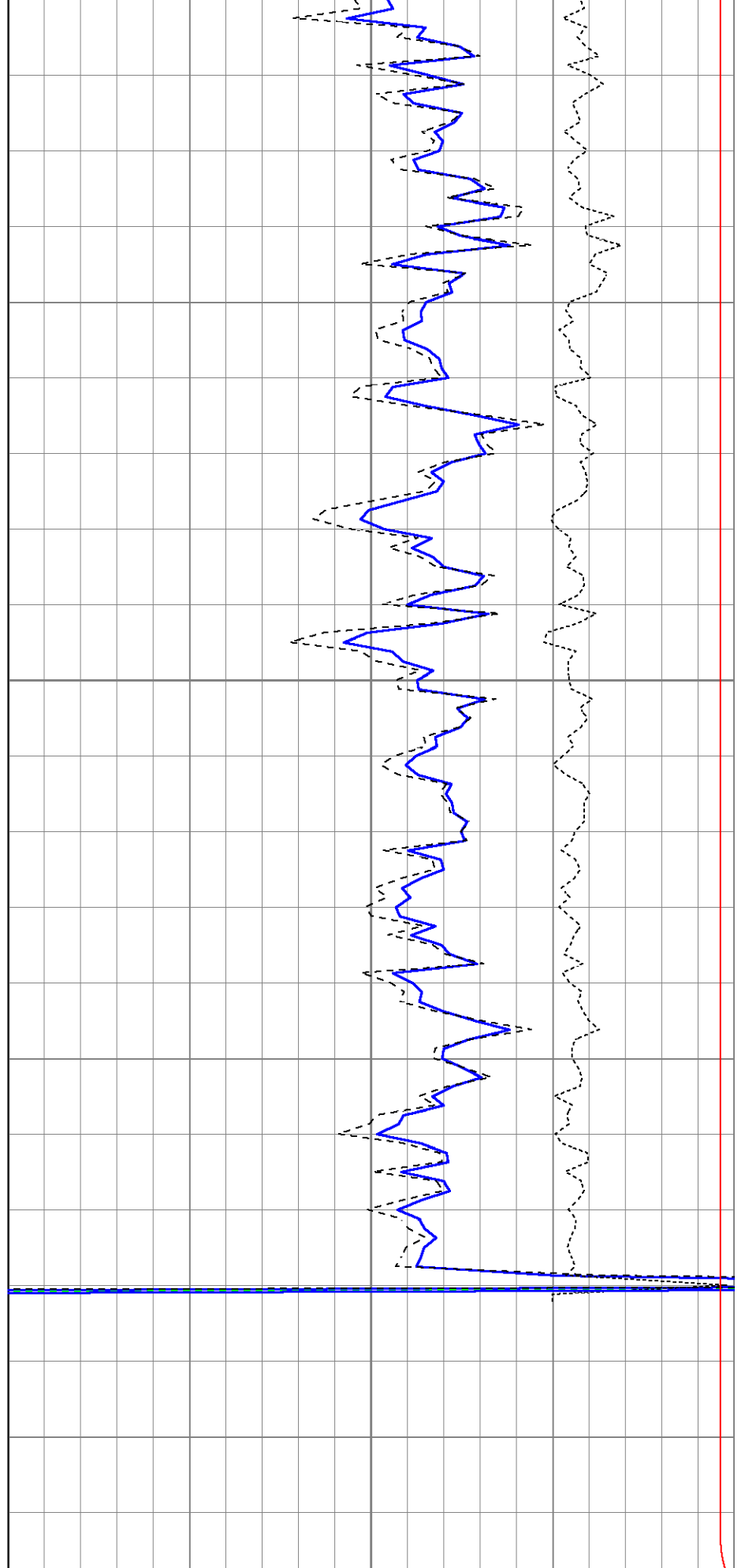


990

1000

1010

1020



0	Gamma Ray (GAPI)	150	TBHV	2	Bulk Density (g/cc)	3	
4	Bit size (in)	14	ABHV	30	Density porosity (pu)	-10	
4	Density Caliner (in)	14			-0.5	Correction (g/cc)	0.5

Sensor	Offset (ft)	Schematic	Description	Length (ft)	O.D. (in)	Weight (lb)
GR	12.82		Cable-CableHead Isulation Sub	1.42	3.00	20.00
			Gamma-Oilex2122 (2122) Gamma Ray Section	2.83	3.50	75.00
LSD	7.44		Density-Oilex2122 (2122) Density Section	6.08	4.00	200.00
DCAL	7.16					
SSD	6.98					
			SUB-10-1 Sub for 10 to 1 connection	0.69	3.75	15.00
			Neutron-SlimLine (CDL) Slim Neutron	4.34	1.75	35.00
NEU	0.51					

Dataset: ow2-8690 lr energy.db: field/well/CDL/pass1
 Total length: 15.36 ft
 Total weight: 345.00 lb
 O.D.: 4.00 in