



**COMPLETION  
& PRODUCTION  
SERVICES CO.**

**SONIC  
LOG**

Company: TRANS-PACIFIC OIL CORP.  
Well: FLEMING "A" #1-14  
Field: WILDCAT  
County: ROOKS  
State: KANSAS

Company: TRANS-PACIFIC OIL CORPORATION  
Well: FLEMING "A" #1-14  
Field: WILDCAT  
County: ROOKS  
State: KANSAS

Location: API #: 15-163-24239-0000  
SEC 14 TWP 6S RGE 19W  
Permanent Datum: GROUND LEVEL Elevation: 2110  
Log Measured From: KELLY BUSHING 5' A.G.L.  
Drilling Measured From: KELLY BUSHING  
Other Services: CDL/CNL/PE DIL/MEL  
Elevation: K.B. 2115 D.F. 2113 G.L. 2110

Date	9/5/14
Run Number	TWO
Depth Driller	3775
Depth Logger	3774
Bottom Logged Interval	3764
Top Log Interval	00
Casing Driller	8 5/8"@217'
Casing Logger	217'
Bit Size	7 7/8"
Type Fluid in Hole	CHEMICAL MUD
Density / Viscosity	9.4/56
pH / Fluid Loss	10.5/8.0
Source of Sample	FLOWLINE
Rim @ Meas. Temp	0.95@80F
Rmf @ Meas. Temp	0.71@80F
Rmc @ Meas. Temp	1.14@80F
Source of Rmf / Rmc	MEASUREMENT
Rim @ BHT	0.67@114F
Time Circulation Stopped	2 HOURS
Time Logger on Bottom	
Maximum Recorded Temperature	114F
Equipment Number	4854
Location	HAYS, KANSAS
Recorded By	JEFF GRONEMEG
Witnessed By	ALEX CHAPIN

<<< Fold Here >>>

All interpretations are opinions based on inferences from electrical or other measurements and we cannot and do not guarantee the accuracy or correctness of any interpretation, and we shall not, except in the case of gross or willful negligence on our part, be liable or responsible for any loss, costs, damages, or expenses incurred or sustained by anyone resulting from any interpretation made by any of our officers, agents or employees. These interpretations are also subject to our general terms and conditions set out in our current Price Schedule.

**Comments**

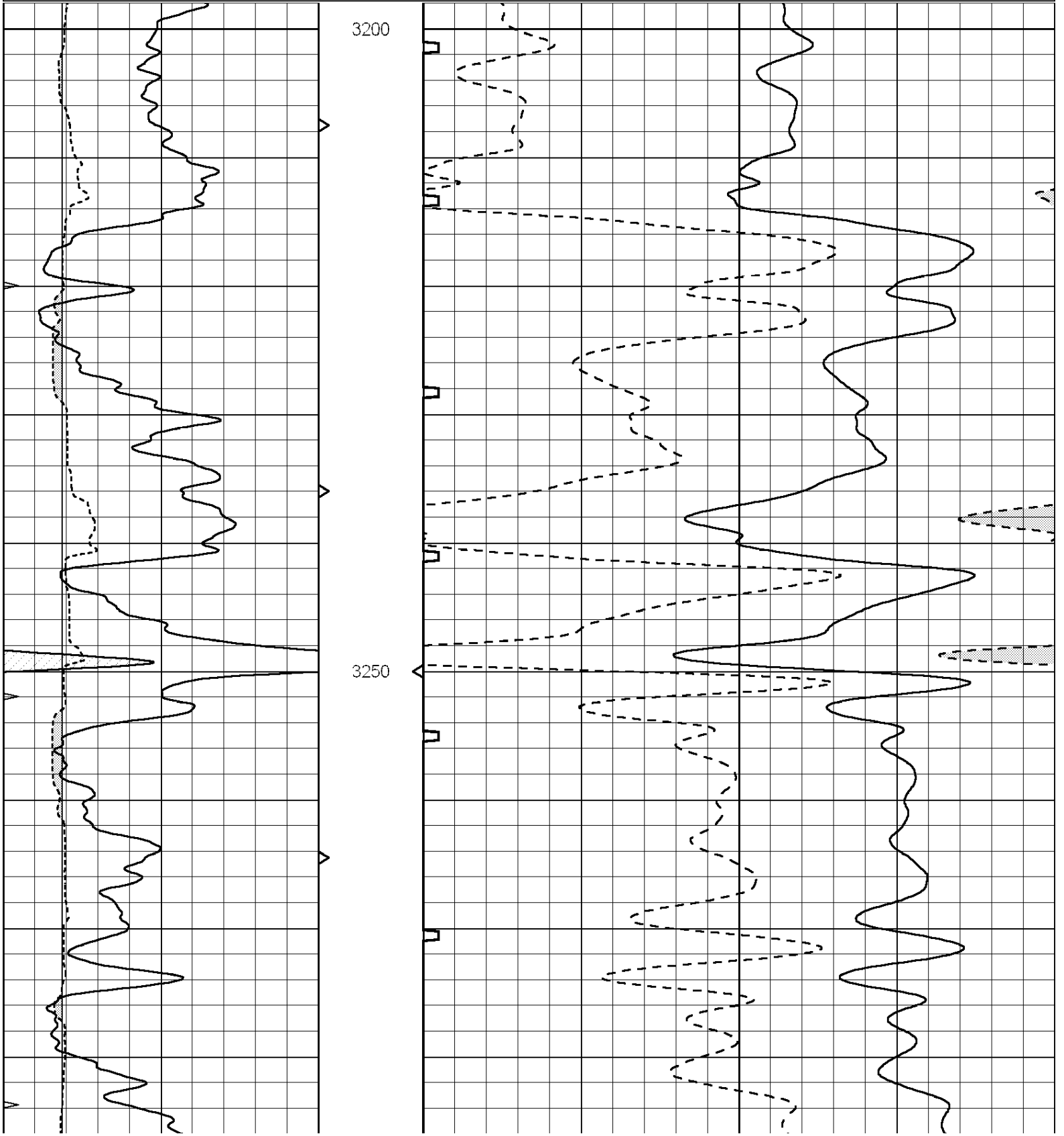
THANK YOU FOR USING "NABORS" HAYS, KANSAS (785) 628-6395  
DIRECTIONS  
STOCKTON, KS - 6 MILES WEST TO RD 12 - 6 MILES NORTH TO RD D  
1/2 MILE WEST - NORTH INTO

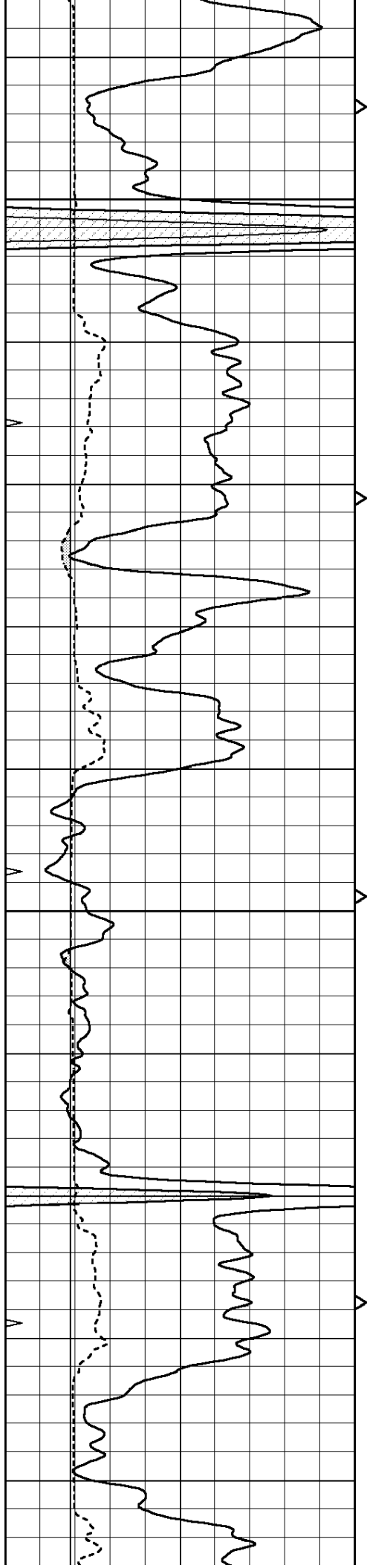


**HIGH RESOLUTION**

Database File: 25876pe.db  
 Dataset Pathname: pass6.2.H  
 Presentation Format: \_slt  
 Dataset Creation: Fri Sep 05 13:57:51 2014 by Calc SOC 120430  
 Charted by: Depth in Feet scaled 1:120

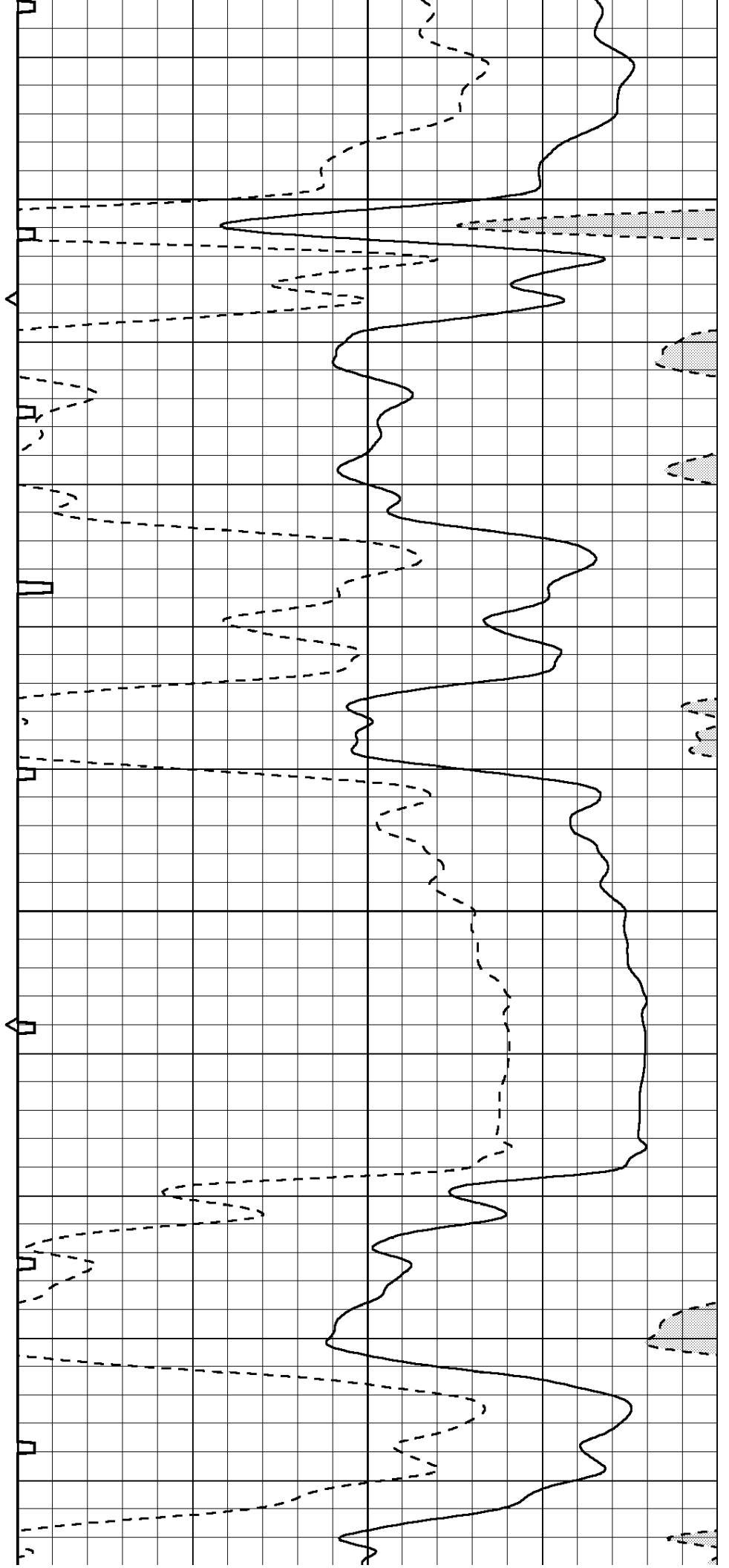
0	GAMMA RAY (GAPI)	150	ABHV	140	DELTA TIME (usec/ft)	40	
6	CALIPER (in)	16	10 (ft3)	0	30	SONIC POROSITY (pu)	-10
0	MINMK	20	TBHV	0	ITT (msec)	20	
			0 (ft3)	10			

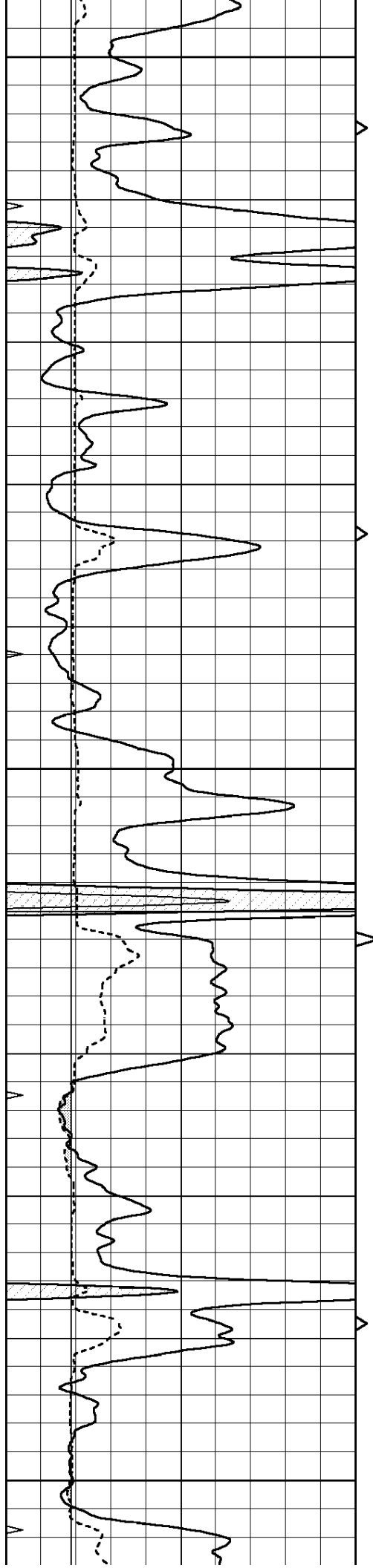




3300

3350

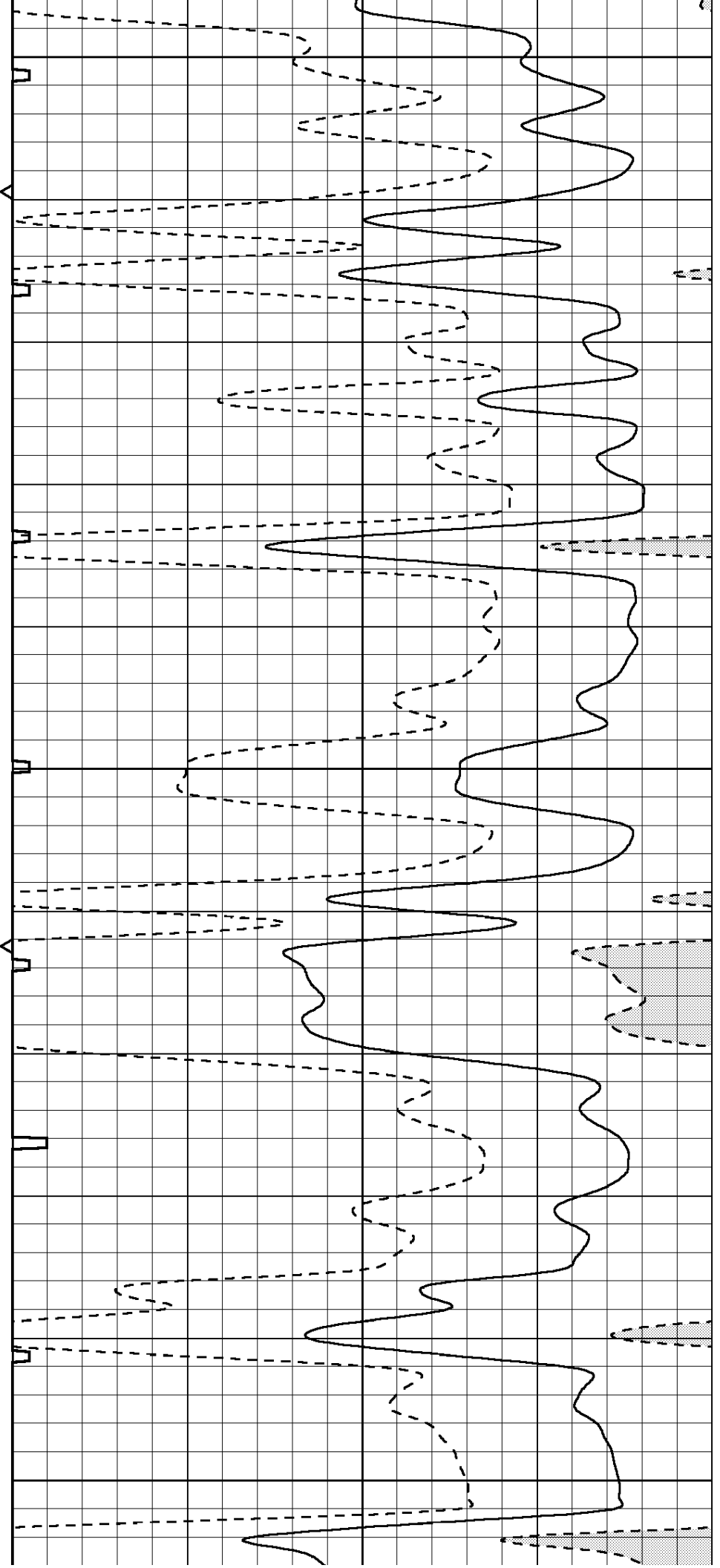


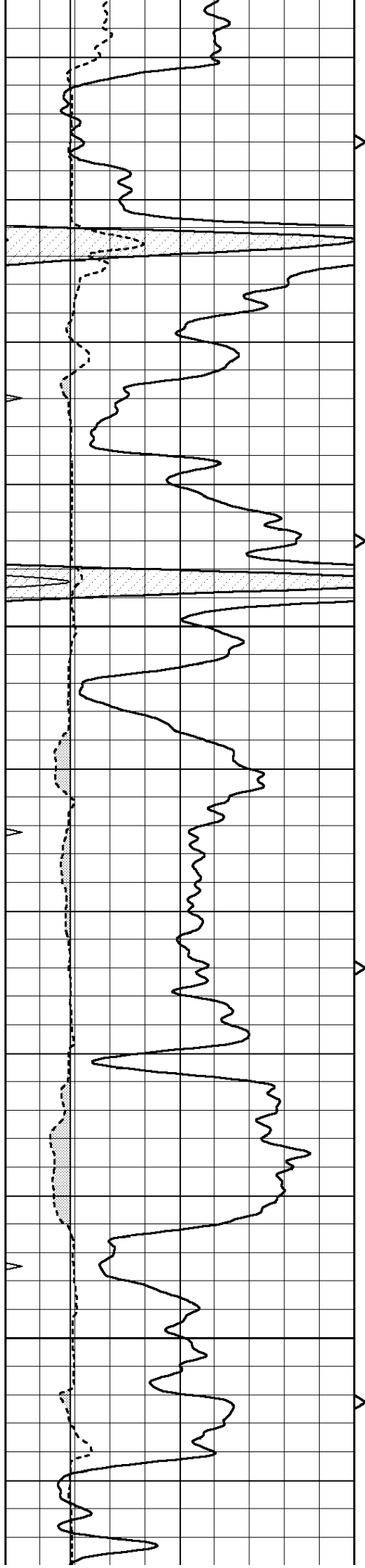


3400

3450

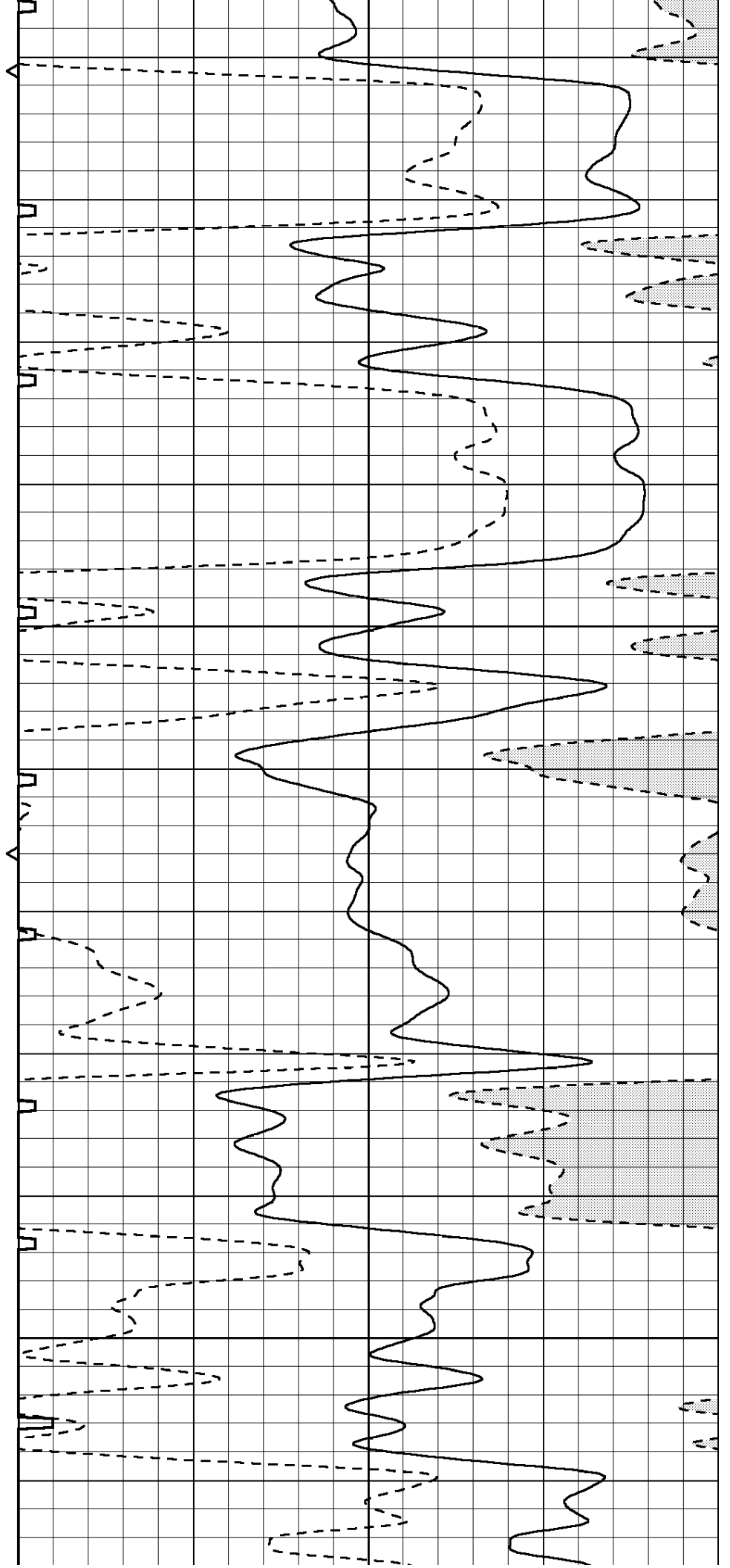
3500

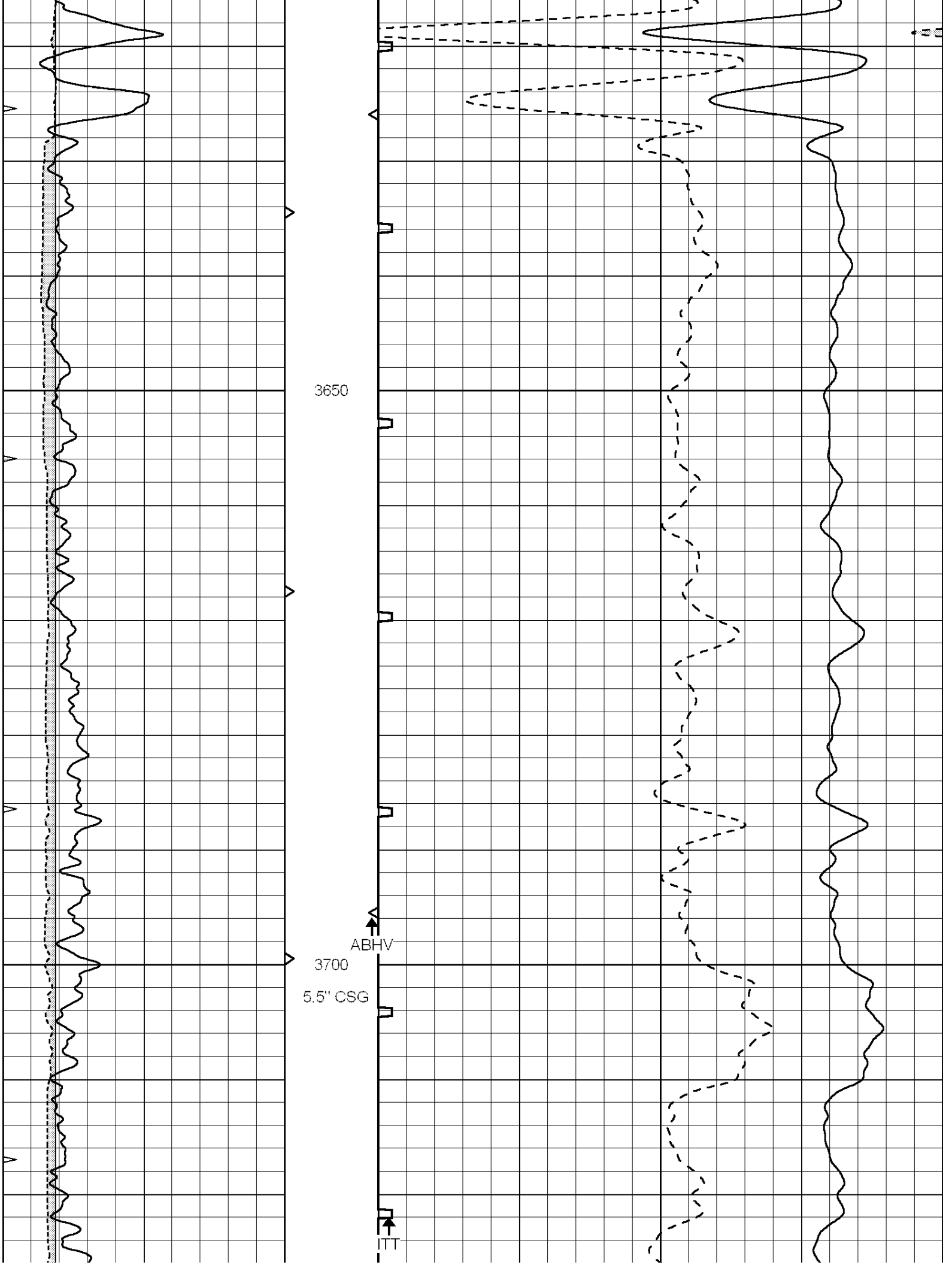


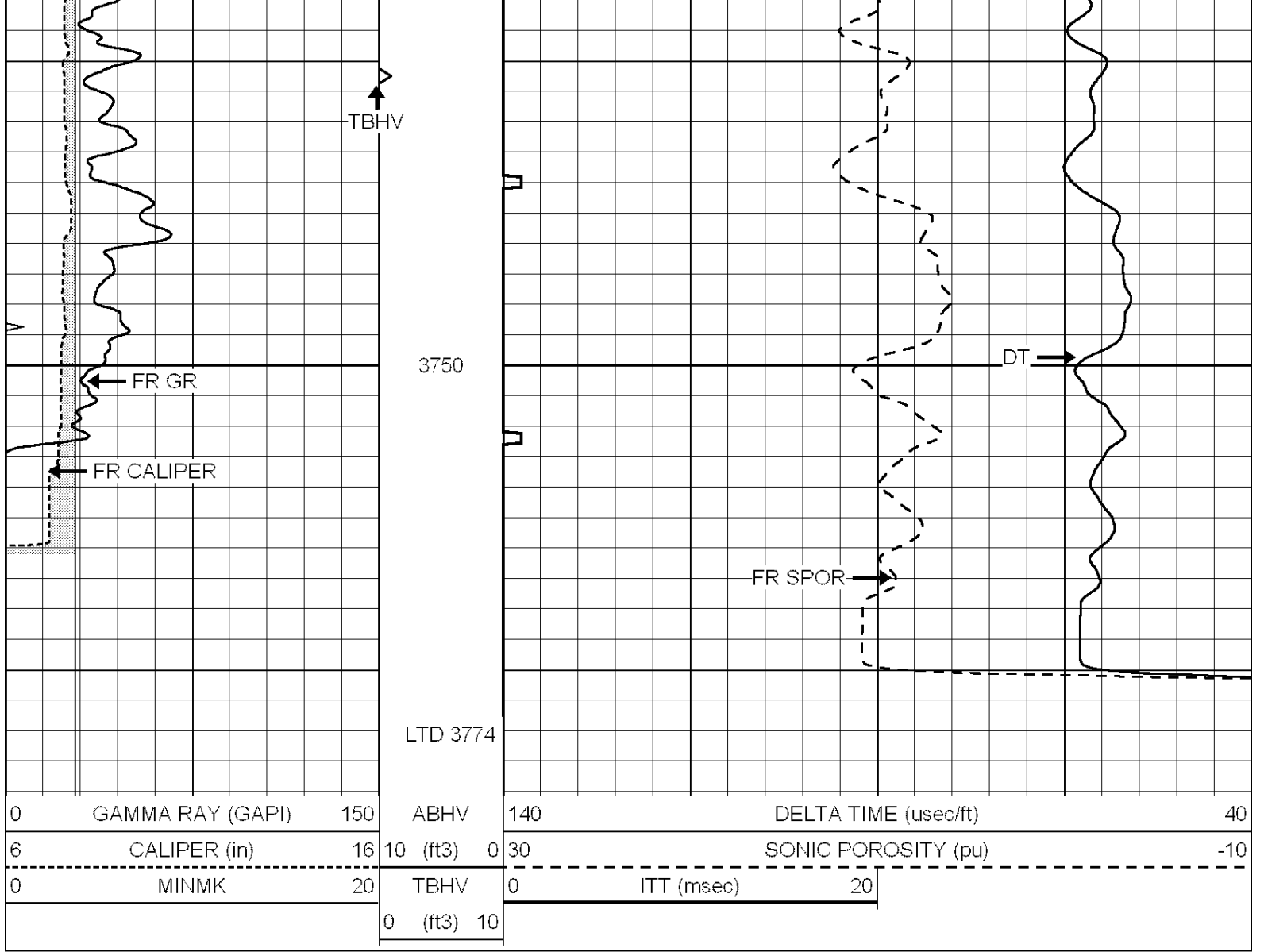


3550

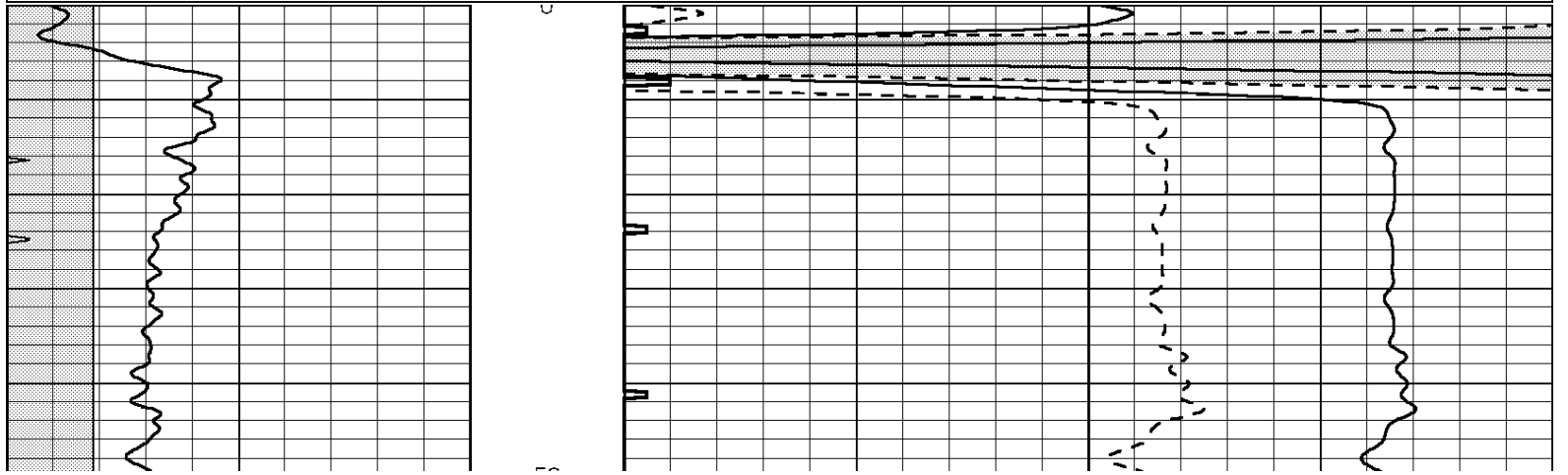
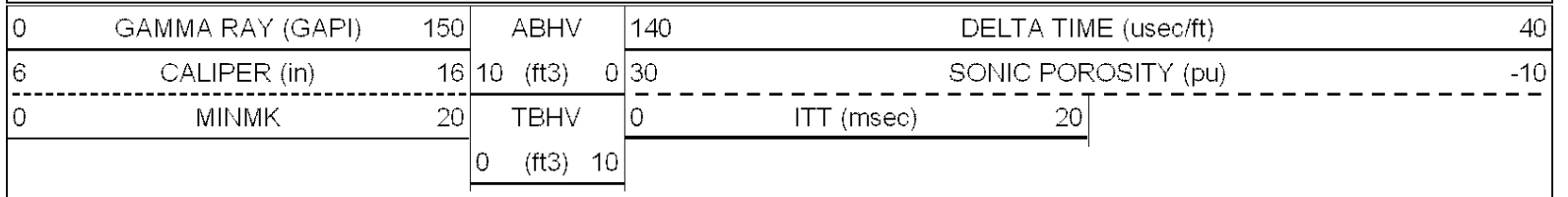
3600

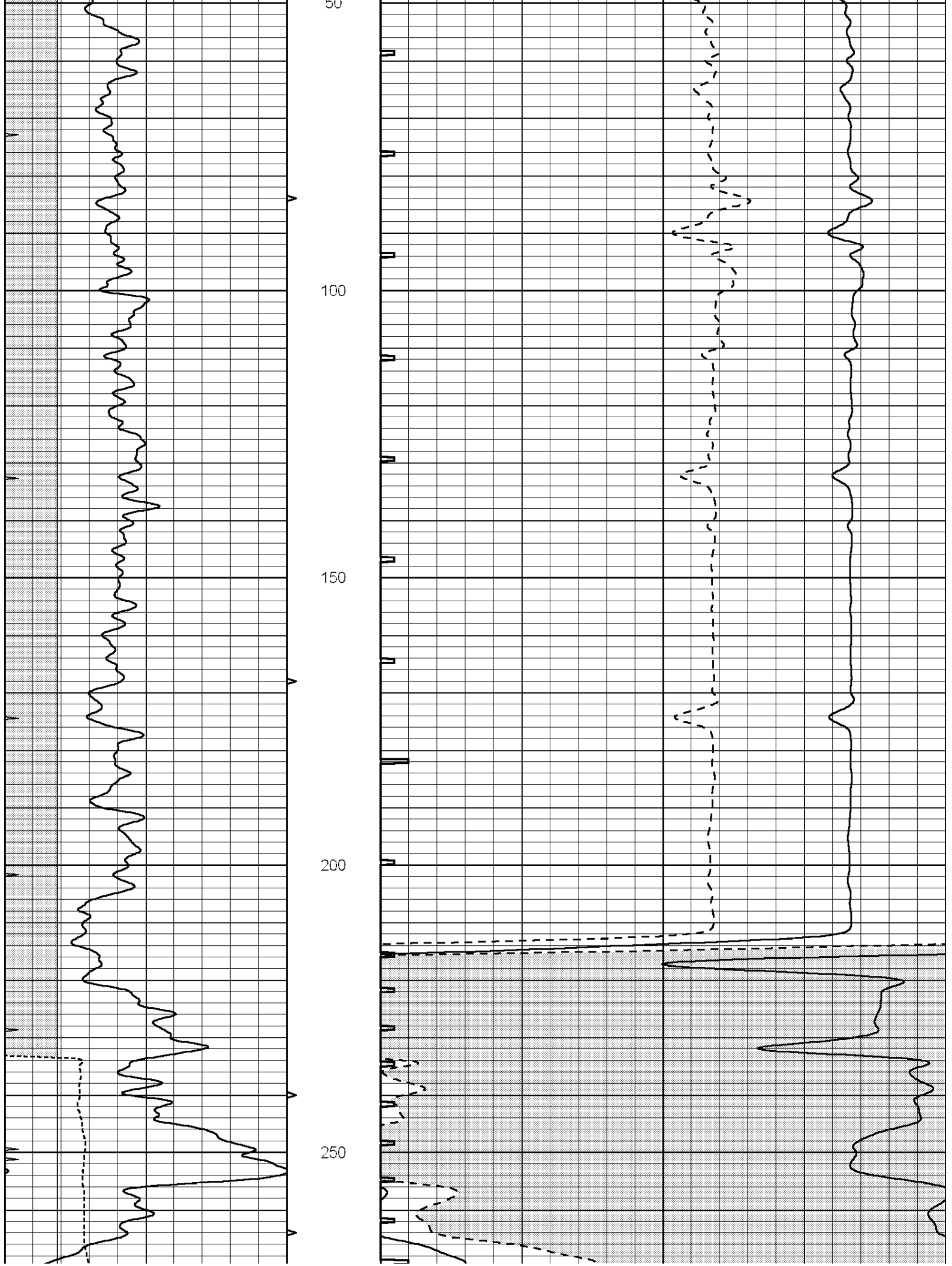


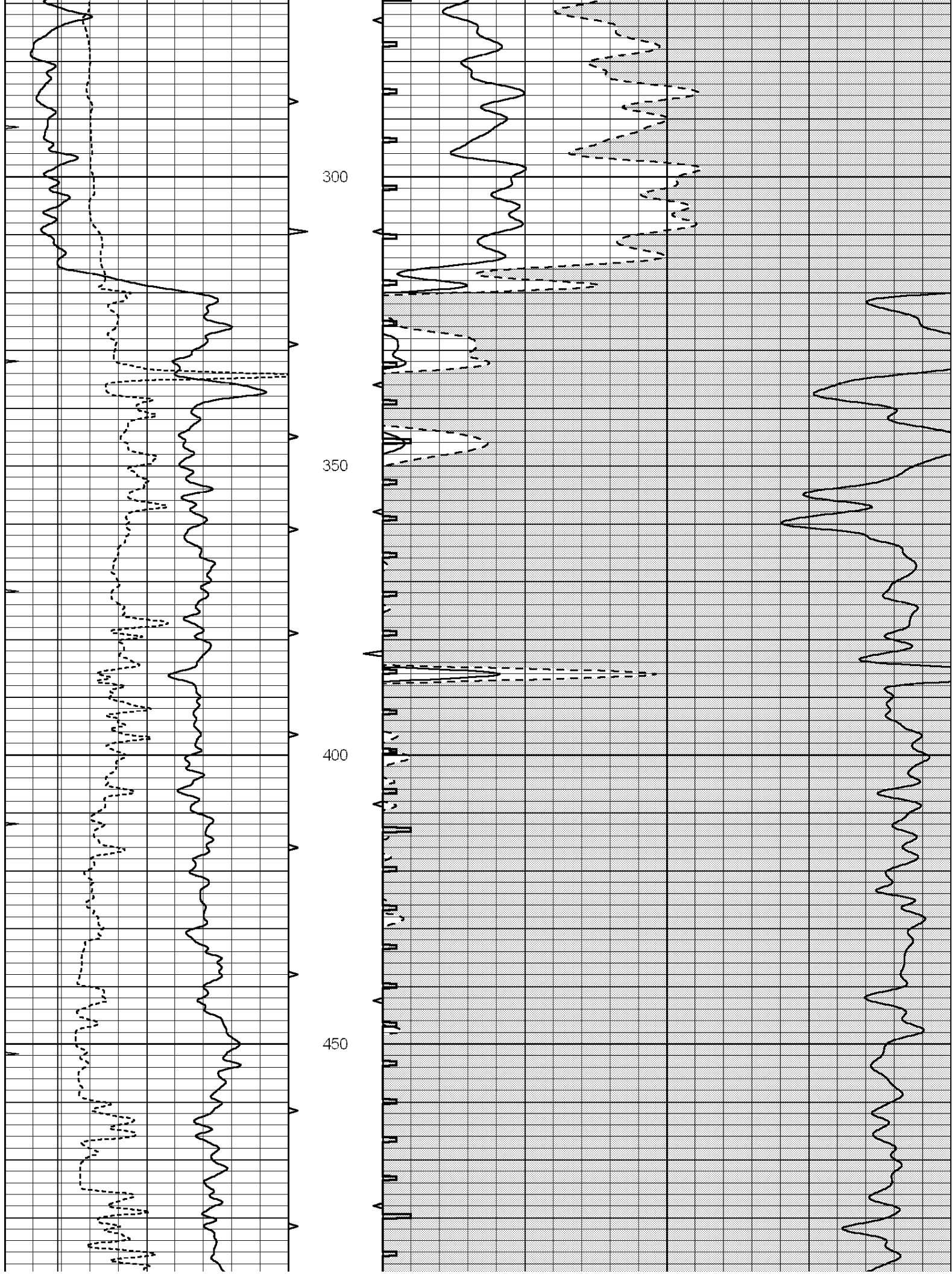


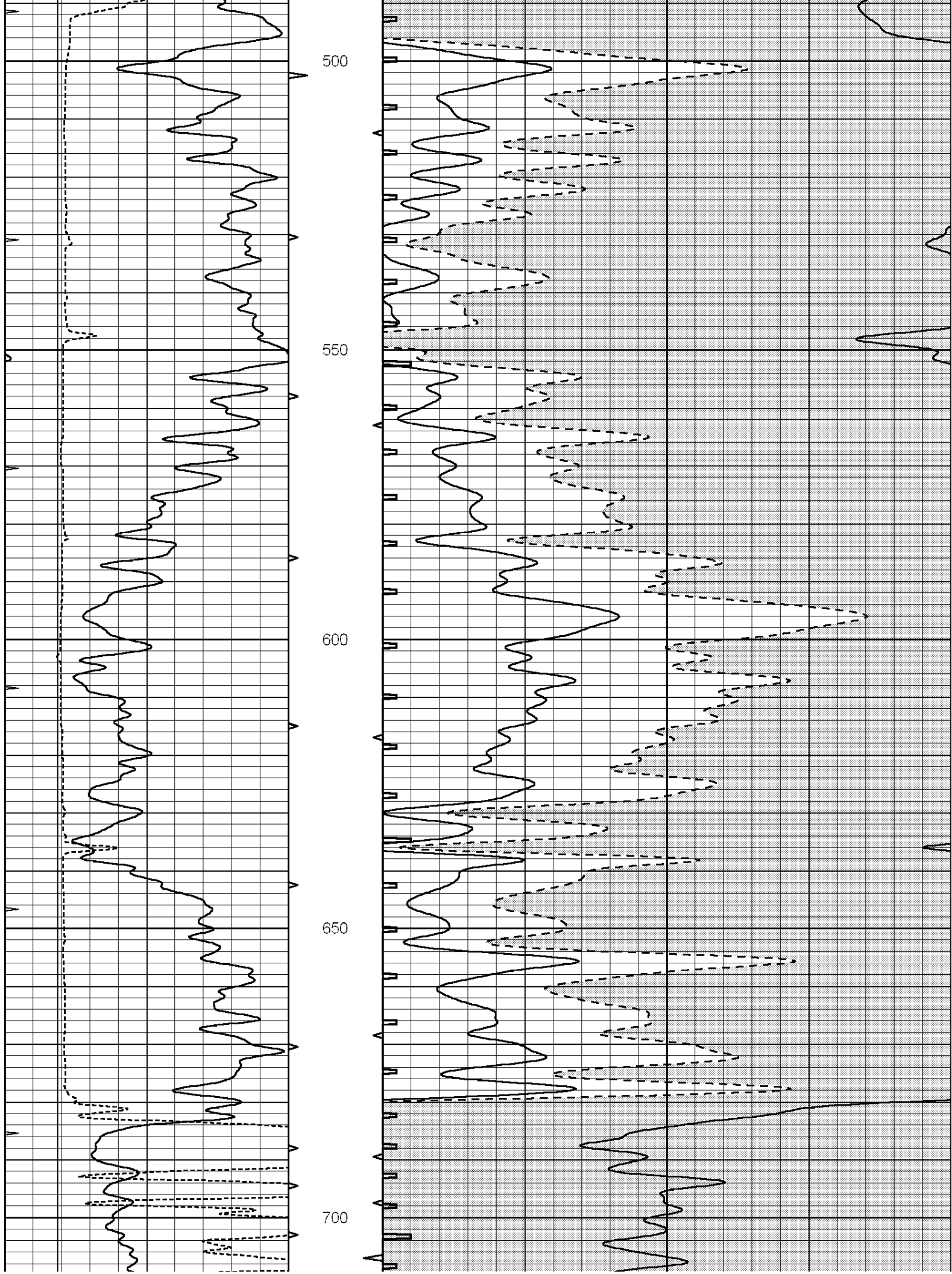


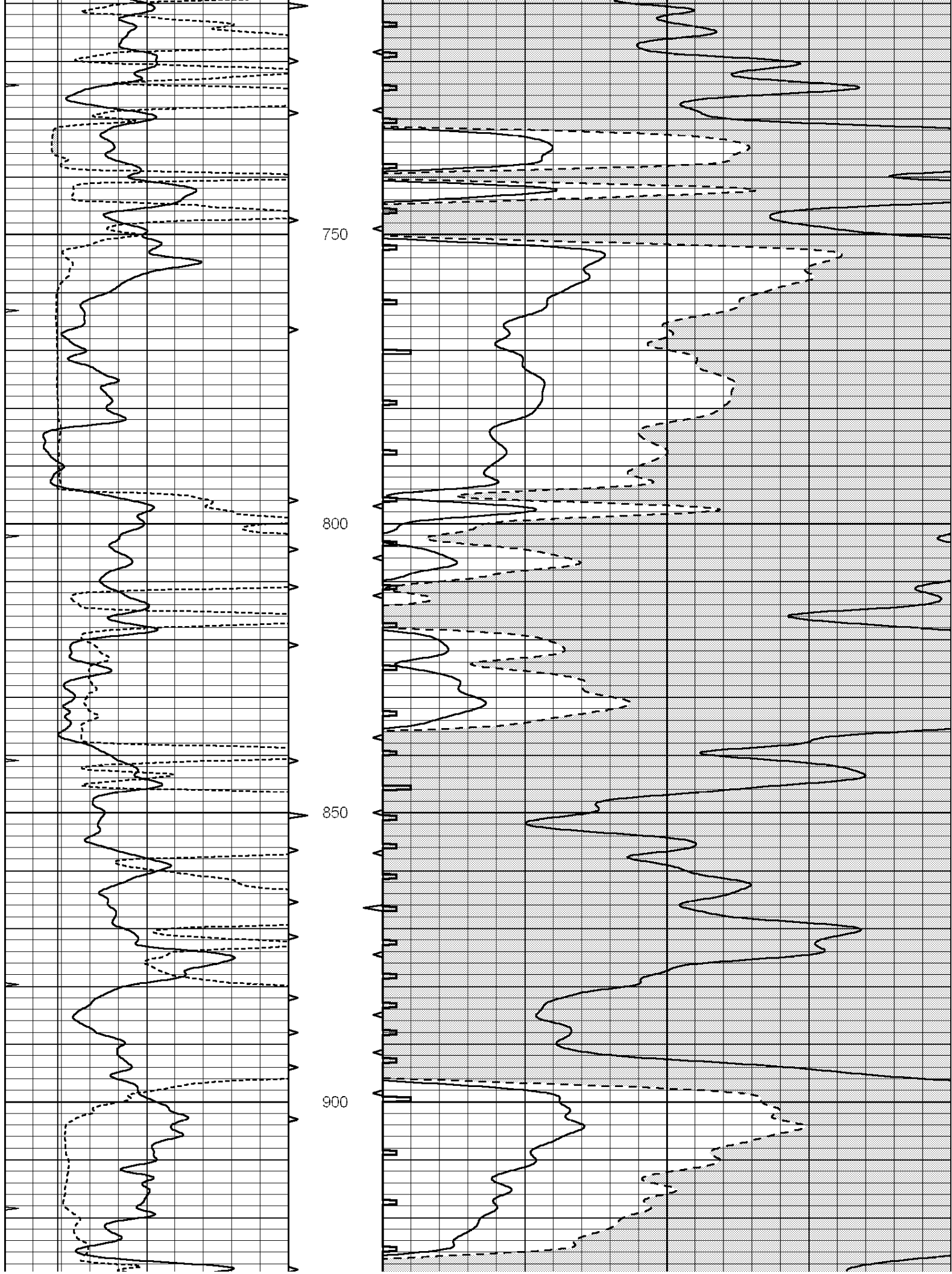
Database File: 25876pe.db  
 Dataset Pathname: pass6.3  
 Presentation Format: \_slt  
 Dataset Creation: Fri Sep 05 15:38:27 2014 by Calc SOC 120430  
 Charted by: Depth in Feet scaled 1:240

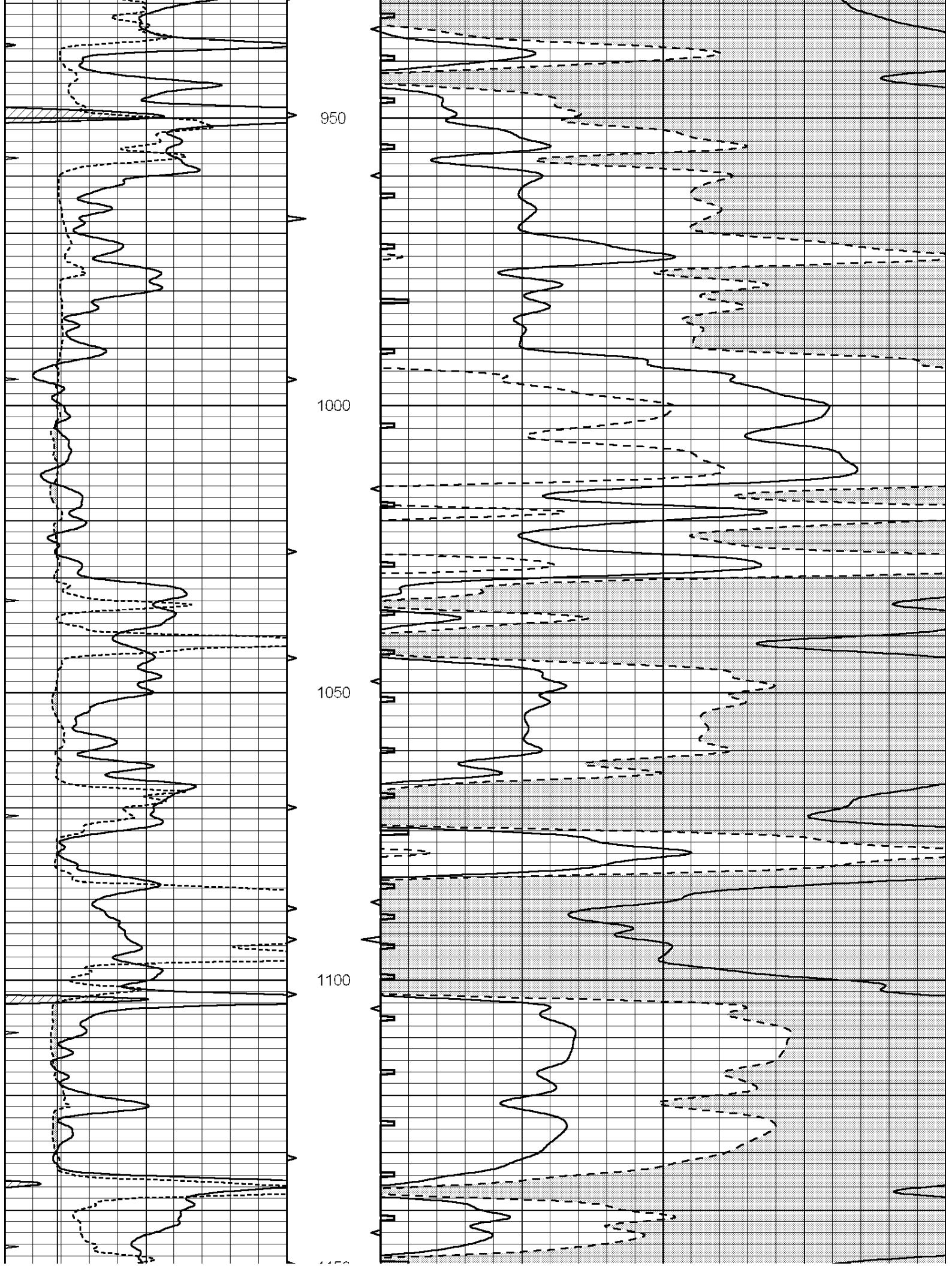


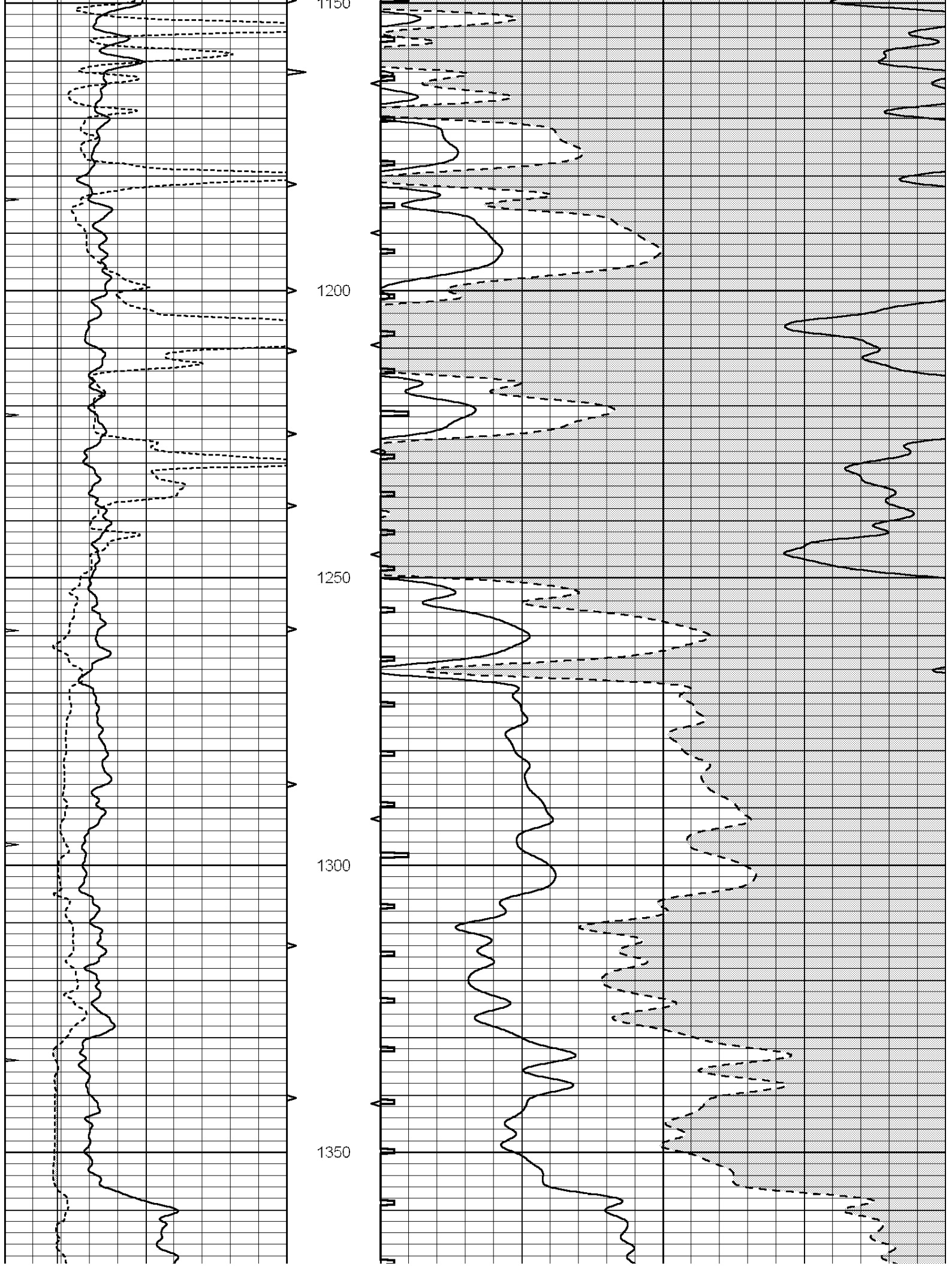


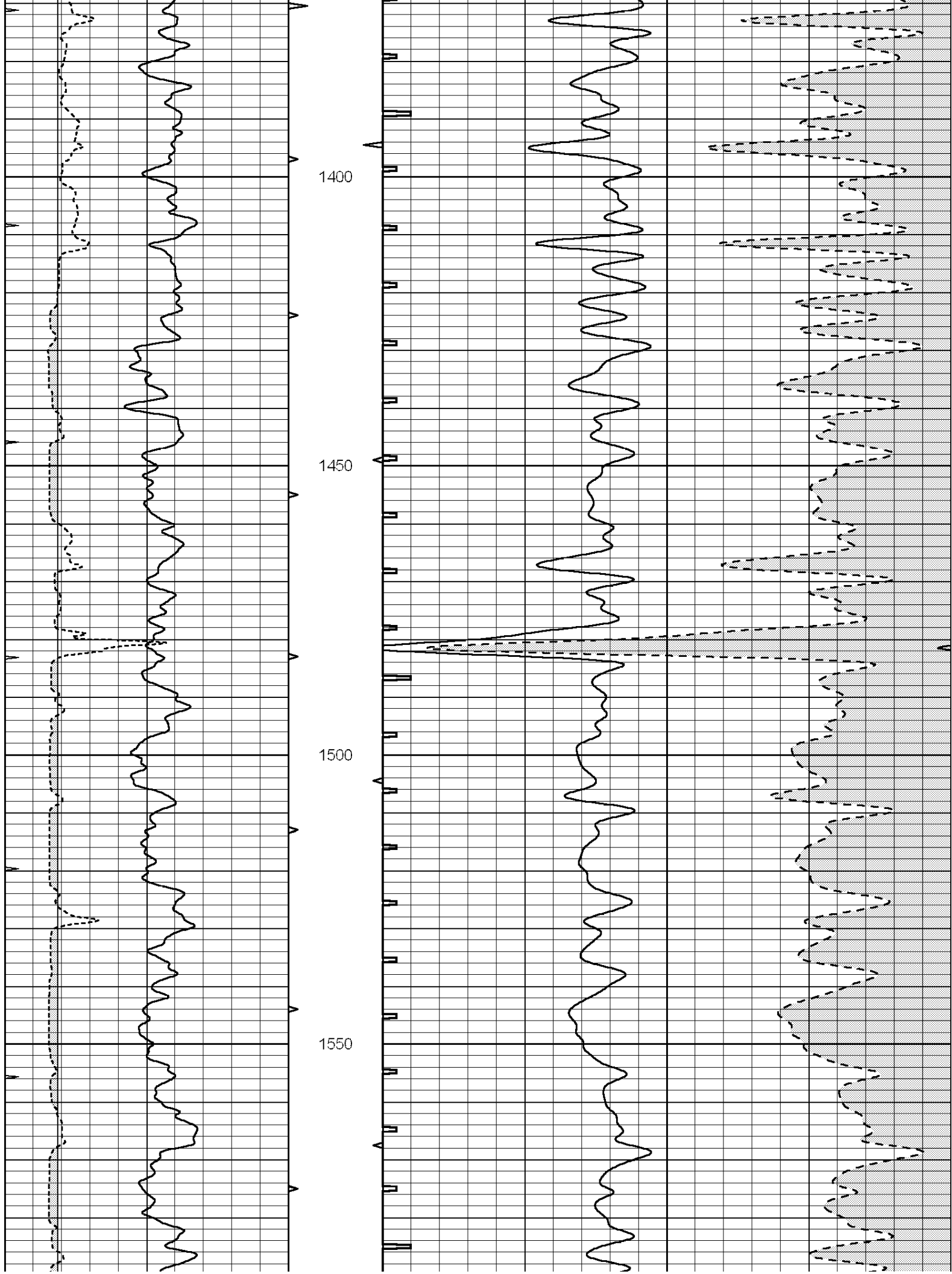


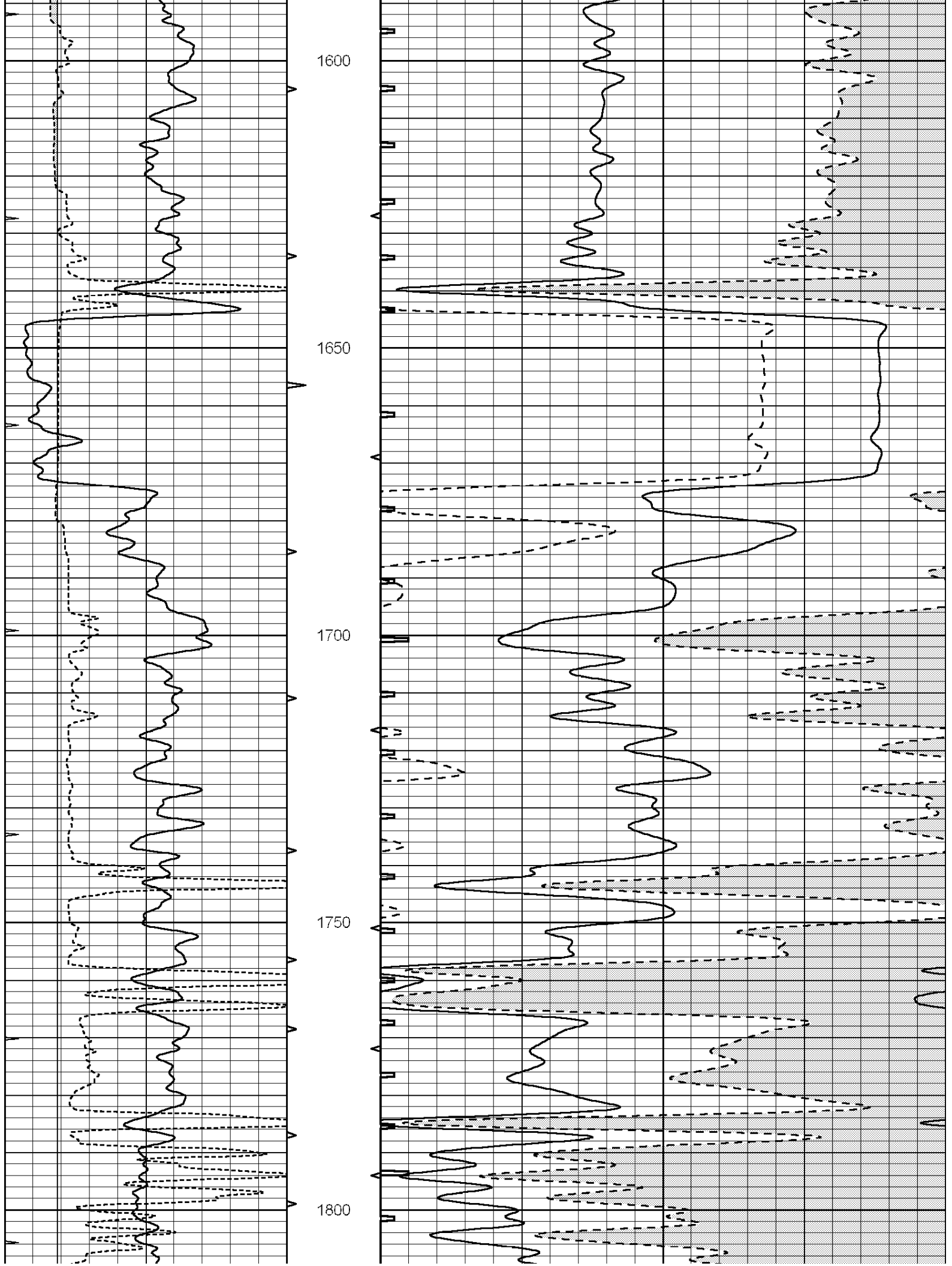


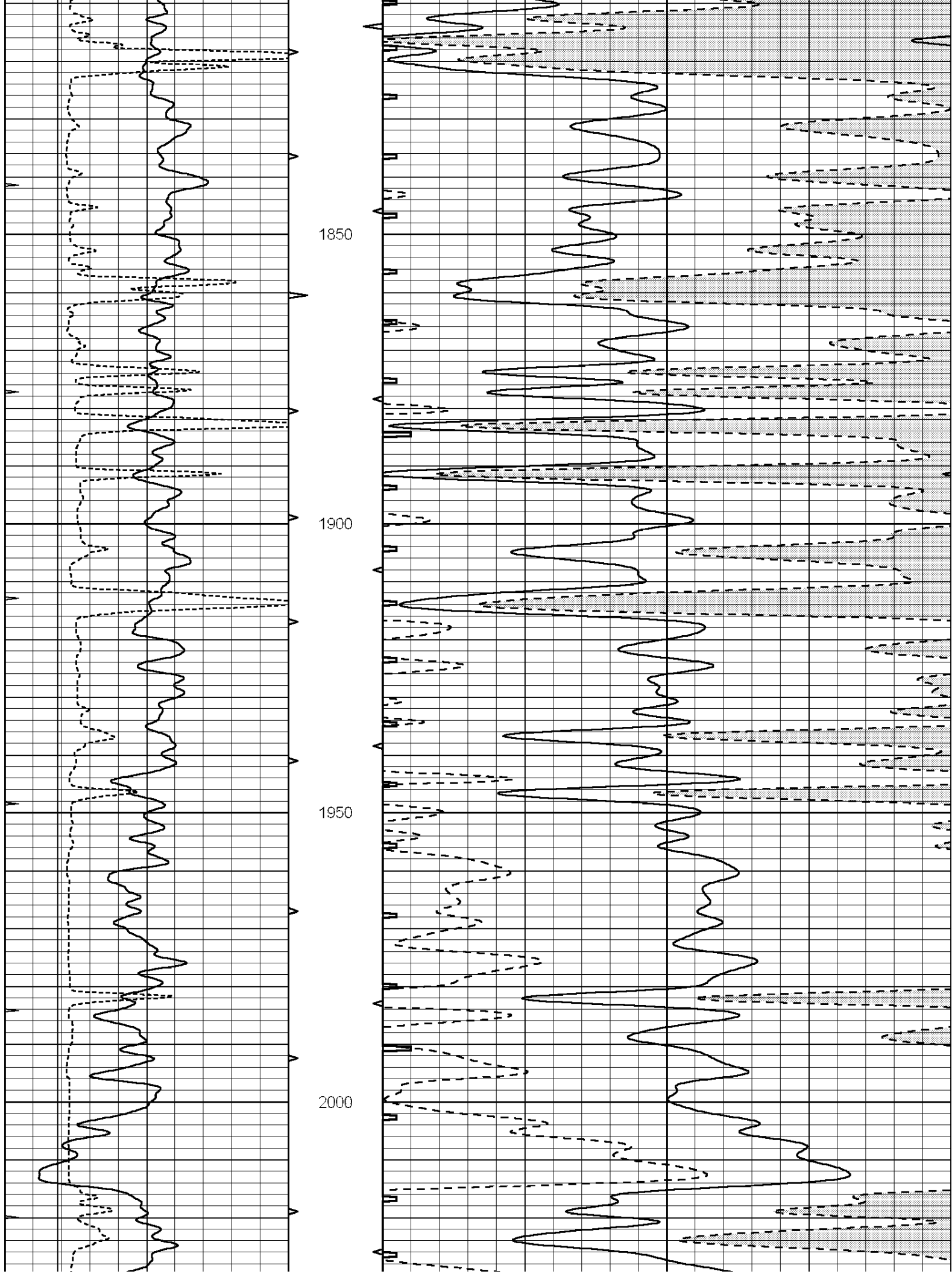


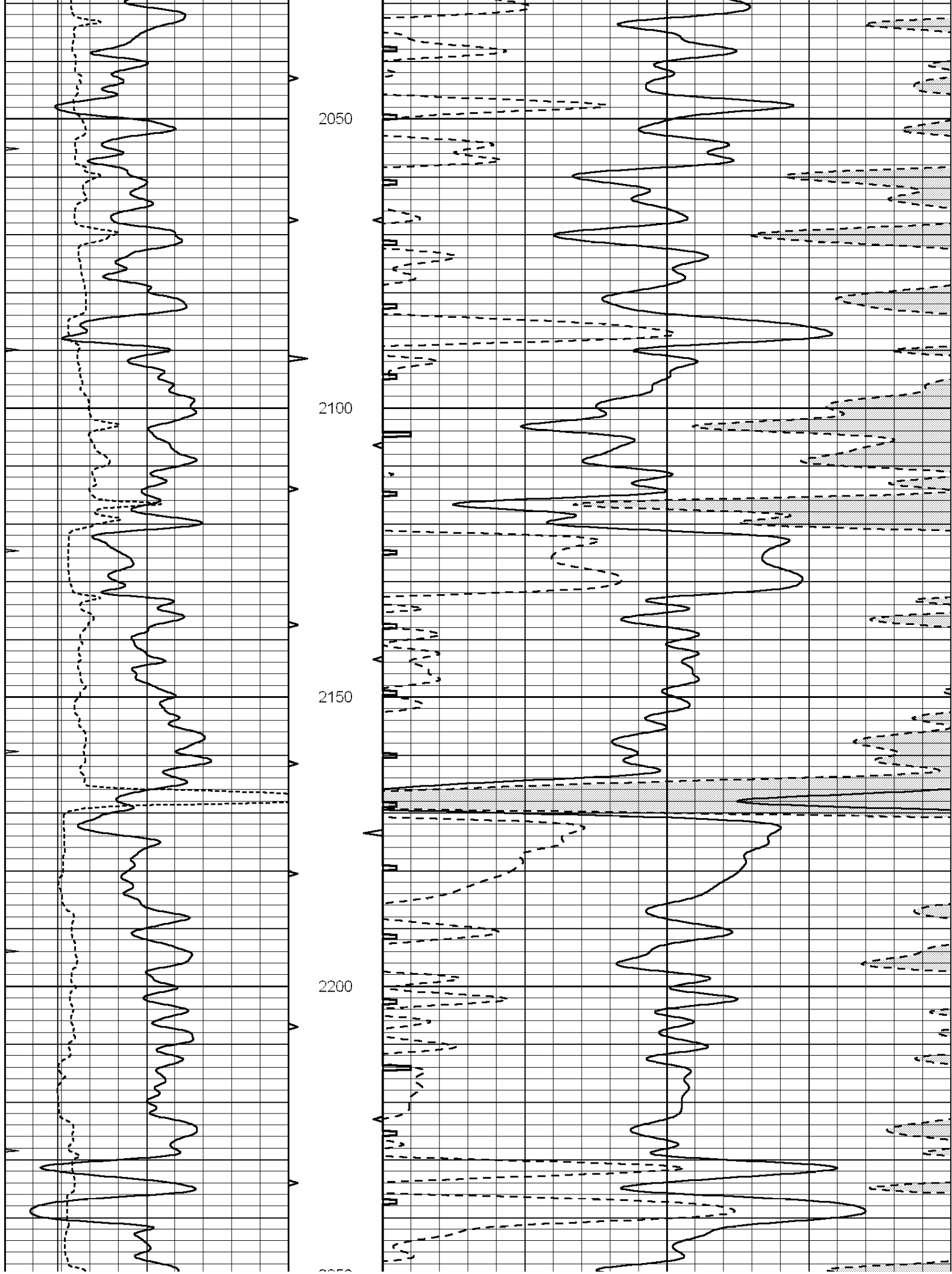


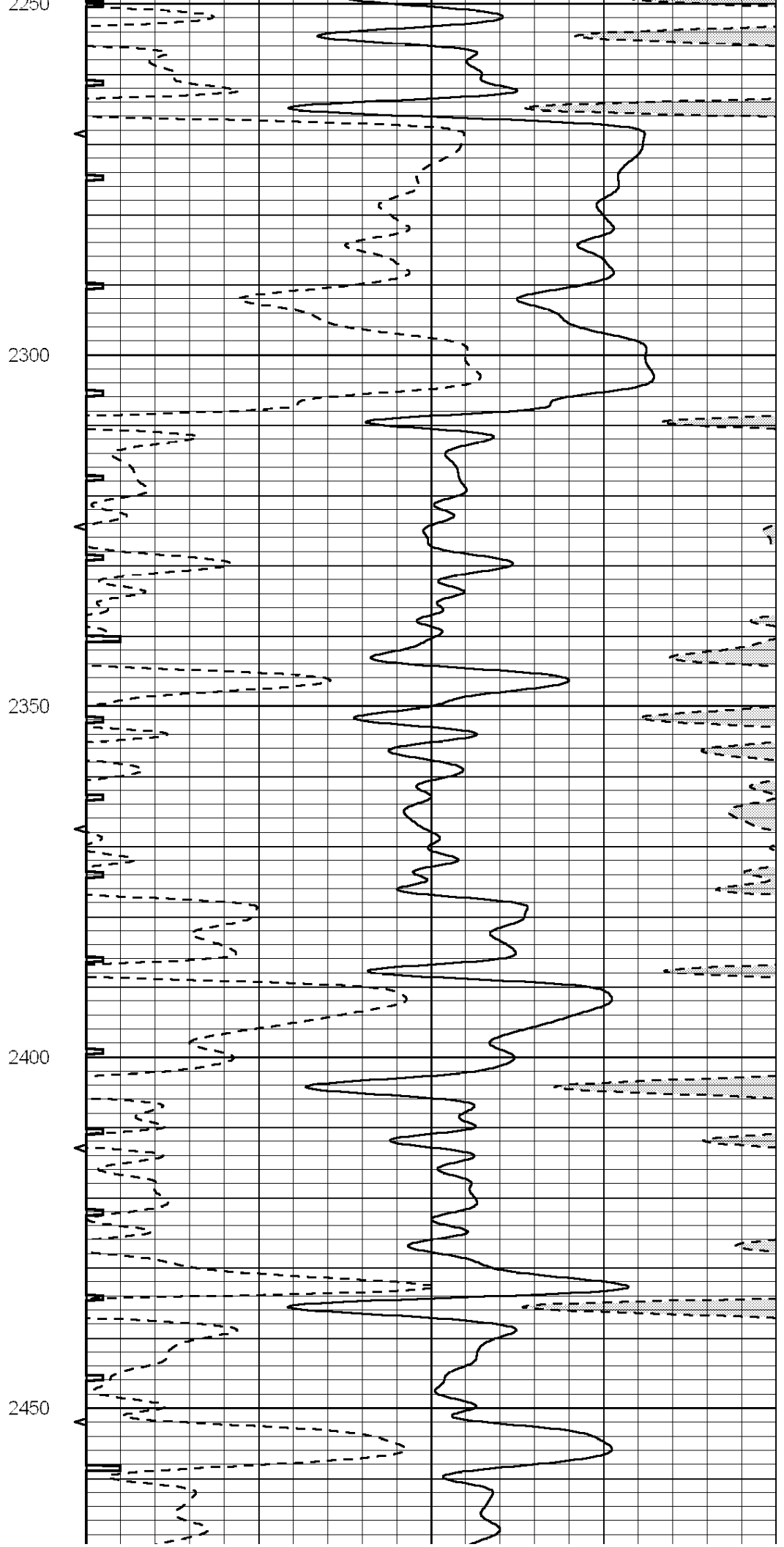
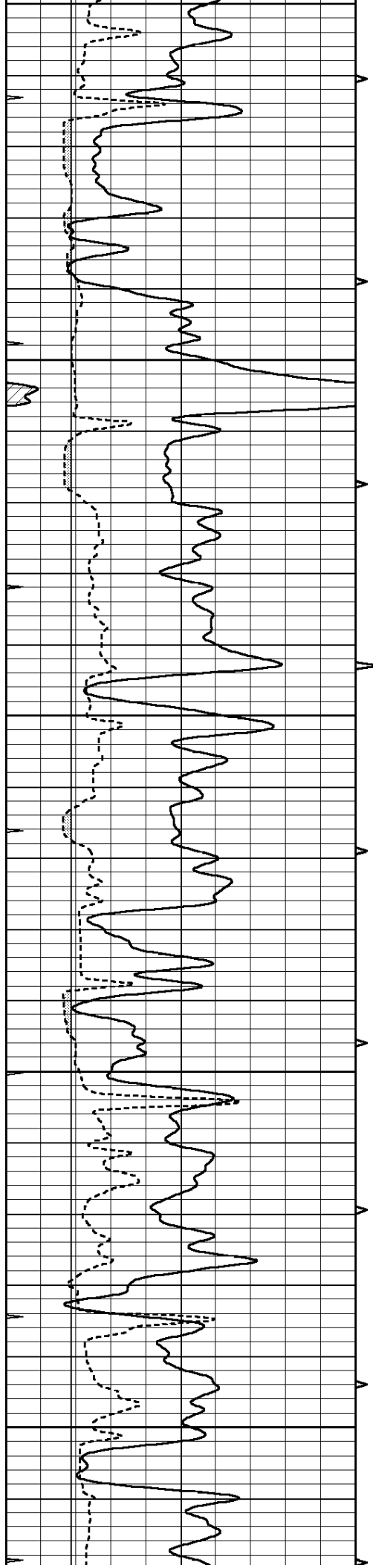


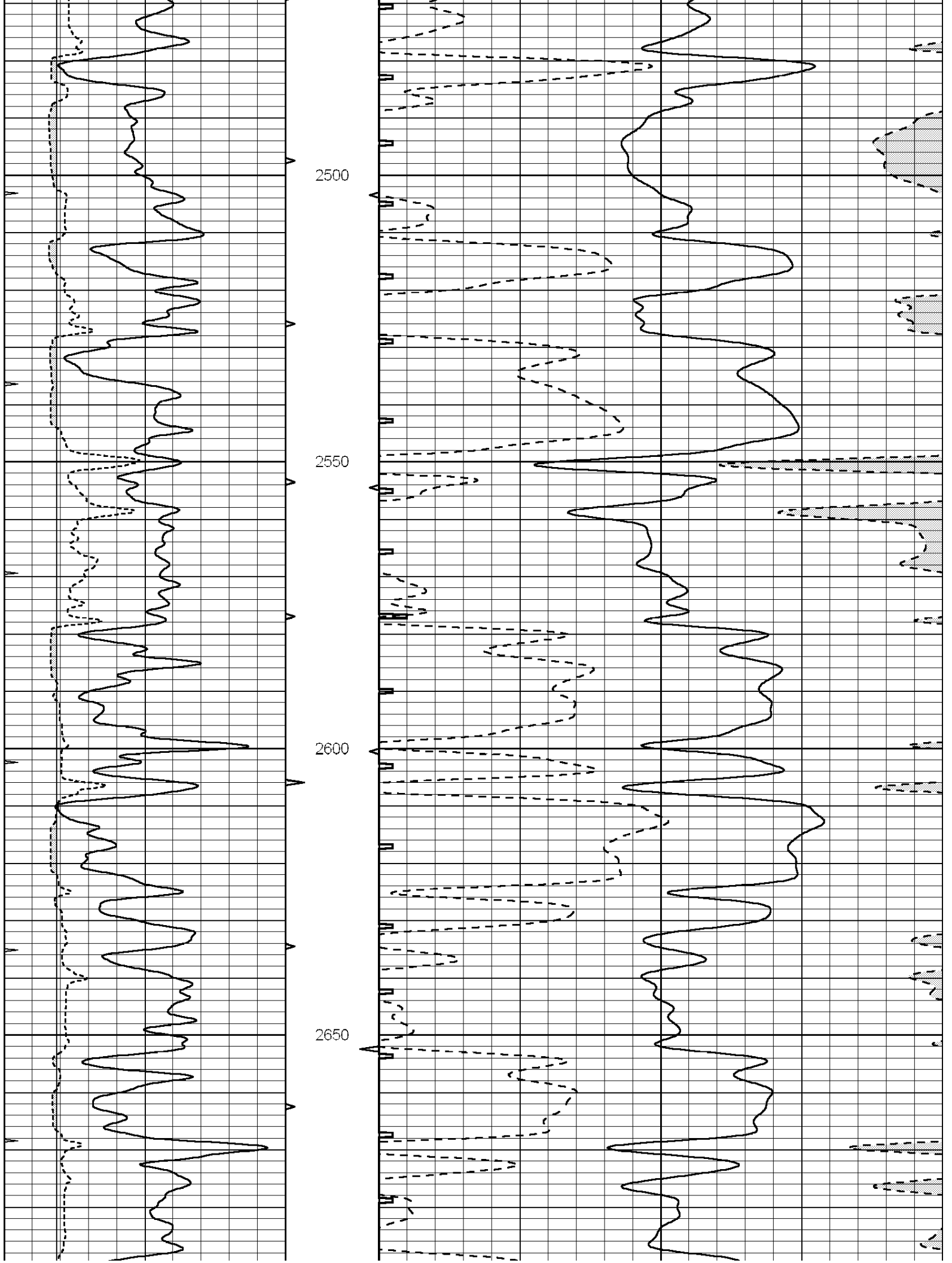


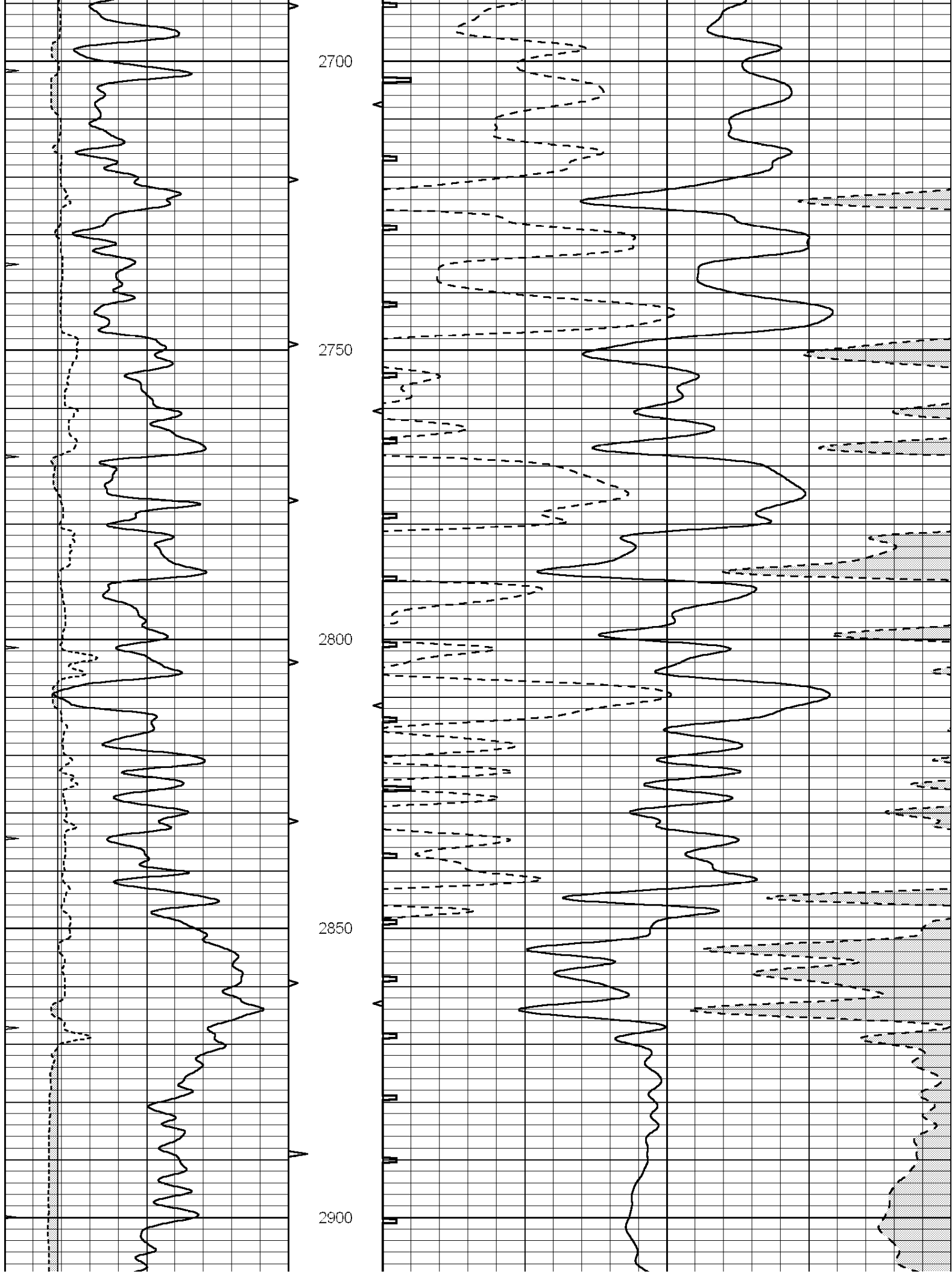


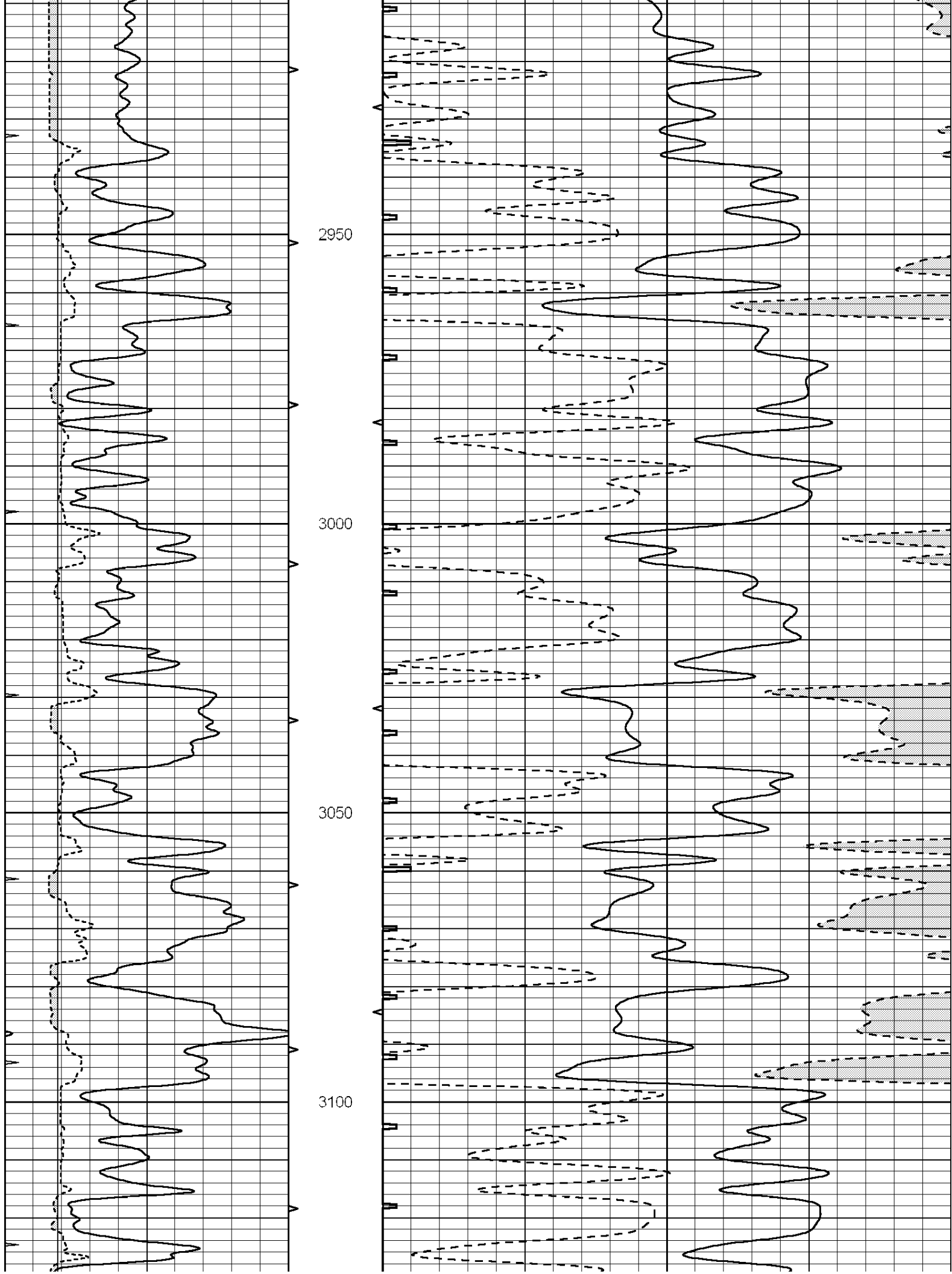


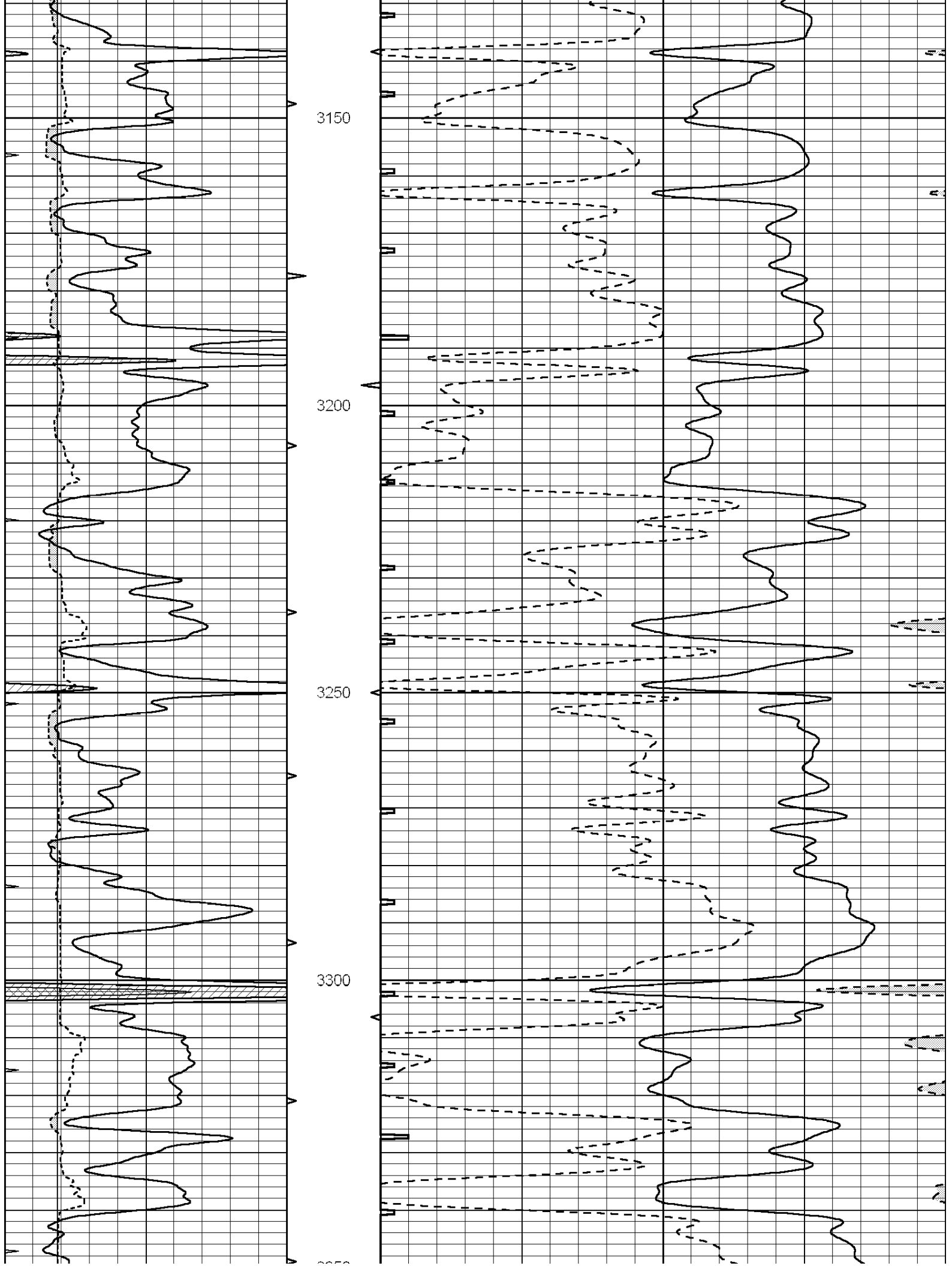


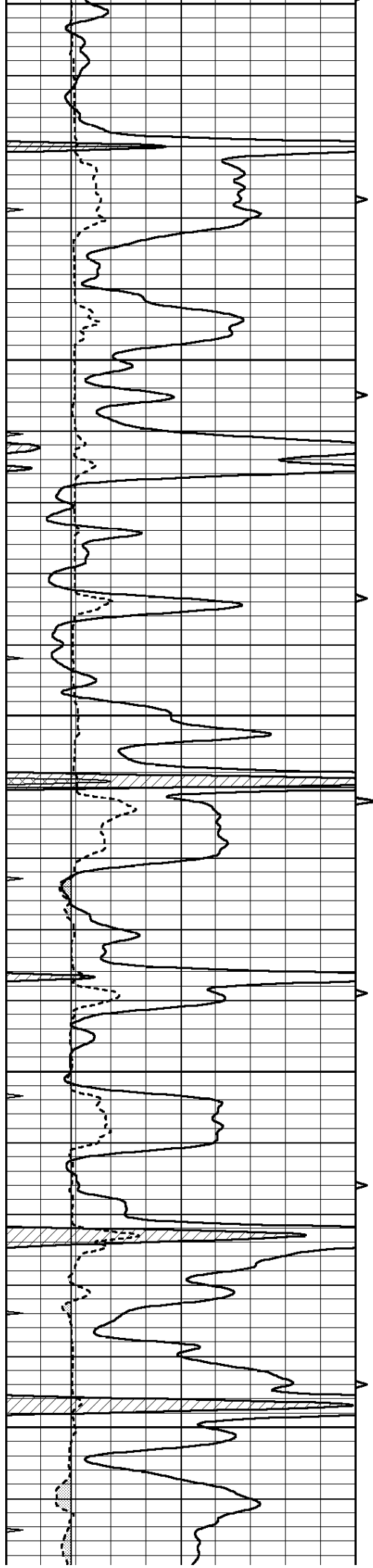












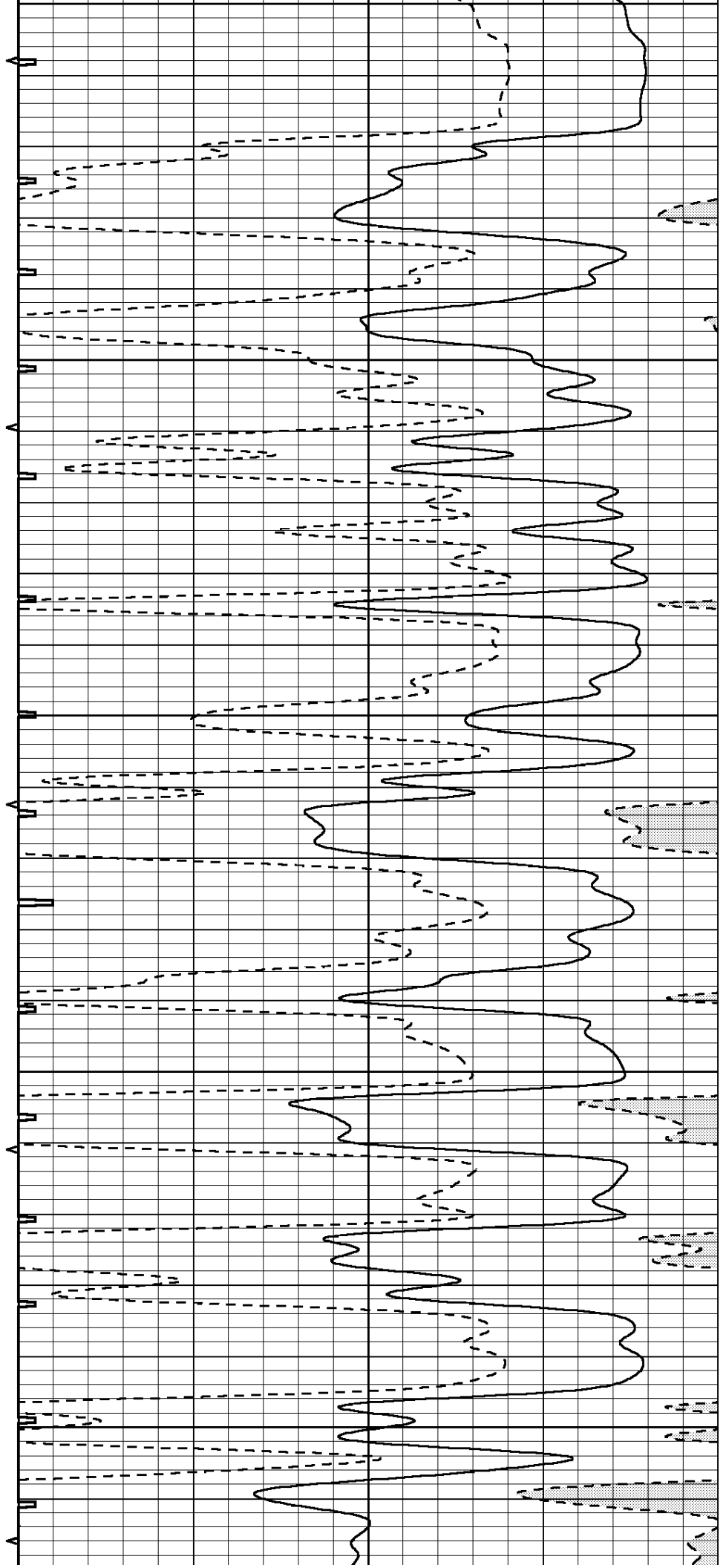
3350

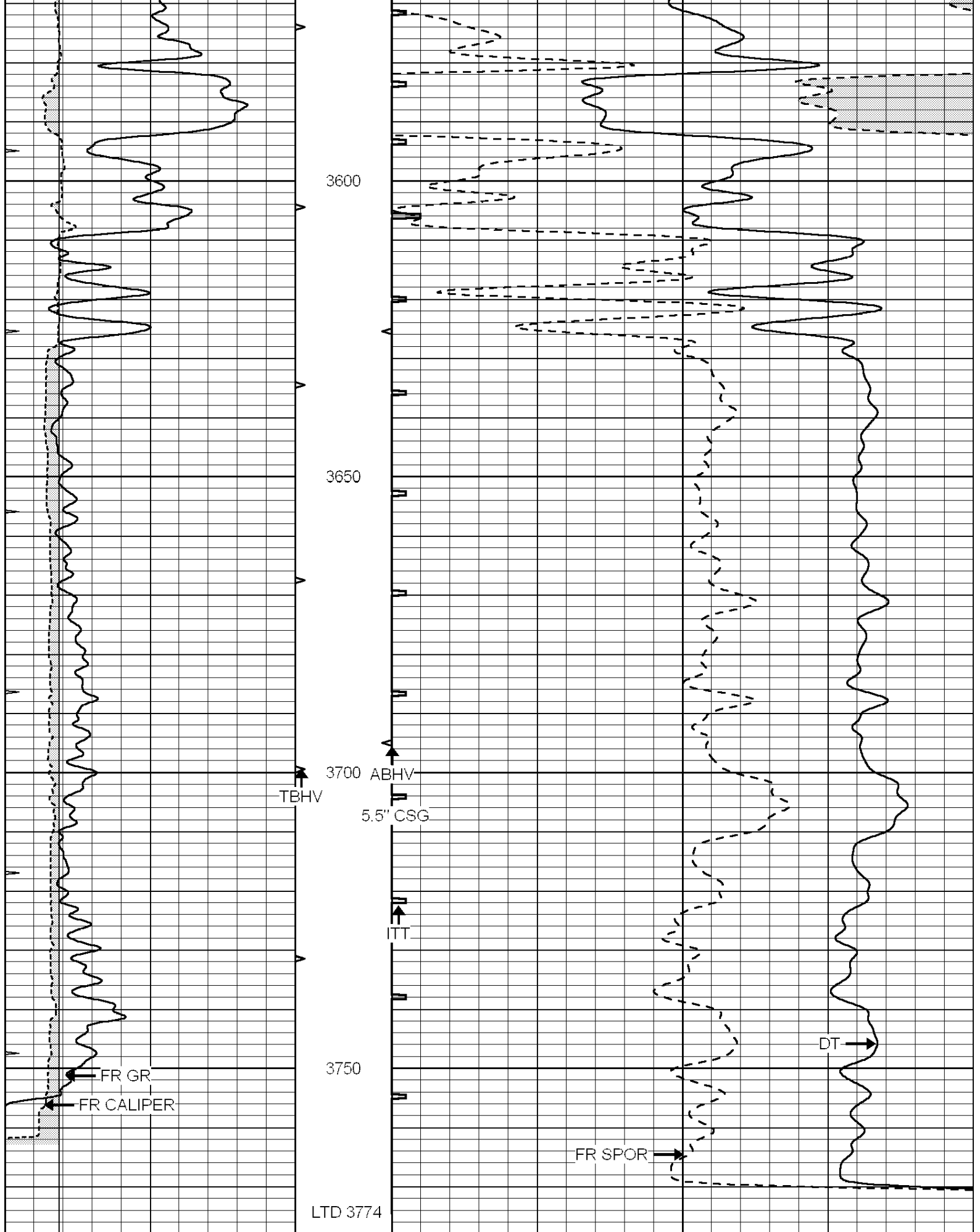
3400

3450

3500

3550





0	GAMMA RAY (GAPI)	150	ABHV	140	DELTA TIME (usec/ft)	40
6	CALIPER (in)	16	10 (ft3)	0 30	SONIC POROSITY (pu)	-10

MINMK

20

TBHV

ITT (msec)

20

0 (ft3) 10



# NABORS

## COMPLETION & PRODUCTION SERVICES CO.

# REPEAT SECTION

Database File: 25876pe.db  
 Dataset Pathname: pass5  
 Presentation Format: \_slt  
 Dataset Creation: Fri Sep 05 13:15:52 2014 by Log SOC 120430  
 Charted by: Depth in Feet scaled 1:240

0	GAMMA RAY (GAPI)	150	ABHV	140	DELTA TIME (usec/ft)	40
6	CALIPER (in)	16	10 (ft3)	0	30	SONIC POROSITY (pu)
0	MINMK	20	TBHV	0	ITT (msec)	20
			0 (ft3)	10		

