



Pioneer Energy Services

Dual Induction Log

API No.	15-009-26024-00-00	
Company	LB Exploration, Inc.	
Well	Chadd #1	
Field	Ames Northwest	
County	Barton	State
Location	652' FNL & 1982' FEL	
	Kansas	
Sec: 16	Twp: 18S	Rge: 11W
Permanent Datum	Ground Level	Elevation 1784
Log Measured From	Kelly Bushing	13 Ft. Above Perm. Datum
Drilling Measured From	Kelly Bushing	
		Other Services CNL/CDL MEL/BHCS
		Elevation K.B. 1797 D.F. 1784 G.L. 1784

Date	9/11/2014
Run Number	One
Depth Driller	3450
Depth Logger	3452
Bottom Logged Interval	3451
Top Log Interval	250
Casing Driller	8.625 @ 296
Casing Logger	290
Bit Size	7.875
Type Fluid in Hole	Chemical
Salinity, ppm CL	7000
Density / Viscosity	9.1 51
pH / Fluid Loss	9.0 10.0
Source of Sample	Flowline
Rm @ Meas. Temp	0.31 @ 75
Rmf @ Meas. Temp	0.23 @ 75
Rmc @ Meas. Temp	0.41 @ 75
Source of Rmf / Rmc	Charts
Rm @ BHT	0.21 @ 113
Operating Rig Time	5 Hours
Max Rec. Temp. F	113
Equipment Number	91
Location	Hays
Recorded By	D. Schmidt
Witnessed By	Jim Mulsgrove
	M. Beougher

<<< Fold Here >>>

All interpretations are opinions based on inferences from electrical or other measurements and we cannot and do not guarantee the accuracy or correctness of any interpretation, and we shall not, except in the case of gross or willful negligence on our part, be liable or responsible for any loss, costs, damages, or expenses incurred or sustained by anyone resulting from any interpretation made by any of our officers, agents or employees. These interpretations are also subject to our general terms and conditions set out in our current Price Schedule.

Comments

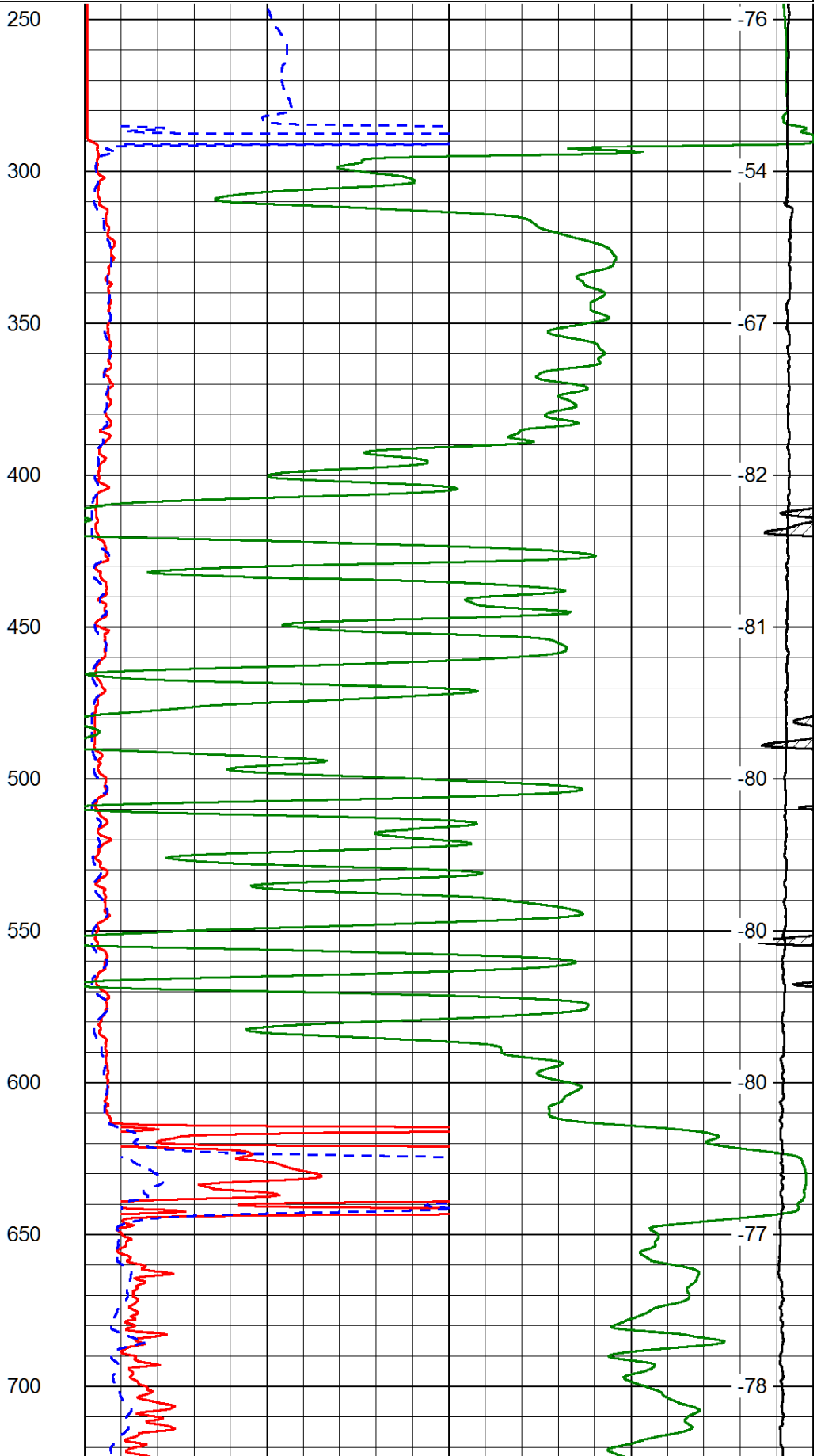
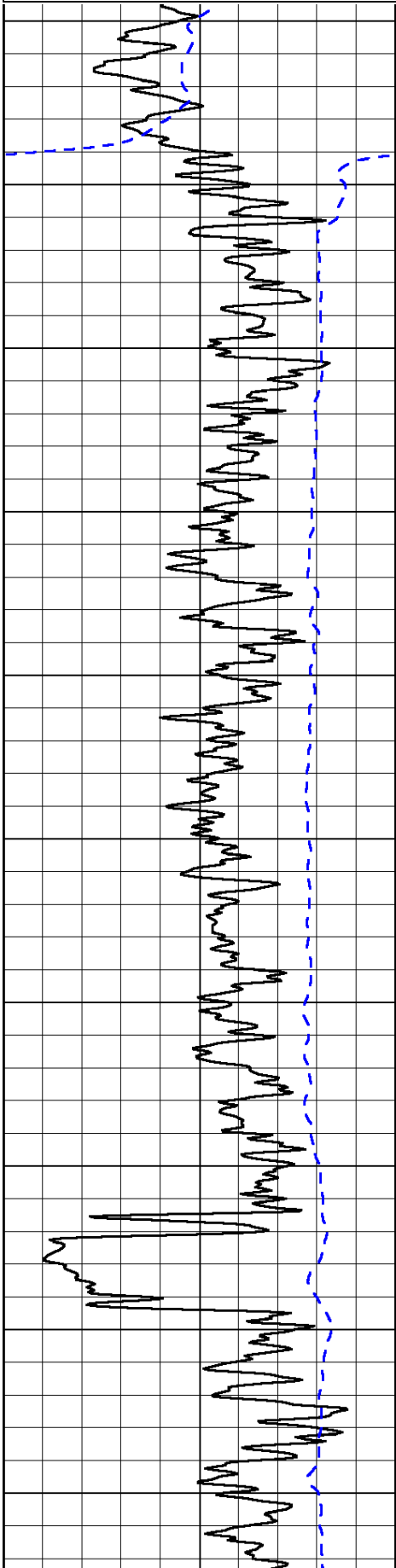
Thank you for using Log-Tech, Inc.
 (785) 625-3858
 Claflin,
 South on NE 130 Ave to Hwy 156,
 1 West on Hwy 156,
 East into

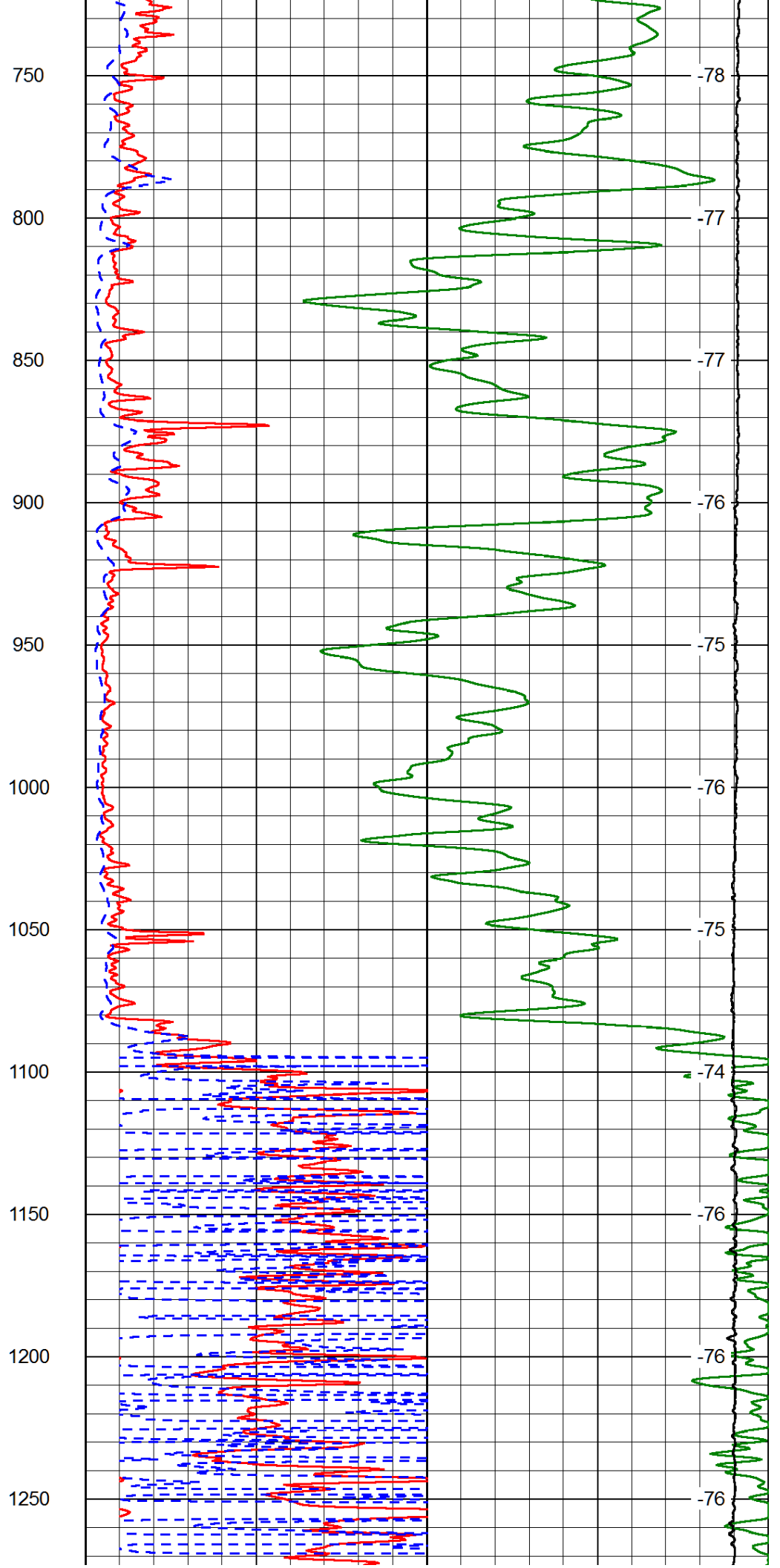
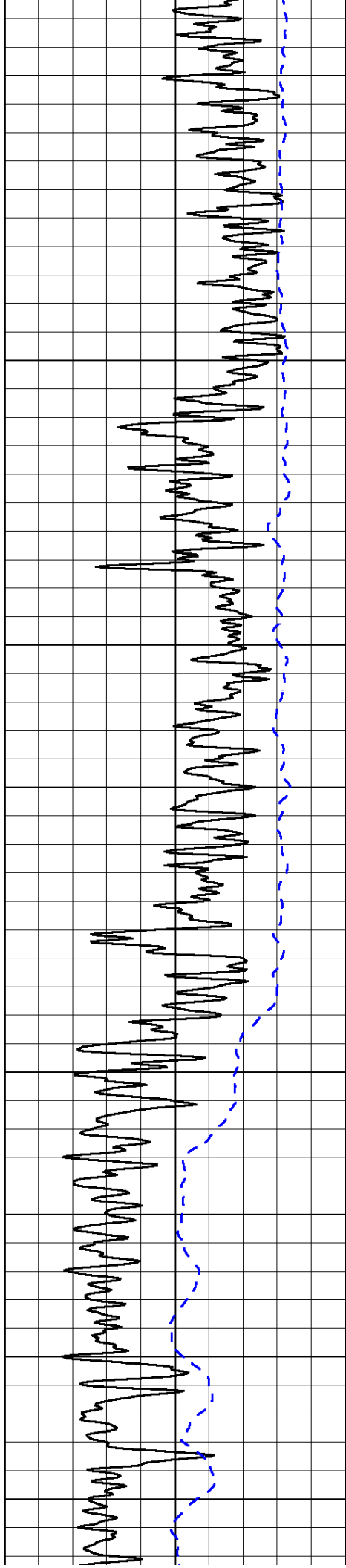
Database File: lb_chadd_1hd.db
 Dataset Pathname: dil/lbstack
 Presentation Format: dil2in
 Dataset Creation: Thu Sep 11 06:31:47 2014
 Charted by: Depth in Feet scaled 1:600

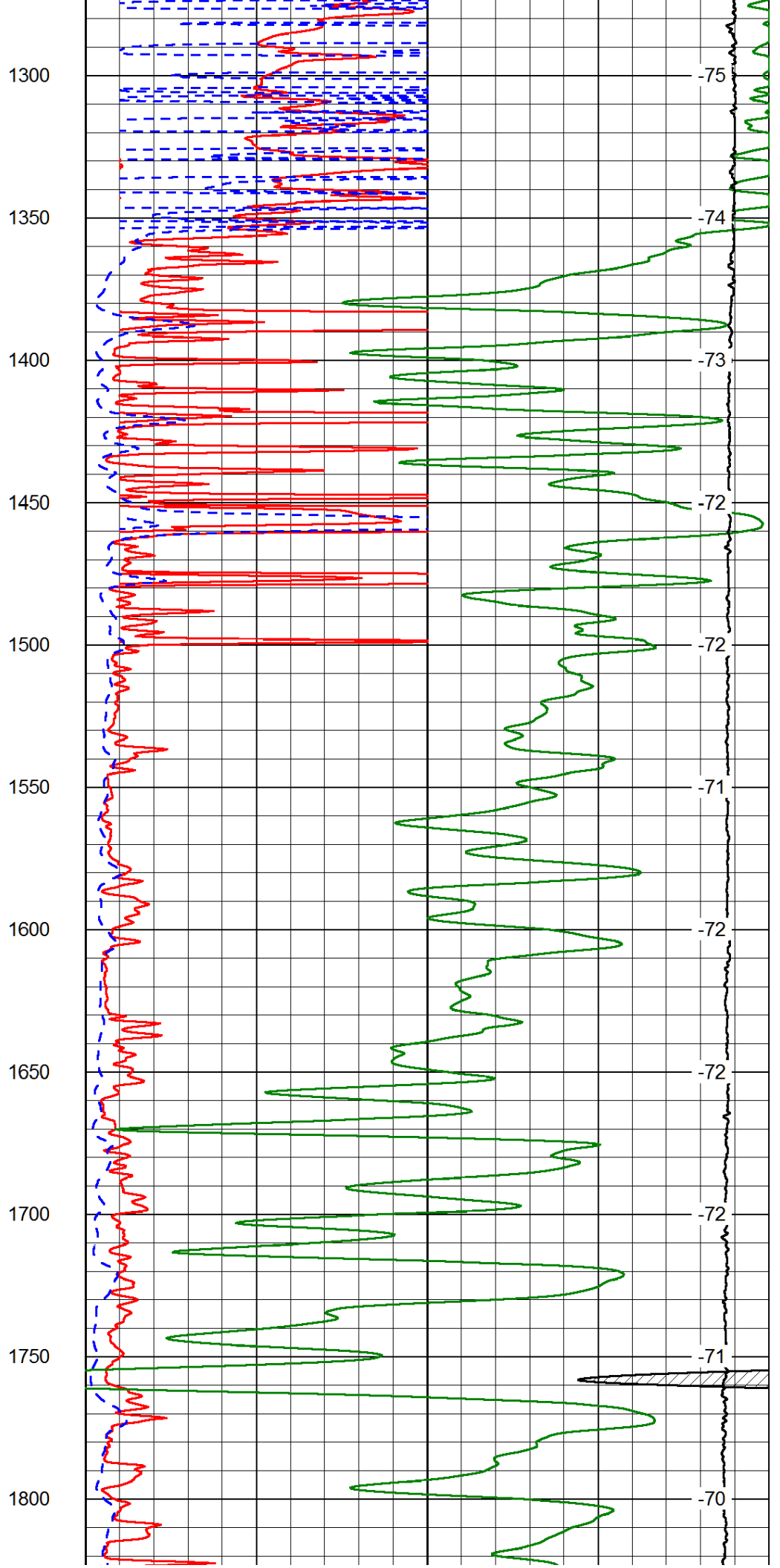
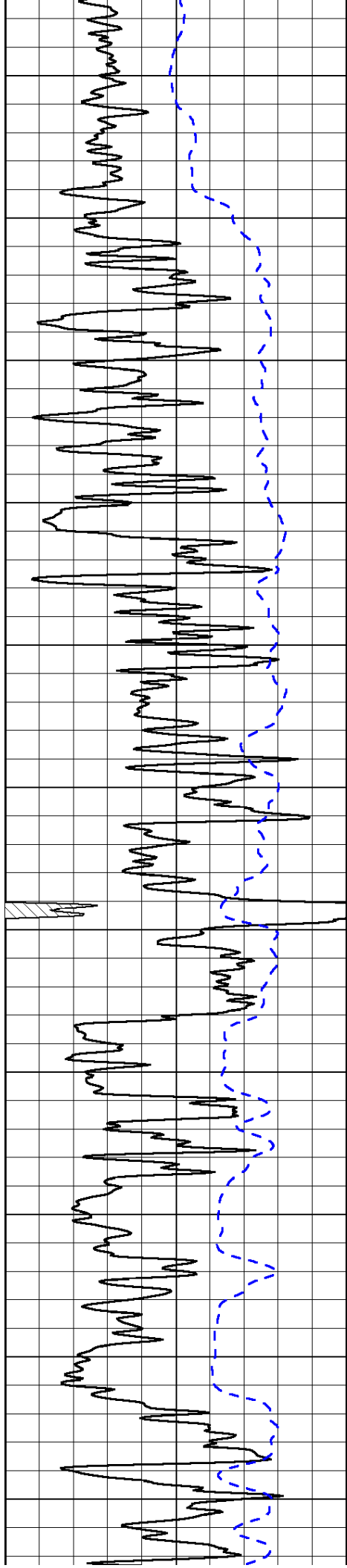
0	Gamma Ray	150
-200	SP (mV)	0

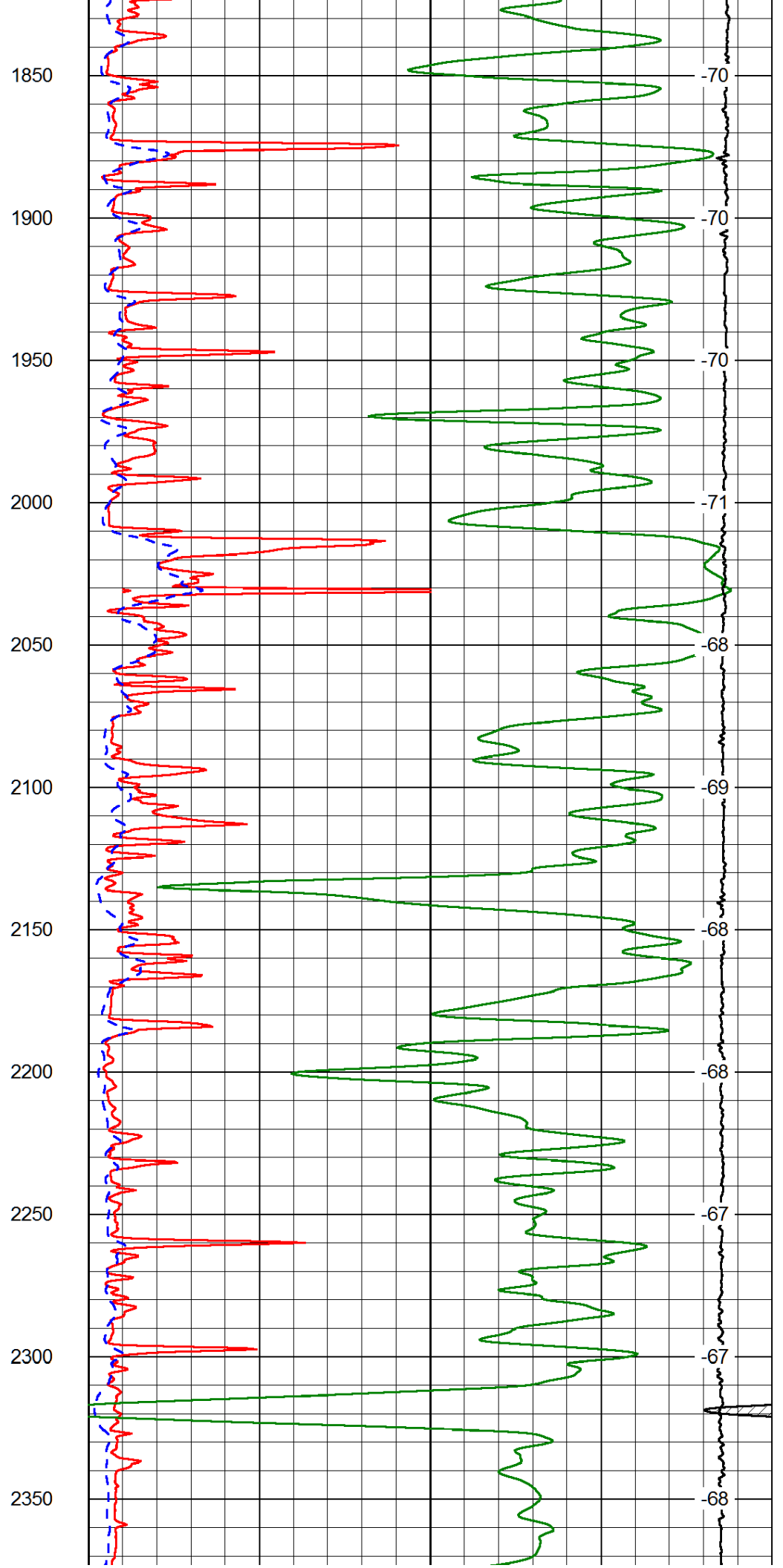
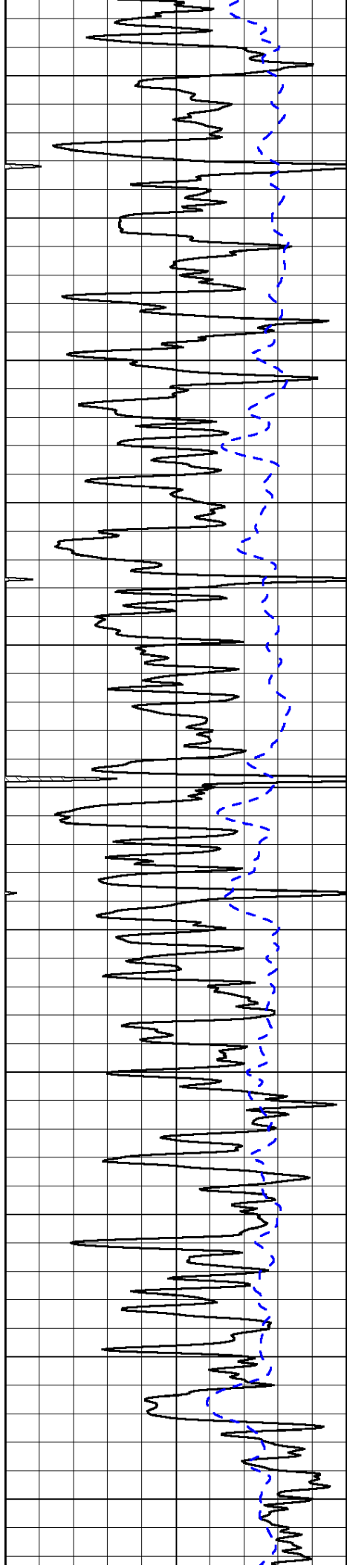
0	Shallow Resistivity	50
0	Deep Resistivity	50
1000	Conductivity	0
15000	Line Tension	0
50	Shallow Resistivity	500
50	Deep Resistivity	500

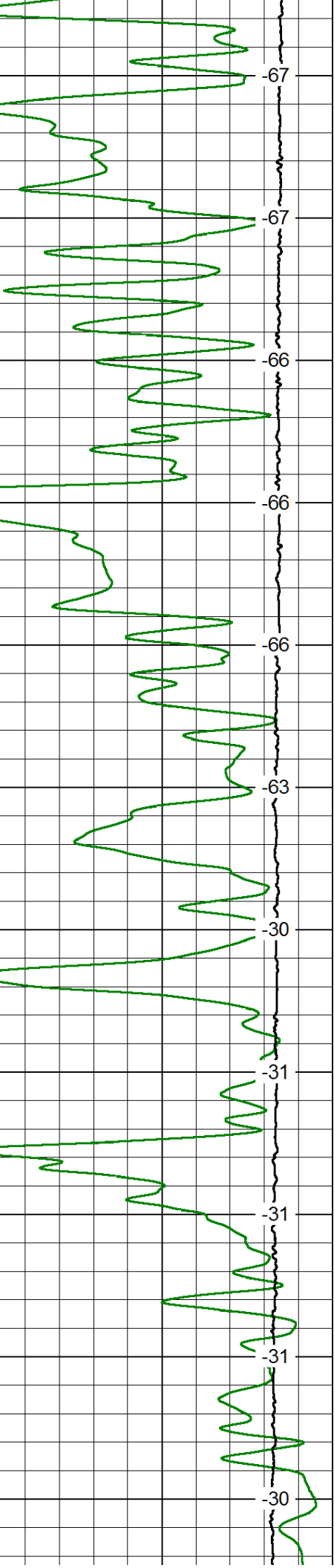
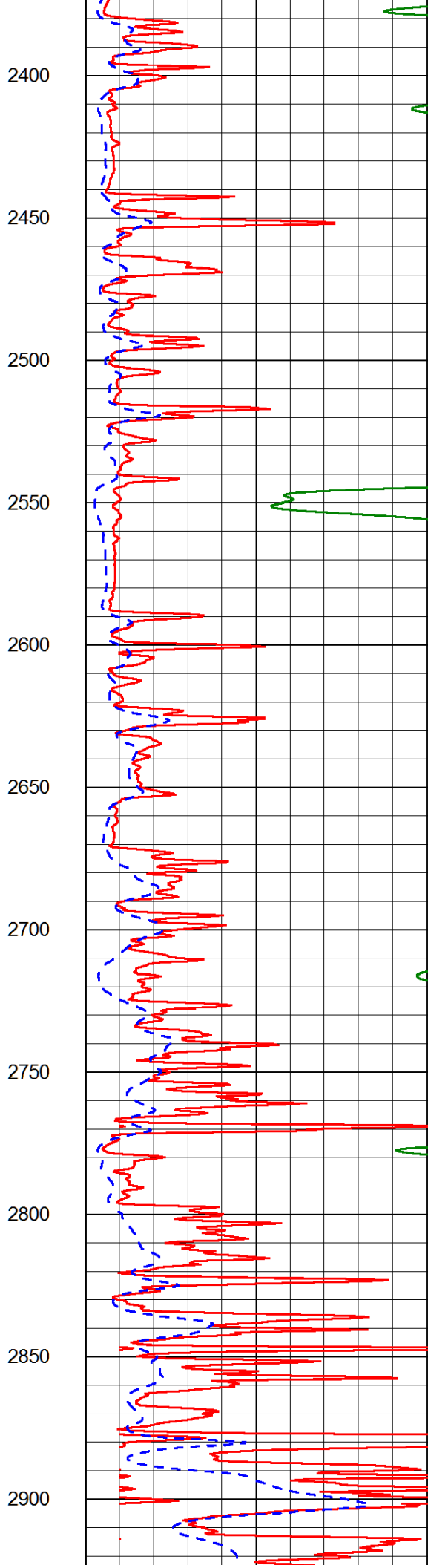
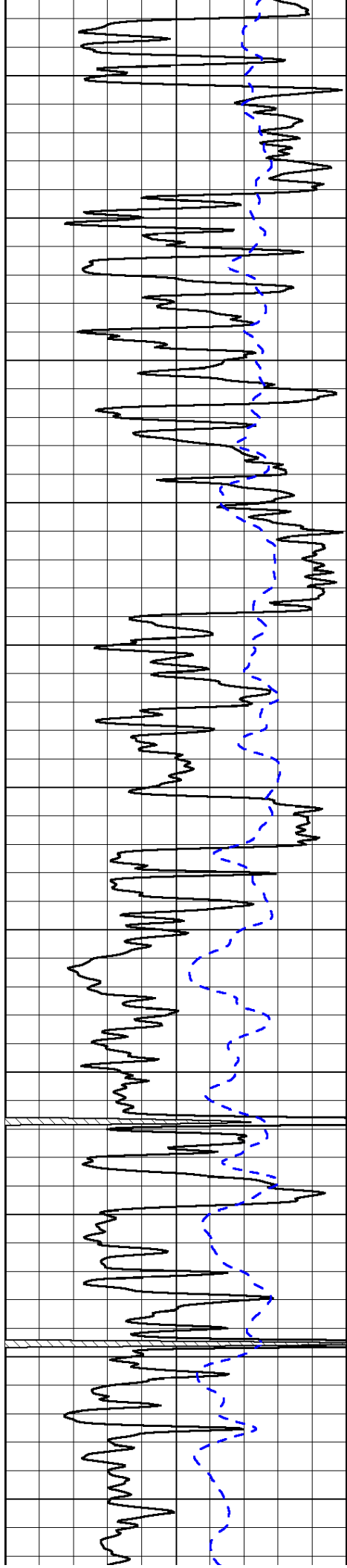
LSPD

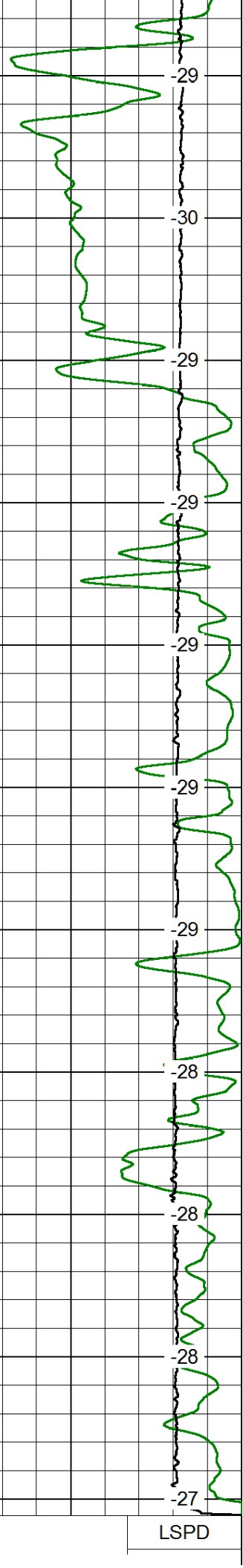
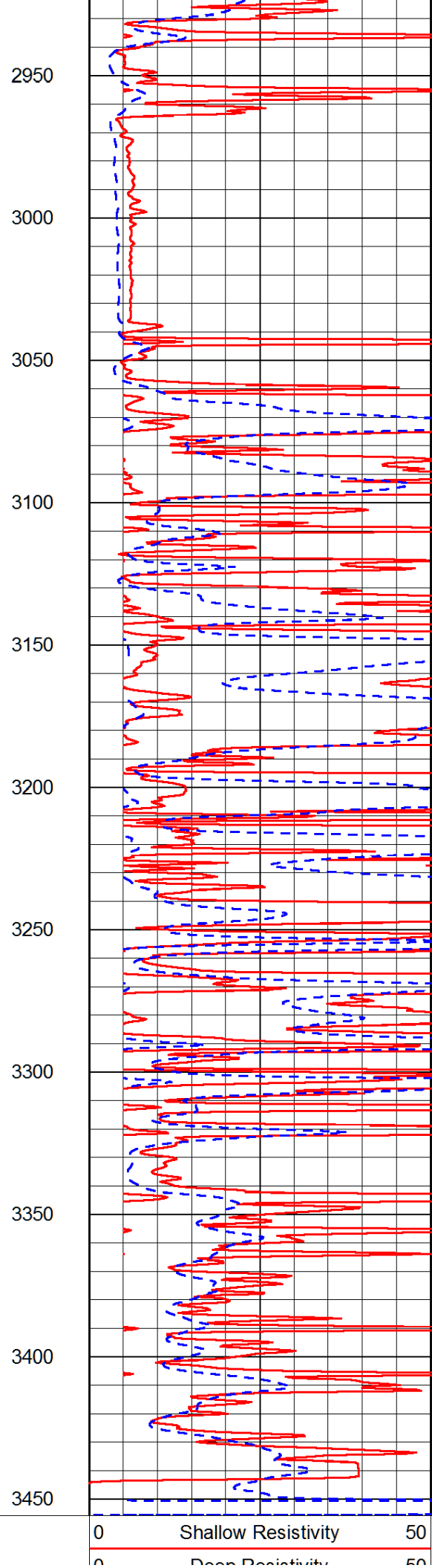
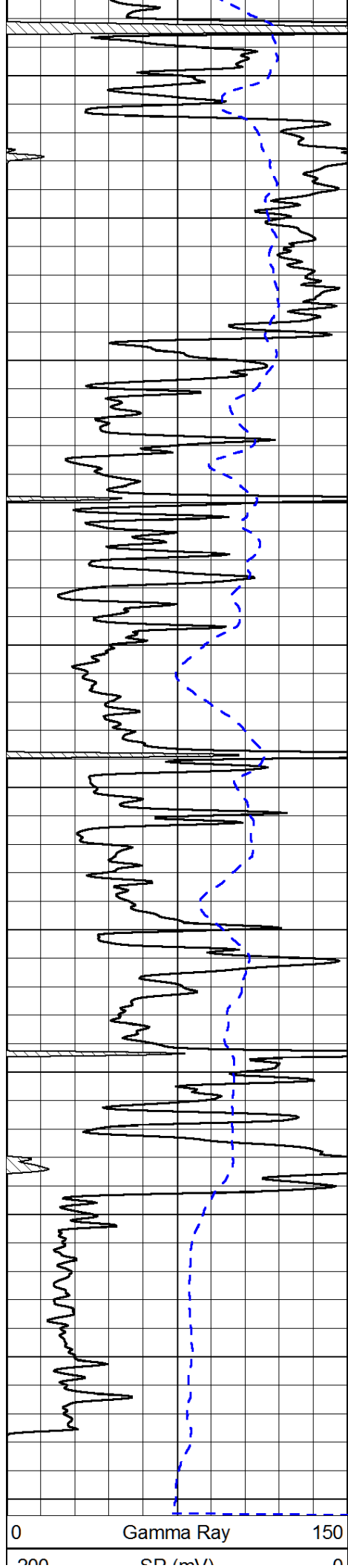












0 Gamma Ray 150
200 SP (mV) 0

0 Shallow Resistivity 50
0 Deep Resistivity 50

LSPD

-200	SP (mV)	0
------	---------	---

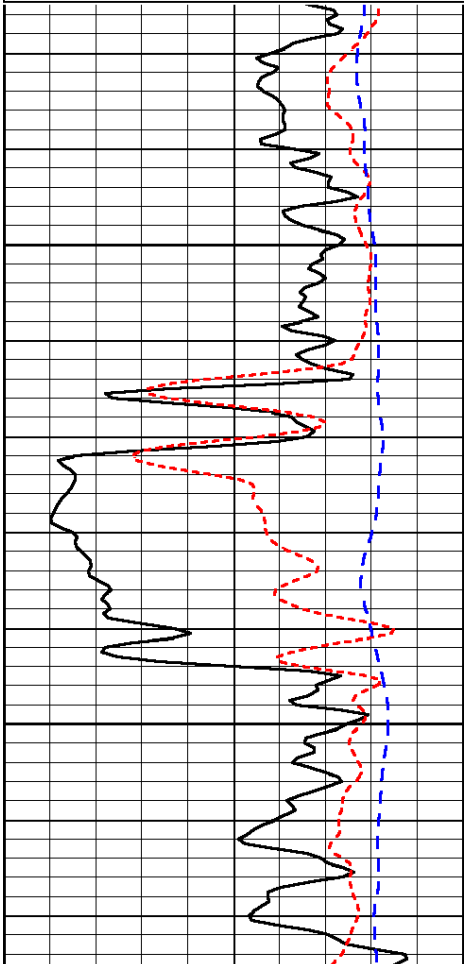
0	Deep Resistivity	50
1000	Conductivity	0
15000	Line Tension	0
50	Shallow Resistivity	500
50	Deep Resistivity	500

Database File: lb_chadd_1hd.db
 Dataset Pathname: dil/lbstack
 Presentation Format: dil
 Dataset Creation: Thu Sep 11 06:31:47 2014
 Charted by: Depth in Feet scaled 1:240

0	Gamma Ray	150
-160	RXO/RT	40
-200	SP (mV)	0

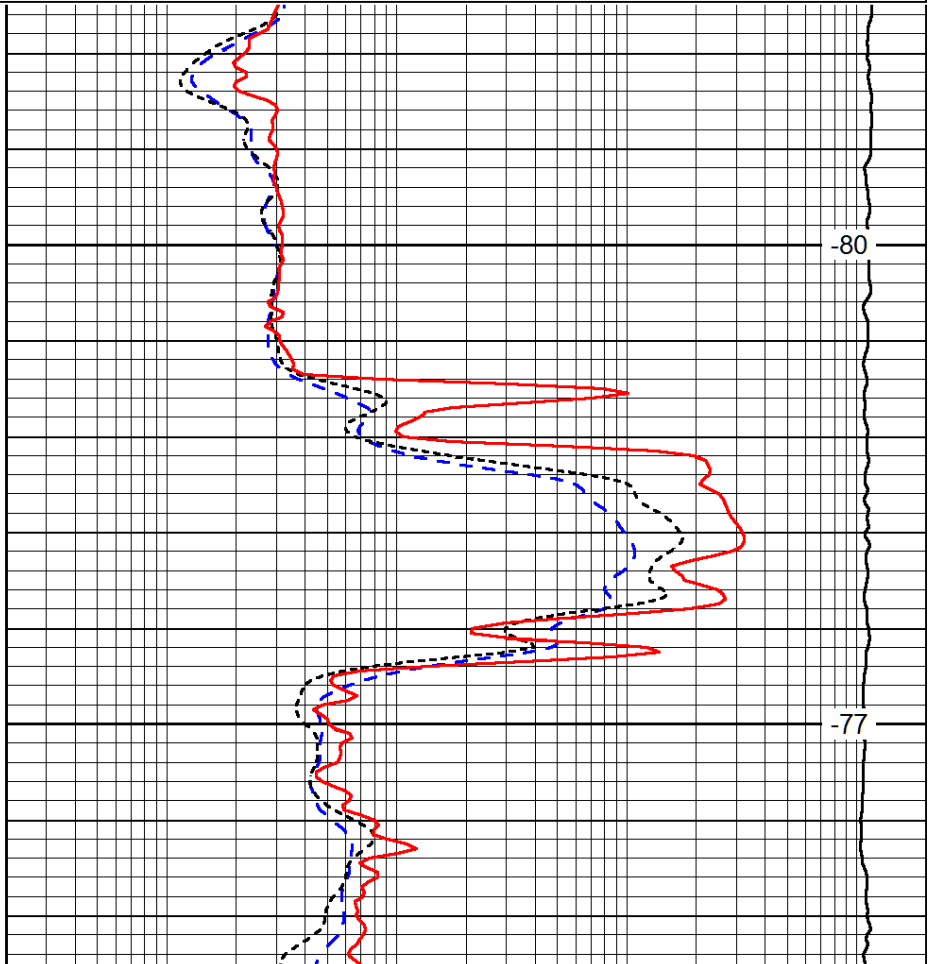
0.2	Deep Resistivity	2000
0.2	Medium Resistivity	2000
0.2	Shallow Resistivity	2000
10000	Line Tension	0

LSPD



600

650



-80

-77

0	Gamma Ray	150
-160	RXO/RT	40
-200	SP (mV)	0

0.2	Deep Resistivity	2000
0.2	Medium Resistivity	2000
0.2	Shallow Resistivity	2000
10000	Line Tension	0

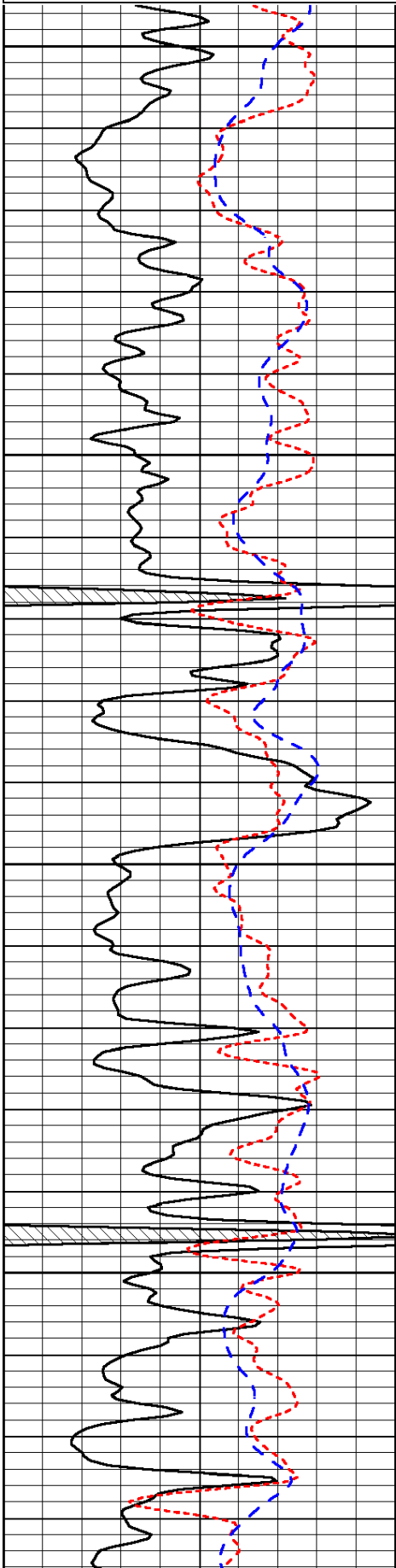
LSPD

Database File: lb_chadd_1hd.db
 Dataset Pathname: dil/lbstack
 Presentation Format: dil
 Dataset Creation: Thu Sep 11 06:31:47 2014
 Charted by: Depth in Feet scaled 1:240

0	Gamma Ray	150
-160	RXO/RT	40
-200	SP (mV)	0

0.2	Deep Resistivity	2000
0.2	Medium Resistivity	2000
0.2	Shallow Resistivity	2000
10000	Line Tension	0

LSPD

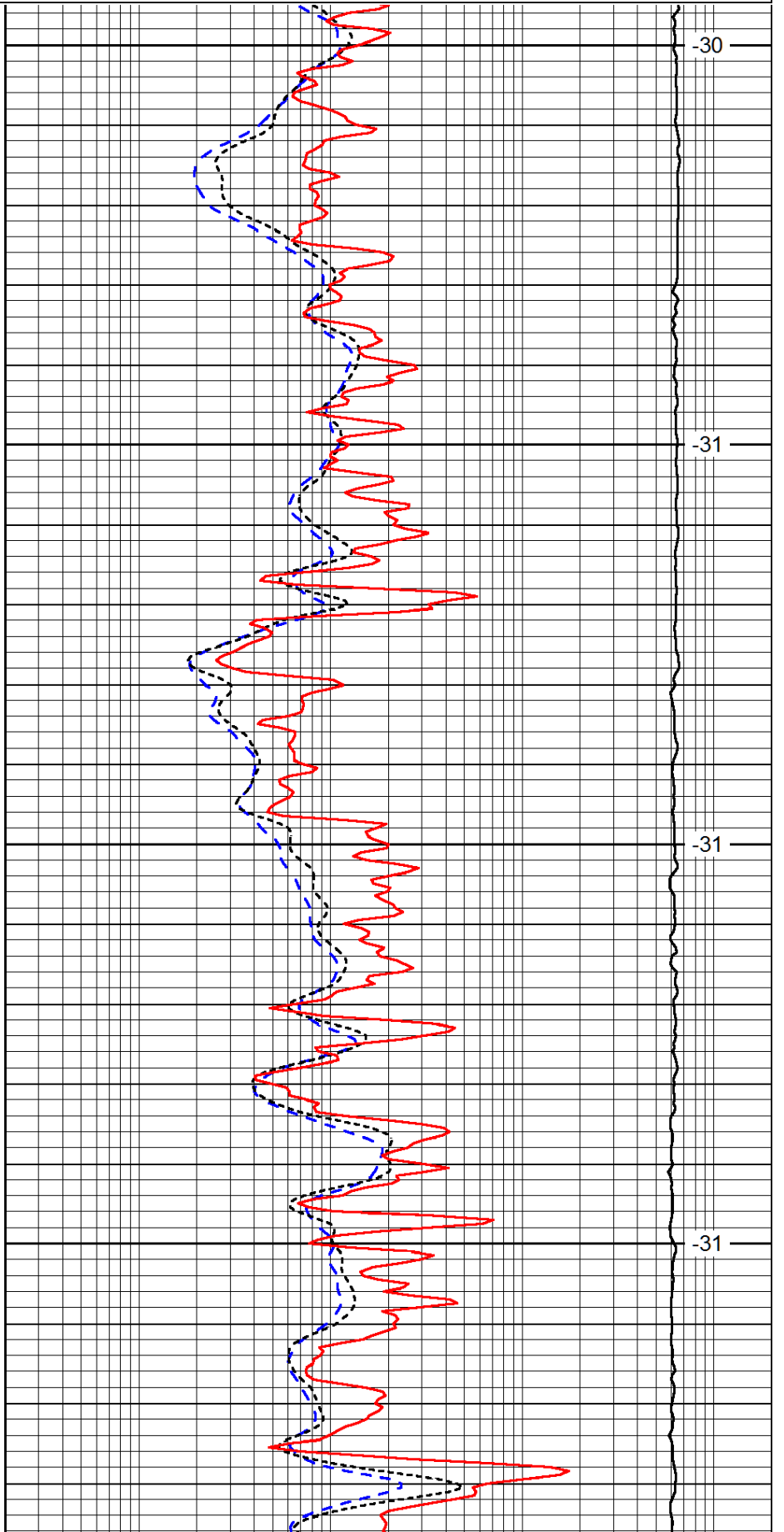


2700

2750

2800

2850

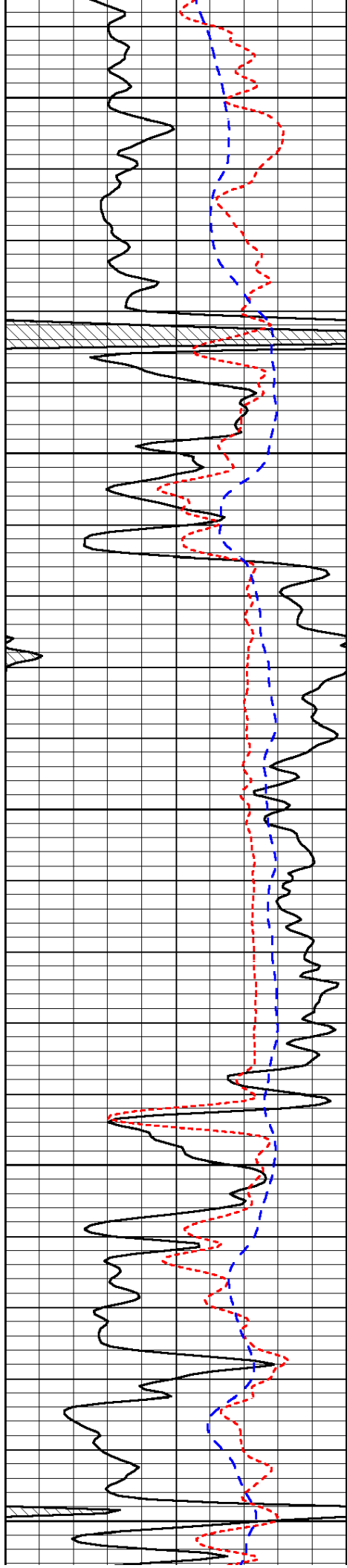


-30

-31

-31

-31



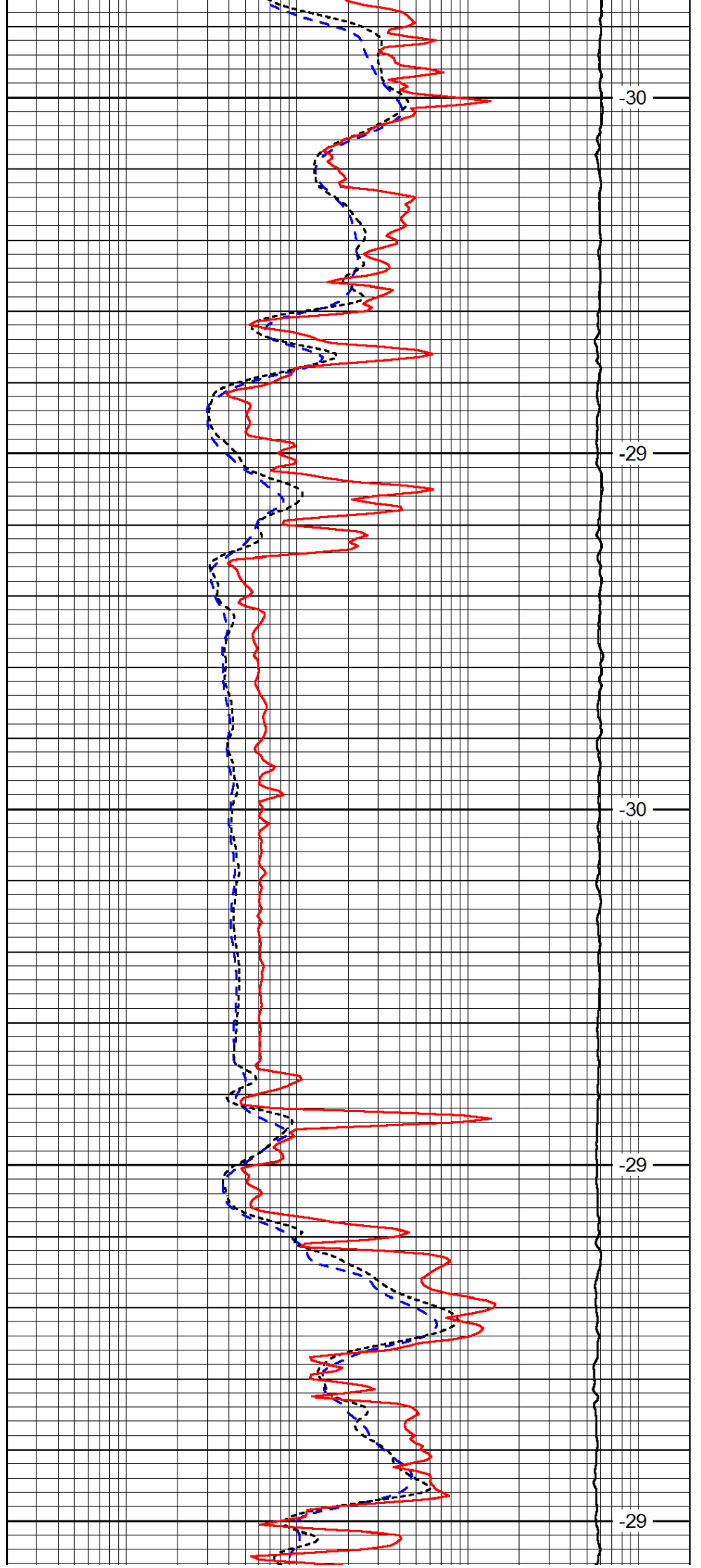
2900

2950

3000

3050

3100



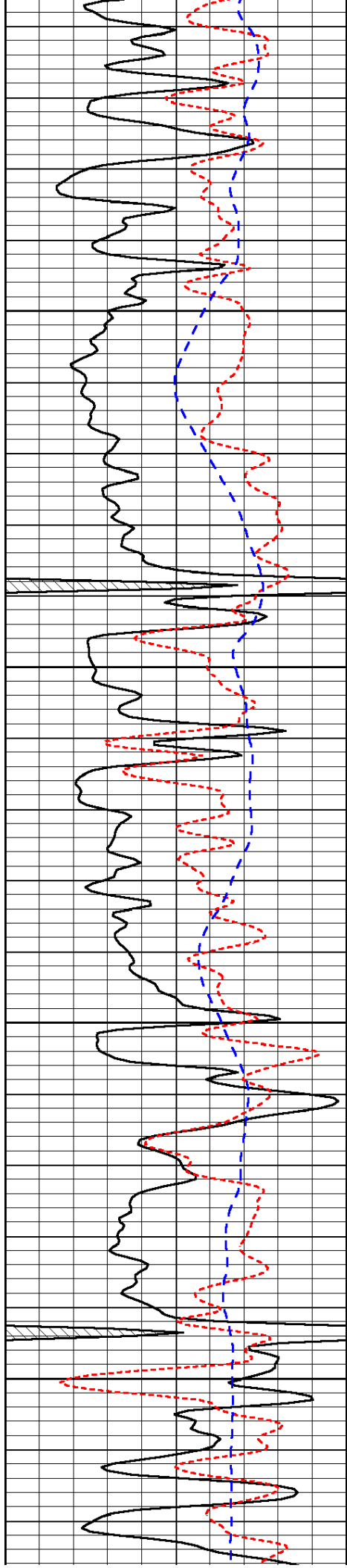
-30

-29

-30

-29

-29

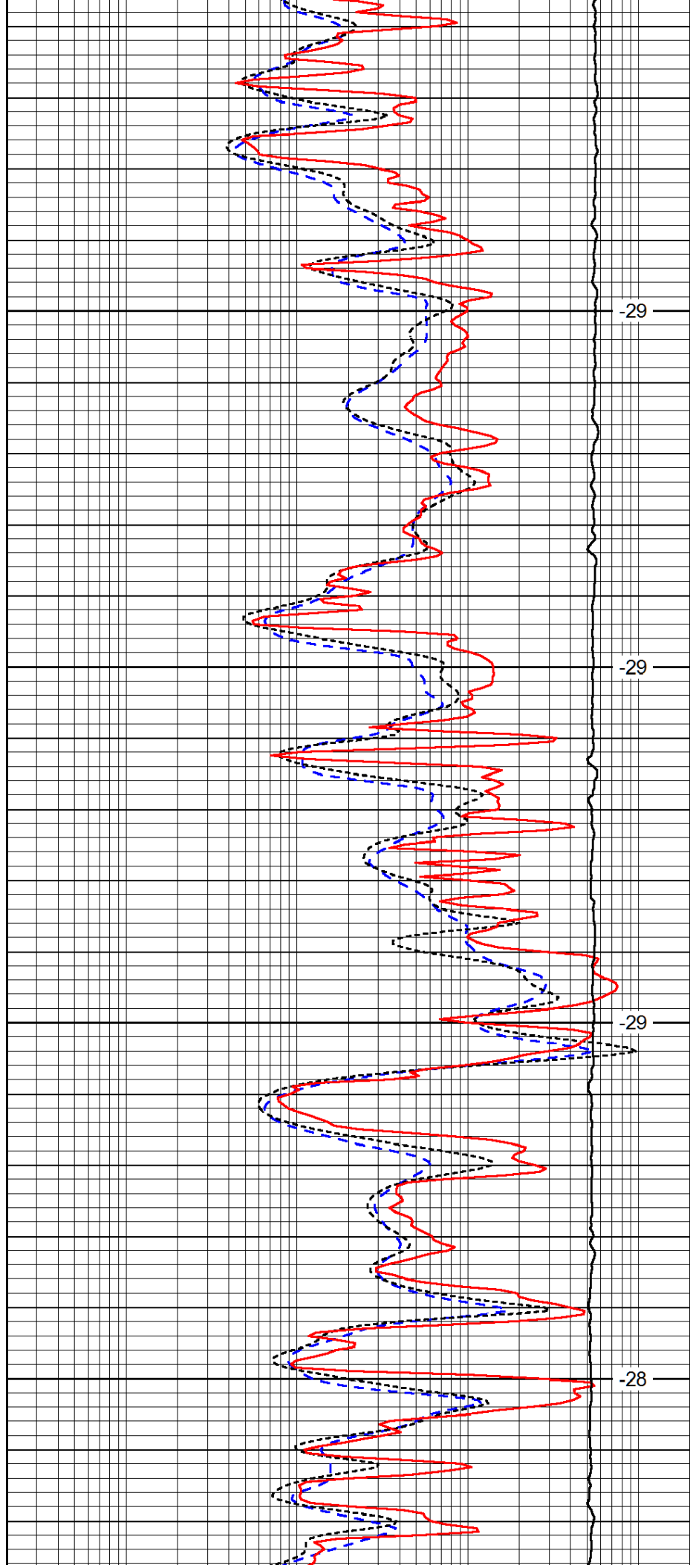


3150

3200

3250

3300

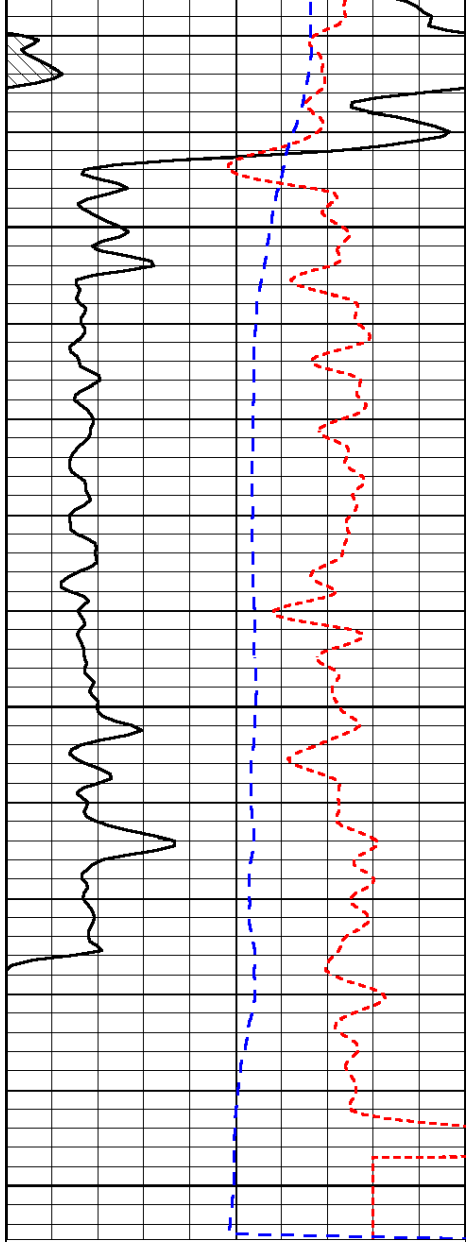


-29

-29

-29

-28

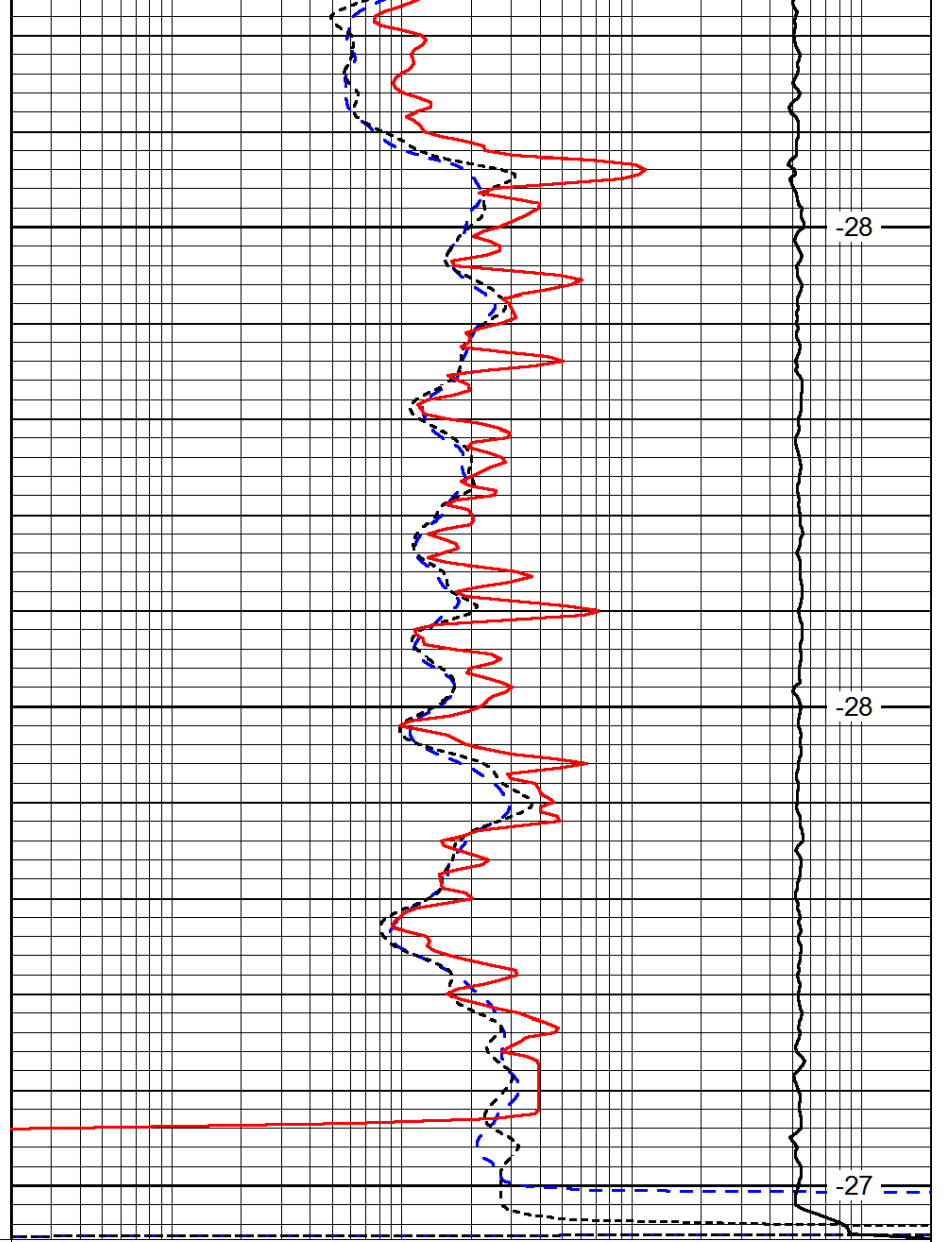


3350

3400

3450

0	Gamma Ray	150
-160	RXO/RT	40
-200	SP (mV)	0



-28

-28

-27

0.2	Deep Resistivity	2000
0.2	Medium Resistivity	2000
0.2	Shallow Resistivity	2000
10000	Line Tension	0

LSPD