



**COMPLETION  
& PRODUCTION  
SERVICES CO.**

**COMPENSATED  
DENSITY / NEUTRON  
PE LOG**

Company	CASTELLI EXPLORATION, INC.	Company	CASTELLI EXPLORATION, INC.
Well	GALLUP RANCH #1-13	Well	GALLUP RANCH #1-13
Field		Field	
County	KIOWA	County	KIOWA
State	KANSAS	State	KANSAS
Location:	API # : 15-097-21800-0000	Other Services	
Permanent Datum	1650' FSL & 1485' FWL	DILMEL	
Log Measured From	W/2 - SW - NE - SW	Elevation	K.B. 1787 D.F. 1785 G.L. 1774
Drilling Measured From	SEC 13 TWP 30S RGE 16W		
	GROUND LEVEL	Elevation	1774
	KELLY BUSHING		
	13' A.G.L.		
	KELLY BUSHING		

Date	8/6/14
Run Number	ONE
Depth Driller	4900
Depth Logger	4903
Bottom Logged Interval	4879
Top Log Interval	3650
Casing Driller	13 3/8" @ 335'
Casing Logger	333'
Bit Size	7.875
Type Fluid in Hole	CHEMICAL MUD
Density / Viscosity	9.3/53
pH / Fluid Loss	11.0/9.2
Source of Sample	FLOWLINE
Rm @ Meas. Temp	0.65 @ 95F
Rmt @ Meas. Temp	0.48 @ 95F
Rmc @ Meas. Temp	0.78 @ 95F
Source of Rmf / Rmc	MEASURED
Rm @ BHT	0.50 @ 124F
Time Circulation Stopped	2 HOURS
Time Logger on Bottom	
Maximum Recorded Temperature	124F
Equipment Number	4010
Location	HAYS, KS.
Recorded By	JEFF GRONWEG
Witnessed By	RICK POPP

<<< Fold Here >>>

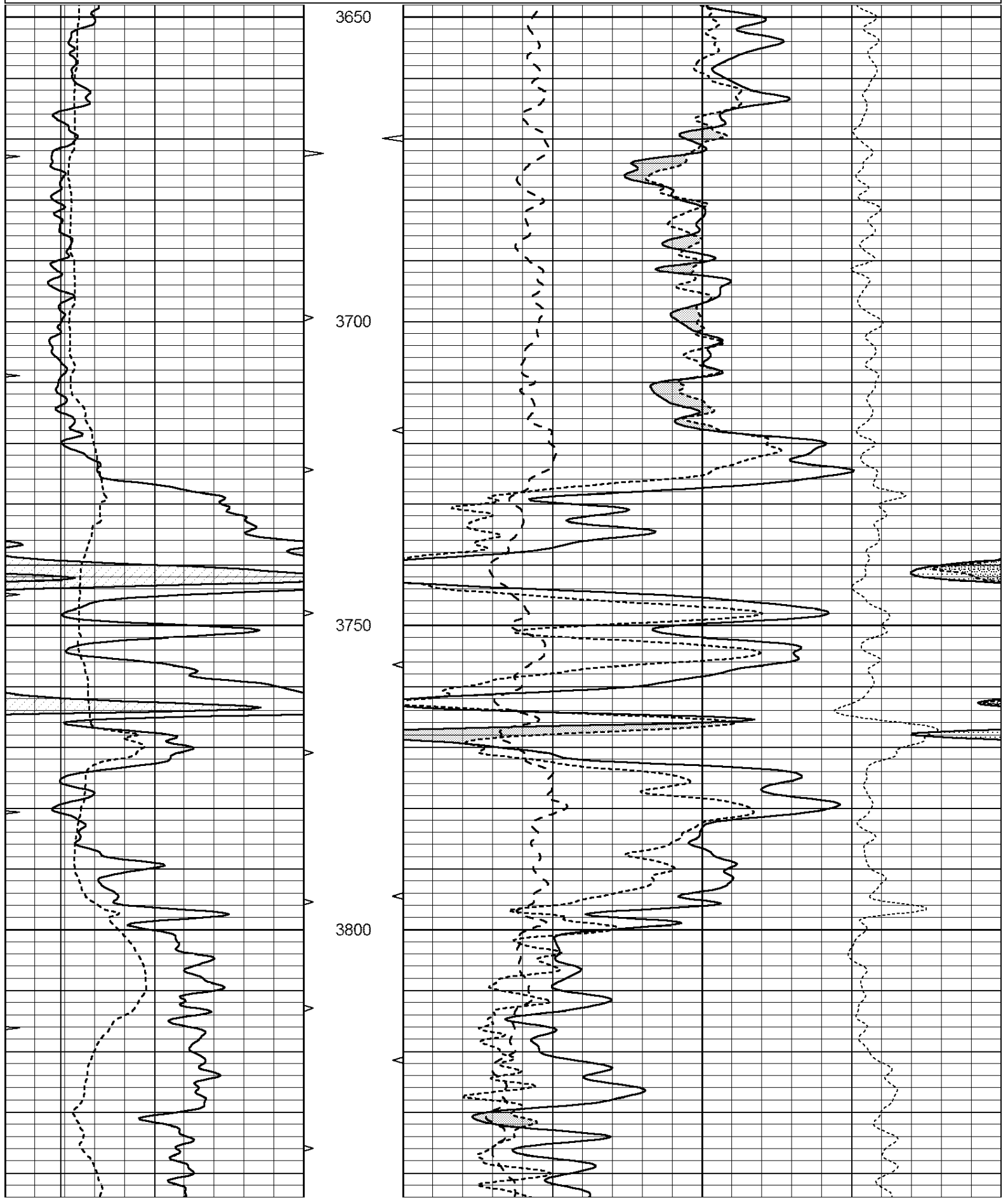
All interpretations are opinions based on inferences from electrical or other measurements and we cannot and do not guarantee the accuracy or correctness of any interpretation, and we shall not, except in the case of gross or willful negligence on our part, be liable or responsible for any loss, costs, damages, or expenses incurred or sustained by anyone resulting from any interpretation made by any of our officers, agents or employees. These interpretations are also subject to our general terms and conditions set out in our current Price Schedule.

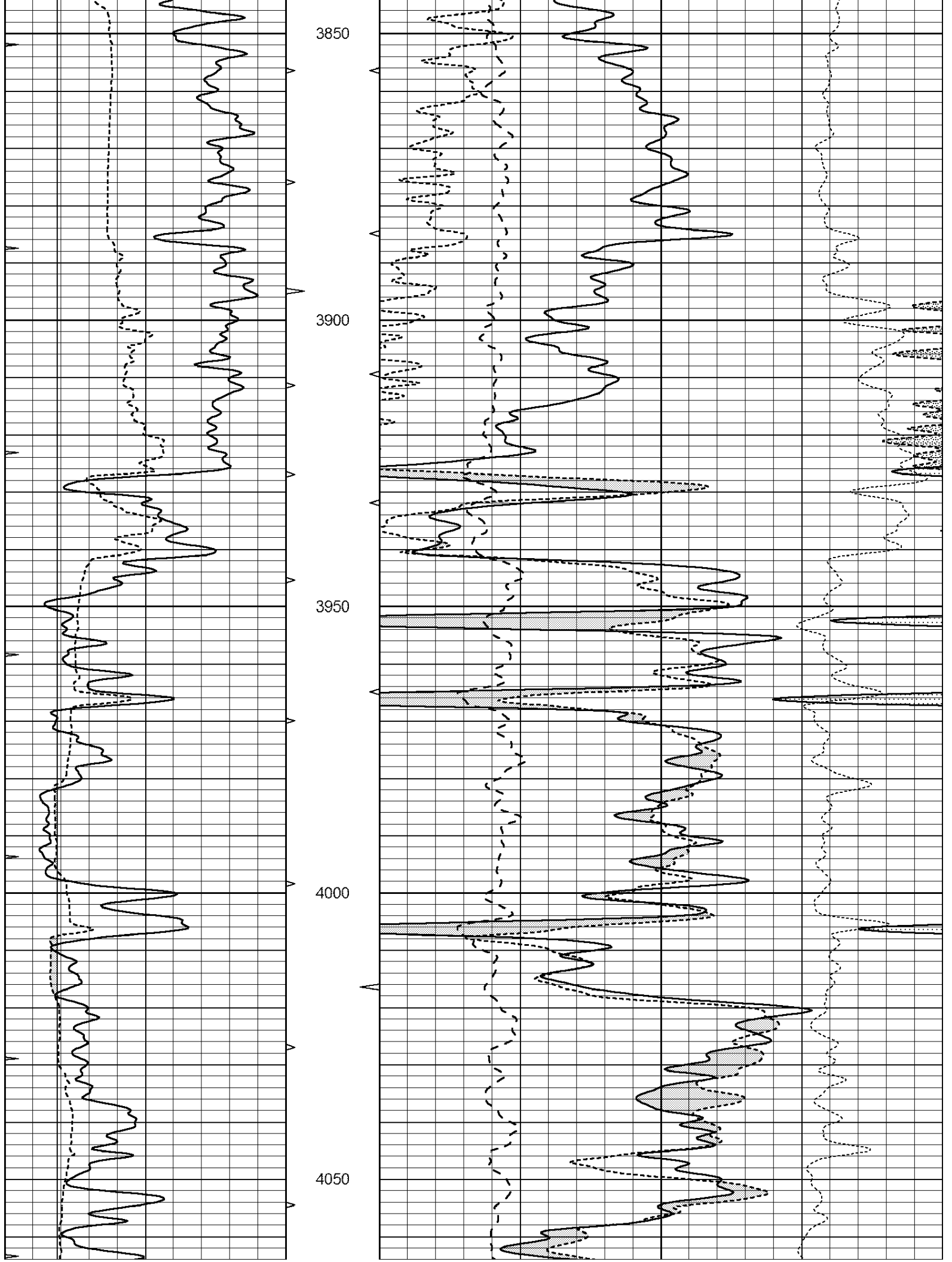
**Comments**

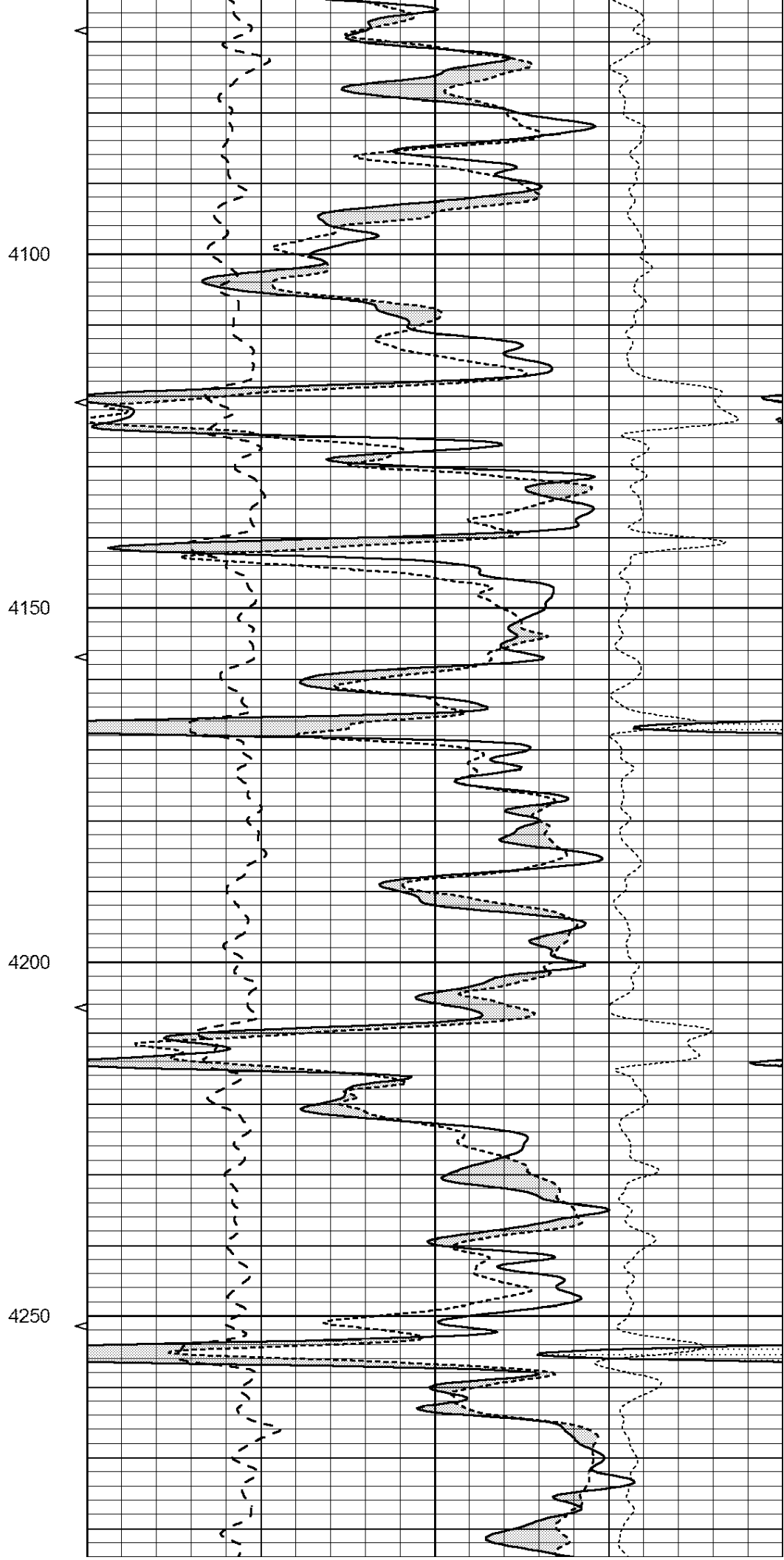
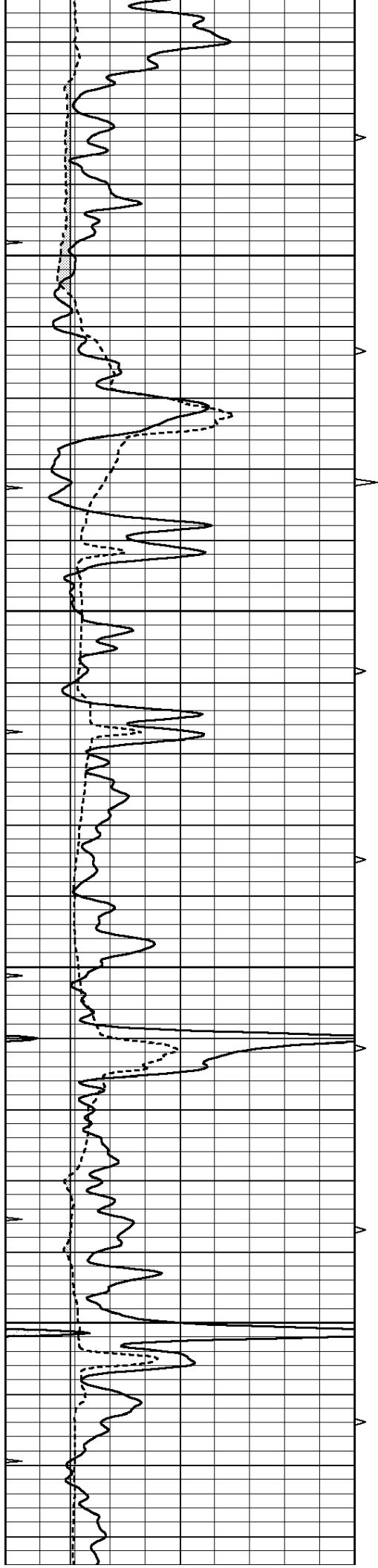
**NABORS COMPLETION & PRODUCTION SERVICES**  
**785-628-6395**  
**THANK YOU FOR YOUR BUSINESS**  
**DIRECTIONS: BELVIDERE, KS - NORTH 2 MILES TO RD 67**  
**3 MILES EAST - SOUTH INTO**

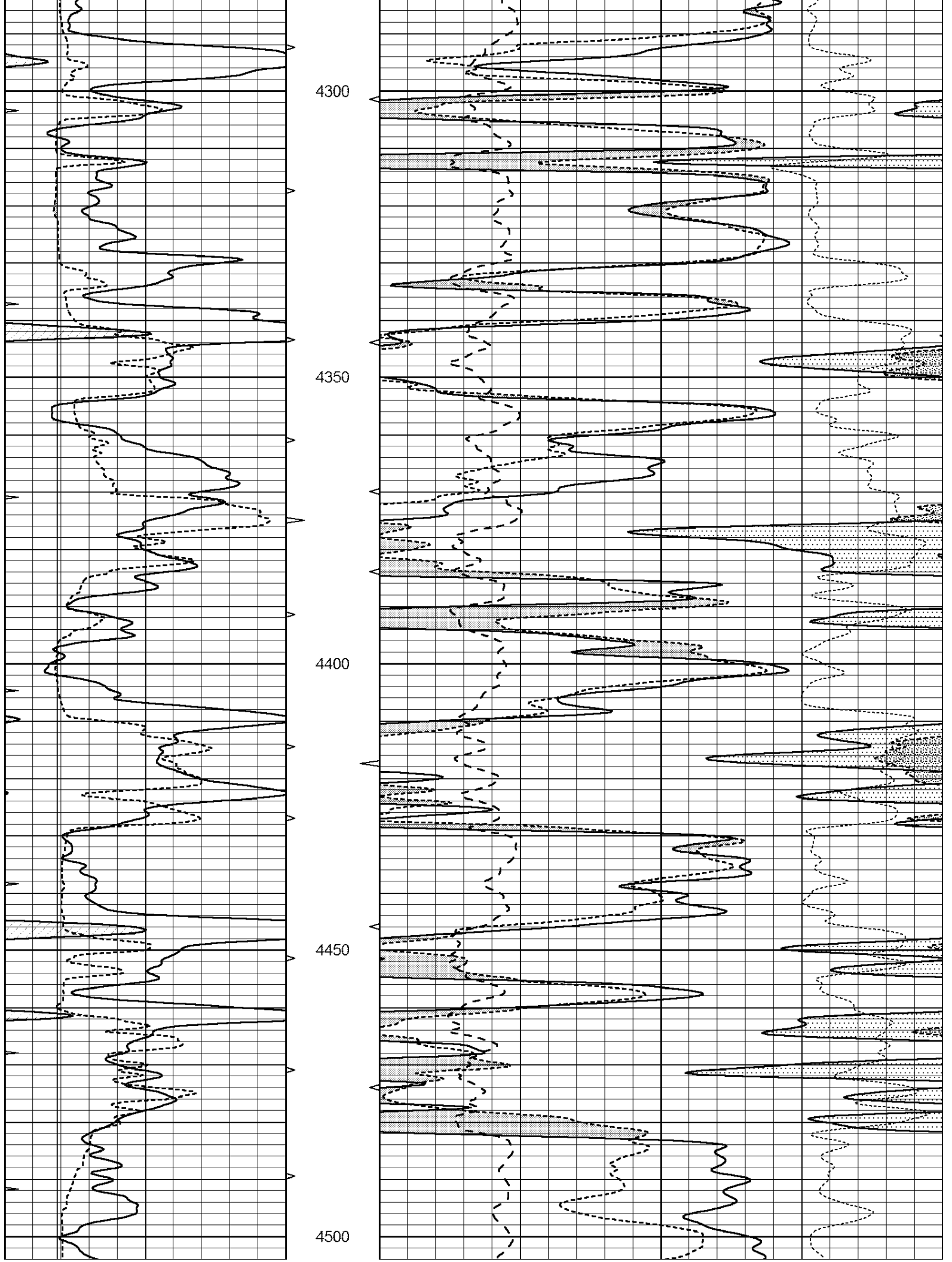
Database File: 080614pe.db  
 Dataset Pathname: pass3.3  
 Presentation Format: \_ldt\_neu  
 Dataset Creation: Wed Aug 06 15:48:32 2014 by Calc Open-Cased 090629  
 Charted by: Depth in Feet scaled 1:240

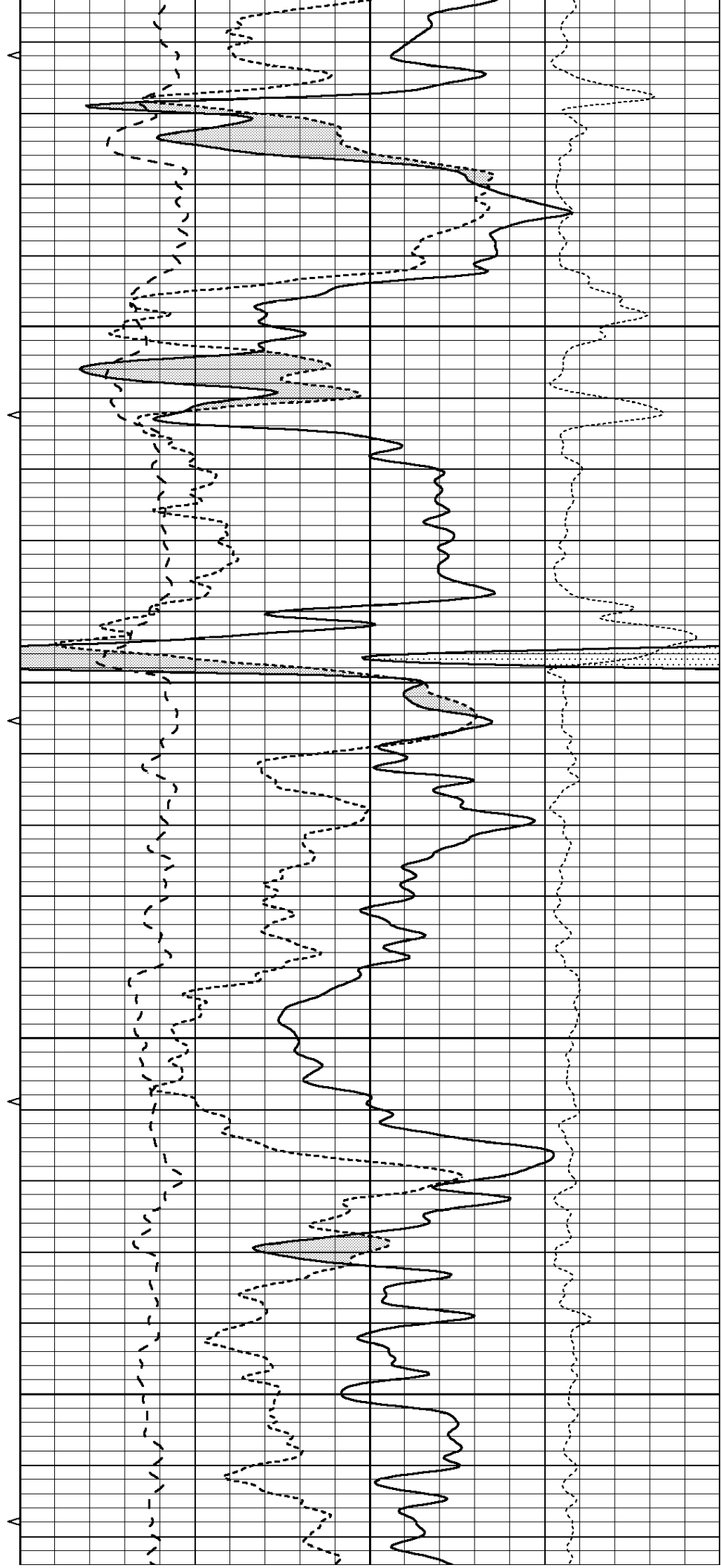
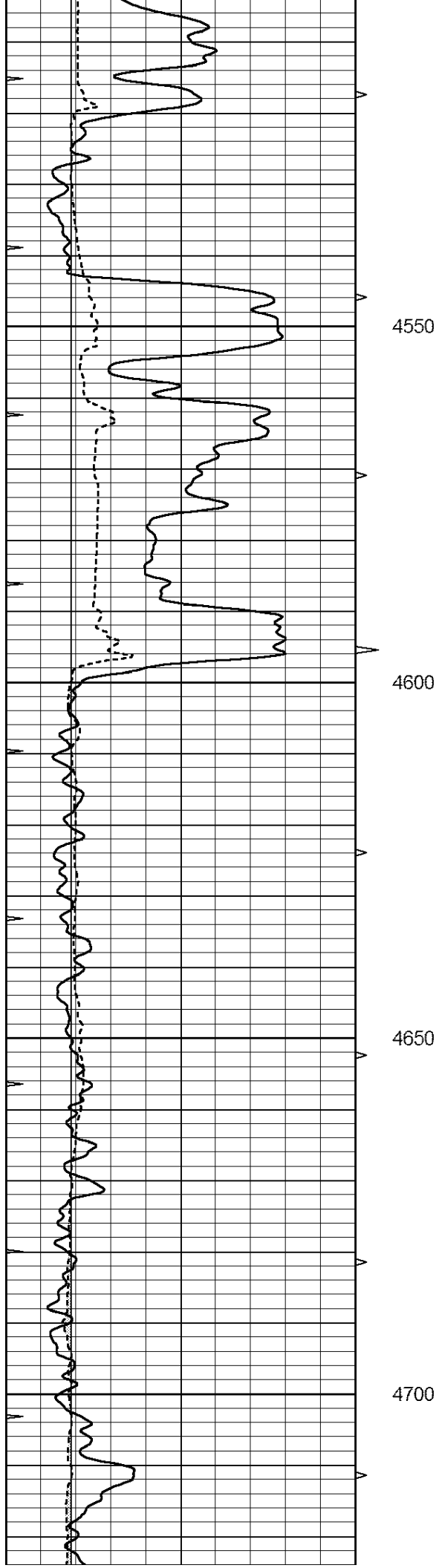
0	GAMMA RAY (GAPI)	150	ABHV	30	COMPENSATED DENSITY (pu)		-10		
6	CALIPER (in)	16	10 (ft3)	0	30	COMPENSATED NEUTRON (pu)		-10	
0	MINMK	20	TBHV	0	PE	10	-0.25	CORRECTION (g/cc)	0.25
			0 (ft3)	10					

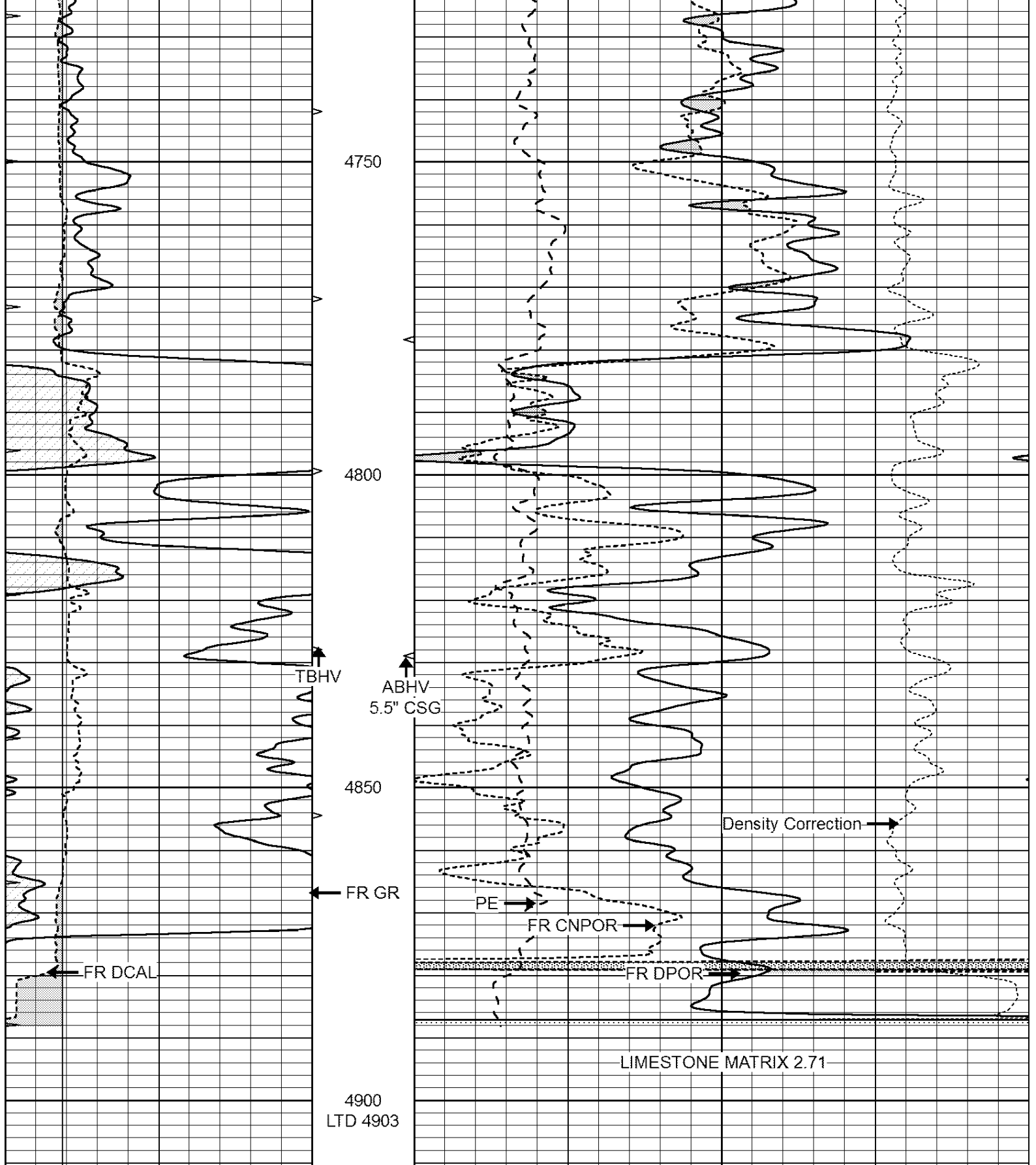








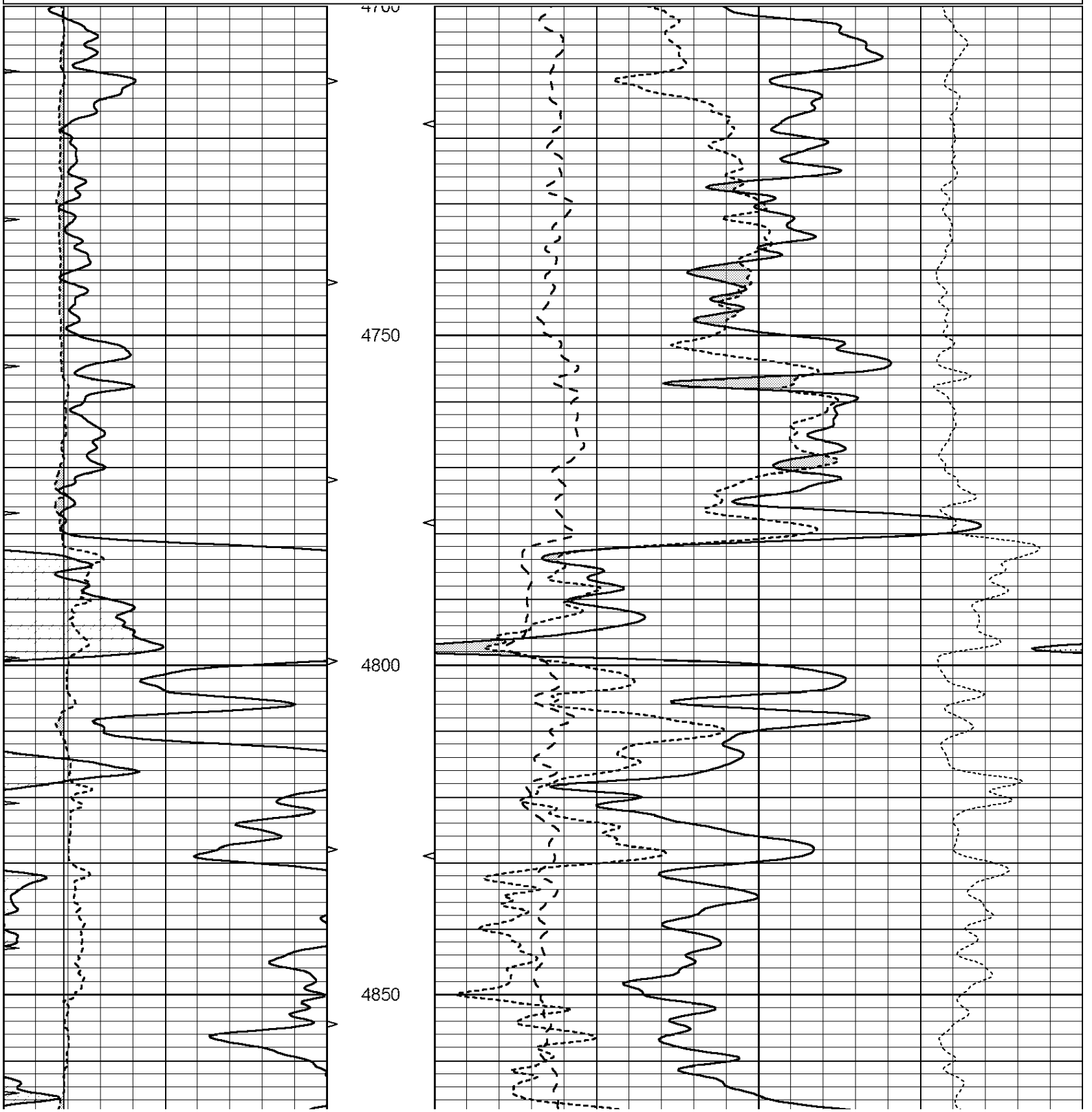


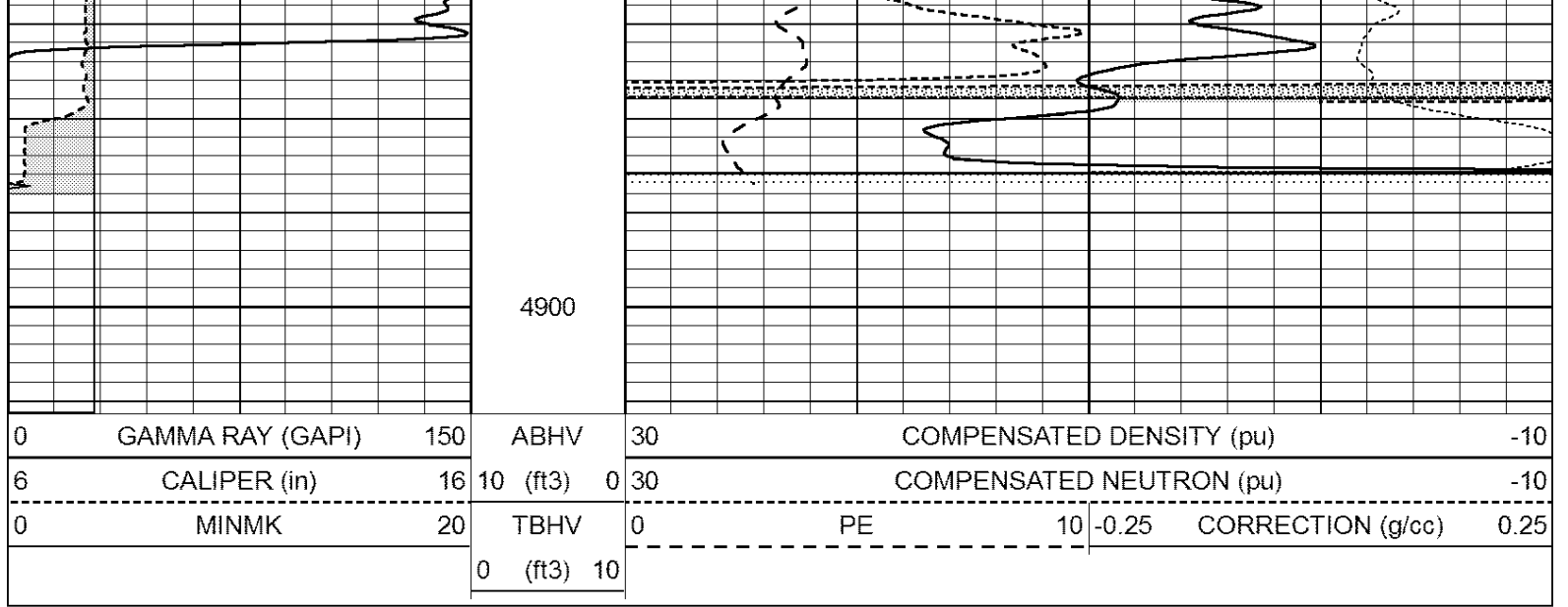


0	GAMMA RAY (GAPI)	150	ABHV	30	COMPENSATED DENSITY (pu)	-10
6	CALIPER (in)	16	10 (ft3)	0	COMPENSATED NEUTRON (pu)	-10
0	MINMK	20	TBHV	0	PE	10 -0.25 CORRECTION (g/cc) 0.25
			0 (ft3)	10		

Database File: 080614pe.db  
 Dataset Pathname: pass2.6  
 Presentation Format: \_ldt\_neu  
 Dataset Creation: Wed Aug 06 16:04:55 2014  
 Charted by: Depth in Feet scaled 1:240

0	GAMMA RAY (GAPI)	150	ABHV	30	COMPENSATED DENSITY (pu)	-10
6	CALIPER (in)	16	10 (ft3)	0	COMPENSATED NEUTRON (pu)	-10
0	MINMK	20	TBHV	0	PE	10 -0.25 CORRECTION (g/cc) 0.25
			0 (ft3)	10		





### Calibration Report

Database File: 080614pe.db  
 Dataset Pathname: pass3.3  
 Dataset Creation: Wed Aug 06 15:48:32 2014 by Calc Open-Cased 090629

### Dual Induction Calibration Report

Serial-Model: PROBE8-DILG  
 Surface Cal Performed: Sun Jul 27 18:19:21 2014  
 Downhole Cal Performed: Mon Jul 28 11:08:27 2008  
 After Survey Verification Performed: Mon Jul 28 11:08:27 2008

#### Surface Calibration

Loop:	Readings			References			Results	
	Air	Loop		Air	Loop		m	b
Deep	0.015	0.648	V	0.000	400.000	mmho/m	630.000	-6.000
Medium	0.029	0.796	V	0.000	464.000	mmho/m	590.000	-16.000
Internal:	Zero	Cal		Zero	Cal		m	b
Deep	0.017	0.657	V	0.000	400.000	mmho/m	625.153	-10.619
Medium	0.016	0.757	V	0.000	464.000	mmho/m	625.992	-9.739

#### Downhole Calibration

	Readings			References			Results	
	Zero	Cal		Zero	Cal		m'	b'
Deep	0.000	0.000	mmho/m	2.011	405.777	mmho/m	1.000	0.000
Medium	0.000	0.000	mmho/m	7.590	503.393	mmho/m	1.000	0.000
LL3		7.500	V		1500.000	Ohm-m		
		0.000	V		20.000	Ohm-m		
		-7.200	V		3800.000	mmho-m		

#### After Survey Verification

	Readings			Targets			Results	
	Zero	Cal		Zero	Cal		m'	b'
Deep	0.000	0.000	mmho/m	0.000	0.000	mmho/m	0.000	0.000
Medium	0.000	0.000	mmho/m	0.000	0.000	mmho/m	0.000	0.000
LL3		1.000	Ohm-m		1.000	Ohm-m		
		0.000	Ohm-m		0.000	Ohm-m		
		1.000	mmho-m		1.000	mmho-m		

Master Calibration

Performed Thu Sep 17 09:57:21 2009

	Background	Magnesium	Aluminum	Sandstone	
Window 1	2056.0	9796.8	3673.1	10821.3	cps
Window 2	1920.0	8541.1	3303.5	9307.2	cps
Window 3	1563.1	4735.7	2212.8	5017.5	cps
Window 4	466.0	466.1	465.6	471.5	cps
Long Space	0.0	6621.1	1383.5	7387.2	cps
Short Space	2.5	2361.7	1523.2	2534.0	cps
Rho		1.7100	2.5900	1.3800	g/cc
Pe		0.0000	2.5700	1.5500	
Rib Angle	: 44.4	Rib Slope	: 0.978	Density/Spine Ratio	: 0.541
Spine Angle	: 74.4	Spine Slope	: 3.570	Spine Intercept	: -18.9

Before Survey Verification

Performed Wed Dec 31 18:00:00 1969

Window 1	0.0	0.0	0.0	0.0	cps
Window 2	0.0	0.0	0.0	0.0	cps
Window 3	0.0	0.0	0.0	0.0	cps
Window 4	0.0	0.0	0.0	0.0	cps
Long Space	0.0	0.0	0.0	0.0	cps
Short Space	0.0	0.0	0.0	0.0	cps
Measured Rho		0.0000	0.0000	0.0000	g/cc
Measured Correction		0.0000	0.0000	0.0000	g/cc
Measured Pe			0.0000	0.0000	

After Survey Verification

Performed Wed Dec 31 18:00:00 1969

Window 1	0.0	0.0	0.0	0.0	cps
Window 2	0.0	0.0	0.0	0.0	cps
Window 3	0.0	0.0	0.0	0.0	cps
Window 4	0.0	0.0	0.0	0.0	cps
Long Space	0.0	0.0	0.0	0.0	cps
Short Space	0.0	0.0	0.0	0.0	cps
Measured Rho		0.0000	0.0000	0.0000	g/cc
Measured Correction		0.0000	0.0000	0.0000	g/cc
Measured Pe			0.0000	0.0000	

Compensated Neutron Calibration Report

Serial Number: 61  
 Tool Model: G

CALIBRATION

Detector	Readings	Target	Normalization
Short Space	1.00 cps	1.00 cps	1.0000
Long Space	1.00 cps	1.00 cps	1.0000

PRE-SURVEY VERIFICATION

Detector	Readings	Measured	Target
1) Short Space	cps		
Long Space	cps	pu	pu

2)	Short Space Long Space	cps cps	pu
3)	Short Space Long Space	cps cps	pu

POST-SURVEY VERIFICATION				
	Detector	Readings	Measured	Target
1)	Short Space Long Space	cps cps	pu	pu
2)	Short Space Long Space	cps cps	pu	pu
3)	Short Space Long Space	cps cps	pu	pu

Gamma Ray Calibration Report

Serial Number:	GR6	
Tool Model:	OPEN	
Performed:	Sun Jul 27 22:13:15 2014	
Calibrator Value:	150.0	GAPI
Background Reading:	0.0	cps
Calibrator Reading:	276.0	cps
Sensitivity:	0.7500	GAPI/cps