



**COMPLETION
& PRODUCTION
SERVICES CO.**

**MICRO
LOG**

Company	CASTELLI EXPLORATION, INC.	Company	CASTELLI EXPLORATION, INC.
Well	GALLUP RANCH #1-13	Well	GALLUP RANCH #1-13
Field		Field	
County	KIOWA	County	KIOWA
State	KANSAS	State	KANSAS
Location:	API # : 15-097-21800-0000	Other Services	CDL/CNL PE/DIL
Permanent Datum	SEC 13 TWP 30S RGE 16W	Elevation	K.B. 1787 D.F. 1785 G.L. 1774
Log Measured From	GROUND LEVEL	Elevation	1774
Drilling Measured From	1650' FSL & 1485' FWL W/2 - SW - NE - SW KELLY BUSHING 13' A.G.L. KELLY BUSHING		

Date	8/6/14
Run Number	TWO
Depth Driller	4900
Depth Logger	4903
Bottom Logged Interval	4901
Top Log Interval	3650
Casing Driller	13 3/8" @ 335'
Casing Logger	333'
Bit Size	7.875
Type Fluid in Hole	CHEMICAL MUD
Density / Viscosity	9.3/53
pH / Fluid Loss	11.0/9.2
Source of Sample	FLOWLINE
Rm @ Meas. Temp	0.65 @ 95F
Rmt @ Meas. Temp	0.48 @ 95F
Rmc @ Meas. Temp	0.78 @ 95F
Source of Rmf / Rmc	MEASURED
Rm @ BHT	0.50 @ 124F
Time Circulation Stopped	2 HOURS
Time Logger on Bottom	
Maximum Recorded Temperature	124F
Equipment Number	4010
Location	HAYS, KS.
Recorded By	JEFF GRONIEWEG
Witnessed By	RICK POPP

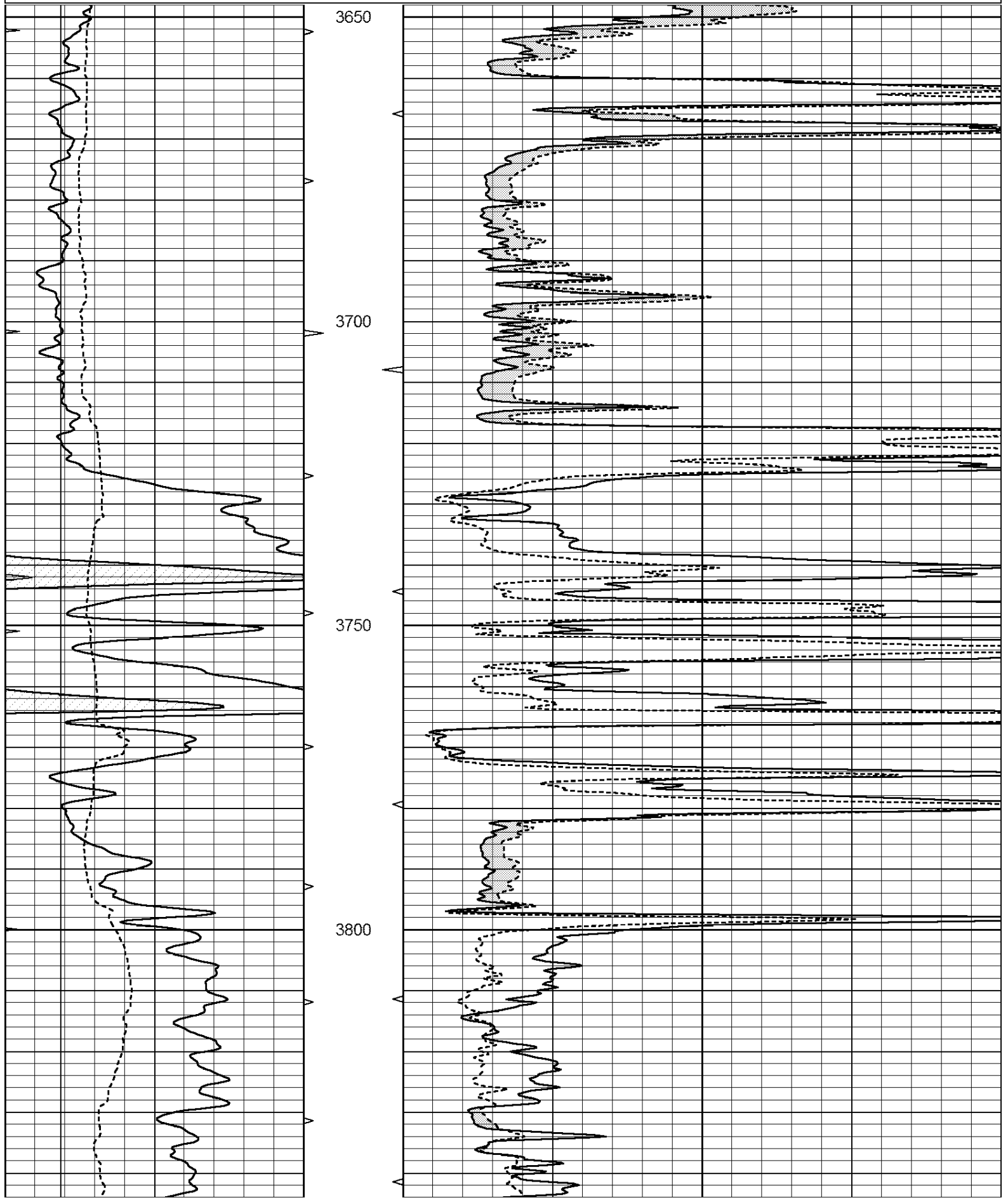
<<< Fold Here >>>

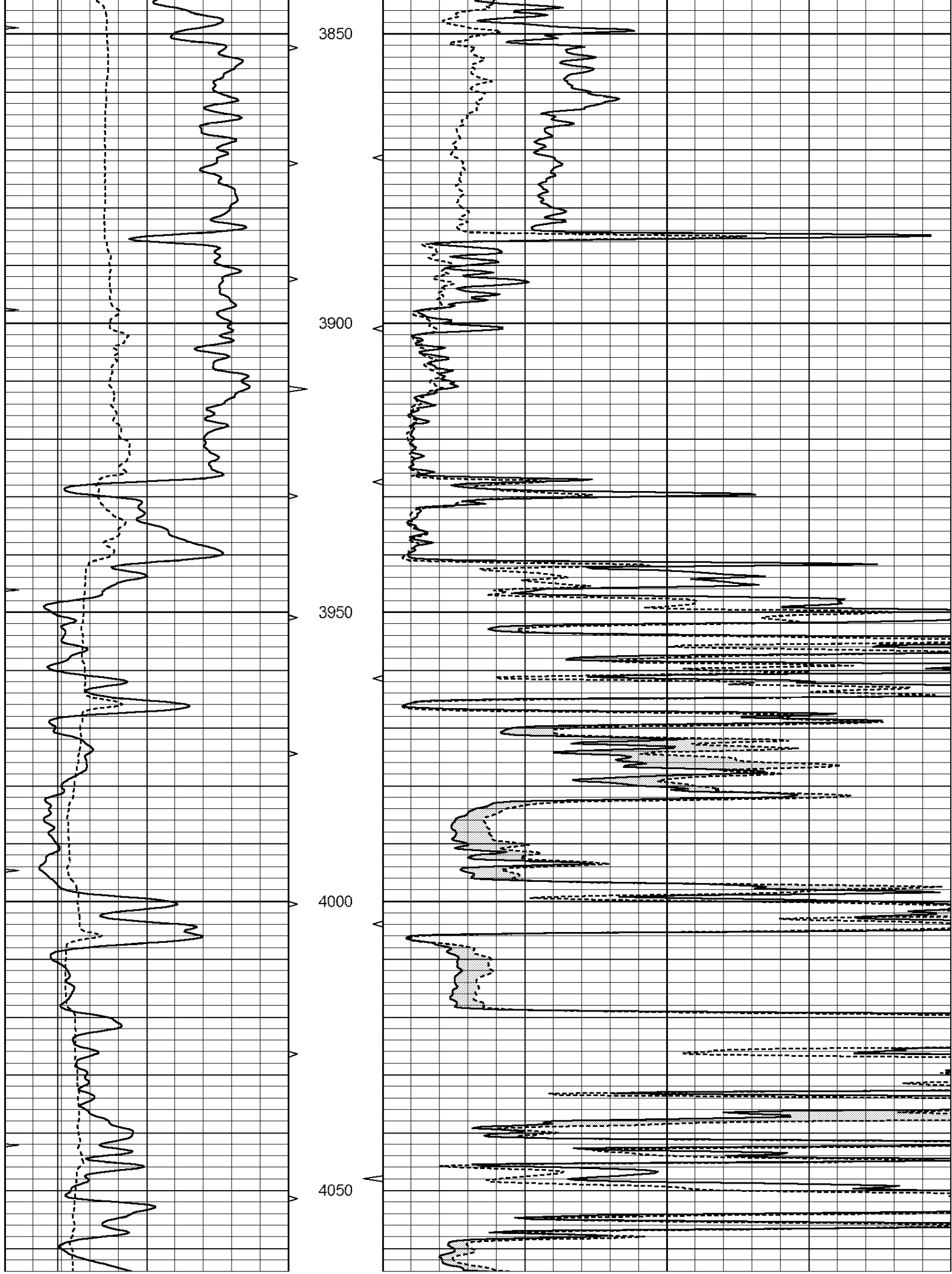
All interpretations are opinions based on inferences from electrical or other measurements and we cannot and do not guarantee the accuracy or correctness of any interpretation, and we shall not, except in the case of gross or willful negligence on our part, be liable or responsible for any loss, costs, damages, or expenses incurred or sustained by anyone resulting from any interpretation made by any of our officers, agents or employees. These interpretations are also subject to our general terms and conditions set out in our current Price Schedule.

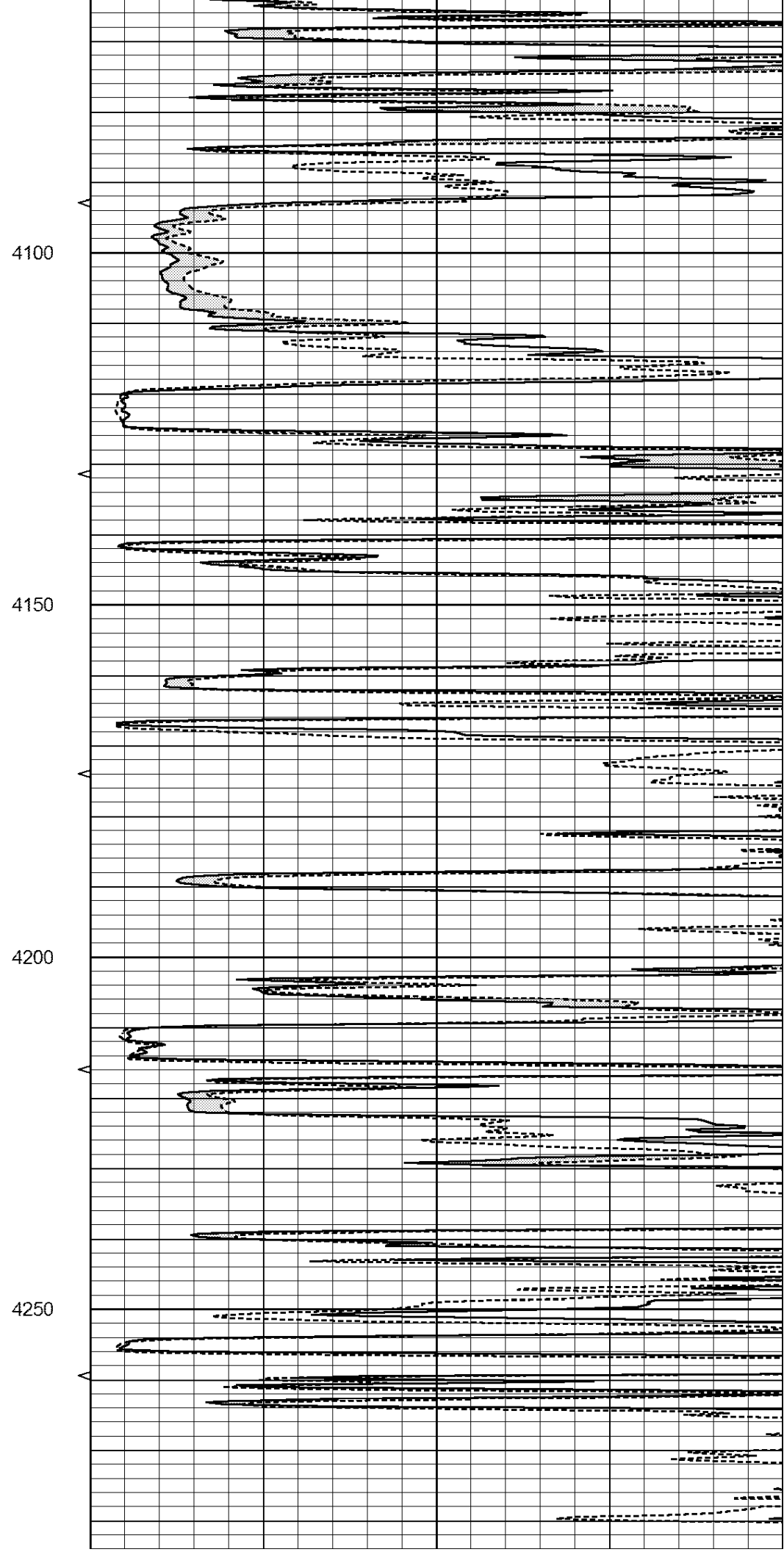
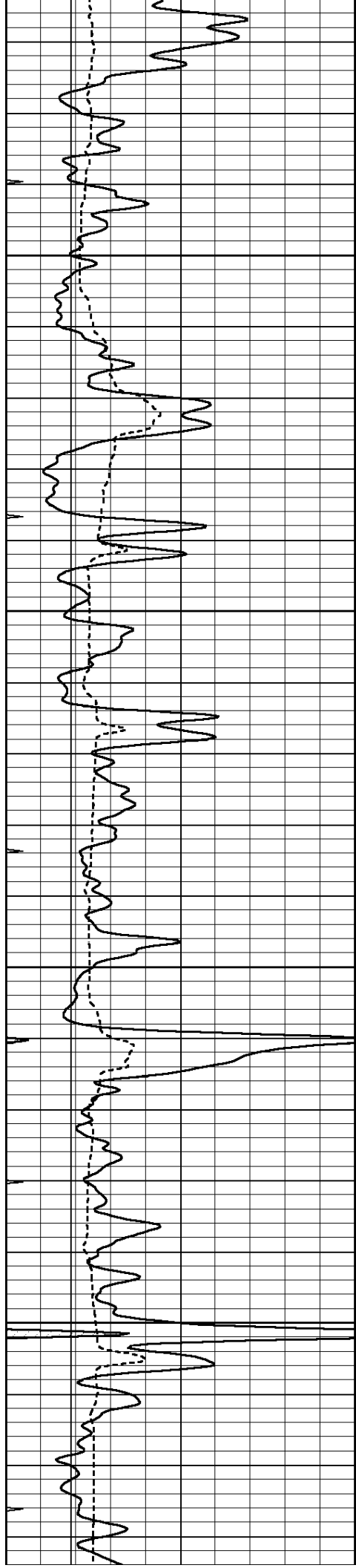
Comments

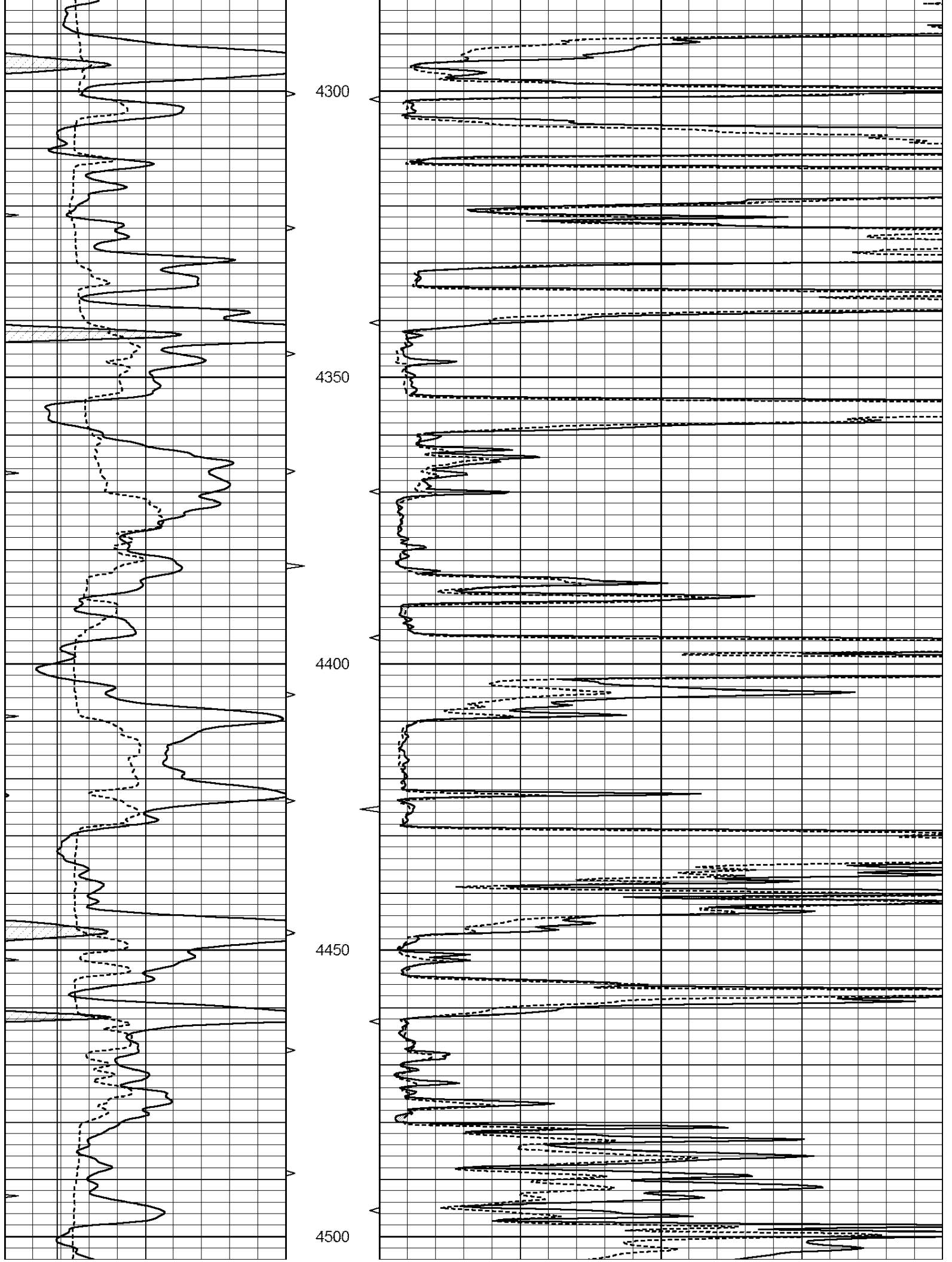
NABORS COMPLETION & PRODUCTION SERVICES
785-628-6395
THANK YOU FOR YOUR BUSINESS
DIRECTIONS: BELVIDERE, KS - NORTH 2 MILES TO RD 67
3 MILES EAST - SOUTH INTO

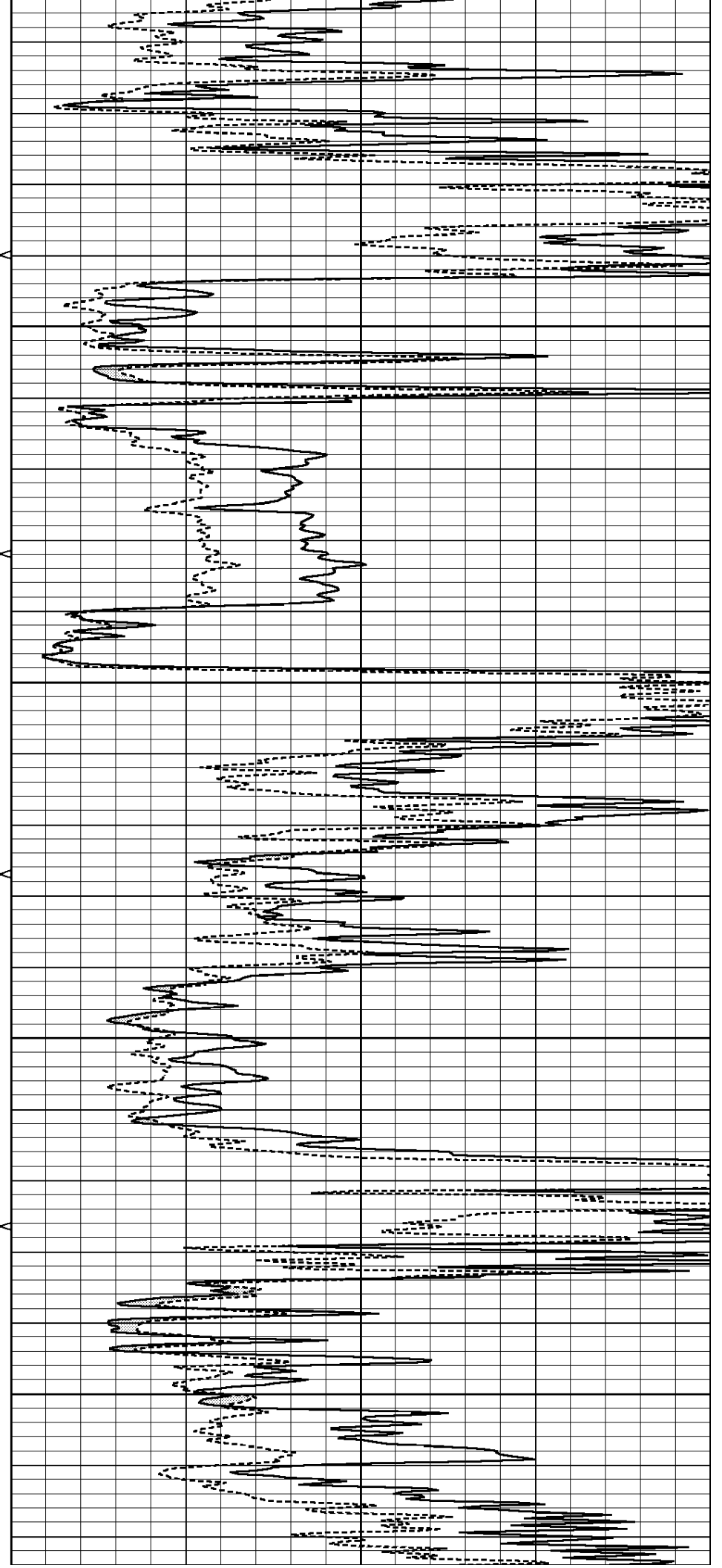
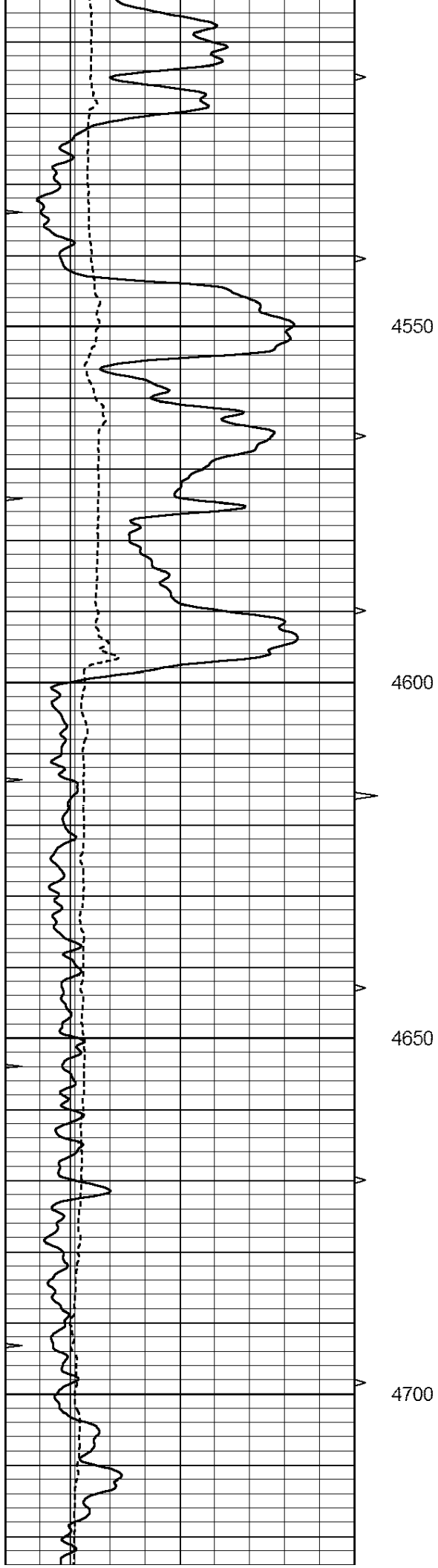
0	GAMMA RAY (GAPI)	150	ABHV	0	MEL1.5 (Ohm-m)	40
6	CALIPER (in)	16	10 (ft3)	0	MEL2.0 (Ohm-m)	40
0	MINMK	20	TBHV			
			0 (ft3)	10		

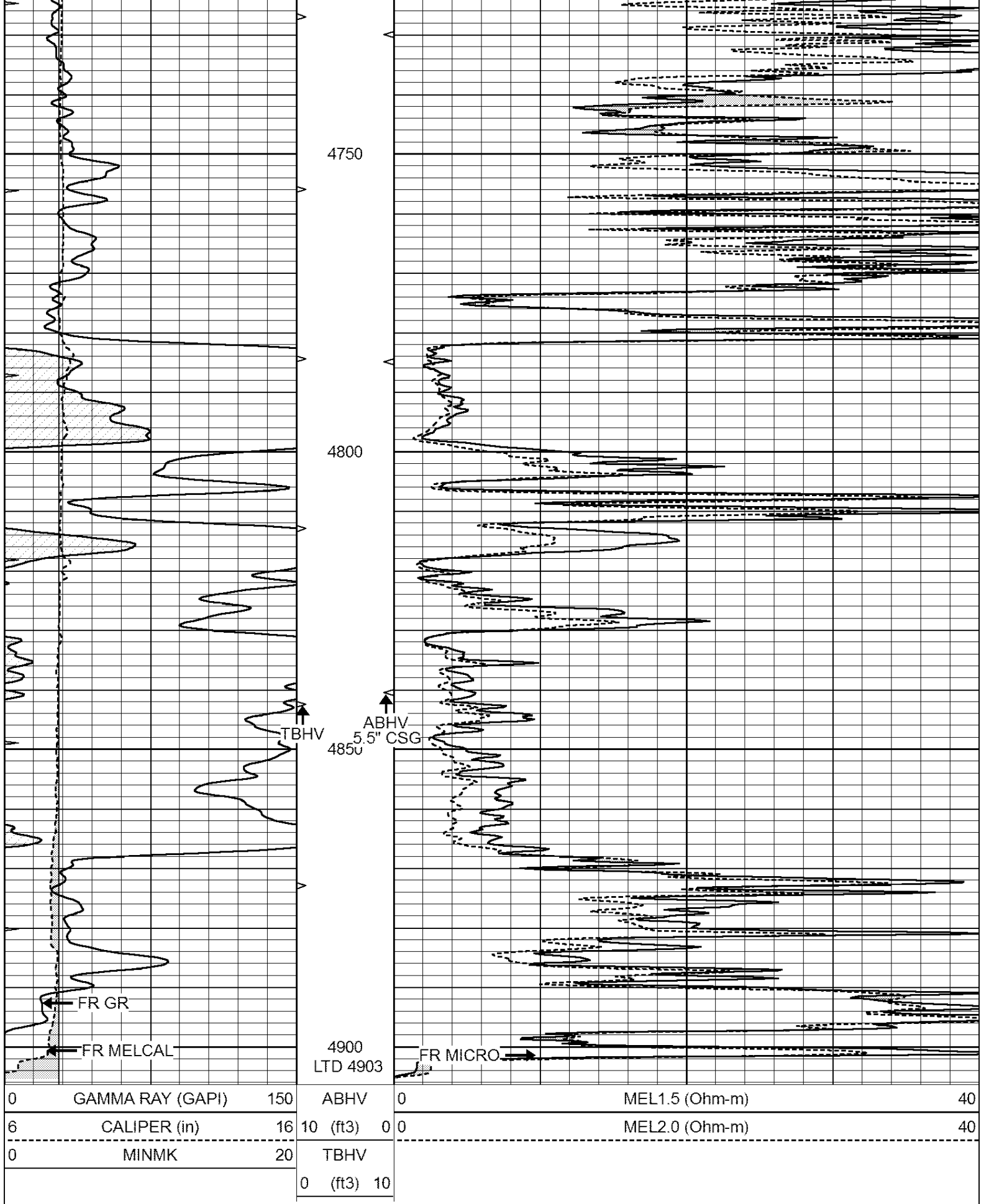






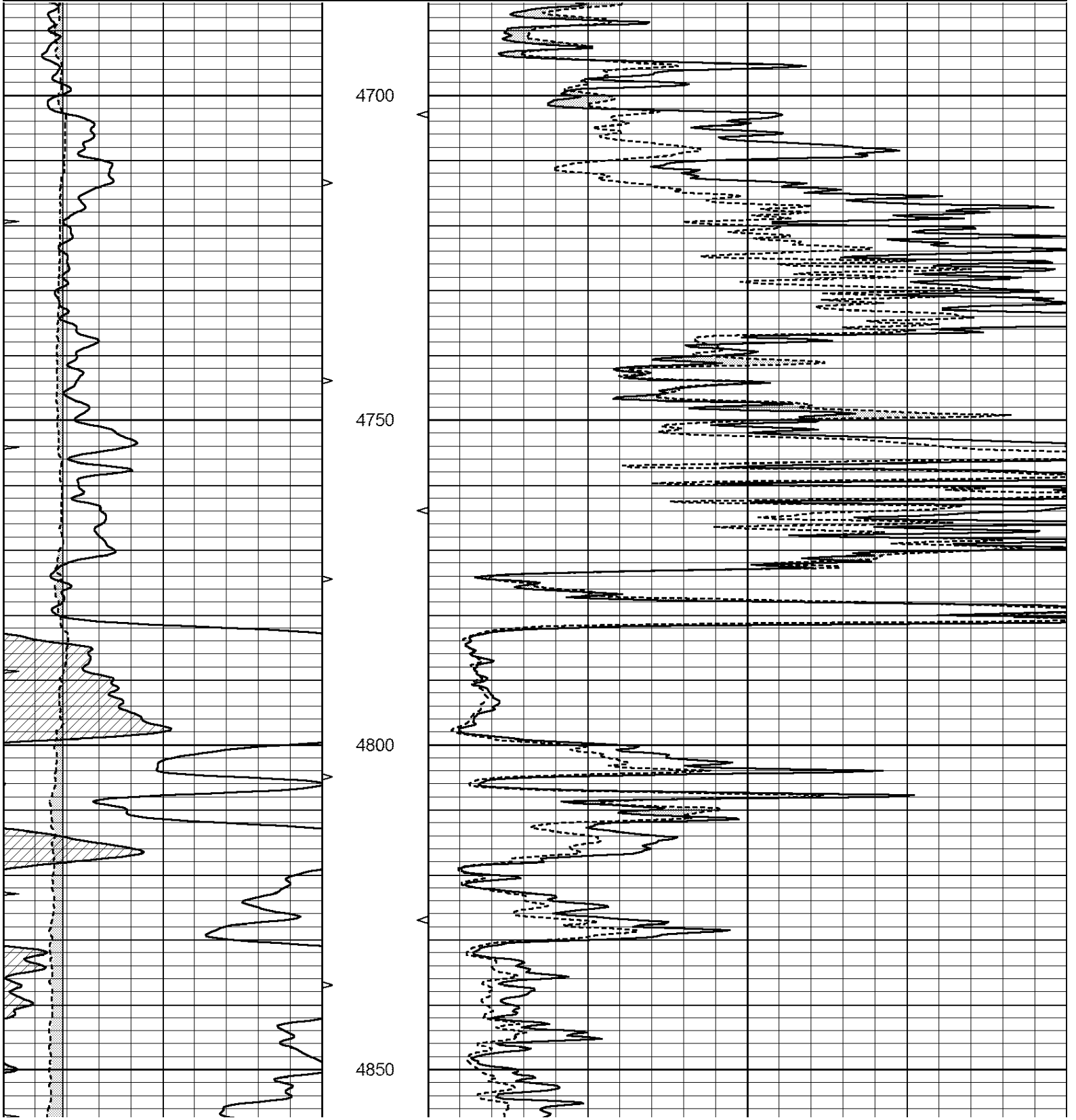


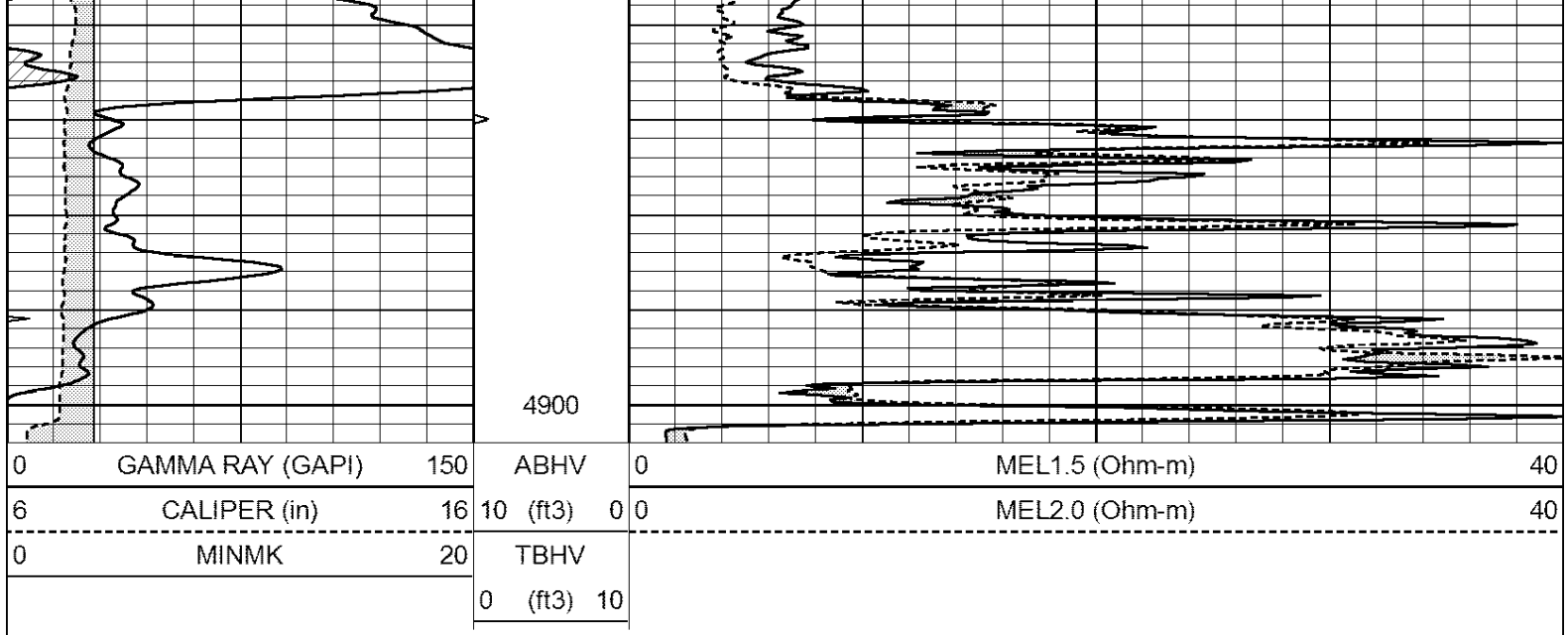




Database File: 080614pe.db
 Dataset Pathname: pass4
 Presentation Format: _micro
 Dataset Creation: Wed Aug 06 16:54:34 2014 by Log Open-Cased 090629
 Charted by: Depth in Feet scaled 1:240

0	GAMMA RAY (GAPI)	150	ABHV	0	MEL1.5 (Ohm-m)	40
6	CALIPER (in)	16	10 (ft3)	0 0	MEL2.0 (Ohm-m)	40
0	MINMK	20	TBHV			
			0 (ft3) 10			





Calibration Report

Database File: 080614pe.db
 Dataset Pathname: pass5.1
 Dataset Creation: Wed Aug 06 17:39:00 2014 by Calc Open-Cased 090629

MICRO Calibration Report

Serial Number:	MICRO6	
Tool Model:	PROBE	
Performed:	Tue Jul 29 01:31:52 2014	
Caliper Calibration:	Gain=5.542	Offset=0.700
References	Low Cal	High Cal
Readings	8.000	14.000
	1.431	2.513
1.5" Calibration:	Gain=38.075	Offset=0.000
References	Low Cal	High Cal
Readings	0.000	20.000
	0.004	1.196
2" Calibration:	Gain=46.000	Offset=-0.300
References	Low Cal	High Cal
Readings	0.000	20.000
	0.006	0.913

Gamma Ray Calibration Report

Serial Number:	GR6	
Tool Model:	OPEN	
Performed:	Sun Jul 27 22:13:15 2014	
Calibrator Value:	150.0	GAPI
Background Reading:	0.0	cps
Calibrator Reading:	276.0	cps
Sensitivity:	0.7500	GAPI/cps