



Pioneer Energy Services

Radiation Guard Log

15-163-24230-00-00

Company McCoy Petroleum Corporation
Well Farr Trust "A" # 2-12
Field Wildcat
County Rooks **State** Kansas
Location 660' FSL & 2310' FWL
Sec: 12 **Twp:** 7 S **Rge:** 19 W

Other Services
 None
 Elevation
 K.B. 1933
 D.F. G.L. 1928

Permanent Datum	Ground Level	Elevation 1928
Log Measured From	Kelly Bushing	5 Ft. Above Perm. Datum
Drilling Measured From	Kelly Bushing	
Date		07-16-2014
Run Number	One	
Depth Driller	3500	
Depth Logger	3501	
Bottom Logged Interval	3500	
Top Log Interval	200	
Casing Driller	8.625 @ 219	
Casing Logger	220	
Bit Size	7.875	
Type Fluid in Hole	Chemical	
Salinity,ppm CL	1700	
Density / Viscosity	9.1	59
pH / Fluid Loss	10.5	7.2
Source of Sample	Flowline	
Rm @ Meas. Temp	1.30 @ 72	
Rmf @ Meas. Temp	0.98 @ 72	
Rmc @ Meas. Temp	1.76 @ 72	
Source of Rmf / Rmc	Charts	
Rm @ BHT	0.84 @ 111	
Operating Rig Time	2 1/2 Hours	
Max Rec. Temp. F	111	
Equipment Number	17	
Location	Hays	
Recorded By	Y. Ruiz	
Witnessed By	Dave Williams	

<<< Fold Here >>>

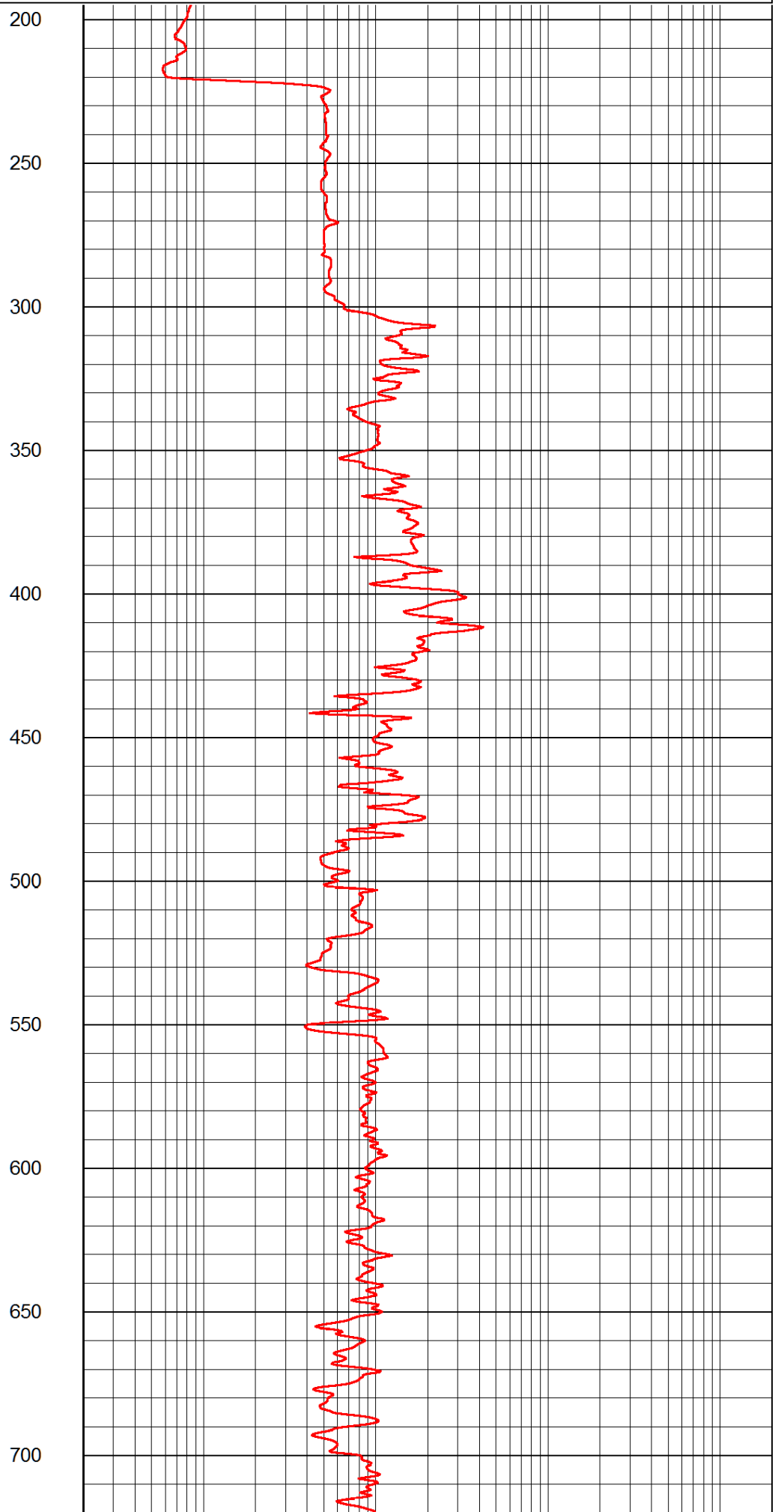
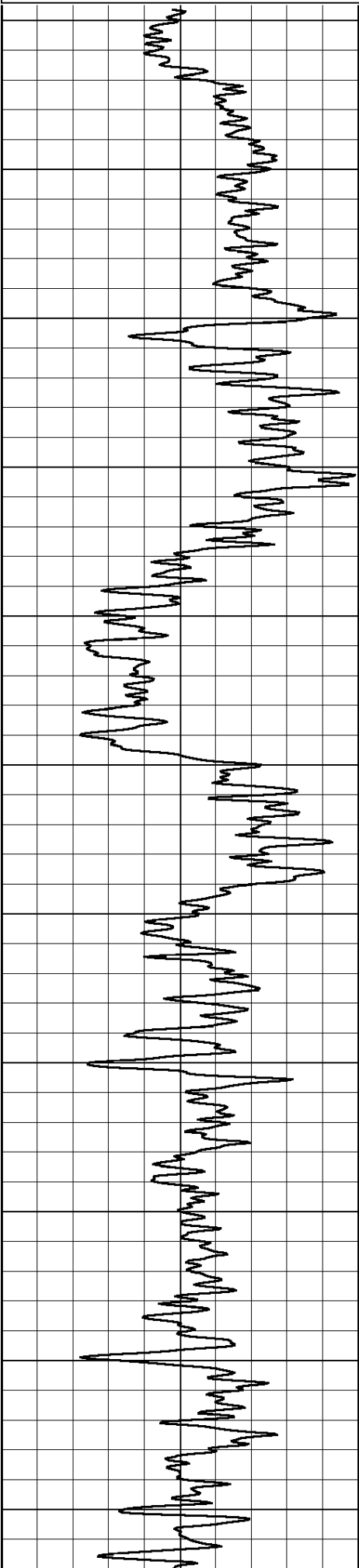
All interpretations are opinions based on inferences from electrical or other measurements and we cannot and do not guarantee the accuracy or correctness of any interpretation, and we shall not, except in the case of gross or willful negligence on our part, be liable or responsible for any loss, costs, damages, or expenses incurred or sustained by anyone resulting from any interpretation made by any of our officers, agents or employees. These interpretations are also subject to our general terms and conditions set out in our current Price Schedule.

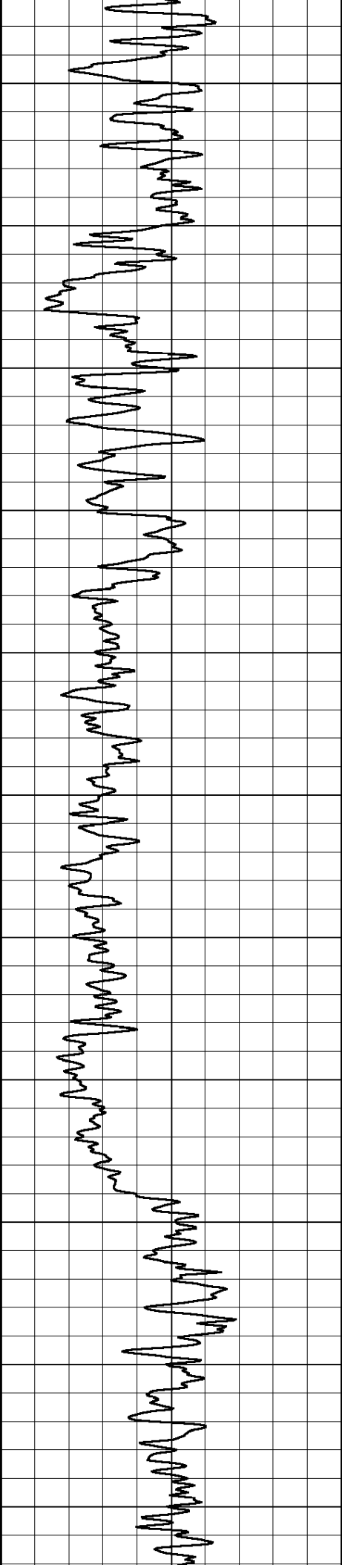
Comments

Thank you for using Log-Tech, Inc.
 (785) 625-3858

 Stockton,
 West to 12 Rd, 2 North,
 East into

Database File: mccoys_farr_trust_a_2_12_hd.db
 Dataset Pathname: Rag/mcrag
 Presentation Format: rag2in
 Dataset Creation: Wed Jul 16 02:49:37 2014
 Charted by: Depth in Feet scaled 1:600





750

800

850

900

950

1000

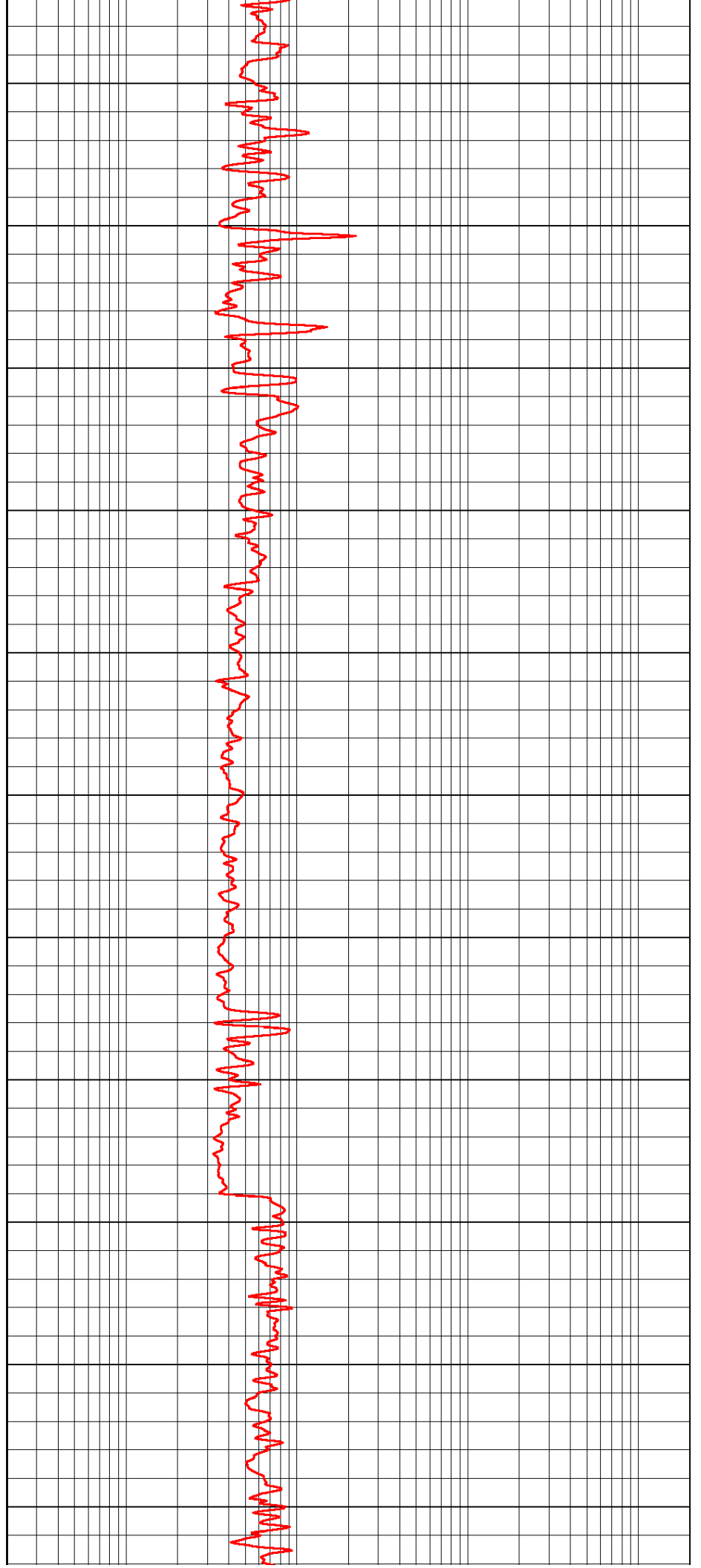
1050

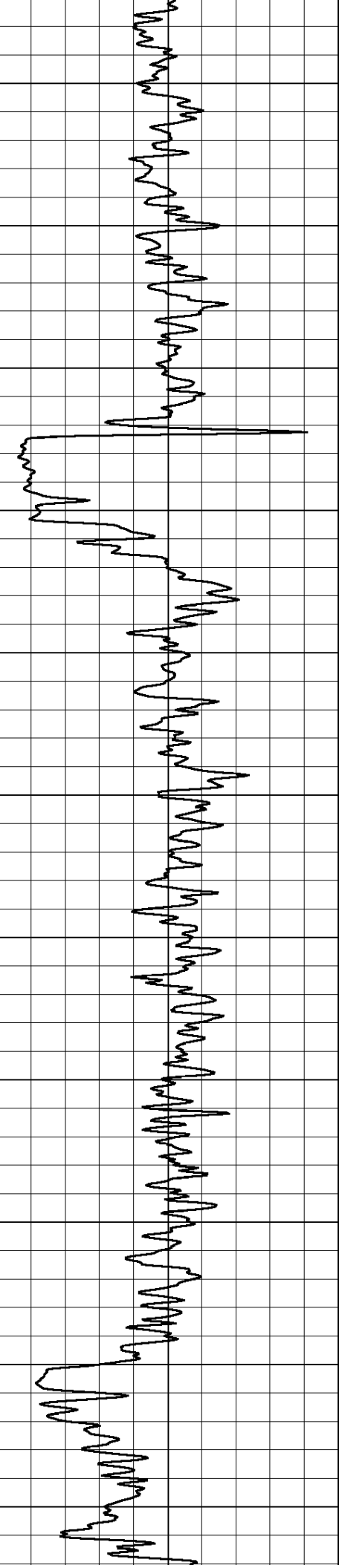
1100

1150

1200

1250





1300

1350

1400

1450

1500

1550

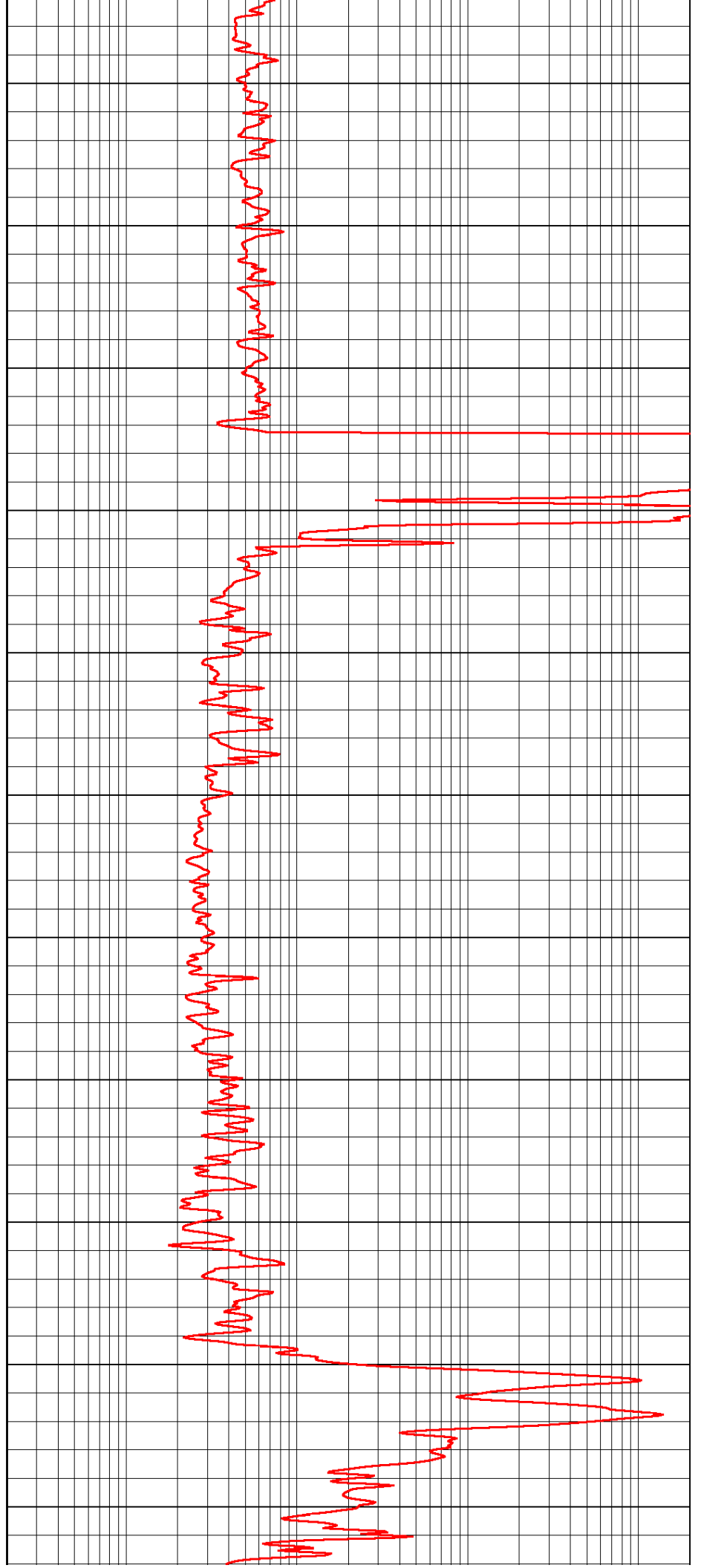
1600

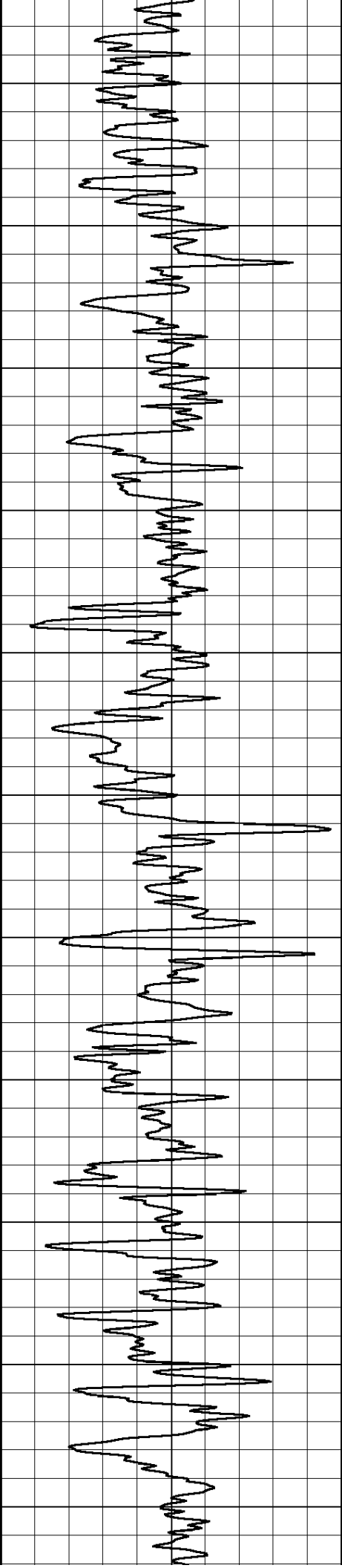
1650

1700

1750

1800





1850

1900

1950

2000

2050

2100

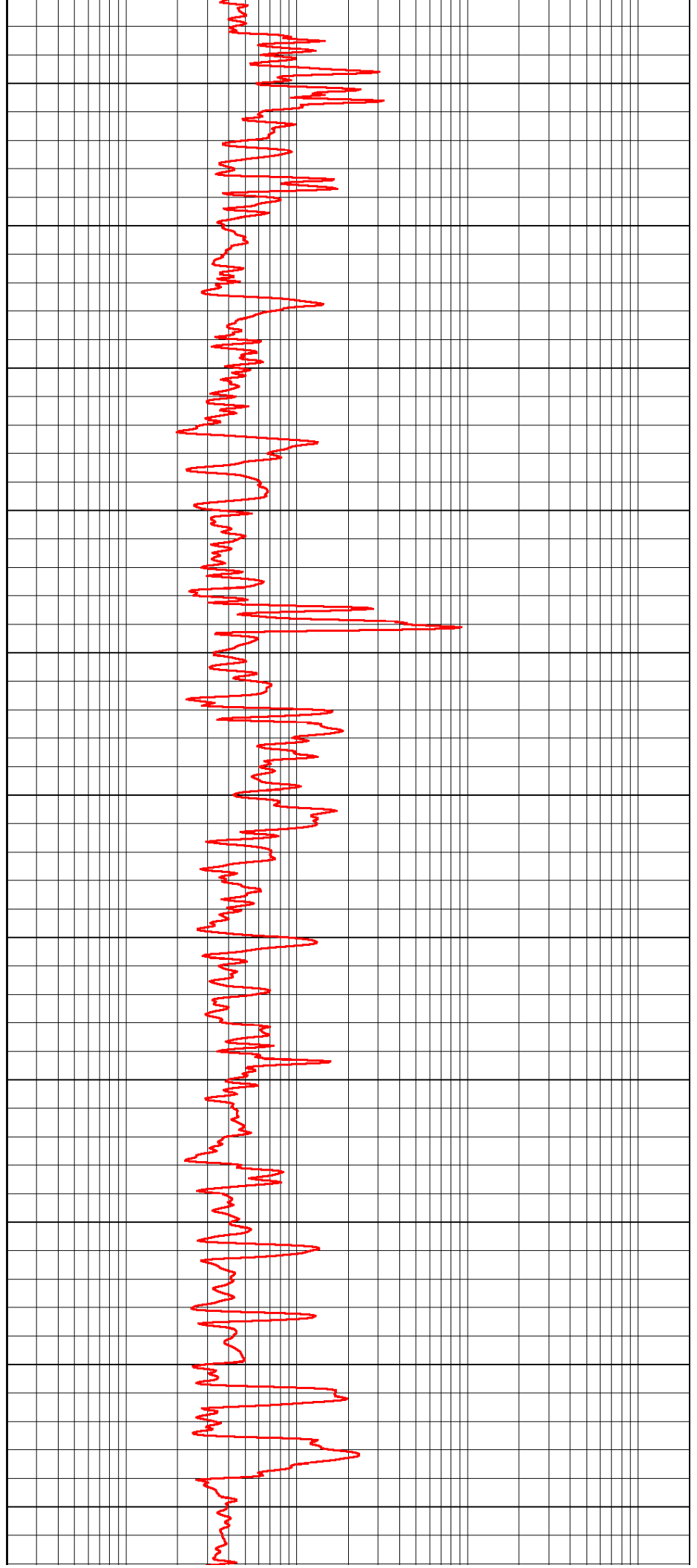
2150

2200

2250

300

350



1850

1900

1950

2000

2050

2100

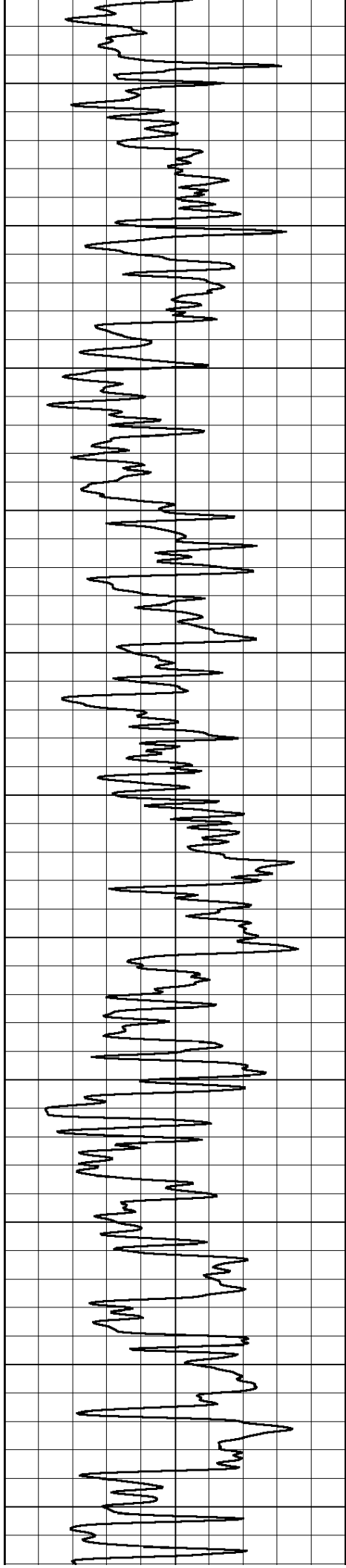
2150

2200

2250

300

350



2400

2450

2500

2550

2600

2650

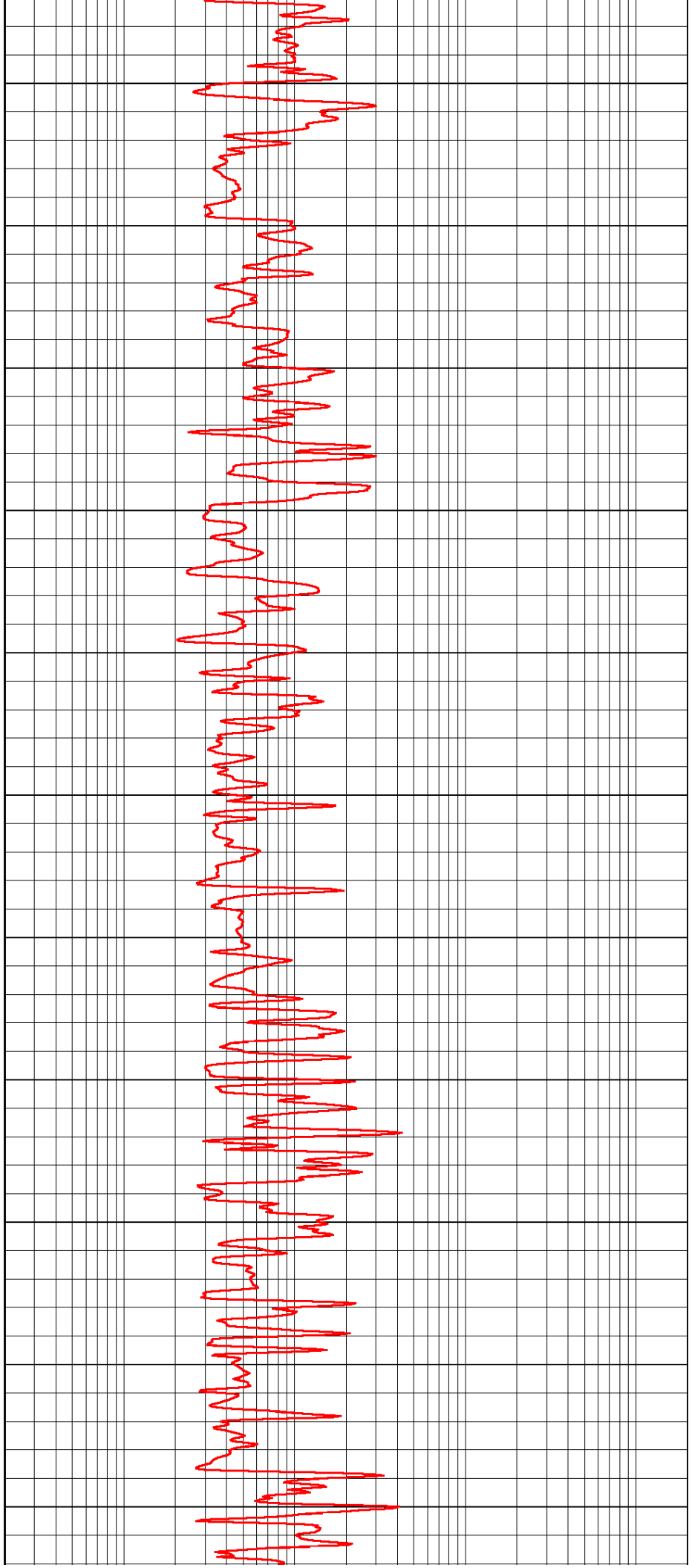
2700

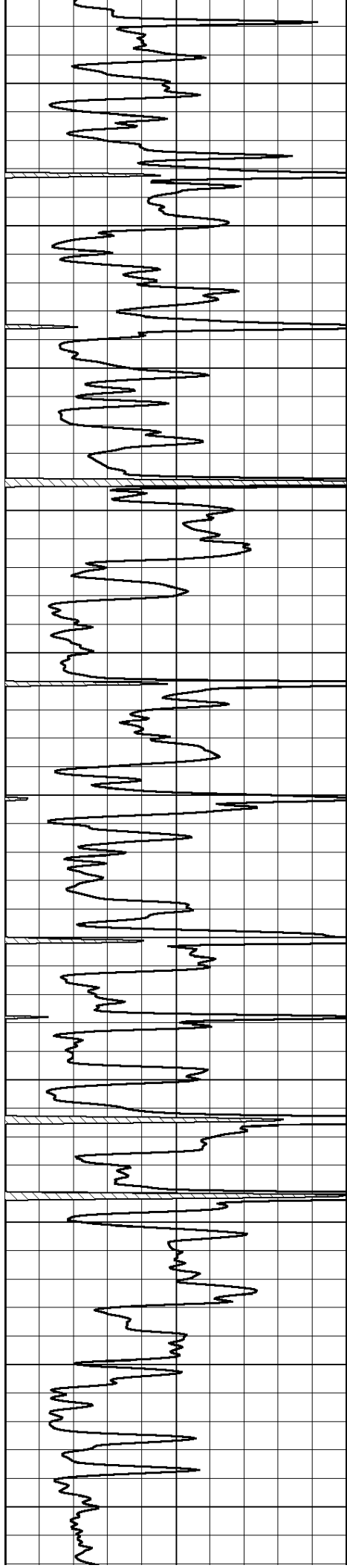
2750

2800

2850

2900





2950

3000

3050

3100

3150

3200

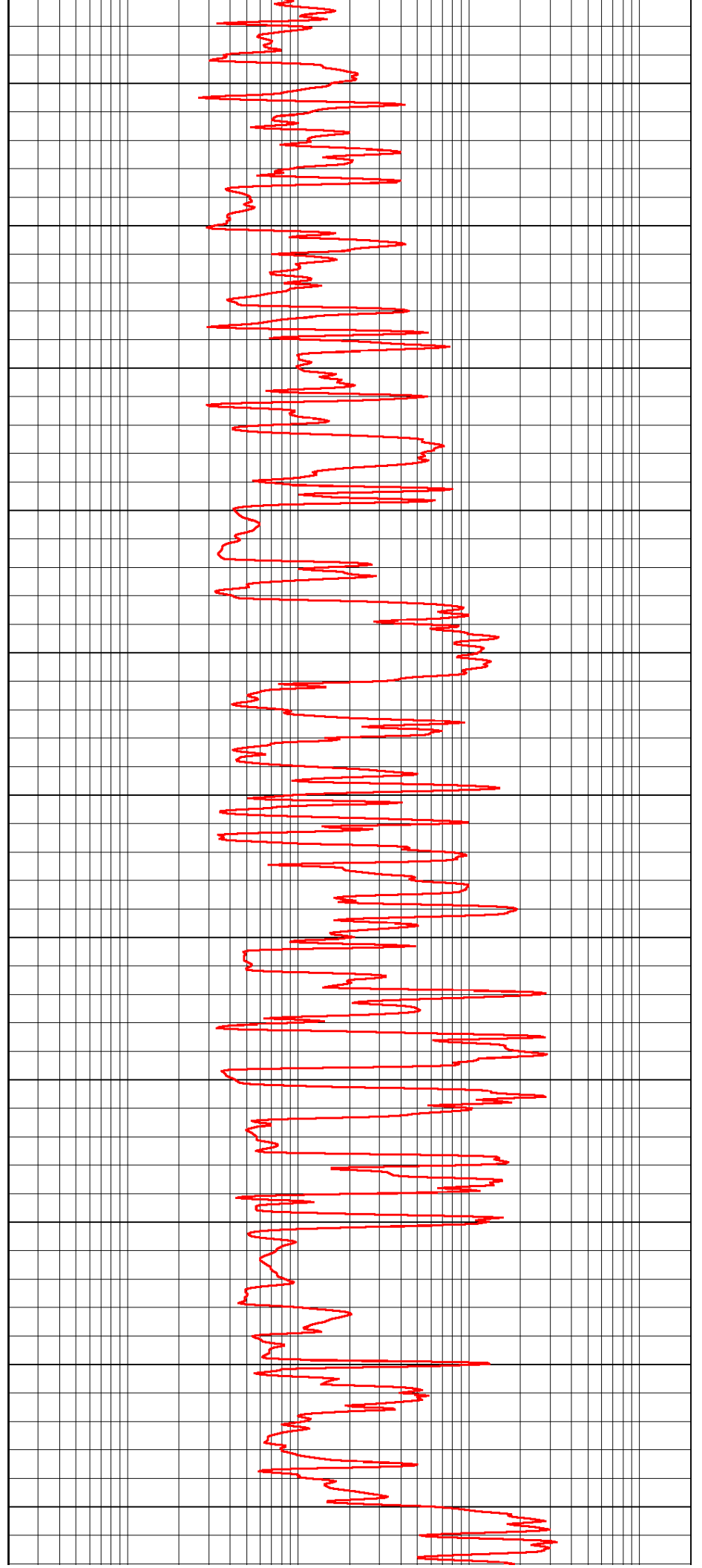
3250

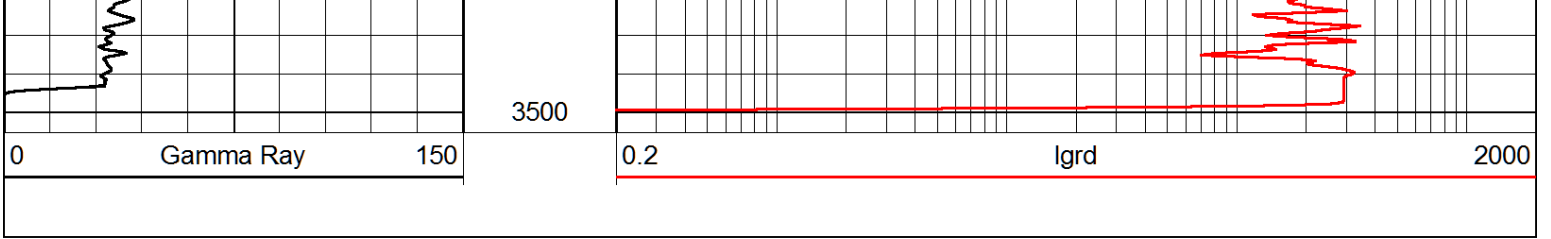
3300

3350

3400

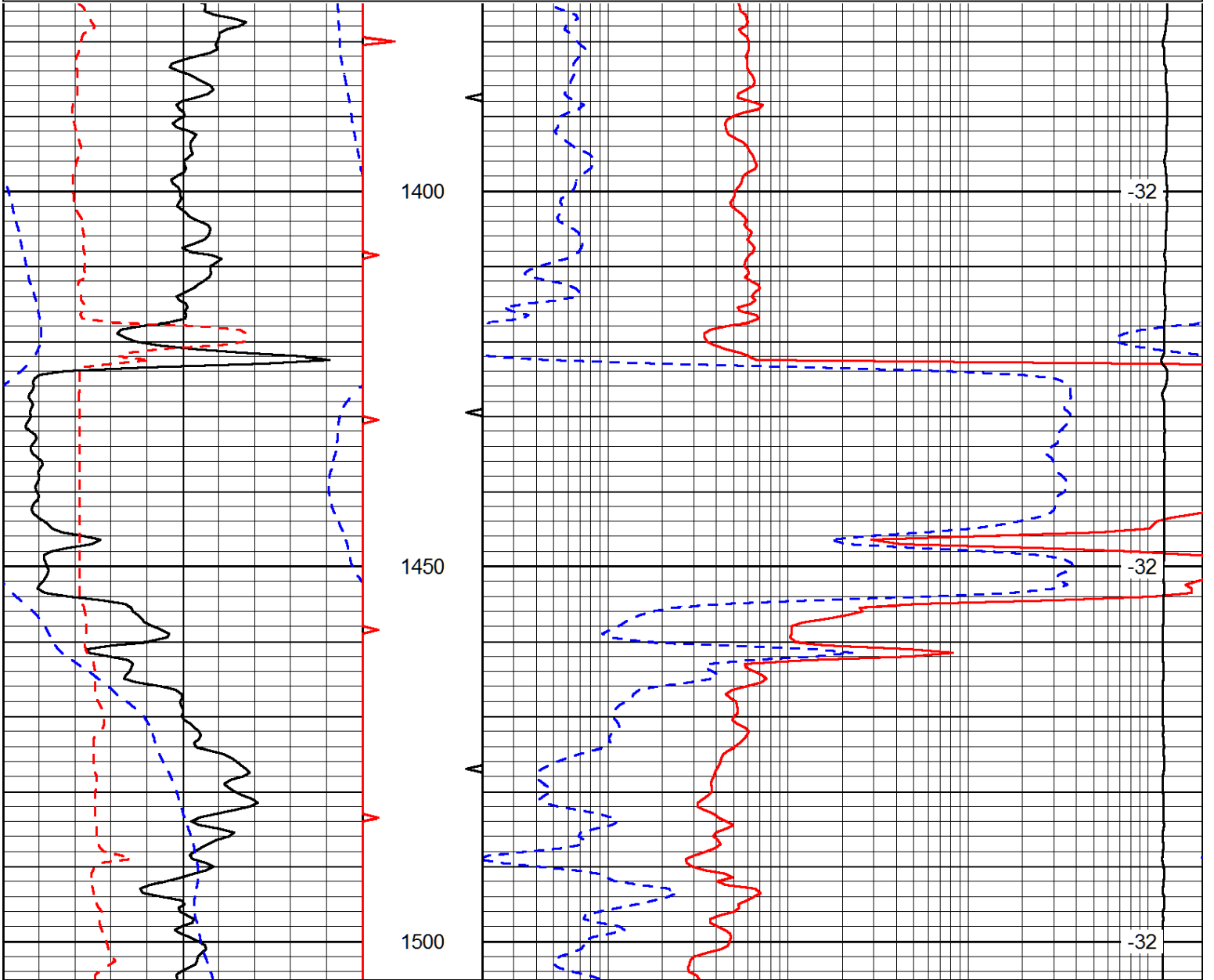
3450





Database File: mccoys_farr_trust_a_2_12_hd.db
 Dataset Pathname: Rag/mcrag
 Presentation Format: rag
 Dataset Creation: Wed Jul 16 02:49:37 2014
 Charted by: Depth in Feet scaled 1:240

0	Gamma Ray	150	0.2	LGRD	2000
6	Caliper (GAPI)	16	560	SWNC	2160
-200	sp (mV)	0	15000	Line Tension	0
					LSPD



0	Gamma Ray	150	0.2	LGRD	2000
6	Caliper (GAPI)	16	560	SWNC	2160
-200	sp (mV)	0	15000	Line Tension	0
					LSPD

Database File: mccoys_farr_trust_a_2_12_hd.db
 Dataset Pathname: Rag/mcrag
 Presentation Format: rag
 Dataset Creation: Wed Jul 16 02:49:37 2014
 Charted by: Depth in Feet scaled 1:240

0	Gamma Ray	150
6	Caliper (GAPI)	16
-200	sp (mV)	0

0.2	LGRD	2000
560	SWNC	2160
15000	Line Tension	0

LSPD

