



Pioneer Energy Services

# Dual Induction Log

15-171-21,085-00-00

API No.

Company Val Energy, Inc.

Well Kirk #V 1-7

Field Frick

County Scott

State

Kansas

Location

SW-NW-NE-SE  
2260' FSL & 1100' FEL

Other Services  
CNL/CDL  
MEL

Sec: 7

Twp: 17S Rge: 33W

Elevation

Permanent Datum Ground Level

Log Measured From Kelly Bushing

K.B. 3094  
D.F.  
G.L. 3084

Drilling Measured From Kelly Bushing

10 Ft. Above Perm. Datum

Date 9/6/2014

Run Number One

Depth Driller 4870

Depth Logger 4872

Bottom Logged Interval 4871

Top Log Interval 200

Casing Driller 8.625 @ 229

Casing Logger 226

Bit Size 7.875

Type Fluid in Hole Chemical

Salinity, ppm CL 6,000

Density / Viscosity 9.0 65

pH / Fluid Loss 9.5 8.8

Source of Sample Flowline

Rm @ Meas. Temp .40 @ 60

Rmf @ Meas. Temp .30 @ 60

Rmc @ Meas. Temp .54 @ 60

Source of Rmf / Rmc Charts

Rm @ BHT .19 @ 125

Operating Rig Time 4 Hours

Max Rec. Temp. F 125

Equipment Number 108

Location Hays

Recorded By J. Hennickson

Witnessed By Harley Sayles

<<< Fold Here >>>

All interpretations are opinions based on inferences from electrical or other measurements and we cannot and do not guarantee the accuracy or correctness of any interpretation, and we shall not, except in the case of gross or willful negligence on our part, be liable or responsible for any loss, costs, damages, or expenses incurred or sustained by anyone resulting from any interpretation made by any of our officers, agents or employees. These interpretations are also subject to our general terms and conditions set out in our current Price Schedule.

## Comments

Thank you for using Pioneer Energy Services  
[www.pioneerenergy.com](http://www.pioneerenergy.com)  
 785 625 3858

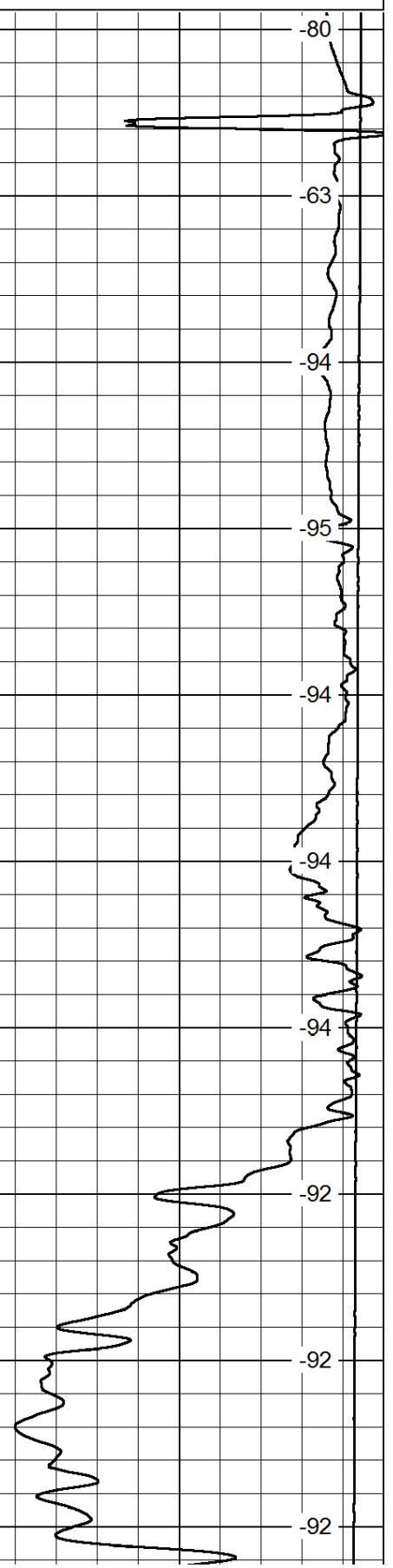
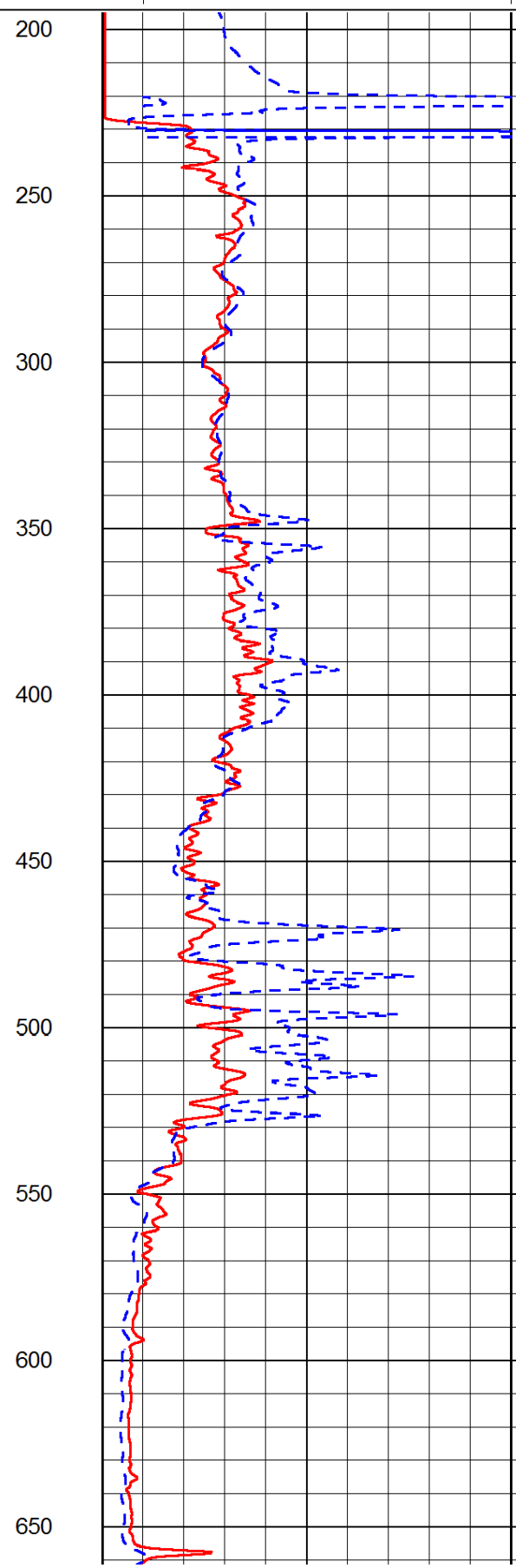
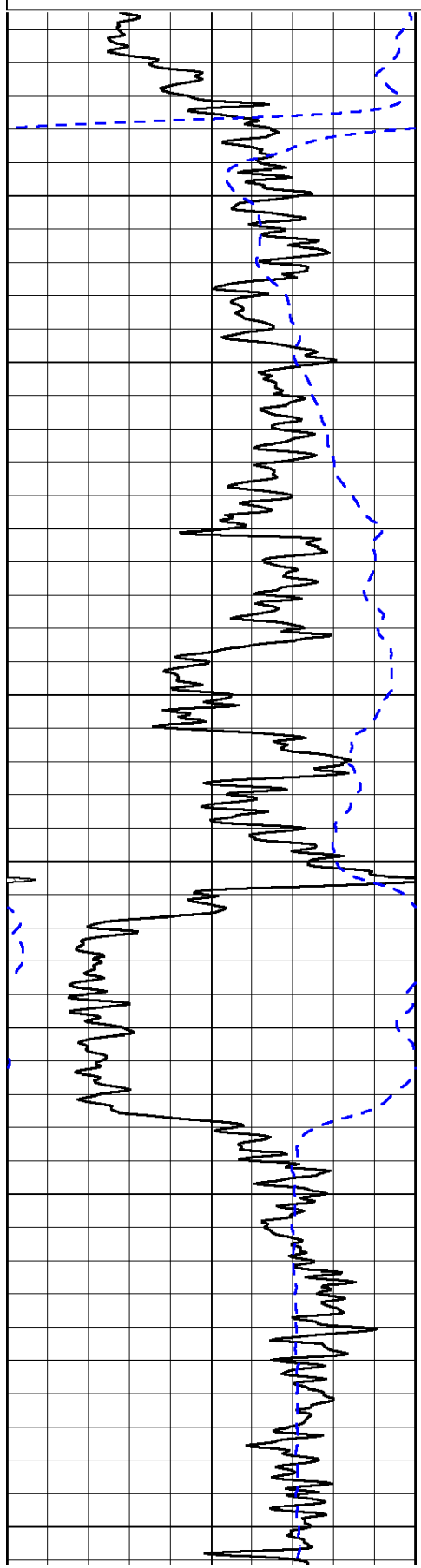
Scott City Kansas  
 8 North to HWY 4, 5 West, 1/2 South, West Into

Database File: c:\warrior\data\val\_kirk #v 1-7\val\_kirk\_v1\_7hd.db  
 Dataset Pathname: DIL\valstk  
 Presentation Format: dil2in  
 Dataset Creation: Sat Sep 06 06:55:49 2014  
 Charted by: Depth in Feet scaled 1:600

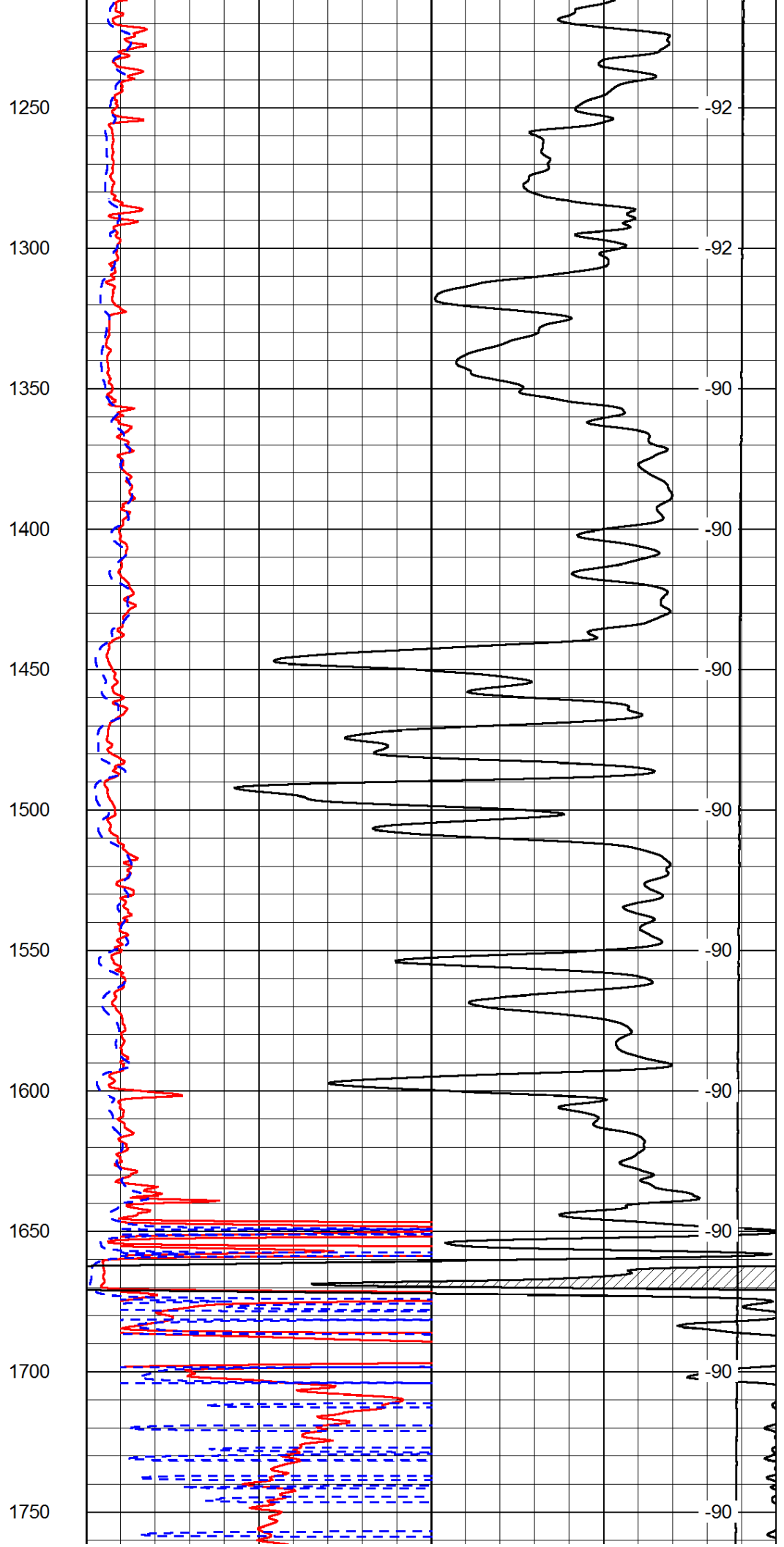
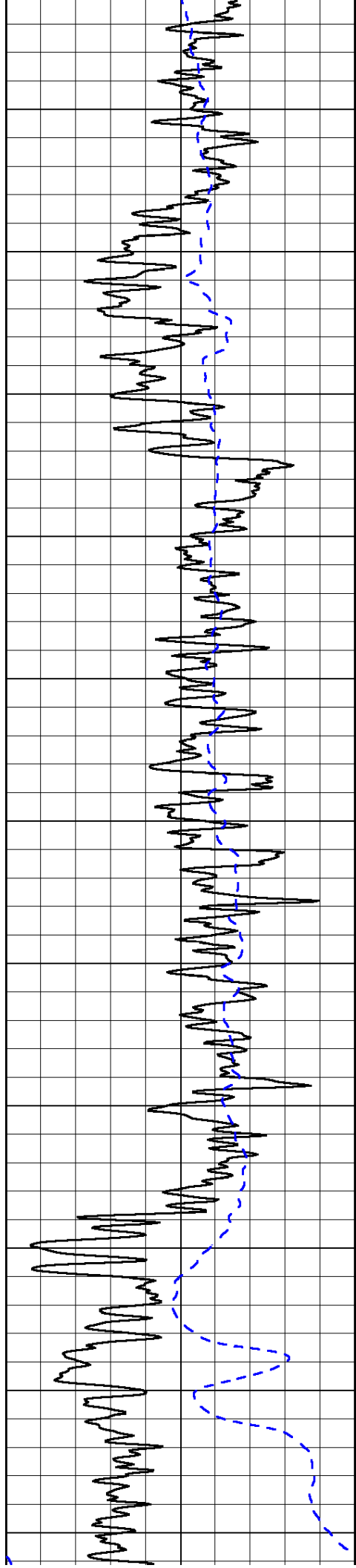
0	Gamma Ray	150
-200	SP (mV)	0

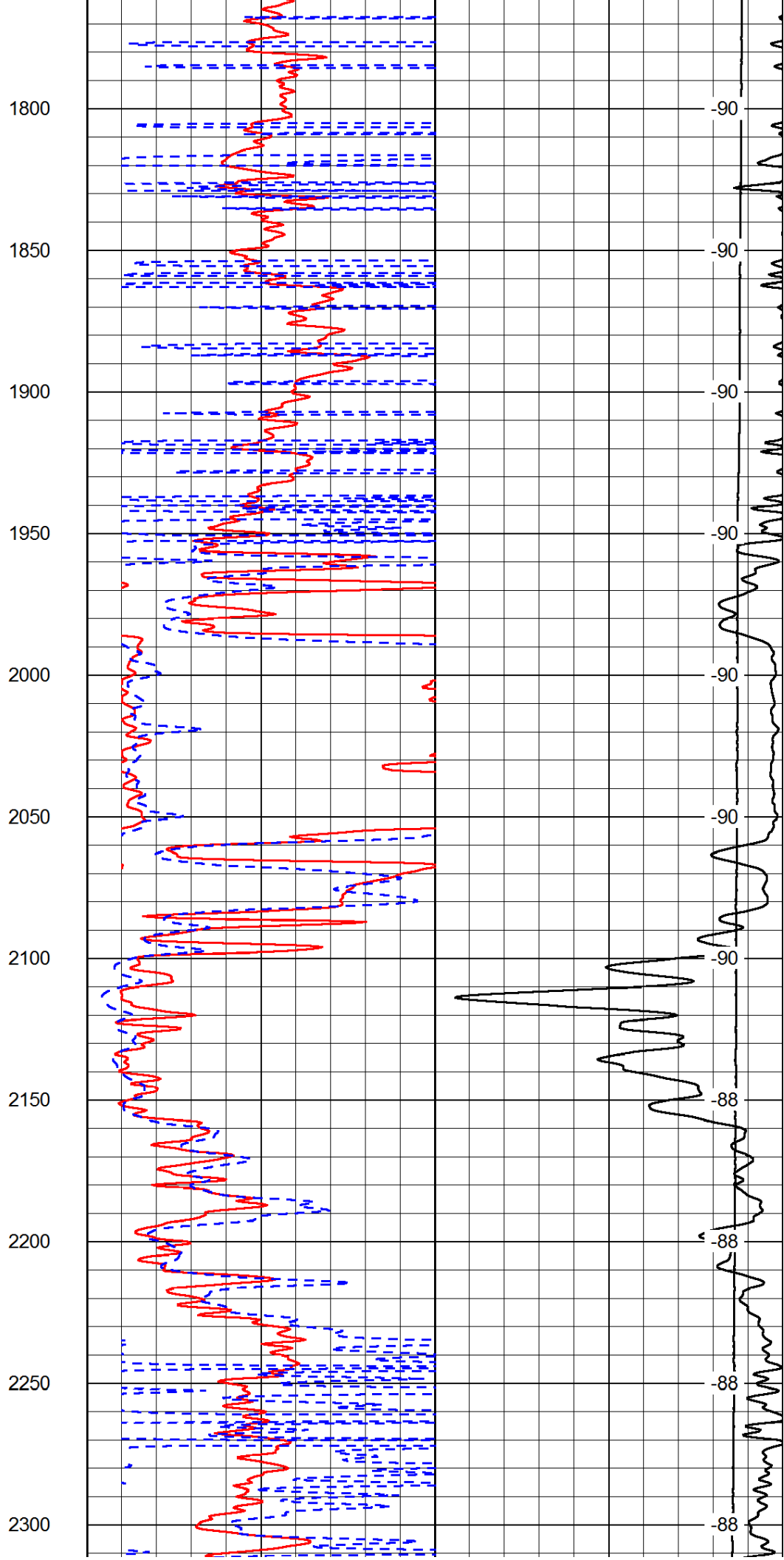
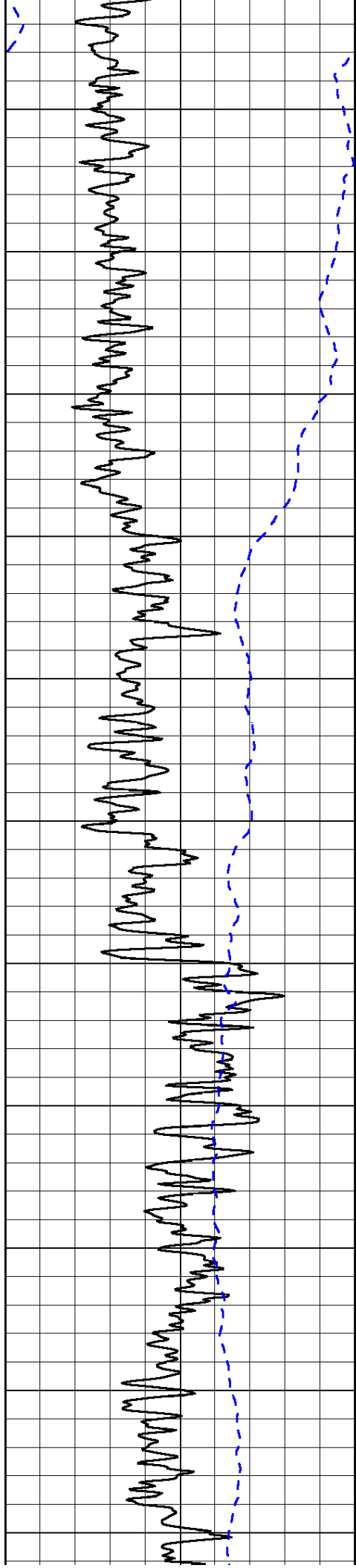
0	Shallow Resistivity	50
0	Deep Resistivity	50
1000	Conductivity	0
15000	Line Tension	0
50	Shallow Resistivity	500
50	Deep Resistivity	500

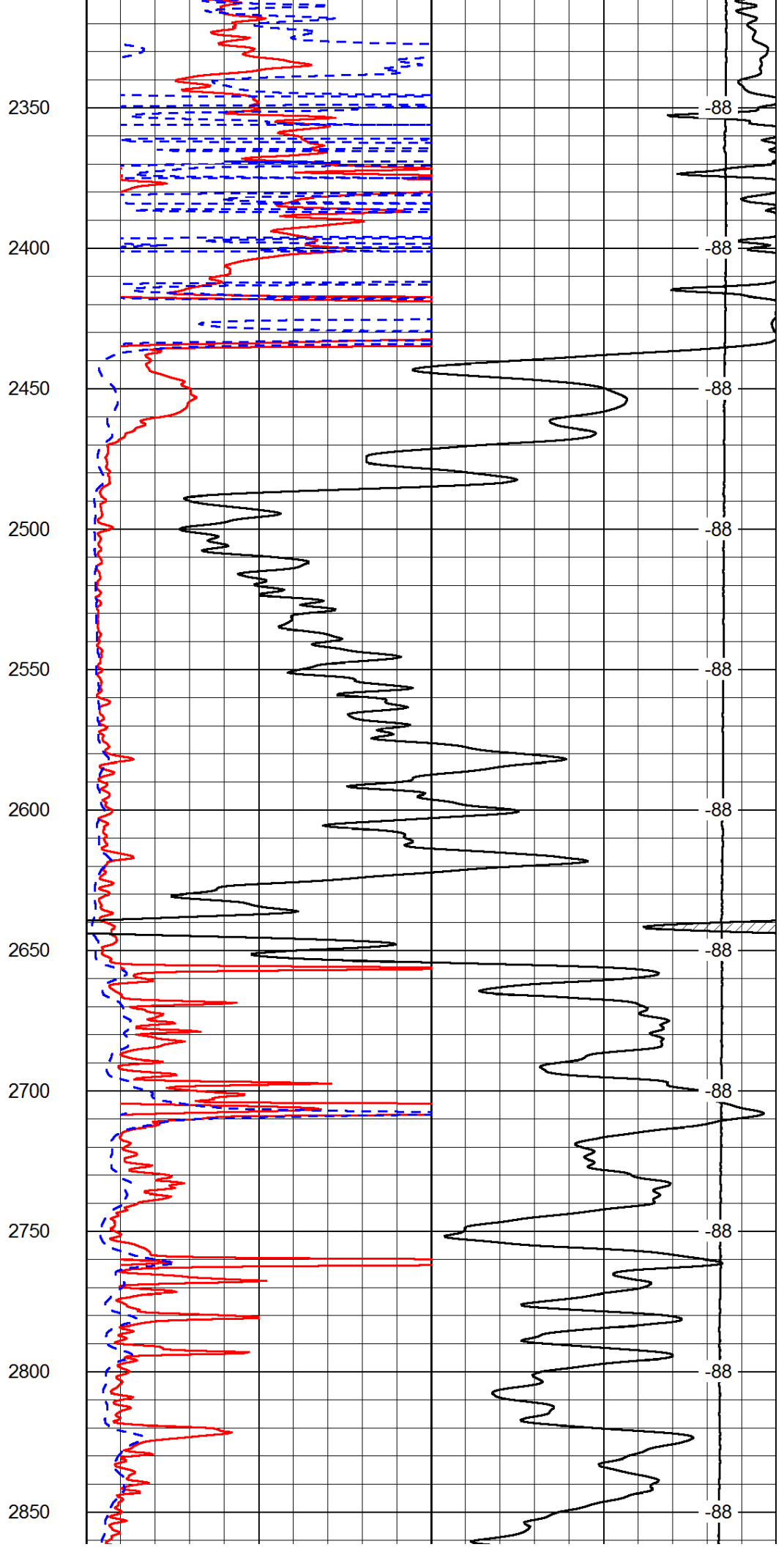
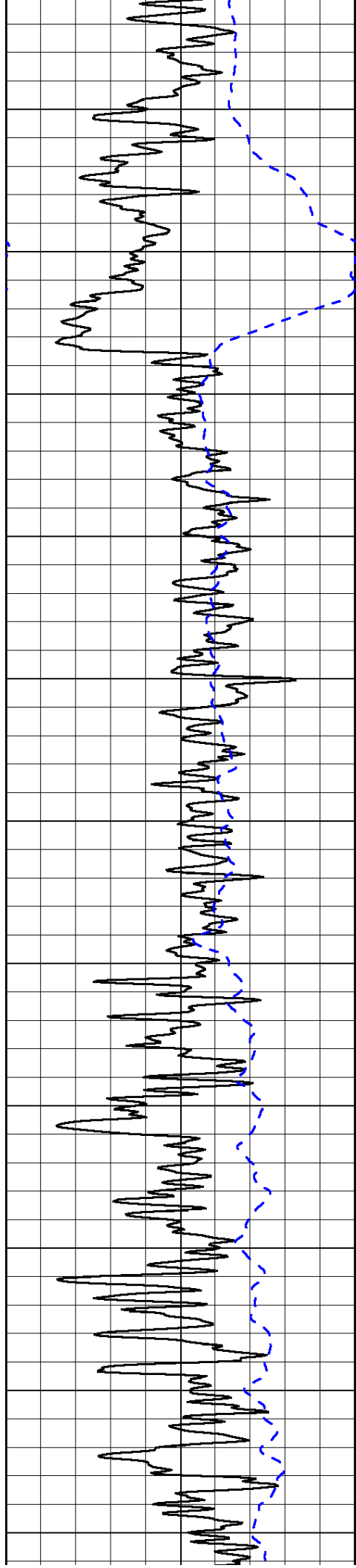
LSPD
------

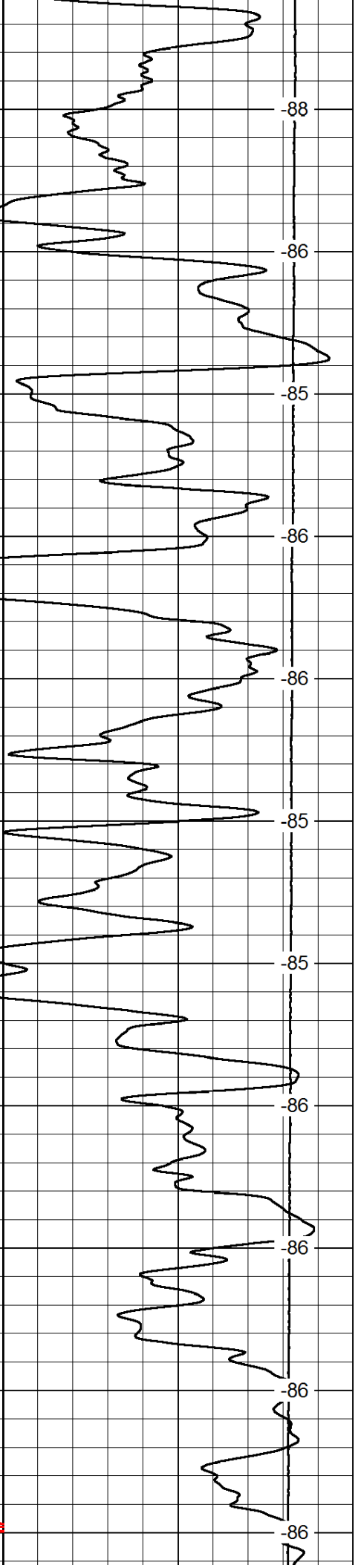
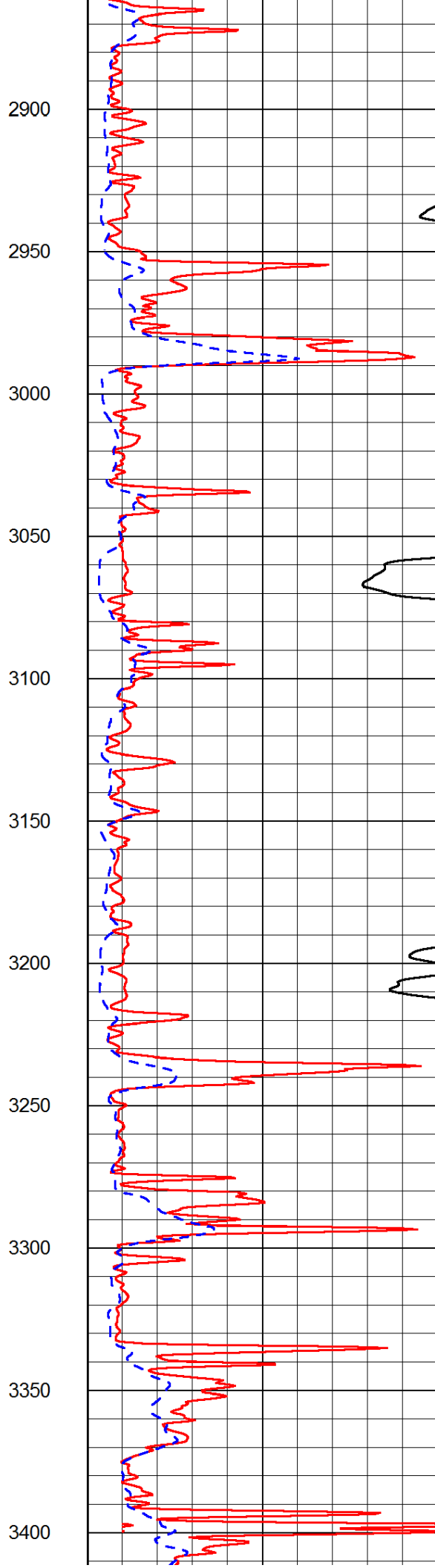
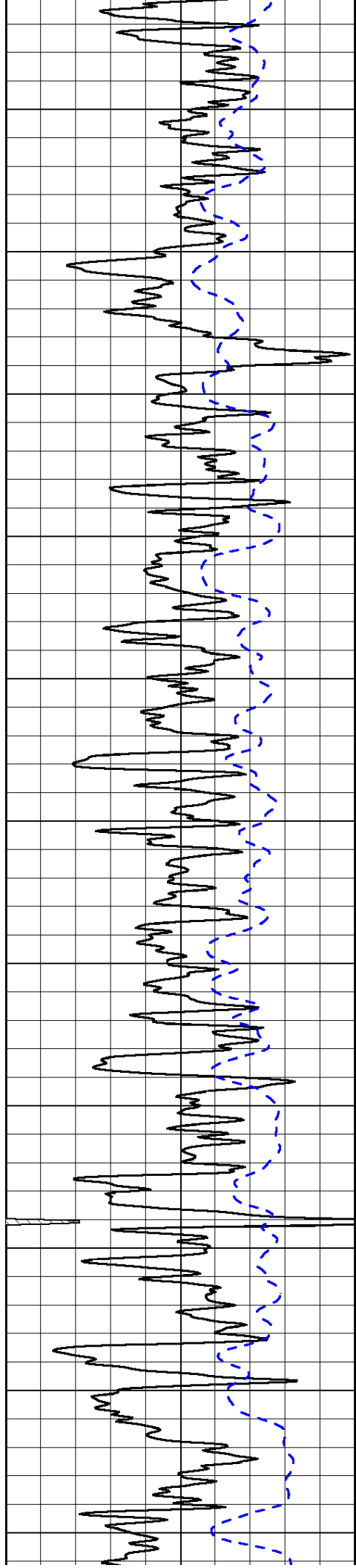


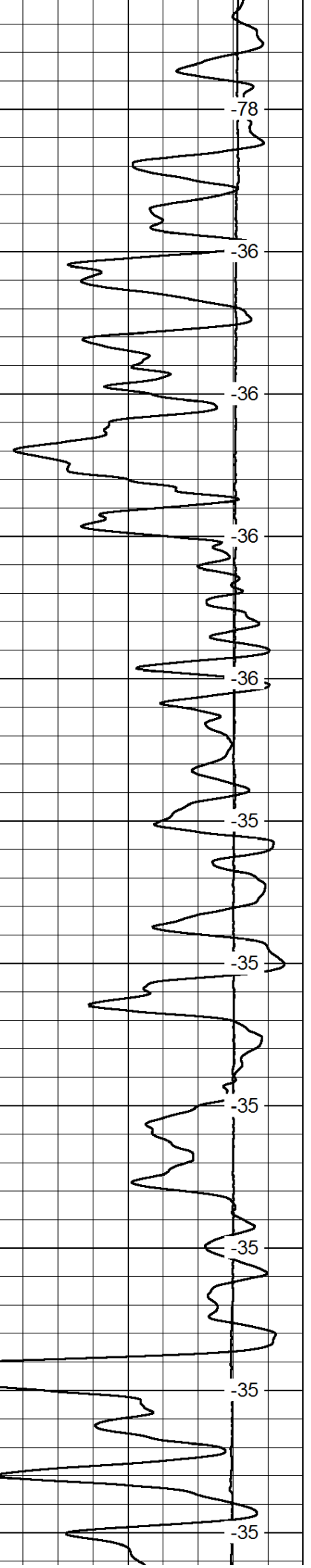
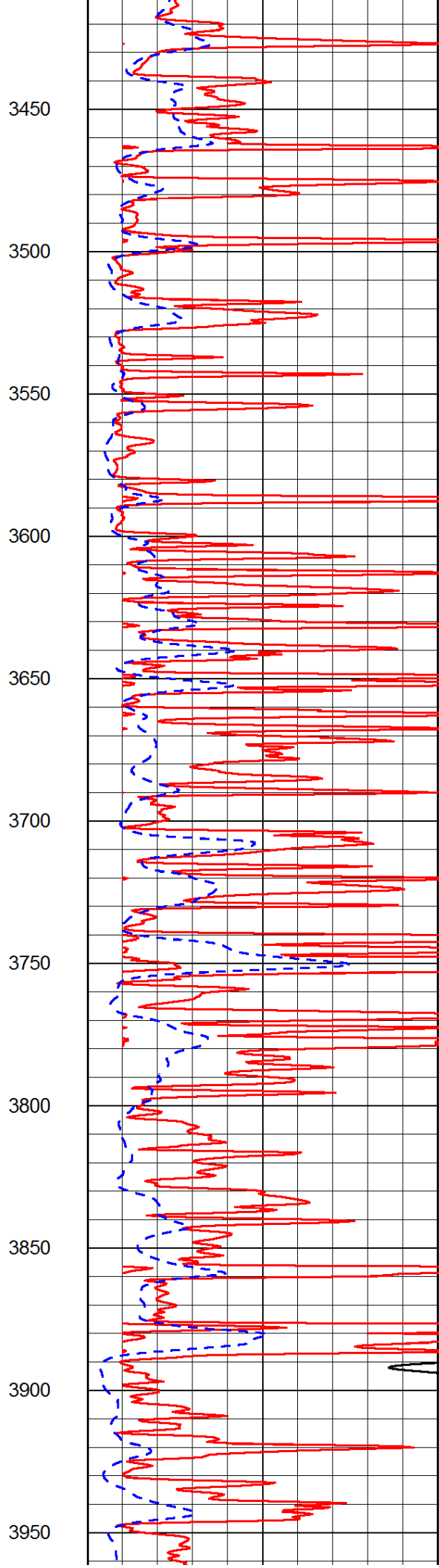
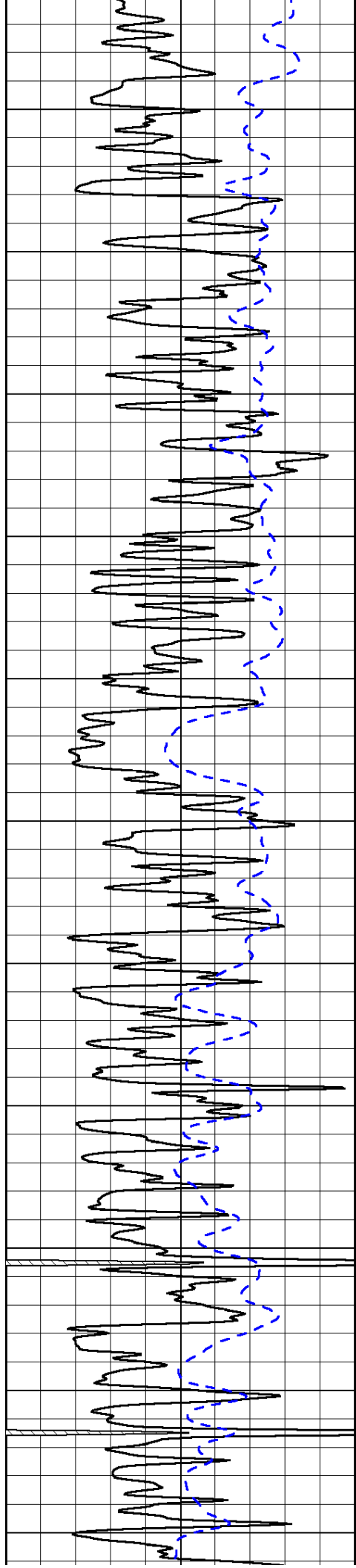


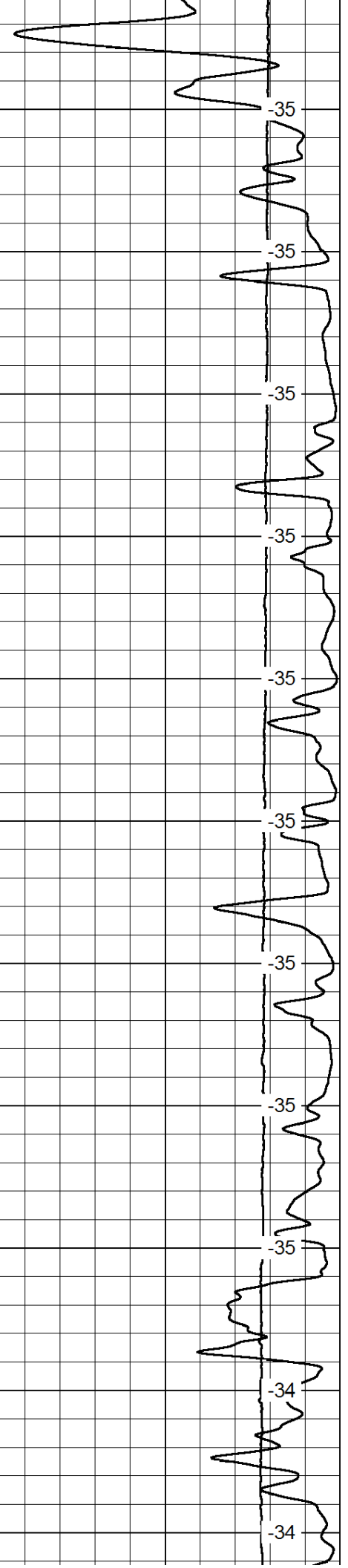
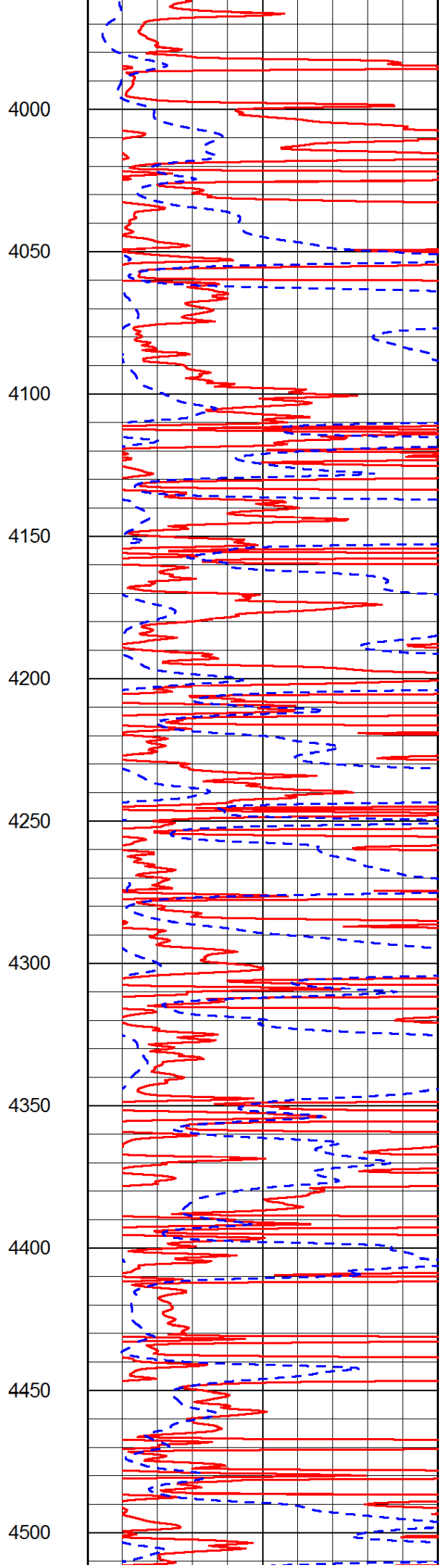
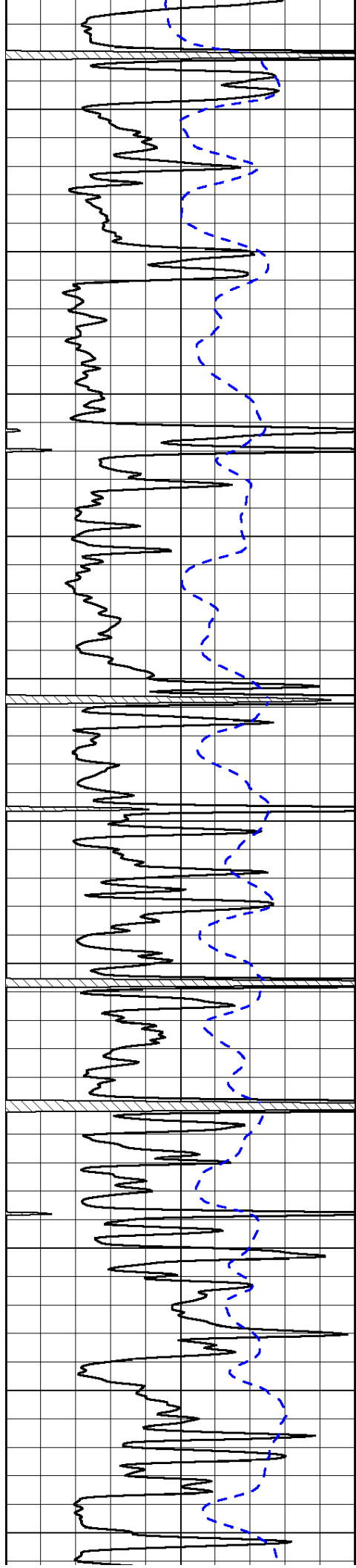


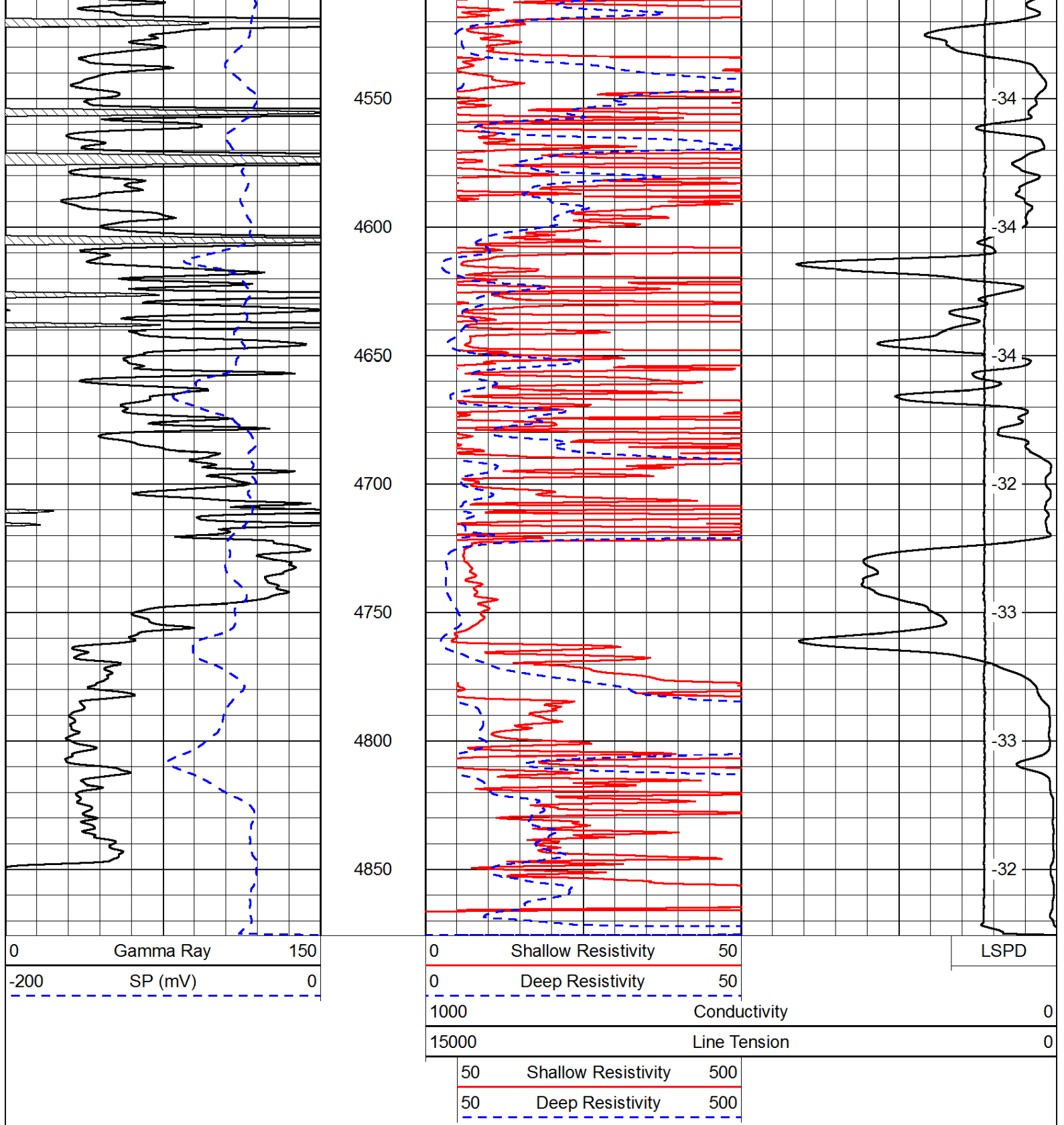




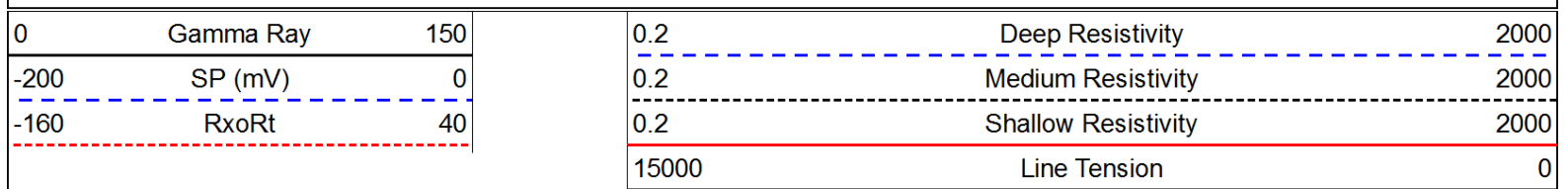


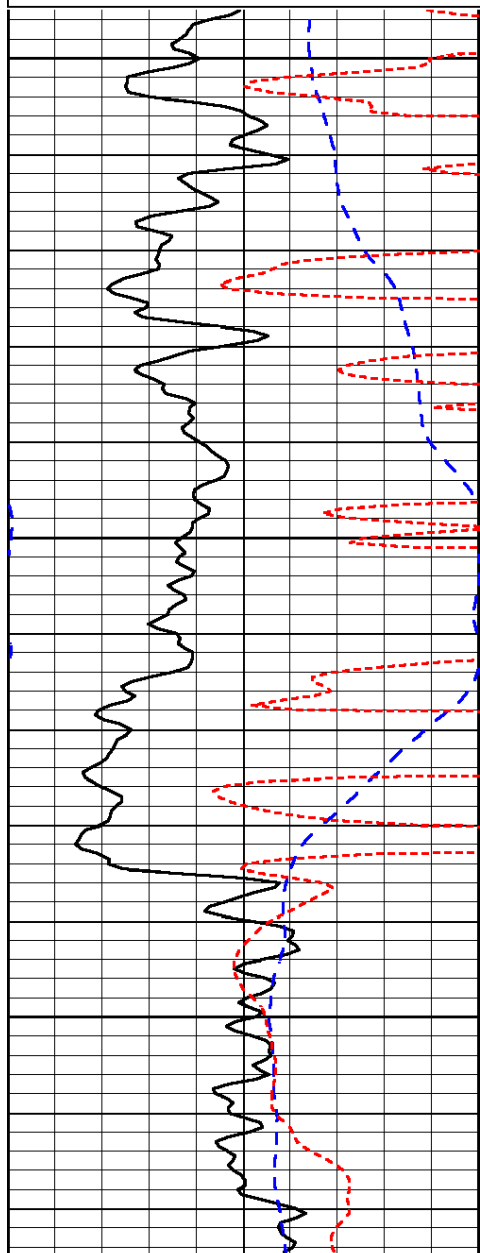






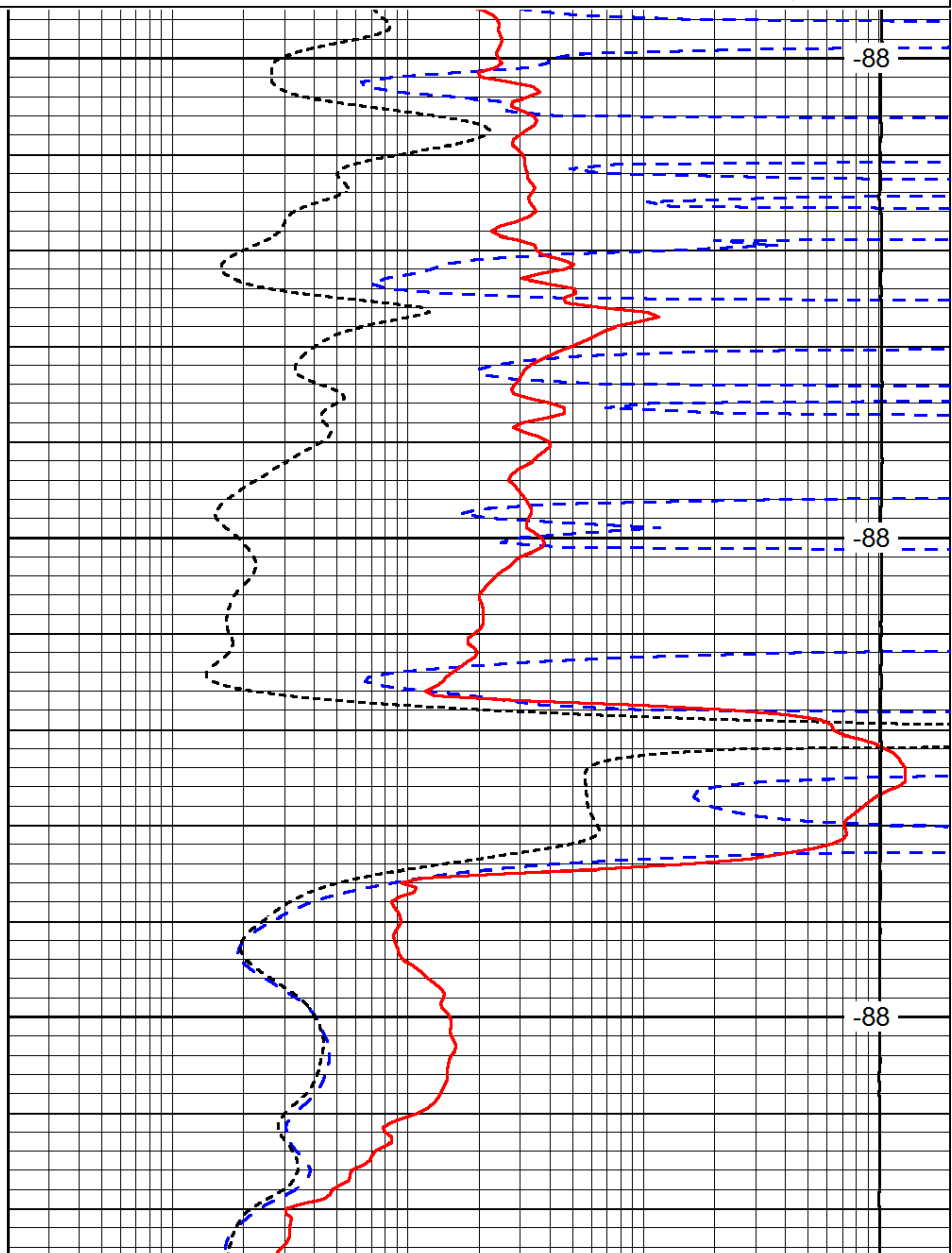
Database File: c:\warrior\data\val\_kirk #v 1-7\val\_kirk\_v1\_7hd.db  
 Dataset Pathname: DIL\valstk  
 Presentation Format: dil  
 Dataset Creation: Sat Sep 06 06:55:49 2014  
 Charted by: Depth in Feet scaled 1:240





2350  
2400  
2450

0	Gamma Ray	150
-200	SP (mV)	0
-160	RxoRt	40



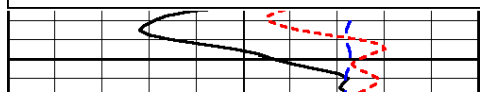
-88  
-88  
-88

0.2	Deep Resistivity	2000
0.2	Medium Resistivity	2000
0.2	Shallow Resistivity	2000
15000	Line Tension	0

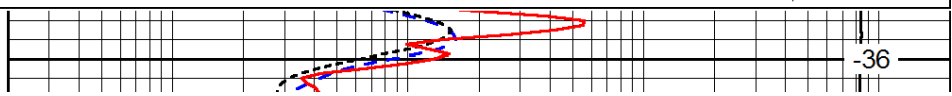
Database File: c:\warrior\data\val\_kirk #v 1-7\val\_kirk\_v1\_7hd.db  
 Dataset Pathname: DIL\valstk  
 Presentation Format: dil  
 Dataset Creation: Sat Sep 06 06:55:49 2014  
 Charted by: Depth in Feet scaled 1:240

0	Gamma Ray	150
-200	SP (mV)	0
-160	RxoRt	40

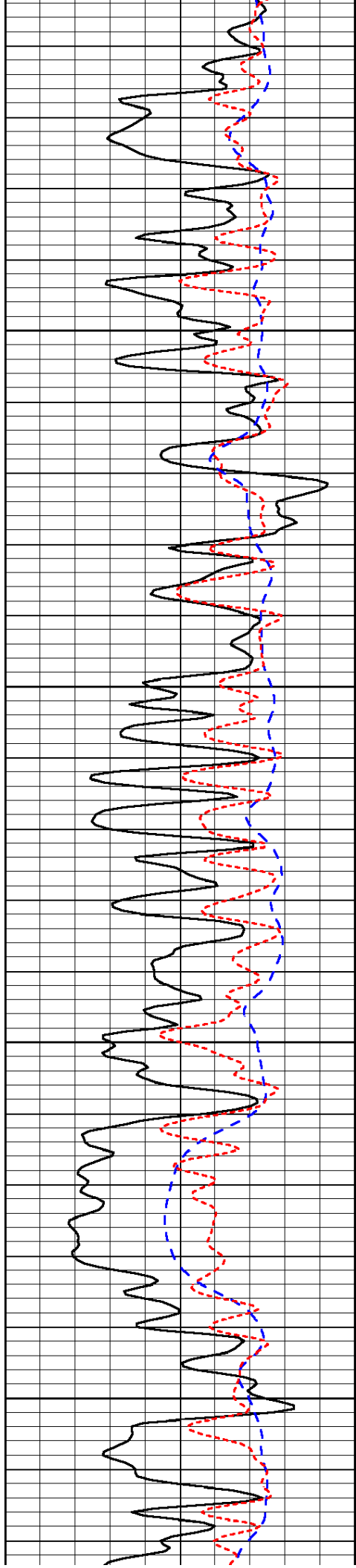
0.2	Deep Resistivity	2000
0.2	Medium Resistivity	2000
0.2	Shallow Resistivity	2000
15000	Line Tension	0



3500



-36

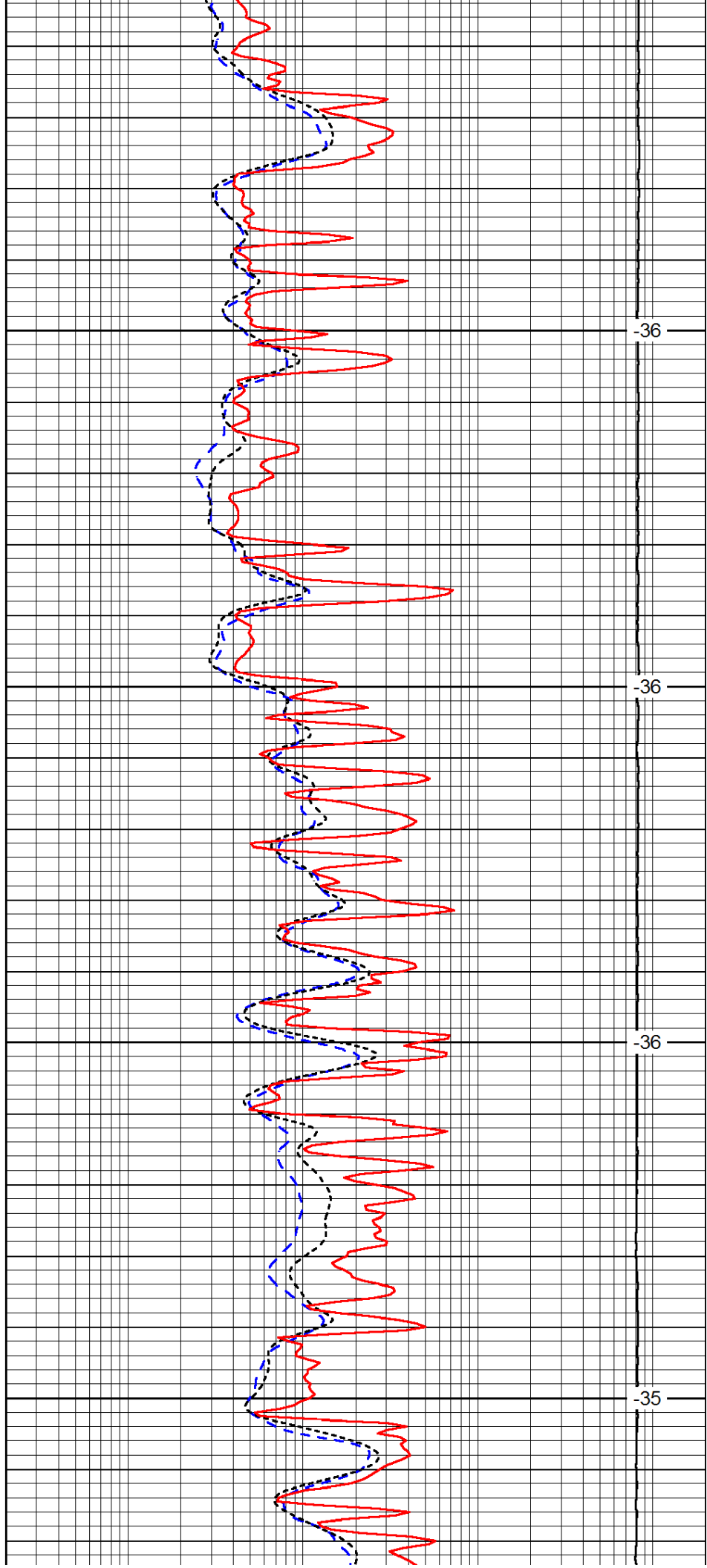


3550

3600

3650

3700

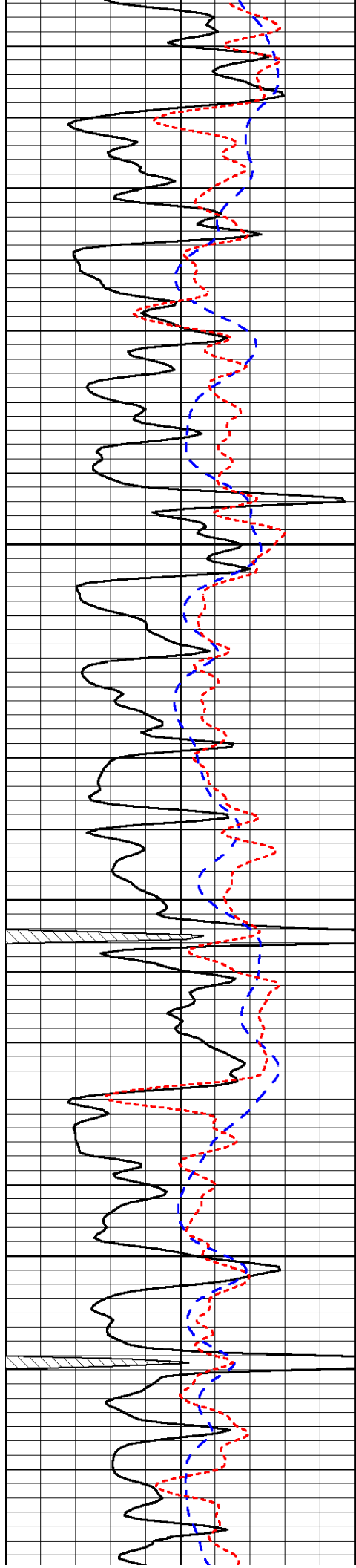


-36

-36

-36

-35

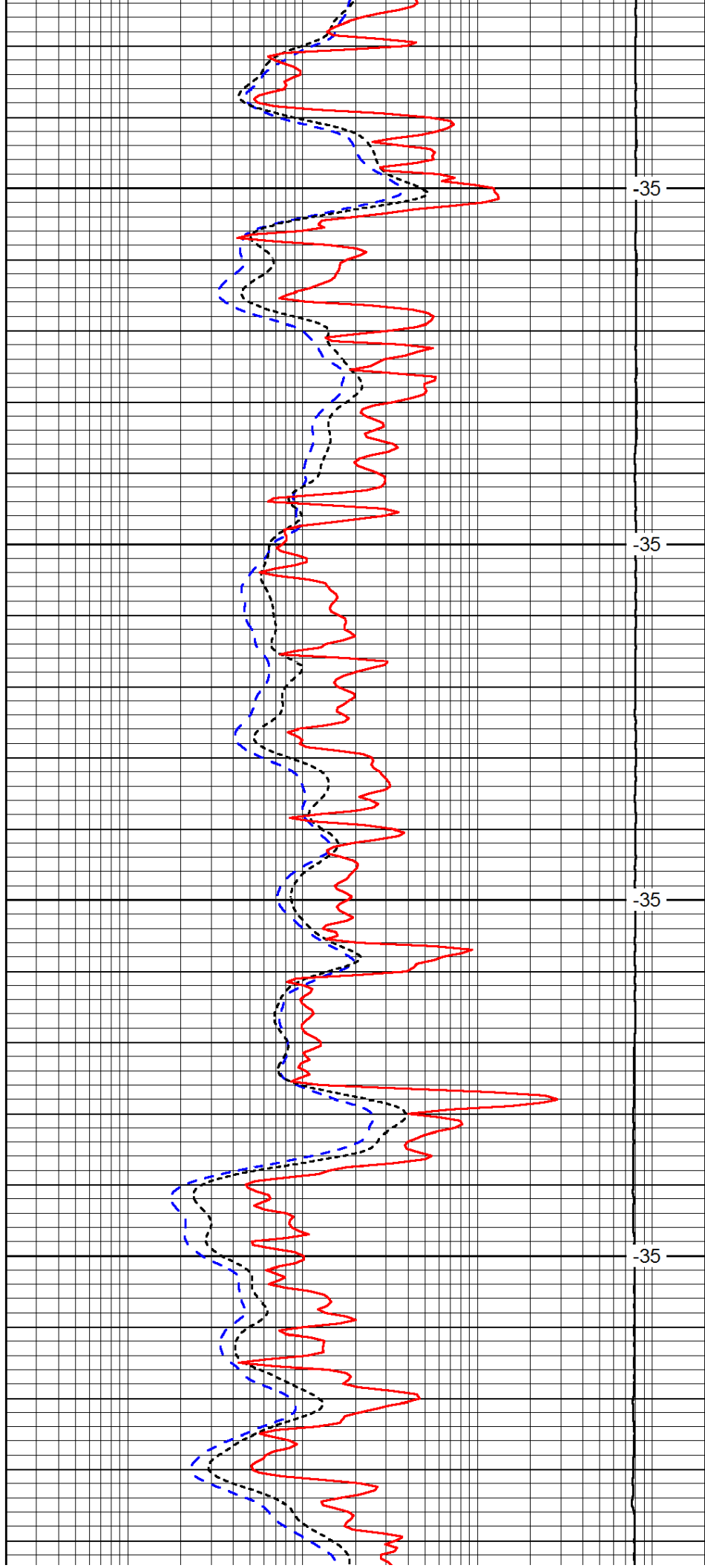


3750

3800

3850

3900

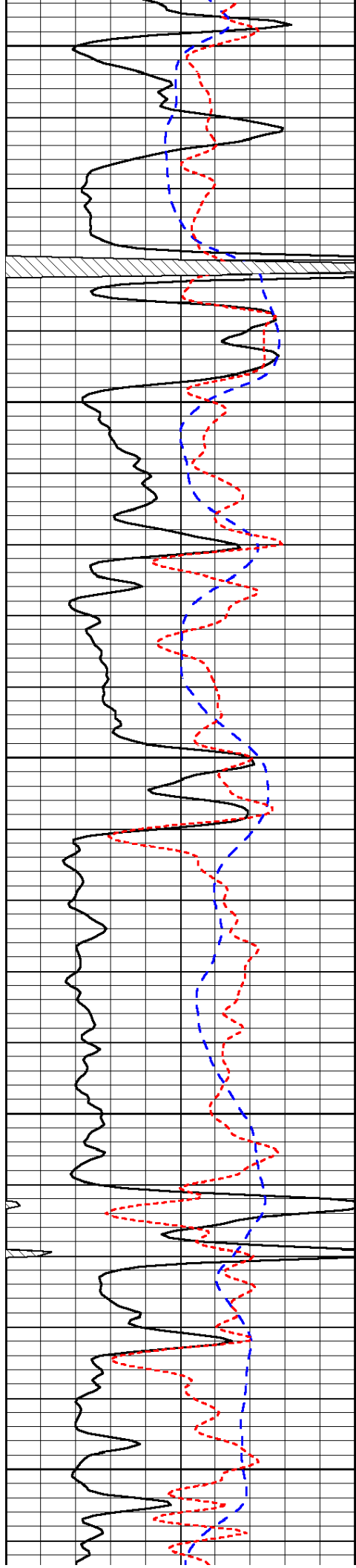


-35

-35

-35

-35



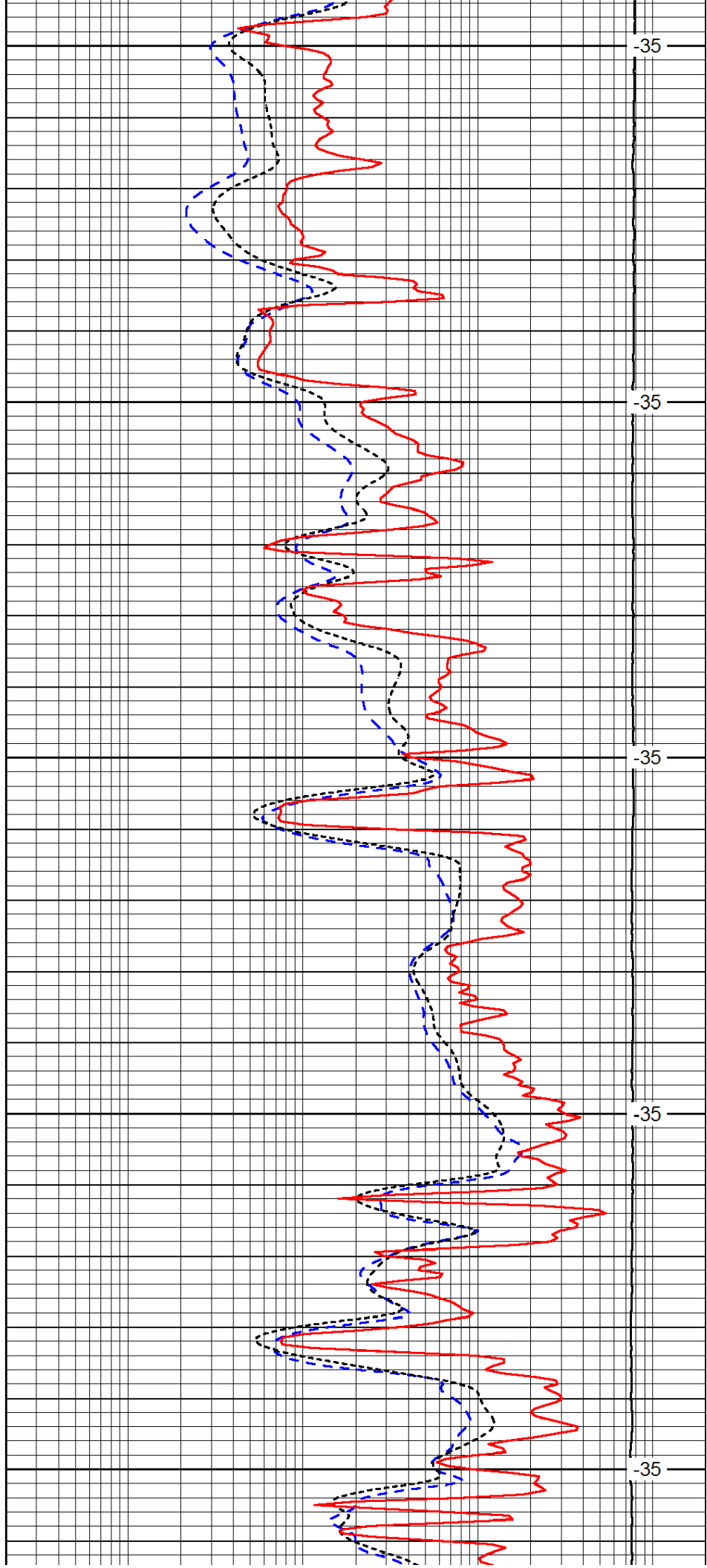
3950

4000

4050

4100

4150



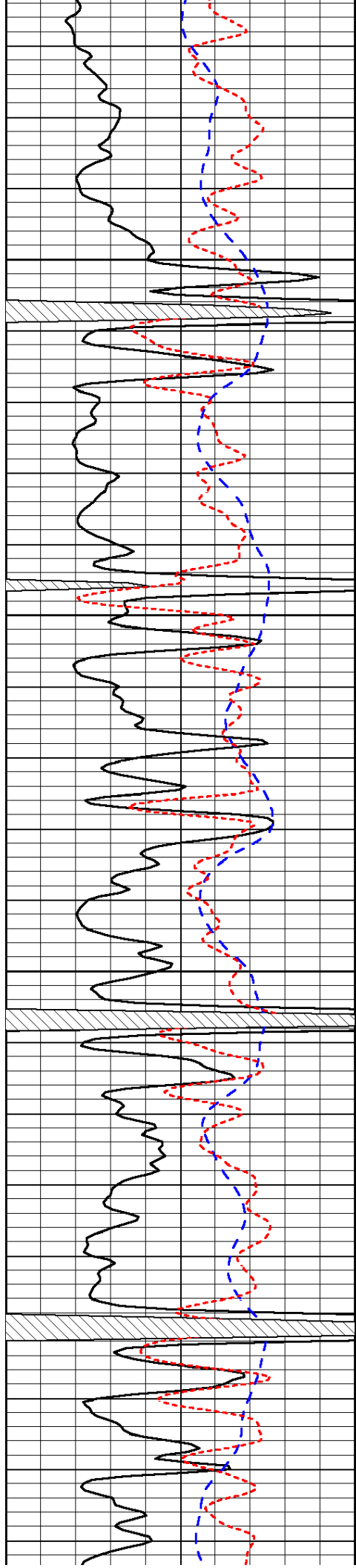
-35

-35

-35

-35

-35

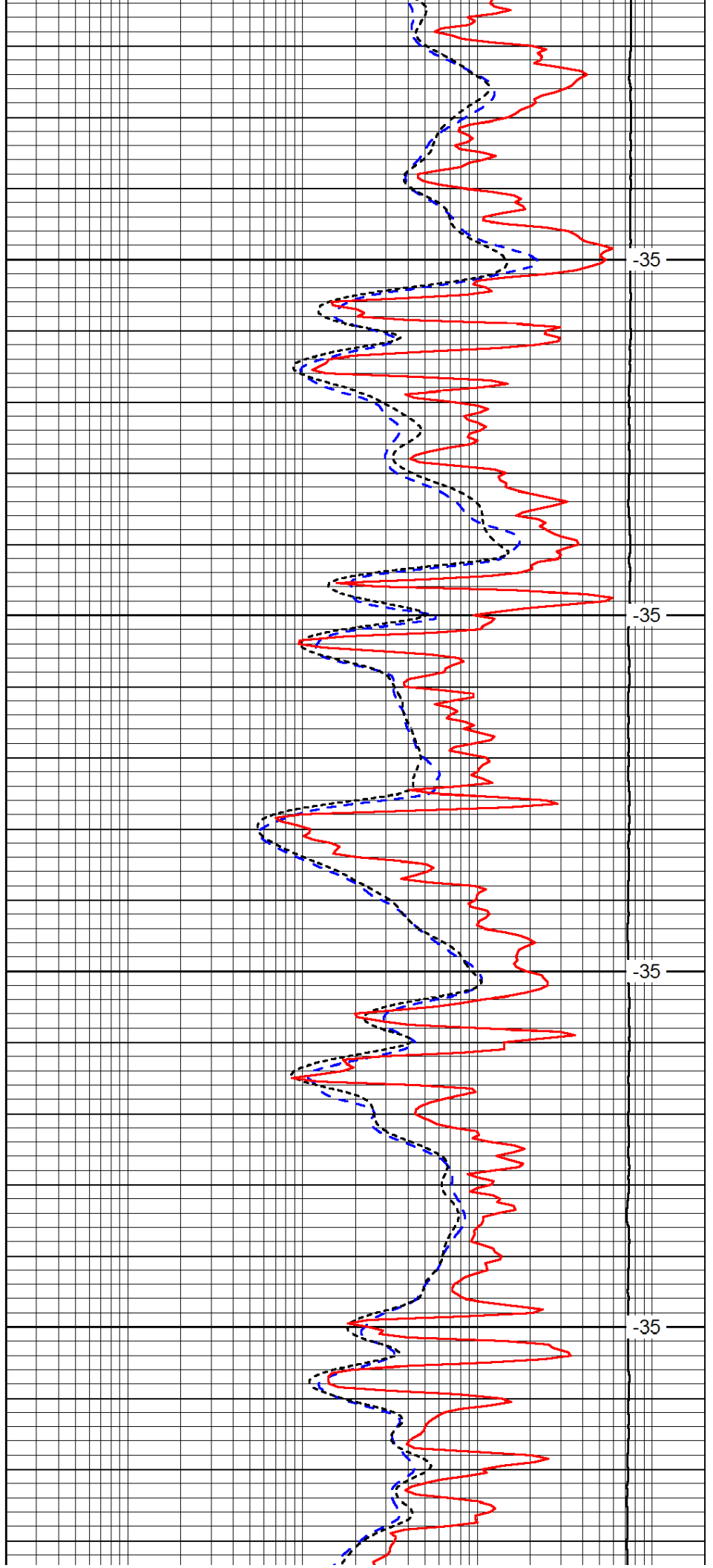


4200

4250

4300

4350

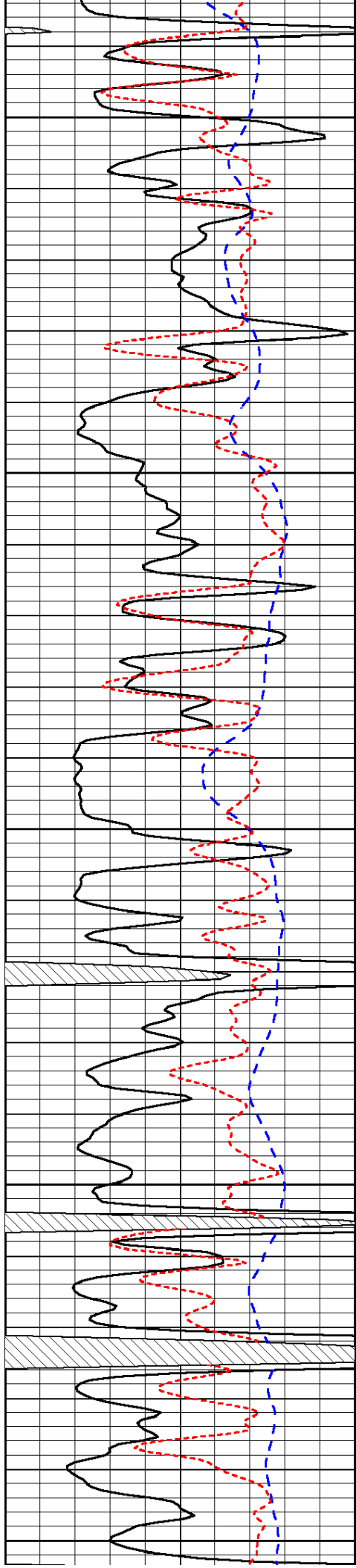


-35

-35

-35

-35



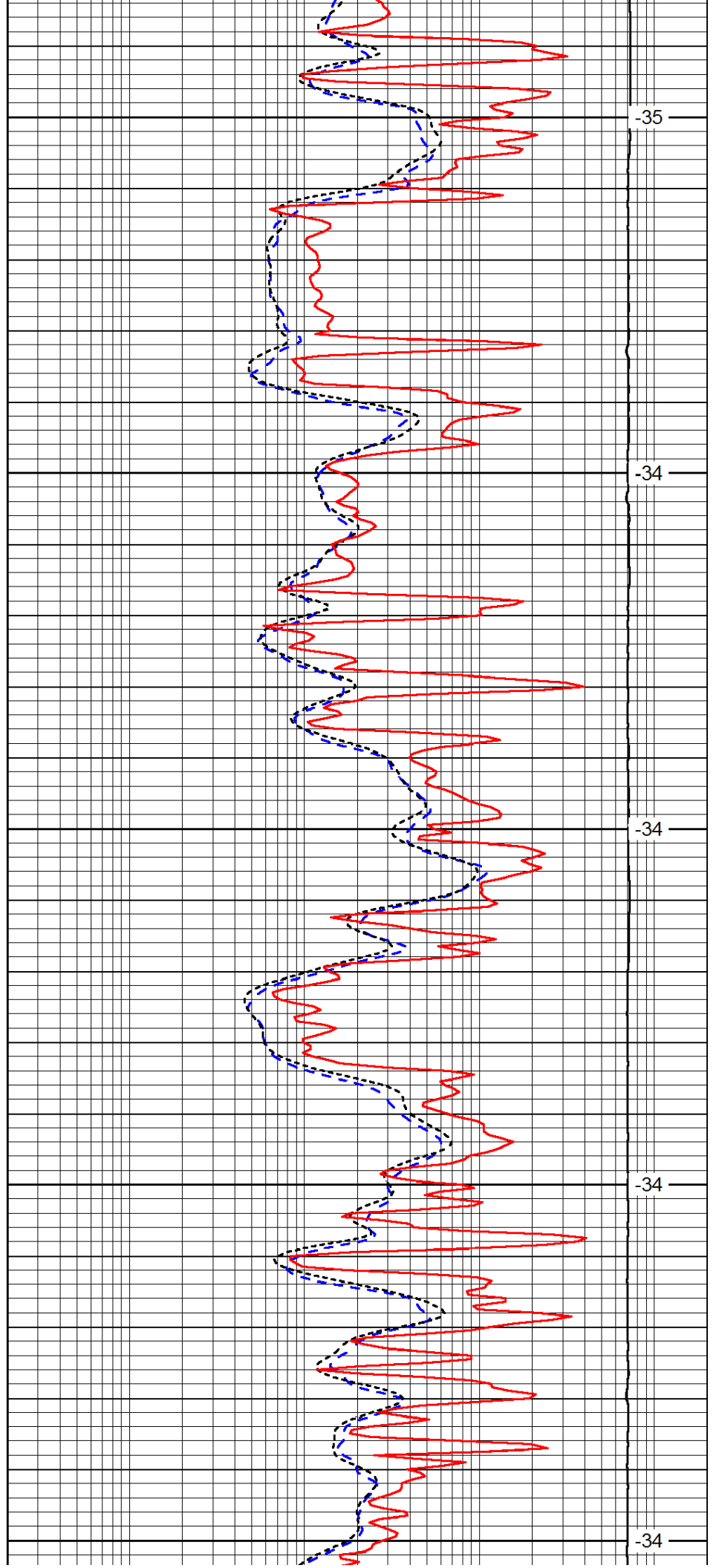
4400

4450

4500

4550

4600



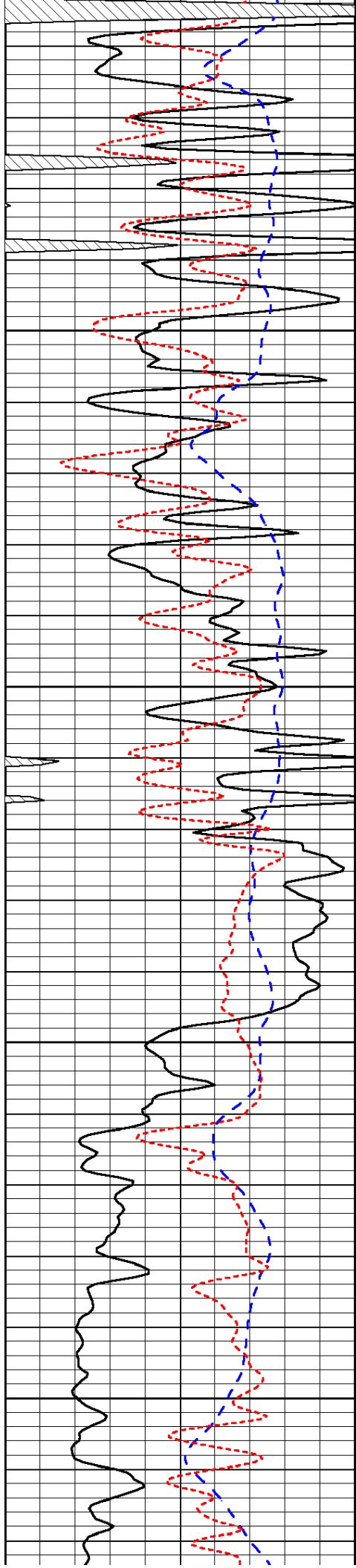
-35

-34

-34

-34

-34

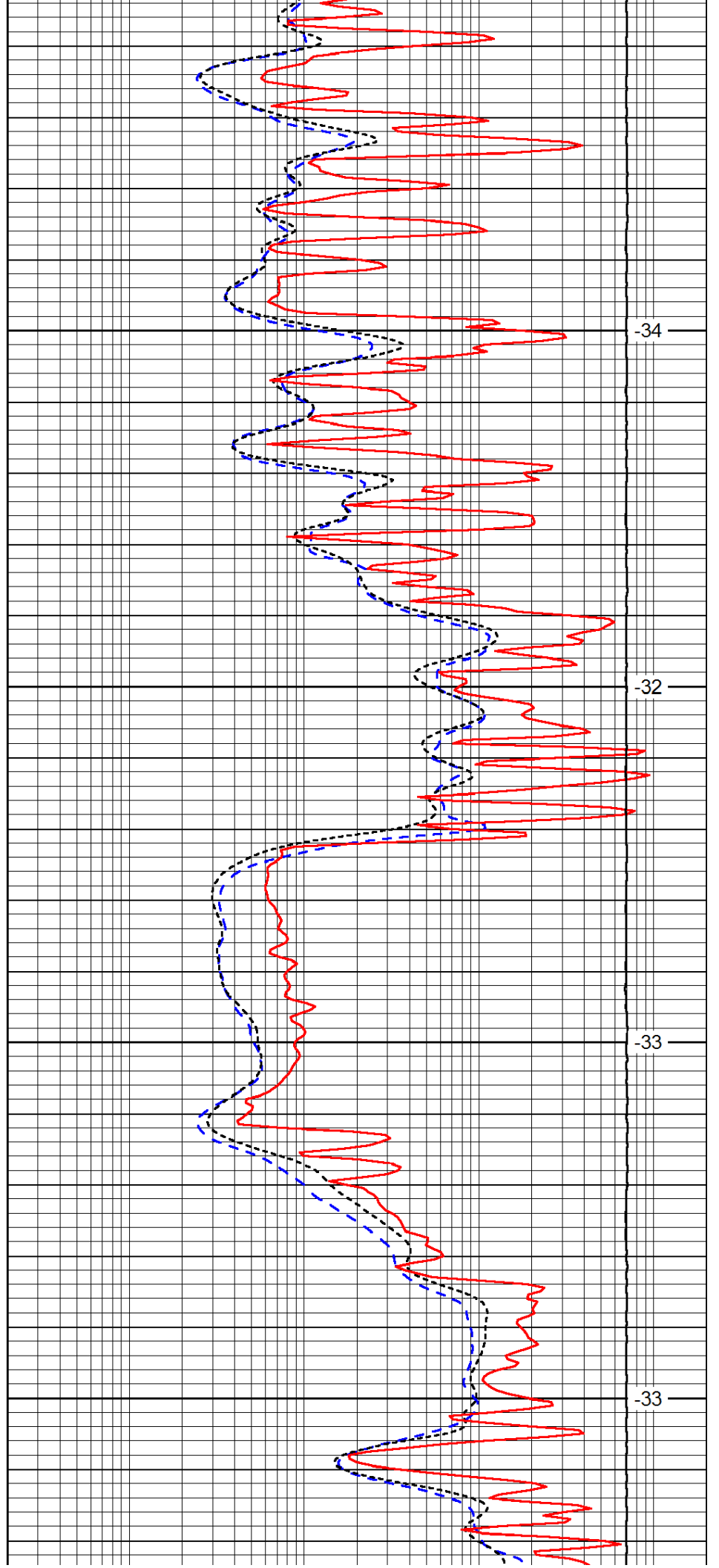


4650

4700

4750

4800

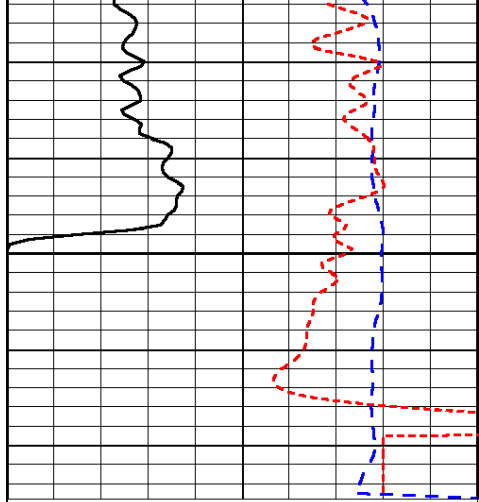


-34

-32

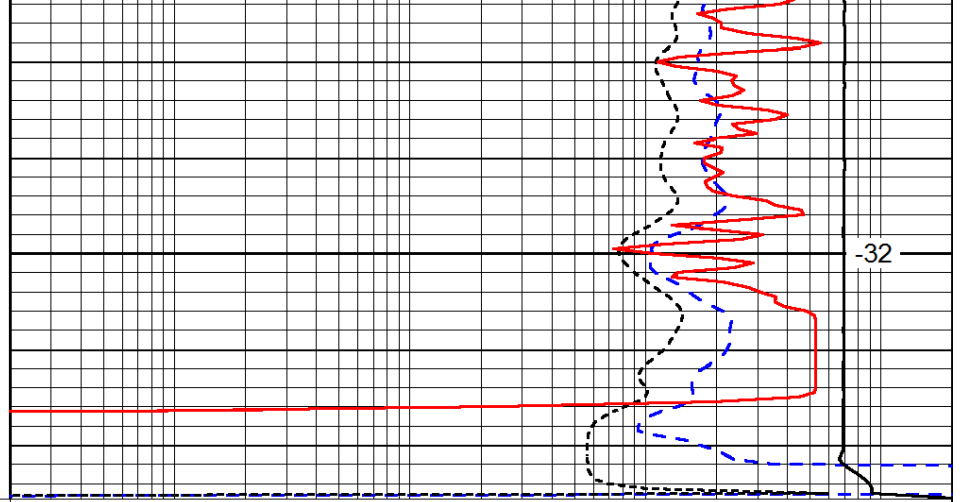
-33

-33



0	Gamma Ray	150
-200	SP (mV)	0
-160	RxoRt	40

4850



-32

0.2	Deep Resistivity	2000
0.2	Medium Resistivity	2000
0.2	Shallow Resistivity	2000
15000	Line Tension	0

LSPD