



Pioneer Energy Services

Microresistivity Log

15-171-21,085-00-00

API No.

Company Val Energy, Inc.

Well Kirk #V 1-7

Field Frick

County Scott

State

Kansas

Location

SW-NW-NE-SE
2260' FSL & 1100' FEL

Sec: 7

Twp: 17S

Rge: 33W

Permanent Datum Ground Level

Kelly Bushing

10 Ft. Above Perm. Datum

Elevation 3084

Drilling Measured From Kelly Bushing

Elevation 3094

D.F. 3084

G.L. 3084

Other Services
CNL/CDL
DIL

Date 9/6/2014

Run Number Two

Depth Driller 4870

Depth Logger 4872

Bottom Logged Interval 4871

Top Log Interval 3500

Casing Driller 8.625 @ 229

Casing Logger 226

Bit Size 7.875

Type Fluid in Hole Chemical

Salinity, ppm CL 6,000

Density / Viscosity 9.0 65

pH / Fluid Loss 9.5 8.8

Source of Sample Flowline

Rm @ Meas. Temp .40 @ 60

Rmf @ Meas. Temp .30 @ 60

Rmc @ Meas. Temp .54 @ 60

Source of Rmf / Rmc Charts

Rm @ BHT .19 @ 125

Operating Rig Time 4 Hours

Max Rec. Temp. F 125

Equipment Number 108

Location Hays

Recorded By J. Hennickson

Witnessed By Harley Sayles

<<< Fold Here >>>

All interpretations are opinions based on inferences from electrical or other measurements and we cannot and do not guarantee the accuracy or correctness of any interpretation, and we shall not, except in the case of gross or willful negligence on our part, be liable or responsible for any loss, costs, damages, or expenses incurred or sustained by anyone resulting from any interpretation made by any of our officers, agents or employees. These interpretations are also subject to our general terms and conditions set out in our current Price Schedule.

Comments

Thank you for using Pioneer Energy Services
www.pioneerres.com
 785 625 3858

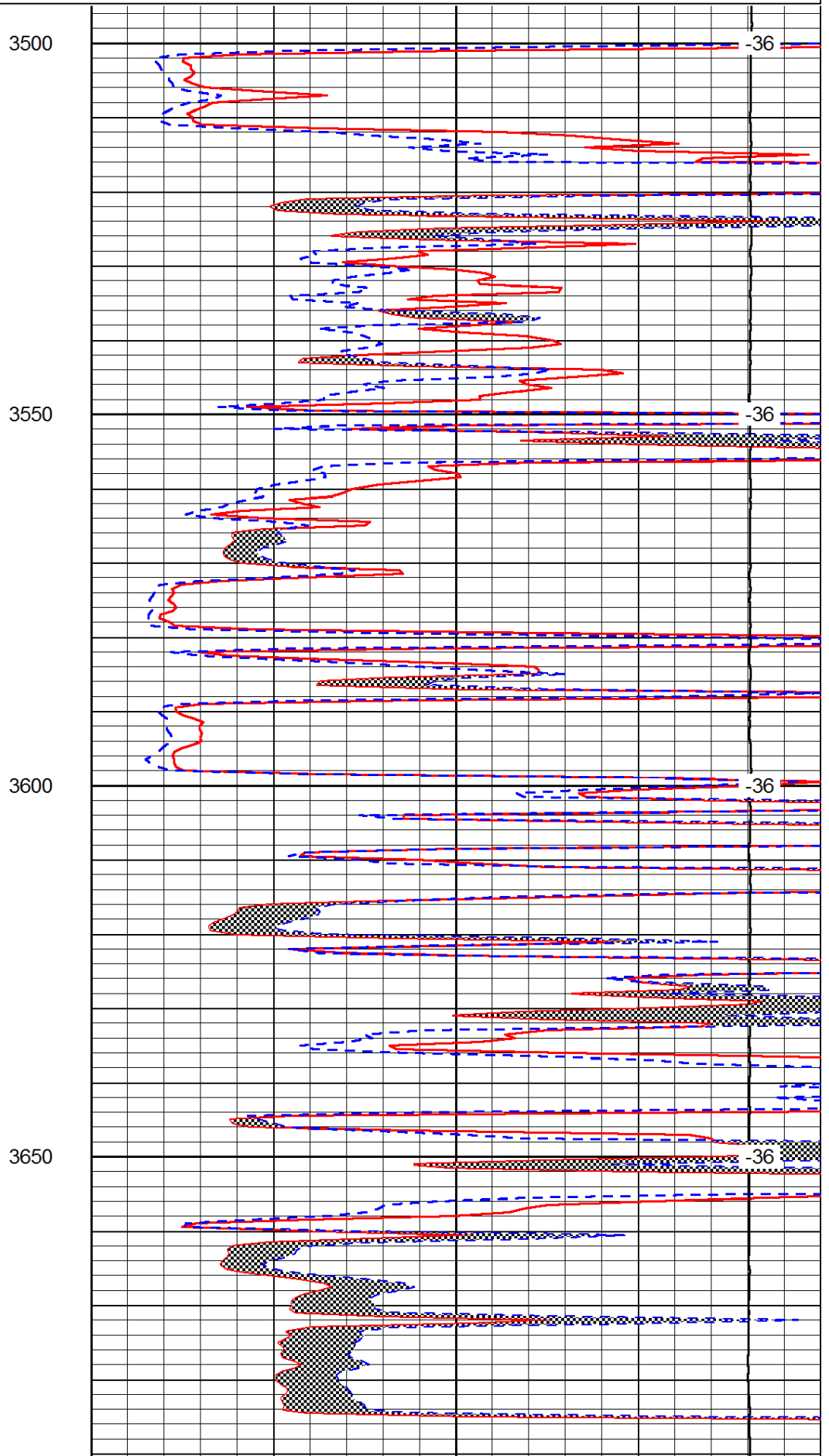
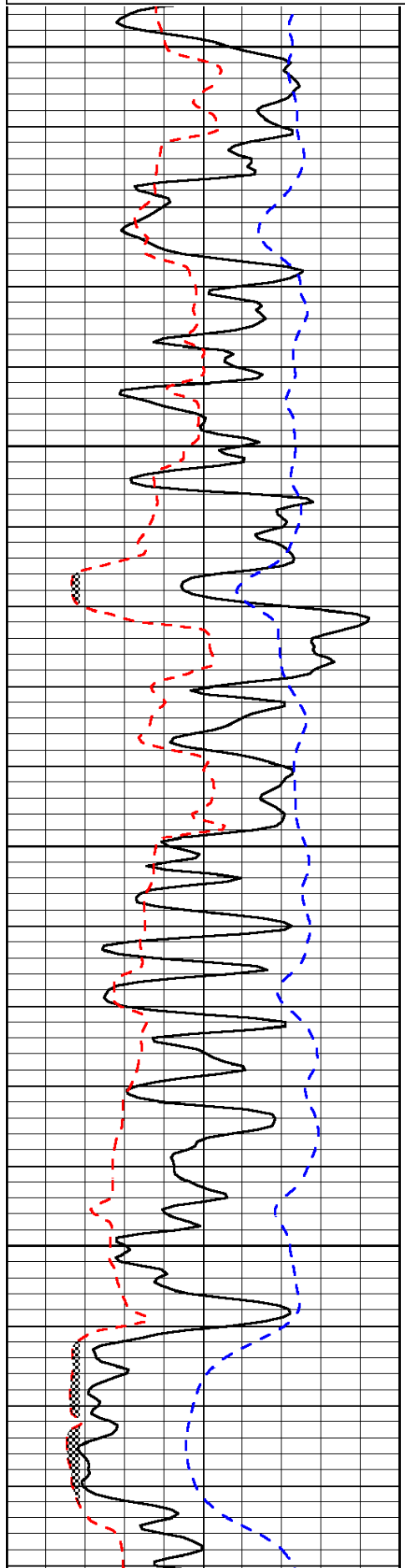
Scott City Kansas
 8 North to HWY 4, 5 West, 1/2 South, West Into

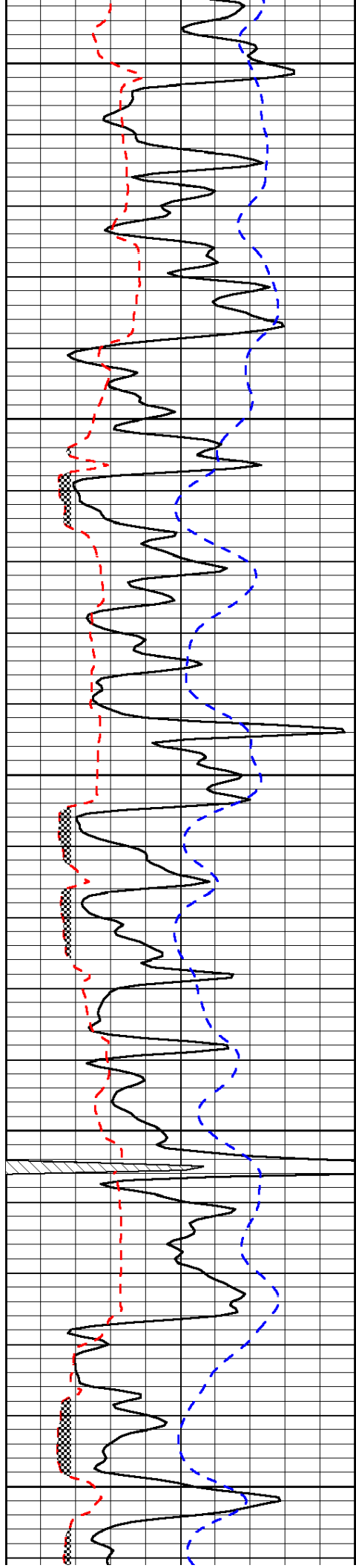
Database File: c:\warrior\data\val_kirk #v 1-7\val_kirk_v1_7hd.db
 Dataset Pathname: DIL\valstk
 Presentation Format: micro
 Dataset Creation: Sat Sep 06 06:55:49 2014
 Charted by: Depth in Feet scaled 1:240

0	Gamma Ray	150
6	Micro Log Caliper (GAPI)	16
-200	SP (mV)	0

0	Micro Inverse 1 X 1	40
0	Micro Normal 2"	40
15000	Line Weight	0

LSPD





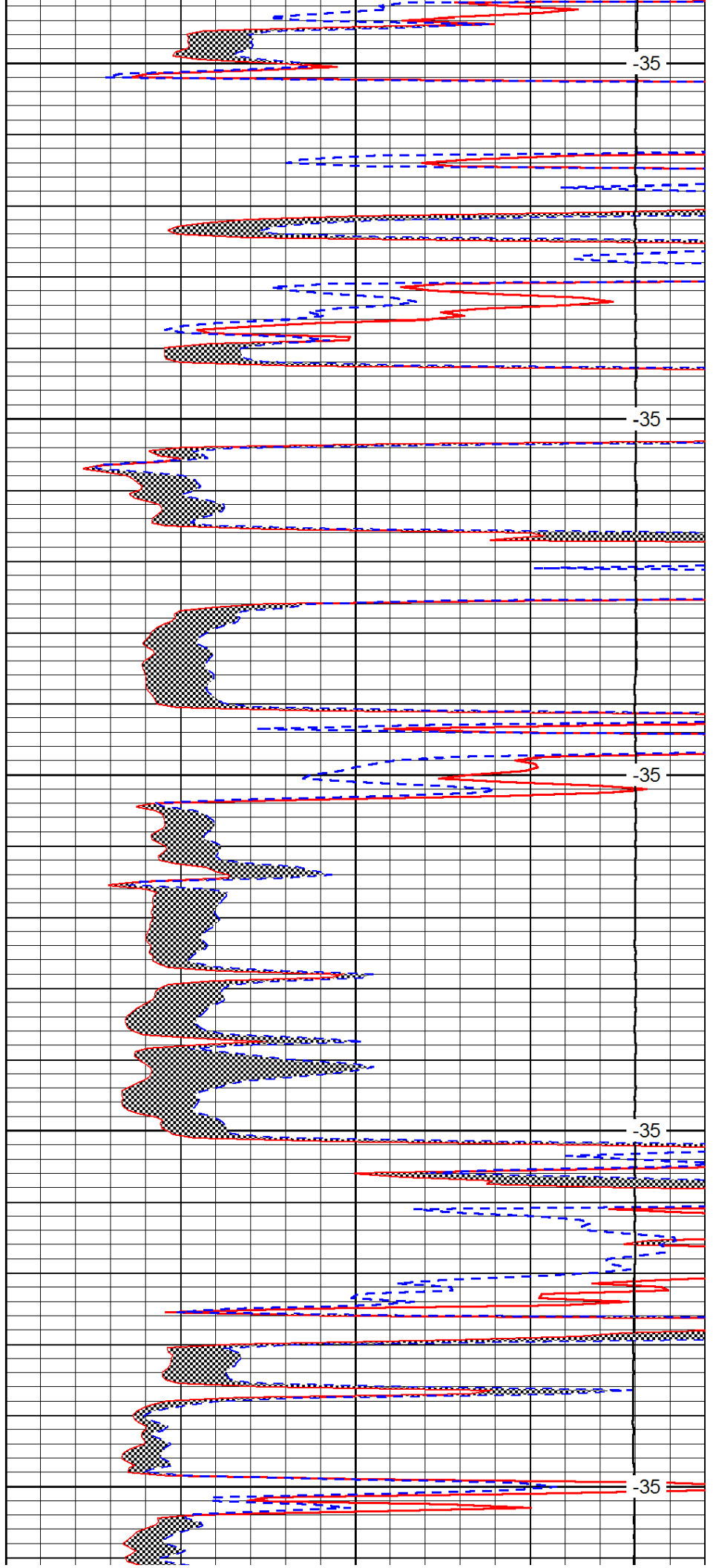
3700

3750

3800

3850

3900



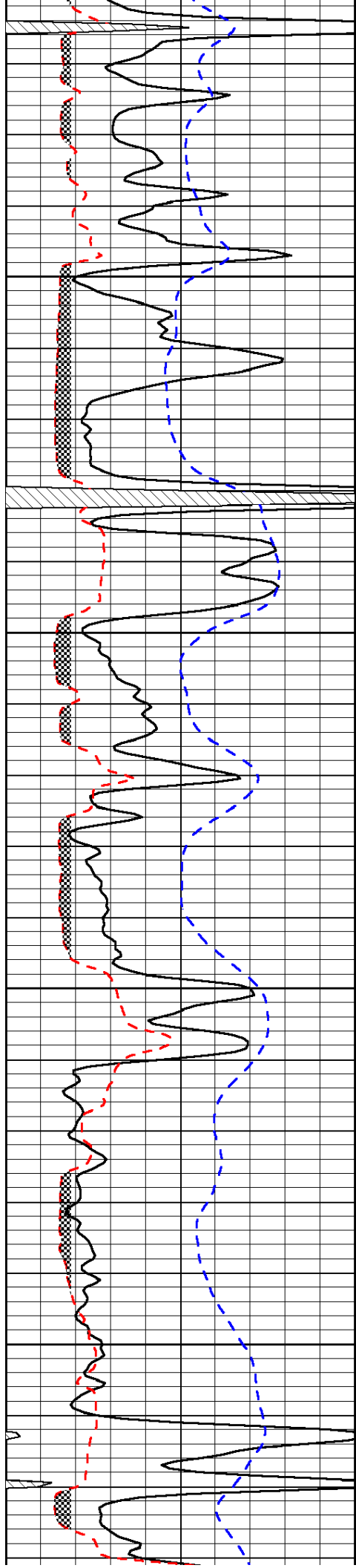
-35

-35

-35

-35

-35

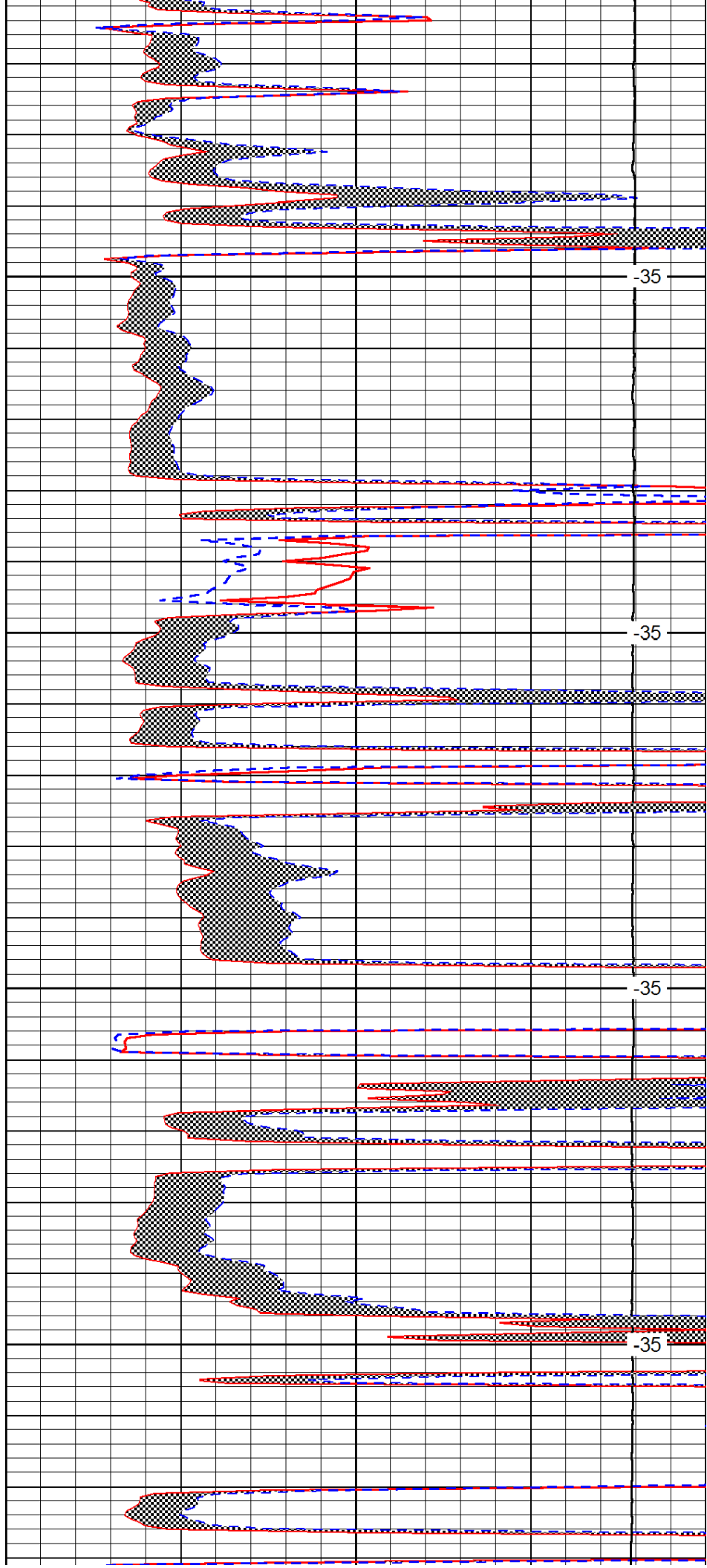


3950

4000

4050

4100

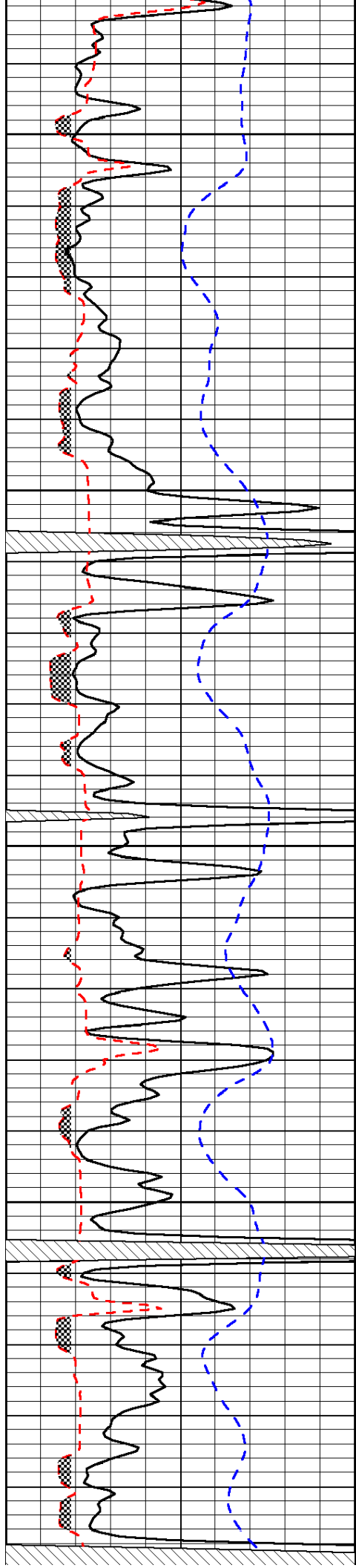


-35

-35

-35

-35



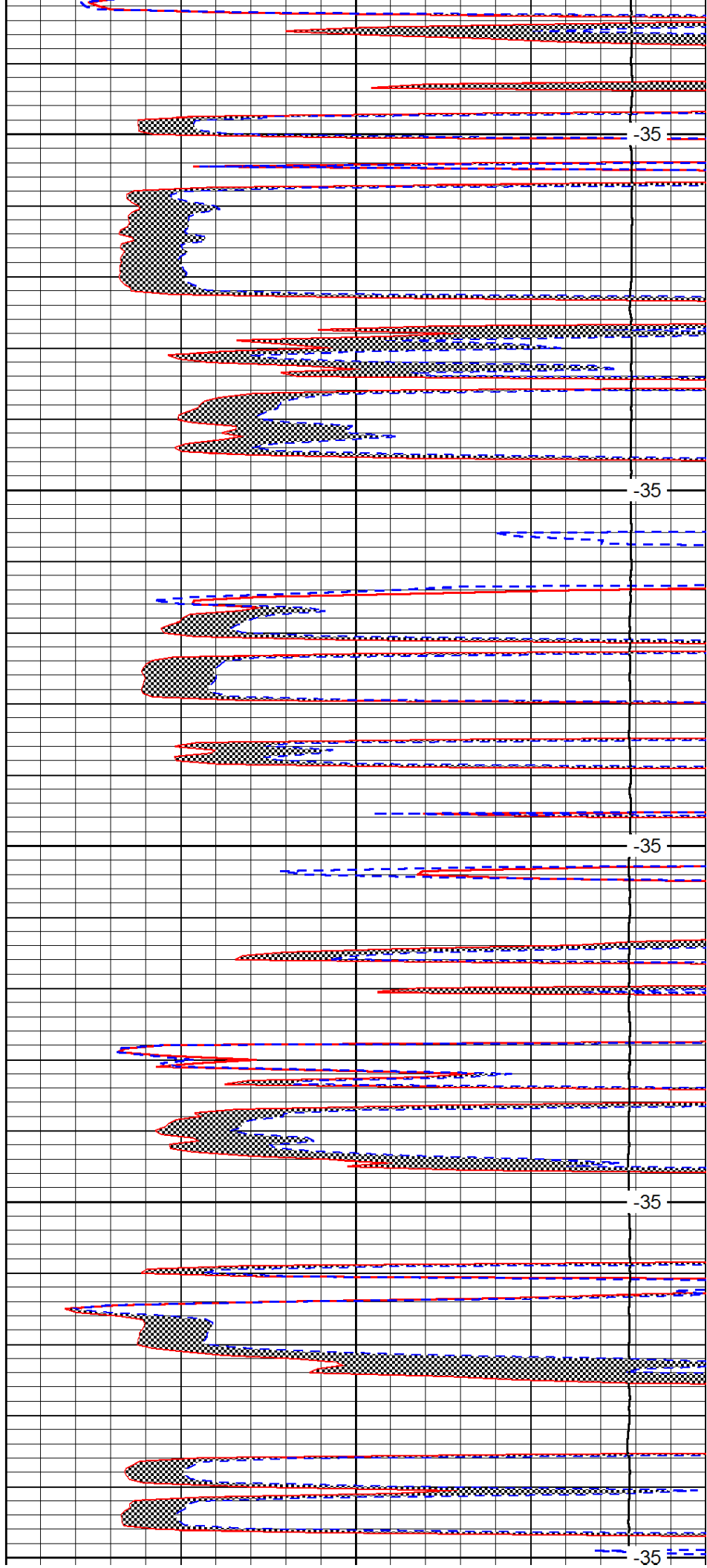
4150

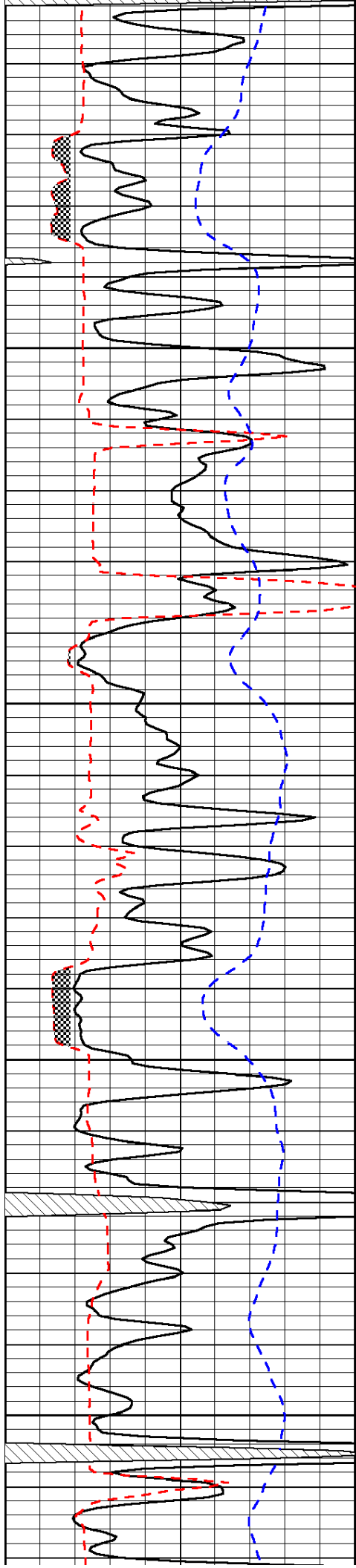
4200

4250

4300

4350



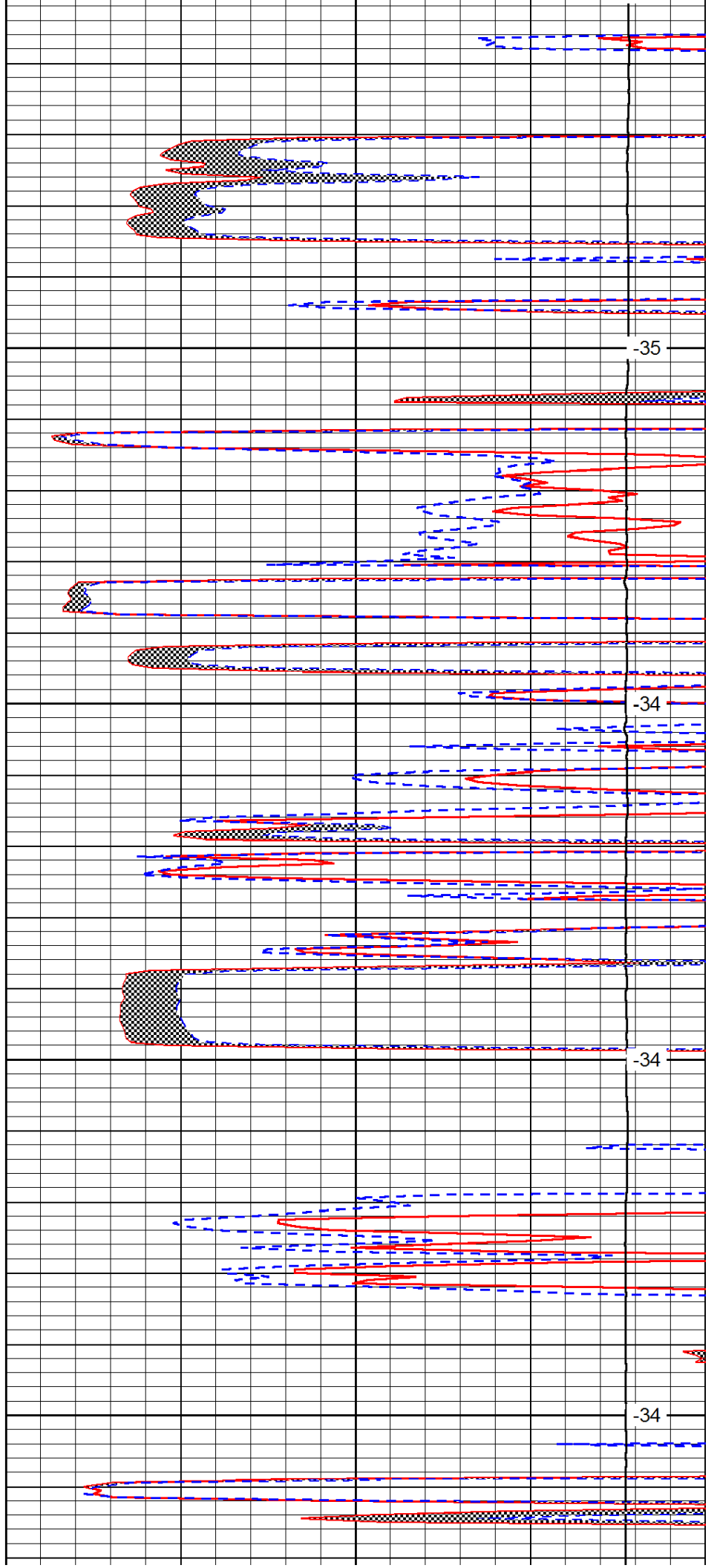


4400

4450

4500

4550

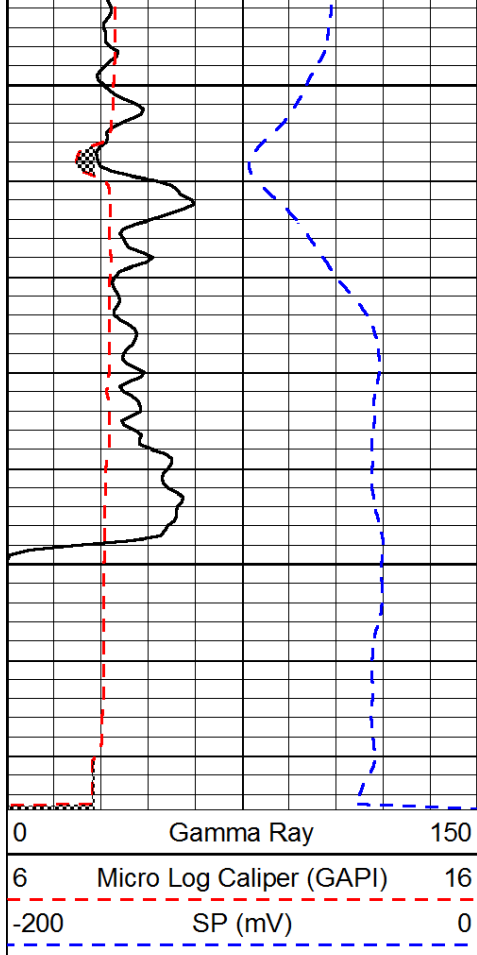


-35

-34

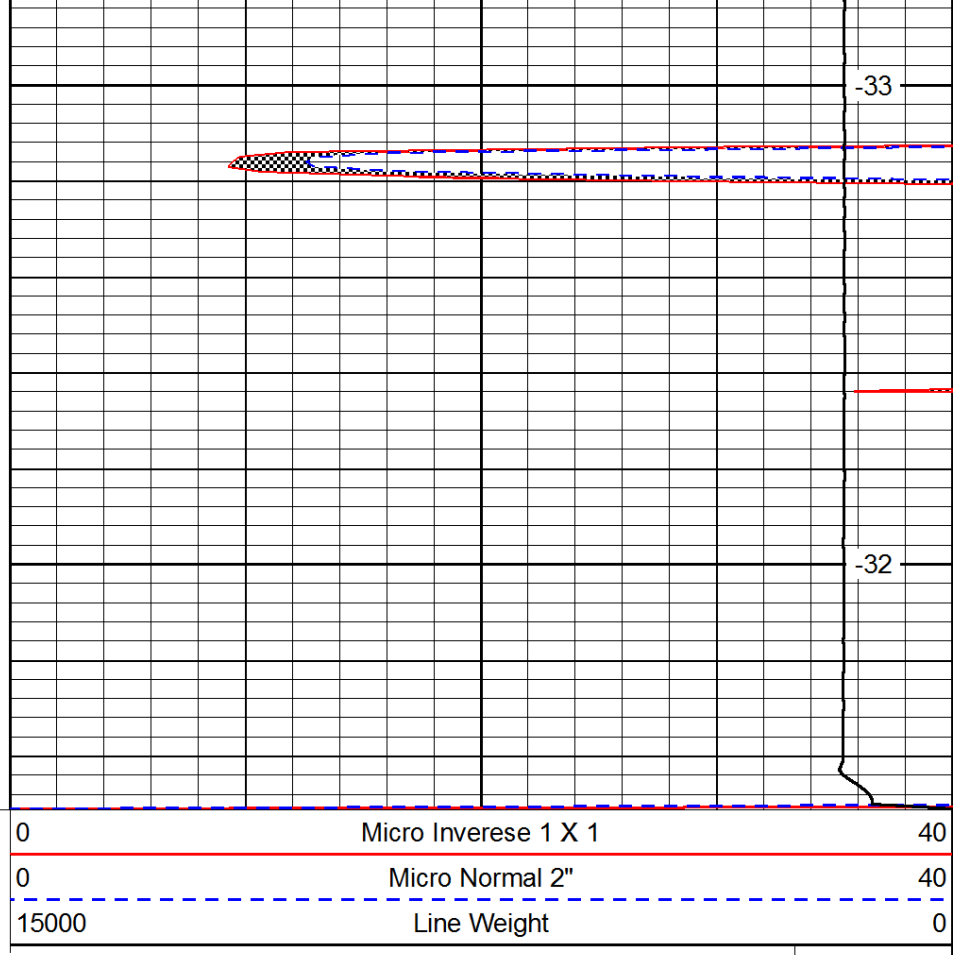
-34

-34



4800

4850



-33

-32

LSPD