



**GAMMA RAY
NEUTRON
CEMENT BOND
COMPLETION LOG**

Company DAYSTAR PETROLEUM, INC.
Well NORDMEYER #37-14
Field
County WOODSON
State KANSAS

Company DAYSTAR PETROLEUM, INC.
Well NORDMEYER #37-14
Field
County WOODSON State KANSAS

Location: API # : 15-207-28908-00-00
2145FNL & 1155FWL

SEC 30 TWP 25S RGE 14E

Permanent Datum	GL	Elevation	984'
Log Measured From	G;		
Drilling Measured From	GL	Elevation	G.L. 984'

Date	6-13-2014
Run Number	1 NW
Depth Driller	
Depth Logger	1341.8'
Top Log Interval	0
Bottom Logged Interval	1341.8'
Fluid Level	FULL
Type Fluid	WATER
Production Casing	2 7/8" @ TD
Max. Recorded Temp.	@
Estimated Cement Top	
Calculated Cement Top	
Amount & Type Cement	
Amount & Type Admix	
Drilling Contractor	
Equipment Number	109
Location	
Recorded By	GORMLEY, R.
Witnessed By	WESCOTT, J.

<<< Fold Here >>>

All interpretations are opinions based on inferences from electrical or other measurements and we cannot and do not guarantee the accuracy or correctness of any interpretation, and we shall not, except in the case of gross or willful negligence on our part, be liable or responsible for any loss, costs, damages, or expenses incurred or sustained by anyone resulting from any interpretation made by any of our officers, agents or employees. These interpretations are also subject to our general terms and conditions set out in our current Price Schedule.

Comments

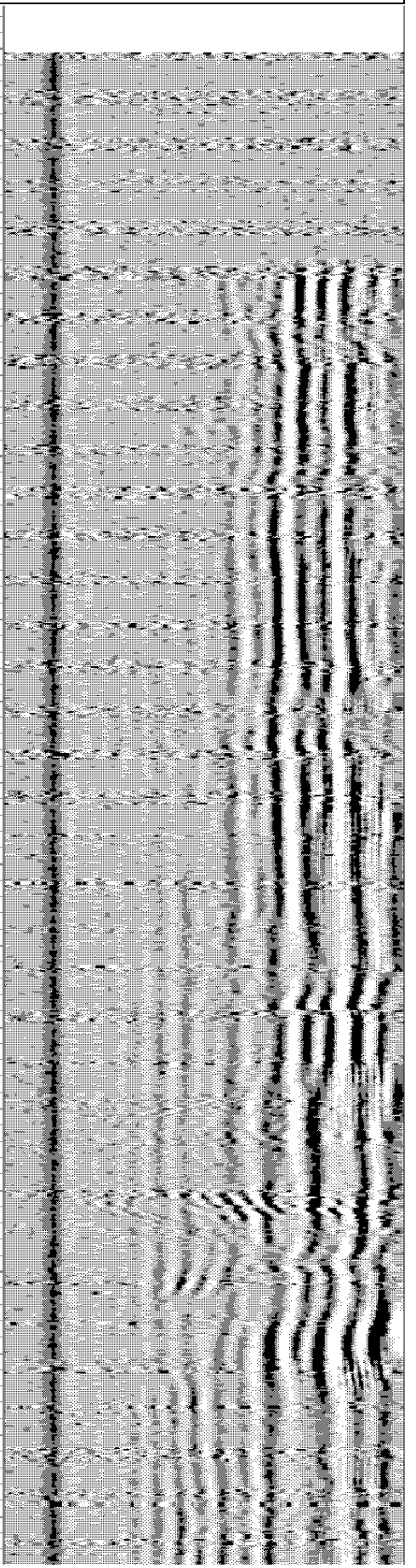
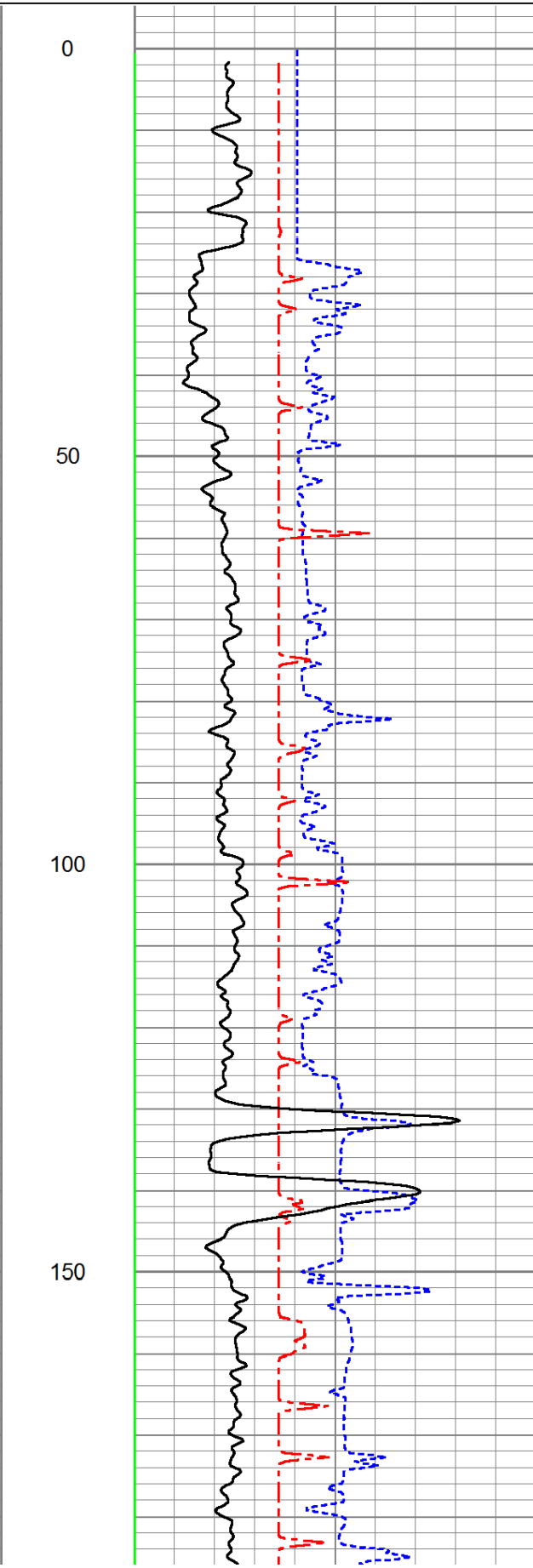
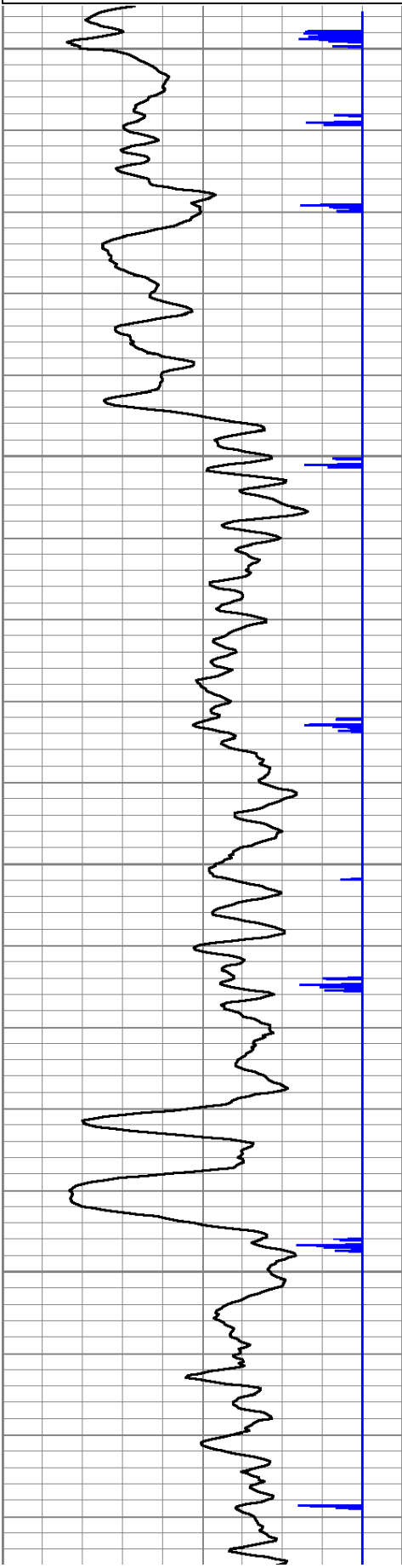
THANK YOU

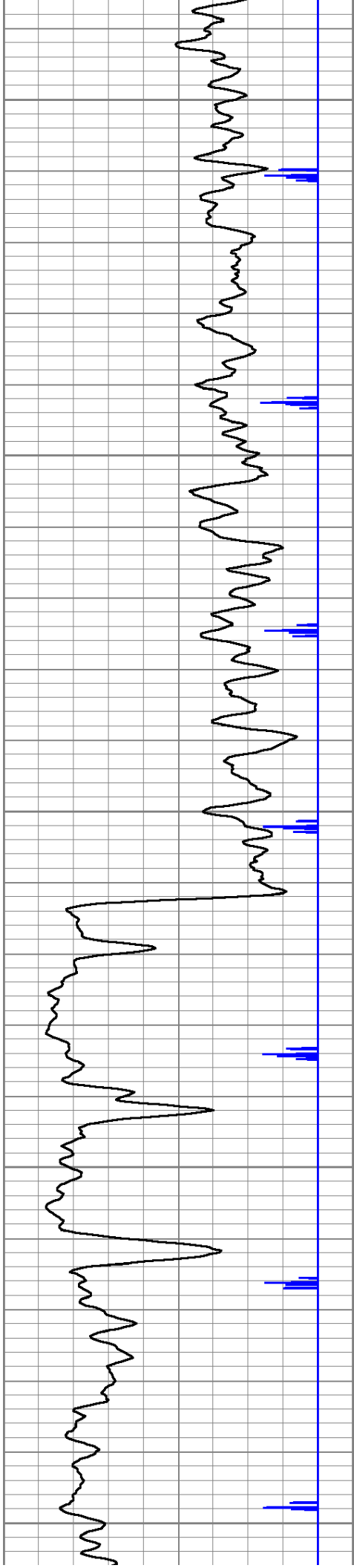
Sensor	Offset (ft)	Schematic	Description	Len (ft)	OD (in)	Wt (lb)

0	Gamma Ray	150
150	gr	300
9	CCL	-1

0	AMP3FT (mV)	100
1200	TT3FT (usec)	200
1800	TT5FT (usec)	200
0	NEU (cps)	1500

200	VDL	1200
-----	-----	------





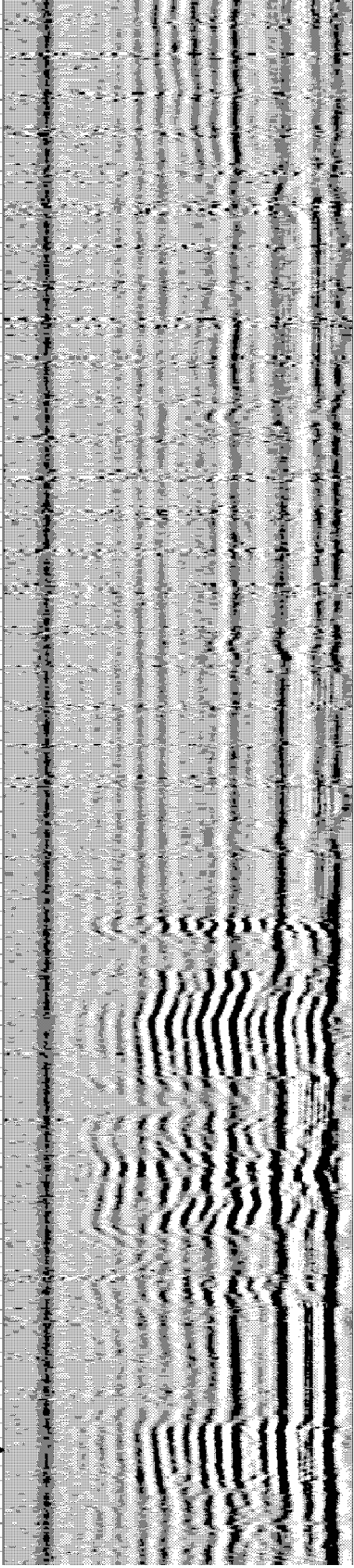
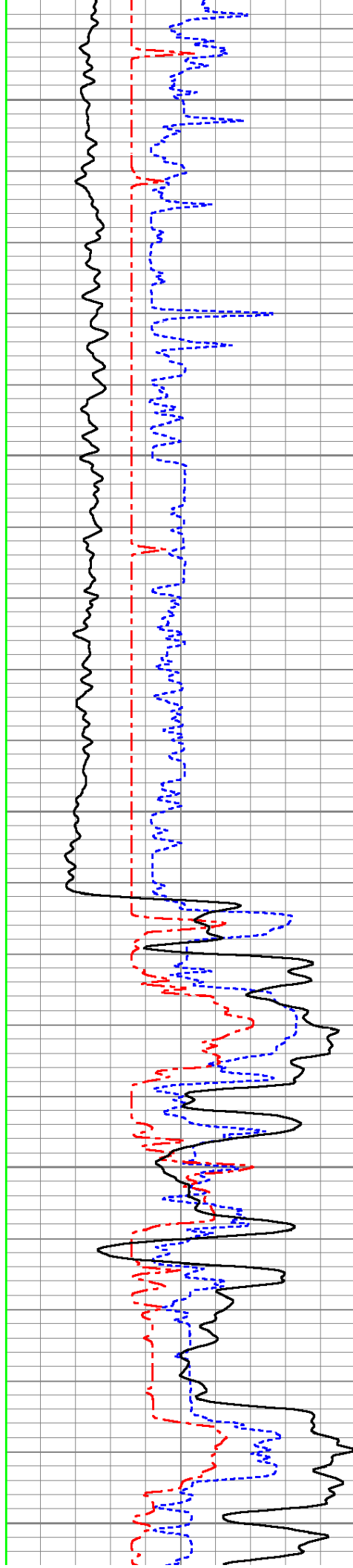
200

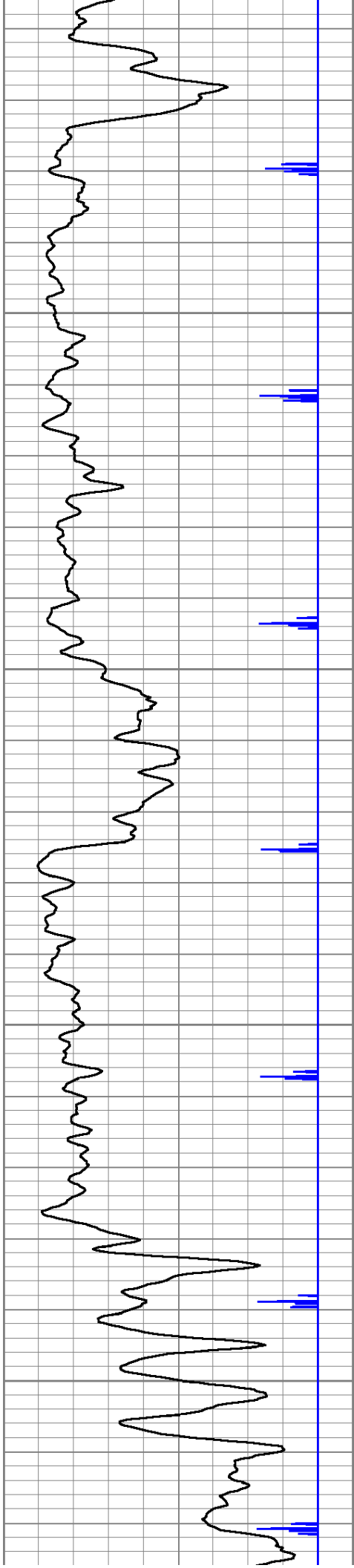
250

300

350

400



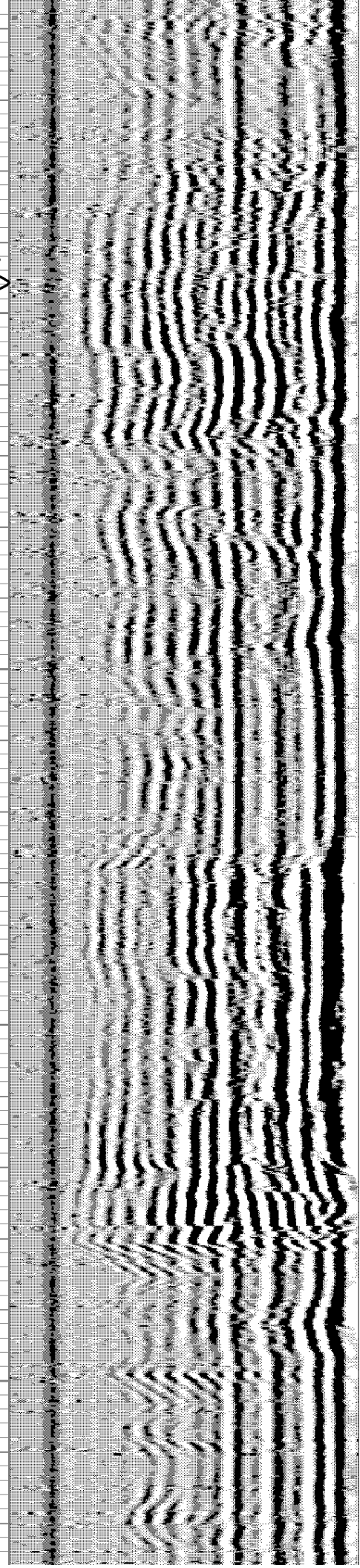
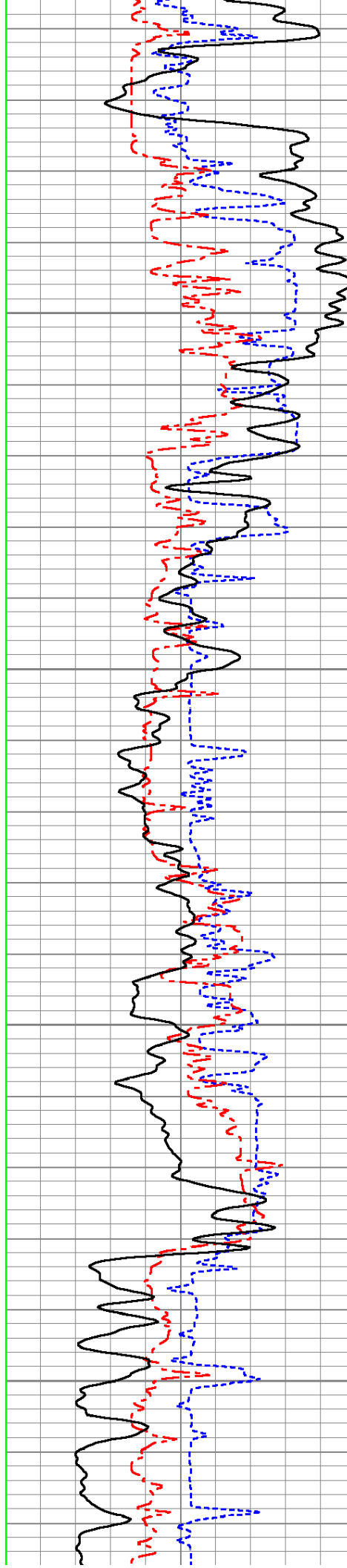


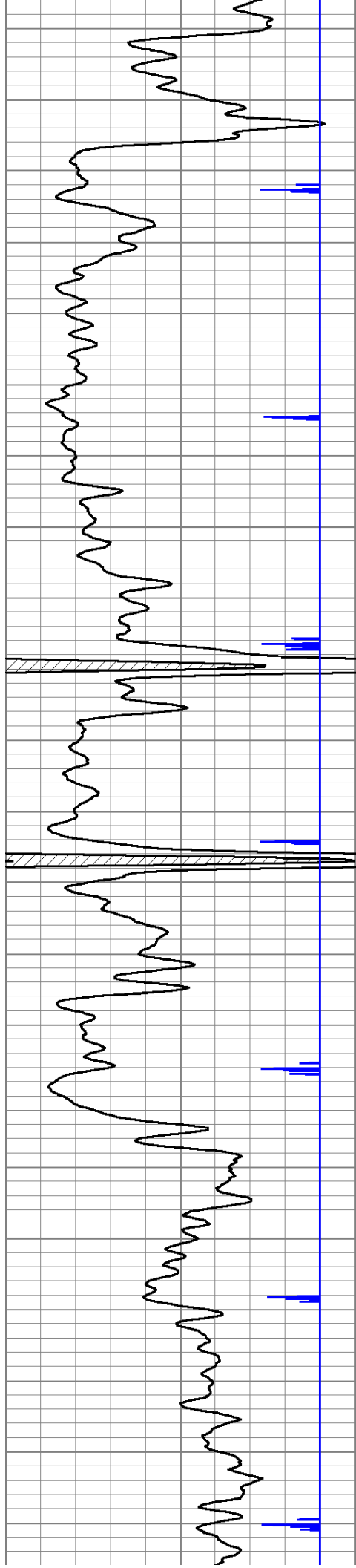
450

500

550

600



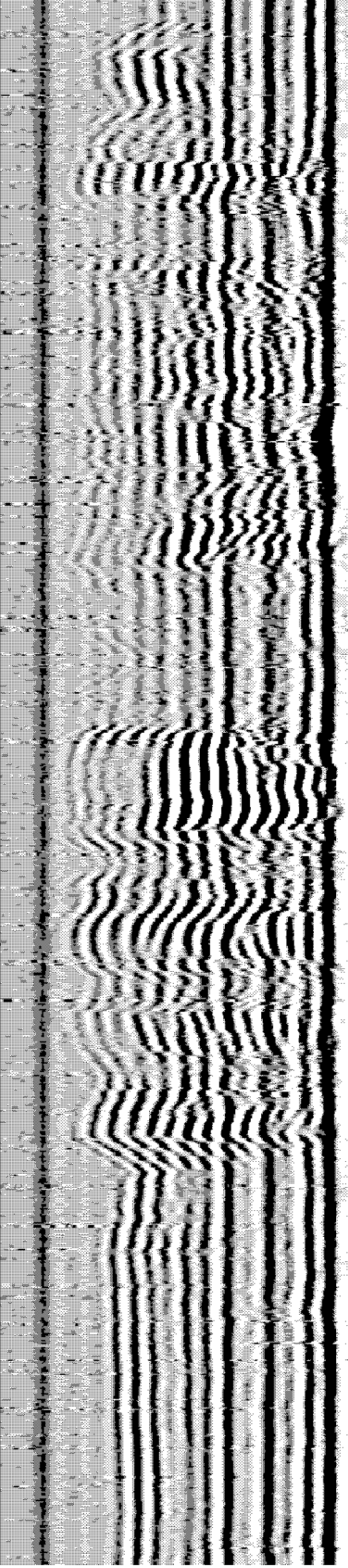
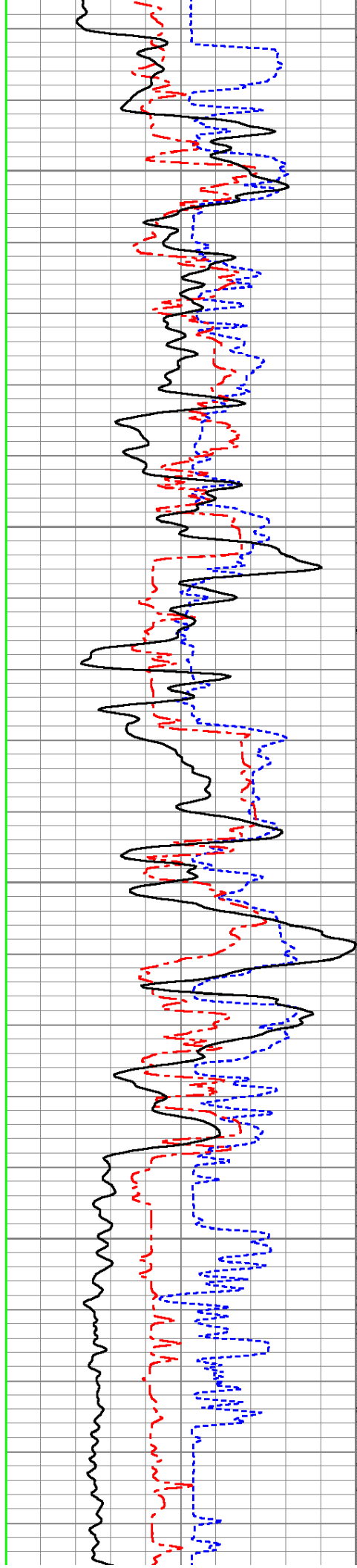


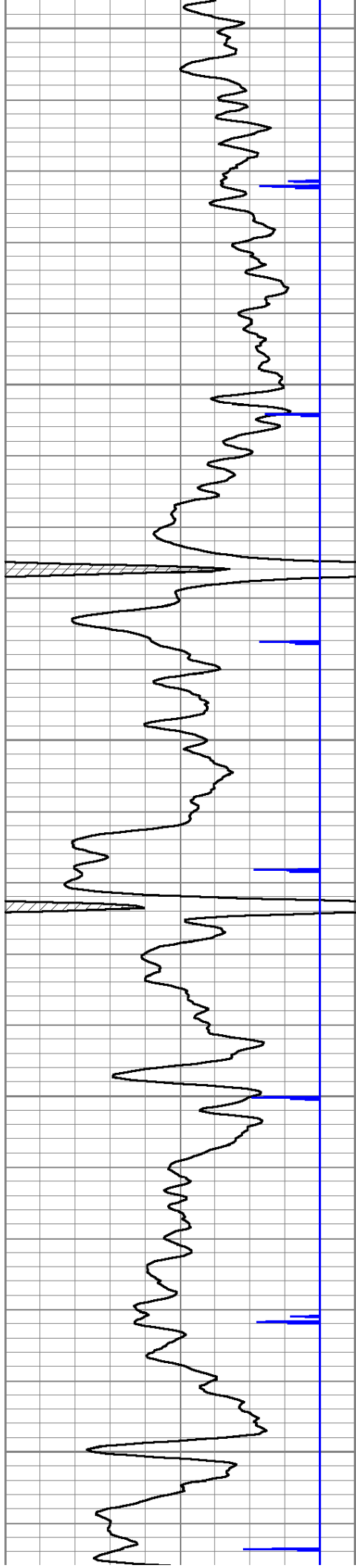
650

700

750

800





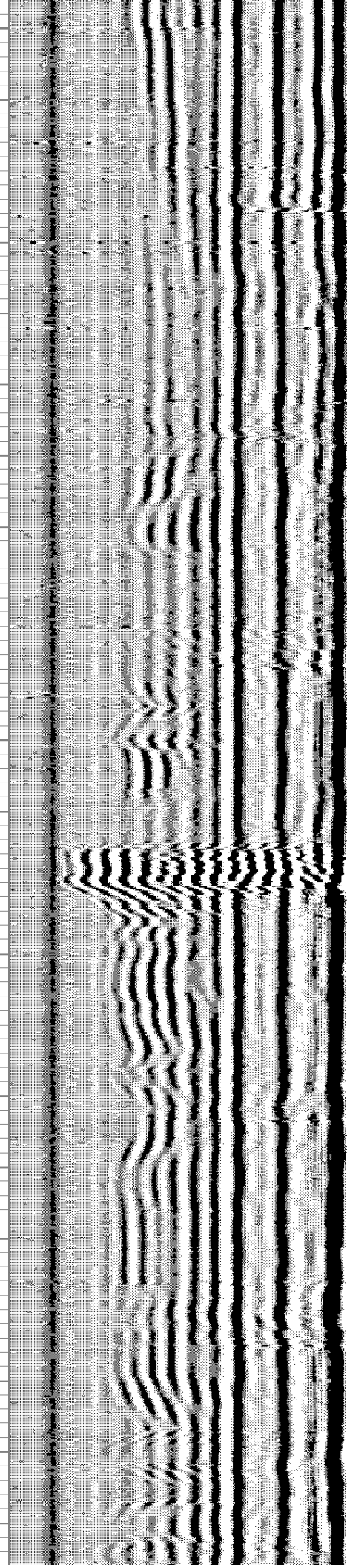
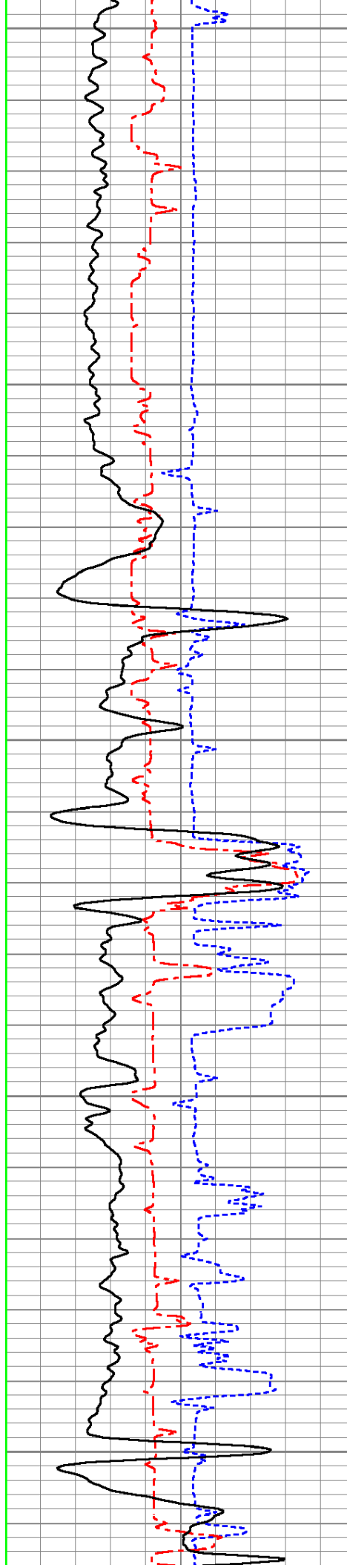
850

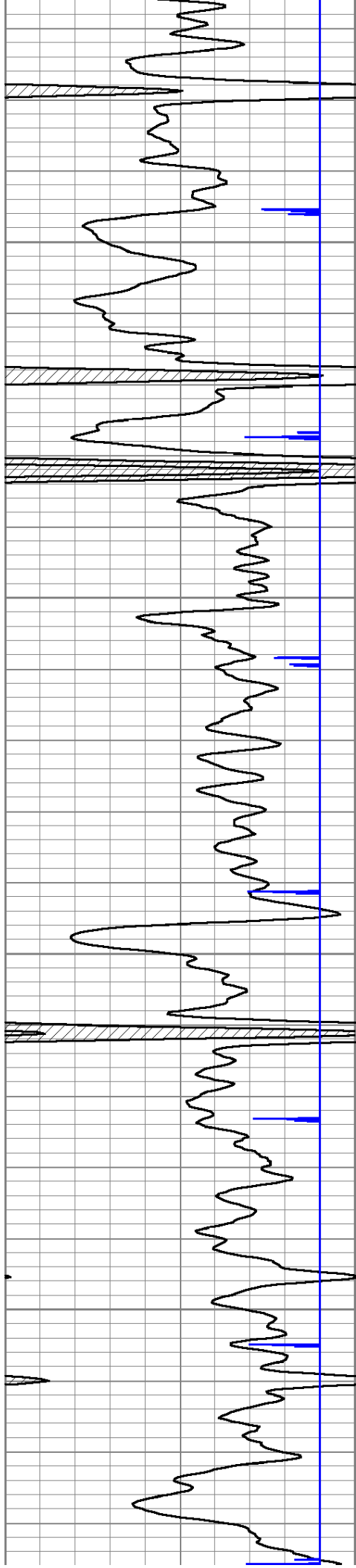
900

950

1000

1050



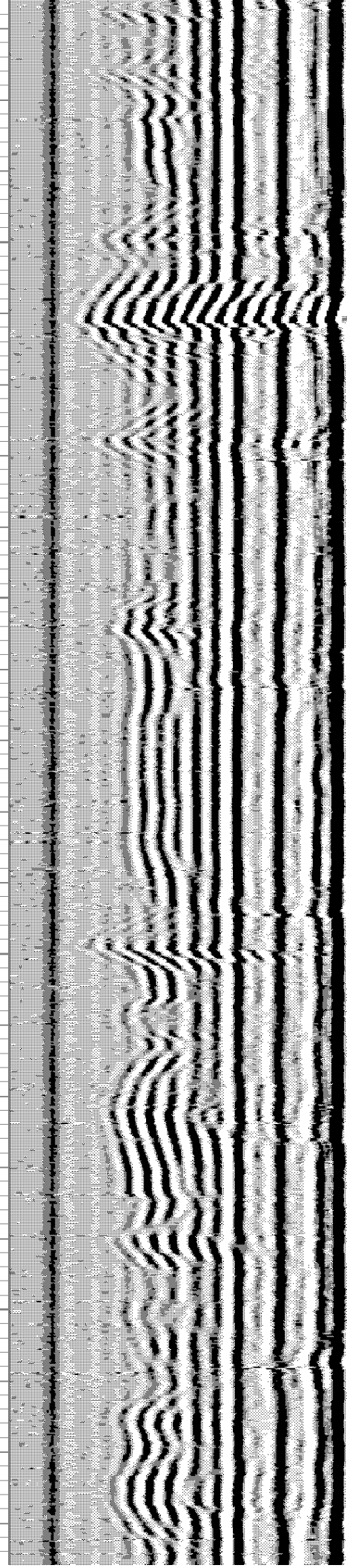
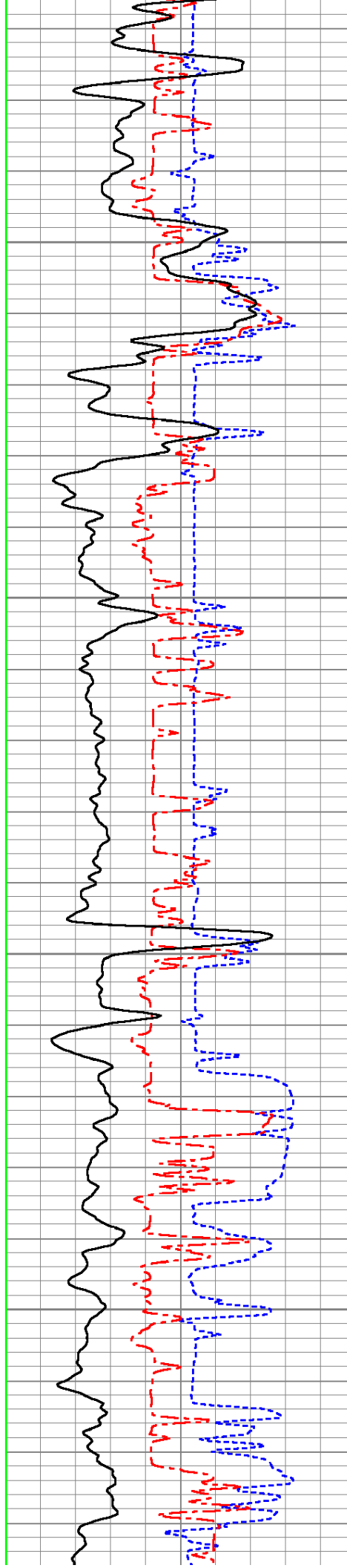


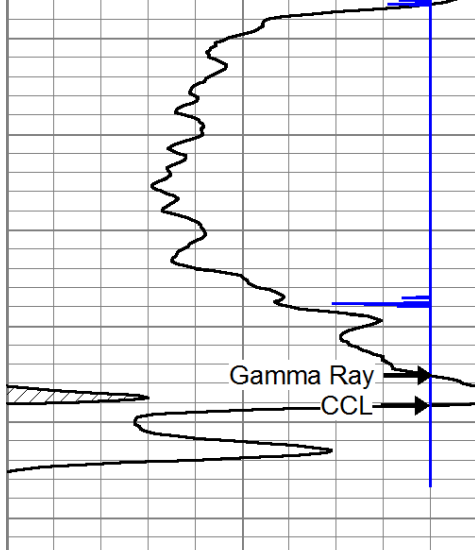
1100

1150

1200

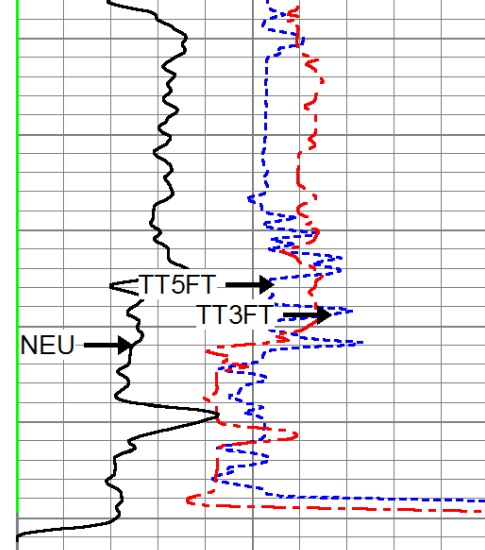
1250



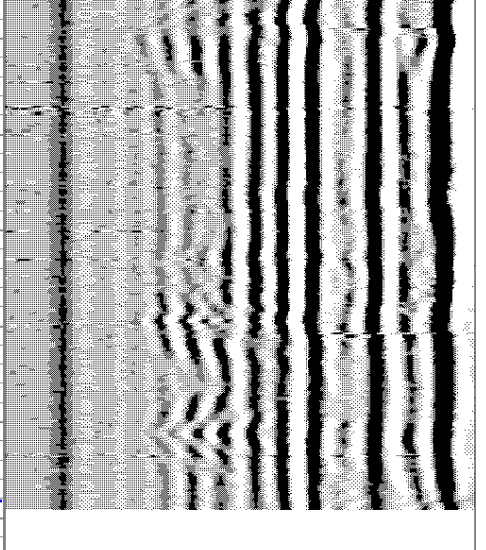


0	Gamma Ray	150
150	gr	300
9	CCL	-1

1300



0	AMP3FT (mV)	100
1200	TT3FT (usec)	200
1800	TT5FT (usec)	200
0	NEU (cps)	1500



200	VDL	1200
-----	-----	------



Company DAYSTAR PETROLEUM, INC.
 Well NORDMEYER #37-14
 Field
 County WOODSON SECTION 30 TWP 25S RGE 14E
 State KANSAS Date 6-13-2014