



**MIDWEST SURVEYS**  
 LOGGING - PERFORATING - CONSULTING SERVICES  
 P.O. Box 68, Osawatomie, KS 66064  
 913.755.2128

**GAMMA RAY / NEUTRON / CCL**

File No.

Company Legend Oil & Gas, Ltd  
 Well Patrick Collins No. - 20

Field Humboldt - Chanute  
 County Woodson State Kansas

Location 1815' FSL & 1485' FEL  
 NE-SE-NW-SE

Sec. 17 Typ. 25s Rge. 17e  
 Permanent Datum GL Elevation NA  
 Log Measured From GL  
 Drilling Measured From GL

Date 09-12-2014  
 Run Number One  
 Depth Driller 894.0  
 Bottom Logged Interval 873.0  
 Top Log Interval 20.0  
 Fluid Level Full

Type Fluid Water  
 Density / Viscosity NA  
 Salinity - PPM Cl NA  
 Max. Recorded Temp NA  
 Estimated Cement Top 0.0  
 Equipment No. Location 167 Osawatomie  
 Recorded By Steve Winkler  
 Witnessed By Marshall Diamond-Galbraith

BORE-HOLE RECORD  
 No. BIT TO SIZE TO  
 One 12.25" 0.0 8.825" 22.0# 0.0 20.0  
 Two 5.575" 20.0 894.0 2.875" 6.5# 0.0 879.0

CASING RECORD  
 TO FROM TO FROM TO  
 20.0 0.0 20.0 0.0 879.0

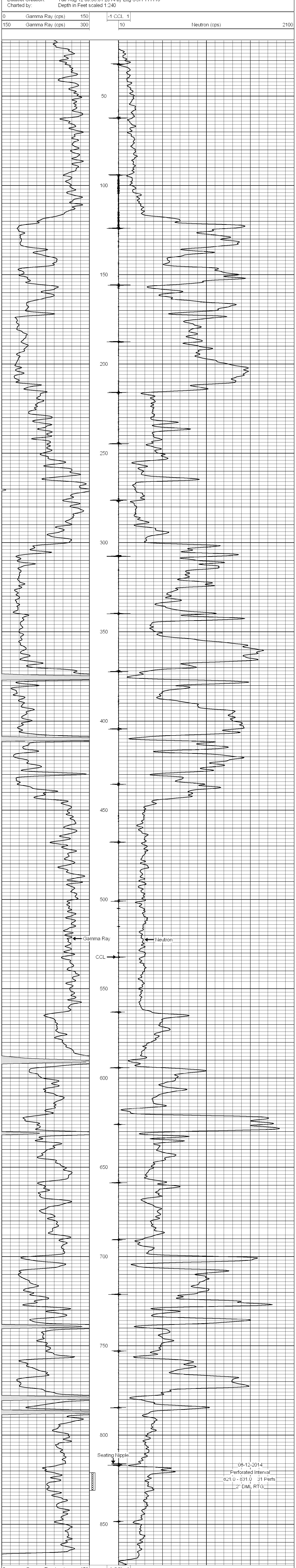
<<< Fold Here >>>

All interpretations are opinions based on inferences from electrical or other measurements and we cannot and do not guarantee the accuracy or correctness of any interpretation, and we shall not, except in the case of gross or willful negligence on our part, be liable or responsible for any loss, costs, damages, or expenses incurred or sustained by anyone resulting from any interpretation made by any of our officers, agents or employees. These interpretations are also subject to our general terms and conditions set out in our current Price Schedule.

Comments

Drilling Contractor :  
 WoCo Drilling, LLC

Database File: pat collins20.db  
 Dataset Pathname: pass1  
 Presentation Format: gr-n-ccl  
 Dataset Creation: Tue Aug 12 09:56:01 2014 by Log SCH 111116  
 Charted by: Depth in Feet scaled 1:240



08-12-2014  
 Perforated Interval  
 821.0 - 831.0 31 Perfs  
 2" DML RTG

