



MIDWEST SURVEYS
 LOGGING - PERFORATING - CONSULTING SERVICES
 P.O. Box 68, Ocala, Florida, KS 68084
 913.755.2128

GAMMA RAY / NEUTRON / CCL

File No. _____

Company Legend Oil & Gas, Ltd

Well Patrick Collins No. - 19

Field Humboldt - Chanute

County Woodson State Kansas

Location _____

1815' FSL & 1155' FEL

NW-SW-NE-SE

Sec. 17 Twp. 25S Rge. 17E

Permament Datum Log Measured From Drilling Measured From

GL GL GL

Elevation K.B. NA D.F. NA G.L. NA

Date 08-12-2014

Run Number One

Depth Driller 893.0

Bottom Logged Interval 872.0

Top Log Interval 20.0

Fluid Level _____

Fluid Level _____

Type Fluid Water

Density / Viscosity NA NA

Salinity - PPM Cl NA NA

Max. Recorded Temp NA NA

Estimated Cement Top 0.0

Equipment No. Location 107 Osawatimie

Recorded By Steve Mandich

Missused By Marshall Diamond-Galbraith

BORE-HOLE RECORD

NO. BIT TO SIZE WGT. FROM TO

One 12.25" 20.0 8.825" 22.0# 0.0

Two 5.575" 20.0 893.0 2.875" 6.5# 0.0

CASING RECORD

TO 20.0

877.0

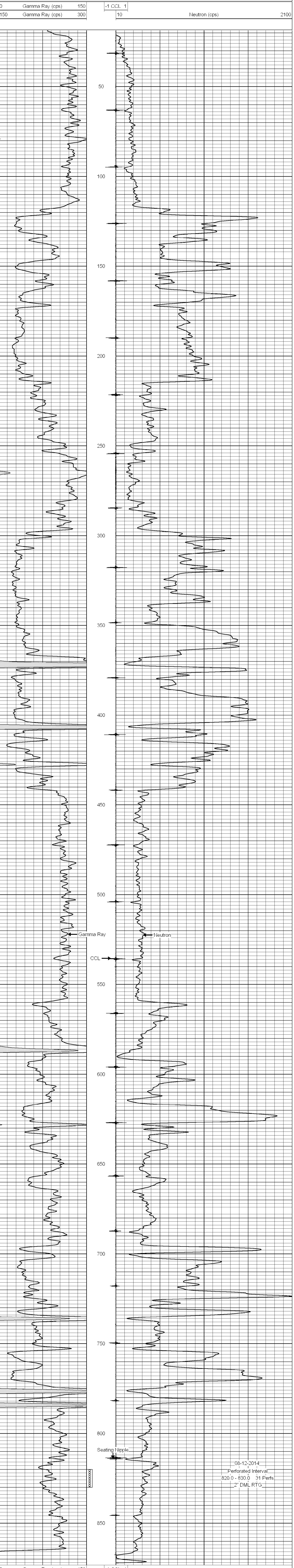
<<< Fold Here >>>

All interpretations are opinions based on inferences from electrical or other measurements and we cannot and do not guarantee the accuracy or correctness of any interpretation, and we shall not, except in the case of gross or willful negligence on our part, be liable or responsible for any loss, costs, damages, or expenses incurred or sustained by anyone resulting from any interpretation made by any of our officers, agents or employees. These interpretations are also subject to our general terms and conditions set out in our current Price Schedule.

Comments

Drilling Contractor :
 WoCo Drilling, LLC

Database File: pat collins19.db
 Dataset Pathname: pass1
 Presentation Format: gr-n-ccl
 Dataset Creation: Tue Aug 12 10:41:36 2014 by Log SCH 111116
 Charted by: Depth in Feet scaled 1:240



08-12-2014
 Perforated Interval
 820.0 - 830.0 31 Perfs
 2" DML RTG