

**COMPLETION  
& PRODUCTION  
SERVICES CO.**

**DUAL  
INDUCTION  
LOG**

Company TREK AEC, INC.  
Well DRISCOLL #2  
Field GIDEON  
County RUSSELL State KANSAS

Company TREK AEC, INC.  
Well DRISCOLL #2  
Field GIDEON  
County RUSSELL  
State KANSAS

Location: API #: 15-167-23968  
1000' FNL & 1420' FEL  
SEC 8 TWP 15S RGE 14W  
Permanent Datum GROUND LEVEL Elevation 1828  
Log Measured From KELLY BUSHING 5' A.G.L.  
Drilling Measured From KELLY BUSHING  
Other Services  
CDL/CNL  
MICRO  
Elevation  
K.B. 1833  
D.F.  
G.L. 1828

Date	6-27-14
Run Number	ONE
Depth Driller	3320
Depth Logger	3321
Bottom Logged Interval	3319
Top Log Interval	00
Casing Driller	471
Casing Logger	471
Bit Size	7.875
Type Fluid in Hole	CHEMICAL MUD
Density / Viscosity	9.2 / 60
pH / Fluid Loss	10.0 / 13.2
Source of Sample	FLOWLINE
Rim @ Meas. Temp	0.40 @ 85F
Rmf @ Meas. Temp	0.30 @ 85F
Rmc @ Meas. Temp	0.48 @ 85F
Source of Rmf / Rmc	FLOWLINE
Rim @ BHT	310 @ 108F
Time Circulation Stopped	2 HOURS
Time Logger on Bottom	1:15 P.M.
Maximum Recorded Temperature	108F
Equipment Number	860
Location	HAYS, KS.
Recorded By	RUPP
Witnessed By	AARON YOUNG

<<< Fold Here >>>

All interpretations are opinions based on inferences from electrical or other measurements and we cannot and do not guarantee the accuracy or correctness of any interpretation, and we shall not, except in the case of gross or willful negligence on our part, be liable or responsible for any loss, costs, damages, or expenses incurred or sustained by anyone resulting from any interpretation made by any of our officers, agents or employees. These interpretations are also subject to our general terms and conditions set out in our current Price Schedule.

Comments

NABORS COMPLETION & PRODUCTION SERVICES  
785-628-6395  
THANK YOU FOR YOUR BUSINESS  
DIRECTIONS: RUSSELL, 6S TO RIVER BRIDGE, 2W ON WALTERS LANE, 1S, W INTO.

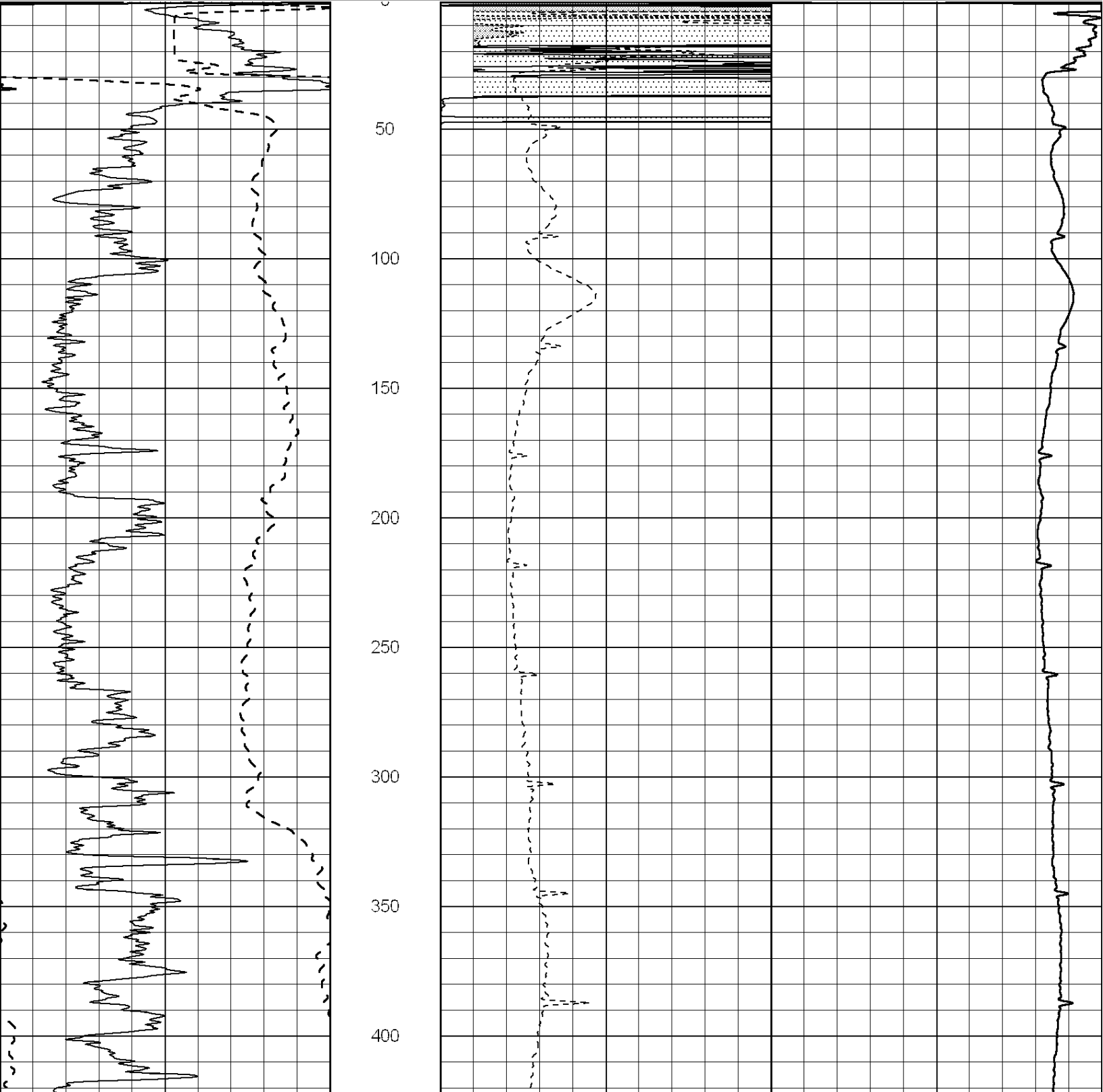


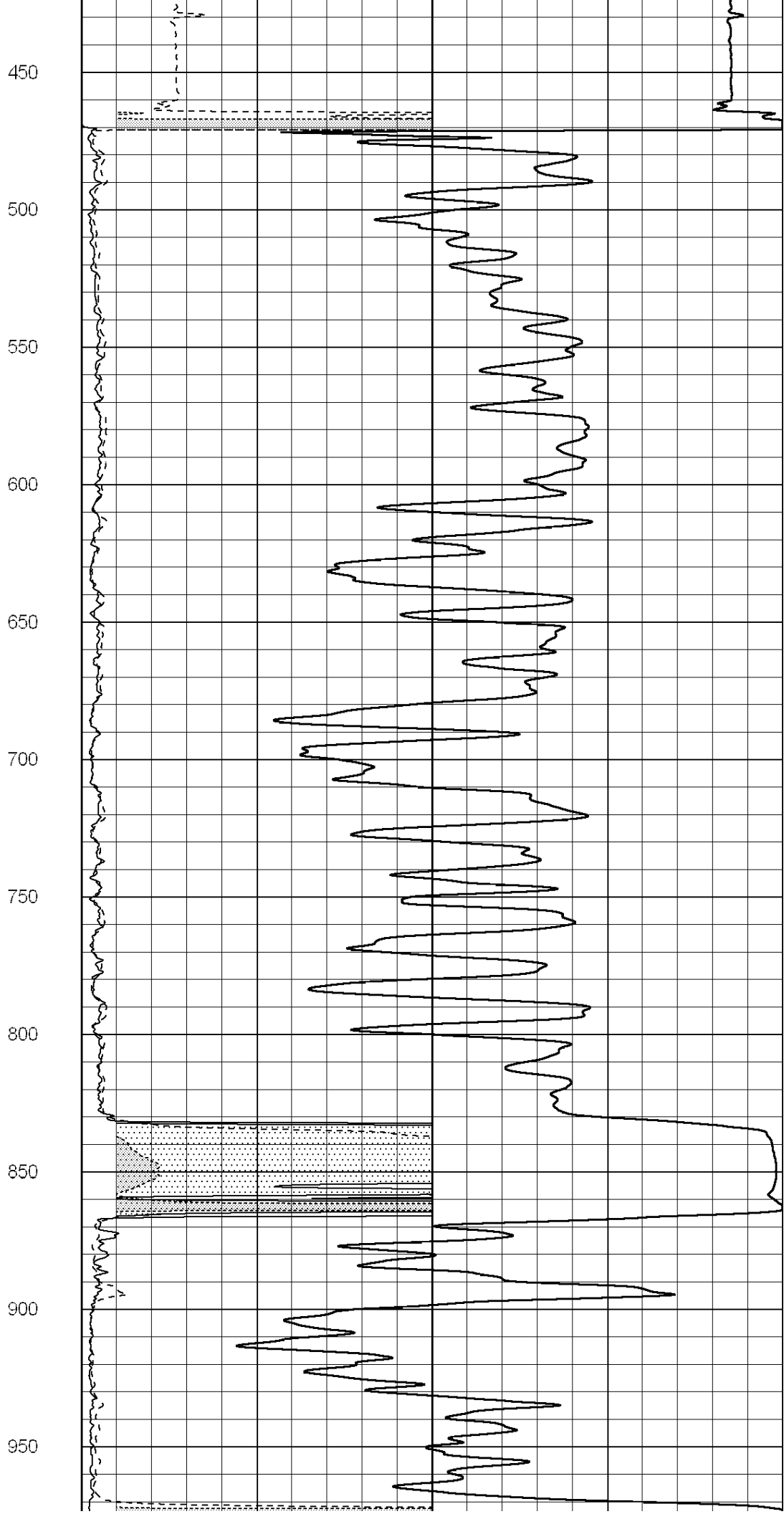
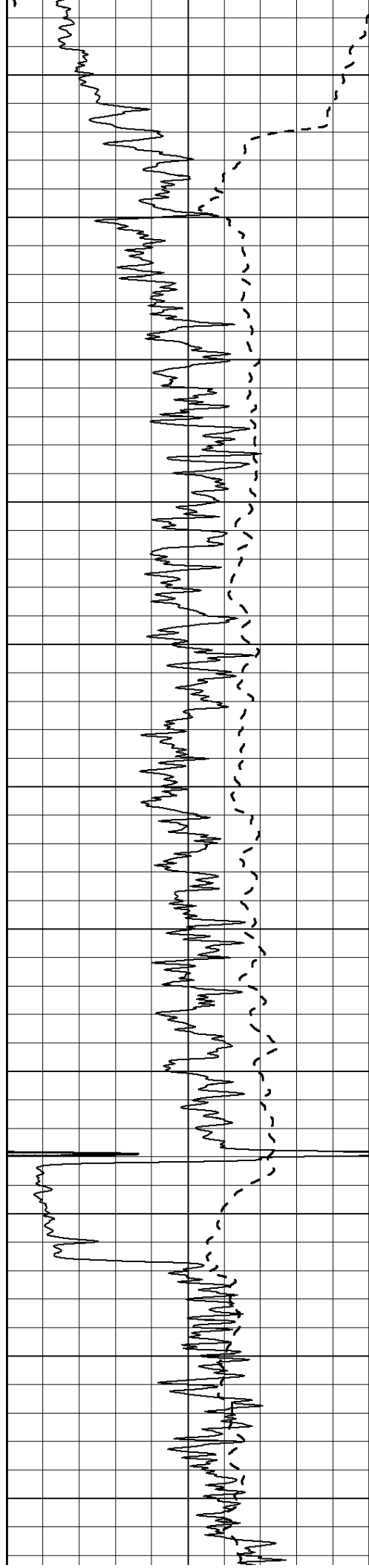
**COMPLETION  
& PRODUCTION**

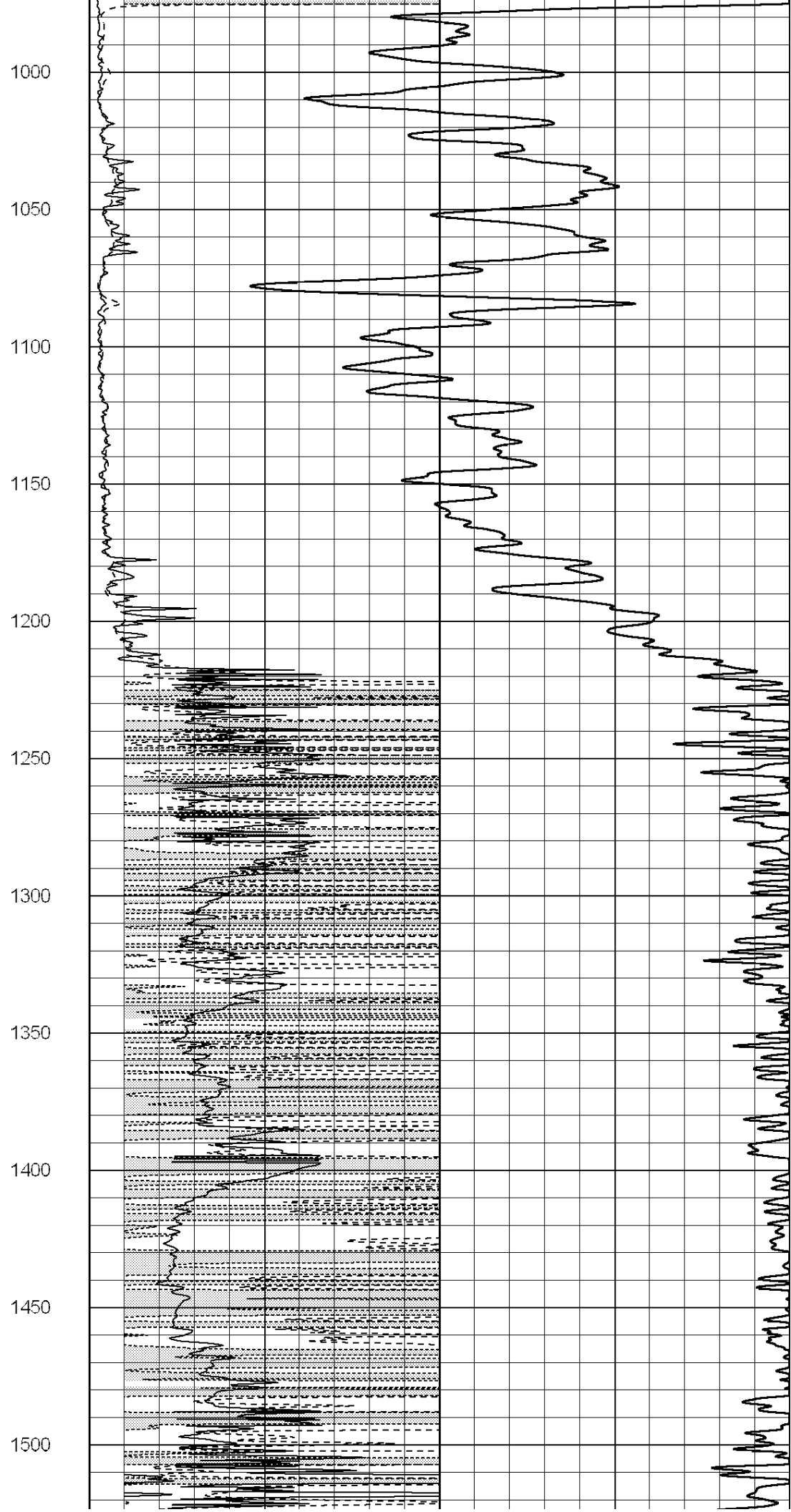
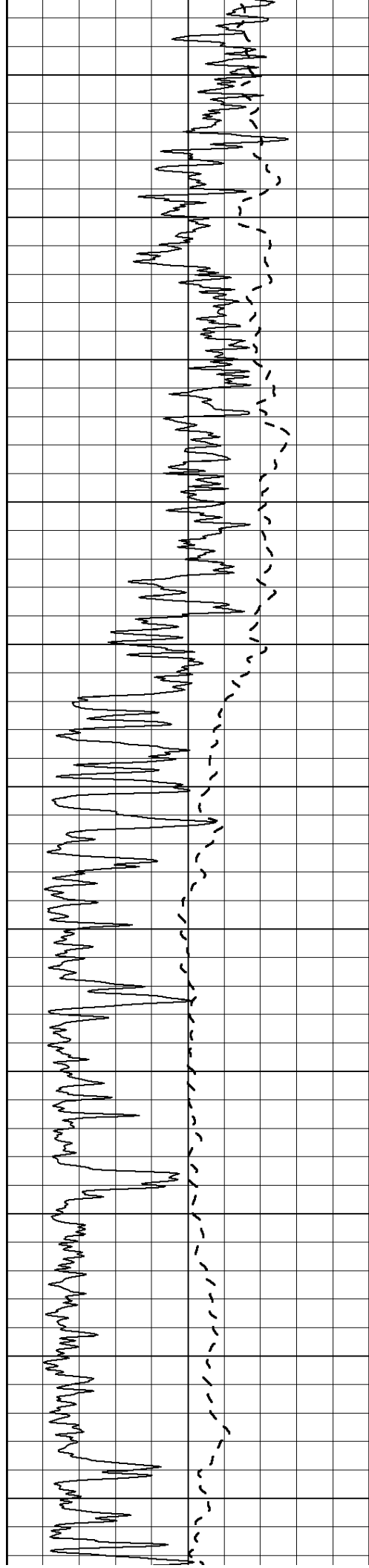
**MAIN SECTION**

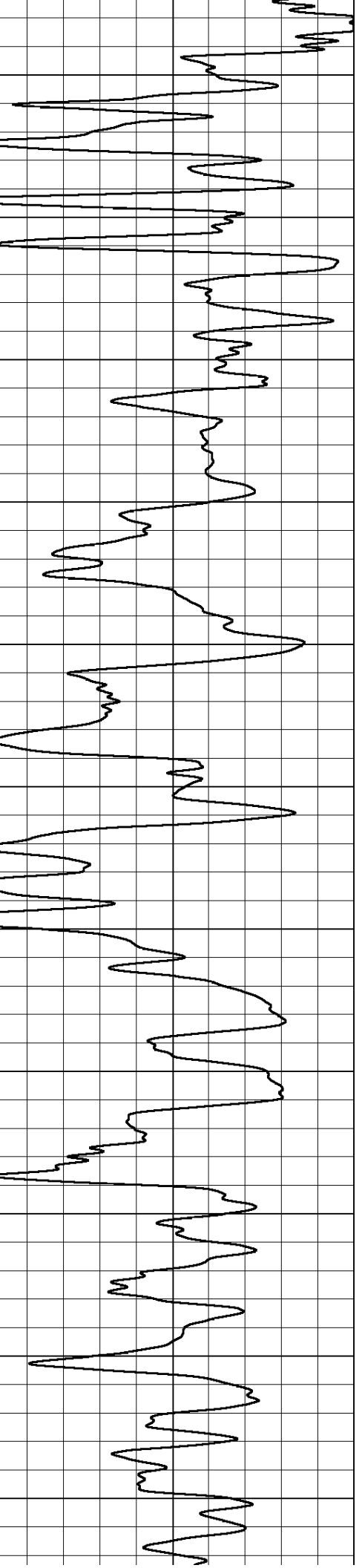
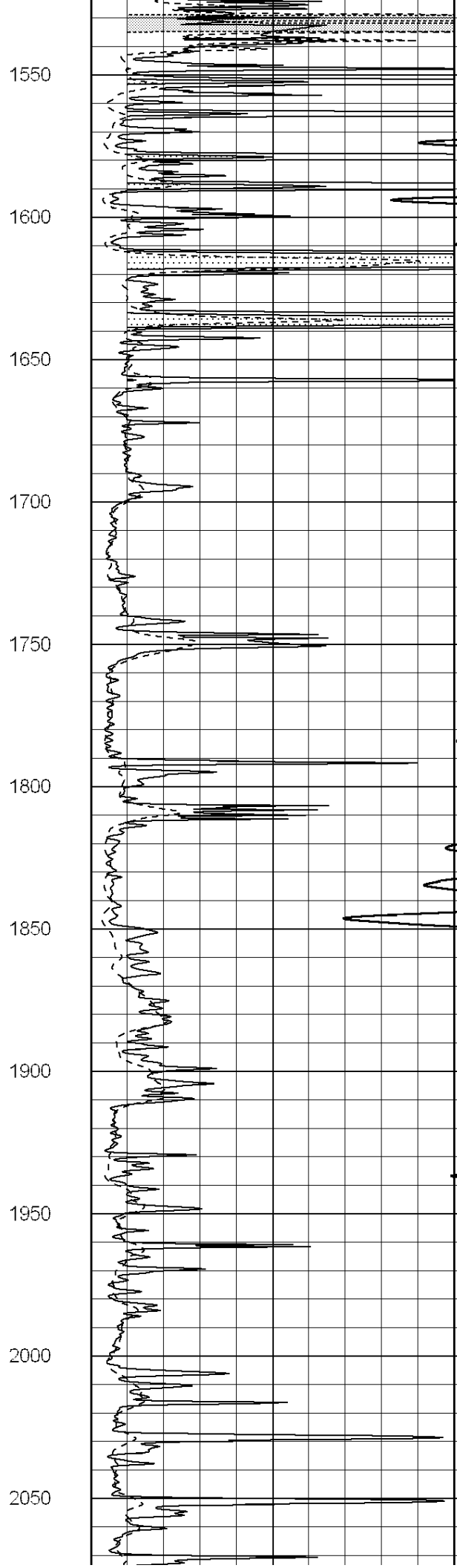
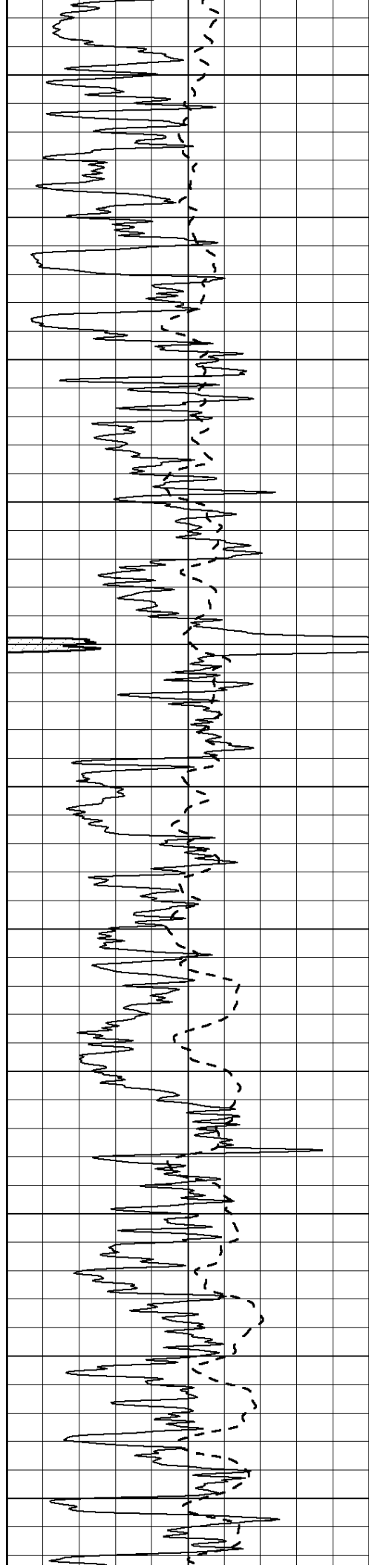
Database File: 24678ddn.db  
 Dataset Pathname: pass3.1A  
 Presentation Format: \_dil2  
 Dataset Creation: Fri Jun 27 14:26:15 2014 by Calc Open-Cased 090629  
 Charted by: Depth in Feet scaled 1:600

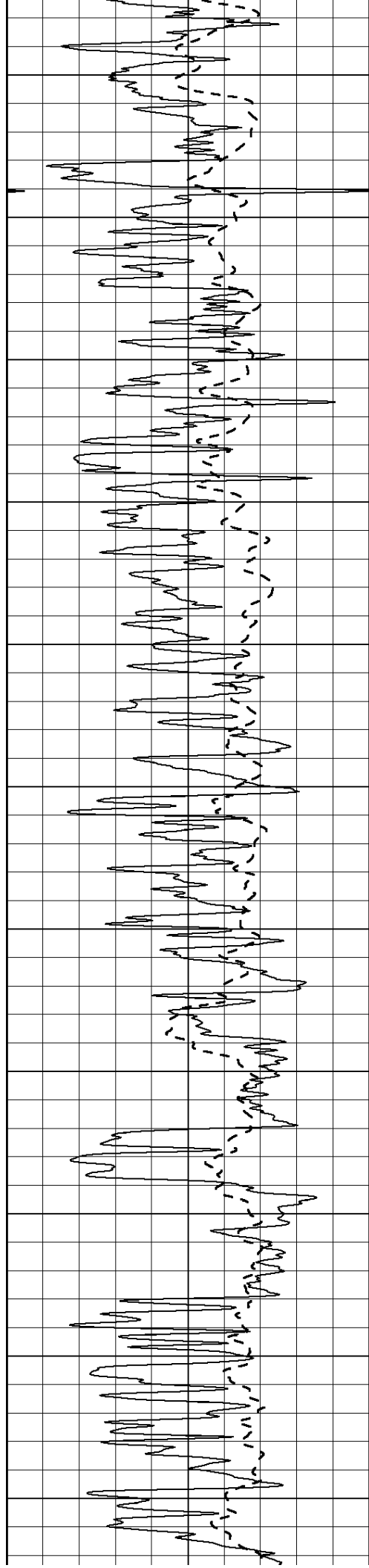
0	Gamma Ray (GAPI)	150	0	RLL3 (Ohm-m)	50
			0	Deep Induction (Ohm-m)	50
			1000	CILD (mmho/m)	0
			50	RILD X10 (Ohm-m)	500
			50	RLL3 X10 (Ohm-m)	500



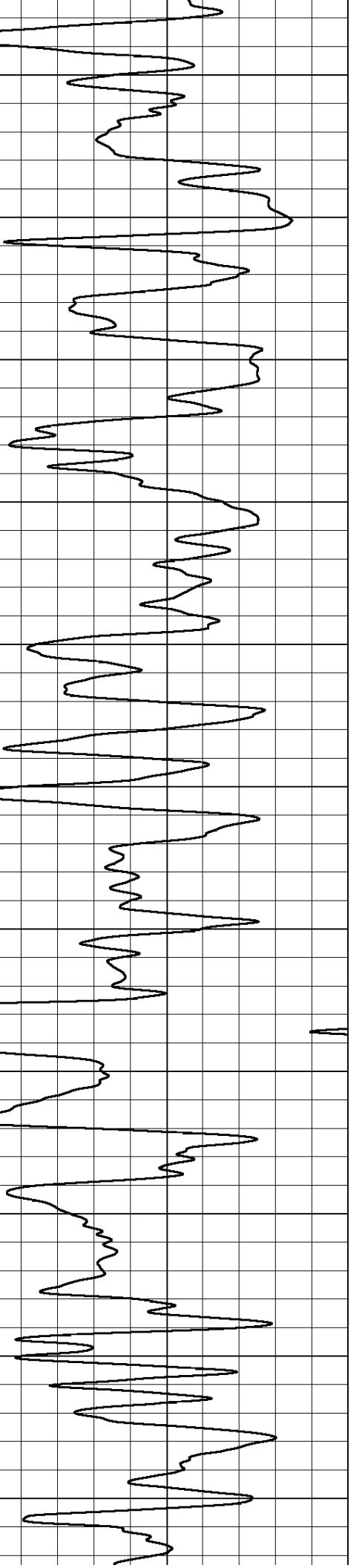
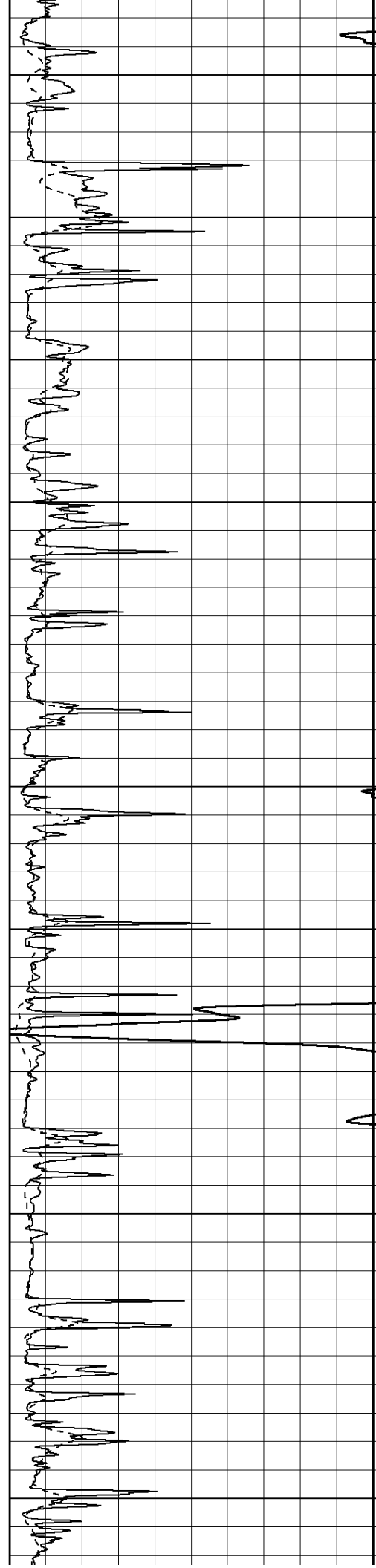


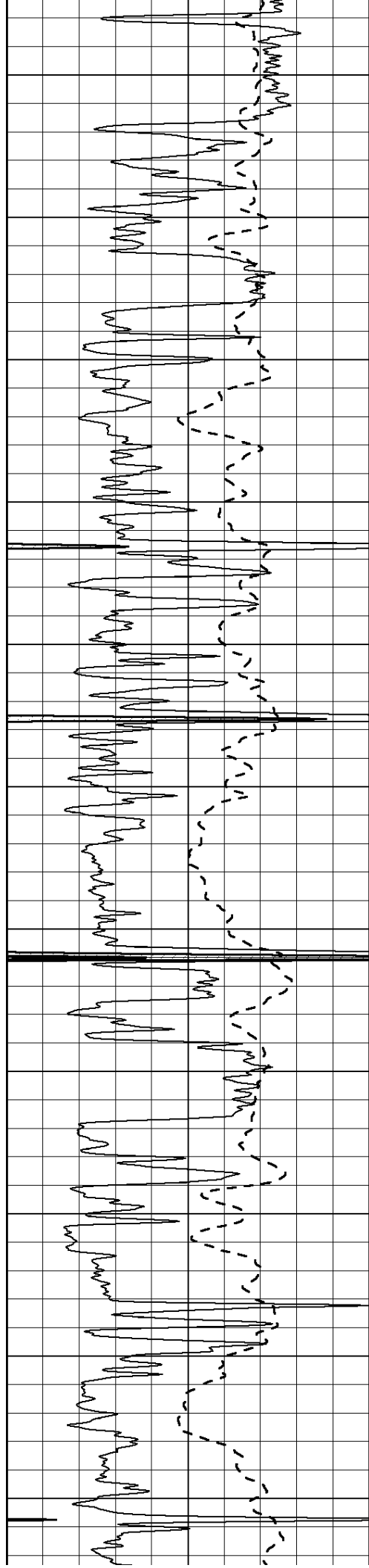




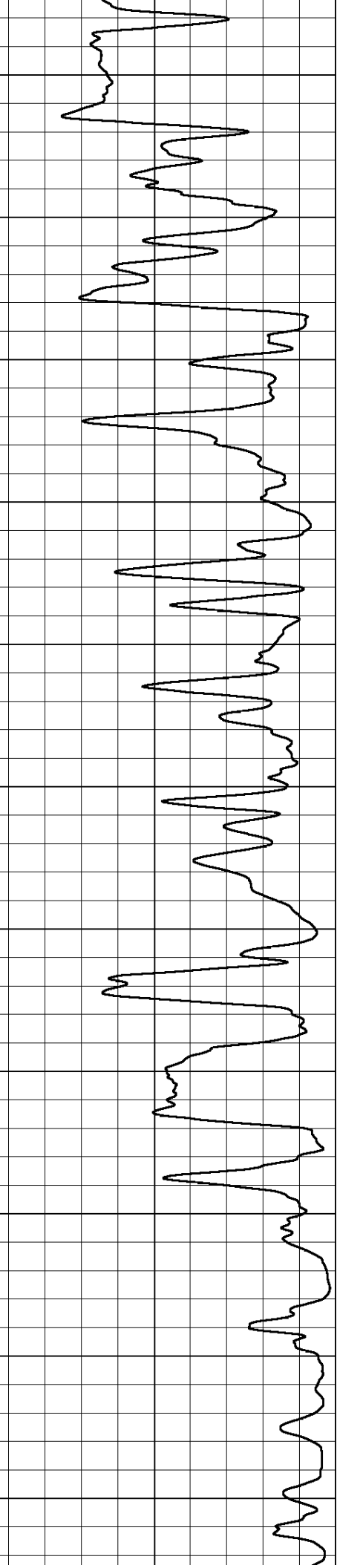
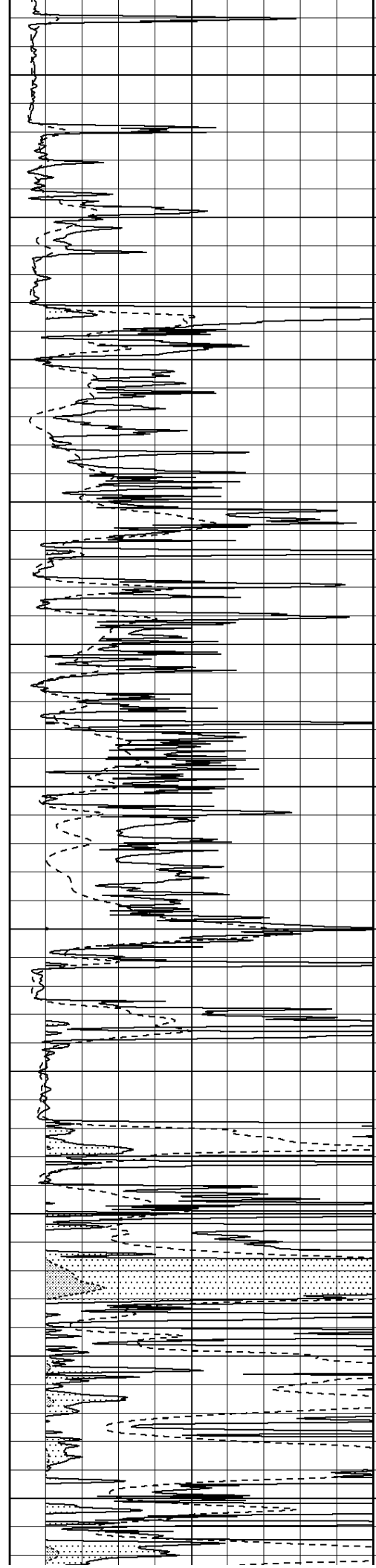


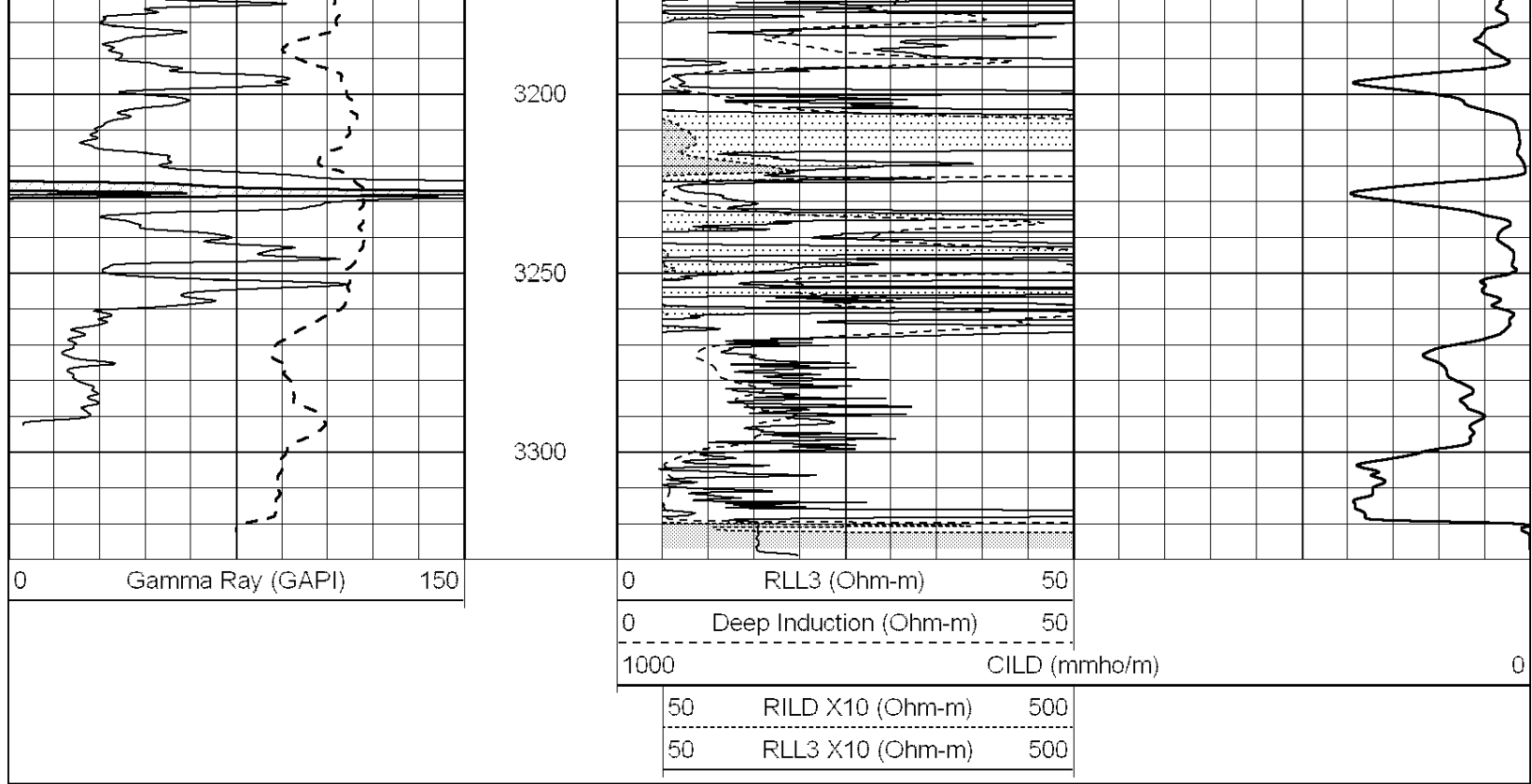
2100  
2150  
2200  
2250  
2300  
2350  
2400  
2450  
2500  
2550  
2600





2650  
2700  
2750  
2800  
2850  
2900  
2950  
3000  
3050  
3100  
3150



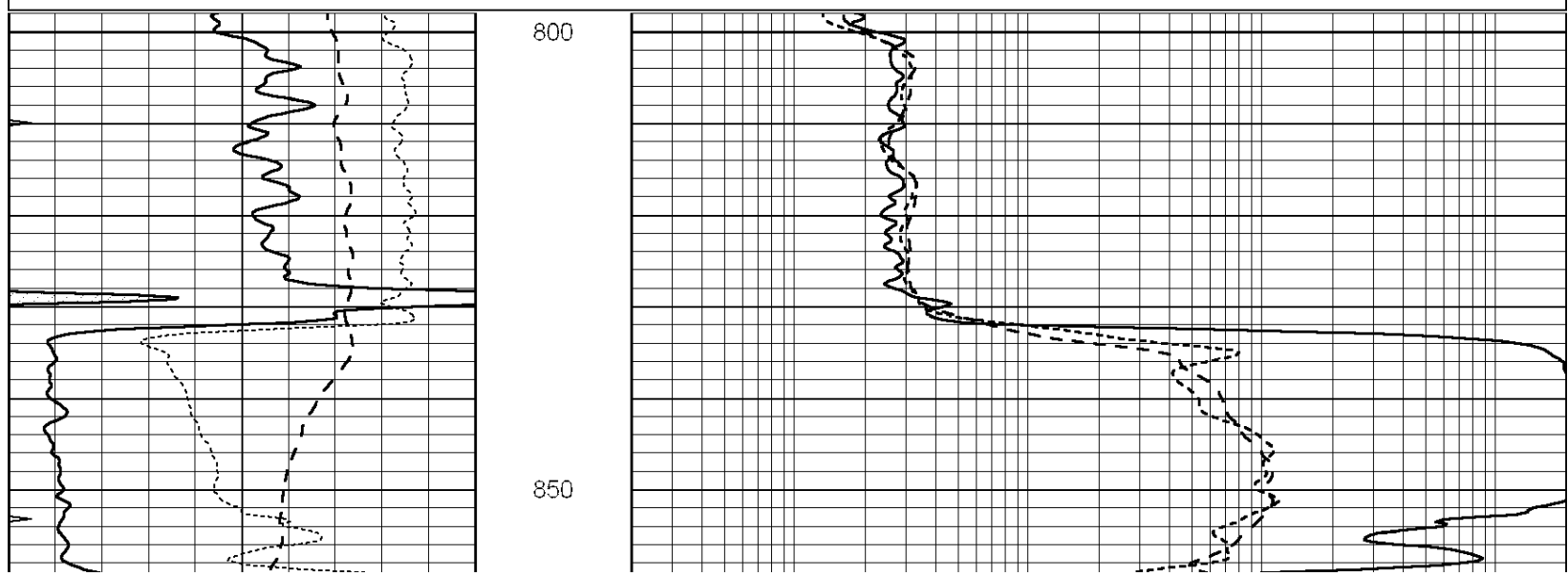


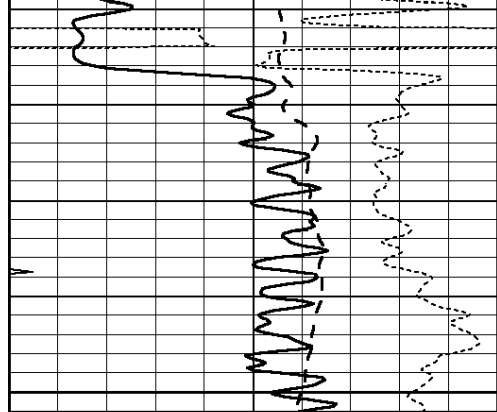
**NABORS**  
**COMPLETION & PRODUCTION SERVICES CO.**

# MAIN SECTION

Database File: 24678ddn.db  
 Dataset Pathname: pass3.1A  
 Presentation Format: \_dil  
 Dataset Creation: Fri Jun 27 14:26:15 2014 by Calc Open-Cased 090629  
 Charted by: Depth in Feet scaled 1:240

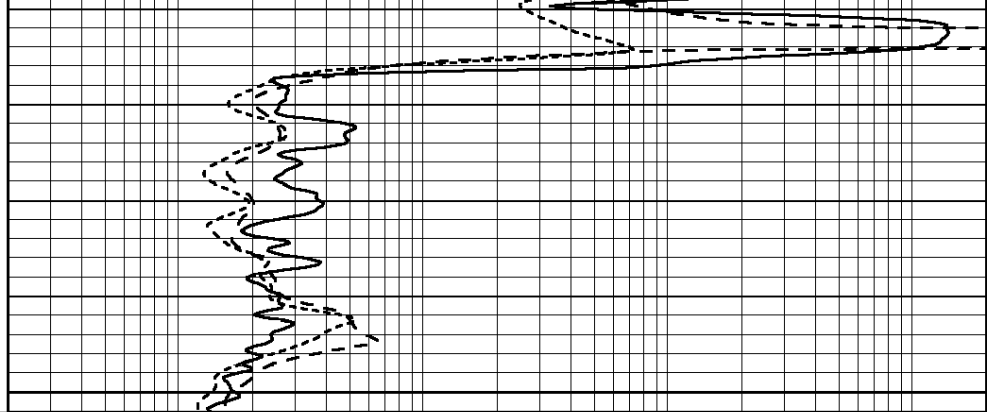
0	GAMMA RAY (GAPI)	150	0.2	RLL3 (Ohm-m)	2000
-100	SP (mV)	100	0.2	DEEP INDUCTION (Ohm-m)	2000
-250	RxoRt	50	0.2	MEDIUM INDUCTION (Ohm-m)	2000
0	MINMK	20			





900

0	GAMMA RAY (GAPI)	150
-100	SP (mV)	100
-250	RxoRt	50
0	MINMK	20



0.2	RLL3 (Ohm-m)	2000
0.2	DEEP INDUCTION (Ohm-m)	2000
0.2	MEDIUM INDUCTION (Ohm-m)	2000

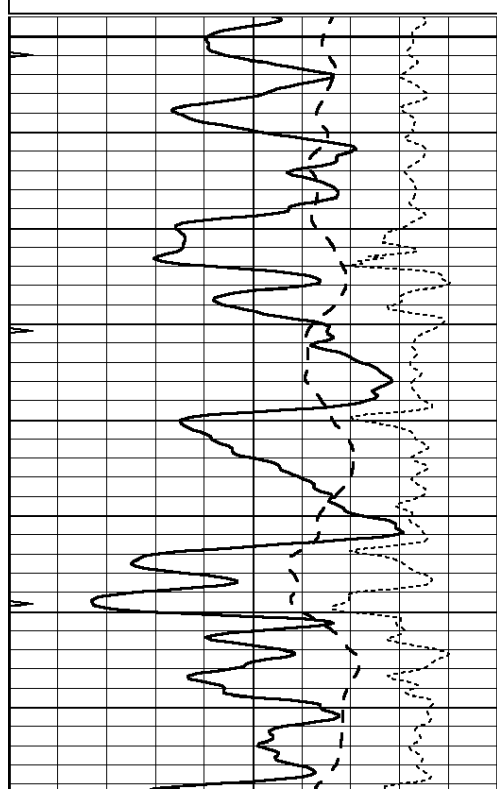


# MAIN SECTION

Database File: 24678ddn.db  
 Dataset Pathname: pass3.1A  
 Presentation Format: \_dil  
 Dataset Creation: Fri Jun 27 14:26:15 2014 by Calc Open-Cased 090629  
 Charted by: Depth in Feet scaled 1:240

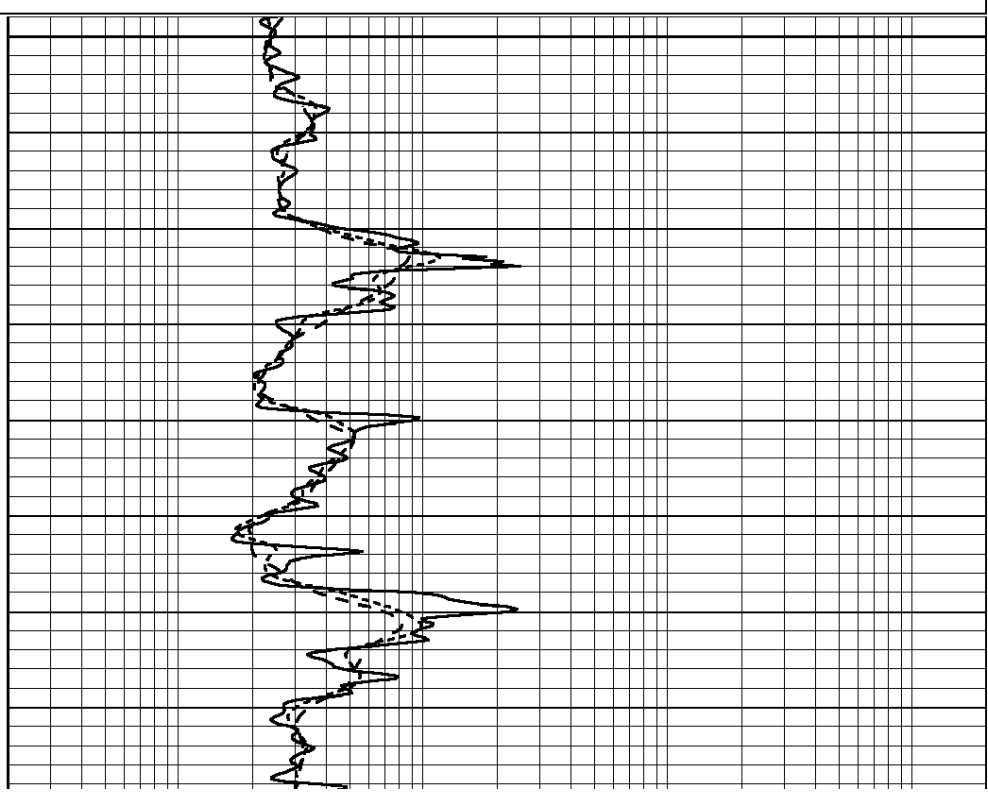
0	GAMMA RAY (GAPI)	150
-100	SP (mV)	100
-250	RxoRt	50
0	MINMK	20

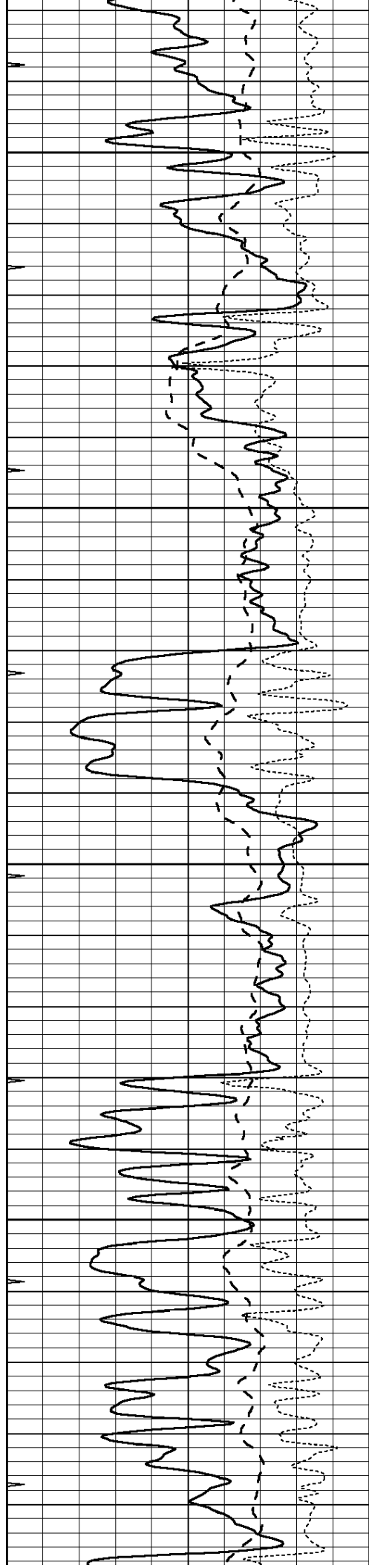
0.2	RLL3 (Ohm-m)	2000
0.2	DEEP INDUCTION (Ohm-m)	2000
0.2	MEDIUM INDUCTION (Ohm-m)	2000



2300

2350



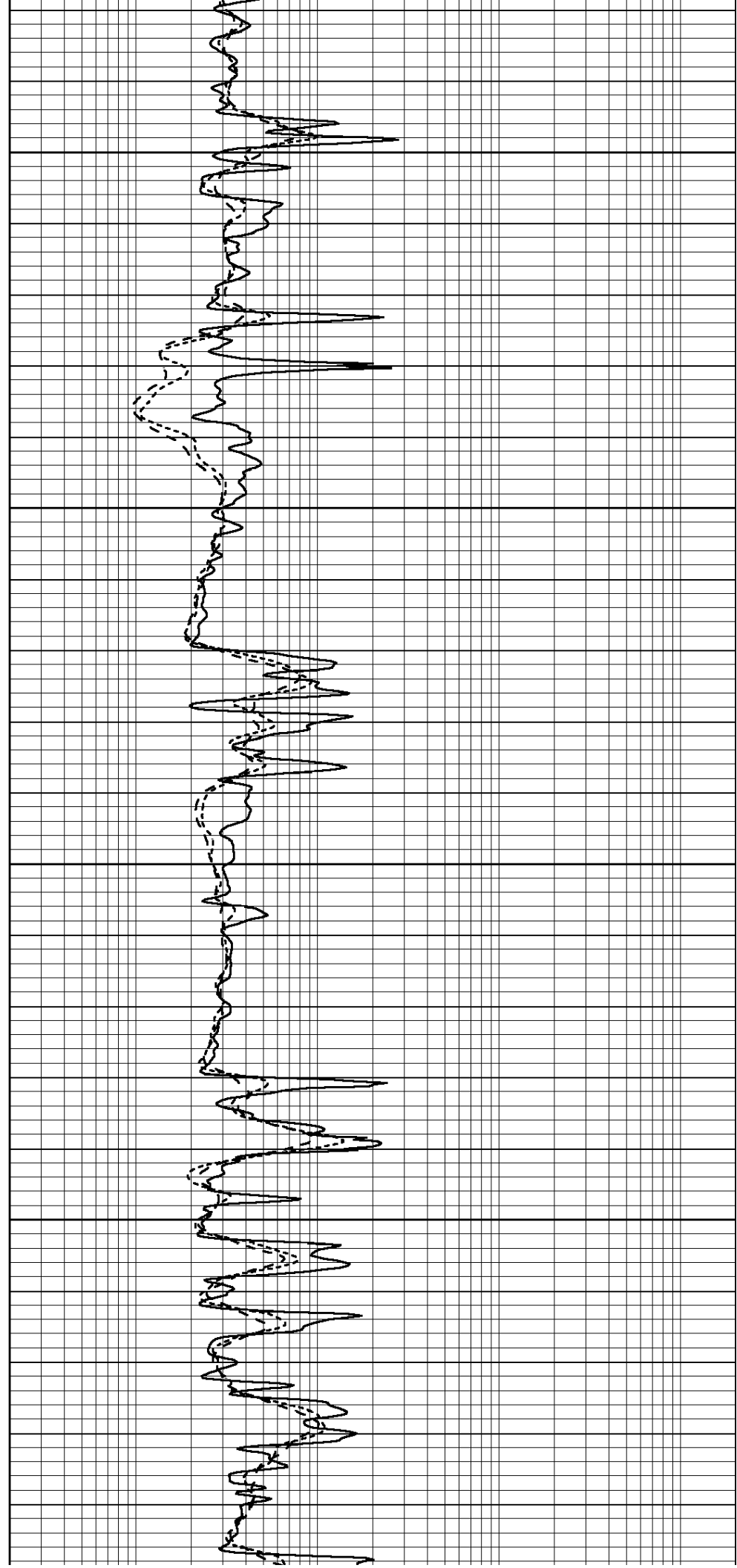


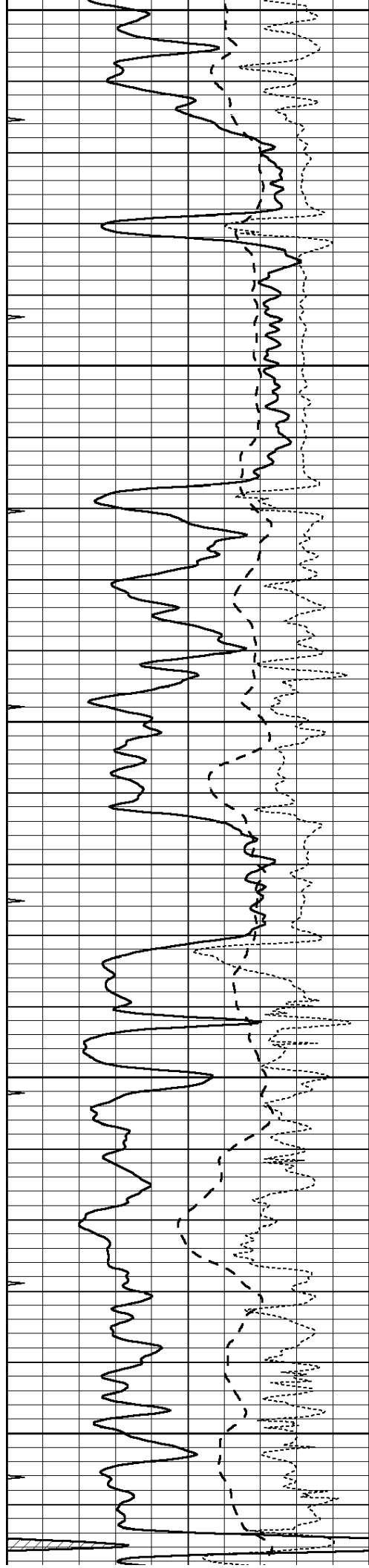
2400

2450

2500

2550





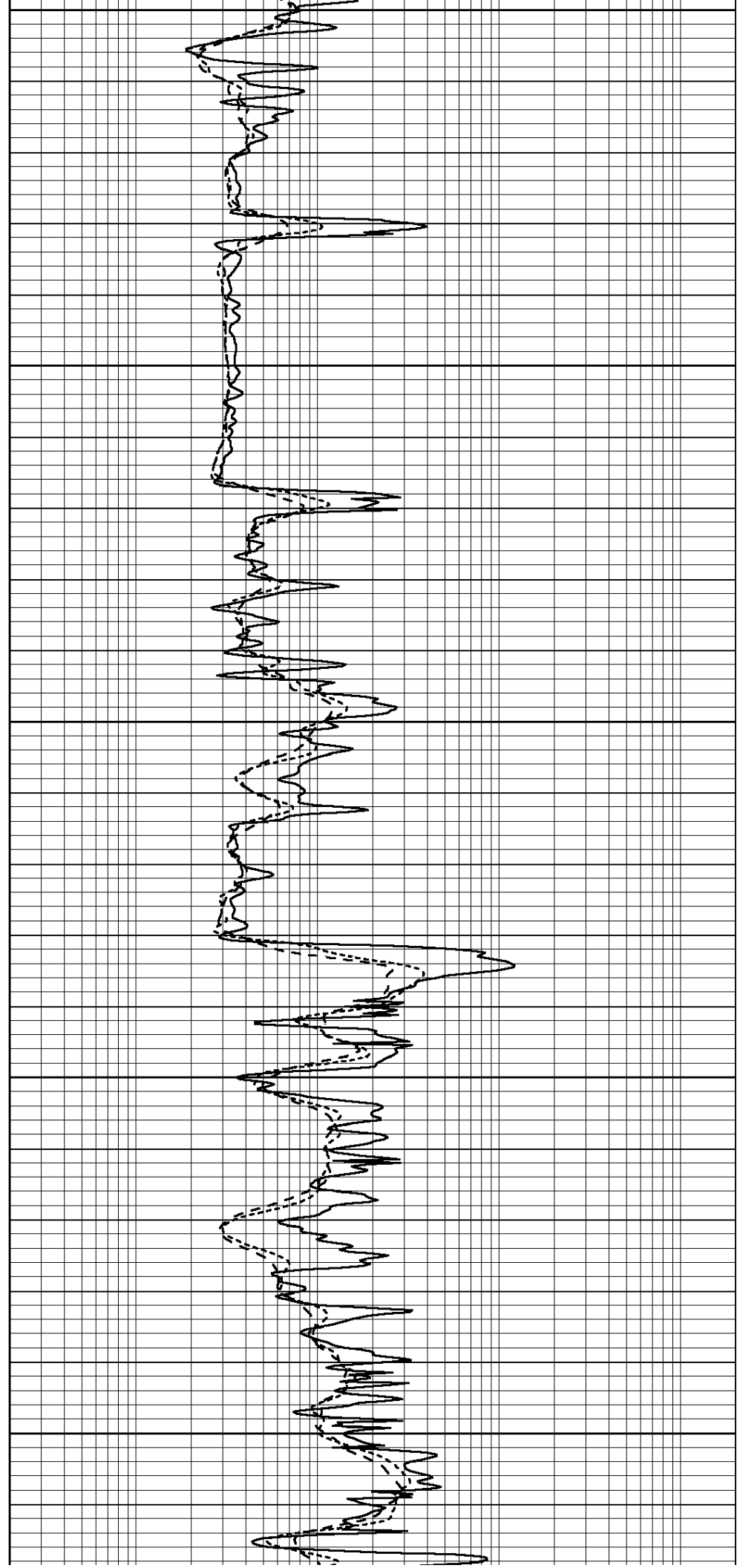
2600

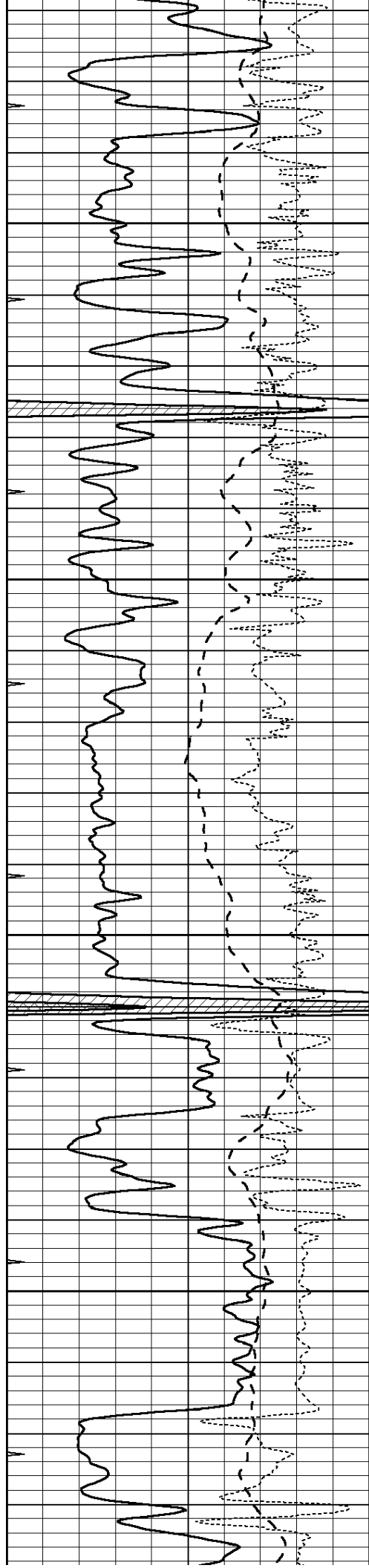
2650

2700

2750

2800



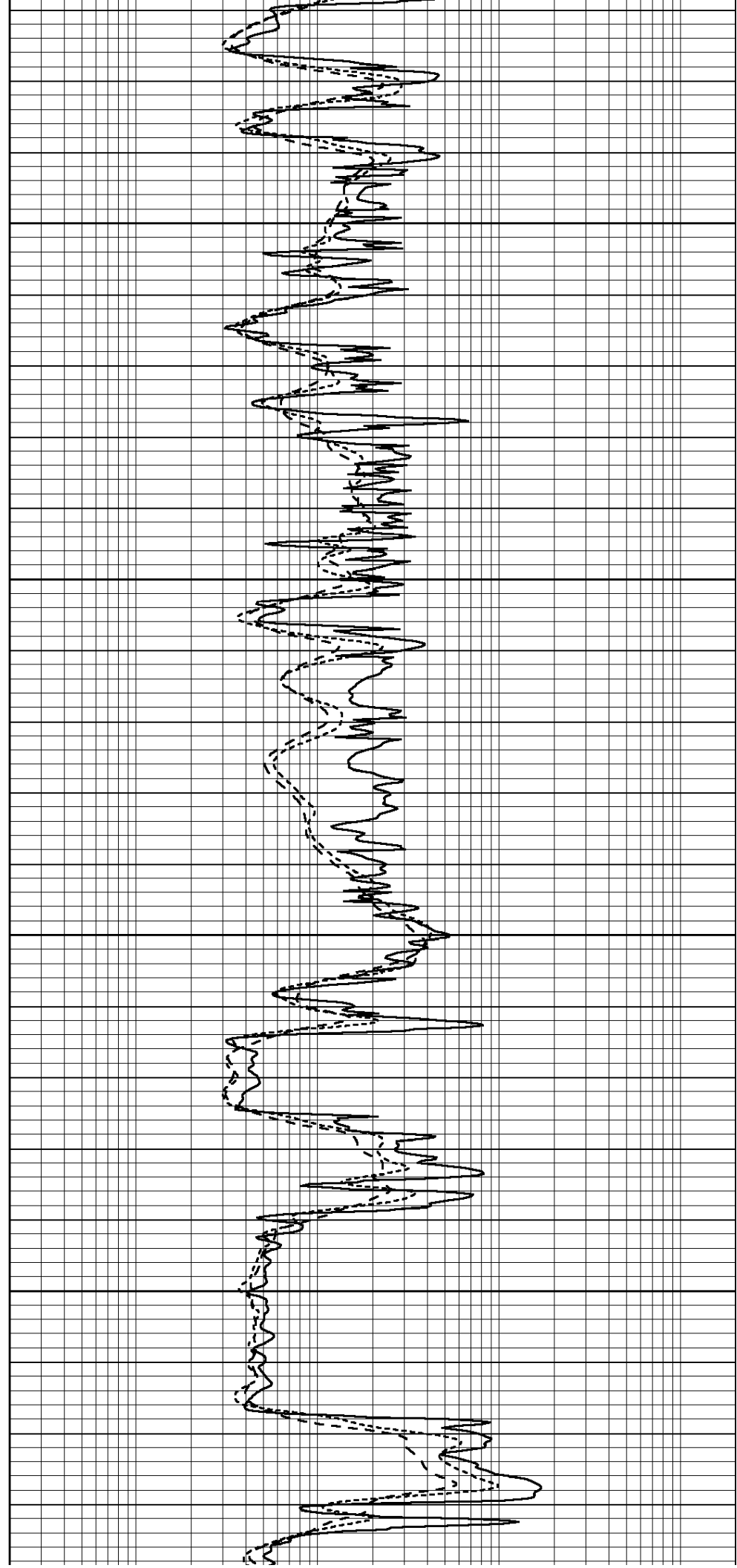


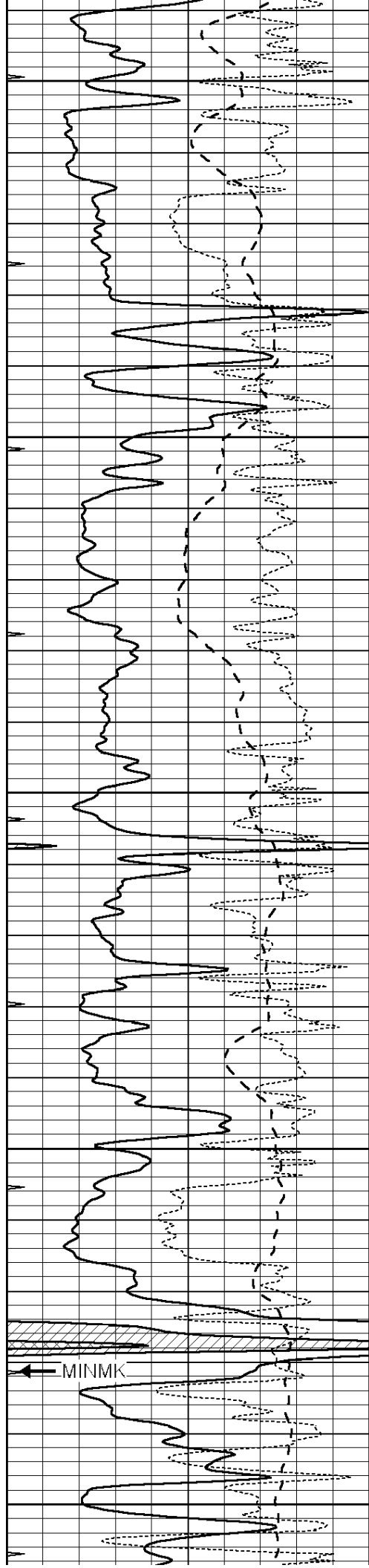
2850

2900

2950

3000





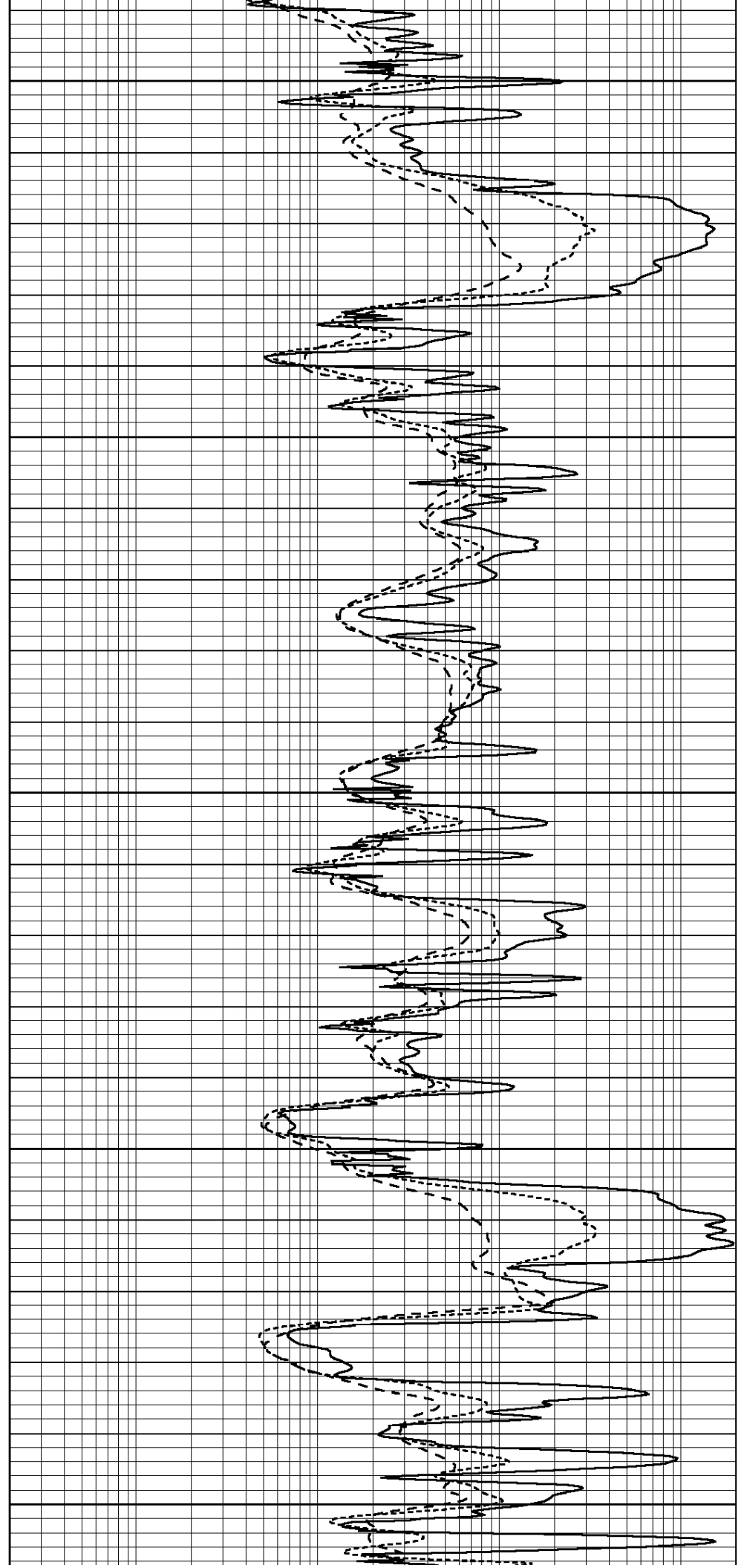
3050

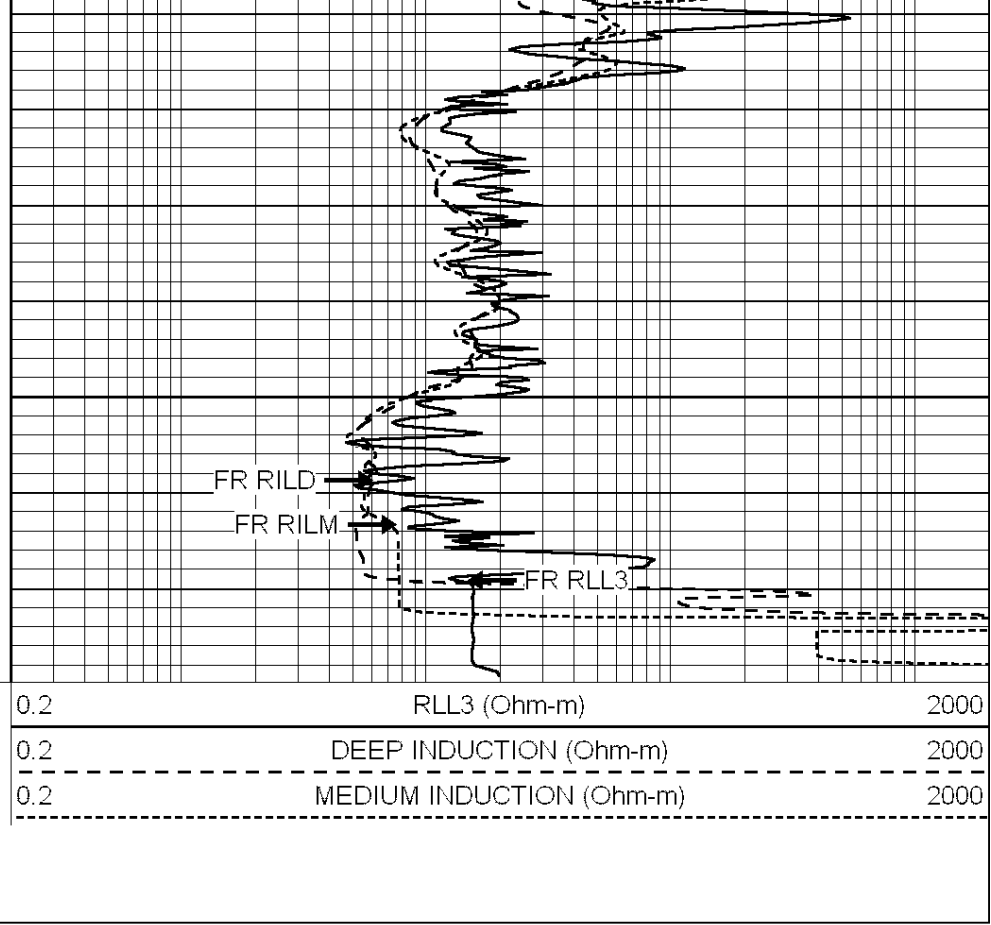
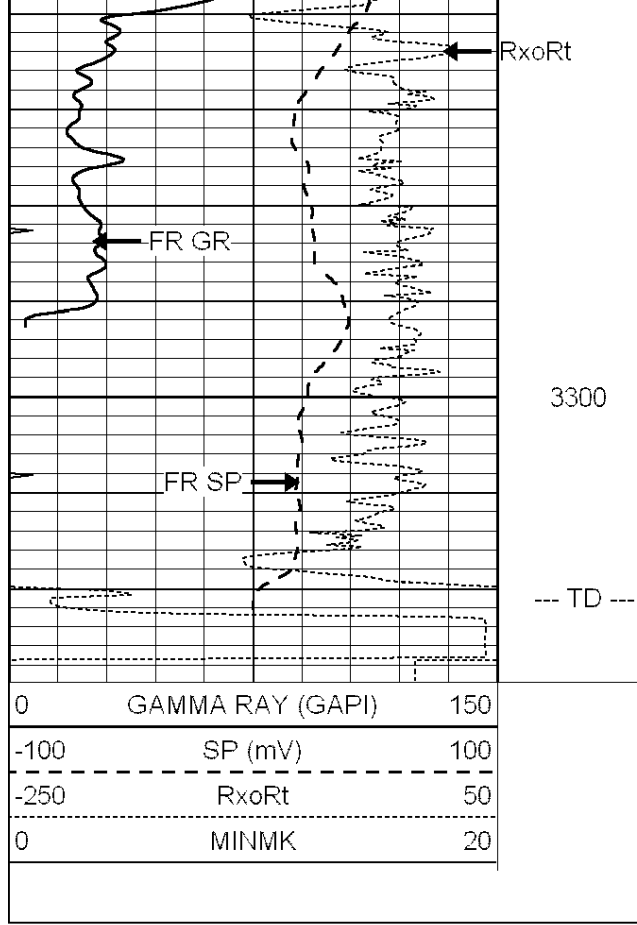
3100

3150

3200

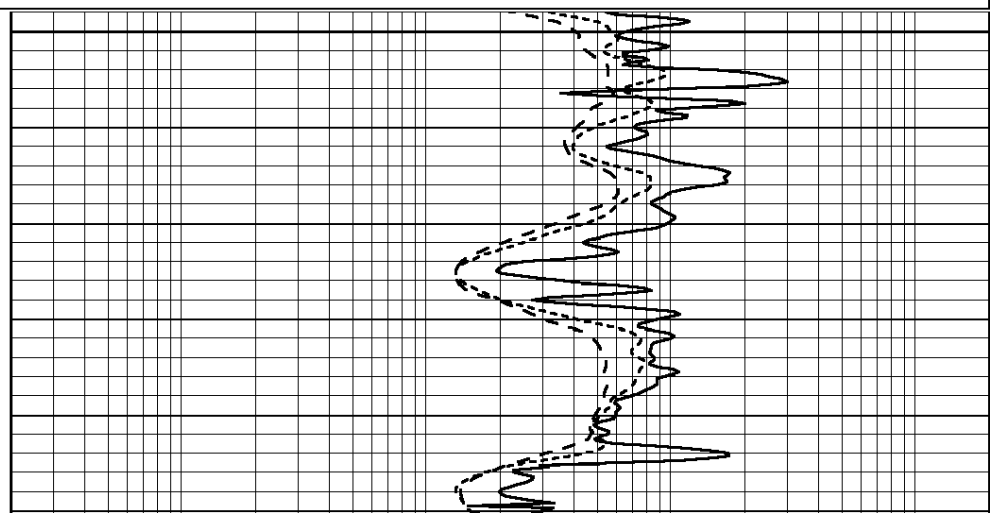
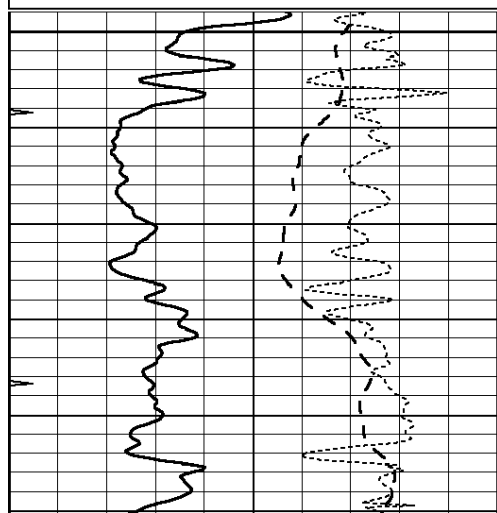
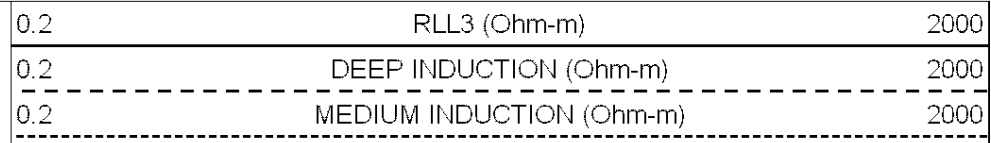
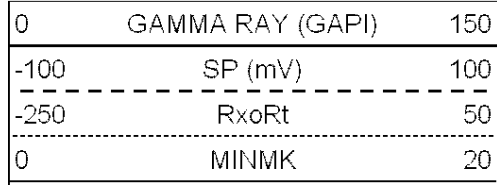
3250

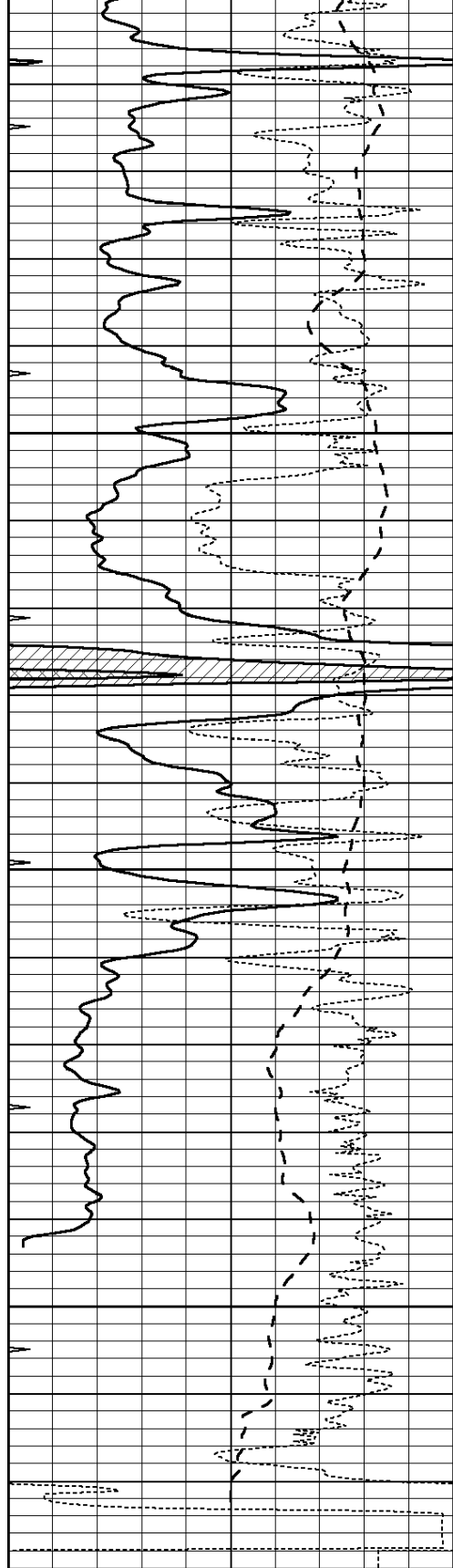




# REPEAT SECTION

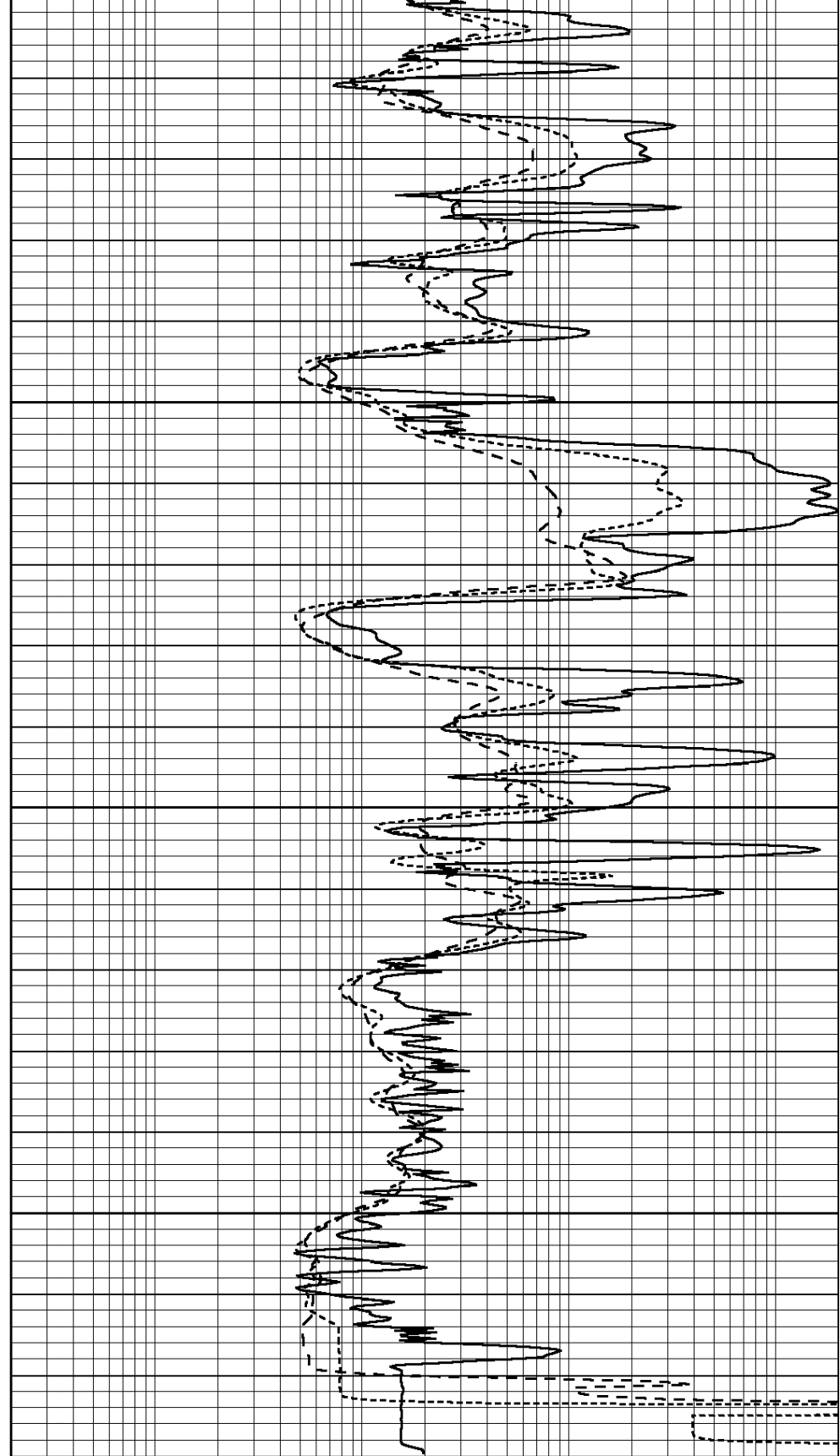
Database File: 24678ddn.db  
 Dataset Pathname: pass2.A  
 Presentation Format: \_dil  
 Dataset Creation: Fri Jun 27 13:59:04 2014 by Calc Open-Cased 090629  
 Charted by: Depth in Feet scaled 1:240





3150  
3200  
3250  
3300

0	GAMMA RAY (GAPI)	150
-100	SP (mV)	100
-250	RxoRt	50
0	MINMK	20



0.2	RLL3 (Ohm-m)	2000
0.2	DEEP INDUCTION (Ohm-m)	2000
0.2	MEDIUM INDUCTION (Ohm-m)	2000

Calibration Report

### Dual Induction Calibration Report

Serial-Model: PROBE7-DILG  
 Surface Cal Performed: Fri Jun 27 14:00:42 2014  
 Downhole Cal Performed: Sat Jan 19 19:51:38 2013  
 After Survey Verification Performed: Sat Jan 19 19:51:38 2013

#### Surface Calibration

Loop:	Readings			References			Results	
	Air	Loop	V	Air	Loop	mmho/m	m	b
Deep	0.793	0.790	V	0.000	400.000	mmho/m	490.000	12.500
Medium	0.992	1.002	V	0.000	464.000	mmho/m	530.000	-32.000
Internal:	Zero	Cal		Zero	Cal		m	b
Deep	0.041	0.642	V	0.000	400.000	mmho/m	664.874	-27.011
Medium	0.035	0.802	V	0.000	464.000	mmho/m	604.936	-21.367

#### Downhole Calibration

	Readings			References			Results	
	Zero	Cal		Zero	Cal		m'	b'
Deep	135384.000	27094.500	mmho/m	135400.000	27082.400	mmho/m	1.000	-19.259
Medium	-47330.100	-9381.740	mmho/m	-47327.100	-9389.280	mmho/m	1.000	-10.154
LL3		7.322	V		1400.000	Ohm-m		
		0.038	V		20.000	Ohm-m		
		-7.273	V		4000.000	mmho-m		

#### After Survey Verification

	Readings			Targets			Results	
	Zero	Cal		Zero	Cal		m'	b'
Deep	0.000	0.000	mmho/m	135384.000	27094.500	mmho/m	1.000	0.000
Medium	0.000	0.000	mmho/m	-47330.100	-9381.740	mmho/m	1.000	0.000
LL3		0.000	Ohm-m		1400.000	Ohm-m		
		0.000	Ohm-m		20.000	Ohm-m		
		0.000	mmho-m		4000.000	mmho-m		

### Compensated Density Calibration Report

Serial-Model: GEAR2-GEARHART  
 Source / Verifier: 147 / 147  
 Master Calibration Performed: Fri Jun 27 11:55:27 2014

#### Master Calibration

	Density		Far Detector	Near Detector	
Magnesium	1.710	g/cc	942.85	578.84	cps
Aluminum	2.580	g/cc	210.04	397.59	cps
Spine Angle = 75.96			Density/Spine Ratio = 0.562		
	Size		Reading		
Small Ring	8.00	in	1.80	V	
Large Ring	14.00	in	2.69	V	

### Compensated Neutron Calibration Report

Serial Number: 080621  
 Tool Model: Probe

PRE-SURVEY VERIFICATION

Detector	Readings	Measured	Target
Short Space	cps		
Long Space	cps	pu	pu

POST-SURVEY VERIFICATION

Detector	Readings	Measured	Target
Short Space	cps		
Long Space	cps	pu	pu

Gamma Ray Calibration Report

Serial Number:	080328	
Tool Model:	Probe1	
Performed:	Fri Jun 27 12:59:13 2014	
Calibrator Value:	1.0	GAPI
Background Reading:	0.0	cps
Calibrator Reading:	1.0	cps
Sensitivity:	0.2600	GAPI/cps