



**COMPLETION  
& PRODUCTION  
SERVICES CO.**

**MICRO  
LOG**

Company TREK AEC, INC.  
Well DRISCOLL #2  
Field GIDEON  
County RUSSELL State KANSAS

Company TREK AEC, INC.  
Well DRISCOLL #2  
Field GIDEON  
County RUSSELL  
State KANSAS

Location: API #: 15-167-23968  
1000' FNL & 1420' FEL  
SEC 8 TWP 15S RGE 14W  
Permanent Datum GROUND LEVEL Elevation 1828  
Log Measured From KELLY BUSHING 5' A.G.L.  
Drilling Measured From KELLY BUSHING  
Other Services  
CDL/CNL  
DIL  
Elevation  
K.B. 1833  
D.F.  
G.L. 1828

Date	6-27-14
Run Number	TW0
Depth Driller	3320
Depth Logger	3321
Bottom Logged Interval	3318
Top Log Interval	2300
Casing Driller	471
Casing Logger	471
Bit Size	7.875
Type Fluid in Hole	CHEMICAL MUD
Density / Viscosity	9.2 / 60
pH / Fluid Loss	10.0 / 13.2
Source of Sample	FLOWLINE
Rim @ Meas. Temp	0.40 @ 85F
Rmf @ Meas. Temp	0.30 @ 85F
Rmc @ Meas. Temp	0.48 @ 85F
Source of Rmf / Rmc	FLOWLINE
Rim @ BHT	310 @ 108F
Time Circulation Stopped	2 HOURS
Time Logger on Bottom	1:15 P.M.
Maximum Recorded Temperature	108F
Equipment Number	860
Location	HAYS, KS.
Recorded By	RUPP
Witnessed By	AARON YOUNG

<<< Fold Here >>>

All interpretations are opinions based on inferences from electrical or other measurements and we cannot and do not guarantee the accuracy or correctness of any interpretation, and we shall not, except in the case of gross or willful negligence on our part, be liable or responsible for any loss, costs, damages, or expenses incurred or sustained by anyone resulting from any interpretation made by any of our officers, agents or employees. These interpretations are also subject to our general terms and conditions set out in our current Price Schedule.

Comments

NABORS COMPLETION & PRODUCTION SERVICES  
785-628-6395  
THANK YOU FOR YOUR BUSINESS  
DIRECTIONS: RUSSELL, 6S TO RIVER BRIDGE, 2W ON WALTERS LANE, 1S, W INTO.



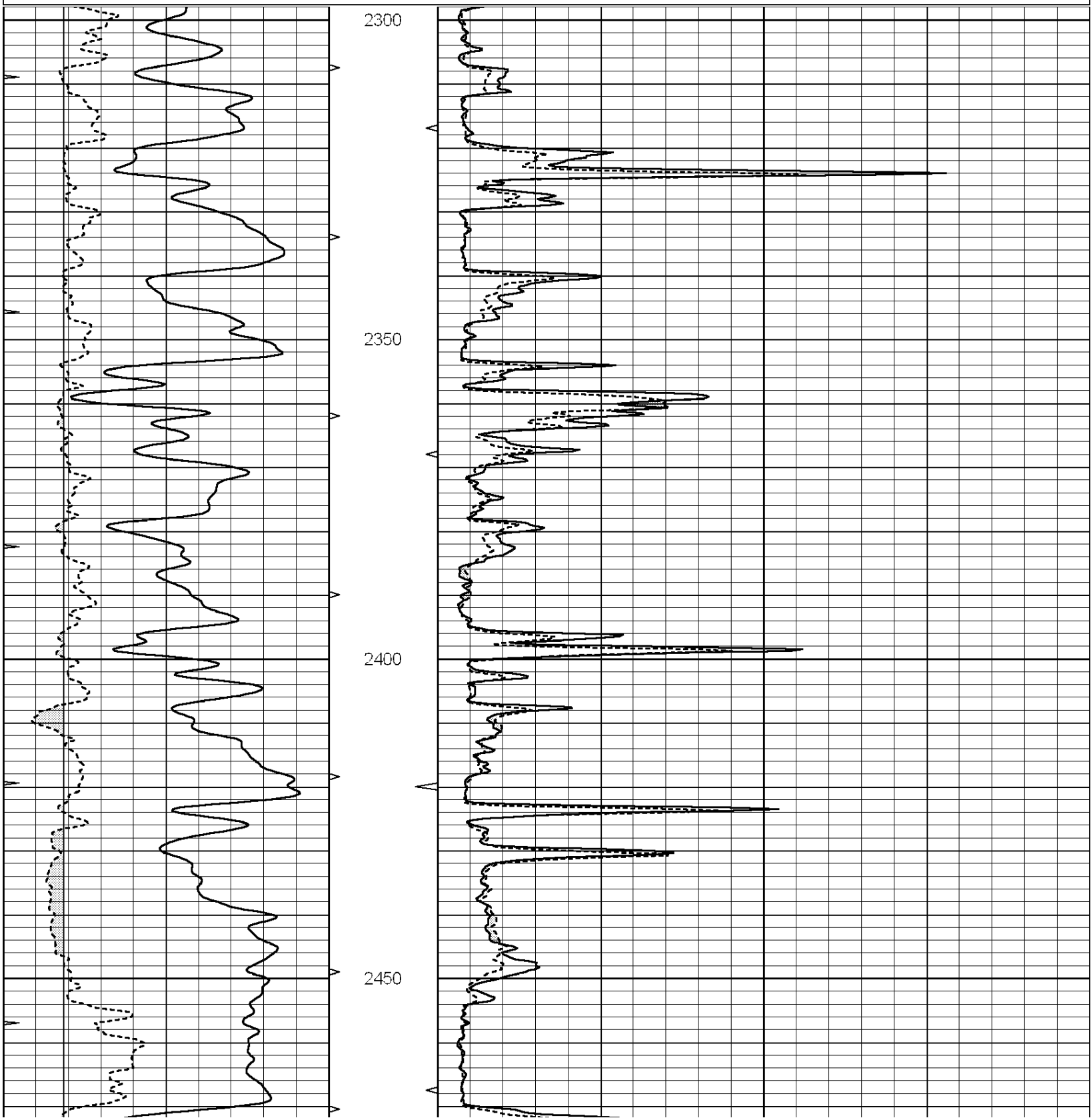
**COMPLETION  
& PRODUCTION**

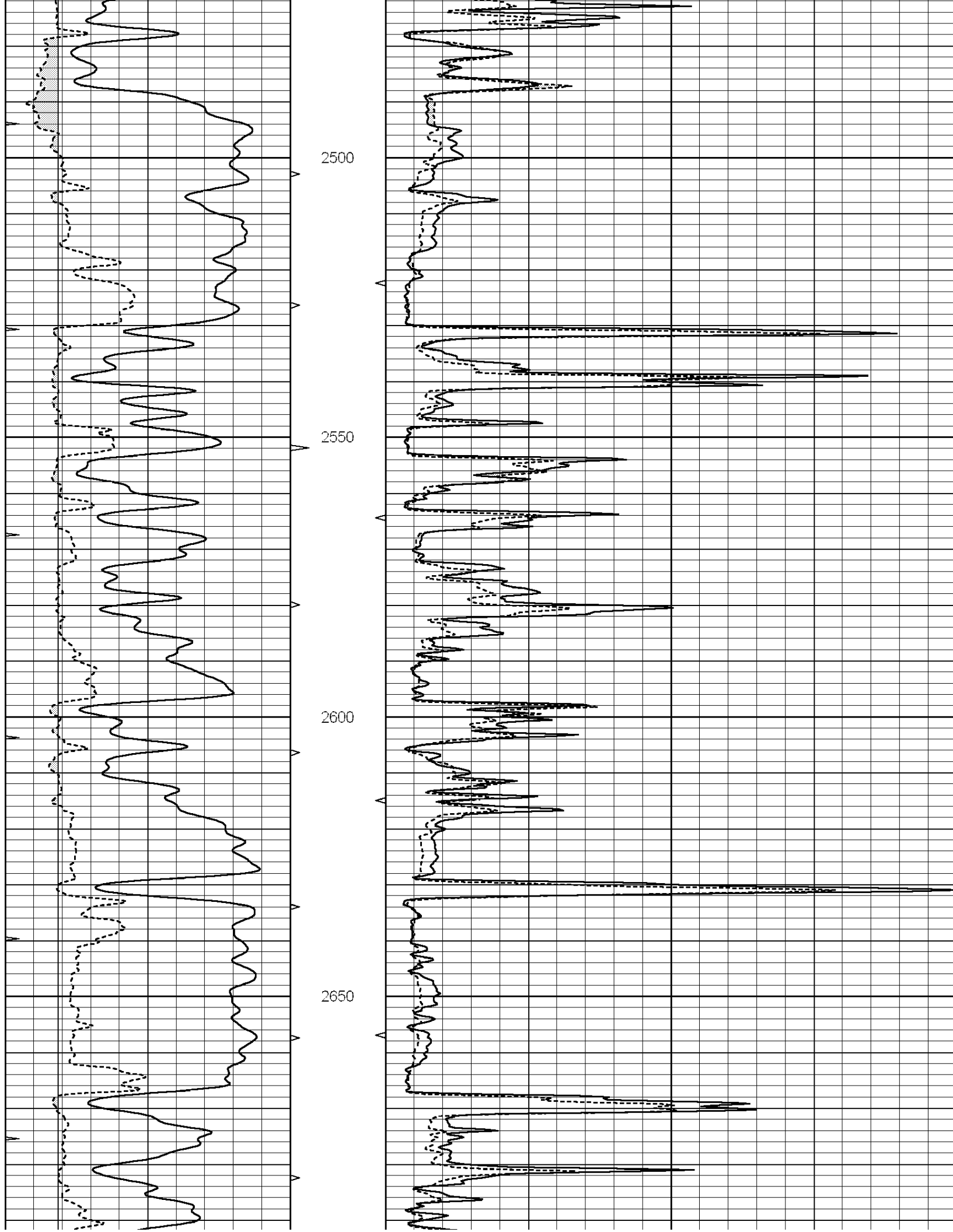
**MAIN SECTION**

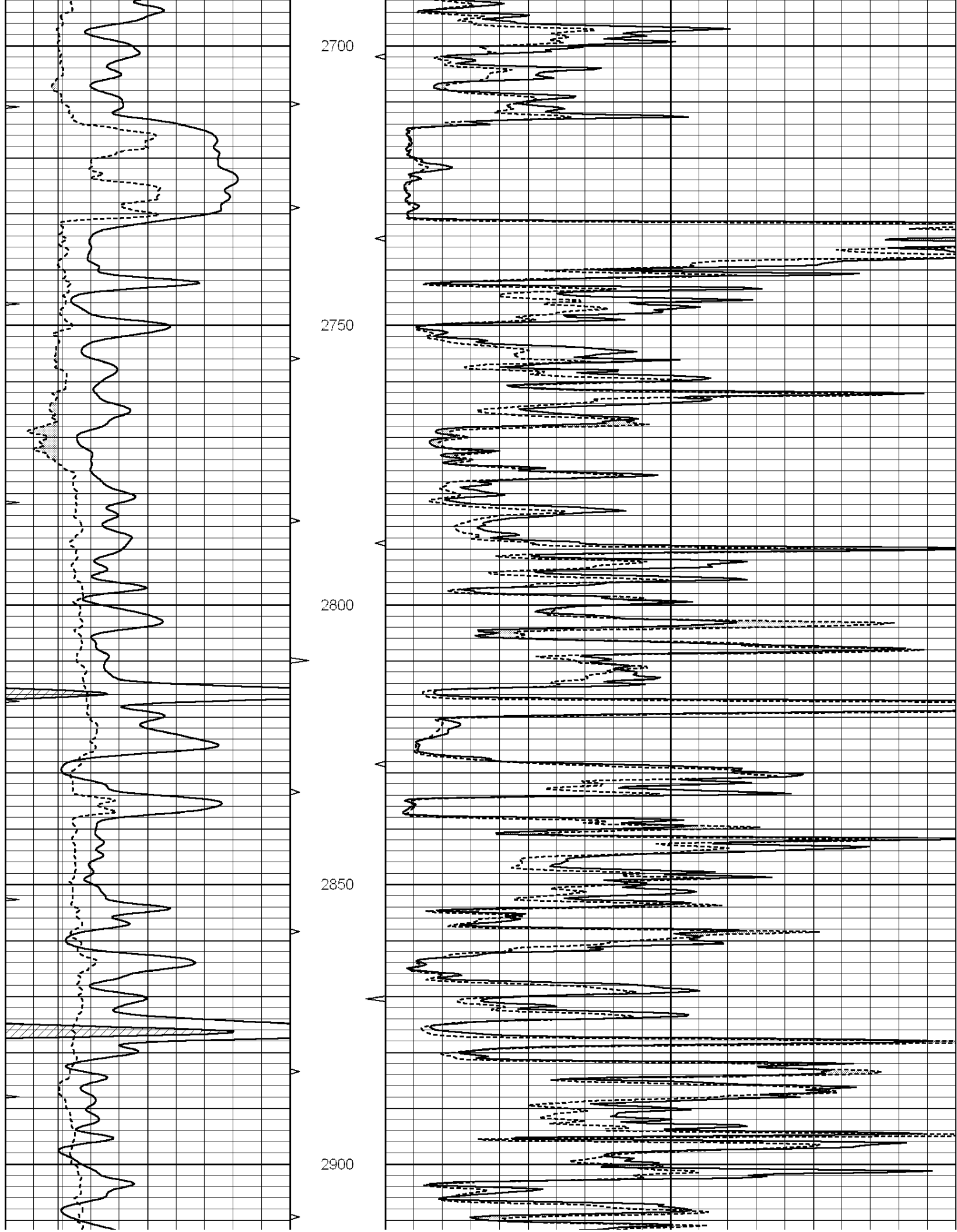
Database File: 24678ddn.db  
 Dataset Pathname: pass5.A  
 Presentation Format: \_micro  
 Dataset Creation: Fri Jun 27 15:58:42 2014 by Calc Open-Cased 090629  
 Charted by: Depth in Feet scaled 1:240

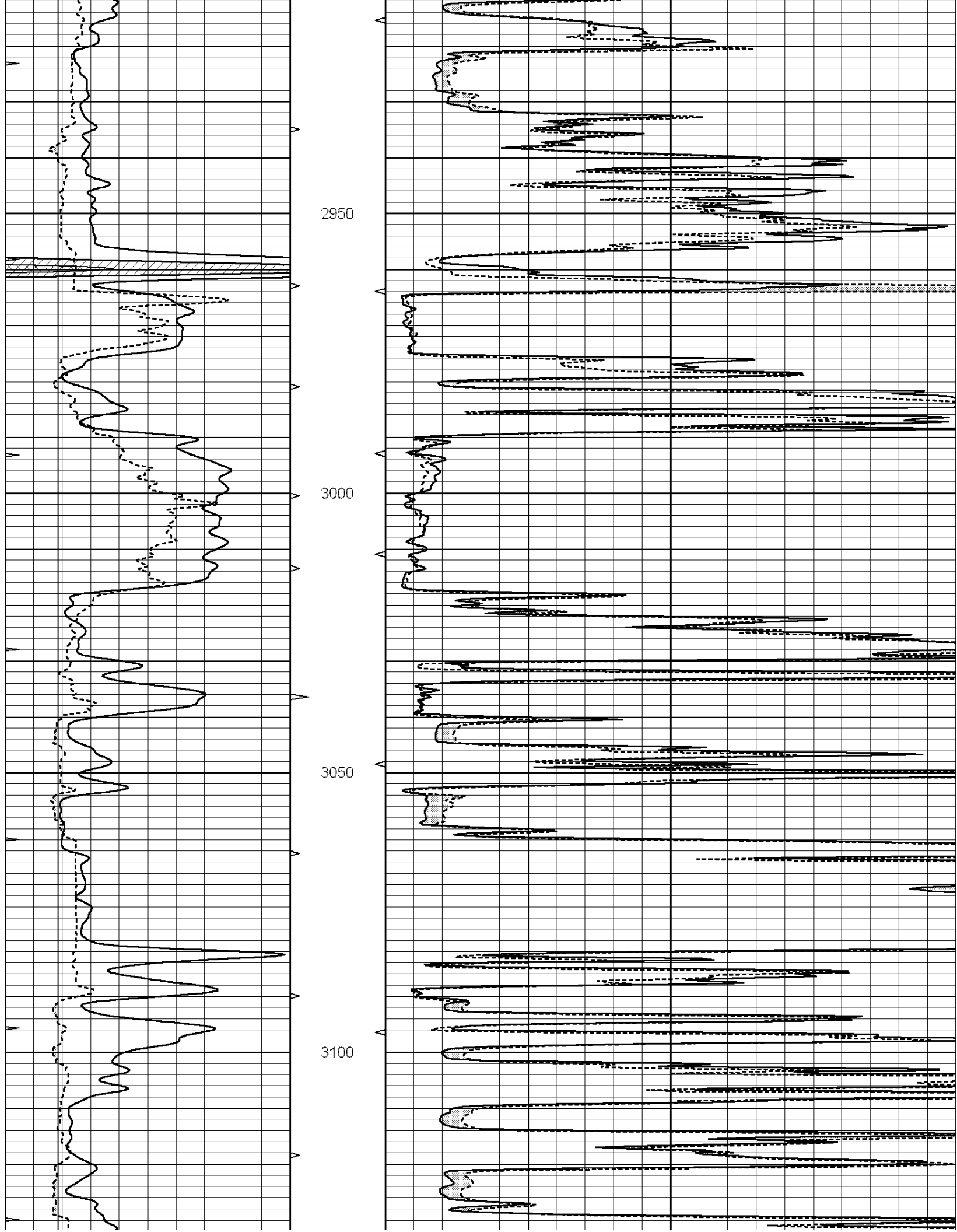
0	GAMMA RAY (GAPI)	150
6	MELCAL (in)	16
0	MINMK	20

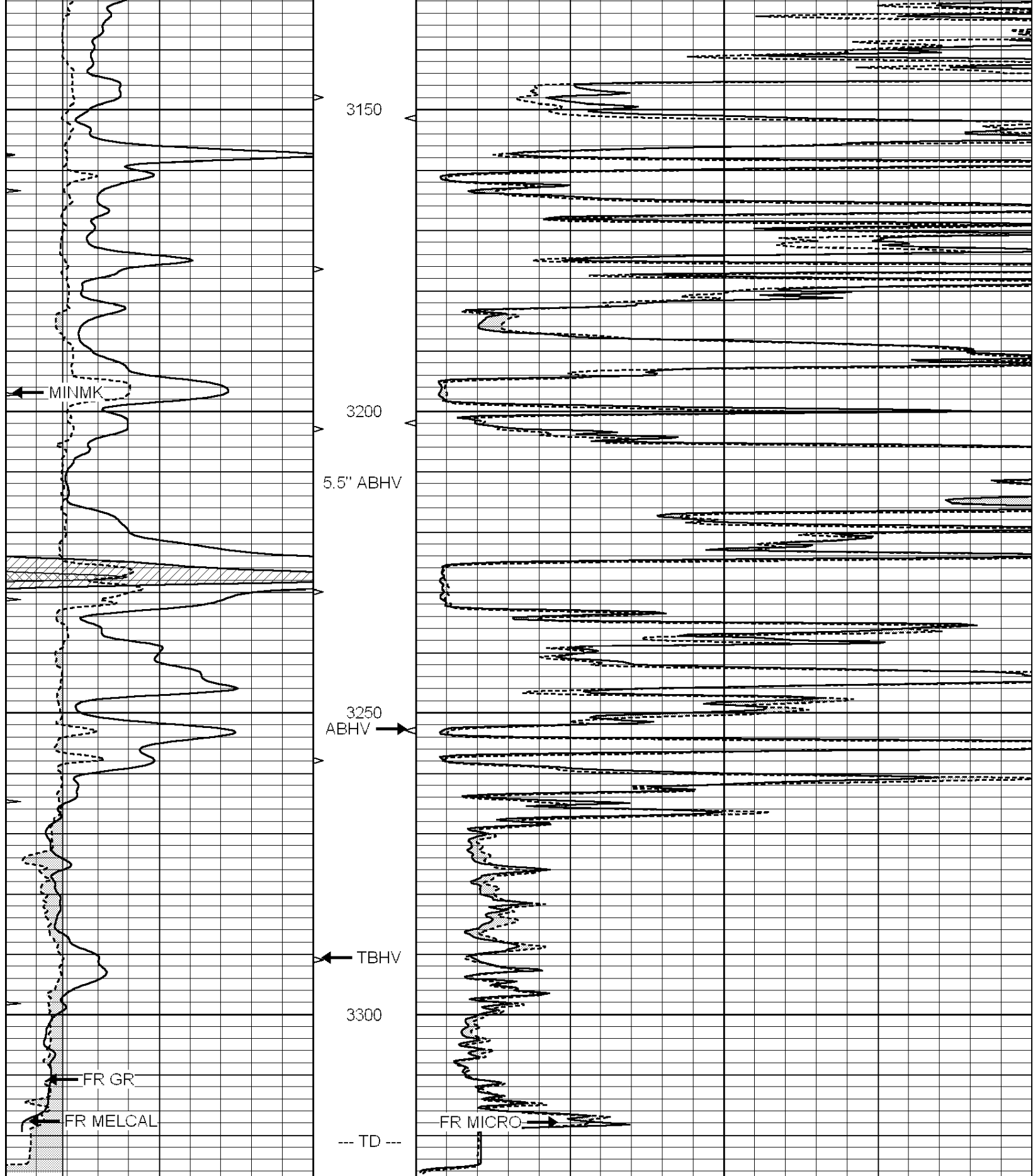
0	MEL1.5 (Ohm-m)	40
0	MEL2.0 (Ohm-m)	40











0	GAMMA RAY (GAPI)	150
6	MELCAL (in)	16
0	MINMK	20

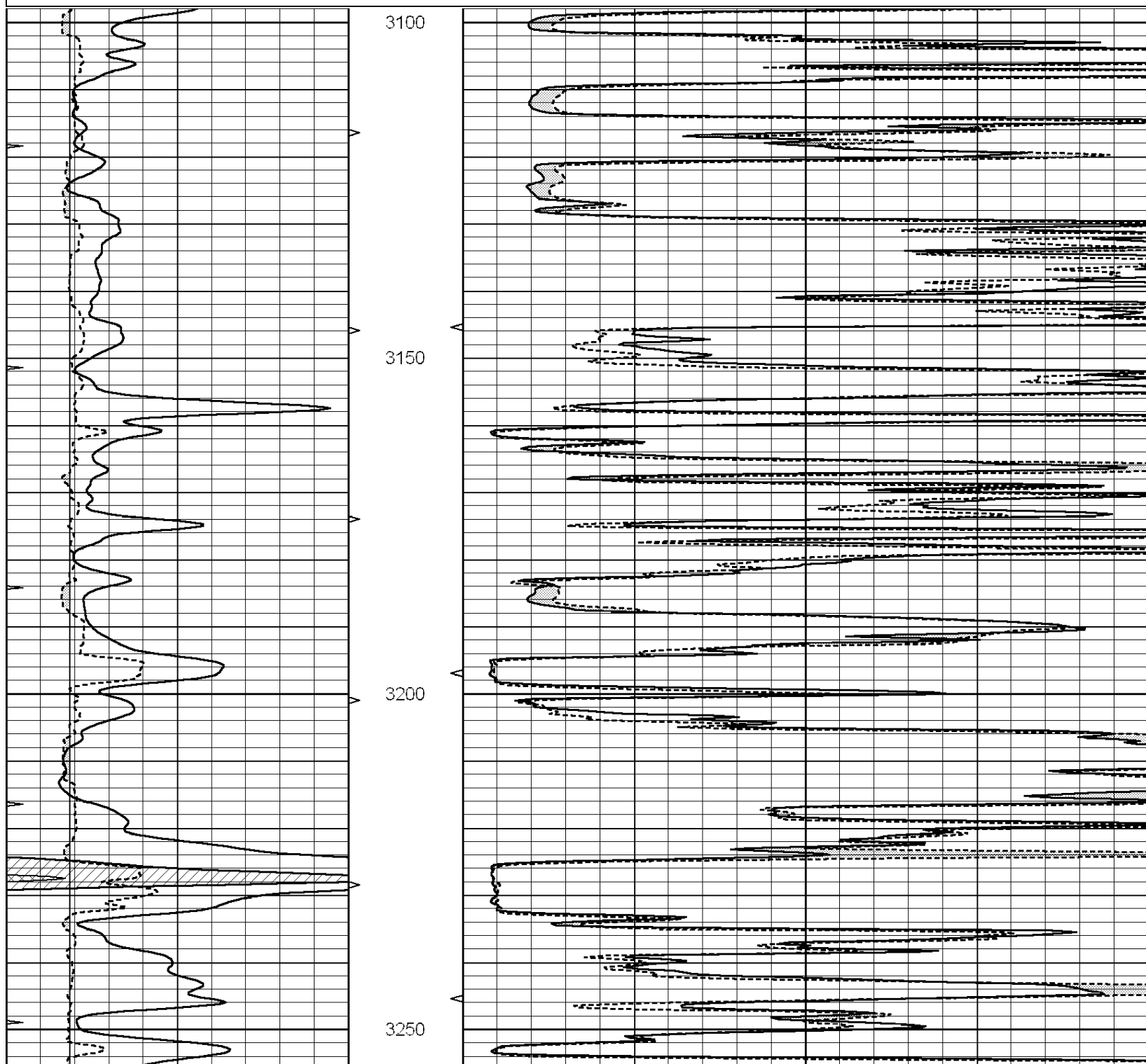
0	MEL1.5 (Ohm-m)	40
0	MEL2.0 (Ohm-m)	40

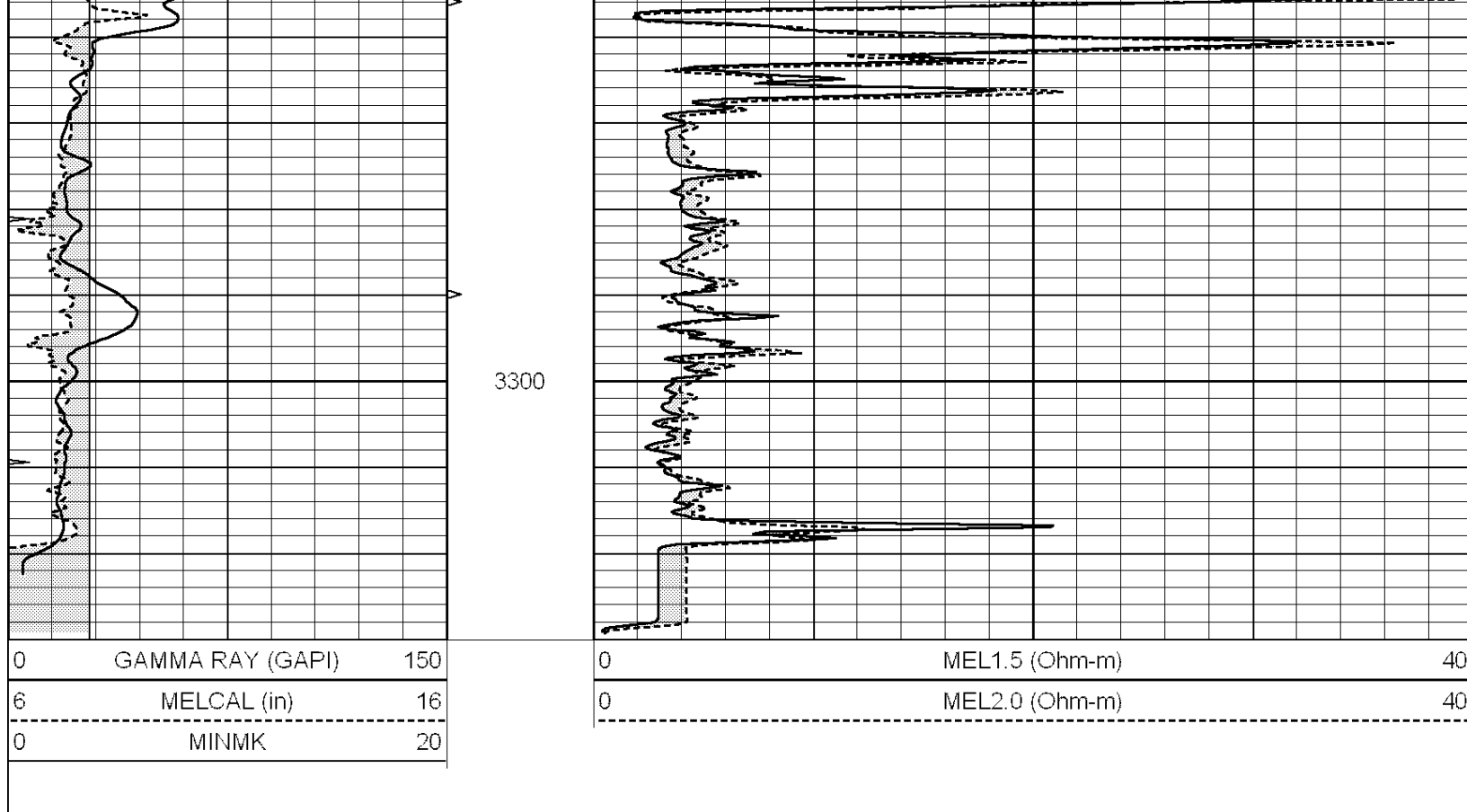
# REPEAT SECTION

Database File: 24678ddn.db  
 Dataset Pathname: pass4.A  
 Presentation Format: \_micro  
 Dataset Creation: Fri Jun 27 15:23:46 2014 by Calc Open-Cased 090629  
 Charted by: Depth in Feet scaled 1:240

0	GAMMA RAY (GAPI)	150
6	MELCAL (in)	16
-----		
0	MINMK	20

0	MEL1.5 (Ohm-m)	40
0	MEL2.0 (Ohm-m)	40
-----		





### Calibration Report

Database File: 24678ddn.db  
 Dataset Pathname: pass5.A  
 Dataset Creation: Fri Jun 27 15:58:42 2014 by Calc Open-Cased 090629

#### MICRO Calibration Report

Serial Number:	MICRO5	
Tool Model:	PROBE	
Performed:	Fri Jun 27 15:46:43 2014	
Caliper Calibration:	Gain=3.500	Offset=-5.950
References	Low Cal 6.200	High Cal 15.000
Readings	3.737	5.660
1.5" Calibration:	Gain=19.000	Offset=0.300
References	Low Cal 0.000	High Cal 20.000
Readings	0.025	1.009
2" Calibration:	Gain=24.500	Offset=0.500
References	Low Cal 0.000	High Cal 20.000
Readings	0.014	0.802

#### Gamma Ray Calibration Report

Serial Number:	GR5	
Tool Model:	OPEN	
Performed:	Fri Jun 27 15:26:18 2014	
Calibrator Value:	1.0	GAPI

Background Reading:	0.0	cps
Calibrator Reading:	1.0	cps
Sensitivity:	0.3500	GAPI/cps