

**COMPLETION  
& PRODUCTION  
SERVICES CO.**

**COMPENSATED  
DENSITY / NEUTRON  
LOG**

Company TREK AEC, INC.  
Well DRISCOLL #2  
Field GIDEON  
County RUSSELL State KANSAS

Company TREK AEC, INC.  
Well DRISCOLL #2  
Field GIDEON  
County RUSSELL  
State KANSAS

Location: API #: 15-167-23968  
1000' FNL & 1420' FEL  
SEC 8 TWP 15S RGE 14W  
Permanent Datum GROUND LEVEL Elevation 1828  
Log Measured From KELLY BUSHING 5' A.G.L.  
Drilling Measured From KELLY BUSHING  
Other Services  
DIL  
MICRO  
Elevation  
K.B. 1833  
D.F.  
G.L. 1828

Date	6-27-14
Run Number	ONE
Depth Driller	3320
Depth Logger	3321
Bottom Logged Interval	3297
Top Log Interval	2300
Casing Driller	471
Casing Logger	471
Bit Size	7.875
Type Fluid in Hole	CHEMICAL MUD
Density / Viscosity	9.2 / 60
pH / Fluid Loss	10.0 / 13.2
Source of Sample	FLOWLINE
Rim @ Meas. Temp	0.40 @ 85F
Rmf @ Meas. Temp	0.30 @ 85F
Rmc @ Meas. Temp	0.48 @ 85F
Source of Rmf / Rmc	FLOWLINE
Rim @ BHT	310 @ 108F
Time Circulation Stopped	2 HOURS
Time Logger on Bottom	1:15 P.M.
Maximum Recorded Temperature	108F
Equipment Number	860
Location	HAYS, KS.
Recorded By	RUPP
Witnessed By	AARON YOUNG

<<< Fold Here >>>

All interpretations are opinions based on inferences from electrical or other measurements and we cannot and do not guarantee the accuracy or correctness of any interpretation, and we shall not, except in the case of gross or willful negligence on our part, be liable or responsible for any loss, costs, damages, or expenses incurred or sustained by anyone resulting from any interpretation made by any of our officers, agents or employees. These interpretations are also subject to our general terms and conditions set out in our current Price Schedule.

Comments

NABORS COMPLETION & PRODUCTION SERVICES  
785-628-6395  
THANK YOU FOR YOUR BUSINESS  
DIRECTIONS: RUSSELL, 6S TO RIVER BRIDGE, 2W ON WALTERS LANE, 1S, W INTO.

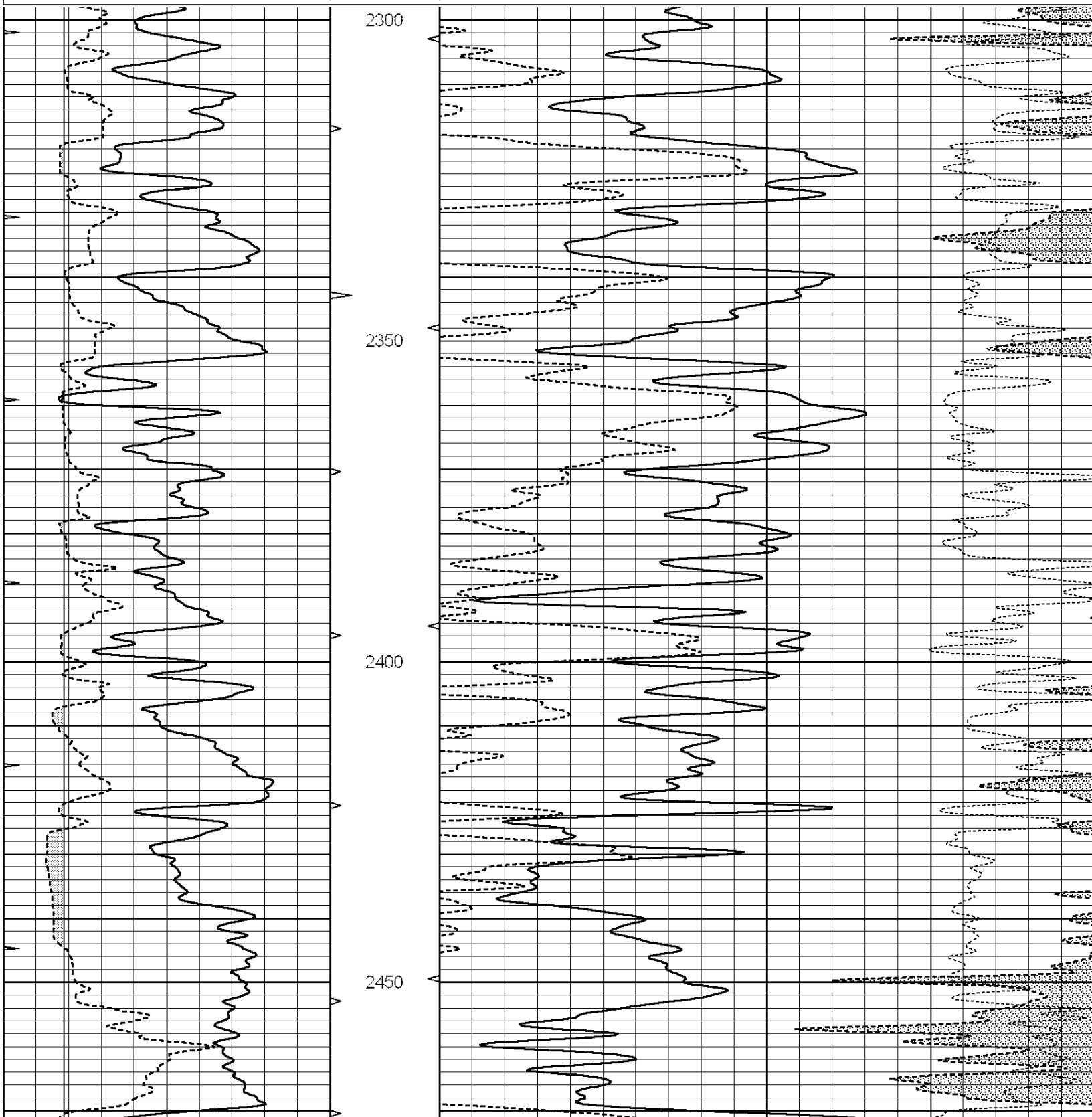


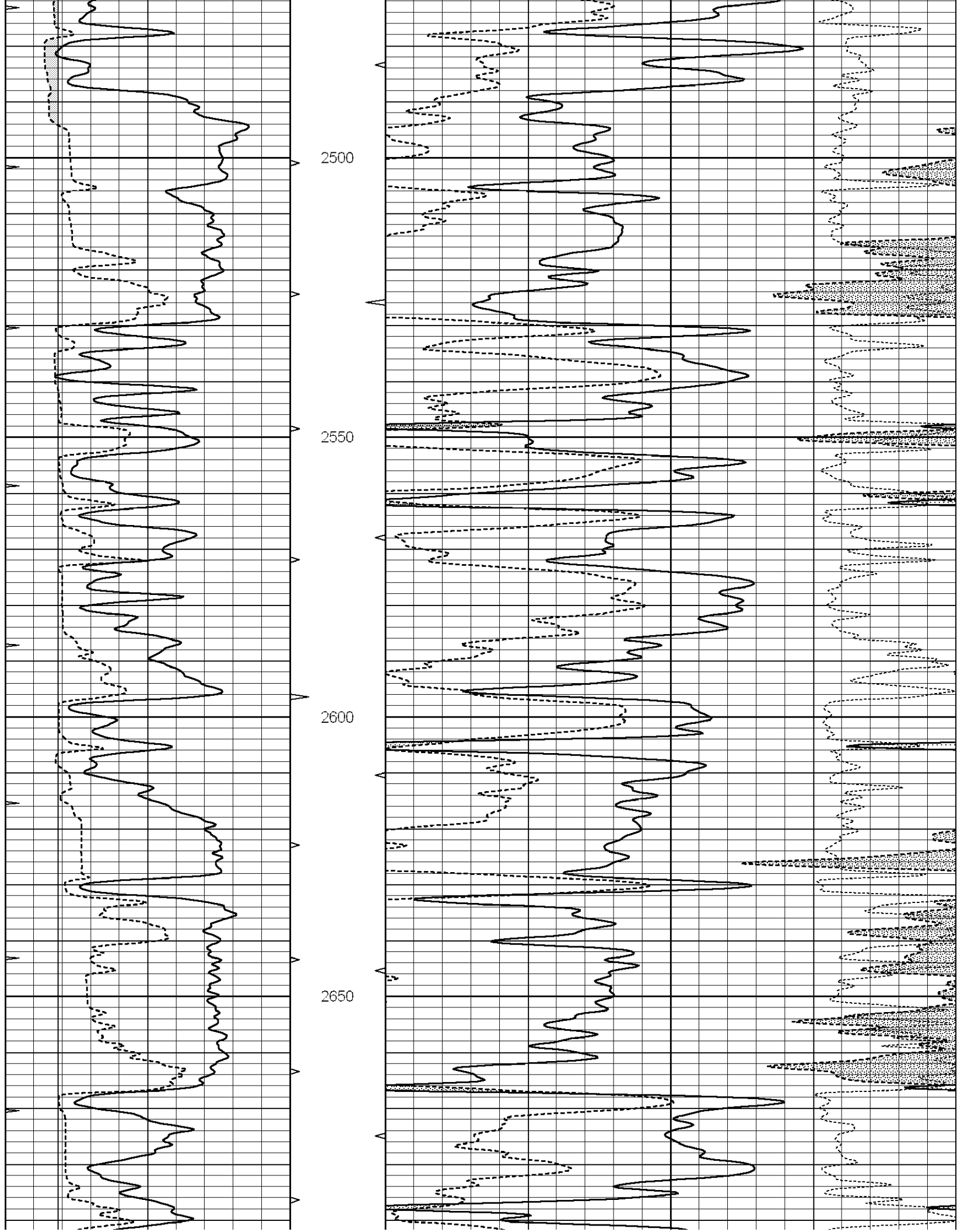
**COMPLETION  
& PRODUCTION**

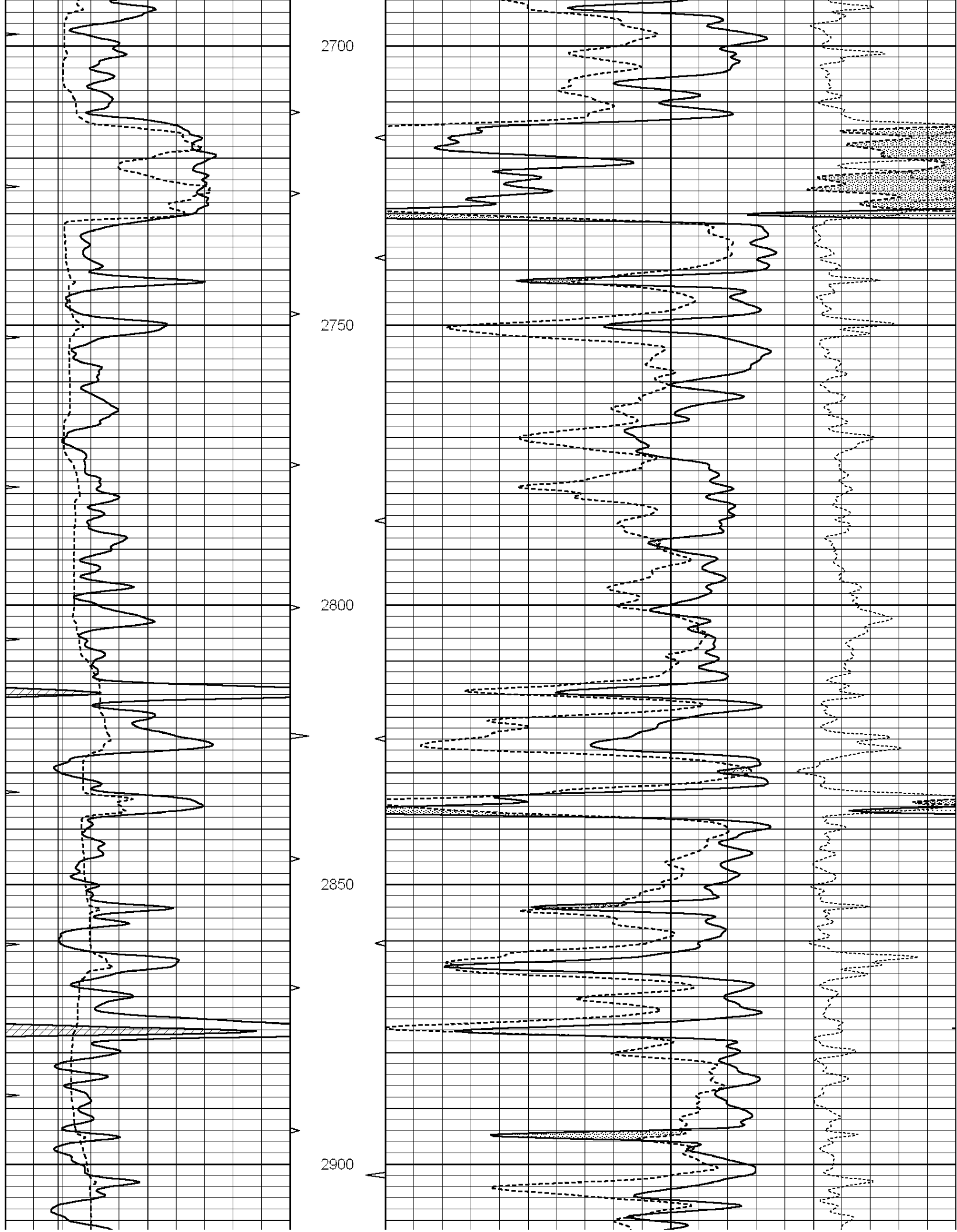
**MAIN SECTION**

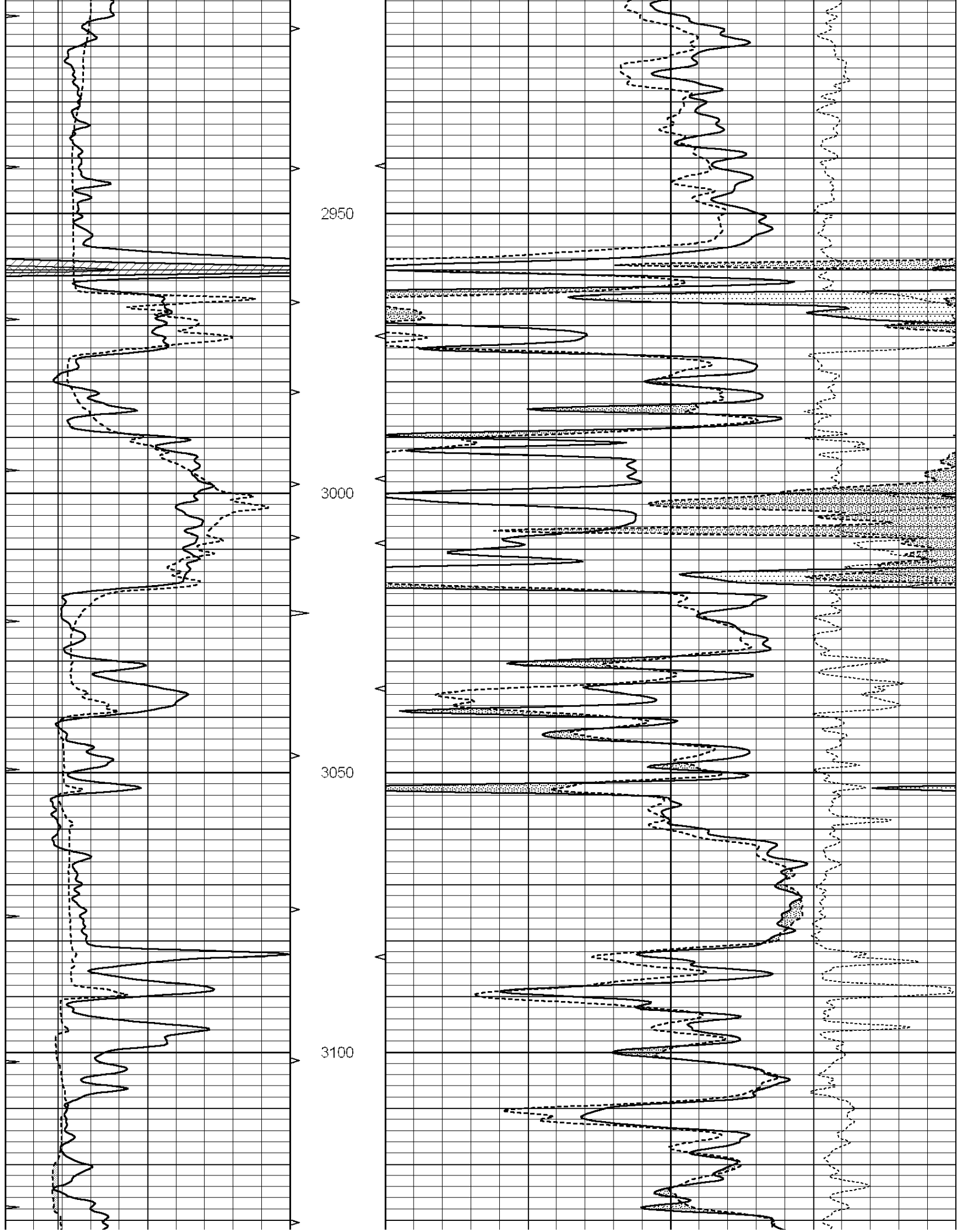
Database File: 24678ddn.db  
 Dataset Pathname: pass3.1A  
 Presentation Format: \_den\_neu  
 Dataset Creation: Fri Jun 27 14:26:15 2014 by Calc Open-Cased 090629  
 Charted by: Depth in Feet scaled 1:240

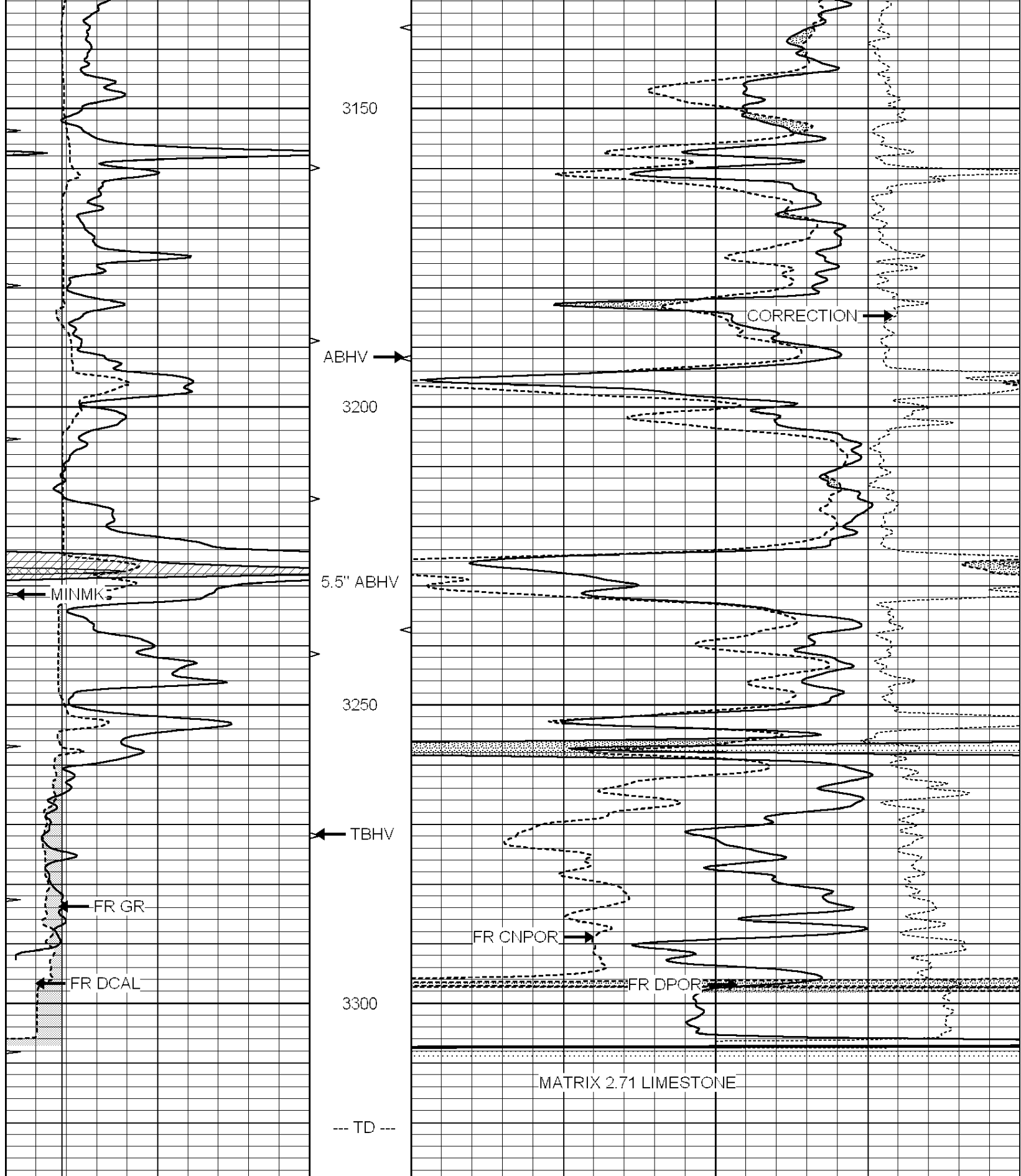
0	GAMMA RAY (GAPI)	150	ABHV	30	COMPENSATED DENSITY (pu)	-10
6	CALIPER (in)	16	10 (ft3)	0 30	COMPENSATED NEUTRON (pu)	-10
0	MINMK	20	TBHV		-0.25 CORRECTION (g/cc)	0.25
			0 (ft3)	10		











0	GAMMA RAY (GAPI)	150	ABHV	30	COMPENSATED DENSITY (pu)	-10	
6	CALIPER (in)	16	10 (ft3)	0 30	COMPENSATED NEUTRON (pu)	-10	
0	MINMK	20	TBHV		-0.25	CORRECTION (g/cc)	0.25
			0 (ft3)	10			

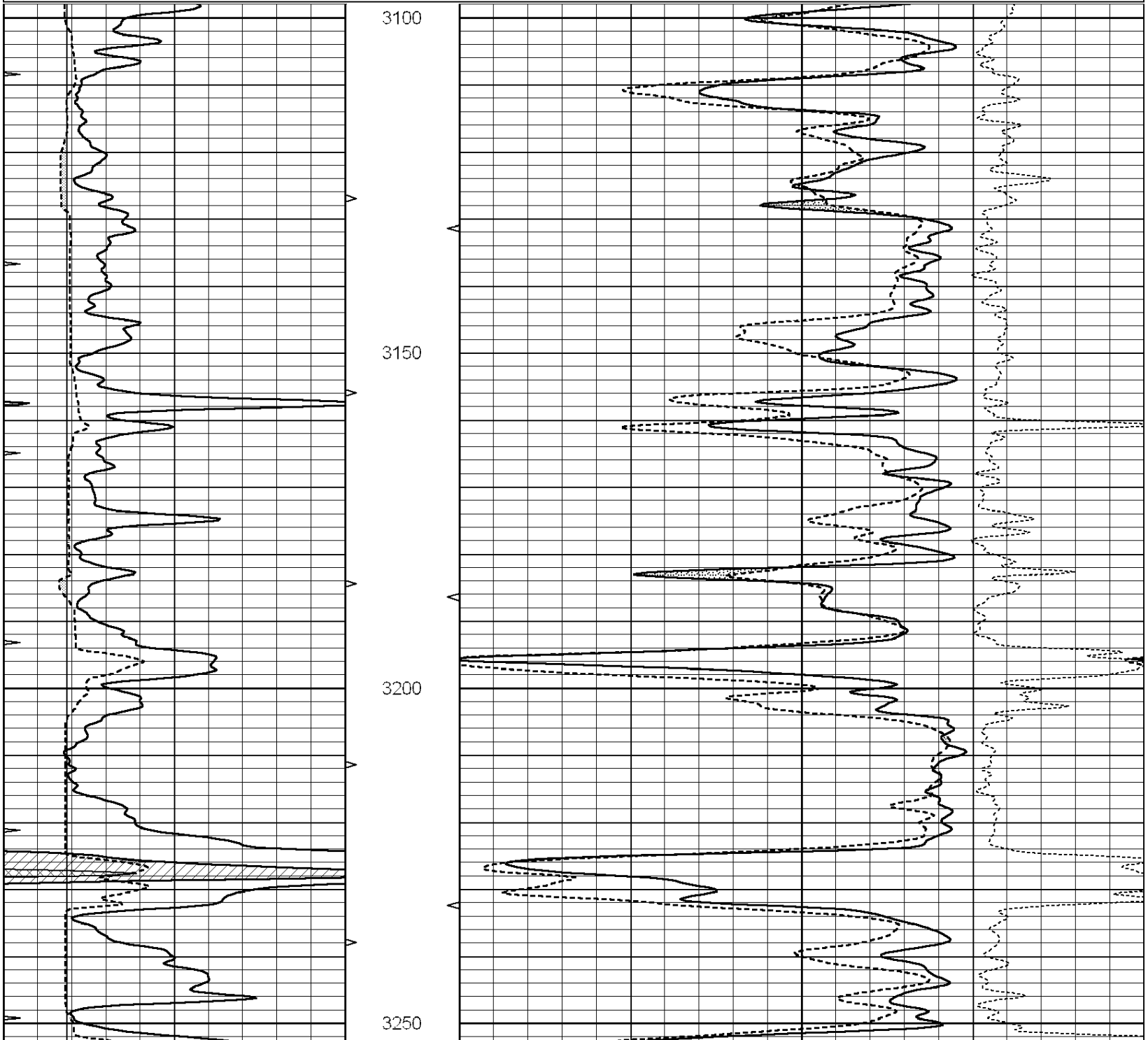


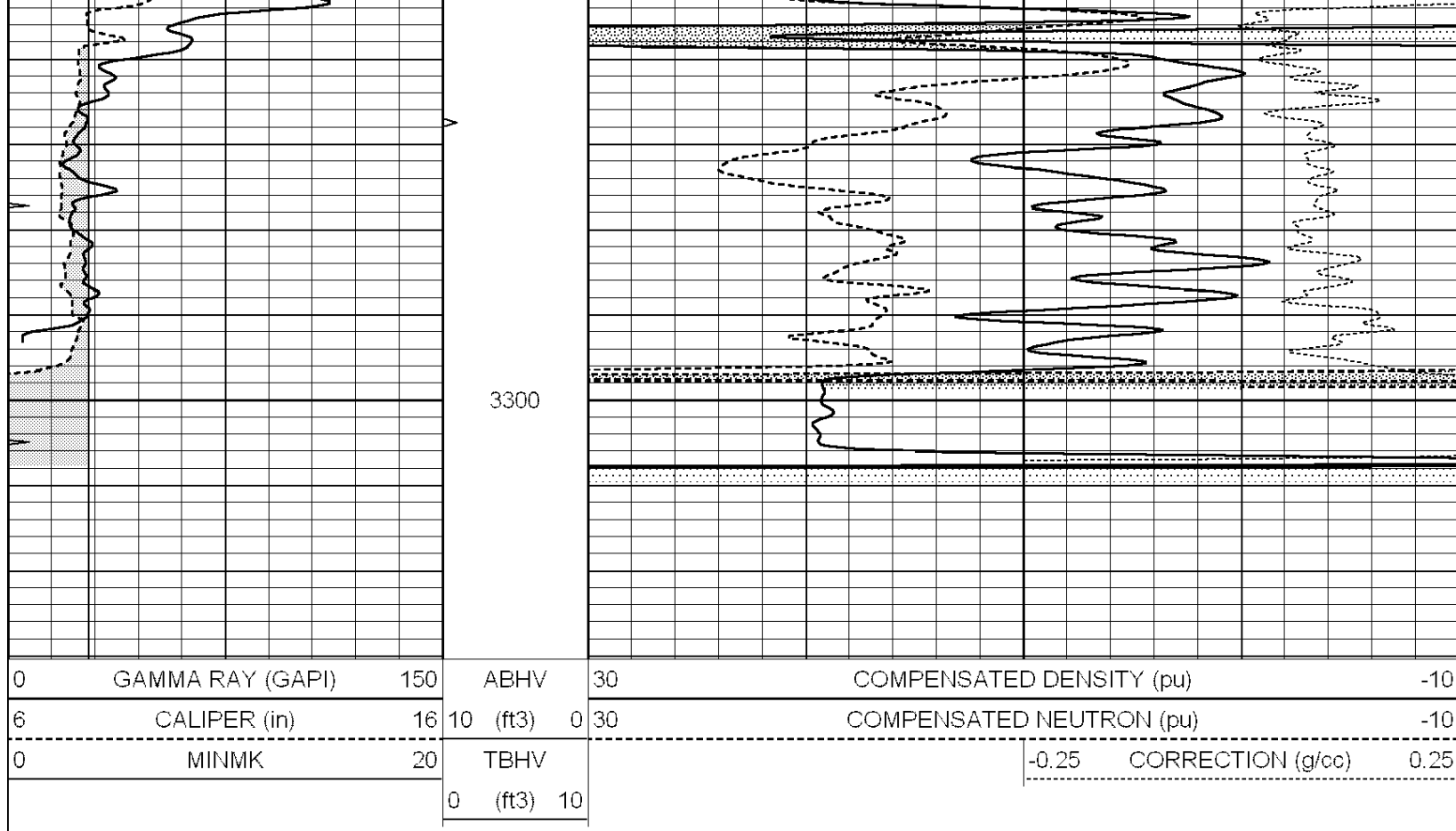
**COMPLETION  
& PRODUCTION  
SERVICES CO.**

# REPEAT SECTION

Database File: 24678ddn.db  
 Dataset Pathname: pass2.A  
 Presentation Format: \_den\_neu  
 Dataset Creation: Fri Jun 27 13:59:04 2014 by Calc Open-Cased 090629  
 Charted by: Depth in Feet scaled 1:240

0	GAMMA RAY (GAPI)	150	ABHV	30	COMPENSATED DENSITY (pu)	-10
6	CALIPER (in)	16	10 (ft3)	0 30	COMPENSATED NEUTRON (pu)	-10
0	MINMK	20	TBHV		-0.25 CORRECTION (g/cc)	0.25
			0 (ft3)	10		





### Calibration Report

Database File: 24678ddn.db  
 Dataset Pathname: pass3.1A  
 Dataset Creation: Fri Jun 27 14:26:15 2014 by Calc Open-Cased 090629

### Dual Induction Calibration Report

Serial-Model: PROBE7-DILG  
 Surface Cal Performed: Fri Jun 27 14:00:42 2014  
 Downhole Cal Performed: Sat Jan 19 19:51:38 2013  
 After Survey Verification Performed: Sat Jan 19 19:51:38 2013

#### Surface Calibration

Loop:	Readings			References			Results	
	Air	Loop		Air	Loop		m	b
Deep	0.793	0.790	V	0.000	400.000	mmho/m	490.000	12.500
Medium	0.992	1.002	V	0.000	464.000	mmho/m	530.000	-32.000
Internal:	Zero	Cal		Zero	Cal		m	b
Deep	0.041	0.642	V	0.000	400.000	mmho/m	664.874	-27.011
Medium	0.035	0.802	V	0.000	464.000	mmho/m	604.936	-21.367

#### Downhole Calibration

	Readings			References			Results	
	Zero	Cal		Zero	Cal		m'	b'
Deep	135384.000	27094.500	mmho/m	135400.000	27082.400	mmho/m	1.000	-19.259
Medium	-47330.100	-9381.740	mmho/m	-47327.100	-9389.280	mmho/m	1.000	-10.154
LL3		7.322	V		1400.000	Ohm-m		
		0.038	V		20.000	Ohm-m		
		-7.273	V		4000.000	mmho-m		

After Survey Verification

	Readings			Targets			Results	
	Zero	Cal		Zero	Cal		m'	b'
Deep	0.000	0.000	mmho/m	135384.000	27094.500	mmho/m	1.000	0.000
Medium	0.000	0.000	mmho/m	-47330.100	-9381.740	mmho/m	1.000	0.000
LL3		0.000	Ohm-m		1400.000	Ohm-m		
		0.000	Ohm-m		20.000	Ohm-m		
		0.000	mmho-m		4000.000	mmho-m		

Compensated Density Calibration Report

Serial-Model: GEAR2-GEARHART  
 Source / Verifier: 147 / 147  
 Master Calibration Performed: Fri Jun 27 11:55:27 2014

Master Calibration

	Density		Far Detector	Near Detector	
Magnesium	1.710	g/cc	942.85	578.84	cps
Aluminum	2.580	g/cc	210.04	397.59	cps
Spine Angle = 75.96			Density/Spine Ratio = 0.562		
	Size		Reading		
Small Ring	8.00	in	1.80	V	
Large Ring	14.00	in	2.69	V	

Compensated Neutron Calibration Report

Serial Number: 080621  
 Tool Model: Probe

PRE-SURVEY VERIFICATION

Detector	Readings	Measured	Target
Short Space	cps		
Long Space	cps	pu	pu

POST-SURVEY VERIFICATION

Detector	Readings	Measured	Target
Short Space	cps		
Long Space	cps	pu	pu

Gamma Ray Calibration Report

Serial Number: 080328  
 Tool Model: Probe1  
 Performed: Fri Jun 27 12:59:13 2014

Calibrator Value: 1.0 GAPI

Background Reading: 0.0 cps  
 Calibrator Reading: 1.0 cps

Sensitivity: 0.2600 GAPI/cps