



Pioneer Energy Services

Sonic Cement  
Bond Log

API No.

1516723968

Company **Trek Resources**

Well **Driscoll #2**

Field **Gideon**

County **Russell**

State **Kansas**

Location

Sec: **8** Twp: **15S** Rge: **14W**

Other Services  
Mast Trailer

Permanent Datum Ground Level Elevation 1828  
 Log Measured From Kelly Bushing 5' Ft. Above Perm. Datum  
 Drilling Measured From Kelly Bushing

Elevation  
K.B. 1833  
D.F. 1828  
G.L. 1828

Run Number	One
Date Survey	7/11/14
Date Cementing	6/28/14
Type Cementing Operation	Primary
Depth Driller	3320
Depth Logger	3277
Logged Interval	3278 to 2250
Casing Driller	5.5 @ TD
Float Collar -- D.V. Tool	////
Squeeze Depth	////
Amount & Type Cement	////
Amount & Type Admix	////
Type Fluid In Hole	Water
Fluid Level	Full
Salinity PPM CL	////
Weight lb/gal -- Vis.	////
Approx. Logged Cement Top	2322
Calculated Cement Top	////
Max. Hole Temperature	110
Tool No.	RBT 3-5
Spacing Recorded	3-5'
Equipment -- Location	18 C Drilling Hays
Recorded By	C Drilling
Witnessed By	Mark Bieker

<<< Fold Here >>>

All interpretations are opinions based on inferences from electrical or other measurements and we cannot and do not guarantee the accuracy or correctness of any interpretation, and we shall not, except in the case of gross or willful negligence on our part, be liable or responsible for any loss, costs, damages, or expenses incurred or sustained by anyone resulting from any interpretation made by any of our officers, agents or employees. These interpretations are also subject to our general terms and conditions set out in our current Price Schedule.

Comments

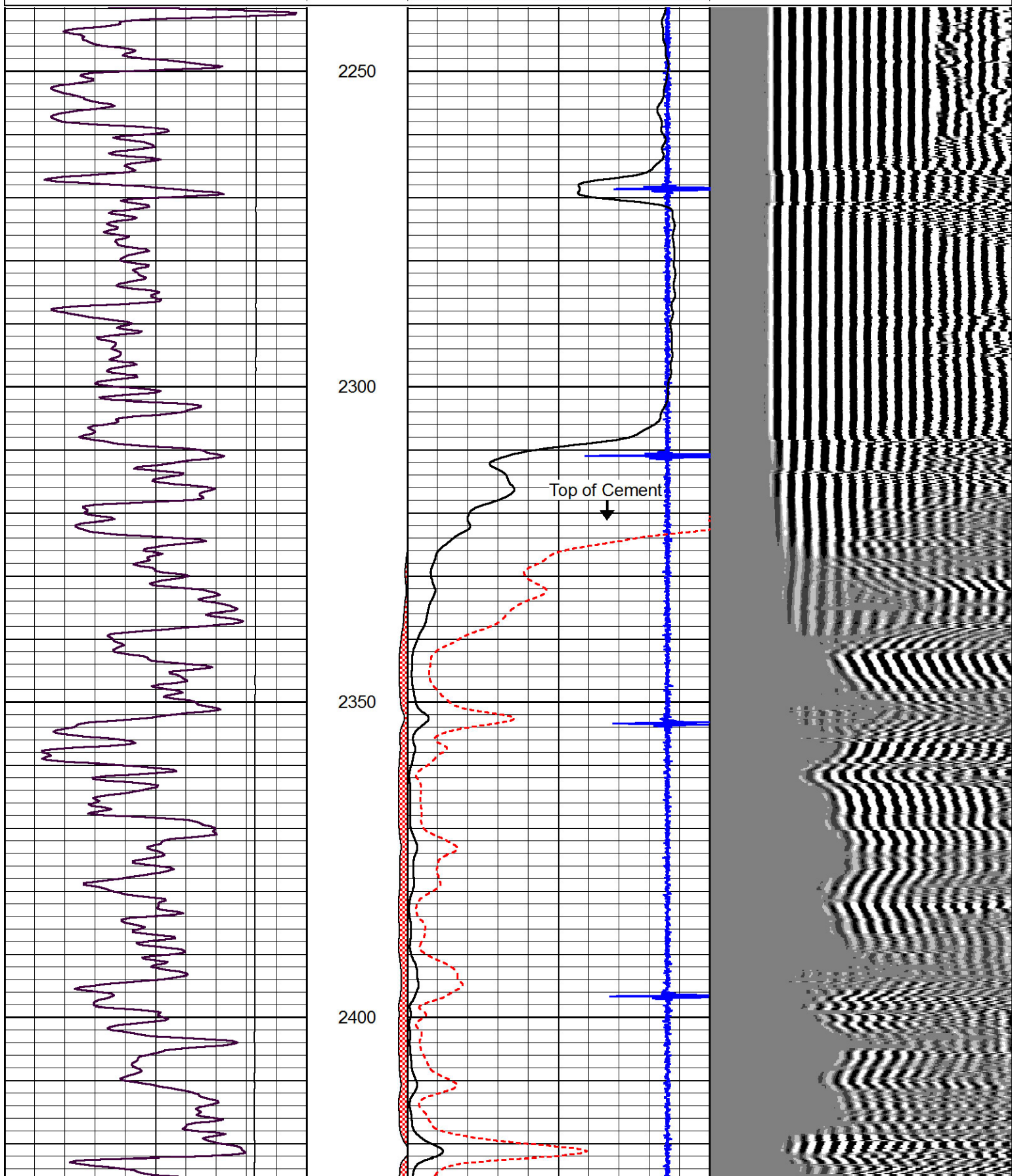
Thank you for using Pioneer Energy Services  
 785.625.3858  
 Russell, Ks  
 South to Walters Rd, West to T  
 1/4 South, North West North , Into

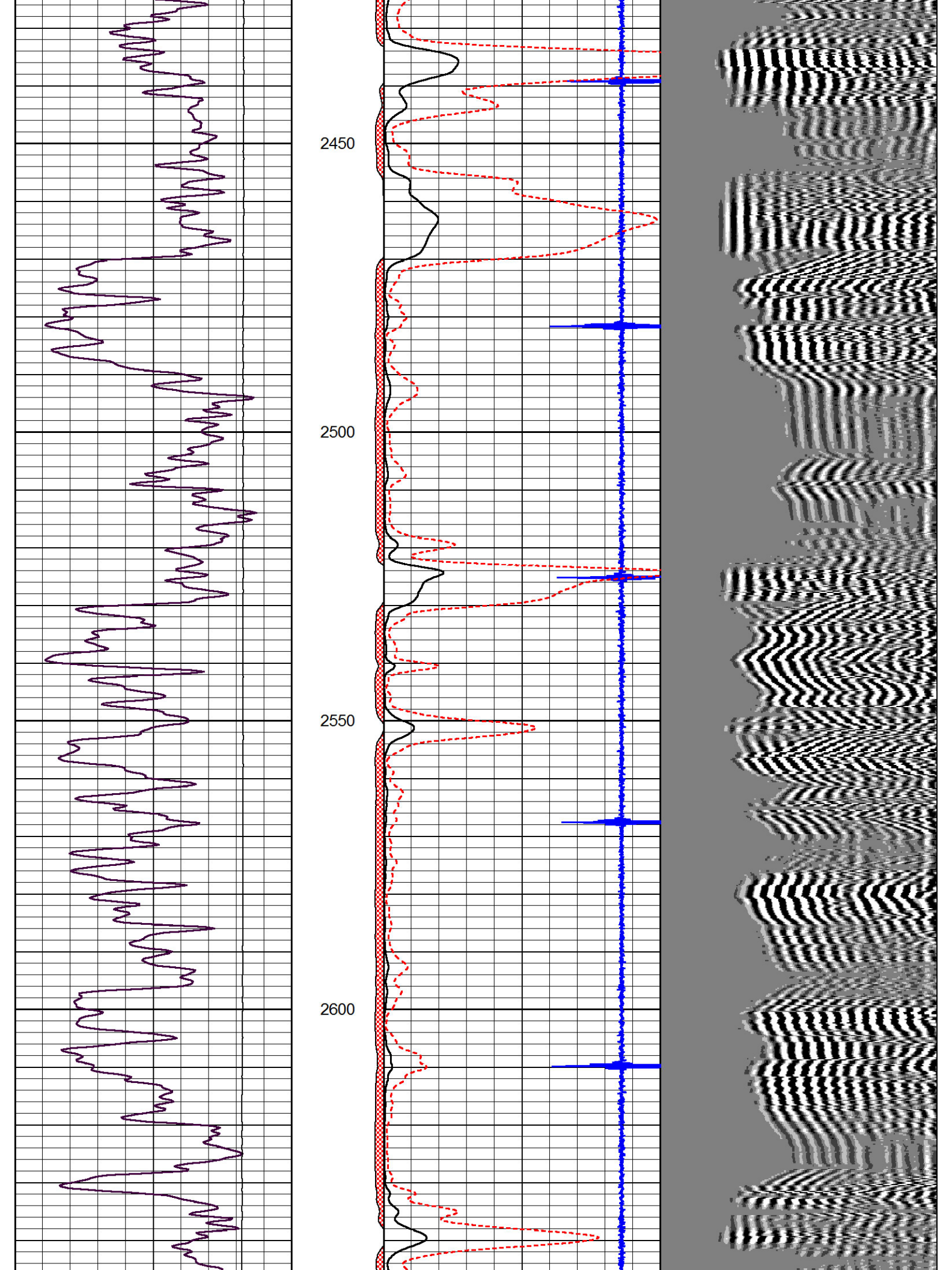


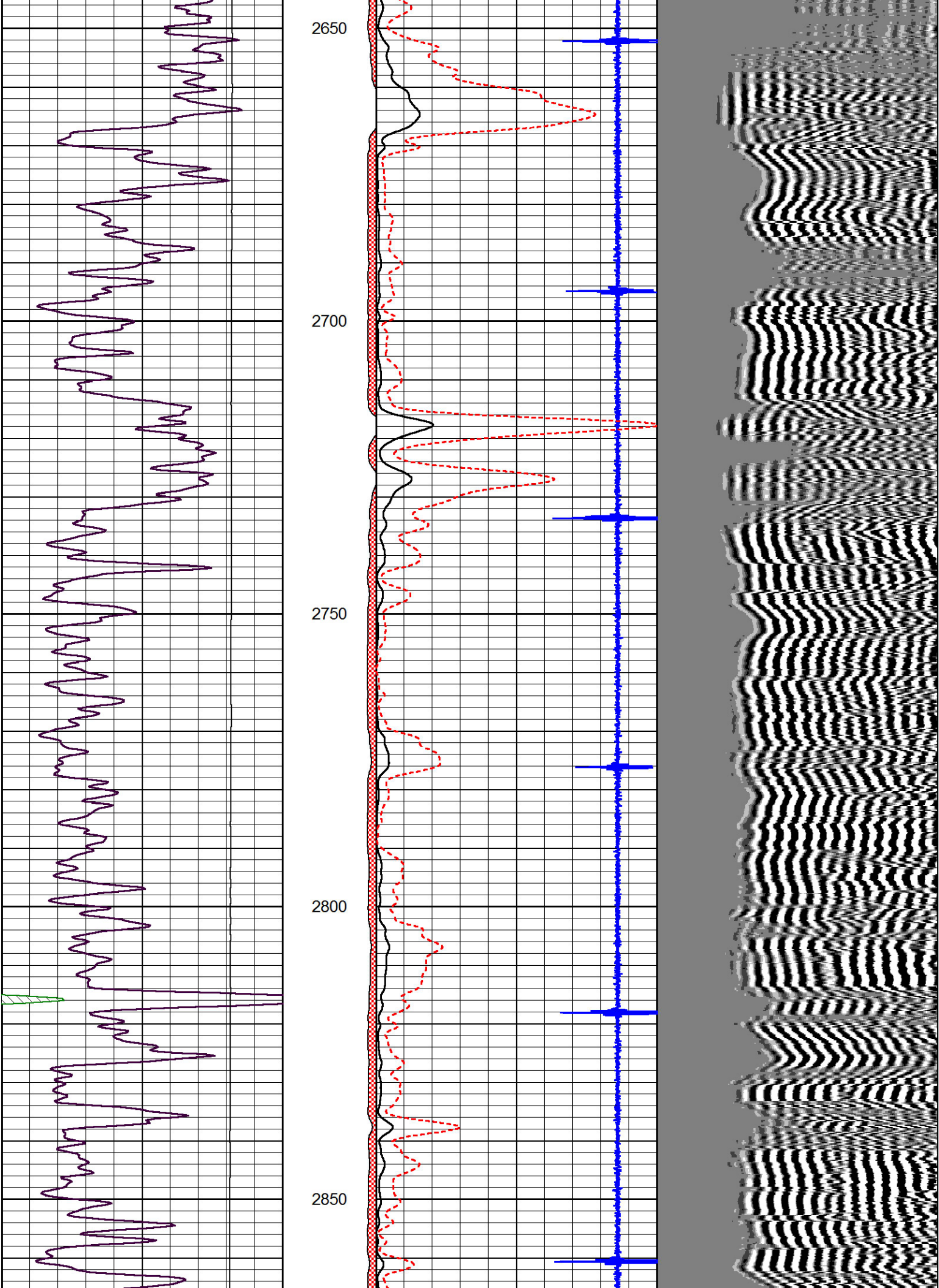
Main Pass

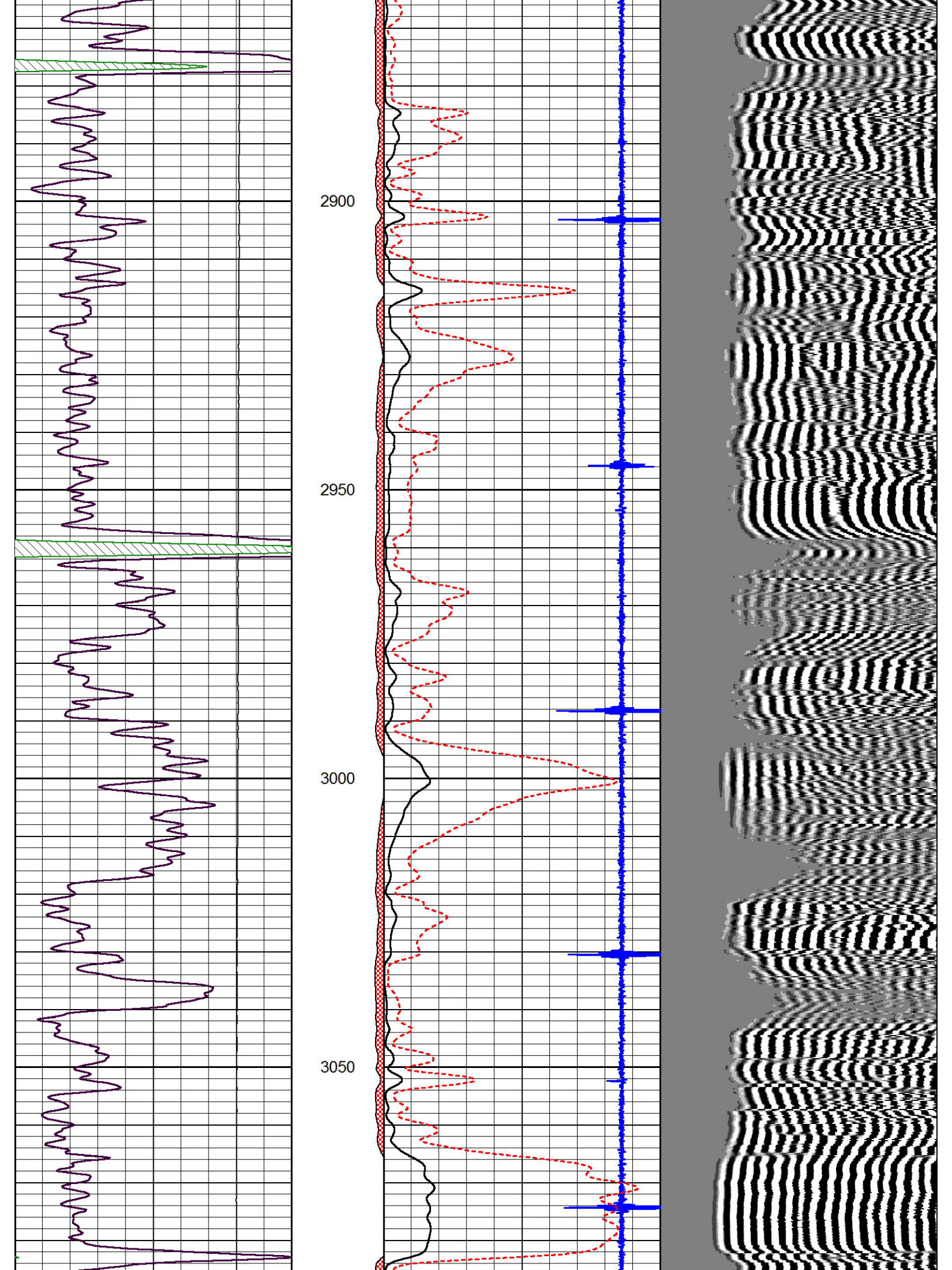
Database File: trek\_resources\_driscoll\_2.db  
 Dataset Pathname: pass3  
 Presentation Format: cblbr  
 Dataset Creation: Fri Jul 11 17:52:07 2014 by Log 7.0 B1  
 Charted by: Depth in Feet scaled 1:240

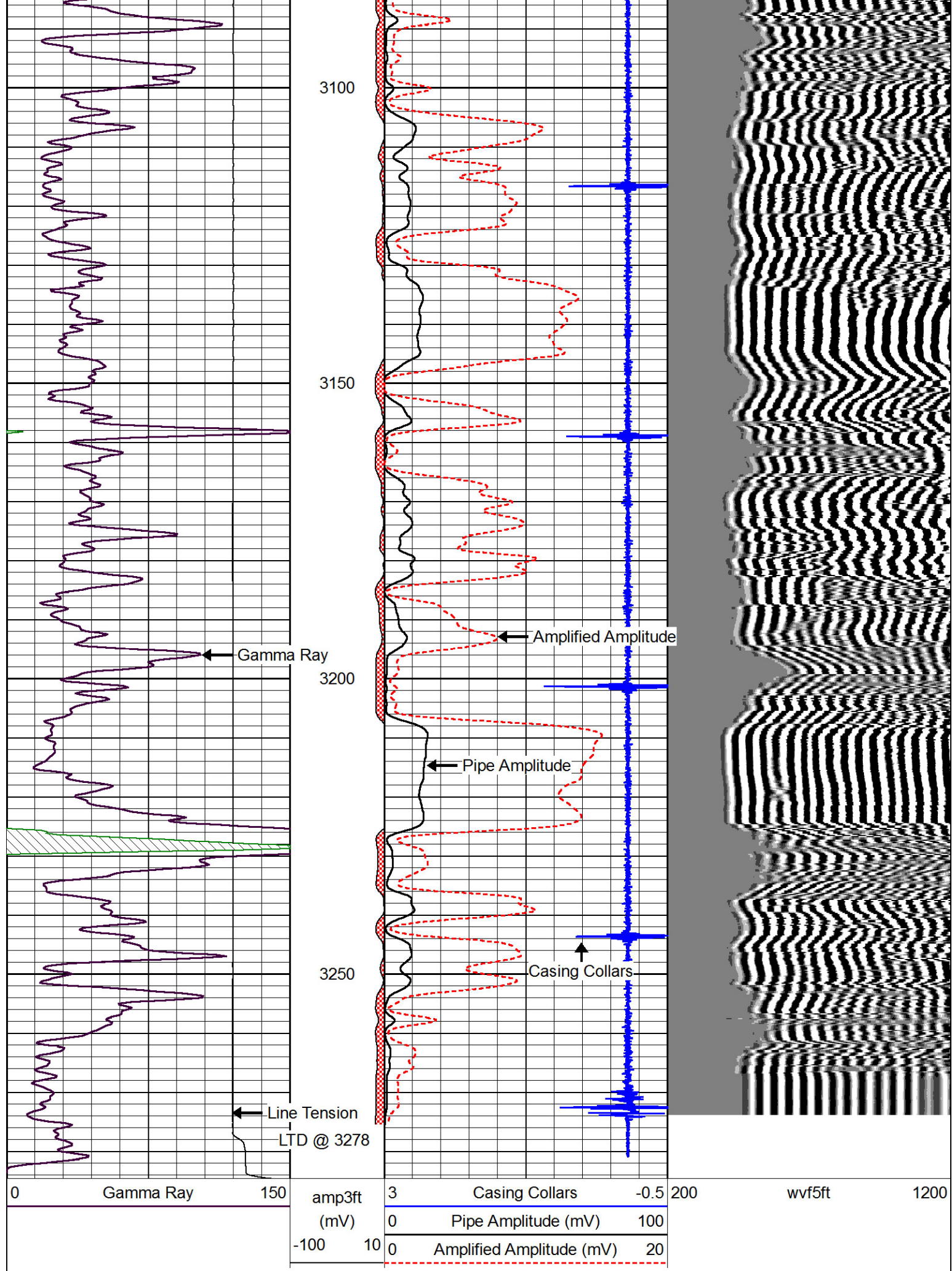
0	Gamma Ray	150	amp3ft	3	Casing Collars	-0.5	200	wvf5ft	1200
			(mV)	0	Pipe Amplitude (mV)	100			
			-100	10	0	Amplified Amplitude (mV)	20		











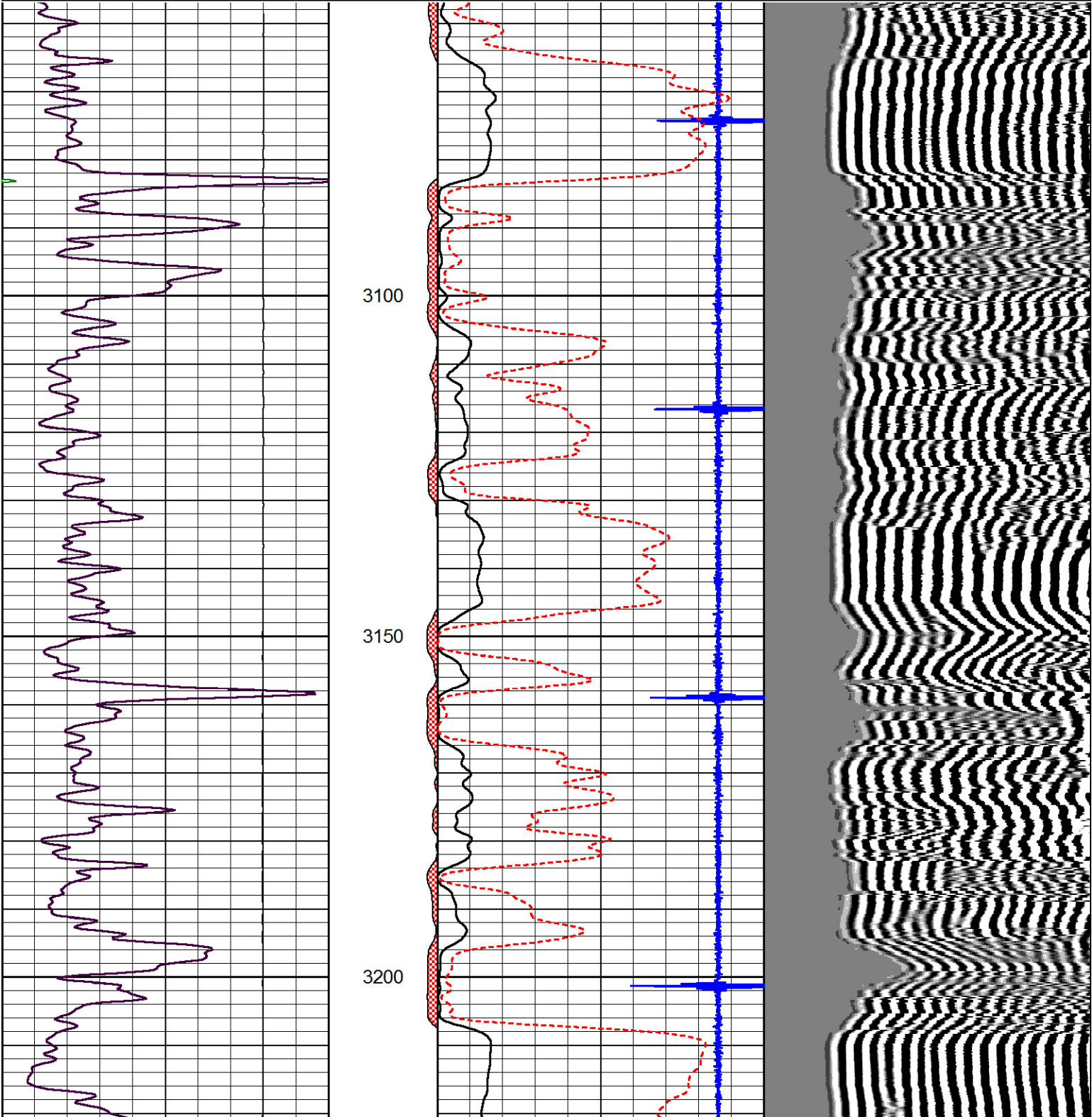


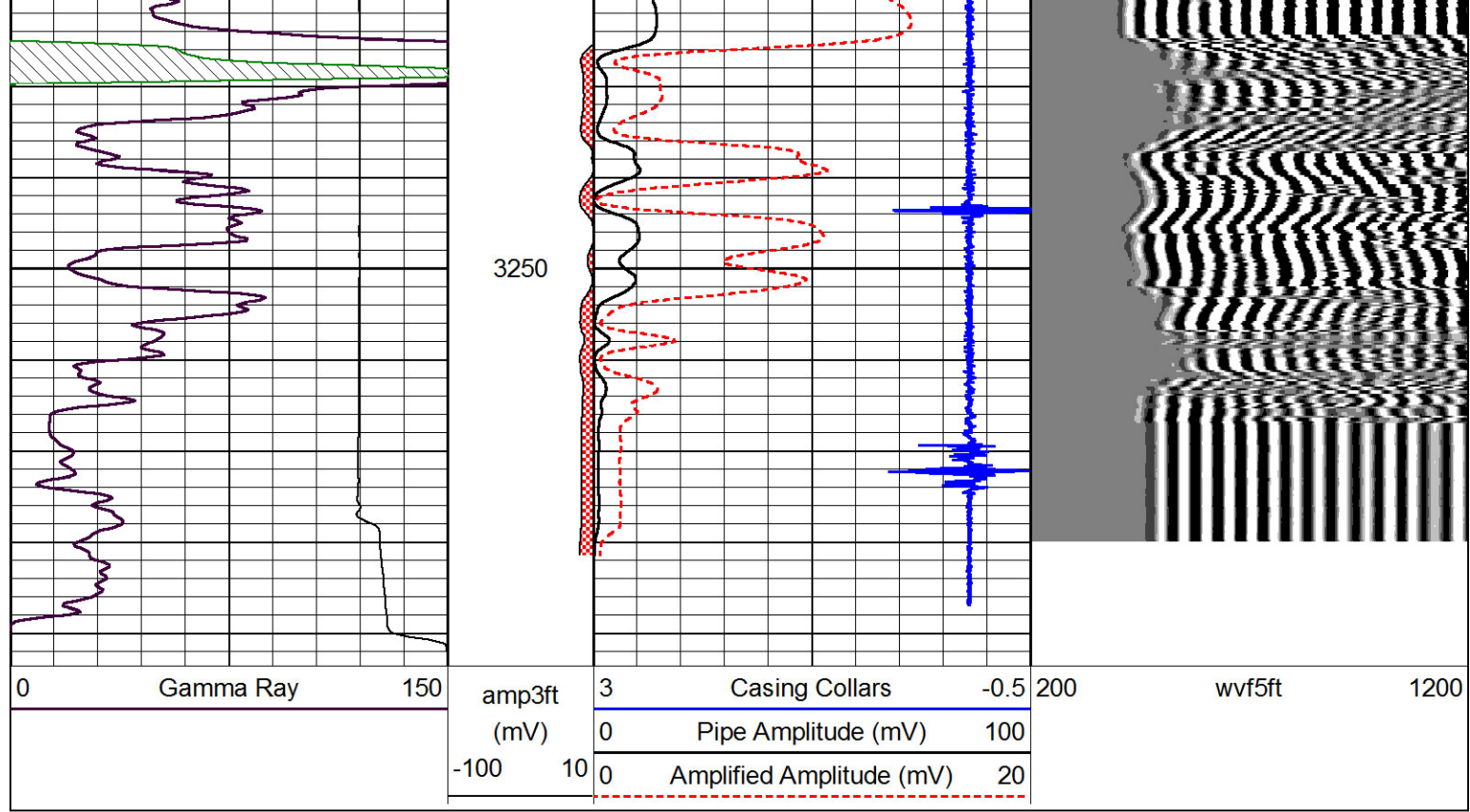
Pioneer Energy Services

# Repeat Section

Database File: trek\_resources\_driscoll\_2.db  
 Dataset Pathname: pass2  
 Presentation Format: cblbr  
 Dataset Creation: Fri Jul 11 17:45:47 2014 by Log 7.0 B1  
 Charted by: Depth in Feet scaled 1:240

0	Gamma Ray	150	amp3ft	3	Casing Collars	-0.5	200	wvf5ft	1200
			(mV)	0	Pipe Amplitude (mV)	100			
			-100	10	0	Amplified Amplitude (mV)	20		





0	Gamma Ray	150	amp3ft (mV)	3	Casing Collars	-0.5	200	wvf5ft	1200
			-100 10	0	Pipe Amplitude (mV)	100			
				0	Amplified Amplitude (mV)	20			