



**COMPLETION  
& PRODUCTION  
SERVICES CO.**

**COMPENSATED  
DENSITY/NEUTRON  
LOG**

Company RITCHIE EXPLORATION, INC.  
Well BODECKER 28 B #1  
Field WILDCAT  
County WICHITA  
State KANSAS

Company RITCHIE EXPLORATION, INC.  
Well BODECKER 28 B #1  
Field WILDCAT  
County WICHITA State KANSAS

Location: API # : 15-203-20261-00-00  
1475' FNL & 2200' FWL  
E2 - E2 - NW  
SEC 28 TWP 17S RGE 35W  
Permanent Datum GROUND LEVEL Elevation 3209  
Log Measured From KELLY BUSHING 5' A.G.L.  
Drilling Measured From KELLY BUSHING  
Other Services  
DIL  
Elevation  
K.B. 3214  
D.F. 3212  
G.L. 3209

Date	5/12/14		
Run Number	ONE		
Depth Driller	5050		
Depth Logger	5060		
Bottom Logged Interval	5036		
Top Log Interval	3800		
Casing Driller	8 5/8" @ 260		
Casing Logger	258'		
Bit Size	7 7/8"		
Type Fluid in Hole	CHEMICAL MUD	CHLORIDES 9,000 PPM	
Density / Viscosity	9.1/55		
pH / Fluid Loss	10.0/8.8		
Source of Sample	FLOWLINE		
Rm @ Meas. Temp	0.80 @ 69F		
Rmt @ Meas. Temp	0.60 @ 69F		
Rmc @ Meas. Temp	0.96 @ 80F		
Source of Rmf / Rmc	MEASUREMENT		
Rm @ BHT	0.44 @ 126F		
Time Circulation Stopped	2 HOURS		
Time Logger on Bottom			
Maximum Recorded Temperature	126F		
Equipment Number	4010		
Location	HAYS, KANSAS		
Recorded By	IAN MAAB		
Witnessed By	ADAM ELDANI		

<<< Fold Here >>>

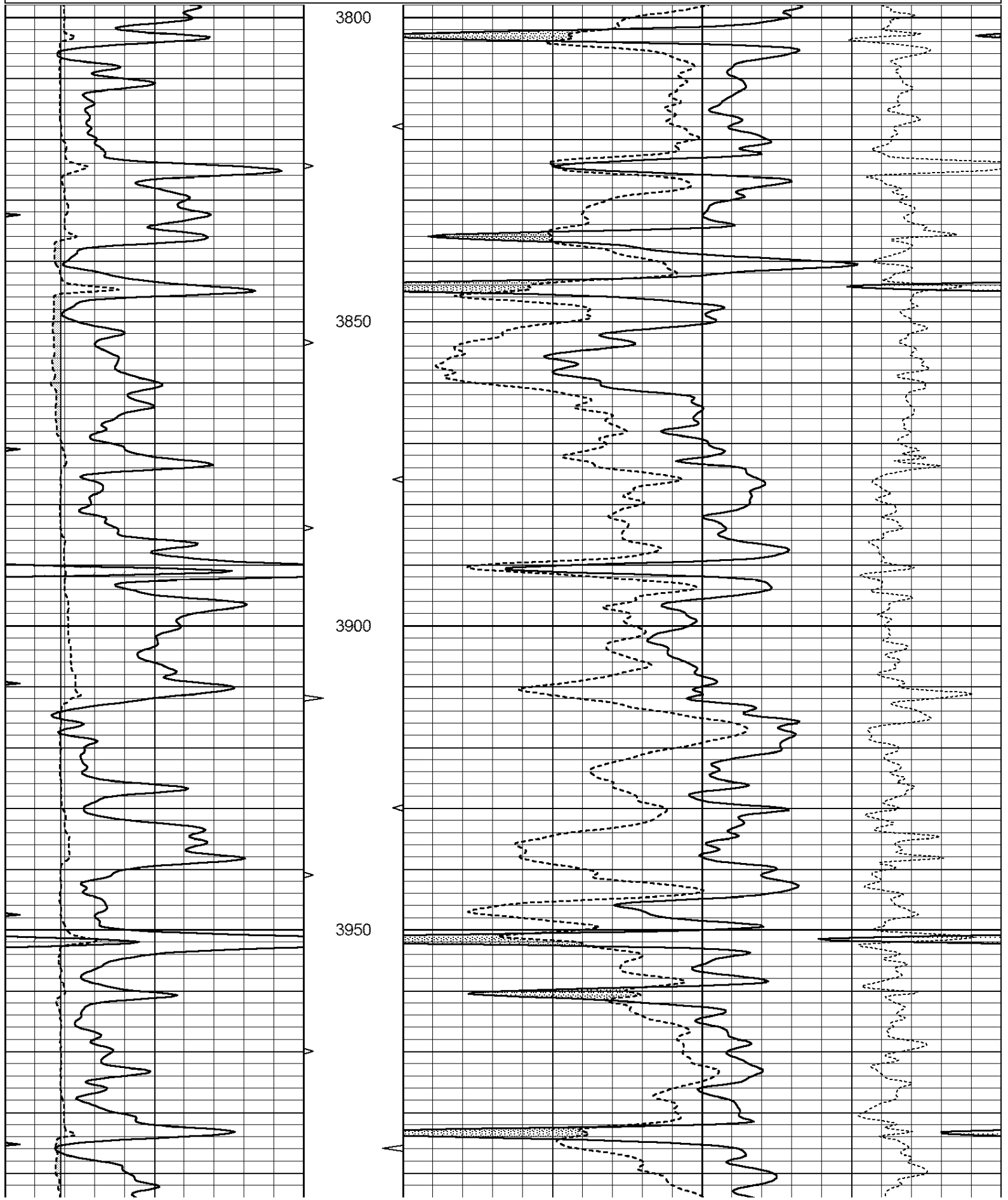
All interpretations are opinions based on inferences from electrical or other measurements and we cannot and do not guarantee the accuracy or correctness of any interpretation, and we shall not, except in the case of gross or willful negligence on our part, be liable or responsible for any loss, costs, damages, or expenses incurred or sustained by anyone resulting from any interpretation made by any of our officers, agents or employees. These interpretations are also subject to our general terms and conditions set out in our current Price Schedule.

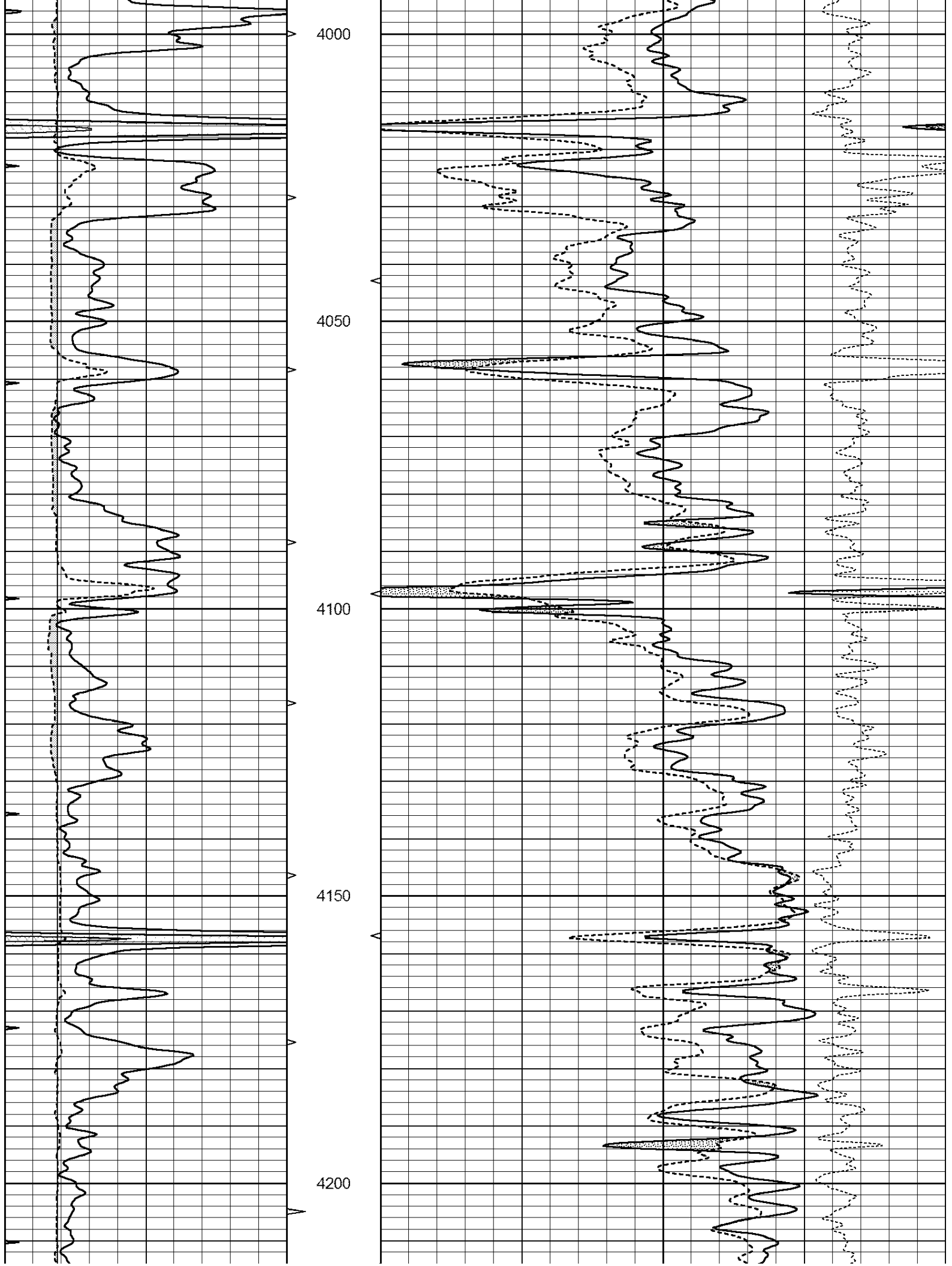
Comments

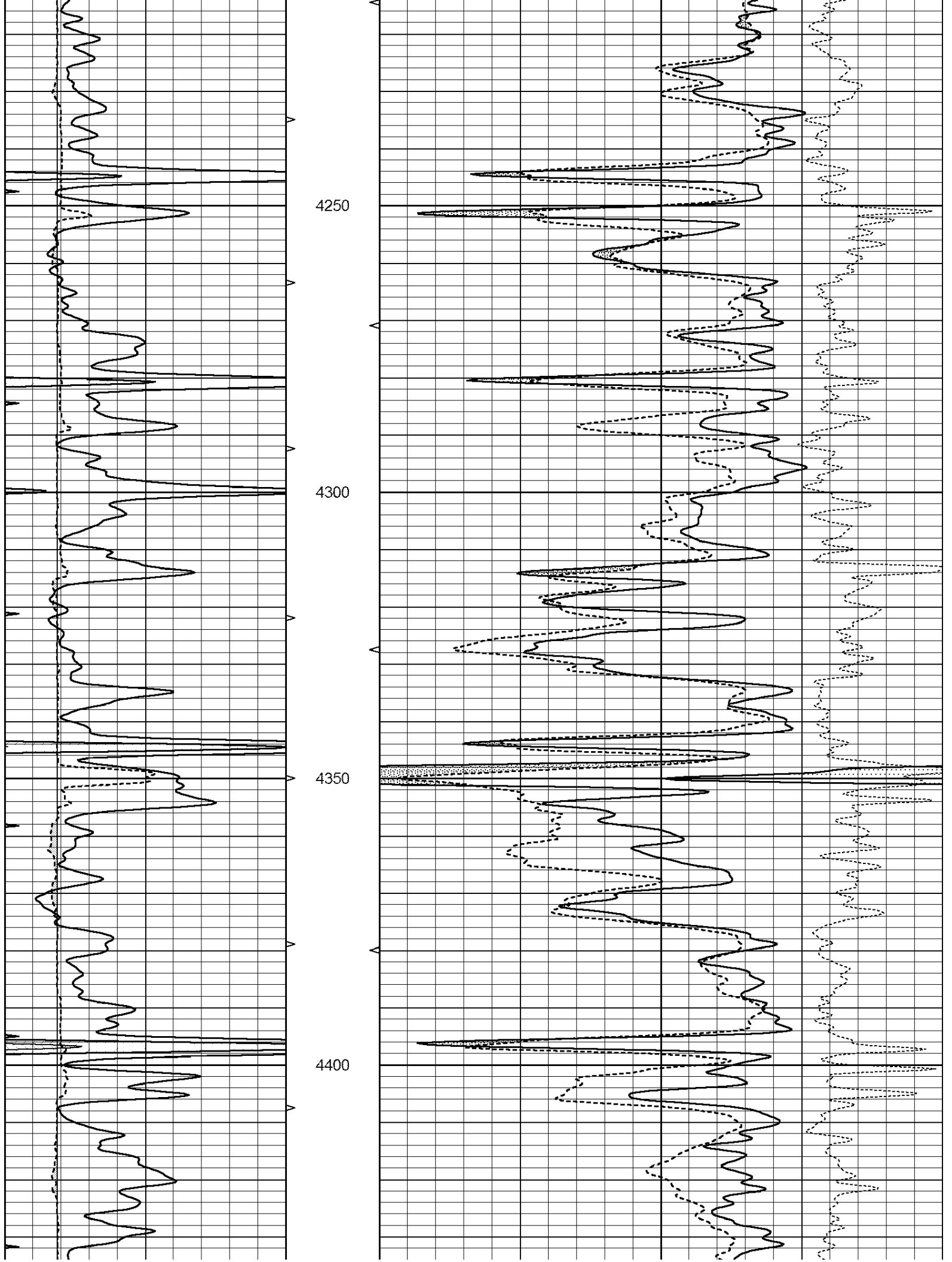
THANK YOU FOR USING NABORS, HAYS, KS. (785) 628-6395  
DIRECTIONS:  
SCOTT CITY , KS. - WEST TO MARIENTHAL RD. - NORTH 5 MILES - EAST 1 1/2 MILES - SOUTH INTO

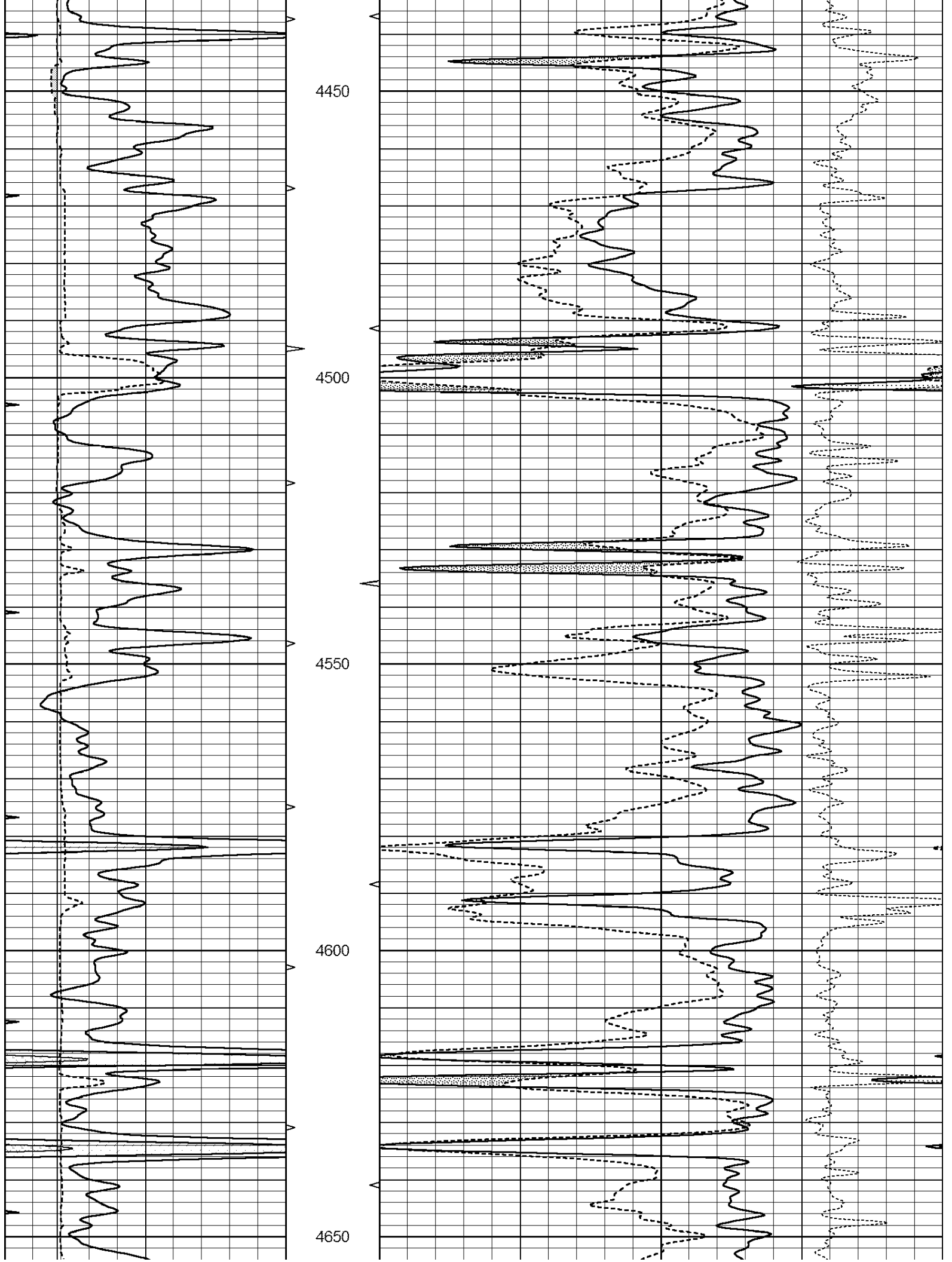
Database File: 24242ddn.db  
Dataset Pathname: pass5.9  
Presentation Format: den\_neu  
Dataset Creation: Mon May 12 11:59:30 2014  
Charted by: Depth in Feet scaled 1:240

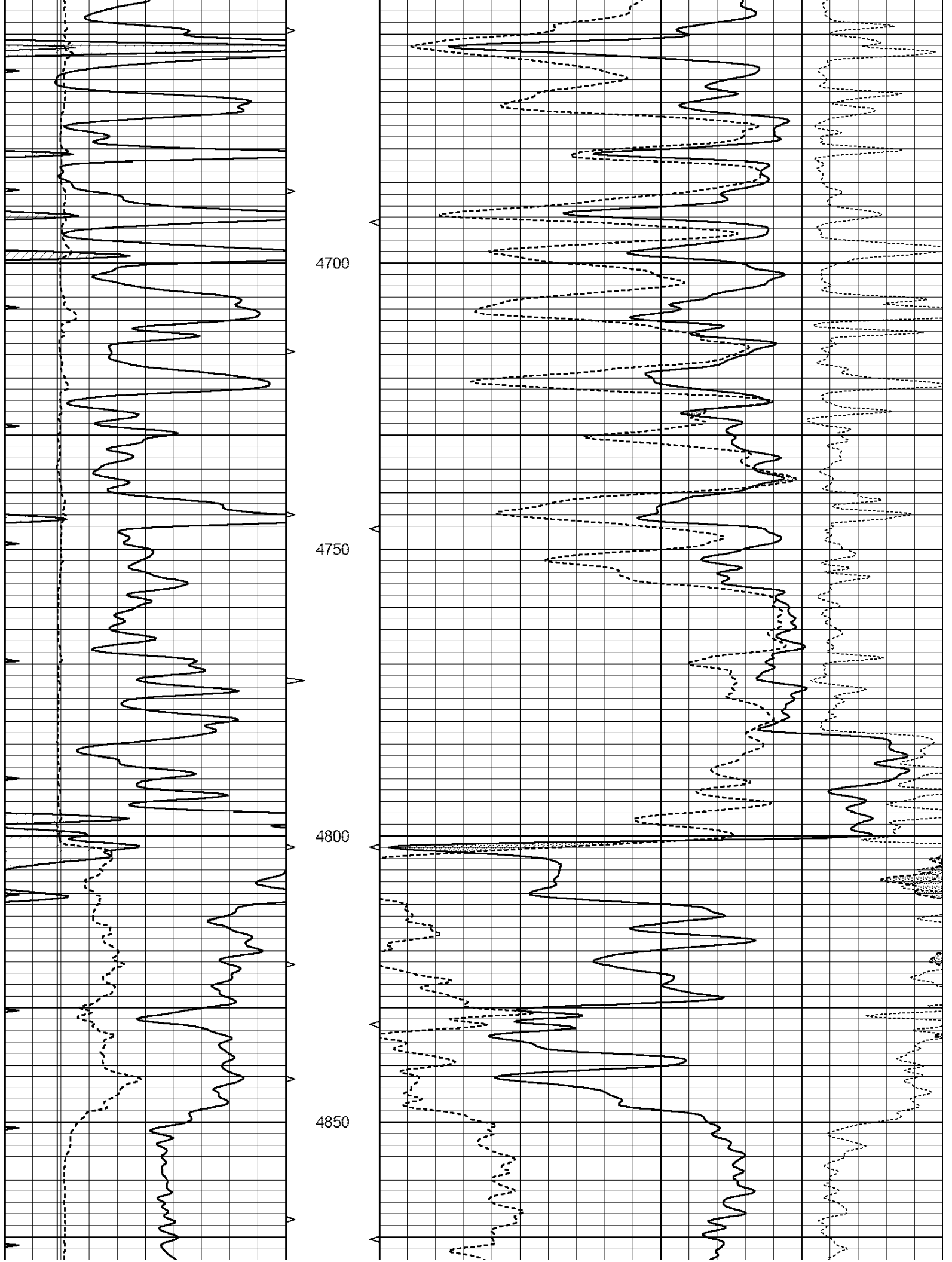
0	GAMMA RAY (GAPI)	150	ABHV	30	COMPENSATED DENSITY (pu)	-10
6	CALIPER (in)	16	10 (ft3)	0 30	COMPENSATED NEUTRON (pu)	-10
0	MINMK	20	TBHV		-0.25 CORRECTION (g/cc)	0.25
			0 (ft3)	10		

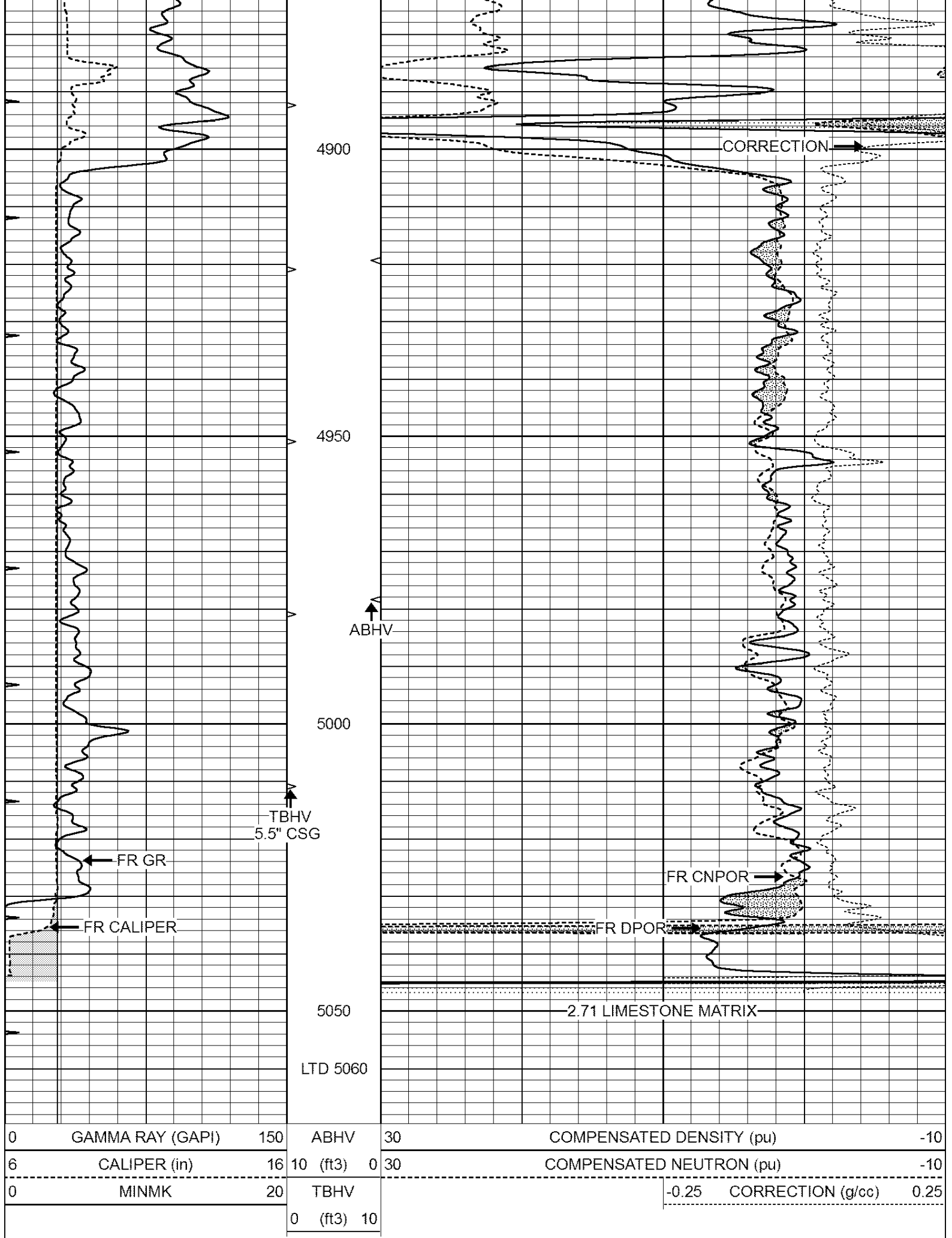












0	GAMMA RAY (GAPI)	150	ABHV	30	COMPENSATED DENSITY (pu)	-10	
6	CALIPER (in)	16	10 (ft3)	0 30	COMPENSATED NEUTRON (pu)	-10	
0	MINMK	20	TBHV		-0.25	CORRECTION (g/cc)	0.25
			0 (ft3)	10			

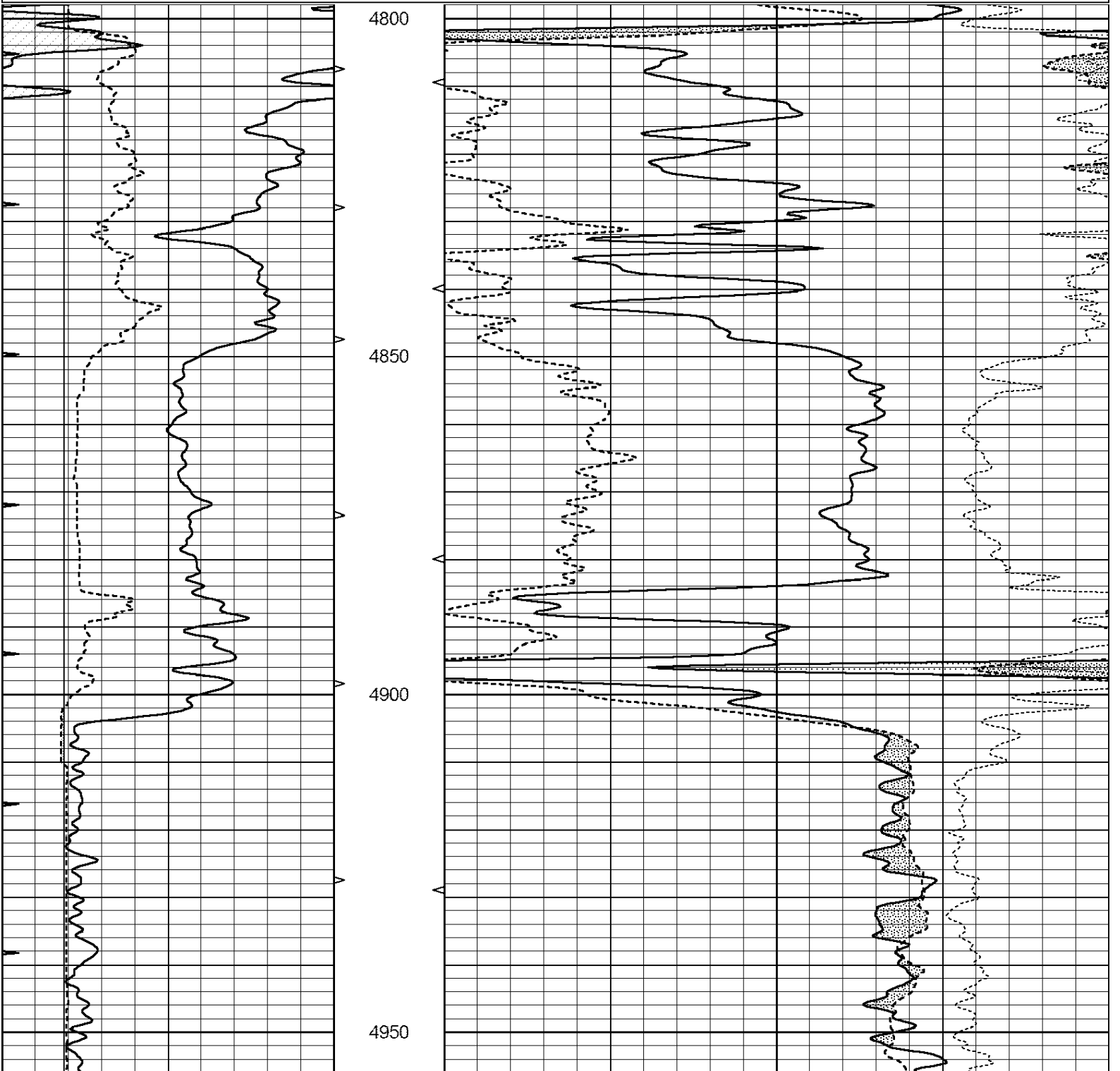


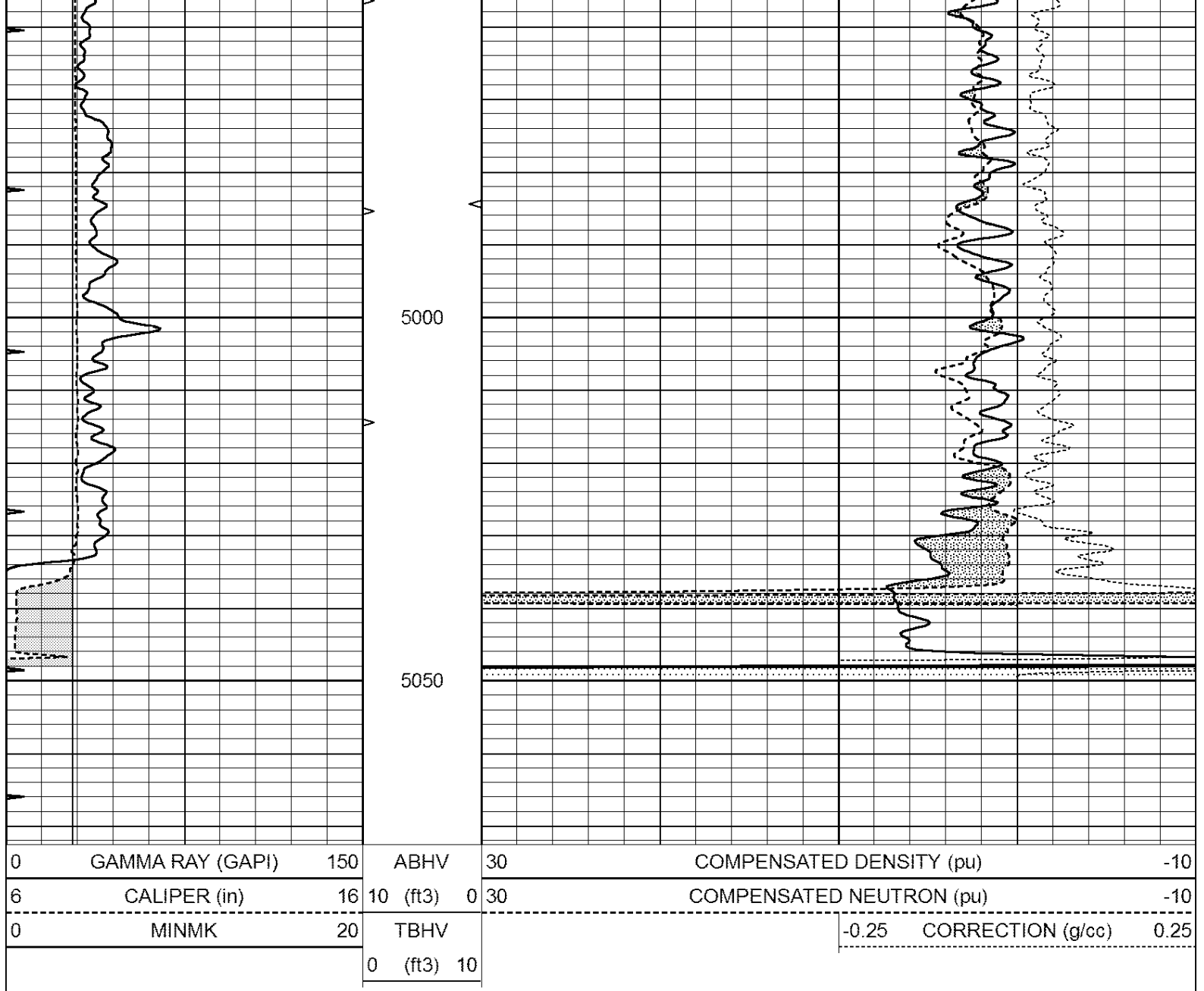
**COMPLETION  
& PRODUCTION  
SERVICES CO.**

# REPEAT SECTION

Database File: 24242ddn.db  
 Dataset Pathname: pass3.2  
 Presentation Format: den\_neu  
 Dataset Creation: Mon May 12 11:58:40 2014  
 Charted by: Depth in Feet scaled 1:240

0	GAMMA RAY (GAPI)	150	ABHV	30	COMPENSATED DENSITY (pu)	-10		
6	CALIPER (in)	16	10 (ft3)	0	30	COMPENSATED NEUTRON (pu)	-10	
0	MINMK	20	TBHV			-0.25	CORRECTION (g/cc)	0.25
			0 (ft3)	10				





### Calibration Report

Database File: 24242ddn.db  
 Dataset Pathname: pass5.9  
 Dataset Creation: Mon May 12 11:59:30 2014

### Dual Induction Calibration Report

Serial-Model: PROBE8-DILG  
 Surface Cal Performed: Fri Aug 01 06:33:19 2008  
 Downhole Cal Performed: Mon Jul 28 11:08:27 2008  
 After Survey Verification Performed: Mon Jul 28 11:08:27 2008

#### Surface Calibration

Loop:	Readings				References		Results	
	Air	Loop	V		Air	Loop	m	b
Deep	0.015	0.648	V	0.000	400.000	mmho/m	632.616	-9.730
Medium	0.029	0.796	V	0.000	464.000	mmho/m	605.049	-17.680
Internal:	Zero	Cal		Zero	Cal		m	b
Deep	0.017	0.657	V	0.000	400.000	mmho/m	625.153	-10.619
Medium	0.016	0.757	V	0.000	464.000	mmho/m	625.992	-9.739

Downhole Calibration			Readings		References		Results	
	Zero	Cal		Zero	Cal		m'	b'
Deep	0.000	0.000	mmho/m	2.011	405.777	mmho/m	1.000	0.000
Medium	0.000	0.000	mmho/m	7.590	503.393	mmho/m	1.000	0.000
LL3		7.500	V		1500.000	Ohm-m		
		0.000	V		20.000	Ohm-m		
		-7.200	V		3800.000	mmho-m		

After Survey Verification			Readings		Targets		Results	
	Zero	Cal		Zero	Cal		m'	b'
Deep	0.000	0.000	mmho/m	0.000	0.000	mmho/m	0.000	0.000
Medium	0.000	0.000	mmho/m	0.000	0.000	mmho/m	0.000	0.000
LL3		1.000	Ohm-m		1.000	Ohm-m		
		0.000	Ohm-m		0.000	Ohm-m		
		1.000	mmho-m		1.000	mmho-m		

**Compensated Density Calibration Report**

Serial-Model:	GEAR3-GEARHART
Source / Verifier:	143 / 143
Master Calibration Performed:	Fri Jan 04 15:48:16 2013
Before Survey Verification Performed:	
After Survey Verification Performed:	

Master Calibration			Density		Far Detector	Near Detector	
Magnesium	1.710	g/cc		935.36	501.55	cps	
Aluminum	2.580	g/cc		209.32	357.01	cps	
Spine Angle = 77.21			Density/Spine Ratio = 0.567				
	Size		Reading				
Small Ring	8.00	in	4.29	V			
Large Ring	14.00	in	6.24	V			

Before Survey Verification			Target	Measured
		g/cc		g/cc
		g/cc		g/cc
		g/cc		g/cc

After Survey Verification			Target	Measured
		g/cc		g/cc
		g/cc		g/cc
		g/cc		g/cc

**Compensated Neutron Calibration Report**

Serial Number:	61
Tool Model:	G

CALIBRATION			
Detector	Readings	Target	Normalization

Short Space	1.00	cps	1.00	cps	1.0000
Long Space	1.00	cps	1.00	cps	1.0000

PRE-SURVEY VERIFICATION

	Detector	Readings	Measured	Target
1)	Short Space	cps		
	Long Space	cps	pu	pu
2)	Short Space	cps		
	Long Space	cps	pu	
3)	Short Space	cps		
	Long Space	cps	pu	

POST-SURVEY VERIFICATION

	Detector	Readings	Measured	Target
1)	Short Space	cps		
	Long Space	cps	pu	pu
2)	Short Space	cps		
	Long Space	cps	pu	pu
3)	Short Space	cps		
	Long Space	cps	pu	pu

Gamma Ray Calibration Report

Serial Number:	GR6	
Tool Model:	OPEN	
Performed:	Tue May 06 06:07:07 2014	
Calibrator Value:	150.0	GAPI
Background Reading:	0.0	cps
Calibrator Reading:	276.0	cps
Sensitivity:	0.8035	GAPI/cps