



Pioneer Energy Services

Dual Induction Log

15-009-26,011-00-00

API No.

Company American Warrior, Inc.

Well Tempero # 8-23

Field Sanford

County Barton State

Kansas

Location

1703' FSL & 918' FEL

Other Services
CNL/CDL
MEL

Sec: 23 Twp: 17S Rge: 14W

Permanent Datum Ground Level Elevation 1905
Log Measured From Kelly Bushing 8 Ft. Above Perm. Datum

Drilling Measured From Kelly Bushing

Elevation
K.B. 1913
D.F.
G.L. 1905

Date	8/19/2014	
Run Number	One	
Depth Driller	3500	
Depth Logger	3503	
Bottom Logged Interval	3502	
Top Log Interval	800	
Casing Driller	8.625 @ 848	
Casing Logger	841	
Bit Size	7.875	
Type Fluid in Hole	Chemical	
Salinity, ppm CL	5800	
Density / Viscosity	8.9 64	
pH / Fluid Loss	9.0 8.8	
Source of Sample	Flowline	
Rm @ Meas. Temp	.75 @ 88	
Rmf @ Meas. Temp	.56 @ 88	
Rmc @ Meas. Temp	1.01 @ 88	
Source of Rmf / Rmc	Charts	
Rm @ BHT	.59 @ 111	
Operating Rig Time	4 Hours	
Max Rec. Temp. F	111	
Equipment Number	15	
Location	Hays	
Recorded By	D. Kerr	D. Fischer
Witnessed By	Jim Musgrove	

<<< Fold Here >>>

All interpretations are opinions based on inferences from electrical or other measurements and we cannot and do not guarantee the accuracy or correctness of any interpretation, and we shall not, except in the case of gross or willful negligence on our part, be liable or responsible for any loss, costs, damages, or expenses incurred or sustained by anyone resulting from any interpretation made by any of our officers, agents or employees. These interpretations are also subject to our general terms and conditions set out in our current Price Schedule.

Comments

Thank you for using Pioneer Energy Services
www.pioneerenergy.com
 785 625 3858

Hwy. 281 & Hwy. 4 Junction, 1 North, 1/2 East, North Into.

Database File: c:\warrior\data\amwar_tempero # 8-23\americanwarrior_tempero_8-23hd.db
 Dataset Pathname: DIL\awstk
 Presentation Format: dil2in
 Dataset Creation: Tue Aug 19 23:58:15 2014
 Charted by: Depth in Feet scaled 1:600

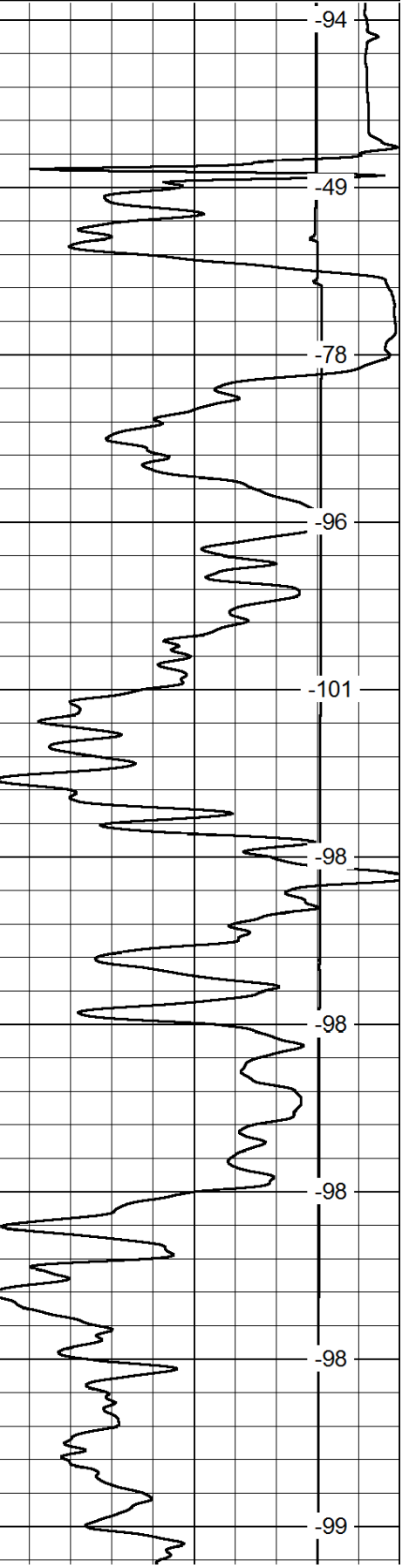
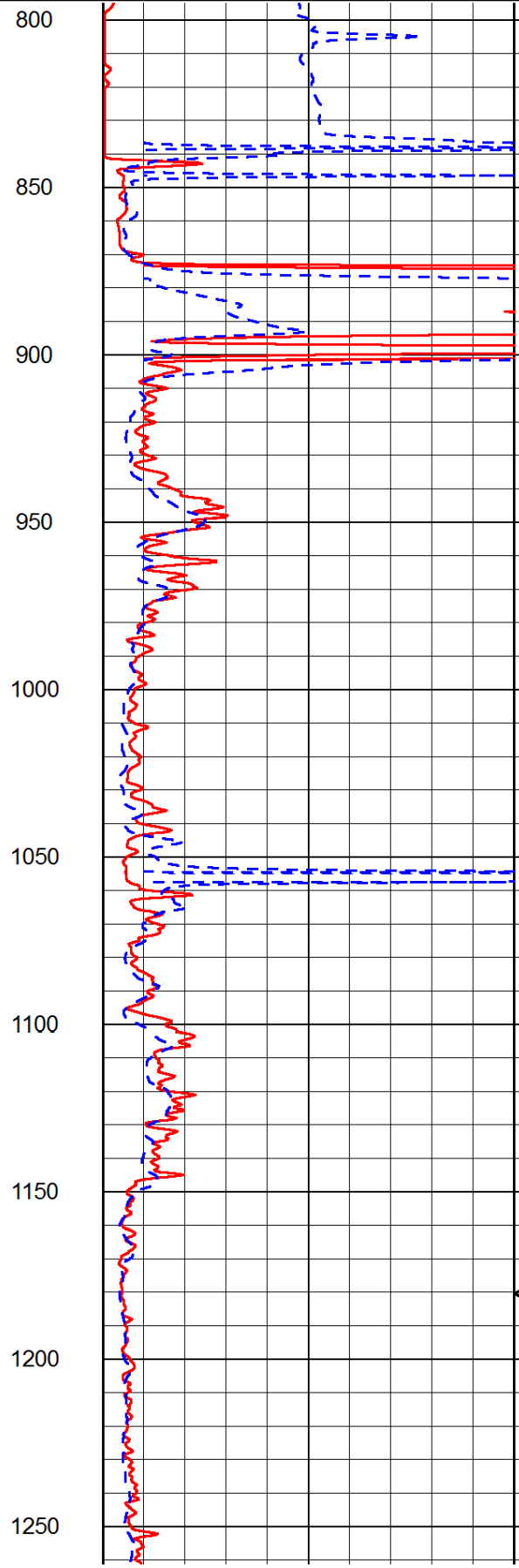
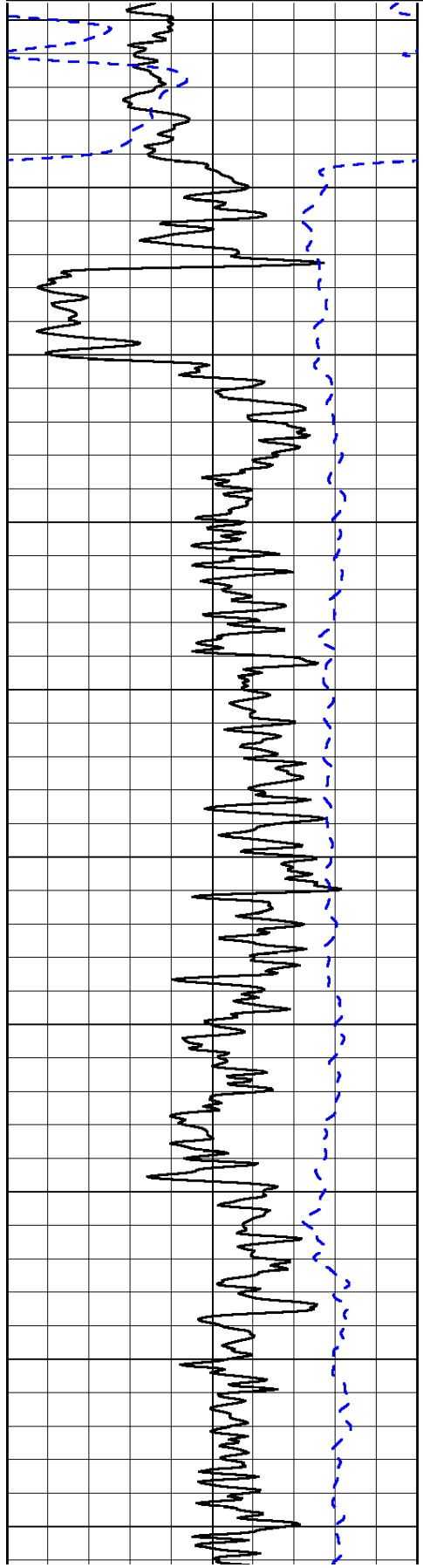
0	Gamma Ray	150
-200	SP (mV)	0

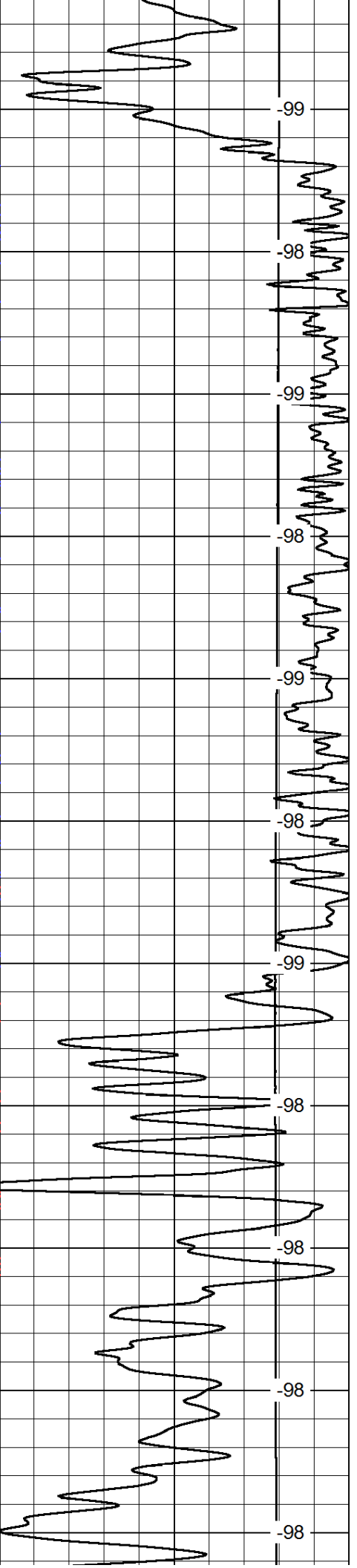
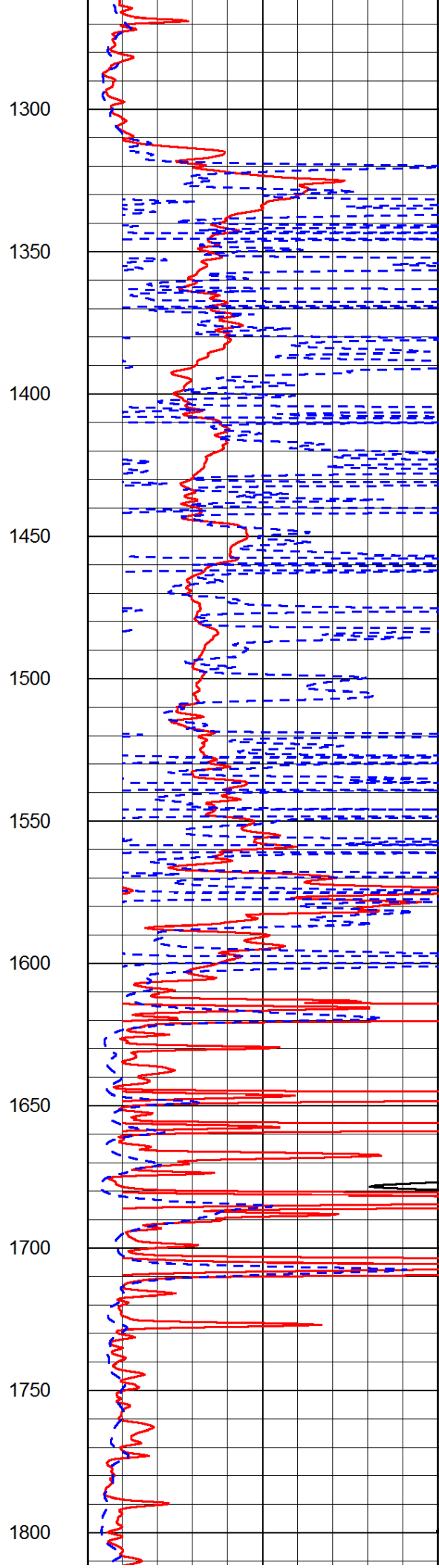
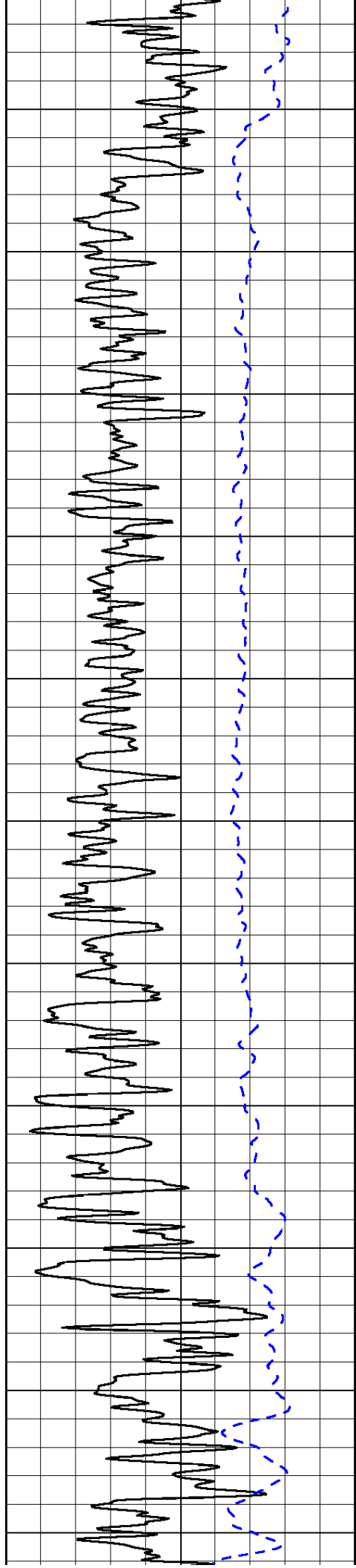
0	Shallow Resistivity	50
0	Deep Resistivity	50

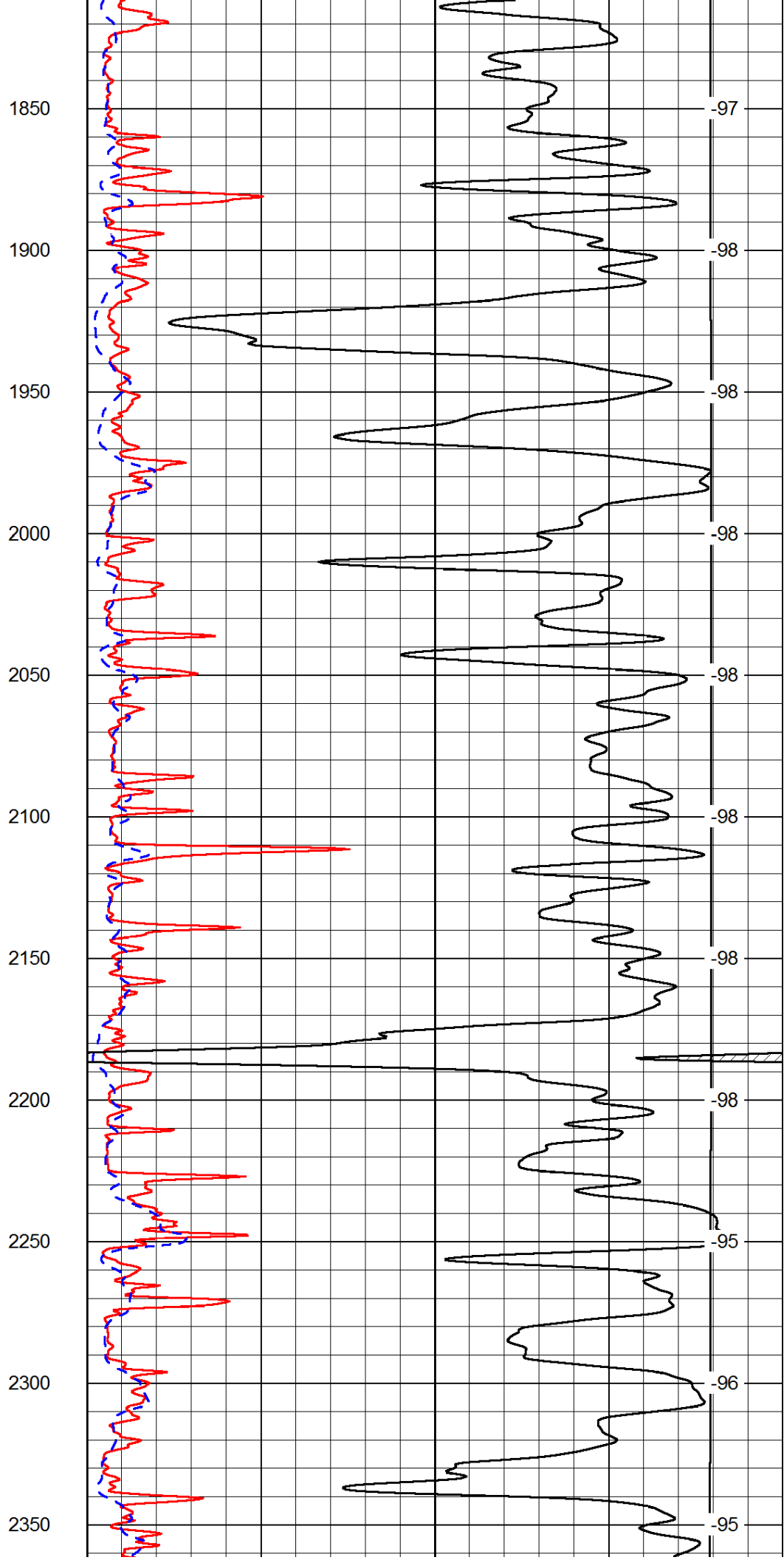
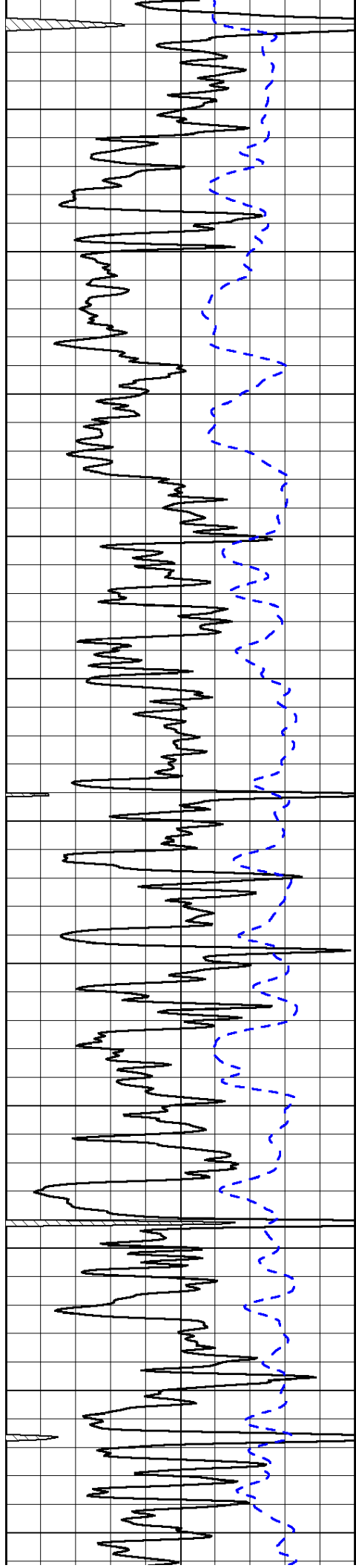
LSPD

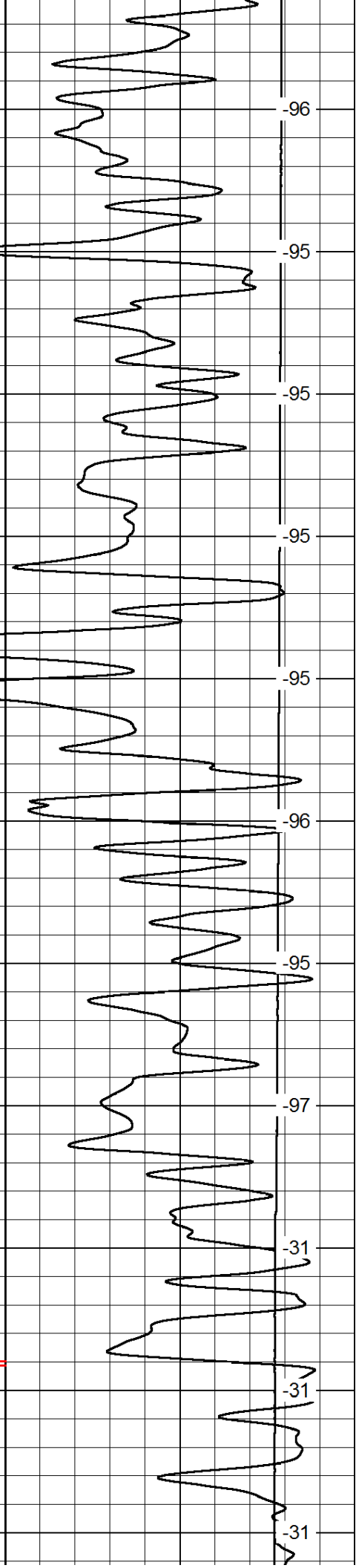
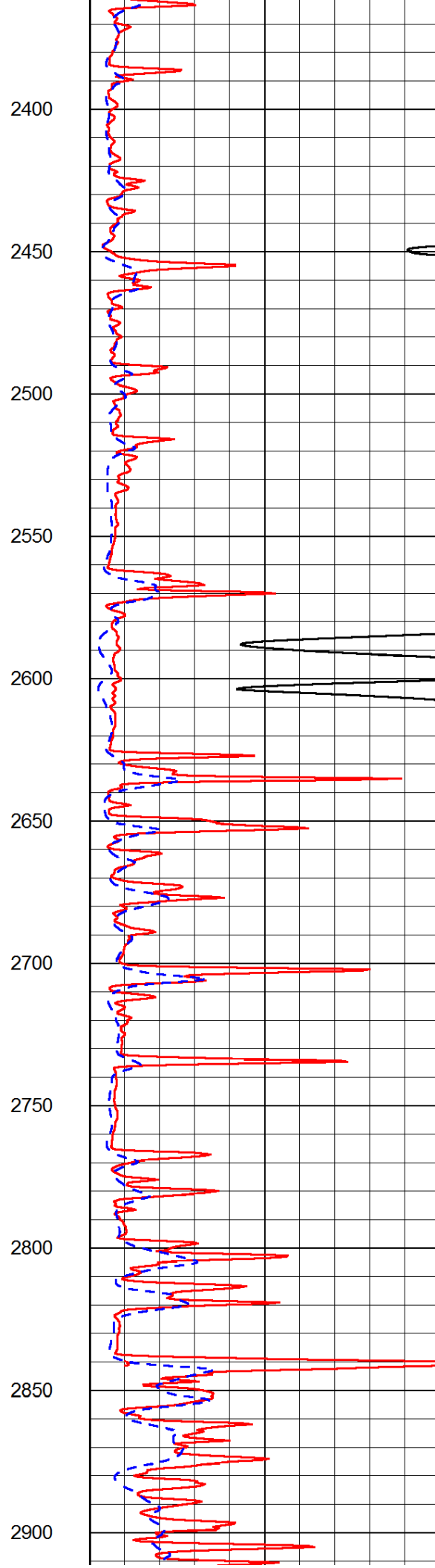
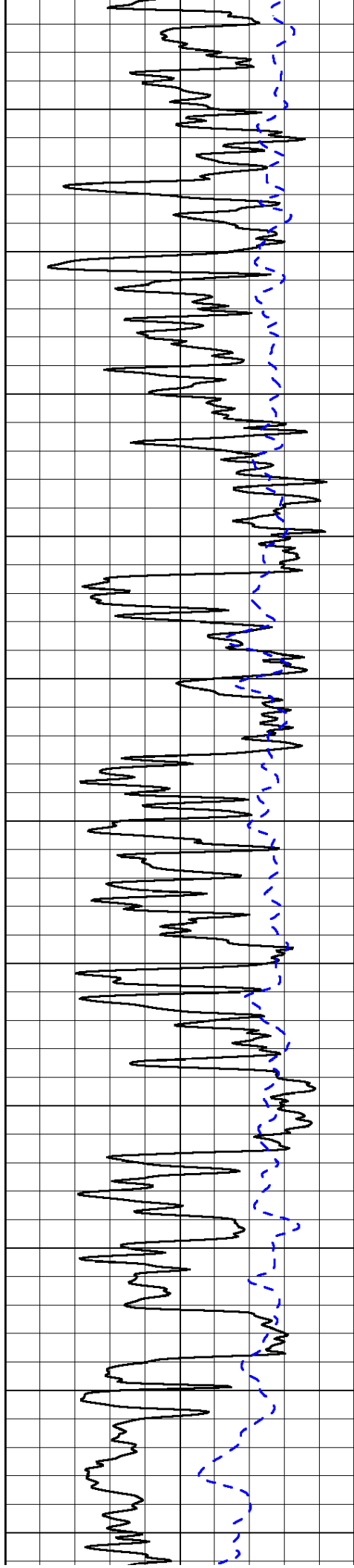
1000	Conductivity	0
15000	Line Tension	0

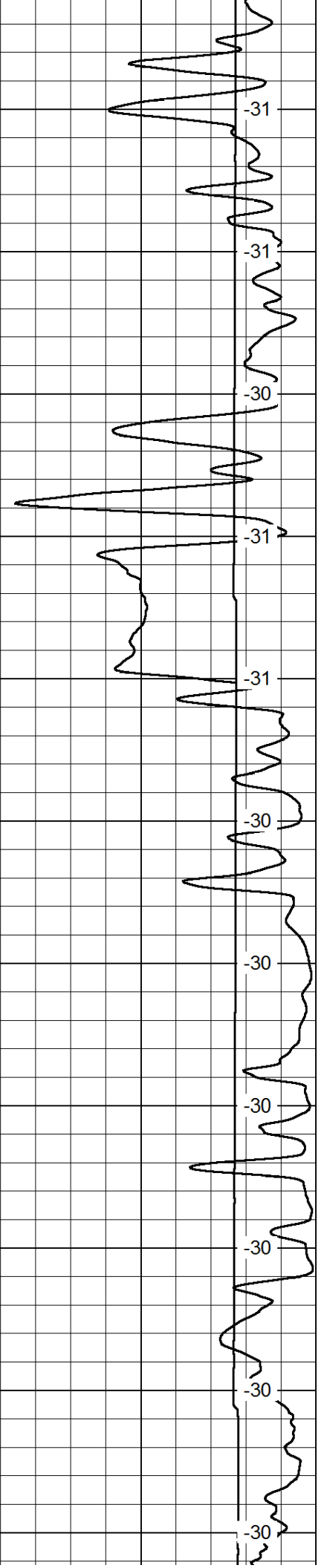
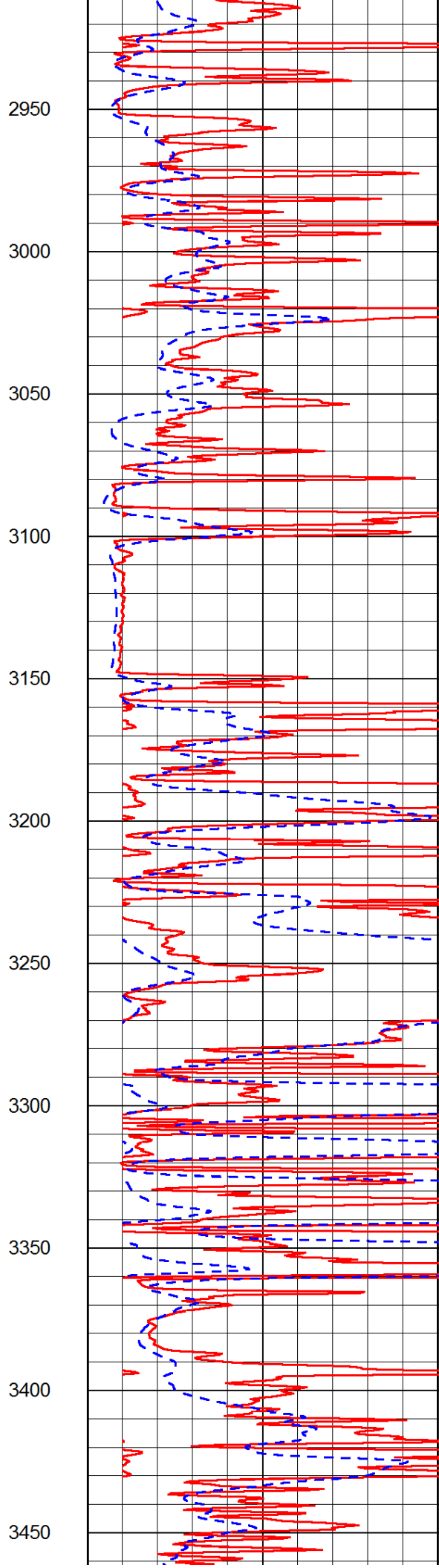
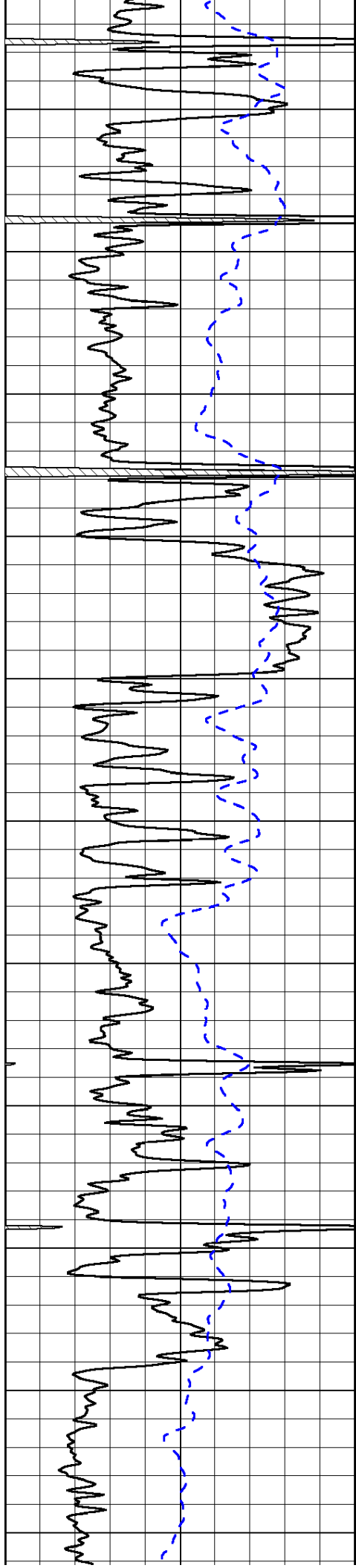
50	Shallow Resistivity	500
50	Deep Resistivity	500

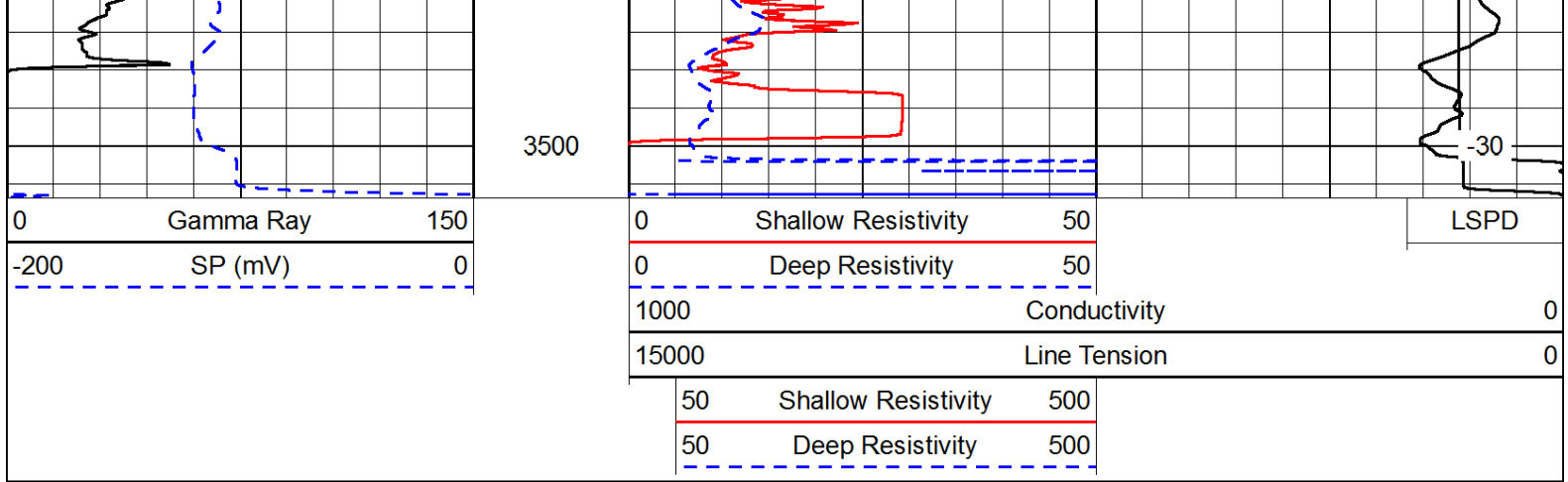




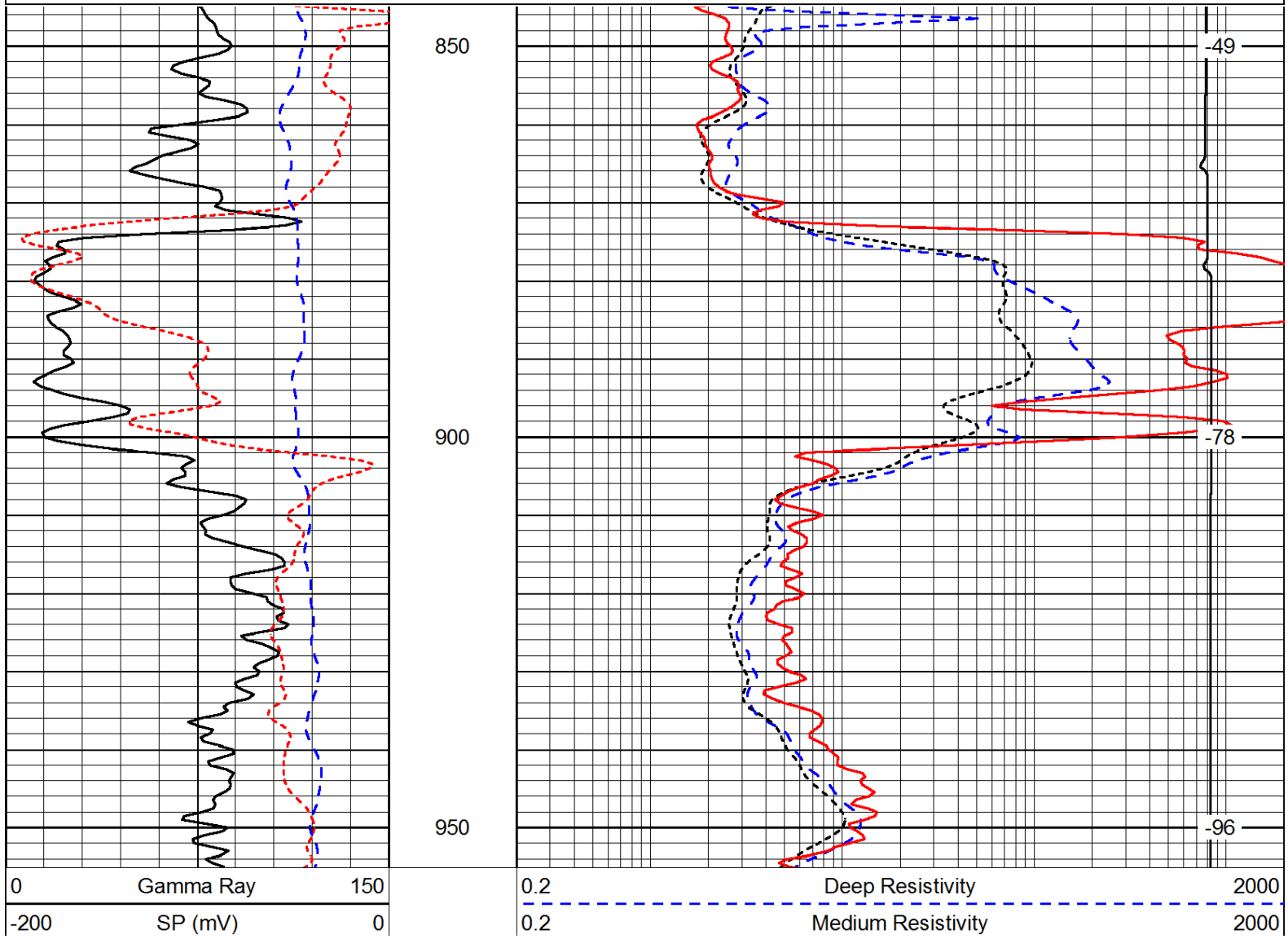
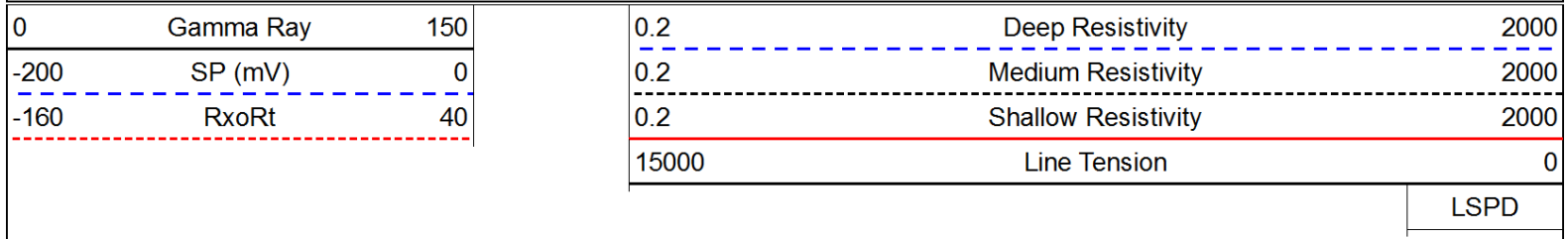








Database File: c:\warrior\data\amwar_tempero # 8-23\americanwarrior_tempero_8-23hd.db
 Dataset Pathname: DIL/awstk
 Presentation Format: dil
 Dataset Creation: Tue Aug 19 23:58:15 2014
 Charted by: Depth in Feet scaled 1:240



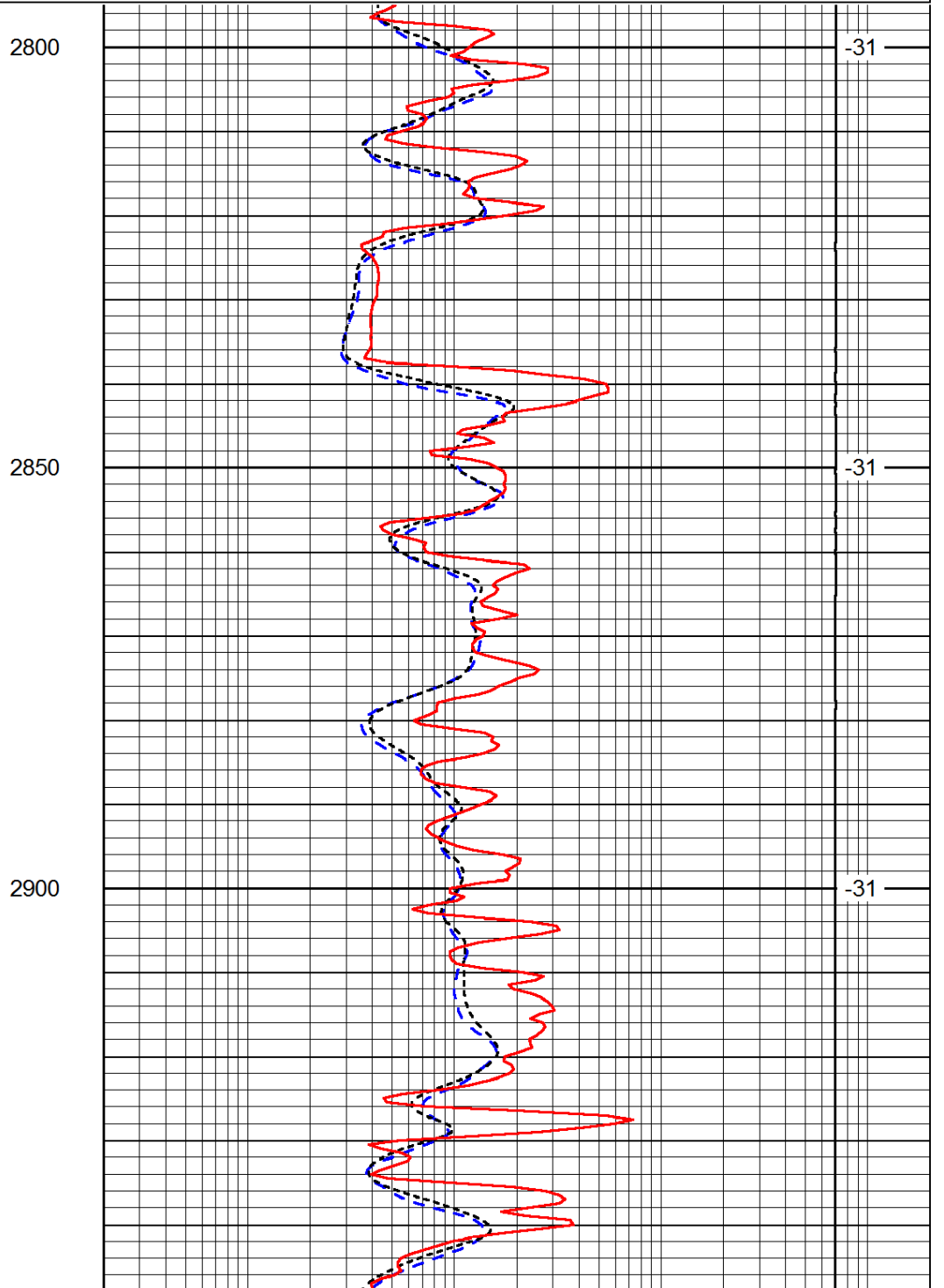
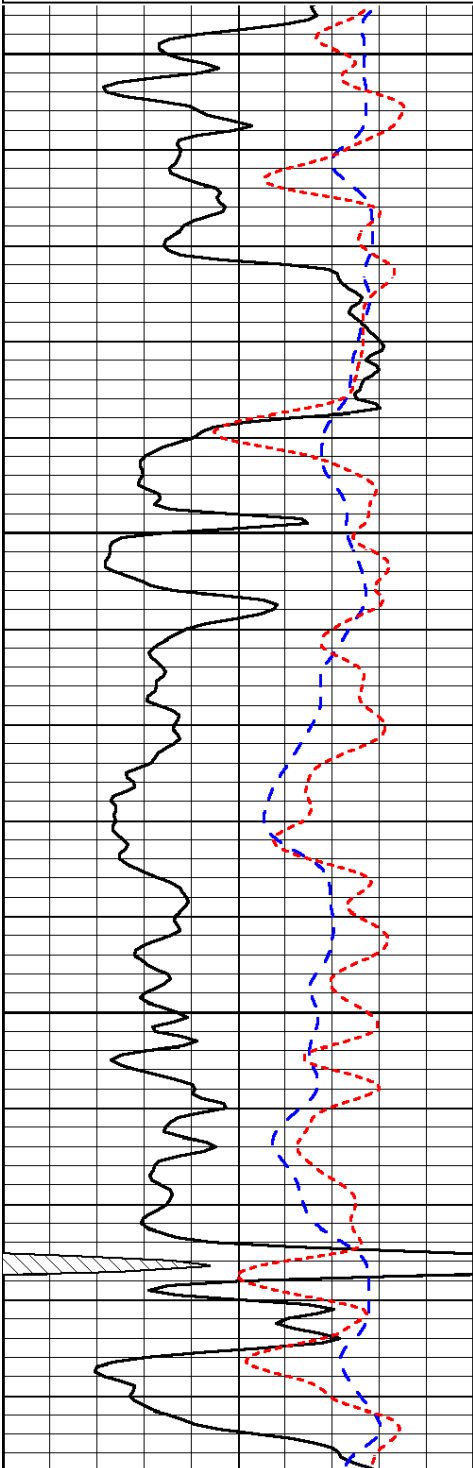
-160	RxoRt	40
------	-------	----

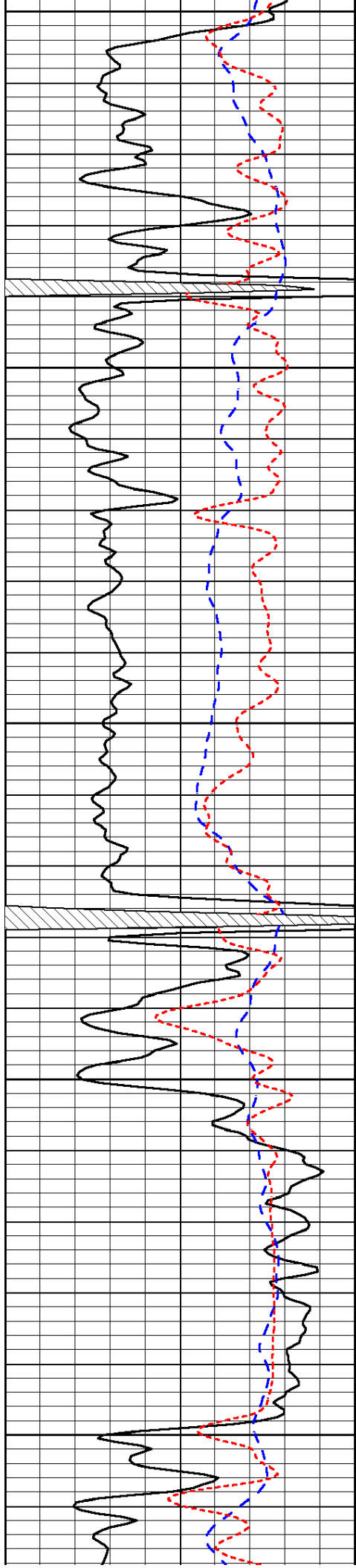
0.2	Shallow Resistivity	2000
15000	Line Tension	0
		LSPD

Database File: c:\warrior\data\amwar_tempero # 8-23\americanwarrior_tempero_8-23hd.db
 Dataset Pathname: DIL/awstk
 Presentation Format: dil
 Dataset Creation: Tue Aug 19 23:58:15 2014
 Charted by: Depth in Feet scaled 1:240

0	Gamma Ray	150
-200	SP (mV)	0
-160	RxoRt	40

0.2	Deep Resistivity	2000
0.2	Medium Resistivity	2000
0.2	Shallow Resistivity	2000
15000	Line Tension	0
		LSPD





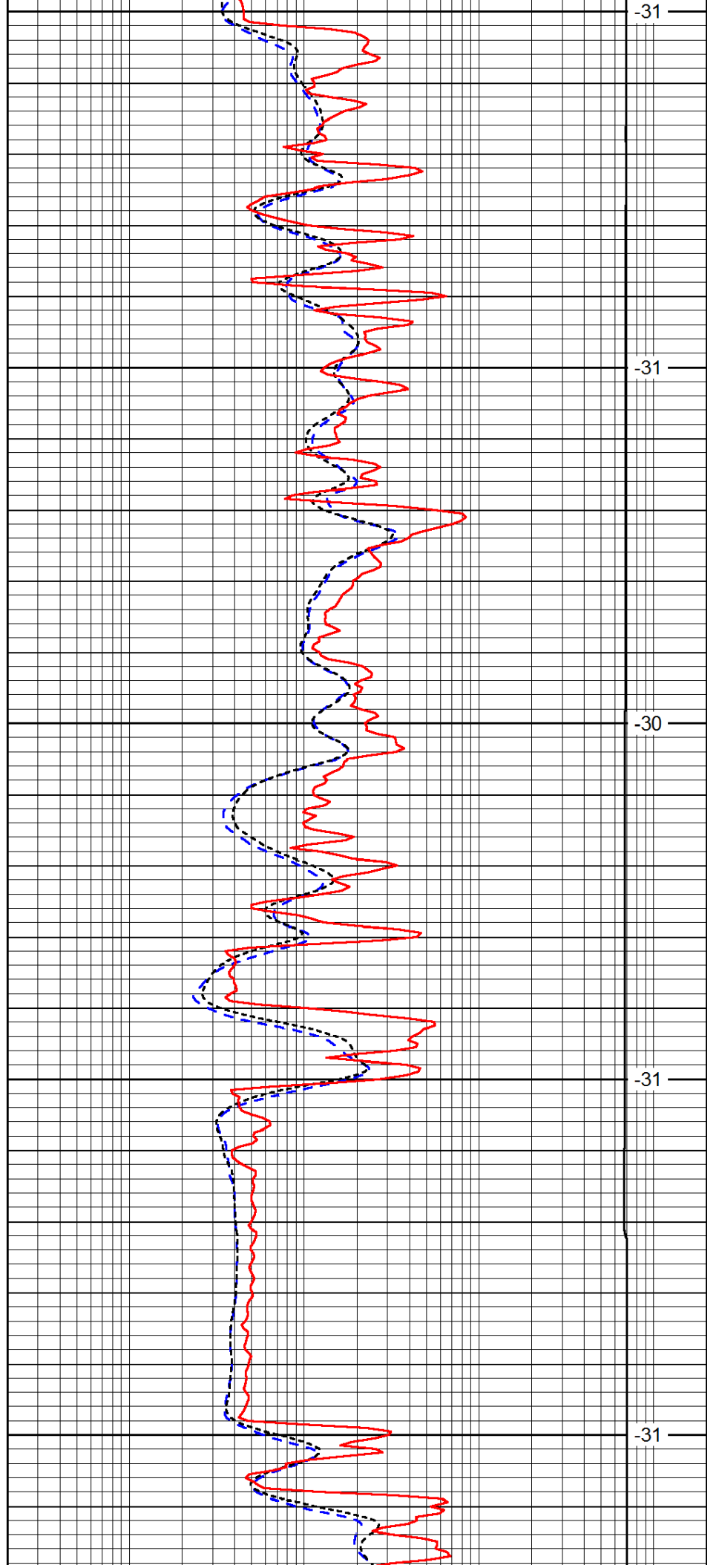
2950

3000

3050

3100

3150



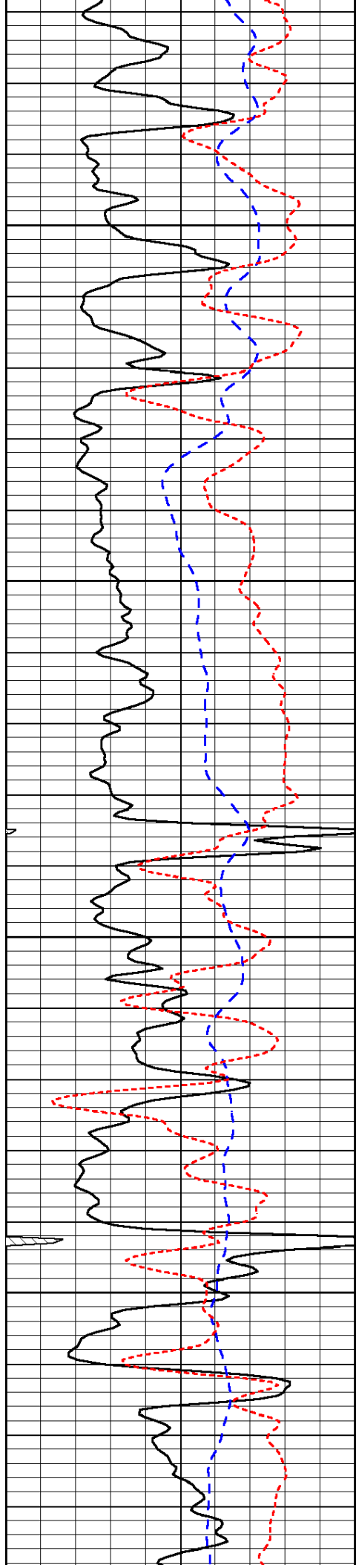
-31

-31

-30

-31

-31

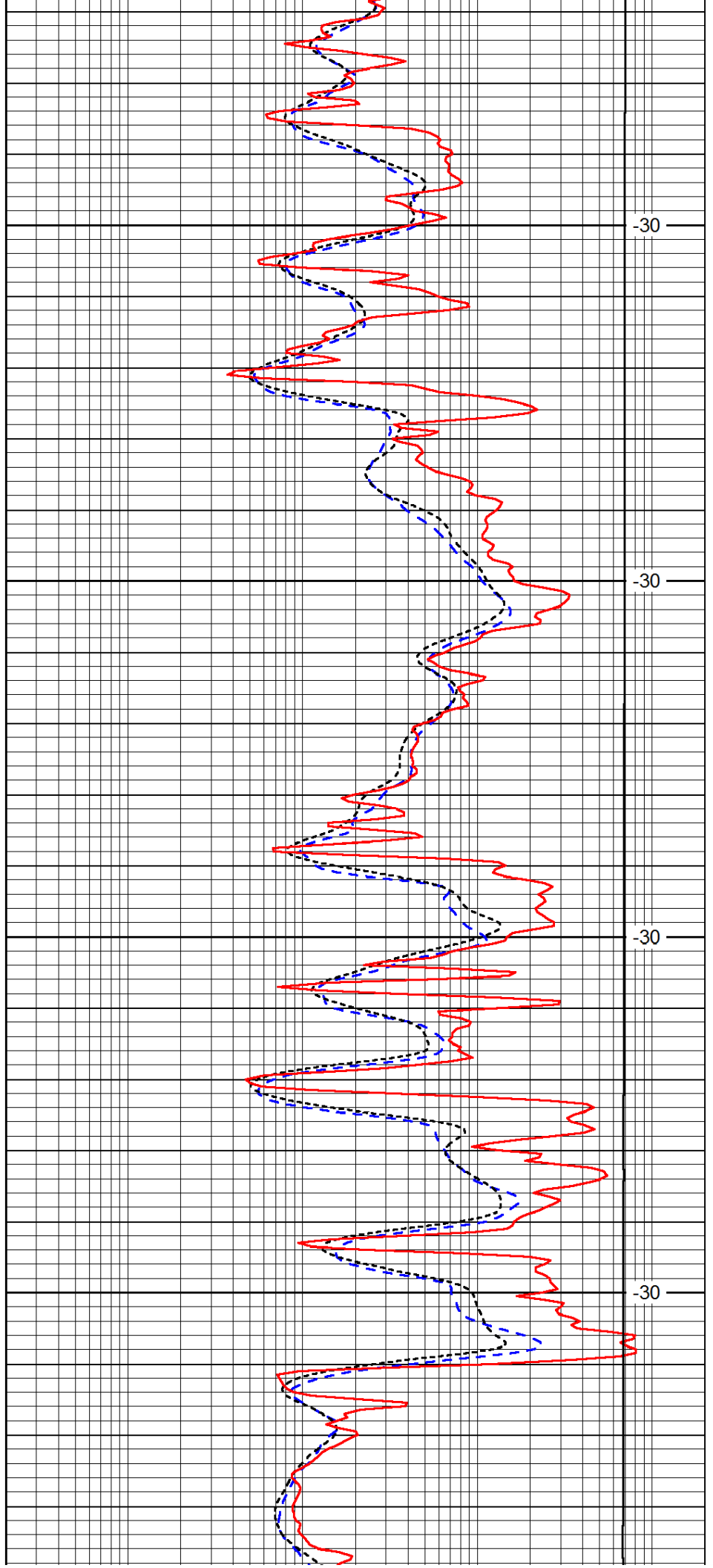


3200

3250

3300

3350

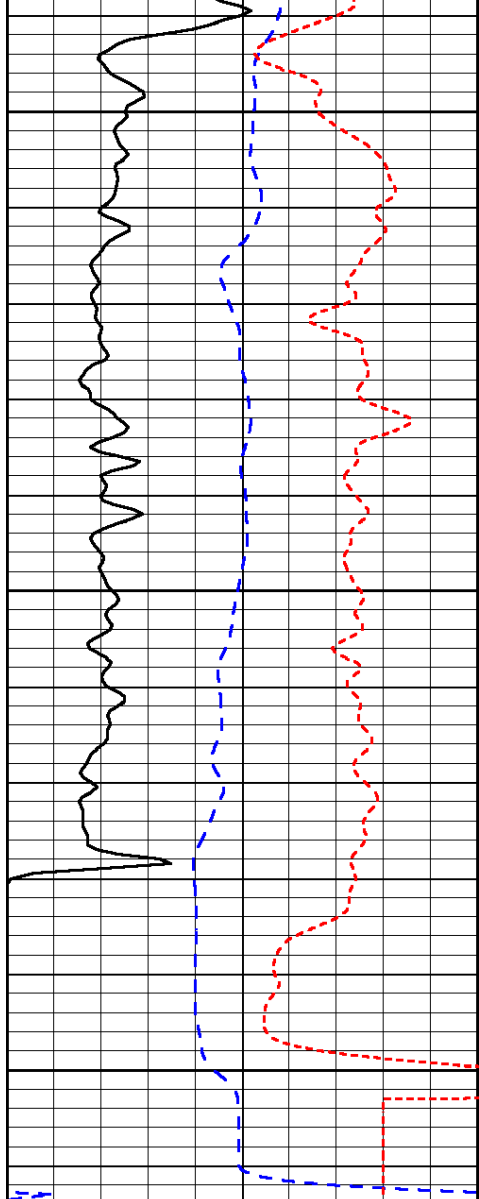


-30

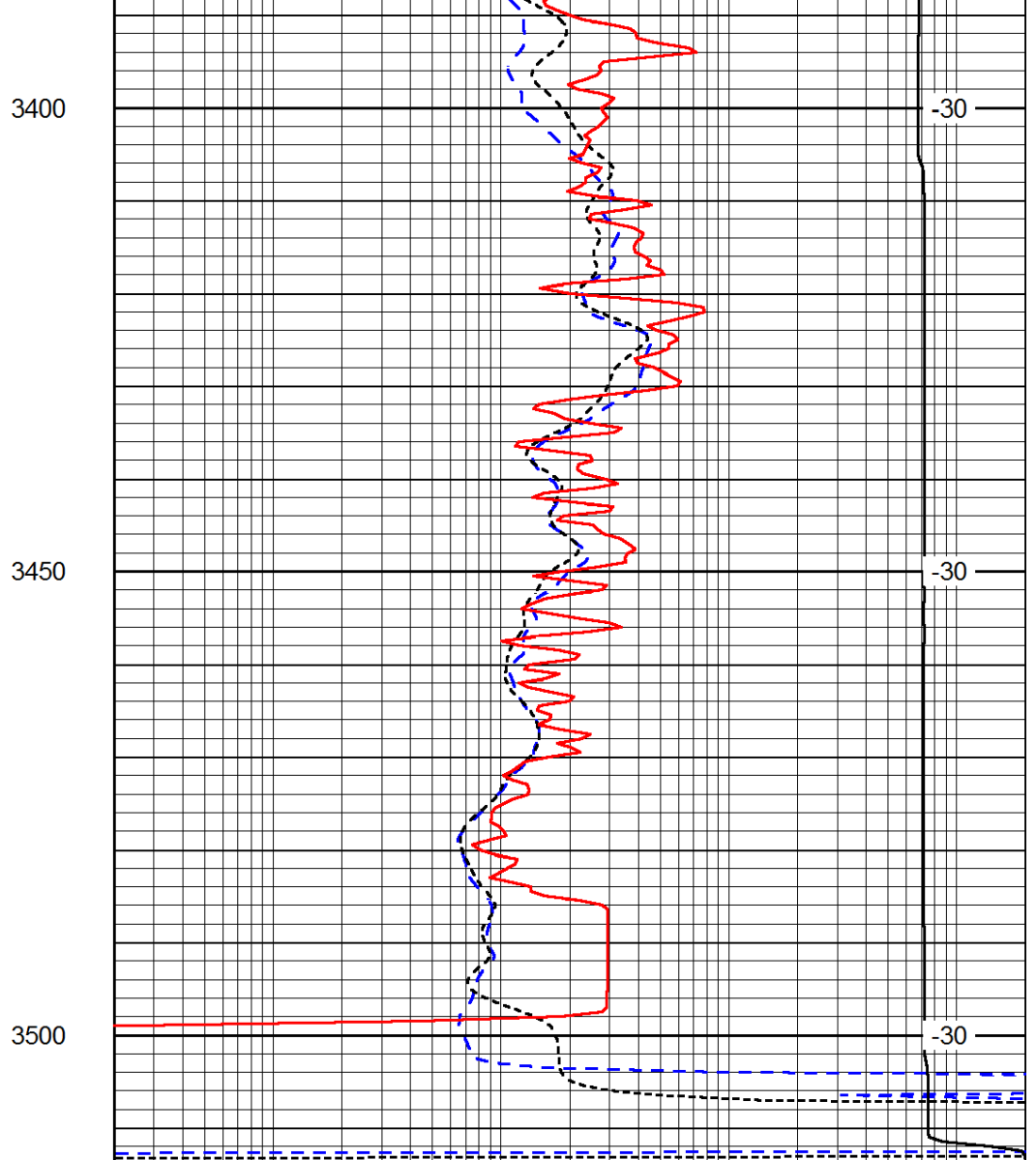
-30

-30

-30



0	Gamma Ray	150
-200	SP (mV)	0
-160	RxoRt	40



0.2	Deep Resistivity	2000
0.2	Medium Resistivity	2000
0.2	Shallow Resistivity	2000
15000	Line Tension	0

LSPD