



Pioneer Energy Services

# Microresistivity Log

API No.	15-007-24,198-00-00		
Company	Val Energy, Inc.	Location	1,010' FNL & 2,280' FWL
Well	Lucille Spicer No. 2	Sec: 34	Twp: 30s Rge: 12W
Field	Meairs	Ground Level	Elevation 1672
County	Barber	Log Measured From	Kelly Bushing
State	Kansas	Drilling Measured From	Kelly Bushing
		10 Ft. Above Perm. Datum	
			Other Services CNL/CDL DIL
			Elevation K.B. 1682 D.F. 1672 G.L. 1672

Date	8/12/2014
Run Number	Two
Depth Driller	4450
Depth Logger	4446
Bottom Logged Interval	4445
Top Log Interval	3200
Casing Driller	8.625 @ 213
Casing Logger	226
Bit Size	7.875
Type Fluid in Hole	Chemical
Salinity, ppm CL	5000
Density / Viscosity	9.4 63
pH / Fluid Loss	10.5 8.8
Source of Sample	Flowline
Rm @ Meas. Temp	.65 @ 74
Rmf @ Meas. Temp	.49 @ 74
Rmc @ Meas. Temp	.88 @ 74
Source of Rmf / Rmc	Charts
Rm @ BHT	.40 @ 121
Operating Rig Time	4.5 Hours
Max Rec. Temp. F	121
Equipment Number	108
Location	Hays
Recorded By	J. Long
Witnessed By	Zeb Stewart
	D. Fischer

<<< Fold Here >>>

All interpretations are opinions based on inferences from electrical or other measurements and we cannot and do not guarantee the accuracy or correctness of any interpretation, and we shall not, except in the case of gross or willful negligence on our part, be liable or responsible for any loss, costs, damages, or expenses incurred or sustained by anyone resulting from any interpretation made by any of our officers, agents or employees. These interpretations are also subject to our general terms and conditions set out in our current Price Schedule.

### Comments

Thank you for using Log-Tech, Inc.  
(785) 625-3858

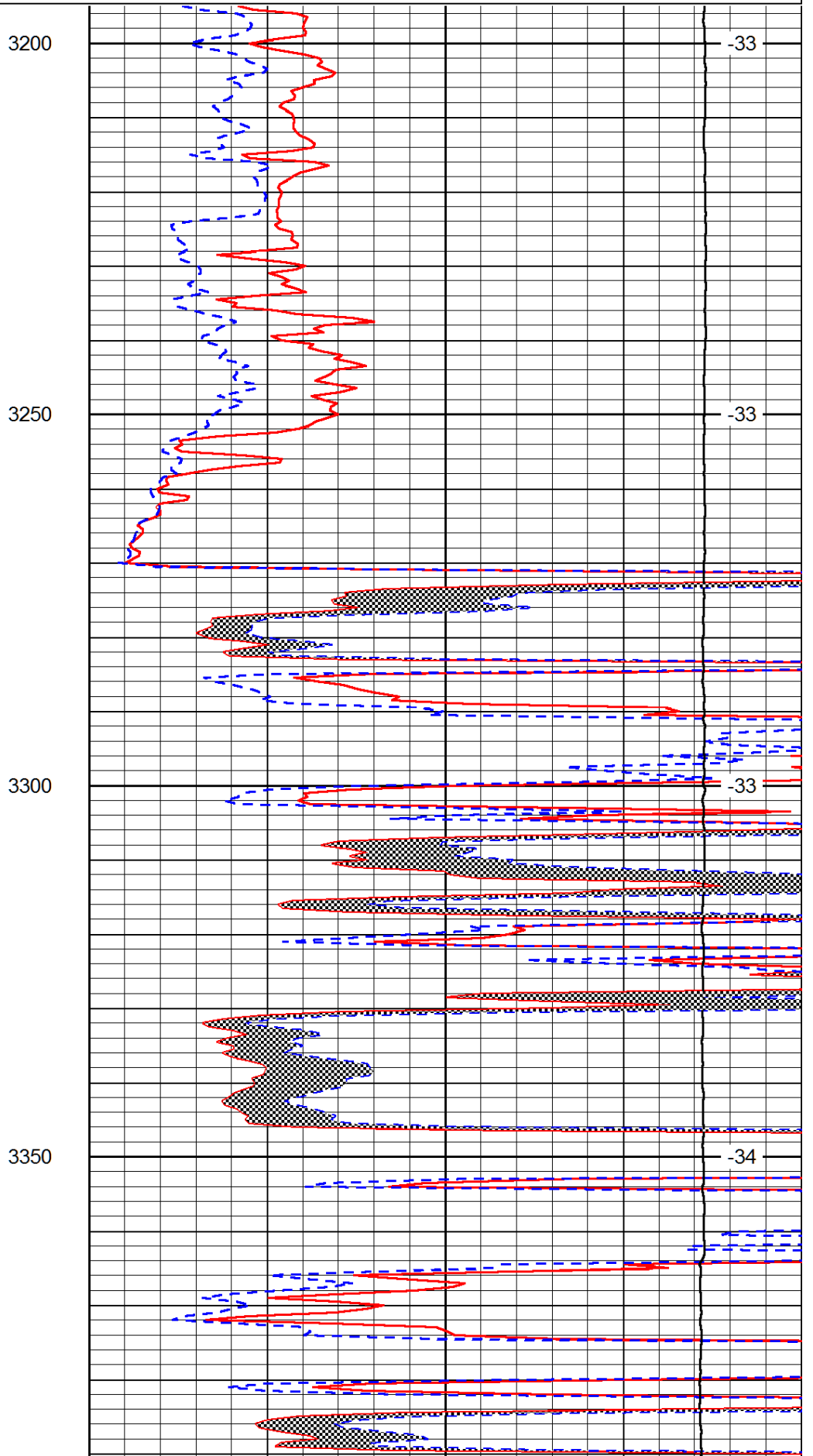
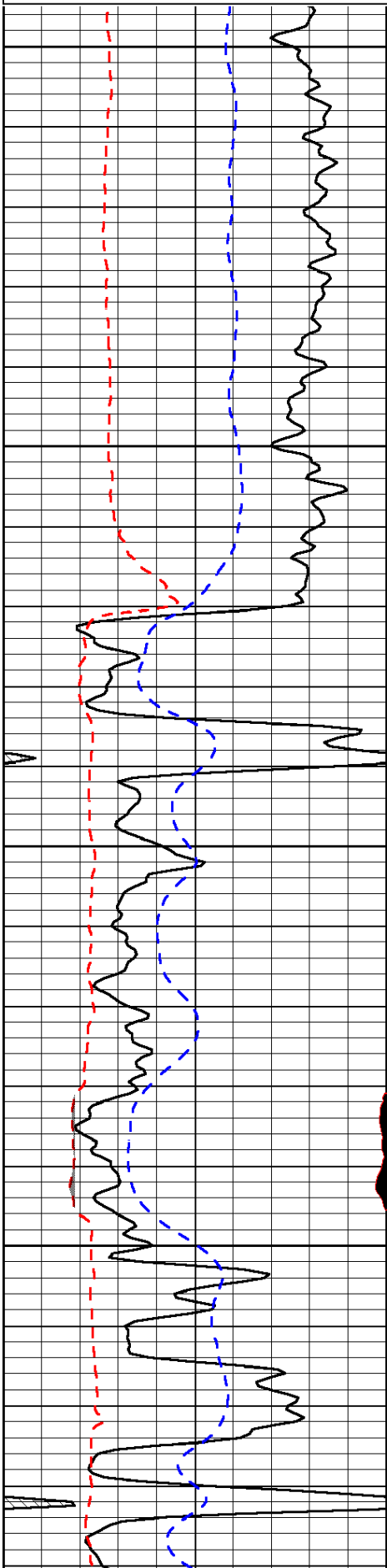
Medicine Lodge KS, 8 North, East Into.

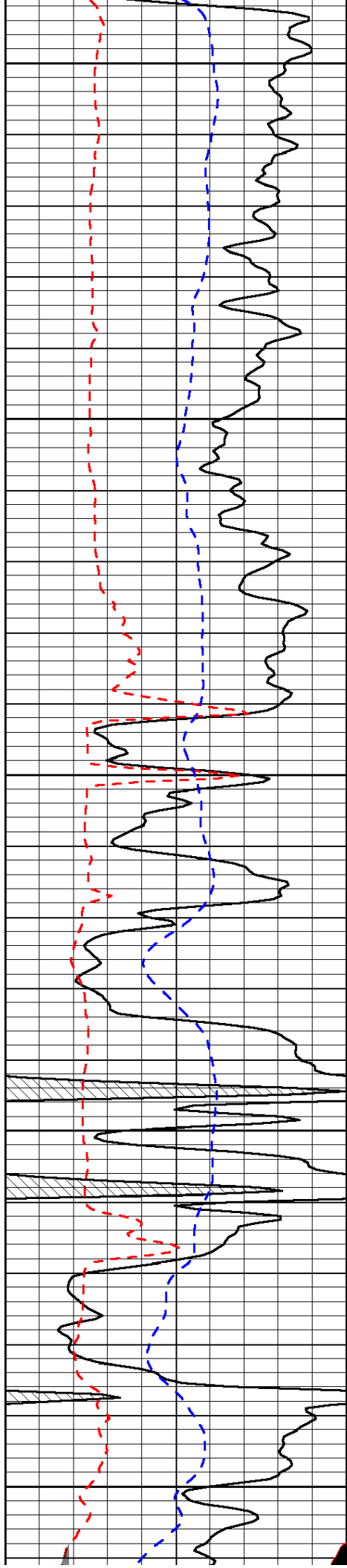
Database File: val\_energy\_lucile\_spicer\_2hd.db  
 Dataset Pathname: DIL\valstck  
 Presentation Format: micro  
 Dataset Creation: Tue Aug 12 04:21:00 2014  
 Charted by: Depth in Feet scaled 1:240

0	Gamma Ray	150
6	MCAL (GAPI)	16
2.875	Mud Cake (GAPI)	7.875
-200	SP (mV)	0

0	Micro Inverse 1 X 1	40
0	Micro Normal 2"	40
10000	Line Weight	0

LSPD





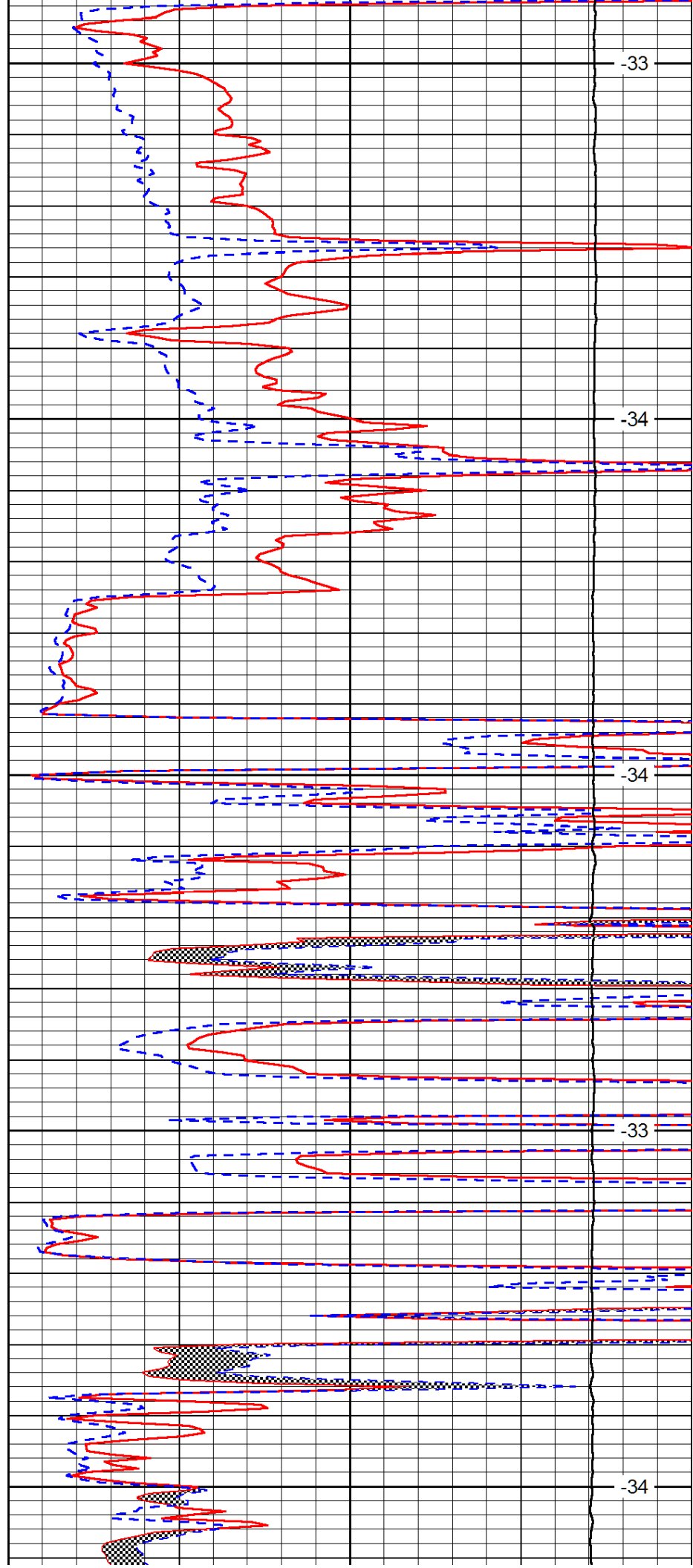
3400

3450

3500

3550

3600



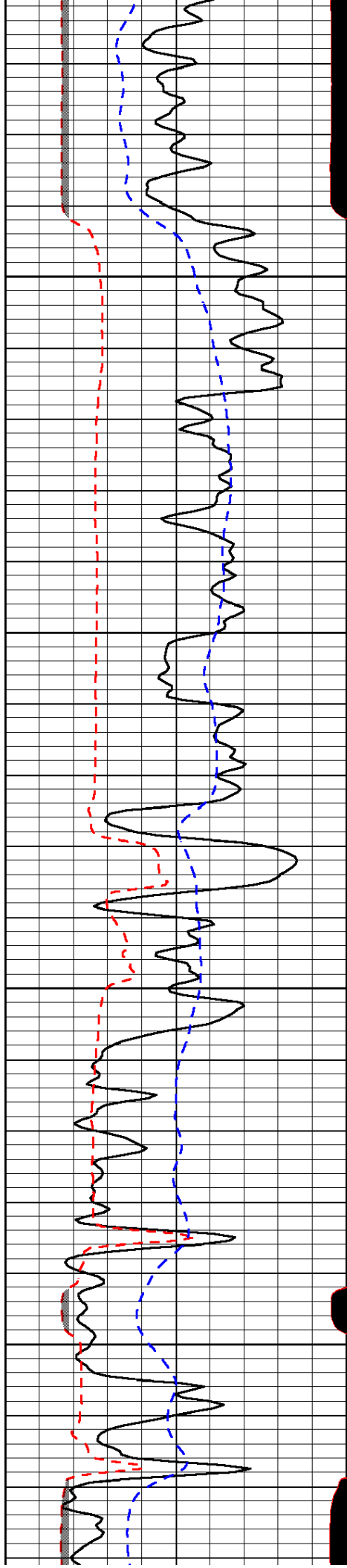
-33

-34

-34

-33

-34

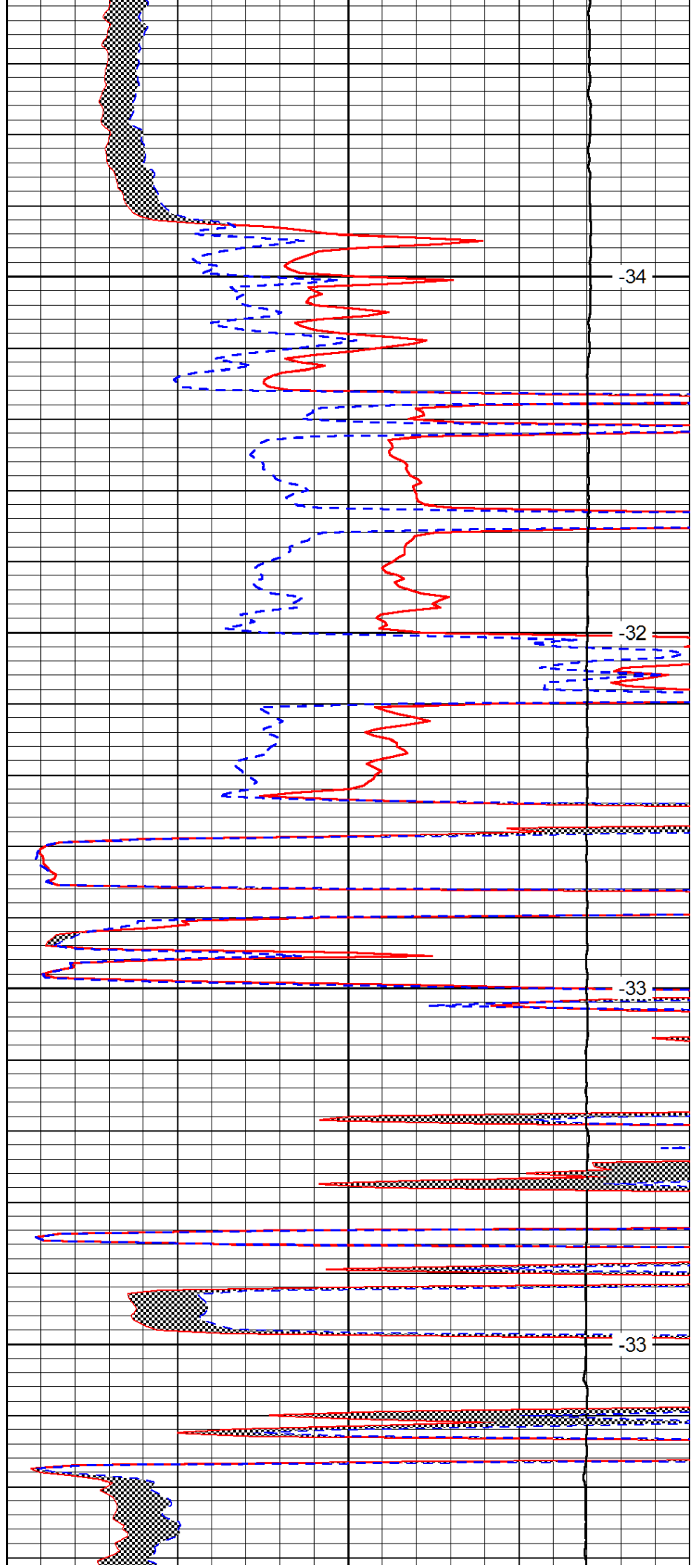


3650

3700

3750

3800

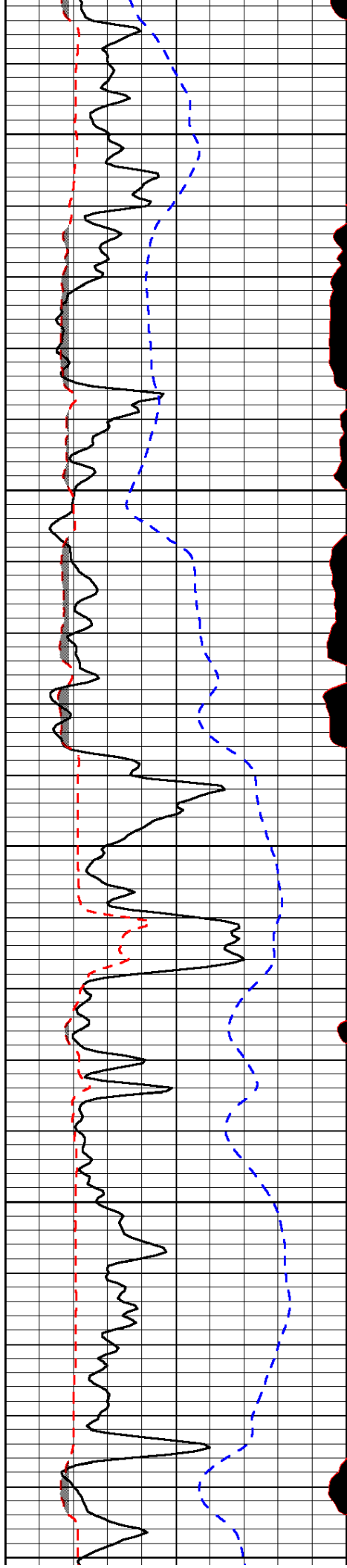


-34

-32

-33

-33



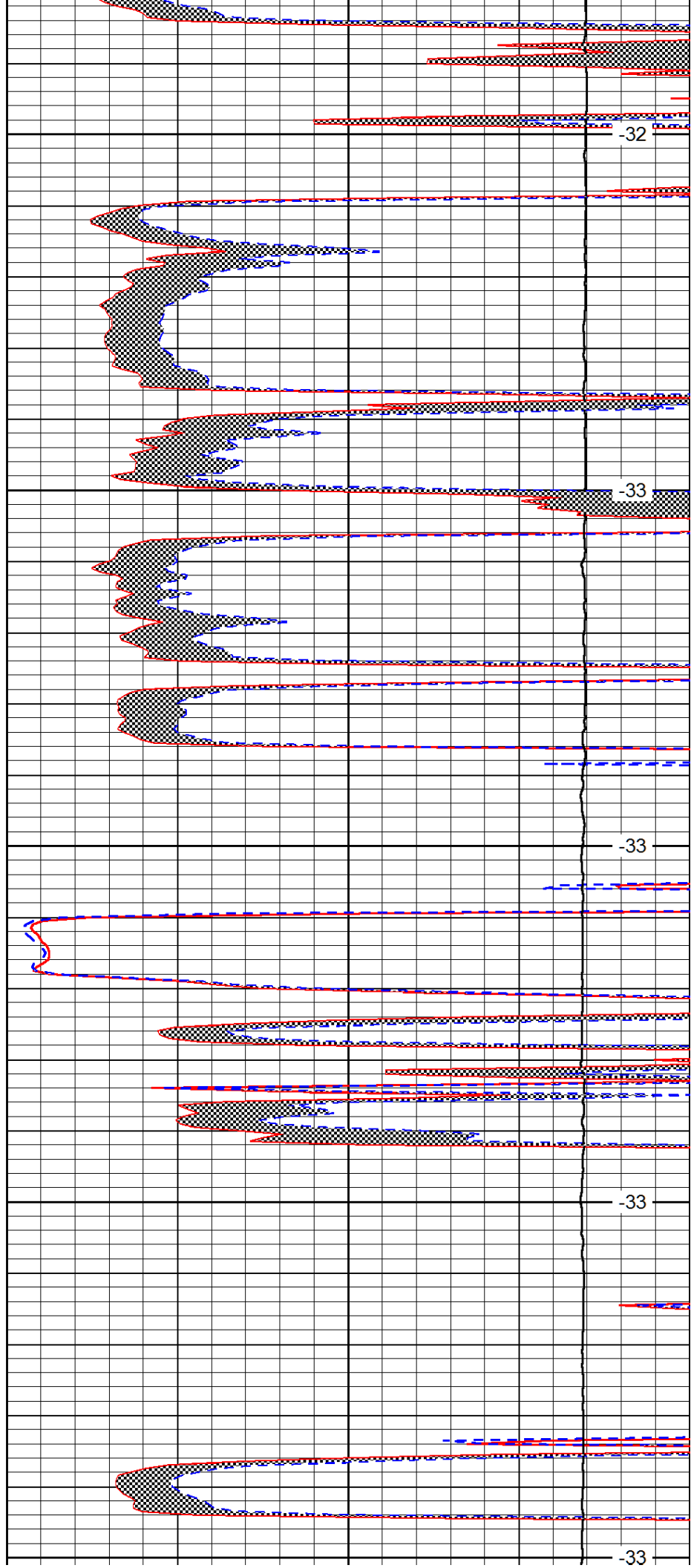
3850

3900

3950

4000

4050



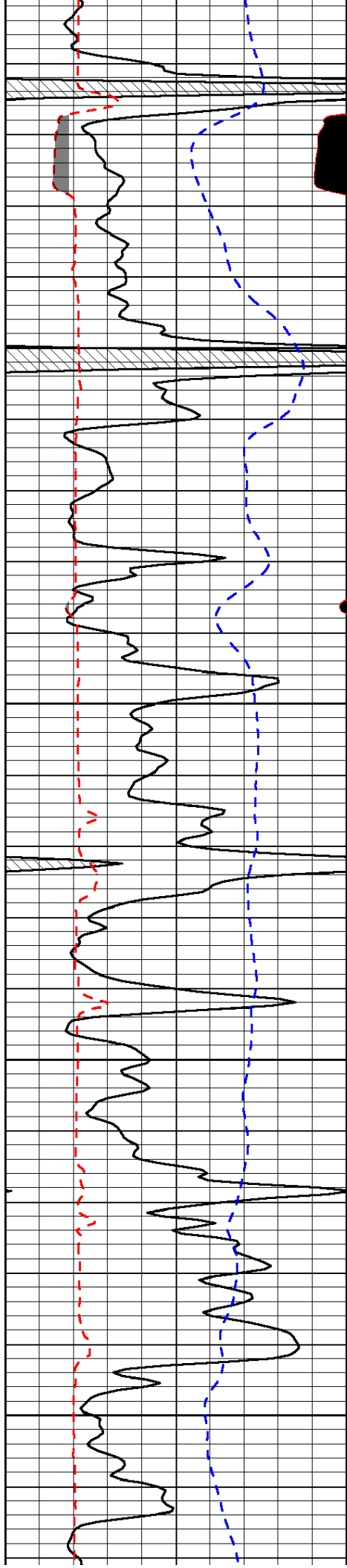
-32

-33

-33

-33

-33

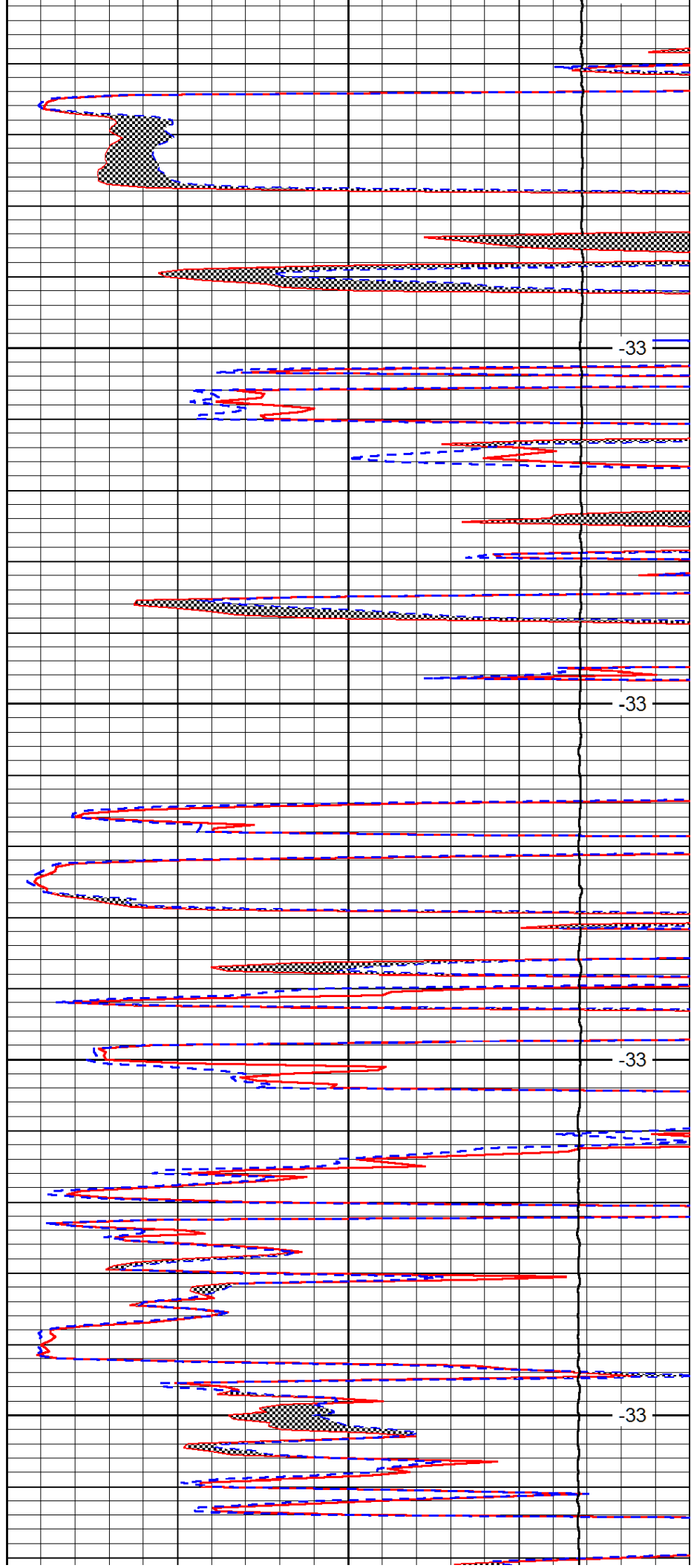


4100

4150

4200

4250

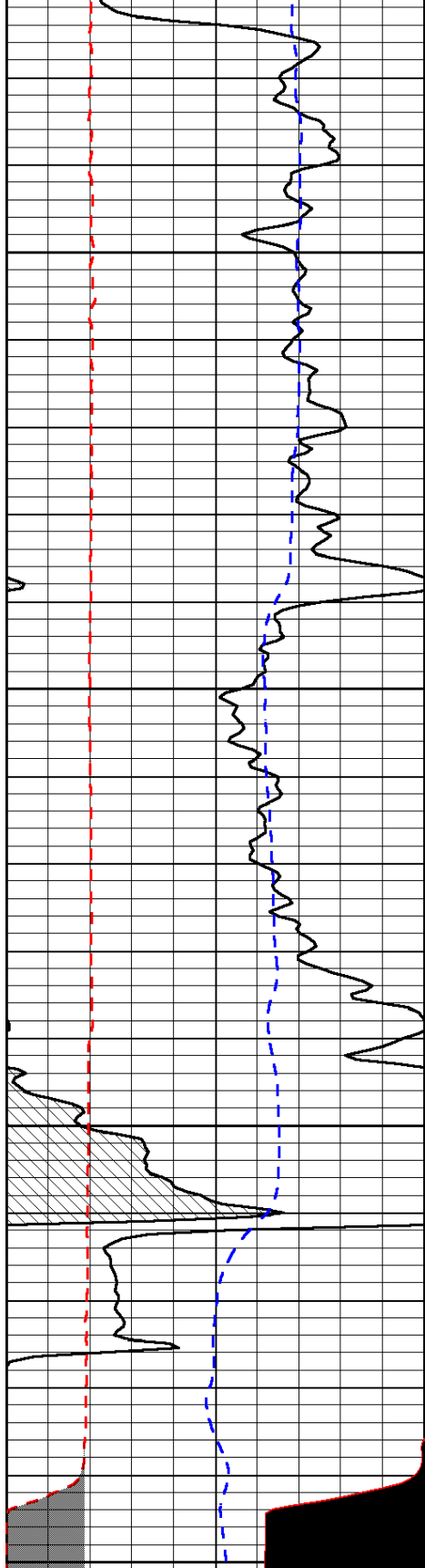


-33

-33

-33

-33



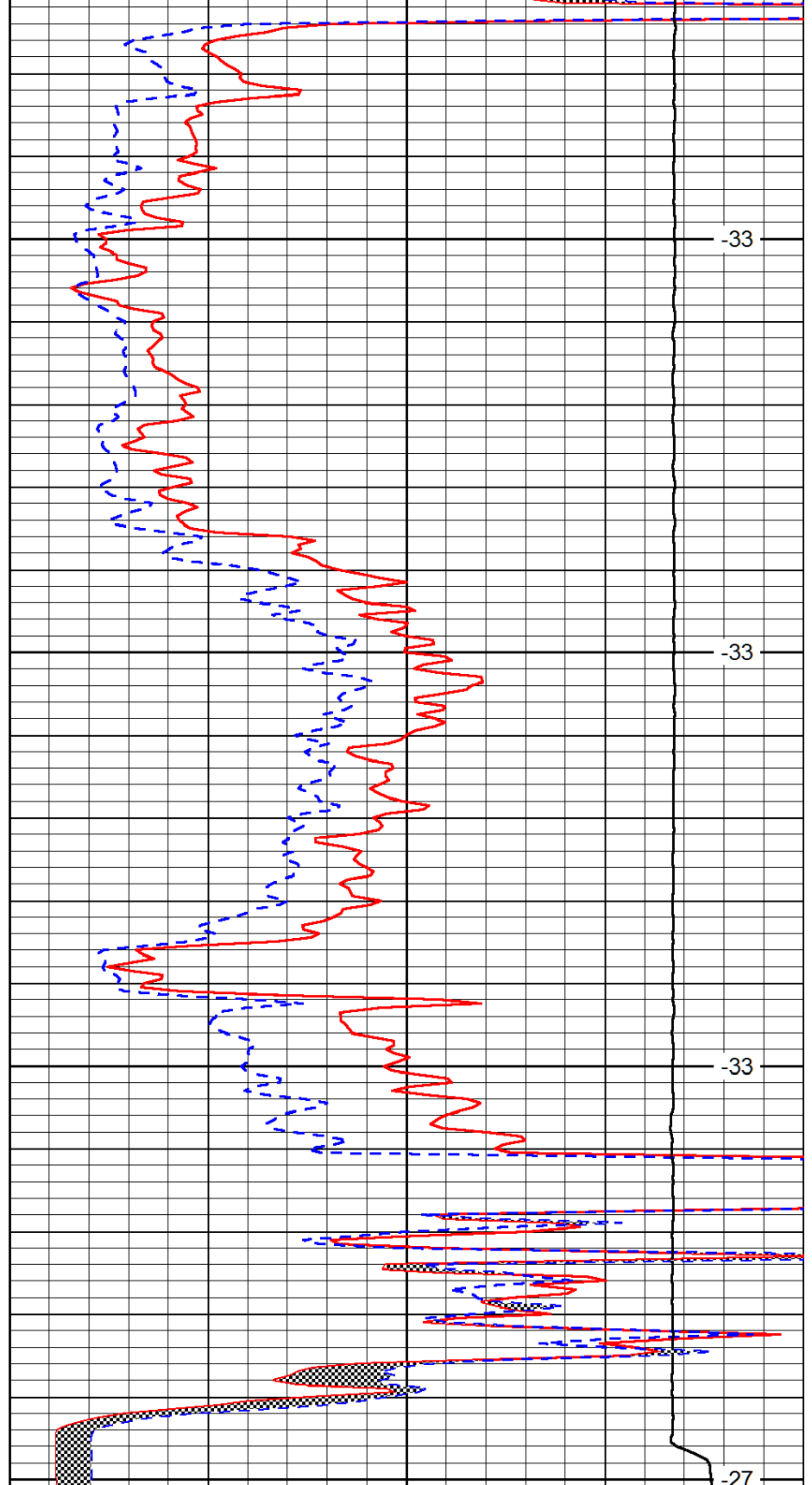
4300

4350

4400

4450

0	Gamma Ray	150
6	MCAL (GAPI)	16
2.875	Mud Cake (GAPI)	7.875
-200	SP (mV)	0



-33

-33

-33

-27

0	Micro Inverse 1 X 1	40
0	Micro Normal 2"	40
10000	Line Weight	0

LSPD