



Pioneer Energy Services

Dual Induction Log

API No.	15-007-24,198-00-00	
Company	Val Energy, Inc.	
Well	Lucille Spicer No. 2	
Field	Meairs	
County	Barber	State
Location	1,010' FNL & 2,280' FWL	
	Sec: 34	Twp: 30s Rge: 12w
Other Services	CNL/CDL MEL	

Permanent Datum	Ground Level	Elevation	1672
Log Measured From	Kelly Bushing	10 Ft. Above Perm. Datum	
Drilling Measured From	Kelly Bushing		
Date	8/12/2014		
Run Number	One		
Depth Driller	4450		
Depth Logger	4446		
Bottom Logged Interval	4445		
Top Log Interval	200		
Casing Driller	8.625 @ 213		
Casing Logger	226		
Bit Size	7.875		
Type Fluid in Hole	Chemical		
Salinity, ppm CL	5000		
Density / Viscosity	9.4	63	
pH / Fluid Loss	10.5	8.8	
Source of Sample	Flowline		
Rm @ Meas. Temp	.65	@ 74	
Rmf @ Meas. Temp	.49	@ 74	
Rmc @ Meas. Temp	.88	@ 74	
Source of Rmf / Rmc	Charts		
Rm @ BHT	.40	@ 121	
Operating Rig Time	4.5 Hours		
Max Rec. Temp. F	121		
Equipment Number	108		
Location	Hays		
Recorded By	J. Long		
Witnessed By	Zeb Stewart		

<<< Fold Here >>>

All interpretations are opinions based on inferences from electrical or other measurements and we cannot and do not guarantee the accuracy or correctness of any interpretation, and we shall not, except in the case of gross or willful negligence on our part, be liable or responsible for any loss, costs, damages, or expenses incurred or sustained by anyone resulting from any interpretation made by any of our officers, agents or employees. These interpretations are also subject to our general terms and conditions set out in our current Price Schedule.

Comments

Thank you for using Log-Tech, Inc.
(785) 625-3858

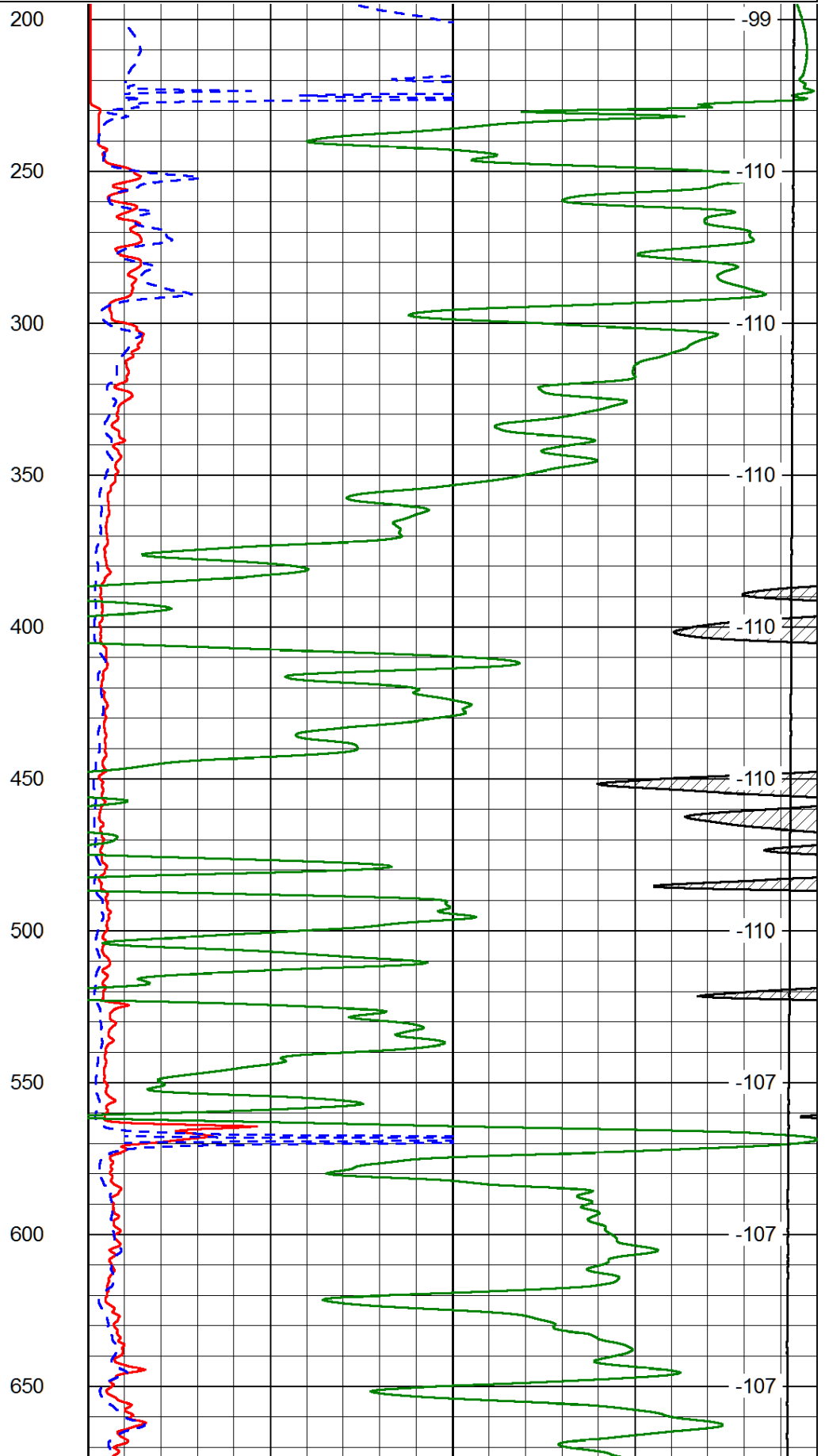
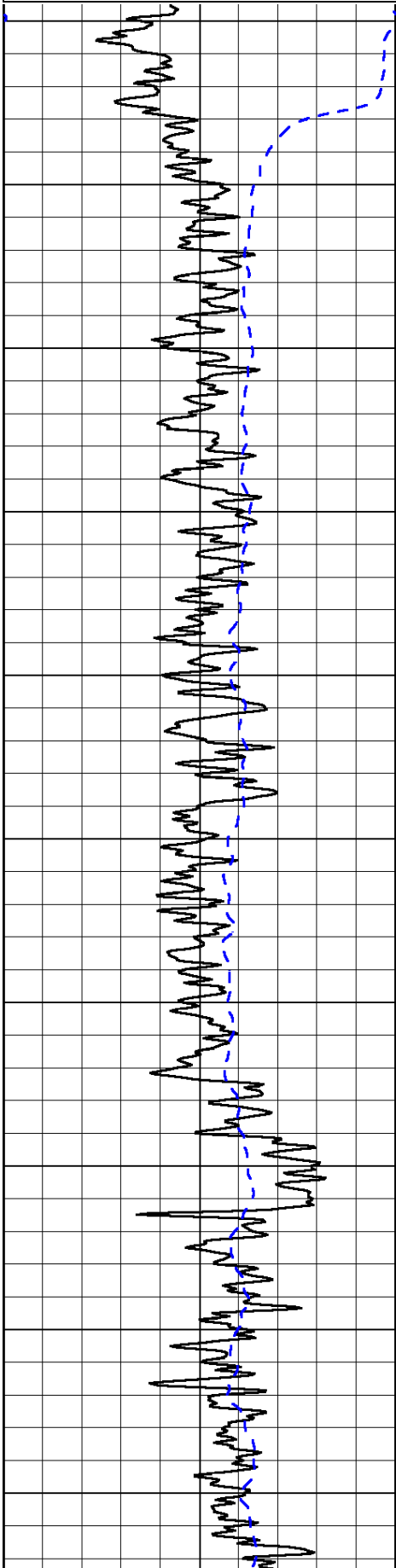
Medicine Lodge KS, 8 North, East Into.

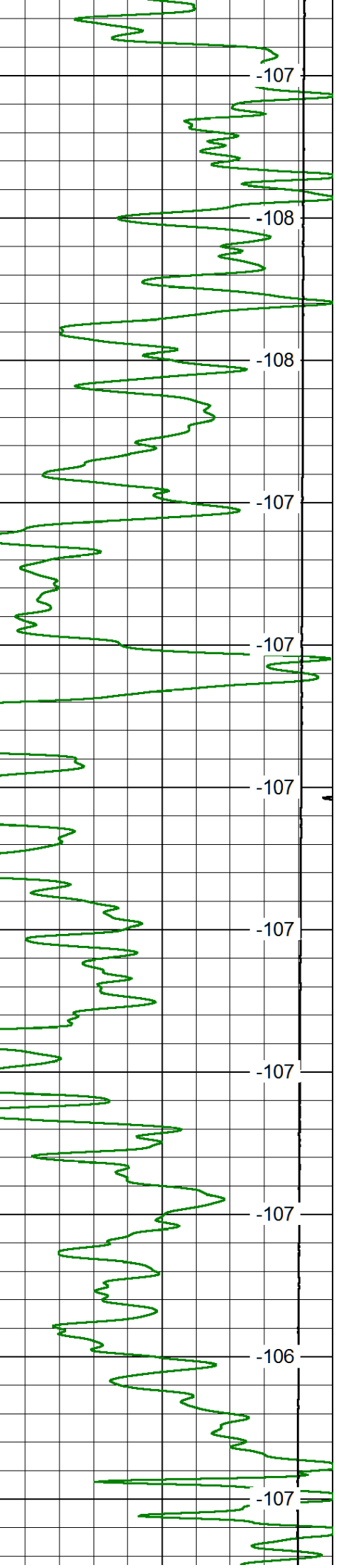
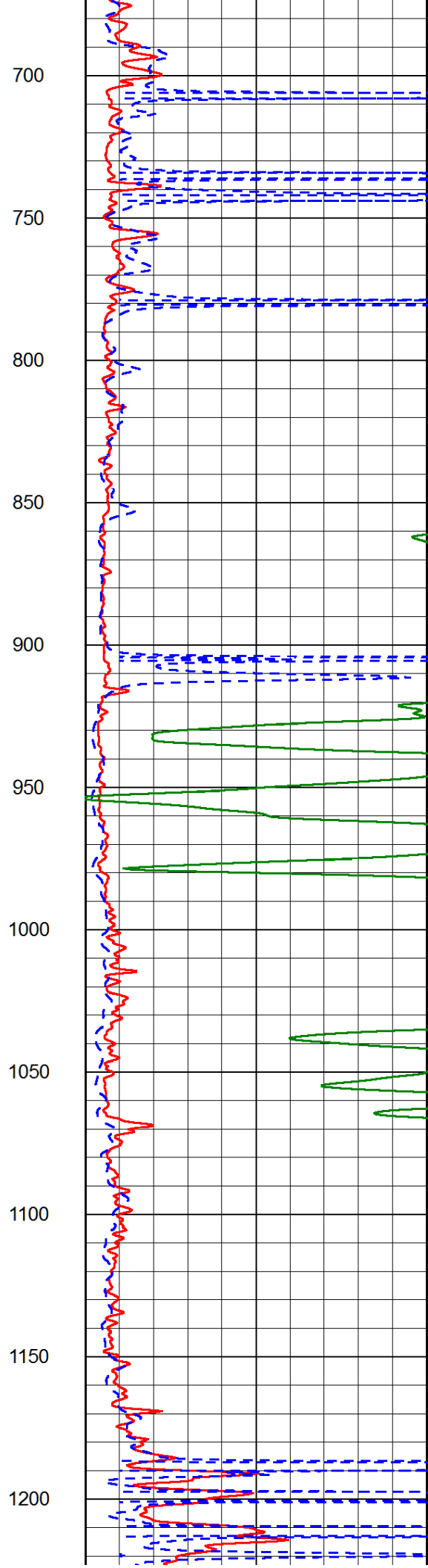
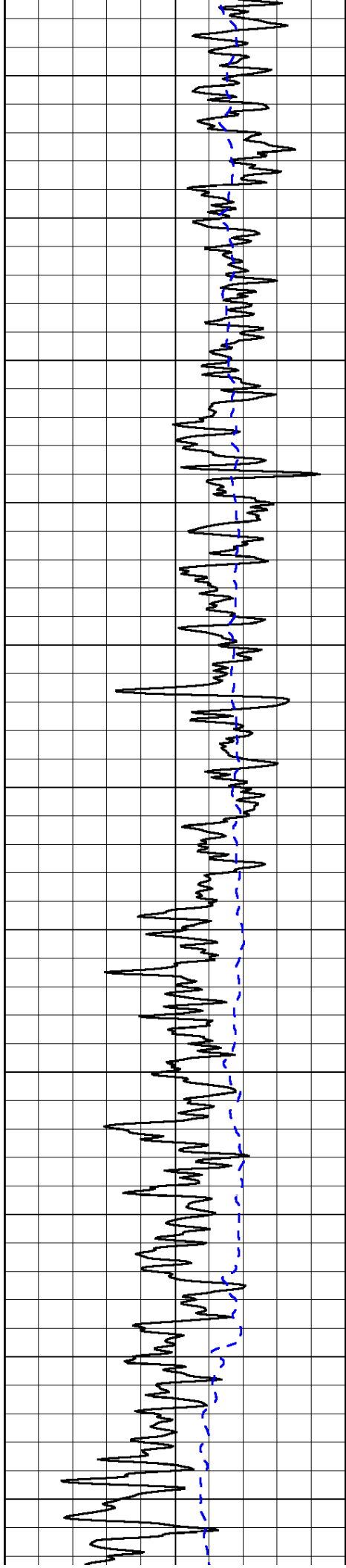
Database File: val_energy_lucile_spicer_2hd.db
 Dataset Pathname: DIL\valstck
 Presentation Format: dil2in
 Dataset Creation: Tue Aug 12 04:21:00 2014
 Charted by: Depth in Feet scaled 1:600

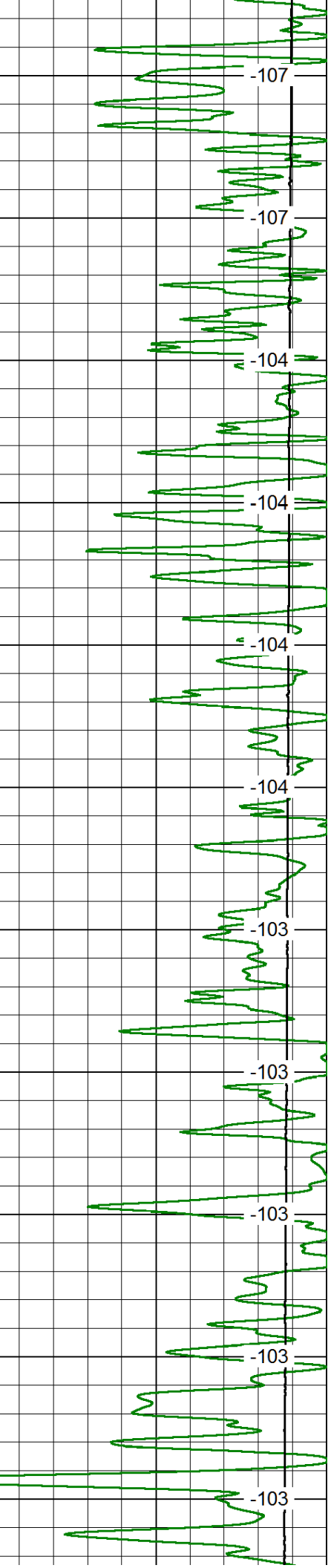
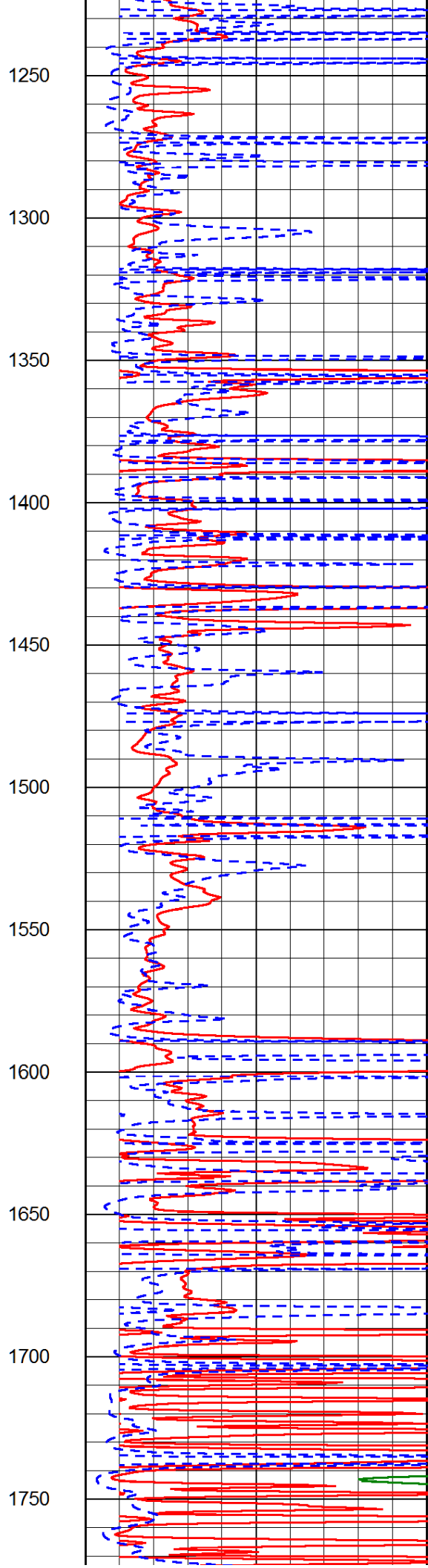
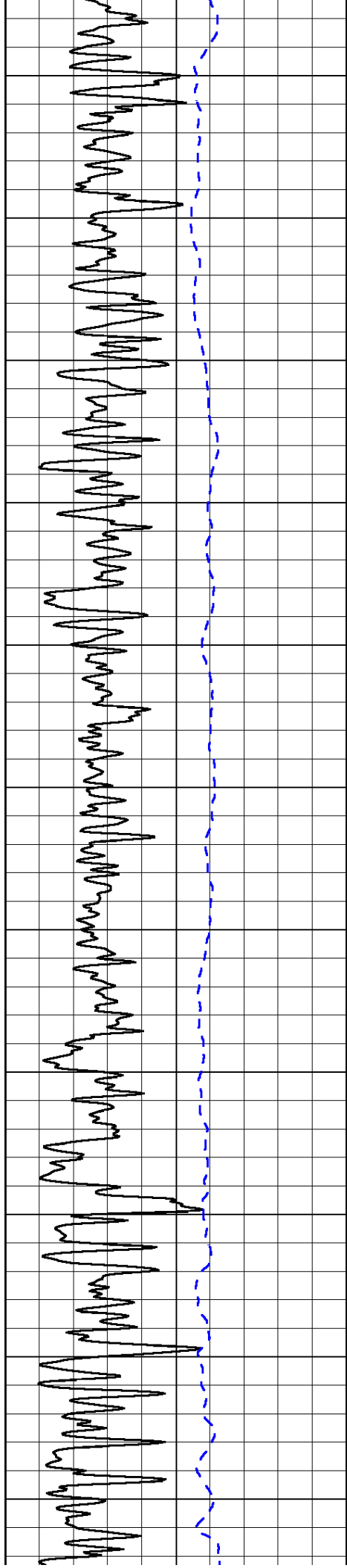
0	Gamma Ray	150
-200	SP (mV)	0

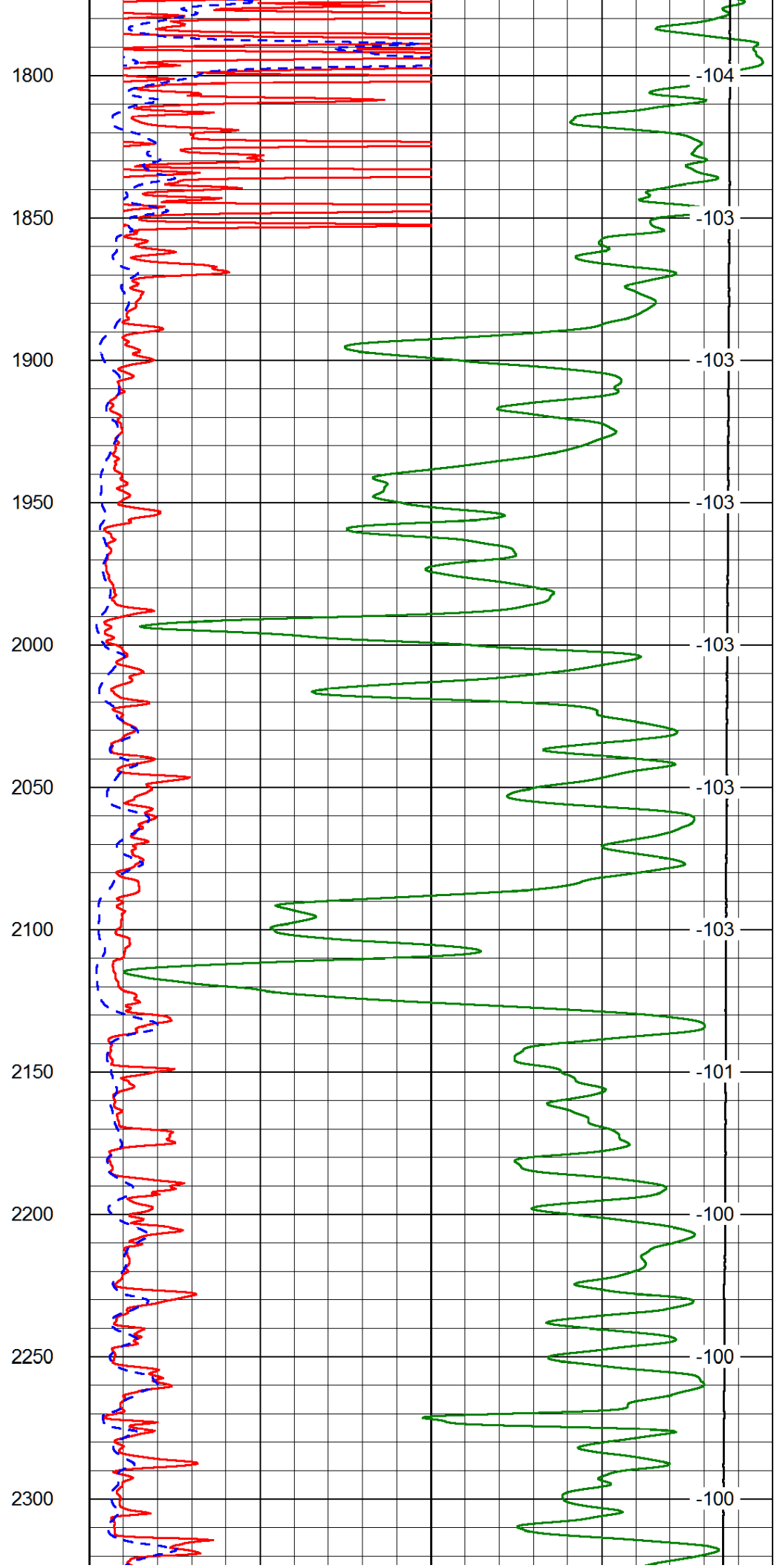
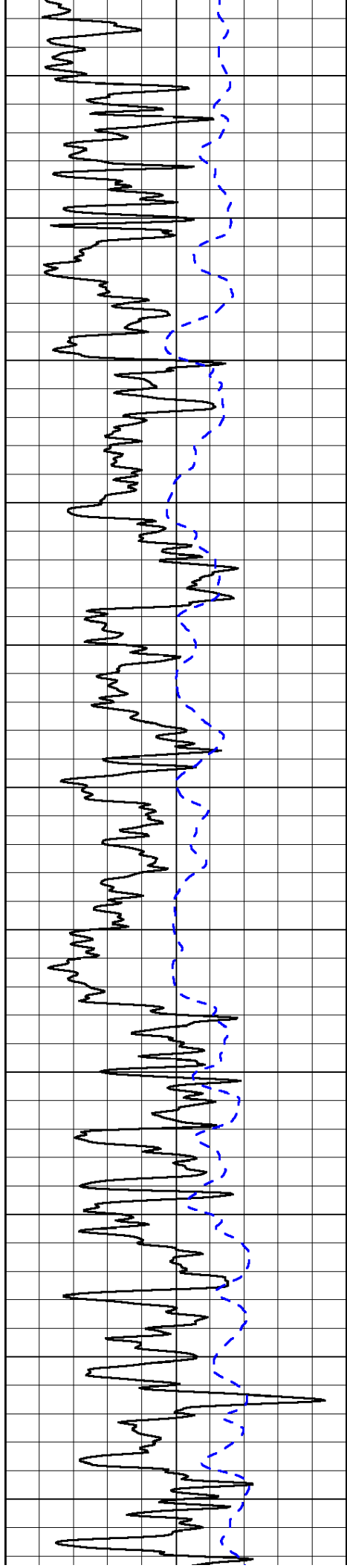
0	Shallow Resistivity	50
0	Deep Resistivity	50
1000	Conductivity	0
15000	Line Tension	0
50	Shallow Resistivity	500
50	Deep Resistivity	500

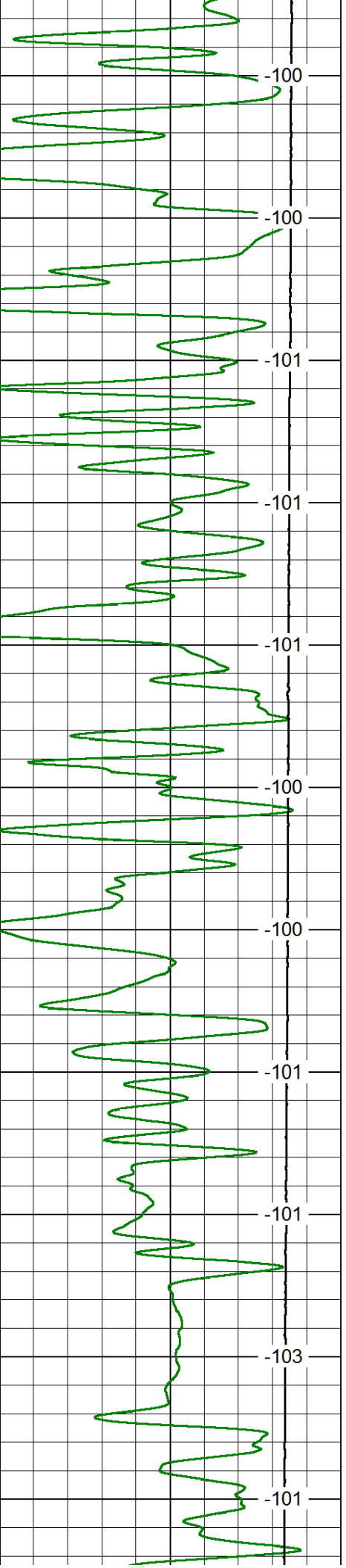
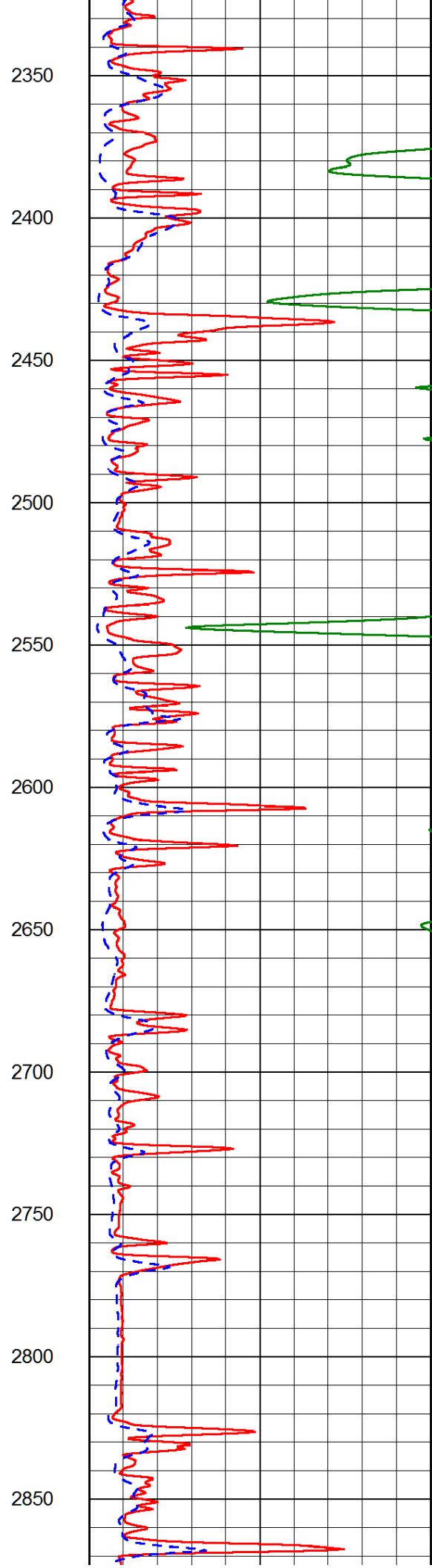
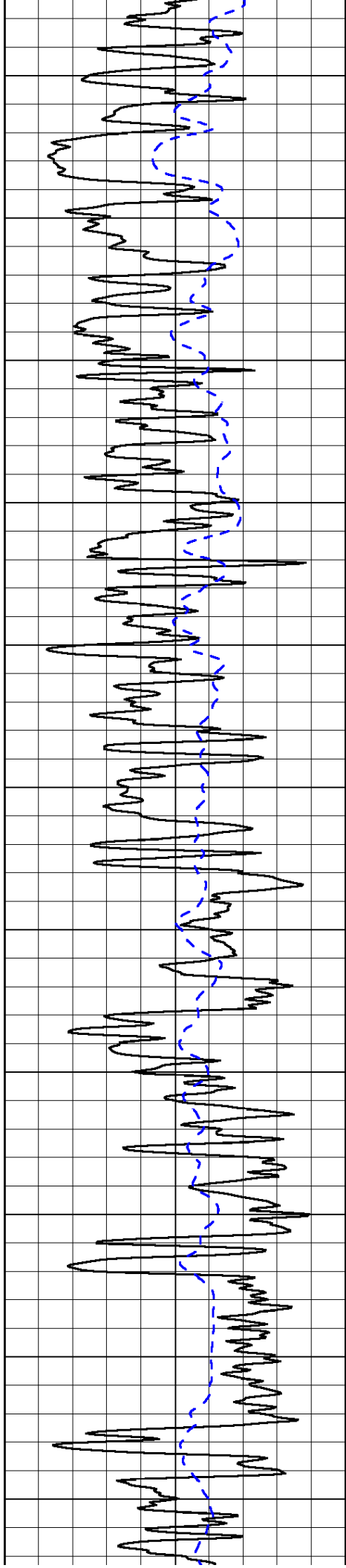
LSPD

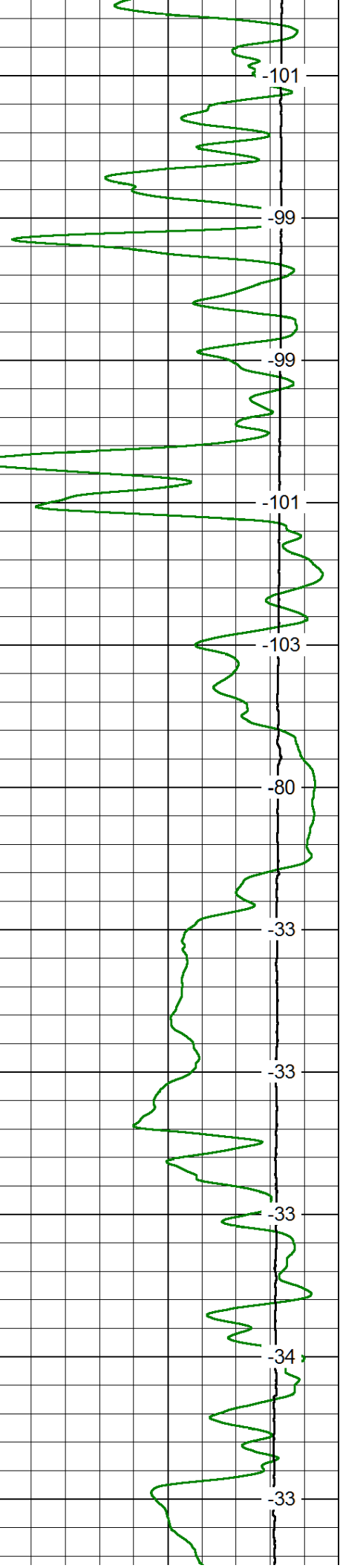
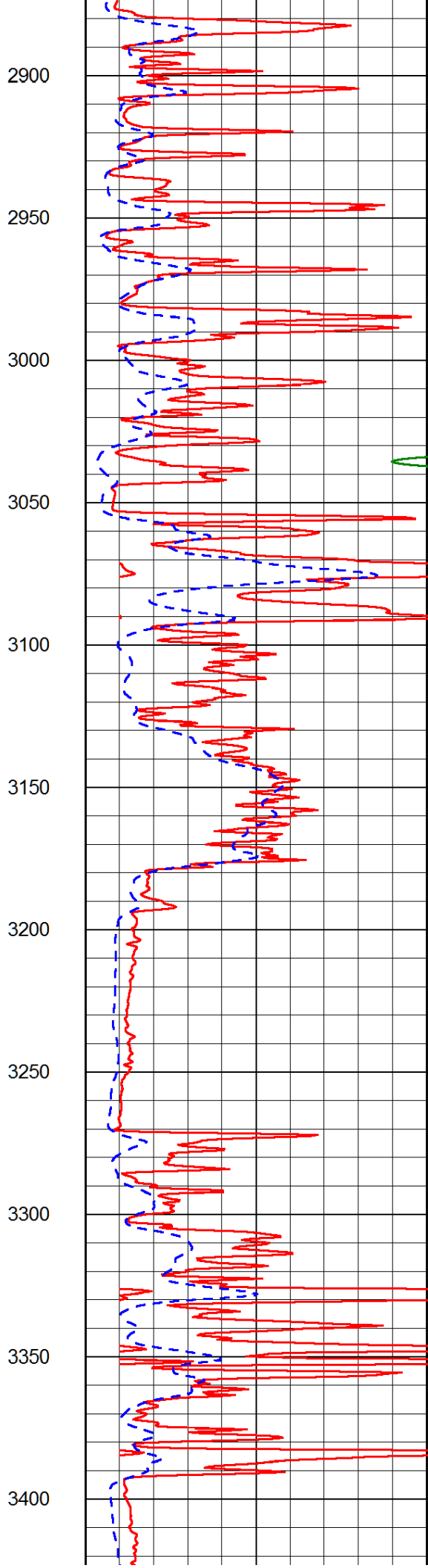
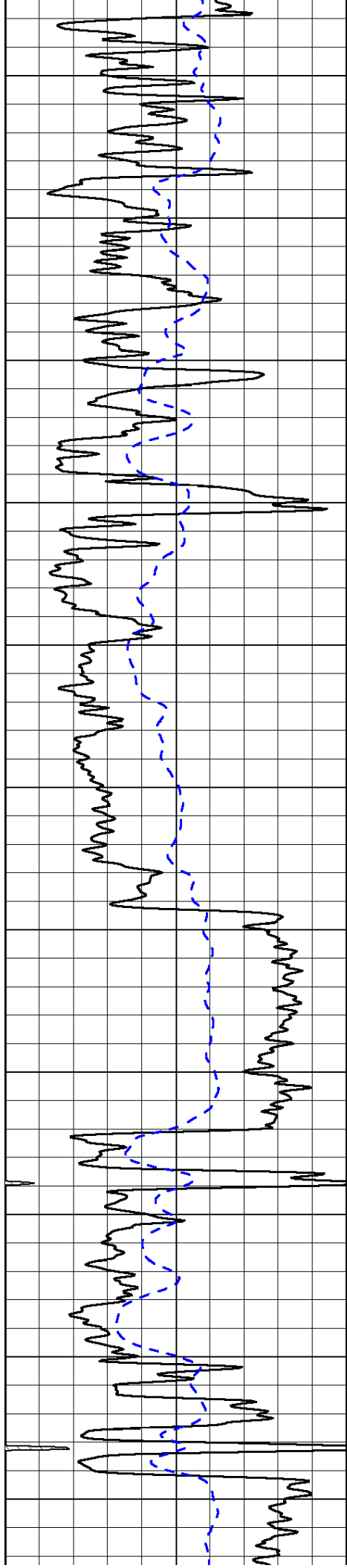


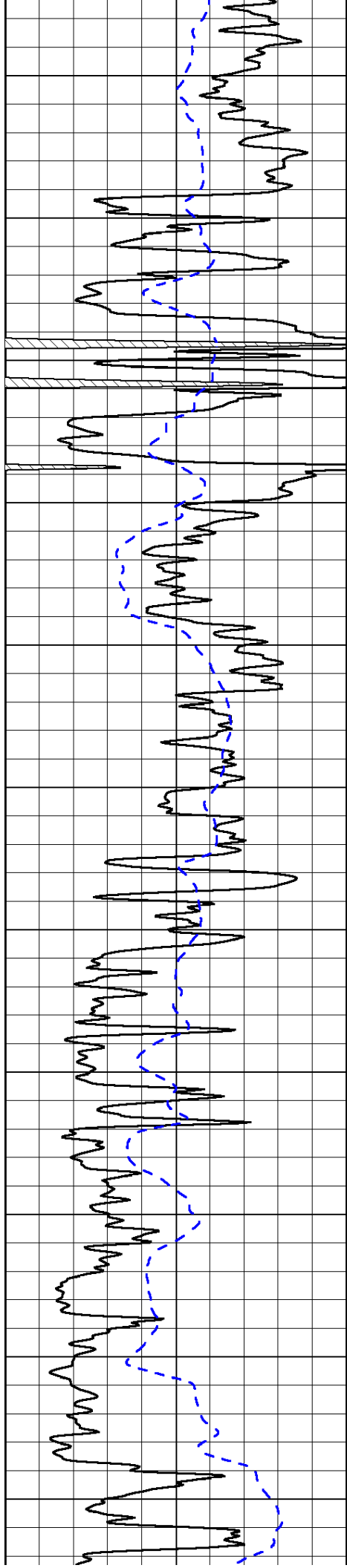




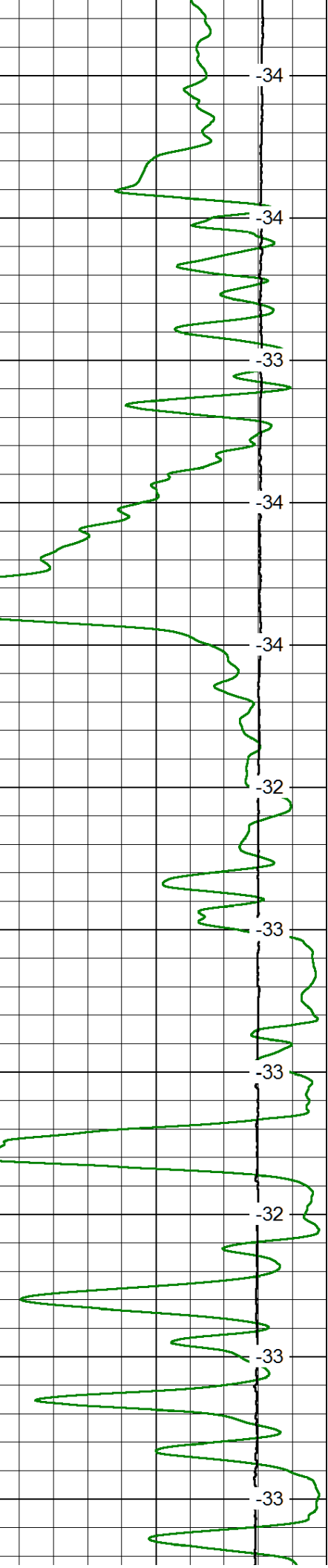
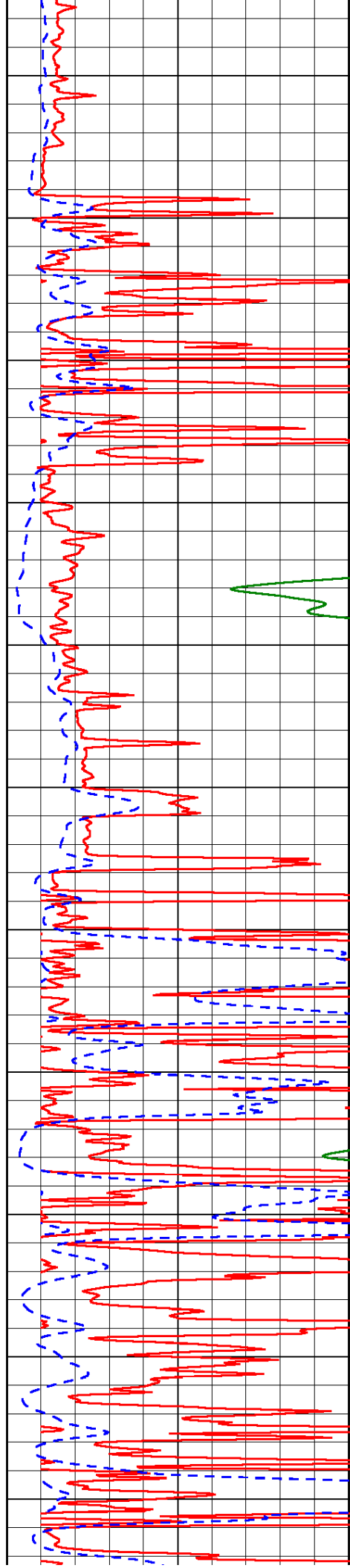




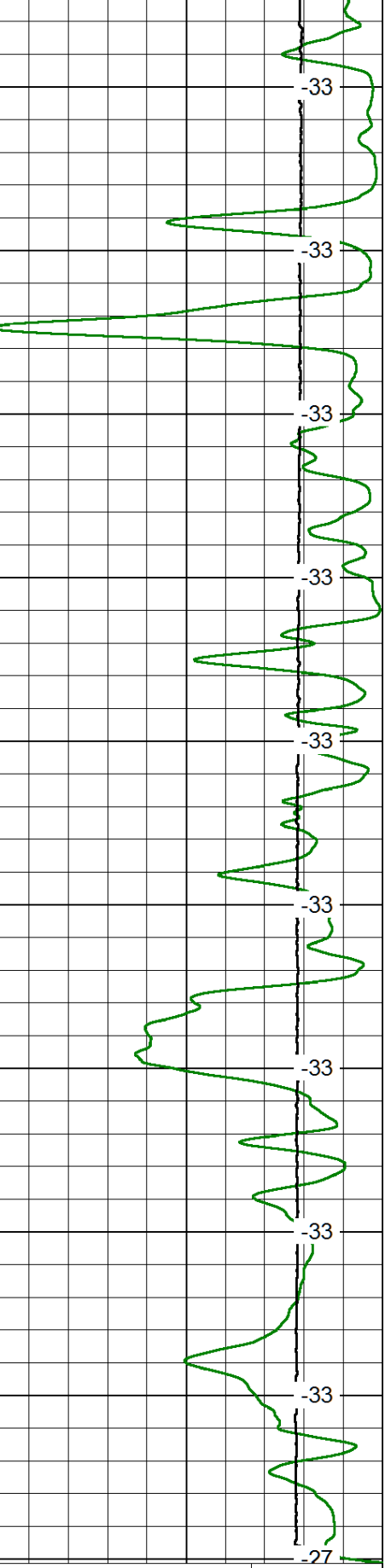
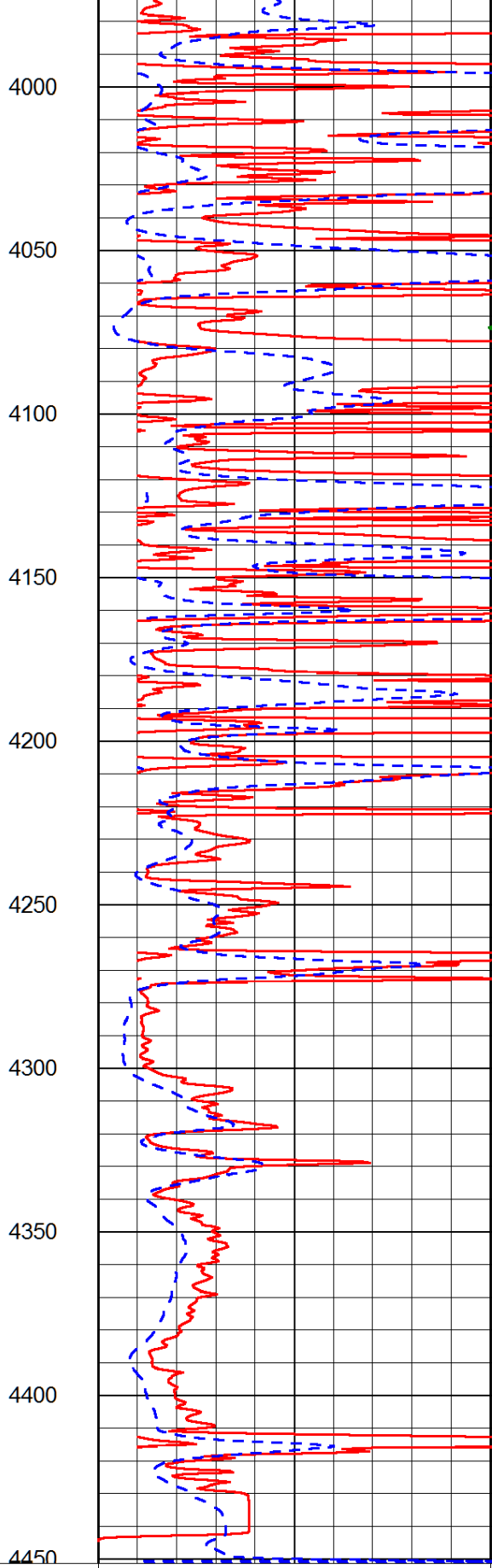
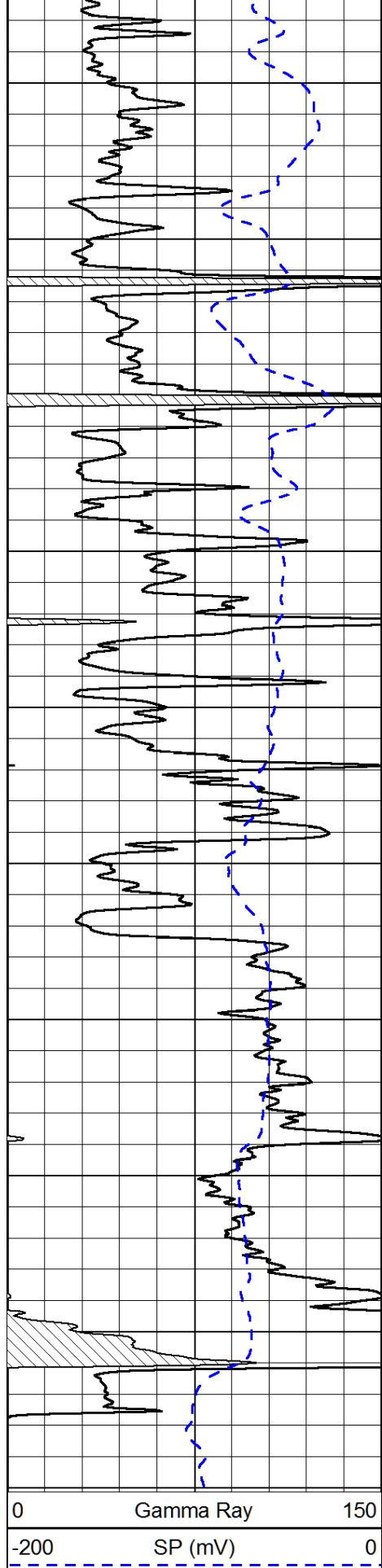




3450
3500
3550
3600
3650
3700
3750
3800
3850
3900
3950



-34
-34
-33
-34
-34
-32
-33
-33
-32
-33
-33



0 150

-200 0

0 50

0 50

1000 Conductivity 0

15000 Line Tension 0

50 Shallow Resistivity 500

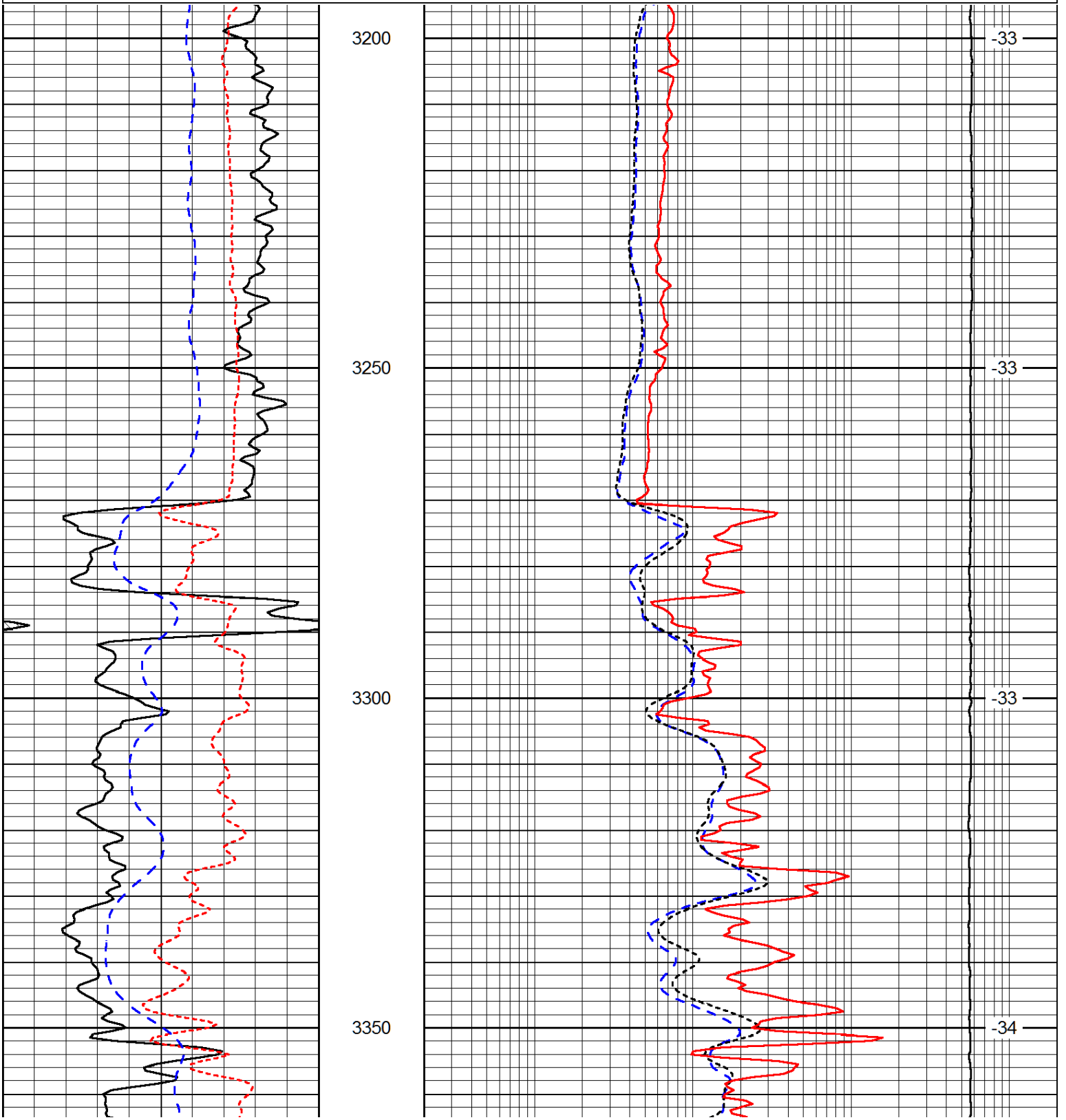
50 Deep Resistivity 500

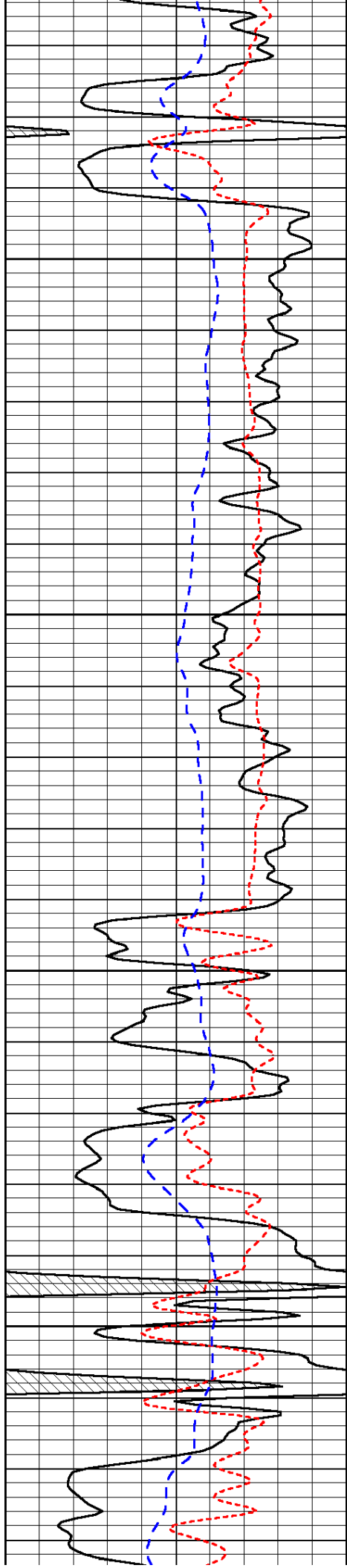
Database File: val_energy_lucile_spicer_2hd.db
 Dataset Pathname: DIL/valstck
 Presentation Format: dil
 Dataset Creation: Tue Aug 12 04:21:00 2014
 Charted by: Depth in Feet scaled 1:240

0	Gamma Ray	150
-160	RXO/RT	40
-200	SP (mV)	0

0.2	Deep Resistivity	2000
0.2	Medium Resistivity	2000
0.2	Shallow Resistivity	2000
10000	Line Tension	0

LSPD





3400

3450

3500

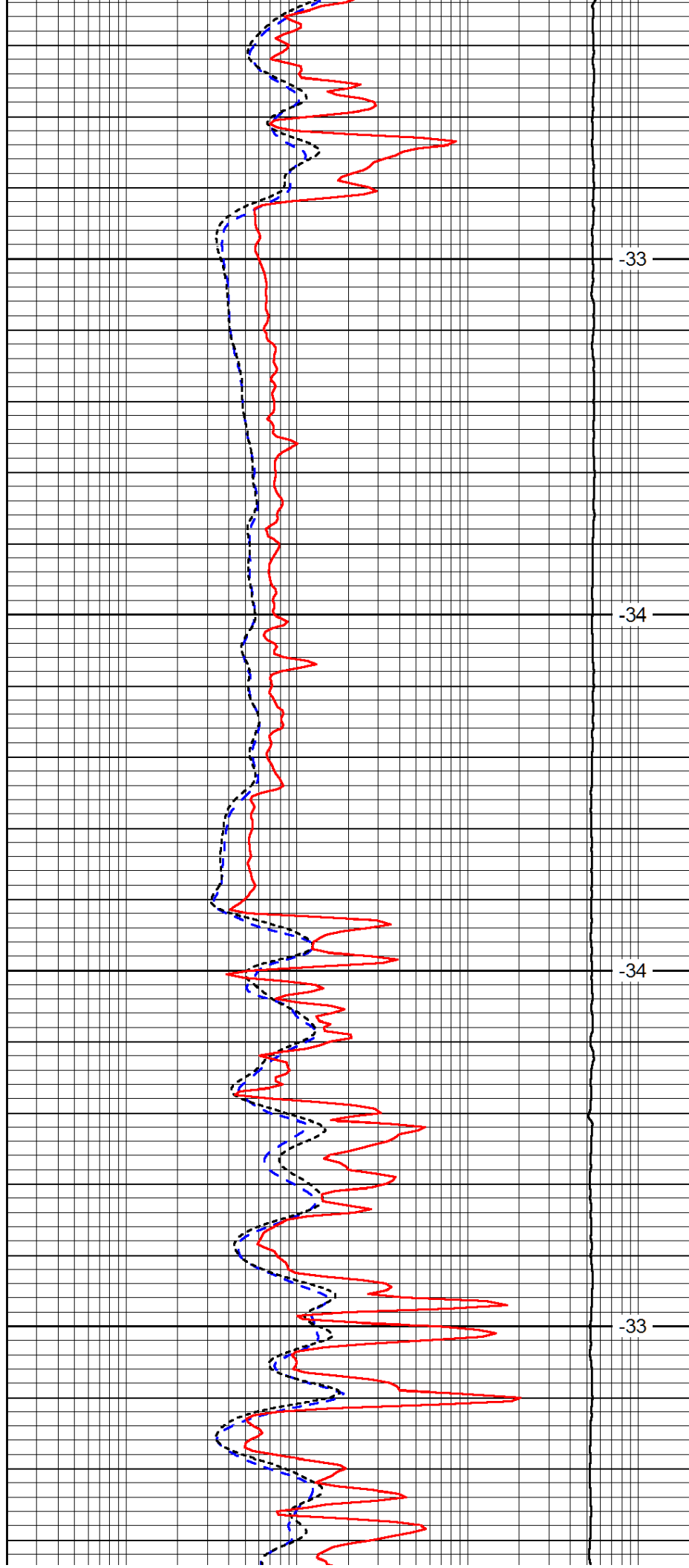
3550

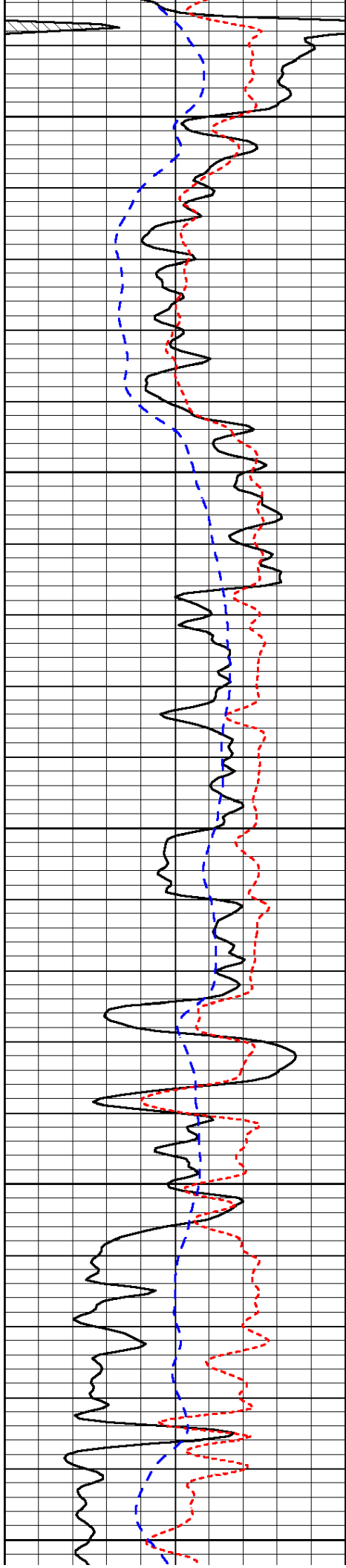
-33

-34

-34

-33





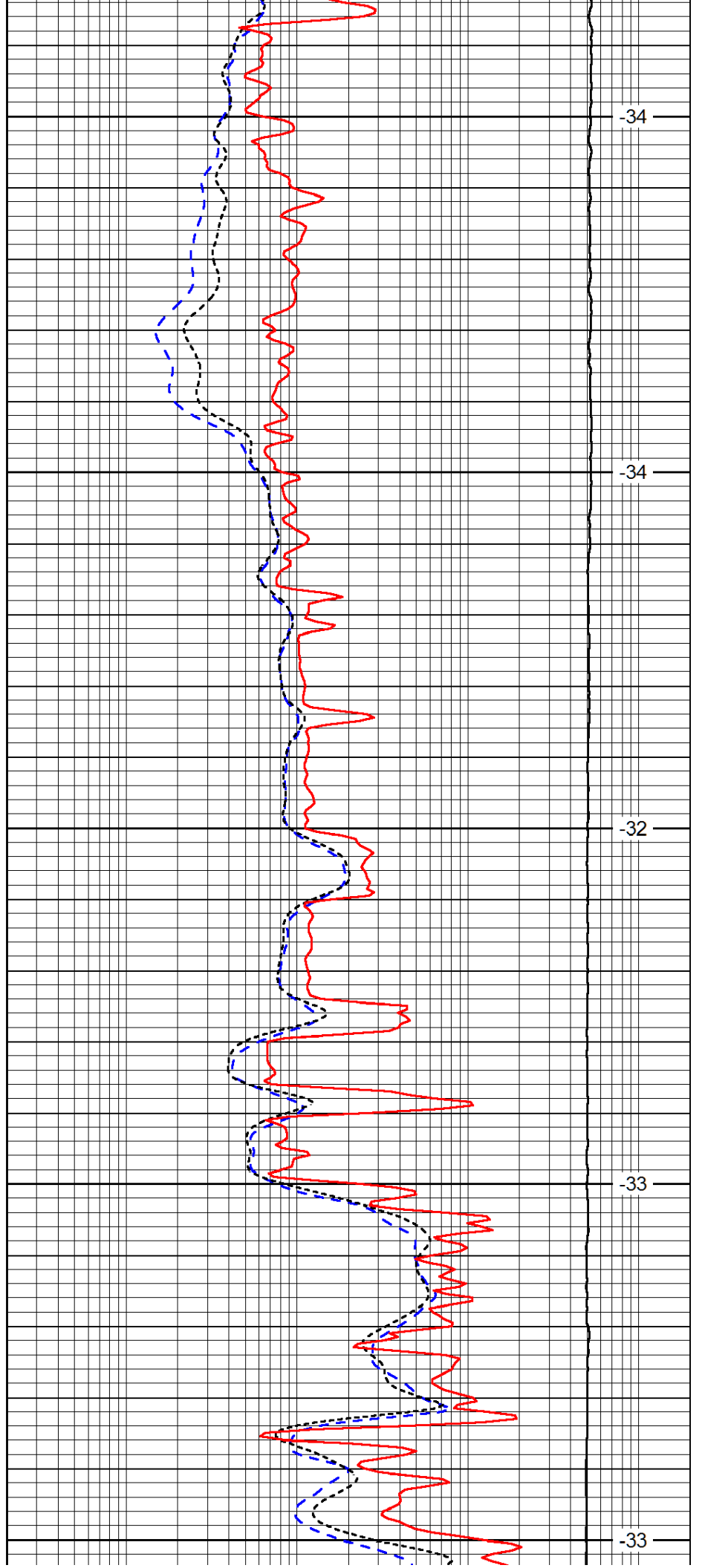
3600

3650

3700

3750

3800



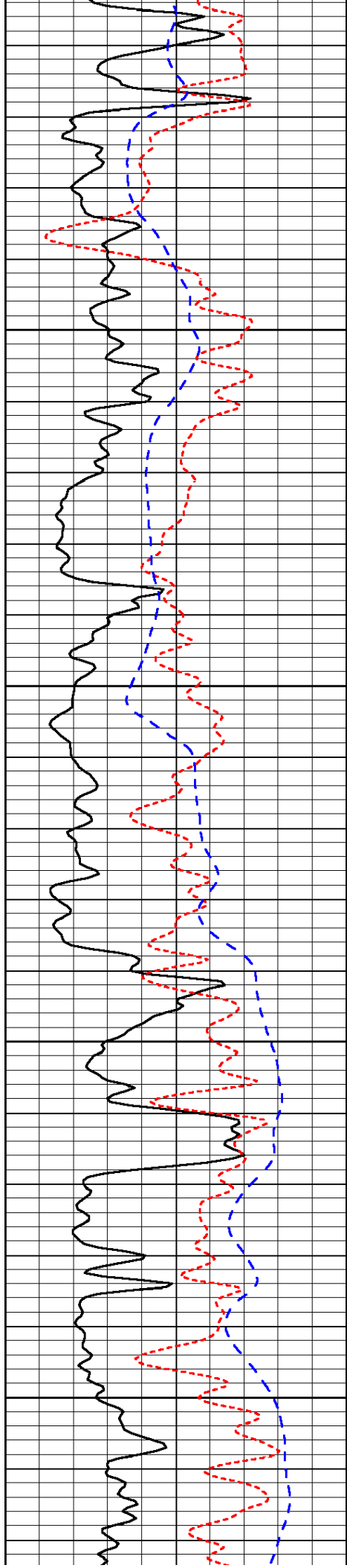
-34

-34

-32

-33

-33

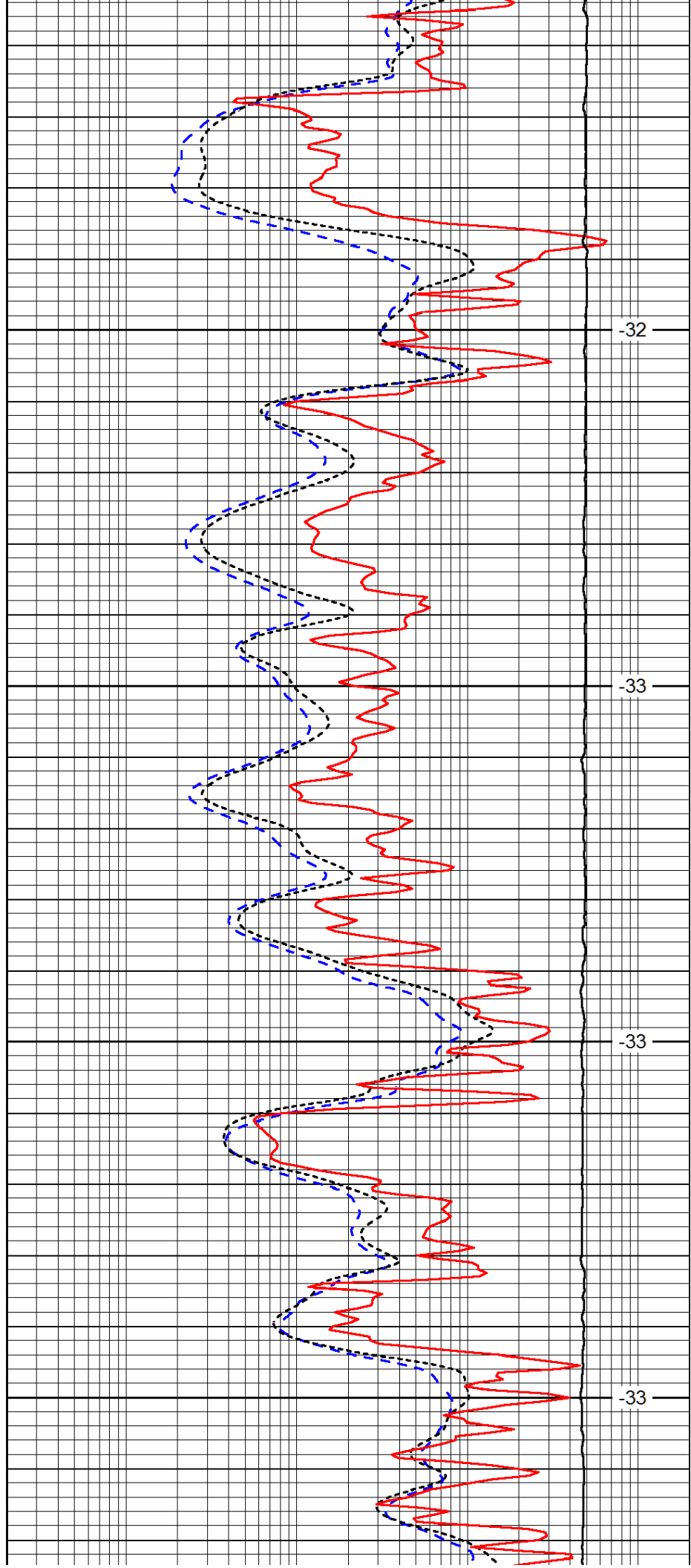


3850

3900

3950

4000

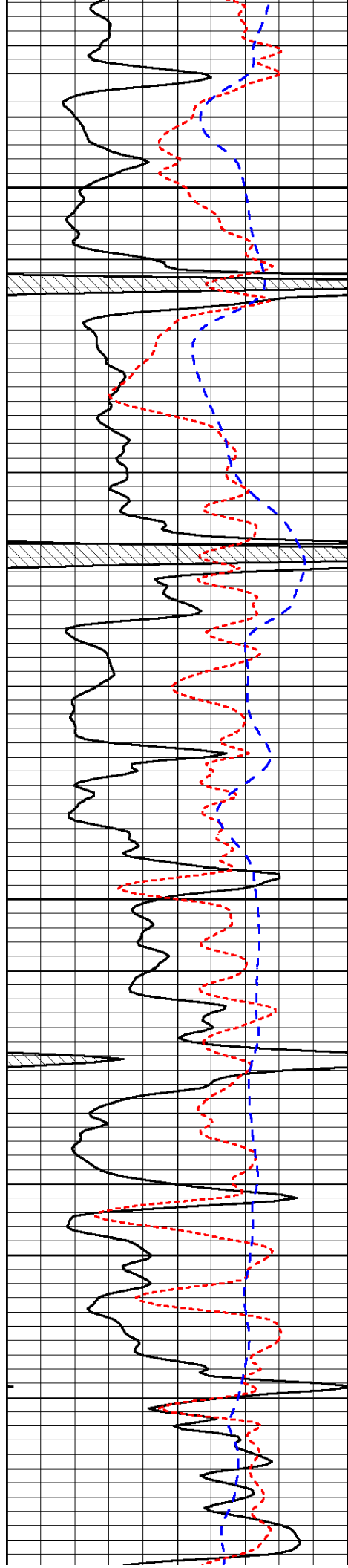


-32

-33

-33

-33

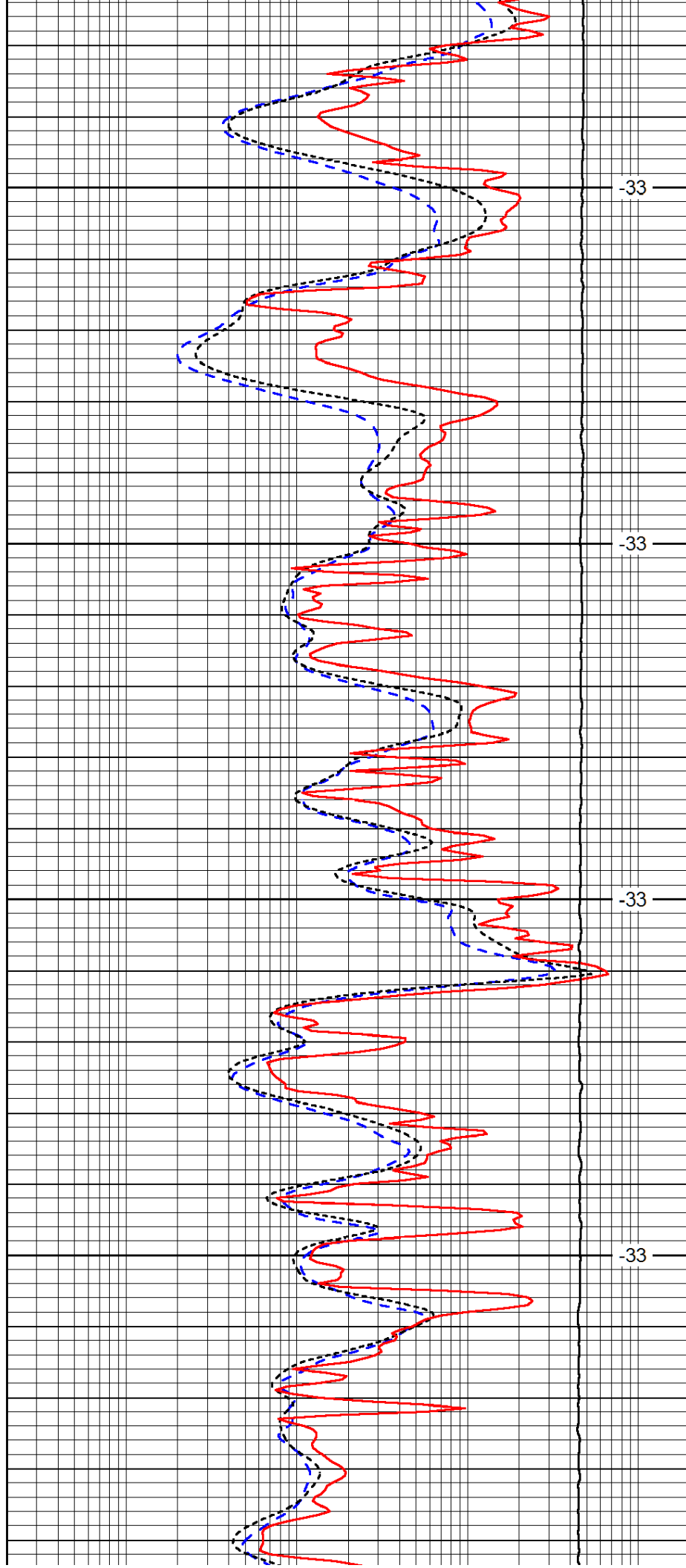


4050

4100

4150

4200

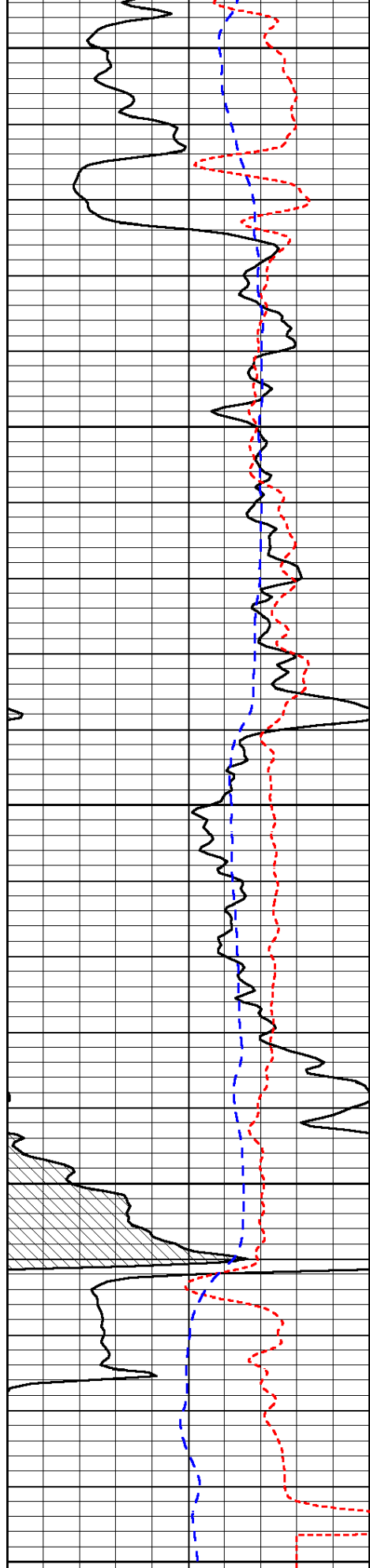


-33

-33

-33

-33



4250

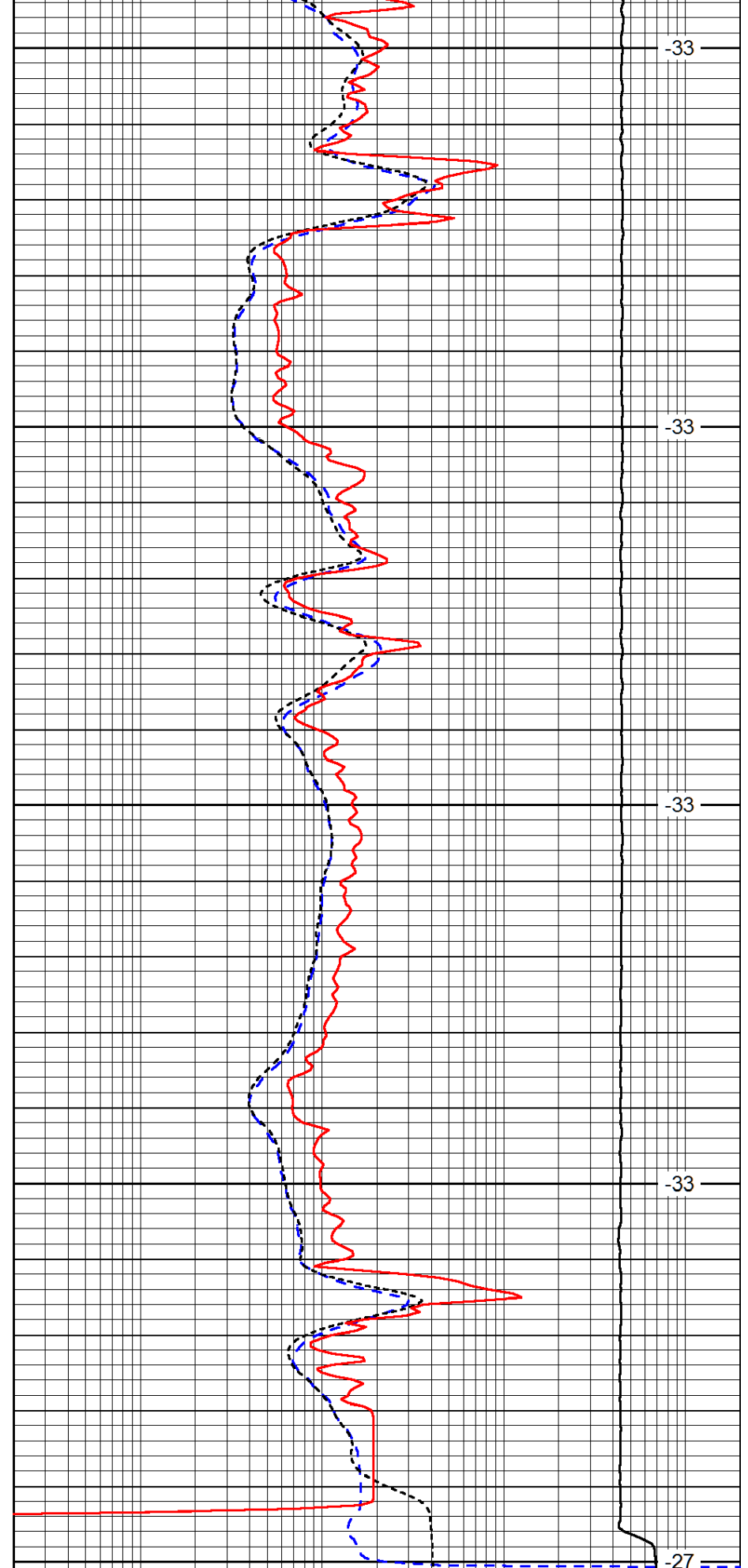
4300

4350

4400

4450

0	Gamma Ray	150
-160	RXO/RT	40
-200	SP (mV)	0



-33

-33

-33

-33

-27

0.2	Deep Resistivity	2000
0.2	Medium Resistivity	2000
0.2	Shallow Resistivity	2000

10000	Line Tension	0
		LSPD