



Pioneer Energy Services

# Microresistivity Log

15-035-24565-00-00

API No.

Company **Phillips Oil Properties, Inc.**

Well **Kerr #6-1**

Field **Wilson**

County **Cowley**

State

**Kansas**

Location **590' FNL & 730' FEL**

Other Services  
CNL/CDL  
DIL

Sec: **6** Twp: **33S** Rge: **6E**

Permanent Datum **Ground Level** Elevation **1301**

Log Measured From **Kelly Bushing** 9 Ft. Above Perm. Datum

Elevation  
K.B. 1310  
D.F. 1310  
G.L. 1301

Drilling Measured From **Kelly Bushing**

Date **7/22/2014**

Run Number **Two**

Depth Driller **3415**

Depth Logger **3415**

Bottom Logged Interval **3414**

Top Log Interval **300**

Casing Driller **8.625 @ 329**

Casing Logger **340**

Bit Size **7.875**

Type Fluid in Hole **Chemical**

Salinity, ppm CL **750**

Density / Viscosity **9.3 42**

pH / Fluid Loss **9.5 11.9**

Source of Sample **Flowline**

Rm @ Meas. Temp **2.80 @ 96**

Rmf @ Meas. Temp **2.10 @ 96**

Rmc @ Meas. Temp **3.78 @ 96**

Source of Rmf / Rmc **Charts**

Rm @ BHT **2.44 @ 110**

Operating Rig Time **4 Hours**

Max Rec. Temp. F **110**

Equipment Number **91**

Location **Hays**

Recorded By **D. Schmidt**

Witnessed By **Troy Phillips**

<<< Fold Here >>>

All interpretations are opinions based on inferences from electrical or other measurements and we cannot and do not guarantee the accuracy or correctness of any interpretation, and we shall not, except in the case of gross or willful negligence on our part, be liable or responsible for any loss, costs, damages, or expenses incurred or sustained by anyone resulting from any interpretation made by any of our officers, agents or employees. These interpretations are also subject to our general terms and conditions set out in our current Price Schedule.

### Comments

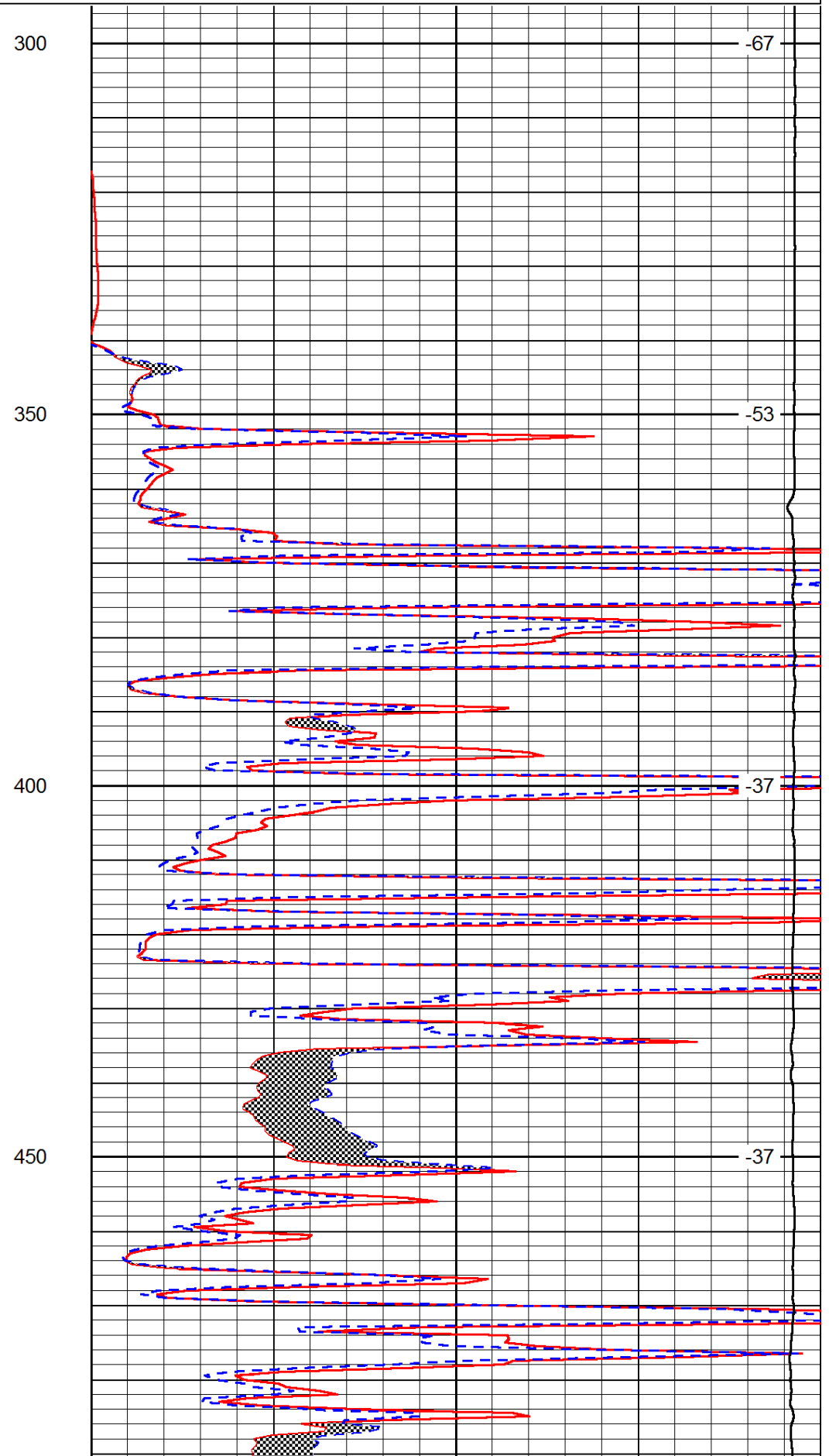
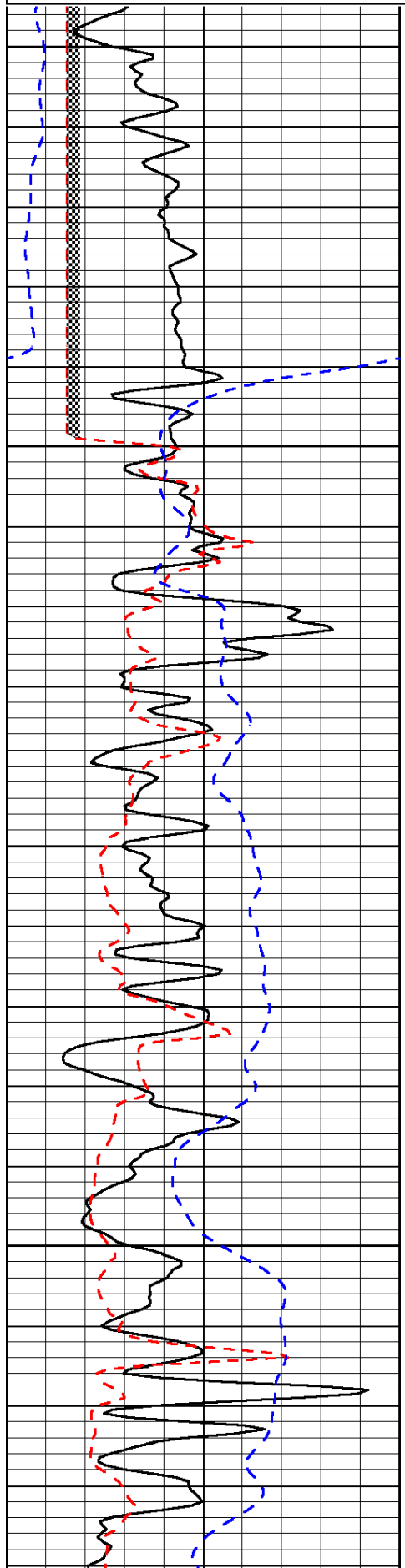
Thank you for using Pioneer Energy Services  
[www.pioneerenergy.com](http://www.pioneerenergy.com)  
 785 625 3858  
 Winfield,  
 East to 201 Rd, 1 South,  
 1 West, 1 South, 1/8 West,  
 South into

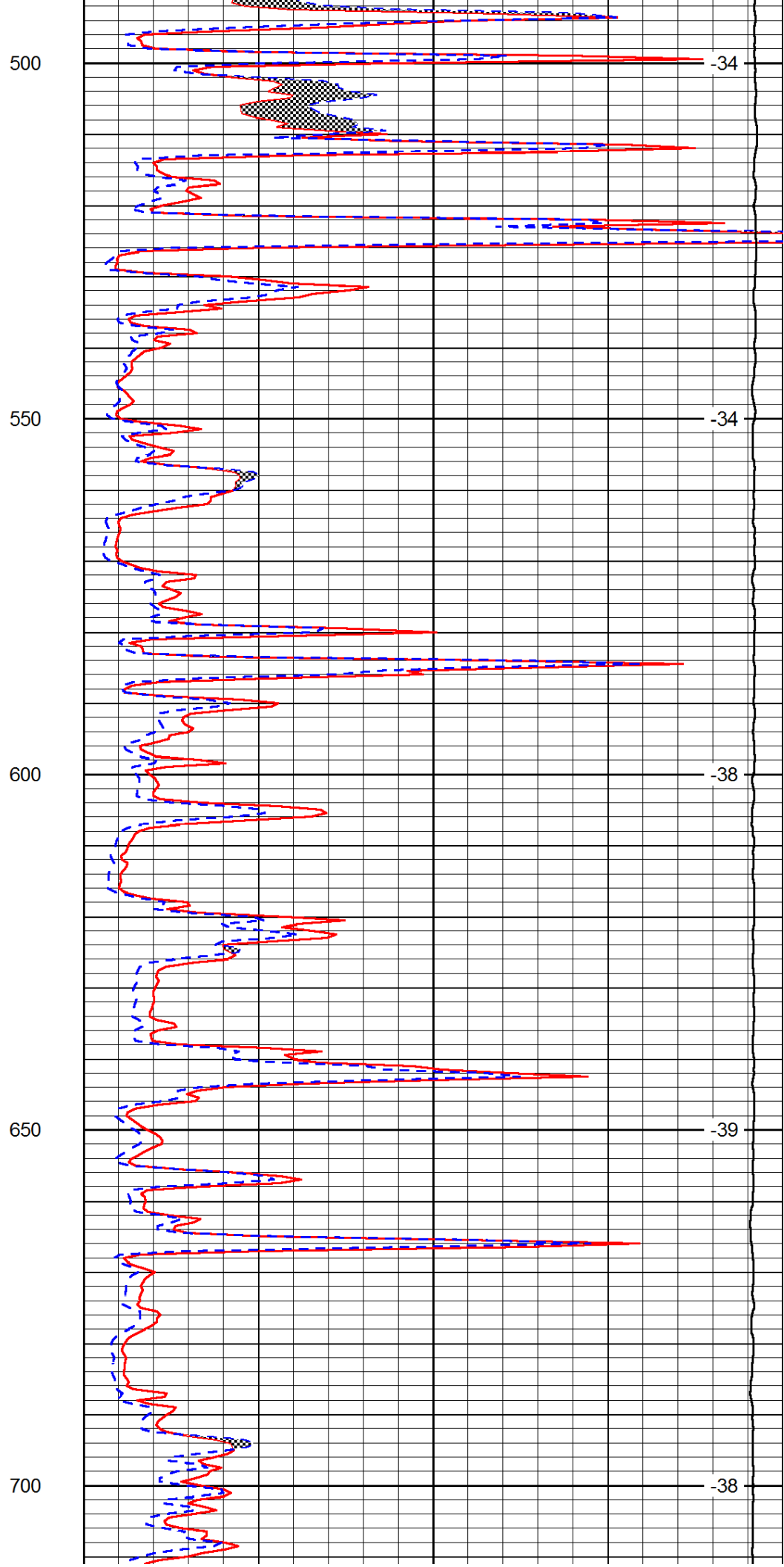
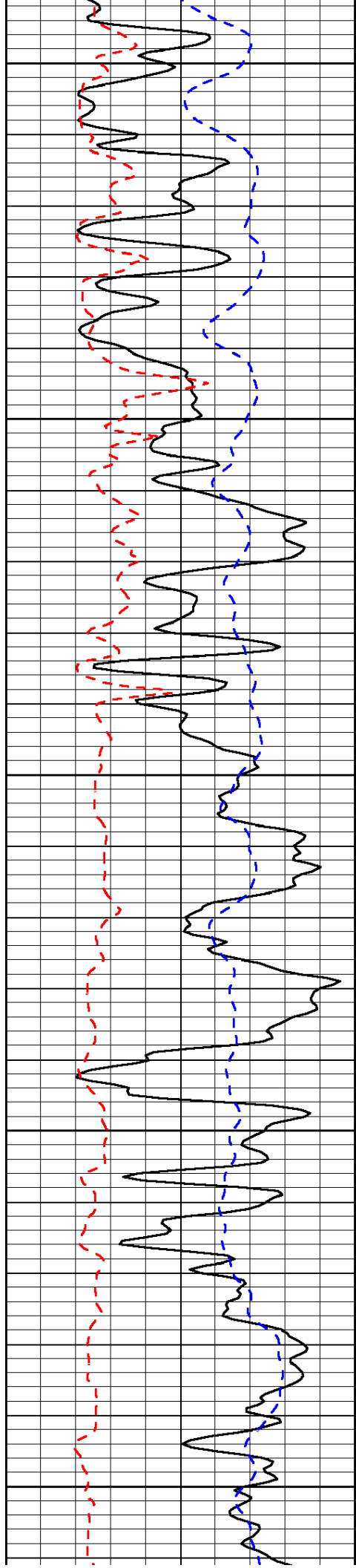
Database File: c:\warrior\data\phillips oil prop\_kerr #6-1\phillips\_kerr\_6-1hd.db  
 Dataset Pathname: dil/phstack  
 Presentation Format: micro  
 Dataset Creation: Tue Jul 22 18:00:04 2014  
 Charted by: Depth in Feet scaled 1:240

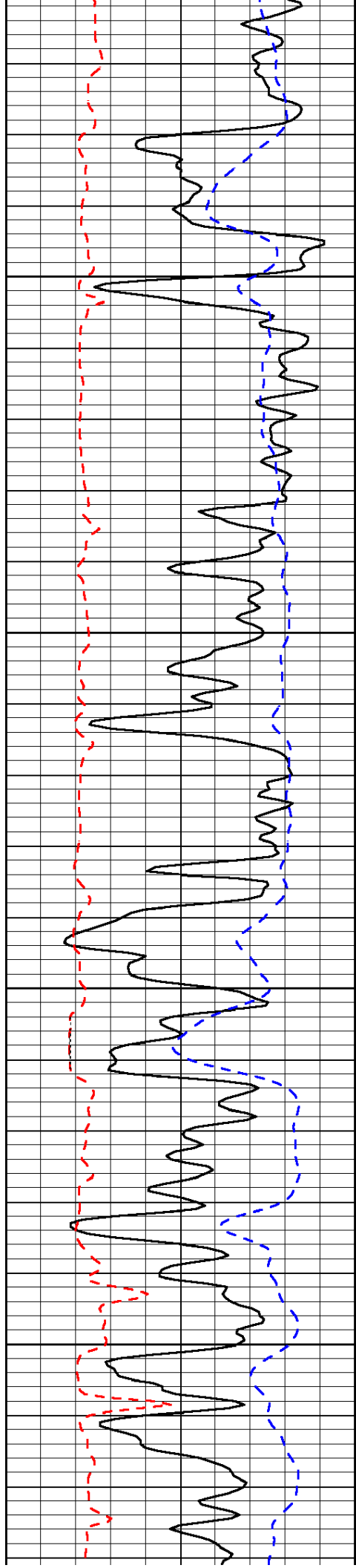
0	Gamma Ray	150
6	Micro Log Caliper (GAPI)	16
-200	SP (mV)	0

0	Micro Inverse 1 X 1	40
0	Micro Normal 2"	40
15000	Line Weight	0

LSPD





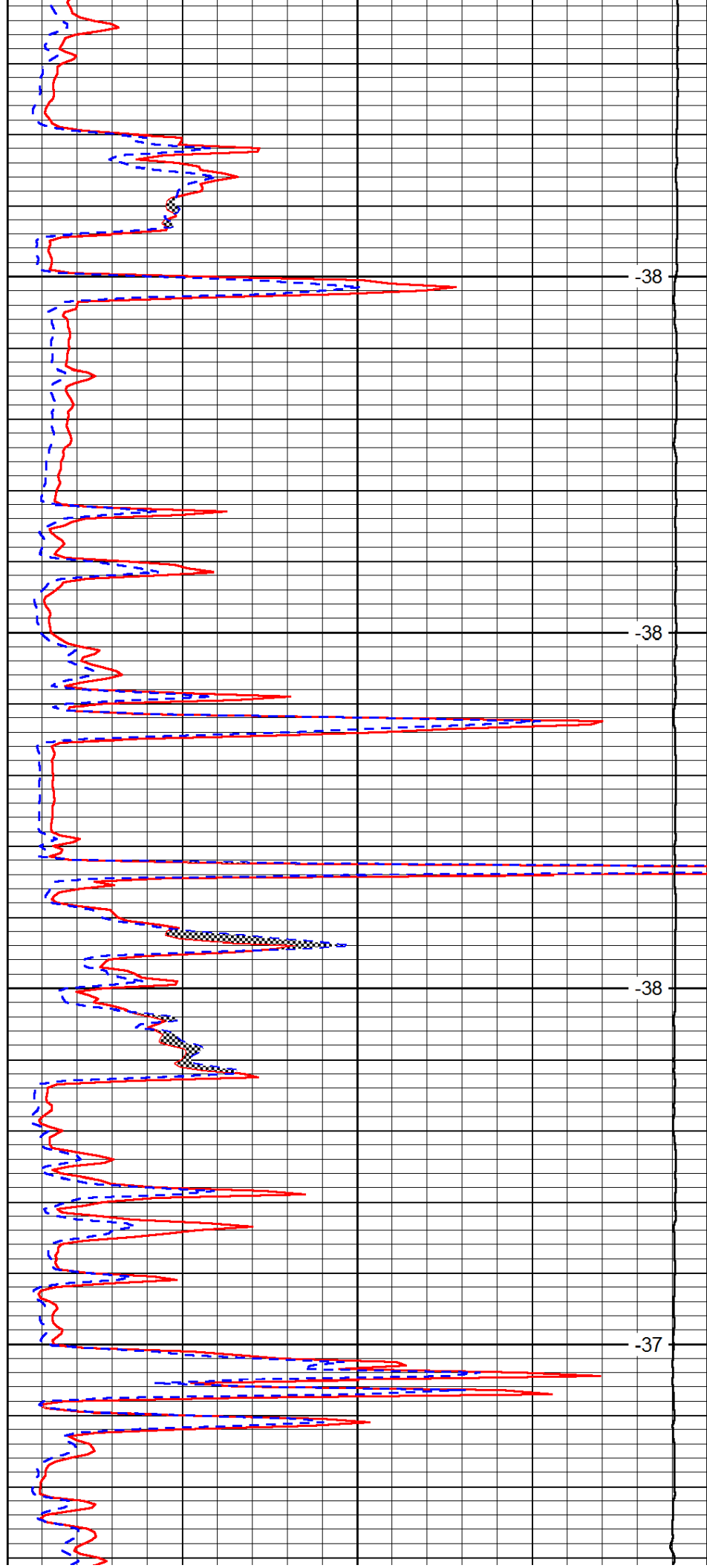


750

800

850

900

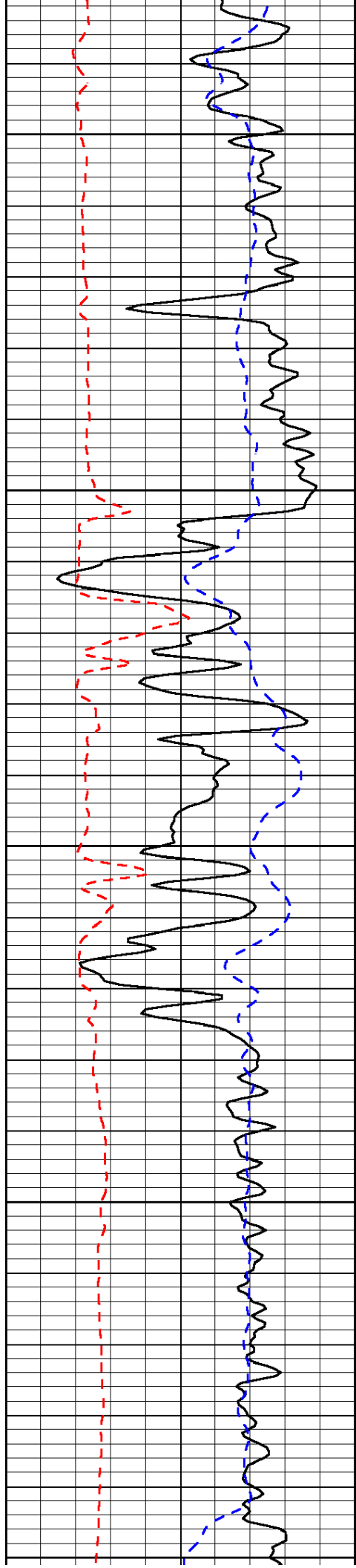


-38

-38

-38

-37



950

-37

1000

-39

1050

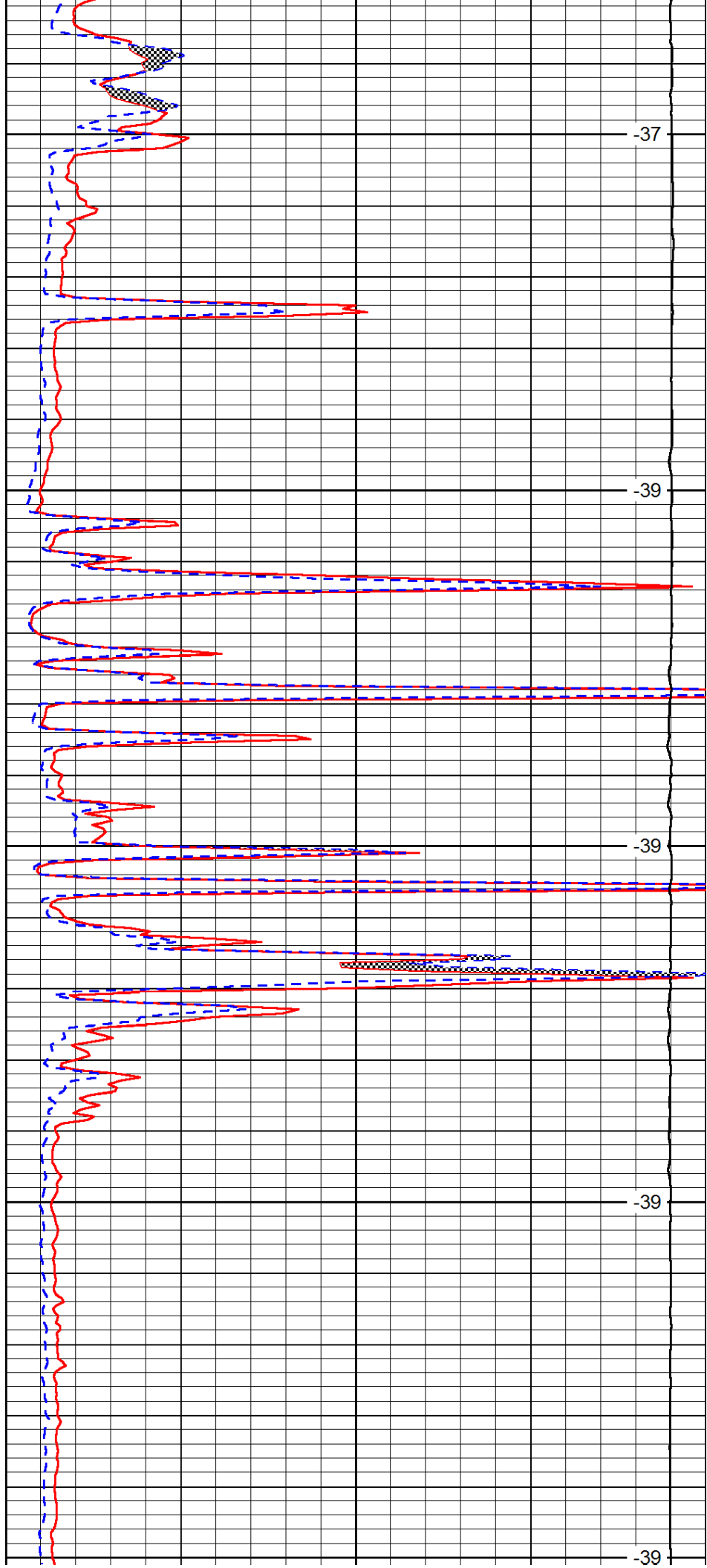
-39

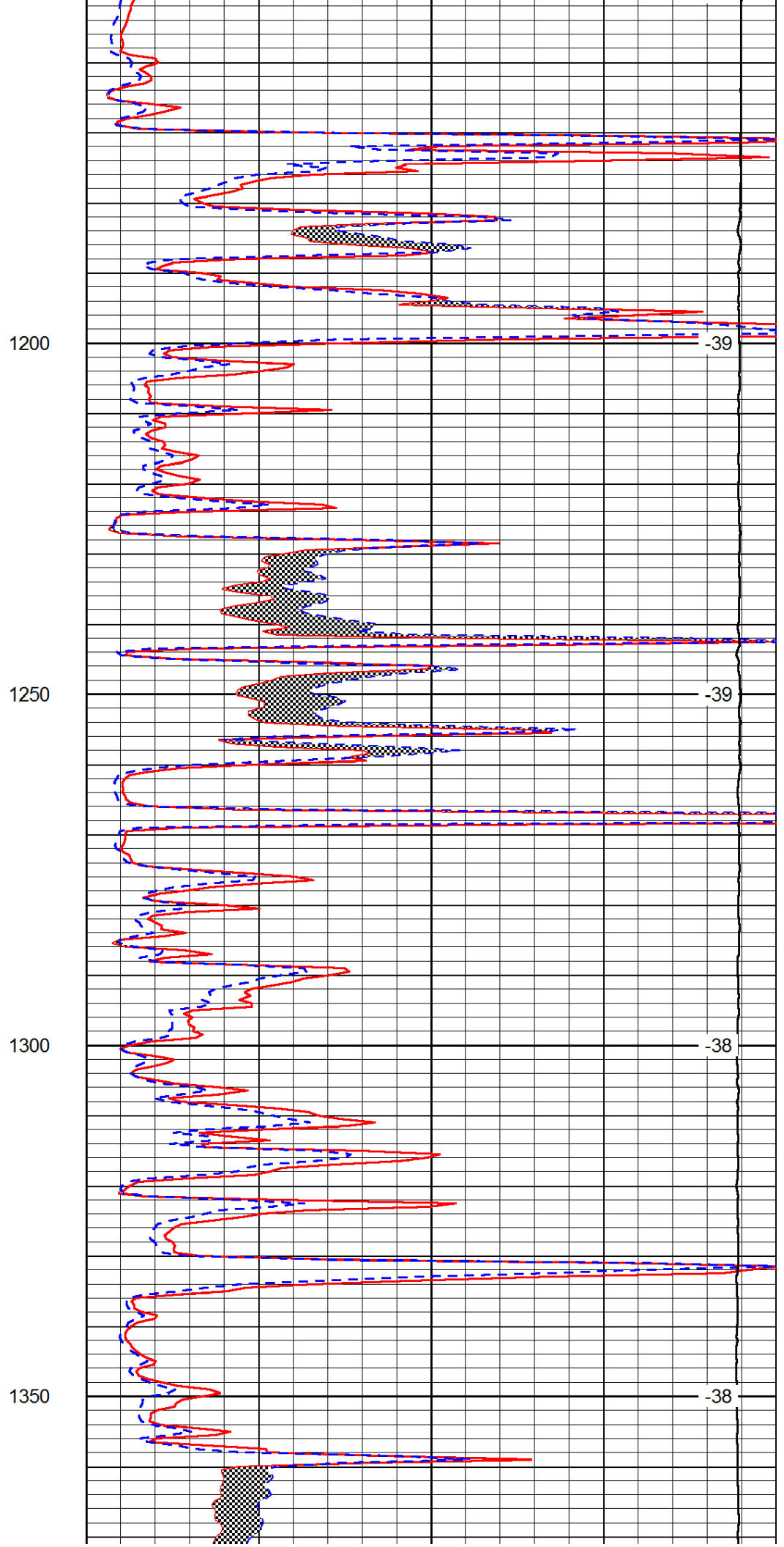
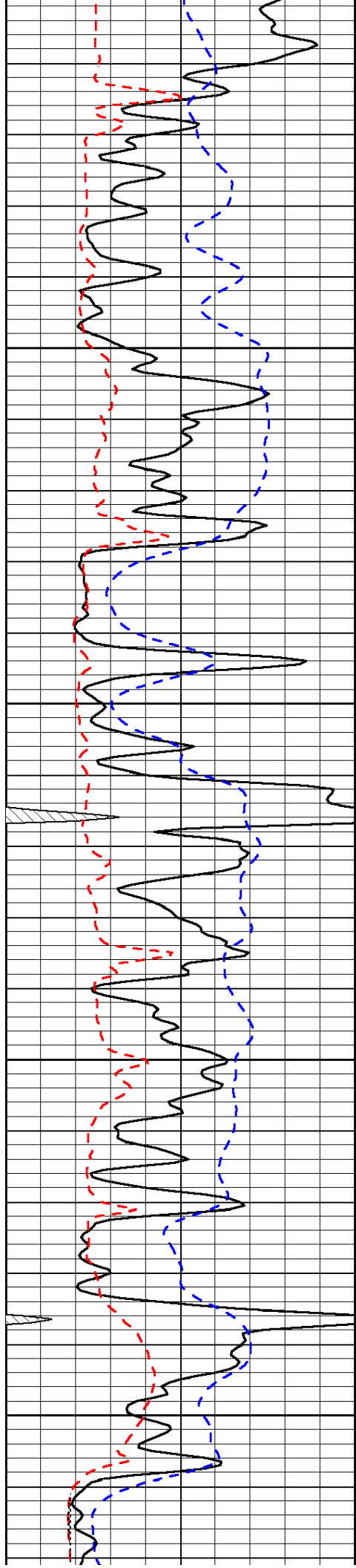
1100

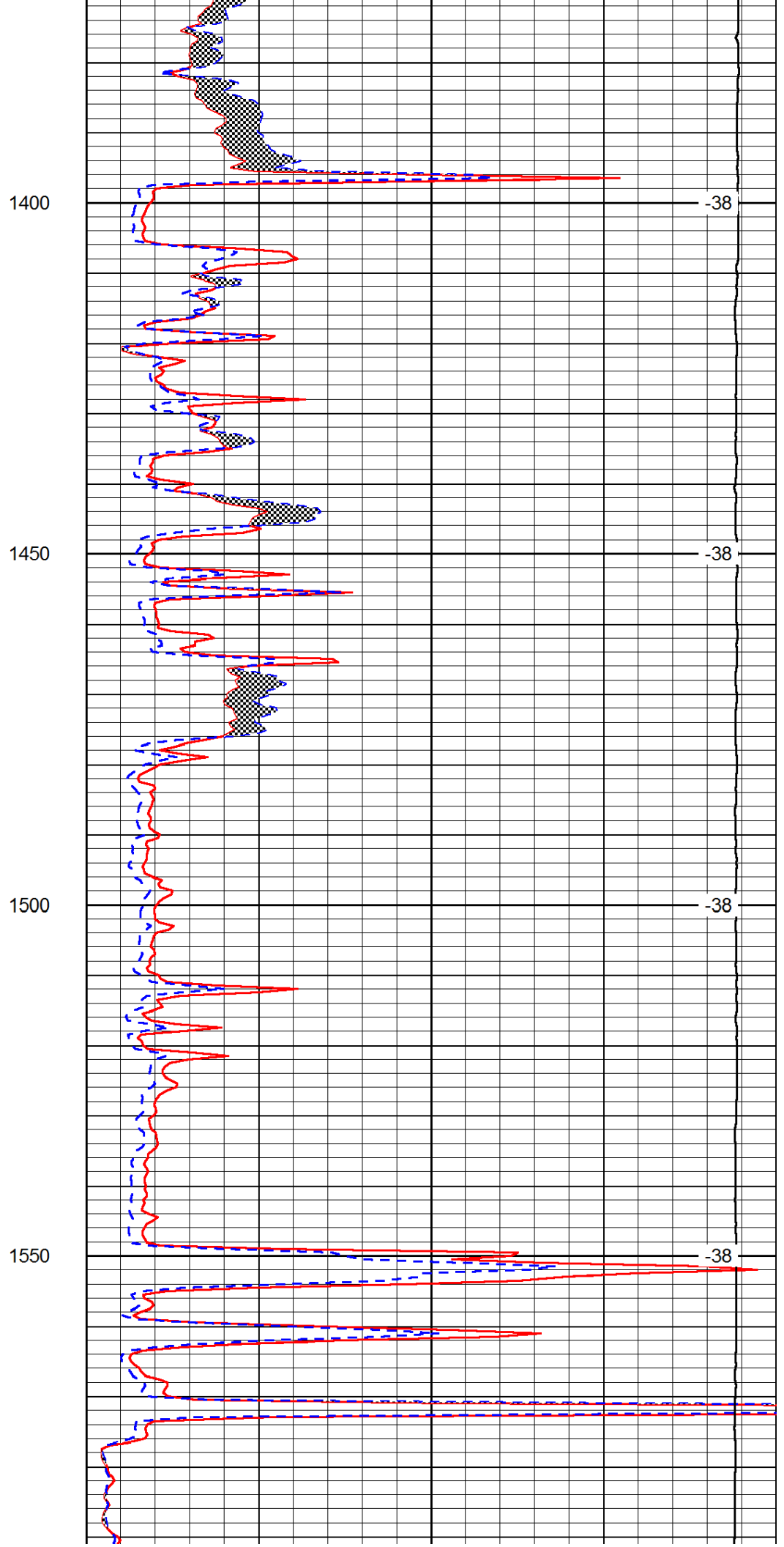
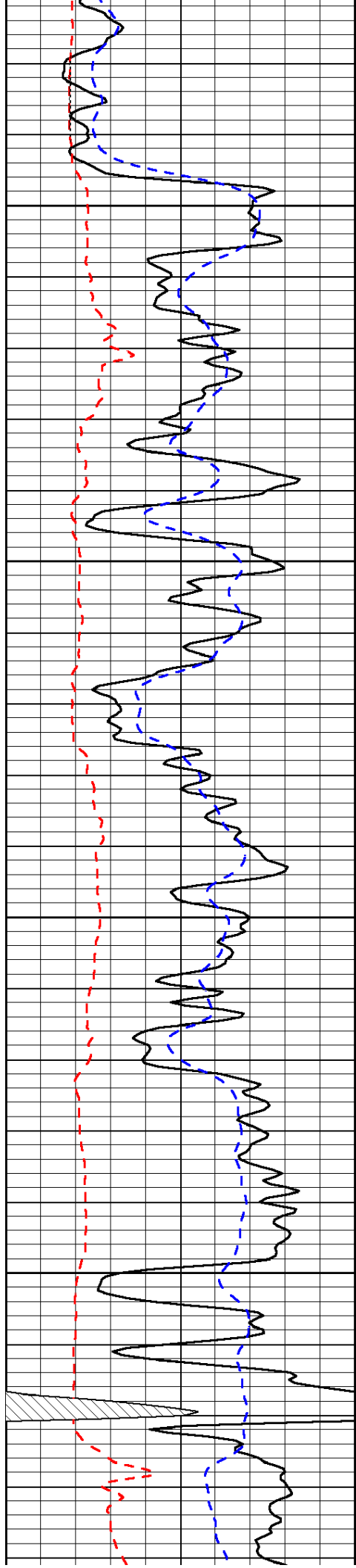
-39

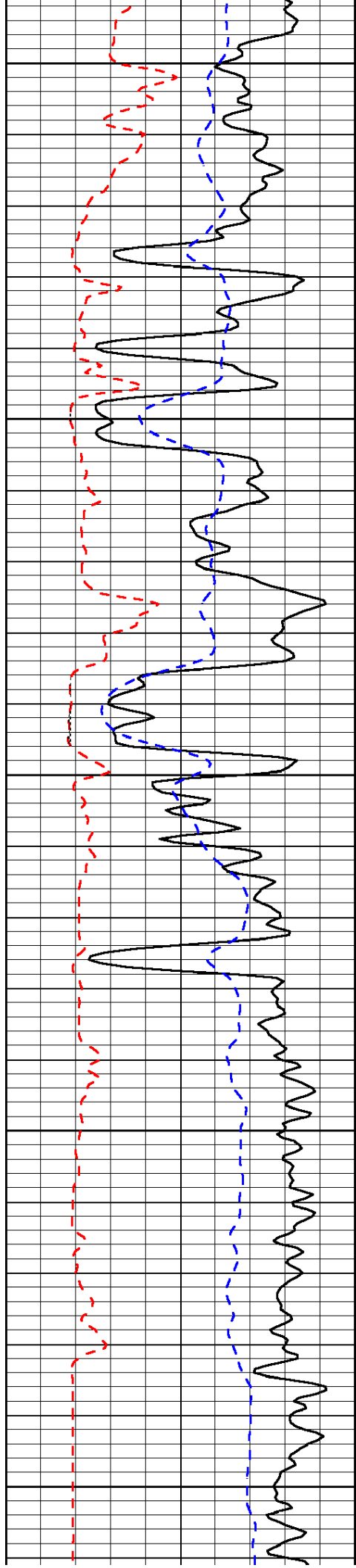
1150

-39









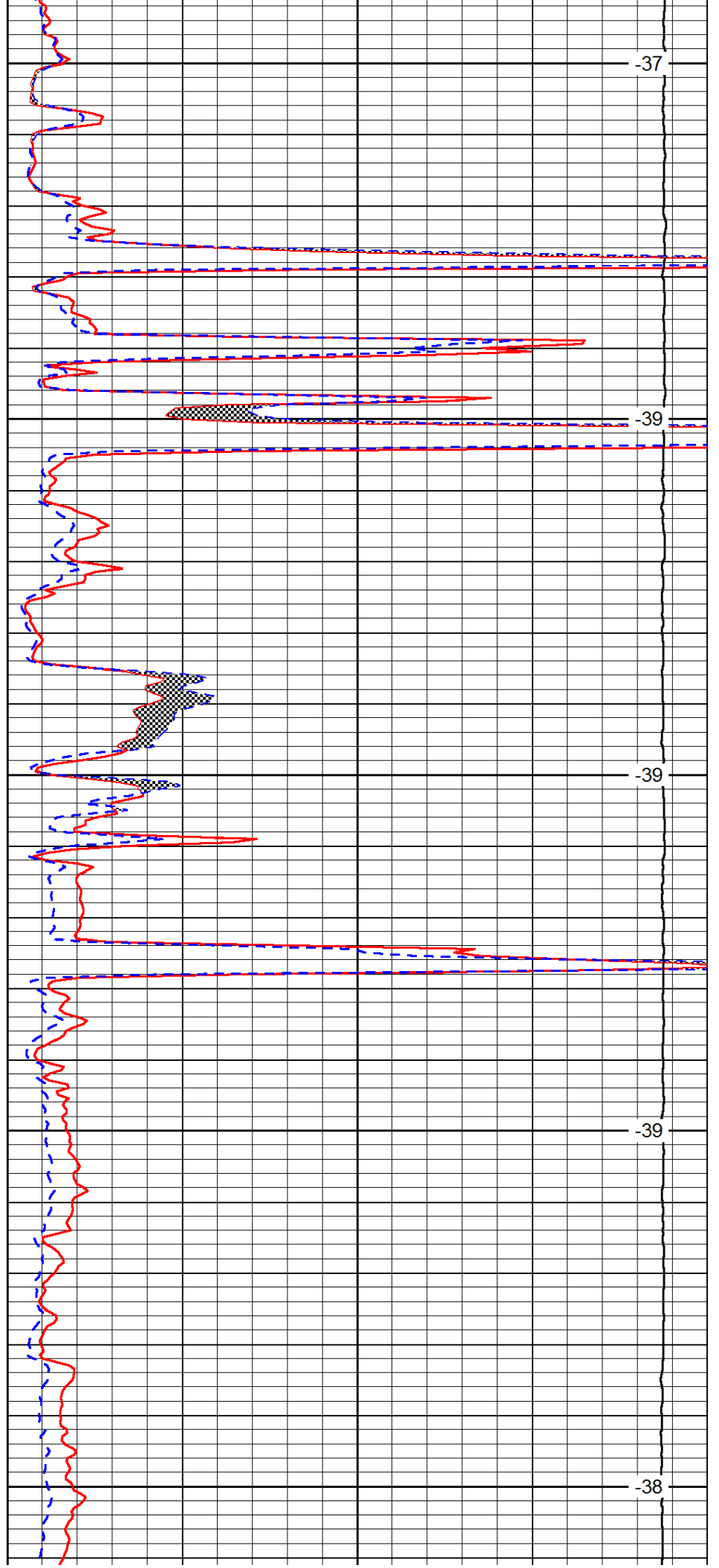
1600

1650

1700

1750

1800



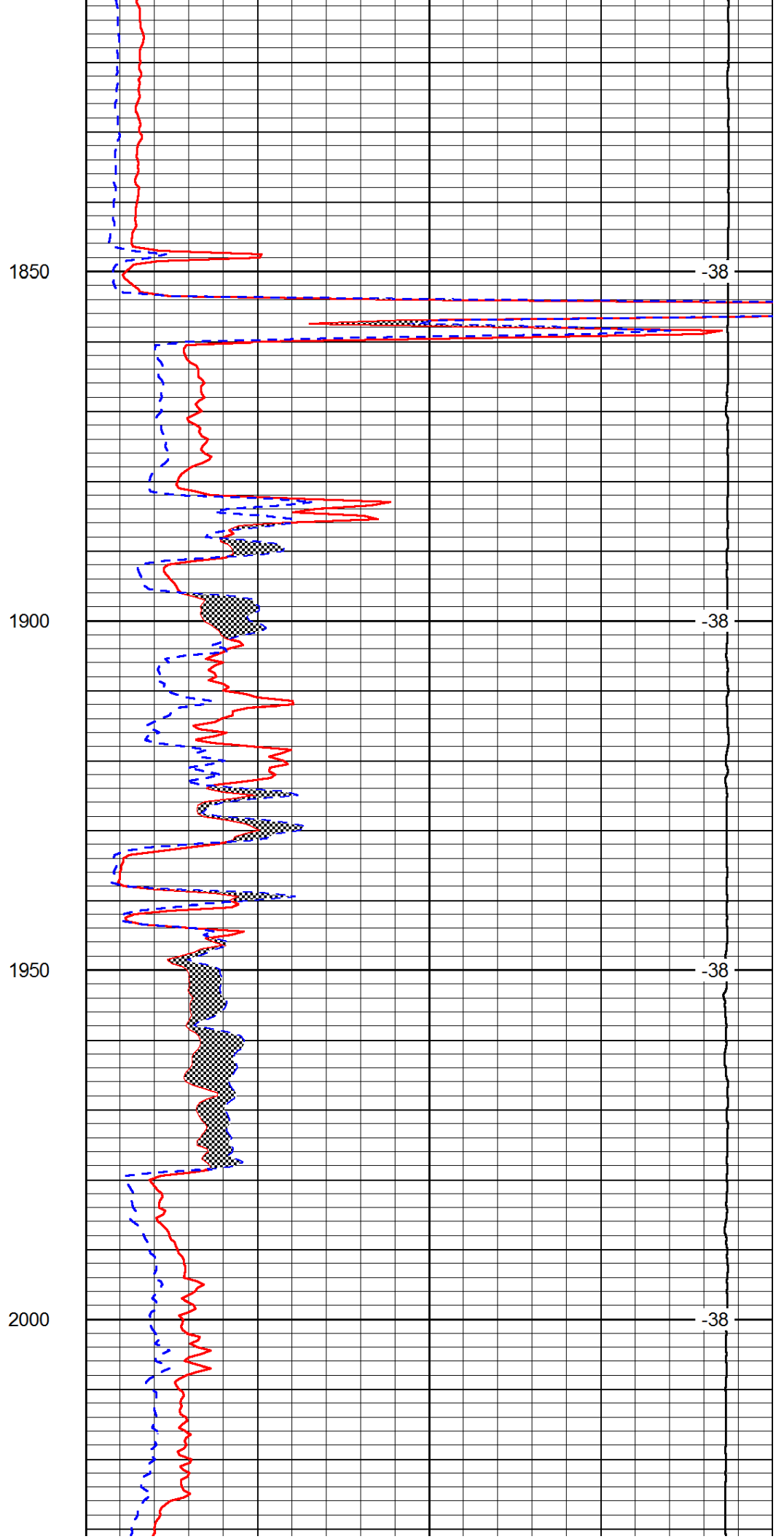
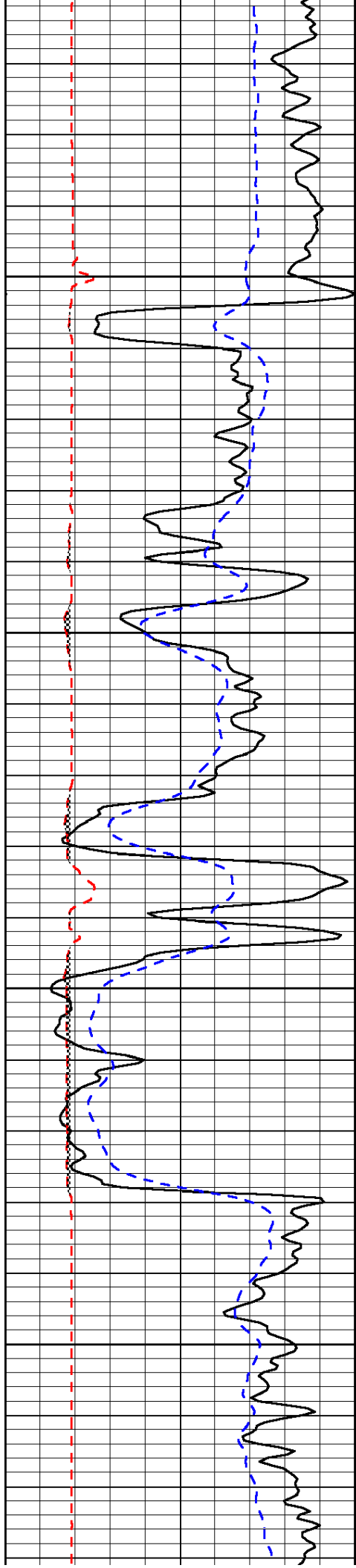
-37

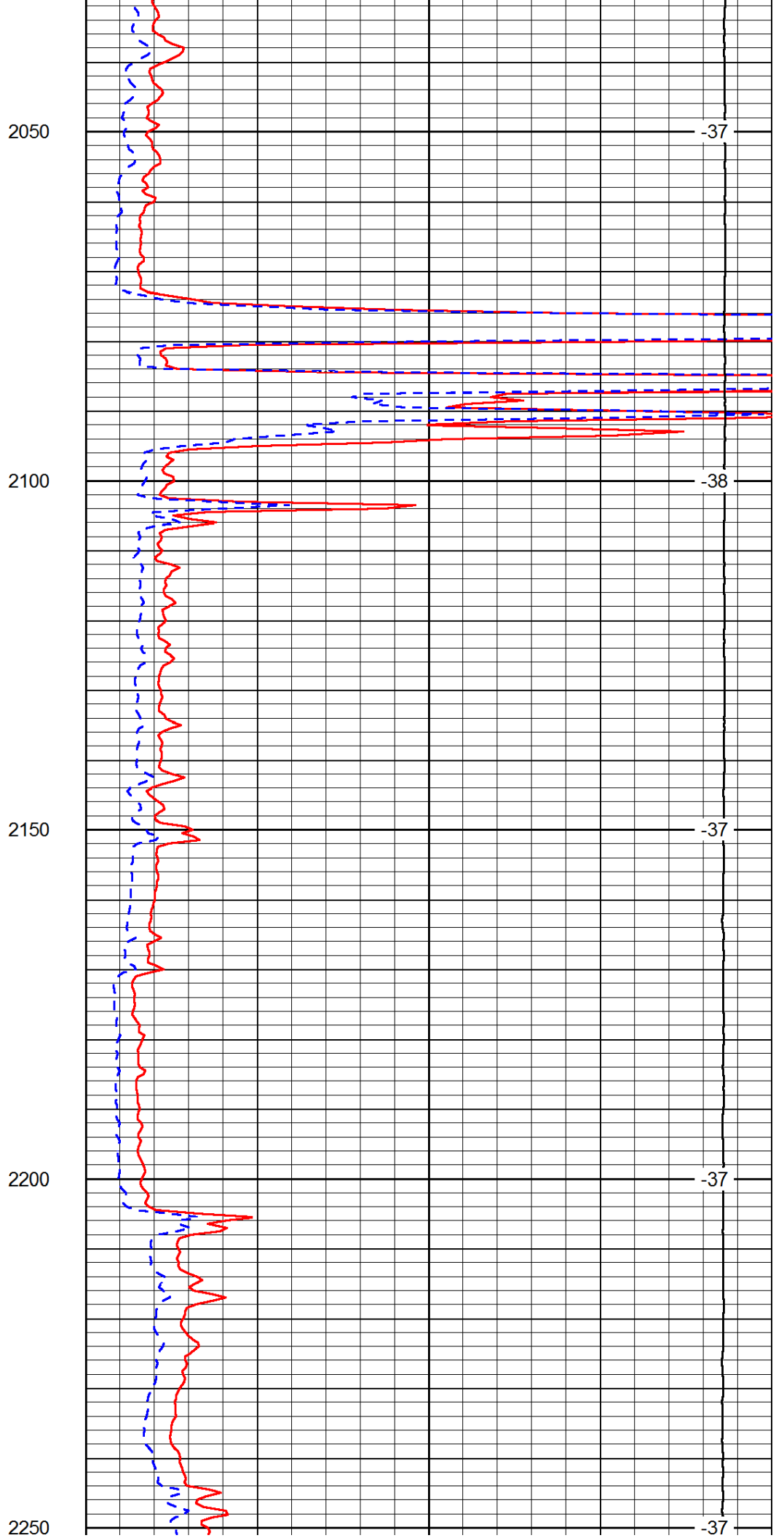
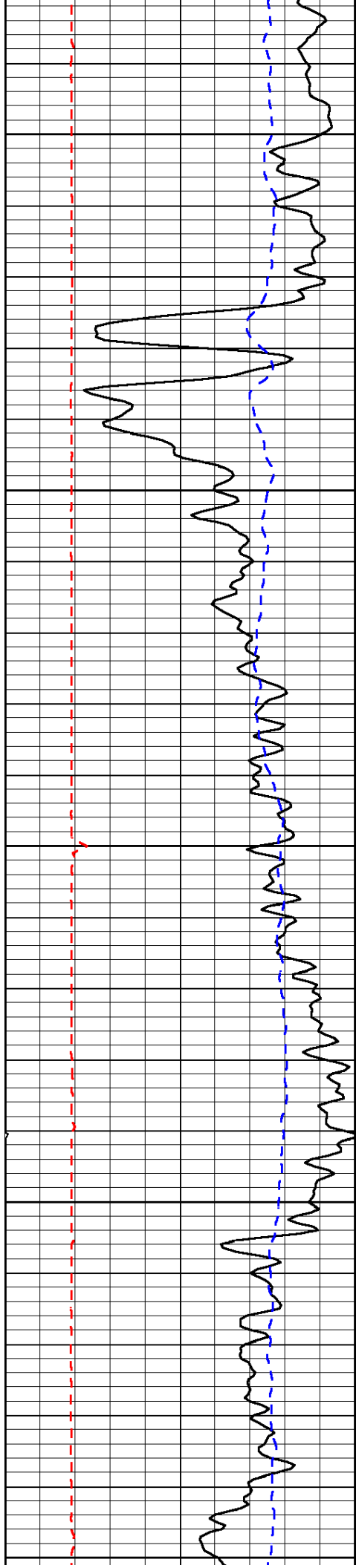
-39

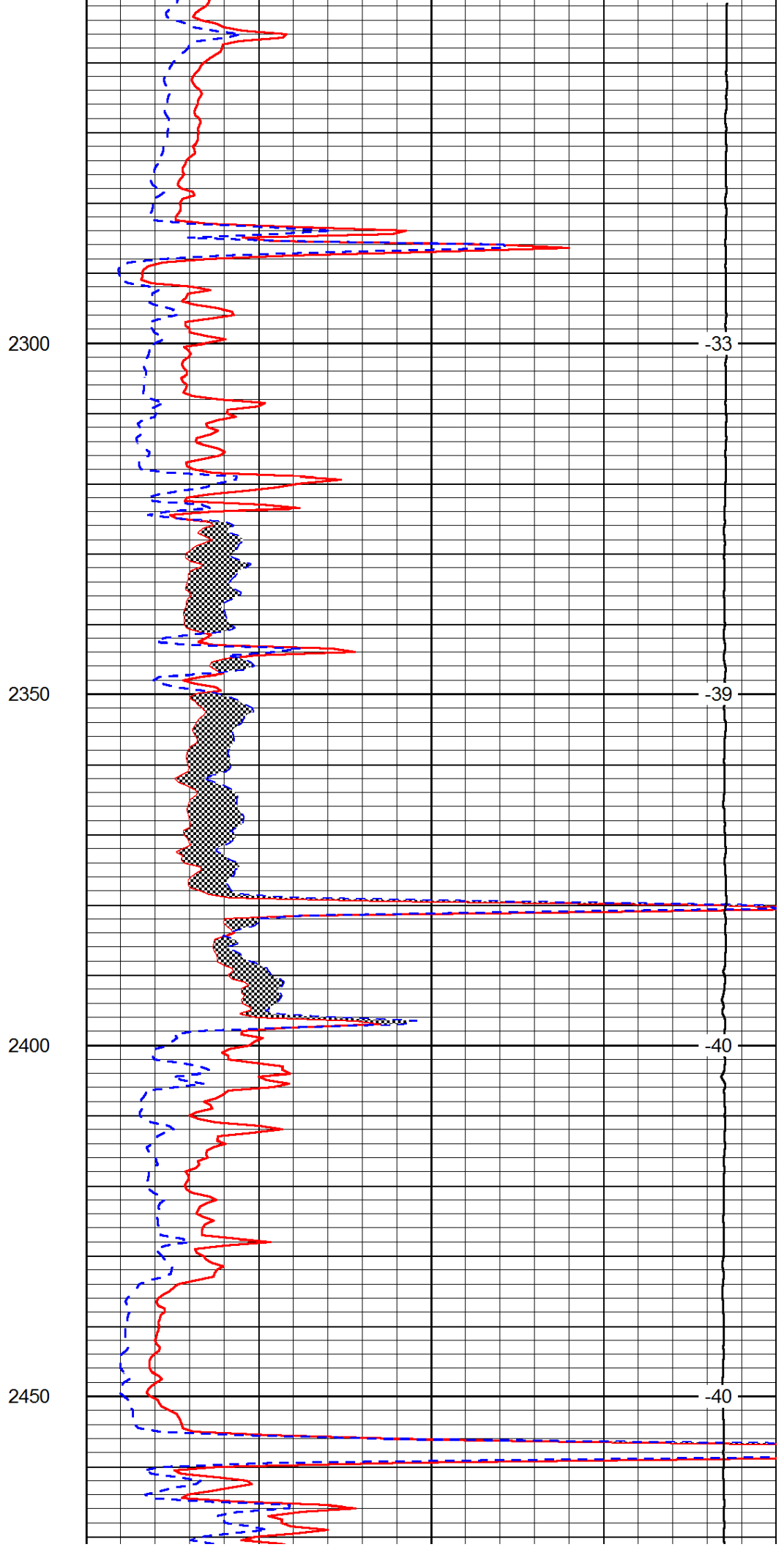
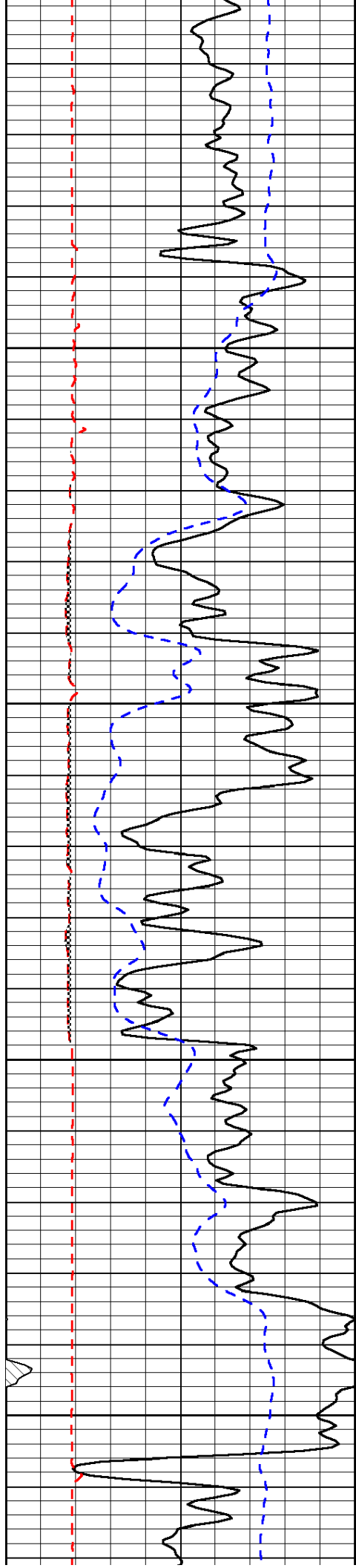
-39

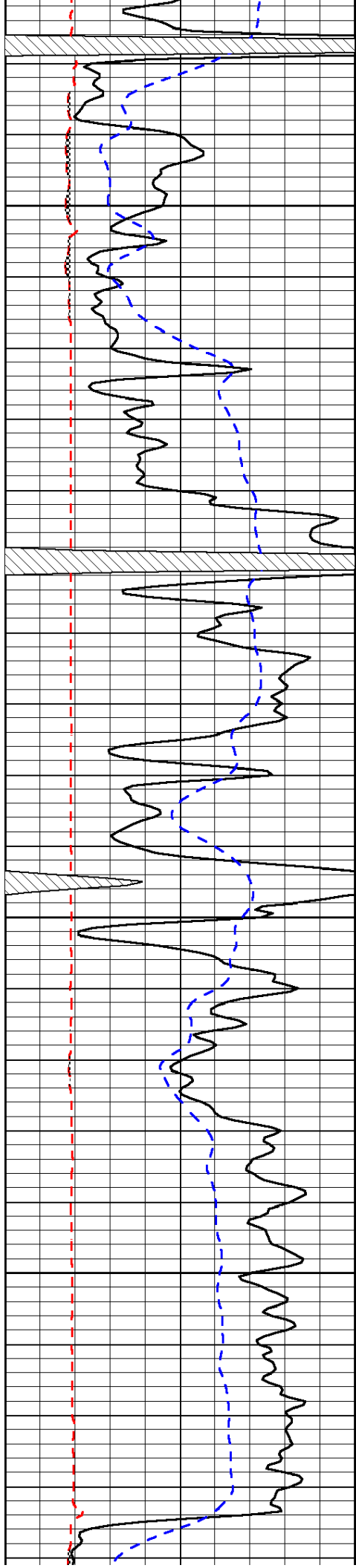
-39

-38







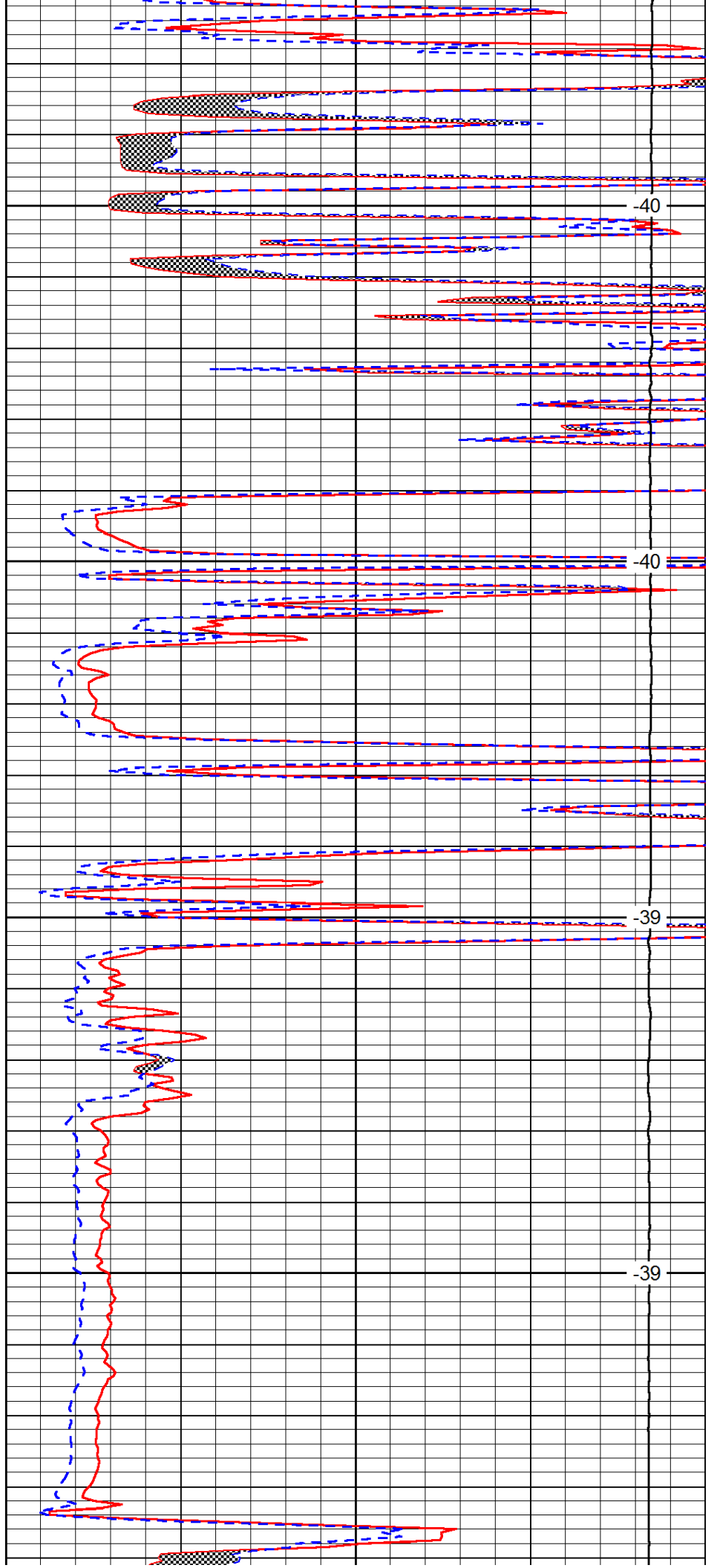


2500

2550

2600

2650

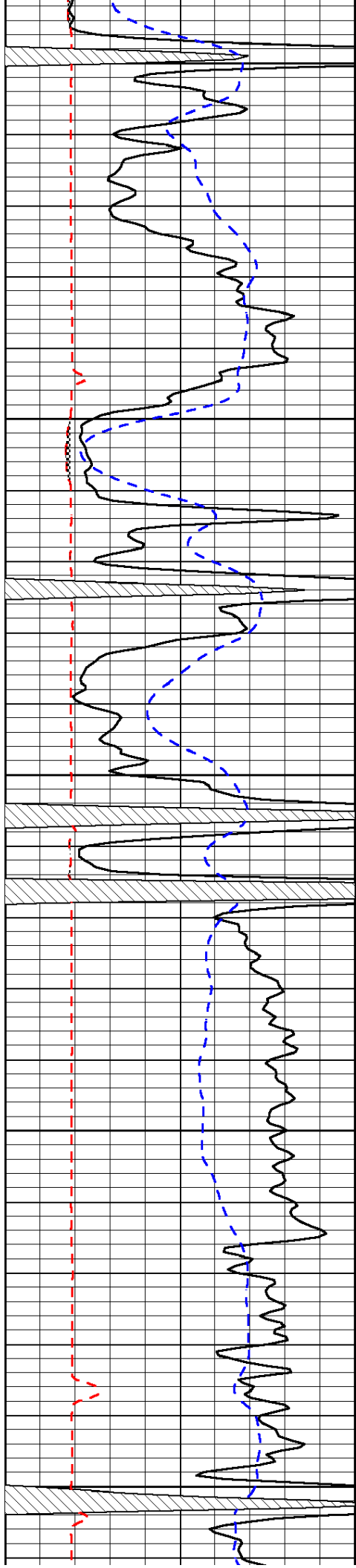


-40

-40

-39

-39



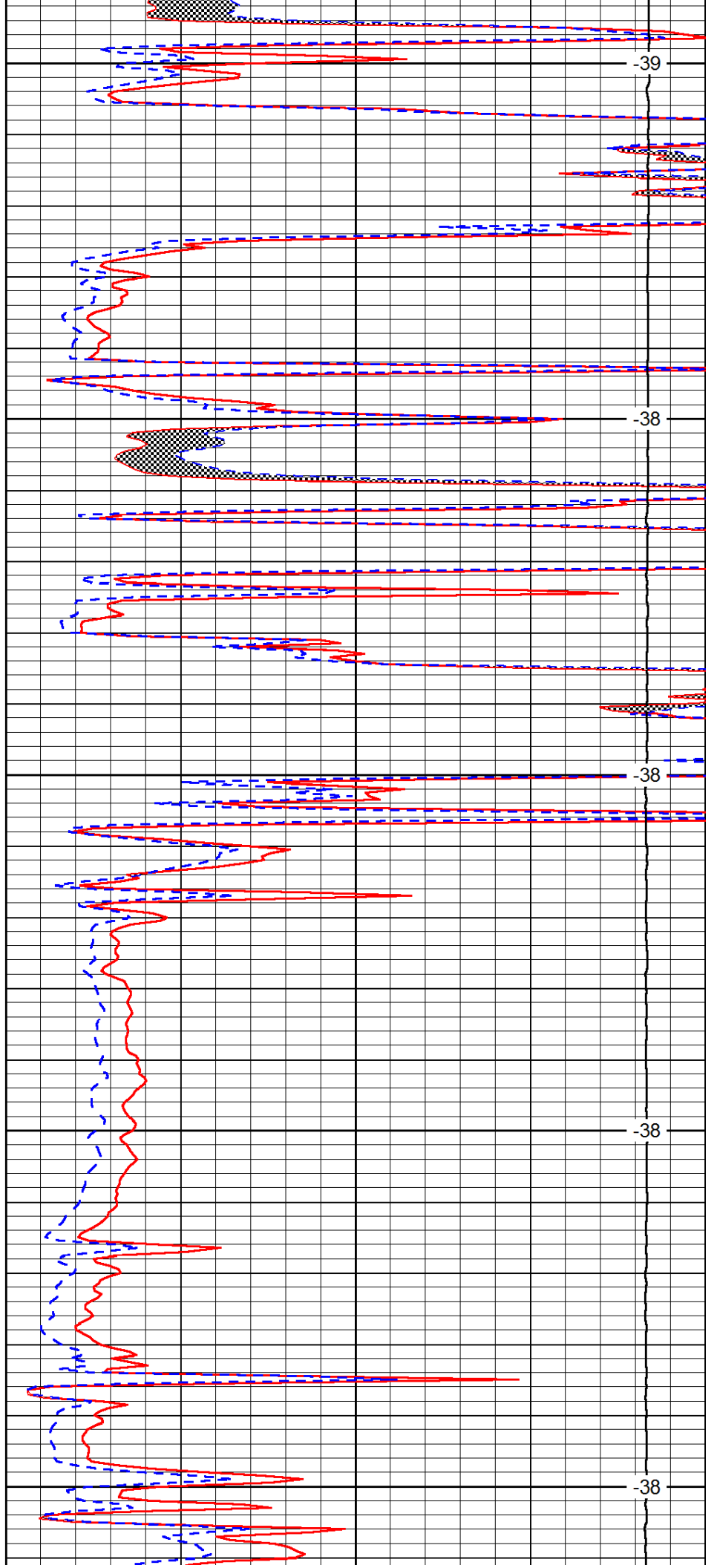
2700

2750

2800

2850

2900



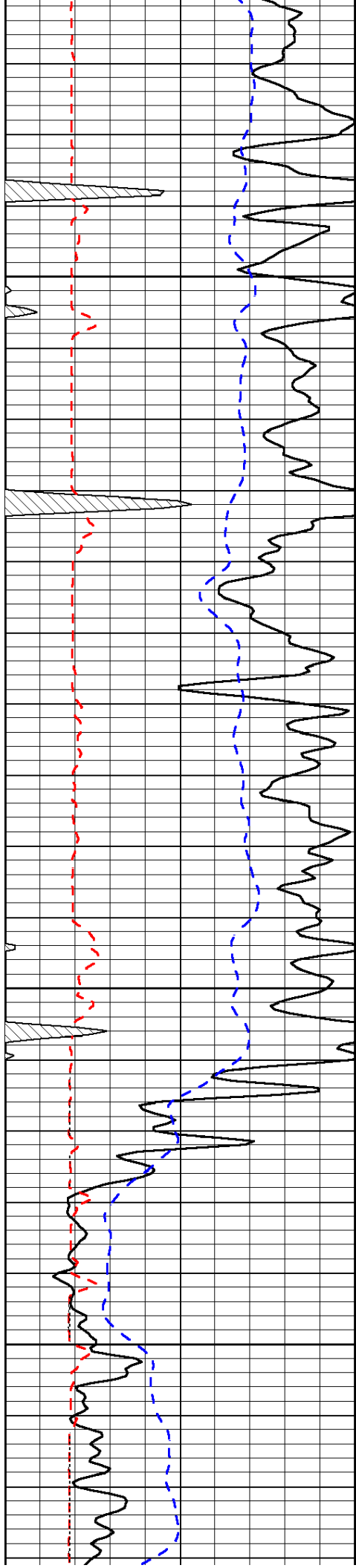
-39

-38

-38

-38

-38

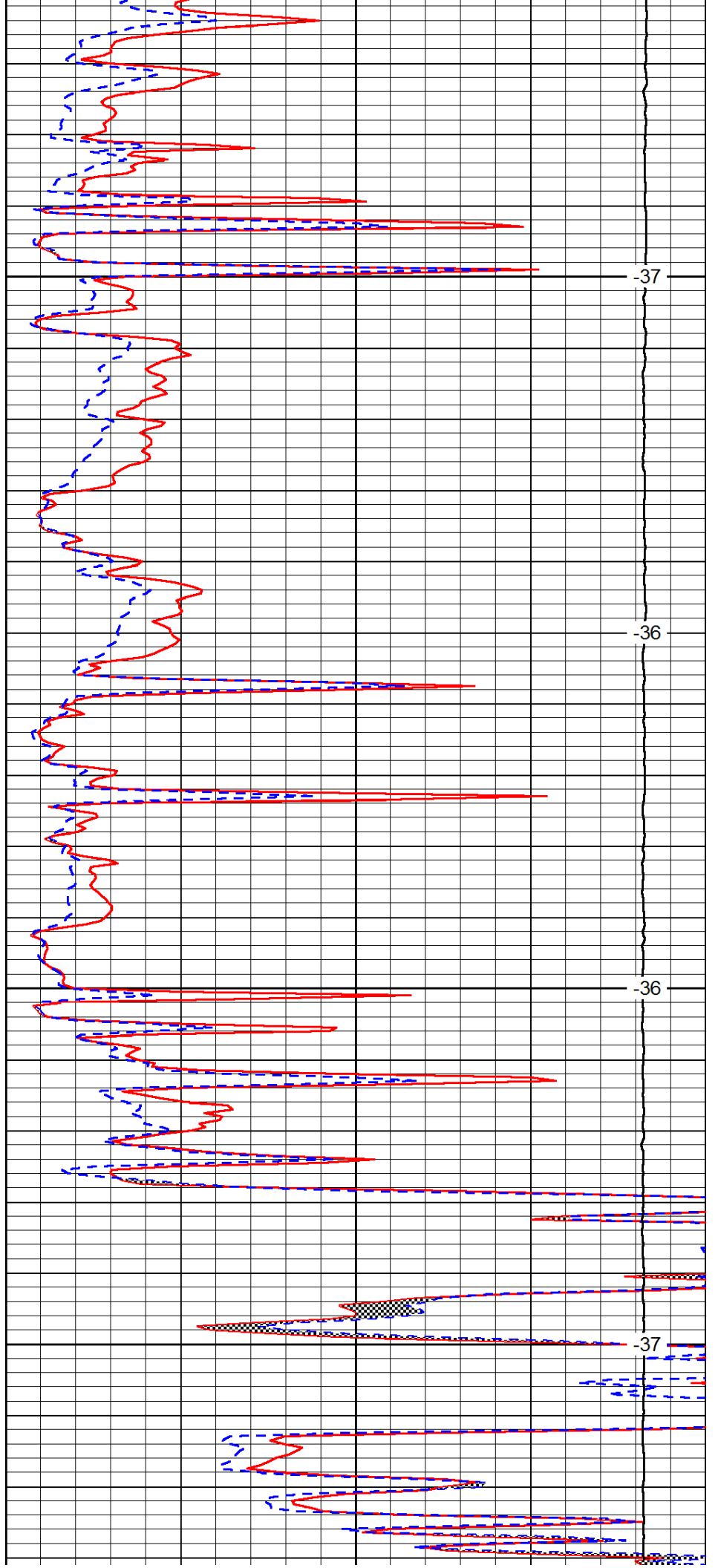


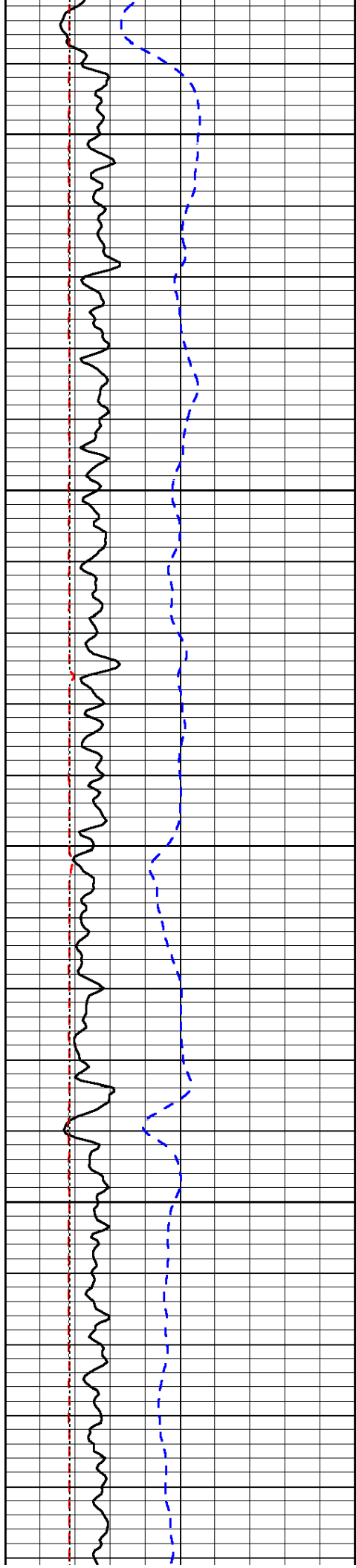
2950

3000

3050

3100





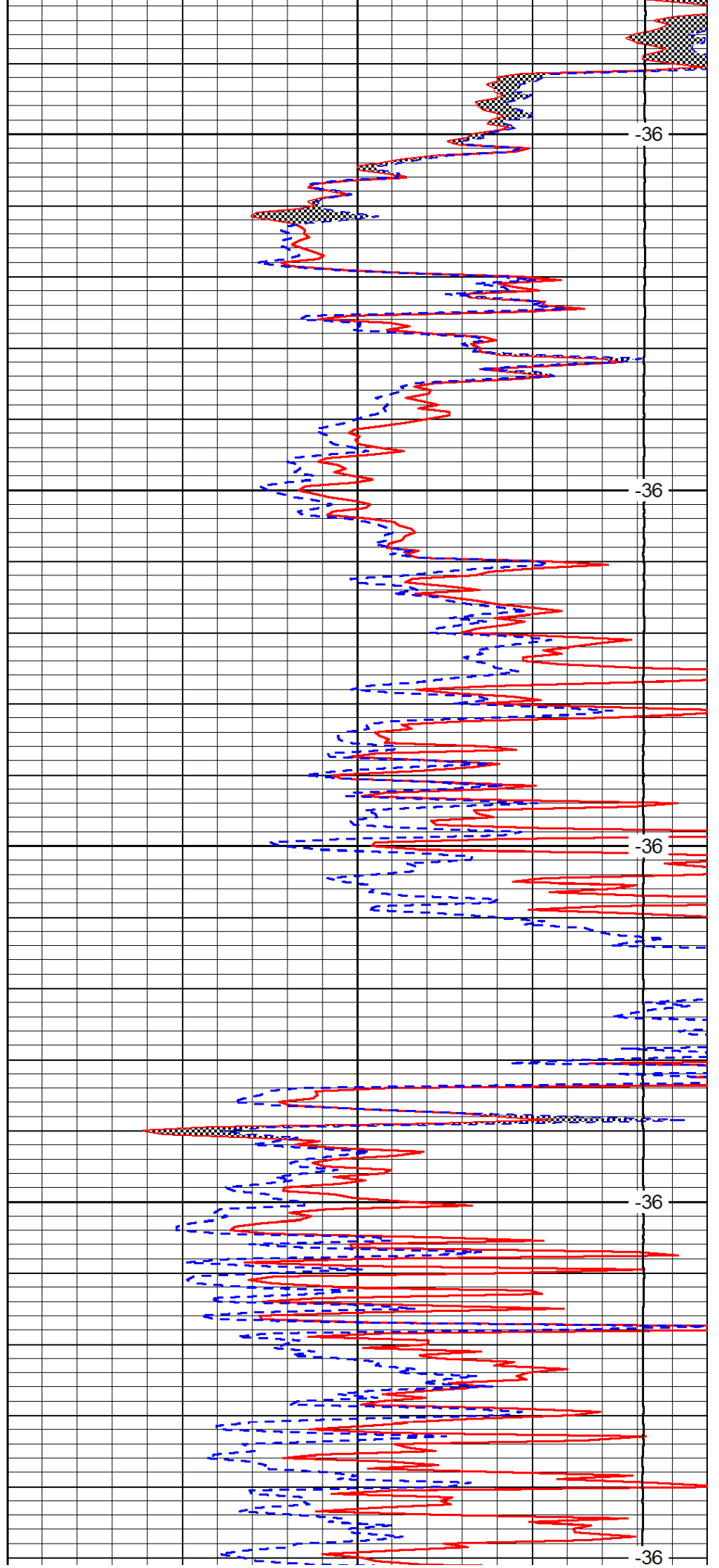
3150

3200

3250

3300

3350



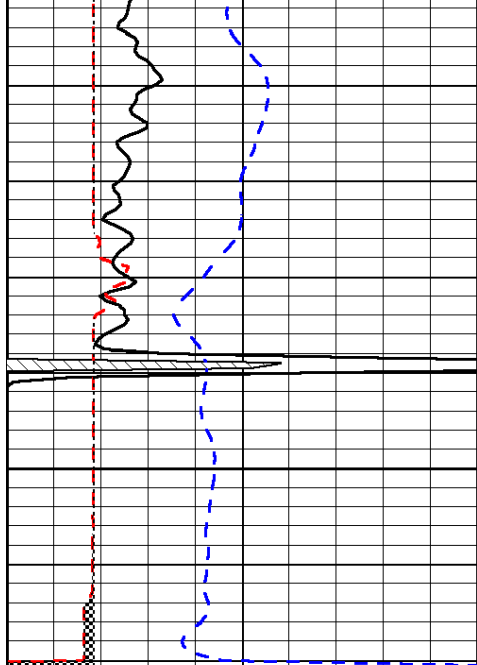
-36

-36

-36

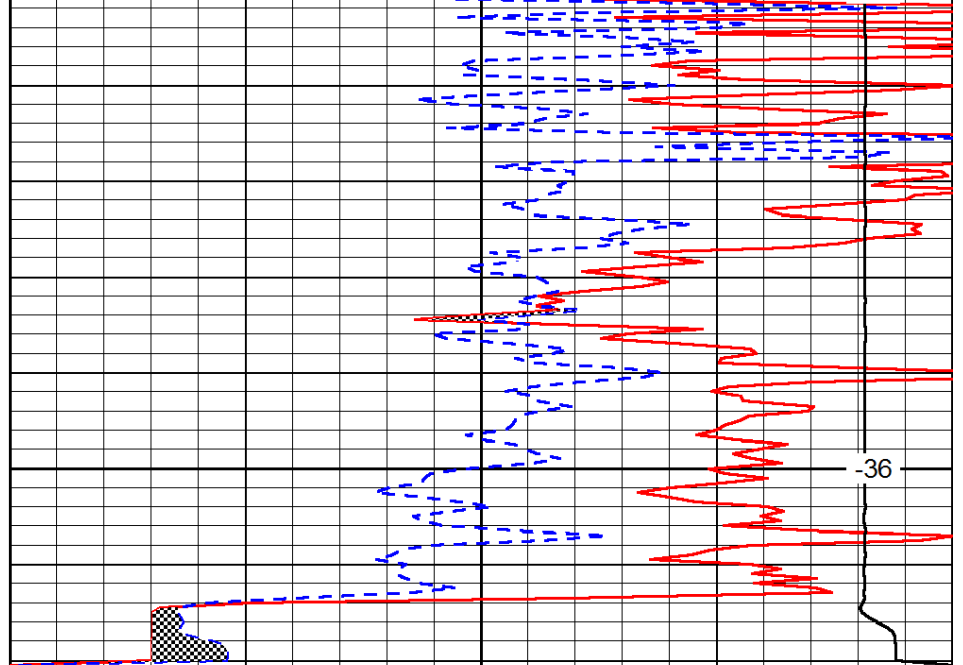
-36

-36



3400

0	Gamma Ray	150
6	Micro Log Caliper (GAPI)	16
-200	SP (mV)	0



-36

0	Micro Inverse 1 X 1	40
0	Micro Normal 2"	40
15000	Line Weight	0

LSPD