



Pioneer Energy Services

Dual Compensated Porosity Log

15-035-24565-00-00

API No.

Company **Phillips Oil Properties, Inc.**
 Well **Kerr #6-1**
 Field **Wilson**
 County **Cowley** State **Kansas**

Location

590' FNL & 730' FEL

Sec: 6

Twp: 33S

Rge: 6E

Other Services
 DIL
 MEL

Permanent Datum Ground Level Elevation 1301
 Log Measured From Kelly Bushing 9 Ft. Above Perm. Datum
 Drilling Measured From Kelly Bushing

Date 7/22/2014

Elevation

K.B. 1310
 D.F. 1310
 G.L. 1301

Run Number One

Type Log CNL / CDL

Depth Driller 3415

Depth Logger 3415

Bottom Logged Interval 3394

Top Logged Interval 300

Type Fluid In Hole Chemical

Salinity, PPM CL 750

Density 9.3

Level Full

Max. Rec. Temp. F 110

Operating Rig Time 4 Hours

Equipment -- Location 91 Hays

Recorded By D. Schmidt

Witnessed By Troy Phillips

Borehole Record

Casing Record

Run No.	Bit	From	To	Size	Wgt.	From	To
1	12.25	00	329	8.625	24#	00	329
2	7.875	329	3415				

<<< Fold Here >>>

All interpretations are opinions based on inferences from electrical or other measurements and we cannot and do not guarantee the accuracy or correctness of any interpretation, and we shall not, except in the case of gross or willful negligence on our part, be liable or responsible for any loss, costs, damages, or expenses incurred or sustained by anyone resulting from any interpretation made by any of our officers, agents or employees. These interpretations are also subject to our general terms and conditions set out in our current Price Schedule.

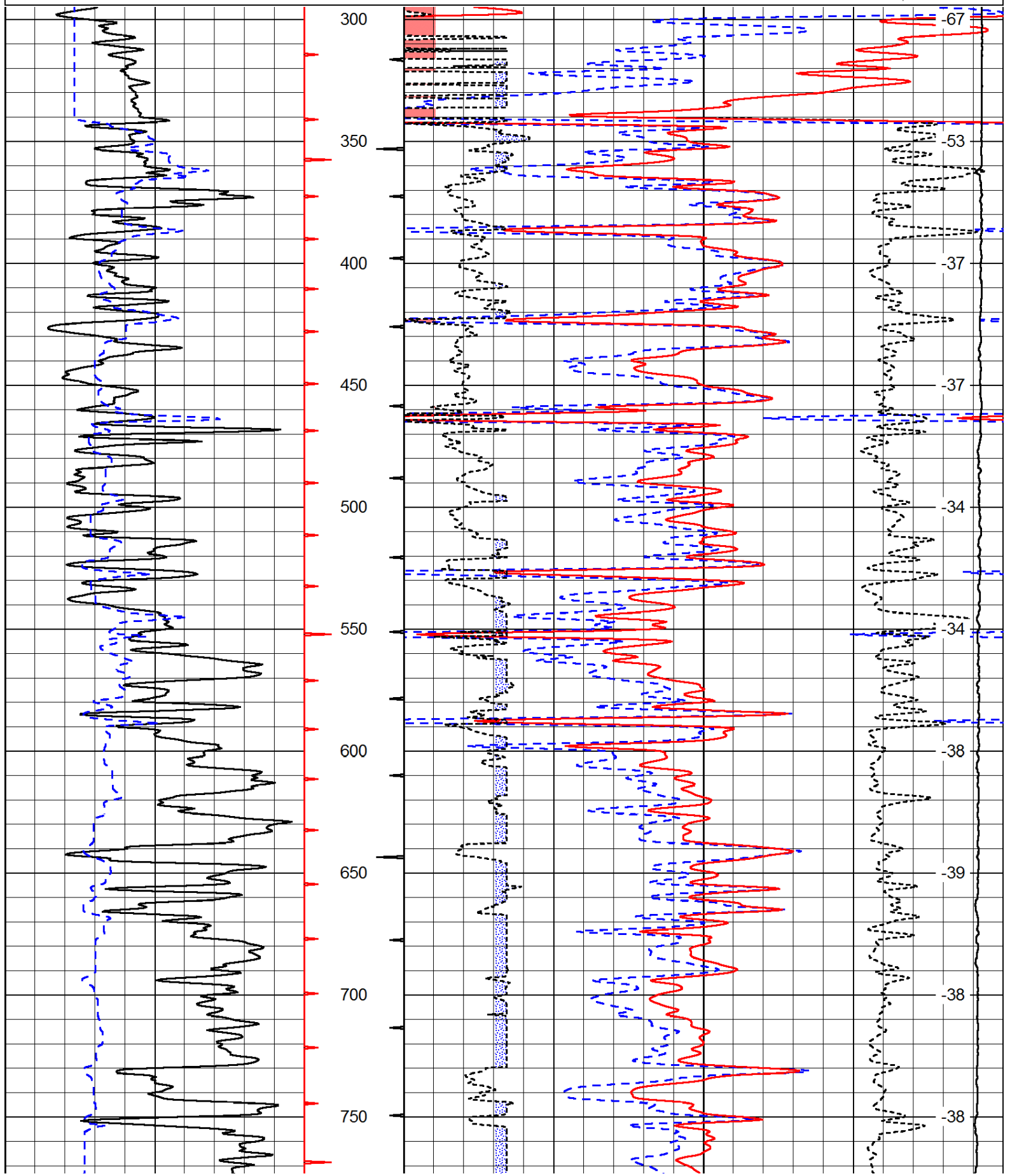
Comments

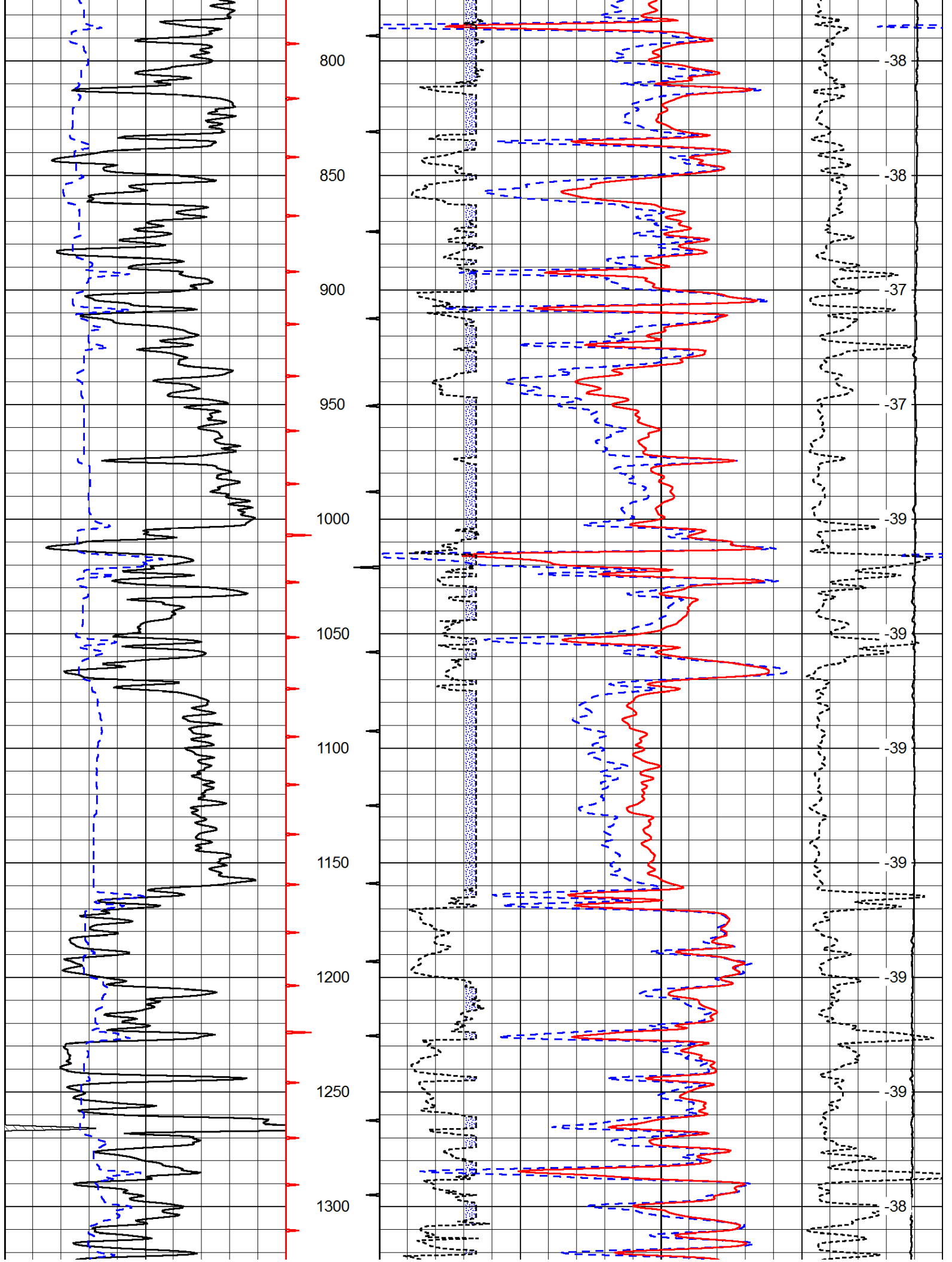
Thank you for using Pioneer Energy Services
 www.pioneer.com
 785 625 3858
 Winfield,
 East to 201 Rd, 1 South,
 1 West, 1 South, 1/8 West,
 South into

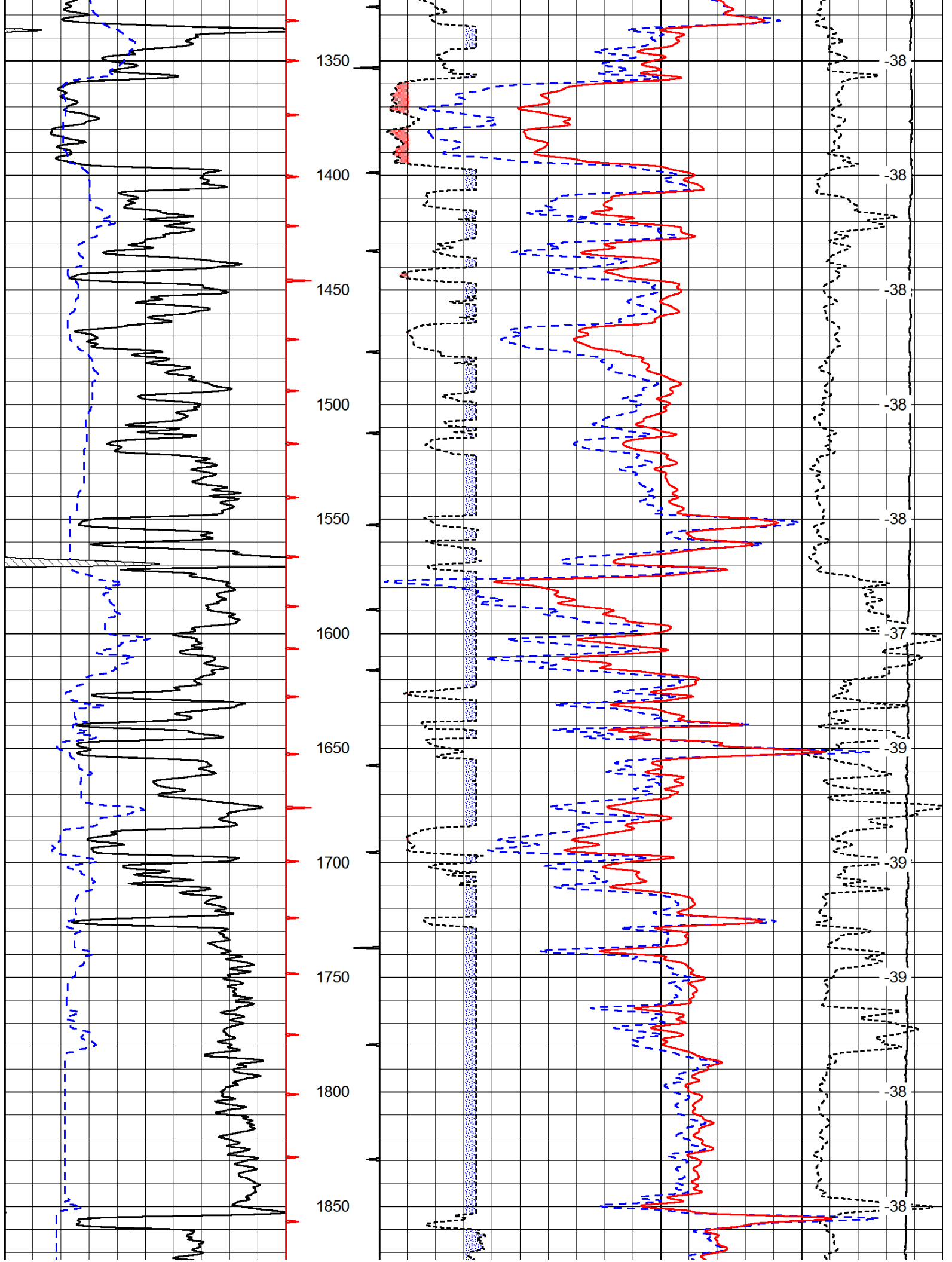
Database File: c:\warrior\data\phillips oil prop_kerr #6-1\phillips_kerr_6-1hd.db
 Dataset Pathname: dil/phstack
 Presentation Format: cdl
 Dataset Creation: Tue Jul 22 18:00:04 2014
 Charted by: Depth in Feet scaled 1:600

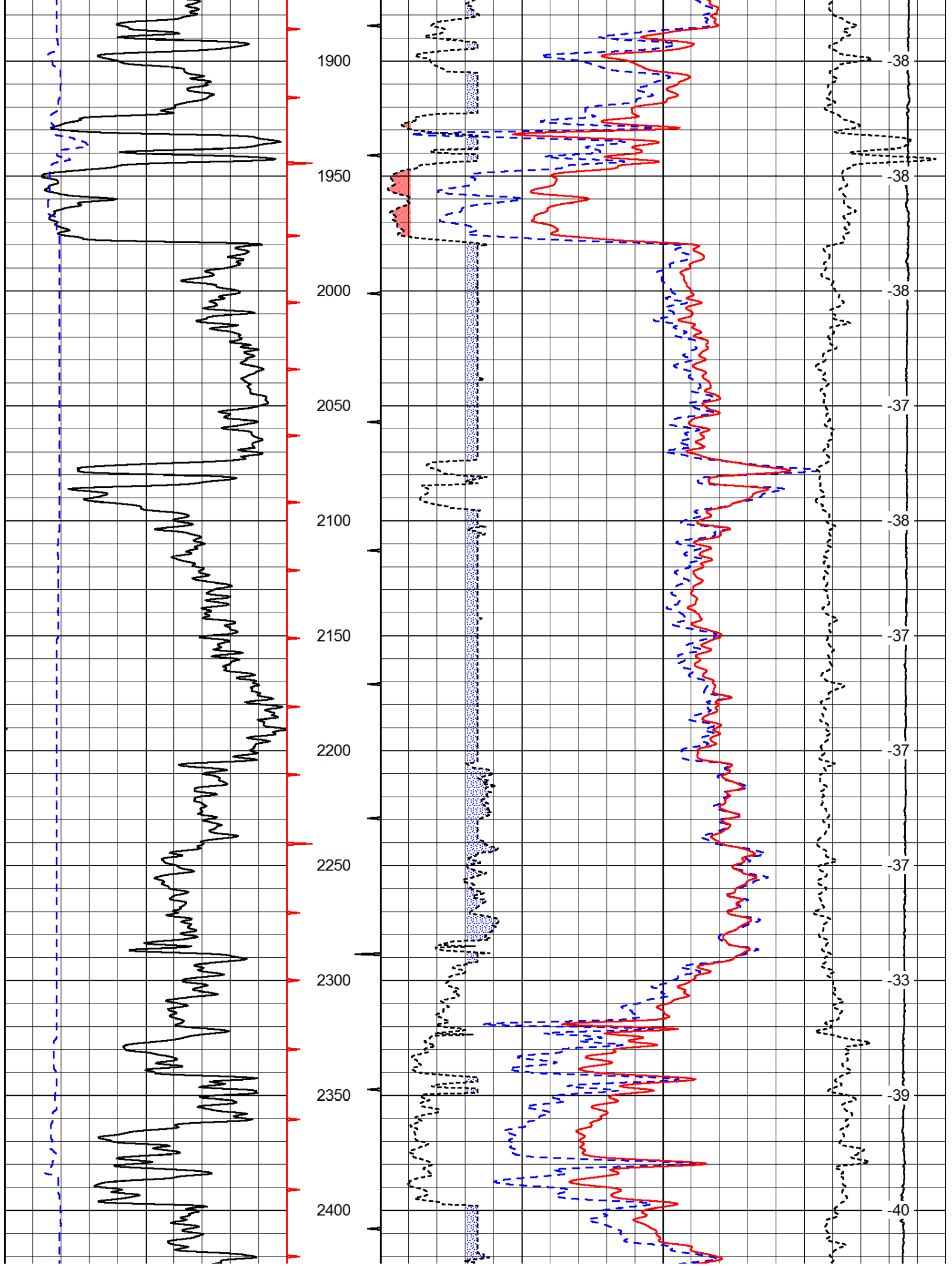
0	Gamma Ray	150
6	Caliper (GAPI)	16

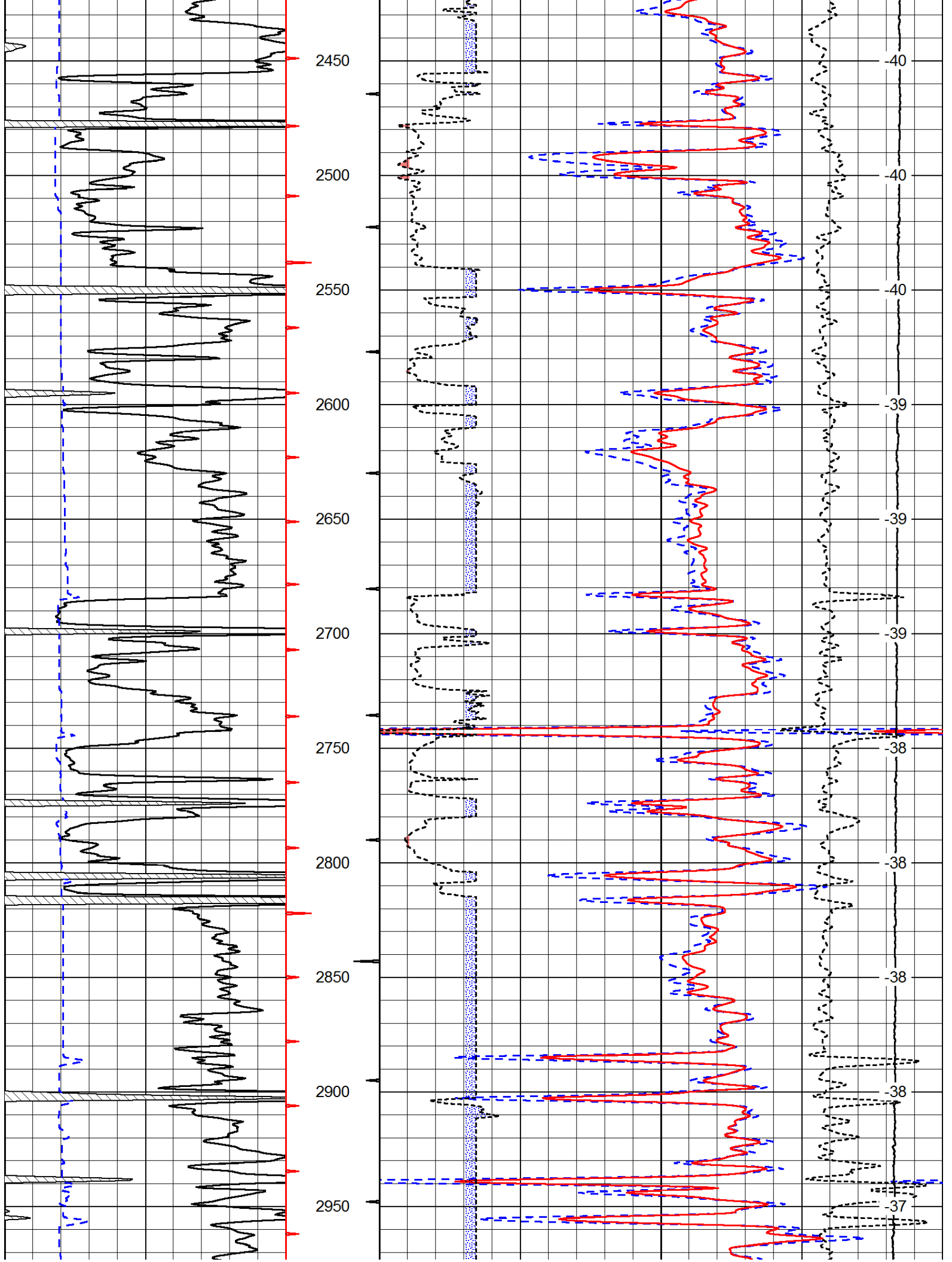
30	Compensated Density		-10
2	Bulk Density		3
15000	Line Tension		0
2.625	DGA	3.425	-0.25
			Correction
			0.25
LSPD			

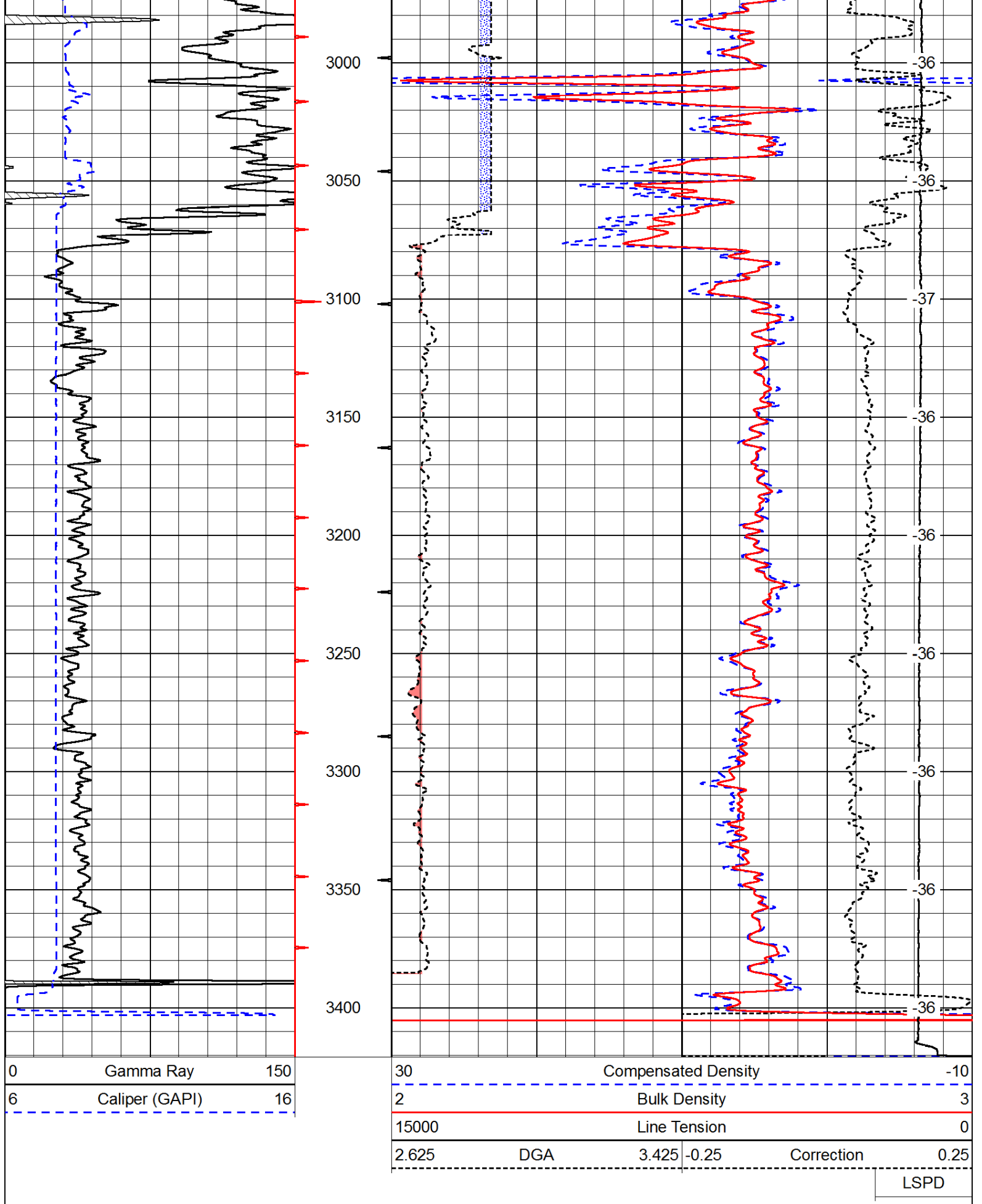










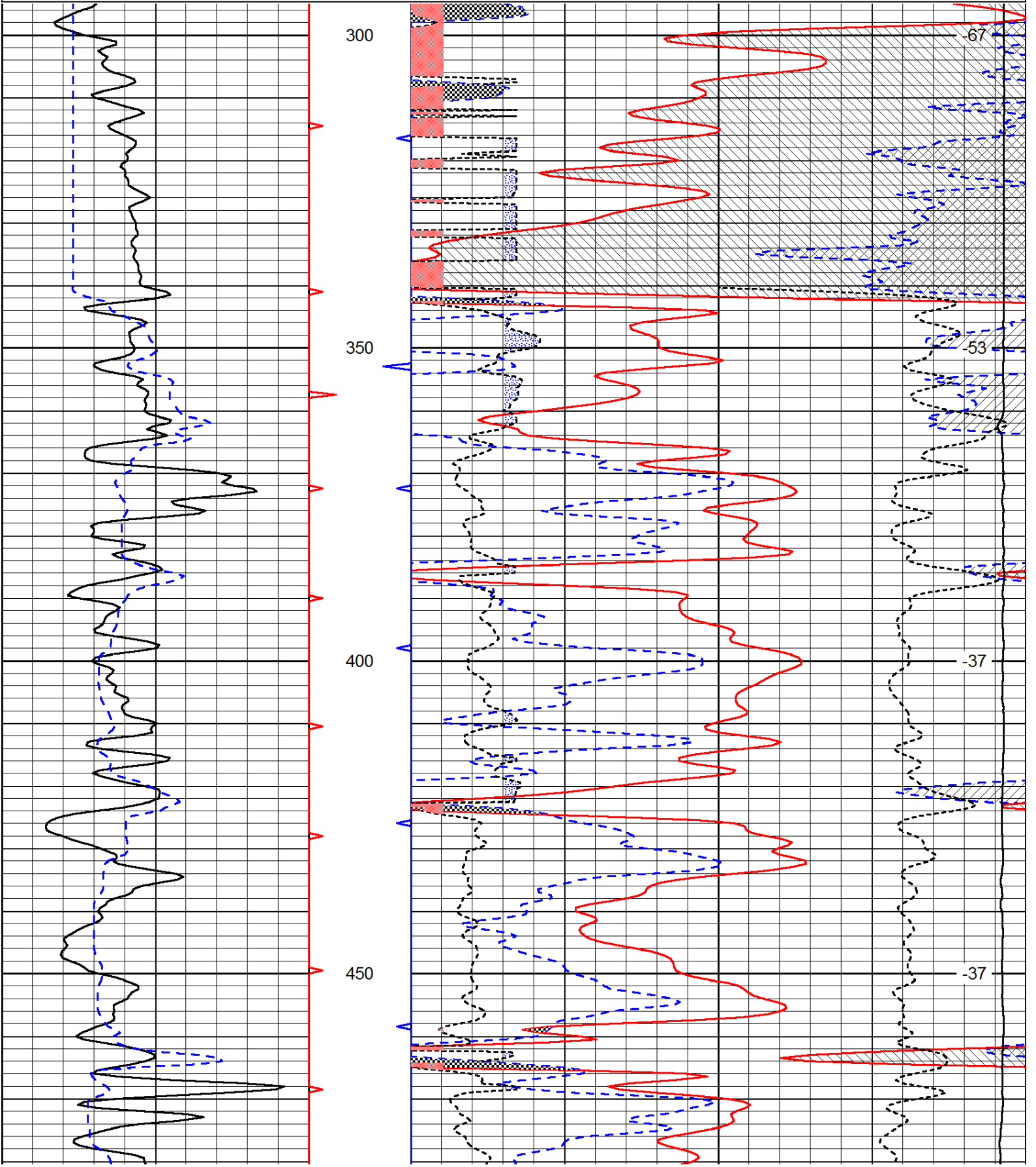


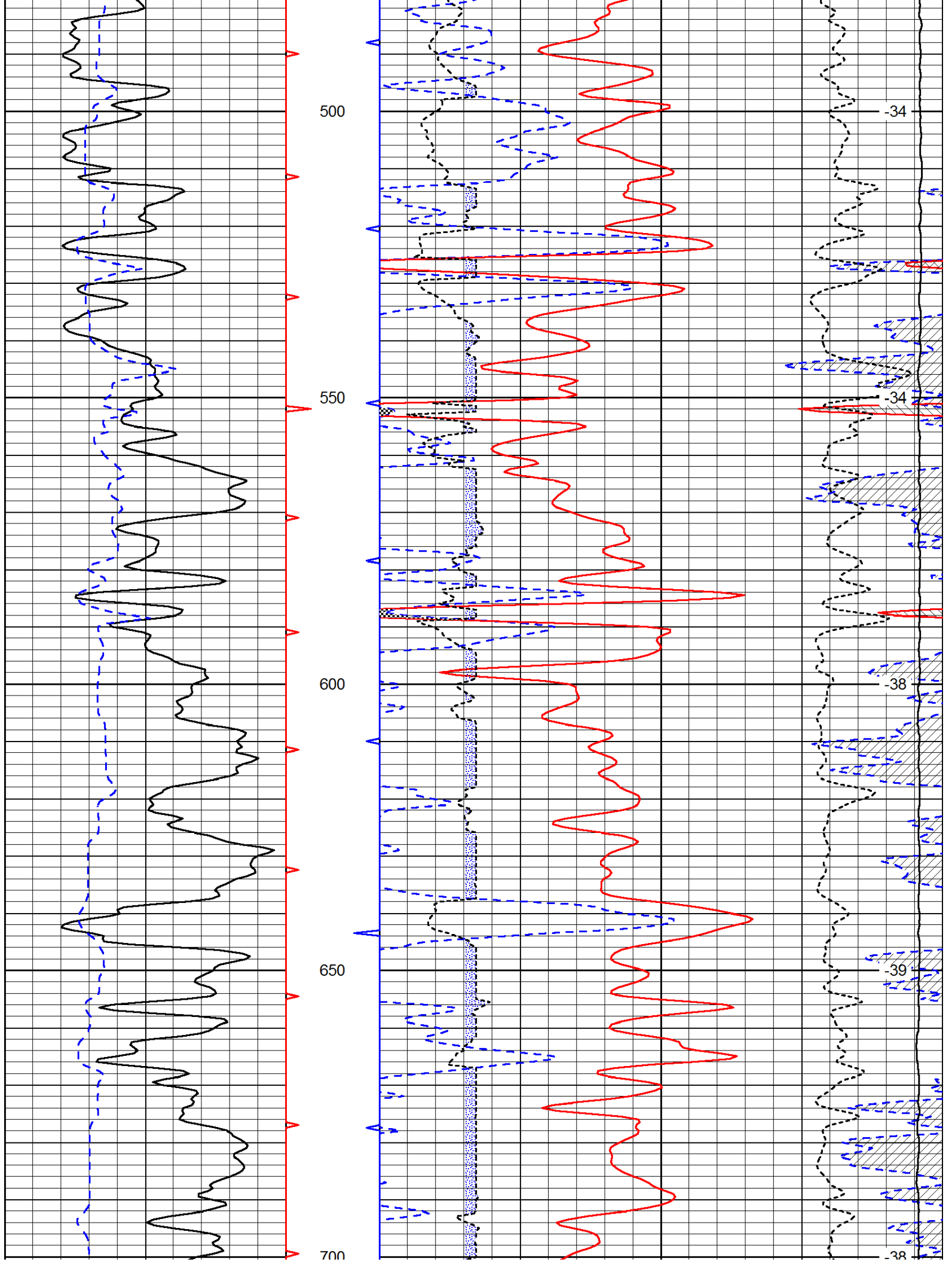
Database File: c:\warrior\data\phillips oil prop_kerr #6-1\phillips_kerr_6-1hd.db
 Dataset Pathname: dil/phstack
 Presentation Format: cndlspec

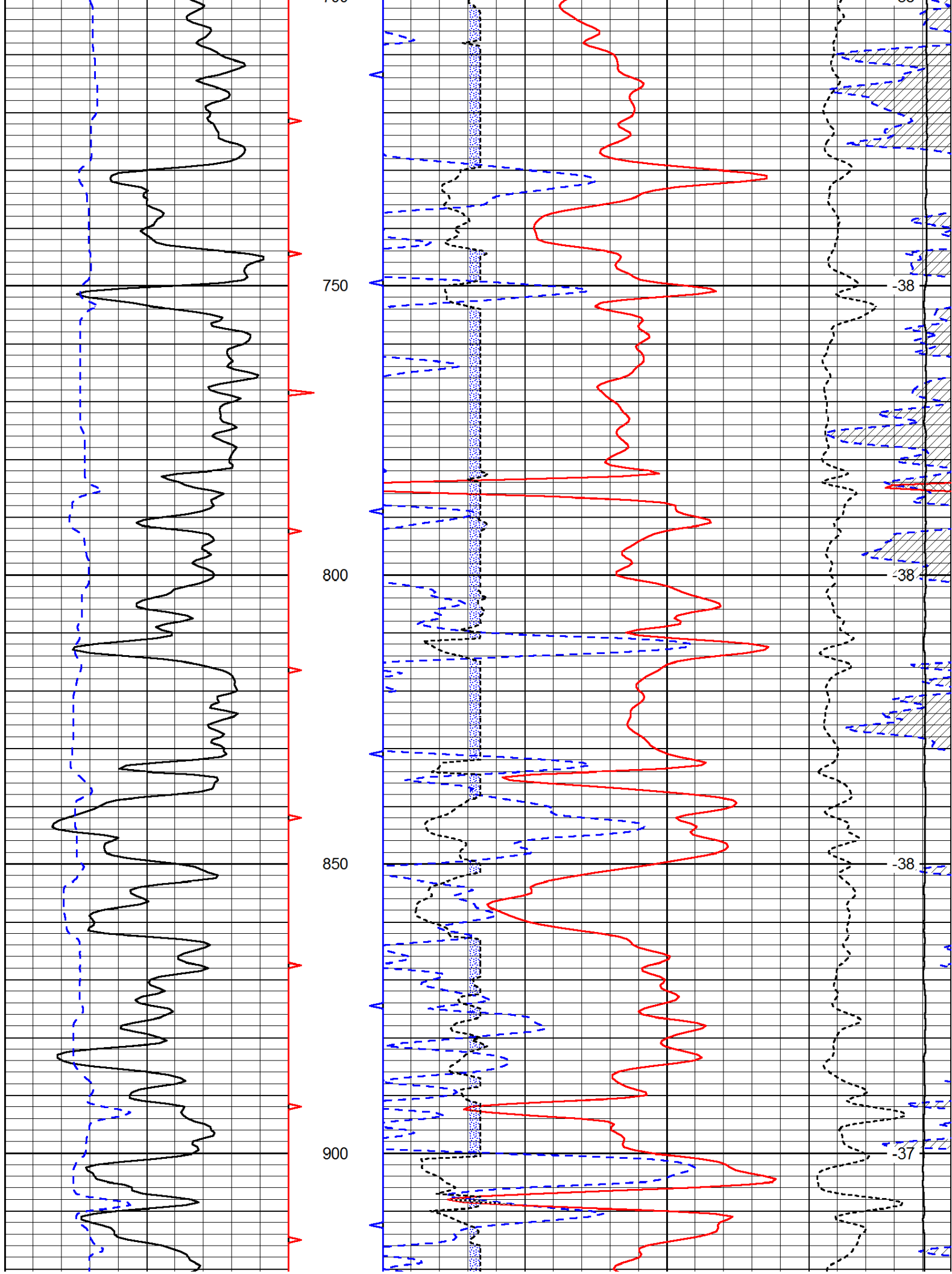
0	Gamma Ray	150
6	Caliper (GAPI)	16

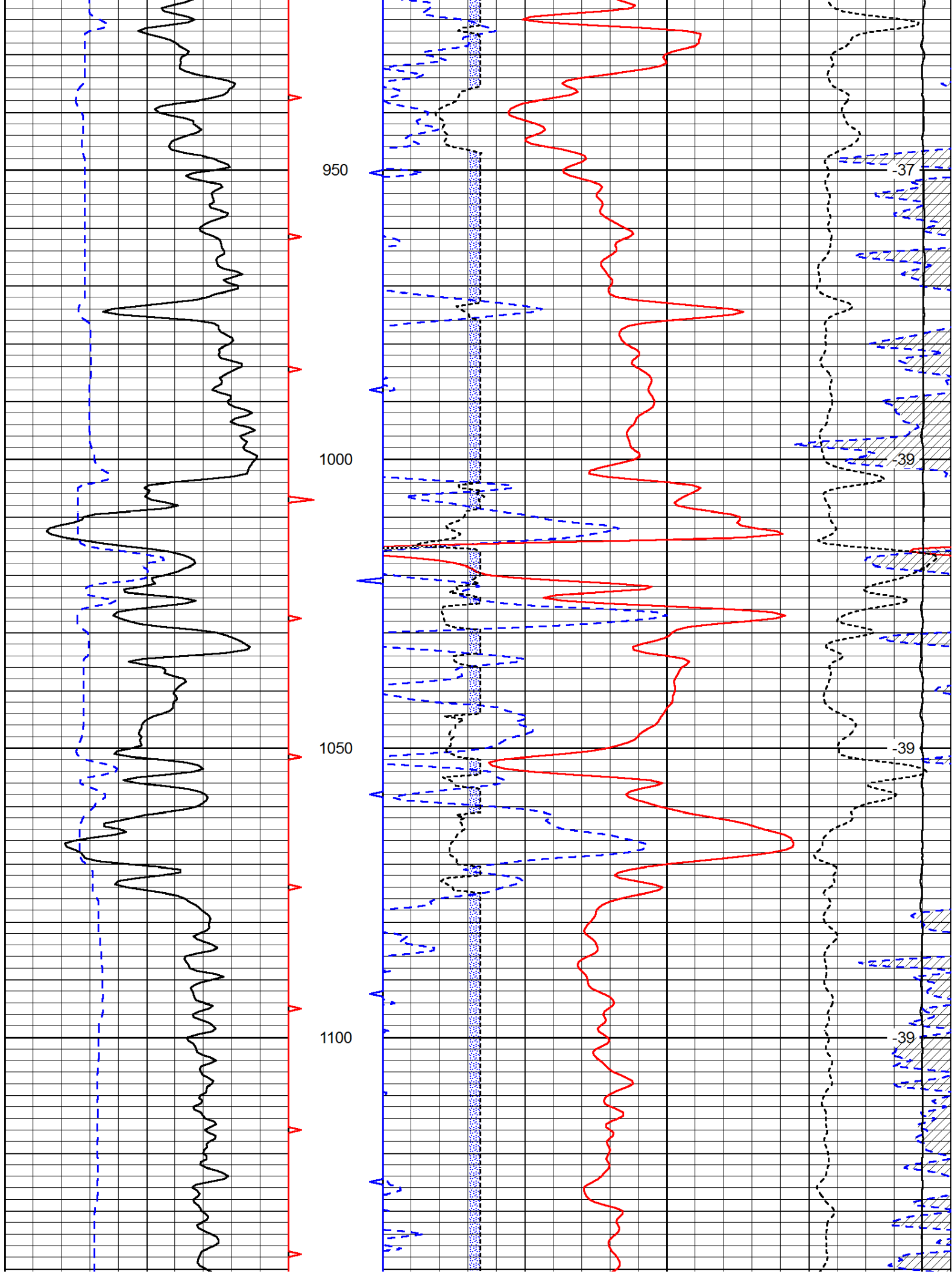
30	Compensated Neutron (Limestone)			-10	
30	Compensated Density (Limestone)			-10	
2.625	DGA	3.425	-0.25	Correction	0.25
15000	Line Tension			0	

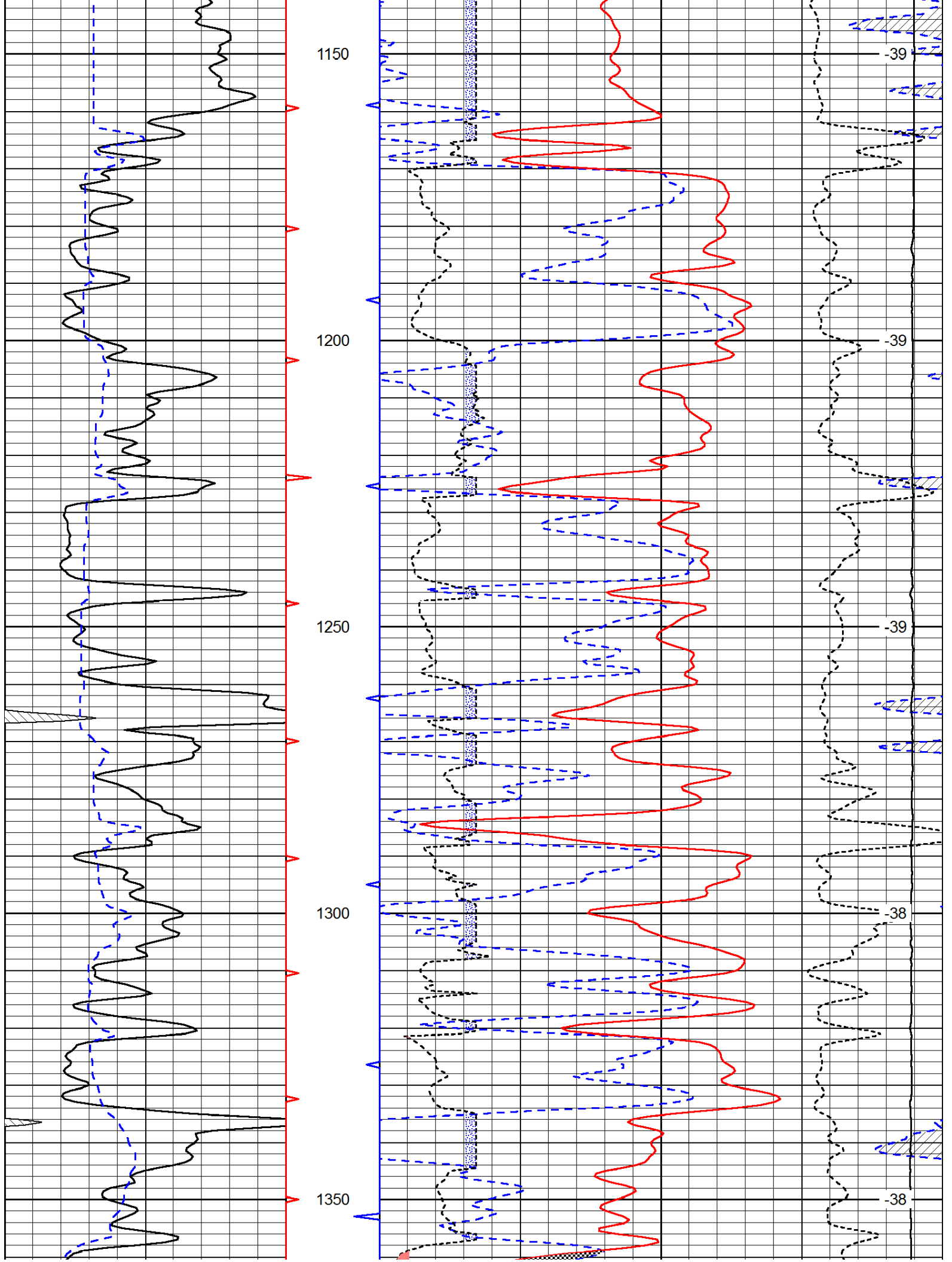
LSPD

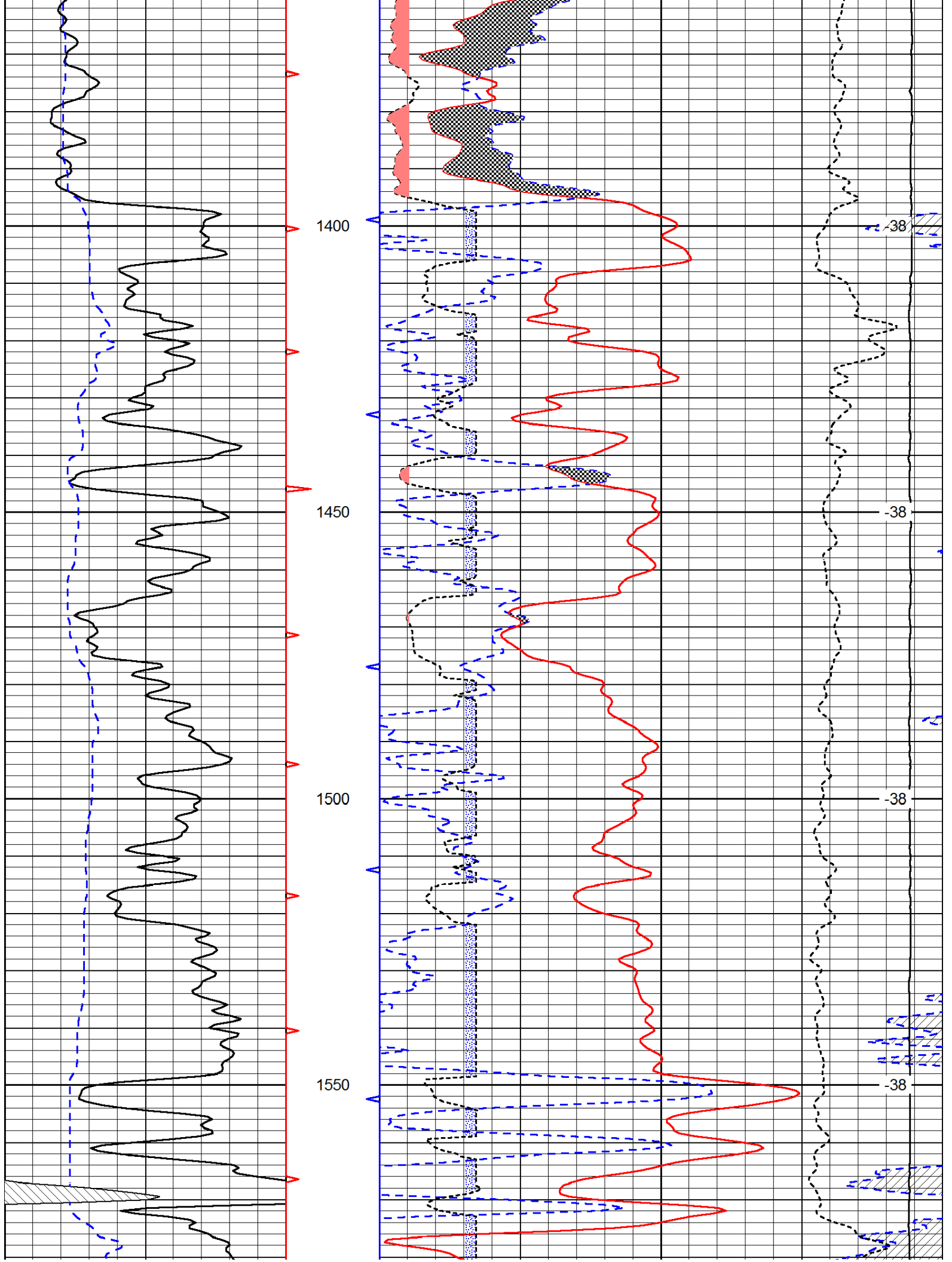


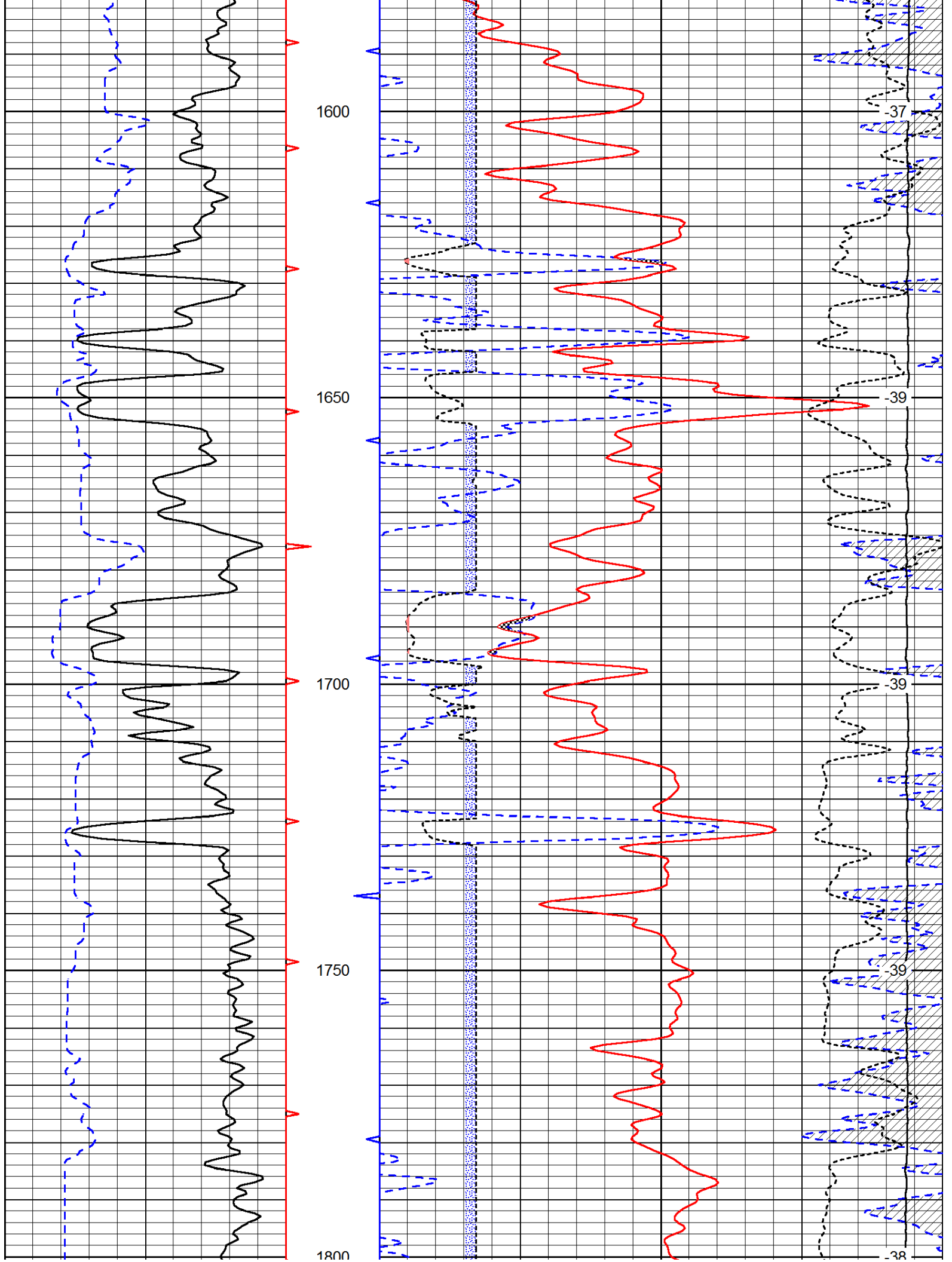


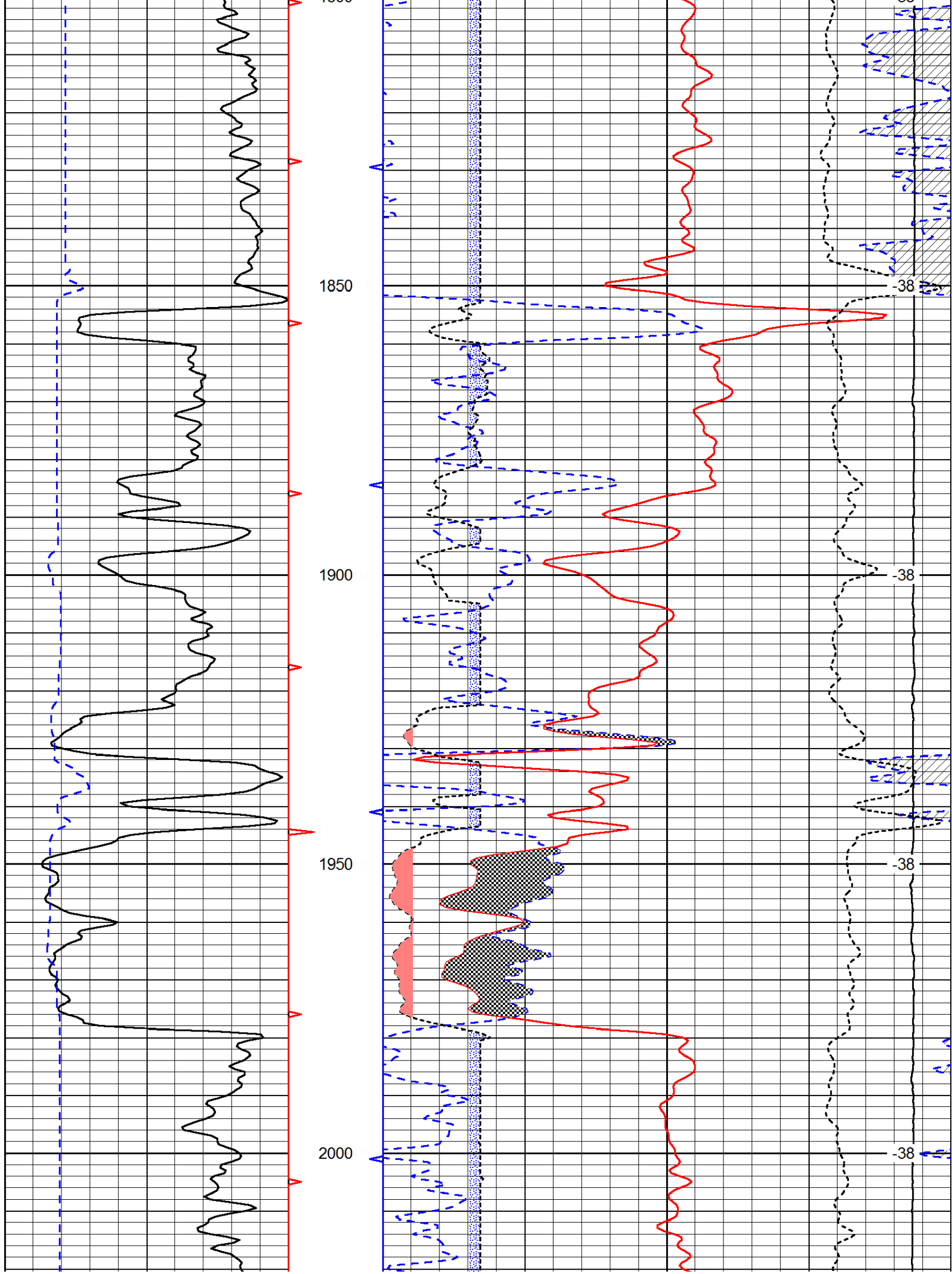


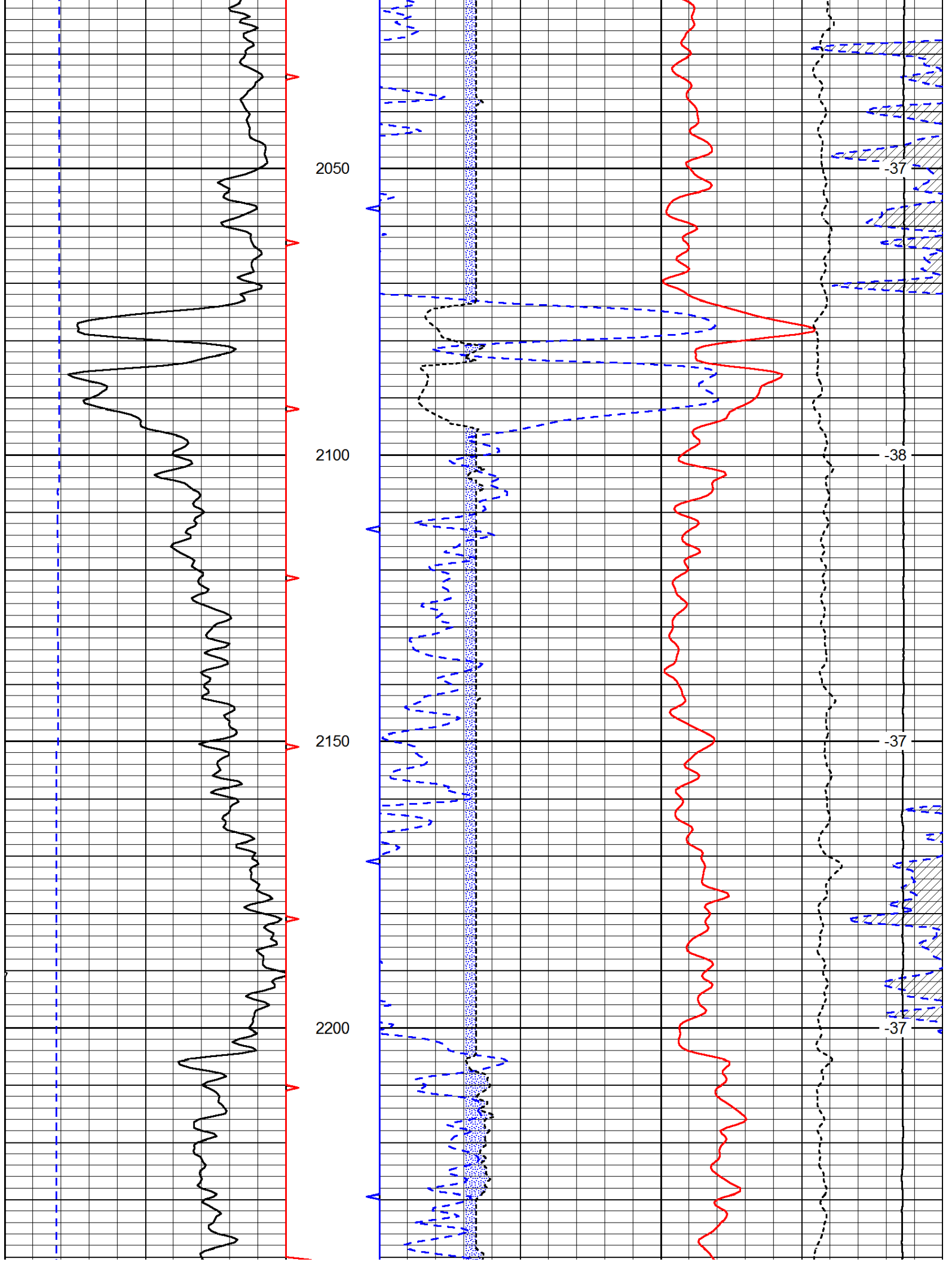


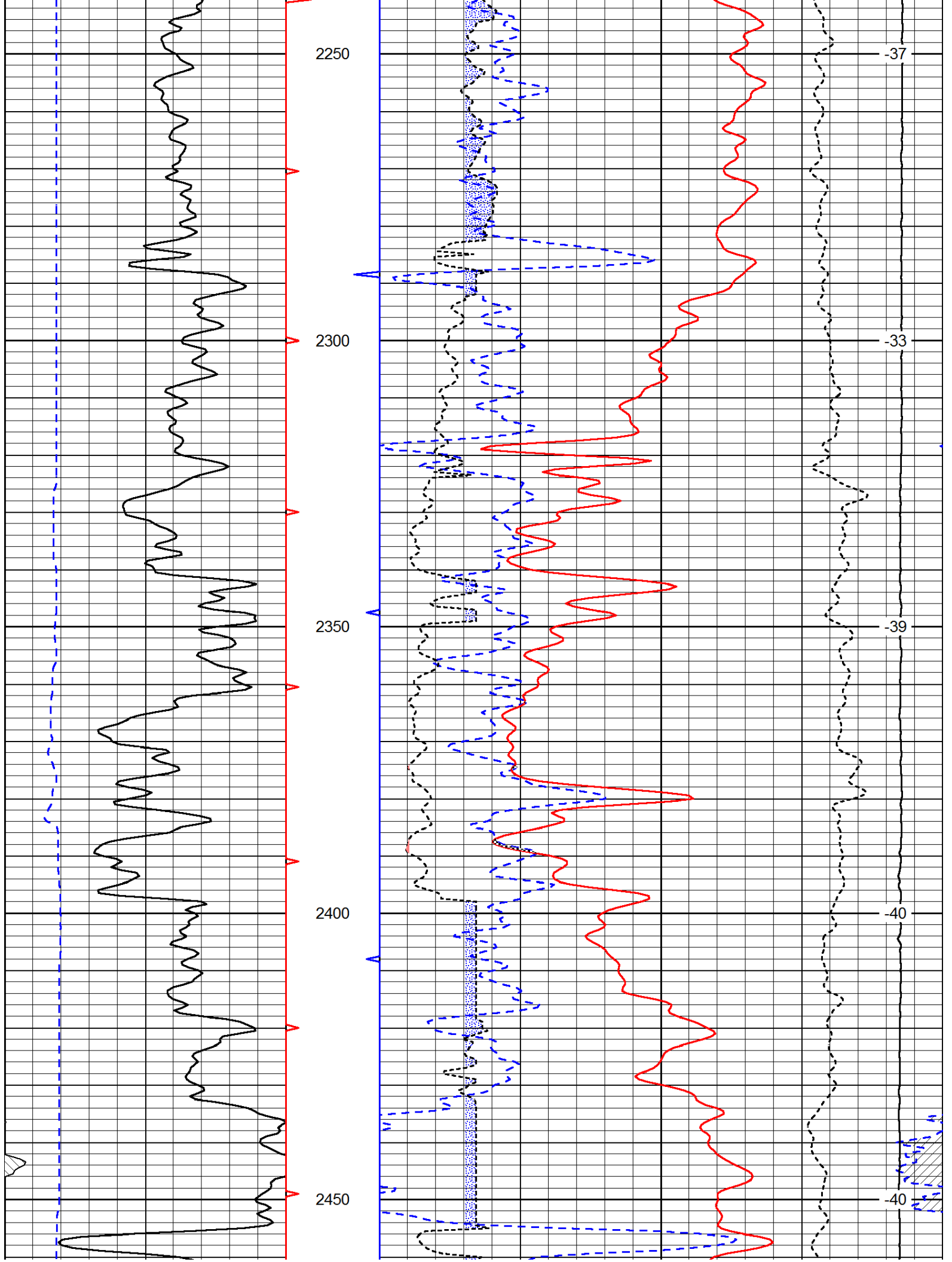


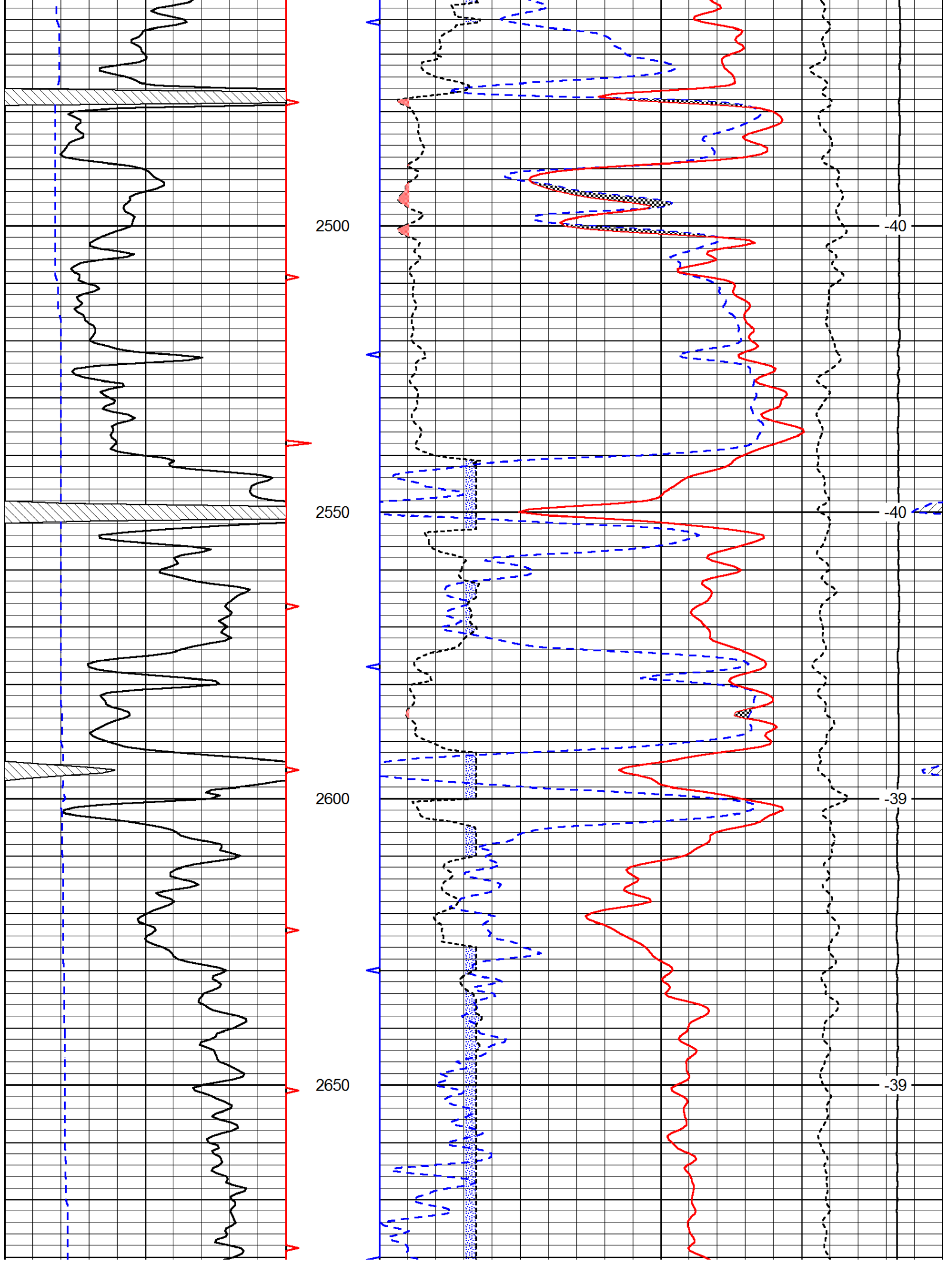


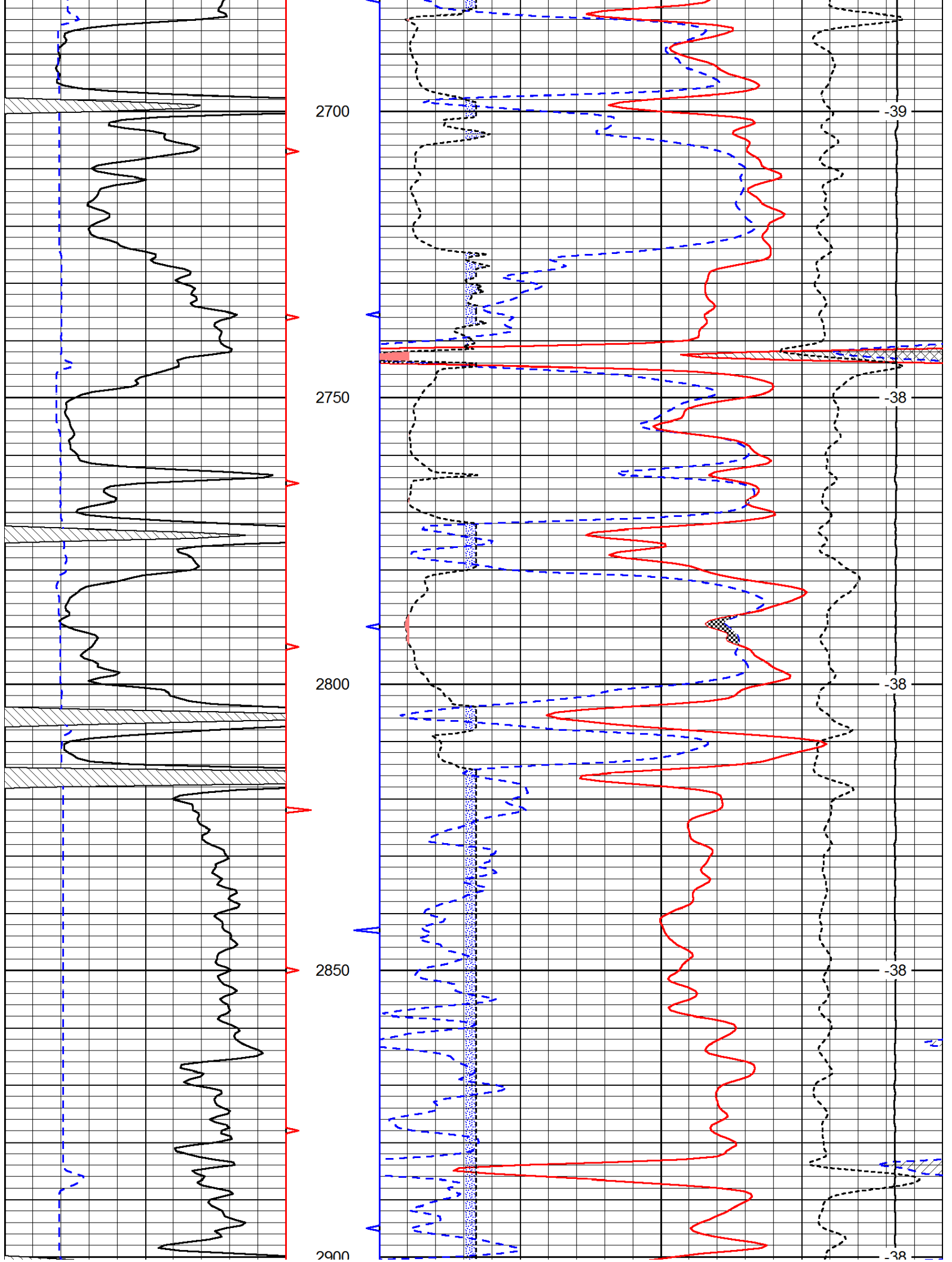


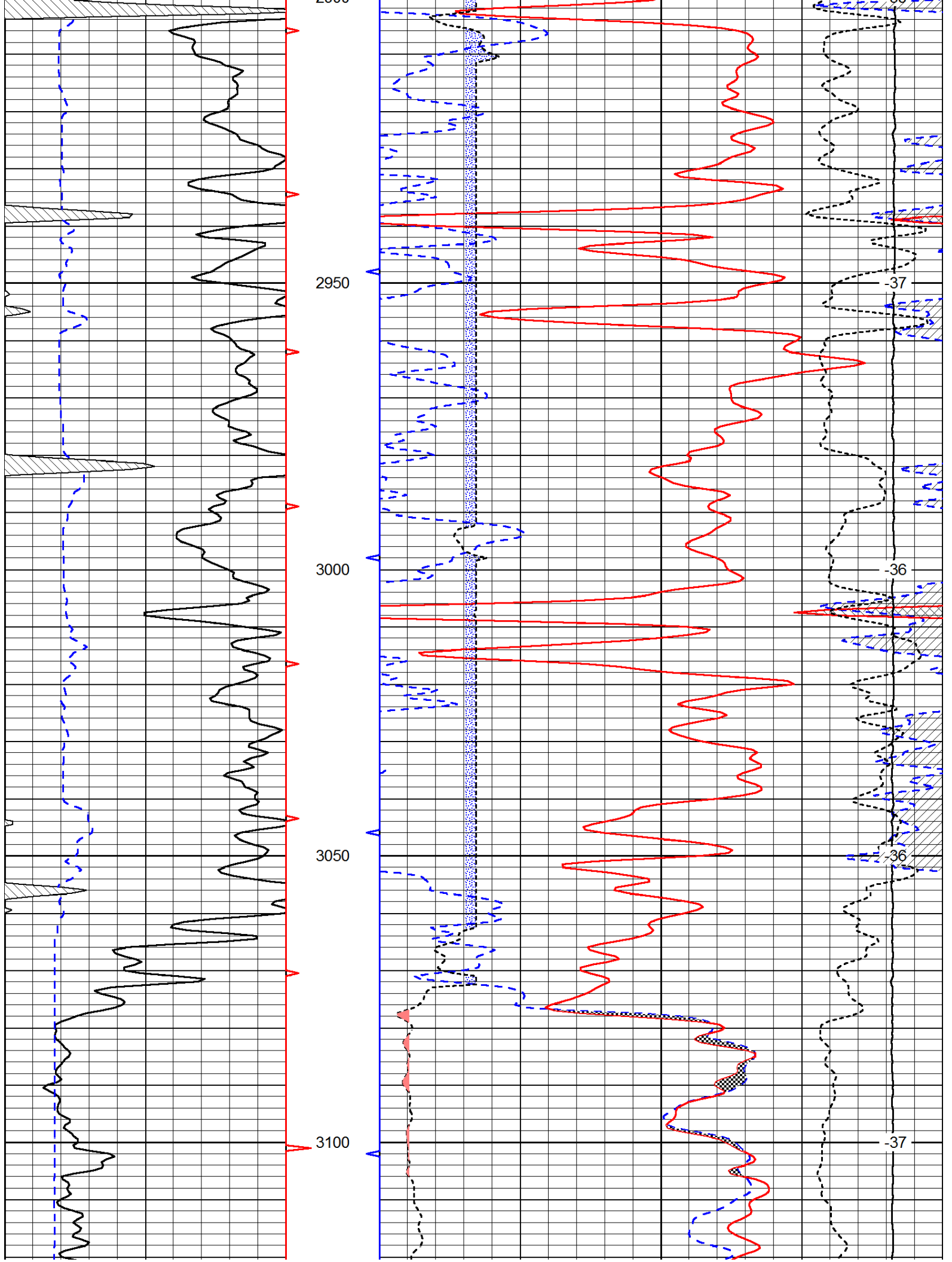


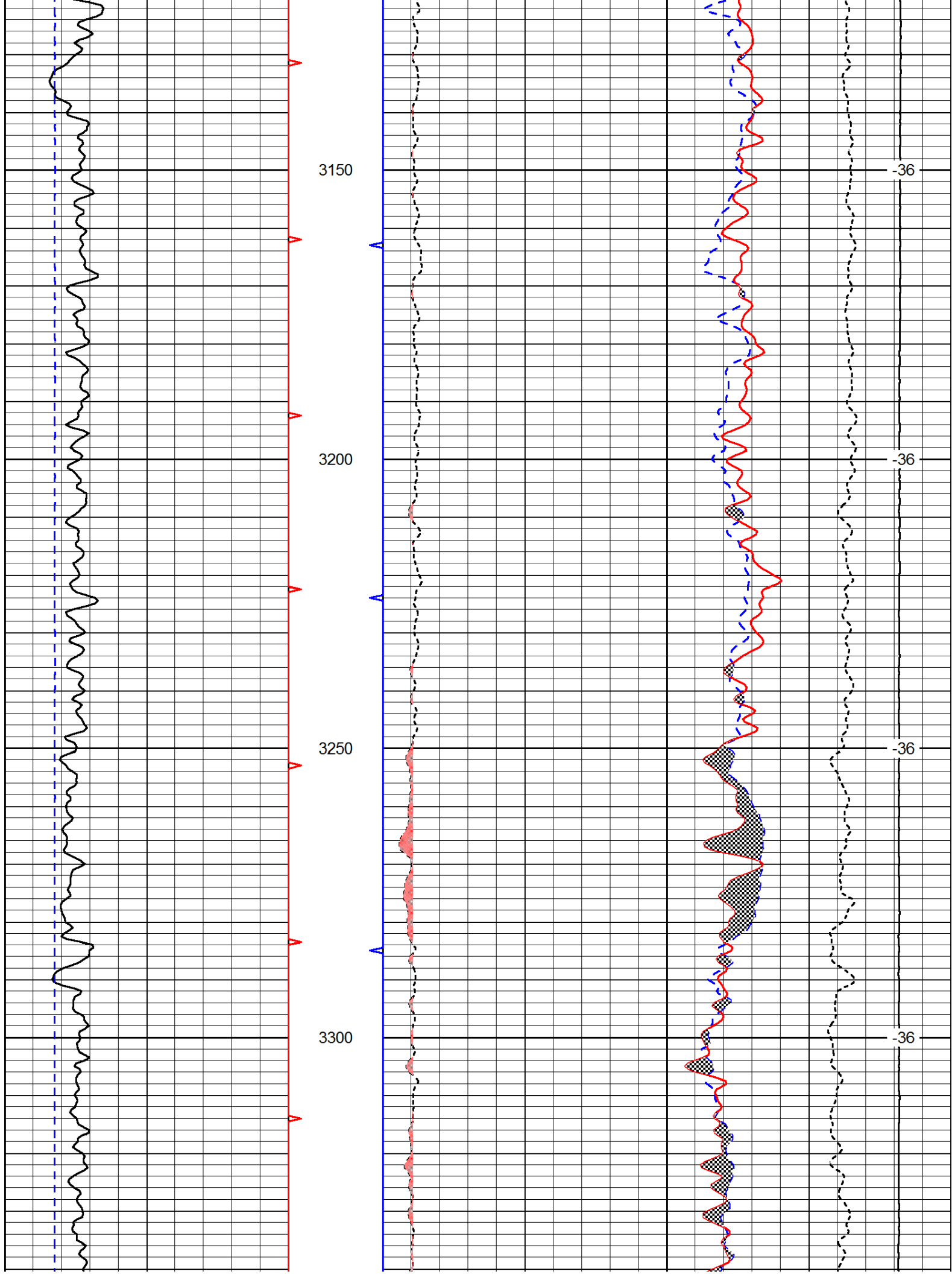


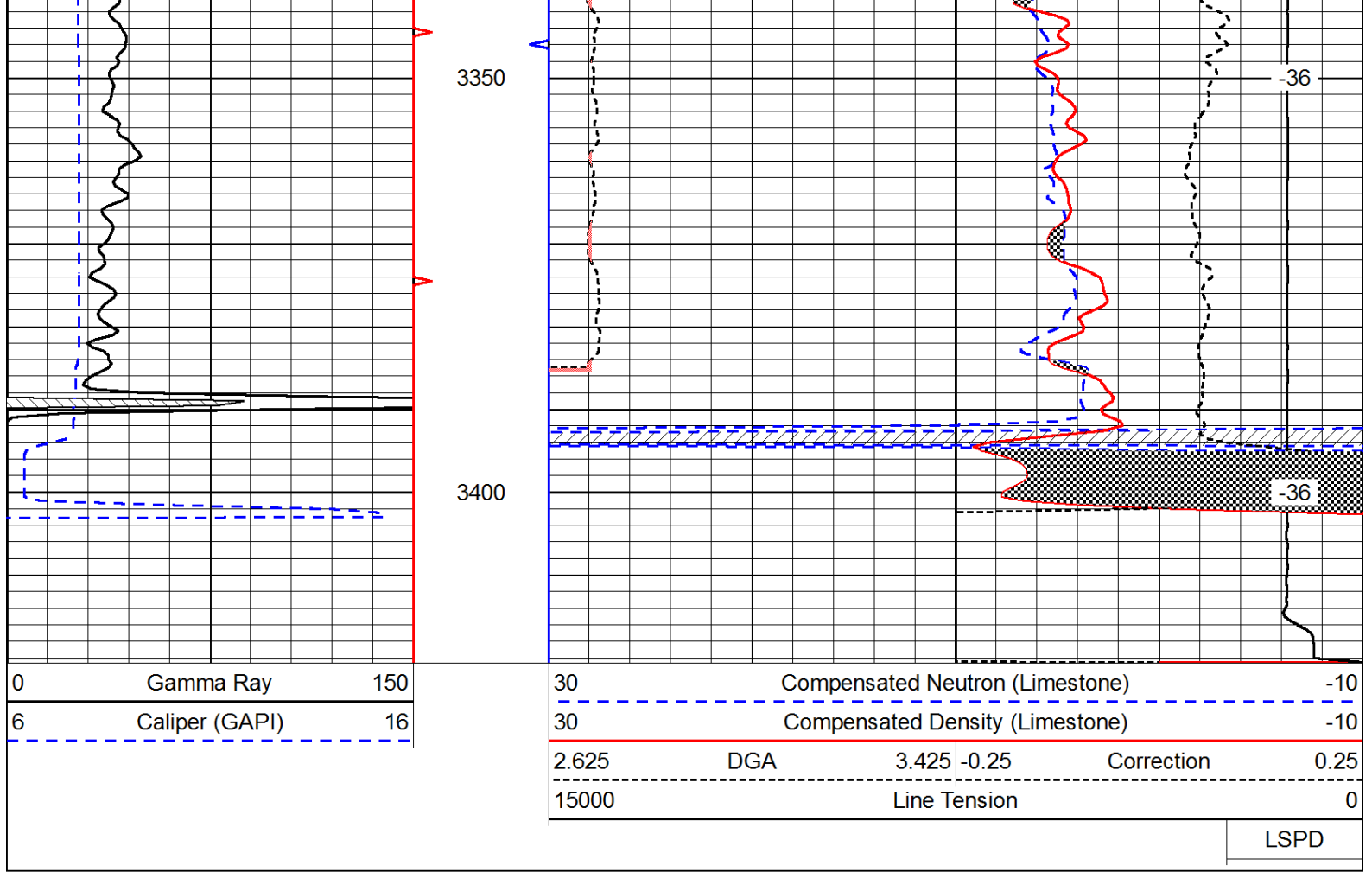












LSPD