



Pioneer Energy Services

Dual Induction Log

15-035-24565-00-00

API No.

Company **Phillips Oil Properties, Inc.**

Well **Kerr #6-1**

Field **Wilson**

County **Cowley**

State

Kansas

Location **590' FNL & 730' FEL**

Other Services
CNL/CDL
MEL

Sec: **6** Twp: **33S** Rge: **6E**

Permanent Datum **Ground Level** Elevation **1301**

Log Measured From **Kelly Bushing** 9 Ft. Above Perm. Datum

Elevation
K.B. 1310
D.F.
G.L. 1301

Drilling Measured From **Kelly Bushing**

Date **7/22/2014**

Run Number **One**

Depth Driller **3415**

Depth Logger **3415**

Bottom Logged Interval **3414**

Top Log Interval **300**

Casing Driller **8.625 @ 329**

Casing Logger **340**

Bit Size **7.875**

Type Fluid in Hole **Chemical**

Salinity, ppm CL **750**

Density / Viscosity **9.3 42**

pH / Fluid Loss **9.5 11.9**

Source of Sample **Flowline**

Rm @ Meas. Temp **2.80 @ 96**

Rmf @ Meas. Temp **2.10 @ 96**

Rmc @ Meas. Temp **3.78 @ 96**

Source of Rmf / Rmc **Charts**

Rm @ BHT **2.44 @ 110**

Operating Rig Time **4 Hours**

Max Rec. Temp. F **110**

Equipment Number **91**

Location **Hays**

Recorded By **D. Schmidt**

Witnessed By **Troy Phillips**

<<< Fold Here >>>

All interpretations are opinions based on inferences from electrical or other measurements and we cannot and do not guarantee the accuracy or correctness of any interpretation, and we shall not, except in the case of gross or willful negligence on our part, be liable or responsible for any loss, costs, damages, or expenses incurred or sustained by anyone resulting from any interpretation made by any of our officers, agents or employees. These interpretations are also subject to our general terms and conditions set out in our current Price Schedule.

Comments

Thank you for using Pioneer Energy Services
www.pioneerenergy.com
 785 625 3858
 Winfield,
 East to 201 Rd, 1 South,
 1 West, 1 South, 1/8 West,
 South into

Database File: c:\warrior\data\phillips oil prop_kerr #6-1\phillips_kerr_6-1hd.db
 Dataset Pathname: dil/phstack
 Presentation Format: dil2in
 Dataset Creation: Tue Jul 22 18:00:04 2014
 Charted by: Depth in Feet scaled 1:600

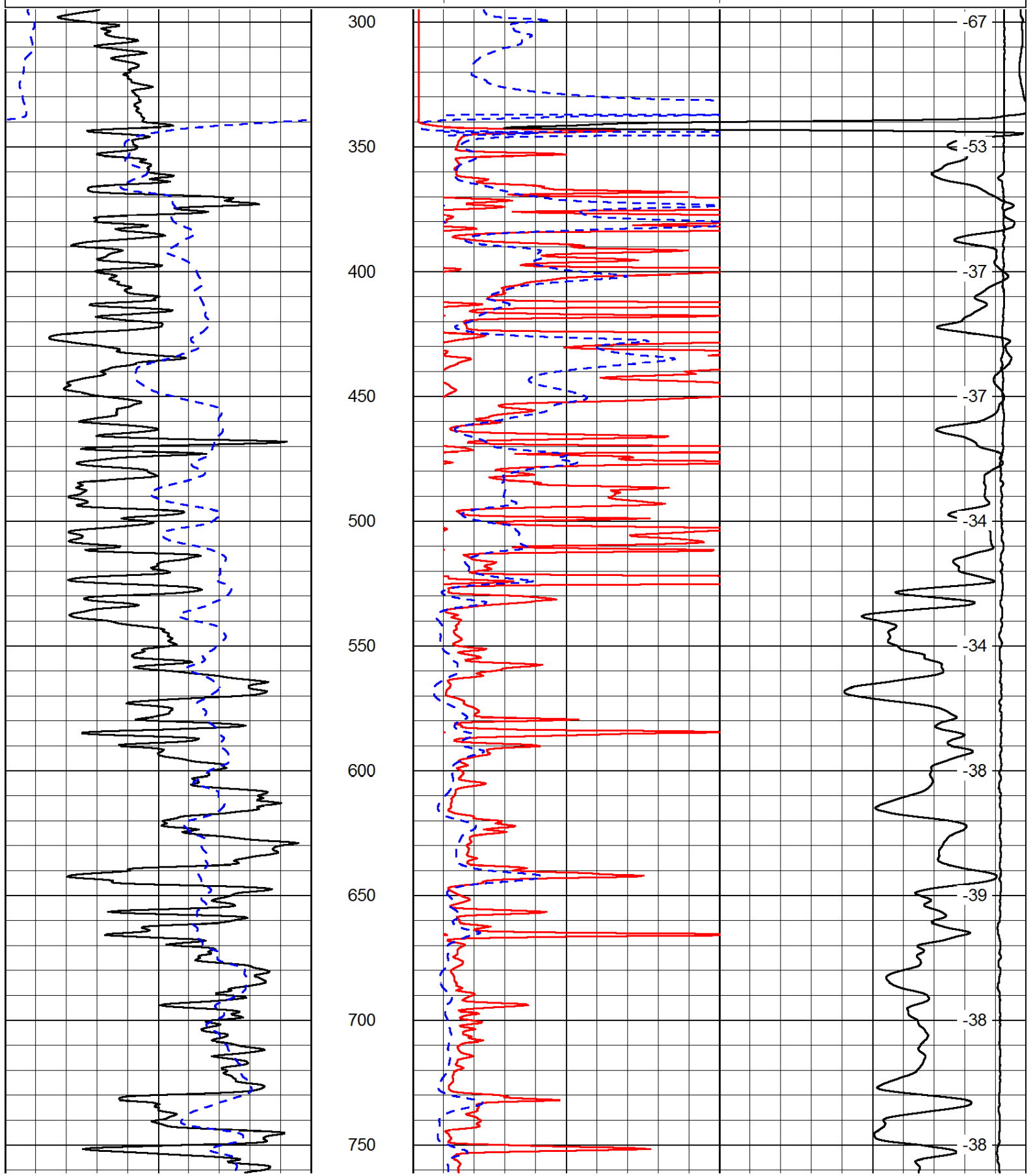
0	Gamma Ray	150
-200	SP (mV)	0

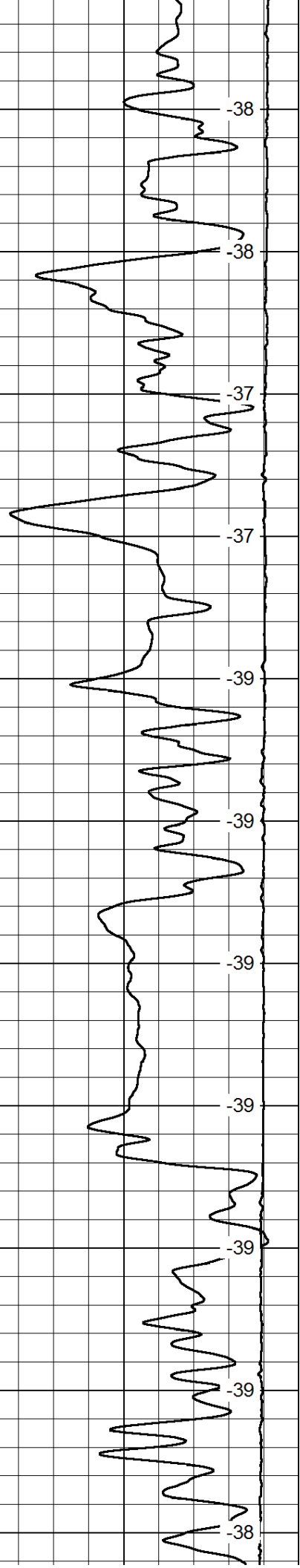
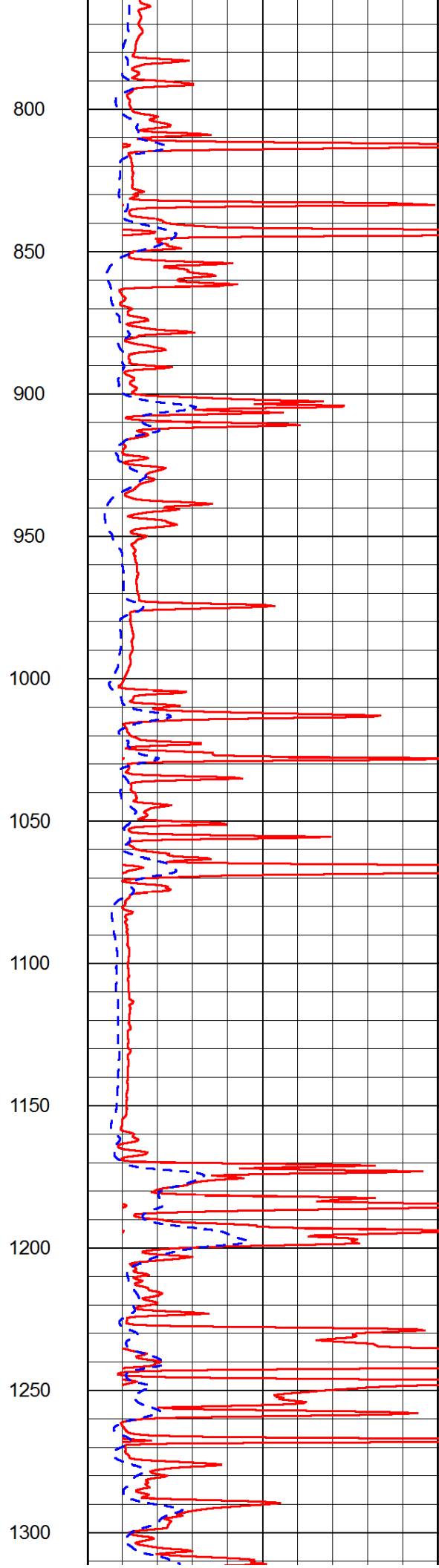
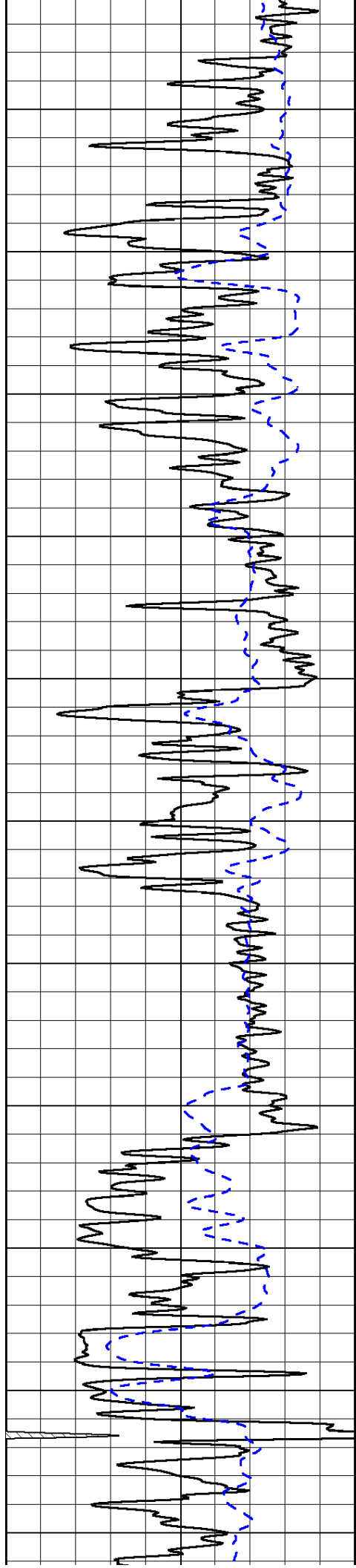
0	Shallow Resistivity	50
0	Deep Resistivity	50

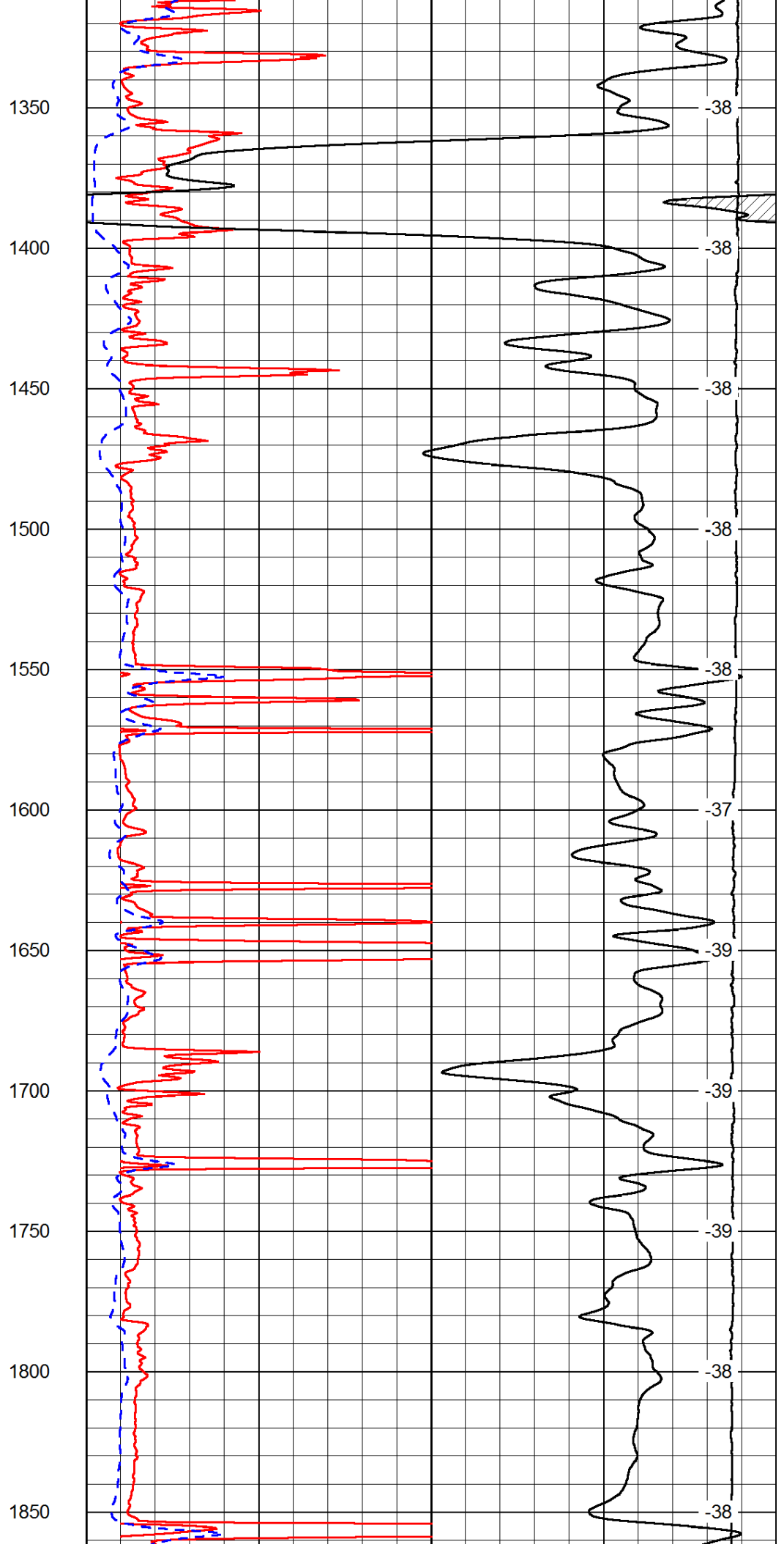
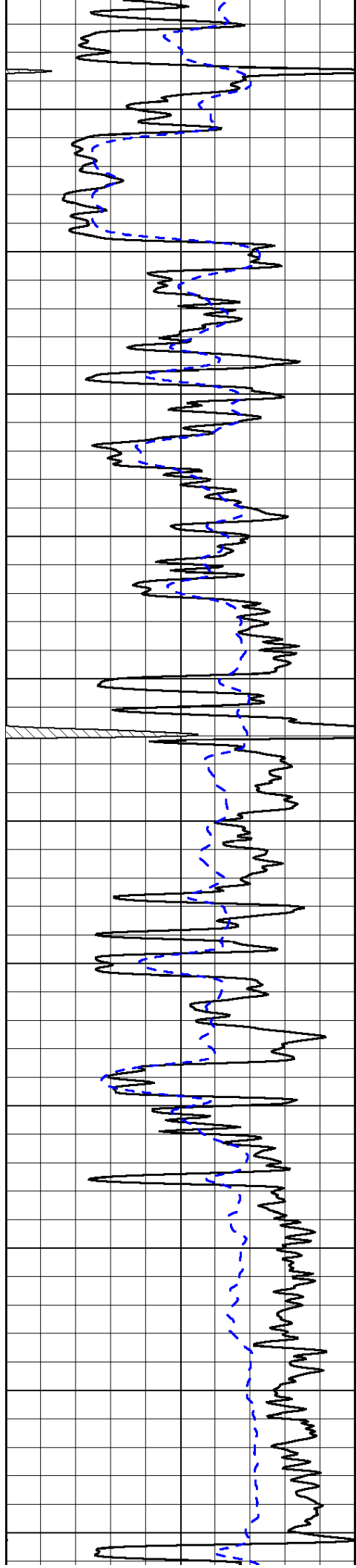
LSPD

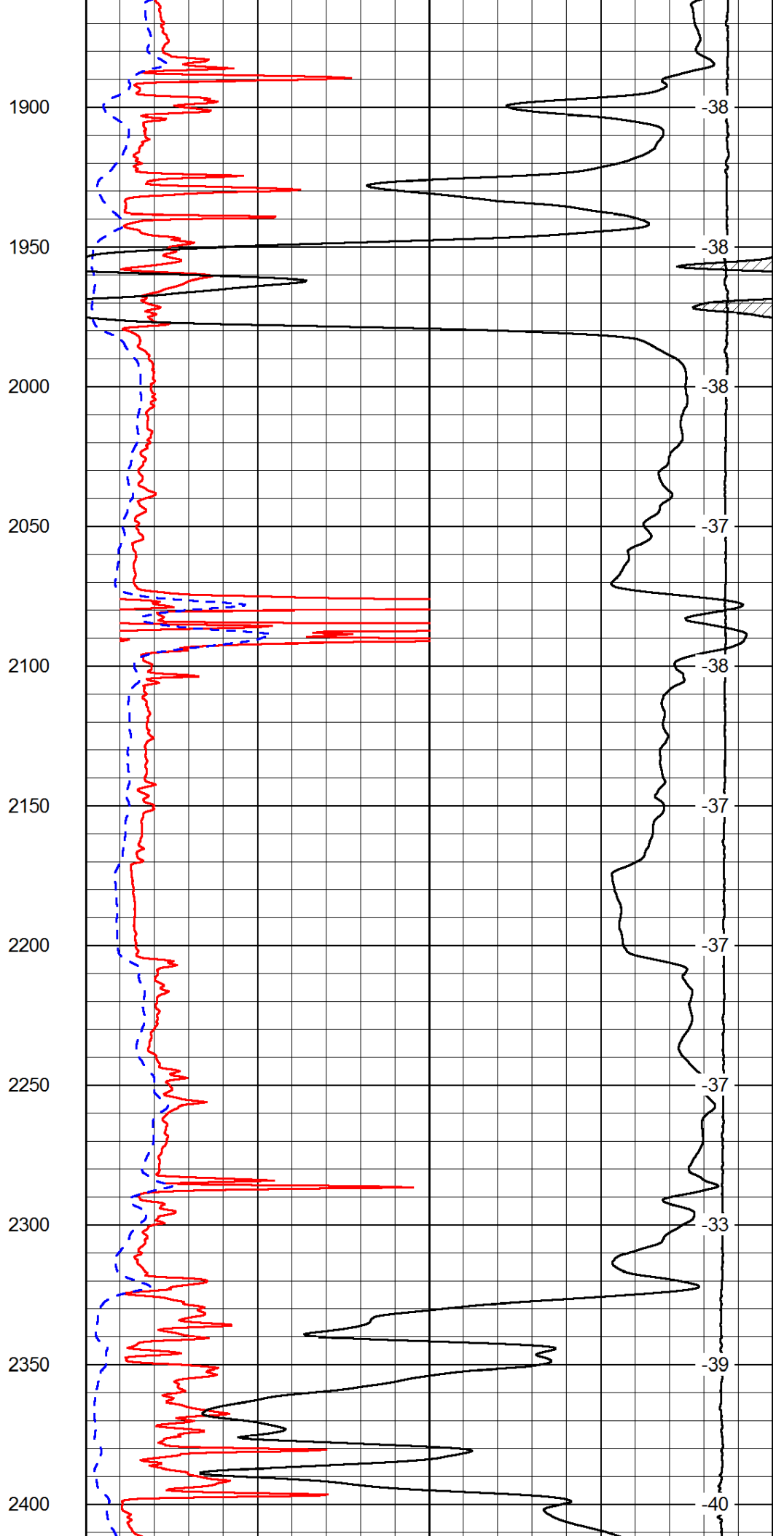
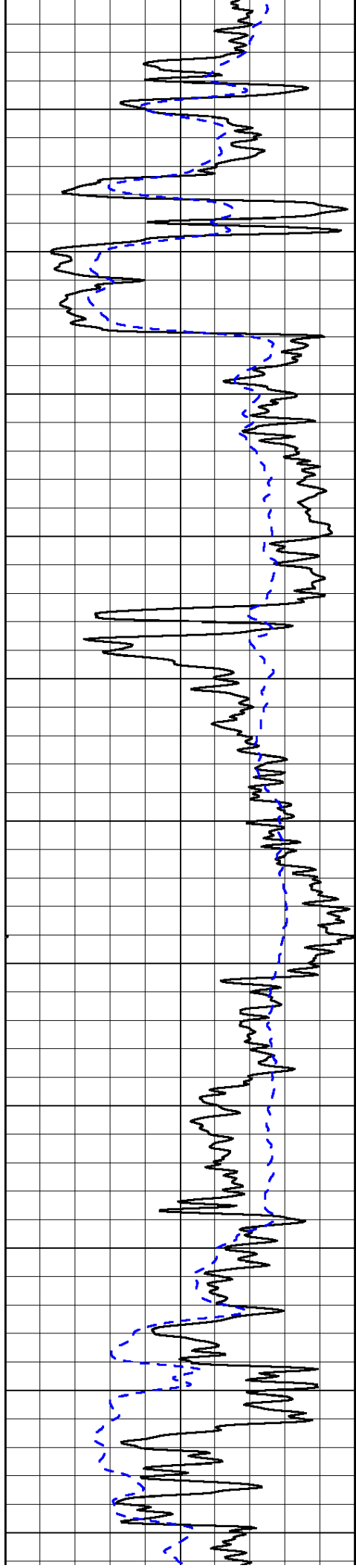
1000	Conductivity	0
15000	Line Tension	0

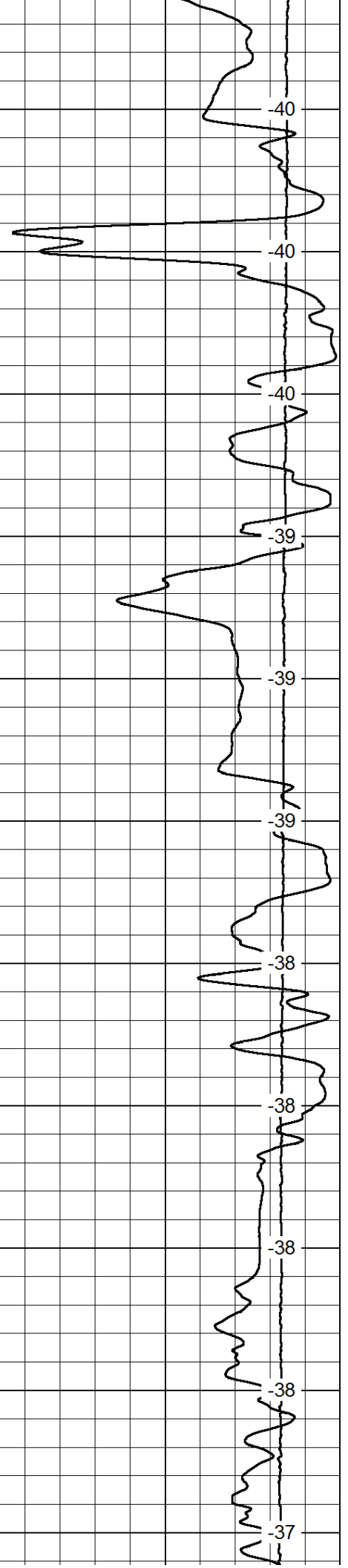
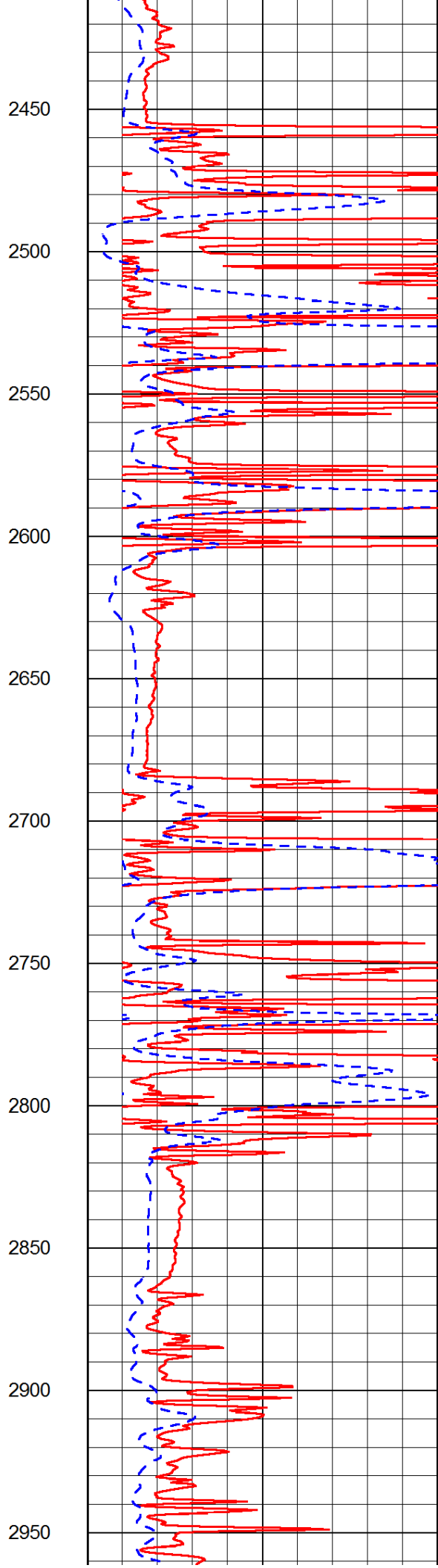
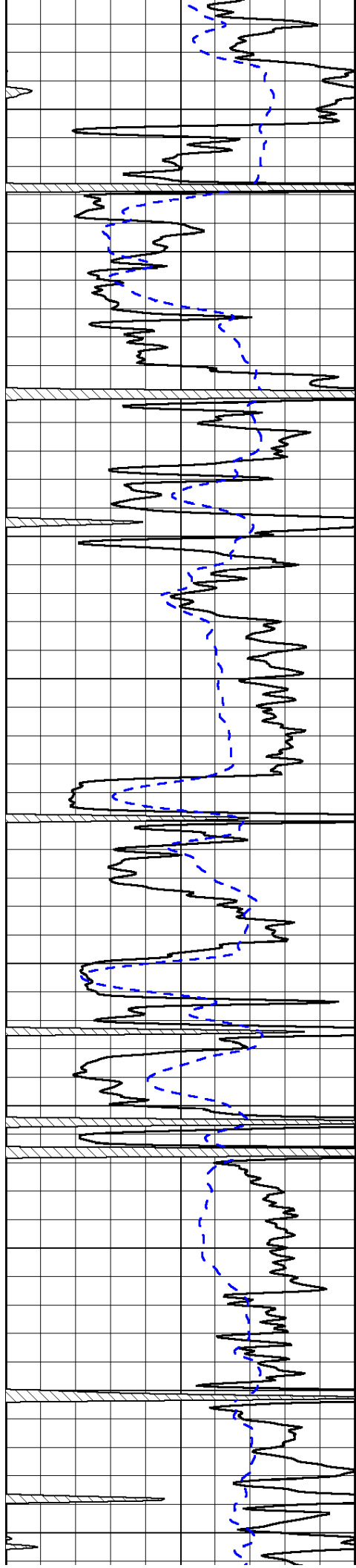
50	Shallow Resistivity	500
50	Deep Resistivity	500

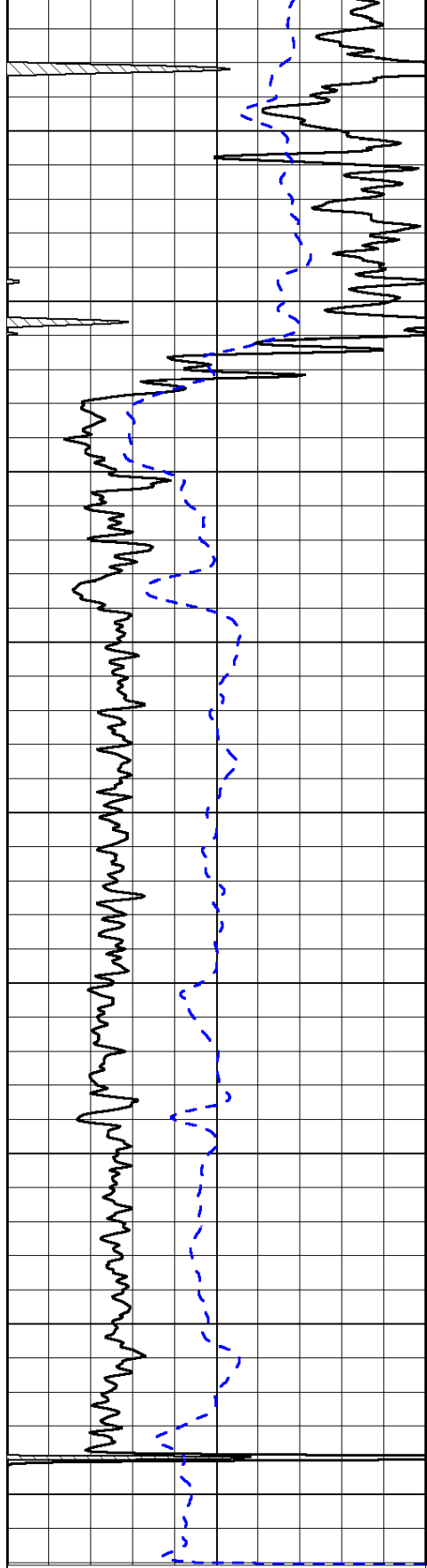




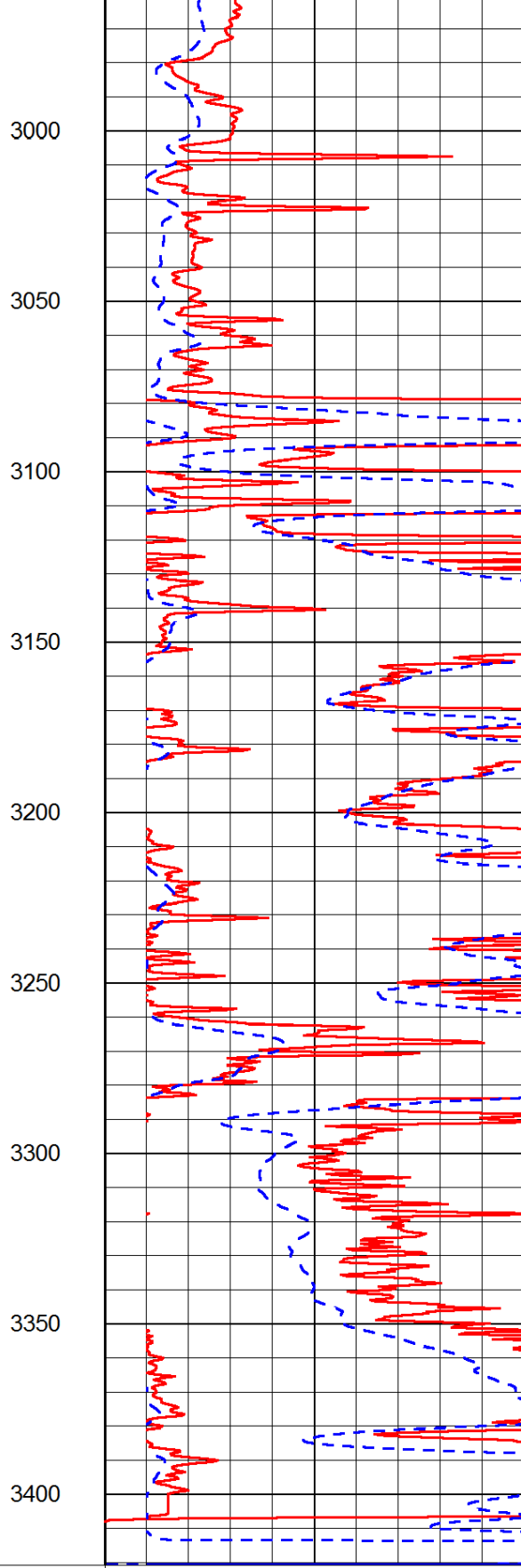




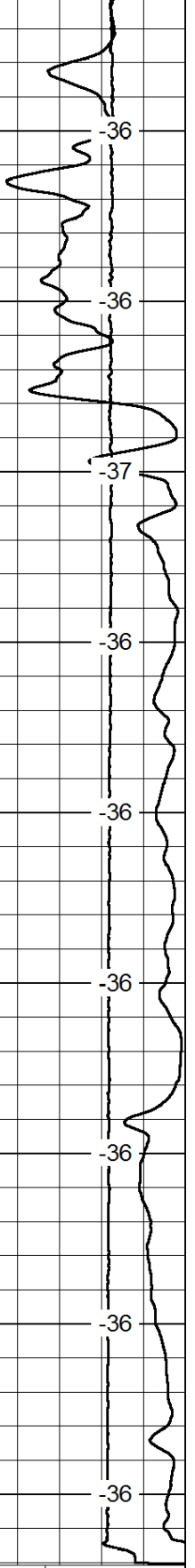




0 Gamma Ray 150
 -200 SP (mV) 0



0 Shallow Resistivity 50
 0 Deep Resistivity 50
 1000 Conductivity 0
 15000 Line Tension 0
 50 Shallow Resistivity 500
 50 Deep Resistivity 500



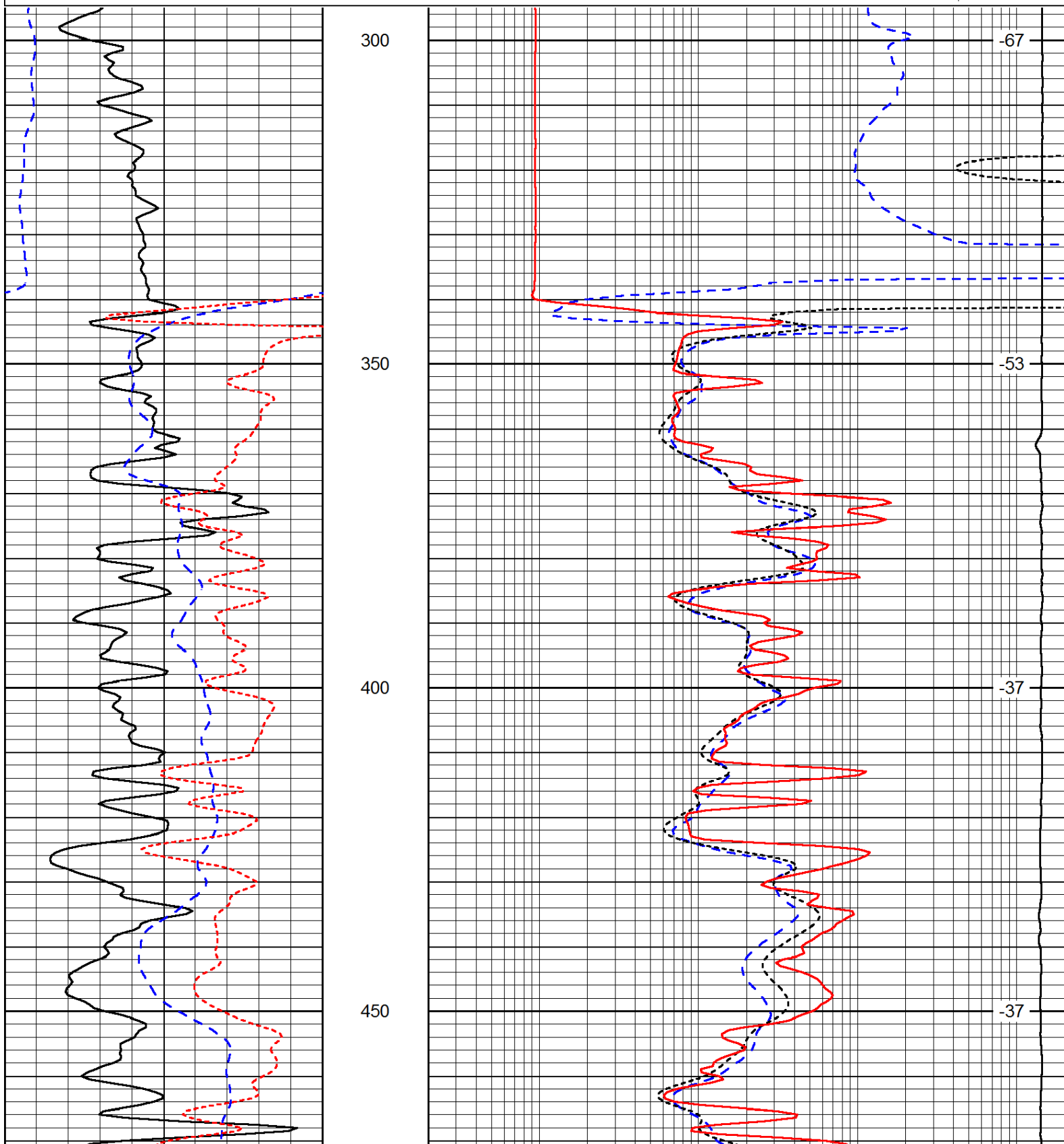
LSPD

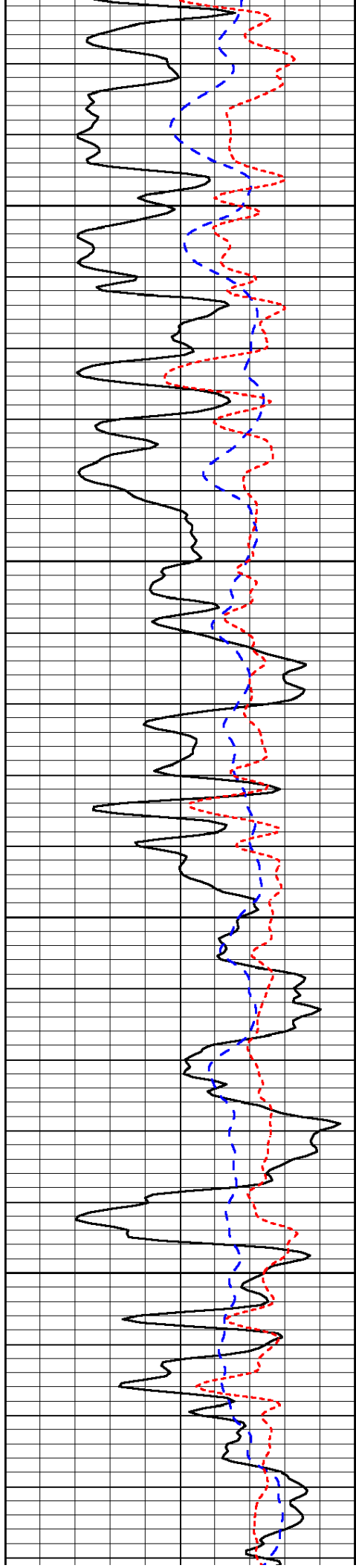
Database File: c:\warrior\data\phillips oil prop_kerr #6-1\phillips_kerr_6-1hd.db
 Dataset Pathname: dil/phstack
 Presentation Format: dil
 Dataset Creation: Tue Jul 22 18:00:04 2014
 Charted by: Depth in Feet scaled 1:240

0	Gamma Ray	150
-200	SP (mV)	0
-160	RxoRt	40

0.2	Deep Resistivity	2000
0.2	Medium Resistivity	2000
0.2	Shallow Resistivity	2000
15000	Line Tension	0

LSPD



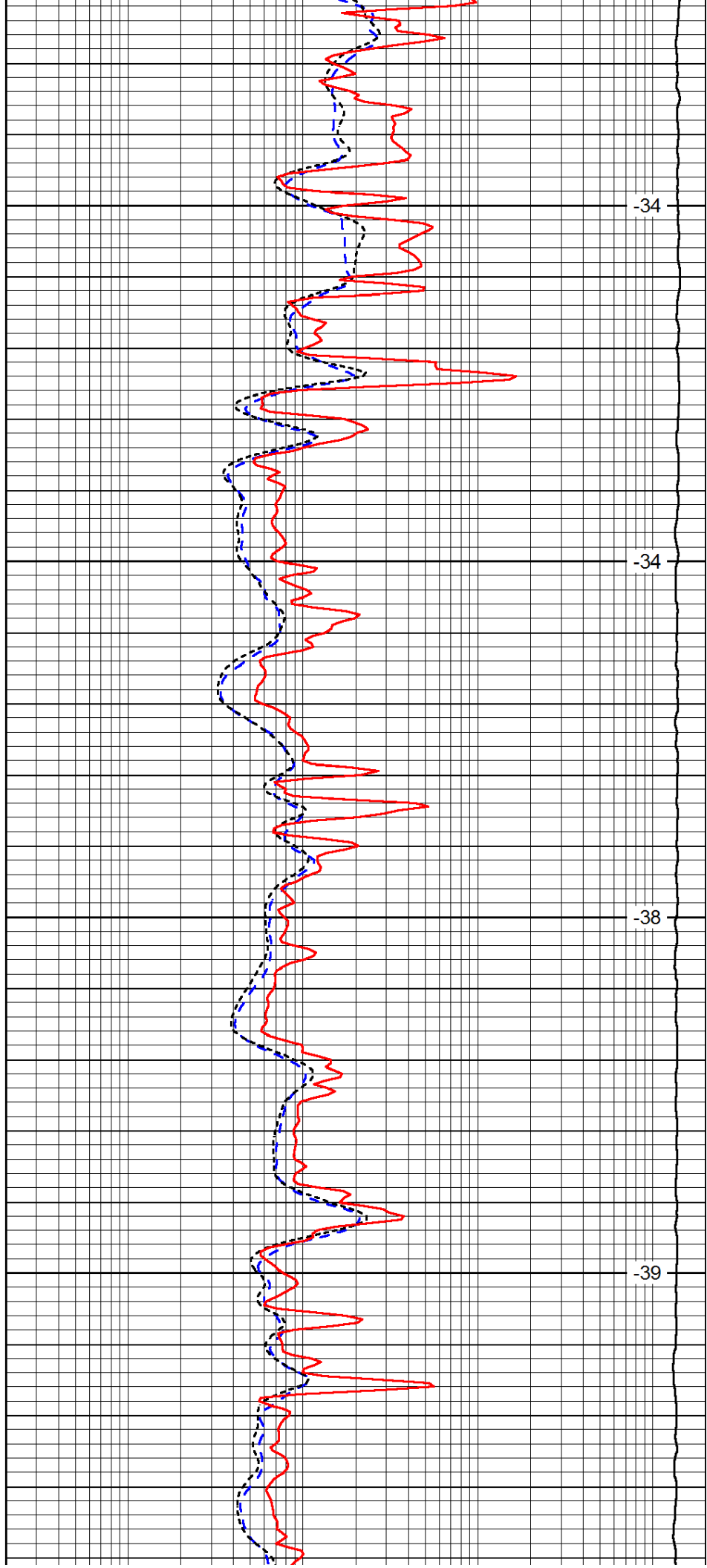


500

550

600

650

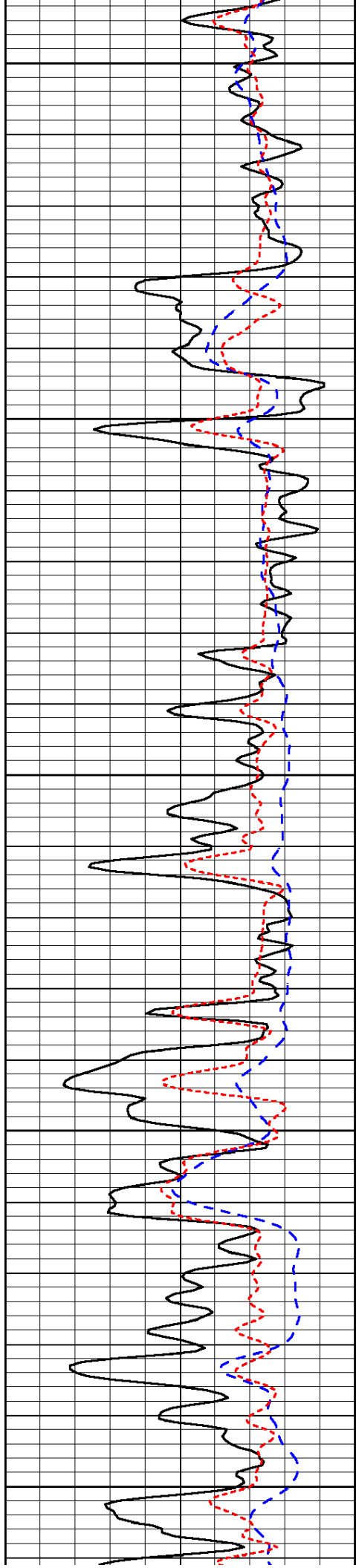


-34

-34

-38

-39



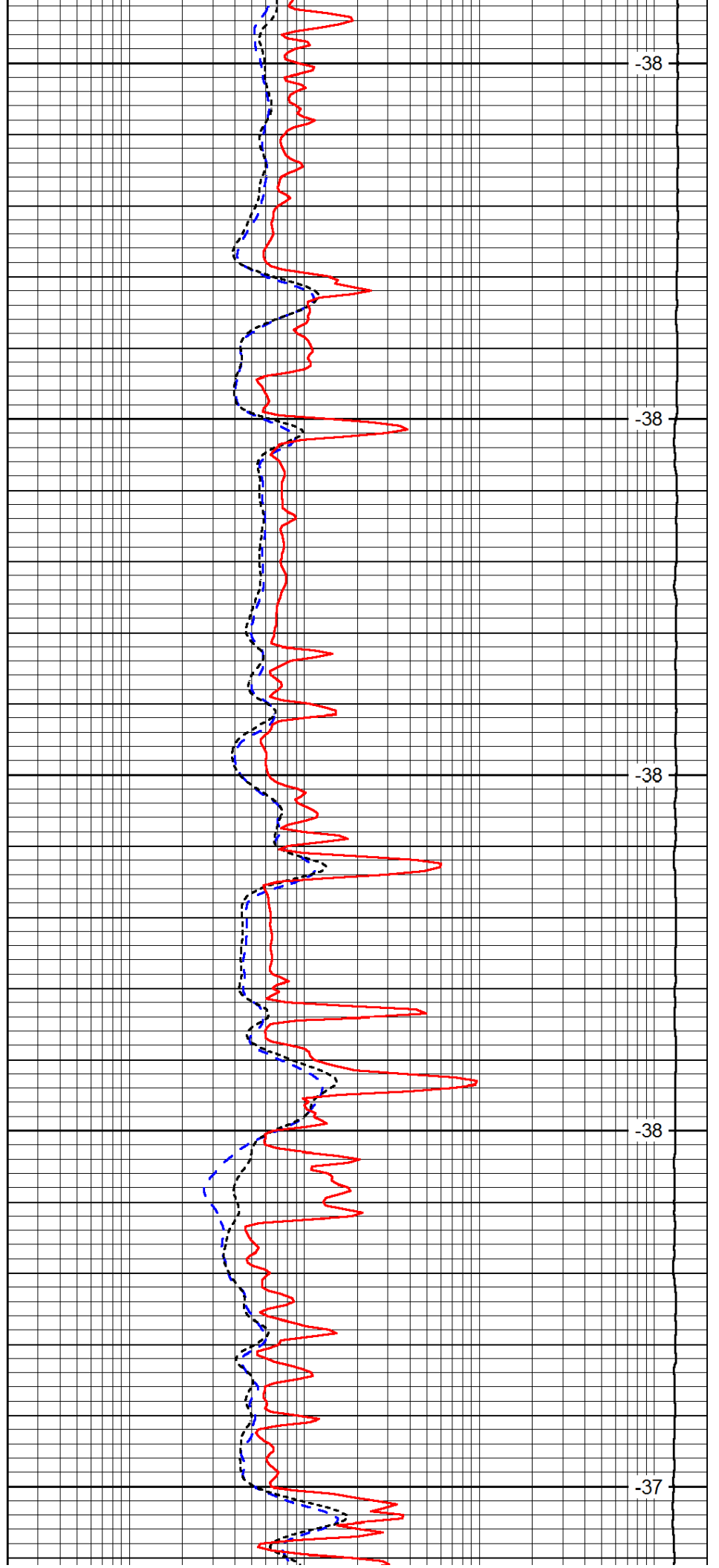
700

750

800

850

900



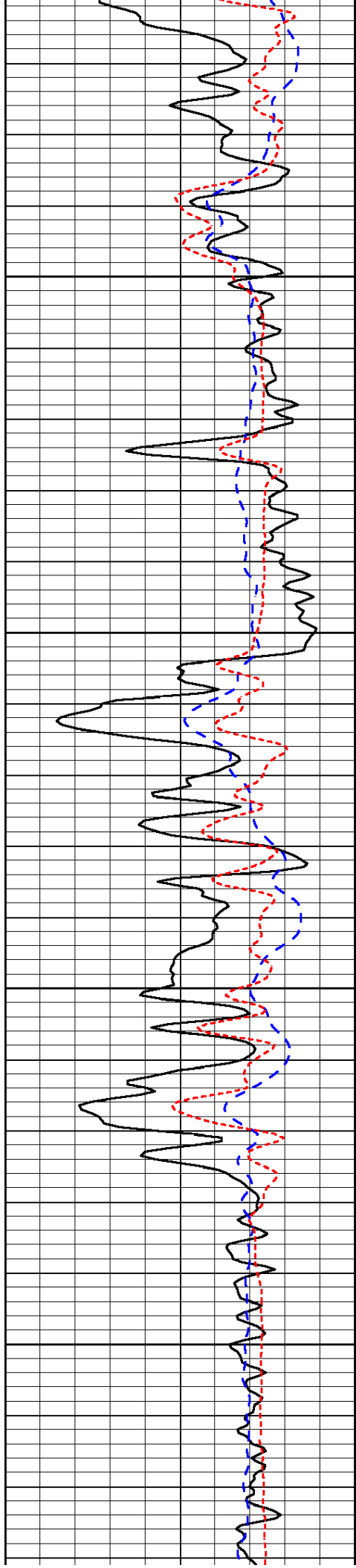
-38

-38

-38

-38

-37

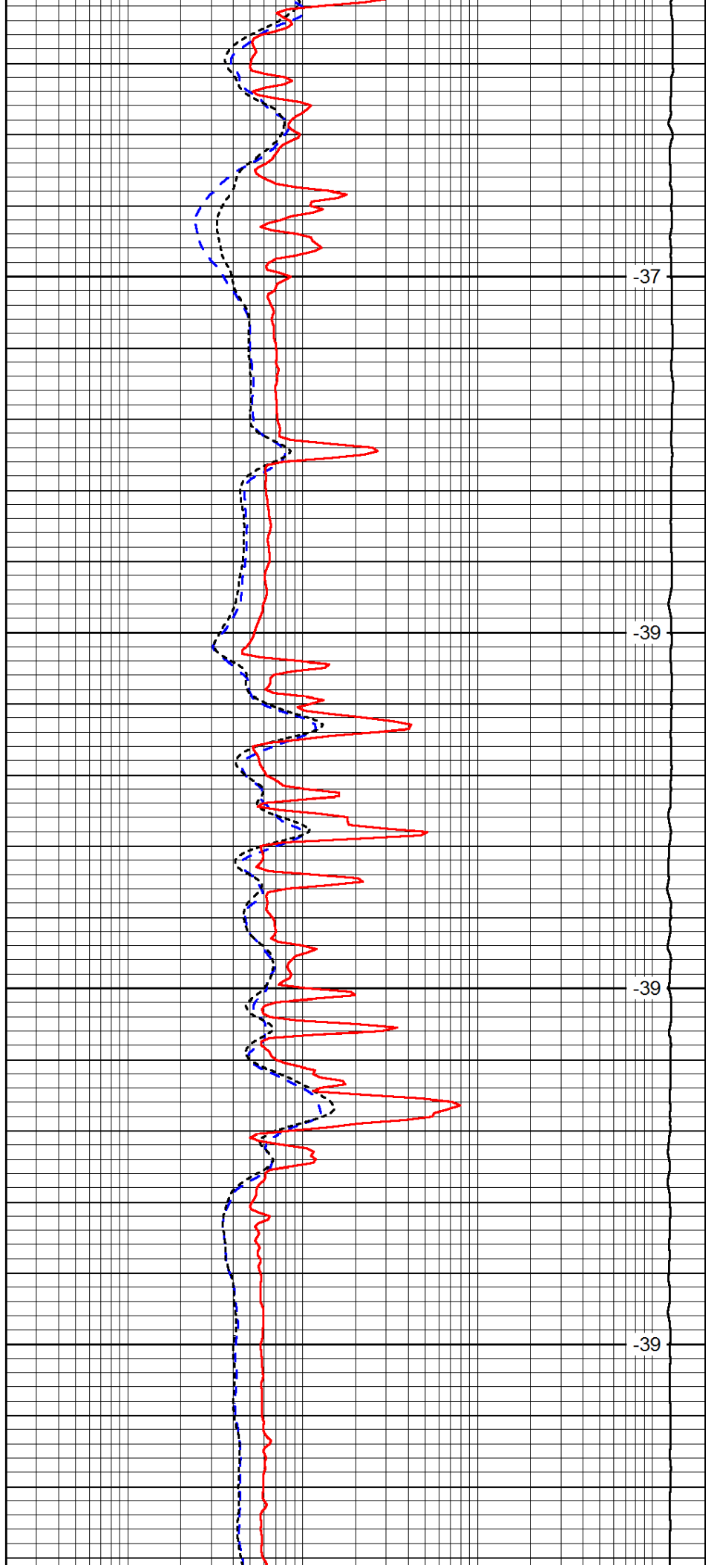


950

1000

1050

1100

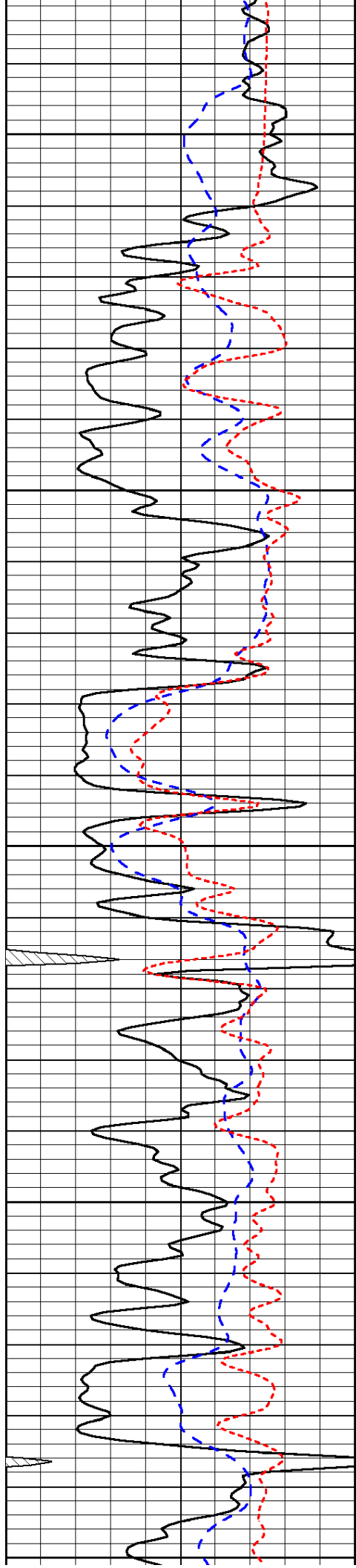


-37

-39

-39

-39



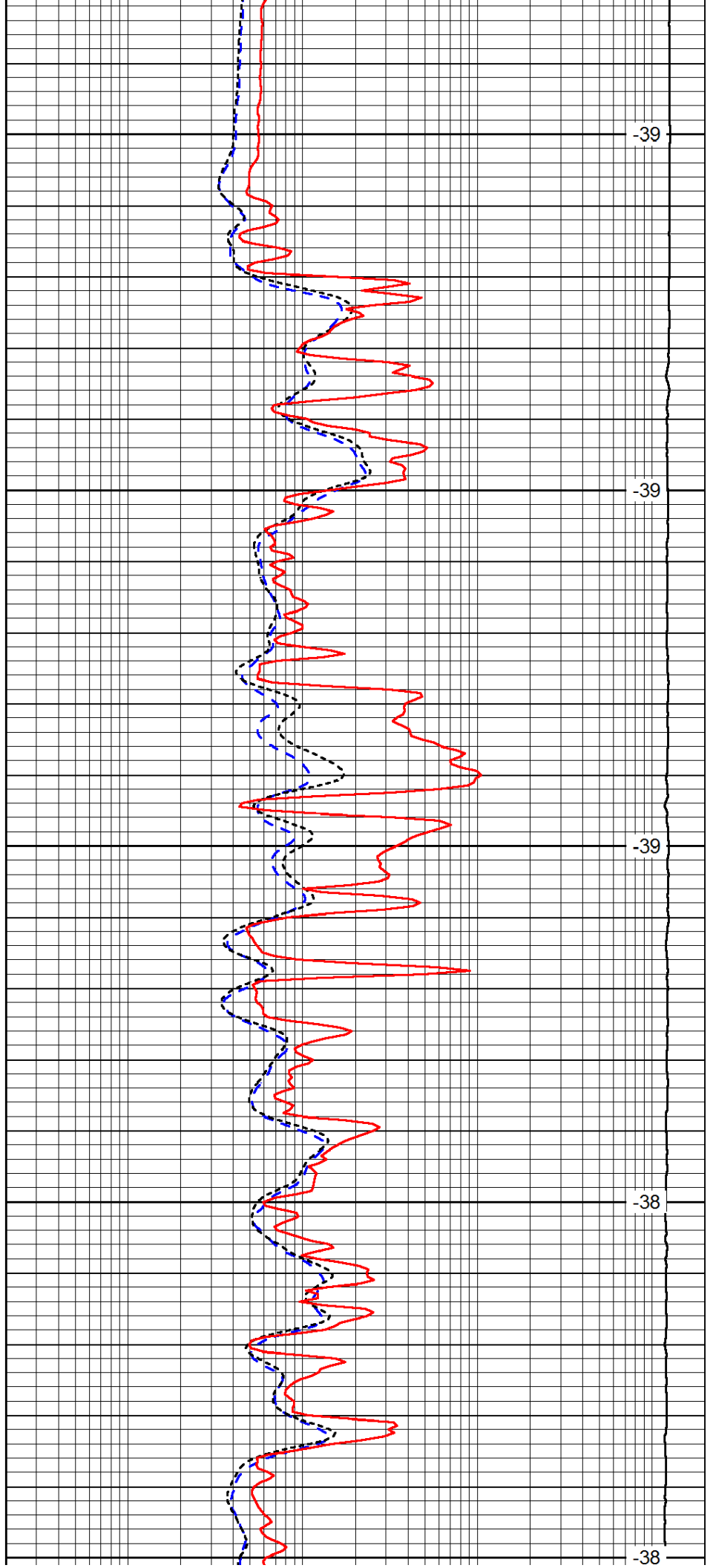
1150

1200

1250

1300

1350



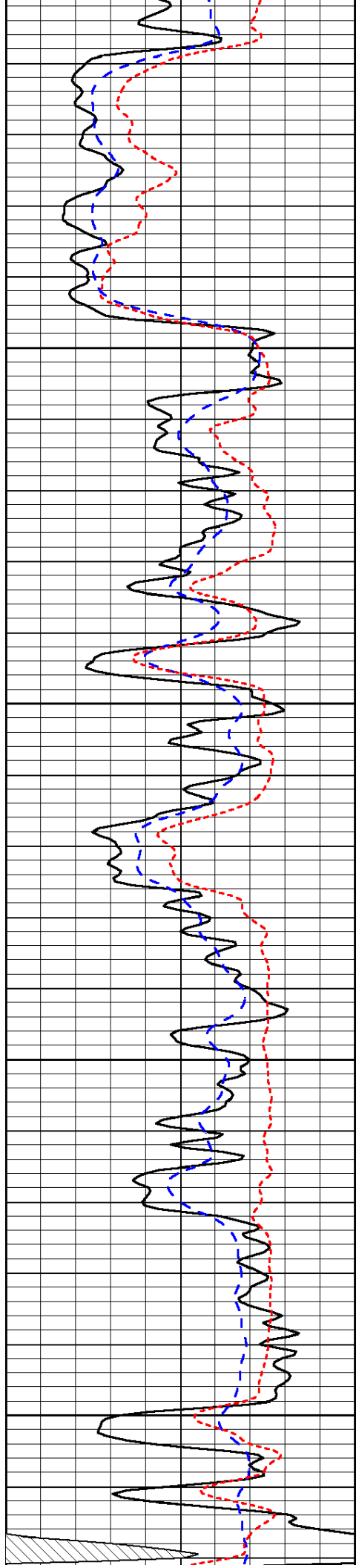
-39

-39

-39

-38

-38

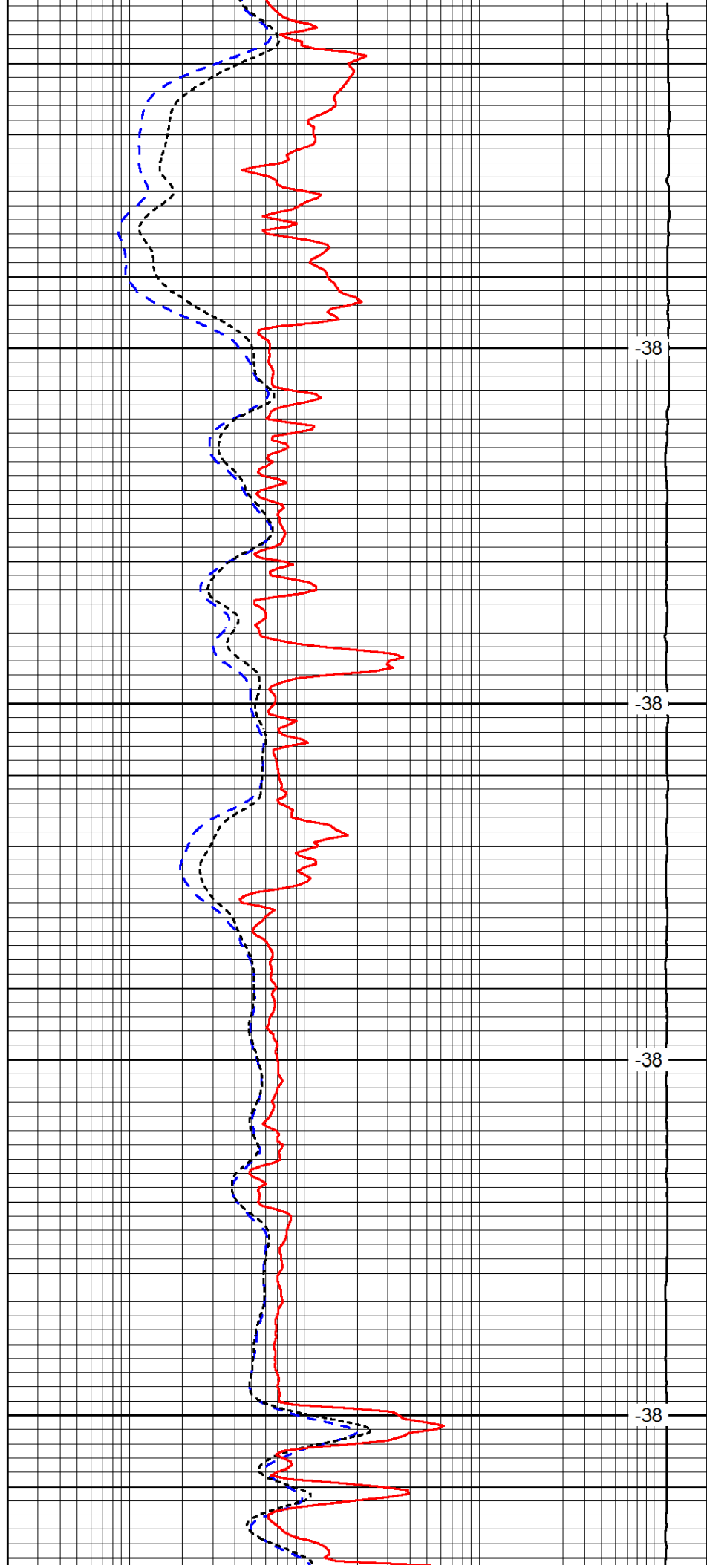


1400

1450

1500

1550

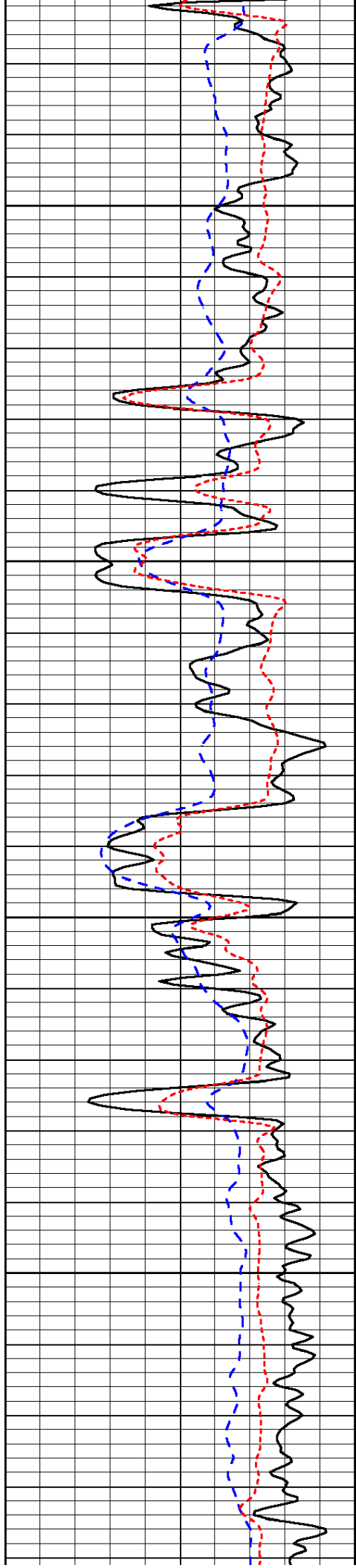


-38

-38

-38

-38

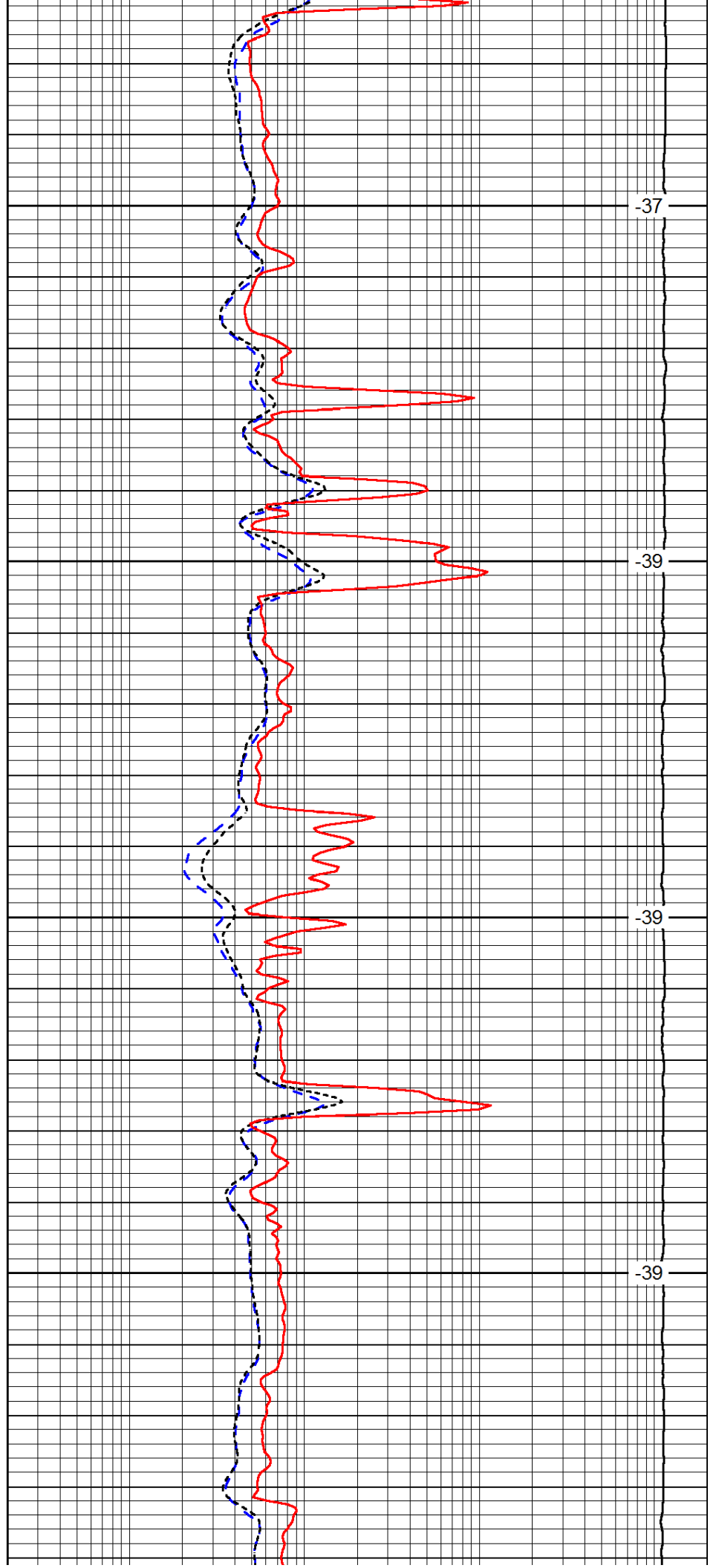


1600

1650

1700

1750

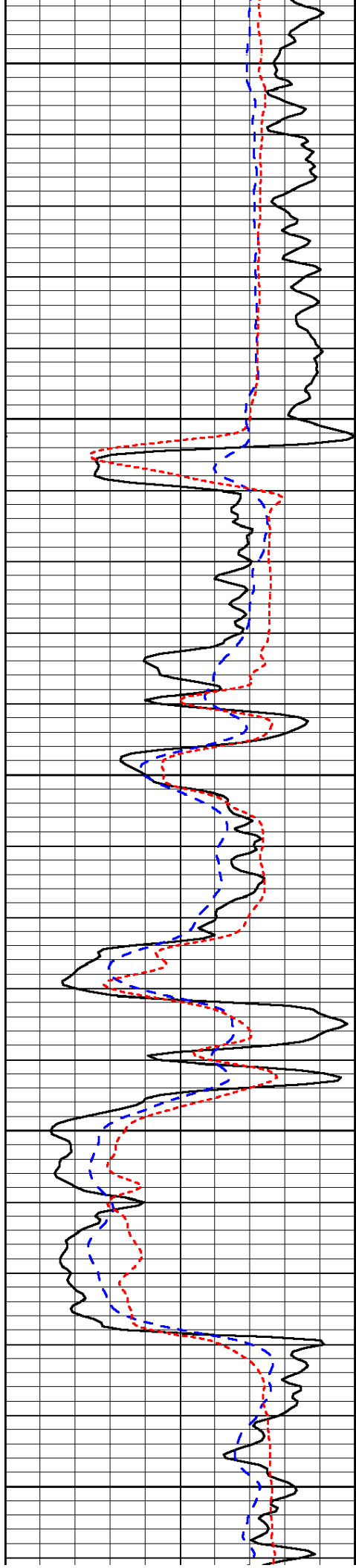


-37

-39

-39

-39



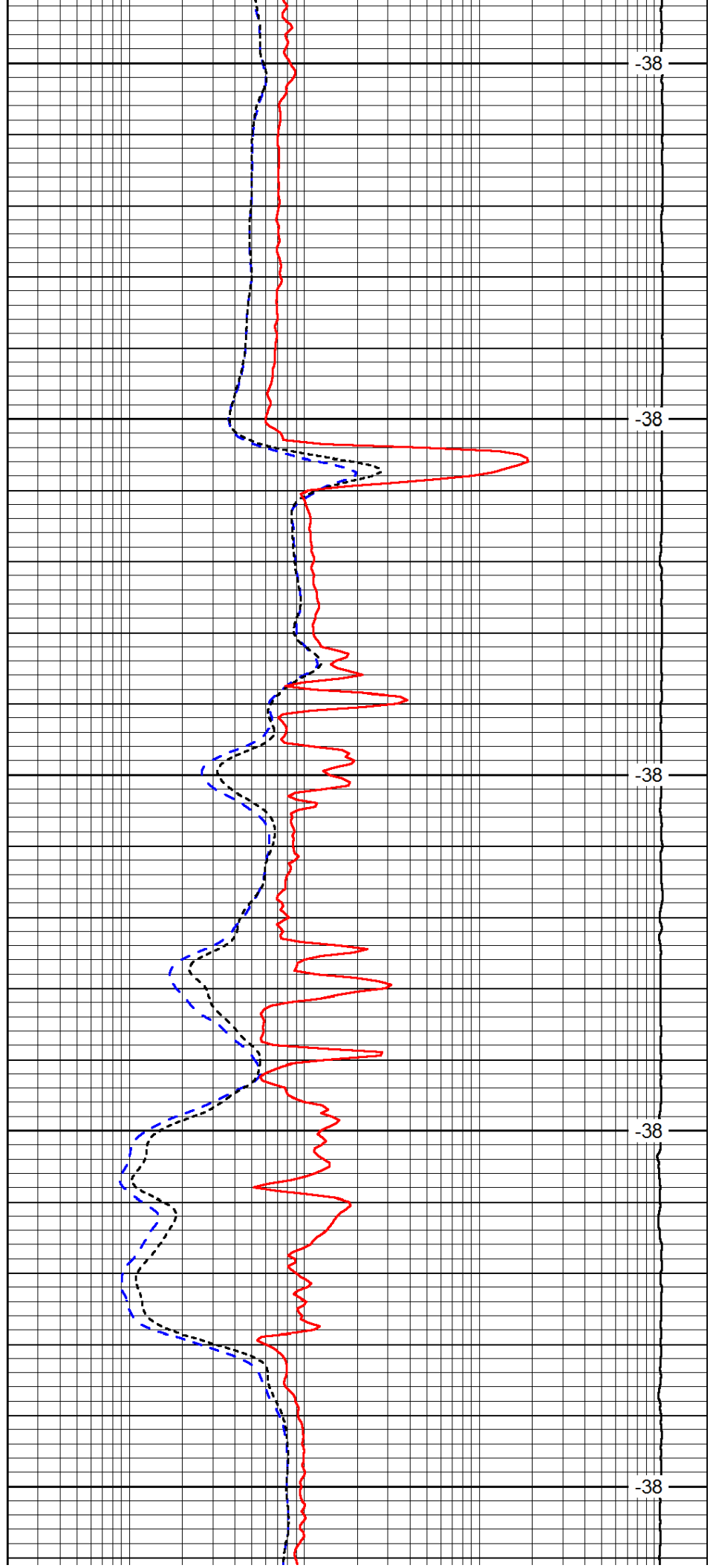
1800

1850

1900

1950

2000



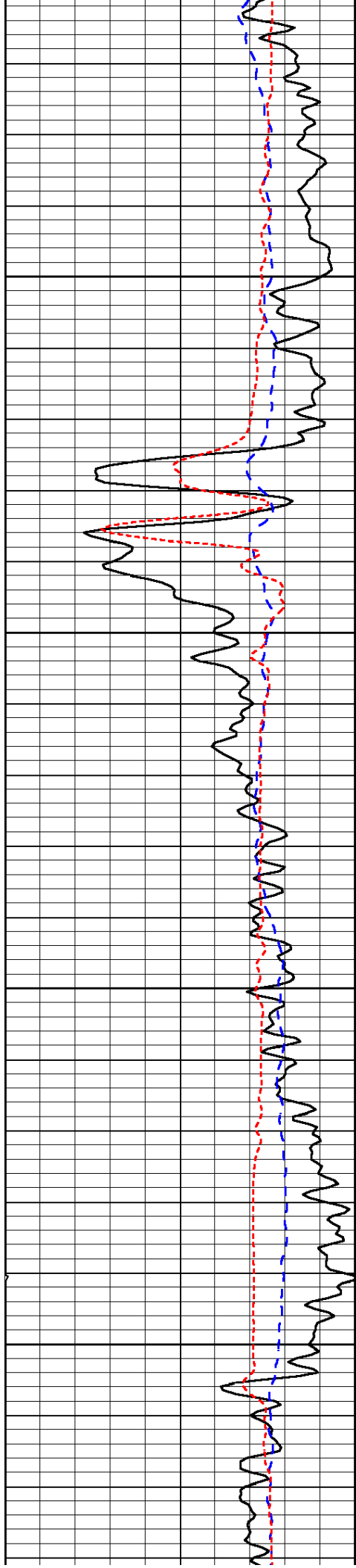
-38

-38

-38

-38

-38

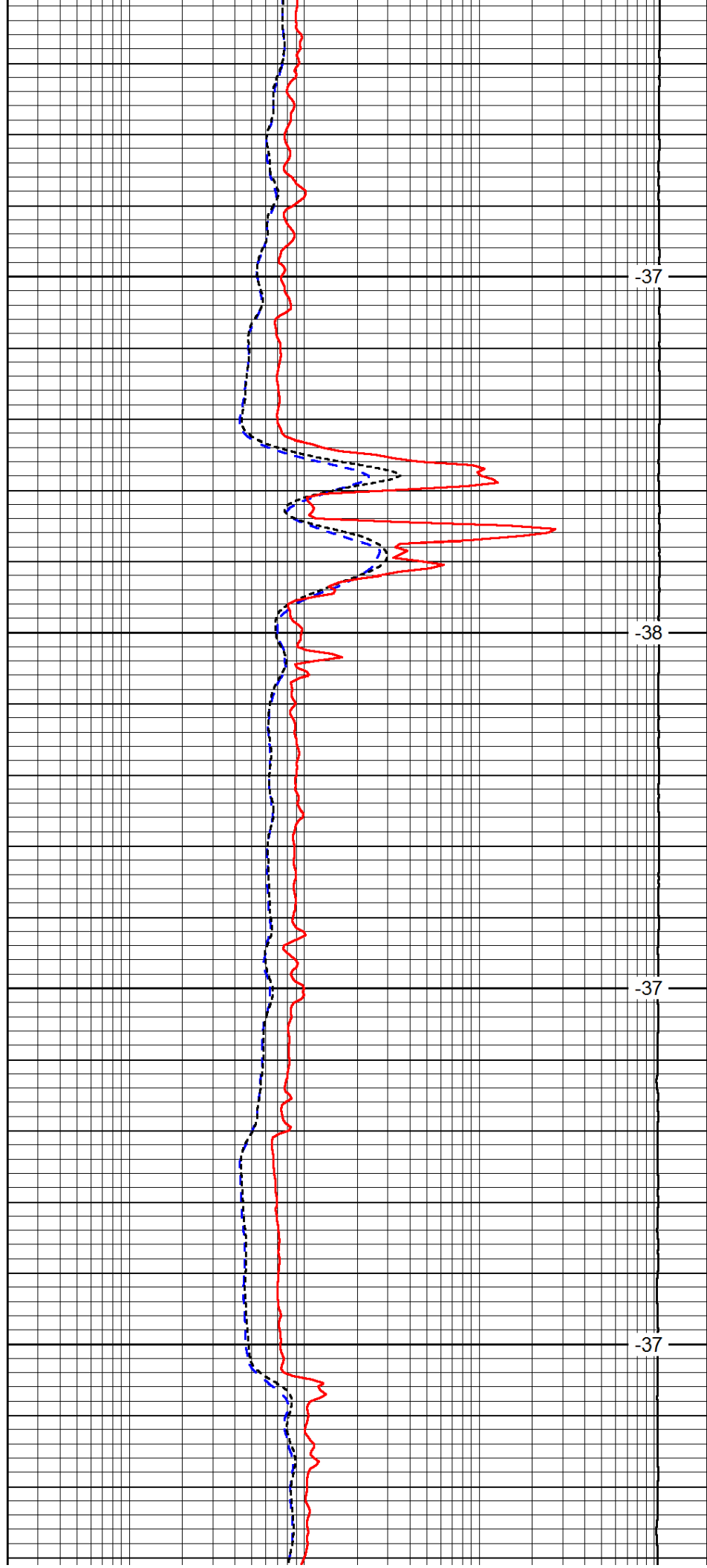


2050

2100

2150

2200

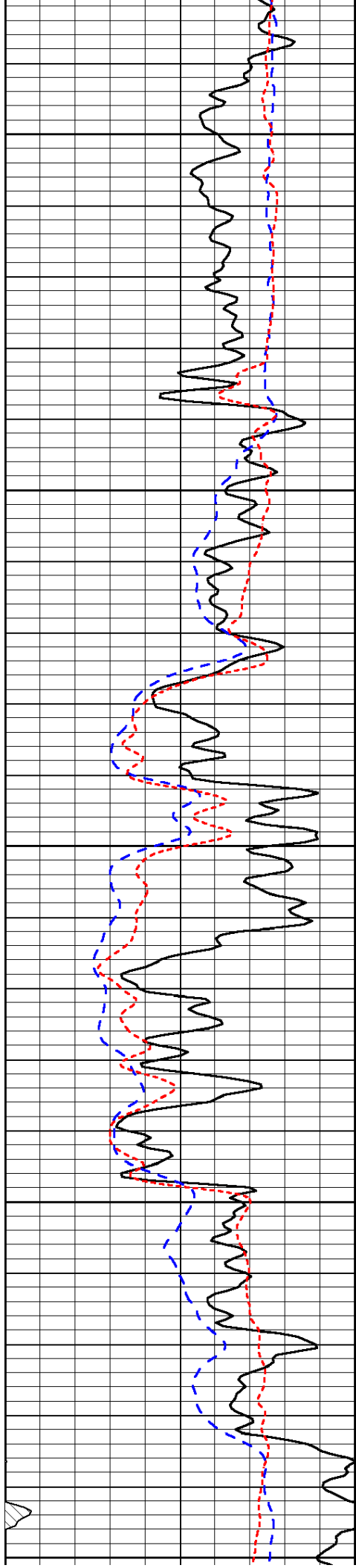


-37

-38

-37

-37



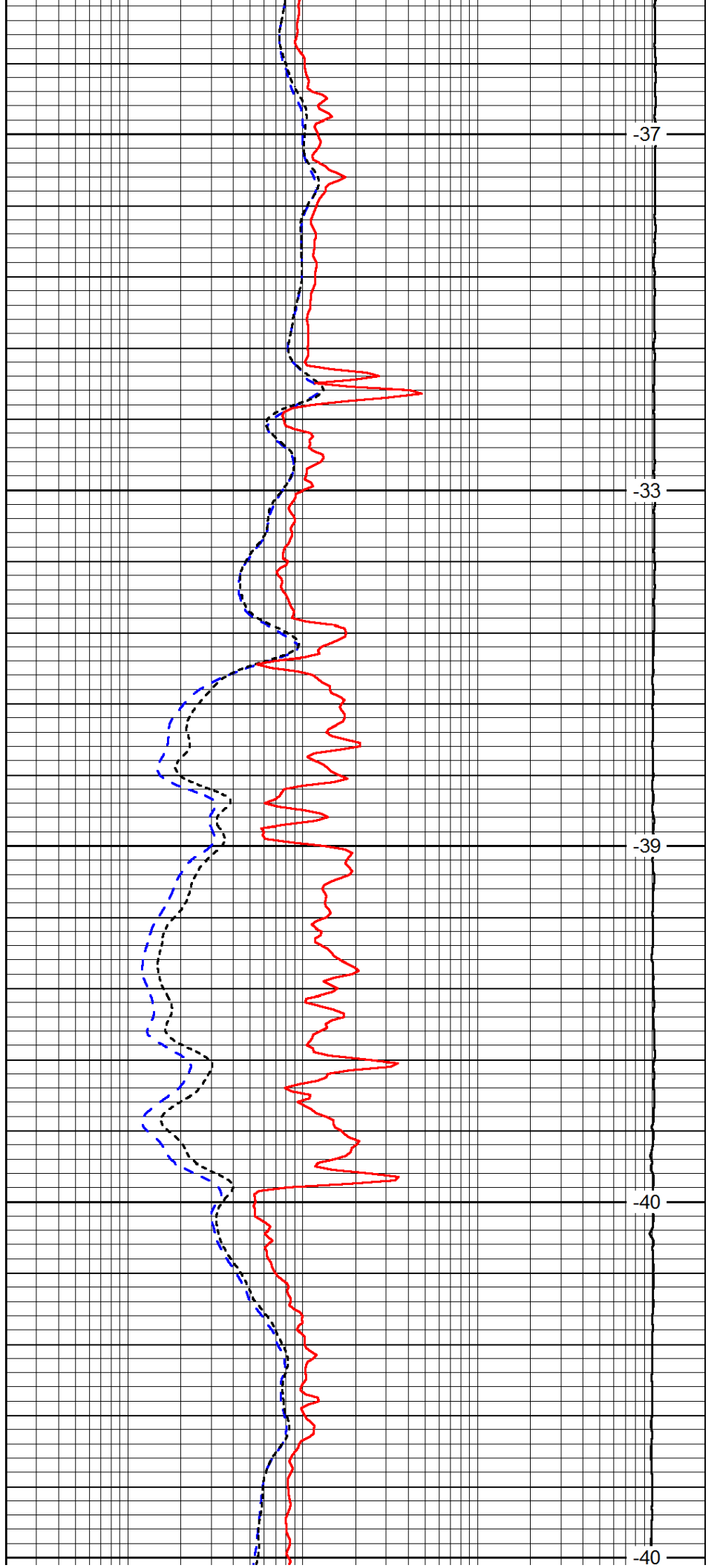
2250

2300

2350

2400

2450



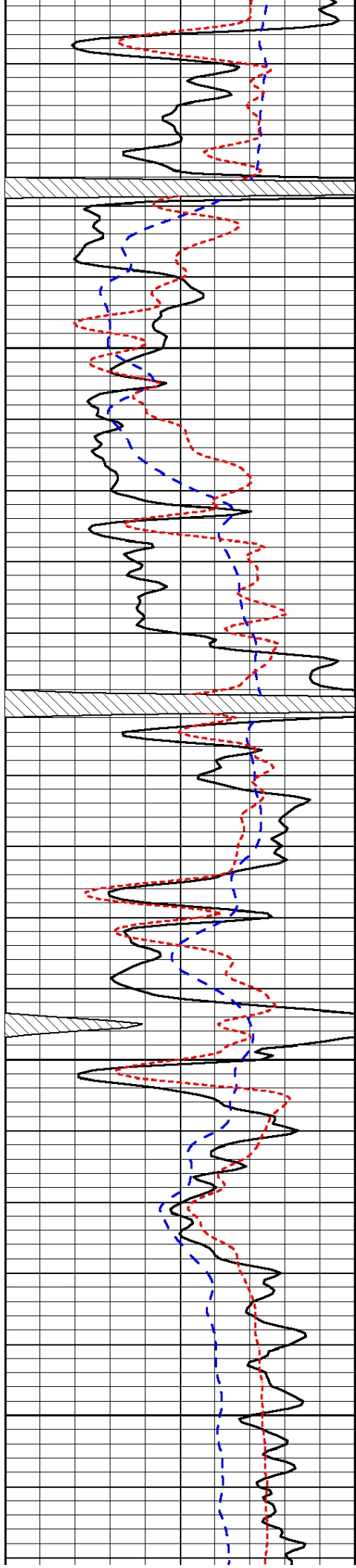
-37

-33

-39

-40

-40

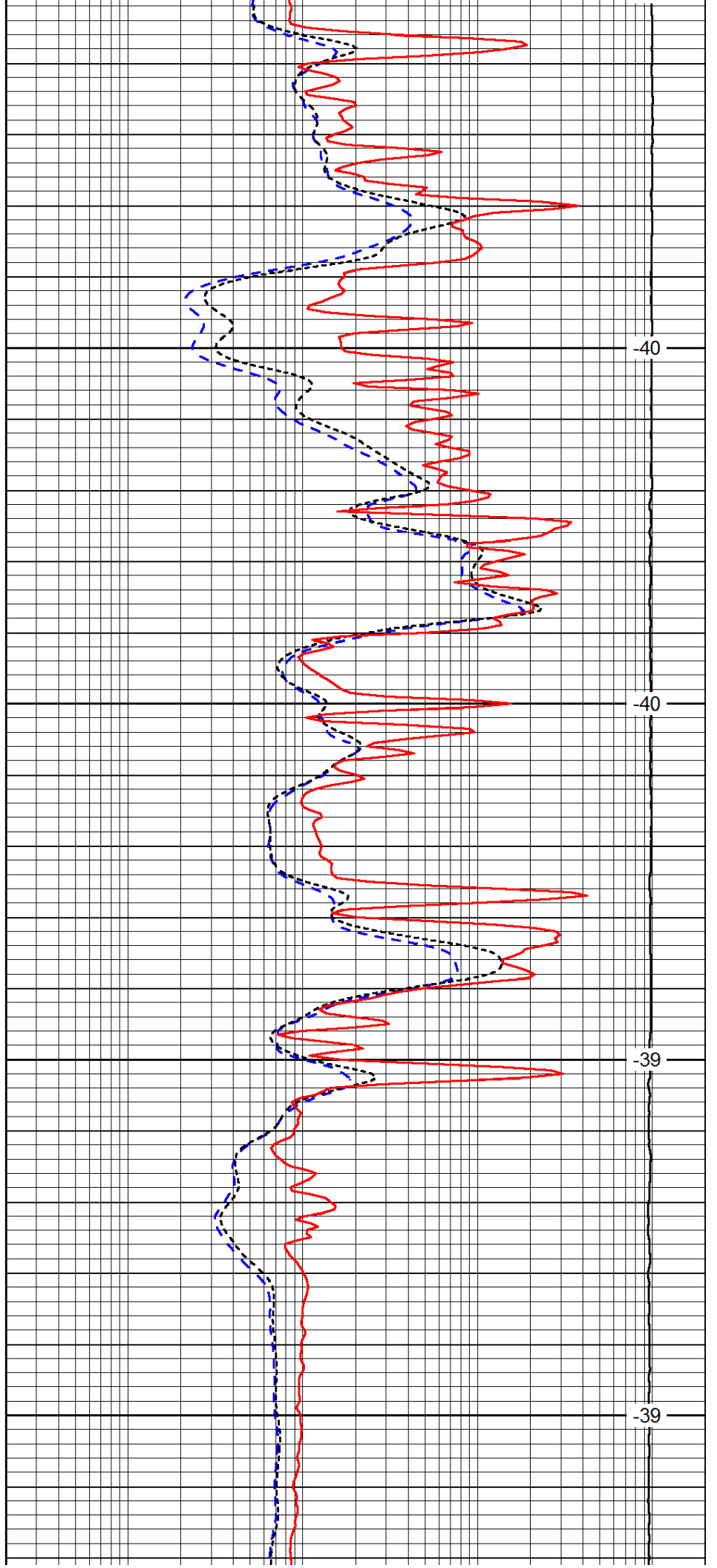


2500

2550

2600

2650

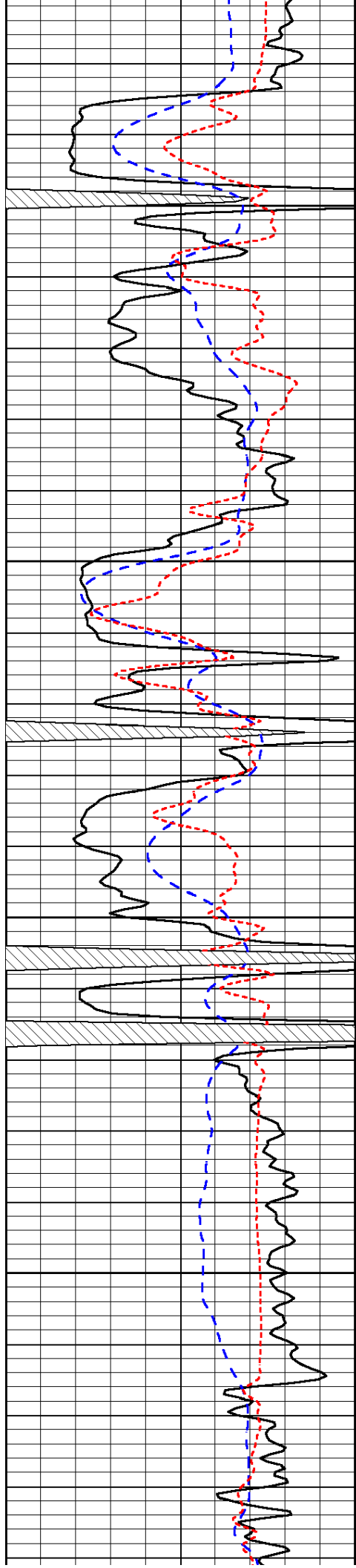


-40

-40

-39

-39

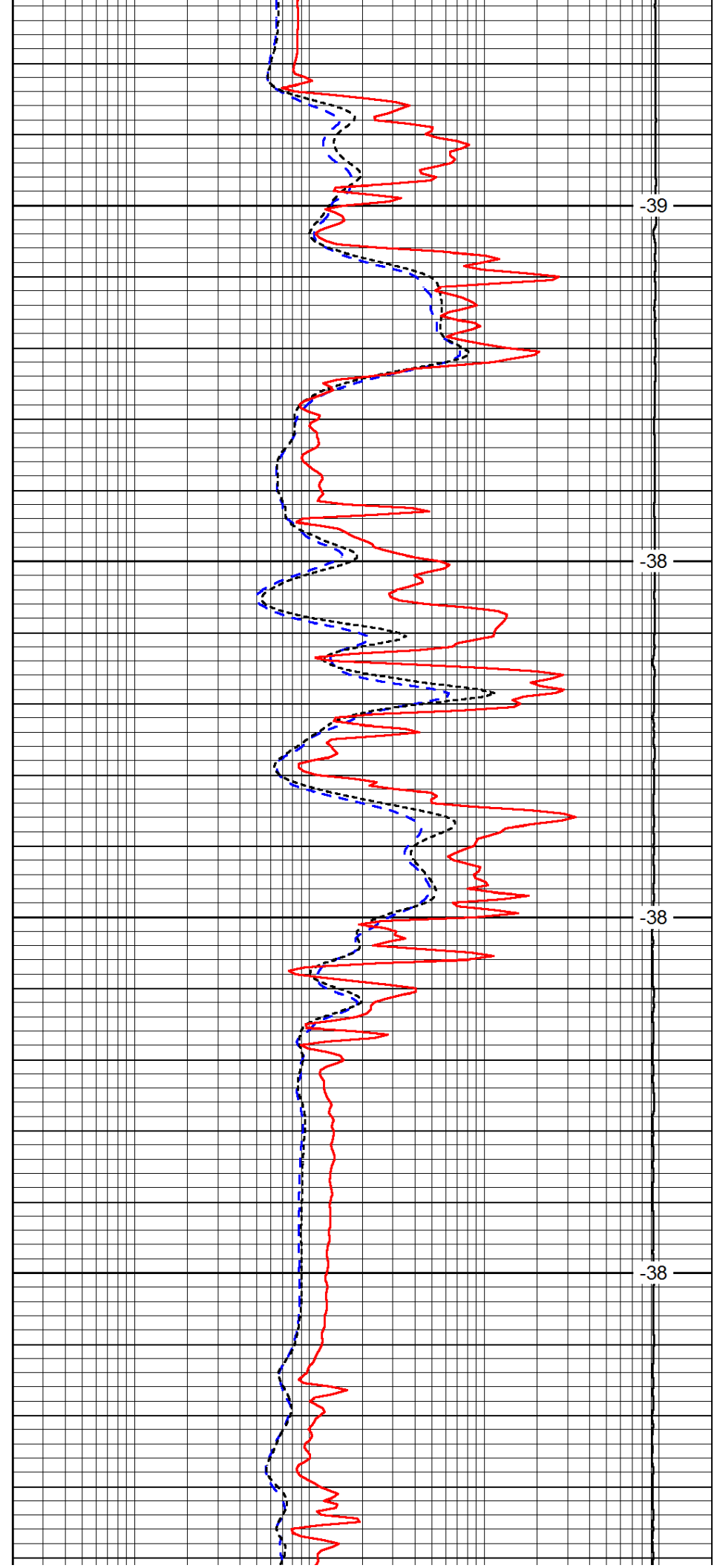


2700

2750

2800

2850

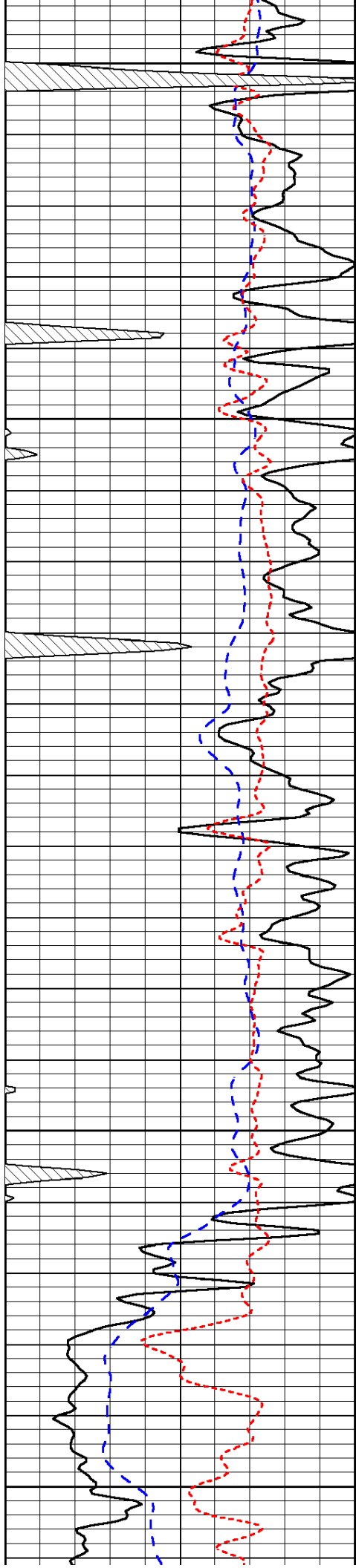


-39

-38

-38

-38



2900

2950

3000

3050

3100

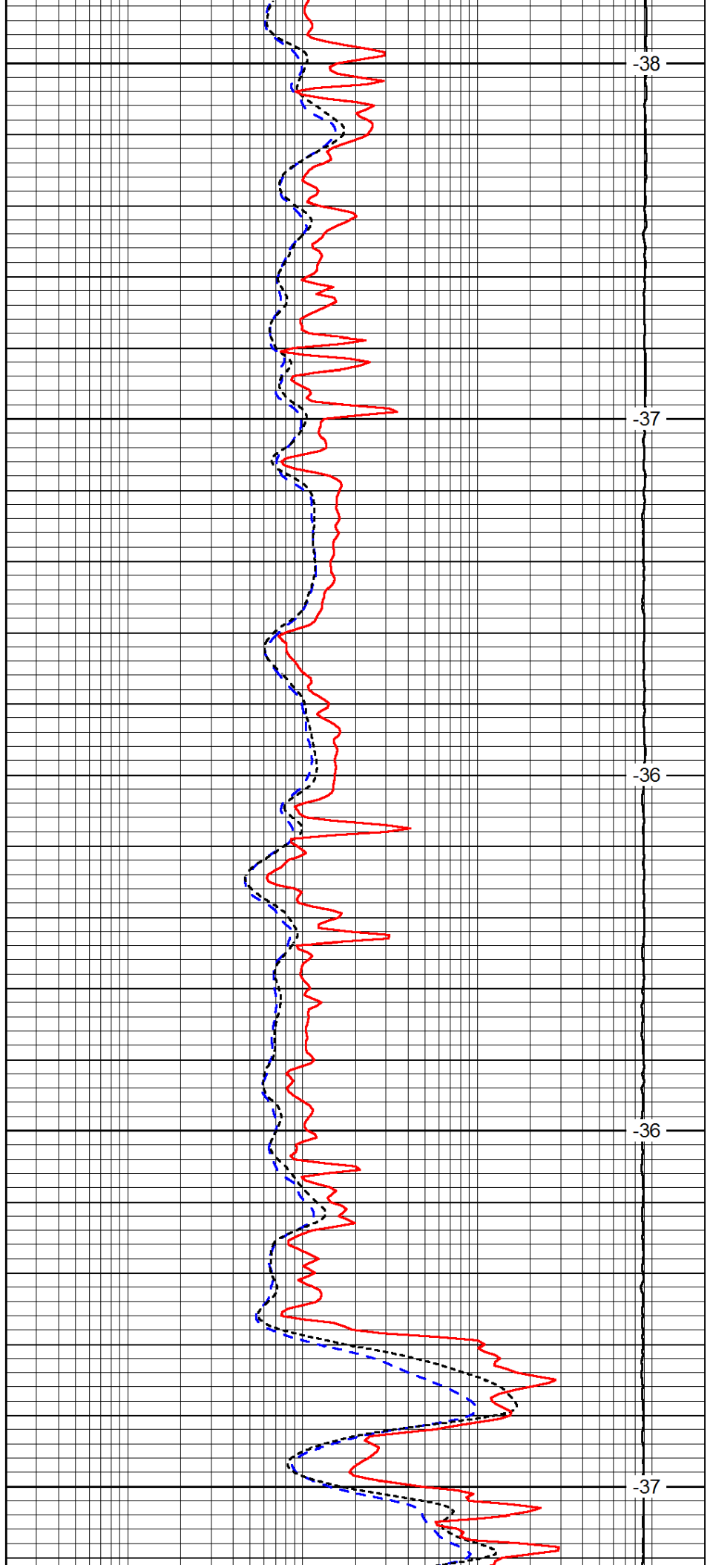
-38

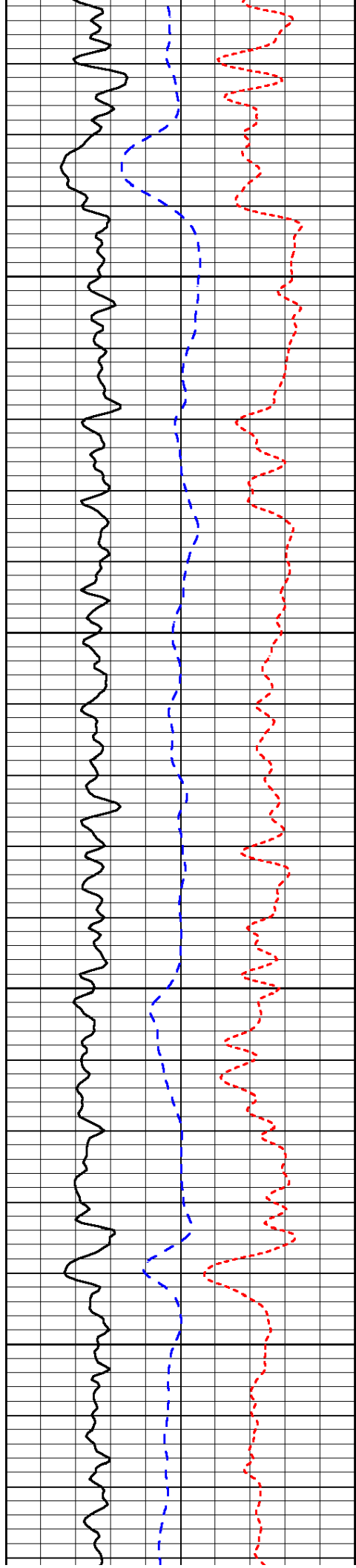
-37

-36

-36

-37



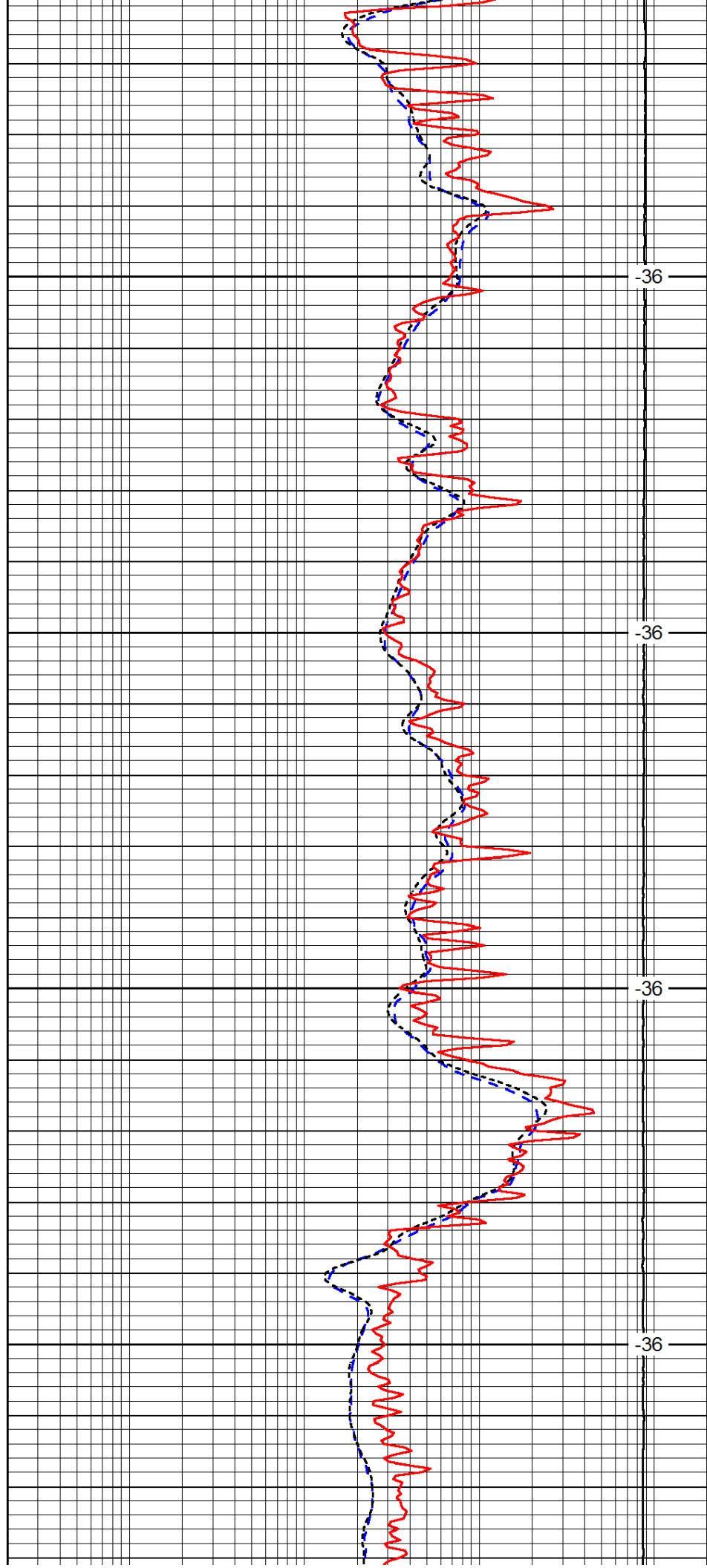


3150

3200

3250

3300

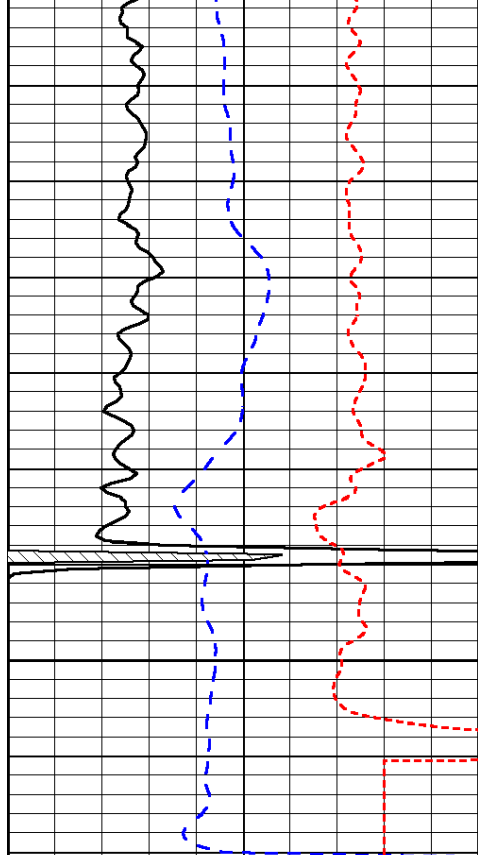


-36

-36

-36

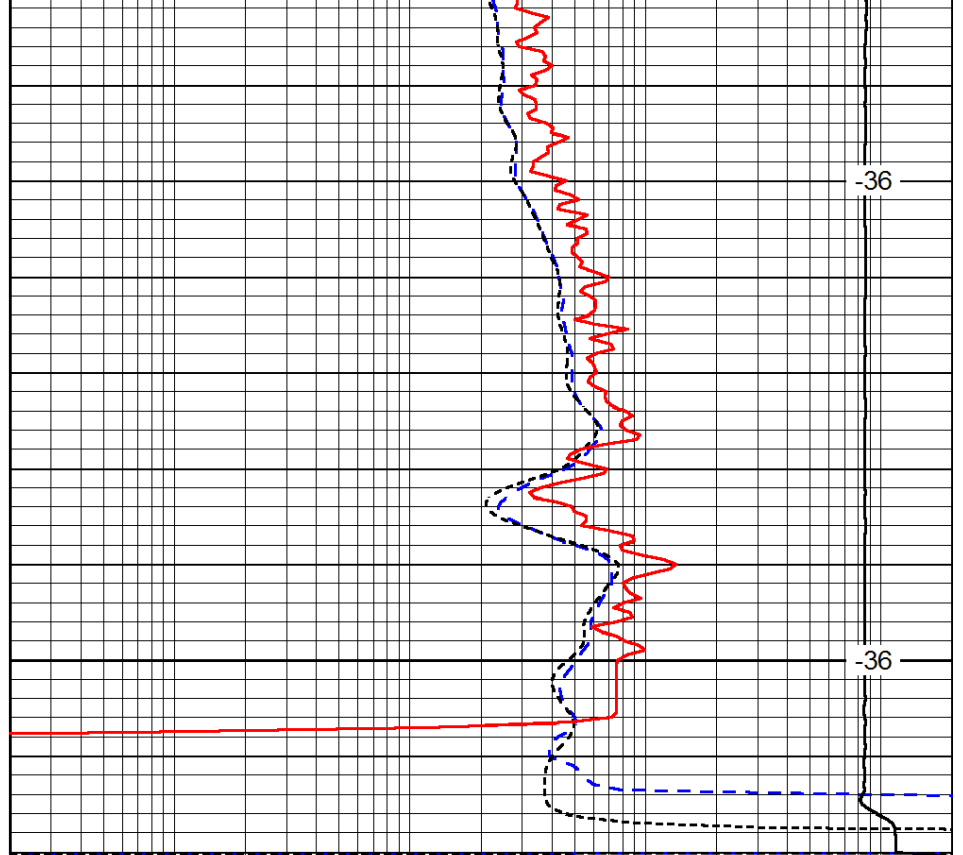
-36



0	Gamma Ray	150
-200	SP (mV)	0
-160	RxoRt	40

3350

3400



-36

-36

0.2	Deep Resistivity	2000
0.2	Medium Resistivity	2000
0.2	Shallow Resistivity	2000
15000	Line Tension	0

LSPD