



Pioneer Energy Services

## Dual Compensated Porosity Log

**Company** RJM Company  
**Well** Chris Schneider # 2  
**Field** Boyle  
**County** Barton  
**State** Kansas

**Location** 1550' FNL & 800' FWL  
 Sec: 32 Twp: 17 S Rge: 14 W

Other Services  
 DIL  
 MEL/BHCS

Permanent Datum Ground Level Elevation 1896  
 Log Measured From Kelly Bushing 7 Ft. Above Perm. Datum  
 Drilling Measured From Kelly Bushing

Elevation  
 K.B. 1903  
 D.F. G.I.L. 1896

API No.	15-009-26002-00-00						
Run Number	07-20-2014	One					
Type Log	CNL / CDL						
Depth Driller	3656						
Depth Logger	3659						
Bottom Logged Interval	3638						
Top Logged Interval	3000						
Type Fluid In Hole	Chemical						
Salinity, PPM CL	5000						
Density	9.4						
Level	Full						
Max. Rec. Temp. F	113						
Operating Rig Time	4 Hours						
Equipment -- Location	17 Hays						
Recorded By	Y. Ruiz						
Witnessed By	Jim Musgrove						
Borehole Record		Casing Record					
Run No	Bit	From	To	Size	Wgt.	From	To
One	12.25	00	887	8.625	23#	00	887
Two	7.875	887					

<<< Fold Here >>>

All interpretations are opinions based on inferences from electrical or other measurements and we cannot and do not guarantee the accuracy or correctness of any interpretation, and we shall not, except in the case of gross or willful negligence on our part, be liable or responsible for any loss, costs, damages, or expenses incurred or sustained by anyone resulting from any interpretation made by any of our officers, agents or employees. These interpretations are also subject to our general terms and conditions set out in our current Price Schedule.

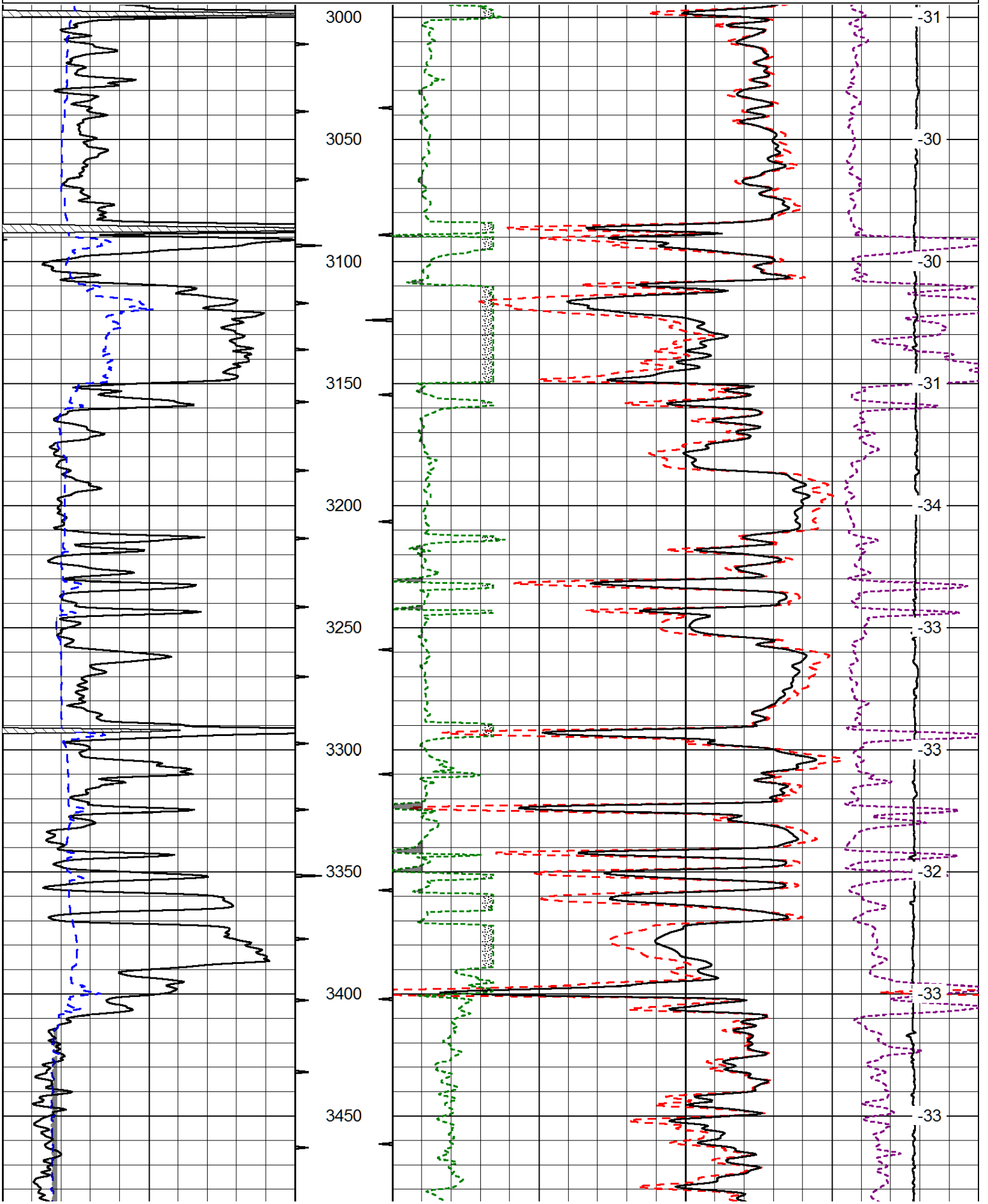
**Comments**

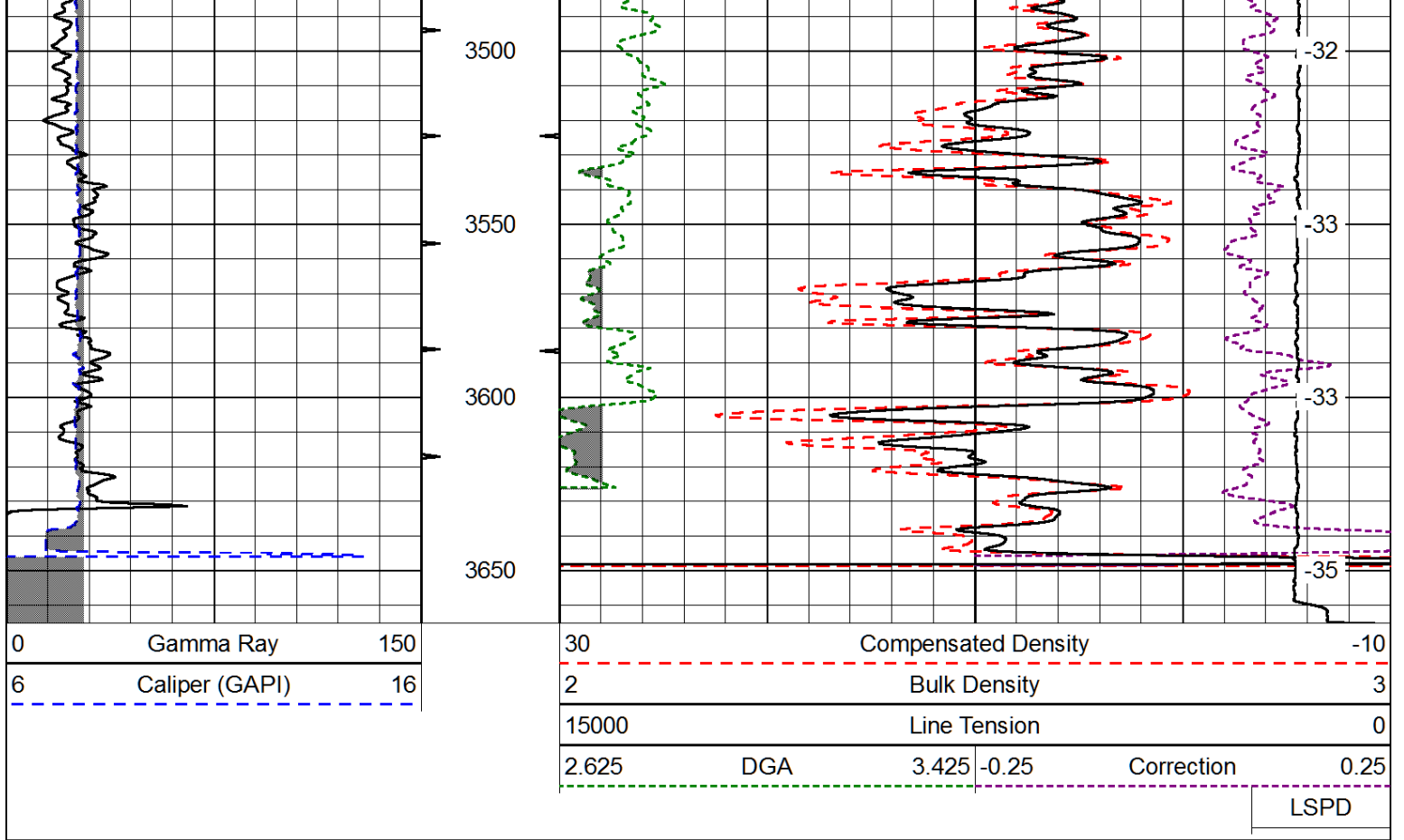
Thank you for using Log-Tech, Inc.  
 (785) 625-3858  
  
 Olmitz Kansas,  
 Hwy 4 and Hwy 281, 3 West, 1/2 South,  
 East into

Database File: rjm\_chris\_schneider\_2\_hd.db  
 Dataset Pathname: DIL/rjmstk  
 Presentation Format: cdl  
 Dataset Creation: Sun Jul 20 14:47:02 2014  
 Charted by: Depth in Feet scaled 1:600

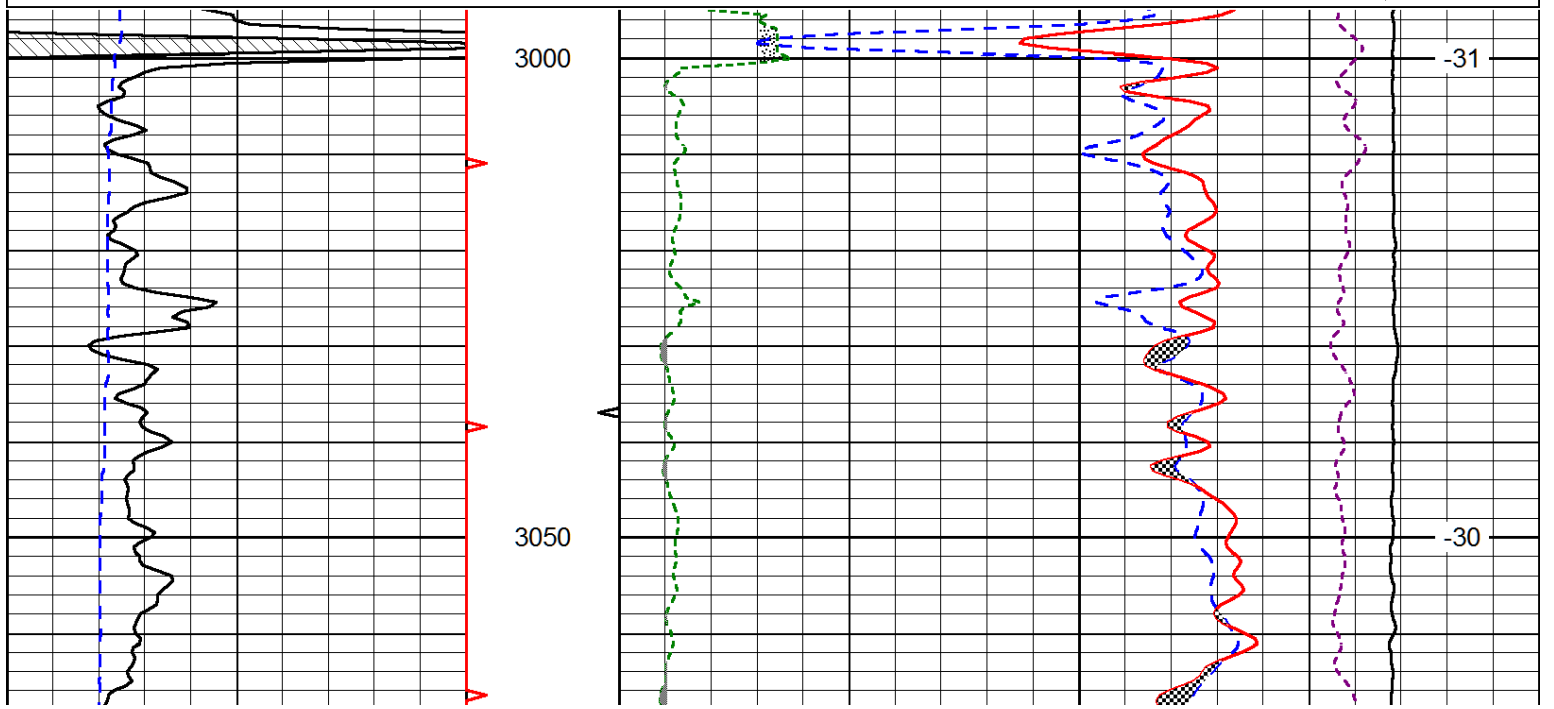
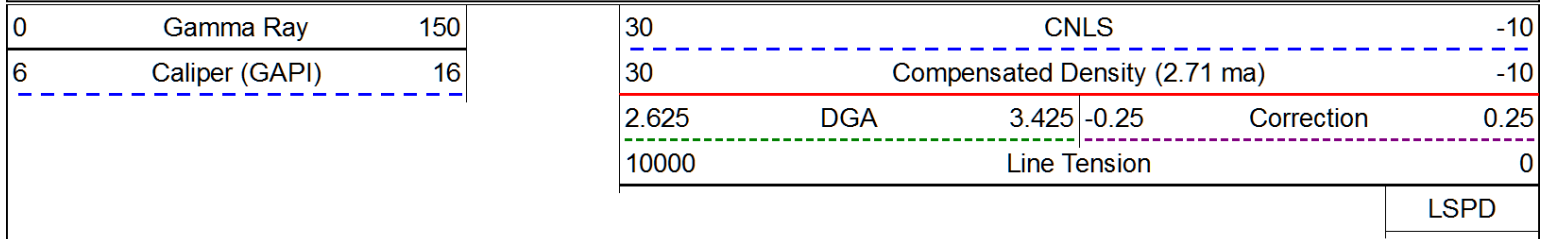
0	Gamma Ray	150
6	Caliper (GAPI)	16

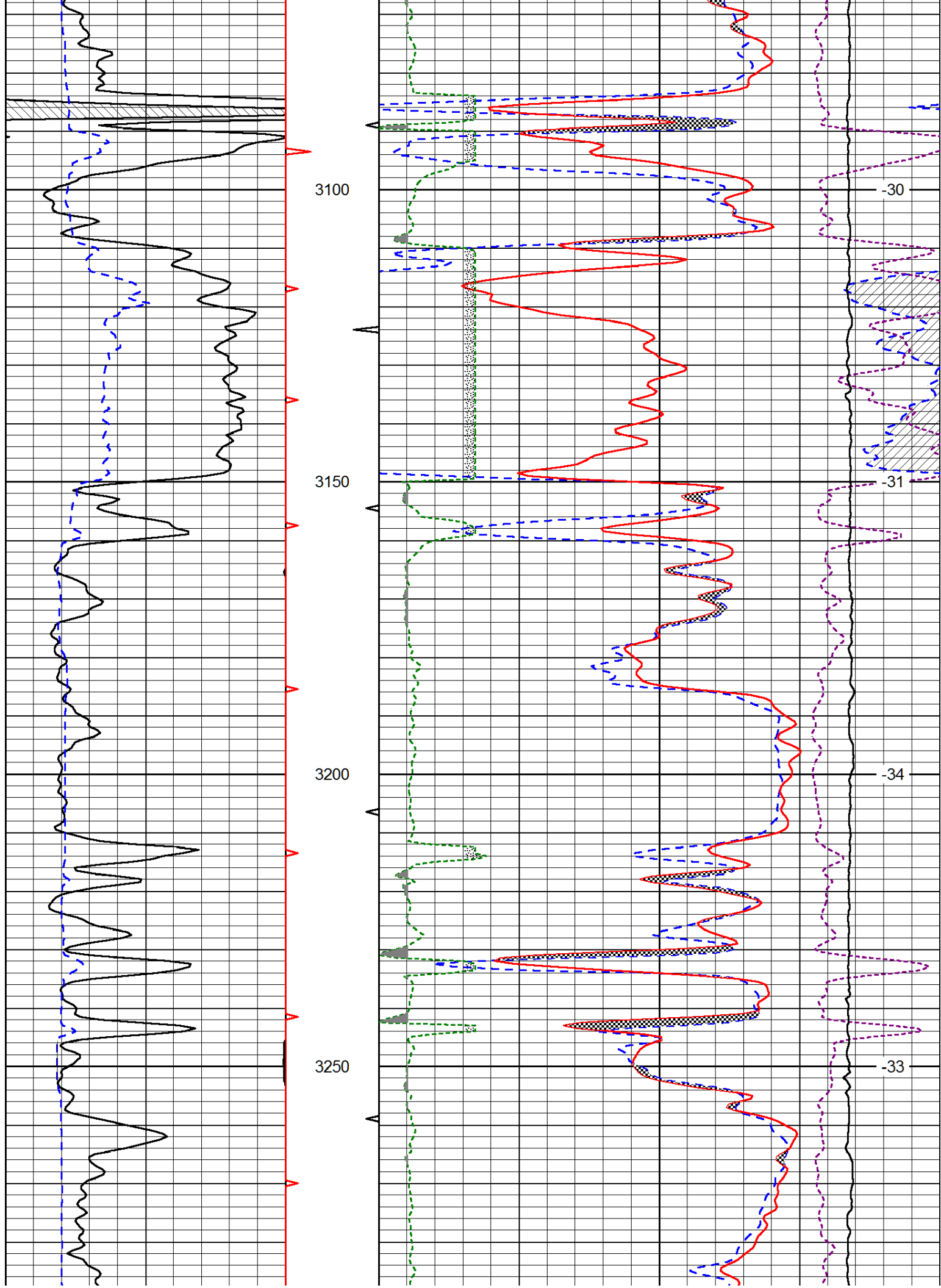
30	Compensated Density		-10
2	Bulk Density		3
15000	Line Tension		0
2.625	DGA	3.425	-0.25
			Correction
			0.25
LSPD			

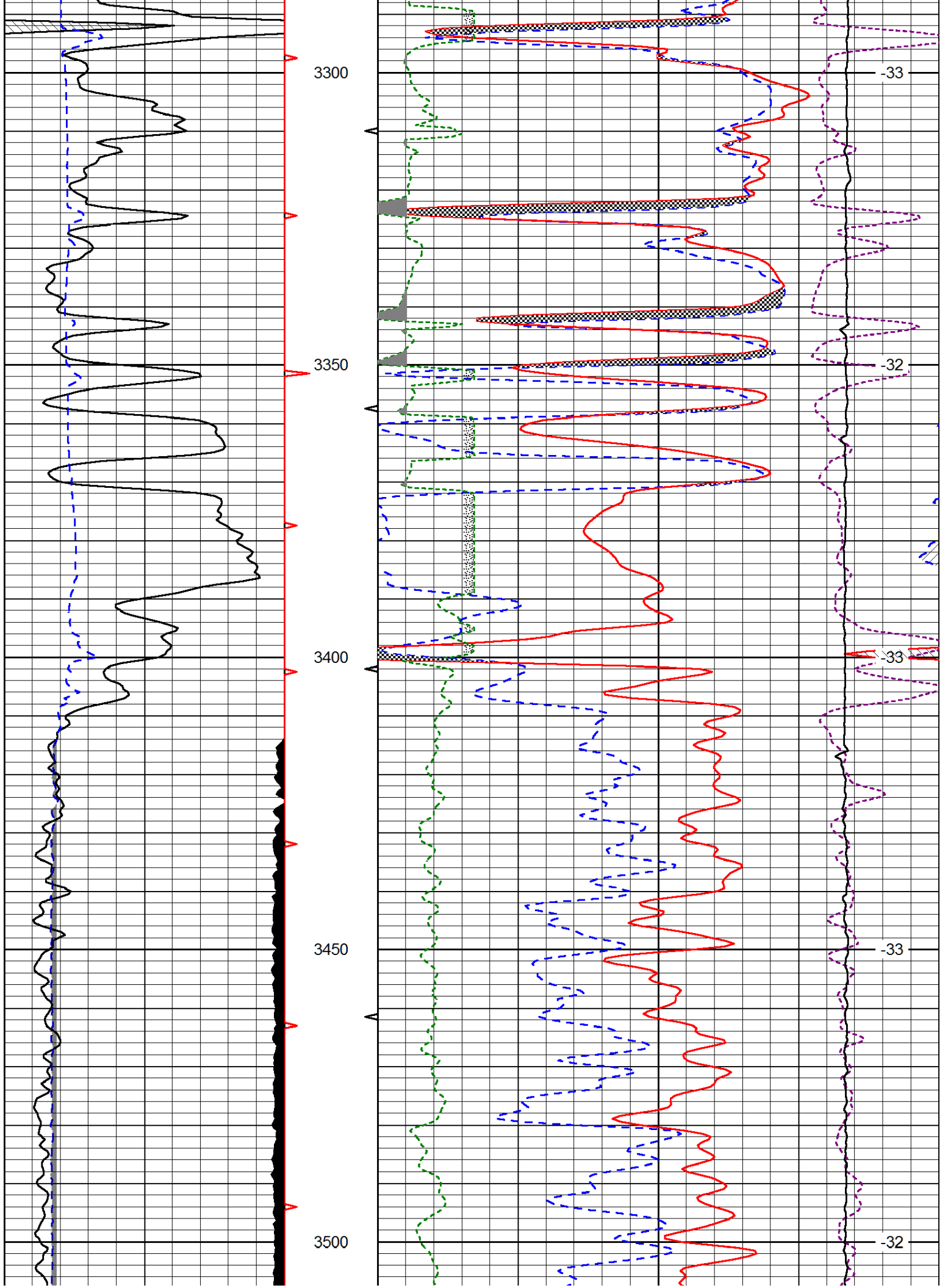


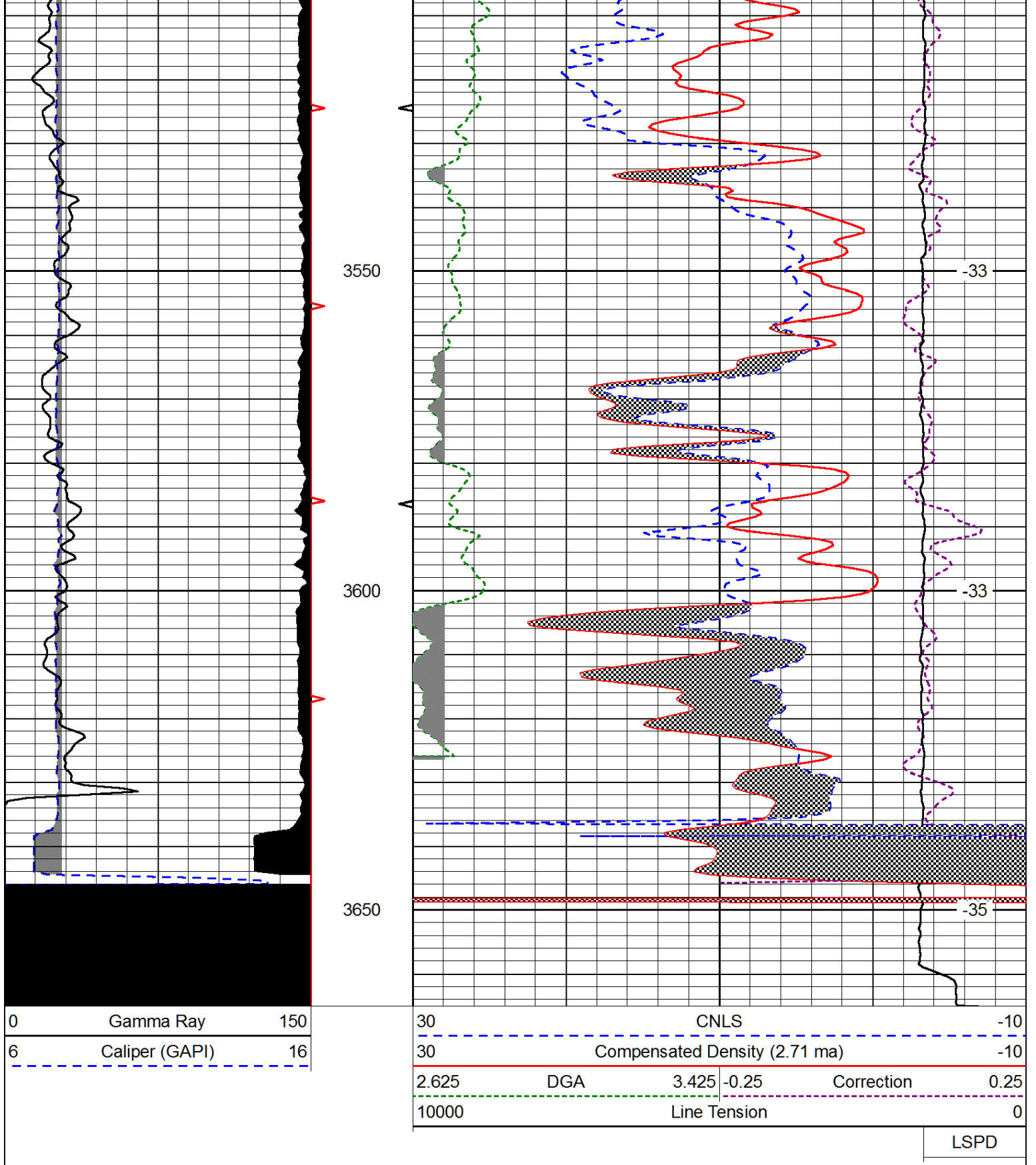


Database File: rjm\_chris\_schneider\_2\_hd.db  
 Dataset Pathname: DIL/rjmstk  
 Presentation Format: cndlspec  
 Dataset Creation: Sun Jul 20 14:47:02 2014  
 Charted by: Depth in Feet scaled 1:240









LSPD