



Pioneer Energy Services

Dual Induction Log

API No.	15-009-26002-00-00	
Company	RJM Company	
Well	Chris Schneider # 2	
Field	Boyle	
County	Barton	State
Location	1550' FNL & 800' FWL	
Sec: 32	Twp: 17 S	Rge: 14 W
Permanent Datum	Ground Level	Elevation 1896
Log Measured From	Kelly Bushing	7 Ft. Above Perm. Datum
Drilling Measured From	Kelly Bushing	
		Other Services CNL/CDL MEL/BHCS
		Elevation K.B. 1903 D.F. 1896 G.L. 1896

Date	07-20-2014
Run Number	One
Depth Driller	3656
Depth Logger	3659
Bottom Logged Interval	3658
Top Log Interval	850
Casing Driller	8.625 @ 887
Casing Logger	887
Bit Size	7.875
Type Fluid in Hole	Chemical
Salinity, ppm CL	5000
Density / Viscosity	9.4 51
pH / Fluid Loss	9.5 8.8
Source of Sample	Flowline
Rm @ Meas. Temp	0.65 @ 90
Rmf @ Meas. Temp	0.49 @ 90
Rmc @ Meas. Temp	0.88 @ 90
Source of Rmf / Rmc	Charts
Rm @ BHT	0.52 @ 113
Operating Rig Time	4 Hours
Max Rec. Temp. F	113
Equipment Number	17
Location	Hays
Recorded By	Y. Ruiz
Witnessed By	Jim Musgrove

<<< Fold Here >>>

All interpretations are opinions based on inferences from electrical or other measurements and we cannot and do not guarantee the accuracy or correctness of any interpretation, and we shall not, except in the case of gross or willful negligence on our part, be liable or responsible for any loss, costs, damages, or expenses incurred or sustained by anyone resulting from any interpretation made by any of our officers, agents or employees. These interpretations are also subject to our general terms and conditions set out in our current Price Schedule.

Comments

Thank you for using Log-Tech, Inc.
 (785) 625-3858
 Olmitz Kansas,
 Hwy 4 and Hwy 281, 3 West, 1/2 South,
 East into

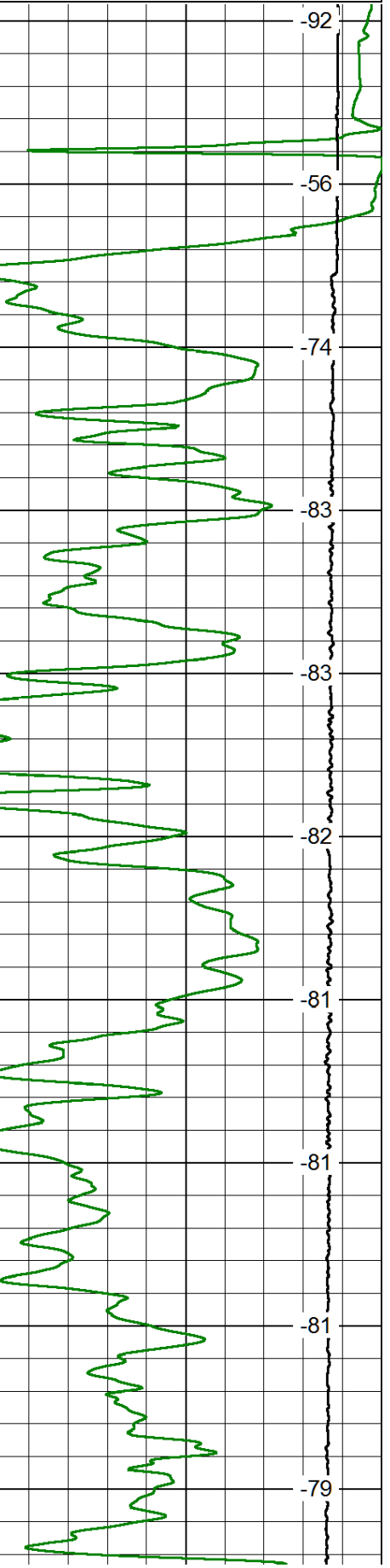
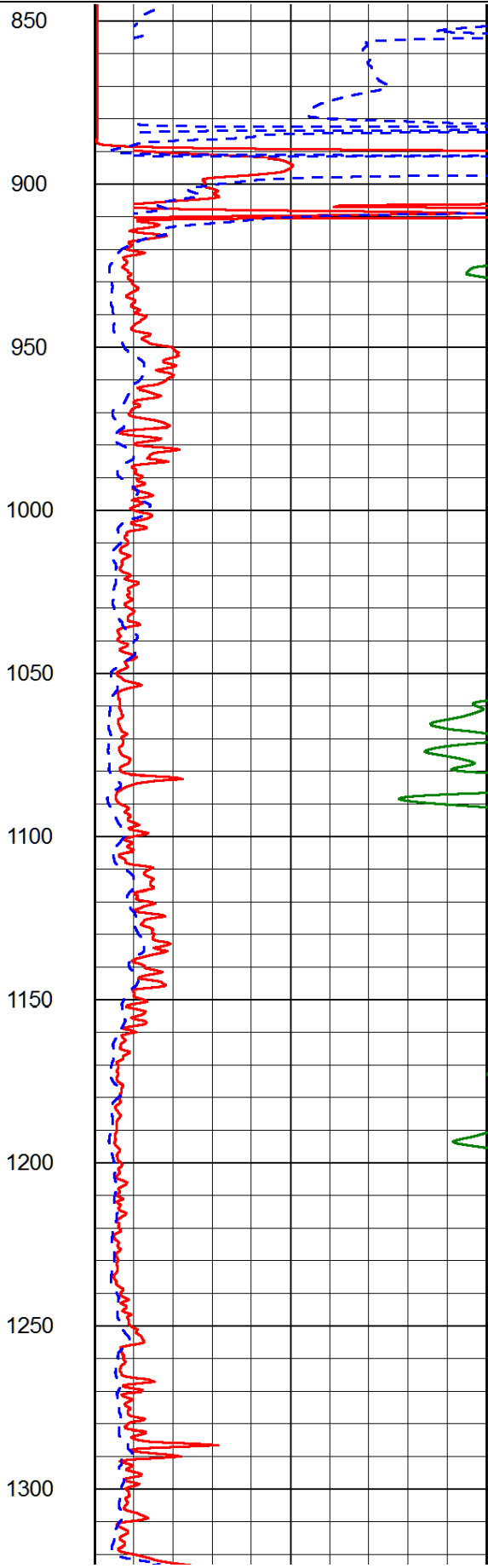
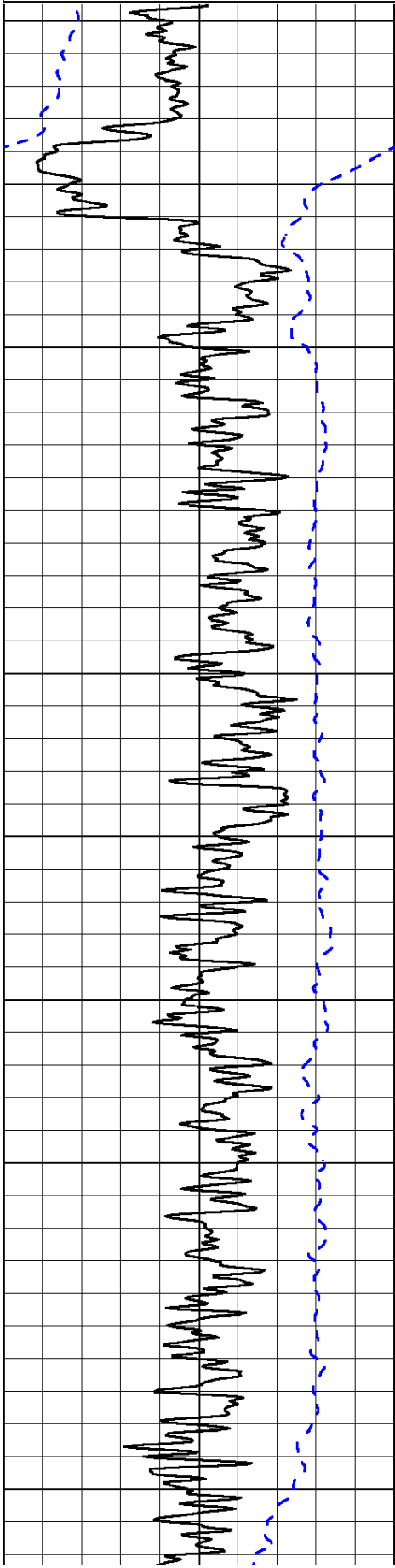
Database File: rjm_chris_schneider_2_hd.db
 Dataset Pathname: DIL/rjmstk
 Presentation Format: dil2in
 Dataset Creation: Sun Jul 20 14:47:02 2014
 Charted by: Depth in Feet scaled 1:600

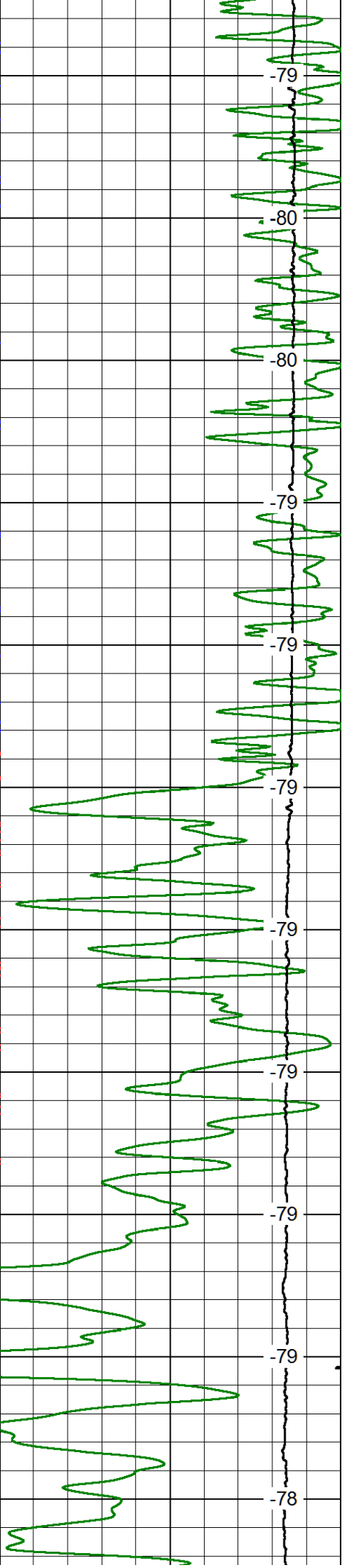
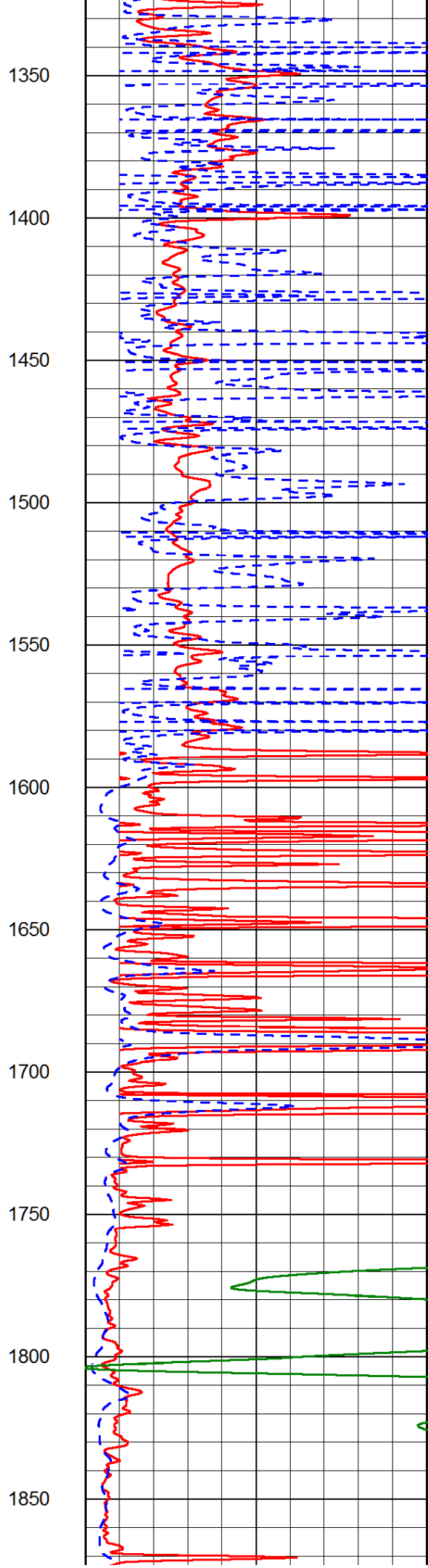
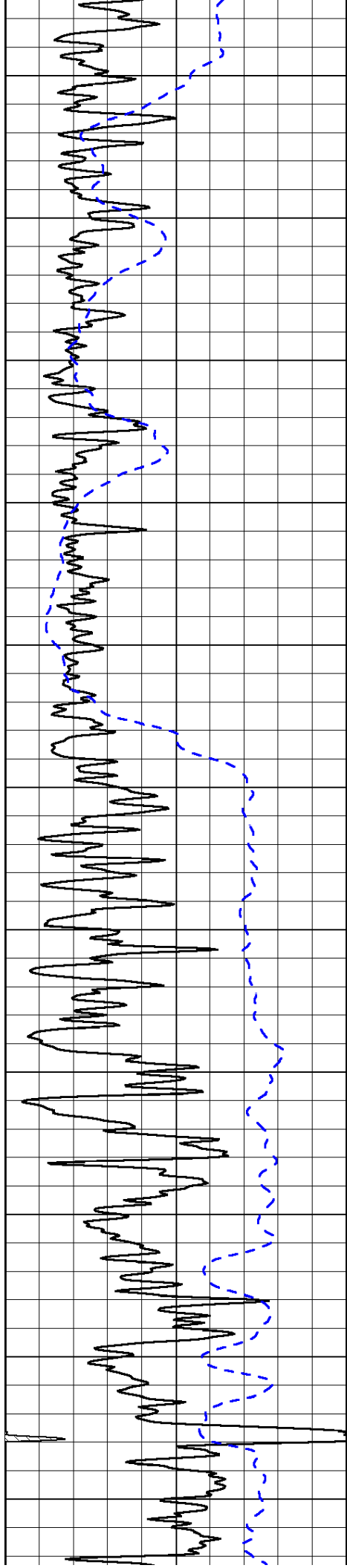
0	Gamma Ray	150
-200	SP (mV)	0

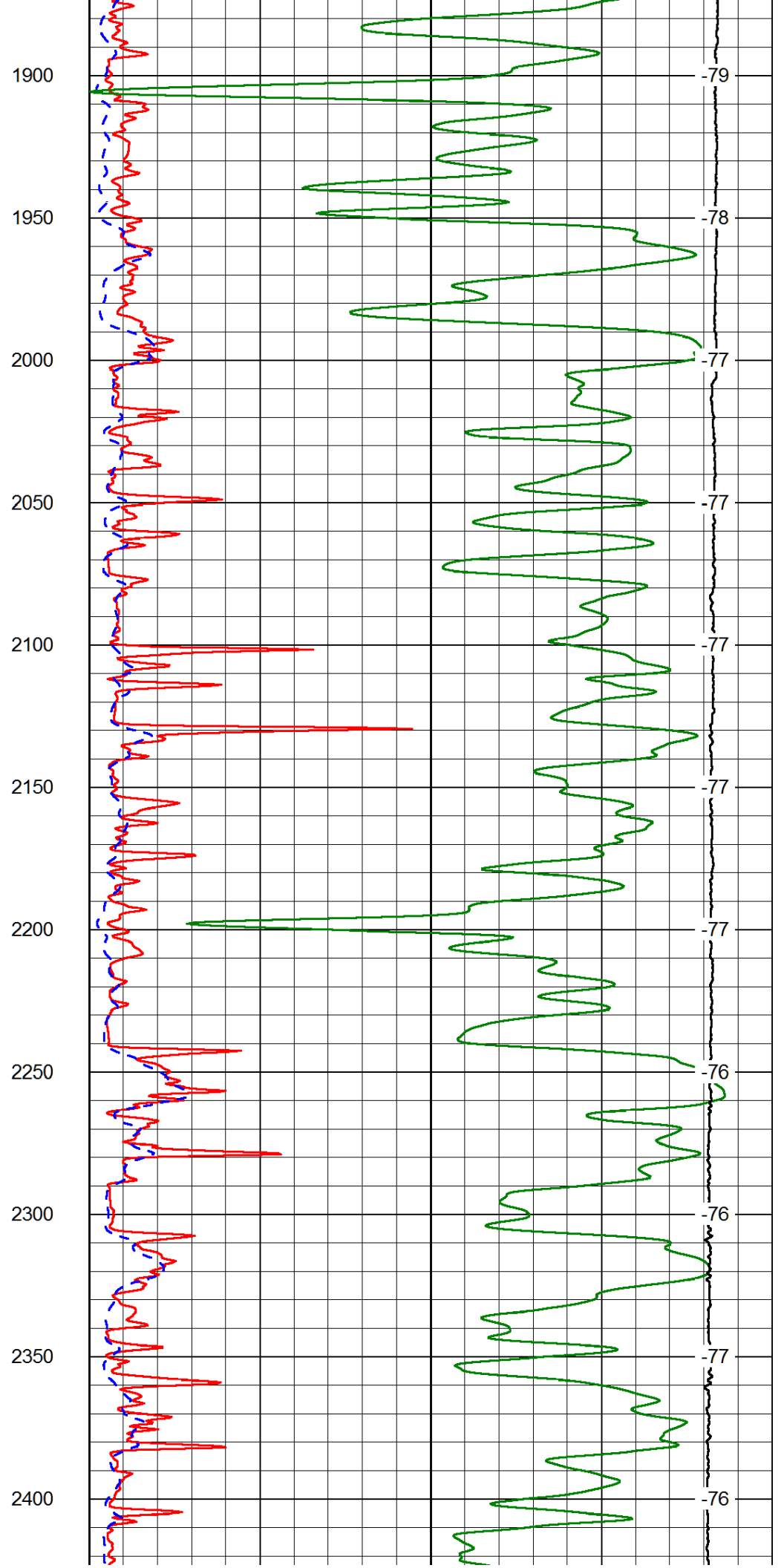
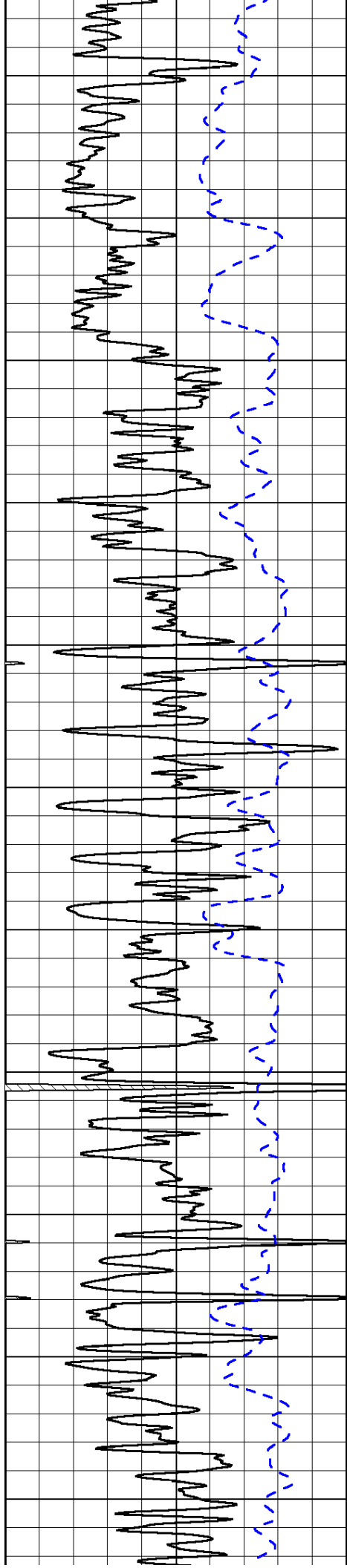
0	Shallow Resistivity	50
0	Deep Resistivity	50
1000	Conductivity	0
15000	Line Tension	0

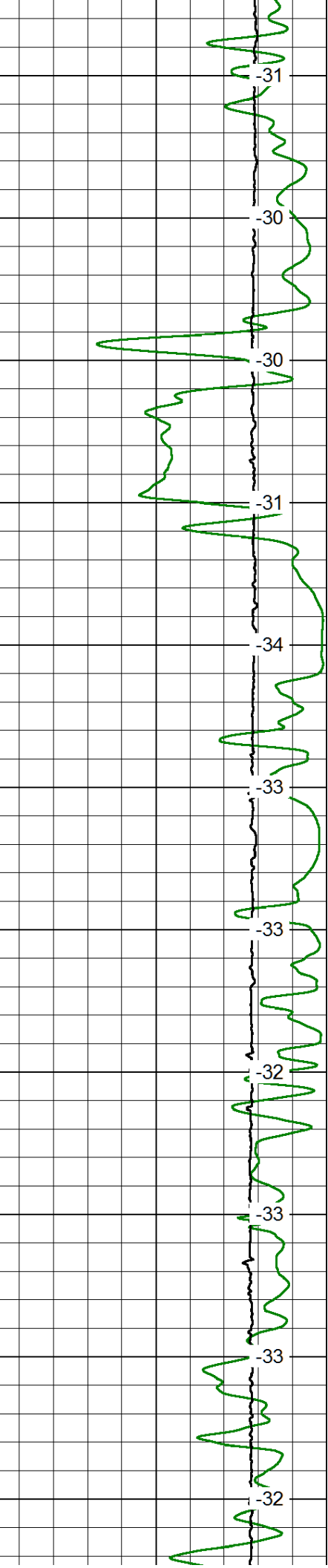
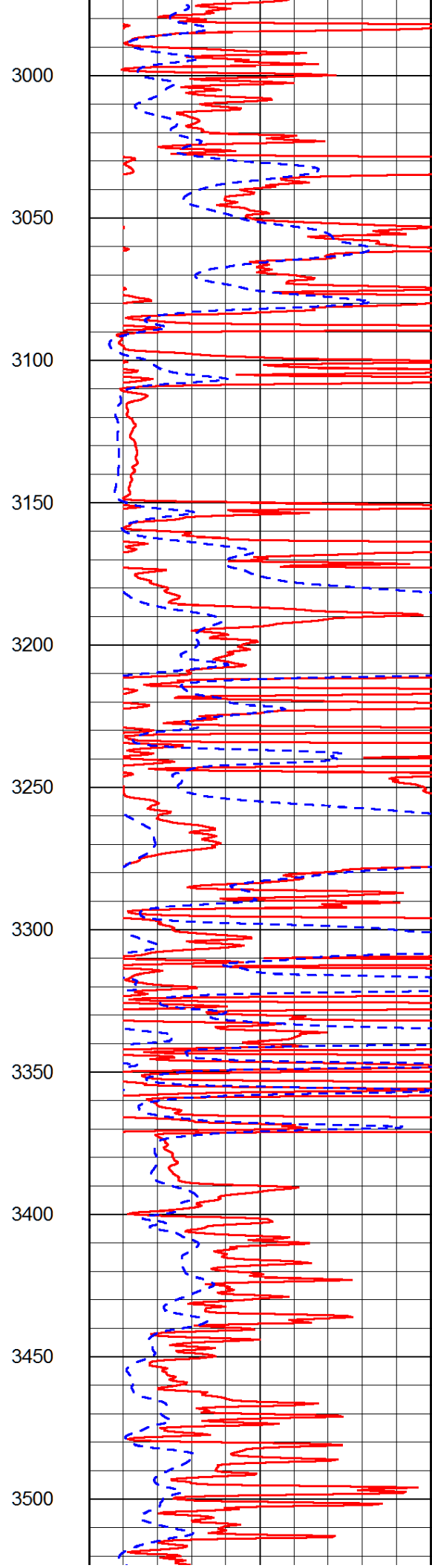
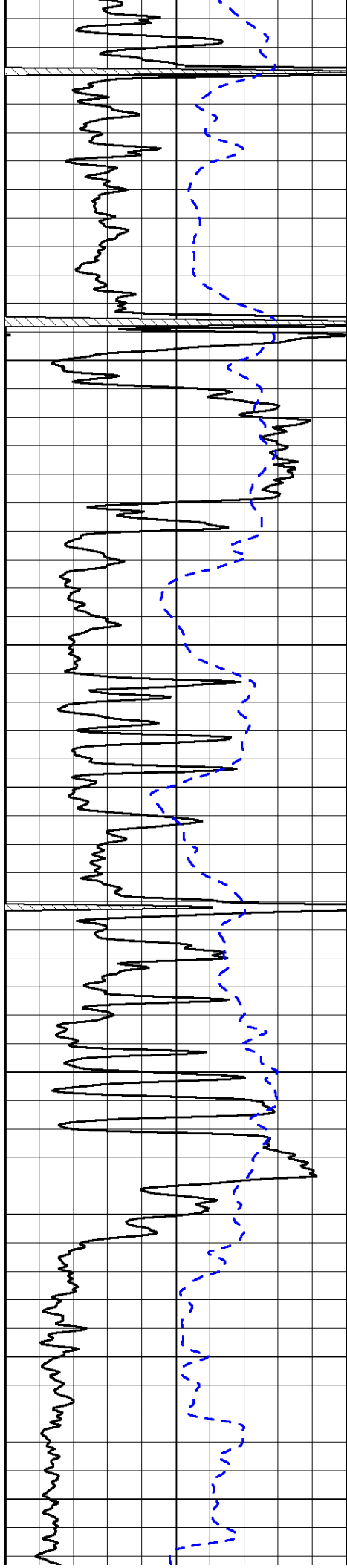
LSPD

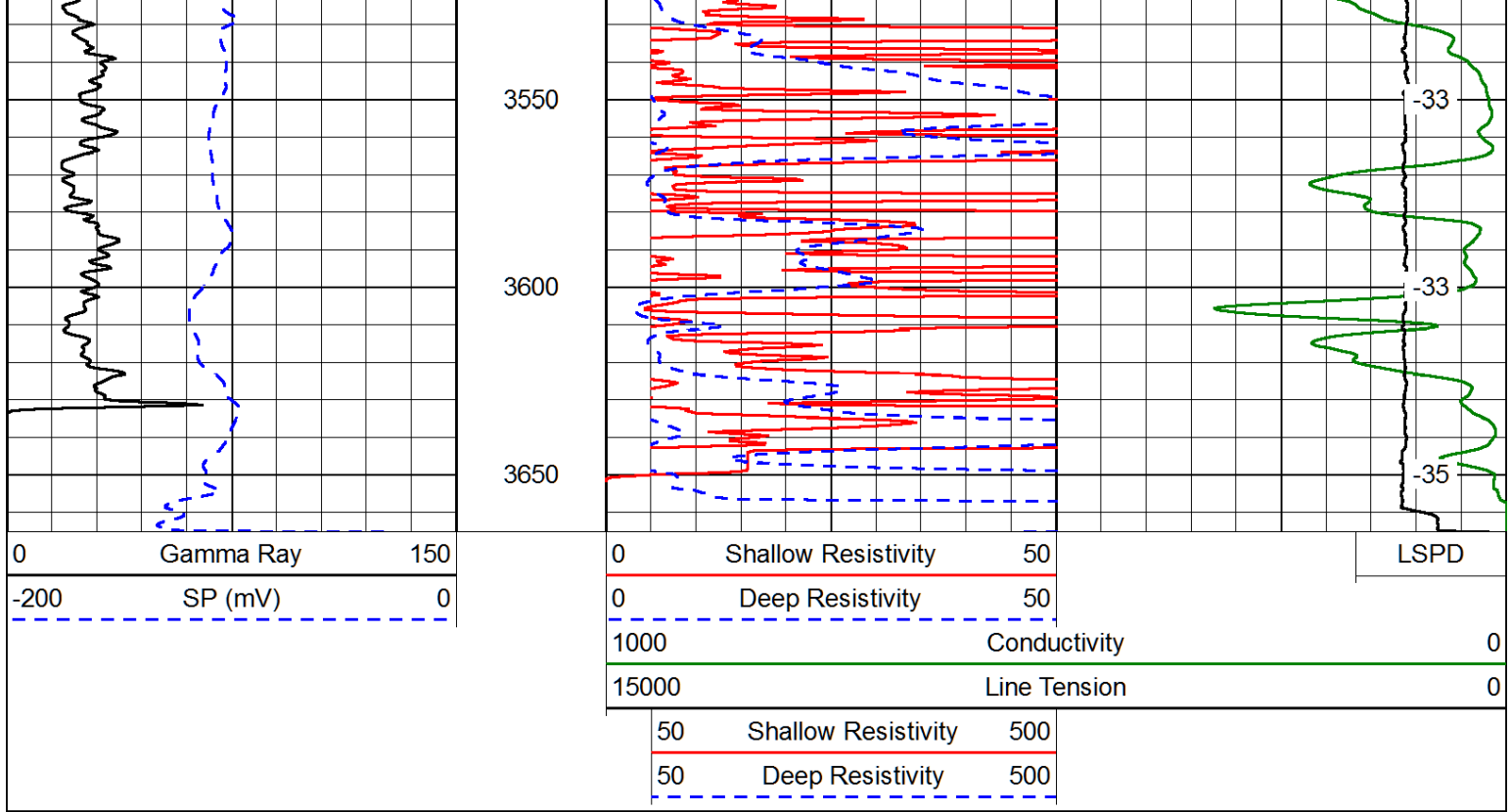
50	Shallow Resistivity	500
50	Deep Resistivity	500



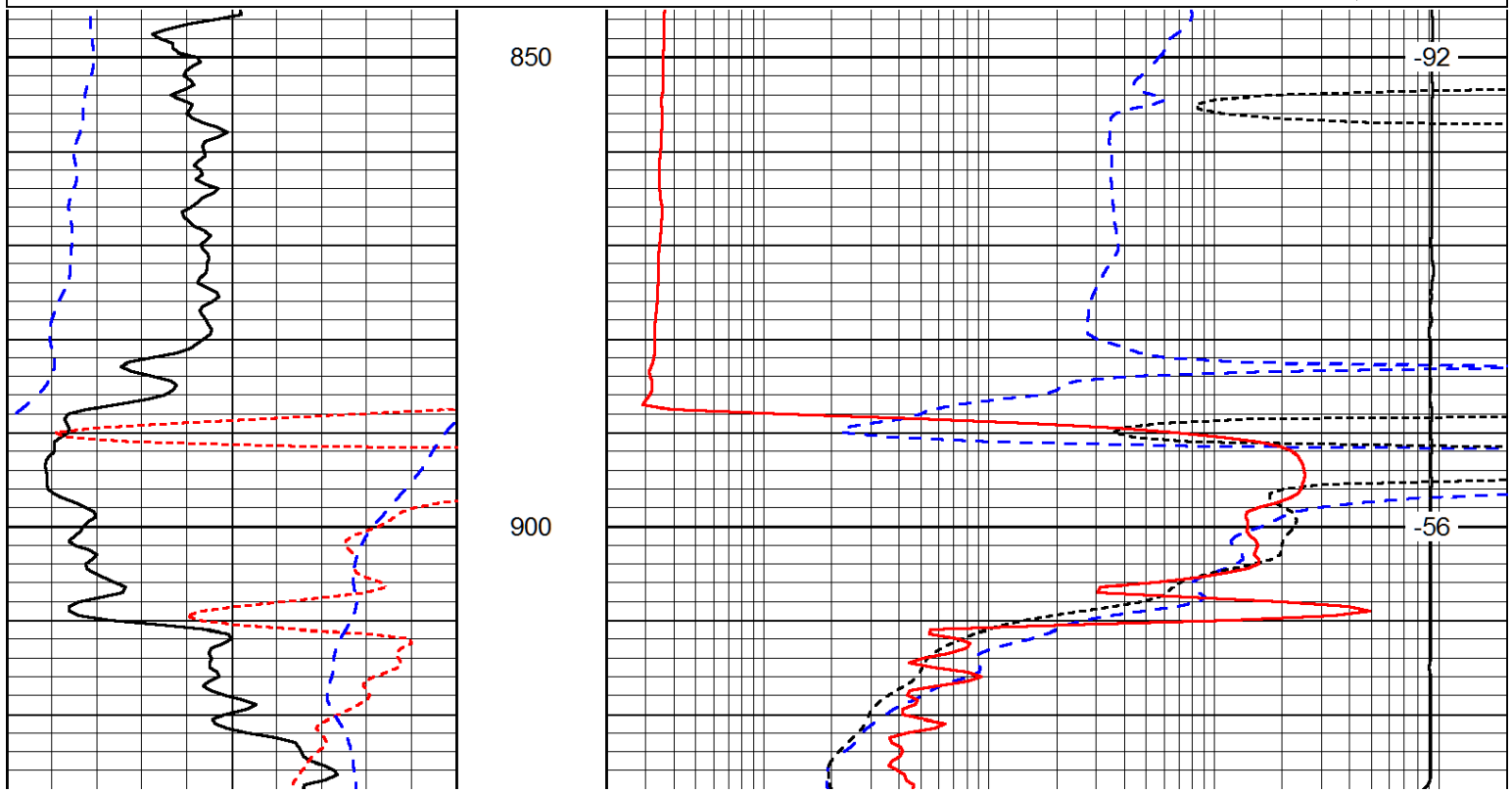
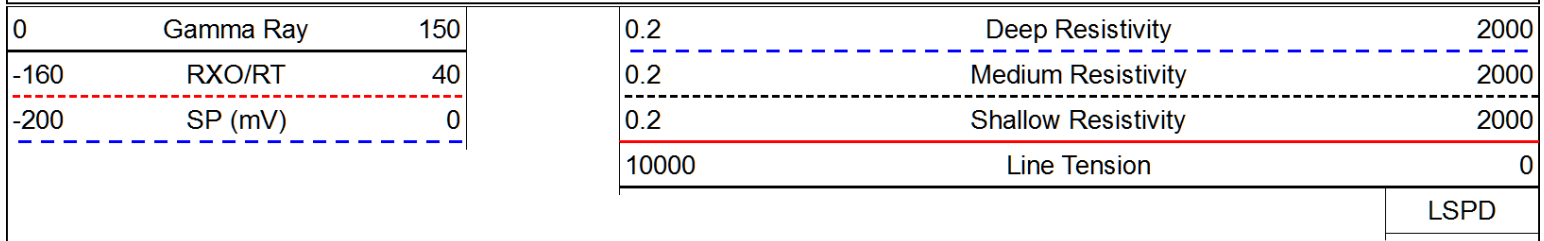


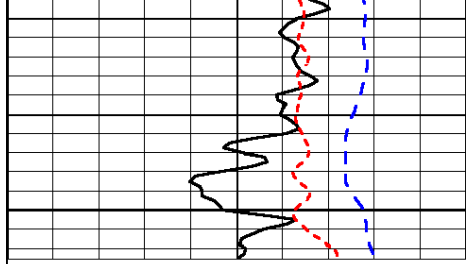






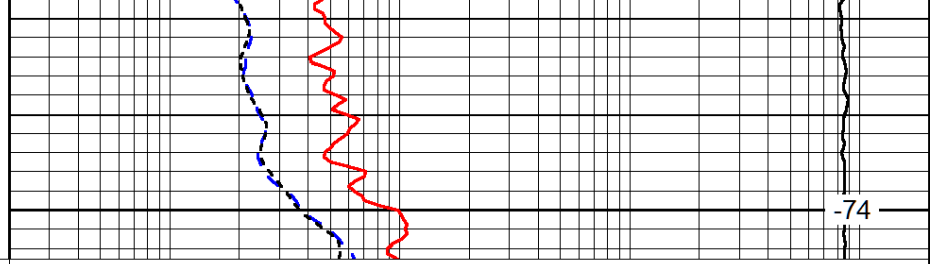
Database File: rjm_chris_schneider_2_hd.db
 Dataset Pathname: DIL/rjmstk
 Presentation Format: dil
 Dataset Creation: Sun Jul 20 14:47:02 2014
 Charted by: Depth in Feet scaled 1:240





0	Gamma Ray	150
-160	RXO/RT	40
-200	SP (mV)	0

950



0.2	Deep Resistivity	2000
0.2	Medium Resistivity	2000
0.2	Shallow Resistivity	2000
10000	Line Tension	0

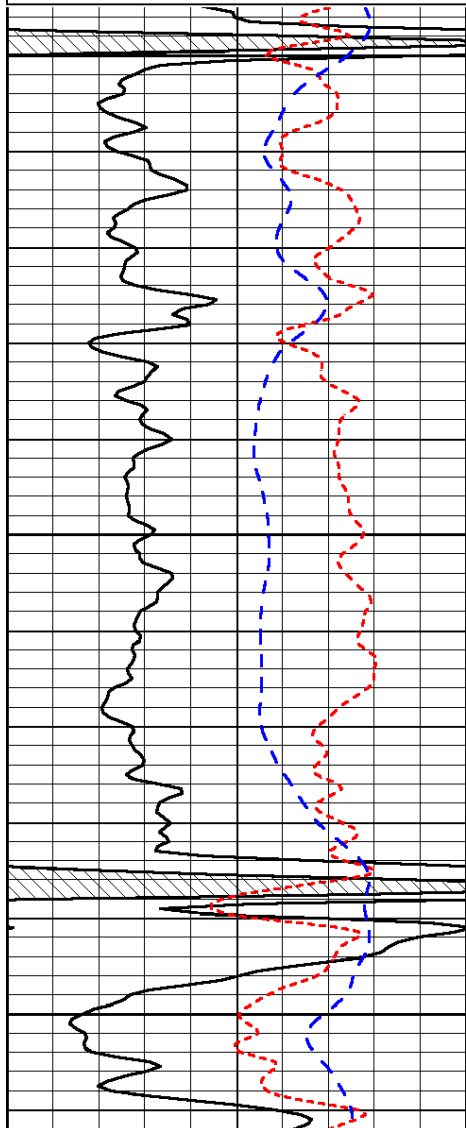
LSPD

Database File: rjm_chris_schneider_2_hd.db
 Dataset Pathname: DIL/rjmstk
 Presentation Format: dil
 Dataset Creation: Sun Jul 20 14:47:02 2014
 Charted by: Depth in Feet scaled 1:240

0	Gamma Ray	150
-160	RXO/RT	40
-200	SP (mV)	0

0.2	Deep Resistivity	2000
0.2	Medium Resistivity	2000
0.2	Shallow Resistivity	2000
10000	Line Tension	0

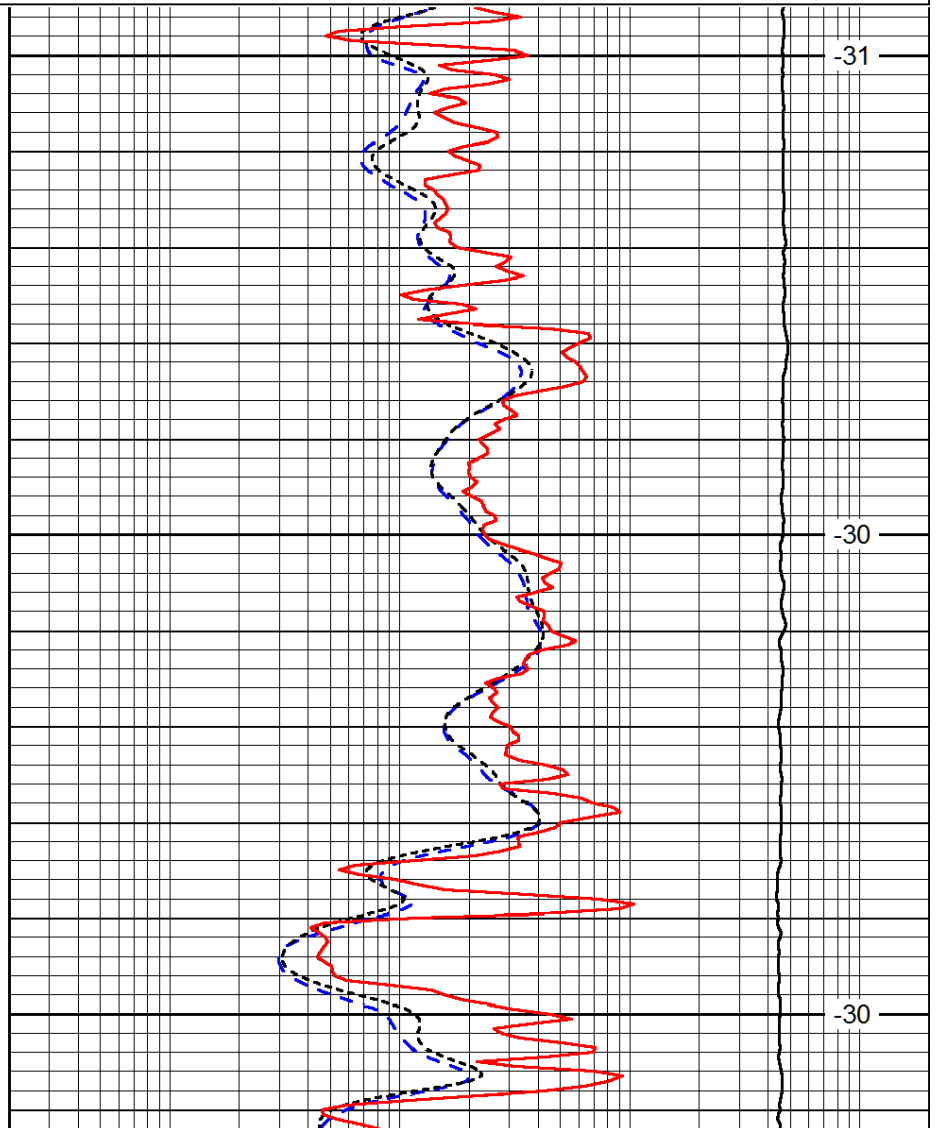
LSPD



3000

3050

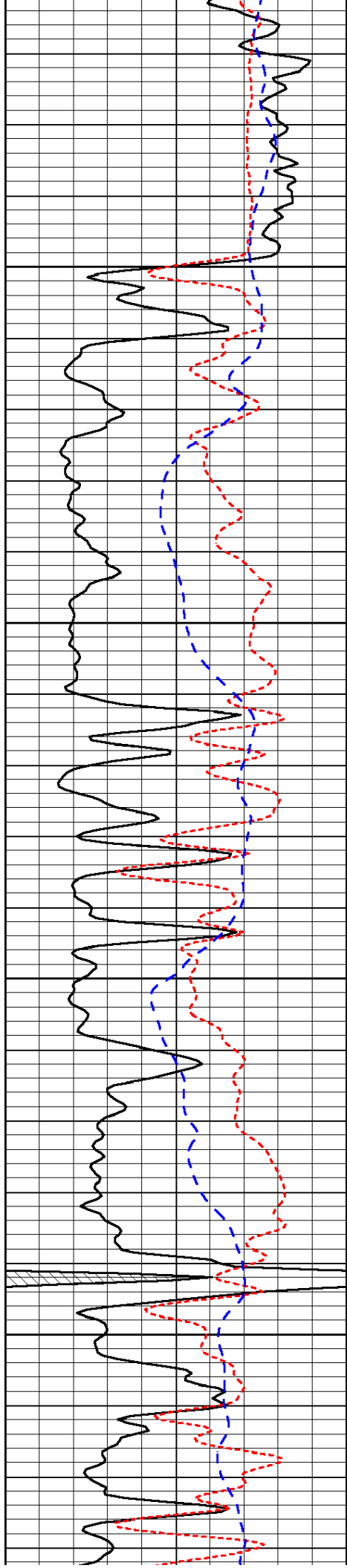
3100



-31

-30

-30

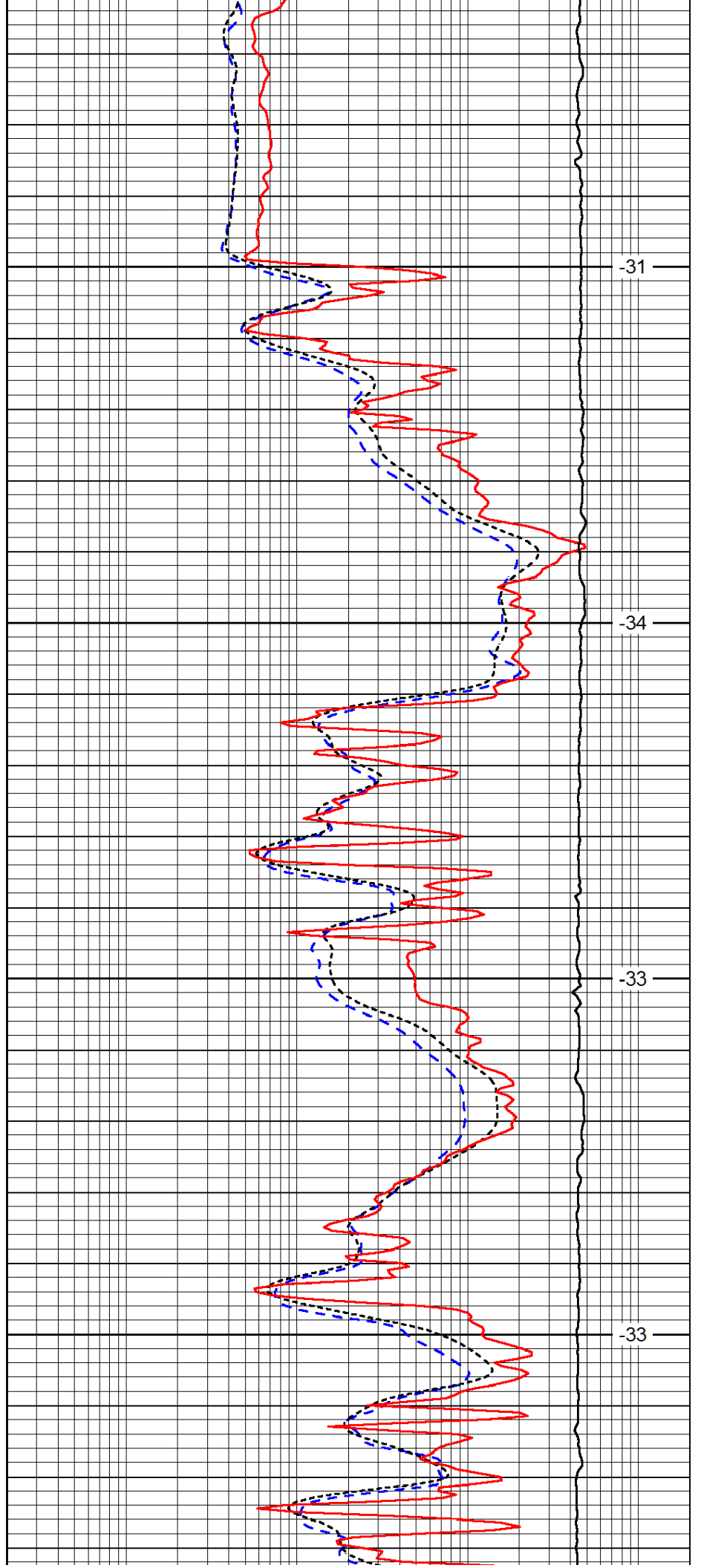


3150

3200

3250

3300

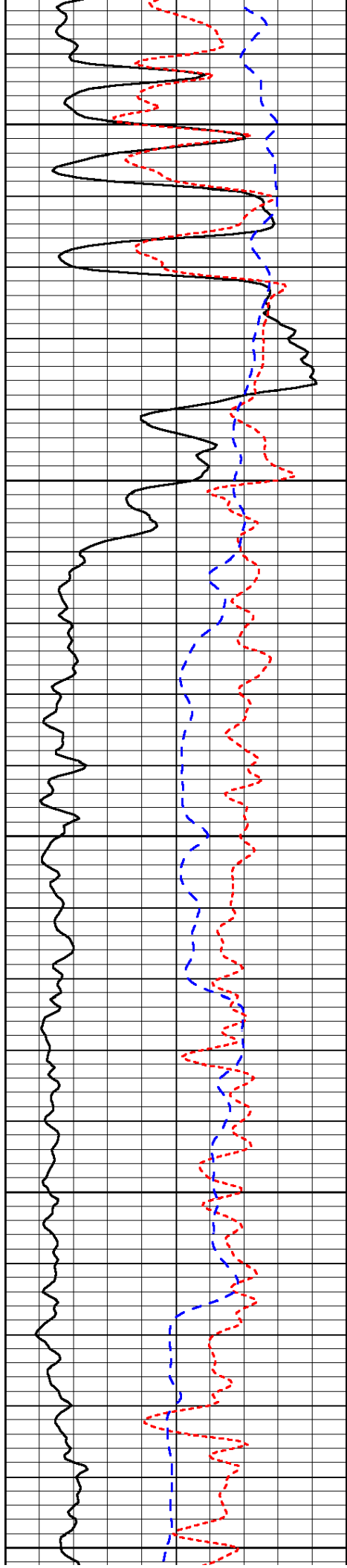


-31

-34

-33

-33



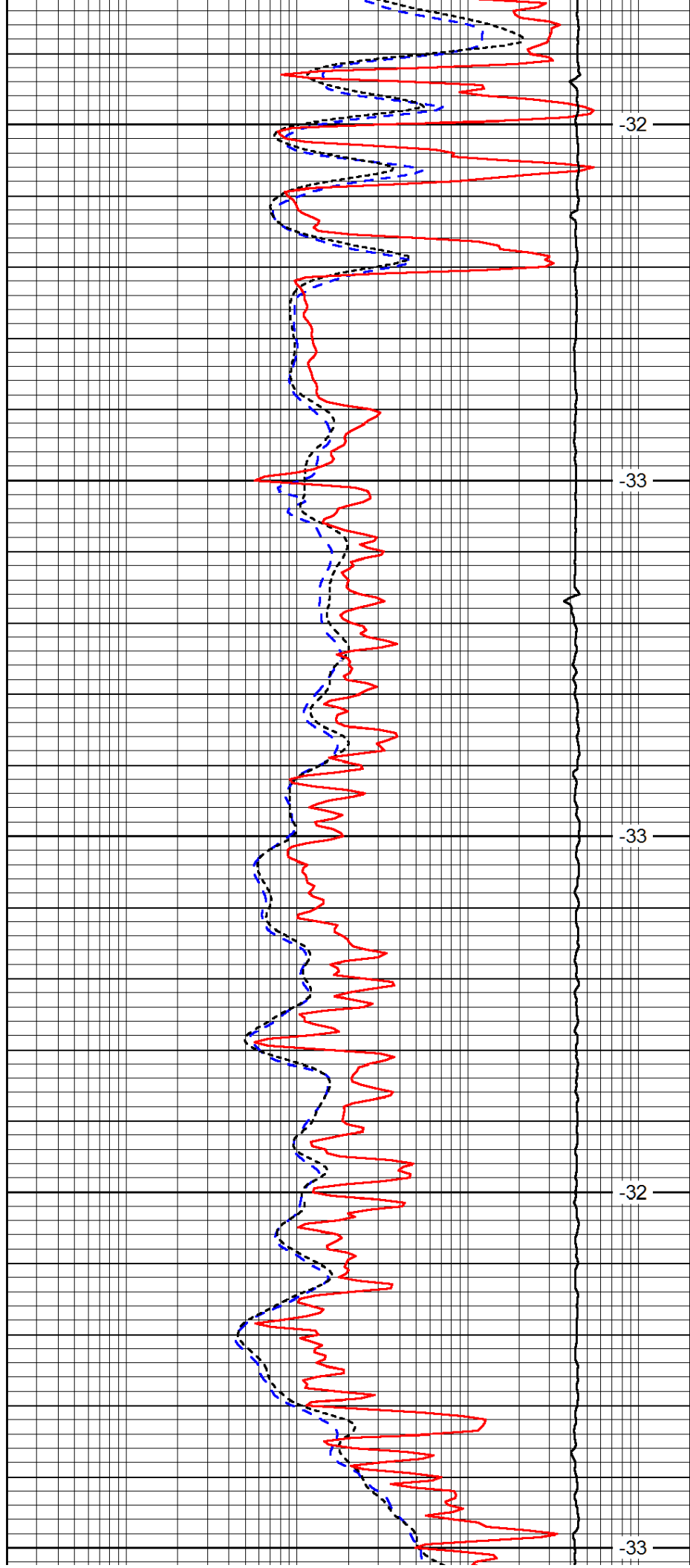
3350

3400

3450

3500

3550



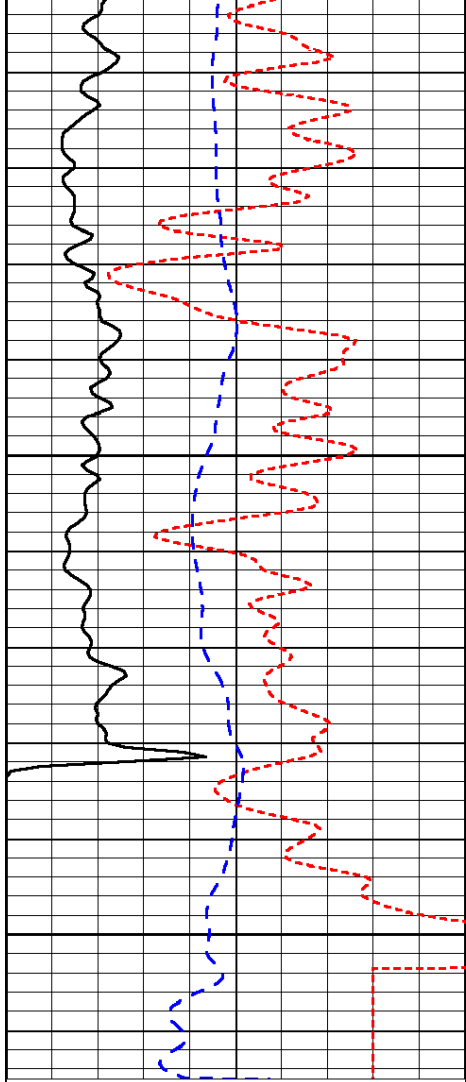
-32

-33

-33

-32

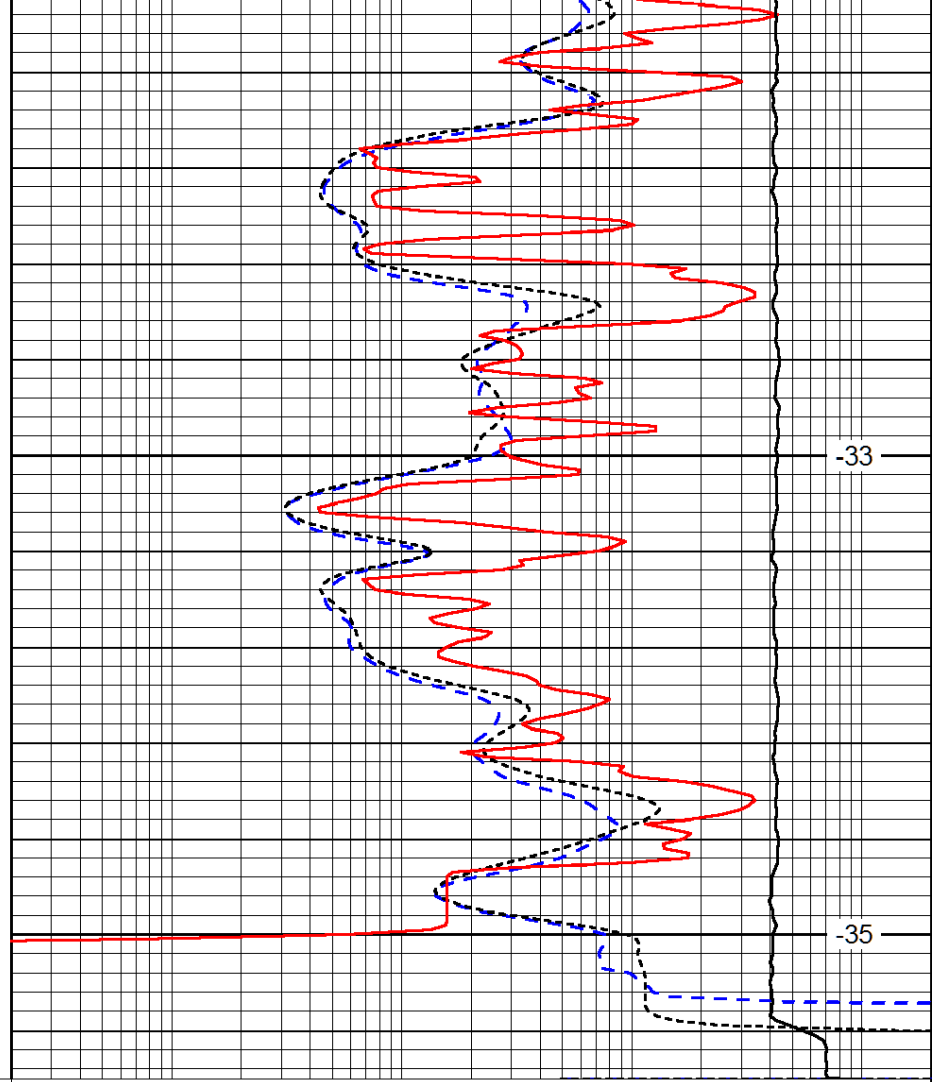
-33



3600

3650

0	Gamma Ray	150
-160	RXO/RT	40
-200	SP (mV)	0



-33

-35

0.2	Deep Resistivity	2000
0.2	Medium Resistivity	2000
0.2	Shallow Resistivity	2000
10000	Line Tension	0

LSPD