



Pioneer Energy Services

Microresistivity Log

15-023-21,390-00-00

API No.

Company **Berexco, LLC**

Well **Mears 'B' #2-9**

Field **Jones Canyon Southeast**

County **Cheyenne** State **Kansas**

Location **780' FSL & 1780' FEL**

Other Services
RAG

Sec: **9** Twp: **1S** Rge: **37W**

Permanent Datum **Ground Level** Elevation **3265**

Log Measured From **Kelly Bushing** 13 Ft. Above Perm. Datum

Elevation
K.B. 3278
D.F. 3265
G.L. 3265

Date	5/30/2014	
Run Number	Two	
Depth Driller	4720	
Depth Logger	4715	
Bottom Logged Interval	4714	
Top Log Interval	3500	
Casing Driller	8.625 @ 310	
Casing Logger	307	
Bit Size	7.875	
Type Fluid in Hole	Chemical	
Salinity, ppm CL	1,000	
Density / Viscosity	9.3 52	
pH / Fluid Loss	11.5 5.6	
Source of Sample	Flowline	
Rm @ Meas. Temp	1.4 @ 65	
Rmf @ Meas. Temp	1.05 @ 65	
Rmc @ Meas. Temp	1.89 @ 65	
Source of Rmf / Rmc	Charts	
Rm @ BHT	.74 @ 123	
Operating Rig Time	4 Hours	
Max Rec. Temp. F	123	
Equipment Number	17	
Location	Hays	
Recorded By	C. Desai	
Witnessed By	Pete Volmer	

<<< Fold Here >>>

All interpretations are opinions based on inferences from electrical or other measurements and we cannot and do not guarantee the accuracy or correctness of any interpretation, and we shall not, except in the case of gross or willful negligence on our part, be liable or responsible for any loss, costs, damages, or expenses incurred or sustained by anyone resulting from any interpretation made by any of our officers, agents or employees. These interpretations are also subject to our general terms and conditions set out in our current Price Schedule.

Comments

Thank you for using Pioneer Energy Services
www.pioneerres.com
785 625 3858

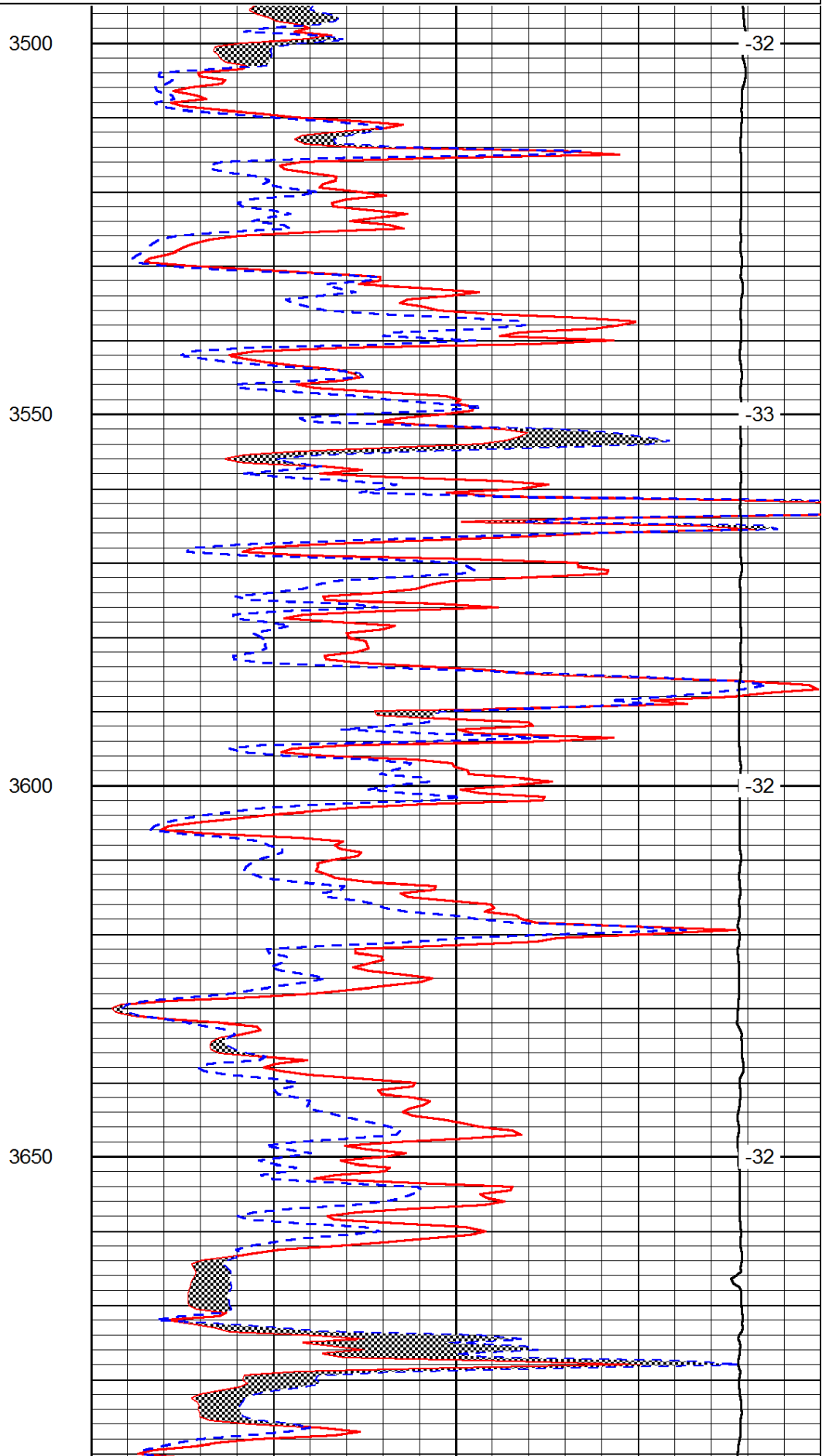
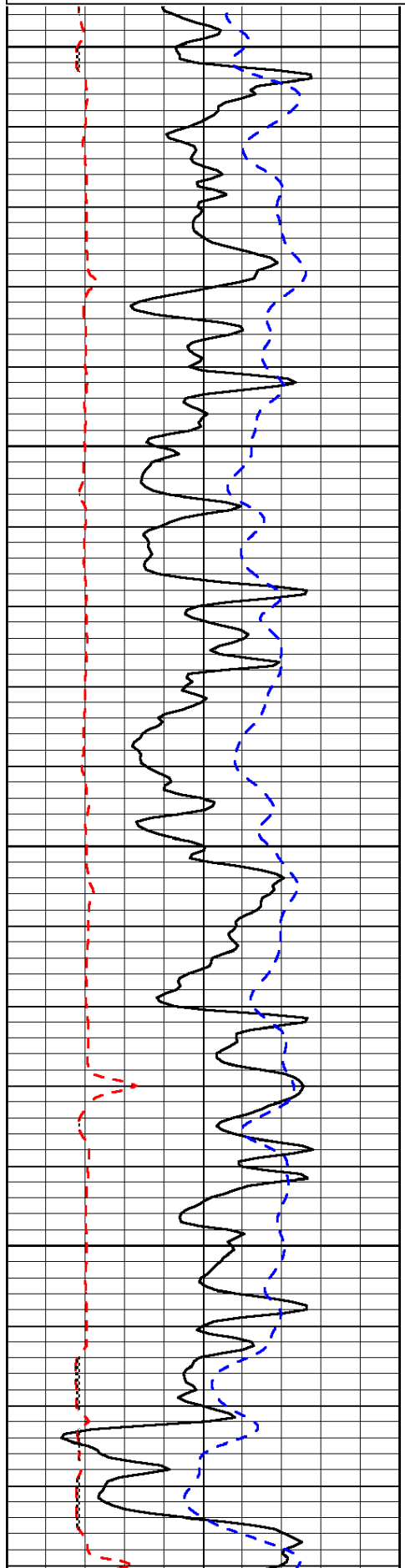
Bird City KS, N to AA Rd,
E to 32 Rd, 1 3/4 N, Right at the Y, 1/4 E

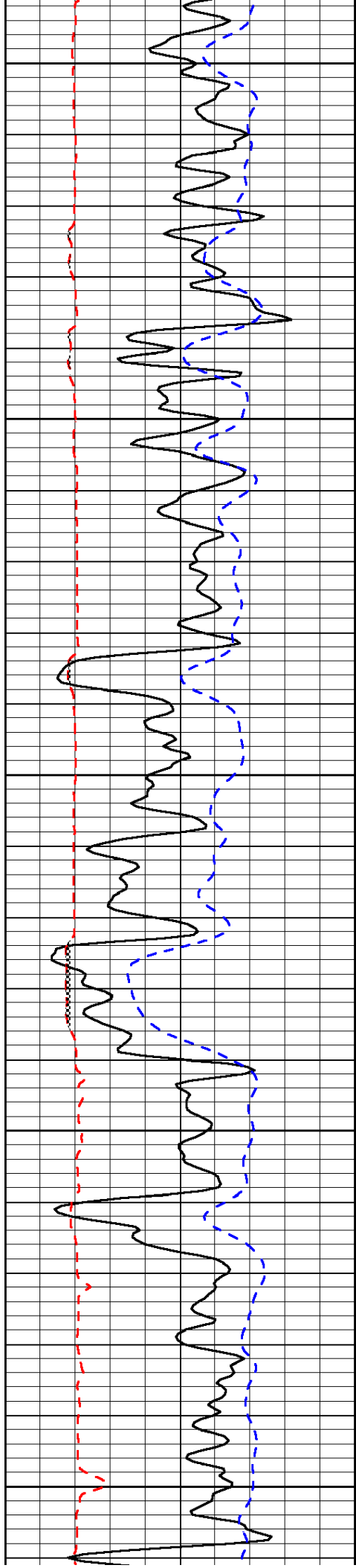
Database File: c:\warrior\data\berexco_mears b #2-9\berexcohd.db
 Dataset Pathname: rag/berrag
 Presentation Format: micro
 Dataset Creation: Fri May 30 08:51:15 2014
 Charted by: Depth in Feet scaled 1:240

0	Gamma Ray	150
6	Micro Log Caliper (GAPI)	16
-200	SP (mV)	0

0	Micro Inverse 1 X 1	40
0	Micro Normal 2"	40
15000	Line Weight	0

LSPD





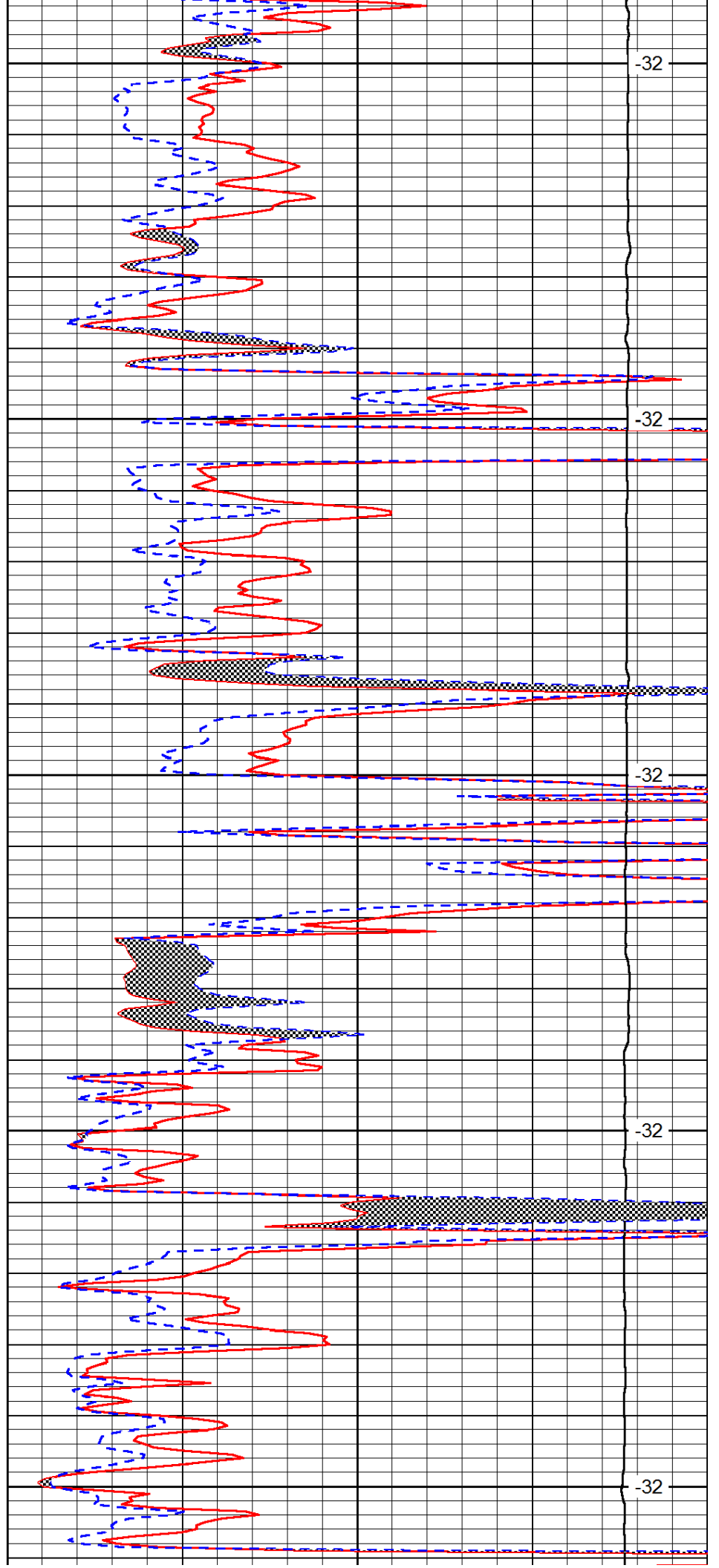
3700

3750

3800

3850

3900



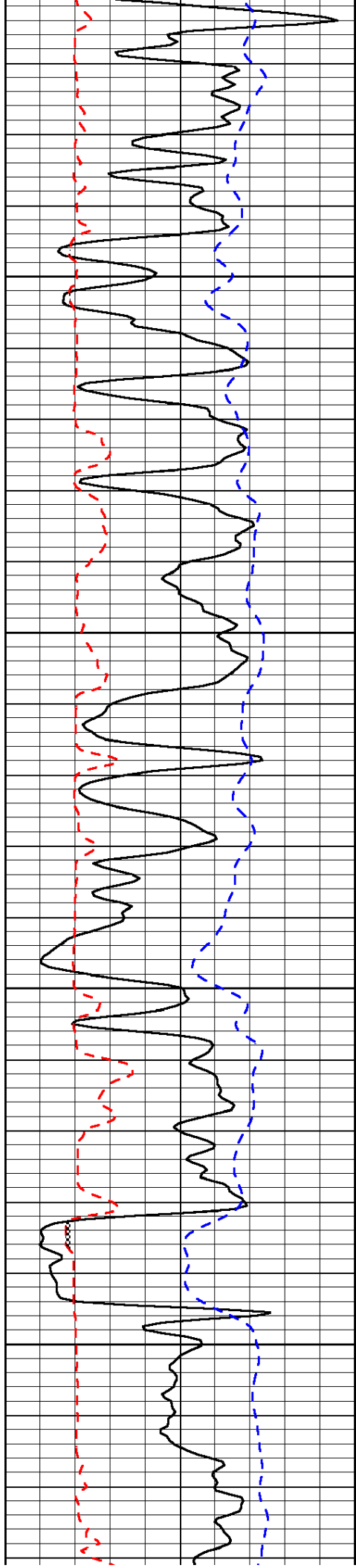
-32

-32

-32

-32

-32

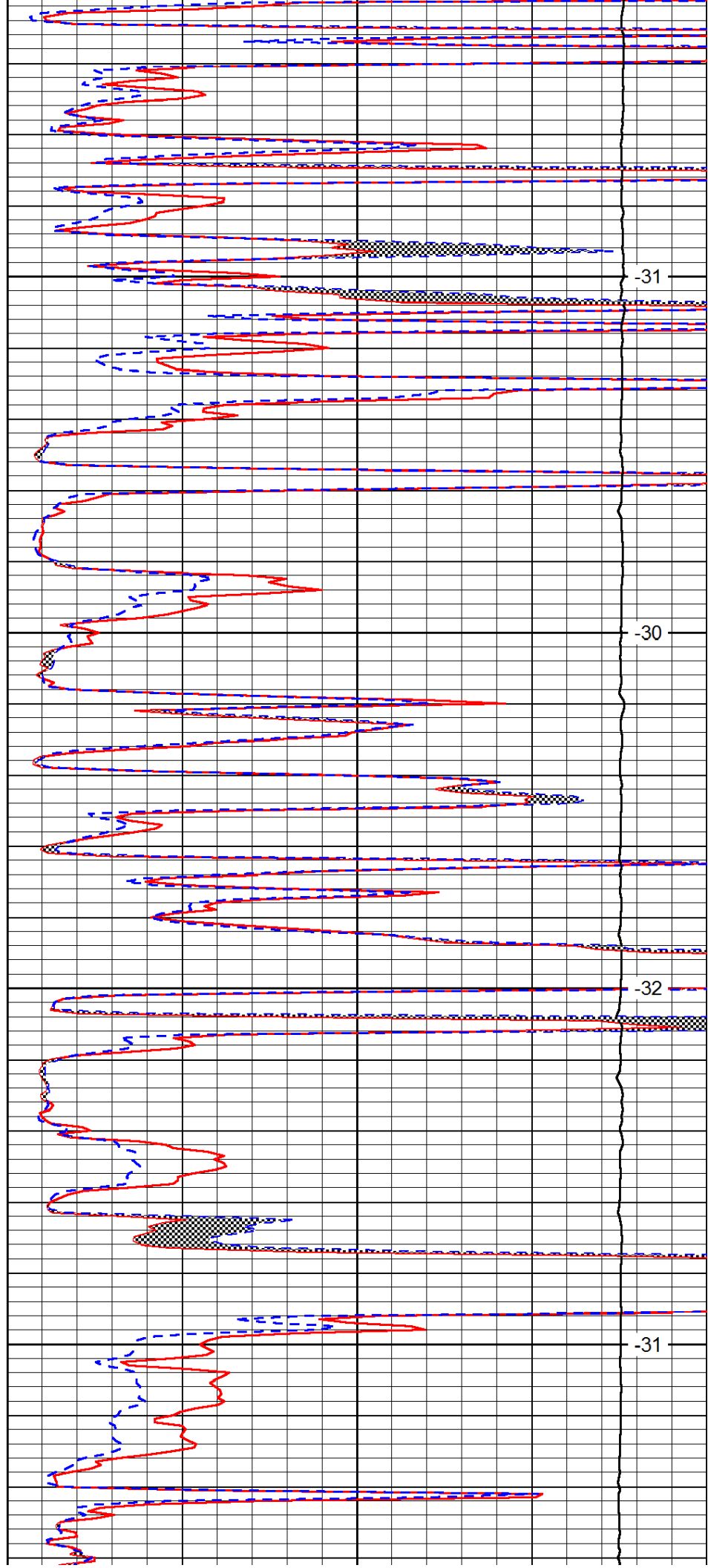


3950

4000

4050

4100

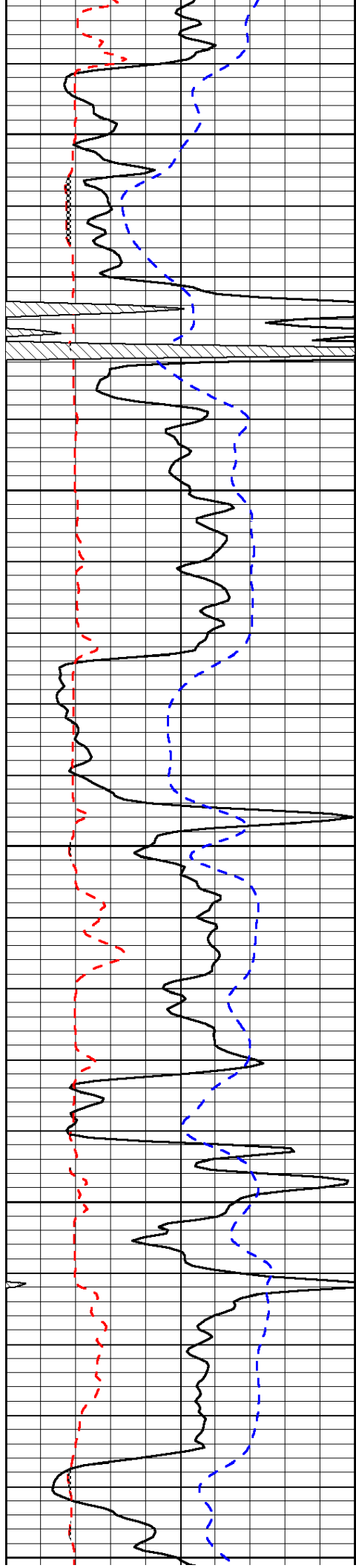


-31

-30

-32

-31



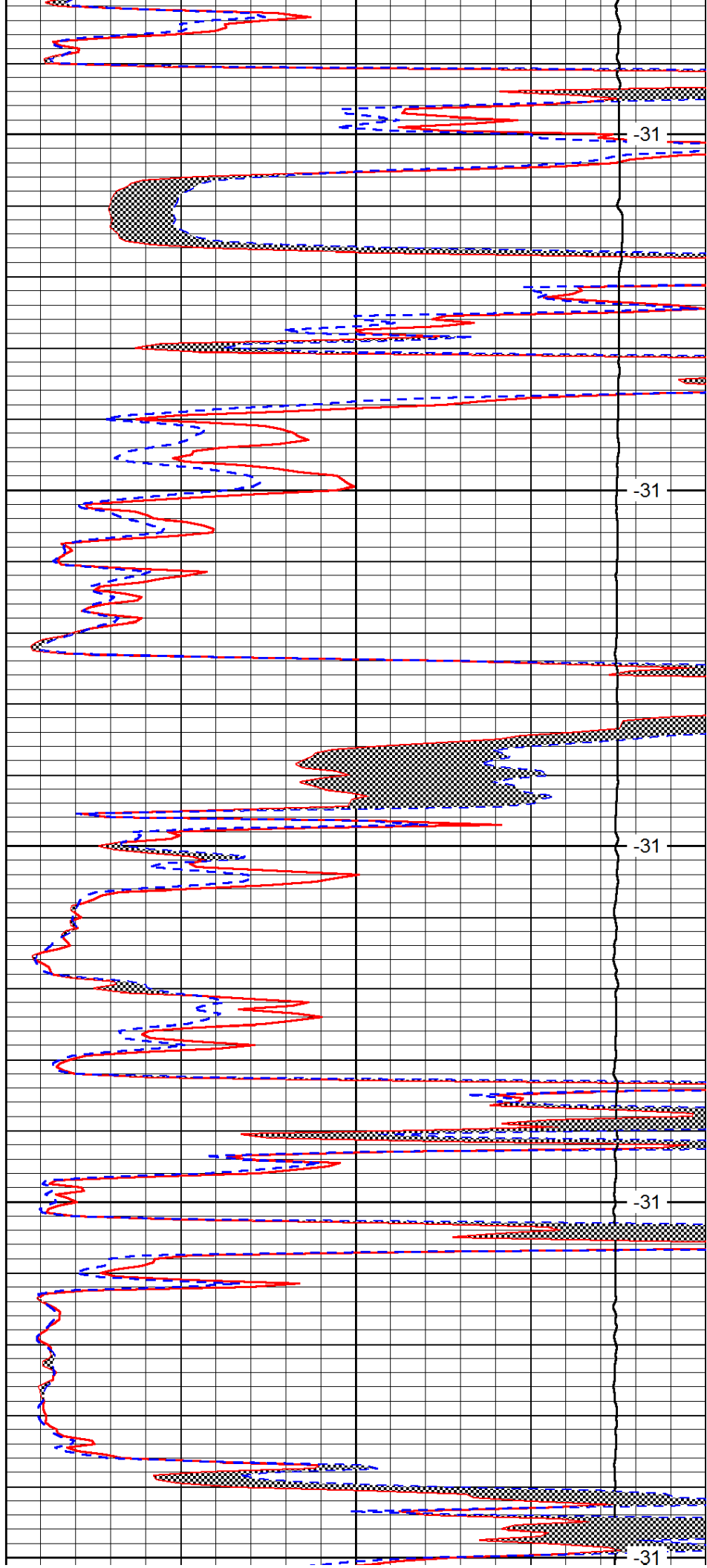
4150

4200

4250

4300

4350



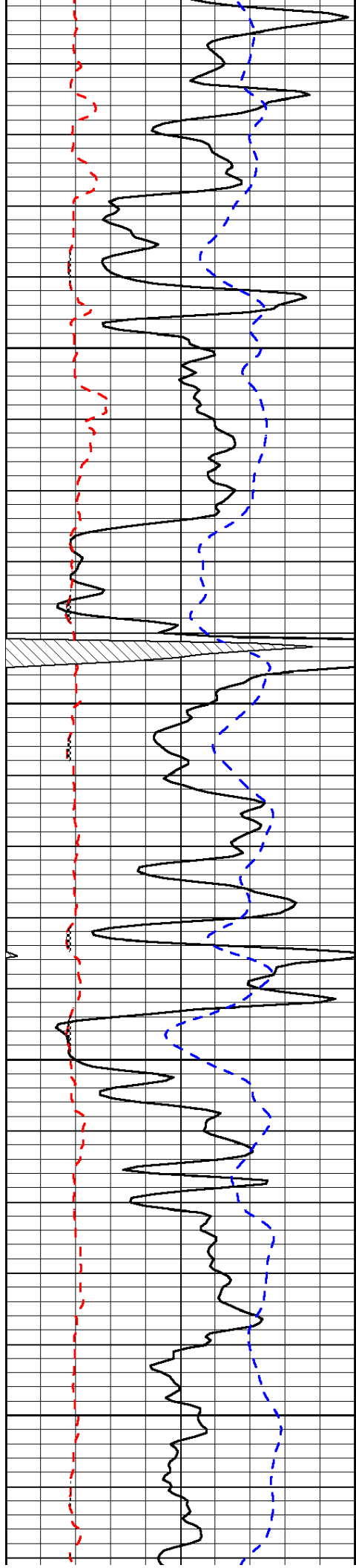
-31

-31

-31

-31

-31

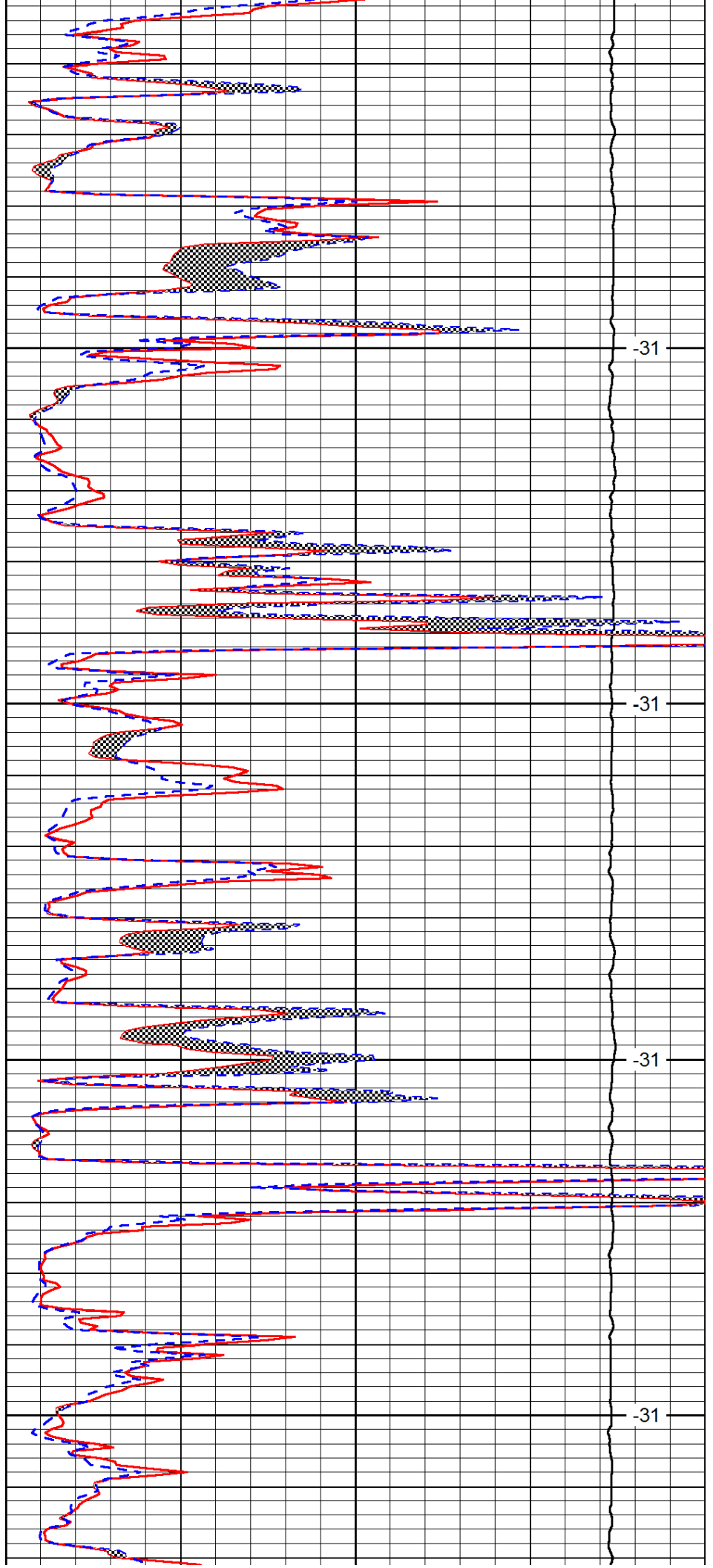


4400

4450

4500

4550

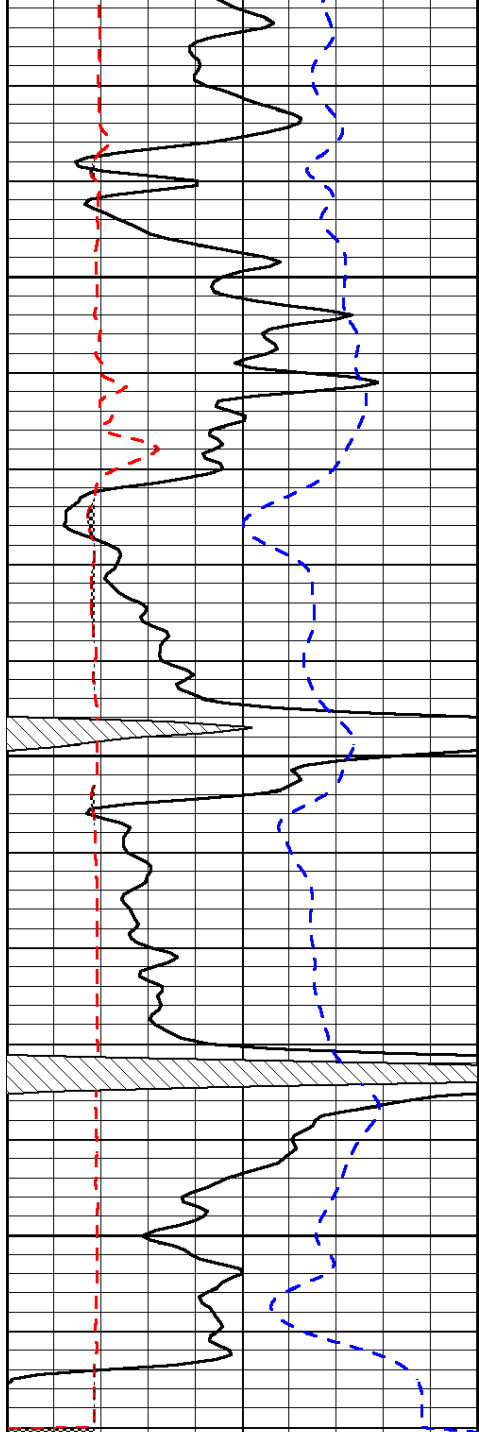


-31

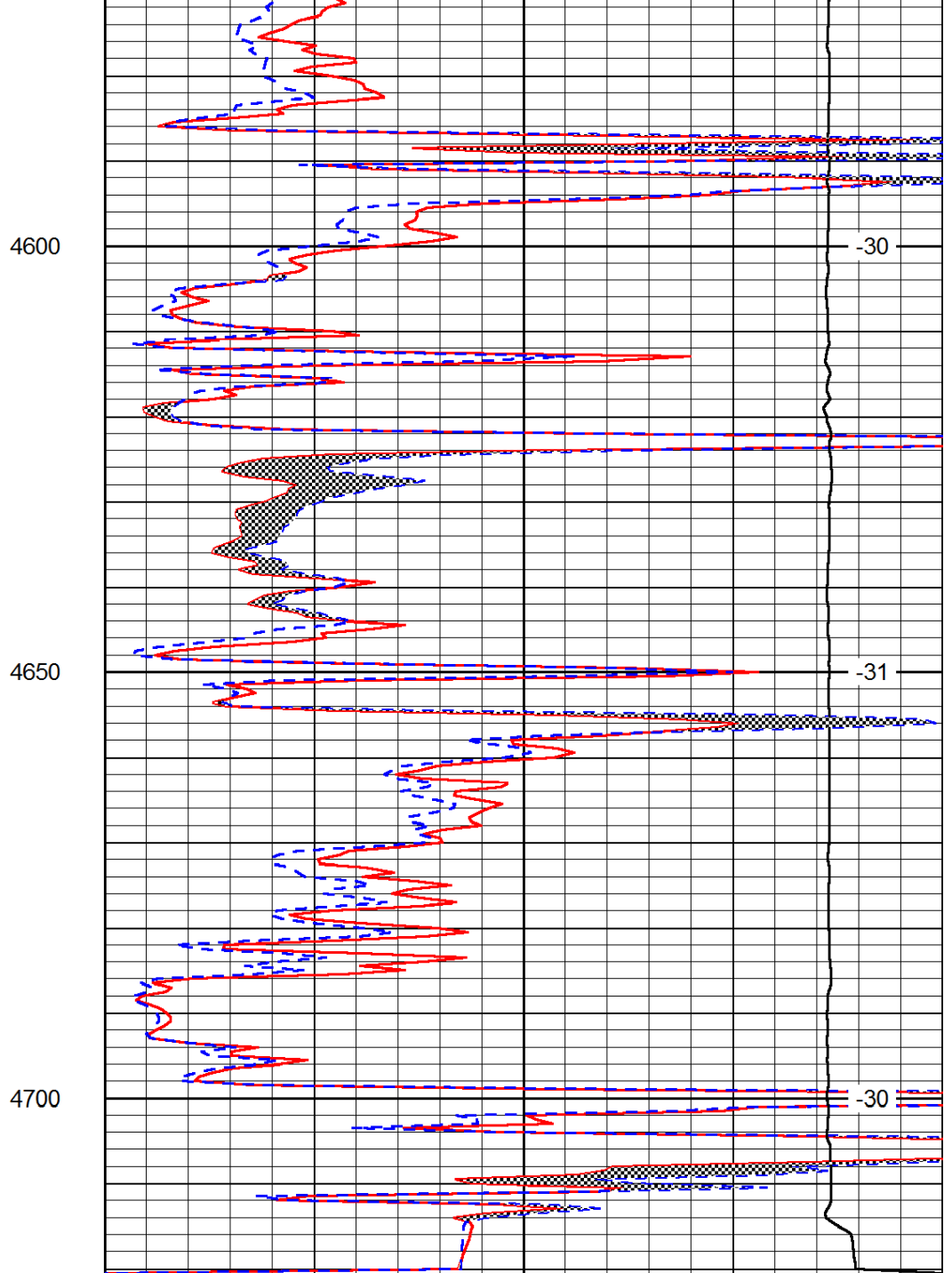
-31

-31

-31



0	Gamma Ray	150
6	Micro Log Caliper (GAPI)	16
-200	SP (mV)	0



0	Micro Inverse 1 X 1	40
0	Micro Normal 2''	40
15000	Line Weight	0

LSPD