



**COMPLETION  
& PRODUCTION  
SERVICES CO.**

**MICRO  
LOG**

Company BOW CREEK OIL COMPANY  
Well WILHELM # 1-25  
Field WILHELM  
County RAWLINGS State KANSAS

Company BOW CREEK OIL COMPANY  
Well WILHELM # 1-25  
Field WILHELM  
County RAWLINGS  
State KANSAS

Location: API #: 15-153-21090-00-00  
1193' FNL & 1439' FEL  
SE - SE - NW - NE  
SEC 25 TWP 1S RGE 33W  
GROUND LEVEL Elevation 3038  
Log Measured From KELLY BUSHING 10' A.G.L.  
Drilling Measured From KELLY BUSHING  
Other Services  
CNL/CDL  
DIL/SON  
Elevation  
K.B. 3048  
D.F. 3046  
G.L. 3038

Date	1/15/15		
Run Number	TWO		
Depth Driller	4639		
Depth Logger	4640		
Bottom Logged Interval	4622		
Top Log Interval	3000		
Casing Driller	8 5/8 @ 300'		
Casing Logger	308'		
Bit Size	7.875		
Type Fluid in Hole	CHEMICAL MUD		
Density / Viscosity	9.6/65	CHLORIDES 500 PPM	
pH / Fluid Loss	10.0/8.8		
Source of Sample	FLOWLINE		
Rm @ Meas. Temp	1.20 @ 79F		
Rmf @ Meas. Temp	0.90 @ 79F		
Rmc @ Meas. Temp	1.44 @ 79F		
Source of Rmf / Rmc	MEASURED		
Rm @ BHT	0.79 @ 120F		
Time Circulation Stopped	2 HOURS		
Time Logger on Bottom			
Maximum Recorded Temperature	120F		
Equipment Number	3802		
Location	HAYS, KS.		
Recorded By	IAN MABB		
Witnessed By	LYLE HERRMAN		

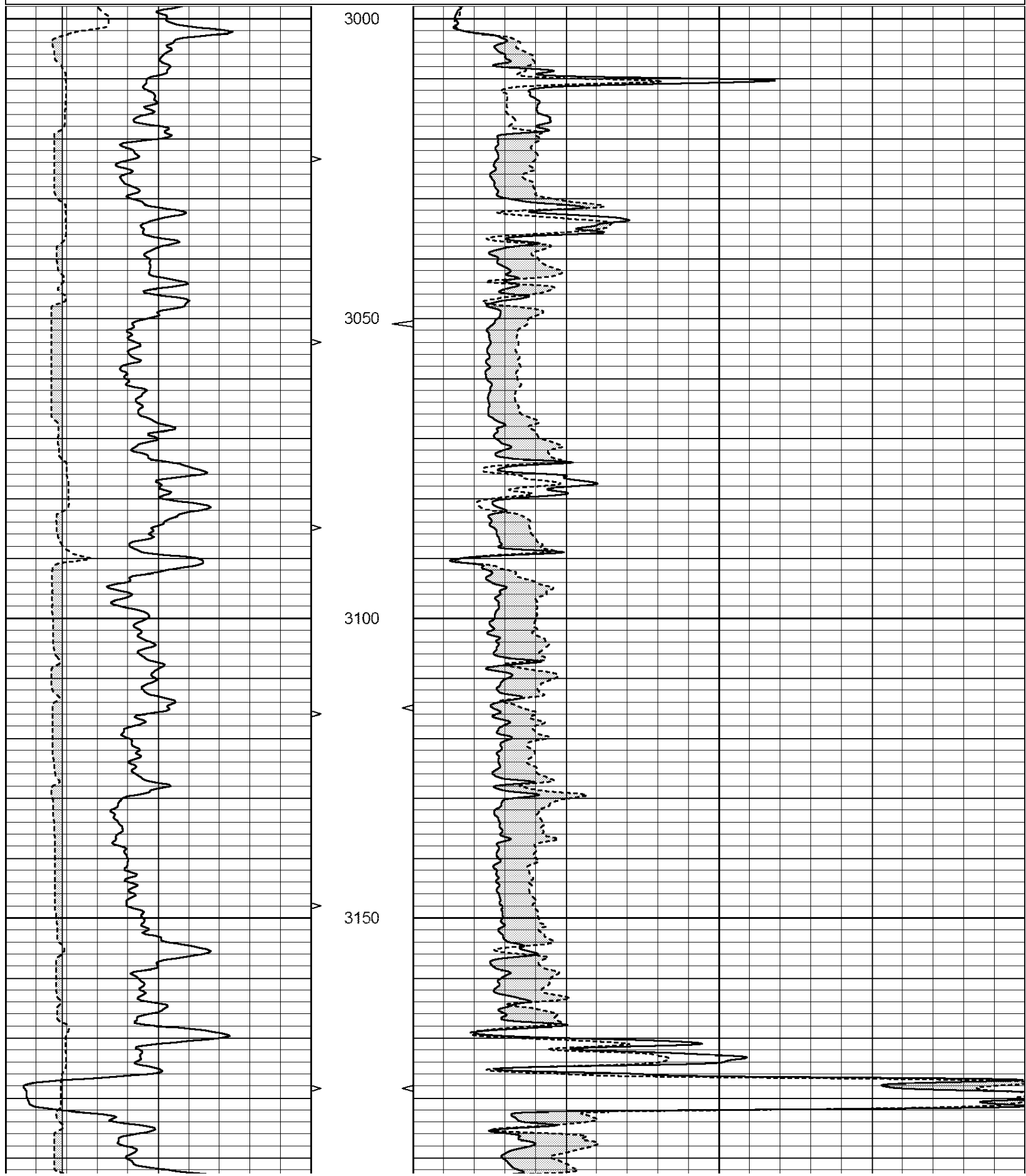
<<< Fold Here >>>

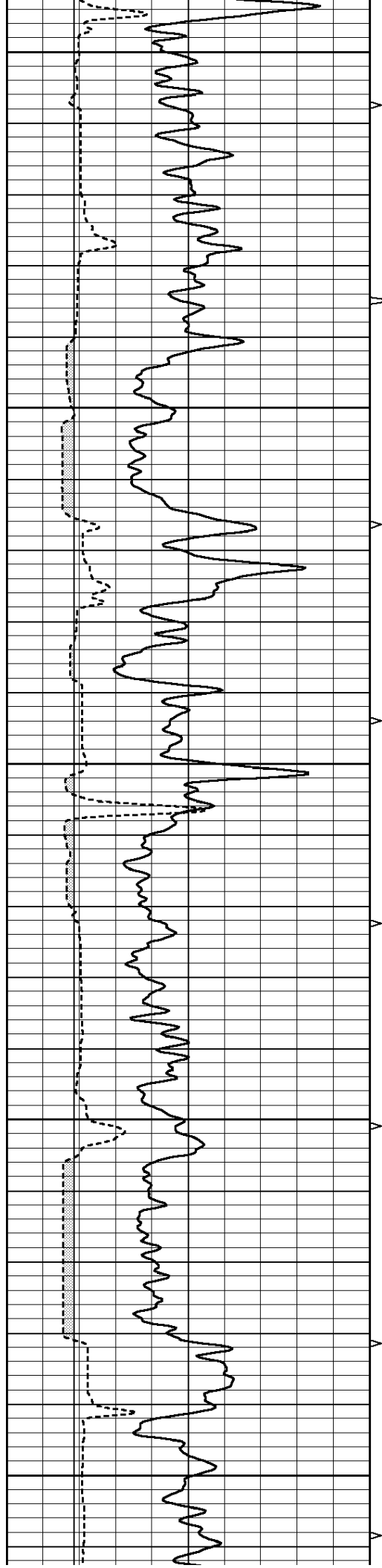
All interpretations are opinions based on inferences from electrical or other measurements and we cannot and do not guarantee the accuracy or correctness of any interpretation, and we shall not, except in the case of gross or willful negligence on our part, be liable or responsible for any loss, costs, damages, or expenses incurred or sustained by anyone resulting from any interpretation made by any of our officers, agents or employees. These interpretations are also subject to our general terms and conditions set out in our current Price Schedule.

Comments

NABORS COMPLETION & PRODUCTION SERVICES CO.  
785 ( 628 - 6395 )  
THANK YOU FOR YOUR BUSINESS  
DIRECTIONS : ATWOOD, KS. - EAST TO LUDELL RD. - TO THE STOP SIGN - JOG WEST THEN BACK  
NORTH 5 MILES - WEST INTO

0	GAMMA RAY (GAPI)	150	ABHV	0	MEL1.5 (Ohm-m)	40
6	CALIPER (in)	16	10 (ft3)	0 0	MEL2.0 (Ohm-m)	40
			TBHV			
			0 (ft3)	10		





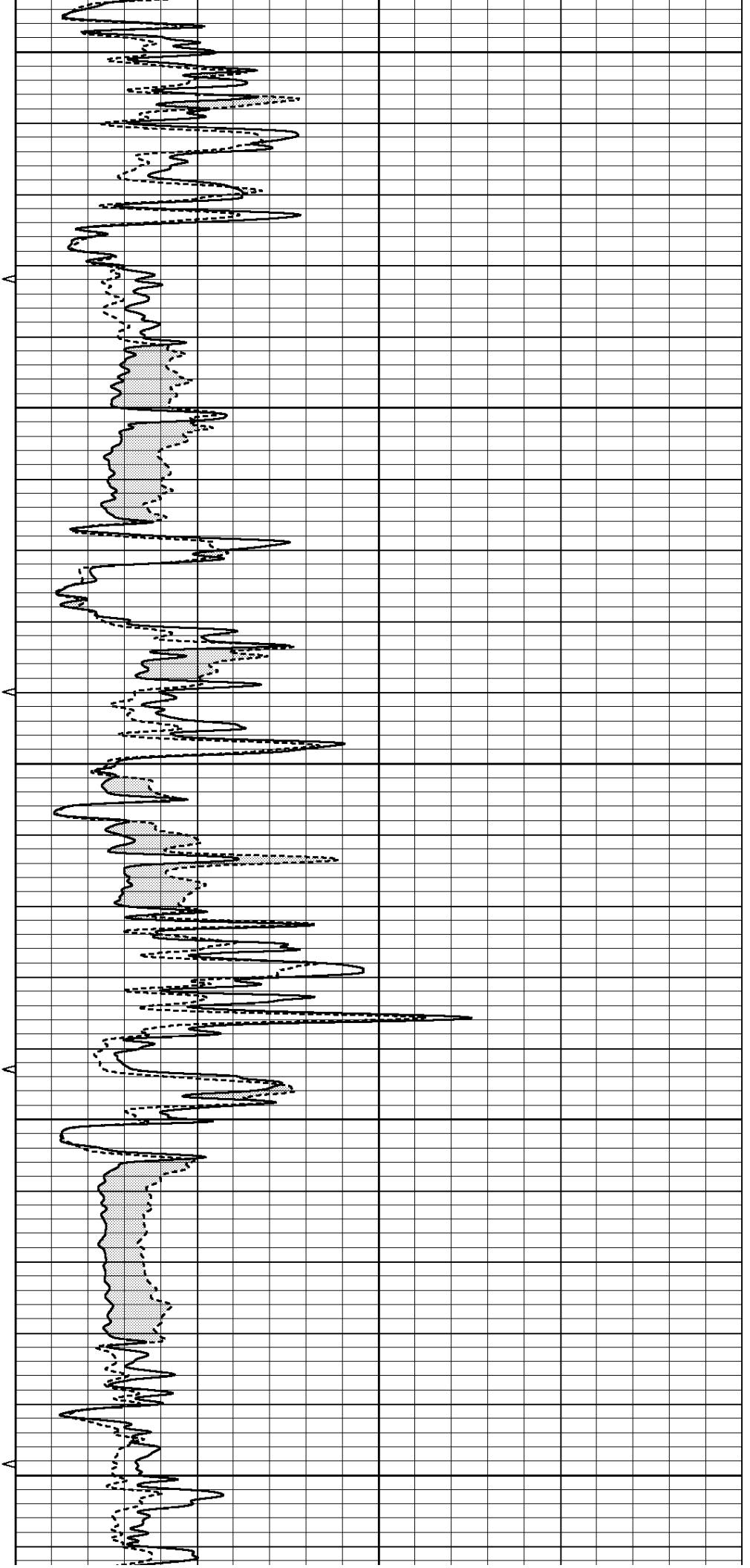
3200

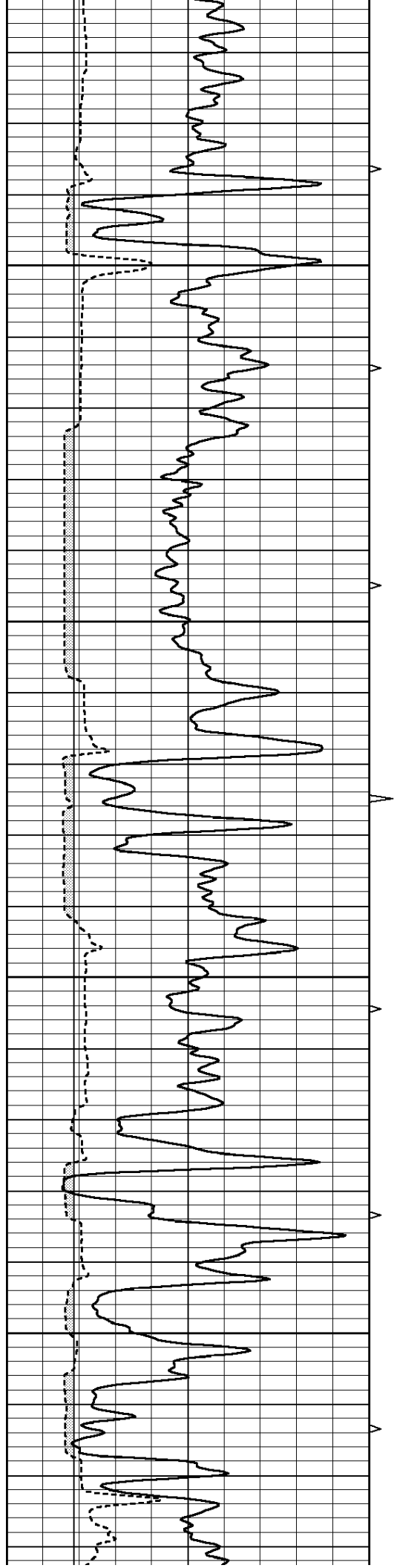
3250

3300

3350

3400



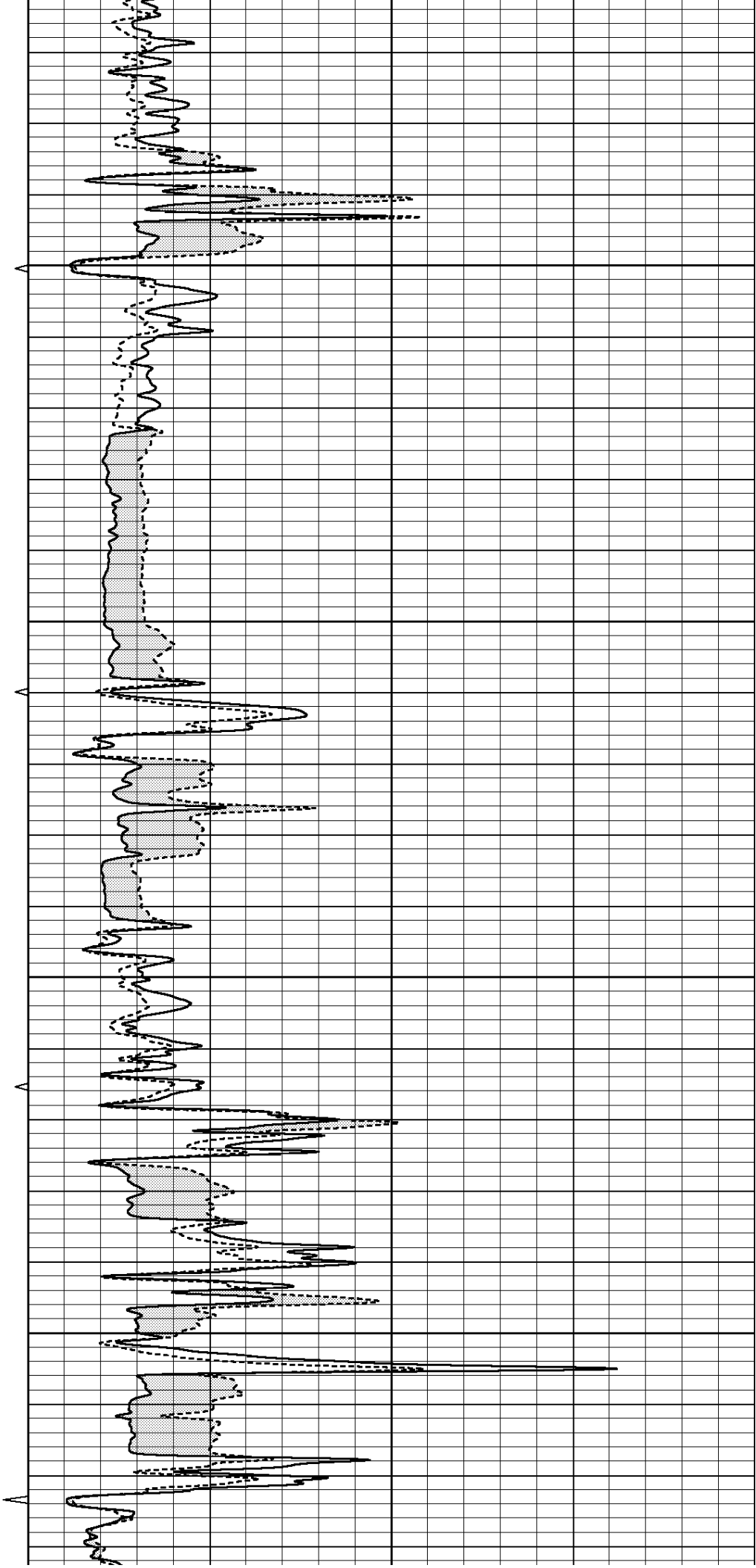


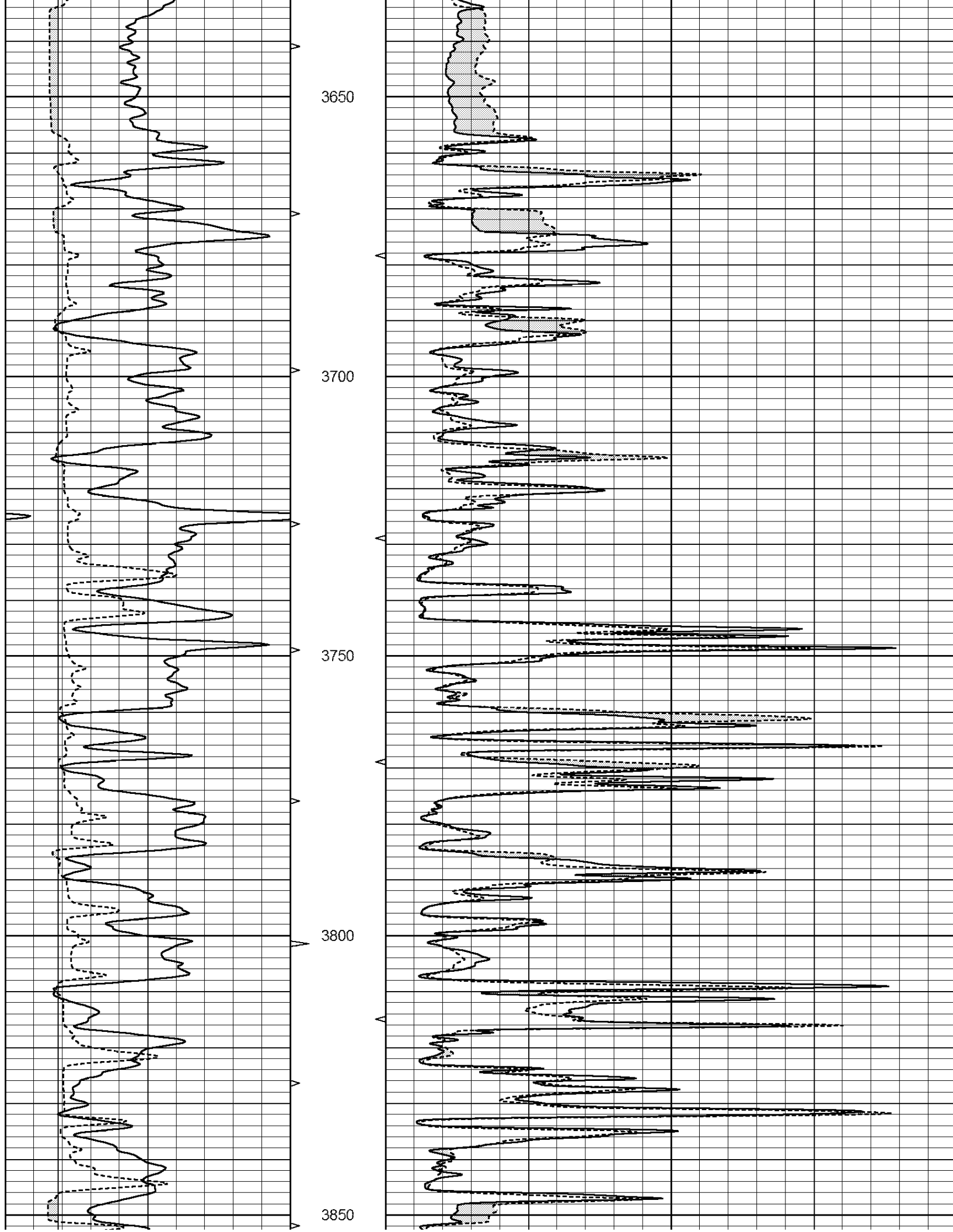
3450

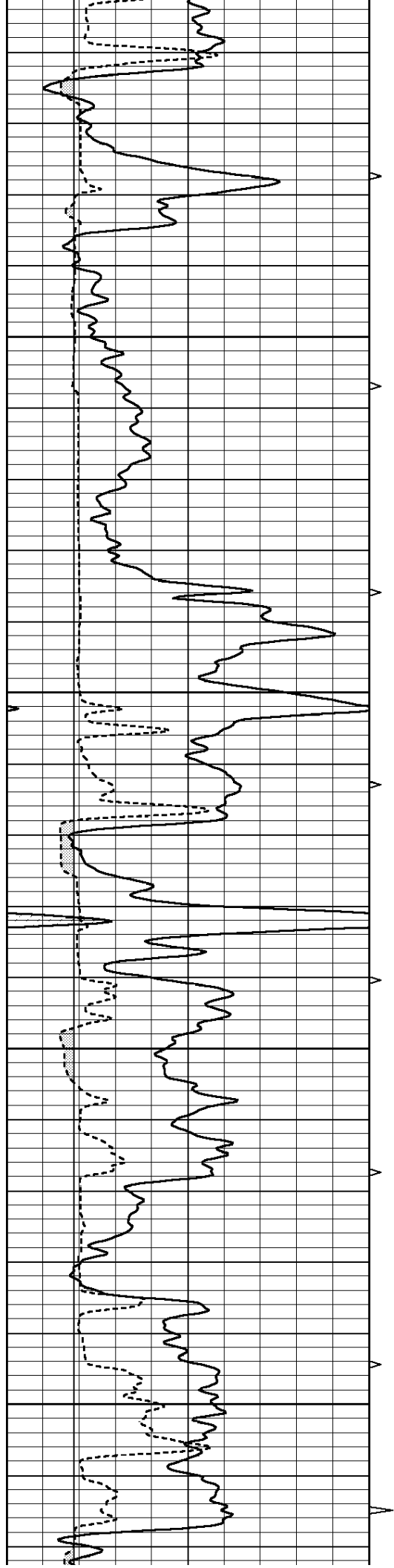
3500

3550

3600





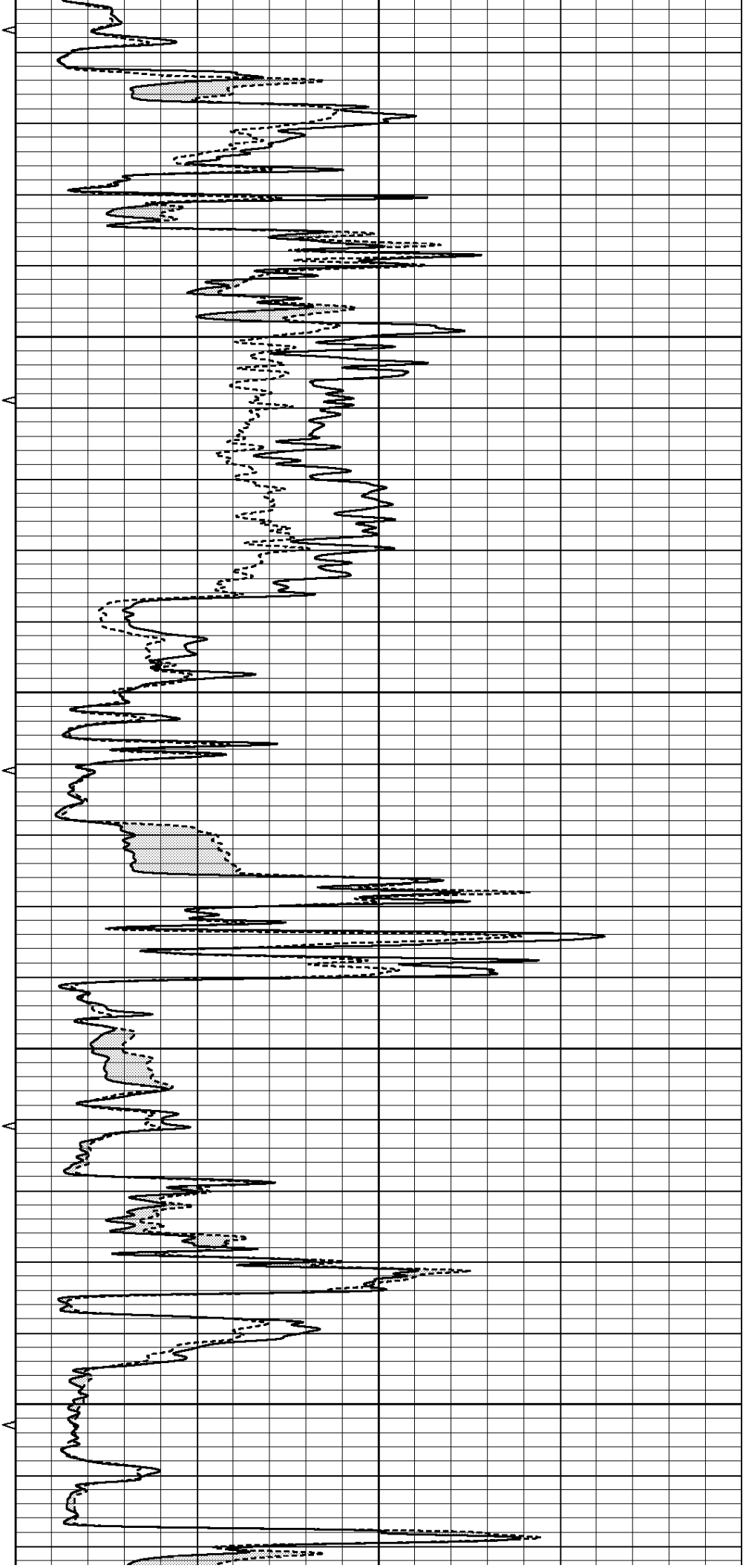


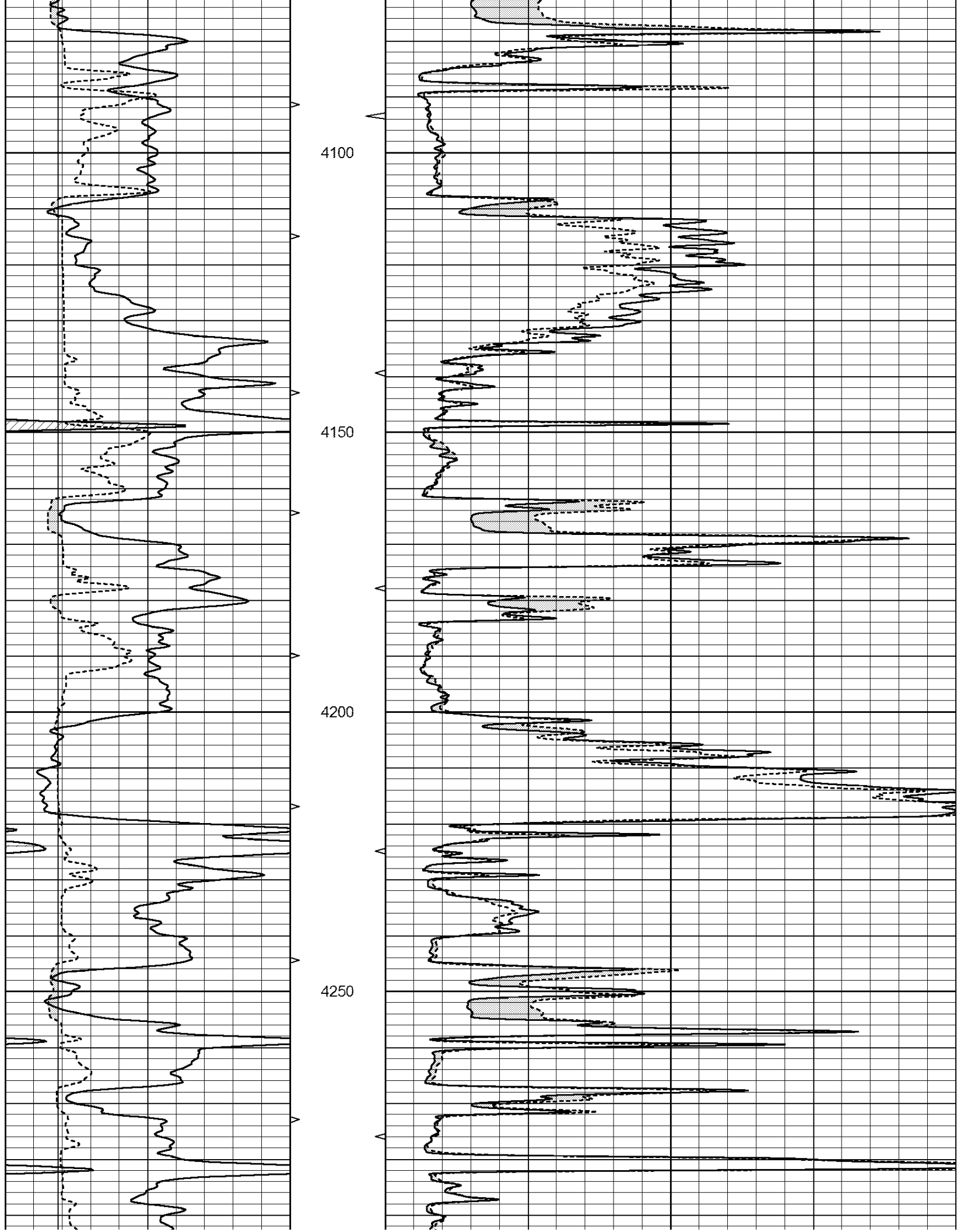
3900

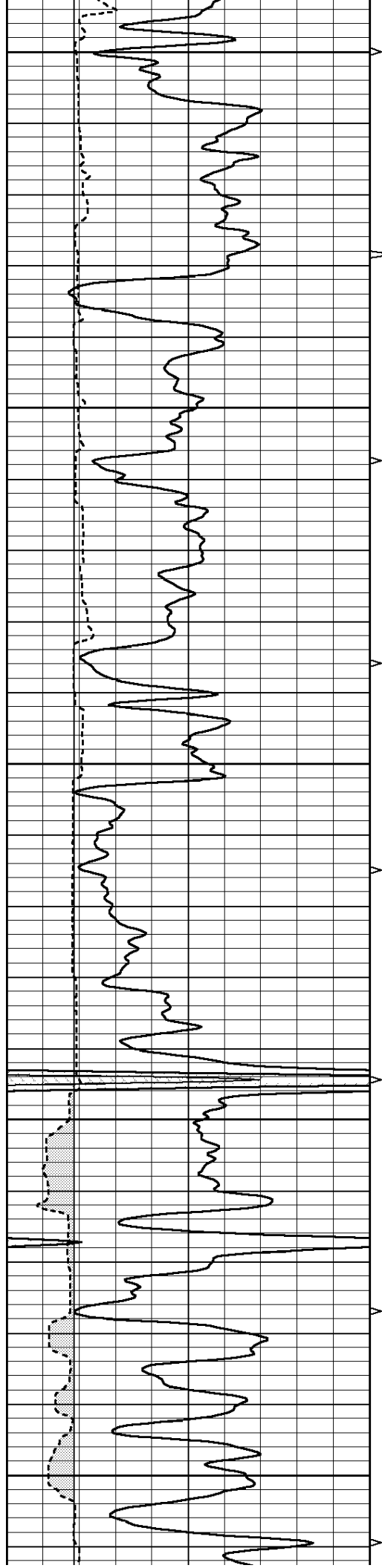
3950

4000

4050







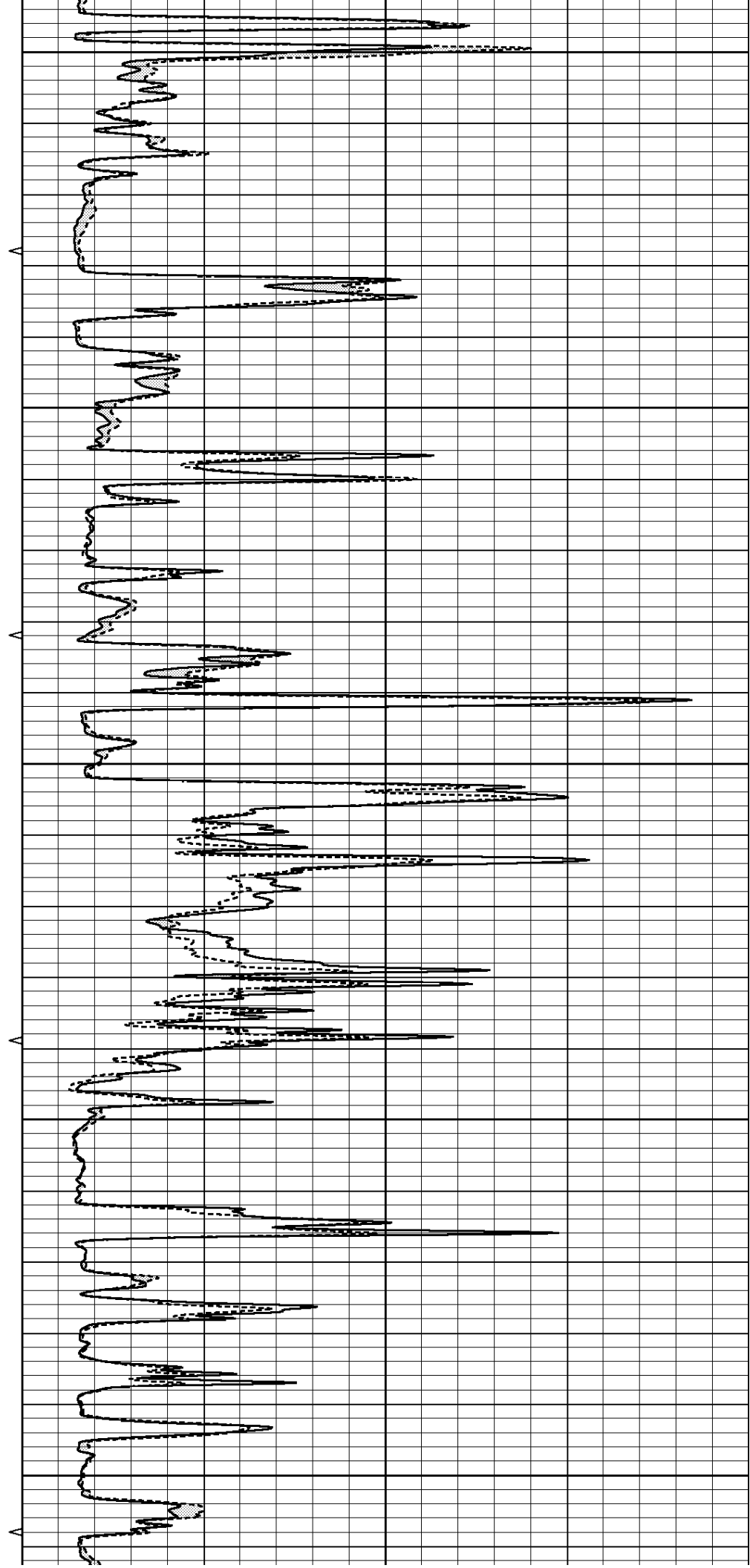
4300

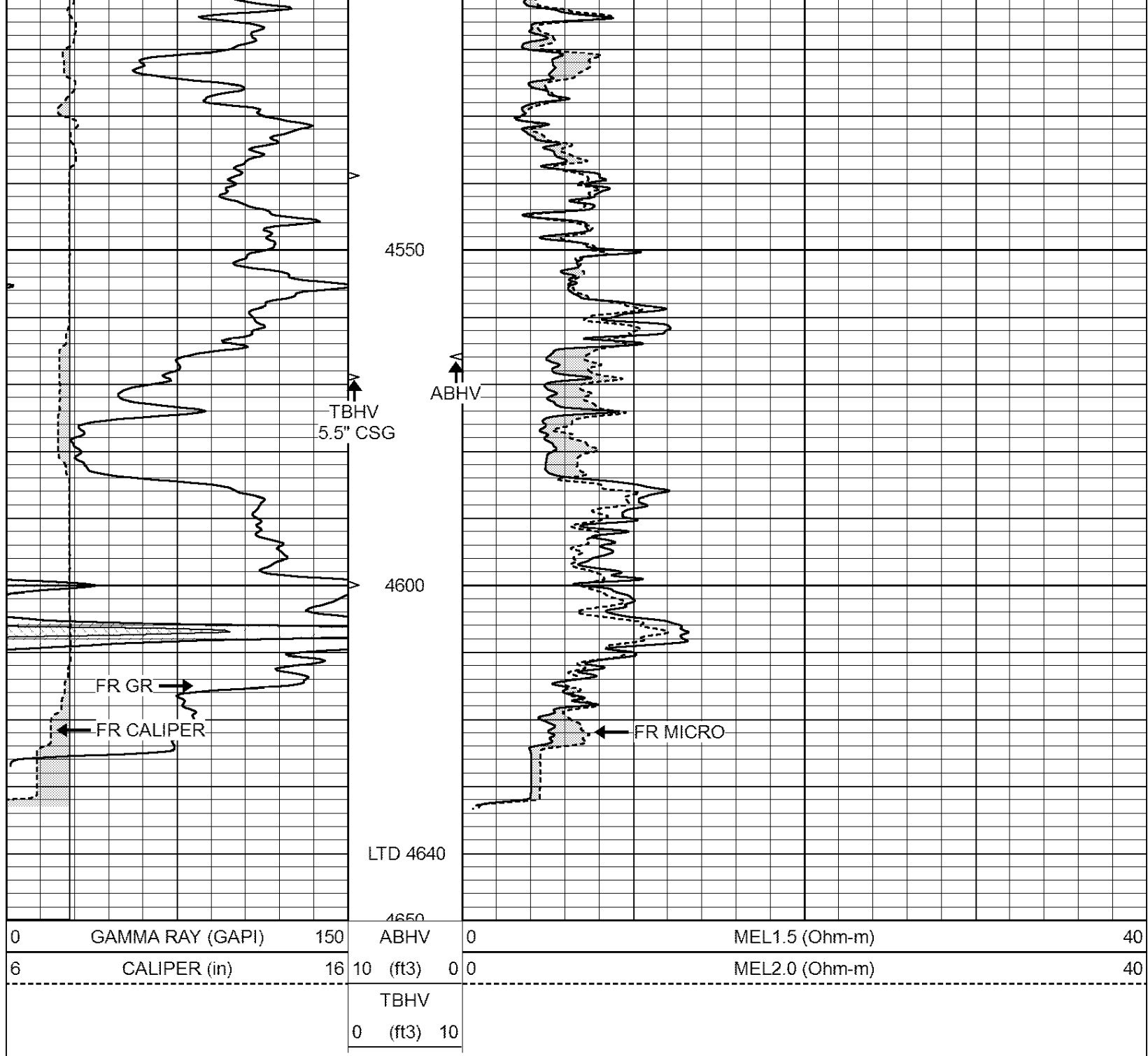
4350

4400

4450

4500

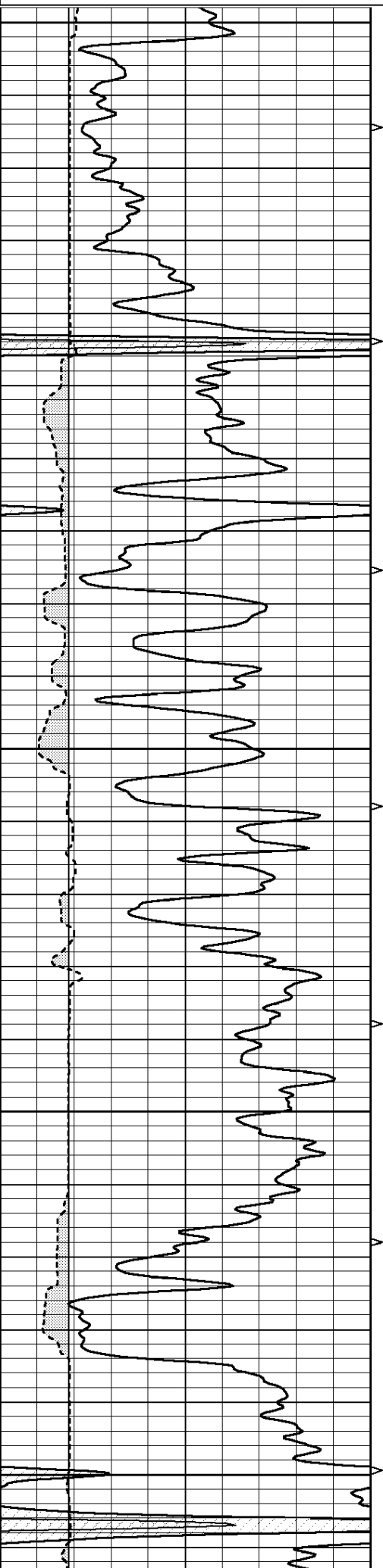




# REPEAT SECTION

Database File: 26431ddn.db  
 Dataset Pathname: pass6.3  
 Presentation Format: \_micro  
 Dataset Creation: Thu Jan 15 09:33:36 2015 by Calc Open-Cased 090629  
 Charted by: Depth in Feet scaled 1:240

0	GAMMA RAY (GAPI)	150	ABHV	0	MEL1.5 (Ohm-m)	40
6	CALIPER (in)	16	10 (ft3)	0 0	MEL2.0 (Ohm-m)	40
			TBHV			
			0 (ft3)	10		



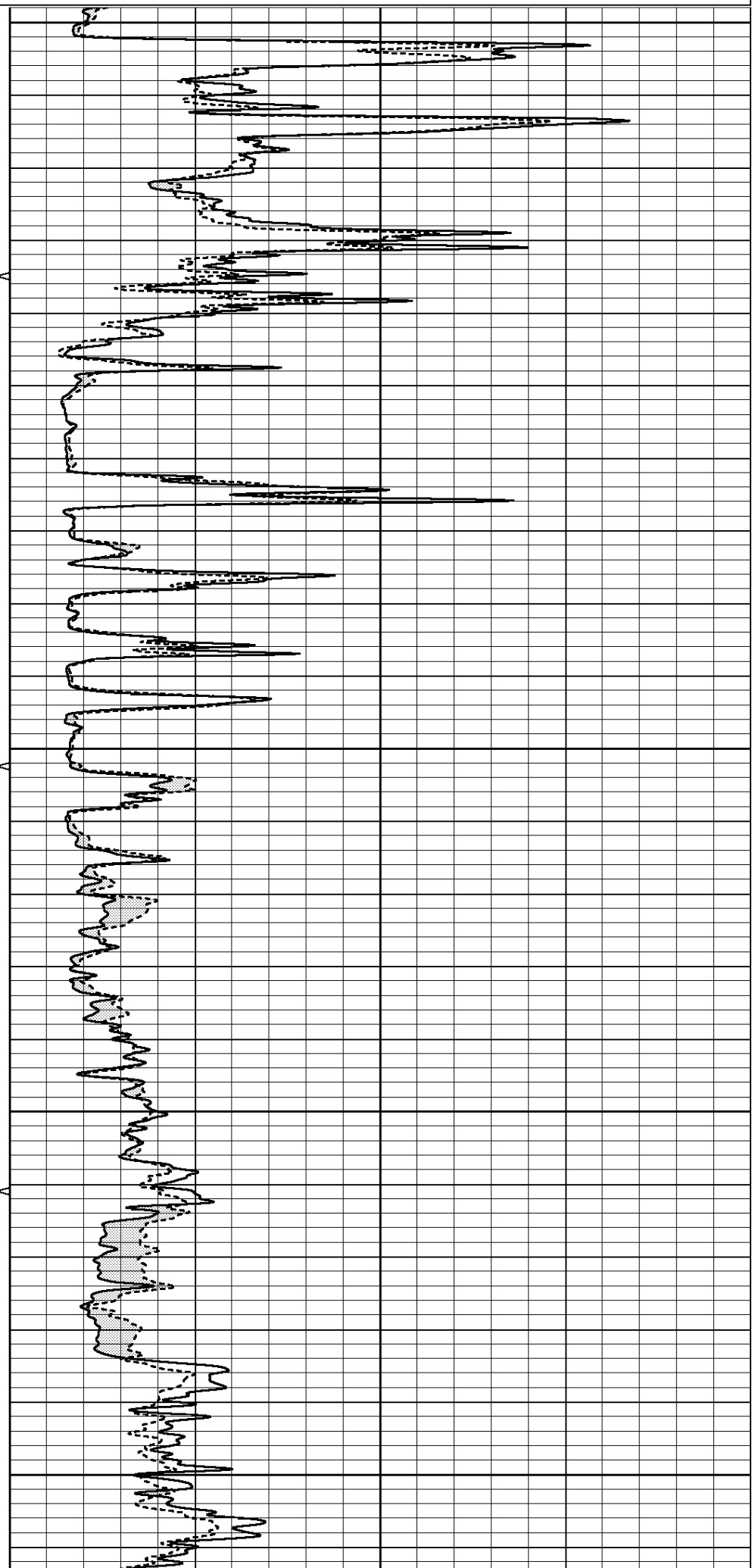
4400

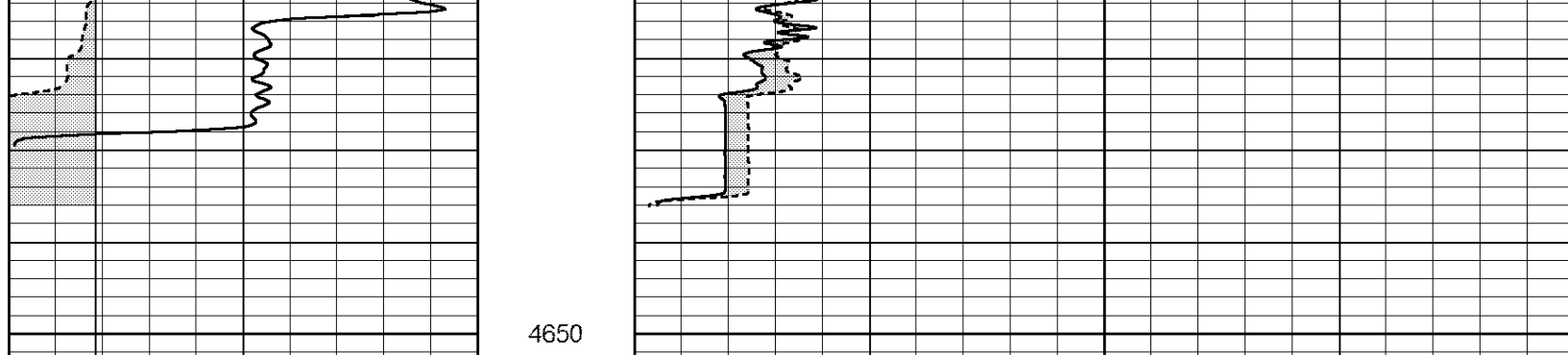
4450

4500

4550

4600





0	GAMMA RAY (GAPI)	150	ABHV	0	MEL1.5 (Ohm-m)	40
6	CALIPER (in)	16	10 (ft3) 0	0	MEL2.0 (Ohm-m)	40
			TBHV			
			0 (ft3) 10			

### Calibration Report

Database File: 26431ddn.db  
 Dataset Pathname: pass7.3  
 Dataset Creation: Thu Jan 15 11:17:04 2015

#### MICRO Calibration Report

Serial Number:	070911	
Tool Model:	ProbeL	
Performed:	Thu Nov 20 18:56:37 2014	
Caliper Calibration:	Gain=4.161	Offset=2.300
References	Low Cal 8.000	High Cal 14.000
Readings	1.333	2.775
1.5" Calibration:	Gain=23.838	Offset=1.000
References	Low Cal 0.000	High Cal 20.000
Readings	0.004	0.843
2" Calibration:	Gain=40.000	Offset=0.650
References	Low Cal 0.000	High Cal 20.000
Readings	0.021	0.810

#### Gamma Ray Calibration Report

Serial Number:	7	
Tool Model:	Probe1	
Performed:	Thu Jan 01 09:43:47 2015	
Calibrator Value:	1.0	GAPI
Background Reading:	0.0	cps
Calibrator Reading:	1.0	cps
Sensitivity:	0.5000	GAPI/cps