



**COMPLETION
& PRODUCTION
SERVICES CO.**

**SONIC
LOG**

Company BOW CREEK OIL COMPANY
Well WILHELM # 1-25
Field WILHELM
County RAWLINGS State KANSAS

Company BOW CREEK OIL COMPANY
Well WILHELM # 1-25
Field WILHELM
County RAWLINGS
State KANSAS

Location: API #: 15-153-21090-00-00
1193' FNL & 1439' FEL
SE - SE - NW - NE
SEC 25 TWP 1S RGE 33W
GROUND LEVEL Elevation 3038
Log Measured From KELLY BUSHING 10' A.G.L.
Drilling Measured From KELLY BUSHING
Other Services
CNL/CDL
DIL/MEL
Elevation
K.B. 3048
D.F. 3046
G.L. 3038

Date	1/15/15		
Run Number	TWO		
Depth Driller	4639		
Depth Logger	4640		
Bottom Logged Interval	4630		
Top Log Interval	250		
Casing Driller	8 5/8 @ 300'		
Casing Logger	308'		
Bit Size	7.875		
Type Fluid in Hole	CHEMICAL MUD		
Density / Viscosity	9.6/65	CHLORIDES 500 PPM	
pH / Fluid Loss	10.0/8.8		
Source of Sample	FLOWLINE		
Rm @ Meas. Temp	1.20 @ 79F		
Rmf @ Meas. Temp	0.90 @ 79F		
Rmc @ Meas. Temp	1.44 @ 79F		
Source of Rmf / Rmc	MEASURED		
Rm @ BHT	0.79 @ 120F		
Time Circulation Stopped	2 HOURS		
Time Logger on Bottom			
Maximum Recorded Temperature	120F		
Equipment Number	3802		
Location	HAYS, KS.		
Recorded By	IAN MABB		
Witnessed By	LYLE HERRMAN		

<<< Fold Here >>>

All interpretations are opinions based on inferences from electrical or other measurements and we cannot and do not guarantee the accuracy or correctness of any interpretation, and we shall not, except in the case of gross or willful negligence on our part, be liable or responsible for any loss, costs, damages, or expenses incurred or sustained by anyone resulting from any interpretation made by any of our officers, agents or employees. These interpretations are also subject to our general terms and conditions set out in our current Price Schedule.

Comments

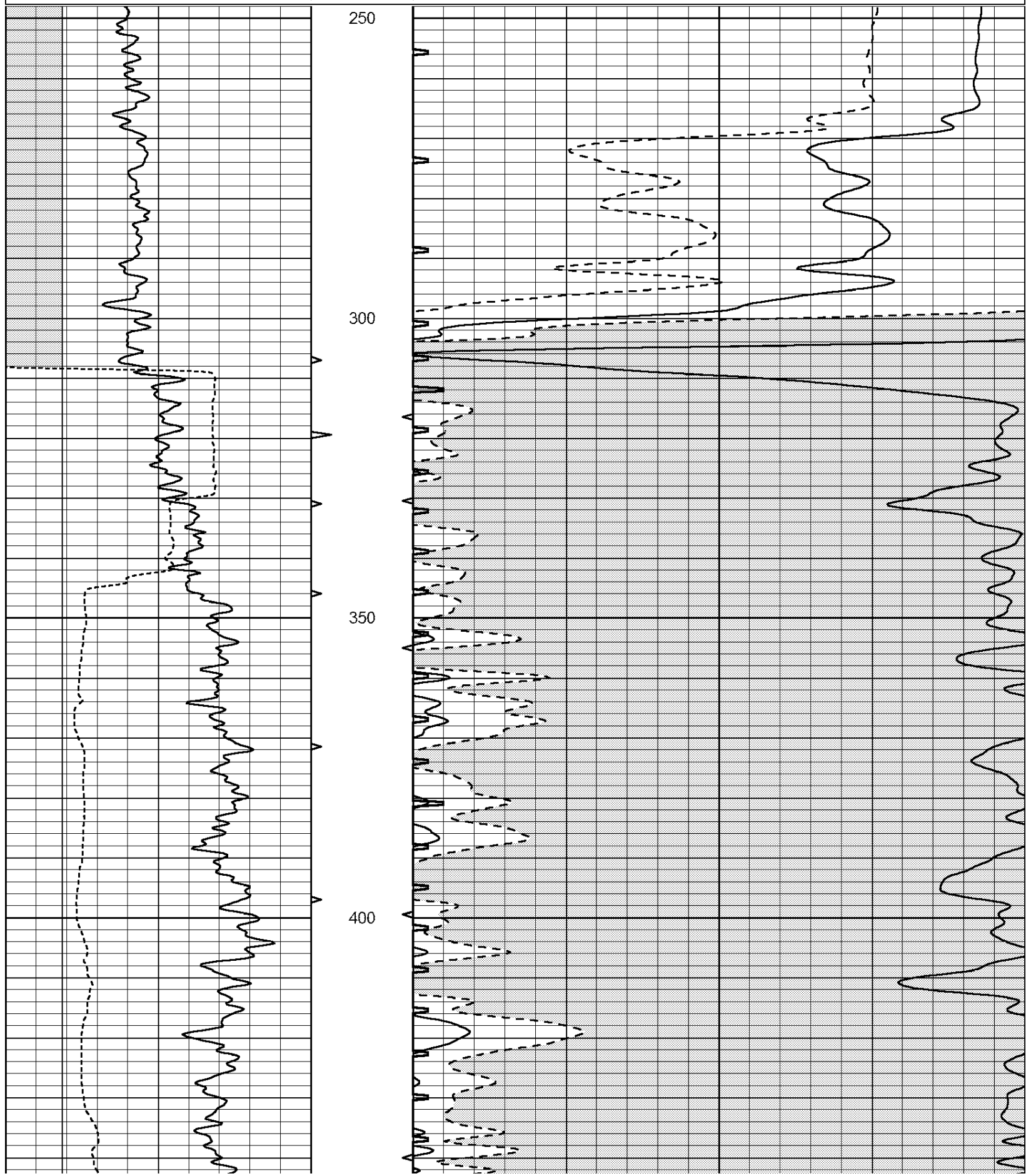
NABORS COMPLETION & PRODUCTION SERVICES CO.

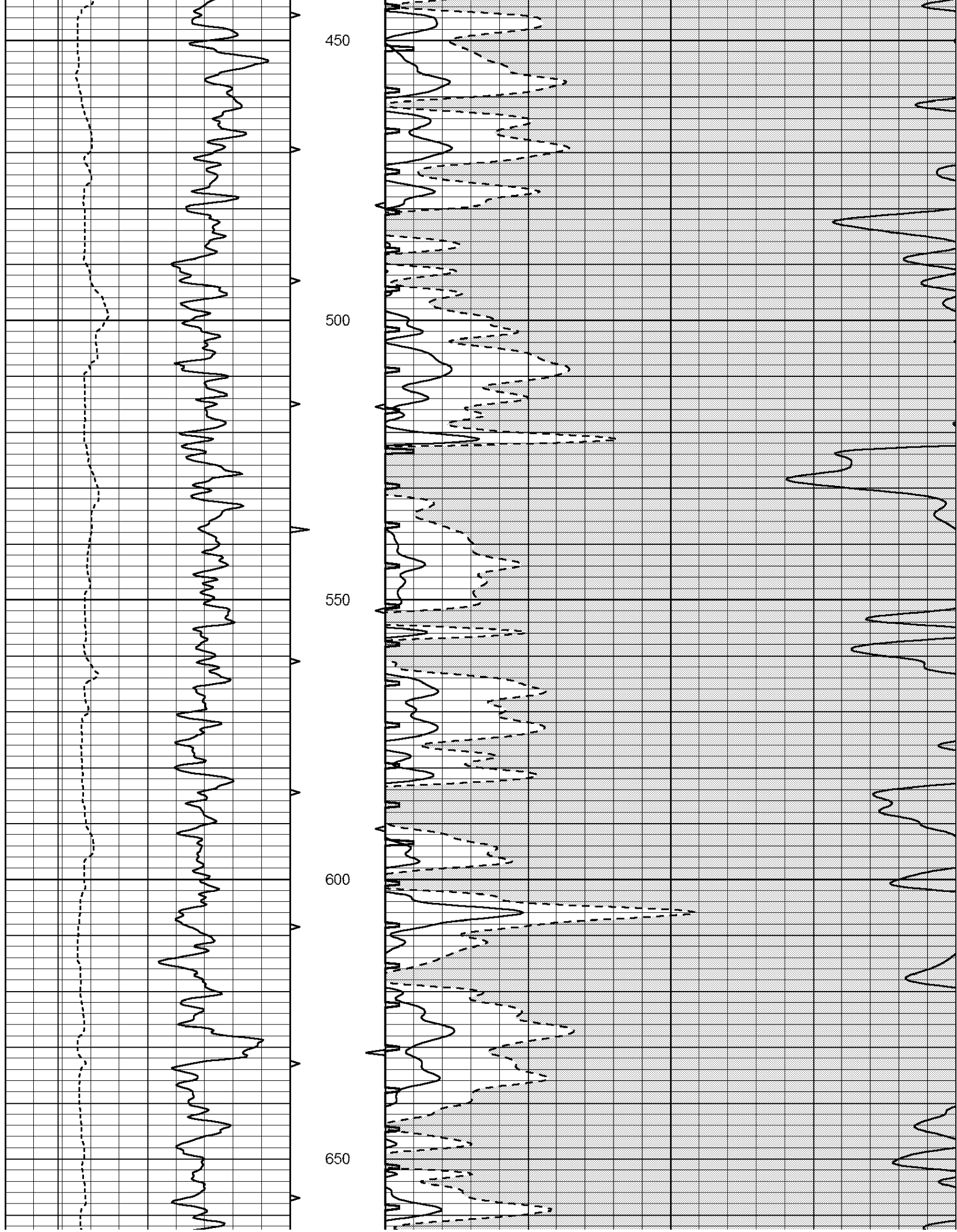
785 (628 - 6395)

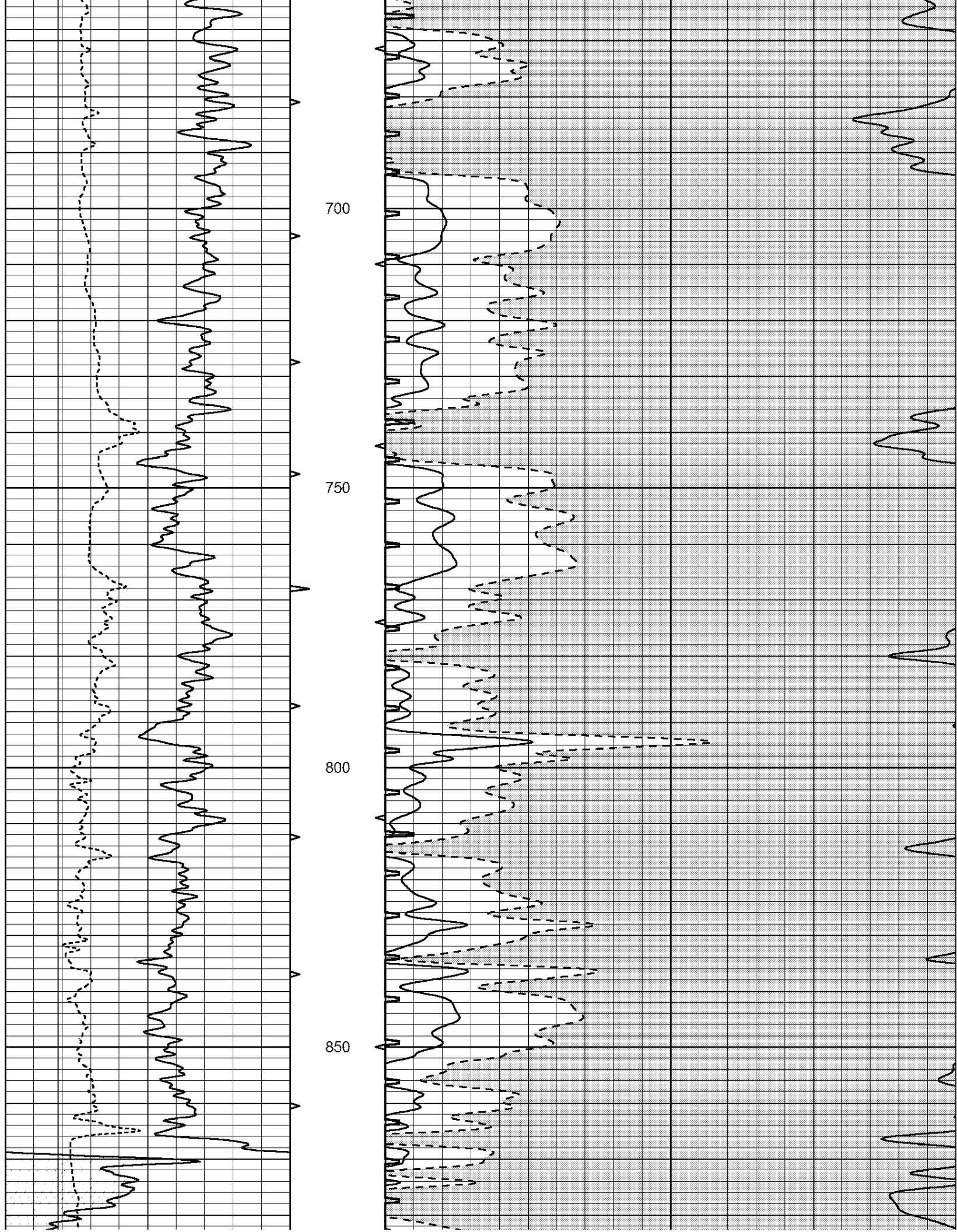
THANK YOU FOR YOUR BUSINESS

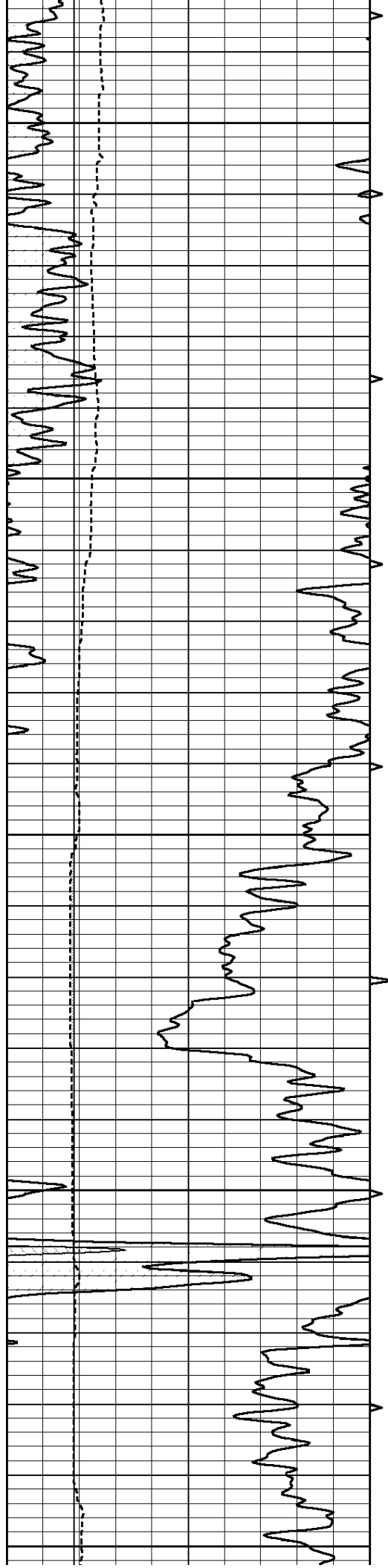
DIRECTIONS : ATWOOD, KS. - EAST TO LUDELL RD. - TO THE STOP SIGN - JOG WEST THEN BACK NORTH 5 MILES - WEST INTO

0	GAMMA RAY (GAPI)	150	ABHV	140	DELTA TIME (usec/ft)	40
6	CALIPER (in)	16	10 (ft3) 0	30	SONIC POROSITY (pu)	-10
			TBHV	0	ITT (msec)	20
			0 (ft3) 10			









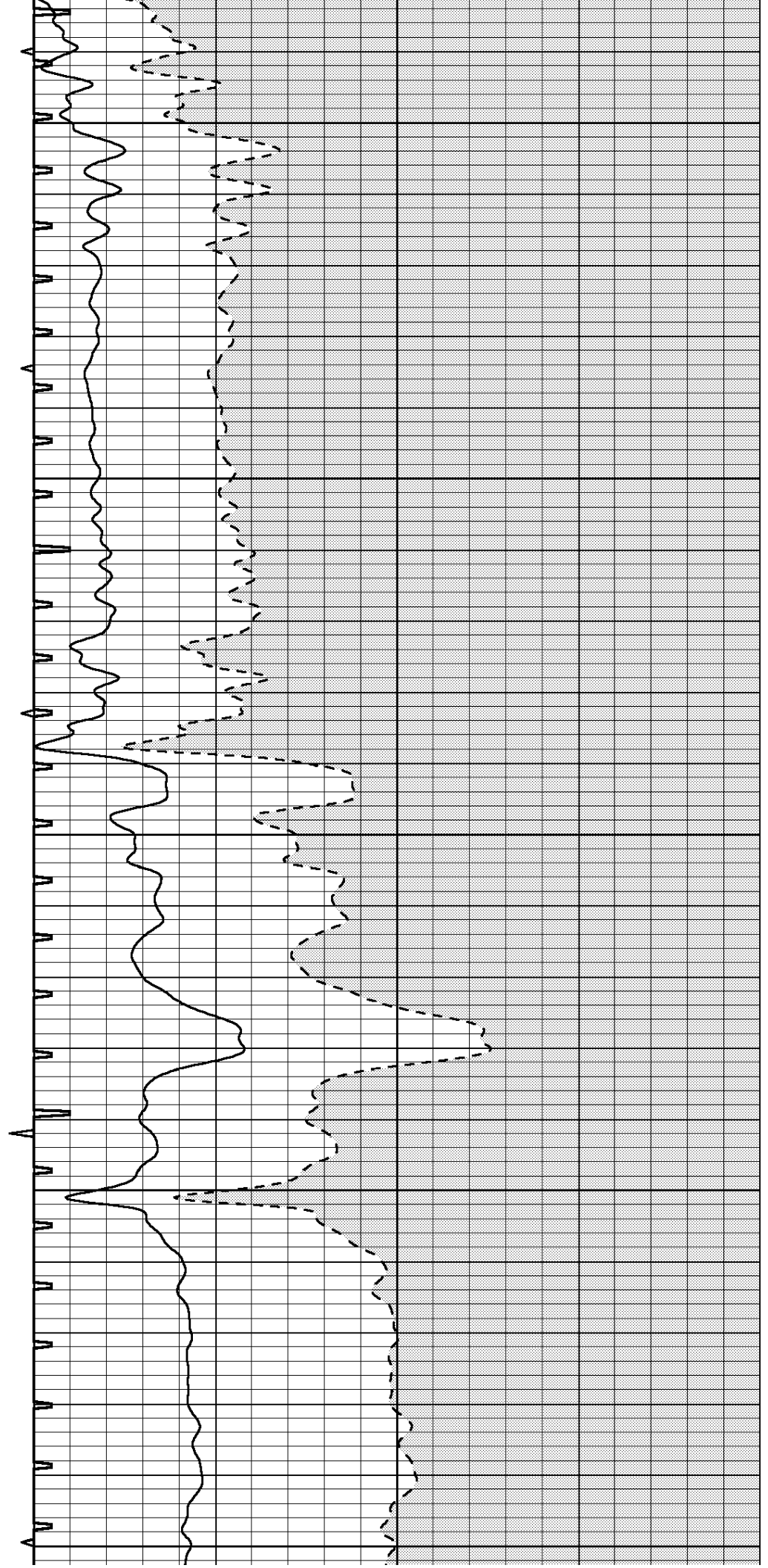
900

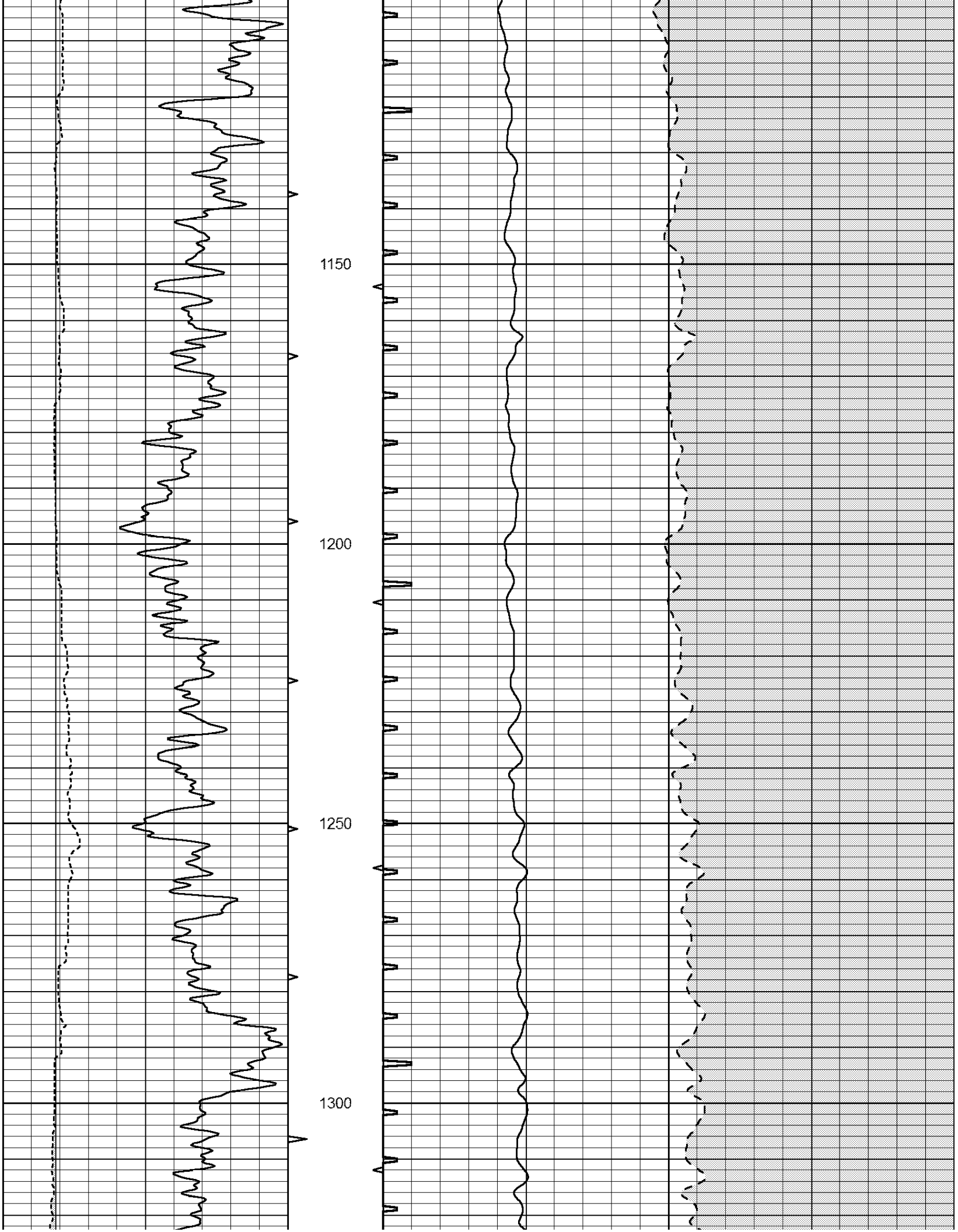
950

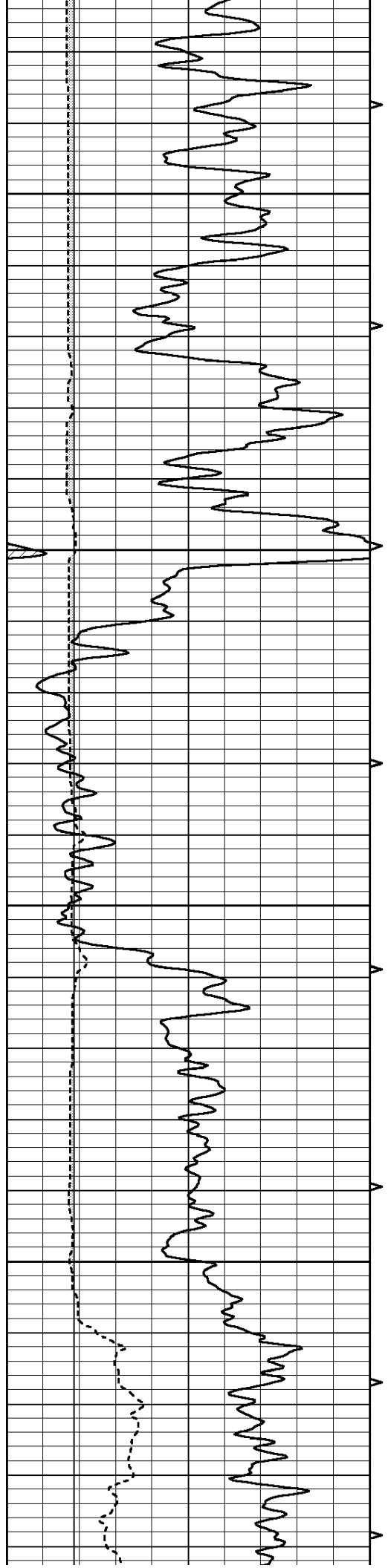
1000

1050

1100





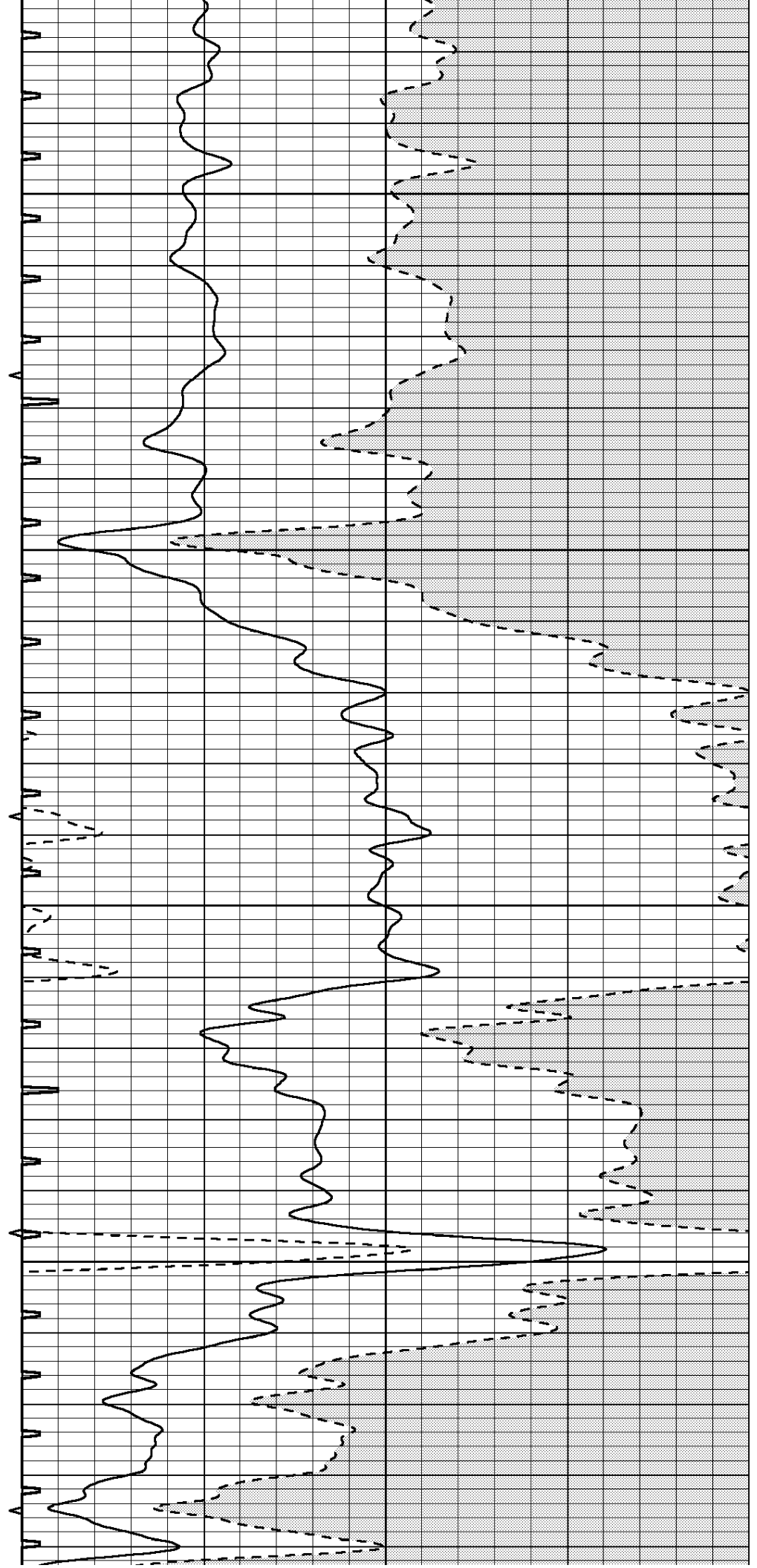


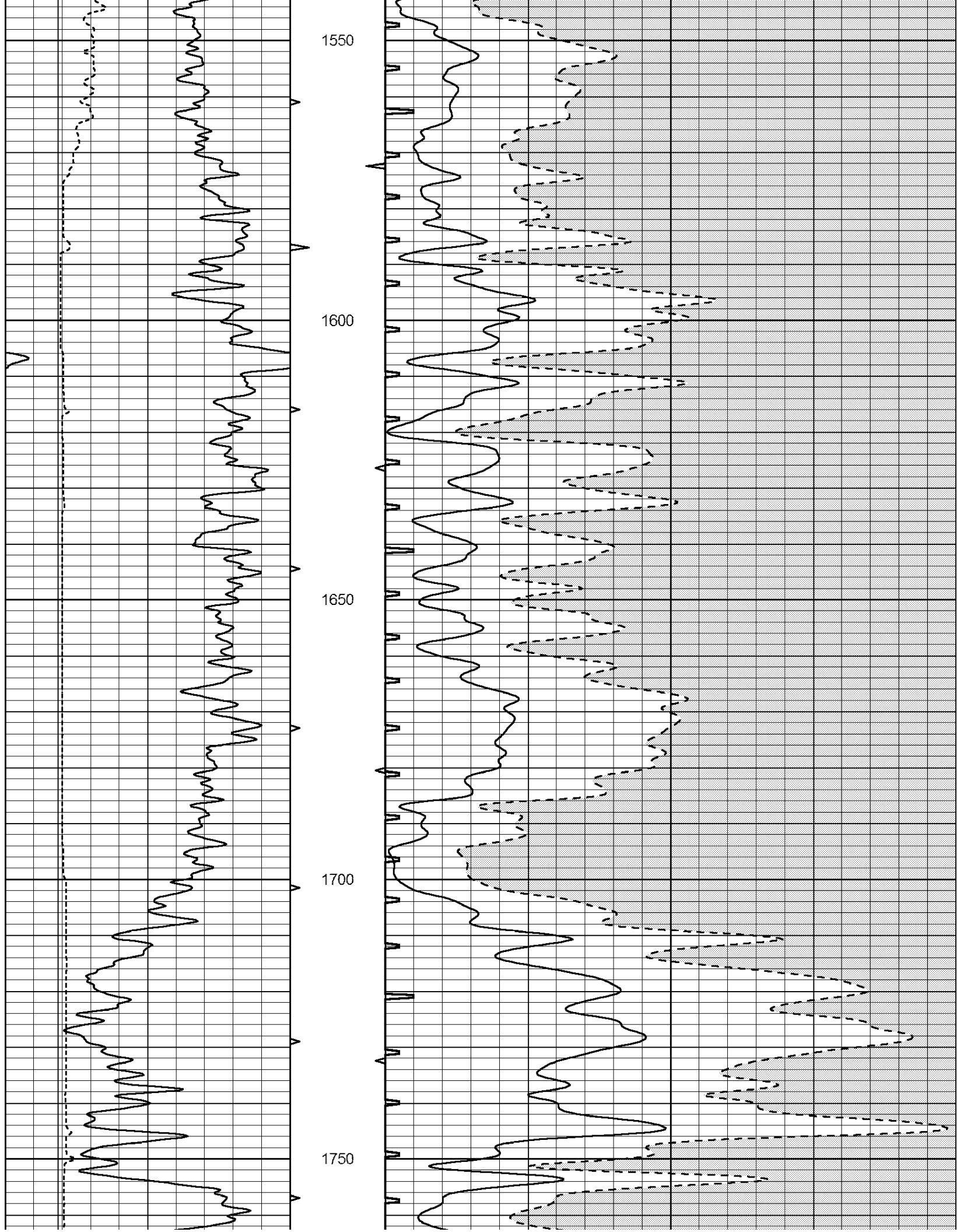
1350

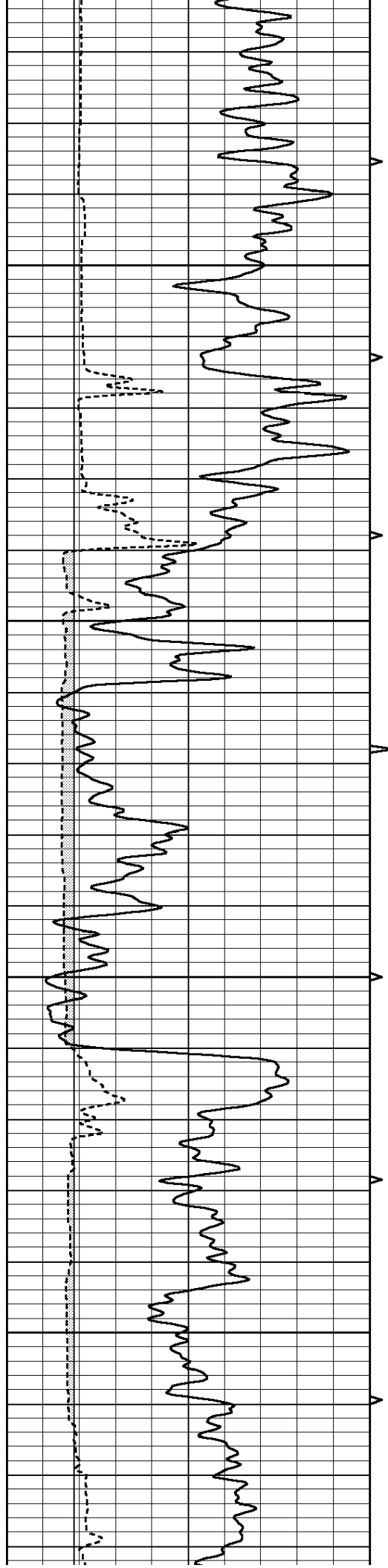
1400

1450

1500





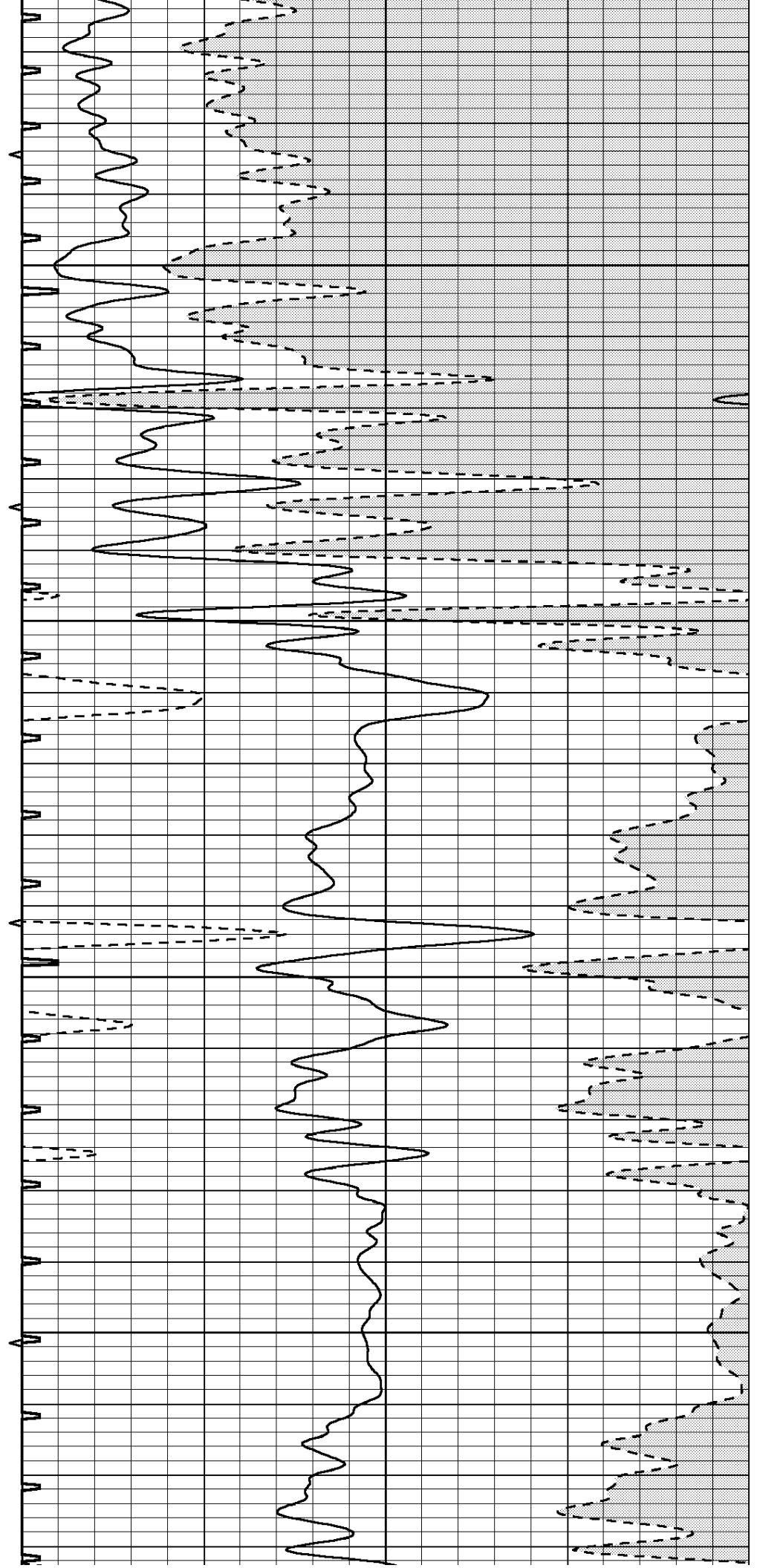


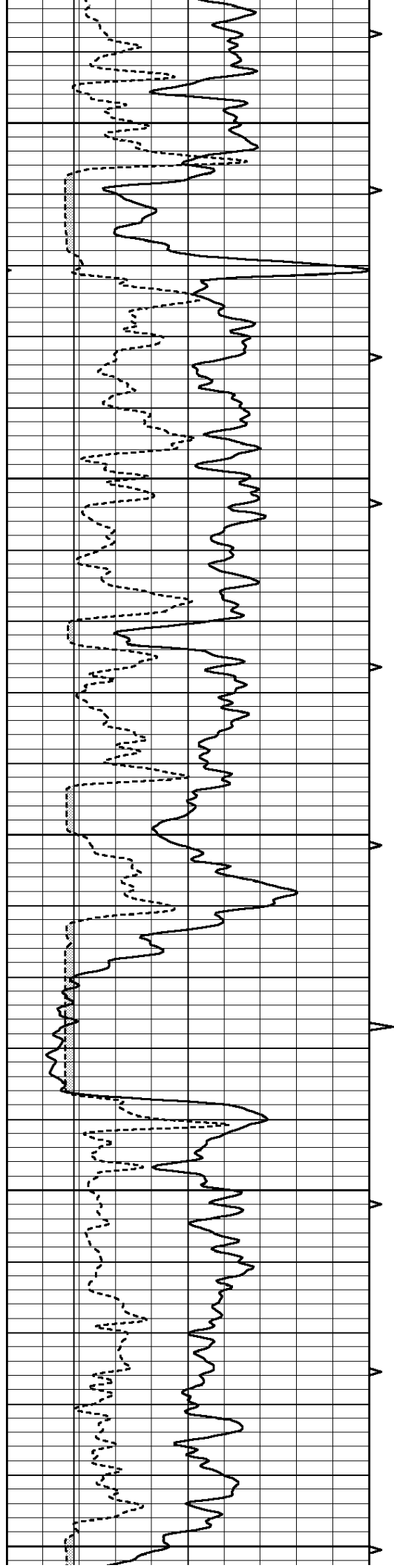
1800

1850

1900

1950





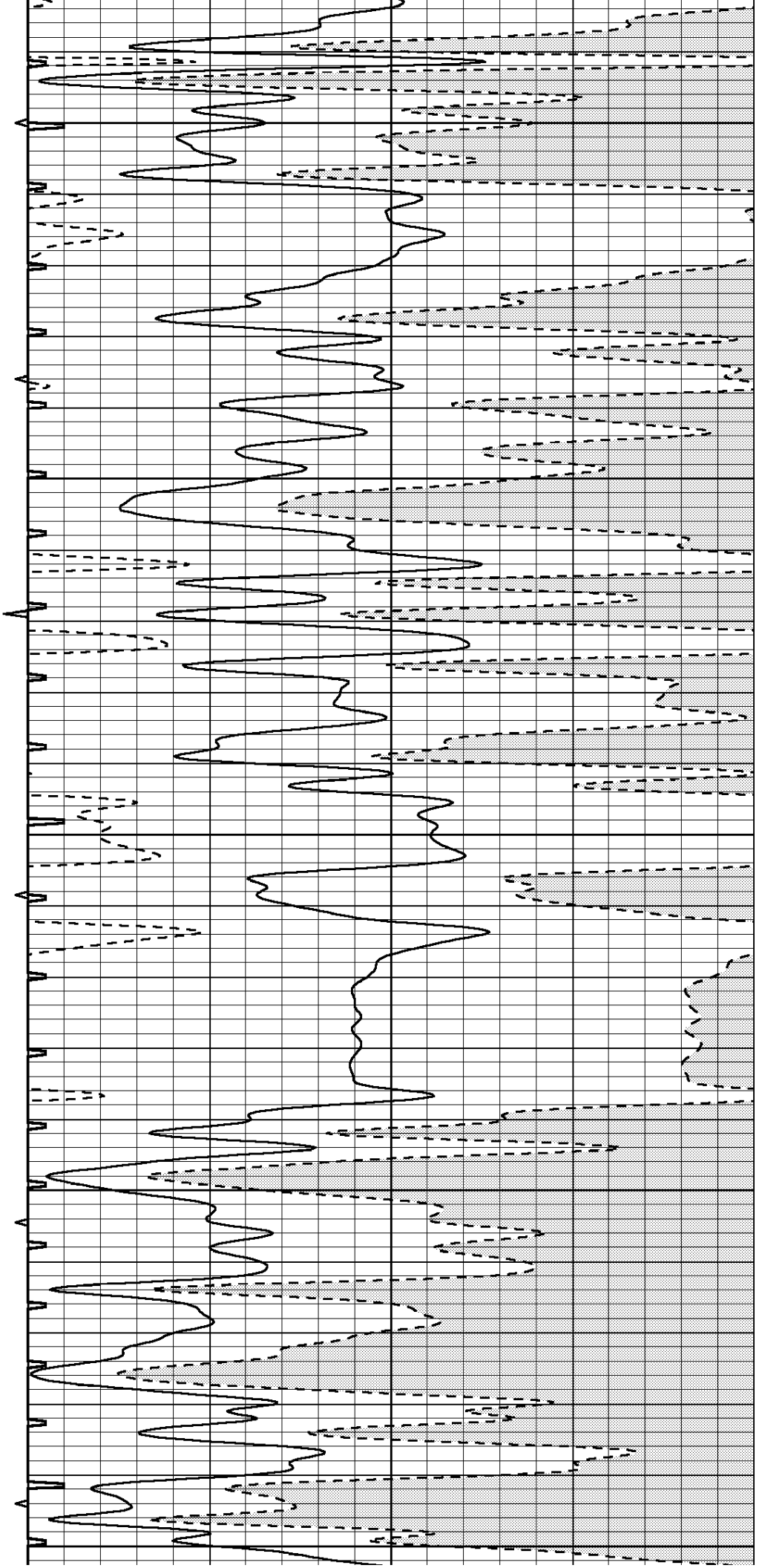
2000

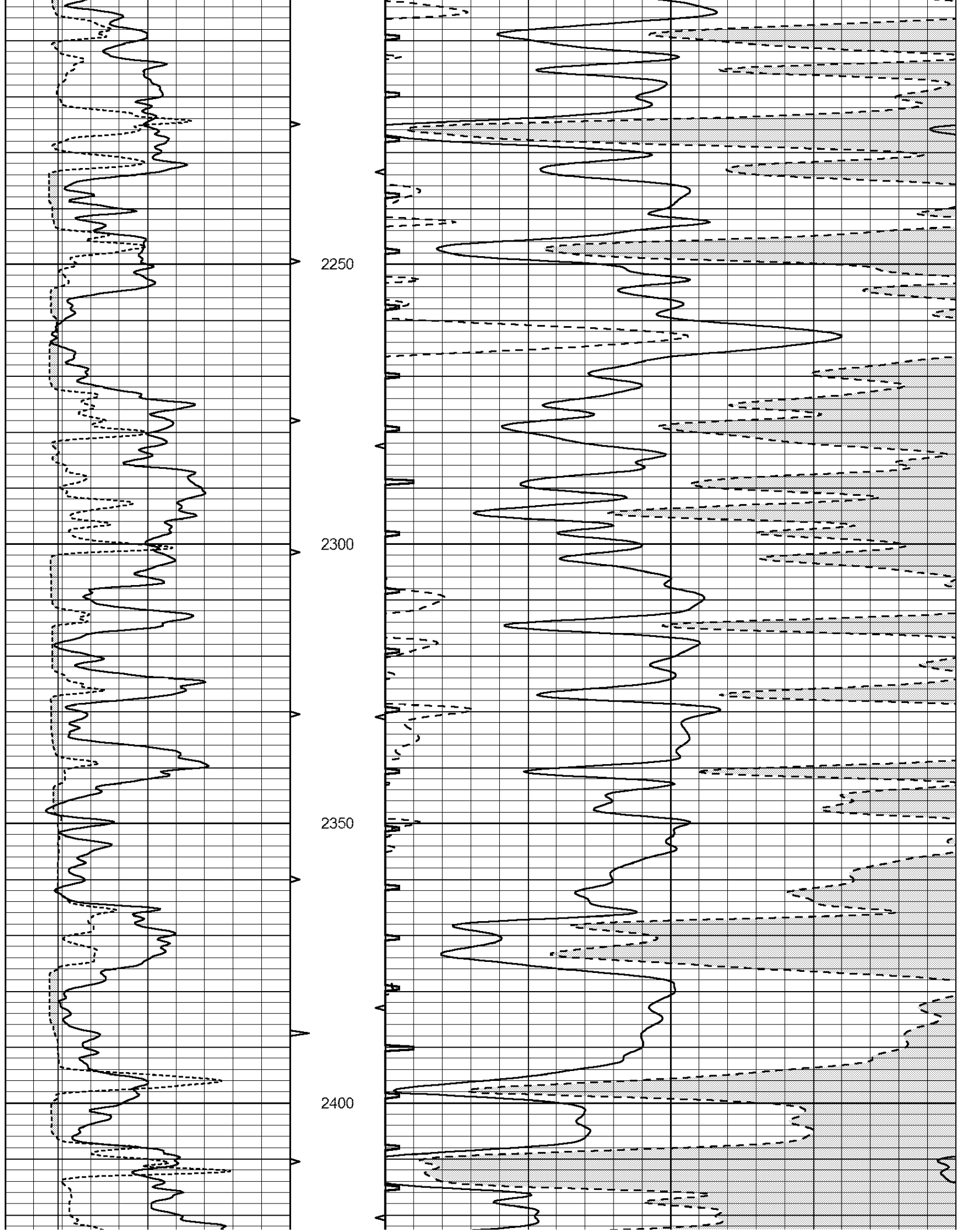
2050

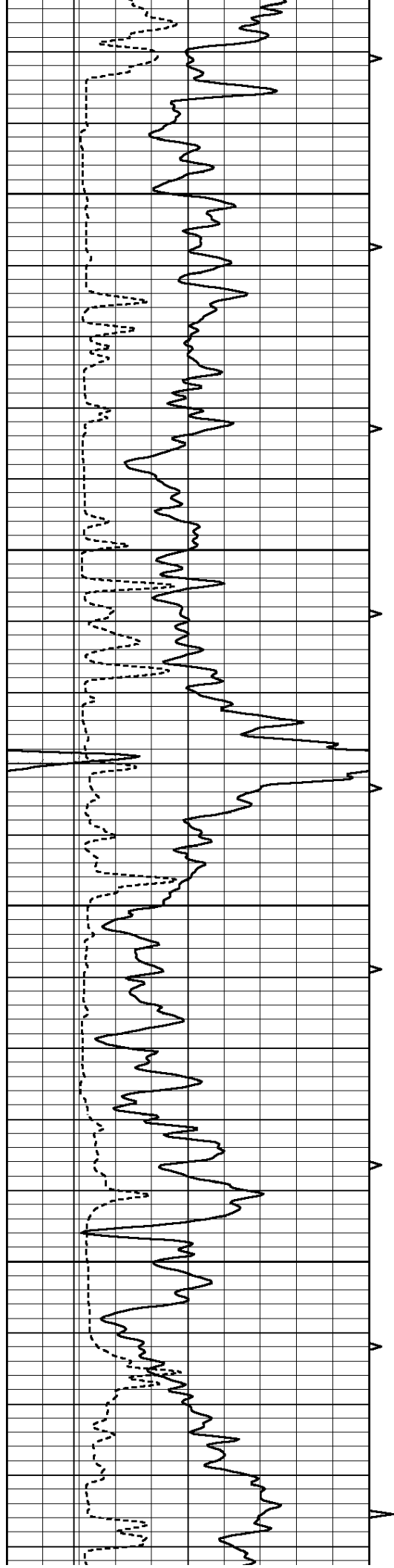
2100

2150

2200





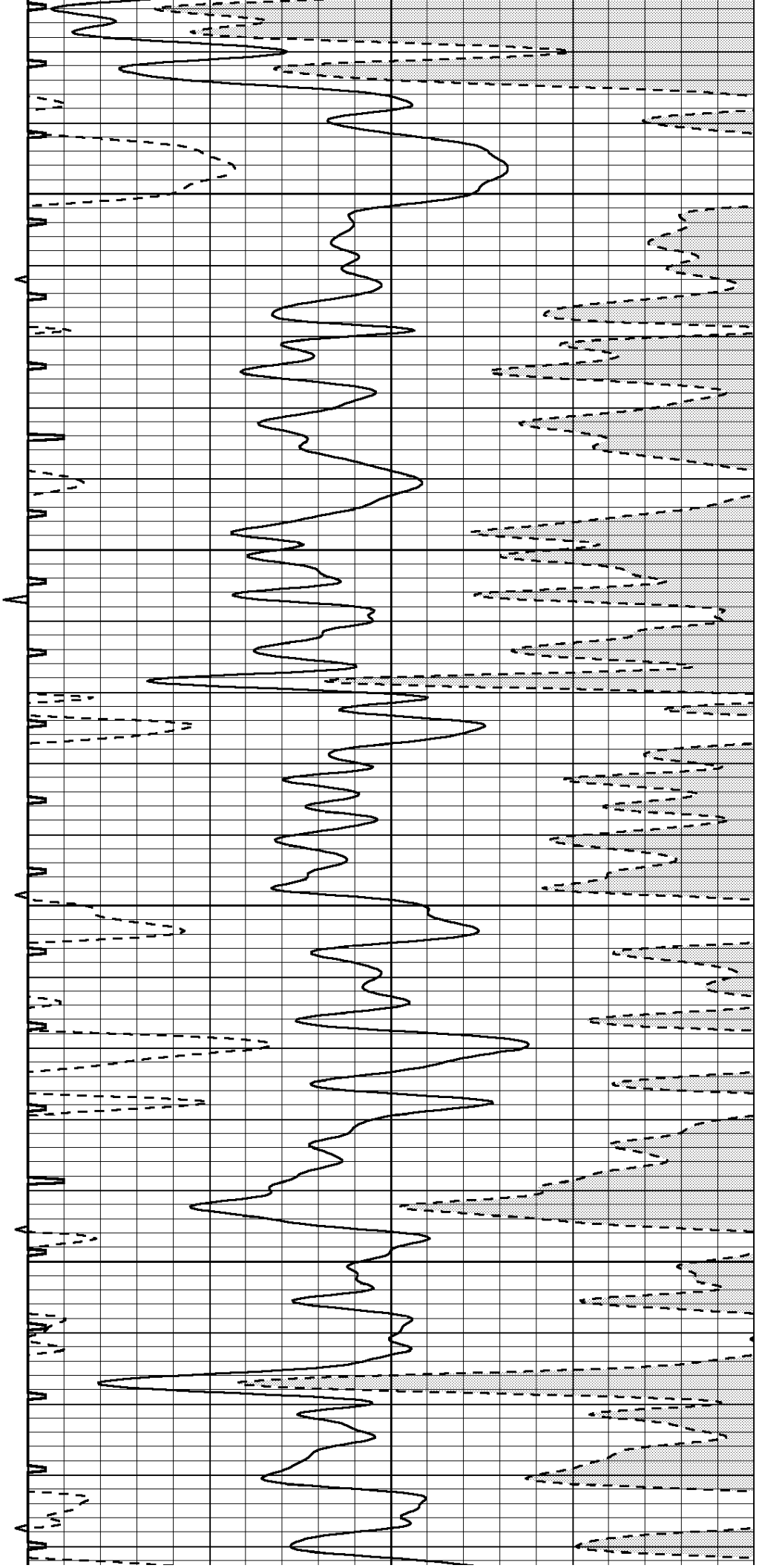


2450

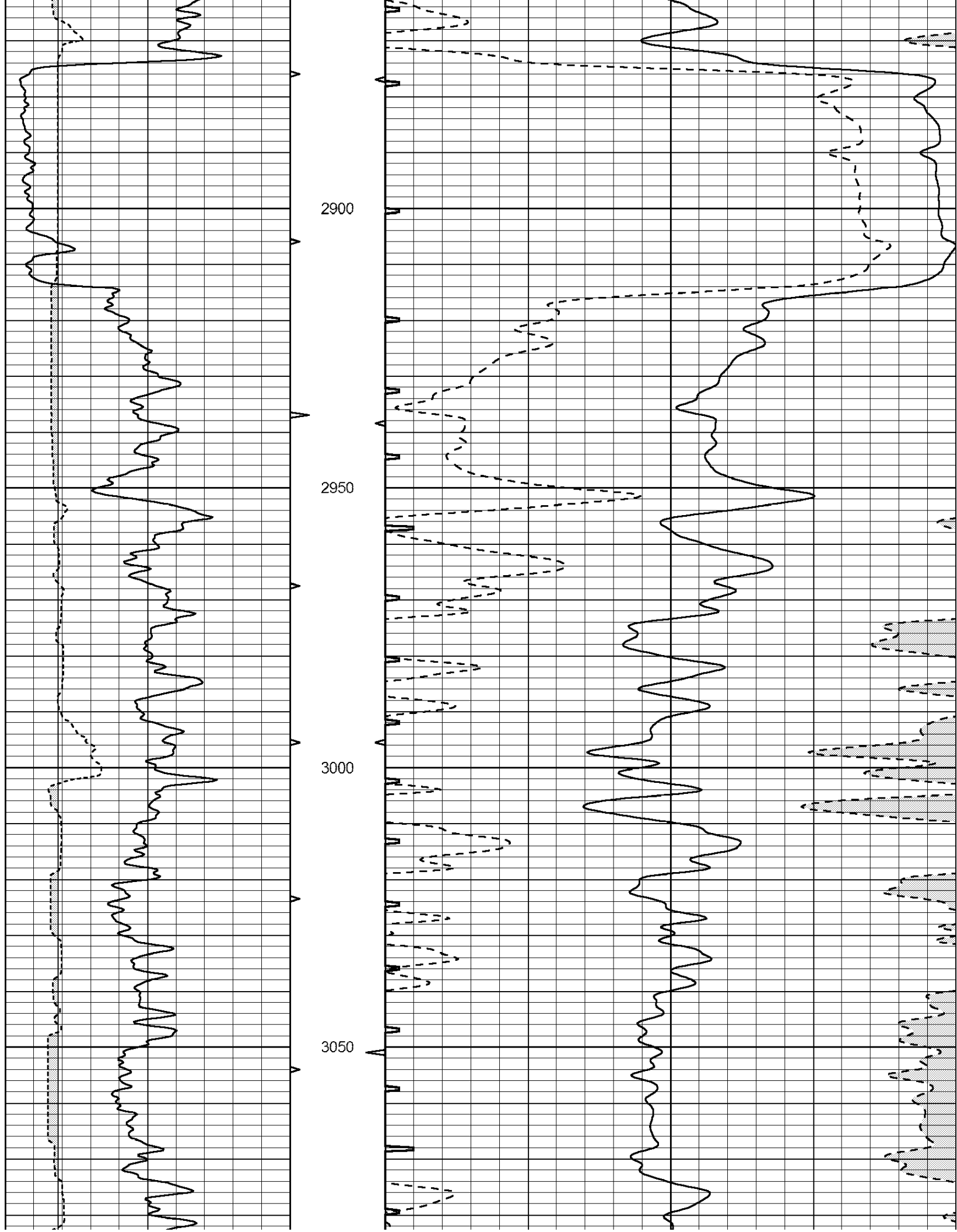
2500

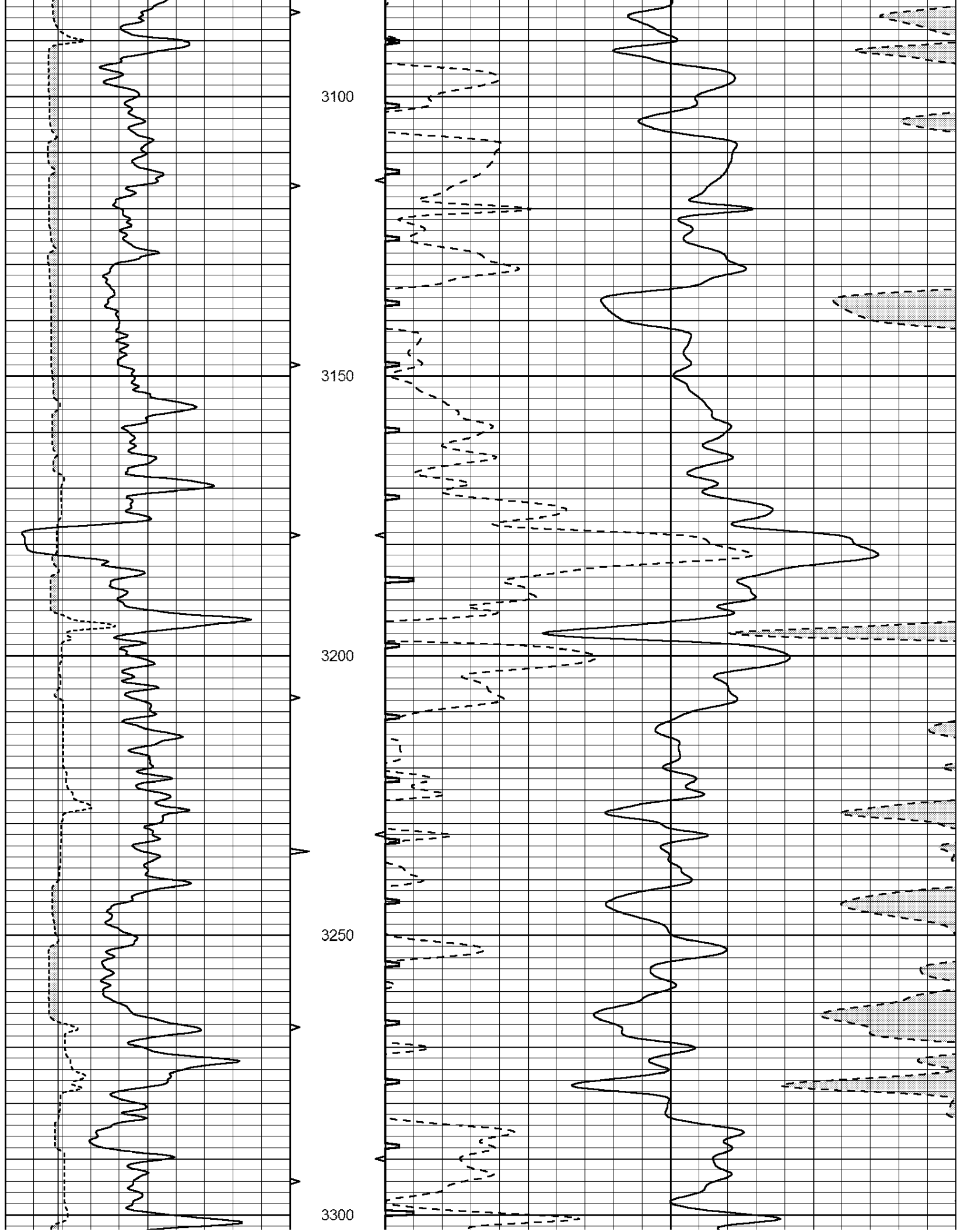
2550

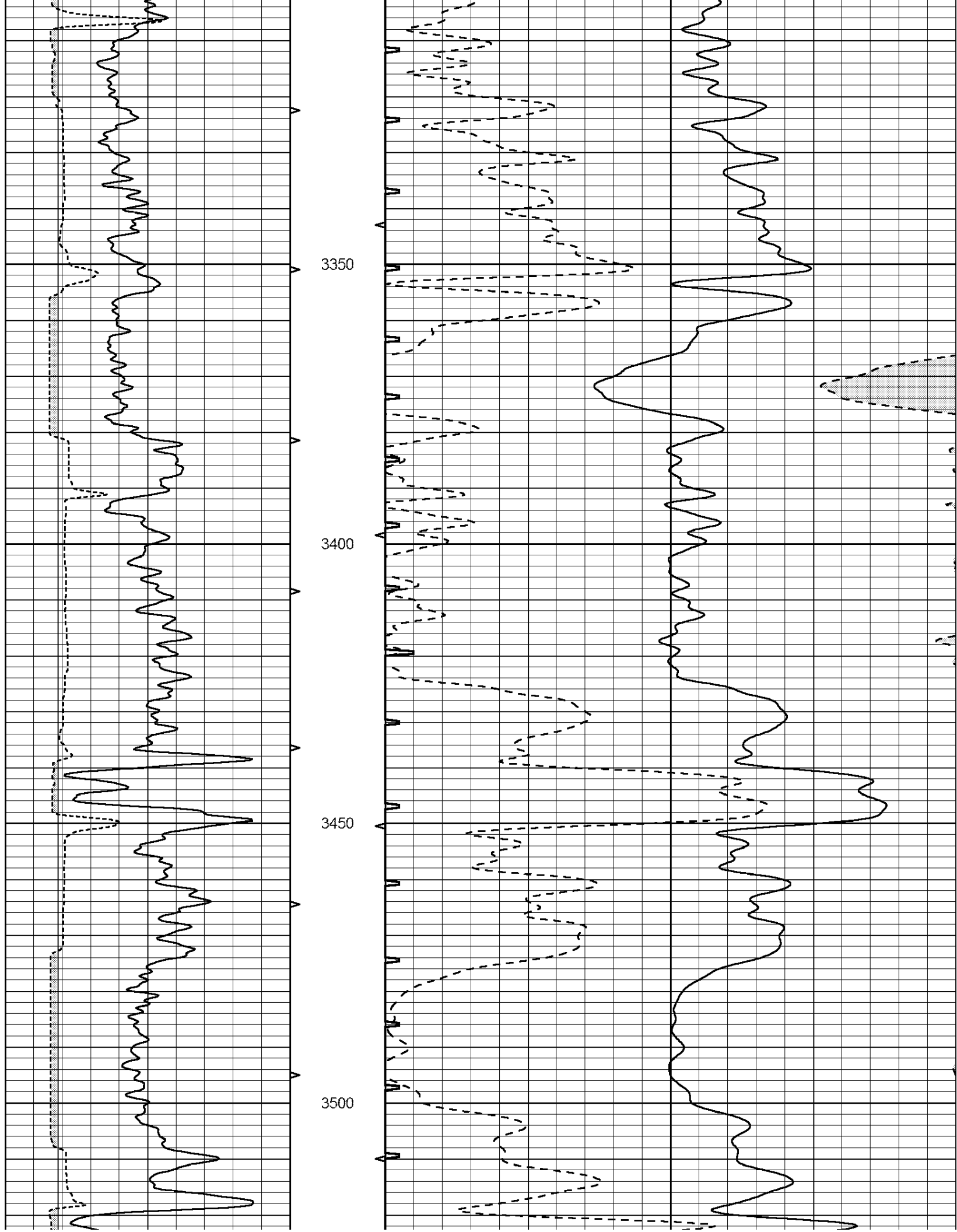
2600

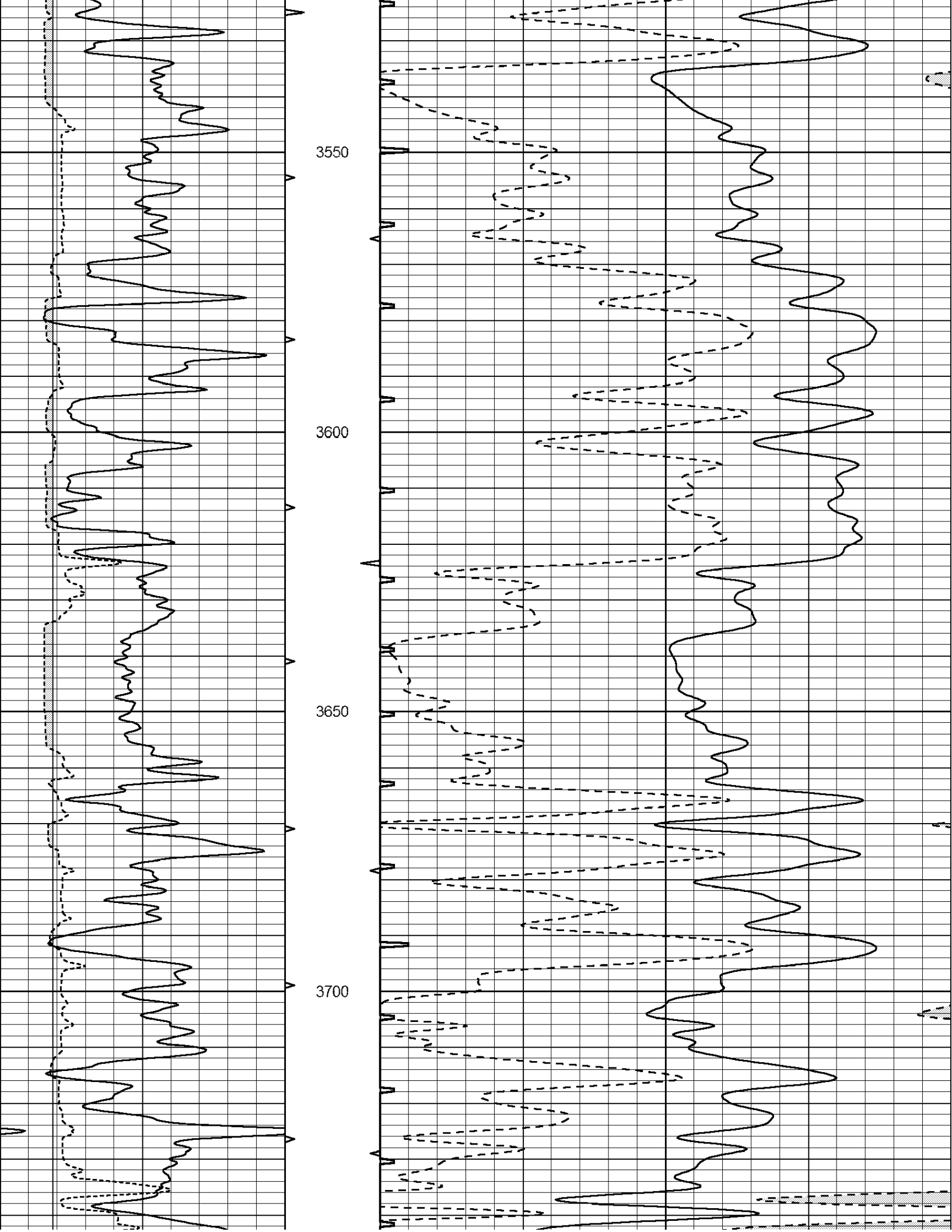


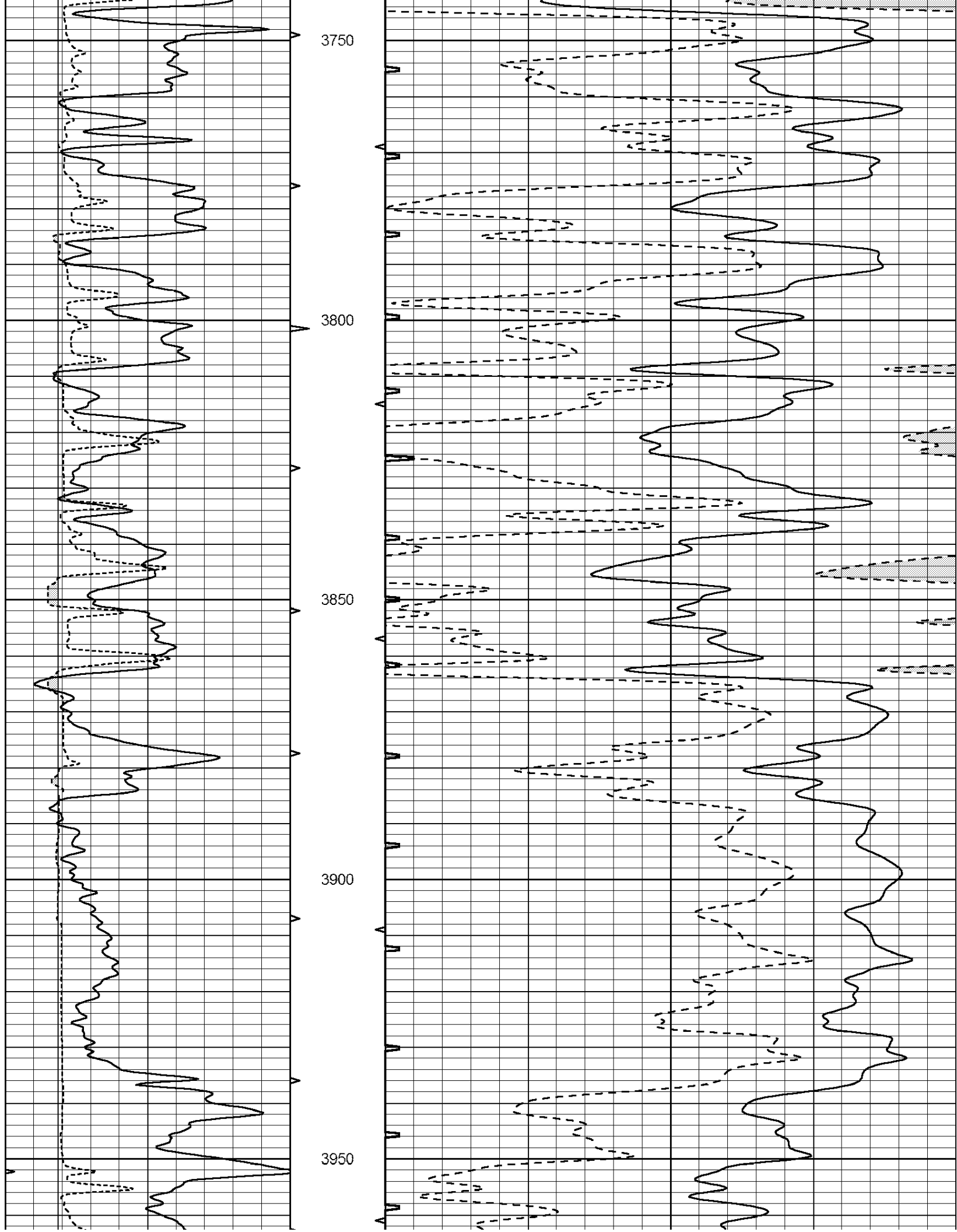


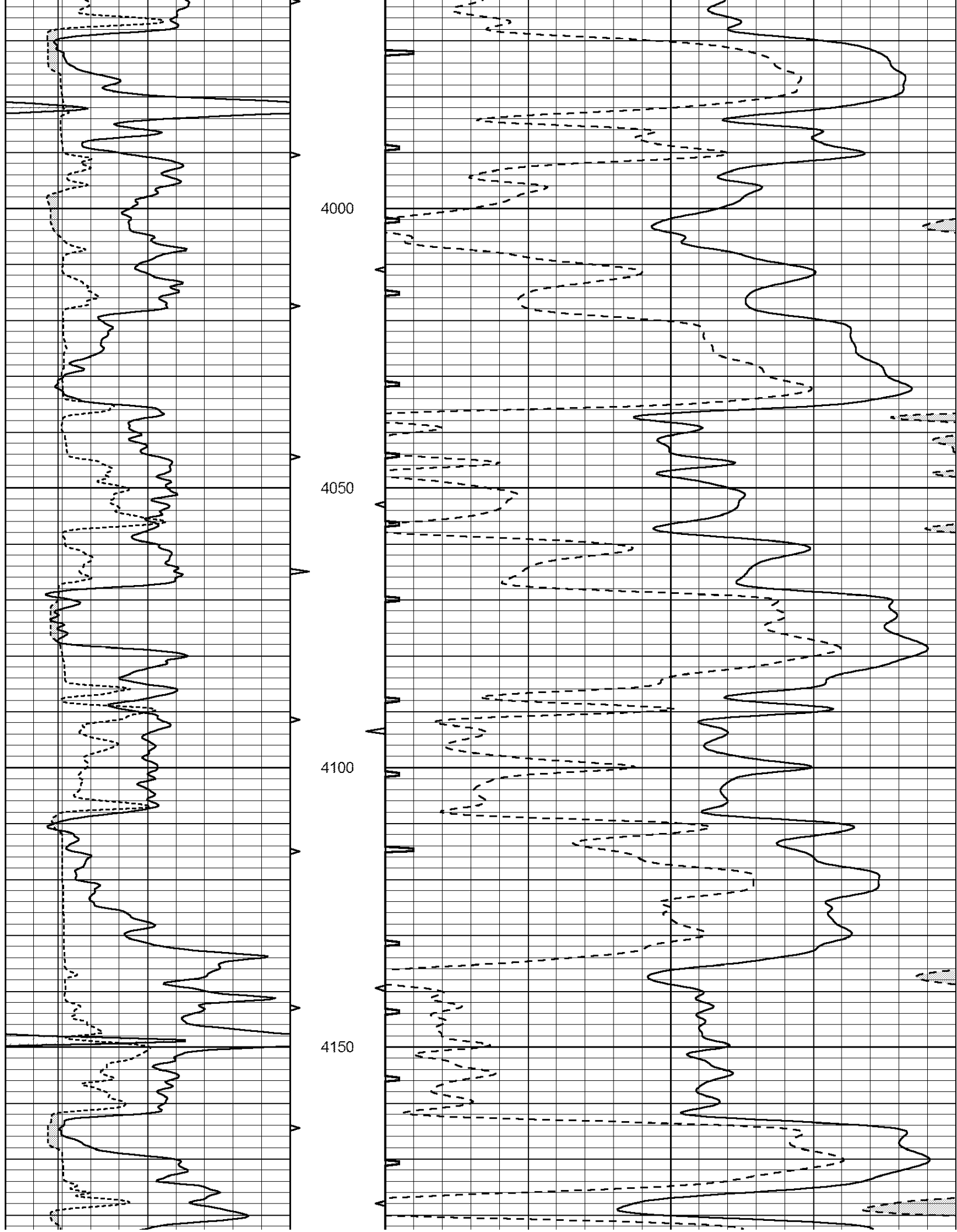


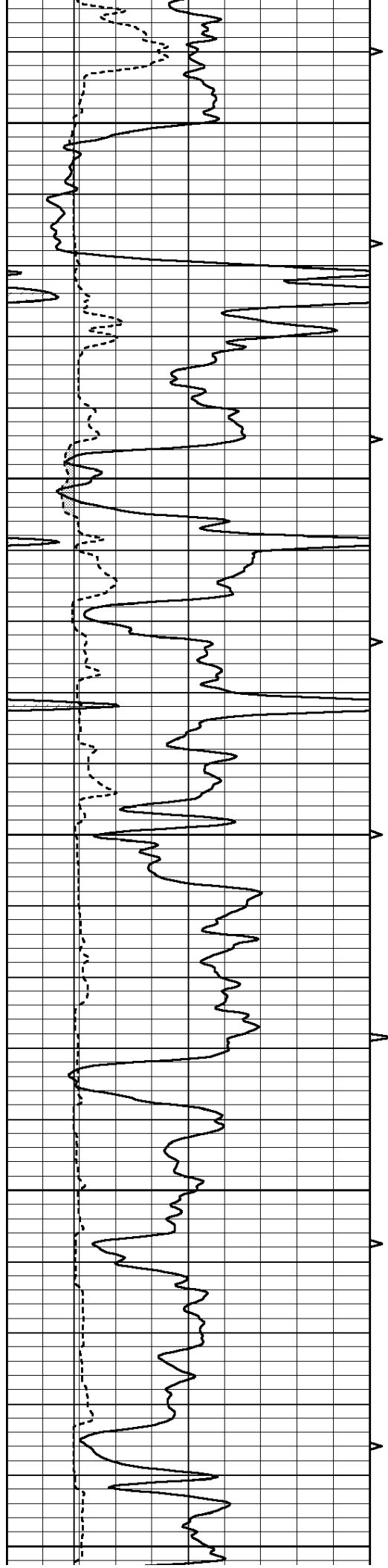












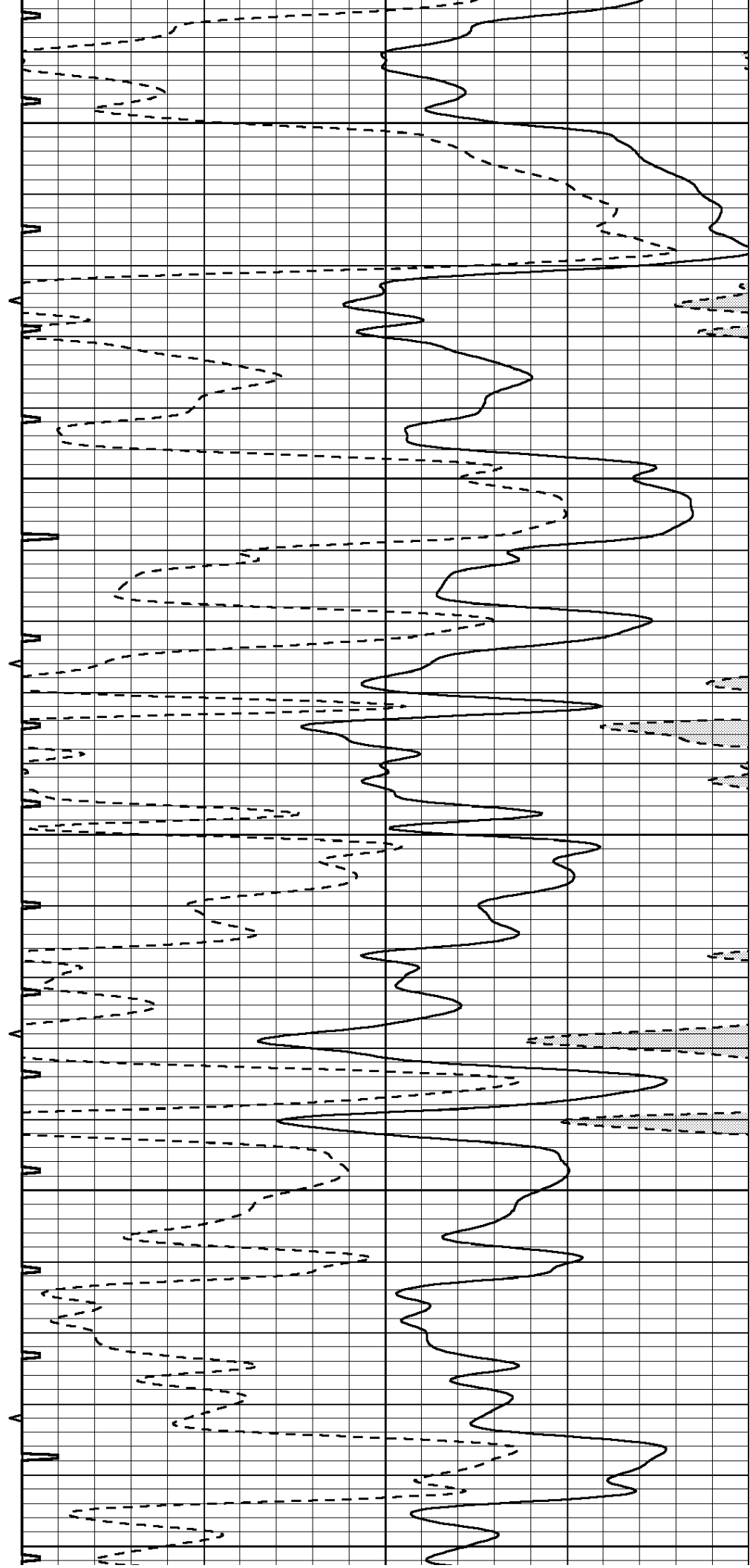
4200

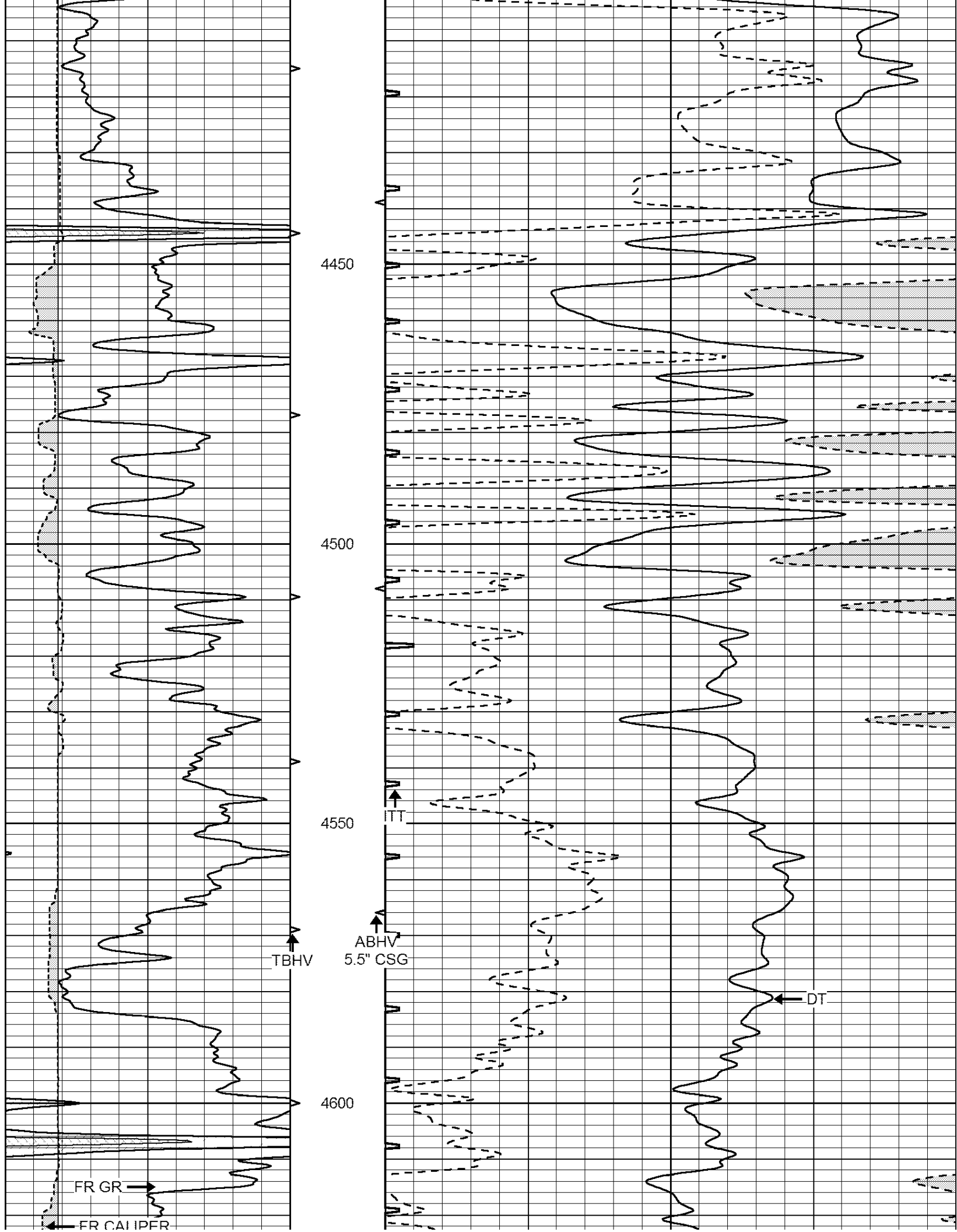
4250

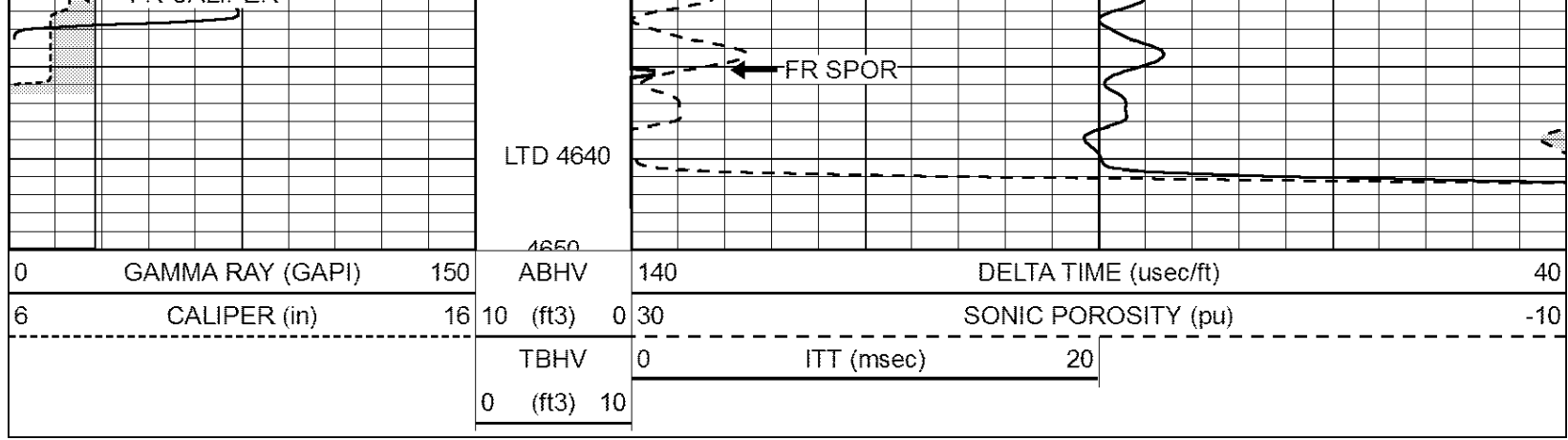
4300

4350

4400



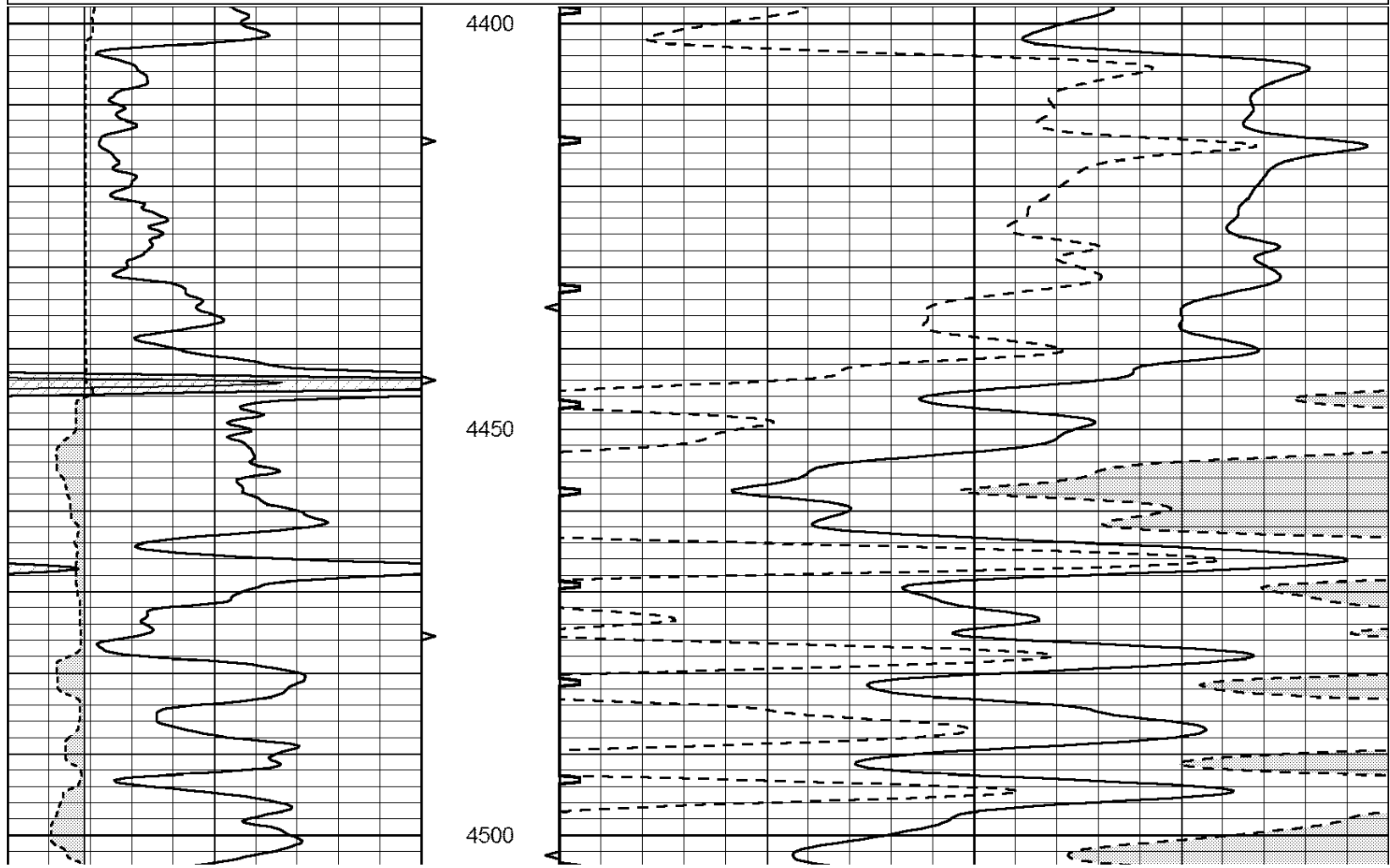


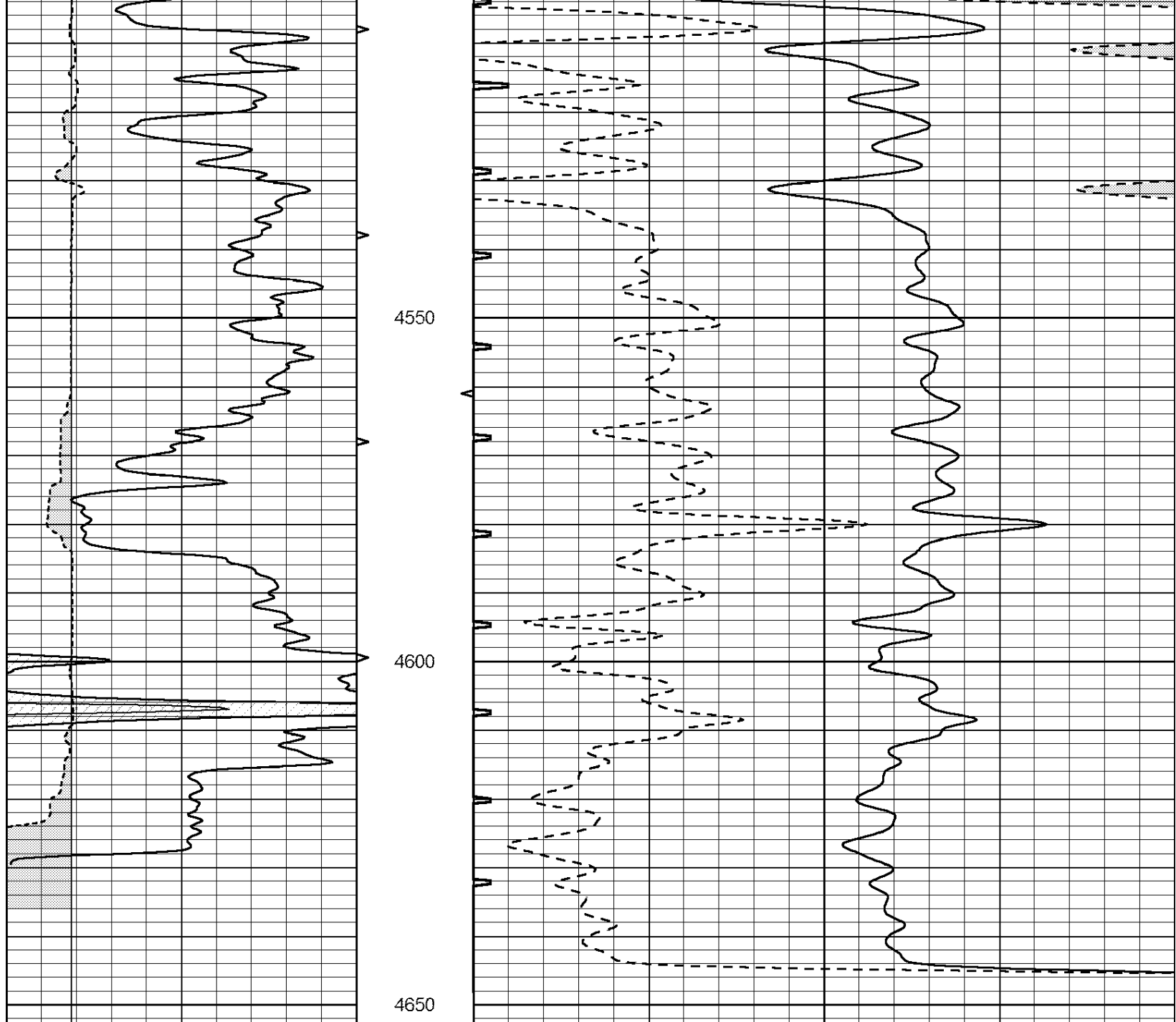


REPEAT SECTION

Database File: 26431ddn.db
 Dataset Pathname: pass6.3
 Presentation Format: _slt
 Dataset Creation: Thu Jan 15 09:33:36 2015 by Calc Open-Cased 090629
 Charted by: Depth in Feet scaled 1:240

0	GAMMA RAY (GAPI)	150	ABHV	140	DELTA TIME (usec/ft)	40
6	CALIPER (in)	16	10 (ft3)	0 30	SONIC POROSITY (pu)	-10
			TBHV	0	ITT (msec)	20
			0 (ft3)	10		





0	GAMMA RAY (GAPI)	150	ABHV	140	DELTA TIME (usec/ft)	40
6	CALIPER (in)	16	10 (ft3) 0	30	SONIC POROSITY (pu)	-10
			TBHV	0	ITT (msec)	20
			0 (ft3) 10			