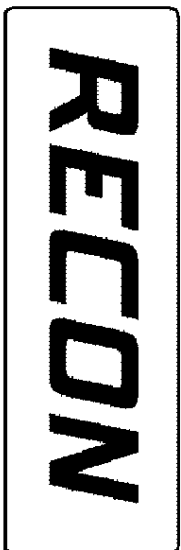


Company **RED OAK ENERGY, INC.**  
 Well **BERNING #1-16**  
 Field **WILDCAT**  
 County **WICHITA**  
 State **KANSAS**



**BOREHOLE  
 VOLUME  
 X-Y CALIPER**

SEC	TWP	RGE	OTHER SERVICES:	
16	20S	38W	DIL	LDT
Location: 1997' Fsl & 1822' FEL			CNL	MEL
SURE: SAME			ELEVATIONS	
AP#: 15-203-20288-00-00			K.B.	3434.6
Permanent Datum			G.L.	3418
Log Measured From Kelly Bushing			D.F.	3432.6
Drilling Measured From Kelly Bushing			Elev 3428	

Date	22-AUG-2014	
Run No.	ONE	
TD Driller	5050	ft
TD RECON	5055	ft
Bot Logged Interval	5054	ft
Top Logged Interval	2600	ft
Casing Depth Driller	8 5/8	in. @ 367
Casing Depth RECON	8 5/8	in. @ 351
Bit Size	7 7/8	in.
Drilling Fluid Type	Chemical	
Density	9.2 lb/gal	54 sec/qt
Fluid Loss	8.8 ml/30min	9.0 strtp
Source Of Sample	Flowline	
RM @ Measured Temp	0.457	Ohmm @ 75
RMF @ Measured Temp	0.343	Ohmm @ 75
RMC @ Measured Temp	0.571	Ohmm @ 75
RM @ MRT	0.279	Ohmm @ 127
Max Recorded Temp	127	DegF
Time Drilling Stopped	22-NOV-2014	17:30
Time Circulation Stopped	22-NOV-2014	19:15
Time Logger On Bottom	22-NOV-2014	23:35
Unit Num	S409	OKLAHOMA CITY, OK
Recorded By	H. GARCIA	
Witnessed By	MR. P. DEENIHAN	

All interpretations are based on inferences from electrical or other readings, and therefore, RECON cannot and will not guarantee the accuracy of any interpretations of log data. RECON shall not be liable for any loss, costs, damages, or expenses incurred or sustained by anyone resulting from

interpretations made by any of our officers, agents or employees, except in the case of provable Gross Negligence or willfull damage. Interpretations are also subject to the terms and conditions of our Price Schedule and General Service Agreement.

RIG INFORMATION	
Drill Contr/Rig#	WILDCAT DRLG. #1

GENERAL REMARKS SECTION	
<p>FIRST RUN IN THE HOLE          CNL AND LDT LOGGED IN A LIMESTONE MATRIX          TOP MARK - 352, BOTTOM MARK - 4956.8          CNL/LDT LOGGED MATRIX: 2.71 g/cc.</p> <p>CHLORIDES: 5300 ppm          LCM: 2 lbs/bbl</p> <p>THANK YOU FOR USING RECON PETROTECHNOLOGIES LTD.</p>	<p>AHV CALCULATED ON 5.5" PROD. CASING</p> <p>CREW: M. CALLENTINE, B. THOMAS</p>

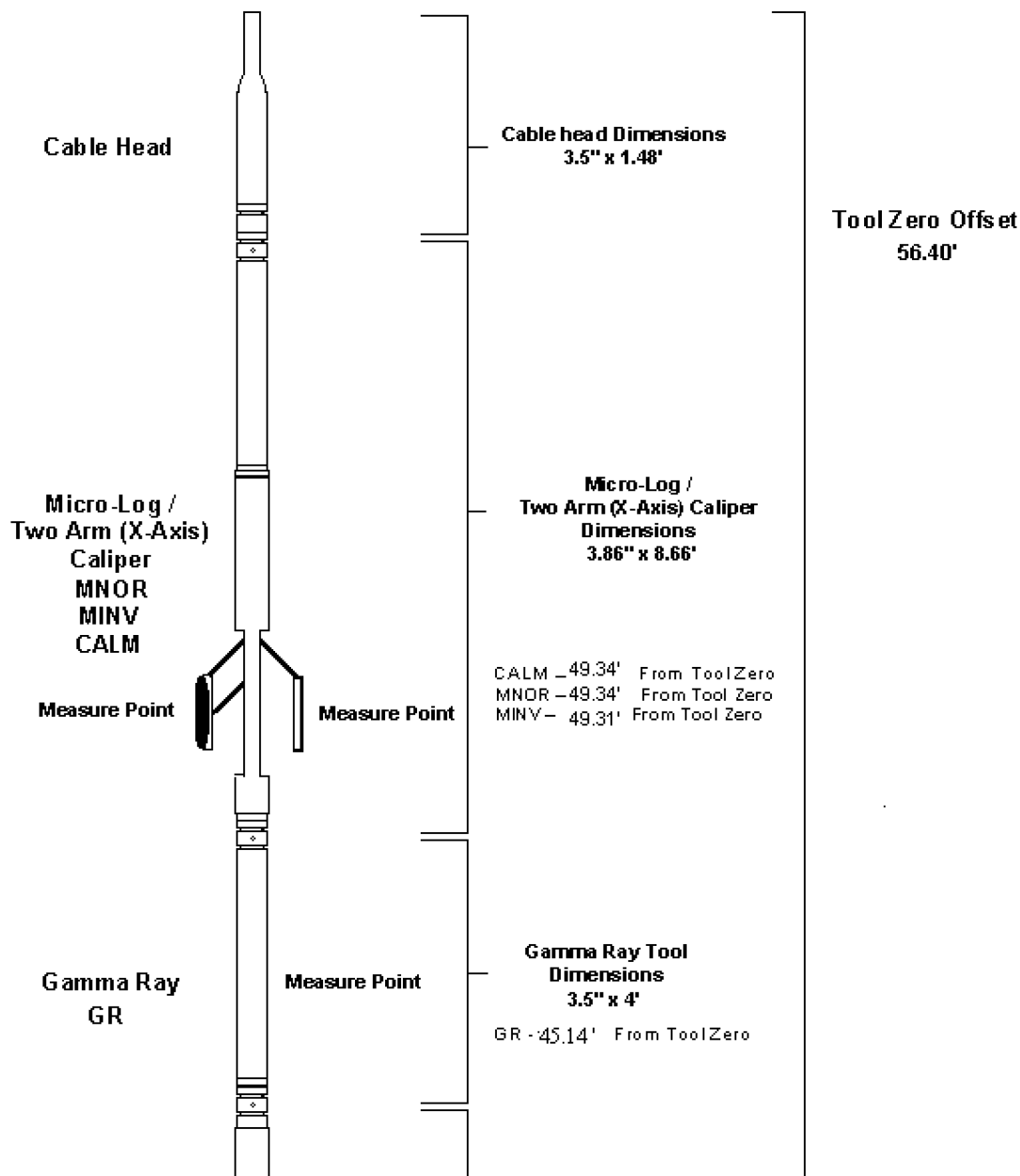
# CEMENT VOLUME CALCULATIONS SUMMARY

<b>Tool Type</b>	<b>LDT-CNT</b>	<b>Caliper Type</b>		
<b>Tool Serial #</b>	<b>RN2004 / RL4101</b>	<b>X-Y CALIPERS</b>		
	<b>Borehole Total</b>	<b>Annular Volume with Casing</b>	<b>From Depth (MKb)</b>	<b>To Depth (MKb)</b>
<b>VOLUMES</b>	<b>1908.594 Cubic Feet</b>	<b>1128.778 Cubic Feet</b>	<b>SCG 351</b>	<b>TD 5055</b>

## CASING INFORMATION

	SIZE (in)	GRADE	WEIGHT (lbs/ft)	ID (in)	TOP DEPTH	BOT DEPTH
<b>SURFACE CASING</b>	<b>8 5/8</b>	<b>J-55</b>	<b>24</b>	<b>8.097</b>	<b>Surface</b>	<b>351</b>
<b>INTERMEDIATE CASING</b>	<b>N/A</b>	<b>N/A</b>	<b>N/A</b>	<b>N/A</b>	<b>Surface</b>	<b>N/A</b>
<b>PRODUCION CASING</b>	<b>5 1/2</b>	<b>J-55</b>	<b>15.5</b>	<b>4.950</b>	<b>Surface</b>	<b>TD</b>

**DUAL INDUCTION - SP / GAMMA RAY /  
 COMPENSATED LITHO-DENSITY / X-CALIPER  
 COMPENSATED NEUTRON / Y-CALIPER  
 MICRO - LOG / M-CALIPER**



Compensated Neutron  
Y - Axis Caliper  
NP (SS,LS,DL)  
CALY

Compensated Neutron  
Y-Axis Caliper  
Dimensions  
3.98" x 10.25'

CALY - 37.14' From ToolZero  
CNL LS - 36.32' From ToolZero  
CNL SS - 35.73' From ToolZero

Measure Point

Digital Telemetry

Digital Telemetry Section  
Dimensions  
3.5" x 3.15'

Tool String  
Length Total  
57.89'

Compensated  
Litho-Density (Pe)  
X - Axis Caliper

Compensated Litho-Density  
X-Axis Caliper  
Dimensions  
3.98" x 9.35'

DP (SS,LS,DL)  
RHOB  
DRHO  
PE  
CALX  
Measure Point

CALX - 23.20' From ToolZero  
LDT w1 -  
LDT w2 -  
LDT w3 - 22.93' From ToolZero  
LDT w4 -  
LDT SS - 22.44' From ToolZero

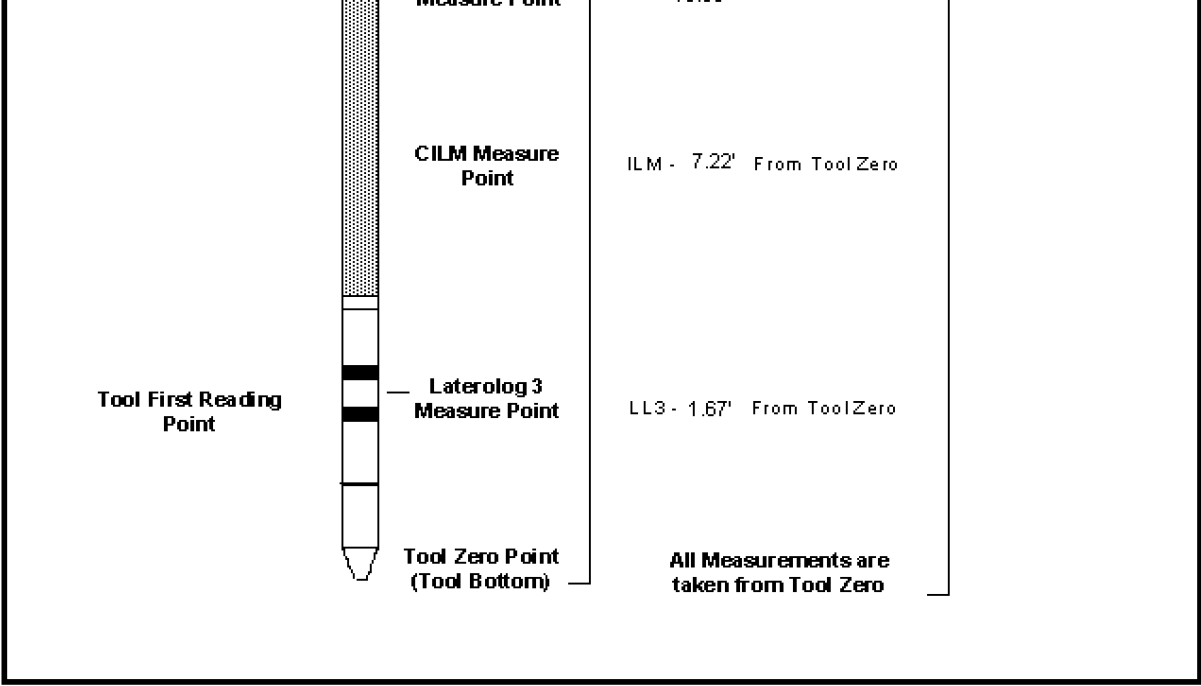
Dual Induction

SP  
ILD  
ILM  
LL3

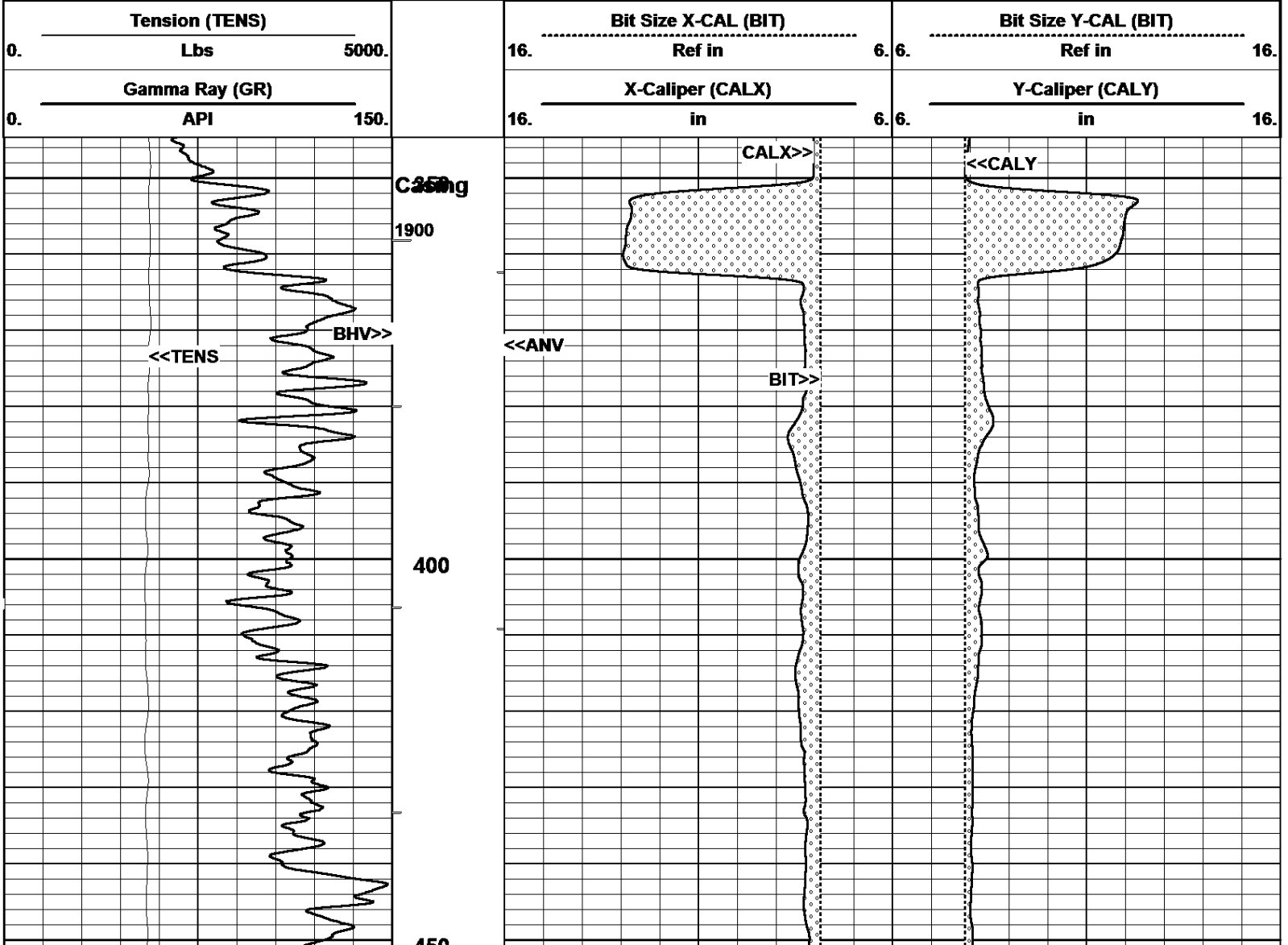
Dual Induction Tool  
Dimensions  
3.62" x 21'

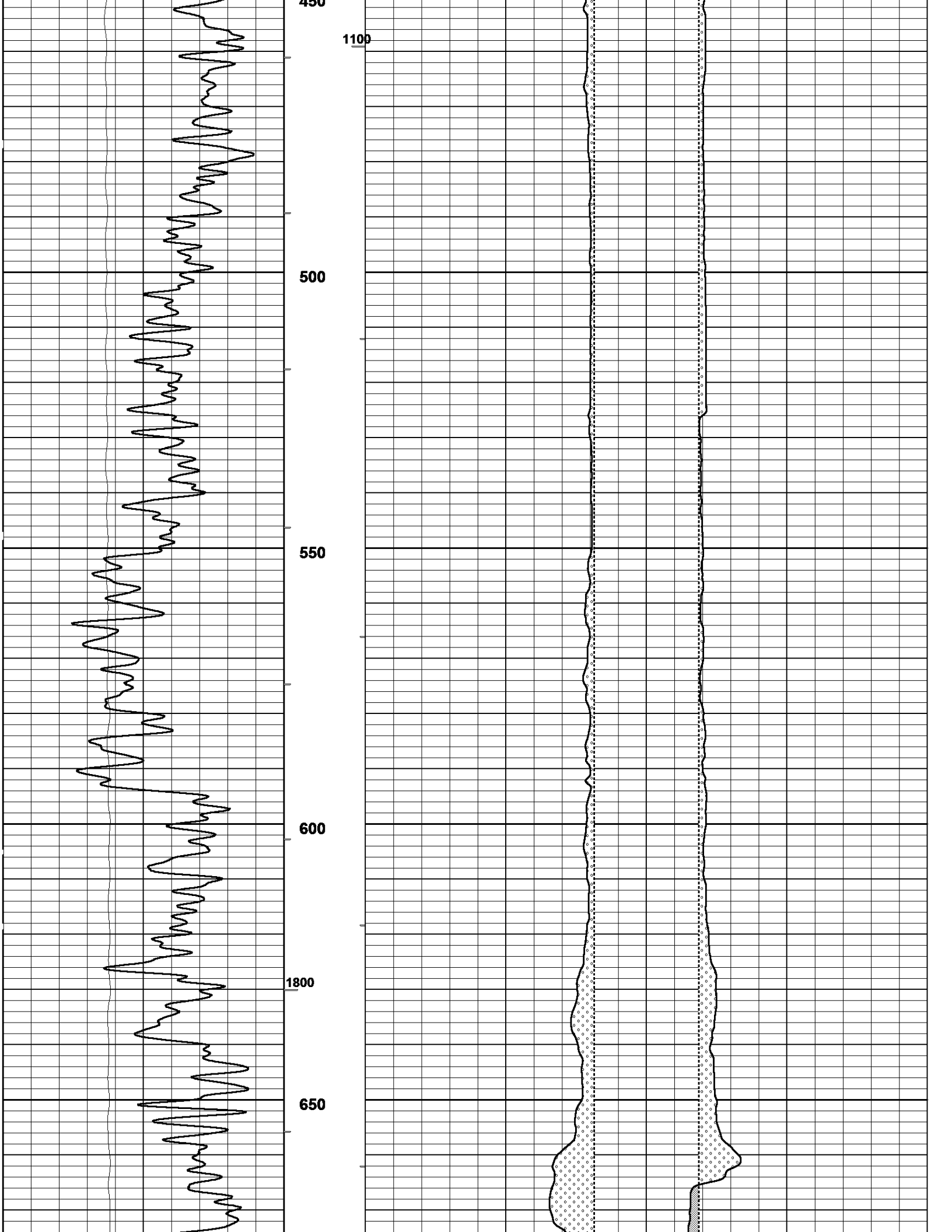
S.P. / CILD  
Measure Point

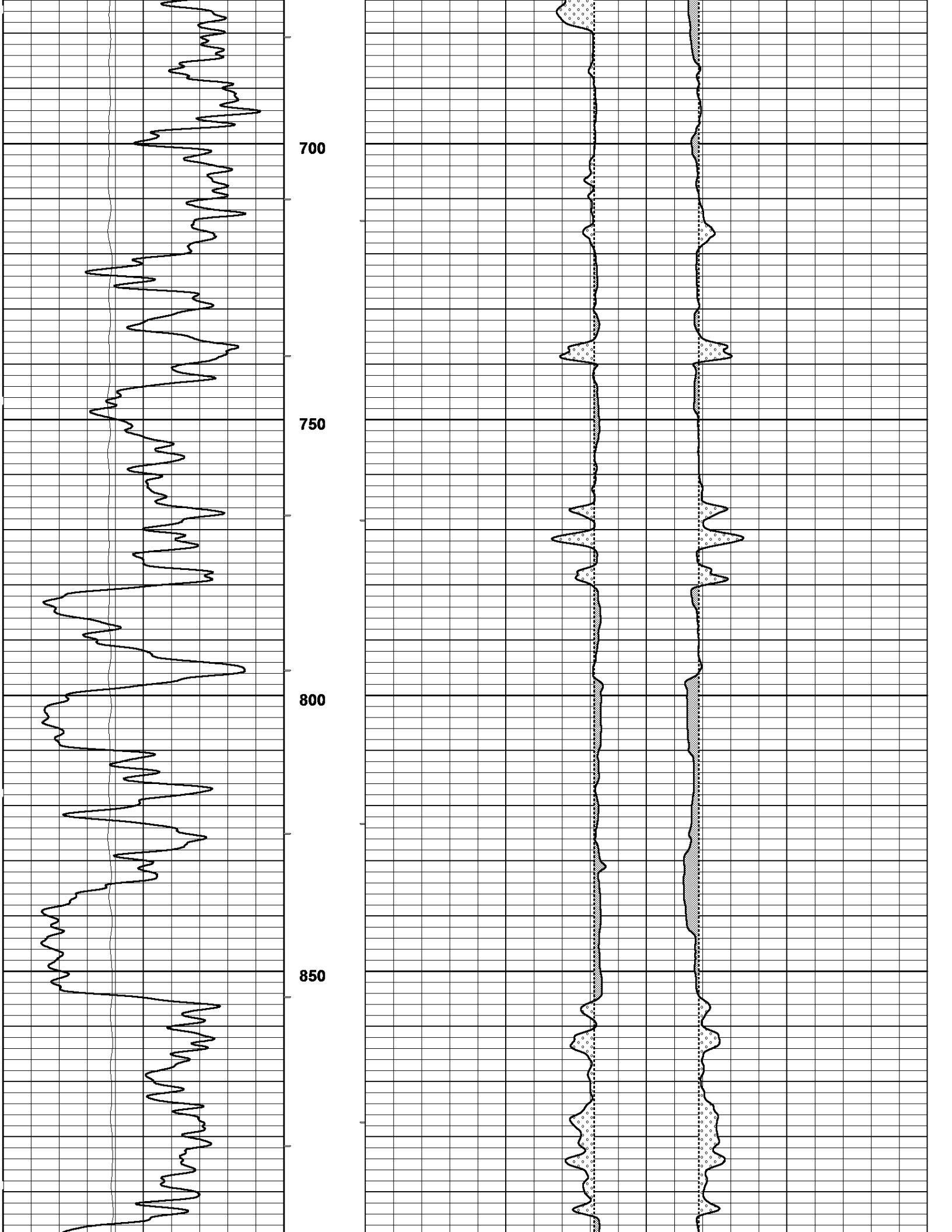
SP - 10.96' From ToolZero  
ILD - 10.96' From ToolZero

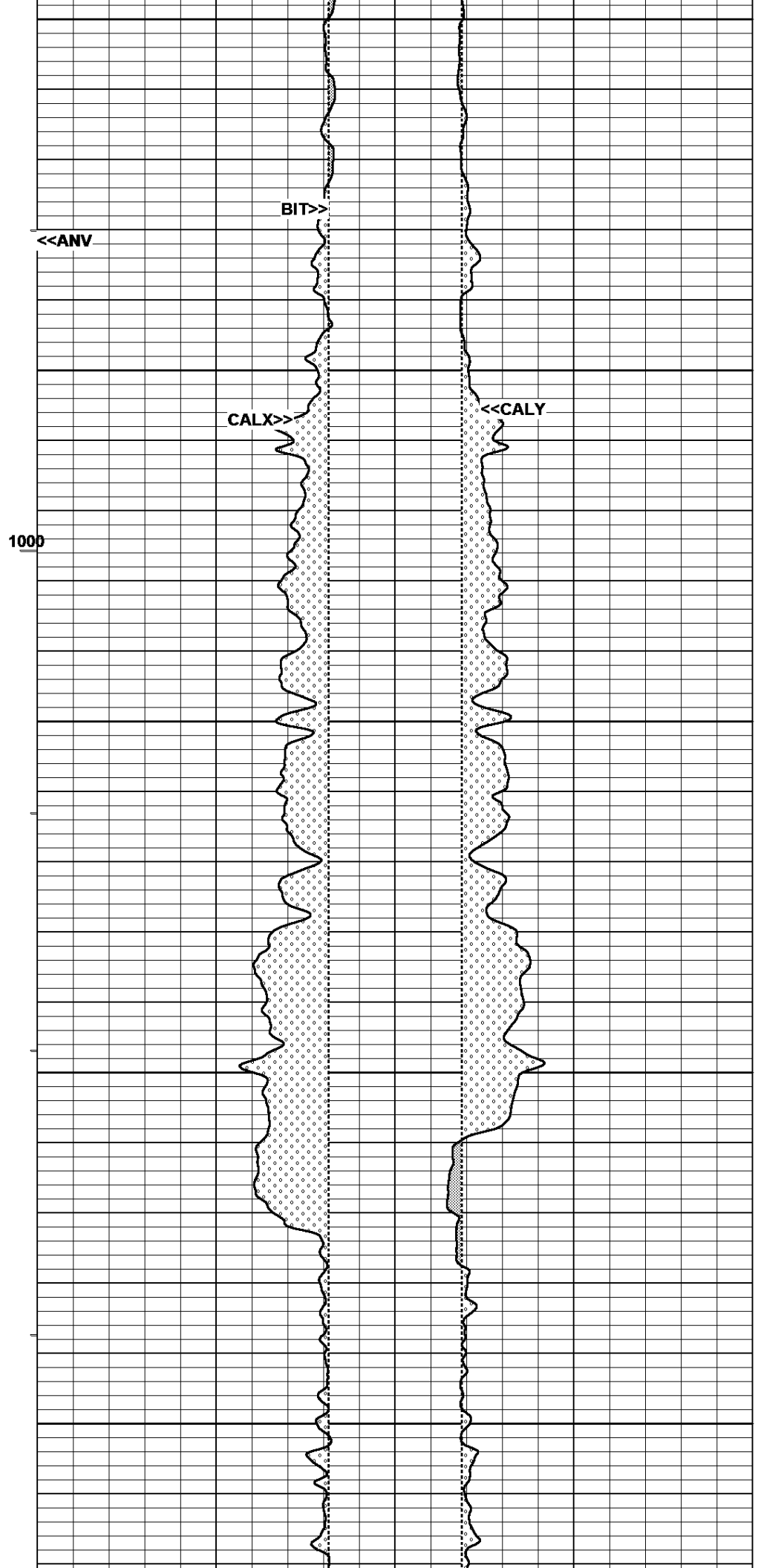
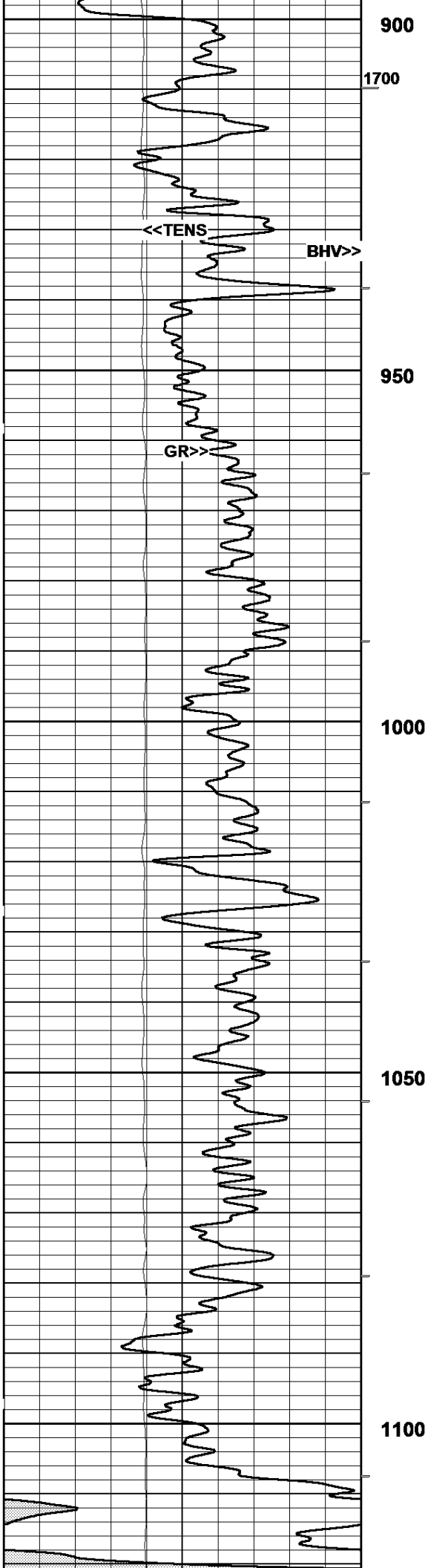


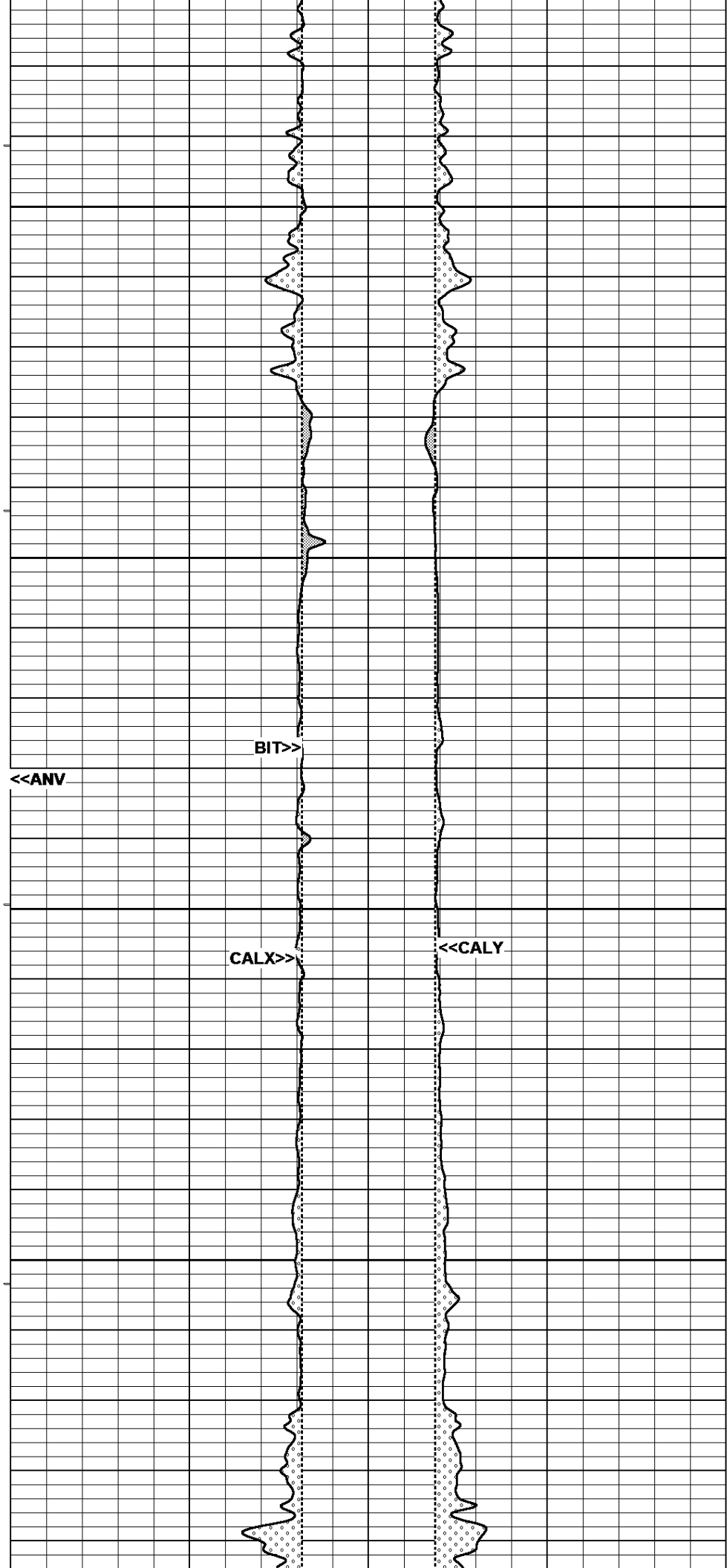
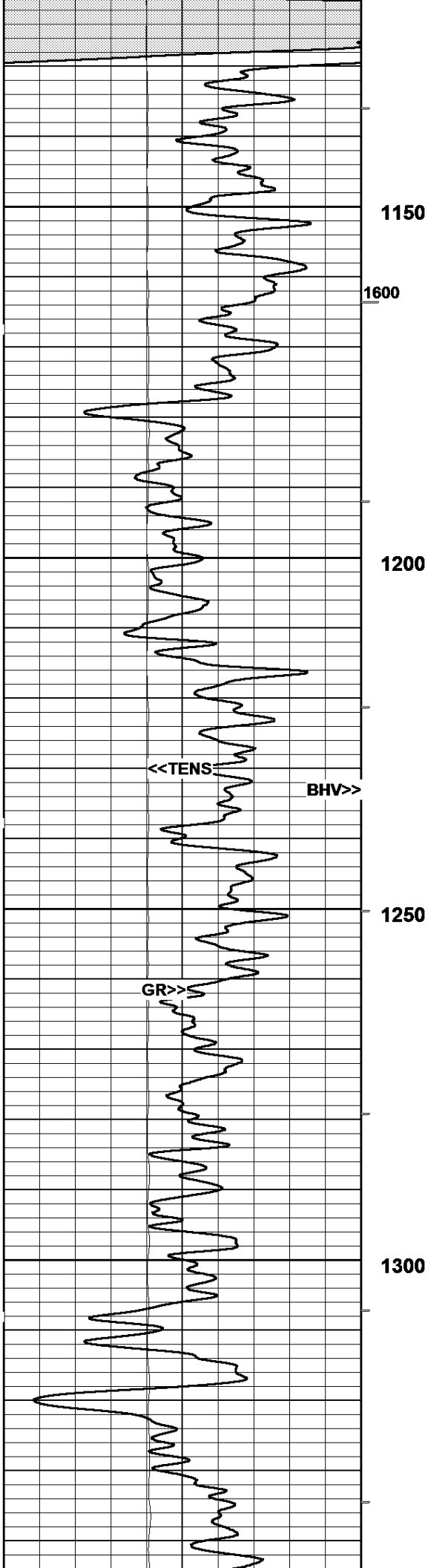
11/23/2014 **MAIN PASS (5"/100ft)** Log UP - (VER 11.19)  
 13:57:00 => End Time End Depth=> 344.90 Feet

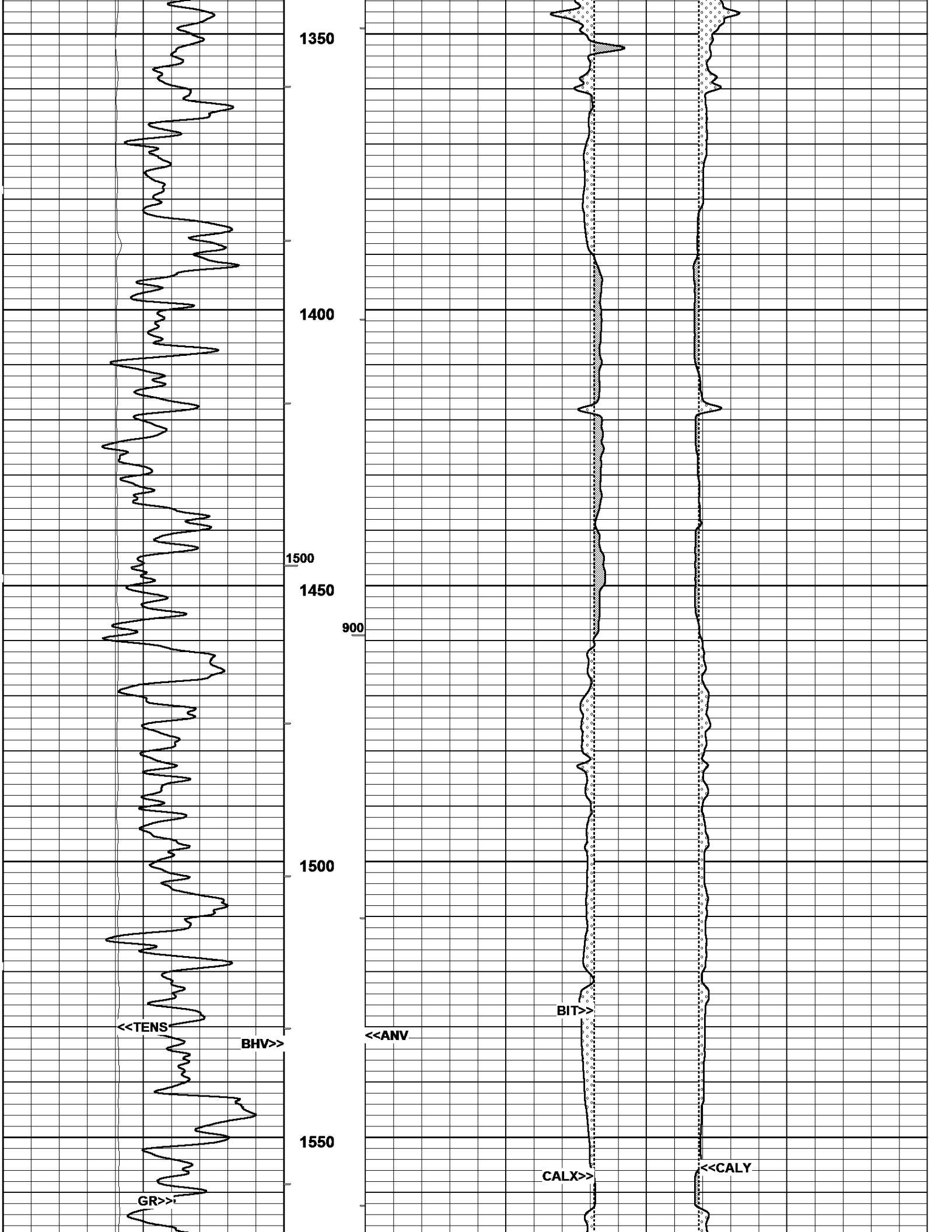


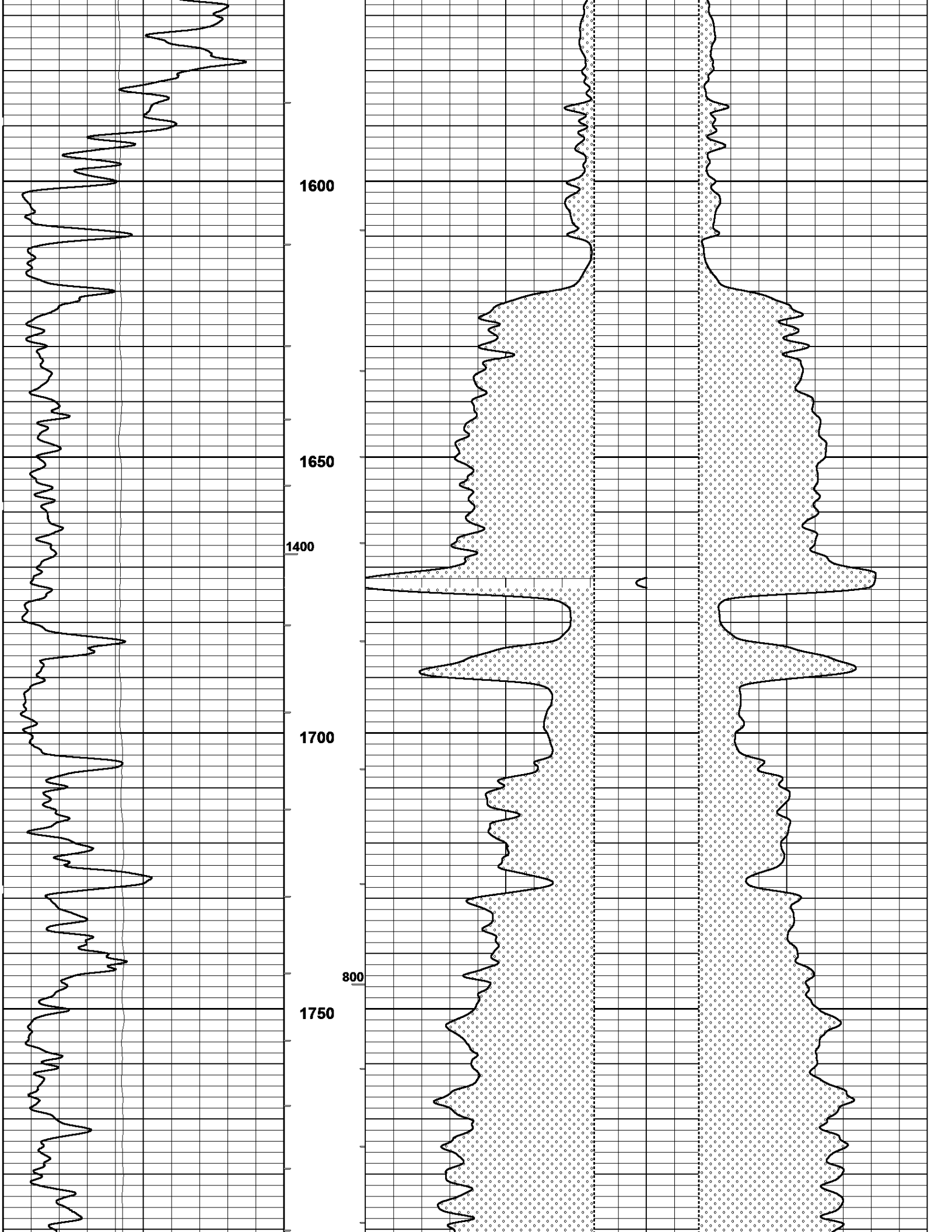


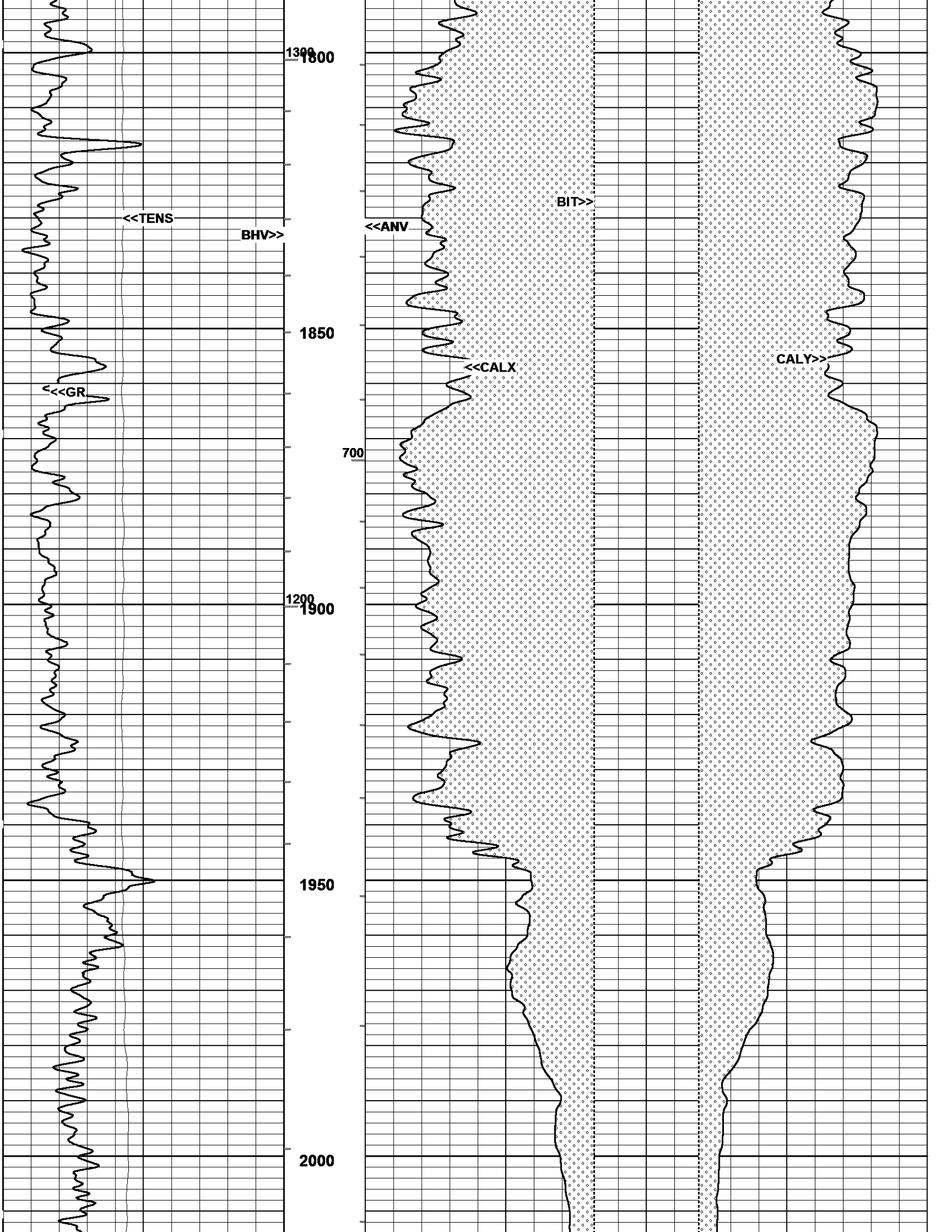


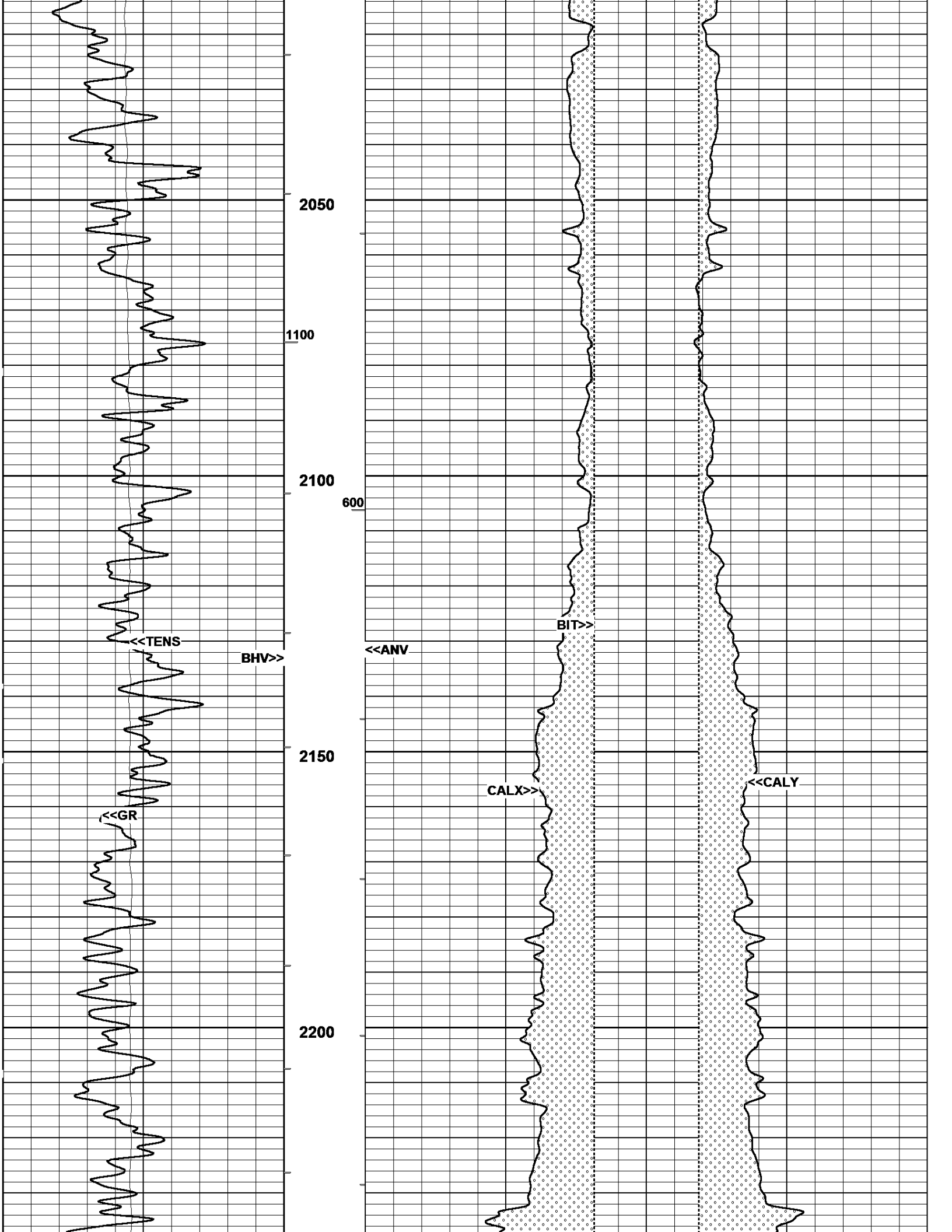


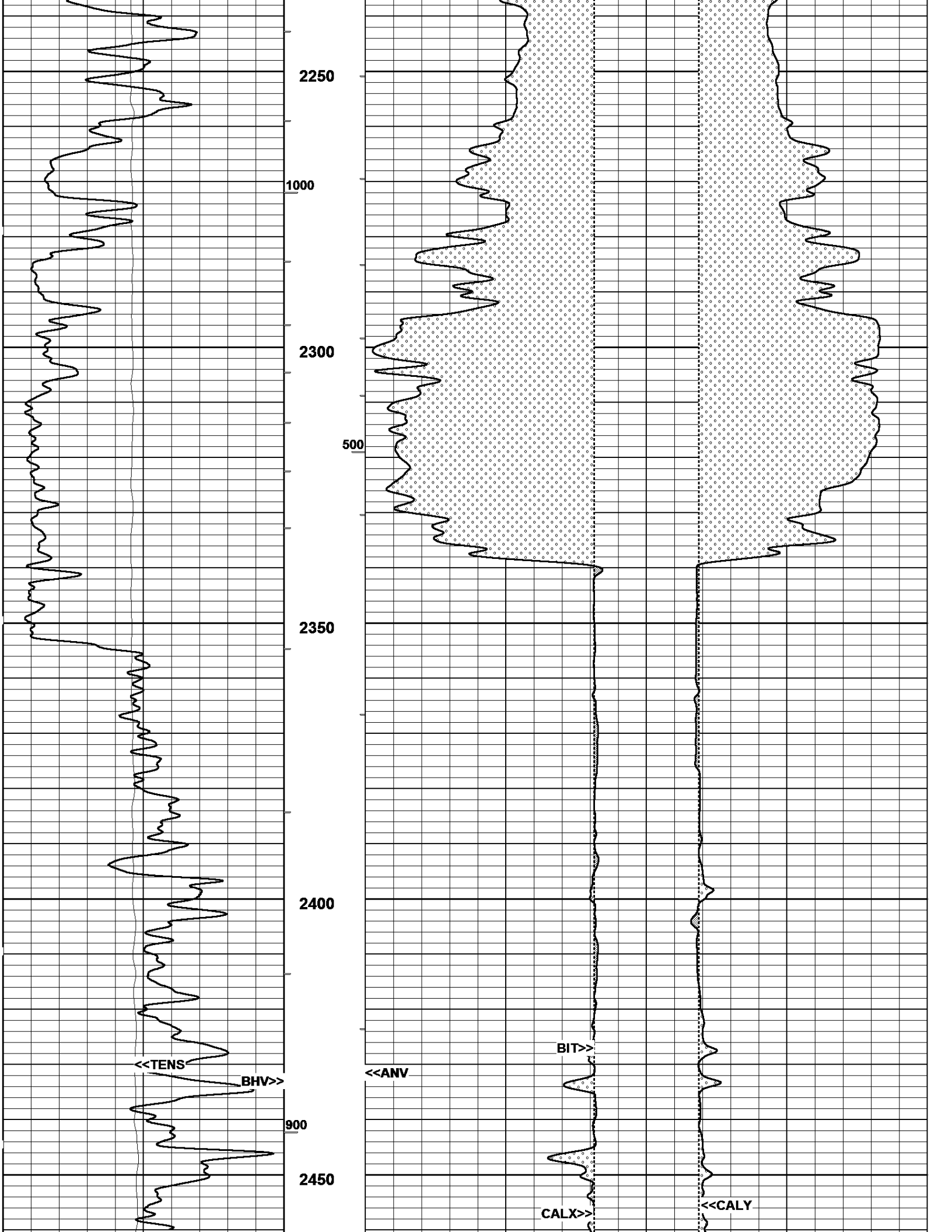




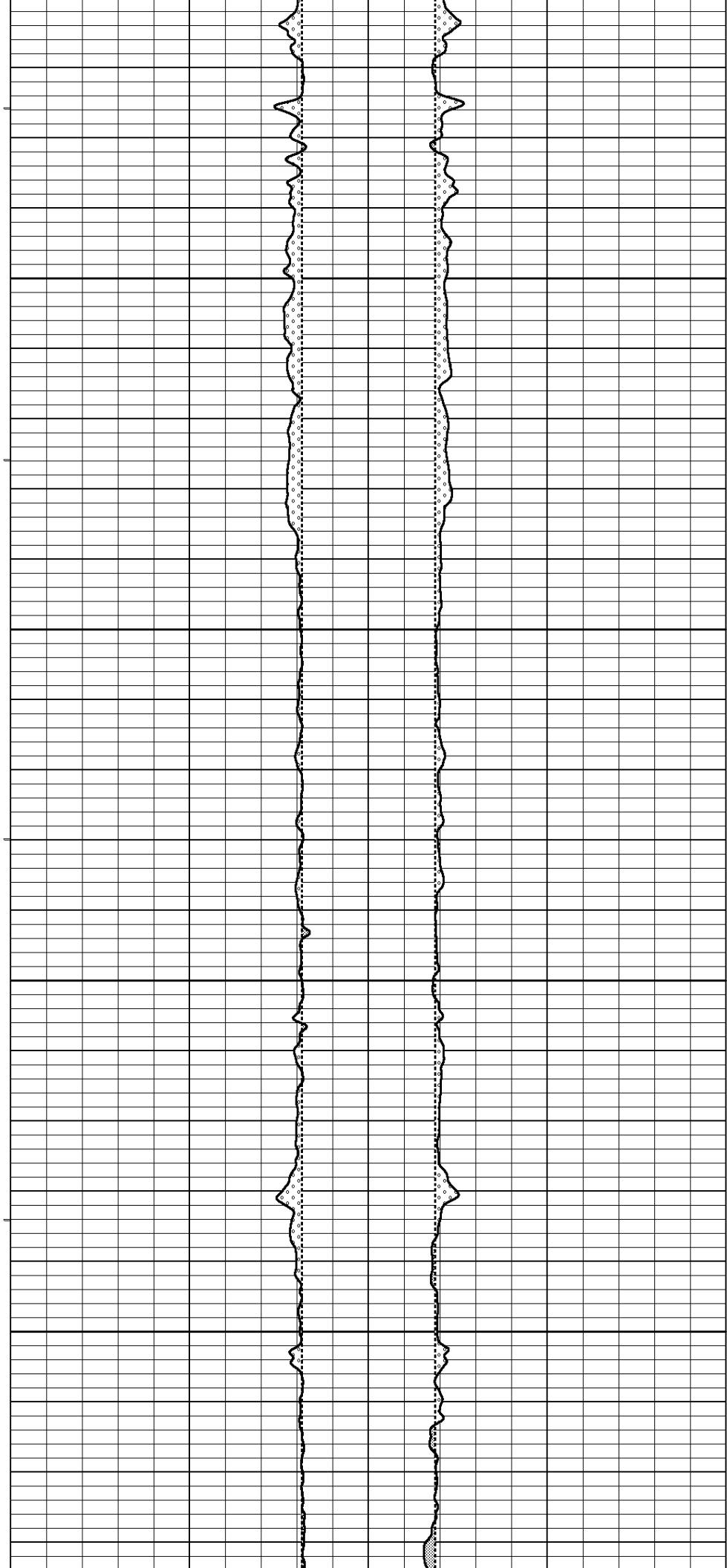
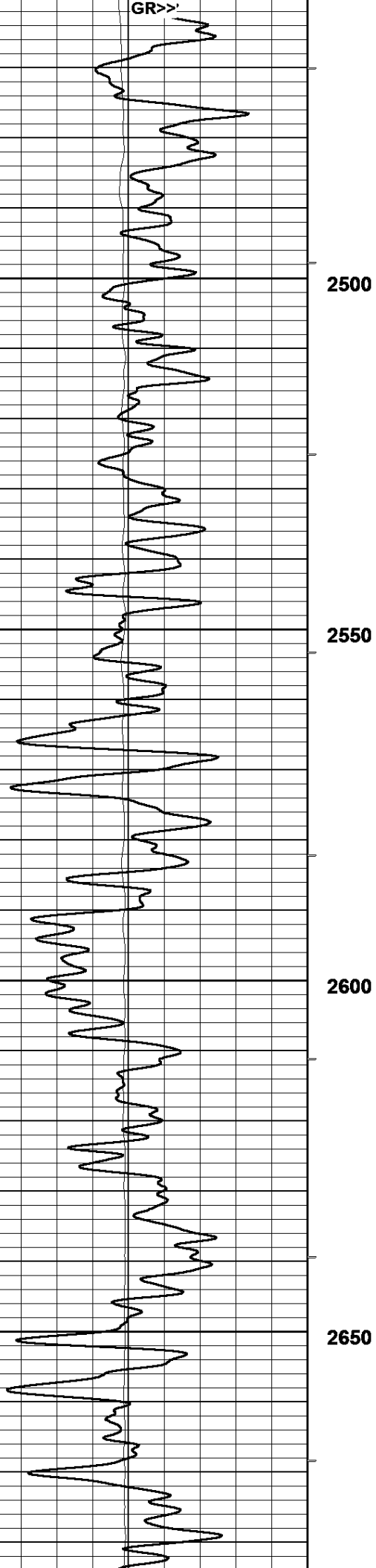


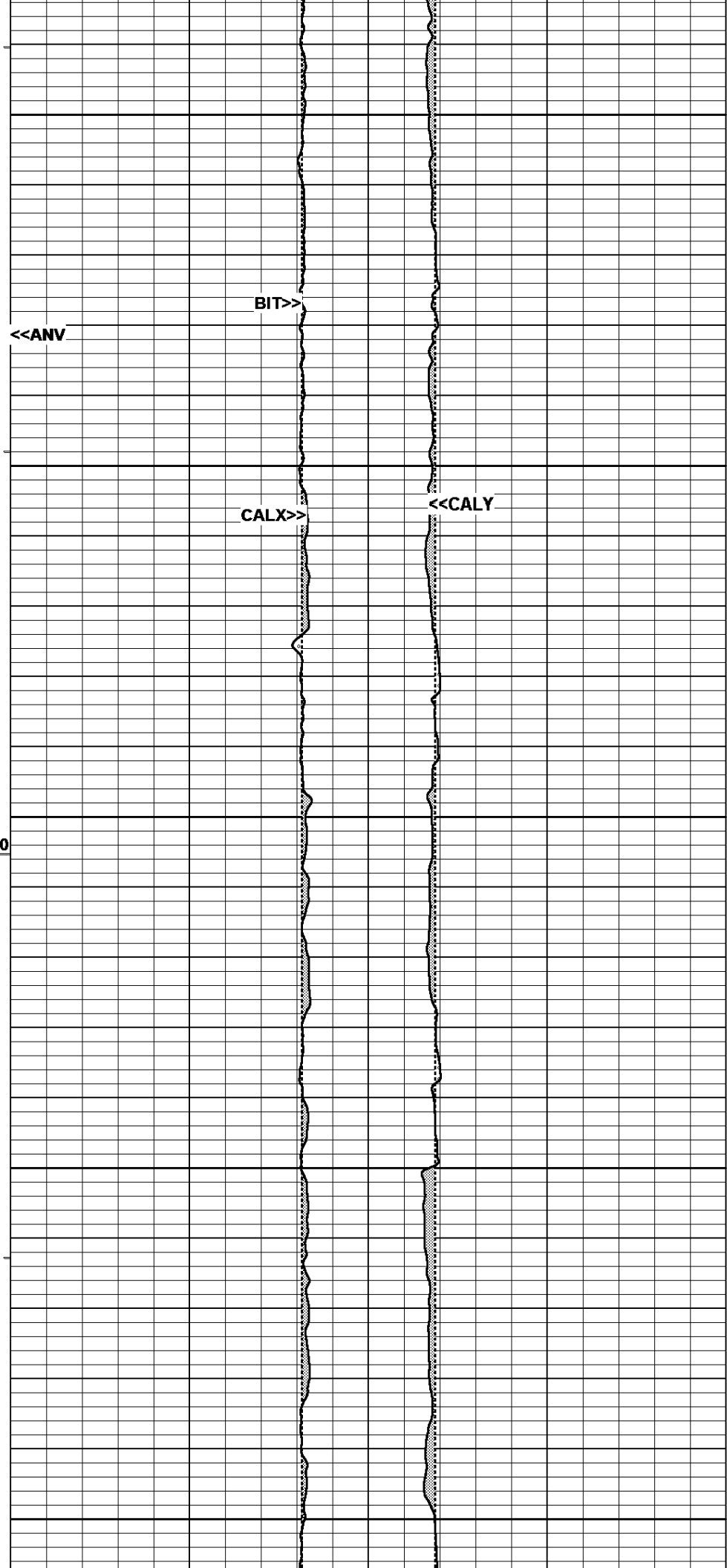
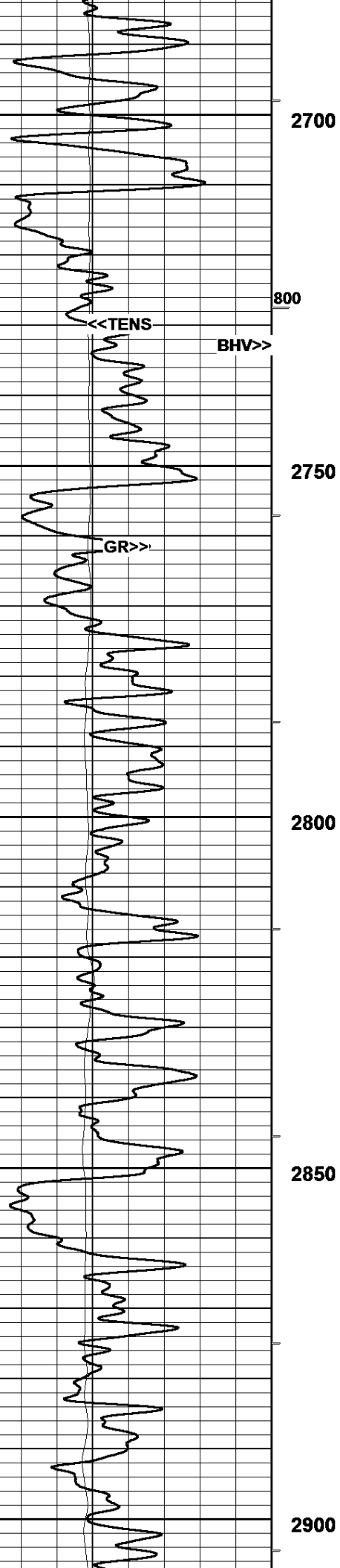


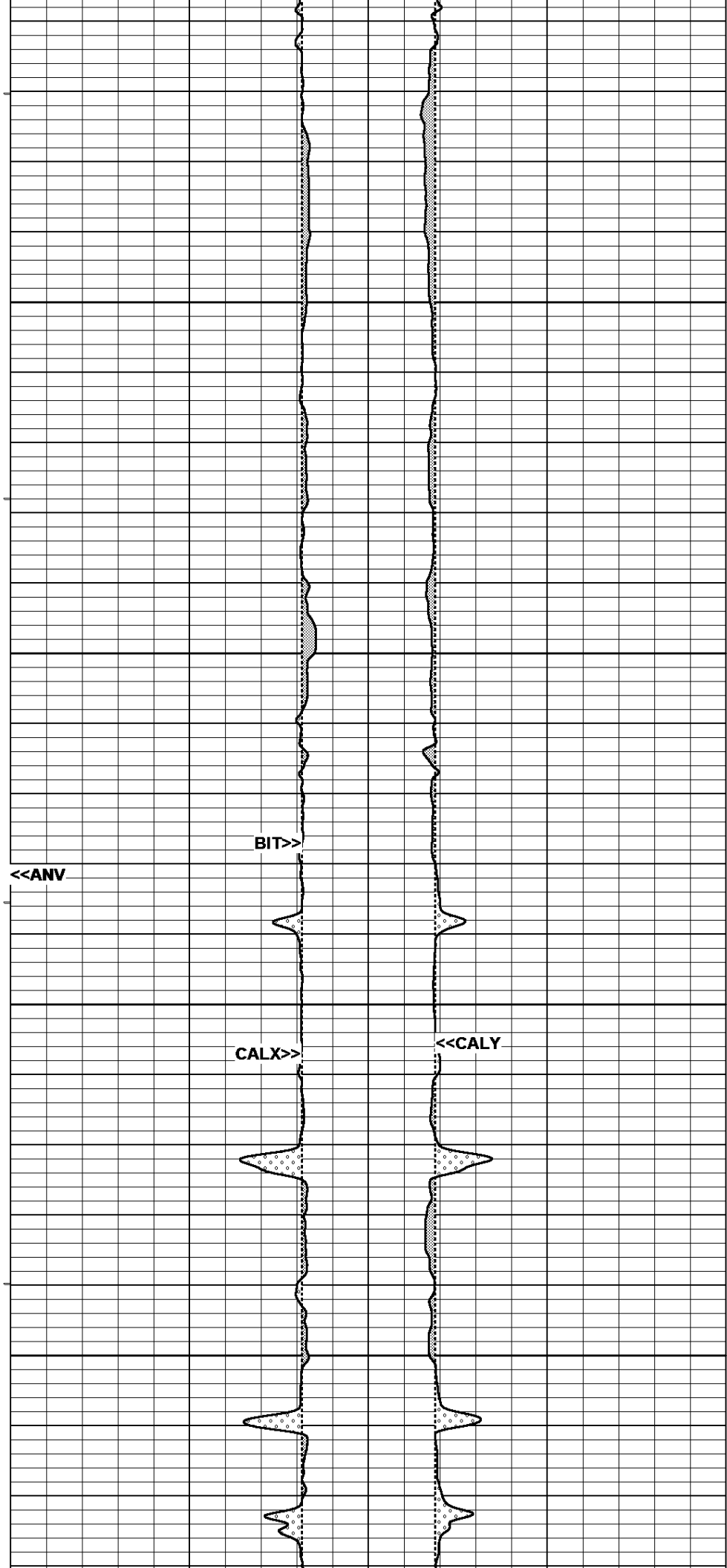
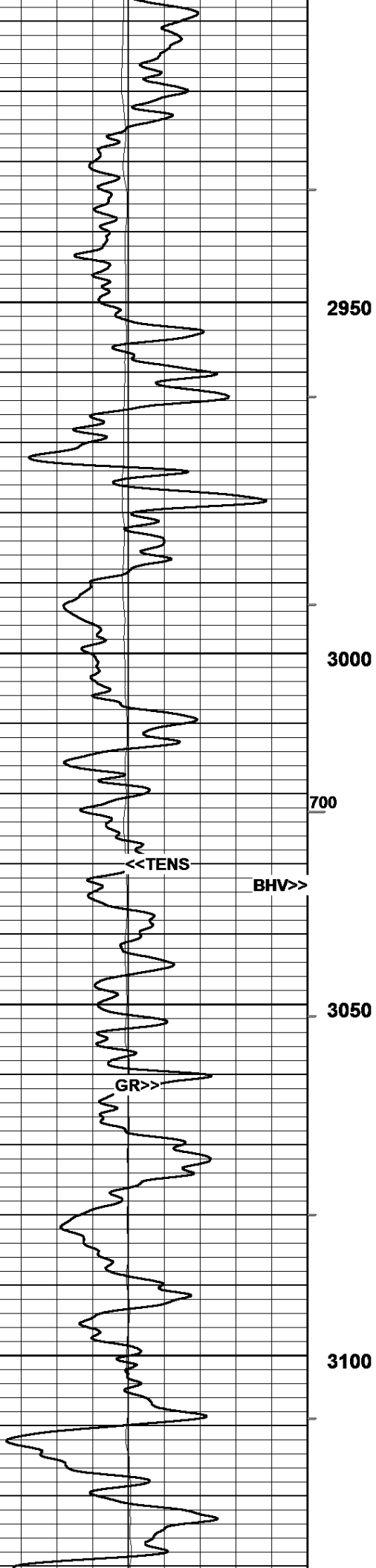


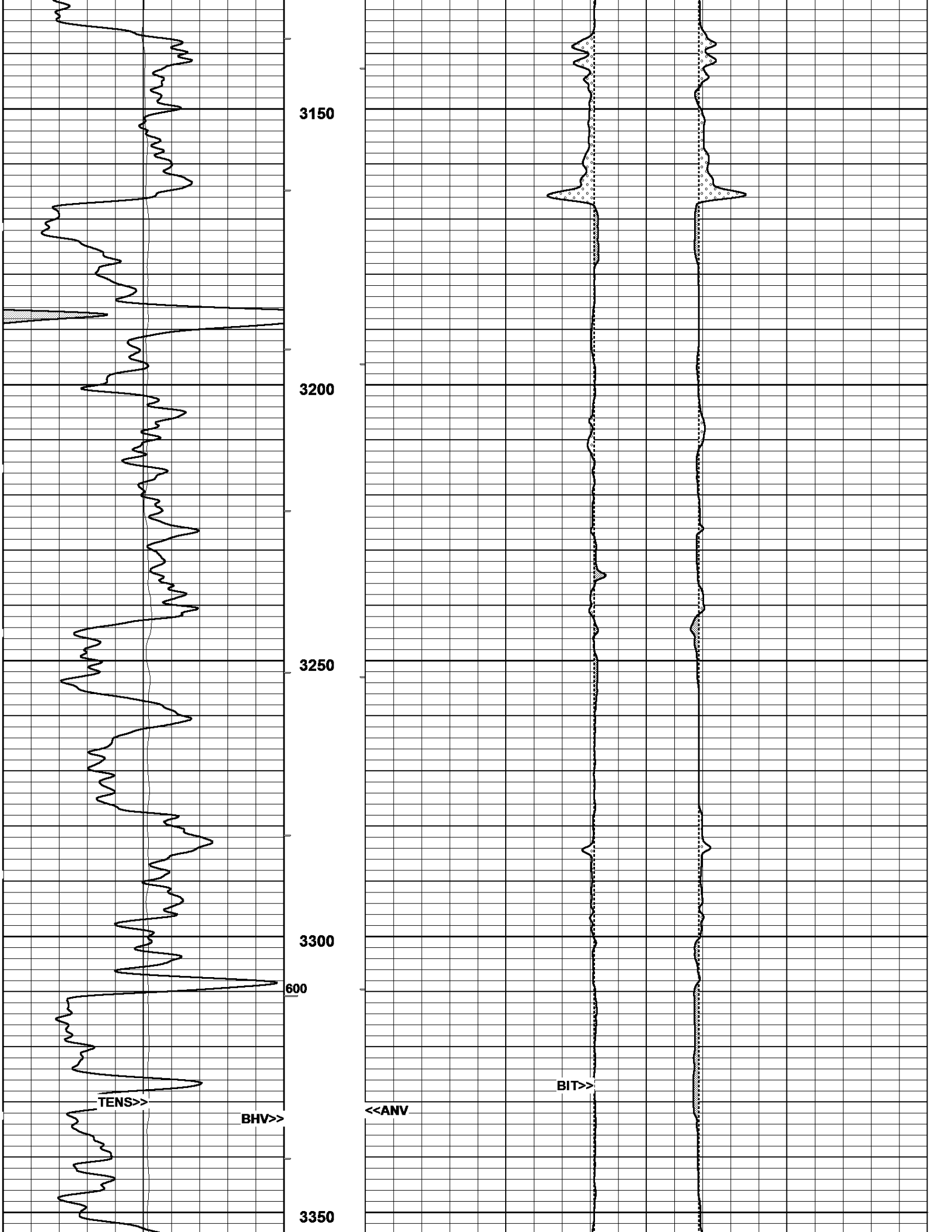


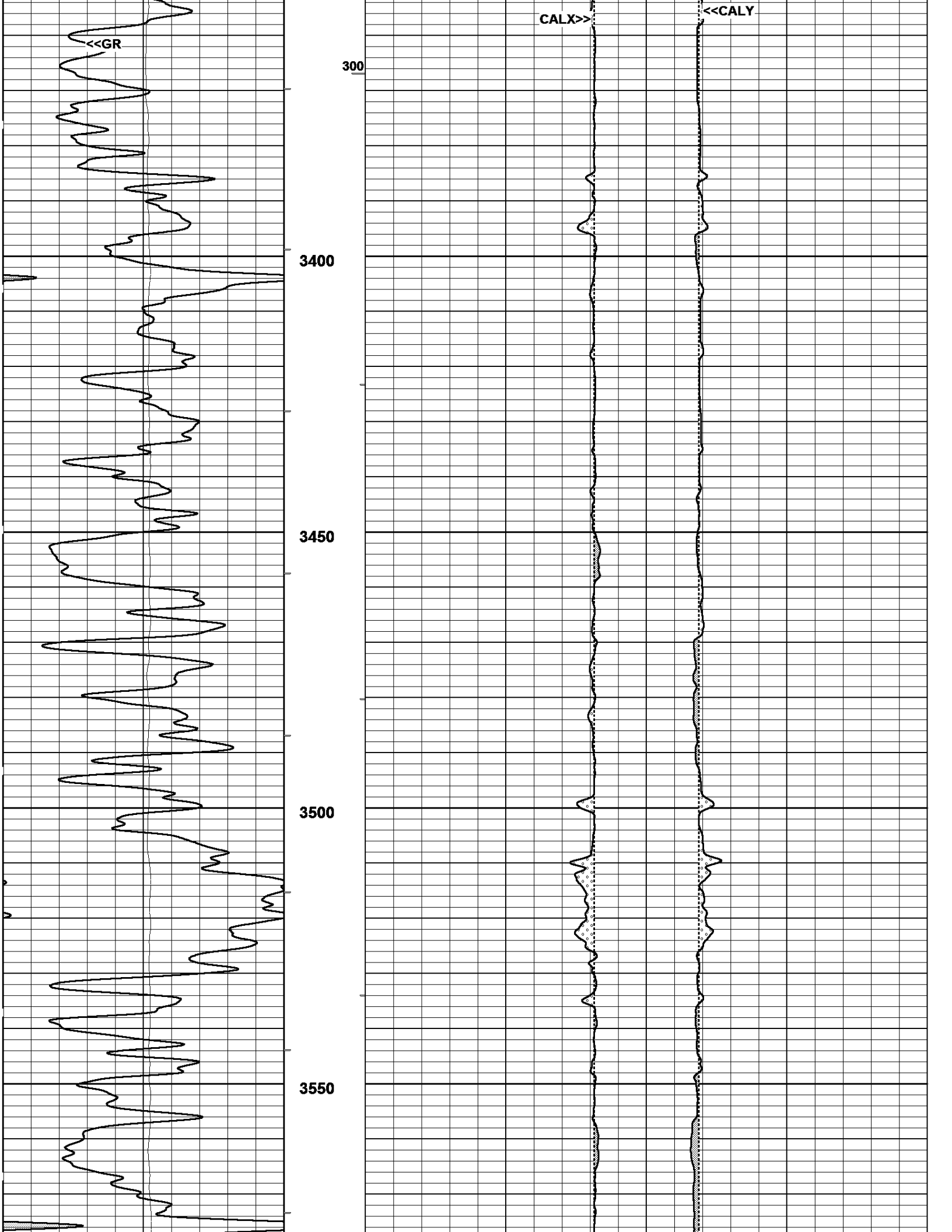
GR>>

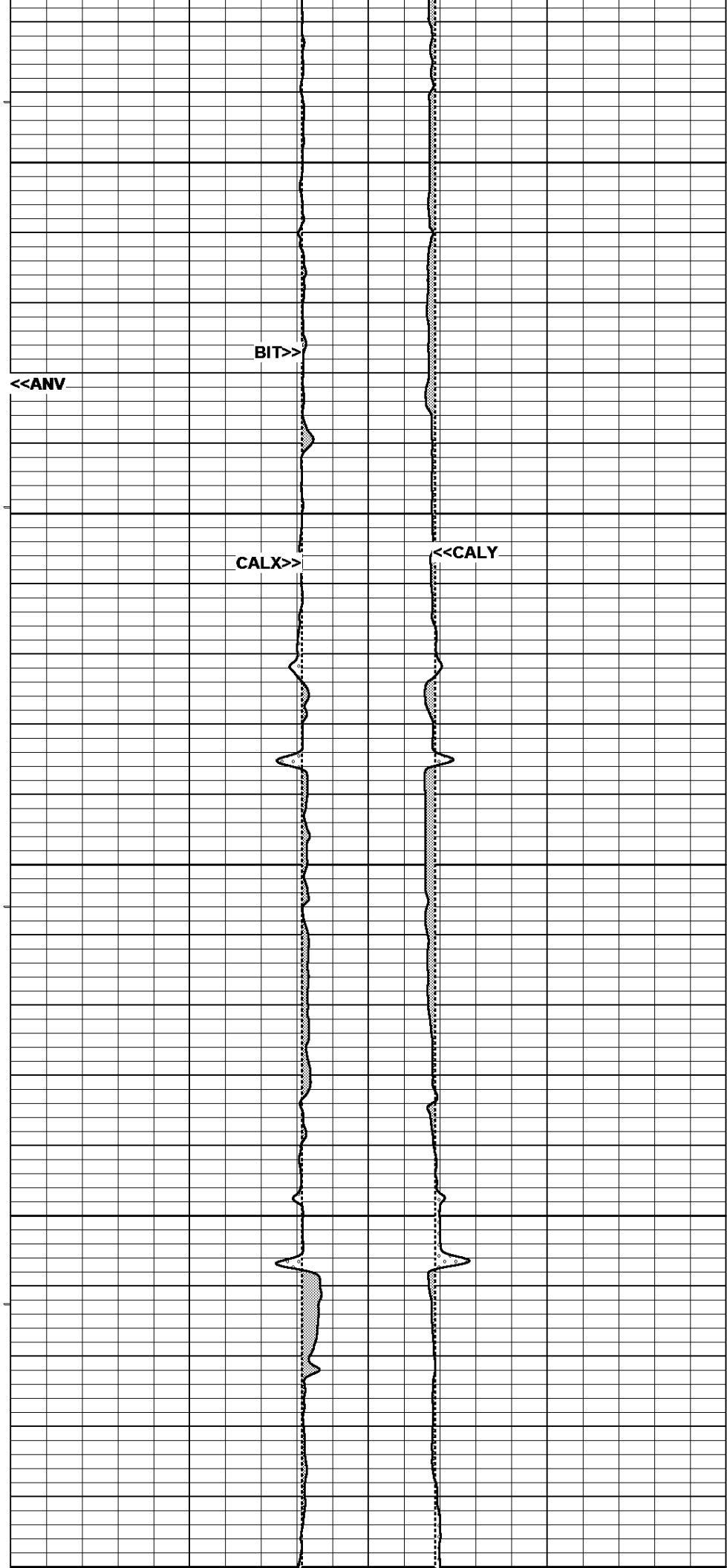
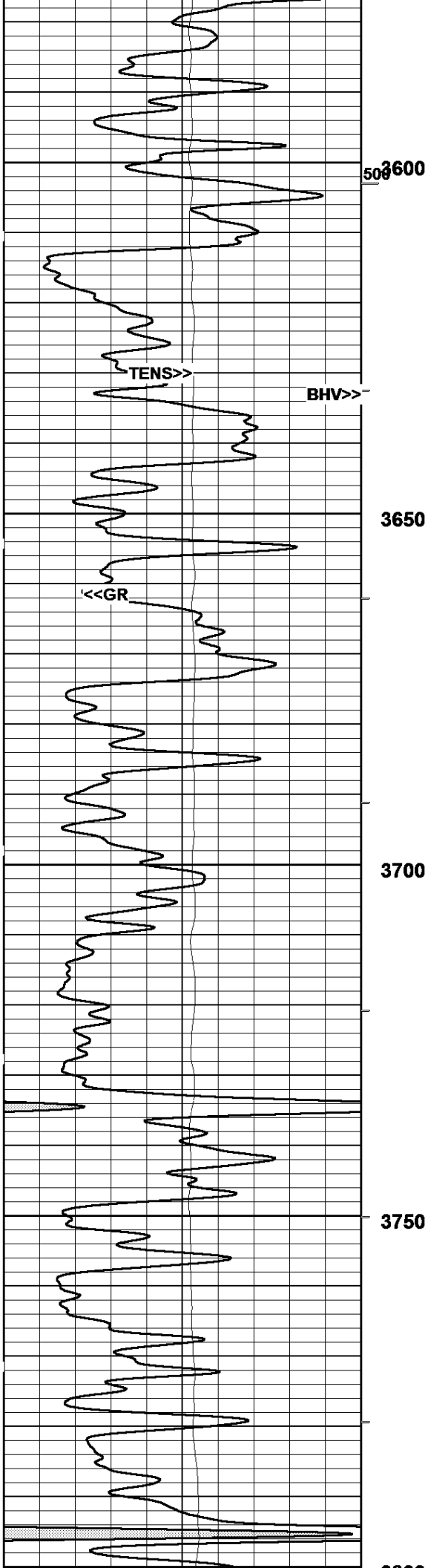


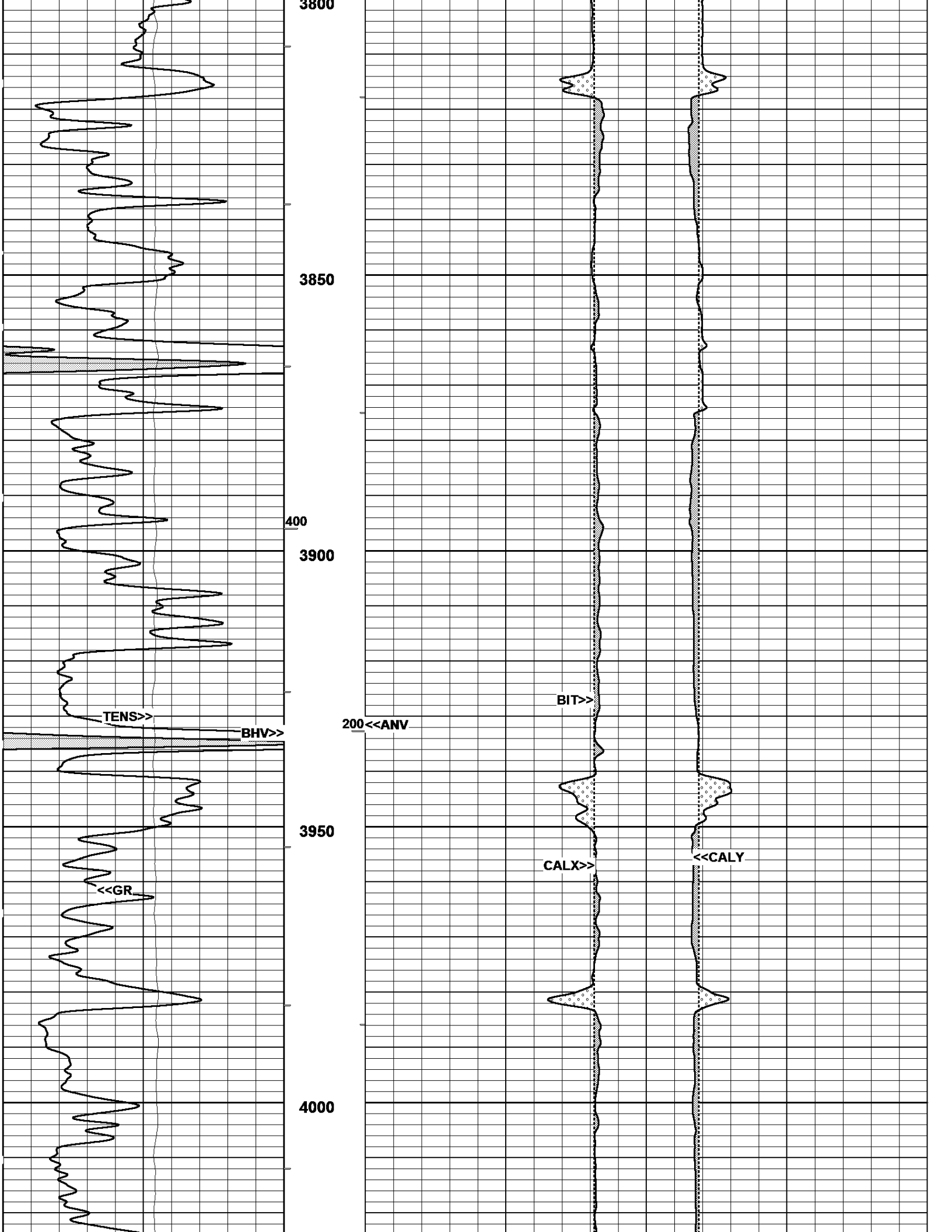


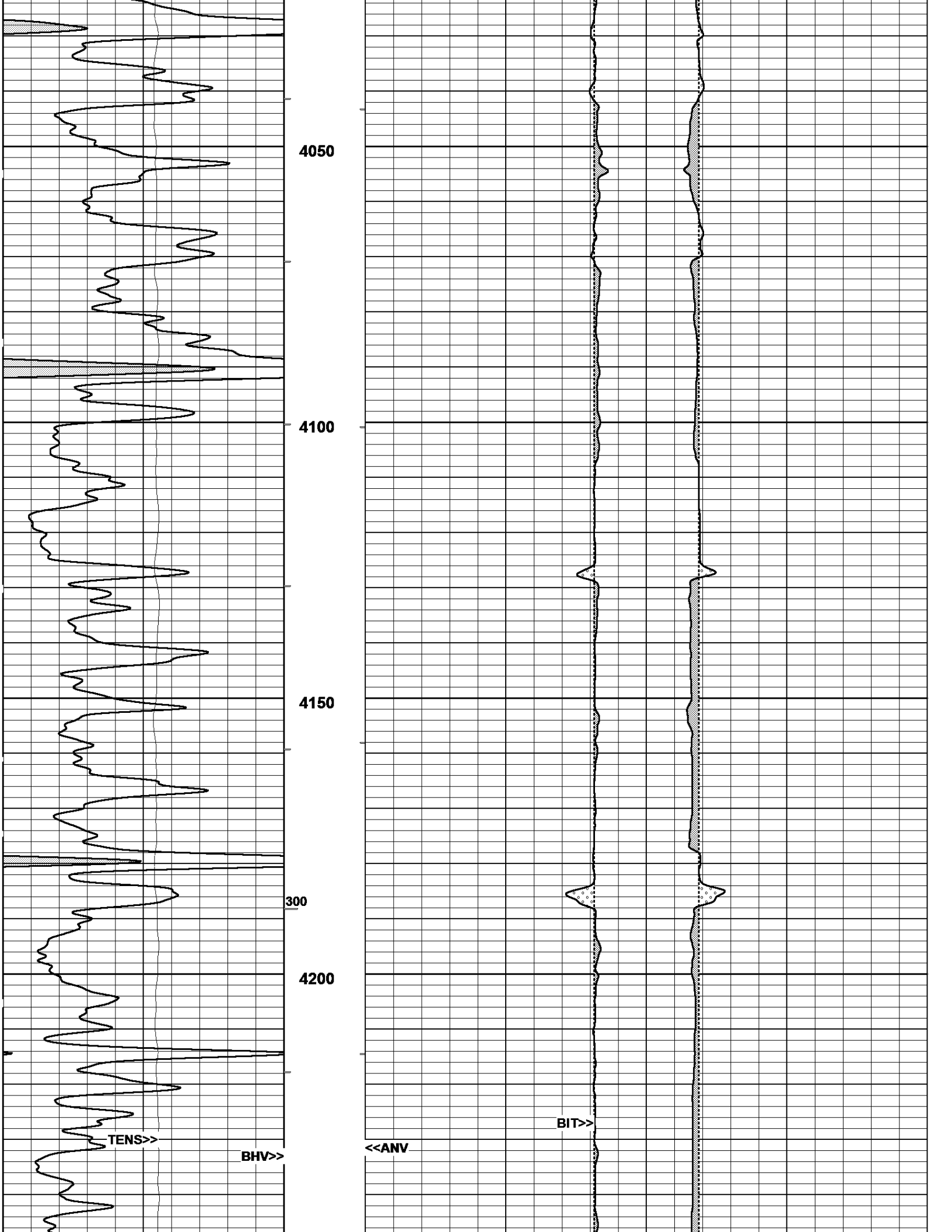


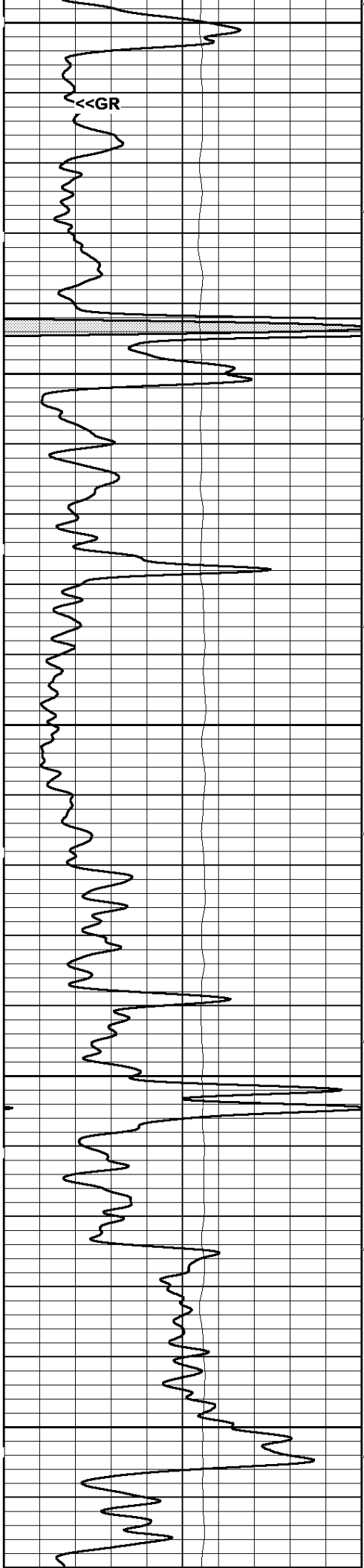




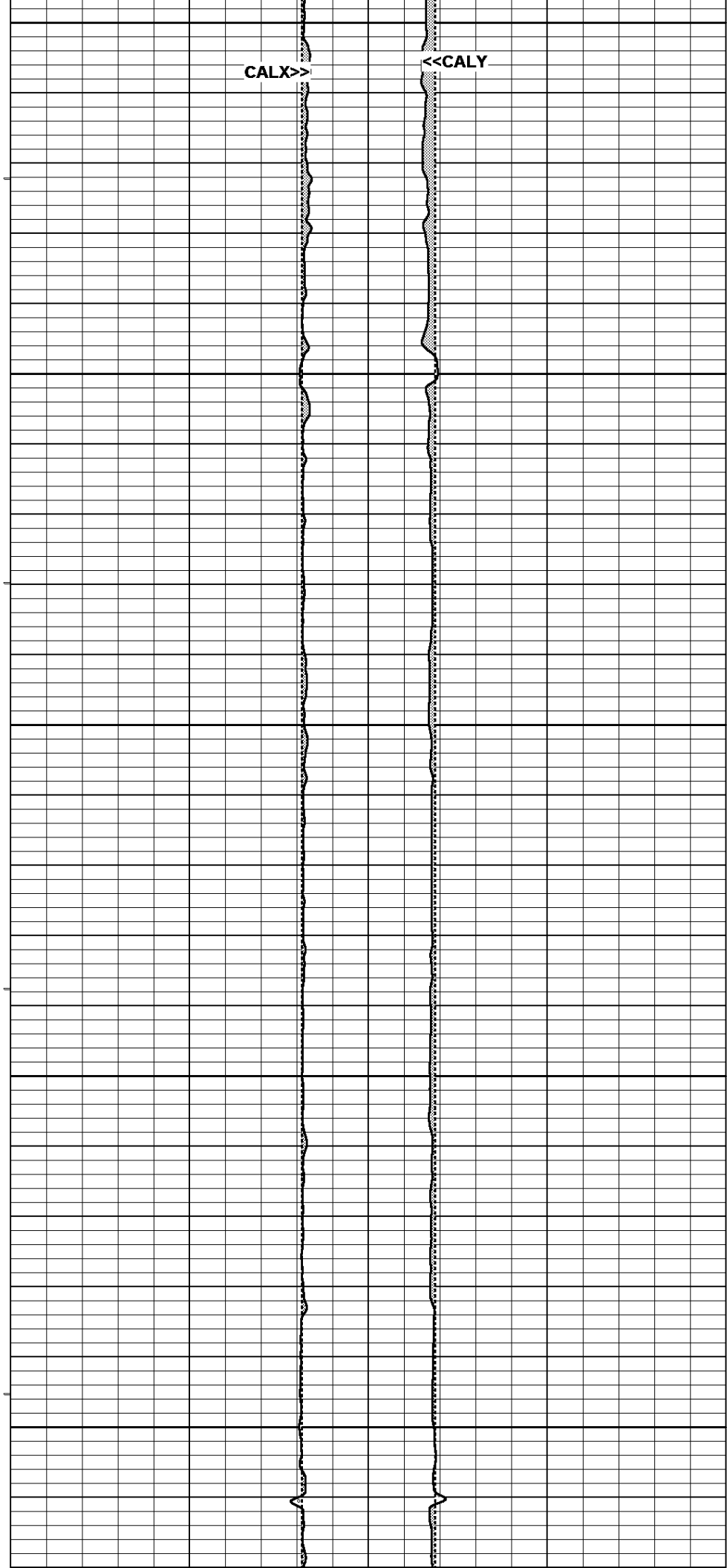






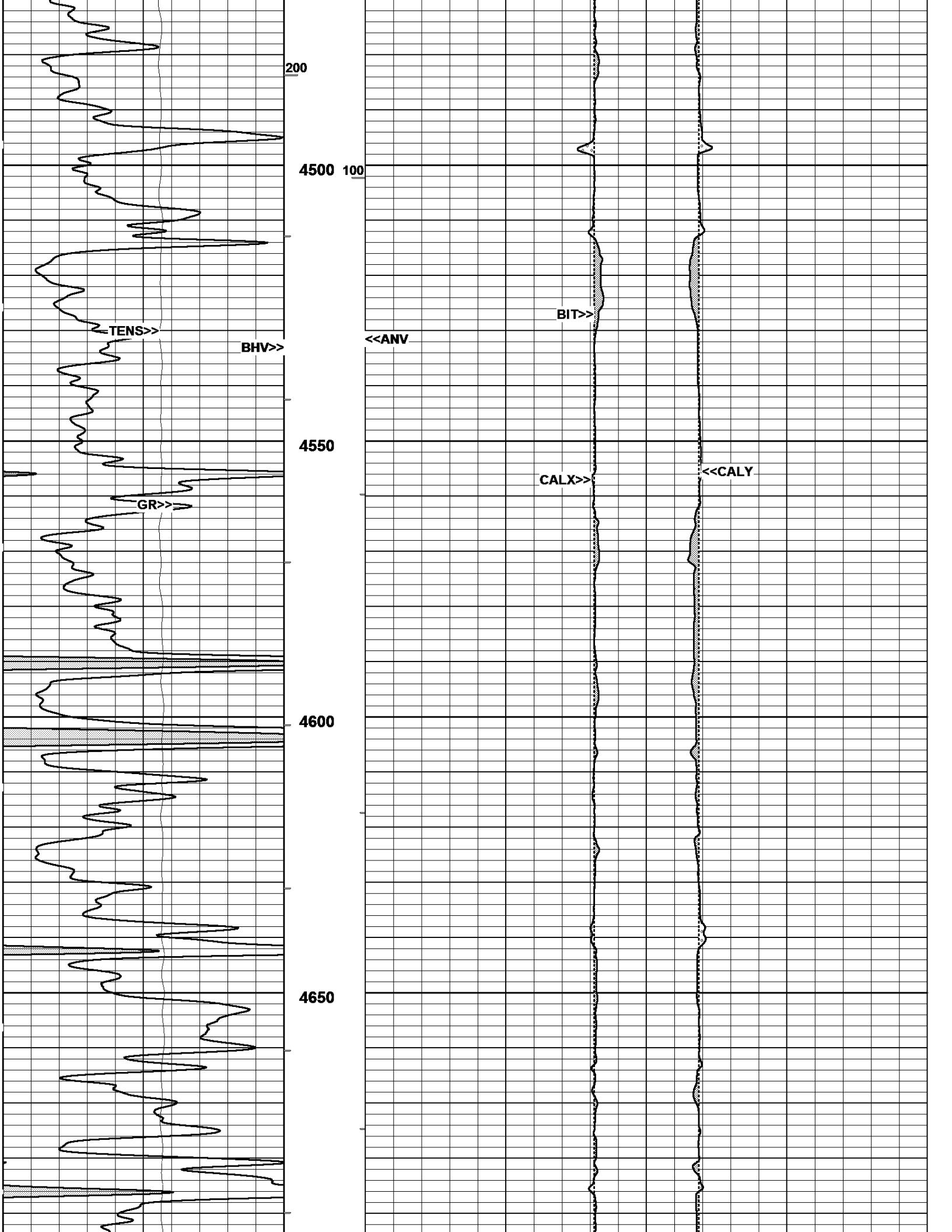


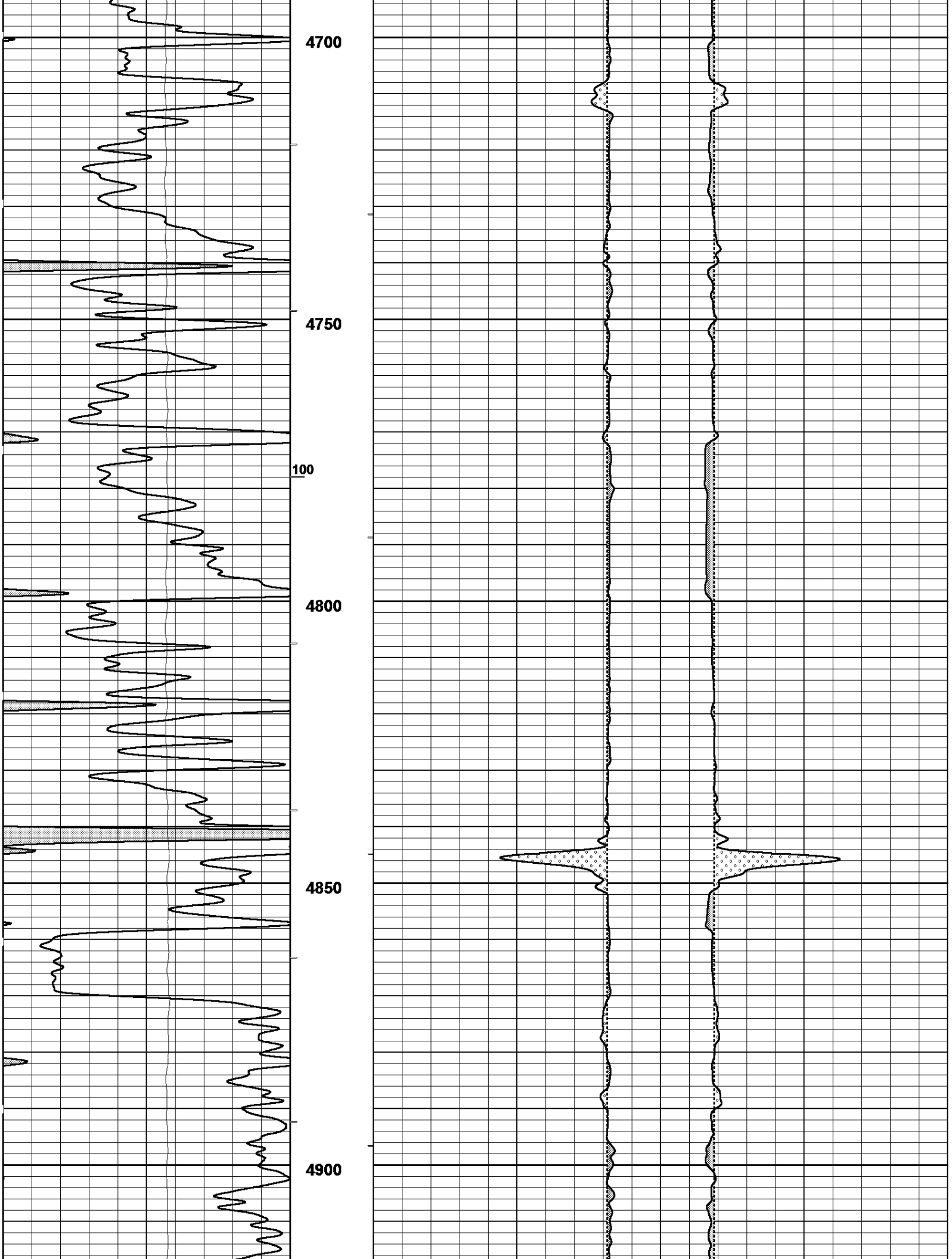
4250  
4300  
4350  
4400  
4450



$\llcorner\text{CALX}</math>$

$\llcorner\text{CALY}</math>$







BASE CALS	42.861 - raw	293.877 - raw	0.633 - gain 0.000 - off	M/D/Y> 10/13/2014	H:M:S> 17:52:45
-----------	--------------	---------------	-----------------------------	-------------------	-----------------

## X CALIPER

SERIAL NUM	RL4101
------------	--------


MASTER CALIBRATIONS					
	ZeroVal: 6.000 In	CalVal: 10.000 In	Gain/Offset	CALIBRATION DATE	CALIBRATION TIME
BASE CALS	2686.080 - raw	4769.491 - raw	0.002 - gain 0.843 - off	M/D/Y> 11/11/2014	H:M:S> 4:52:4

## Y CALIPER CALIBRATIONS

SERIAL NUM	RN2004
------------	--------

MASTER CALIBRATIONS					
	ZeroVal: 6.000 IN	CalVal: 10.000 IN	Gain/Offset	CALIBRATION DATE	CALIBRATION TIME
BASE CALS	1006.372 - raw	1714.147 - raw	0.006 - gain 0.312 - off	M/D/Y> 10/14/2014	H:M:S> 10:36:3

Company	RED OAK ENERGY, INC.
Well	BERNING #1-16
Field	WILDCAT
County	WICHITA
State	KANSAS

	<p><b>BOREHOLE VOLUME X-Y CALIPER</b></p>
--	---